

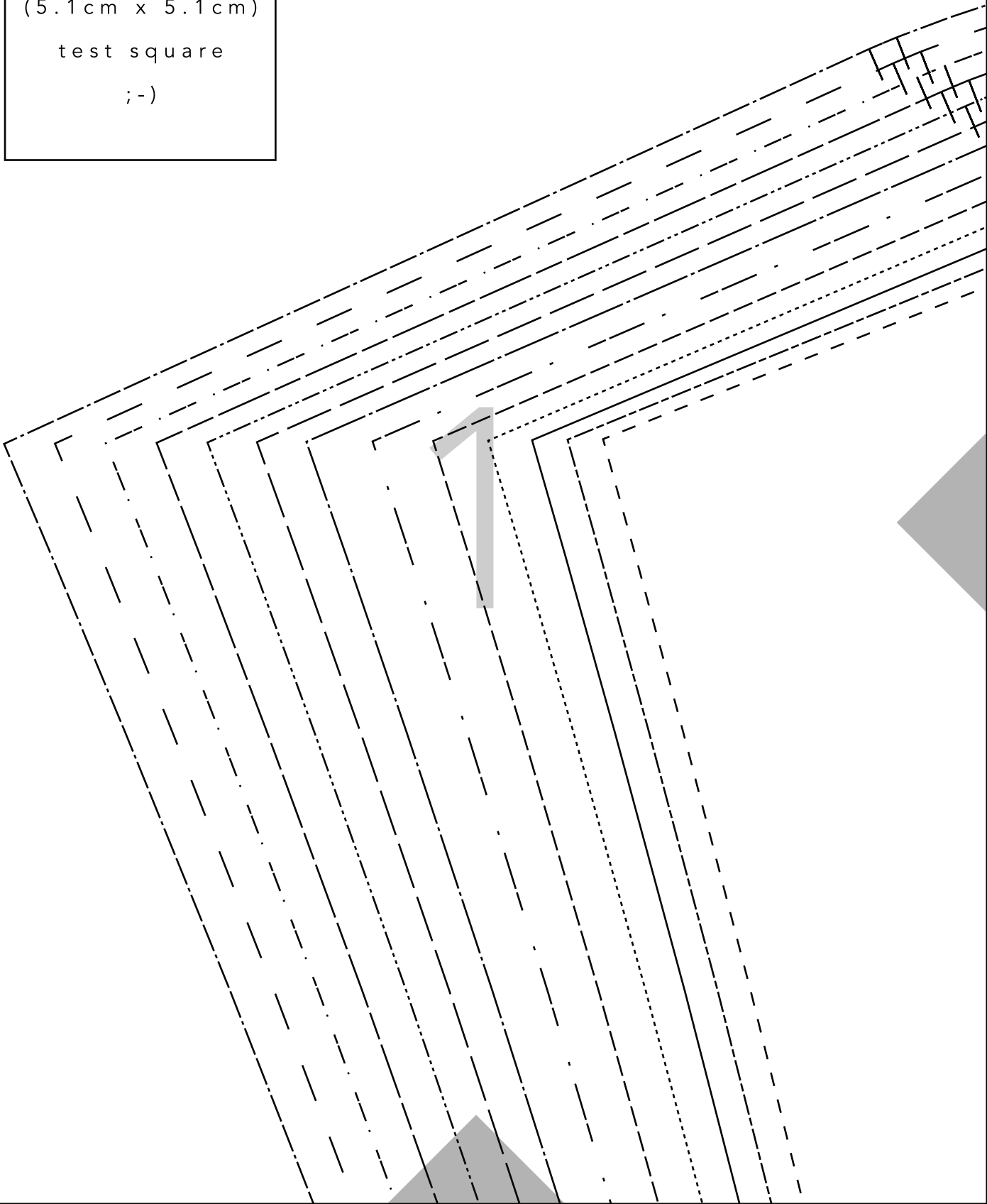
FRIDAY // **the POGONIP PULLOVER**
pattern co.

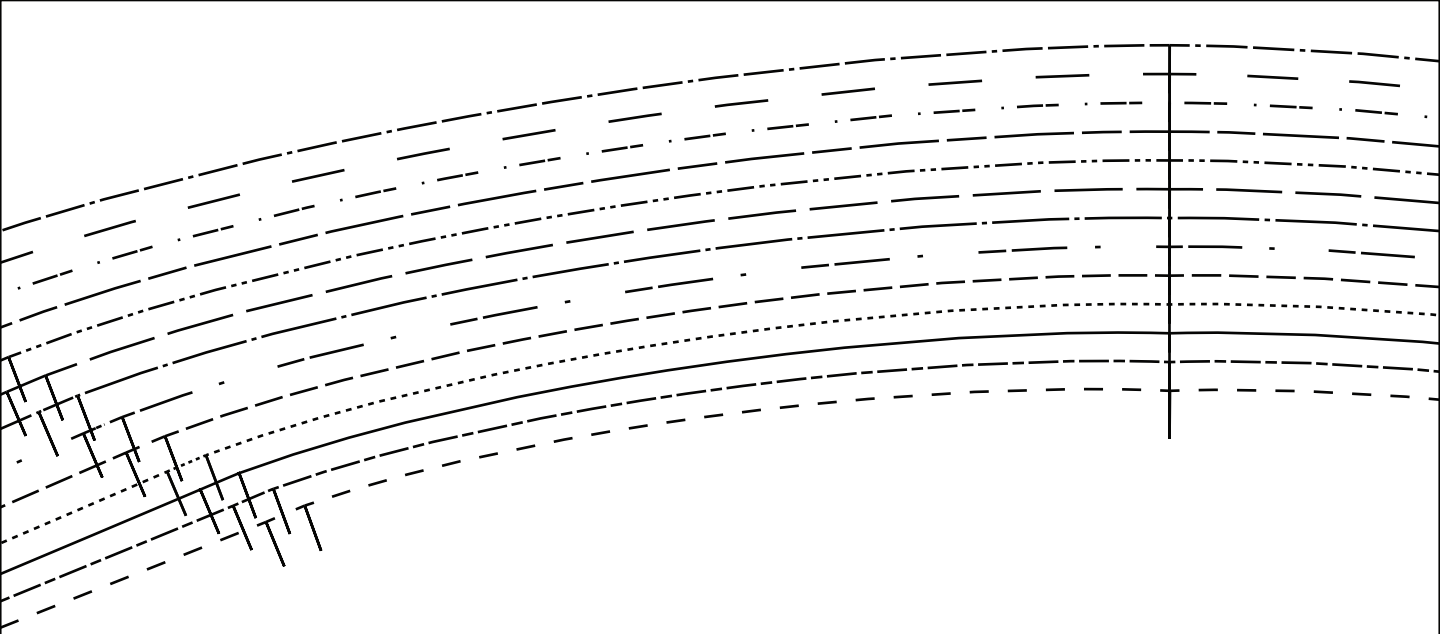
2" x 2"

(5.1cm x 5.1cm)

test square

; -)





SIZE LINE KEY:

XS (0) - - - - -

S (2-4) - - - - -

M (6-8) —————

L (10-12) ······

XL (14-16) - - - - -

XXL (18) - - - - -

1X (20) - - - - -

2X (22) —————

3X (24) - - - - -

4X (26) —————

5X (28) ······

6X (30) —————

7X (32) - - - - -

2

FRIDAY
pattern co.

the POGONIP PULLOVER

E

XS - 7X

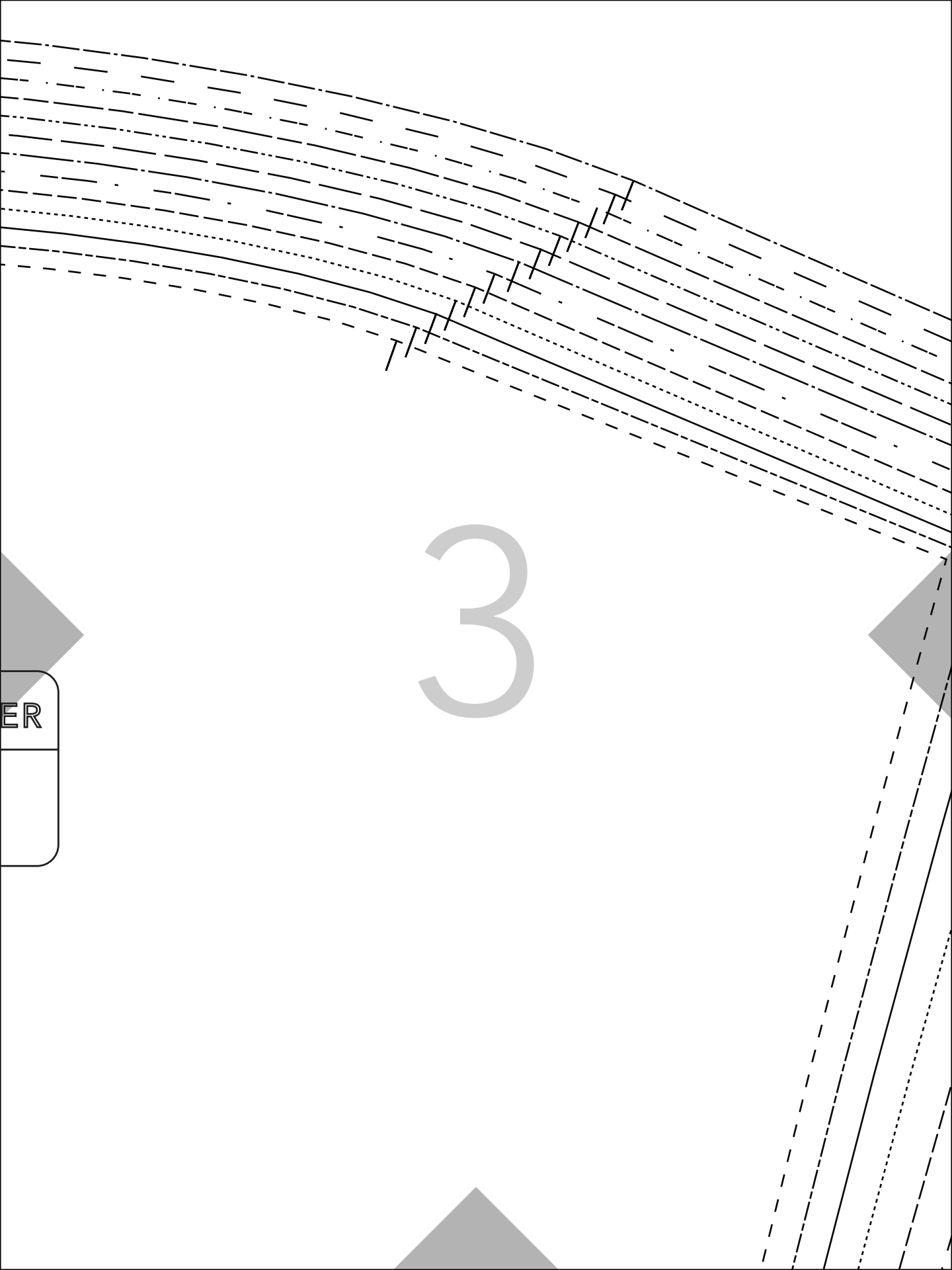
Sleeve (E)

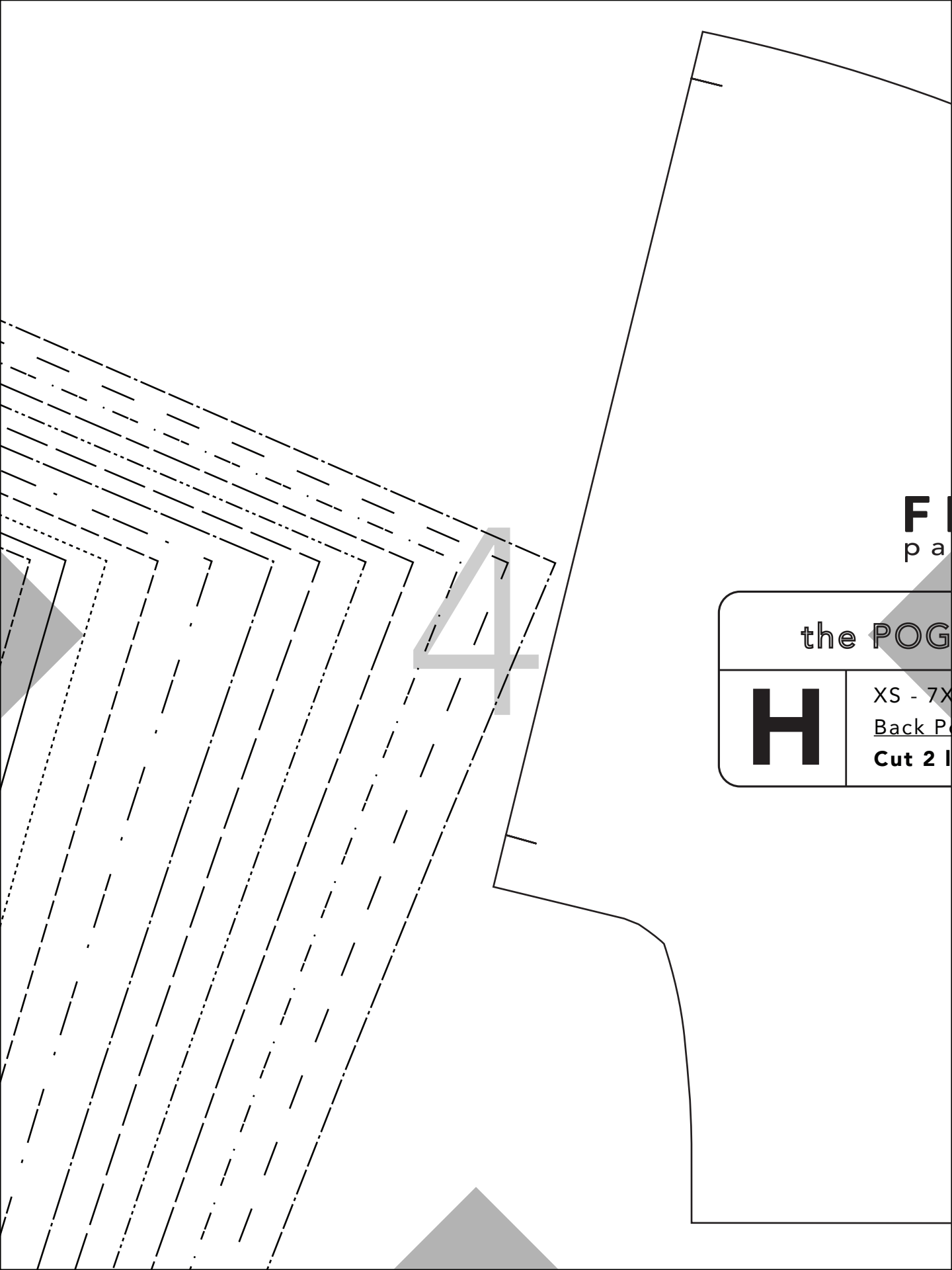
Cut 2 main fabric

↑
grainline of fabric

ER

3





4

F
p a

the POG

H

XS - 7X
Back P
Cut 2 I

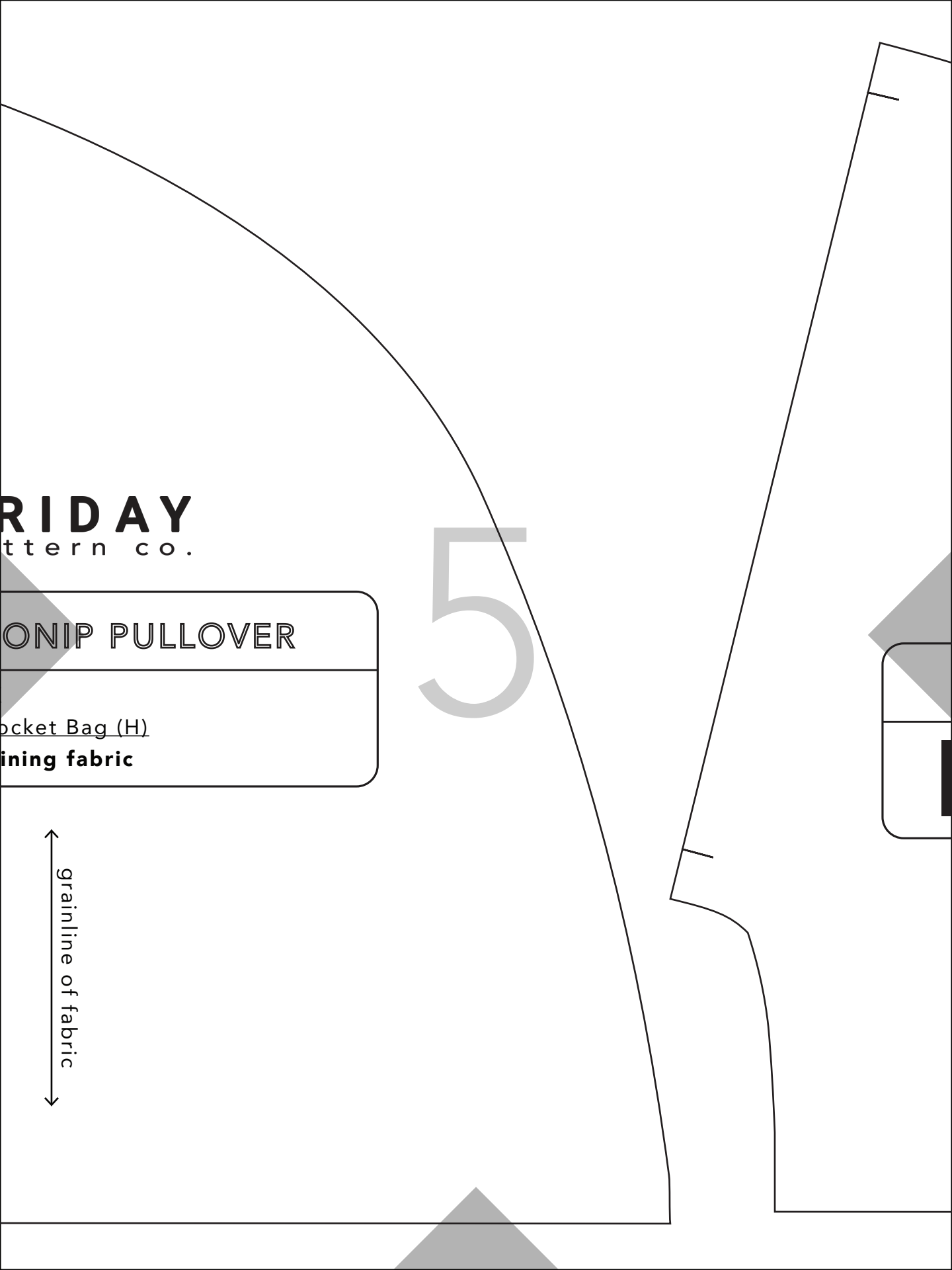
FRIDAY
Pattern co.

MONIP PULLOVER

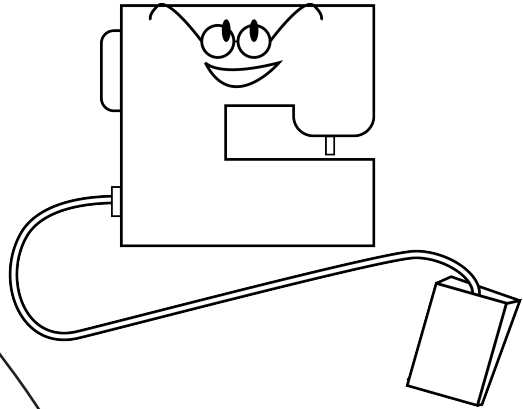
Pocket Bag (H)
lining fabric

5

↑
grainline of fabric
↓



You're so cool and creative!



FRIDAY
pattern co.

6

the POGONIP PULLOVER

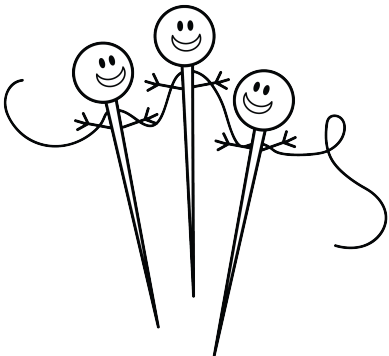
XS - 7X

Front Pocket Bag (l)

Cut 2 lining fabric



7

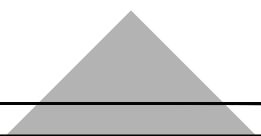
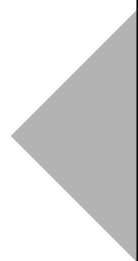


**OMG! We can't wait to see
how your pullover turns out!**

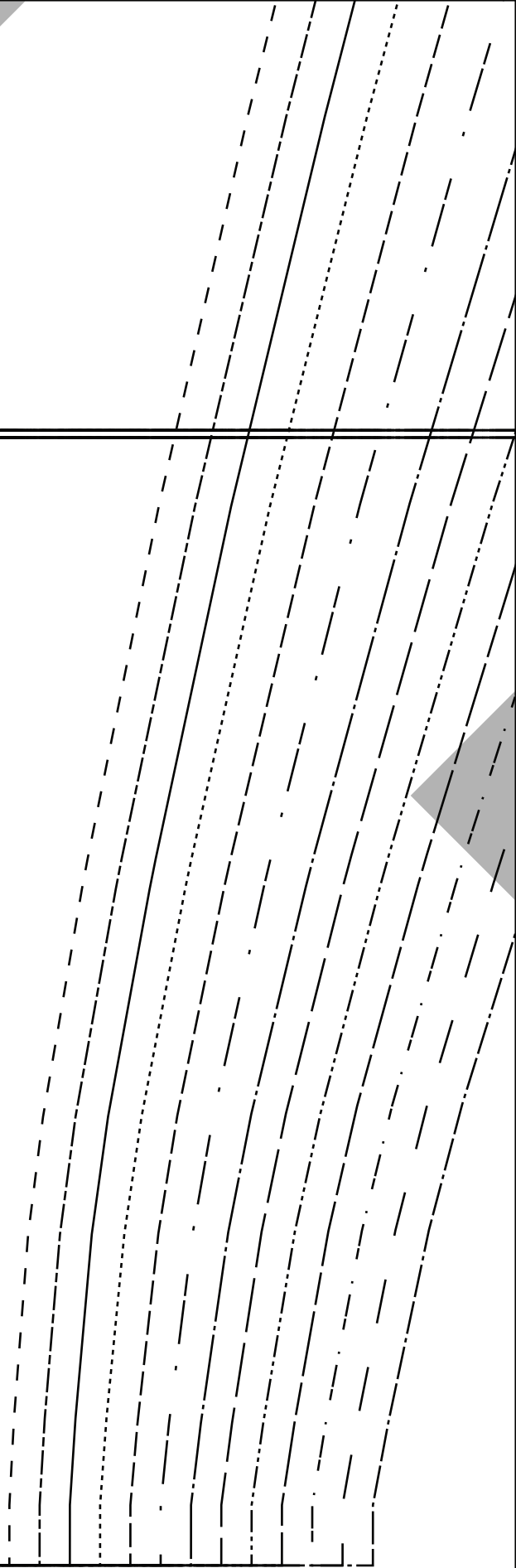


lengthen/shorten here

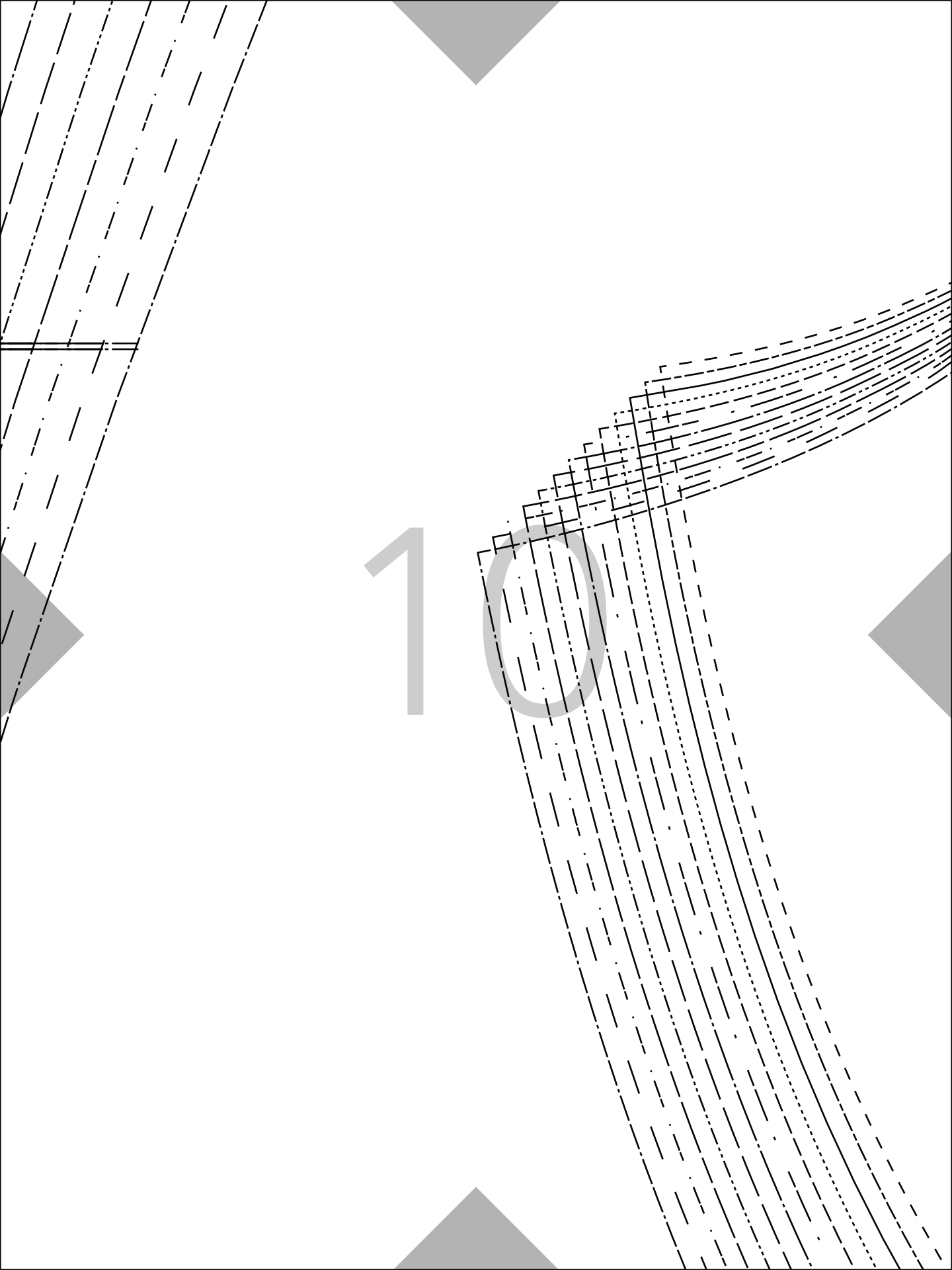
8



9



10



FRIDAY
pattern co.

the POGONIP PULLOVER

XS - 7X

Upper Front (A)

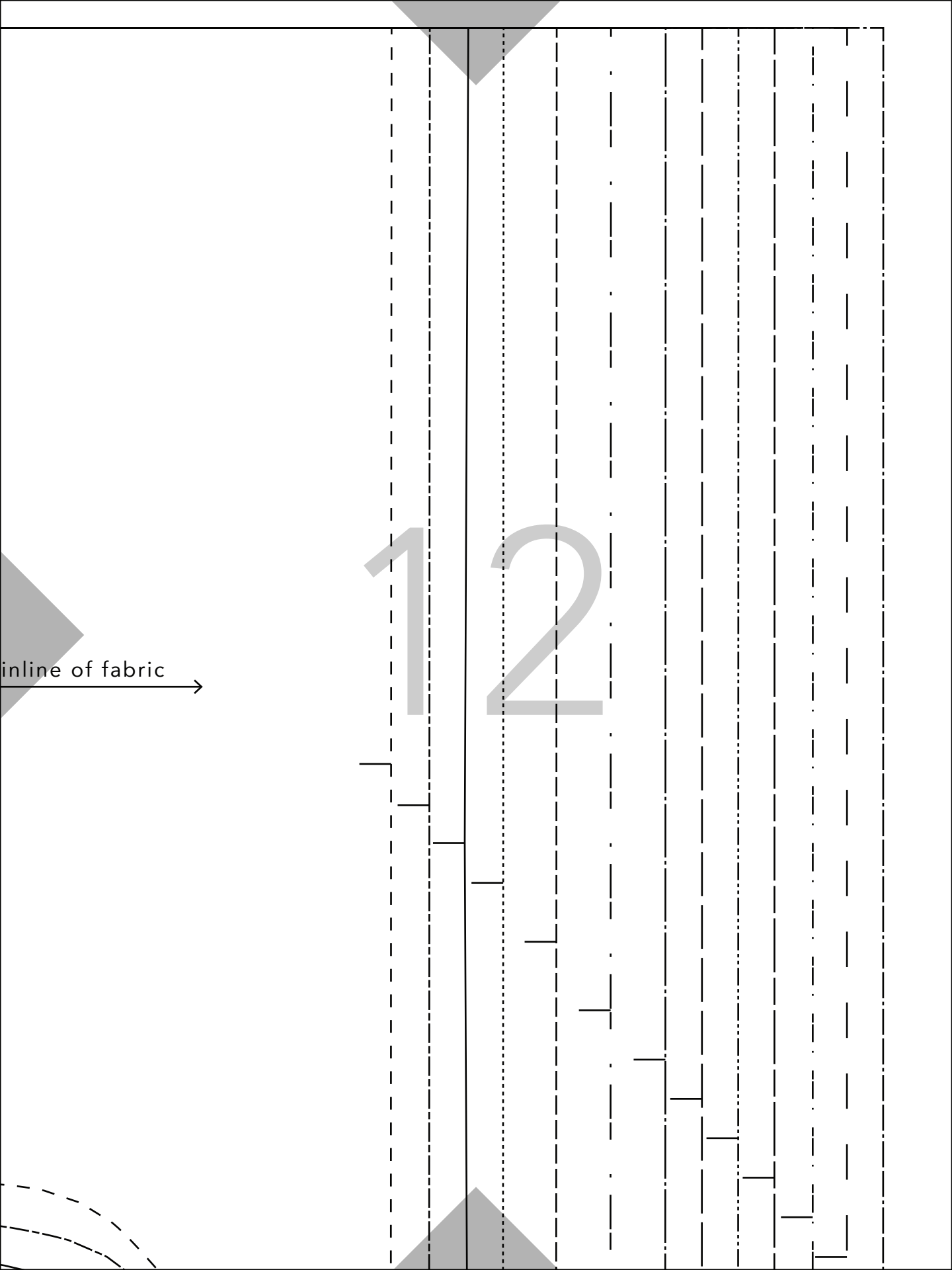
Cut 2 main fabric

A

← gra

in line of fabric →

1 2



FRIDAY

pattern co.

the POGONIP PULLOVER

J

XS - 7X

Sleeve Elastic Casing (J)

Cut 2 main fabric

XS (0)
S (2-4)
M (6-8)
L (10-12)
XL (14-16)
XXL (18)
1X (20)
2X (22)
3X (24)
4X (26)
5X (28)

FRIDAY

pattern co.

the POGONIP PULLOVER

N

XS - 7X

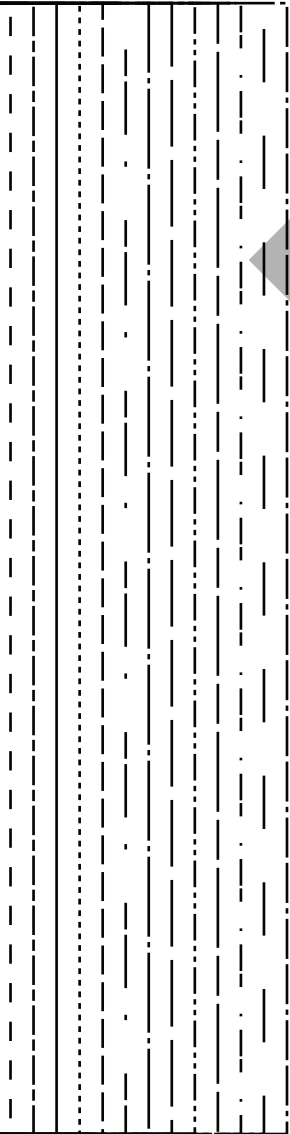
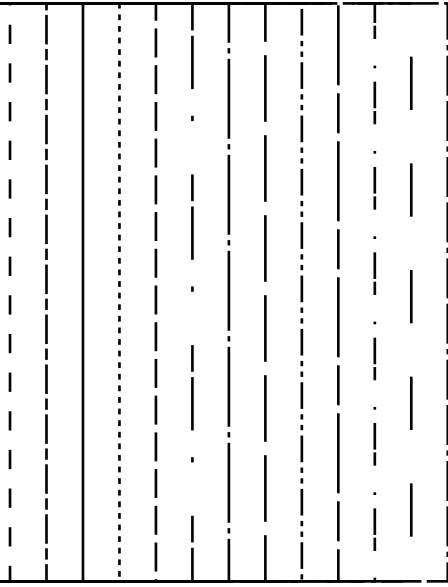
Pocket Flap (N)

Cut 1 lining fabric

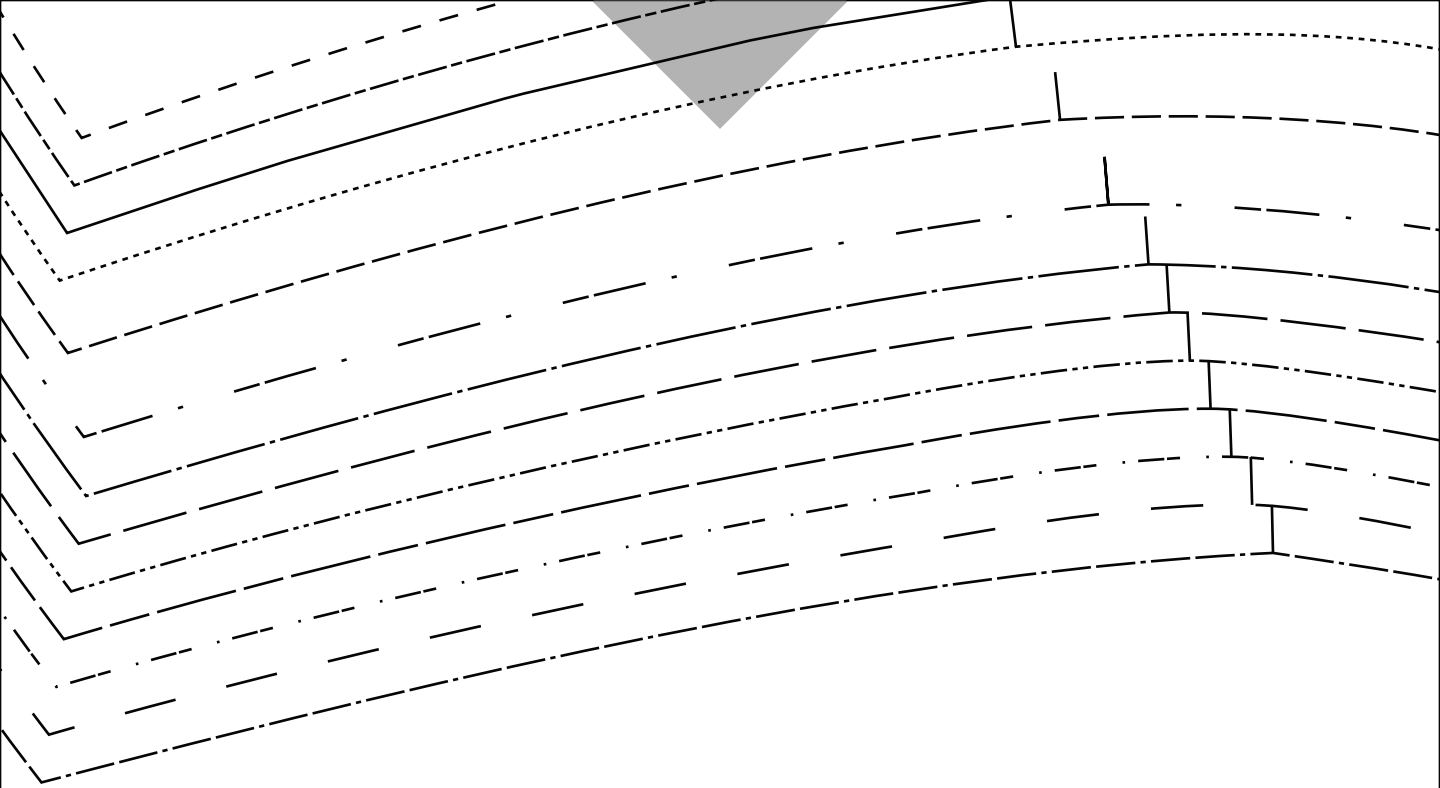
grainline of fabric

↔ grainline of fabric ↔

- XS (0)
- S (2-4)
- M (6-8)
- L (10-12)
- XL (14-16)
- XXL (18)
- 1X (20)
- 2X (22)
- 3X (24)
- 4X (26)
- 5X (28)
- 6X (30)
- 7X (32)



16



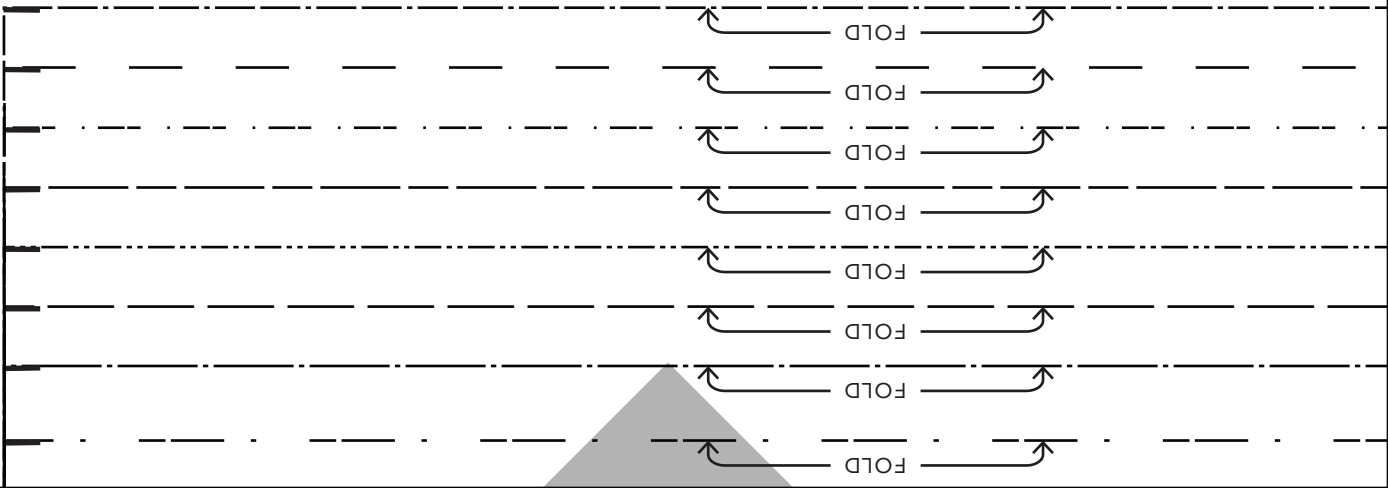
17

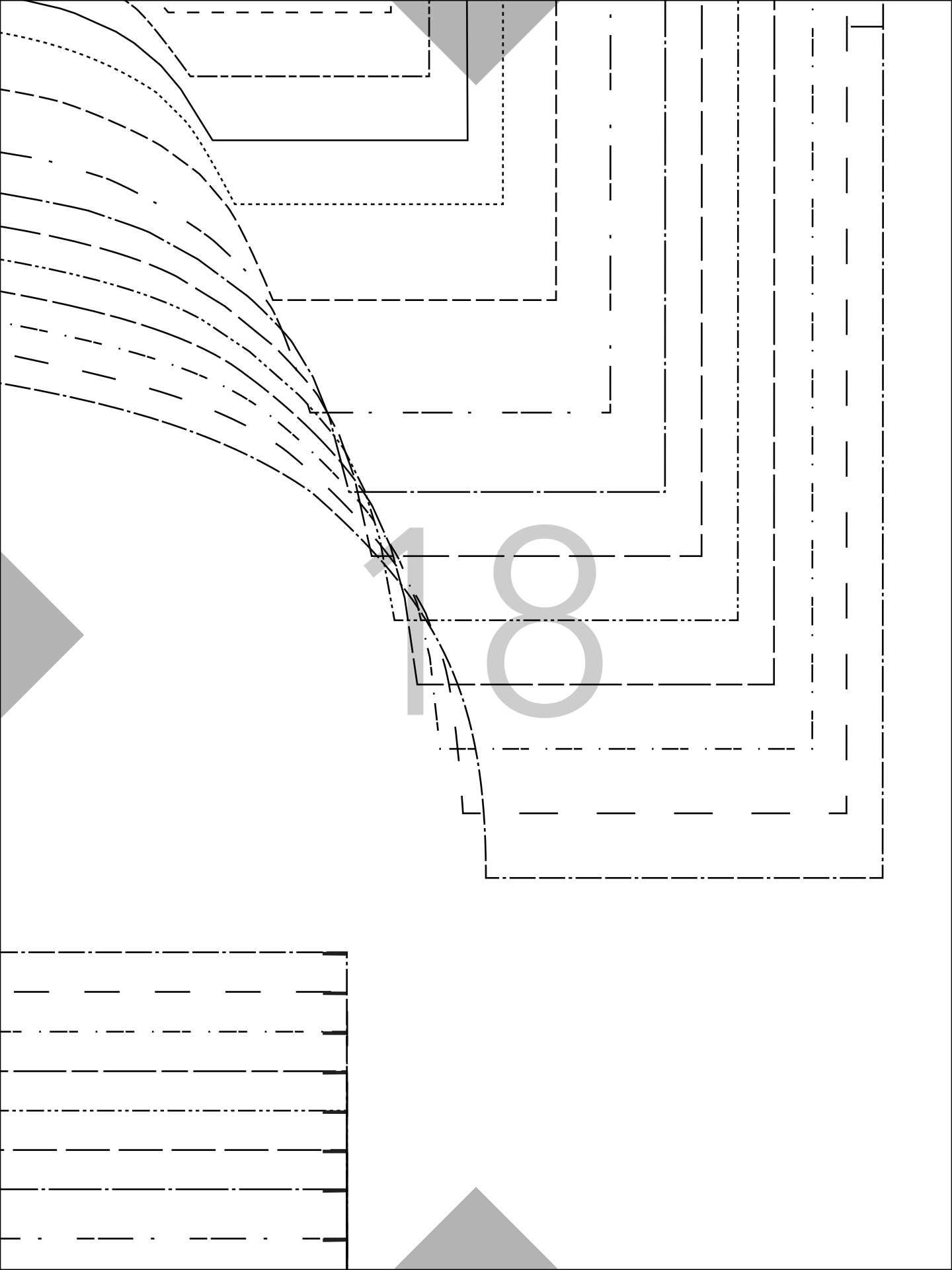
the POGONIP PULLOVER

G	XS - 7X
	Welt (G)

Cut 2 main fabric, cut 2 interfacing

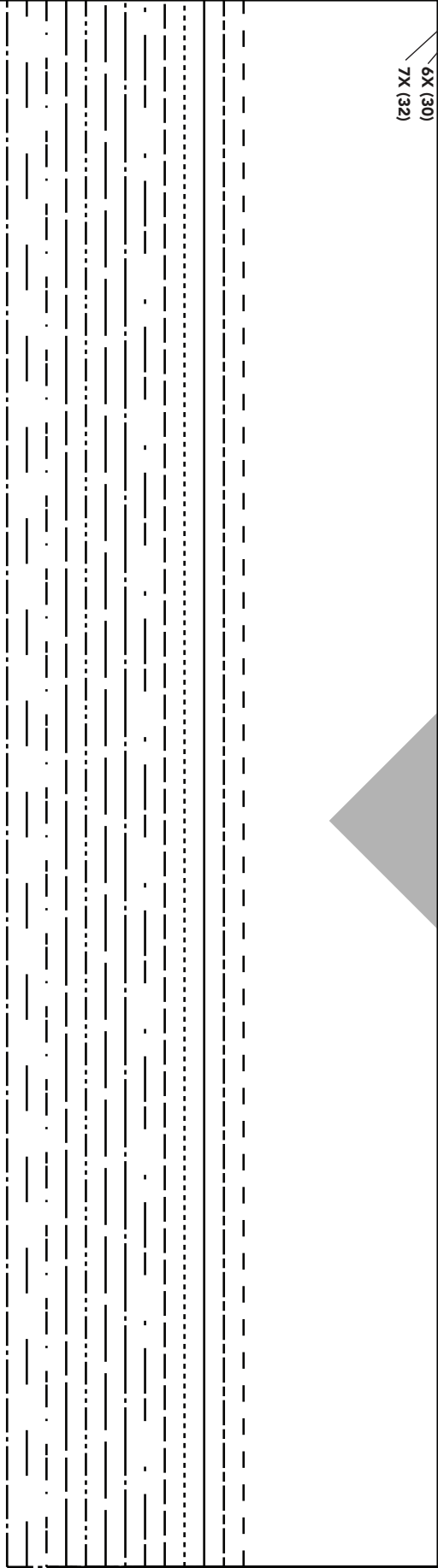
← grainline of fabric →





19

← grainline of fabric →



- XS (0)
- S (2-4)
- M (6-8)
- L (10-12)
- XL (14-16)
- XXL (18)
- 1X (20)
- 2X (22)
- 3X (24)
- 4X (26)
- 5X (28)

FRIDAY
pattern co.

the POGONIP PULLOVER

M

XS - 7X

Packable Pocket (M)

Cut 1 main fabric, cut 1 lining

20

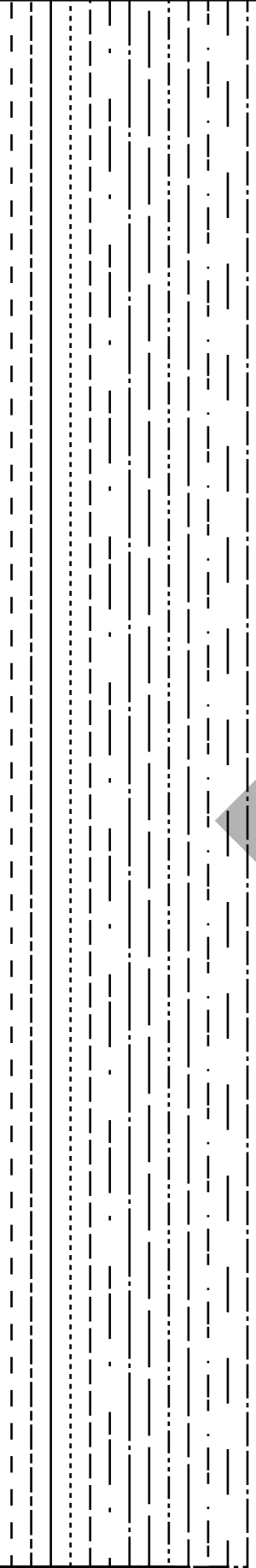
↑
grainline of fabric
↓

ER

g fabric

- XS (0)
- S (2-4)
- M (6-8)
- L (10-12)
- XL (14-16)
- XXL (18)
- 1X (20)
- 2X (22)
- 3X (24)
- 4X (26)
- 5X (28)
- 6X (30)
- 7X (32)

21



FRIDAY
pattern co.

the POGONIP PULLOVER

F

XS - 7X

Collar (F)

Cut 1 main fabric, cut 1 interfacing

← grainline of fabric →

XS (0)
S (2-4)
M (6-8)
L (10-12)
XL (14-16)
XXL (18)
1X (20)
2X (22)
3X (24)
4X (26)
5X (28)
6X (30)
7X (32)

XS (0)
S (2-4)
M (6-8)
L (10-12)
XL (14-16)
XXL (18)
1X (20)
2X (22)
3X (24)
4X (26)
5X (28)
6X (30)
7X (32)

notch at center front

FRIDAY
pattern co.

the **POGONIP PULLOVER**

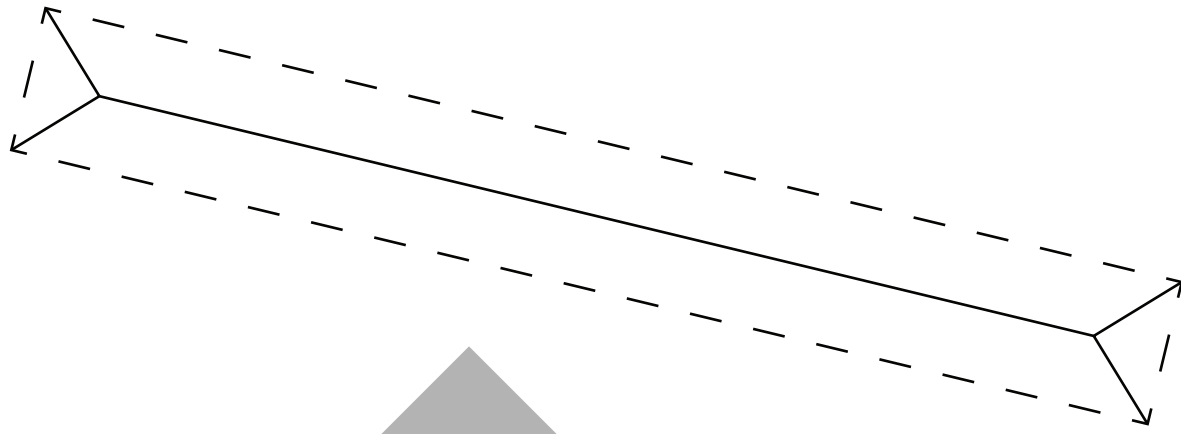
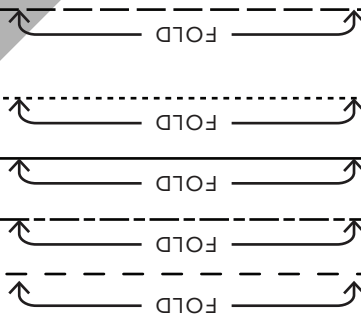
XS - 7X

Lower Front (B)

**Cut 1 main fabric on fold,
cut 1 lining fabric on fold**

B

← grainline of



fabric →

notch at center front

24

FRIDAY
pattern co.

the **POGONIP PULLOVER**

K

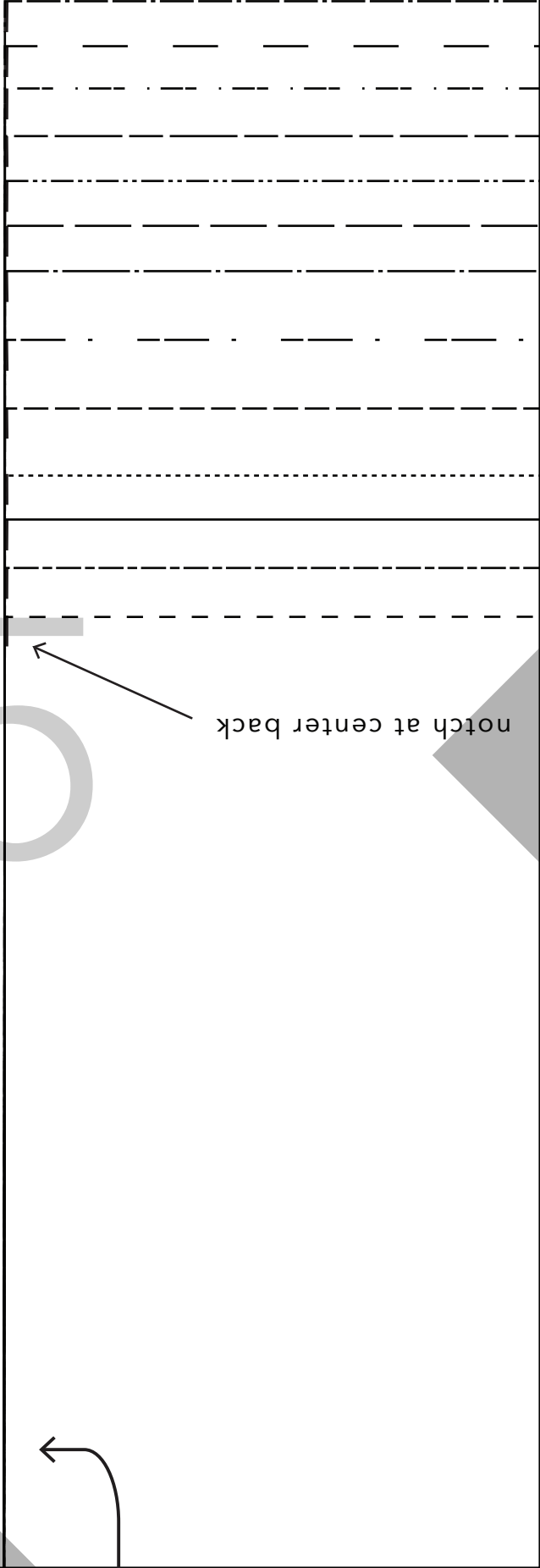
XS - 7X

Hem Elastic Casing (K)

Cut 2 main fabric



notch at center back



26

- S (2-4)
- M (6-8)
- L (10-12)
- XL (14-16)
- XXL (18)
- 1X (20)
- 2X (22)
- 3X (24)
- 4X (26)
- 5X (28)
- 6X (30)
- 7X (32)

27

29

FRIDAY
pattern co.

← grainline of fabric →

the POGONIP PULLOVER

L

XS - 7X

Strap (L)

Cut 1 lining fabric

Handwriting practice area with multiple rows of lines. Each row consists of a solid top line, a dashed midline, and a solid bottom line. A gray triangle is located at the top center, and another gray triangle is on the left side pointing right.

30

OVER

--

grainline of fabric

C

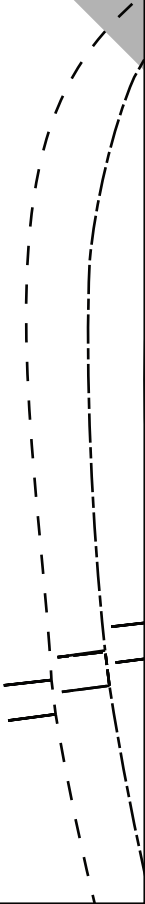
XS - 7X
Back (C)

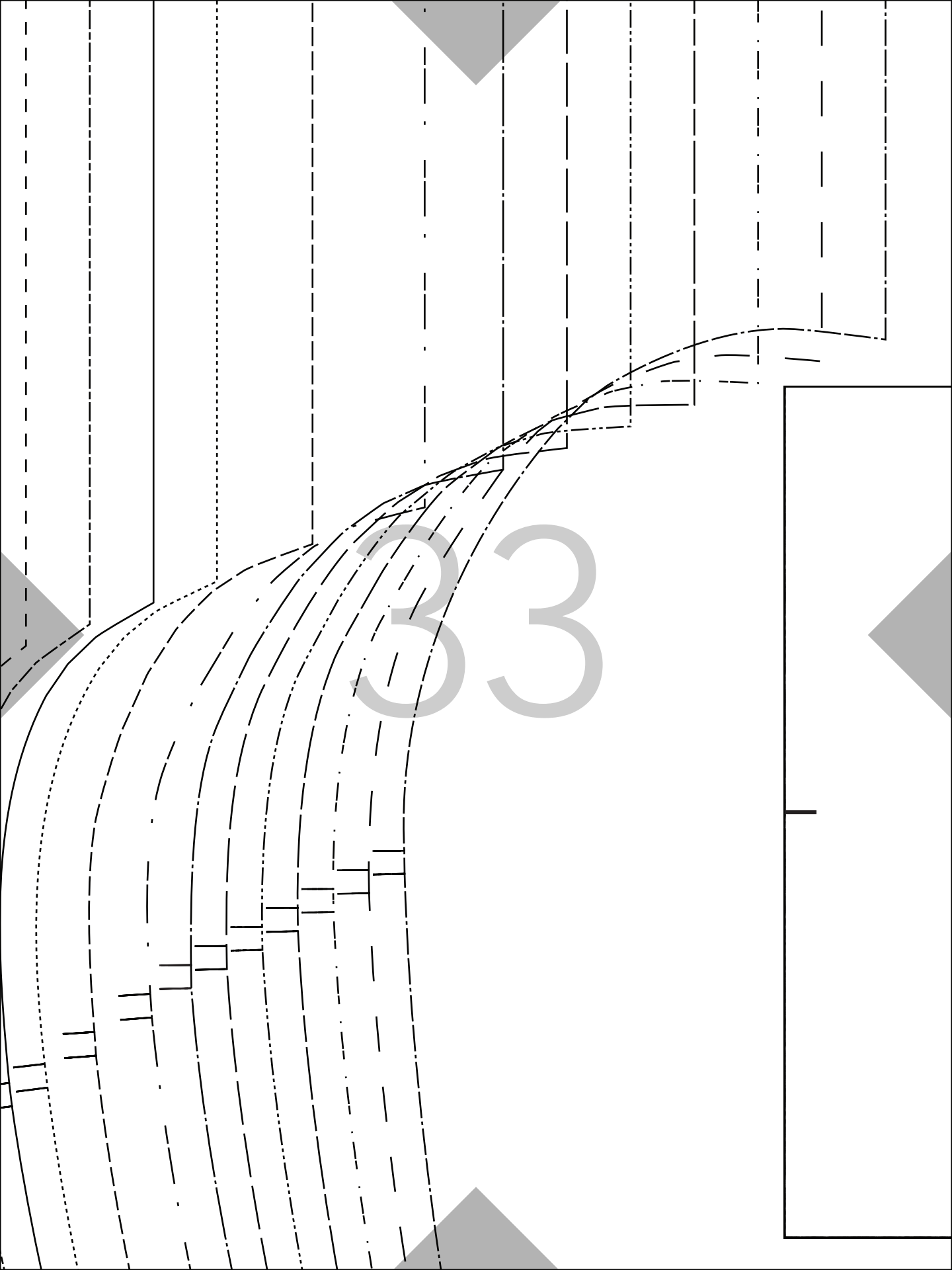
Cut 1 main fabric on fold

the POGONIP PULLO

FRIDAY
pattern co.

- XS (0)
- S (2-4)
- M (6-8)
- L (10-12)
- XL (14-16)
- XXL (18)
- 1X (20)
- 2X (22)
- 3X (24)
- 4X (26)
- 5X (28)
- 6X (30)
- 7X (32)





ALL SIZES

FRIDAY
pattern co.

the **POGONIP PULLOVER**

D

XS - 7X

Front Placket (D)

**Cut 2 main fabric,
cut 2 interfacing**

- XS (0)
- S (2-4)
- M (6-8)
- L (10-12)
- XL (14-16)
- XXL (18)
- 1X (20)
- 2X (22)
- 3X (24)
- 4X (26)
- 5X (28)
- 6X (30)
- 7X (32)

← grainline

Direction of fabric →

XS (0)



S (2-4)



M (6-8)



L (10-12)



XL (14-16)



XXL (18)



1X (20)



2X (22)



3X (24)



4X (26)



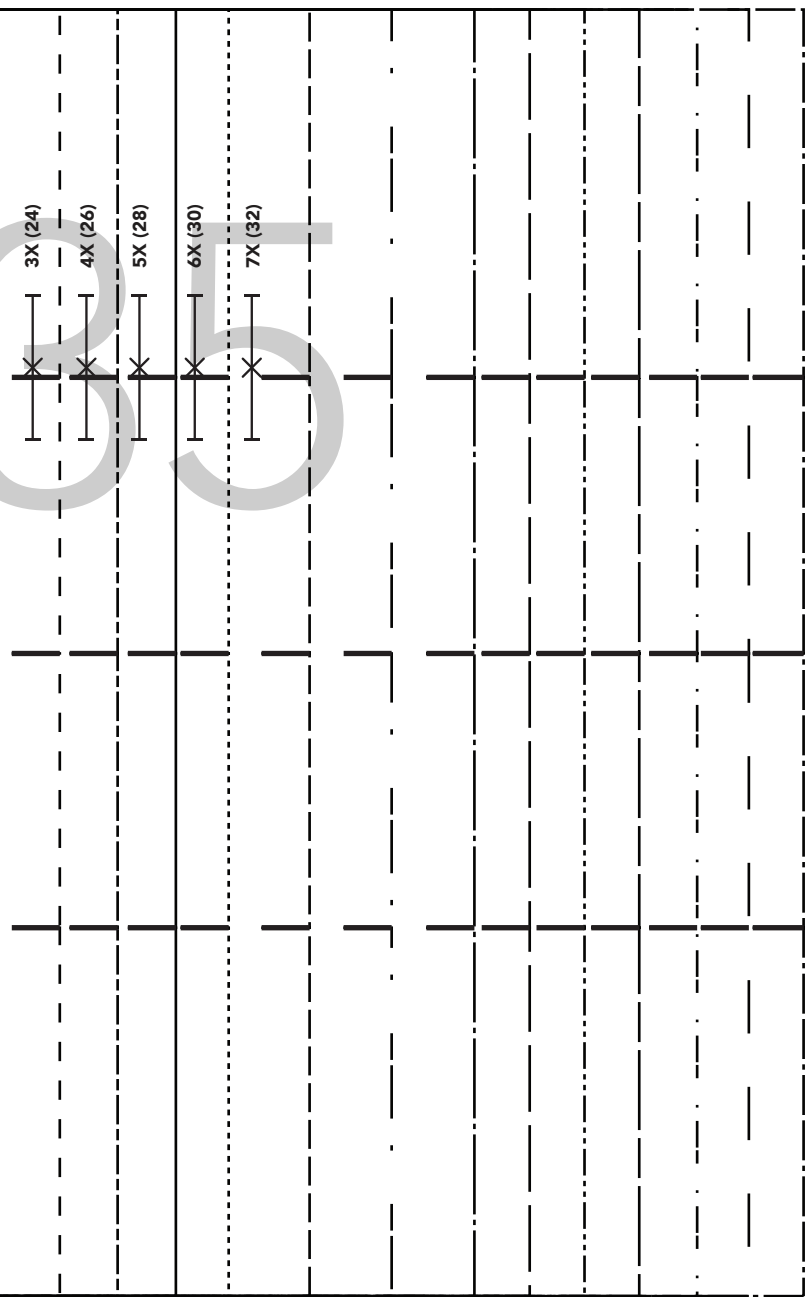
5X (28)



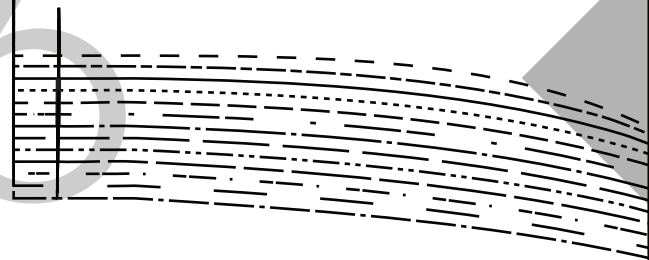
6X (30)



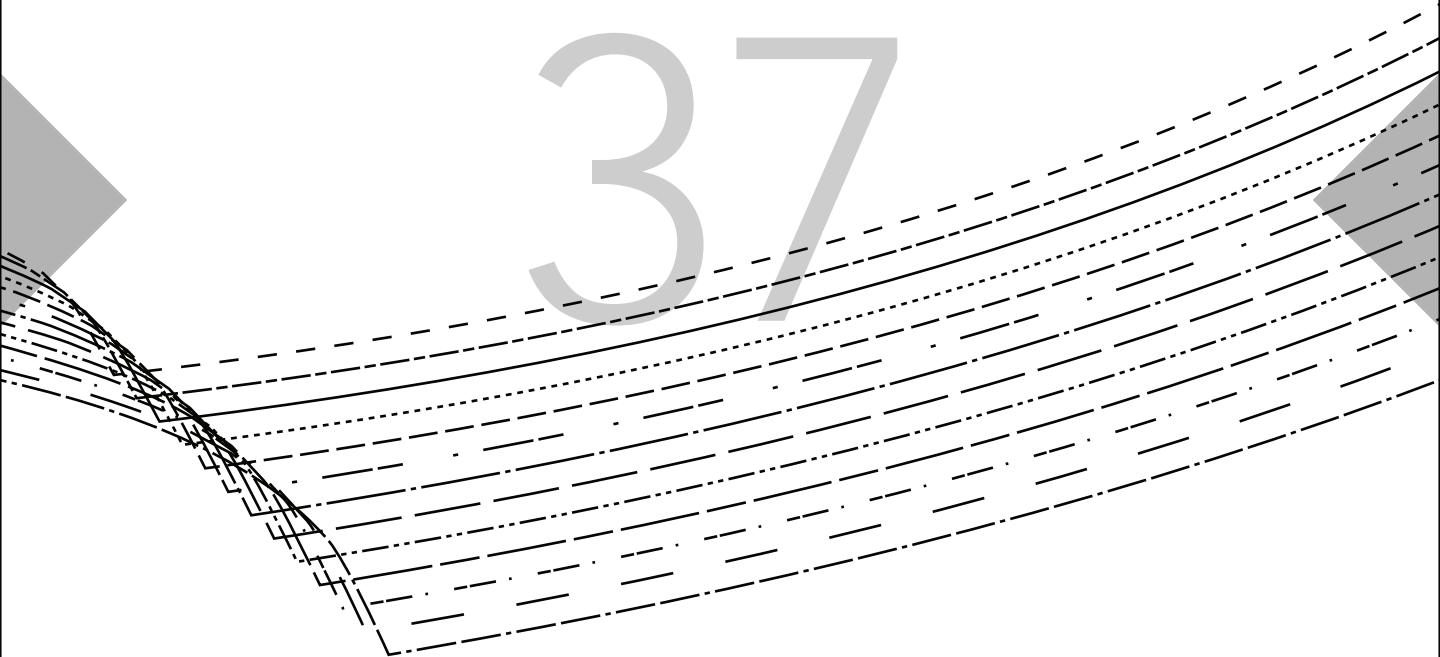
7X (32)

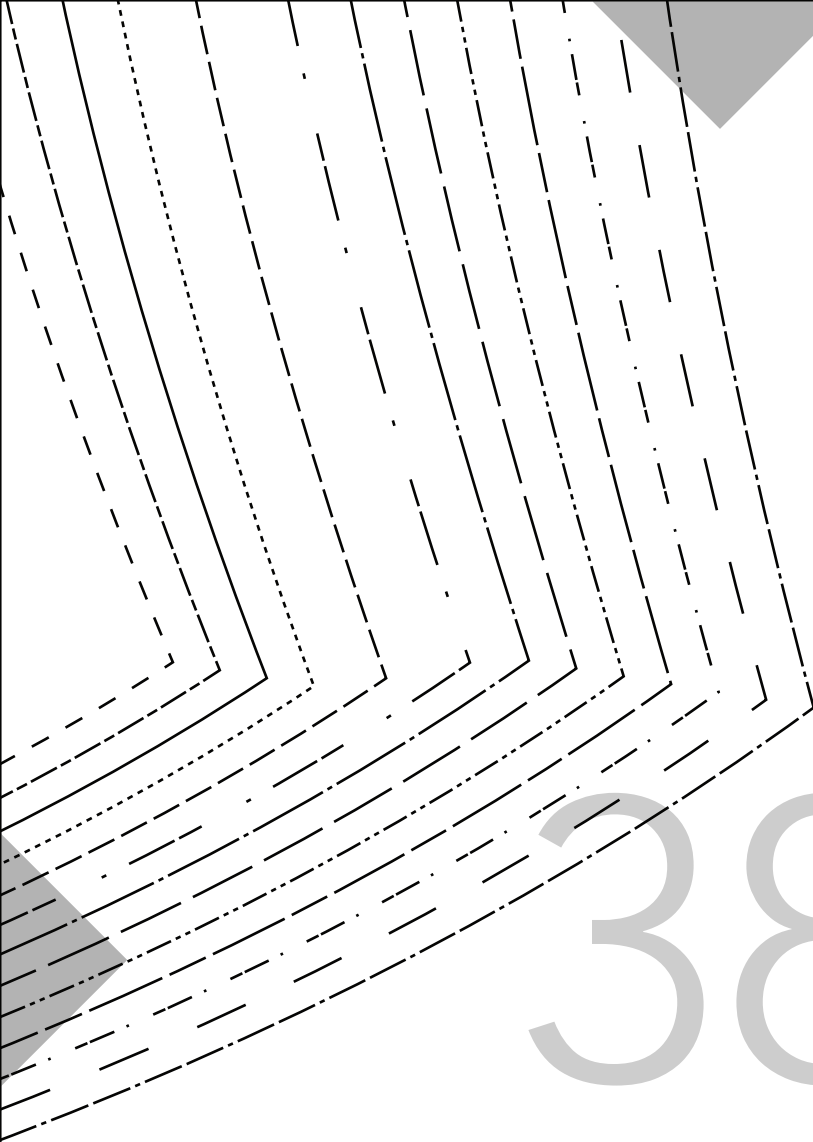


36



37





38