

**FRIDAY**  
pattern co.

the **POGONIP PULLOVER**



# THANK YOU FOR SEWING A FRIDAY PATTERN :)

At Friday Pattern Company we really love sewing and we want you to love it too! Our patterns are designed with the sewing process in mind. It is our goal to make them as fun and easy to sew as possible. We hope you find joy in sewing and that after you're done you have a garment that you treasure. Below are some resources for extra support and inspiration in your sewing journey!

Check out our YouTube Channel for video sew alongs to accompany our patterns:

[YouTube.com/FridayPatternCompany](https://www.youtube.com/FridayPatternCompany)

Follow us on Instagram for fun + sewing inspiration:

[Instagram.com/FridayPatternCompany](https://www.instagram.com/FridayPatternCompany)

[Join our email newsletter to stay up to date on all the latest Friday News](#)

If you have any questions, email us:

[hello@fridaypatterncompany.com](mailto:hello@fridaypatterncompany.com)



*Have fun sewing!  
I believe in you!*

This pattern is for personal and non-profit use only. If you are interested in licensing it for commercial use, please email:

**[hello@fridaypatterncompany.com](mailto:hello@fridaypatterncompany.com)**

# THE POGONIP PULLOVER

The Pogonip Pullover is the perfect layer for all your outdoor adventures! It is an unlined pullover jacket that features welt pockets, a sport collar, and a snap or button half front placket. It is designed for woven or stable knit fabrics so you can have a lot of fun with your fabric choice. It looks great in everything from quilted fabrics, to fleece, to linen! Packing and carrying the Pogonip is a breeze with the fun (and optional), packable pocket (with strap).





# ARE YOU GOING TO READ THESE INSTRUCTIONS OFF YOUR PHONE?

Check out our mobile friendly instructions by [clicking this link](https://bit.ly/pogonip-mobile-instructions) or going to: [bit.ly/pogonip-mobile-instructions](https://bit.ly/pogonip-mobile-instructions)

## NOTIONS

- 2.5 yards [2.3 meters] - 1" [2.5cm] wide elastic
- 3 - 5/8" [1.6cm] snaps or buttons
- 1 - 5/8" [1.6cm] button for packable pocket (optional)
- 2" [5cm] of 1/4" [.6cm] scrap of elastic for packable pocket button loop (optional)
- Matching thread

## RECOMMENDED FABRIC

You have a lot of options when it comes to fabric choice for the Pogonip Pullover! It can be made from a woven or stable knit fabric. Depending on the pullover you are looking for, fabrics like french terry, velour, corduroy, linen, denim, or pre-quilted fabrics would look great (to name a few!).

## FABRIC THINGS TO KEEP IN MIND

- If you are using really thick or lofty fabric it may be harder to fold it into the packable pocket. Consider enlarging the pocket or omitting it.
- For the lining/strap of your packable pocket use a lighter weight fabric to avoid your pocket being too bulky.
- If your fabric is stiff you can omit the fusible interfacing on Collar (F).

---

**SEAM ALLOWANCE IS INCLUDED IN THE PATTERN  
AND IS 3/8" [1CM] UNLESS OTHERWISE STATED.**

---

# PRINTING YOUR PDF PATTERN

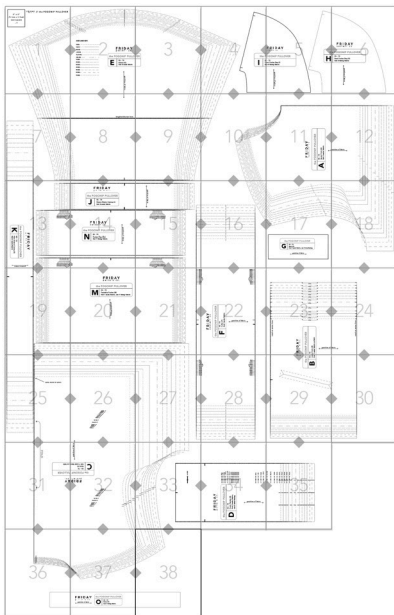
For a full tutorial on printing and assembling PDF patterns visit:

[fridaypatterncompany.com/pages/printing-and-assembling-pdf-patterns](http://fridaypatterncompany.com/pages/printing-and-assembling-pdf-patterns)

Your PDF pattern can be printed on letter sized (8.5"x11" in) or A4 paper. When you print, make sure you select "Actual Size" or scale to 100%. Do not select "scale to fit".

You may want to print page 1 first and double check the 2"x 2"[5cm] test square before printing the rest of your pattern. If your pattern isn't printing centered on the page, change the orientation to "Auto portrait/landscape". Once printed, piece your pattern together by putting the pages in numerical order and matching up the gray diamonds on the pages.

[Pogonip Pullover Print at Home File.pdf](#)



## PRINTING LAYERS

Your PDF pattern file is layered so you can print out just the sizes that you want. To view the layers you need to download Adobe Acrobat Reader (it is free).

To print the pattern and select layers:

- Download the pattern and open it in Adobe Acrobat Reader.
- Click the icon that looks like 3 squares falling from the sky to view layers.
- Uncheck the sizes that you don't want to print. Be sure to leave the "All Sizes" layer visible.



# PIECES

## TO CUT:

### MAIN FABRIC

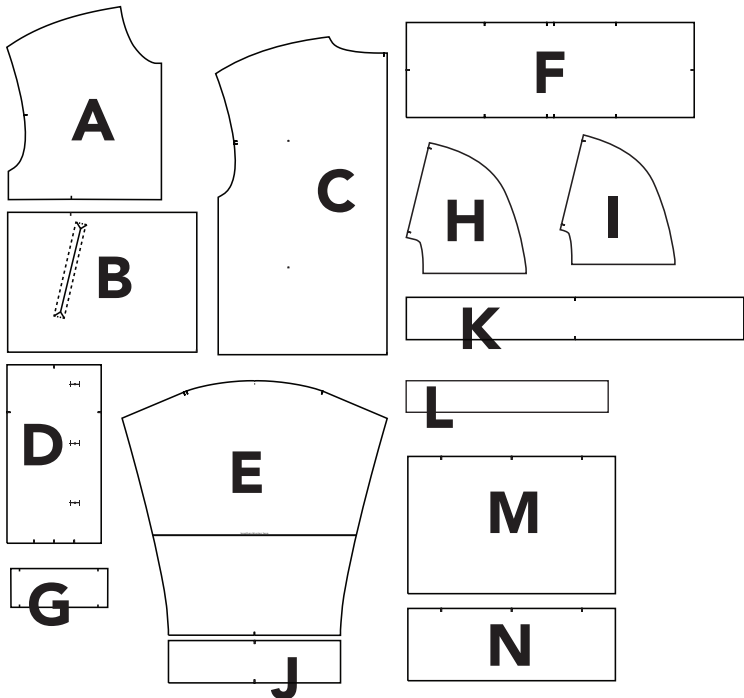
- Upper Front (A) - Cut 2
- Lower Front (B) - Cut 1 on fold
- Back (C) - Cut 1 on fold
- Front Placket (D) - Cut 2
- Sleeve (E) - Cut 2
- Collar (F) - Cut 1
- Welt (G) - Cut 2
- Sleeve Elastic Casing (J) - Cut 2
- Hem Elastic Casing (K) - Cut 2
- Packable Pocket (M) - Cut 1

### LINING FABRIC

- Lower Front (B) - Cut 1 on fold
- Front Pocket Bag (I) - Cut 2
- Back Pocket Bag (H) - Cut 2
- Packable Pocket (M) - Cut 1
- Pocket Flap (N) - Cut 1
- Strap (L) - Cut 1

### FUSIBLE INTERFACING

- Front Placket (D) - Cut 2
- Collar (F) - Cut 1
- Welt (G) - Cut 2



# PHOTOSHOOT SAMPLES



This photoshoot sample is a size medium. The model is 5'7" tall.

This version is made from a pre-quilted fabric. If you are wanting a quilted version but can't get your hands on a pre-quilted fabric we have a blog post with instructions on making your own.

You can find it by searching for Pogonip on our blog or [clicking the link here](#).



This photoshoot sample is a size XXL. The model is 5'10" tall.

This version is made from a linen/viscose fabric.

# FIT NOTES

The Pogonip is designed to have a loose boxy fit. It is slightly cropped with the hem hitting just above your belt line. The hem and the sleeves are brought in with elastic making the fit adjustable and comfortable.

The Pogonip Pullover was drafted using sample measurements for a B bra cup and for a height of 5'6" [168cm].

For guidance on common fit adjustments, visit:

[fridaypatterncompany.com/pages/pogonip-pullover-fitting](http://fridaypatterncompany.com/pages/pogonip-pullover-fitting)

## SIZE CHART

<i>inches</i>	<b>XS</b>	<b>S</b>	<b>M</b>	<b>L</b>	<b>XL</b>	<b>XXL</b>
<b>CHEST</b>	32-33	34-35	36-37	38-39	40-43	44-46
<b>WAIST</b>	24-25	26-27	28-29	30-32	33-35	36-39
<b>HIPS</b>	34-35	35-36	37-38	39-41	42-45	46-49

<i>inches</i>	<b>1X</b>	<b>2X</b>	<b>3X</b>	<b>4X</b>	<b>5X</b>	<b>6X</b>	<b>7X</b>
<b>CHEST</b>	47-48	49-50	51-52	53-54	55-56	57-58	59-60
<b>WAIST</b>	40-41	42-43	44-45	46-47	48-49	50-51	52-53
<b>HIPS</b>	50-51	52-53	54-55	56-57	58-59	60-61	62-63

<i>cm</i>	<b>XS</b>	<b>S</b>	<b>M</b>	<b>L</b>	<b>XL</b>	<b>XXL</b>
<b>CHEST</b>	81-84	86-89	91-94	95-99	102-109	110-117
<b>WAIST</b>	61-64	66-69	71-74	76-81	84-89	91-99
<b>HIPS</b>	86-89	89-91	94-97	99-104	107-116	117-125

<i>cm</i>	<b>1X</b>	<b>2X</b>	<b>3X</b>	<b>4X</b>	<b>5X</b>	<b>6X</b>	<b>7X</b>
<b>CHEST</b>	119-122	124-127	130-132	134-137	140-142	145-147	150-152
<b>WAIST</b>	101-104	107-109	111-114	116-119	122-124	127-130	132-135
<b>HIPS</b>	127-130	132-135	137-140	142-145	147-150	152-155	157-160

## FINISHED GARMENT MEASUREMENTS

The measurements below are the dimensions of the garment after it is sewn. The 'Length' is measured from the top of the collar to the bottom of the hem.

<i>inches</i>	<b>XS</b>	<b>S</b>	<b>M</b>	<b>L</b>	<b>XL</b>	<b>XXL</b>	<b>1X</b>	<b>2X</b>	<b>3X</b>	<b>4X</b>	<b>5X</b>	<b>6X</b>	<b>7X</b>
<b>CHEST</b>	42	43	45	47	51	55	58	60	62	64	66	68	70
<b>WAIST</b>	42	43	45	47	51	55	58	60	62	64	66	68	70
<b>HIPS</b>	42	43	45	47	51	55	58	60	62	64	66	68	70
<b>SLEEVE LENGTH</b>	16.4	17	17.5	18.1	18.9	19.7	20.7	21.4	22.1	22.8	23.5	24.2	25
<b>BICEP</b>	18.3	18.4	18.6	18.7	18.9	19	19.2	19.3	19.4	19.5	19.7	19.8	20
<b>LENGTH</b>	24.1	24.5	24.8	25.1	25.6	26.1	26.6	26.9	27.3	27.6	28	28.3	28.6

<i>cm</i>	<b>XS</b>	<b>S</b>	<b>M</b>	<b>L</b>	<b>XL</b>	<b>XXL</b>	<b>1X</b>	<b>2X</b>	<b>3X</b>	<b>4X</b>	<b>5X</b>	<b>6X</b>	<b>7X</b>
<b>CHEST</b>	105	108	113	119	128	138	146	151	156	161	166	171	177
<b>WAIST</b>	105	108	113	119	128	138	146	151	156	161	166	171	177
<b>HIPS</b>	105	108	113	119	128	138	146	151	156	161	166	171	177
<b>SLEEVE LENGTH</b>	42	43	44	46	48	50	53	54	56	58	60	62	63
<b>BICEP</b>	46	47	47	48	48	48	49	49	49	50	50	50	51
<b>LENGTH</b>	61	62	63	64	65	66	68	68	69	70	71	72	73

## YARDAGE REQUIREMENTS

You may need to purchase extra yardage if your fabric has a heavy nap, is directional, striped, or has an obvious repeat.

**For all sizes you will need:**

- **3/4 yard [.7 meters] - 22"[56cm] wide fusible interfacing**
- **7/8 yard [.8 meters] - 45-60"[114-153cm] wide lining fabric**

<i>yards [meters]</i>	<b>XS - M</b>	<b>L - XXL</b>	<b>1X - 4X</b>	<b>5X - 7X</b>
<b>45" [114cm] Wide Fabric</b>	1.6 [1.5]	1.8 [1.6]	2.7 [2.5]	3.2 [2.9]
<b>54-60" [137-153cm] Wide Fabric</b>	1.4 [1.3]	1.6 [1.5]	2.5 [2.3]	2.7 [2.5]

# SUGGESTED ELASTIC LENGTHS

Elastic is sewn into the sleeve hems and body hem. Below are suggested lengths for each size. The suggested lengths include 1" [2.5cm] for the elastic to be overlapped and sewn together. The elastic at the hem brings it in so it is slightly cropped. If you would like the hem to sit lower on your hips consider lengthening the hem elastic.

You can also wait to cut your elastic until the step where it is sewn so that you can stretch it around your body and decide if you want to shorten or lengthen it.

## HEM ELASTIC

Cut 1 length of 1" [2.5cm] wide elastic for the hem of the jacket.

<i>inches</i> <i>[cm]</i>	<b>XS</b>	<b>S</b>	<b>M</b>	<b>L</b>	<b>XL</b>	<b>XXL</b>	<b>1X</b>	<b>2X</b>	<b>3X</b>	<b>4X</b>	<b>5X</b>	<b>6X</b>	<b>7X</b>
<b>HEM ELASTIC</b>	36 [91]	37 [94]	39 [99]	42 [107]	46 [117]	50 [127]	52 [132]	54 [137]	56 [142]	58 [147]	60 [152]	62 [157]	64 [163]




## SLEEVE HEM ELASTIC

Cut 2 lengths of 1" [2.5cm] wide elastic for the hems of the sleeves.

<i>inches</i> <i>[cm]</i>	<b>XS</b>	<b>S</b>	<b>M</b>	<b>L</b>	<b>XL</b>	<b>XXL</b>	<b>1X</b>	<b>2X</b>	<b>3X</b>	<b>4X</b>	<b>5X</b>	<b>6X</b>	<b>7X</b>
<b>HEM ELASTIC</b>	9 [23]	9 [23]	9 [23]	9 [23]	9.5 [24]	9.5 [24]	9.5 [24]	9.5 [24]	10 [25]	10 [25]	10 [25]	10 [25]	10 [25]

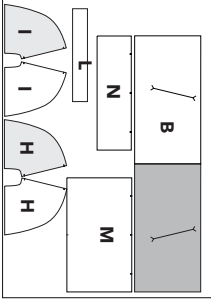


# CUTTING LAYOUTS

-  Right side of pattern piece
-  Wrong side of pattern piece
-  Indicates that you need to flip the pattern piece over to cut a pair

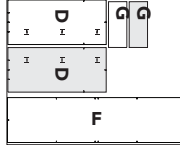
## LINING FABRIC

ALL SIZES // 45-60" [114-153cm] wide fabric



## FUSIBLE INTERFACING

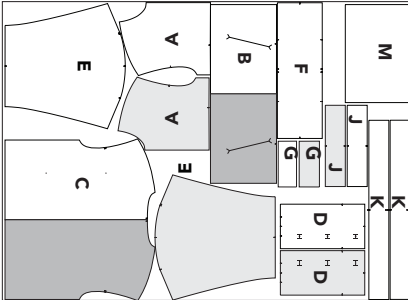
ALL SIZES // 22" [56cm] wide interfacing



## 45" [114cm] Wide Fabric

Fabric is illustrated opened up and laid flat.

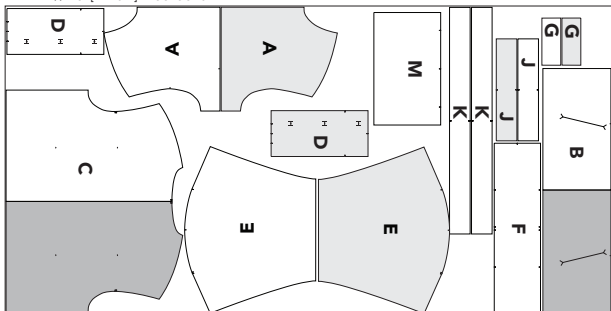
XS - M // 45" [114cm] wide fabric



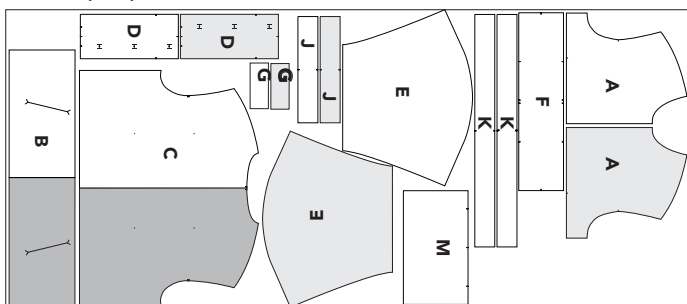
L - XXL // 45" [114cm] wide fabric



1X - 4X // 45"[114cm] wide fabric



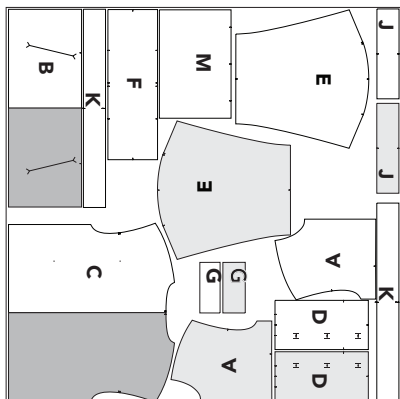
5X - 7X // 45"[114cm] wide fabric



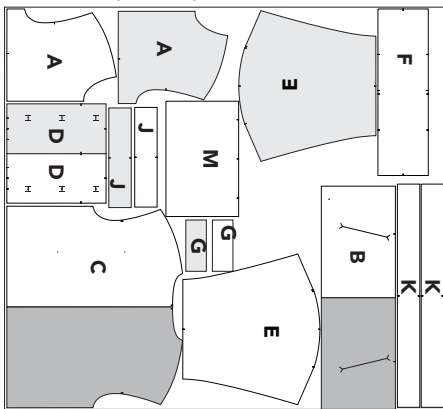
## 54-60"[137-153 cm] Wide Fabric

Fabric is illustrated opened up and laid flat.

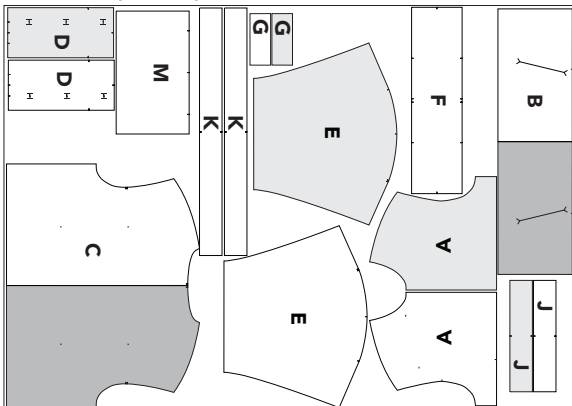
X5 - M // 54-60"[137-153cm] wide fabric



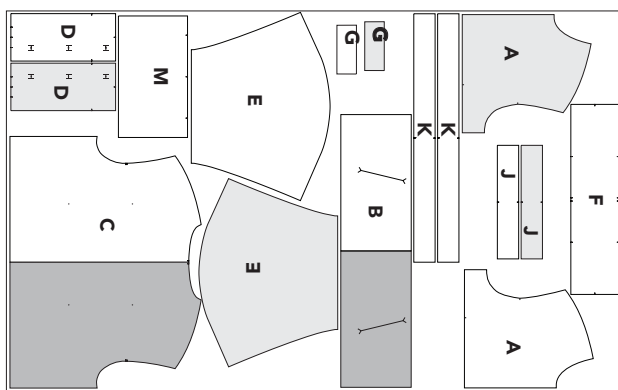
L - XXL // 54-60" [137-153cm] wide fabric



1X - 4X // 54-60" [137-153cm] wide fabric



5X - 7X // 54-60" [137-153cm] wide fabric



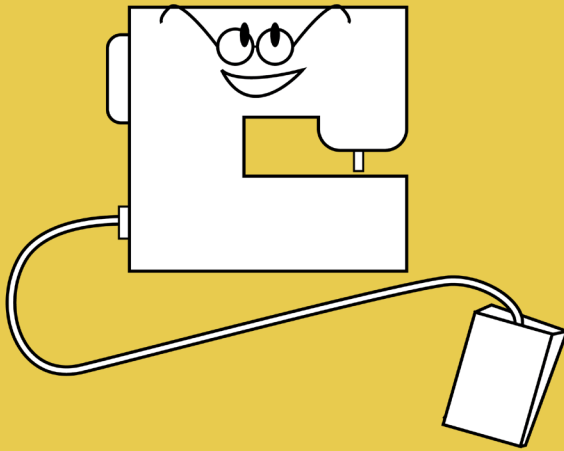
# FINISHING SEAMS

All of the raw edges along your seams need to be finished in some way so that they don't fray. There are a ton of ways to finish a seam. One of the easiest ways to finish a seam is to use a zig zag stitch. After you sew your seam, sew a zig zag stitch on the seam allowance overlapping the raw edge of the fabric. If you have a serger, serging your seam allowances creates a quick and professional-looking finish.

For more info on seam finishes you can watch our [YouTube tutorial](#).

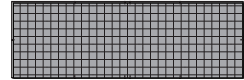
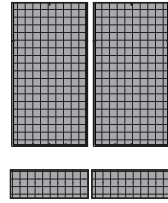


# LET'S SEW A JACKET!



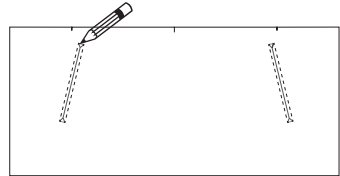
# PREP

- Snip in at all notches.
- Fuse interfacing to the wrong side of Front Placket (D) pieces.
- Fuse interfacing to the wrong side of Welt (G) pieces.
- Fuse interfacing to the wrong side of Collar (F) piece.

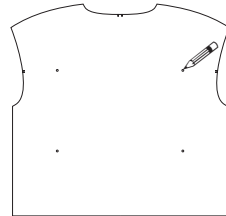


- Using chalk or a removable marker, mark welt pocket placement on right side of main fabric Lower Front (B).

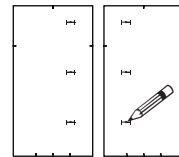
*Optional: Fuse interfacing on the wrong side of Lower Front (B) behind the welt placement if you want to add some extra stability to your welt opening.*



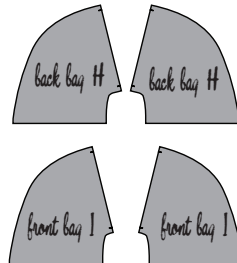
- Using chalk or a removable marker, mark packable pocket placement on the right side of Back (C).



- Using chalk or a removable marker, mark button/snap placement on the right side of Front Placket (D) pieces.



- Label pieces on a piece of tape. Some pieces look similar, especially Front Pocket Bag (I) and Back Pocket Bag (H).



# SEWING STEPS OVERVIEW

1. With RST, fold Welt (G) in half lengthwise. Sew down short edges. Flip right side out, press. Baste open edge closed at 1/4" [.6cm]. Repeat with both Welt (G) pieces.
2. With RST, pin Welt (G) in place on Main Lower Front (B). Baste in place 1/4" [.6cm] from the edge. Do not stitch past the edge of the welt. Repeat on both pockets.
3. With RST, pin Front Pocket Bag (I) to Lower Front (B) matching the straight edge up with the marked center line. Sew between notches using 3/8" seam allowance (without sewing past) backstitching at the beginning and end. Repeat on both pockets.
4. With RST, pin Back Pocket Bag (H) to Lower Front (B) matching the straight edge up with the marked line. Stitch between notches using a 3/8" [1cm] seam allowance without stitching past ends of the Welt (G). Backstitch at the beginning and end of this stitch. Repeat on both pockets.
5. Carefully cut your welt opening.
6. Pull Front Pocket Bag (I) and Back Pocket Bag (H) through the welt opening to the wrong side of Lower Front (B). Press well. Repeat on both pockets.
7. Understitch Front Pocket Bag (I) to the seam allowance between the notches. Repeat on both pockets.
8. Understitch Back Pocket Bag (H) to the seam allowance between the notches. Repeat on both pockets.
9. Flip Back Pocket Bag (H) down so it is sitting, RST, on top of Front Pocket Bag (I). Pin pocket bags together along upper and lower curved edges. Repeat on both pockets.
10. Stitch down curved edges. Press. Repeat on both pockets.
11. Working from the right side of your project, topstitch short sideseams of Welt (G) to Lower Front (B). Repeat on both pockets.
12. Using a 1/4" [.6cm] seam allowance, baste bottom of pocket bag in place along hem of Lower Front (B). Repeat on both pockets.
13. Trim 1/8" [3mm] off of each side of Lining Packable Pocket (M).
14. With wrong sides together, press Strap (L) in half lengthwise. Fold raw edges in so that they meet at the crease you just made and press again. Edgestitch along both sides of the strap.
15. Press the un-notched edge of Pocket Flap (N) under 3/8" [1cm] to the wrong side. Press it under another 3/8" [1cm] and edgestitch folded edge in place.
16. Fold the 1/4" [.6cm] elastic strip in half to make a loop. Pin it in place on the right side of your Main fabric Packable Pocket (M) piece centered over the top center notch. Baste in place 1/4" [.6cm] from the edge.
17. With the right sides of Main fabric Packable Pocket (M) and Pocket Flap (N) pieces both facing up, pin Pocket Flap (N) in place matching notches. Baste around side and upper edges of Pocket Flap (N) 1/4" [.6cm] from the edge.

18. Fold Strap (L) in half and with the right side of your pocket facing up, pin it to the side of your pocket overlapping the raw edges of your strap. Baste in place 1/4" [.6cm] from edge.
19. With RST pin Lining fabric Packable Pocket (M) in place on top of Main Fabric Packable Pocket (M), matching notches. Starting at the bottom, sew around all 4 sides using a 3/8" [1cm] seam allowance. Leave a 2" [5cm] unsewn opening at the bottom of your pocket. You will pull slightly on your lining as you sew because it is trimmed down.
20. Clip corners, flip right side out, press.
21. Sew across the top of the pocket 3/8" [1cm] from the edge.
22. With the right side of Back (C) and the main pocket side facing up, pin the pocket in place matching the corners up with the marks on your Back (C). Sew around the sides and bottom 1/8" [3mm] (or as close as possible) to the edge.
23. With RST, sew Upper Front (A) to Back (C) at shoulder seam. Finish seam, press toward back. Repeat on both sides.
24. Pre-press one long edge of Collar (F) under 3/8" [1cm] to the wrong side.
25. With RST, pin the un-pressed edge of Collar (F) to the neckline of your jacket matching notches. Stitch, clip the seam allowance along the neckline, press seam allowance toward the collar.
26. Fold the pre-pressed edge of Collar (F) down so that it just overlaps the seam. From the right side of your project, stitch in the ditch to secure it in place.
27. Pre-press the long edge of Front Placket (D) that isn't next to your button/snap markings under 3/8" [1cm] to the wrong side. Repeat with both placket pieces.
28. With RST, fold Front Placket (D) in half lengthwise at the center notch. Stitch across the top edge (the edge with only 1 notch) preserving your pre-pressed edge. Flip right side out. Press. Repeat with both Front Placket (D) pieces.
29. With RST, pin the un-pressed edge of Front Placket (D) to front/collar. Stitch, press seam allowance toward placket. Repeat on both sides.
30. Bring pre-pressed edge of placket around so that it just overlaps your last seam. From the front of your project, stitch in the ditch down the length of your placket being sure to backstitch at the top. Repeat on both sides.
31. Overlap plackets at the base matching notches. Baste in place 1/4" [.6cm] from the edge.
32. With RST, pin Upper Front (A) to Main Lower Front (B) matching notches. Stitch 1/4" [.6cm] from the edge of fabric.
33. Pin the right side of Lining Lower Front (B) to the wrong side of Upper Front (A), so that Upper Front is sandwiched between the two Lower Fronts. Stitch, press lower fronts away from Upper Front.
34. With wrong sides together, baste lining to main Lower Front around sides and bottom, 1/4" [.6cm] from the edge.

35. With RST, pin Sleeve (E) to your armscye. Stitch around armscye, finish seam edge. Press seam toward sleeve. Repeat on both sides.
36. With RST, fold your project in half matching up underarms and side seams. Stitch. Finish seam, press it toward the back. Repeat on both sides.
37. With RST, fold Sleeve Elastic Casing (J) in half matching short ends. Stitch, press seam open. With wrong sides together fold casing in half lengthwise all the way around. Press. Repeat on both Sleeve Elastic Casing (J) pieces.
38. With RST, pin Sleeve Elastic Casing (J) to the hem of Sleeve (E) matching notches. Stitch around hem of sleeve leaving a 2"[5cm] opening. Repeat on both sleeves.
39. Take your length of sleeve hem elastic. Attach a safety pin to the end. Run it through your Sleeve Elastic Casing (J). Overlap the ends of the elastic by 1/2"[1.3cm] and sew the ends together using a zig zag stitch. Repeat on both sleeves.
40. Sew the 2"[5cm] opening left on your casing shut. Finish seam. Press the seam allowance toward the sleeve. Repeat on both sleeves.
41. With RST, match up the short ends of Hem Elastic Casing (K) pieces. Stitch, press seams open. With wrong sides together fold casing in half lengthwise all the way around. Press.
42. With RST, pin Hem Elastic Casing (K) to the hem of your jacket matching sideseams and notches. Stitch around hem leaving a 2"[5cm] opening.
43. Take your length of hem elastic attach a safety pin to the end. Run it through your Hem Elastic Casing (K). Overlap the ends of the elastic by 1/2"[1.3cm] and sew the ends together using a zig zag stitch.
44. Sew the 2"[5cm] opening left on your casing shut. Finish seam. Press the seam allowance away from casing.
45. Follow your sewing machine or snap setter instructions to sew buttonholes/buttons or snaps in place along the front of your placket.
46. If you added the packable pocket, hand sew a button in place on the Back (C) above your elastic loop.

# SEWING

Seam allowance is 3/8" [1cm] unless otherwise stated.



Right side of main fabric



Wrong side of main fabric



Interfacing



Right side of lining fabric



Wrong side of lining fabric

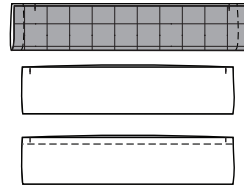
## WELT POCKET SEWING STEPS:

Welt pockets can be tricky but we believe in you! If this is the first time you have sewn a welt pocket you may want to sew a practice pocket before starting on your project.

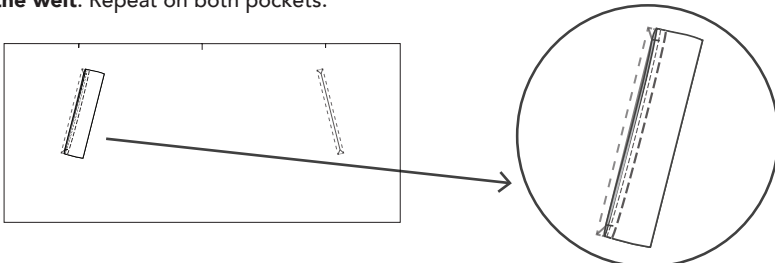
We have a video tutorial where we break down and demonstrate each step. If you are a visual learner it may be easier to follow. Check out our free video sewalong at:

[bit.ly/pogonip-welt-video](http://bit.ly/pogonip-welt-video)

1. With right sides together (RST), fold Welt (G) in half lengthwise. Sew down short edges. Clip corners, flip right side out, press. Baste open edge closed at 1/4" [1.6cm]. Repeat with both Welt (G) pieces.

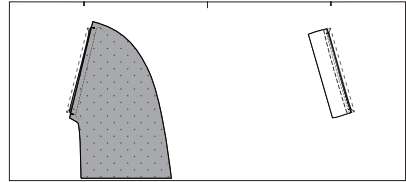
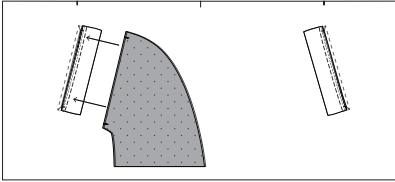


2. With RST, pin Welt (G) in place on Main Lower Front (B). The raw edges of Welt (G) matches up with the marked center line. The unsewn edge of Welt (G) is pointed toward the side of Lower Front (B) and the notches match up with the point on the line where the little 'v's start. Baste in place 1/4" [1.6cm] from the edge. **Do not stitch past the edge of the welt.** Repeat on both pockets.

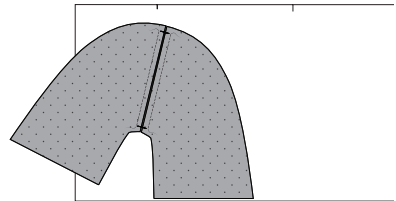


Seam allowance is 3/8" [1cm] unless otherwise stated

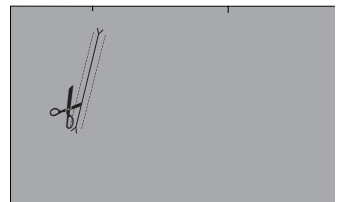
3. With RST, pin Front Pocket Bag (I) to Lower Front (B) matching the straight edge up with the marked center line. Welt (G) will be sandwiched in the middle. The notches on Front Pocket Bag (I) will match up with the ends of Welt (G). Sew between notches using 3/8" seam allowance (without sewing past) backstitching at the beginning and end. Repeat on both pockets.



4. With RST, pin Back Pocket Bag (H) to Lower Front (B) matching the straight edge up with the marked line. It will butt up against your Front Pocket Bag (I). The notches match up with the ends of the marked center line. Stitch between notches using a 3/8" [1cm] seam allowance without stitching past ends of the Welt (G). Be sure to backstitch at the beginning and end of this stitch. Repeat on both pockets.



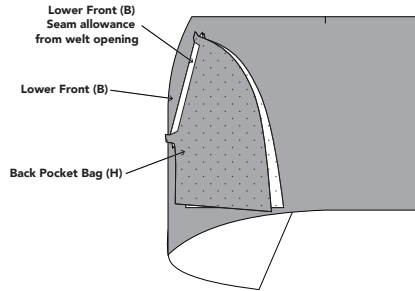
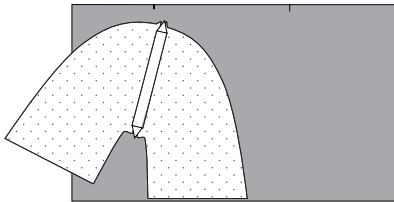
5. Carefully cut your welt opening. Push seam allowances out of the way to cut along the marked line on Lower Front (B). This can be scary but if you use sharp scissors and go slow you can do it.



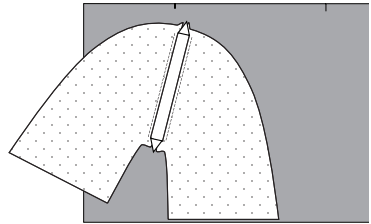
Follow the guide to cut diagonal snips right up to the seam lines without snipping through. If the basting stitch where you joined Welt (G) to Lower Front (B) is in the way, remove it. You are going to want to cut as close to those seam lines as possible to avoid puckers. Repeat on both pockets.

Seam allowance is 3/8" [1cm] unless otherwise stated

6. Pull Front Pocket Bag (I) and Back Pocket Bag (H) through the welt opening to the wrong side of Lower Front (B). Welt (G) will stay on the right side of Lower Front (B) and be pressed up toward the side seam. The little triangles on sides of your welt opening are pressed out away from the welt opening. If you are getting puckers on the front carefully snip closer to your seams. Press well. Repeat on both pockets.

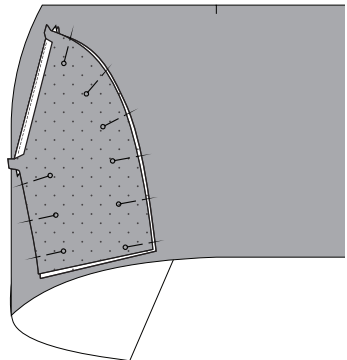


7. Understitch Front Pocket Bag (I) to the seam allowance between the notches, be sure you are only catching the seam allowance and bag. Repeat on both pockets.



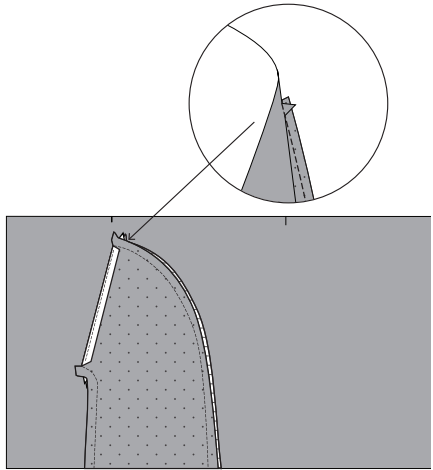
8. Understitch Back Pocket Bag (H) to the seam allowance between the notches, be sure you are only catching the seam allowance and bag. Repeat on both pockets.

9. Flip Back Pocket Bag (H) down so it is sitting, RST, on top of Front Pocket Bag (I). Pin pocket bags together along upper and lower curved edges. Repeat on both pockets.

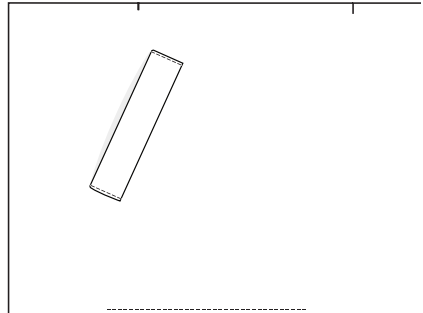


Seam allowance is 3/8" [1cm] unless otherwise stated

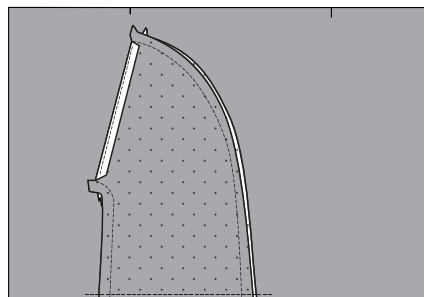
10. Stitch down curved edges. When you are stitching near the welt opening, catch the triangle bit in your seam and sew as close to the welt opening as you can. Press. Repeat on both pockets.



11. Working from the right side of your project, topstitch short side seams of Welt (G) to Lower Front (B). Be sure to backstitch. Repeat on both pockets.



12. Using a 1/4" [.6cm] seam allowance, baste bottom of pocket bag in place along hem of Lower Front (B). Repeat on both pockets.



Seam allowance is 3/8" [1cm] unless otherwise stated

## PACKABLE POCKET SEWING STEPS:

Seam allowance is 3/8" [1cm] unless otherwise stated.



Right side of main fabric



Wrong side of main fabric



Interfacing



Right side of lining fabric

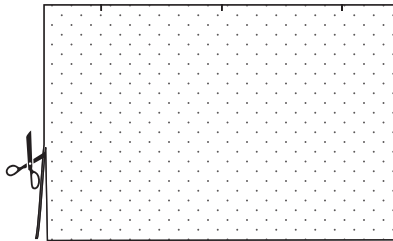


Wrong side of lining fabric



The packable pocket is optional. It is assembled and sewn to the back of the jacket. If you aren't adding a packable pocket, skip to step 23.

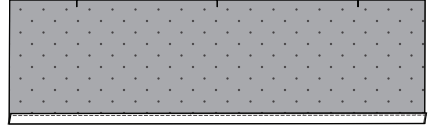
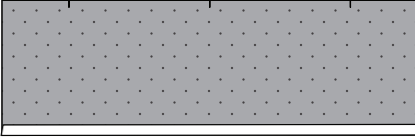
13. Trim 1/8" [3mm] off of each side of Lining Packable Pocket (M). Only trim the lining, not the main fabric piece.



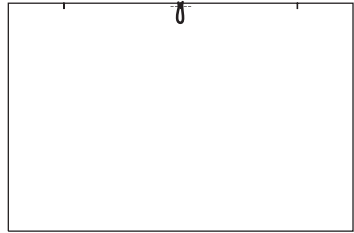
14. With wrong sides together, press Strap (L) in half lengthwise. Fold raw edges in so that they meet at the crease you just made and press again. Edgestitch along both sides of the strap.



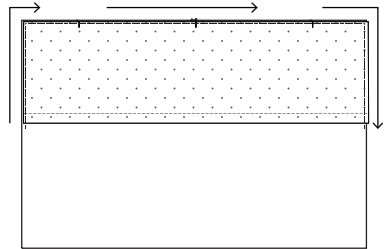
15. Press the un-notched edge of Pocket Flap (N) under  $3/8"$  [1cm] to the wrong side. Press it under another  $3/8"$  [1cm] and edgestitch folded edge in place.



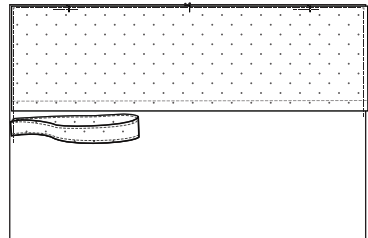
16. Fold the  $1/4"$  [.6cm] elastic strip in half to make a loop. Pin it in place on the right side of your Main fabric Packable Pocket (M) piece centered over the top center notch. Baste in place  $1/4"$  [.6cm] from the edge.



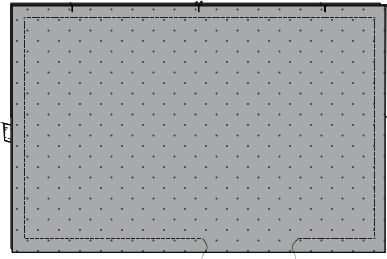
17. With the right sides of Main fabric Packable Pocket (M) and Pocket Flap (N) pieces both facing up, pin Pocket Flap (N) in place matching notches. Baste around side and upper edges of Pocket Flap (N)  $1/4"$  [.6cm] from the edge.



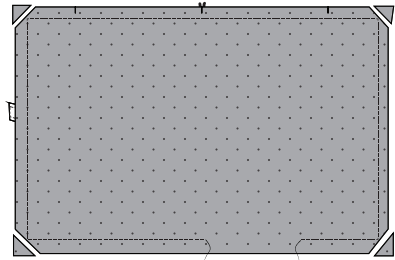
18. Fold Strap (L) in half and with the right side of your pocket facing up, pin it to the side of your pocket overlapping the raw edges of your strap. Baste in place  $1/4"$  [.6cm] from edge.



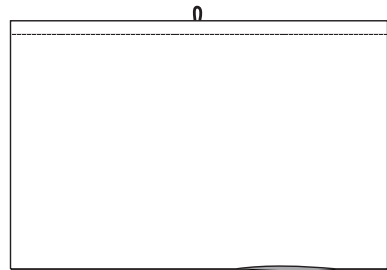
19. With RST pin Lining fabric Packable Pocket (M) in place on top of Main Fabric Packable Pocket (M), matching notches. The elastic loop, strap, and flap will all be sandwiched inside. Starting at the bottom, sew around all 4 sides using a 3/8" [1cm] seam allowance. Leave a 2" [5cm] unsewn opening at the bottom of your pocket. You will pull slightly on your lining as you sew because it is trimmed down. Be careful not to catch the strap in this step.



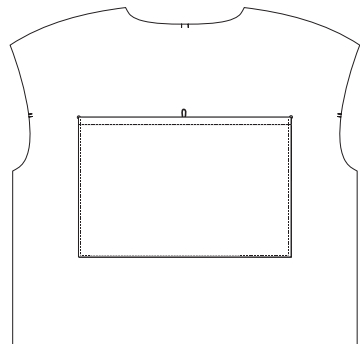
20. Clip corners, flip right side out, press.



21. Sew across the top of the pocket 3/8" [1cm] from the edge.



22. With the right side of Back (C) and the main pocket side facing up, pin the pocket in place matching the corners up with the marks on your Back (C). Sew around the sides and bottom 1/8" [3mm] (or as close as possible) to the edge. Be sure to backstitch at the beginning and end of your stitch. In this step you are closing up the opening left at the bottom of the pocket in step 19.



## MAIN BODY SEWING STEPS:

Seam allowance is 3/8" [1cm] unless otherwise stated.



Right side of main fabric



Wrong side of main fabric



Interfacing



Right side of lining fabric

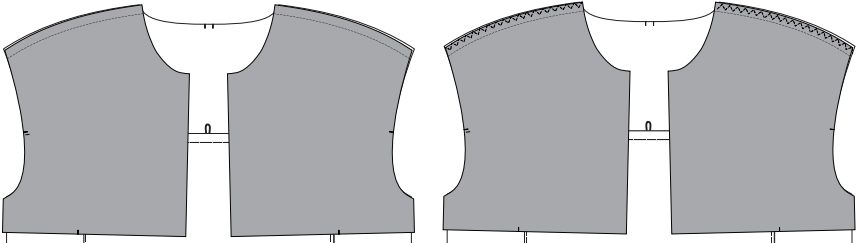


Wrong side of lining fabric

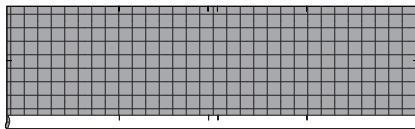


You're past the trickiest parts! Now we are going to assemble the body of your jacket. You'll be warm and cozy in no time!

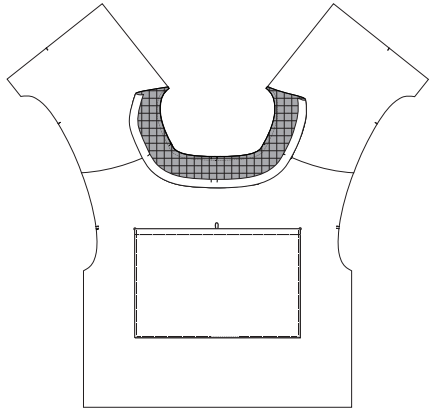
23. With RST, sew Upper Front (A) to Back (C) at shoulder seam. Finish seam, press toward back. Repeat on both sides.



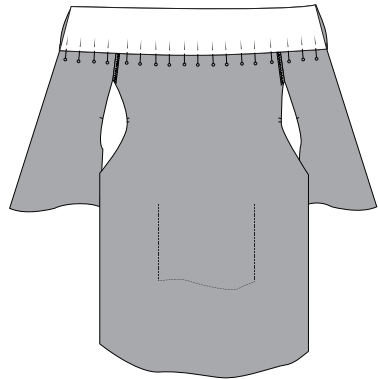
24. Pre-press one long edge of Collar (F) under 3/8" [1cm] to the wrong side.



25. With RST, pin the un-pressed edge of Collar (F) to the neckline of your jacket matching notches. Stitch, clip the seam allowance along the neckline, press seam allowance toward the collar.

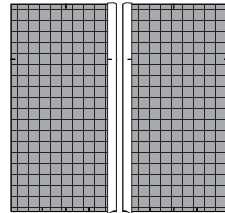


26. Fold the pre-pressed edge of Collar (F) down so that it just overlaps the seam. From the right side of your project, stitch in the ditch to secure it in place.

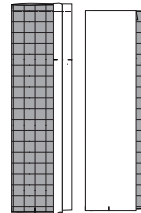


*OPTIONAL: For an invisible finish, you can sew this by hand.*

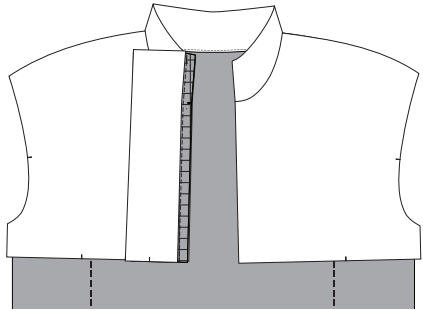
27. Pre-press the long edge of Front Placket (D) that isn't next to your button/snap markings under  $3/8"$  [1cm] to the wrong side. Repeat with both placket pieces.



28. With RST, fold Front Placket (D) in half lengthwise at the center notch. Stitch across the top edge (the edge with only 1 notch) preserving your pre-pressed edge. Flip right side out. Press. Repeat with both Front Placket (D) pieces.

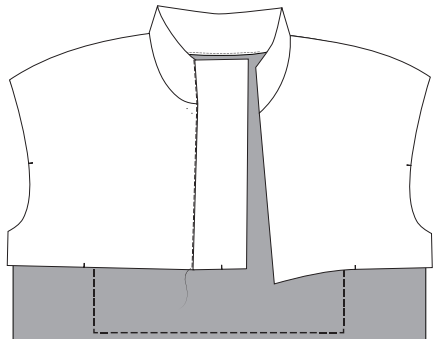


29. With RST, pin the un-pressed edge of Front Placket (D) to front/collar. Stitch, press seam allowance toward placket. Repeat on both sides.

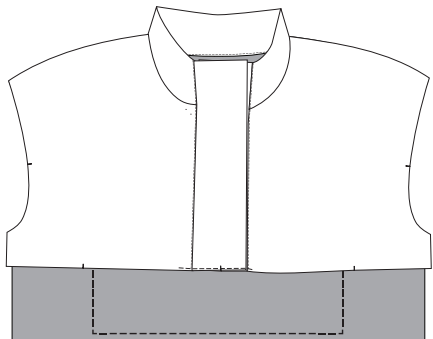


30. Bring pre-pressed edge of placket around so that it just overlaps your last seam. From the front of your project, stitch in the ditch down the length of your placket being sure to backstitch at the top. Repeat on both sides.

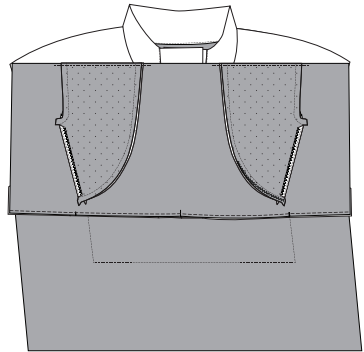
*OPTIONAL: For an invisible finish, you can sew this by hand.*



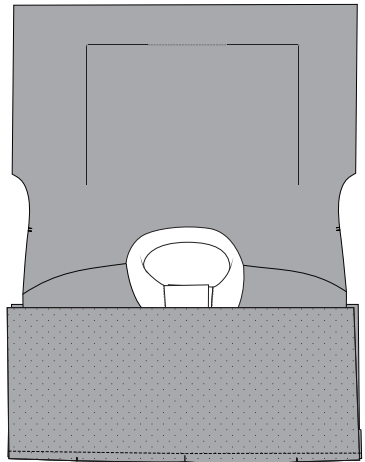
31. Overlap plackets at the base matching notches. Baste in place 1/4" [.6cm] from the edge. Traditionally the wearer's right side would go on top so that the buttons would be on the wearer's left, but that doesn't matter! Put whichever side you want on top.



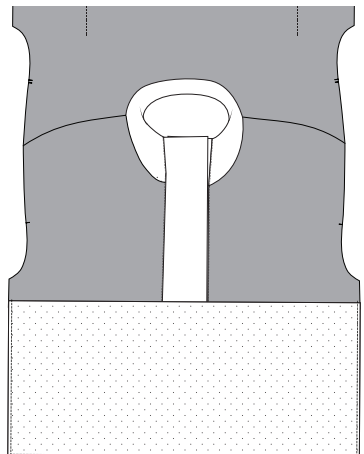
32. With RST, pin Upper Front (A) to Main Lower Front (B) matching notches. Stitch  $1/4"$ [.6cm] from the edge of fabric.



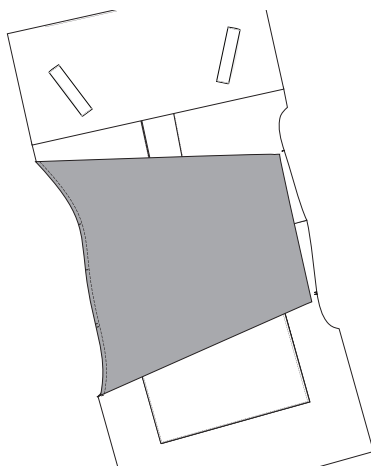
33. Pin the right side of Lining Lower Front (B) to the wrong side of Upper Front (A), so that Upper Front is sandwiched between the two Lower Fronts. Stitch, press lower fronts away from Upper Front.



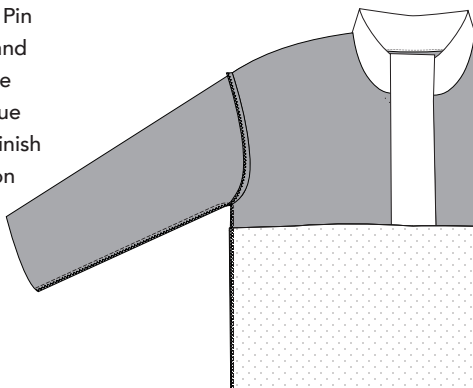
34. With wrong sides together, baste lining to main Lower Front around sides and bottom,  $1/4"$ [.6cm] from the edge.



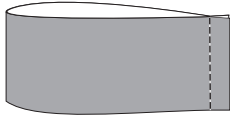
35. With RST, pin Sleeve (E) to your armscye matching single notches on front of sleeve, the double notch on the back of your sleeve, and the center notch with the shoulder seam. Stitch around armscye, finish seam edge. Press seam toward sleeve. Repeat on both sides.



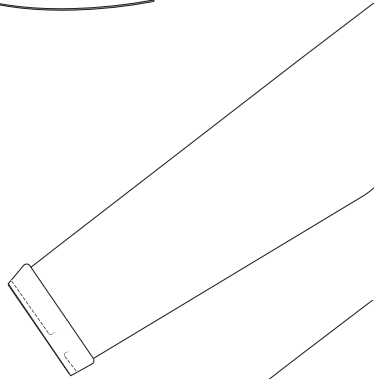
36. With RST, fold your project in half matching up underarms and side seams. Pin in place making sure to match up hems and underarm seams. Sew from hem of sleeve to underarm seam then pivot and continue sewing down to the hem of the jacket. Finish seam, press it toward the back. Repeat on both sides.



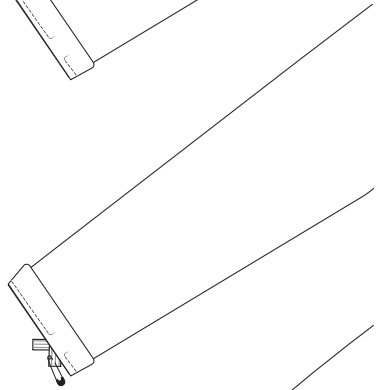
37. With RST, fold Sleeve Elastic Casing (J) in half matching short ends. Stitch, press seam open. With wrong sides together fold casing in half lengthwise all the way around. Press. Repeat on both Sleeve Elastic Casing (J) pieces.



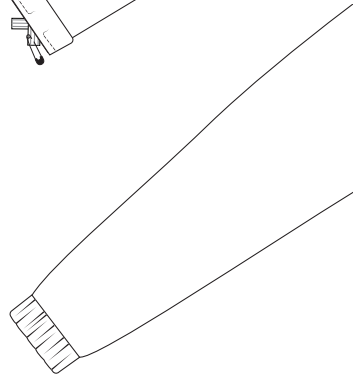
38. With RST, pin Sleeve Elastic Casing (J) to the hem of Sleeve (E) matching notches. The seam on the casing matches up with the underarm seam on the sleeve. Stitch around hem of sleeve leaving a 2" [5cm] opening. Repeat on both sleeves.



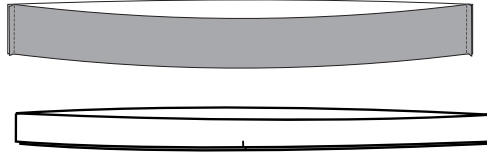
39. Take your length of sleeve hem elastic (suggested elastic lengths for each size are listed on page 11). Attach a safety pin to the end. Run it through your Sleeve Elastic Casing (J). Make sure the elastic hasn't gotten twisted along the way. Overlap the ends of the elastic by 1/2" [1.3cm] and sew the ends together using a zig zag stitch. Be sure to backstitch. Repeat on both sleeves.



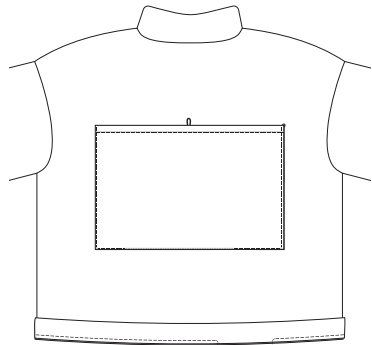
40. Sew the 2" [5cm] opening left on your casing shut. Finish seam. Press the seam allowance toward the sleeve. Repeat on both sleeves.



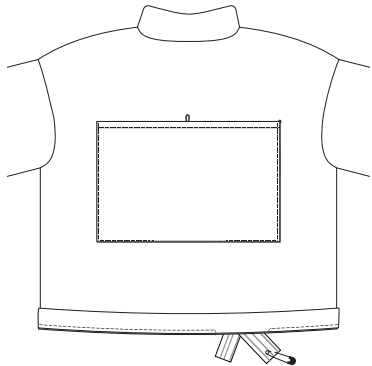
41. With RST, match up the short ends of Hem Elastic Casing (K) pieces. Stitch, press seams open. With wrong sides together fold casing in half lengthwise all the way around. Press.



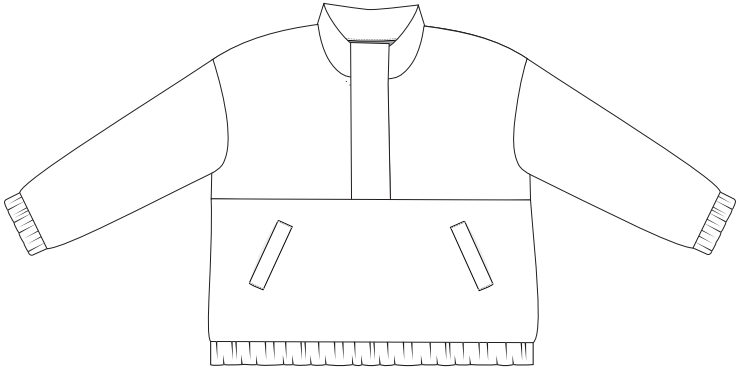
42. With RST, pin Hem Elastic Casing (K) to the hem of your jacket matching side seams and notches. Stitch around hem leaving a 2" [5cm] opening.



43. Take your length of hem elastic (suggested elastic lengths for each size are listed on page 11). Attach a safety pin to the end. Run it through your Hem Elastic Casing (K). Make sure the elastic hasn't gotten twisted along the way. Overlap the ends of the elastic by 1/2" [1.3cm] and sew the ends together using a zig zag stitch. Be sure to backstitch.



44. Sew the 2"[5cm] opening left on your casing shut. Finish seam. Press the seam allowance away from casing.



45. Follow your sewing machine or snap setter instructions to sew buttonholes/buttons or snaps in place along the front of your placket.

46. If you added the packable pocket, hand sew a button in place on the Back (C) above your elastic loop.

That's it! Congratulations, you've just finished sewing yourself a rad new jacket!

For any questions regarding this pattern, please email the  
Friday Sewing Pattern Helpline:

[hello@fridaypatterncompany.com](mailto:hello@fridaypatterncompany.com)



[@fridaypatterncompany](https://www.instagram.com/fridaypatterncompany)

share your makes:

[#FridayPatternCompany](https://www.instagram.com/hashtag/fridaypatterncompany)

[#PogonipPullover](https://www.instagram.com/hashtag/pogonippullover)



Thank you for purchasing this pattern!

5% of the proceeds from this pattern go to:

Monarch Services ([www.monarchsc.org](http://www.monarchsc.org))

This pattern is for personal and non-profit use only. If you are  
interested in licensing it for commercial use, please email:

[hello@fridaypatterncompany.com](mailto:hello@fridaypatterncompany.com)

