

The

ENGLISH HOME



SUMMER
LIVING
SPECIAL

Celebrating the essence of English style

June 2023 | Issue 220 | £4.99 | UK Edition

THE GREAT OUTDOORS

Easy, elegant summer living at its best

Paint perfection

Professional
secrets for
using colour
& finishes

GLORIOUS GARDENS

Create beautiful
spaces for relaxing
& entertaining

EXPERT GUIDES

- Garden furniture
- Outdoor fabrics
- Keeping chickens

SEASIDE & RURAL HOMES

From a fisherman's cottage to a listed manor house



THE
WHITE KITCHEN
COMPANY





Beautiful Bespoke Kitchens
thewhitekitchencompany.com
01604 435835

WESTLAND LONDON

SPECIALISTS IN ANTIQUE FIREPLACES & FINE ANTIQUES SINCE 1969



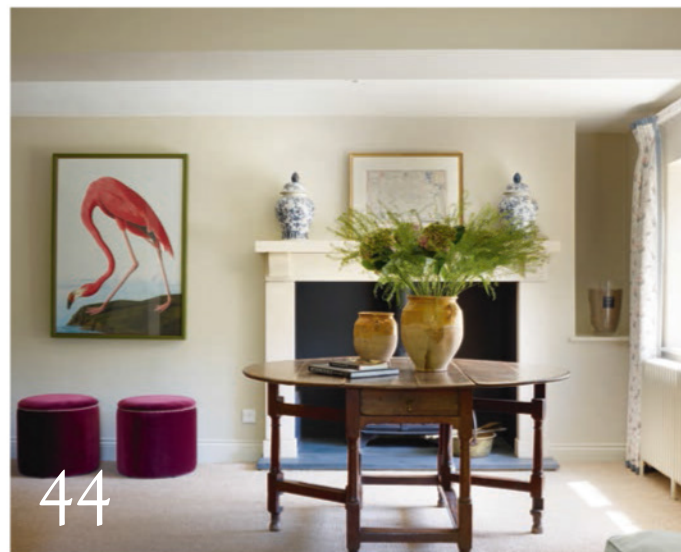
295 WILLESDEN LANE, LONDON, NW2 5HY
TUBE: WILLESDEN GREEN (JUBILEE LINE)

www.westlandlondon.com

TEL: +44 (0) 207 739 8094
e-mail: westland@westlandlondon.com

CONTENTS

JUNE 2023



Notebook

- 15 NEWS** Our monthly digest of notable people, places and products.
- 22 DESIGN DISCOVERIES** Versatile pieces for indoor and outdoor living.
- 28 STRENGTH AND BEAUTY** Elegant and stylish bamboo-inspired designs.
- 30 TRAY CHIC** Eye-catching, textural trays to elevate the everyday.
- 33 THE EDIT** The pieces and new collections catching our attention.
- 35 SUBSCRIBE** Treat a loved one or yourself to a subscription to *The English Home*.

English Homes

- 36 ALL IS QUIET** A palette inspired by the picturesque views has reinvigorated this family home in rural Wiltshire.
- 46 MADE FOR THE MANOR** This historic house has been given a new lease of life with elegant furnishings and finishing touches.
- 54 SECRETS WITHIN** Traditional elements with unexpected twists have transformed this 17th-century Grade II listed manor.
- 64 CALL OF THE SEA** Colour and comfort are at the heart of this renovation of a former childhood home.

Style Inspiration

- 73 PATTERN FLAIR** Covetable tiles for splashbacks, bathrooms and hallways.
- 74 CAPTIVATING PERFORMANCE** Interior-style weather-resistant fabrics created for outdoor use.
- 82 A CELEBRATION OF STYLE** An exclusive preview of Nicky Haslam's Legend Room at this year's WOW!house.
- 85 ENDURING IMPACT** A comprehensive guide to paint finishes from velvet-like matt to high gloss.
- 94 CHOOSING COLOUR** Kassia St Clair shares her advice on harnessing the power of colour in the home. ▶

WESTLAND LONDON

SPECIALISTS IN ANTIQUE FIREPLACES & FINE ANTIQUES SINCE 1969



295 WILLESDEN LANE, LONDON, NW2 5HY
TUBE: WILLESDEN GREEN (JUBILEE LINE)

www.westlandlondon.com

TEL: +44 (0) 207 739 8094
e-mail: westland@westlandlondon.com



94



106



74

98 AN INTERIORS GUIDE TO PIMLICO ROAD
Our Little Black Book of places to visit in London's premier design district.

Quintessentially

- 105 GOOD ENOUGH TO EAT** Enliven dishes and drinks with edible geraniums.
- 106 WHAT TO DO IN JUNE** Inspiring activities to enjoy this month.
- 113 THE GREAT OUTDOORS** The best buys and design ideas to make the most of the garden from morning to night.
- 122 CHICKEN RUN** Author and gardener Arthur Parkinson gives his expert advice on keeping chickens.
- 130 ONE FINAL THING** A colourful garden project to make from leftover fabric.



36

— THE —
**NATURAL
WOOD FLOOR**

Co



Beautiful flooring, designed to last

Over 100 designs | Expert advice | 20,000m² of stock | Express delivery

SHOWROOM

20 Smugglers Way, Wandsworth, London, SW18 1EG
020 8871 9771

www.naturalwoodfloor.co.uk



Once the preserve of interiors, create a luxurious scheme with outdoor fabrics such as these from Villa Nova, page 74

A letter from home



There seems to be a consensus amongst the interior designers and industry experts that we speak with regularly at *The English Home* and it's one that resonates at this time of year. Not only do the interiors we create in our homes continue to be vital to our wellbeing following the world events

of the last few years, but there is a renewed focus on transforming our gardens into comfortable, usable outdoor living spaces too. From large scale projects where outbuildings are converted to lavish 'party barns' to more humble yet beautiful balconies, where planting becomes vertical and built in seating enables every inch of space to be utilised; there is a desire to extend how we live to encompass outdoor space whilst the weather permits (and even plenty of products to reduce the impact of it spoiling our enjoyment when it doesn't!)

This issue brings plenty of inspiration for re-thinking how to design and enjoy whatever outdoor space we have in our English homes. We have come to think about larger gardens as a series of 'rooms', cleverly zoned to make the most of specific pursuits on page 113. Whilst our feature on decorating with high performance fabrics, contains inspiration for dressing and layering print and pattern with the kind of attention formerly reserved for interiors (page 74). Arthur Parkinson also contributes with his unique guide to keeping chickens - once a classic country house pursuit, his insights are welcome at a time of egg shortages and bird flu. However you intend to use yours this summer, an English garden is a welcome retreat, a space to enjoy nature, soak up the sunshine with friends, entertain, re-charge or escape to and above all, to enjoy.

Samantha

Samantha Scott-Jeffries, Editor



LAURA ASHLEY

SINCE 1953

lauraashley.com



CHARLOTTE GAISFORD

British Boutique Fabric and Wallpaper Designer



New collection Dreaming Garden

CHARLOTTEGAISFORD.CO.UK

The ENGLISH HOME

CONTACT US

Editorial 020 7349 3700

The English Home, Jubilee House,
2 Jubilee Place, London SW3 3TQ

Email theenglishhome@chelseamagazines.com

Website theenglishhome.co.uk

Advertising/Publishing 020 7349 3700

The Chelsea Magazine Company Ltd

Email info@chelseamagazines.com

EDITORIAL

Editor Samantha Scott-Jeffries

Managing Editor Sarah Feeley

Art Editors Claire Hicks, Rebecca Stead

Acting Art Editor Andrea Lynch

Sub Editor Lea Tacey

Decorating Editor Katy Mclean

Features Editor Suzanna Le Grove

Editor-at-Large Kate Freud

Editorial Assistant Charlotte Dunford

ADVERTISING

Group Sales Director Catherine Chapman

020 7349 3709; catherine.chapman@chelseamagazines.com

Head of Sales Operations Jodie Green

Group Account Director Natasha Scroggs

020 7349 3733; natasha.scroggs@chelseamagazines.com

Advertisement Manager William Bernard

020 7349 3749; william.bernard@chelseamagazines.com

Senior Sales Executive Laura Barry

020 7349 3712; laura.barry@chelseamagazines.com

Advertising Production 01202 472781; allpointsmidia.co.uk

PUBLISHING

Managing Director James Dobson

Chief Financial Officer Vicki Gavin

Publisher Caroline Scott

Marketing Manager Bret Weekes

Publishing Executive Annabelle Lee

ONLINE

Group Digital Manager Ben Iskander

Email & Digital Creative Manager Jenny Choo

PRODUCTION

Reprographics Manager Neil Puttnam

Printing William Gibbons Ltd

NEXT ISSUE ON SALE 31 MAY 2023

THE ENGLISH HOME (UK EDITION) ISSN 1468-0238 (PRINT)

THE ENGLISH HOME (UK EDITION) ISSN 2397-7086 (ONLINE)

Did you know you can manage your subscription online? Oversee your print and digital subscriptions online today simply by signing up at www.subscription.co.uk/chelsea/Solo/. Stay up to date with the latest issues, update your personal details, and even renew your subscription with just a click of a button.

SUBSCRIPTION ENQUIRIES

01858 438 854

SUBSCRIPTION OFFICE

The English Home
Tower House, Lathkill Street
Market Harborough
Leicestershire LE16 9EF
Tel 01858 438 854

Email theenglishhome@subscription.co.uk
(UK and Rest of World)

SUBSCRIPTION RATES (12 issues)

UK £70
Europe £90; €116
ROW £100; USD \$122; AUD \$181

NEWS DISTRIBUTION

Seymour Distribution Ltd
2 East Poultry Avenue
London EC1A 9PT
Tel 020 7429 3667



COVER PHOTOGRAPH © RACHAEL SMITH
ILLUSTRATION © 4ZEVAR SHUTTERSTOCK





Classic Styling with Dimmable Control

SOHOLIGHTING.COM | 0208 106 1221



For further inspiration on creating a quintessentially English home, visit our website, listen to our podcast or catch up on our socials



Visit us online for...

- + Room-by-room decorating advice
- + Interviews with top interior designers
- + Invaluable buyers' guides

LISTEN TO OUR PODCAST

All episodes available now



Download *The English Home* podcast for insider know-how, seasonal inspiration and dos and don'ts. Leading industry names including Nina Campbell, Kit Kemp and Farrow & Ball's colour curator Joa Studholme share their expert advice and top tips for achieving the best results in your home.

podcast.theenglishhome.co.uk

theenglishhome.co.uk

FOLLOW US ON...



Twitter @englishhometeam

Pinterest at pinterest.com/theenglishhome

Facebook at facebook.com/theenglishhome

Instagram at instagram.com/englishhomemag



For those who cherish the timeless

Designing and crafting truly bespoke kitchens and furniture

christopherpeters.com

CB
CORNISH BED^{CO.}



The Agnes



Authentic. Traditional. British.

HANDCAST IN CORNWALL TO LAST FOR GENERATIONS

NOTEBOOK

Our monthly edit of news, shopping inspiration and inside information ►



SPOTLIGHT ON...

The Healing Power Of Clay

Ceramicist **Florence St George's** new book explores how clay has the power to heal the mind and unleash creativity. "Seven years ago, my pottery journey began, initially to try and help overcome post-natal depression," she says. "Soon the clay took hold in a way I'd never imagined possible - the healing, the flow, the energy it gave me was so unexpected. Making ceramics became a passion and a new calling." *The Potter's Way* by Florence St George, £16.99, published by Short Books. florencestgeorge.com ►



House of Hues Bath's new paint palace

Colourist Cassandra Ellis has transformed a four-storey townhouse in Bath into a quiet sanctuary for paint, art and more. She founded Atelier Ellis in 2018 – making and selling her own deeply pigmented, high-quality, water-based, breathable paint, full of natural materials and carefully formulated to be virtually VOC-free. This paint adorns the walls of her brand's newly opened flagship space, which is located in Bath's artisan quarter of Walcot Street and embraces a quietly undone aesthetic.

The full spectrum of Atelier Ellis colours is available to buy on the ground floor, with a team on hand to share and mix colours on request. Other floors in the townhouse feature a bespoke design room where Cassandra will host one-to-one colour consultations by appointment, and contemplative spaces

showcasing seasonal exhibitions, debuting with an exhibition of works by Pottery West and photographer Jessica MacCormick.

"I started Atelier Ellis to help people tell their story of home," says Cassandra. "People need space, shadows, art and inspiration to find out how they would like to live and the colours that will help them tell that story. And I want them to feel at the centre – that we are gently wrapping them and encouraging them to take their freedom."

To celebrate the new opening, Cassandra has launched Beginnings, a new palette of nine colours, as a poetic tribute to the city of Bath, to creative freedom, and to the rhythmic migration of birds that marks the changing of the seasons.

atelierellis.co.uk

Naturally Kind

Friends launch natural home products

Alarmed at the effect of cleaning products' harsh chemicals on their children's health, and plastic packaging ending up in landfill, friends Caroline Jones and Anita Parker-Elms launched MadeKind, creating their own natural, safe and effective cleaning products in chic refillable amber glass bottles.

"We noticed the effect on our children, such as asthma, regular headaches and outbreaks of eczema," says Caroline.

"The idea that you need toxic chemicals to kill bacteria and cut through grease and grime simply isn't true," says Anita, "Plenty of natural ingredients have powerful antibacterial and antiseptic properties. Not only can the chemicals in regular household cleaners poison the air inside your home but they're washed into our water systems, which affects wildlife and other natural resources. We've developed biodegradable formulas that are safe around kids and pets."

Peppermint, lavender and rosemary essential oils grace their cleaning products for washing up, surfaces, bathrooms and floors, with refills available. The range also includes toiletries, home fragrance and more.

madekind.co.uk ▶



Brillig & Borogove[®]

Fine Interiors



Viewing By Appointment

409 Design Centre East • Chelsea Harbour • London SW10 0XF

 [brilligandborogove](https://www.instagram.com/brilligandborogove)

contact@brilligandborogove.com

[brilligandborogove.com](https://www.brilligandborogove.com)

Joyful Expression: Pukka Print x Sarah Campbell

Vibrant new 10th anniversary collaboration

Inspiration struck textile designer Sarah Campbell the moment she met Jools Cornell, founder of block-printing specialist Pukka Print. “Jools mentioned that she’d enjoyed the exhibition of the work of weaver Anni Albers at Tate Modern,” she says, “and we spoke about the possibilities of making block-printed repeating textile designs that reflected that aesthetic. The moment Jools had spoken of her interest in the Bauhaus weavers, a design had jumped into my mind’s eye, and the first thing I did when we’d agreed to make this collection was to paint it directly onto fabric.”

The result is the Sarah Campbell Designs for Pukka Print collection – a vibrant new fabric collaboration celebrating the brand’s 10th birthday, with four colour stories: Forest, Library, Bright Blue and Light Blue. Combining Sarah’s joyful approach to pattern with Pukka Print’s commitment to traditional Indian block-printing, the new collection is centred around bold geometric prints and a bright colour palette that brings a strong new aesthetic to the brand.

Sarah developed and refined a series of original artworks which gradually evolved into patterns. Hand-cut card stencils were used to echo the wooden blocks used in the final-block printing process, with paints applied by hand directly onto cloth in different colour and layout iterations until four final colour stories emerged. “Block-printing is completely new to me, so exciting, and of course influenced how the patterns might work,” she says. “But the essence – interesting design and colour that repeats and travels easily across the cloth – remains my goal.”

Jools worked with a textiles studio and workshop based just outside Delhi and began translating these patterns on to fabric. She says: “I’ve always loved the collaborative essence of block printing – meeting with the carvers, learning the techniques and witnessing the level of expertise that is required to create these fabrics entirely by hand.”

As with all of Pukka Print’s collections, the fabrics are created in small batches, entirely by hand, with no machine involvement. Printing blocks called ‘buntas’, made from sisam wood, are hand-carved with individual elements drawn from the original pattern design. Each colour used in the pattern has its own block, so the more colour and layers in the pattern, the more sophisticated and rich the result. “This special collection brings a dynamic new ‘look’ to Pukka Print,” says Jools.

Sarah adds: “I’m fascinated by pattern – what it does and how it works. This project has given us a brilliant opportunity to celebrate the confluence of so much different expertise and creativity, collaboration and co-operation across the world.”

pukkaprintlinen.com ▶

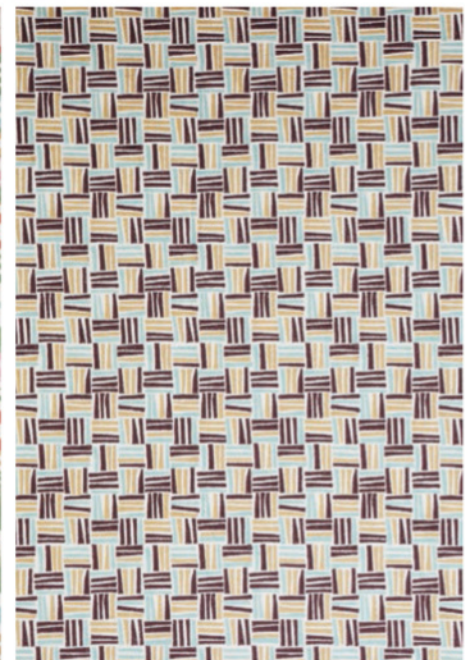


ABOVE Pukka Print founder Jools Cornell (left) with textile designer Sarah Campbell.

LEFT Each colour is carefully block-printed by hand.

BELOW LEFT Kaleidoscope is an energetic geometric design.

BELOW RIGHT Rashers in Mahogany and Duck Blue has a colourful verve.





Beautifully crafted
HAND-MADE
timber windows & doors



Whether your home is a country cottage, a Victorian semi, a modern townhouse or a converted barn, we have a range of traditional and contemporary timber windows and doors that will complement it perfectly.

Our collection has been carefully and sensitively tailored to complement the English home. Unlike timber windows of old, our products will not twist, will not rot and require very little maintenance. High levels of insulation and security ensure there is no need to sacrifice beauty for comfort.

With **50** local showrooms nationwide we can provide the perfect environment to browse the many options available.

The Timber Windows service is delivered with care by knowledgeable local specialists whose reputation is built on providing an attentive service from initial enquiry to the completion of your project.

Please do get in touch to receive expert advice and to see how beautiful timber windows and doors really can enhance the value & beauty of your home.

- | | | | | | |
|-------------------------|-----------------|------------------|-------------------------|-----------------------|-----------------|
| AMERSHAM | CATERHAM | HARROGATE | HORSHAM | NOTTINGHAM | SHREWSBURY |
| BATTERSEA (COMING SOON) | CHANNEL ISLANDS | HARTLEY WINTNEY | INGATESTONE | OLNEY | STAMFORD |
| BIRMINGHAM (HARBORNE) | CHELTENHAM | HEATHFIELD | IVYBRIDGE (COMING SOON) | OXFORD | SUNNINGDALE |
| BLANDFORD | CIRENCESTER | HENLEY-ON-THAMES | KNUTSFORD | REIGATE (COMING SOON) | ST ALBANS |
| BOURNEMOUTH | COLCHESTER | HEREFORD | LEAMINGTON SPA | RIPLEY | TEDDINGTON |
| BRISTOL (CLIFTON) | DENBIGH | HIGHGATE | LINCOLN | SAFFRON WALDEN | TUNBRIDGE WELLS |
| BURY ST EDMUNDS | DULWICH | HONITON | MAIDSTONE | SALISBURY | WINCHESTER |
| CARDIFF | ESHER | HORNDEAN | MORETON-IN-MARSH | SHEFFIELD | WOODBRIDGE |
| CARMARTHEN | GUILDFORD | | | | |



T: 0800 030 2000

www.timberwindows.com/eh





Hitting The Right Notes

New home collection by heritage fragrance house Floris

Juan Famenias Floris and his wife Elizabeth started selling perfume, combs and shaving products in the elegant quarter of St James in London in 1730. Today, the Floris shop the couple opened in Jermyn Street remains the heart of the business, which is run by their descendants, the eighth and ninth generations of the family.

The double-Royal-Warrant-holding independent heritage fragrance brand has launched a new home collection of diffusers, candles and room fragrances in five different scents. These include Hyacinth & Bluebell, which features a touch of carnation underscored by a soft balsamic and woody base, Cinnamon & Tangerine – a juicy and spicy cocktail finished with a dusting of crushed black pepper, and Oud & Cashmere, which sparkles with enveloping warmth. The other fragrances are Sandalwood & Patchouli – a lingering woody amber with a warm heart of rose and jasmine lifted by twists of orange, and

Grapefruit & Rosemary – zesty notes of grapefruit and herbal tones for a crisp, fresh and vibrant fragrance.

Floris has been producing home fragrances for over a century – its 1851 catalogue features a range entitled ‘For Perfuming Apartments’.

The original shop in Jermyn Street is a fascinating time capsule, proudly displaying its goods in the original Spanish mahogany cabinets bought from the Great Exhibition held in Hyde Park in 1851.

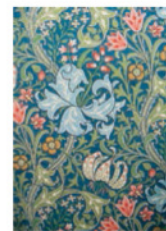
Juan Famenias Floris carefully noted the formula of every fragrance he created in a large leather-bound book which has been handed down through the generations. His notes inspire the unique fragrances created by the brand today, all of which are made and measured using the very same antique glassware used by Floris family members through the ages. florislondon.com



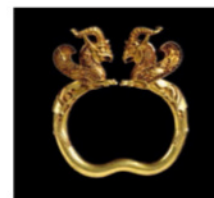
Diary



Style & Society: Dressing The Georgians is a major new exhibition revealing life in the 18th century through the fashions of the day. Until 8 October at The Queen's Gallery, Buckingham Palace. rct.uk



The William Morris Society will hold the first exhibition to focus on John Henry Dearle, Morris's apprentice and successor at Morris & Co. Until 17 Dec at Kelmscott House in Hammersmith, London. williammorrissociety.org



Precious artefacts from across the globe grace major new British Museum exhibition *Luxury & Power: Persia To Greece* including the Panagyurishte treasure from Bulgaria, last displayed in the UK in 1976. From 4 May to 12 August. britishmuseum.org



Archival Inspiration

Raj Tent Club x V&A

Intricate designs from the V&A's archives have inspired a divine new collaboration with Raj Tent Club. Adorned with two new patterns – Chinoiserie (pictured left) and Clematis – six sizes and styles of canopied tents have been painstakingly handcrafted in Rajasthan following centuries-old traditions.

Found in the V&A archive, an 18th-century wallpaper fragment painted with flowering shrubs, birds and butterflies that would once have adorned a country house bedroom inspired Chinoiserie. Clematis is a pared-back stylised flowerhead pattern based on a 19th-century printed cotton from Charles Hindley & Sons, which sold hand-printed chintzes and furniture.

Raj Tent Club co-founder Nicky Marks says: “It was such a pleasure delving into the V&A archive. We had for some time been interested in producing a chinoiserie tent and this gave us the perfect opportunity.” rajtentclub.com

INCHYRA



DESIGN DISCOVERIES

Embrace indoor and outdoor living with versatile pieces and natural designs

AHEAD OF THE CURVE

The softly curved front of this chest of drawers elevates it beyond a simple piece to a notable part of a room scheme. The oak construction and deep drawers ensure it is as beautifully functional as it is aesthetically pleasing.

Iris oak chest of drawers, £1,498, Rowen & Wren

FLORAL ABUNDANCE

Designer Hope Wyatt began her brand to celebrate nature by producing framed hand-pressed flowers and hand-painting designs for table linen. Her new Garden Bouquet range has a nostalgic, cheerful print featuring bunches of cosmos, dahlias, anemones and poppies delicately tied with pretty ribbons.

Garden Bouquet tablecloth, from £100, and napkin, £18, both By Hope



STYLISTED WALLPAPER

In keeping with Rockett St George's signature maximalist style, its co-founders, Jane and Lucy, have created a striking wallpaper collection. Inspired by timeless chinoiserie prints, the design seen here includes hand-drawn details and watercolour effects with a pearlescent finish. *Modern Chinoiserie Watermelon Blush wallpaper, £125 a roll, Rockett St George*



SHOPPING

ALL LINED UP

The Eccentric range of fabrics by Moon pays homage to the traditional British style of mixing soft furnishings in quirky prints and varying colourways. Combining stripes, geometrics, checks and plains in the same scheme is simplified as the whole collection works in harmony.

Wilde, Evergreen fabric from around £80 a metre depending on stockist, Eccentric range, Moon ▶



SCULPTURAL APPEAL

Adding an elegant metal structure such as this filigree panel to a garden draws the eye without seeming out of place. The design could create a screen around planting (useful for interest before plants are established) or add engaging detail in front of a garden wall or fence.

Filigree Leaf outdoor panel, £85, Cox & Cox



SATURATED FABRICS

Evoked the mood of exotic Indian summers by juxtaposing fabrics in contrasting colours. In this bedroom, a similar depth of tonality in each print ensures cohesion, with bold trims and edging in red adding definition.

Cushions (from back) in Lulu Dandelion, Lulu Midsummer and Naya Infinity, from £75 each; headboard by The Headboard Workshop, from £479, in Naya Rouge On White, £70 a metre; curtain in Ikat Infinity, £70 a metre; lampshade in Lulu Meadow, £70 a metre; hand-stencilled backdrop in Lulu (exact design of wallpaper not for sale but any design can be rescaled or redesigned), all Julia Brendel

LIGHT UP THE NIGHT

Extend time spent enjoying the garden on a summer's evening with well-positioned outdoor lights. Pooky's new range includes wall lights, lanterns, spotlights and recessed lights which are all weatherproof, IP44-rated and hardwearing. *St Ives IP44 wall light, £250, Pooky* ▶

Freshly picked *Luxury* south Devon holiday homes



FINESTSTAYS
LUXURY HOLIDAY HOMES

☎ 01548 706 706
✉ hello@fineststays.com
🌐 www.fineststays.com



Scan to book



OUTDOOR FABRICATION

Those with a passion for William Morris's original designs will be delighted to learn Morris & Co has launched a collection of 25 outdoor fabrics. For versatility, the prints can be used inside and outside. To measure up to the demands of a busy summer, the fabric is UV- and water-resistant, anti-microbial and has a colourfast wipeable finish.

Outdoor performance fabric collection, £115 a metre, Morris & Co

CLASSICALLY LIT

Inspired by antique Chinese porcelain ginger jars, the Fawkes (*below*) and Devana ceramic table lamps are hand-thrown and hand-painted. The designs feature flora and fauna depicted in a traditional blue-and-white chinoiserie style. Each lamp comes as a base only, allowing for a bespoke shade to be added, or as a whole with a classic ivory pleated shade to complement the design.

Fawkes table lamp, £330 (base only), £378 (complete with ivory shade); bespoke pleated shade, from £177, all David Hunt Lighting



GLOBALLY INSPIRED PRINTS

Schumacher's collaboration with Dutch fashion-designer-turned-interior-designer Marie-Anne Oudejans unites exotic florals and simple Dutch designs in a vibrant wallpaper and textile edit.

The Royal Poppy panels, seen here, are two-panel wallpaper sets that can be configured to create a showstopping backdrop. The Poppy fabric (on the chair) offers a contrasting small-scale floral print with a wide eye-catching stripe.

Royal Poppy panel A, £750, Royal Poppy panel B, £450, Royal Poppy fabric, £198 a metre, Schumacher ■





PLUCK

MODERN KITCHEN FURNITURE

88A Acre Lane, London, SW2 5QN 020 7095 1795 pluck.co.uk

SHOPPING



Flores Carver Chair, Plum Red, upholstered in Croquet, Linwood, £645, Charles Orchard

Bamboo square cushion, from £52.50, Birdie Fortescue



Oscar Bamboo canopy bed, £POA, Paolo Moschino



Border in Bamboo BP2139 wallpaper, £120 a roll, Farrow & Ball

Abbott floor lamp, £1,416, Arteriors x Celerie Kemble



Natural Bamboo Serving Set, £86, Nina Campbell

STRENGTH & BEAUTY

A strong, sustainable material, bamboo also inspires designs emulating its knobby canes and delicate leaves



ChiChi mirror in antiqued gold, £280, Pooky



Avery Bamboo napkin ring, £80 for four, Blue Pheasant at Amara



Grove Bamboo cabinet handle, from £127.20, Armac Martin



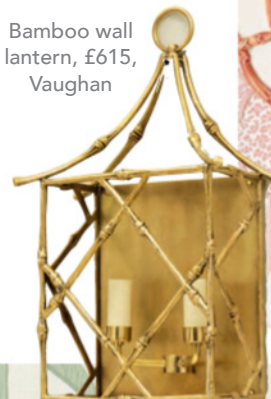
Bambusa Velvet Bottoman, Azure, £895, House of Hackney



Tine K Bamboo outdoor sofa, £975, Idyll Home

Bamboo Trellis tape, £78 a metre, Schumacher

Bamboo wall lantern, £615, Vaughan



Pink Petal Bamboo plates, from £40 each, Mrs Alice

FRENCH BEDROOM

— Est. 2006 —



The Windsor Garden Bed

Find us at The Chelsea Flower Show May 2023.

Scan for the full VIP experience.

www.frenchbedroom.co.uk



SHOPPING

Morris & Co large tray with handles, £14.40, Spode



Rive Droite bistro table in Clay, £30, Garden Trading



Peacock Feather tray, £100, Matthew Williamson x Les Ottomans

Madrid rectangular tray, £85, Jonathan Adler



Rattan trays, £72 for a set of two, Joanna Wood

Il Viaggio di Nettuno change tray, £113, Luke Edward Hall for Ginori

TRAY CHIC

Elevate the everyday with pieces combining eye-catching designs and desirable shapes with practicality



Printed cotton tray, £35, Cutter Brooks

Whitewashed Rattan Breakfast-in-Bed tray, £100, The White Company



Wave Edge tray, Malachite, £160, Pentreath & Hall

Palmero tray table (also seen as page background), £170, Sweetpea & Willow



Camellia tea tray, £185, Fortnum & Mason



Oval tray, £575, The Lacquer Company

Open Weave Bamboo and Rattan tray, £50, Layered Lounge



Border in Mood Queen Cobra, Powder £245 a linear metre (90cm wide), Arte

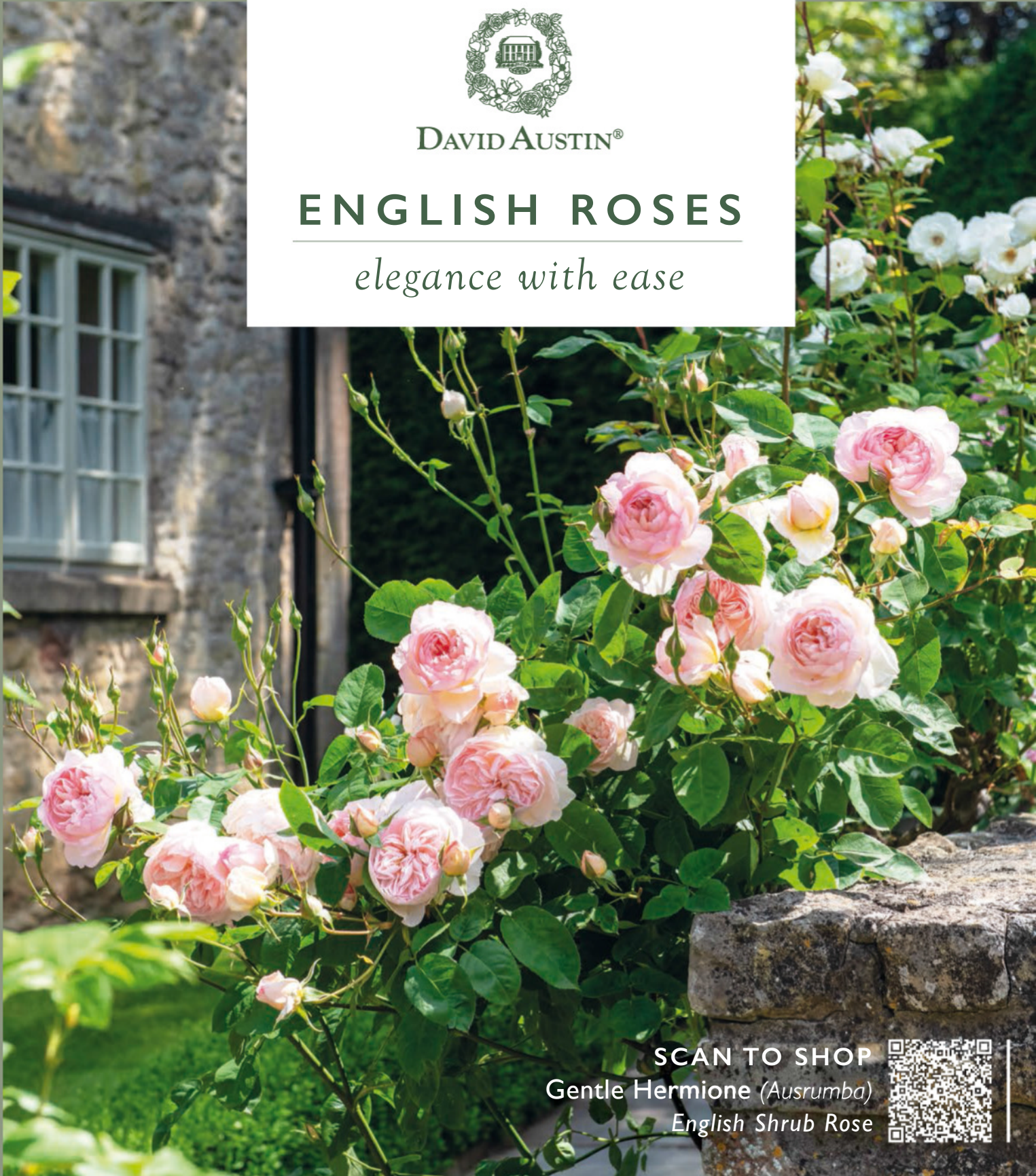
FEATURE SUZANNA LE GROVE



DAVID AUSTIN®

ENGLISH ROSES

elegance with ease



SCAN TO SHOP
Gentle Hermione (*Ausrumba*)
English Shrub Rose



FLOWERS ALL SUMMER LONG | EASY TO CARE FOR | THRIVES FOR MANY YEARS

With minimal effort English Roses will transform your garden with their immense beauty and powerful fragrances, year after year.

davidaustrinroses.co.uk    



BRITISH MADE QUALITY AND CRAFTSMANSHIP

Artisan blacksmiths making lamps,
chandeliers, curtain poles, mirrors,
fire irons and more for discerning homes.

www.nigeltyas.co.uk



NIGEL·TYAS
IRONWORK



THE EDIT

Editor-at-Large Kate Freud shares the new products and brand discoveries that have caught her eye this month

SITTING PRETTY

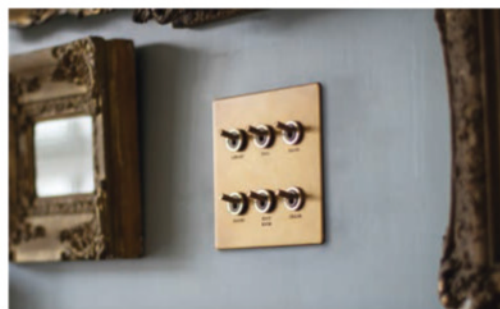
The Dining Chair Company – known for its beautiful British-made handcrafted furniture – not only creates stylish tables, stools and benches to sit alongside its upholstered dining chairs, but is now adding an extra touch of decadence to the home. Its new collection of upholstered desk chairs combines design and comfort, in an array of bespoke fabric choices, guaranteed to make the home office just as chic as the rest of the interiors. (See our feature on p98 to find out more.) diningchair.co.uk



ENGLISH CHARM

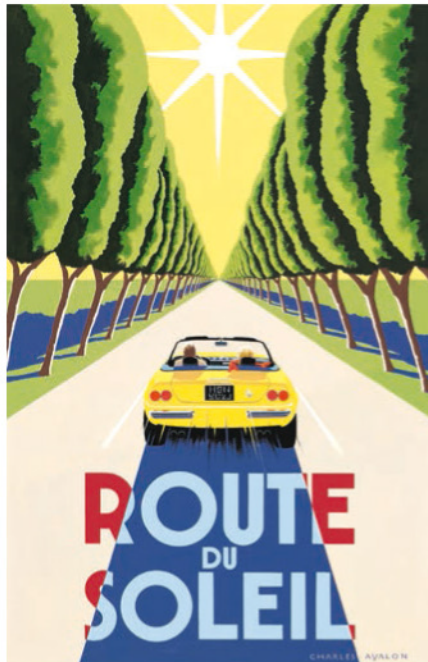


Launched in 2021, interiors brand Brillig & Borogove perfectly blends fine and decorative art and antiques creating an Aladdin's cave of treasures to be found. From period furniture and textiles to objects of vertu and collectables, there is everything from the splendour of the Regency era to the romance of art nouveau, all cherry-picked for a classic interiors scheme. There is also a collection of wall coverings, all digitally printed in the UK. Featuring everything from bold floral prints to hand-drawn anthropomorphic characters, reflecting the aesthetics and charm of the English country house style, they provide the perfect backdrop for Brillig & Borogove's beautiful finds. brilligandborogove.com



LIGHT UP

The Soho Lighting Company has been creating chic sockets, switches and lighting since its launch in 2017, capturing the imagination of interiors aficionados with its unique designs. New to its collections for 2023 is the timeless Langdon Lantern pendant, ideal for country homes or larger city residences, and its brilliant toggle dimmer switches, designed to make bulky dimmer knobs a thing of the past. With a blend of stylish finishes available, they are like a design feature in themselves. soholighting.com ▶



PRINT PERFECTION

It is hard not to spot a Pullman Editions poster a mile off – they are known for their strikingly original designs in the art deco style. The company has been designing, commissioning and publishing these prints for decades, capturing everything from glamorous global destinations to historic automobiles in strictly limited editions of 280, which adds to their collector's appeal. The latest addition to the range is glamorous *Basil's Bar*, commissioned by the island of Mustique. (See our feature on p98 to find out more.) pullmaneditions.com



BIDDING FOR GLORY

As one of the UK's leading regional auction houses since the late 18th century, Sworders has established a name as one of the go-to places to buy everything from antique furniture to fine jewellery. Specialising in fine art and antiques from across the ages, it offers a broad calendar of sales, providing something of interest to suit all collecting habits and interior design styles. Plus it has a team of experts on hand to give advice, making buying at auction easy. sworders.co.uk

6 OF THE BEST GLASSES



1



2



3



4



5



6

1 Memento drinking glass, £8.95, treaclegeorge.com

2 Murano round tumbler, £24, maisonflaneur.com

3 Bobble textured water glass, £13, fab-home.co.uk

4 Swirl Stripe glass tumbler, £9, johnlewis.com

5 Royal Scot Crystal Highland large barrel tumbler, £70, jamespirie.com

6 Ferm Living Oli water glass, low, £15, beut.co.uk

SAVE UP TO 50% WHEN YOU SUBSCRIBE



Celebrating the essence of English style

AMAZING SAVINGS
WHEN YOU SUBSCRIBE

UK £34.95 + Free Delivery,
saving 50% (£35)

Europe €79.95 Australia \$149.95

Rest of World £74.95

*“I love The English Home –
it’s a mustread for myself
and our team”*

NINA CAMPBELL, LEADING INTERIOR &
LUXURY HOMEWARE DESIGNER

SUBSCRIBE NOW

Go to www.chelseamagazines.com/CENH232

Or phone +44 (0)1858 438 889 (quoting code **CENH232**)

NB: Prices and discounts based on the UK BAR rate of £70. If for any reason you're not happy with your subscription, you may cancel within 14 days of placing your order.



Made for
THE MANOR

For the new owners of this elegant Devon manor house, putting down roots in the county where they first met feels like coming full circle

FEATURE SHARON PARSONS
PHOTOGRAPHY RICHARD GADSBY

Garden furniture has been arranged at various points on the terraces and gardens so that the vistas can be appreciated from every vantage point. The large Conisborough table on the terrace is from Oka, with Cayton chairs from Garden Trading.





‘A lot of grand houses can seem cold and echoey, but this was warm and welcoming’

ABOVE The Neptune kitchen was already in situ, with cabinetry finished in the company’s Dove Grey. The island has been repainted using Little Greene’s Pleat to tie in with the adjoining boot room’s colour scheme.

LEFT Sally in the boot room, which has a hard-wearing limestone floor and plenty of storage for wellies and other country life necessities. Harberton Manor is available to hire through boutique-retreats.co.uk

Fate has a funny way of tugging us to a place we are meant to be, even if it sometimes takes its time. For Sally and Michael Westcott, there has long been a sense of serendipity at play. “We’re both originally from Devon, and actually knew each other as children – I’d often visit Michael’s family home and we’d play tennis together,” Sally says. However, life was to take them in very different directions and it would be over 30 years later before they met again, one warm midsummer’s evening: “We stayed up talking all night and by the time the sun came up, I think we both knew it was meant to be: a year later, we were married.”

The couple settled happily in Sally’s Bristol home, along with her two children Jemima and Ned (now 20 and 18), yet they both felt the pull of their home county. “We missed the rolling hills and, of course, the sea,” Sally explains. “We loved the idea of coming full circle and finding our ‘forever’ home back where it all started.” However, their working lives and other commitments meant that the new property would not ▶



Walls painted in Salix by Little Greene provide a gentle backdrop to the teal and powder blue tones in the snug. A sofa in Velvet Green from Sofa.com is teamed with an ottoman by David McNulty upholstered in Macy in Teal and an armchair reupholstered by Buttonbacks in Truro using Fontane in Teal. Both fabrics are by Colefax and Fowler. The carved mirror is from Holly Keeling Interiors.

The drawing room is a masterclass in how best to marry different design styles, from classic to contemporary, with confidence. The coffee table and rug, both from Oka, centre the scheme, while the raspberry sofa from Sofa.com in Dusty Rose house velvet adds vibrant colour.





be their full-time home for a while, though that was the long-term plan, so location was important. “It had to be somewhere within easy reach of major roads and train stations,” says Sally. “We also wanted it to have plenty of space for family and guests to stay, along with an outdoor swimming pool and a tennis court. And I was adamant it should have a south-facing garden so that the sunshine could be enjoyed all day long.”

Armed with such a specific wish list, the couple looked in vain for almost two years. Then, one drizzly weekend in November 2020, they drove down a quiet lane in a hamlet close to Totnes and found themselves at a pair of tall wrought-iron gates, beyond which stood the elegant Harberton Manor. “The moment we walked in, it just felt right,” Sally recalls.

The house’s origins date back to the 17th century, and it appears in the official copy of the *Terrier of Harberton* dated 1680 (a ‘terrier’ is a medieval term for the register of a landowners’ property). Some 100 years later, it was extensively remodelled to reflect the elegant Georgian architecture of the time, including the principal reception rooms with their impressive full-length windows overlooking the gardens. As time has passed, the manor has also served as the rectory to the local church, as well as a school. “I even found some old keys with labels such as ‘biology lab’, ‘maths room’ and ‘luggage attic,’” says Sally. “It’s been fascinating to slowly discover its secrets.”

While the house and much of the decor were in excellent condition, the couple were keen to put their stamp on it. Sally knew exactly who could help. “A few years ago, I’d come across the work of interior

ABOVE The relaxed breakfast room, which sits between the snug and the kitchen, is perfect for lazy mornings with coffee and the papers. The table was found at Exe Brocante in Exeter, and Holly sourced the chairs from a French online auction site. The faux dahlias are from Neptune.

RIGHT This sparkling empire chandelier was discovered on an online auction site, and creates a striking focal point on the landing.





'The house has the most wonderful ambience and character – everyone who stays here seems to fall in love with it'

ABOVE The principal bedroom is a haven of calm and light with chalky Chateau wallpaper in Gesso by Lewis & Wood, while the antique four-poster bed has been whitewashed with diluted paint to give it a softer finish. Holly likes to play with scale and has chosen extra-tall lamp bases from One.World, paired with Pooky lampshades, to comfortably balance the four-poster bed.

designer Holly Keeling in a magazine, and as soon as I discovered she was based in Devon, with a shop in Totnes, I mentally filed her details for future reference," she says. "I've never worked with an interior designer before, but I knew she'd be perfect as soon as we met – which was on the day we moved in – and discussed ideas."

Holly's signature style blends classic furnishings with pieces sourced from far-flung spots around the world and she is adept at unearthing treasures from antique markets and vintage stores, but often looks to the high street and online, too. "You don't have to spend a lot of money to achieve a fantastic result," she says, "and there's nothing wrong with combining quality furnishings with other pieces if you get the finish you're after."

Together, Sally and Holly carefully assessed what was required. "The kitchen and bathrooms had good quality fittings and could be revitalised with new blinds and finishing touches," Sally says. "Similarly, I couldn't justify replacing the wallpapers in many of the rooms, or some of the curtains and carpets."

Despite all the plans and ideas that were almost immediately bubbling away, patience was called for: "We were starting from scratch as far as furnishing the house was concerned, and I hadn't factored in the knock-on effects of the pandemic and the resulting delivery delays," Sally admits. That, combined with a lack of available tradespeople and a shortage of materials meant that three months later, they had not made much progress. "We had a makeshift staycation that summer with camping chairs in the snug and mattresses on the floor," Sally laughs. "It was chaos."

Eventually the rooms began to take shape, with Sally travelling from Bristol once a week to check on progress and Holly constantly hands on. The result is a mix of elegant, unique and comfortable furnishings, beautiful artwork, and soft, cohesive colour schemes.

The last 18 months have been transformative, not only in giving this remarkable property a new lease of life, but for Sally and Michael too, as they begin this rewarding new chapter together. "To live in this historic house and do our bit to look after it is a privilege," she says. "I think it was meant to be." ■

design centre
LONDON

YOU ARE INVITED TO WOW!
SUMMER 2023, LONDON

WOW!house

WHERE AMAZING DESIGN HAPPENS
Design Centre Chelsea Harbour

MONDAY 5 JUNE - THURSDAY 6 JULY 2023

18 WORLD-CLASS INTERIOR DESIGNERS



INFINITE INSPIRATION



18 ROOMS AND OUTDOOR SPACES



ONE AMAZING SHOWHOUSE



Design Centre, Chelsea Harbour, London SW10 0XE

A portion of ticket sales will be donated to TP Caring Spaces
"filling charitable spaces with great design"

DISCOVER MORE AND BOOK NOW AT [DCCH.CO.UK](https://dcch.co.uk)




The mesmerising view is framed by floor-to-ceiling windows with specialist UV-reducing glazing imported from a Belgian company. Keen to repurpose furniture from her previous home, Olivia decided to keep the dining table's legs and commission a new top for it. The chairs are from William Yeoward.



ALL IS *QUIET*

Enchanted by the panoramic views and peaceful, rural location, Olivia Shaw has creatively transformed a 19th-century find into an elegant, timeless family home

FEATURE & STYLING JANET MCMEEKIN
PHOTOGRAPHY RACHAEL SMITH



Little Greene's Portland Stone Mid on the walls provides the perfect backdrop to the nautical painting by Tina Stokes. A small button-back sofa and a side table create a cosy seating area in this sunny corner. ▶



‘When we step outside, we walk straight into the heart of the countryside’

ABOVE Tremendous attention to detail went into the project, including creating recessed shelves either side of the electric Aga.

LEFT Olivia sits beneath a vintage oil painting by Nils Forsberg fils from Etalage. To see more of her interior design work, visit oliviashawinteriors.com

From the moment Olivia and Chris Shaw spotted their new home, a brick-and-flint property in the heart of rural Wiltshire, they were absolutely enthralled by its setting and the spectacular view that reminded them of their roots. “As I am originally from Norfolk and my husband is from Devon, the combination of the expansive, breathtaking outlook over fields towards ‘big skies’ at one side, and a beautiful wooded valley on the other, instantly resonated with both of us,” says Olivia. “Having viewed around 20 houses without success, we felt this was the one, and that with vision, time and patience, we could totally transform it into a wonderful home for our family.”

Back in 2017, Olivia, of Olivia Shaw Interiors, and Chris, who is a chartered surveyor in commercial property, were settled in London with their sons, ▶



ABOVE The kitchen is decorated in muted tones to not detract from the view outside. A punch of colour is added in the form of the maroon bar stools from Normann Copenhagen. The tumbled-edge limestone flooring was sourced from Stone Age in Parsons Green.



LEFT To complement the windows, Olivia chose Little Greene's Normandy Grey for the front door.



ABOVE The Roman blind and curtains (opposite) in the drawing room are in Florence Rose Eau by Fleurons d'Hélène and came from the couple's London home. The landscape painting by Scottish artist Sarah Carrington is often a talking point in this space. The ottoman is upholstered in a Fermoie fabric.

RIGHT Olivia's study, located just off the orangery, doubles up as a cosy snug for the family. The cushions are made up in fabrics from Fermoie, Abbeville Designs and Bennison Fabrics and the rug is from Safavieh.





‘The all-encompassing view informed the palette, particularly downstairs where natural, muted tones create fresh spaces with a relaxed feel’

Wilbur, now eight, and Rufus, now five. However, on September 15 of that year, their lives changed dramatically. “Minutes after I had dropped Wilbur to his nursery, it was cordoned off and police were everywhere,” Olivia recalls. “I discovered to my horror that a bomb had exploded on a train at Parsons Green, injuring dozens of people. Wilbur was stuck inside the nursery and I was unable to reach him. It was all incredibly shocking and distressing. That night, Chris and I made the decision to relocate to give our children the safe, rural upbringing we had both enjoyed.”

Following in the footsteps of her business colleague, Betty Bettinson, Olivia enlisted property search agents Heaton & Partners to help find their new house. “Even though our area included four counties within commutable distance of the City for Chris’s work, there were slim pickings, particularly since one of my priorities was a period house with no road noise.”

In the spring of 2018, the couple’s agent, Edward Heaton, told them he had found a property in Wiltshire that, although smaller than anticipated, had vast potential. “Despite viewing it on a terrible day with driving rain and howling winds, I had a really good feeling about this house and how we could put our stamp on it,” Olivia explains. “Thankfully, Chris shared my enthusiasm.”

Within four whirlwind days of making an offer the pair had exchanged contracts. By this stage, they had sold their London home and moved in with Olivia’s parents. Upon completing on the house seven months later, they wisely decided to wait before making any radical changes. They wanted to familiarise themselves with the property and consider how best to blend the existing building with its later additions, including a conservatory built in 1999. “We’re not exactly sure when our house dates from, but it appears on a map in ▶

ABOVE A bold flamingo print from King & McGaw lends a contemporary twist to the drawing room, which is located in the original part of the house. Olivia has given this space a more traditional, feel, using a richer, slightly darker palette. The walls are painted in Little Greene’s Portland Stone Deep.



‘Sustainability and longevity are important to me, and I’m a firm believer in buying pieces that you won’t tire of rather than following trends’

ABOVE Olivia felt the photograph by Tim Hall, that had been in the couple’s sitting room in London, would work perfectly in their en-suite bathroom. The floor tiles are from Domus Tiles and the walls and bath panel are painted in in Farrow & Ball’s Light Blue.

1860 as ‘The Old Shop’,” says Olivia. It is believed that the property would once have been a handy stop for provisions for people walking The Ridgeway and Olivia was enchanted to discover a little bread oven in what has now become the drawing room.

While deliberating about how to reconfigure the spaces and extend sympathetically, Olivia was introduced to Simon Johnson, an architect whose creativity, design aesthetic and vision was aligned with her own. “Simon’s eye for detail was phenomenal,” she says. “He totally understood my desire to create a house that flowed seamlessly from old to new without being jarring or feeling disjointed.”

Plans were formulated to remove the 1990s conservatory and build an airy orangery with a large roof lantern and floor-to-ceiling steel-framed windows and doors to maximise the view, reconfigure the layout of several rooms, fit a new kitchen and bathrooms, and update the electrics and plumbing before redecorating

throughout. With planning permission granted, and a team of local builders and craftsmen due to start in March 2020, the Covid pandemic outbreak meant the project went on hold until that autumn.

In regard to the interiors, Olivia’s impeccable eye for design and experience stood her in extremely good stead. “The all-encompassing view informed the palette, particularly downstairs, where I chose natural, muted tones to create fresh spaces with a relaxed feel,” she says. “Anything too bright or bold would definitely have competed with the focal-point landscape.”

Olivia has selected the colours and accents to create plenty of interest without anything being too overpowering and chosen finishes that reference the original architecture and period features. She was keen, too, to use fabrics, furniture and soft furnishings that would not only work with existing pieces and much-loved artwork, but also stand the test of time. “I wanted our new home to be full of the treasures that we’ve ▶

RIGHT A treasured nursing chair that once belonged to Olivia's mother is another personal addition in this sun-drenched corner of the principal bedroom. It has been upholstered in a Fermoie fabric. Rosanna Lonsdale sells similar cushions.

BELOW The couple's spacious bedroom, where Penny Morrison's Flower Berry wallpaper steals the show. The bedhead and valance have been upholstered in Zanzibar fabric in Ocean by Peter Dunham Textiles. The Pink Ditsy Ruffle quilt is by Sarah K.





collected over the years since that's what I feel gives a home soul and integrity," she says. "Sustainability and longevity are very important to me and I'm a firm believer in buying pieces that I won't tire of, rather than following trends. A lot of the fabrics from our London home have been tweaked and appear in different guises here, which gives that feeling of history and depth."

Since moving in during April 2021, Olivia, Chris and their boys have been embracing their new rural lifestyle and fit-for-purpose home. "Streamlining the house and adding the orangery has given it a completely new lease of life," Olivia says. "The reconfiguration works incredibly well for our family, and the boys are delighted that they now have a separate playroom, as well as a large garden and acres of land to explore."

"We love the view and the added bonus of the huge roof lantern is not just the quality of light during the day, but also the starry skies at night. These days, when we step outside, we walk straight into the heart of the countryside and the best bit is that there's absolutely no road noise. It's an idyllic, tranquil corner of the world that we adore." ■

ABOVE Deciding to work with the curtains and a wardrobe left by the previous owners, Olivia refreshed this space in Ball Green by Farrow & Ball.

RIGHT Having admired this Gallier Diamond wallpaper by Brunschwig & Fils for many years, Olivia felt it would be a striking addition in the cloakroom.



JOYOUS NEEDLEPOINT

Needlepoint kits from Ehrman Tapestry



BADGER
15"x 15"
£65 now £52

Suzanne Gyseman's whimsical animals are stitched with a light touch. Charming and humorous they work equally well as pictures or cushions and are good projects for beginners.

The kits come complete with everything you need: a printed colour canvas, a needle, instruction booklet, all the 100% pure new wool and a colour chart as an additional guide if needed.



OWL
15"x 15"
£65 now £52



RED FOX
15"x 15"
£65 now £52



STAG
16"x 16"
£70 now £55

Order Online at www.ehrmantapestry.com

Telephone order line: 01226 733366

Ehrman
TAPESTRY



A keen cook, Sarah selected British Standard kitchen cupboards by Plain English. The striking marble surfaces and large island have surpassed her vision. "I wanted a traditional design that would be classic, and I would never get bored of," she explains.



SECRETS WITHIN

A Somerset mansion is brought back to life with surprisingly playful details and eclectic interiors designed to create a warm welcome in this enchanting family home

FEATURE SUZANNA LE GROVE PHOTOGRAPHY RACHAEL SMITH



The laundry room, painted in Scullery Yellow by deVOL, has an uplifting mood. "I've got three young boys and I spend a lot of time doing washing, so I really wanted this area to be somewhere that makes me smile as I walk into the room," says Sarah.



‘It has exactly the kind of slightly perfectly imperfect look that I was going for’

When Sarah Southwell requested a viewing of a Somerset manor that needed updating, her estate agent was adamant in his response, “You’re not going to want to see this, it needs so much work; it needs a whole new heating system, rewiring and replastering.” Sarah was steadfast in her reply. “I said, ‘No, no, I really do!’,” she laughs at the recollection. Built in 1650 and Grade II listed, the manor is situated on the Somerset levels, which are characterised by wetland areas and gentle hills. Having been in the same family for generations, the property was last altered in the 1950s and needed significant restoration. Despite this, it met the criteria of Sarah and her husband, who both wanted to move out of London and find a special family home for their three boys, aged three, five and six, and their Labrador, Dino. “The main criteria were lots of space and a project to get my teeth into.” After looking at several period ▶

ABOVE LEFT Sarah is an interior designer with a passion for English country house style. Visit sarahsouthwell.com to see more of her work. **ABOVE RIGHT** The hall’s original flooring is complemented by an inherited antique console. The family’s Labrador, Dino, looks on from the conservatory. **RIGHT** Originally the manor house for the whole area, the property was a working farm at one point in its history.





ABOVE The drawing room, next to the playroom with a Transylvanian dresser sourced online by Sarah, is a smart-yet-comfortable adult space. The antique seat is an online find that has been reupholstered in Robert Kime's Tynemouth Ticking. **LEFT** Sarah cleverly created a bar area out of a previously hidden large cupboard space. Mr Men wallpaper and fabric from Howe at 36 Bourne Street add a pretty touch to this functional space.

properties, the couple fell in love with the manor, which was also near family and in an area where Sarah wanted to develop her business.

"I think we'd decided before we'd even gone in that this was what we wanted," muses Sarah as she recalls parking outside. The Southwells moved into the house in 2021, and, with the rooms so cold "it was like camping", the family lived in the 21-room manor for six months before work began. In hindsight, Sarah feels this was key to working out the best layout. "I'd be sitting watching television and suddenly think, 'Oh, actually, I know what we need to do in here'." Installing heating was a priority, followed by creating a home studio, new bathrooms and bedrooms, and working around the house room by room. "Within three months, it was suddenly like a building site everywhere, which was pretty stressful."

Sarah equates renovating an old house to peeling back an onion's layers, where you keep discovering something else. This was definitely the case when in the process of taking off some 1980s anaglypta wallpaper, the plaster began coming off the walls. "I remember being in bed one night and there were ▶

The copper fender, upholstered with Florentine Flowers by Beata Heuman, was sourced from an online auction site to match the original Arts and Crafts copper fire insert. A pair of antique chairs and wall lights make this characterful fireplace in the snug into a cosy reading nook.





Each scheme started with inherited or antique furnishings so that the house feels like it has 'always been like this but just updated'

chunks of plaster falling on my head," she laughs. "It was pretty dire at times, but it was also amazing. The children seemed to love it; it was like a big adventure for them." Even with the challenge of the house getting colder as old fireplaces were replaced, and with a lack of running water and dust everywhere, Sarah remained positive. "I was thinking all of this is going to be worth it in the end and how magical the house would be for the boys."

When it came to designing the rooms, Sarah tested out imaginative ideas such as crafting a drinks bar from a disused cupboard and making a secret door in a bathroom that opens with a towel rail. "I had to convince my husband that it would be great, but now he loves it. Things like that are what make it special. There's no space in the house I didn't use in some way," she says. At times the builders, too, would take some convincing to understand her vision: "They'd say, 'You want to do what?', but afterwards they would get it."

The relaxed style of the interiors balances traditional and colourful elements with unexpected twists. "I like little quirky touches that make it a bit different." Much of the manor's interior decor is laced with bright colours, while simple limewashed walls create an ideal backdrop for the Mediterranean-style schemes seen in several of the rooms. "One of the best things to use on that kind of plaster is limewash paint, which luckily had exactly the kind of look that I was going for – that slightly perfectly imperfect look."

A frequent visitor to Shepton Mallet Antiques Fair, Sarah loves to layer antiques and revitalise older furnishings. "In the playroom, there are some amazing painted Transylvanian dressers I found online and there are vintage French beds in the children's room." Each scheme started with inherited or antique furnishings so that the house feels like it has "always been like this but just updated". Sarah also worked with the old manor's quirks – using wave-shape tiles to offset an uneven utility room floor and painting a conspicuous conservatory in matt black to avoid ▶

LEFT A crimson-edged Alternative Flooring runner adds a jolly note on the stairs.

ABOVE RIGHT The boys' bedroom has a circus theme with stripes painted in Farrow & Ball's Babouche

and Rectory Red radiating out across the ceiling.

RIGHT A Mediterranean mood is created here with Bert & May wall tiles, a marble basin from Lusso Stone and a mirror from Wallis Antiques.





extending. “I thought what’s the worst that can happen? Luckily, it looks amazing.”

Despite the estate agent’s initial warnings, Sarah feels grateful to have had the opportunity to renovate the manor. “The kitchen has been life-changing,” she says. “There are little things which I put in, such as a deVOL boiling water tap. I love how it looks and, in terms of lifestyle, it has changed my life.” Yet, it is the boys’ quality of life that Sarah measures as the true success of the project, especially as she was keen to “grab the moment” before they grow up. “One of the main things I really wanted was for the boys to feel like it was quite a magical place. When I look around, a lot of it was done for them; I hope they know how lucky they are,” she adds, smiling. ■

ABOVE In the principal bedroom, pretty prints add vibrancy. The striped cushions and lampshades are by Alice Palmer, while the other cushions are by Molly Mahon and the Roman blind fabric is Emma Blizzard by Charlotte Gaisford.

RIGHT Sarah refreshed the existing wardrobes in the principal bedroom with wallpaper by Tess Newall. Placing the Indian door from Shepton Mallet Antiques Fair on a sliding mechanism leaves plenty of space for a bath from Witt & Berg.



Tom Raffield

Making sustainable living beautiful



Artisan homeware handcrafted in England.

www.tomraffield.com

CALL OF THE SEA

Tom O'Shea has reinvigorated his former childhood home for its next chapter as a much-loved coastal retreat to enjoy with his own family

FEATURE KERRY HARPER-CUSS
PHOTOGRAPHY RACHAEL SMITH





The built-in banquette with drawers for additional storage beneath is upholstered in Lost and Found by Kit Kemp for Christopher Farr. Hutley & Humm sourced the dining table from Sussex Antiques and also encouraged Tom to have the inherited dining chairs sprayed a fabulous high gloss finish in Radicchio from Farrow & Ball. Wood flooring throughout is from Trunk.

Removing the solid wall under the stairs has allowed a neat cocktail bar, complete with fridge and wine bottle storage, to be built within the recess. Painted in Gamboge by Paint & Paper Library, it gives the room an instant hit of joyful colour.





‘This is a place that really makes us smile; it gets a “wow” from everyone who visits’

ABOVE Arabescato marble worktops and splashbacks supplied through Luxmoore & Co are combined with cabinetry painted in Invisible Green by Edward Bulmer Natural Paint, handles from Armac Martin and wall lights from Holloways of Ludlow.

RIGHT Bespoke storage for tableware and glasses has been neatly created to specification by Luxmoore & Co.

It is hard to put a finger on exactly what makes a house feel like home. Rooms that embrace everyone with comfort are essential, but when the very walls of the house seem soaked in happy memories, a feeling of welcome and connection resonates at a core level.

For Tom O’Shea, this fisherman’s cottage on the Devonshire coast could not be truer to this ideal. As his former childhood home, it echoes with youthful adventures of rolling out of bed to go to the beach and chattering around a bustling kitchen table surrounded by family and friends. Today, he relishes spending weekends here with his wife Louisa and their three teenage daughters – Eleni, Sophia and Marina – revisiting his alter ego in contrast to his cosmopolitan London life.

The couple bought the three-storey property from Tom’s parents in 2019. The elder O’Sheas had moved to another house in the village and no longer wanted





ABOVE Hutley & Humm designed the elegantly proportioned fire surround and the ingenious bi-fold doors above, made from framed, hinged botanical art to hide the television. The bobbin chairs are upholstered in Opio from Pierre Frey. LEFT The house's soft pink and green exterior lends a tantalising foretaste of its smart interior.

to run a holiday let. "Mum and Dad were umming-and-aahing about selling this, and when I realised, we immediately offered to buy it," says Tom, adding: "It was sweet that lots of locals said how delighted they were that it would stay in the family."

He and Louisa wanted a retreat that was relaxed and homely but that also felt special and did not sacrifice the comforts of their city home. "Holiday cottages can sometimes feel a little unremarkable or lack a sense of permanence," says Tom. "We wanted somewhere that would draw us with a sense of excitement down the motorway."

His parents gave their full blessing for the house to be extensively remodelled and took pleasure in watching the progress. "We were concerned that they might find it difficult, but Dad said, 'No - the house needs gutting; keep the memories but give it a complete overhaul,'" Tom recalls.

Having previously appointed Hutley & Humm to



design their London home, Tom and Louisa confidently returned to Melissa Hutley and Charlie Humm to manage the project. The designers started by deploying a multitude of thoughtful spatial changes. Although the front door already opened directly into the sitting room, the revised ground floor feels markedly different. An arched opening between sitting and dining areas was knocked through, and the solid wall which enclosed the staircase was also removed. This gained valuable space, made the ground floor almost completely open plan and allowed for a built-in cocktail bar under the stairs.

“The original kitchen had the feel of a lean-to conservatory, with PVC windows forming an angled back wall,” Melissa says. “We replaced it with a Crittall window extension, repositioned the doors and straightened the exterior line, making it more balanced, practical and bright.”

On the first floor, another wall and a door were

repositioned to improve the layout which now offers a guest bedroom, bathroom and ingenious bunk room with four full-sized single beds. Each bunk is beautifully appointed, with its own light, wall sockets and phone charging ports, while under-bed drawers and a central wardrobe provide ample storage.

The principal bedroom on the top floor is a calm haven with open views to the beach. “It was probably the trickiest space to work with because of the eaves,” says Melissa, “but by projecting the roofline at the back we were able to create a spacious en-suite bathroom with a walk-in shower and to ensure the height in front of a vanity and above the loo weren’t compromised.” They also installed two Velux balcony windows that cleverly have a bottom half that unfolds outwards to offer balconies to the front.

Tom and Louisa originally leaned towards crisp, seaside-style interiors, but Melissa and Charlie encouraged them to avoid the expected and go for this ▶

ABOVE The first thought for upholstery for the sofa was a raspberry-toned fabric, but one of the couple’s teenage daughters suggested a purple instead. Connemara in Aubergine from Loro Piana proves a stylish choice.



ABOVE Situated on the third floor, the principal suite is a haven of tranquillity. A headboard covered in Fern Stripe in Lime Green/Blue from Turnell & Gigon is paired with Avalon bedside tables in Ecru from Trove. Annette swing-arm wall lights from Ralph Lauren add a classic finishing touch.

LEFT This bedroom with four built-in bunk beds along one wall is given a subtle nautical theme with paint in Vert de Mer by Farrow & Ball and a Roman blind in Melba Stripe Teal from Paolo Moschino. A natural cane side table from Hadeda provides a handy extra surface.

smart yet joyful aesthetic. “In my inexperienced design mind, I was picturing the classic coastal look,” says Tom, “but Melissa and Charlie said the key to making a successful beach house was for it not to look obvious.” Charlie expands: “We wanted to steer away from stereotypical blue and white and made a decision early on that green would be the founding colour. We see green as a neutral; it never feels too overpowering.”

Luxurious textiles, full-length curtains, and seating one can sink into put comfort and colour at the heart of the redesign, while sophisticated references to the seaside location appear in botanical motifs, wall panelling and grooved storage.

The confident palette has injected a lively mood; even the Tom’s parents’ dining chairs, that he had sat on as a child and was eager to keep, have been sprayed with a hot pink gloss paint. Although somewhat daunted by the idea of this, the couple took a leap of trust and love the outcome.

“This is a place that really makes us smile, and it gets a ‘wow’ from everyone who visits. I think that came from giving Melissa and Charlie a free hand, trusting them and saying ‘go for it’, but also because at the centre of every decision, we held the importance of wanting to be excited about coming here,” Tom says. “It was always a very busy home and it seems to have kept its energy. When it was finished, Mum came and had a cup of tea and said something along the lines of ‘I feel the house was always meant to look like this’. It meant a great deal that she thought the house was as it should be.” ■

RUGS OF PETWORTH

FLOOR ART

How a passion for handmade carpets sparked over 20 years ago has led to a showroom bursting with beautiful rugs from around the globe



Chance often plays a part in one's career path, and this was certainly the case for Alex Rees. Following a last-minute week of helping out at a family friend's rug store in 2001, Alex now finds himself the proud owner of his own rug company, Rugs of Petworth.

In good company, nestled amongst the independent boutiques and antique shops of Petworth, West Sussex, the stunning showroom boasts an unrivalled selection of handmade rugs, runners, carpets and cushions, sourced directly from the weaving countries of central Asia. Each piece is a unique creation, and Alex selects every one individually on his buying trips. "When I started working in the industry, I knew nothing of the world of handmade rugs," he explains. "What struck me was how magical it is that such beautiful furnishing pieces are still made by hand today, and also the joy these rugs can bring to someone's home."

After Alex's initial passion was sparked, he took a full-time job in his friend's shop before continuing to work in the handmade rug trade for a further seven years. Then came an opportunity that was too good to miss. "It was 2008, during the global financial meltdown, and I took a leap of faith, opening a small shop in Petworth," he says. The business grew, and with it a great team of staff, more stock, and, before long, the

opportunity to move to its current, larger premises in Golden Square.

Alex personally sources the very best rugs from weaving countries including Turkey, Pakistan and India, bringing them back to the Petworth showroom. "It's a real privilege to meet the skilled artisans who create such timeless pieces," he explains. "We care about the rug trade, and everyone in it – those who prepare the wool, the weavers, and the people who work washing and finishing the rugs once they're off the loom. The skills in all these disciplines are age-old and handed down through the generations."

Back in the showroom, Rugs of Petworth's friendly, experienced team is on hand to advise customers on the type of rug that would suit their homes. Rugs are stacked according to their size, and there is plenty of space in which to admire even the largest of carpets in their full glory. The brand's trademark style is 'modern classics', with the authentic charm of traditional rug designs reimaged with fresh colours. "Our mission is to combine the ancient traditions of handmade rugs with a fresh and inspiring retail experience," says Alex. Stepping inside the beautiful showroom, it is clear to see that this mission has been accomplished. ■

rugsofpetworth.co.uk

ABOVE LEFT Making sure the colourful array of rugs available in the showroom are neatly stacked.

ABOVE RIGHT Set in the charming town of Petworth, West Sussex, the spacious showroom is perfect for viewing the handmade rugs in their full glory.

EST. 1782
sworders
FINE ART AUCTIONEERS



Buy With Us. Sell With Us.

Discover the value of your Art and Antiques with a complimentary auction valuation and sales advice

valuations@sworder.co.uk

01279 817778 | sworder.co.uk



STYLE INSPIRATION

Our special section dedicated to interior design and decorating begins here ►



PATTERN FLAIR

Nina Campbell's covetable designs for fabrics and wallpapers exemplify her skill at harmonising global patterns with a palette to suit an English sensibility. Now this desirable look is brought to a new medium in collaboration with Fired Earth. Patterned and plain tiles allow Campbell's signature look to be explored in kitchen splashbacks, show-stopping bathrooms and enticing hallway floors.

*Selection of patterned 20cm x 20cm tiles,
£79.75 a square metre,
Fired Earth & Nina Campbell*



Captivating PERFORMANCE

Bedeck the garden with irresistible textiles designed to endure the rigours of outdoor living as well as to match the beauty and comfort of interiors fabrics

Outdoor fabrics were once limited to standard issue cushion covers that came with a furniture set. Today, luxury interiors brands are expanding their design ranges to include textiles suitable for indoor and outdoor use, even offering high-performance fabrics that are resistant to water, mould and fading and have higher rub counts to withstand outdoor use.

These fabrics offer the opportunity, too, to dress the garden as beautifully as the sitting room with an array of alluring colour schemes and patterns as well as creating a synergy between interior and exterior. They also allow the freedom to form a bolder 'room' scheme outside with larger scale designs and brighter colours than might be used inside.

Cohesion can be created with fabrics harmonising with colourful planting to curate a palette that chimes with the garden. With fabric houses such as Morris, Liberty and Schumacher launching outdoor ranges, as well as independent designers like Sarah Vanrenen expanding into performance fabrics, designs are becoming as varied as those available for interiors.

The growing range of patterns includes ikats, geometrics and stripes in addition to highly decorative botanical and floral designs – from the gentle English garden flowers to decidedly more vibrant, exotic blooms. Layer different designs in the form of cushions, deck chairs, tablecloths, parasols and even curtains billowing on a pergola for the ultimate outdoor 'room'. ▶

ABOVE Mix and match geometrics,, florals and stripes in vibrant azure, cobalt and teal to set a suitably summery feel in the garden. *Mokolo Outdoor Weaves*, from £85.50 a metre, all Romo

ABOVE LEFT SWATCH Add opulence with an outdoor damask. *Damask*, £115 a metre, *Al Fresco* collection, *George Spencer Designs*



This Parisian-inspired collection of indoor/outdoor textiles combines practical performance with sumptuous drape and softness. Sunbed cushions, *Café Society*, £110 a metre; parasols, *Cornucopia*, £120 a metre both *Madeaux*



Curtains on a pergola add a luxurious look, as well as seclusion and shade. To hang them, use strong wire with hooks at either end so they can be quickly taken down if need be. Curtains, Hana Outdoor, Acacia, £40 a metre; bench pad and cushions, Horto Outdoor, Indigo, £40 a metre, all Villa Nova



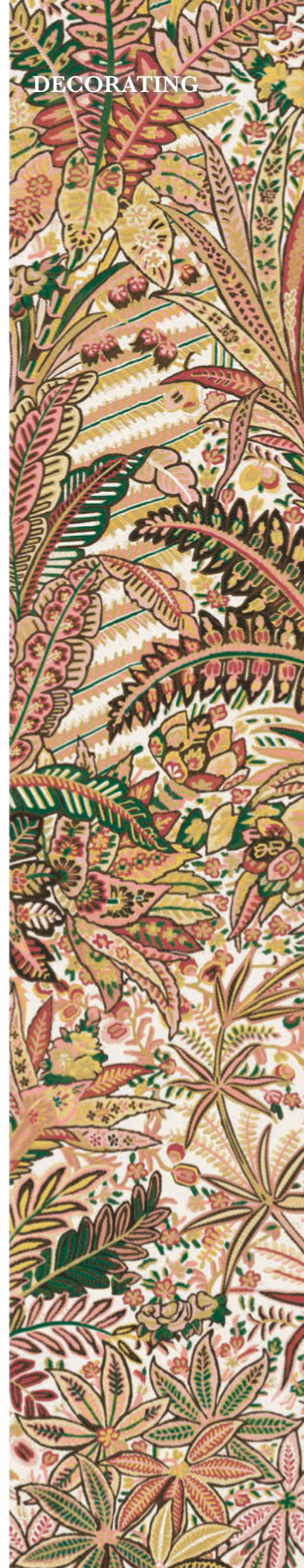
LEFT The Liberty Garden outdoor fabric range includes intricate florals, stripes, plains and more to set an irresistibly charming al fresco scene. Tablecloth, Betsy Bloom Easton, Fennel – Outdoor, £110 a metre; and all other fabrics, Liberty

SWATCH RIGHT Inspired by a 19th-century shawl design, this heavyweight jacquard is a hero piece of The Liberty Garden collection. Persian Voyage Jacquard Gotton, Lacquer – Outdoor, £198 a metre, Liberty

BELOW A new collection of high-performance, stain- and water-repellent jacquards in fresh colours from Pierre Frey make relaxing in the sunshine even more joyful. Cushion, Socoa, Piment, £238 a metre, Guethary collection, Pierre Frey

STYLE NOTES:

- High-performance fabrics can be used to create curtaining for adding an interior-style finish to a pergola or gazebo.
- Use lengths of fabric for a pretty, and practical tablecloth that co-ordinates harmoniously with seat cushions too.
- Create colour schemes in different areas of the garden with fabric and planting working together to form a tonal palette. ▶



BOTANICAL ATLAS WALLPAPER COLLECTION

LIBERTY. FABRICS

EVA CHAIR BY BONACINA 1889

INTERIOR COLLECTION — WALLPAPER AND FABRICS

FLOATING PALACE wallpaper in TWILL GREY, chair upholstered with HELIGAN LINEN in SLIPPER from the Art Colours collection

LIBERTYFABRIC.COM

Designed in collaboration with US interior designer Mary McDonald, this new fabric collection offers smart prints and weaves suitable for exteriors as well as interiors.

Hampton Stripe, Emerald, £110 a metre, Schumacher x Mary McDonald

SWATCH RIGHT A first step into outdoor fabrics for Sarah Vanrenen, Aztec Geo is an intricate broken stripe design perfectly suited to al fresco upholstery.
Aztec Geo, Green, £199 a metre, Sarah Vanrenen at Penny Morrison

STYLE NOTE:

- If in doubt, green and white will create a failsafe, chic colour scheme in the garden. ▶



SWATCH FAR LEFT

New outdoor fabrics collection Cuzcita allows signature William Yeoward style to be deployed in the garden.

Cuzcita, Spice, £55 a metre, William Yeoward at Designers Guild

LEFT A 91% linen and 9% acrylic composition gives this Inside & Out range by George Spencer durability combined with soft texture.

Inside & Out Stripes, £216 a metre; Inside & Out Plains, £206 a metre, all George Spencer Designs

BELOW Channel Mediterranean elegance with classic coastal stripes. *Portofino, Navy, £80 a metre, Manuel Canovas*

FEATURE KATY MCLEAN

PERFORMANCE FACTOR

Useful considerations for outdoor fabrics.

WET WEATHER Check if a fabric is described as water-resistant – able to withstand a light shower, or waterproof – able to be left outside all summer.

SUN-FRIENDLY Fabrics might be described as fade-resistant or colourfast with regard to sunlight, chlorine and saltwater. Some might also offer UV-blocking technology for a sun canopy, for example.

CLEAN & PRACTICAL Look for fabrics that are wipeable or can be washed; some also offer mould, mildew and stain-resistance. ■



— est. 1983 —

FIRED EARTH

CELEBRATING 40 YEARS

WALL & FLOOR TILES • BATHROOMS • PAINT • DESIGN SERVICE



NEW COLLECTION FEATURING 10 DECORS & 7 PLAIN TILES

Nina Campbell

the DESIGNER COLLECTION

Find out more at fireearth.com



A CELEBRATION OF STYLE

Behind the scenes at WOW!house

We reveal an exclusive look at the most anticipated new space at this year's WOW!house, The Legend Room by Nicky Haslam

Following the success of last year's WOW!house at Design Centre Chelsea Harbour (DCC) it is no surprise that the event is returning this year to showcase the talents and inspirational ideas of leading interior designers. There will also be a highly anticipated new addition - The Legend Room. Claire German, CEO of DCC, explains, "We have created The Legend Room to celebrate those trailblazers who have led the way in not just inspiring but actually building our industry. And there is no one more appropriate to start this celebration of design than Nicky Haslam, who embodies all these qualities, has always championed creativity and has an amazing legacy to share."

With an illustrious career spanning several decades, Haslam's panache for the opulent, the unexpected, the whimsical and the original is renowned. As is the legacy he has cemented through his mentorship of countless designers who have worked with him over

the years. For this prestigious project, Haslam has collaborated with his previous creative director of 13 years, Colette van den Thillart (who now has her own design practice in North America). "I work with her whenever I can, and this was a great excuse to get her back," he explains. "We work so well together; we have exactly the same approach and she sometimes takes things even further than I do." A sentiment supported by van den Thillart: "Nicky is one of my favourite people in the world, so I jump at any chance to do anything with him."

The concept for The Legend Room began, van den Thillart says, "With a sit-down and bouncing back and forth of ideas. We have a long history of collaborating. Some of our ideas are completely crazy, but through the process we home in on certain things that will work." They envisaged the room as a multifunctional space - an office or library - with aspects of an intimate sitting

OPPOSITE A sketch by Nicky Haslam of The Legend Room at WOW!house.

SWATCHES, CLOCKWISE FROM TOP LEFT

Chelsea in Forget me Not by James Hare, for the ceiling; Velluto a Coste (Corduroy), Casa Luiza at Colony, for the walls; Seafern in Clouded Lilac, for the bookcases, and Greenbrier in Fresh Mown Green for upholstery, both Random Harvest Fabric Collection by Nicky Haslam & Colette van den Thillart, available at Turnell & Gigon.

RIGHT Nicky Haslam and Colette van den Thillart, who have reunited for the WOW!house project.



'It was an honour to be asked, and rather wonderful it is called The Legend Room. It is very special and a chance to amalgamate all the things I have done over my career as a decorator'

NICKY HASLAM

room or study. "We loved the idea of a contemporary library, not stylistically but in terms of how we live today, with rooms being flexible and fluid. It's actually an 18th-century convention of rooms being quite hybrid spaces," she adds.

Haslam says, "It was important for the room to be one which men would enjoy too, as I think some are very much interested in decor nowadays and seeking great bits of furniture."

The pair have also taken the opportunity to unveil a new 12-piece furniture collection they have designed together and which will be produced by Haslam alumnus Justin Van Breda. "I'm very lucky to have worked with so many brilliant people over the years, so it's great to see their work and ideas today," says Haslam, whose influence will be felt in other parts of WOW!house, with other former protégés of his taking part, including Henry Prideaux, who is designing the kitchen.

The Legend Room will of course feature Haslam's iconic style. "To me, lavender is a signature colour of Nicky's," says van den Thillart. "A lot of people would consider it quite daring, but it's a wonderful colour and he does it so well. We have embraced it wholeheartedly, with a lavender corduroy on the walls. It's a casual, masculine fabric in an ephemeral colour that is definitely a homage to him." Haslam enthuses about the colour that has been so significant in his career: "It has always been my favourite colour, though I think of it as non-colour... it is mauve, grey, brown,

blue... the colour of air or the colour of shadows." He adds there is "a bright blue chintz ceiling to give the reflection of blue below; and lots of white plasterwork, which I love."

While much of the joy of WOW!house is of the unexpected, the duo generously offer tantalising glimpses into some of the surprising elements in the room: bookcases wrapped in one of their fabrics, Seafern; burnt plywood flooring; a sofa based on Haslam's own; a metamorphic cabinet that rotates to be a bar; and a new rug collection Haslam has designed for Silk Avenue. Van den Thillart notes the opportunity has given them an exciting amount of freedom: "There is a danger, as we love to go a bit far anyway, so we've pushed the envelope far enough for people to enjoy it and find it both accessible and adventurous."

As one would expect, there will be plenty to 'wow' visitors. Haslam starts to reveal the details of a theatrical pair of curtains inspired by a Rococo dress, and Colette interjects, laughing, "I thought we would leave those as a surprise!" Suffice to say the room will be bursting with Nicky Haslam's wit, whimsy and wisdom. The stuff of legend. ■

WOW!house, Monday 5 June–Thursday 6 July (Mon–Sat, 10am–6pm) Design Centre Chelsea Harbour, London SW10 0XE. Tickets £20, with offers available. For details and information, including VIP tickets, visit dch.co.uk/wowhouse



Timeless Timber Windows & Doors

Enhance the character of your property with beautifully bespoke and timeless timber windows. Traditional designs that deliver the highest standards and exceptional performance will fill your home with more natural light. Enjoy unobstructed views of the outdoors with a window that's truly unique.

Sash windows • Casement windows • Entrance doors • French doors • Sliding doors • Bi-fold doors

ENDURING IMPACT

With myriad paint finishes available, it can be difficult to know which is the best to choose and why. Understanding the benefits and practicalities of each type will help unlock a room's full potential and achieve desirable as well as durable results

Mix finishes for a striking aesthetic and to add practical, hardwearing sheen to high traffic areas.

Caravan in Architects' Matt (upper wall), £63 for 2.5l, Architects' Satinwood (shelving), £87.50 for 2.5l, and Architect's Gloss (lower wall & woodwork), £41.50 for 750ml, all Paint & Paper Library



ABOVE Deep colours have a rich, velvet finish in matt paints. Knoxville Gray and Peanut Shell in Regal Select Matte, £29 for 0.94l, Benjamin Moore

Paint is the most economical and practical way to completely transform a room, as well as being relatively easy to maintain. While choosing a colour is often the first port of call – and we have advice on doing so on page 94 – the type of paint finish can have an impact on the finished look and how the paint performs, so should be carefully considered, too.

The different terms and names used on tins of paint can be mind-boggling, with variations on flat, matt, eggshell, satin, silk and gloss used, along with a host of special ingredients that give the paint a certain performance factor. Here we get expert advice on why paint finishes matter, what they mean, and how they impact the colour, look, and longevity of a paint.

FLAT AND MATT

For most, emulsion paint is the premier choice for walls, with matt or flat finishes dominating the market. Water-based matt paints are easy to apply and, as Rob Green, founder of Coat Paints, explains, “Because they don’t reflect any light, they won’t highlight any imperfections, so you get a flawless finish on walls.” A sheen spectrum is used to describe the finish of a paint: “Most flat finish emulsions have a percentage of sheen between 4% and 7%. The more sheen in the finish, the less opacity, so you lose some of the hiding power required to disguise some of those lumps and bumps on your walls,” explains Simon Temprell, interior design manager at Neptune. A lot of top-end paints offer just 3% or even 2% sheen for an almost completely matt appearance. The benefits of this are not only hiding imperfections on surfaces but also a lovely soft texture. “The overall texture of a matt finish will lend a luxurious touch to many interior spaces offering an almost chalky appearance which in turn will help to soften bolder colours,” adds Helen Shaw, director of marketing at Benjamin Moore.

NATURAL CONSIDERATIONS

Water-based matt emulsions are practical and easy to apply, and produce a deep chalky texture, though this can mean they are hard to wipe clean. “Matt finishes are technically quite tricky to create and to make high-performance. While technology has advanced, and we can achieve durable, Class 1 finishes – like our 1829 Chalky Emulsion – they do remain less hardwearing than higher sheen finishes,” says Jessica Plateo, marketing manager at Craig & Rose. “This can mean they are often better suited to low-traffic areas.”

That said, new technologies and ingredients mean there are options that offer wipeable, and even scrubbable practicality, for those that would like a soft, velvet finish in a hallway, for example. “Our new Dead Flat finish has a scrub rating of Class 1 and is both washable and wipeable, meaning you can introduce a matt finish to some of the most demanding areas of your home,” says Patrick O’Donnell, brand ambassador for Farrow & Ball.

“Our Marble Matt Emulsion is a great option for kitchen walls and high-traffic areas in general,” adds Dominic Myland, CEO of Mylands. “Hardwearing and made with crushed Carrara marble, this luxurious finish is actually scrubbable, so is easy to clean and touch up if necessary.”

Other paint companies offering matt emulsions suitable for high-traffic areas include Little Greene, whose Intelligent Matt, as its creative director, Ruth Mottershead, explains, “is child-safe and a perfect choice for kitchens and bathrooms as it has a completely washable finish.” ▶



SHEEN LEVELS

Helen Shaw, director of marketing at Benjamin Moore says, "There is no specific standard in the UK for how to name sheen levels, so the names and reflectance levels vary between manufacturers. Put simply, the sheen or finish of a paint is measured by how much light reflects off a painted surface, resulting in gloss, or a lack thereof."

These sheen levels correspond to common paint terms:

- 2% to 7% – matt or flat paint, for a non-reflective velvet-like finish
- 10% to 20% – eggshell paint, a tough yet gentle sheen for a hard-wearing, slightly reflective surface
- 20% to 40% – satin or silk paint, a little more reflective than eggshell, with a long-lasting, washable finish
- 70% and above – gloss paint, a highly reflective and durable finish for woodwork as well as creating a dramatic effect on walls and ceilings



An eggshell finish on woodwork and lower walls is a durable as well as attractive choice. *Edith's Eye & Pique* in *Intelligent Eggshell*, £75.50 for 2.5l; *Wormwood* in *Absolute Matt Emulsion*, £54.50 for 2.5l, all Little Greene



'Eggshell is perfect for painting furniture as it has a durable finish with a soft sheen'

SIMON TEMPRELL, NEPTUNE



LIME WASH

Another choice for a beautiful soft matt finish on walls is traditional lime wash. Francesca Wezel of Francesca's Paints and a specialist in eco lime washes for over 25 years explains its enduring appeal

"I've been working with eco lime wash, one of the most natural paints, since 1996.

Lime wash is the oldest form of paint, made with lime water and linseed oil as a binder. Limestone is ground down and heated at a very high temperature, then cured and cooled in water; the longer it is in the water the thicker the paint. Our lime washes are cured for around a

year and so only need two coats for coverage. The lime wash must be applied to a semi-wet surface to help the paint absorb.

What I love most is you apply it by brush in a criss-cross method and it dries in a subtle, mottled effect. It's a natural paint effect that doesn't involve techniques such as rag-rolling and stippling for this beautiful variation. Lime wash has such a lovely texture

that absorbs all the light, and deep colours are softened by the lime. It is such a velvety, powder soft finish and I think it looks wonderful in strong colours.

Due to the nature of the paint, you can't wash or wipe it. I have it everywhere in my house except the hallway, and it lasts a long time as I find any scratches or marks can add to the character of the finish."

ABOVE LEFT Eggshell is a good choice for painting furniture.

Aldwych dressing table in Old Rose, £65 for 2.5l Eggshell, Neptune

ABOVE RIGHT

High-sheen finishes are ideal for cabinetry. *Shelf outer, Jonquil in Water-based Gloss, £85 for 2.5l; shelf inner, Malahide in Water-based Eggshell, £85, for 2.5l, both Edward Bulmer Natural Paint*

SOFT SHEEN

A practical option for areas that might need to be wiped clean or for woodwork and kitchen cabinetry is an eggshell or satin finish. “It’s not really known exactly how the term ‘eggshell’ originated, and it is now used fairly loosely, covering a gloss level anywhere between 10% and 40% (though most of this range is ‘satin’),” says Edward Bulmer of Edward Bulmer Natural Paint. Within this range of sheen level, paints might be described as eggshell, satin or silk.

Sarah Lloyd at Valspar Paint cautions that this level of sheen can mean slight imperfections are highlighted. “Eggshell finishes reflect small, delicate amounts of light just like, you guessed it, an eggshell. Silk finishes are easier to clean and so are well suited for walls, while satin finishes are often available in wood and metal paint and suitable for skirtings and door frames.”

Rob Green, co-founder of Coat Paints, adds, “The glossier the paint, the more light it reflects, so brush or roller marks are more likely to show

up, as well as any imperfections on the wall. A top tip is to use a foam roller head to help achieve a more flawless finish with a soft sheen or silk paint.”

Aesthetically, opting for a low- to mid-sheen level can be pleasing, and helpful for adding dimension to a scheme. “The luminous look of a semi-gloss paint is perfectly suited to highlight the architectural details of your home and create dimension on millwork, trim, and doors,” advises Helen Shaw of Benjamin Moore.

On a practical level, an eggshell finish is perfect for cabinetry and furniture. At Neptune, Simon Temprell reveals they only offer a flat emulsion and an eggshell finish, as the options achieve the Neptune aesthetic. “Eggshell can be used on walls where flat emulsion would be unsuitable, such as bathrooms or areas around the kitchen sink,” he says. “It is also perfect for painting furniture. We recommend an eggshell finish for all cabinetry because it has a durable finish that is easy to clean, with a soft sheen that isn’t too shiny.” ▶

Hallways often benefit from an eggshell finish for easy cleaning and withstanding occasional knocks and scrapes. *Blue Clay in Water-based Eggshell*, £69 for 2.5l, Sanderson



BISCA

Bisca Staircases - Designed, Crafted, Installed

www.bisca.co.uk | staircase@bisca.co.uk | +44 (0)1439 771702



Fitted or freestanding, our kitchens are refreshingly different and available throughout the UK, Europe & worldwide.

Visit our showroom in the heart of the Cotswolds and be inspired.

Hope House, High Street
Moreton in Marsh GL56 0LH

www.unfitted.co.uk
01608 650065

Download our 2023 brochure:



unfitted

extraordinary kitchens
beautifully made

'High-gloss interiors are a great way to enhance colour within a space, particularly one with little light'

DOMINIC MYLAND, MYLANDS



FULL GLOSS

Traditionally, an oil base has been used to achieve the highly reflective finish in gloss paint, which, while attractive, can be trickier to apply and result in longer drying times. Today, a number of vegetable-oil or water-based gloss paints are available that overcome these issues, as Ruth Mottershead explains: "Gloss paints have changed. While the traditional oil-based finishes are still available, ours now use naturally occurring vegetable oils to reduce solvent use. We also offer a water-based alternative, which delivers the same high gloss level of 85%."

Dominic Myland notes, "Whereas people would previously only use gloss paint for high-traffic areas and woodwork liable to scuffs and scrapes because of its durability, this is no longer the case. High-gloss interiors are particularly popular at the moment and are a great way to enhance the colour within a space – particularly in rooms with little light. The reflective sheen intensifies the colour and bounces light around the room."

ABOVE LEFT A full gloss not only offers practicality on lower walls but makes a dramatic feature with the same colour used above in matt.

Inchyra Blue in Modern Emulsion, £59 for 2.5l, and Full Gloss £31 for 750ml, Farrow & Ball

ABOVE RIGHT

Experiment with colours in the same paint finish for a playful look.

Soft Fern, Blue Danube, Coral Gables and Decorator's White, all in Regal Select Matte, £29 for 0.94l, Benjamin Moore

Though gloss may exaggerate any flaws, it can be used on walls for creative and dramatic effect. Preparation is key for the smoothest finish, as Myland explains: "Using the recommended undercoat or primer and making sure surfaces are clear of dirt and dust, and filling any holes or cracks before painting, allows for a seamless application of each coat."

MIX AND MATCH

With walls fully prepared, a range of finishes can be deployed to create an interesting and layered scheme, simply using paint. As Helen Shaw at Benjamin Moore elucidates, "Used correctly, there is nothing like opting for a gloss when you're looking to add drama and high impact to a room." Claire Vallis, creative director at Sanderson Design Group goes on to suggest, "Gloss, when used with bright, saturated tones, can create a dramatic statement and can add intensity to a scheme. Adding gloss to a door or panel in an otherwise matt or low-sheen room can introduce a fantastic pop of colour while adding depth and texture to a space." ▶



THE SOUTHWOLD TRADITIONAL FURNITURE COLLECTION



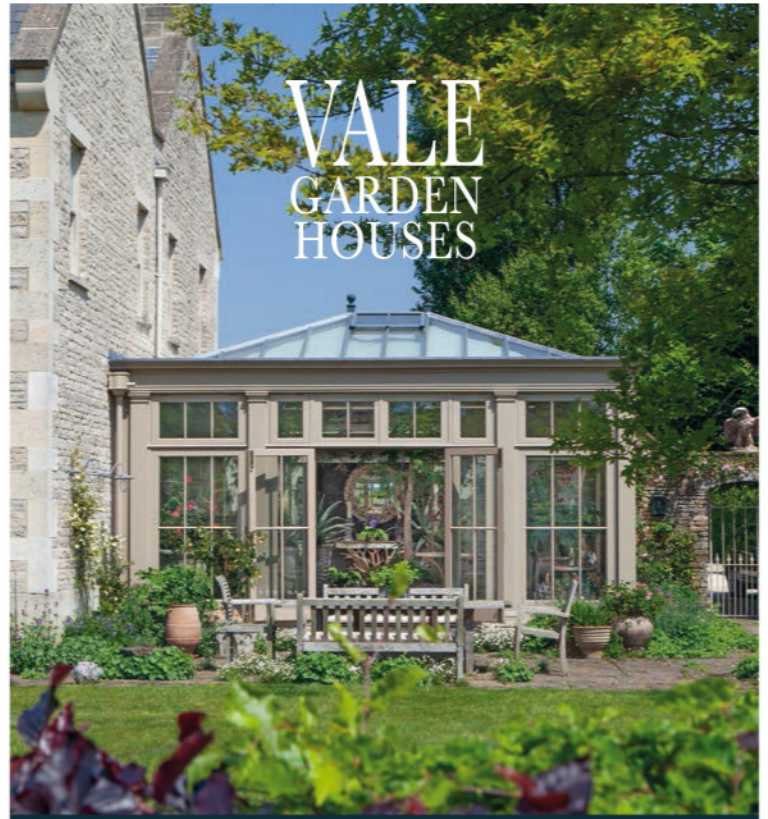
STRUCTURAL 25 YEAR GUARANTEE

HANDCRAFTED IN SUFFOLK
0333 400 1500 (LOCAL RATE)
www.harrodhorticultural.com

10% OFF QUOTE: 23ADEH3



SCAN HERE



FOR THE FINEST CONSERVATORIES,
ORANGERIES AND ROOFLIGHTS

+44(0)1476 564433

www.valegardenhouses.com

Jessica Clayworth, lead designer at Morris & Co, advocates a softer approach, simply using a sheen on woodwork. “If you are looking to make a feature of particularly great woodwork then adding a subtle sheen with our water-based Acrylic Eggshell can make more of an impact and allow it to sing, creating a lovely frame for a room.”

COLOUR DRENCHING

Using a single colour across walls, woodwork, and architectural features, is a popular choice and thanks to hardwearing matt finishes, can be done using a single finish across all surfaces. Head of creative at Earthborn Paints, Cathryn Sanders, advocates this approach: “Drenching walls and architectural features in a single matt colour can help to elevate a small room making it instantly feel bigger. As light is not reflected off the different surfaces, your eyes aren’t drawn to them giving the illusion of a larger room.”

Lead designer at Zoffany, Peter Gomez, suggests two other options: “One would be to accent architectural features like skirting boards or architraves by using a different finish such as eggshell or gloss paint, which contrasts with matt walls. Another way of colour drenching is to use different strengths of the same colour within the same scheme, applying different finishes on opposing walls, for example.”

MULTI-TEXTURAL WALLS

Different properties of finishes can be used to create striking designs or to add a more practical, wipeable finish. Andy Greenall, creative director of Paint & Paper Library advises: “I love to see finishes used in surprising ways. The same colour set side by side in contrasting finishes will create a contemporary moment in a traditional space. While the colour won’t differ, it will behave differently in different finishes, reflecting or absorbing light depending on the sheen level. This allows for the juxtaposing of our chalky Architects’ Matt with our high-sheen Architects’ Gloss to create a step change in finish that can be used to great effect from a splashback in a kitchen to a faux dado rail or a design statement in any space.”

SHADES OF COLOUR

It is worth noting that while the colour will be the same, different finishes can make the same colour register differently. “The hue should stay consistent across different finishes of paint,” Vallis notes, “but different finishes can increase the strength of a hue, and subsequently make the colour feel more intense and present.”

As a rule of thumb, a matt finish will make colours more intense and gloss will brighten them. “When light is directed from an angle, it is minimised by flat



‘The overall texture of a matt finish will lend a luxurious touch and an almost chalky appearance, in turn softening bolder colours’

HELEN SHAW, BENJAMIN MOORE

ABOVE Paint multiple surfaces in the same colour and finish for a smart, seamless look. Egerton Place in Marble Matt Emulsion, £61 for 2.5l, Mylands

finishes, hence all colours look more vibrant and deeper, dark colours especially so,” says Jessica Plateo. Gomez adds, “Shinier paint finishes are generally more reflective, which means a room’s light sources often affect how colours look on the wall. If you are using shinier finishes, bear in mind strong light sources can reflect on close proximity walls.”

Mixed finishes can be combined for practicality as well as aesthetics. Sanders suggests, “For a modern twist that looks good and is convenient too, try painting the top half of your wall in an ultra-matt paint and the bottom half in the same hue but with a higher sheen level. This not only looks great but will make it easy to wipe away any dirty marks from the knocks and scrapes we tend to see on the lower parts of our walls.” So, use different finishes to benefit the longevity and appeal of a scheme, adding character, extra dimension and texture with just a lick of paint. ■



Choosing COLOUR

Cultural historian and colour expert Kassia St Clair advises on selecting the right colours for enhancing the way we live

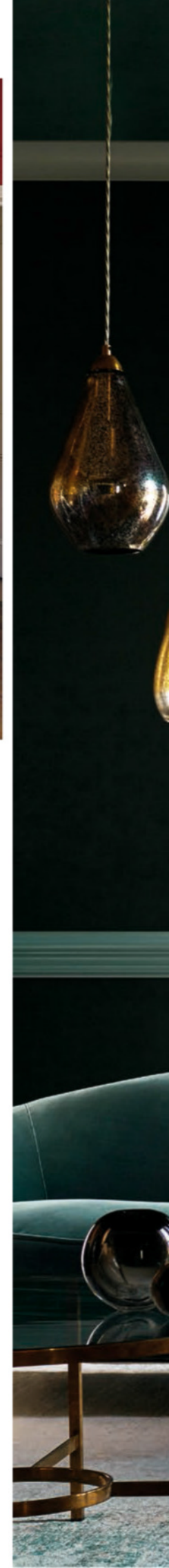
Imagine living in a world denuded of colour: no bright punches of yellow, pink or red. No soothing off-whites, nor rich, dramatic evergreens or sang bleus. Such a place would be dull and bare indeed. The shades, hues and tones that surround us have an incredible power over our moods and we can use them like a tool to enhance the way we live. Much of this impact is individual – one person’s ideal palette is another’s migraine-in-waiting. Still, there are broad cultural associations we can draw upon in order to harness the power of colour in our homes.

YELLOWS

Sunshine, daffodils, pineapples and sandy beaches. While yellow’s traditional connotations were not always quite so positive – during the 1890s, for example, it was linked with subversion, decadence and illicit, even dangerous, pleasures – today the slice of the spectrum slung between pale primrose, lemon drop and deep ochre feels quite the opposite. We tend to think of yellow as happy, optimistic and energised: the colour equivalent of a shot of espresso. This makes it a natural choice for spaces in which we want to feel inspired and alert: kitchens, offices and sitting rooms. Colour is a personal choice above all else, so if acidic shades are relaxing, or a bedroom is desired to be a more energising space, by all means, break out the yellow.

ABOVE LEFT Energising yellow is ideal for a sunny kitchen. *Giallo, £54.50 for 2.5l Absolute Matt Emulsion, Little Greene*

ABOVE RIGHT Deep reds are the ultimate statement hue. *Barbed Berry, £59 for 2.5l Chalky Matt, Morris & Co*



GREENS

While green is most commonly associated with the natural world – recycling logos, ‘green’ policies and political parties – it is not always so good. Naïve people are referred to as green, and it is also the colour of money, greed, envy and, in popular culture, poison. Historically, it was also a very difficult colour: there are relatively few naturally green pigments, especially bright ones. This is why green enjoyed popularity in the mid- to late-1800s when a cheap, synthetic

pigment was discovered that could easily be applied to wallpaper and textiles. Morris & Co wallpapers, with their scrolling curlicues of foliage, recall this period.

Today green is having a renaissance, thanks both to our desire to bring the outdoors in, and a renewed interest in bold, foliage-rich prints and patterns. Tones drawn from nature are soothing and easy to live with, while jungle, jewel or evergreen shades can be either cosy or dramatic, as desired. ▶



Popular greens are easy to live with in all shades of the spectrum, from pale and fresh to deep and opulent.
Huntsman Green, £59 for 2.5l True Matt Emulsion, Zoffany

DECORATING



REDS AND PINKS

Few colours have as deep a hold on the human psyche as red. This, after all, is the colour of blood, rage, passion and seduction. Archaeologists long ago discovered that many otherwise entirely unrelated cultures prized red pigments, using them to decorate their dwellings, themselves or sprinkle liberally over their dead. Today, there is some evidence that we respond intuitively to this part of the spectrum. Competitors in various sports who wear red have been shown to have a slight advantage, for example. This may help explain why red is the hue to use to make a statement.

Pale reds – otherwise known as pinks – are having a moment in interiors, with more brands than ever before having them in their colour cards. Great news for dyed-in-the-wool pink-lovers. A word of caution: do not be tempted to copy a scheme seen in another's home without testing it where it is to be used first. From lighting conditions to the tone of the floor, colours will look very different in different rooms.

ABOVE LEFT Blues bring chic freshness. Cupboards in Trumpet, £72 for 2.5l Eggshell No17, Earthborn Paints

ABOVE RIGHT Tasteful neutrals can be smart and elegant for a clean look. Fabric from Jane Churchill

BLUES

Surveys conducted since the Second World War reveal that blue is the world's favourite colour, so it is probably not surprising that it is an interior mainstay. Thought of as a trustworthy colour – an association that dates back to the widespread use of indigo dye in official uniforms.

Nautical themes, ticking stripes, practical, cosy and chic navy furnishings all make use of blue's reputation for formality to help bring a buttoned-up freshness to rooms. Pale- to mid-blues – sometimes dismissed as cold or unwelcoming – work well in all sorts of contexts too, from kitchen cabinetry to living rooms and from bathrooms to bedrooms. They look wonderful paired with white and neutrals, but they can also play well with greens, yellows and reds for those seeking a bolder palette.

NEUTRALS

In a world in which success is often measured by the ability to grab attention, neutrals get a bad rap. Beige, grey, cream, greige, off-white – those pallid tones that dominate paint charts even if they do not sit at the top of many Instagram feeds – are often thought of as the palette of those who are 'afraid of colour', a condition to be coaxed out of at all costs.

However, there are also a lot of very good reasons why neutrals are considered timeless: they play well with each other and bolder hues, they are soothing, providing a refuge from the saturation of our screens and the world outside, and they tend to be broadly inoffensive. It may never be possible to fall passionately in love with a palette of tasteful greiges, but it is unlikely that a violent antipathy for it will be developed either. This, for the record, is not something that can be guaranteed from vibrant schemes beloved of algorithms. So, while it is true that a neutral home is unlikely to set the world on fire, perhaps there is a supreme kind of comfort in realising that there is no need for it to do so. ■

Sleep Soundly with Wool this Summer

Don't let those hot Summer nights affect your sleep. Our wool bedding is scientifically proven to regulate your temperature night after night, meaning it will keep you snoozing comfortably - whatever the weather.



*Scan me and
book a free
personal sleep
consultation
to find your
perfect sleep*

woolroom


BETTER SLEEP, NATURALLY

BEDS | BEDDING | MATTRESSES | KIDS & BABY | HOMEWARES

Peak shopping Village, Rowsley DE4 2JE | 01629 732784 | info@thewoolroom.com

www.woolroom.com



 AllergyUK



An interiors guide to

For those who enjoy luxury interiors and outstanding design, Pimlico Road is the perfect choice for an inspiring day out in the city. We share our Little Black Book of where to visit at this one-stop destination



Arriving at Pimlico Road, London's leading design district, it is easy to lose oneself in the village-like bustle and charm. Here, an exciting collection of designers and makers form a creative community filled with hidden gems, from furniture and lighting to wallcoverings and antiques. Once solely synonymous with classic English style, it has continued to evolve and now houses a mix of established and contemporary industry names side-by-side.

CHELSEA TEXTILES

There is an enveloping sense of comfortable luxury upon entering the Chelsea Textiles showroom at 40-42 Pimlico Road, designed by Studio Indigo. A recent addition to the Pimlico family, Chelsea Textiles took up residence on the street at the end of 2019, before celebrating its 30th anniversary the following year. The brand's journey began by creating authentic recreations of antique embroidered fabrics from the 17th and 18th centuries, using some of the world's finest

craftsmen to ensure the highest quality. Today, swathes of these intricate fabrics can be found hanging along the showroom wall together with curated displays of wallpapers, furniture, and accessories. chelseatextiles.com

CHRISTOPHER BUTTERWORTH

Renowned antiques dealer Christopher Butterworth's shop at 71 Pimlico Road holds pieces dating from the 17th century to the late 20th century and has long been admired by respected

names such as David Mlinaric and Nicky Haslam. While the shop is filled with many treasures, from seating to tables to *objets*, Butterworth's speciality is antique lighting of all styles, shapes and sizes. christopherbutterworth.com

COX LONDON

Cox London's 46 Pimlico Road showroom offers a warm and calming welcome to those who step inside. On show are an assortment of the brand's nature-inspired designs, including furnishings, lighting



eclectic aesthetic should also visit its sister shop at 36 Bourne Street, the original location of Christopher Howe's workshop in 1986, which today offers a range of carefully curated traditional leathers, textiles, trimmings and wallpapers. howelondon.com

JAMB

Since launching in 2001, Jamb has gained a reputation for dealing in fine antique and reproduction fireplaces and fire grates, as well as lighting, furniture and ornaments. The showroom at 95–97 Pimlico Road works as a gallery, exhibiting antique and reproduction pieces side by side. The space has been created with a distinct traditional English country house feel, an aesthetic the brand places at the centre of its design ethos. jamb.co.uk

JANE CHURCHILL INTERIORS

Jane Churchill is one of Pimlico Road's longest-standing residents, having been situated at 81 Pimlico Road for over 40 years. Starting out with a gift shop named Treasure Island, the renowned interior designer launched Jane Churchill Design in 1982, selling fabrics and wallpapers. Today, the building is home to Jane Churchill Interiors, known for classic style with a contemporary twist. The conservatory makes the ideal spot for looking over schemes, colours and samples. janechurchillinteriors.co.uk

NINA CAMPBELL

This year sees the opening of Nina Campbell's new flagship shop in Newson's Yard, marking a return for the celebrated designer to the road where she built her eponymous brand 50 years ago. 43 Pimlico Road brings together the interior design studio and retail side of the business under one roof for the first time. Structured as a series of expertly designed vignettes, each filled with the brand's luxurious furnishings and accessories, the showroom has the feel of a home designed by Campbell herself. shop.ninacampbell.com

THE ODD CHAIR COMPANY

A family-run, British company, The Odd Chair Company's two-storey showroom at 45 Pimlico Road holds a ever-changing collection of its armchairs, sofas, ottomans, occasional chairs, bar stools, dining chairs and beds. Sitting alongside these, is a selection of restored and traditionally upholstered antique pieces showcasing The Odd Chair Company's expertise and passion for furniture. theoddchaircompany.com

PAOLO MOSCHINO

Combining an interior design studio with a collection of its own products, Paolo Moschino

is a name associated worldwide with luxury interiors. Situated at 202 Ebury Street, the retail store and showroom offer a diverse mix of home furnishings displayed in expertly designed scenes to inspire. A few streets down at 8–14 Holbein Place is the flagship fabric showroom and interior design studio, which also hold a selection of antiques and furnishings. paolomoschino.com

PULLMAN EDITIONS

A must-stop shop for art enthusiasts, Pullman Editions, sister company of London's Pullman Gallery which stocks late 19th and 20th-century collectibles in St James's, specialises in vibrant, art deco-style posters. Different to the surrounding buildings, 94 Pimlico Road was originally an alleyway before being turned into a retail space around 14 years ago. Fortunately, the extremely high ceilings create an ideal space for displaying art. pullmaneditions.com

ROBERT KIME

Home to the Robert Kime interior design practice, founded by the late designer and antiques dealer of the same name, 190–192 Ebury Street holds an impressive antiques collection as well as the brand's own designs. The showroom

reflects the Kime ethos with an eclectic mix of pieces for visitors to discover, from furniture to lighting to fabrics. robertkime.com

ROSE UNIACKE

Known for combining old and new in a warm, characterful manner, Rose Uniacke is a respected designer of interiors, furniture and lighting, and a dealer in antiques and special pieces. The flagship store at 76–84 Pimlico Road provides a tranquil and welcoming oasis with off-white walls, minimalist displays and a bright, airy ambience. The recently opened Rose Uniacke fabric shop across the road at 103 offers the full range of textiles plus newer offerings such as table and bed linens, pyjamas and more. roseuniacke.com

SOANE BRITAIN

A treasure trove of furniture, accessories, lighting, fabrics and wallpapers, Soane Britain is committed to celebrating and cementing the future of British craftsmanship. Originally sited, in 1998, in the basement of Christopher Hodson's antique shop at 89 Pimlico Road, the showroom is now located across the ground floors of two Georgian townhouses at 50–52 Pimlico Road. soane.co.uk ■

ALSO OF NOTE...

- The Newson's Yard development, which opened at the beginning of this year. Located in what was London's oldest timber yard, it is home to Nina Campbell, Plain English, The Lacquer Company, Modernity, and & Objects.
- Belgravia in Bloom, running from 22–29 May 2023 to celebrate the RHS Chelsea Flower Show. This year's theme is 'Into the Wild', so expect magnificent window displays featuring colourful creatures and exotic flowers.
- The Pimlico Road Farmers' Market, held every Saturday at Orange Square. On offer is an abundance of local produce, from freshly cut flowers and handmade preserves to artisan bread and organic meats.
- Daylesford Organic, 44B Pimlico Road. If the sun is shining, take a seat outside at Daylesford Organic's cafe to watch passers-by and enjoy food and drink from Daylesford's Cotswolds farms.
- Hagen, 30A Pimlico Road. Reset with an afternoon cup of coffee at Hagen espresso bar and try one of the famous cinnamon buns made in collaboration with family-run, Cotswolds-based bakery, Blake's Kitchen.
- The Orange, 37 Pimlico Road. Relax and unwind in the rustic yet elegant interior of this welcoming public house and hotel. Indulge in a selection of small and large plates or, on a Sunday, one of the delicious roasts.

PULLMAN EDITIONS ART DECO POSTERS



Limited to editions of 280, our newly-commissioned Art Deco posters feature glamorous holiday destinations around the world, ski resorts in the European Alps, and the world's greatest historic automobiles. Over 100 designs to choose from, all printed on 100% cotton fine art paper, measuring 97 x 65 cms. Priced at £420 each (inc. UK sales tax). **Private commissions are also welcome.**

 @pullmaneditionsposters

All images and text copyright © Pullman Editions 2023



Pullman Editions
94 Pimlico Road
Chelsea
London SW1W 8PL

+44 (0)20 7730 0547
info@pullmaneditions.com



Our central London gallery

View and buy online at www.pullmaneditions.com



CALLAGHANS OF SHREWSBURY

KING & COUNTRY

As we celebrate the Coronation of King Charles III, art gallery Callaghans of Shrewsbury reveals some of its favourite artists' royal connections

ABOVE *Bridge at St Owen*, Edward Seago (1910–1974), oil on canvas, 53cm x 63.5cm, signed

Daniel Callaghan, who, together with wife Stella, has built a reputation for the fine art gallery Callaghans of Shrewsbury on an international level during their 30 year history says, “British artists are considered among the best in the world with their extraordinary use of artistic techniques and styles. These are often inspired by the beautiful British landscapes and flora, so with all eyes on the UK it feels like a fitting time to show them at their best.”

To tie in with the celebration of the Coronation of His Majesty King Charles III, the Callaghans have put together something special at the gallery too. “We will be holding a *Coronation Collection* exhibition (at the gallery and online), for which we have chosen a few British artists we are immensely proud to represent,” Stella explains.

EDWARD SEAGO (1910–1974)

From his early friendship with Princess Mary, Countess of Harewood (1897–1965), landscape artist Edward Seago went on to make even more impressive royal connections. During the Second World War, he made the acquaintance of George VI as an unofficial war artist under Lieutenant General Harold Alexander on the Italian campaign. These years would prove vital in the development of Seago’s later style. Following the war, he formed a close association with the Royal Family, particularly Queen Mary, Queen Elizabeth The Queen Mother, the Duke of Edinburgh, and King Charles, the then Prince of Wales, who admired and collected his paintings and received many as gifts from the artist.

Throughout his life, Seago was interested in the transformation of the landscape by the in-between



stages of the day – sunrise and early morning, late afternoon, evening and dusk. But also, by the weather, the rain, mist, fog and snow and by the changing seasons, and the way in which the sky reflected this.

SIR JOHN KYFFIN WILLIAMS (1918–2006)
Welsh landscape painter Sir John Kyffin Williams lived at Pwllfanogl, Llanfairpwll, on the Island of Anglesey. Widely regarded as the defining Welsh artist of the 20th century, he became well-known for his use of thick, impasto oil paints often applied with a palette knife. He typically used muted colours to create minimalist abstract landscape paintings and some portraiture too.

Elected an ARA in 1970 and an RA in 1974, Williams was president of the Royal Cambrian Academy from 1969 to 1976, and again from 1992 to 2006. He was awarded the OBE for his services to the arts in 1982 and received a knighthood in 1999.

LAURENCE STEPHEN LOWRY (1887–1976)
In his highly unique style, and with great wit and sensitivity, Lowry recorded the industry, architecture and characters that fascinated him in and around Manchester during the mid-1900s. His overpopulated cityscapes and bleakly humorous depictions of everyday life – both highly recognisable and historically significant – made him one of Britain's most renowned

and widely collected artists, with his paintings fetching as much as £7.6 million at auction to date.

During his life, Lowry was offered five honours by Her Late Majesty Queen Elizabeth II, including a knighthood, and rejected them all. Yet in 1953, he was given the honour of being the Official Artist of the Coronation of Queen Elizabeth II. He was one of a select few artists who had been chosen to create a painting to commemorate the special day.

DAVID SHEPHERD CBE (1931–2017)
David Shepherd was most famous for painting wildlife and portraits, most notably his painting of Her Majesty The Queen Mother. As an outspoken conservationist, he received an OBE in 1980 and a CBE in 2008 for his services to wildlife conservation. During his life he was also made a Member of Honour of the World Wide Fund for Nature (WWF) and he was made a Fellow of the Royal Geographical Society. On the artistic side, he was awarded an Honorary Degree for Fine Arts by the Pratt Institute in New York in 1971 and elected a Fellow of the Royal Society of Arts in 1986. In 1996, he was made an Officer (Brother) of the Order of St John. ■

Further works of these and other artists can be viewed via the online catalogue at callaghan-finepaintings.com

ABOVE LEFT
The Brewery, City Road Salford,
Laurence Stephen Lowry RA (1887–1976), original pencil on paper, 35cm x 25cm, signed and dated 1956

ABOVE RIGHT
Bull Elephant by David Shepherd CBE (1931–2017), oil on canvas, 18cm x 26cm, signed

The Telegraph



EXCLUSIVE OFFER

Try The Telegraph free for 4 months



ENJOY UNRIVALLED ACCESS TO THE CORONATION

Feel closer to every moment with The Telegraph's renowned royal correspondents. Explore in-depth insight on [telegraph.co.uk](https://www.telegraph.co.uk), plus the daily digital newspaper in the Telegraph app. Cancel anytime.

Claim this exclusive offer today
at [telegraph.co.uk/offer](https://www.telegraph.co.uk/offer)
or scan the QR code

To scan the QR code, open your phone camera, point it at the code and tap the banner that appears on screen. On older phones, you may need to download a QR code reader first.



Terms and conditions apply. Offer can be redeemed until July 13, 2023. After your 4-month trial period you will be charged £9.99 per month for the rest of your first year. Renews automatically, cancel auto-renewal anytime.

QUINTESSENTIALLY

Inspiration for seasonal pastimes and making the most of life at home starts here ►

GOOD ENOUGH TO EAT

Geraniums begin flowering in May and keep producing colourful florets until around autumn. These hardy plants are easy to care for and can happily live in pots, hanging baskets or borders situated in sunny or semi-shady locations. With over 260 varieties available in an array of scents and flavours such as apple, ginger, rose and chocolate, geraniums not only make pretty al fresco table decorations but they can also be used to enliven all manner of dishes from petals on salads and puddings to leaves in teas and cocktails. To buy geranium petals and leaves safely, try Nurtured in Norfolk, nurturedinnorfolk.co.uk



What to do in **JUNE**

Enliven the senses with the sweetness of summer vegetables, delicate floral flourishes and natural textures that are soft to the touch

GATHER... *flowers and grasses to decorate a summer table*

Create a pretty, assorted floral arrangement to add a note of simple elegance and beauty to any gathering, whether an impromptu lunch with friends and family or a more formal celebration with a collection of assorted-sized vessels and a mix of fresh and dried flowers and grasses. Mingle bud vases and small bottles, a perfect stem inserted into each, with jugs and larger vases filled with sprays of dried grasses and bunches of flowers. Create movement, shape and texture through choices of flowers and foliage for a charmingly eclectic, though carefully considered, assortment that feels organic and not 'overdone'. Intersperse with candles of different heights for further variation and to add a pretty glow into the evening. ▶







GROW... *courgettes*

These are a summer staple and much loved for their versatility. What is more, courgettes are surprisingly easy to grow from seeds – sow them directly outside in early June and expect a crop about eight weeks later. For speedier results, combine these with small established plants from garden centres, planted at the same time as the seeds to allow for a progressive and abundant supply of courgette fruit throughout the summer and way into autumn. The tastiest courgettes are those picked from the vine while quite small, about 10–12.5cm long. Doing this will also encourage more fruits to form so there will be plenty to savour in all sorts of recipes from salads and tarts to cakes and chutneys. Remember the flowers, too, which can be eaten raw in salads or stuffed and deep fried.

Handmade bowl, part of a collection of artisan stoneware tableware by Rebecca Williams, £29, Rowen & Wren

STUFFED GLOBE ARTICHOKES

The trick with artichokes is simple – the fresher, the better as the leaves are softer and the artichokes will cook more quickly. It is not necessary to use extra-large artichokes for this dish. In fact, the best ones to use are violet artichokes, which are readily available from greengrocers and tend to come in boxes or in bunches of five. The preparation is very important, so take your time – the end result will be worth it.

Serves 4 as a starter

INGREDIENTS	1 garlic clove, crushed to a paste with a little sea salt
8 globe artichokes	juice of 1 lemon
small bunch of flat leaf parsley	5 tbsp extra virgin olive oil
	75ml dry white wine
FOR THE STUFFING	generous pinch of sea salt and freshly ground pepper to season
100g dried breadcrumbs	
50g parmesan, grated	

METHOD

- Take each artichoke and peel off the outer leaves until you get to the lighter-coloured leaves. Using a speedy peeler, peel the outer green part of the stems and heart. Then cut the top off the artichoke with a sharp kitchen knife or bread knife, to expose the heart of the artichoke.
- Using a teaspoon or melon baller, scoop out the thistly choke. If there is very little thistly choke, then the artichoke is young and will be very tender – this is good. The older ones with lots of choke are fine but may be slightly more arduous to prepare.
- Once you have prepared the artichokes, place them in a bowl of water. Lightly bash the parsley, then add this to the bowl too – this will prevent the artichokes oxidizing, which makes them change colour and taste bitter. You can use lemon instead of parsley, but I find lemon can overpower the flavour of the artichoke.
- Leave the artichokes in the water with the parsley for 10 minutes, then take them out and leave them to one side ready to be stuffed, ensuring there is no residual water left inside the artichoke.
- Preheat the oven to 200°C/180°C fan /400°F/Gas 6.
- To make the stuffing add all the stuffing ingredients, except the wine, to a bowl and mix well.
- Evenly divide the stuffing between the artichokes, then place them on their sides in a lightly oiled baking dish.
- Add the wine and 75ml of water to the dish and cover it tightly with foil.
- Bake the stuffed artichokes for 30 minutes, then remove the foil and bake them for a further 10 minutes.
- Take them out of the oven and leave to cool for 5 minutes, then serve on their own, or with some sliced prosciutto di Parma and Asiago cheese as an antipasto.

Recipe taken from *The Italian Pantry* by Theo Randall, with photography by Lizzie Mayson, £27, Quadrille

EAT/HARVEST... *globe artichokes*

June is the month when these beautiful vegetables are at their best and there is no tastier way to enjoy them than with a recipe bursting with freshness and flavour. Take the lead from top chef Theo Randall and transform them into this sensational Italian-inspired dish by following his recipe (*opposite page*). ▶



ADD... *a decorative wallpaper border*

If planning a seasonal refresh, rather than committing to a complete redecoration, transform a plain wall with a strip of floral pattern. A wallpaper border can be hugely effective when applied over a painted surface or an existing wallpaper, and a pretty sprig design is ideal for introducing a playful floral note in an instant. It can also be a useful way to create a visual horizon on a wall, effectively lowering or raising a ceiling, or to zone different areas of a room. Wallpaper borders are hugely versatile in their ability to inject a hint of decorative charm, so be creative and use one to frame a doorway or window that draws the eye to view of the garden beyond, or to add interest to shelf edges or a round a mantelpiece.

Floral Sprig border in Moss, £98 a roll, Salvesen Graham



UPDATE... *a bathroom with summer linens*

Lightweight cotton and linen fabrics are a seasonal alternative to traditional terrycloth towelling. Stock up on all sizes in a leafy green, zesty lemon or rose-pink shade for a simple summer refresh to a family bathroom, principal en-suite or even as a welcome addition to a guest bedroom. Look out for organic cotton, slubby linen and waffle weave options that are not only soft on the skin but are quick drying too. Their non-bulky and lightweight credentials make them particularly well-suited to holiday packing so have a fresh, clean pile ready to pop in a bag for a trip to the beach, a picnic in the sunshine or a lazy day by the pool. ■

Organic cotton hand towels £30, bath towels £60, all Sorbet Living



The
Headboard
Workshop

www.theheadboardworkshop.co.uk
or call us on 01291 628216

Headboards | Beds & Mattresses | Ottomans | Valances



George Barclay
— ENGLAND —

Featured:
Orthopaedic Box Bed, Medium
RRP: £89⁹⁹ (excl. delivery)

George Barclay dog beds are available in a broad selection of styles and sizes to suit miniature breeds, through to Great Danes. Visit our website to view our extensive collection of dog beds, or purchase the ultimate indulgence for your faithful companion.

www.GeorgeBarclay.com Tel: 01722 712203 Email: sales@georgebarclay.com



Designs for life OUTDOORS

Create special areas in the garden for ultimate comfort whether for a coffee break, a leisurely lunch, relaxing in the sun or an evening with friends and family

Now that summer is officially here, it is time to make the most of the lighter days by spending time outside with family, friends or relaxing alone. By designating areas in the garden according to where the sun shines throughout the day and practicalities such as proximity to the house, it can be enjoyed by all long into the

night for everything from a tranquil morning coffee to convivial al fresco dining and drinks.

For each purpose, it is essential to choose the right location as well as furniture and accessories made of suitably hardwearing materials. Remember to add inspiring details and luxurious touches to enhance every precious hour spent in the garden. ▶

ABOVE Armchairs are the most comfortable option for leisurely lunches. *Mayfair oval dining table with eight dining armchairs, £3,699, Bridgman*



TOP Outdoor cushions can be made bespoke. Sarah Vanrenen Aztec Geo fabric, £198.66 a metre, Penny Morrison; limited edition chair,

£1,200, Sarah Vanrenen **ABOVE** Find a shady spot for coffee. This furniture is a sustainable choice, as it is made from recycled

aluminium, and Oxley's buy-back scheme means it can be recycled again if a change is required. Rissington two-seater set, £2,385, Oxley's

Breakfast al fresco

Sitting outside with a coffee is a lovely way to start the day. Whether it is alone or with a family member or friend, this moment of quiet reflection can be achieved with a simple bistro table and chair set or a bench laden with cushions next to a side table. For a plush sense of comfort, opt for an outdoor sofa or an armchair beside a coffee table. This is the perfect opportunity to get the morning sun before it is too hot and make the most of areas of the garden that will be in direct sunlight later in the day. Find a suitable location for quiet contemplation such as next to a water feature, pond or flower bed of scented blooms.

When it comes to the materials for the furniture, cast-iron copes easily with our changeable British weather while a breathable mesh base keeps cushions well ventilated and dry. Outdoor cushions made from coconut coir, natural latex, lambswool or cotton and upholstered in water repellent fabric can be left outdoors when a light shower occurs.



A side table is a particularly useful addition with metal being one of the more popular options. “Easy to clean and weather-resistant, this material promises to stay looking beautiful all year long,” says Alex Tolofson, co-director at Nöa & Nani. “Offering versatility through portability, it is best used on a patio for true stability and function. Choose a table which matches the outdoor seating to ensure the garden is cohesive. Townhouse gardens tend to be on the smaller side, so by pairing items together in a similar colour palette, it helps to make the space appear larger rather than busy and cluttered.” ▶

ABOVE Made from steel and all-weather ‘rattan’, this sofa and matching armchair includes three showerproof scatter cushions. *Weybourne Driftwood three-seater sofa, £1,095, and armchair, £495;*

Rander ceramic stool, £225, all Oka
TOP RIGHT Provide softness underfoot with stylish outdoor rug. *Dove Grey Juno water-resistant outdoor rug, from £85, Weaver Green*



ELEVATING ELEMENTS

Set the scene in a beautiful spot that appeals to all the senses

- Create the feeling of a private room with scented flowers growing over an arch and a mirror within view
- Relax next to the soothing sound of a small water feature and add a garden mattress for a comfy repose

BELOW Create a focal point with a strong whalebone arch for climbers. *Whitby arch, £430.99, Forest Garden*

RIGHT Add reflective surfaces for added light and space. *Salisbury metal mirror, £109.99, Gardenesque*



Simply add water and switch on for sensory sounds. *Solis water feature with light display, £249.99, Ivyline*



RIGHT Recline in style. *Bouquet de Fleurs garden mattress, £220, Birdie Fortescue*



Sunny dining

A leisurely lunch outdoors is a wonderful way to break up the day. A large table will be flexible enough for all sizes of gatherings, from a small family lunch to a large group of friends. “Whether you choose a traditional dining set or something modular, look for furniture with glides on the chair and table legs to prevent scratches on paving slabs and adjustable feet for stability on any uneven surfaces,” advises Francesca Hadland, styling expert for Bridgman. “If you opt for a modular set, pair it with an adjustable table to transform your space from lounging to dining in an instant.”

Positioning also needs to be taken into consideration, as Hadland adds, “Patios are the natural choice for a luxurious al fresco lunch. With most patio areas sitting directly behind the home, you won’t have to walk too far when bringing refreshments to and from the kitchen.”

Furniture placed in an area that sees the most sun during midday will ensure that everyone is warm but it is important to provide shade with a parasol or pergola, as this will protect guests as well as the food. Dressing the table is also key to making the occasion as memorable as possible. Homeware and lifestyle designer Sophie Allport recommends connecting the table setting with its surroundings. “Choose colours that complement the nature around you,” she explains. “Whether that is flowers or blossoming trees, tie in these colours through your linens and candles and add splashes of colour through florals picked from the garden. You don’t want to overpower the table, so keep it simple with a white or gingham tablecloth that gives a blank canvas to create elegance that will delight friends and family and offer a calming space.” ▶

TOP A metal pergola creates a sleek designated dining area. Southwold traditional

pergola, from £3,295, Harrod Horticultural
ABOVE Enjoy lunch long into the afternoon, even

if it turns chilly, with a firepit table. Ember Grey firepit table, £949, Danetti



TOP Dress the table to complement its surroundings. Table runner, £43.50; side plate, £11.50; stoneware nibbles bowl, £11.50, all Sophie Allport

ABOVE For classic country with a colourful twist, mix and match different dinnerware. Ribbed woven runner, £9.50, and all other tableware, Marks & Spencer

BUYER'S GUIDE

ELEVATING ELEMENTS

Invest in pieces to create a luxurious space for dining outside

- Heighten the anticipation of eating outside with an outdoor kitchen or a built-in pizza oven
- Add panache with a firepit in the middle of the table and a drinks trolley for effortless service

Protection from the sun is vital. Three-metre sail shade with stand, £349, Dobbies



ABOVE Keep guests warm. Monterey firepit table (with sofa and two benches), £5,489; griddles, £266, Bramblecrest

BELOW Self-service drinks. Marina outdoor trolley, £2,655, Indian Ocean

ABOVE Create an outdoor kitchen with a handy surface for food preparation. Lundhs Royal worksurface, from £680 a square metre, Lundhs Real Stone



Choose a statement marble for an outdoor cooking area. Calacatta Viola Estramoz marble, from £600 a square metre, Cullifords





SITTING SPIRITUALLY

— Of Lyme Regis —



Luxury British Design, Unmistakably Sitting Spiritually



The only bespoke swing and bench maker endorsed by the RHS
sittingspiritually.co.uk 01297 443084



Scan to request
a brochure

Summer lounging

Relaxing with a book or taking an afternoon nap should ideally be enjoyed in a quiet area with a comfortable daybed, lounge or sofa to stretch out on. This applies to lounging on the lawn, next to the pool or simply on a patio or decked area close to the house.

A piece of furniture that is easily moveable means it can be positioned in or out of the sun according to the time of day. Materials to look for include weather-proof woven rope, as it is resistant to mould, mildew and bacteria as well as being resistant to rubbing and stains, including sun cream. Aluminium is also strong and hardwearing, while water-repellent and UV-resistant cushions will cope with all climates.

“There are lots of things to consider when creating an outdoor lounging area,” suggests Sue Jones, co-founder of Oka. “I see it as an extension of the home, so try setting it up as you would your sitting room, with plenty of seating in the way of sofas and armchairs, a table or two for trays of drinks and candles, and don’t forget a few outdoor cushions to add a bit of pattern and colour. If you want to create a spot that feels intimate and cosy, add a few potted plants or trees around the seating area – it will help to make it feel more private and inviting.” ▶



ABOVE Modular sofas are perfect for relaxing as seating can be altered.

Tresco six-seater modular sofa, £4,075, Neptune

RIGHT Choose seating with sumptuous cushions for time spent with family or friends.

Two-seater armchair, armchairs and stools, £11,700; Sandstone coffee table, £2,560, all The Heveningham Collection



RIGHT Choose an eye-catching print.

Lexham parasol, £1,200, East London Parasol Company



ELEVATING ELEMENTS

Take resting in the garden to an indulgent level and lounge in style

- Relax in shaded comfort in a lavish overhead-design daybed or beneath an elegant parasol
- Make sure guests are entertained with a handy sidetable for drinks and a garden game or two

Retreat in a cocooning daybed. *Maze tulip rattan daybed, £999, Cuckooland*

Take the daybed to the next level with a canopied design. *Tribu Pavilion daybed, £10,940, Go Modern*



LEFT A folding table is easy to set up for drinks. *Alkerton folding table, £97.99, Made to Last*

BELOW Partake in a gentle game of croquet. *Sussex croquet set, £159.99, Jaques of London*



Drinks after dark

Enjoying evenings in the garden is all about heat and light. Guests need to feel warm so as well as having plenty of cosy blankets on hand, consider a table with a built-in firepit or a separate firepit or chiminea. "A firepit can bring some welcome warmth and atmosphere," says Simon Temprell, interior design manager at Neptune, "and it will extend the summer season into the cooler months so you get as much use out of your outdoor room as possible."

For garden illumination, solar lighting is energy-saving while a string of festoon lights – hung across the trees in a courtyard or over a wooden pergola – looks so pretty. Exterior sockets will allow for more permanent solutions so consider investing in this if you are planning on regular outdoor entertaining. A bar is also a wonderful way of making a night of it whether for casual drinks or a special celebration.

Keeping the action close to the house also ensures that guests do not have far to go if they need to pop inside and there are many ways of elevating an area into a welcoming space. "Outdoor rugs can help to soften the feel and offer an opportunity to bring in some colour, along with throws and cushions," adds Temprell. "A large coffee table can be used for casual dining, or if there is room, create a secondary space for a dining table and chairs or benches. Outdoor rooms are the ideal way to extend the home, especially if linked by colour or style." ■



A firepit and festoon lights take a daytime gathering into night. Turin lounge set, £1,550, Cox & Cox



Candles, lights and lanterns create a special atmosphere. Paper lanterns, festoons and candles all from Lights4fun

ELEVATING ELEMENTS

Make evening gatherings out of the ordinary with atmospheric details and unexpected touches

- Entertain guests with an outdoor projector area and serve drinks and nibbles in refined tableware
- Instil a cosy mood arranging seats around a classic firepit or fireplace and installing smart outdoor lights

BELOW Set up an outdoor cinema. The Freestyle portable projector, £499, Samsung at John Lewis & Partners



ABOVE Traditional-style heating. Hoole Seaton firepit, £219.99, Gardenesque

FAR LEFT Take the indoor style of sconces outside. Quintiesse Pearson wall lantern, £177.65, Moonlight Design

LEFT Serve wine in proper glassware. Veloce wine glasses, £62.50 for two, Riedel





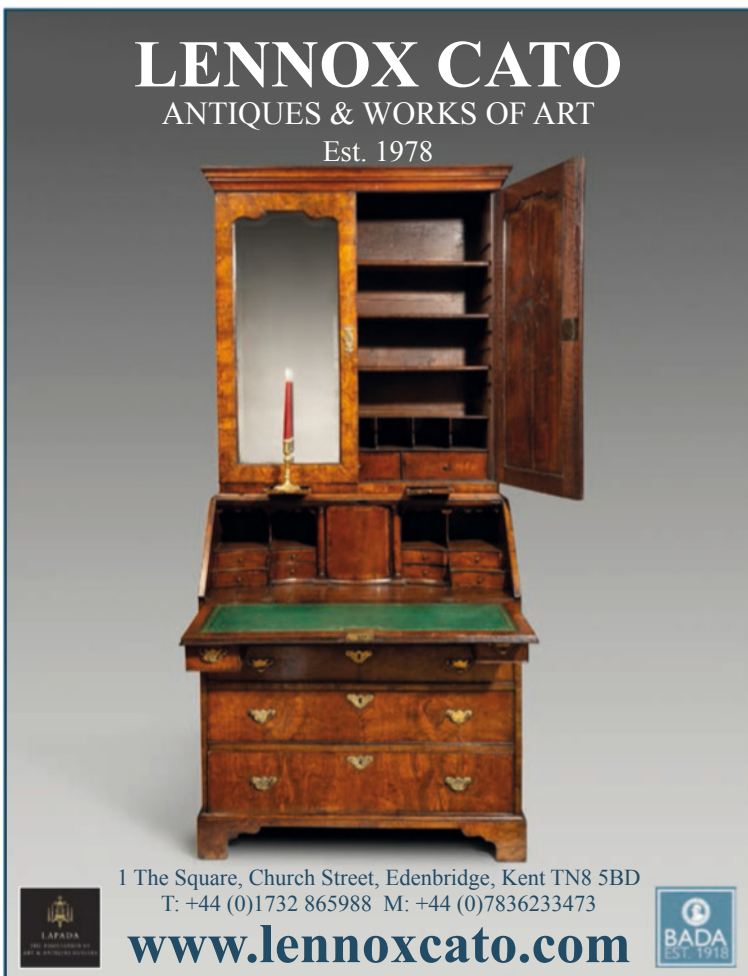
deVOL

Simple Things, Beautifully Made



SALISBURY ANTIQUES CENTRE

www.salisburyantiquescentre.com
 94 Wilton Road, Salisbury, SP2 7JJ
 Tel + 44 (0) 1722 410 634



LENNOX CATO

ANTIQUES & WORKS OF ART

Est. 1978

1 The Square, Church Street, Edenbridge, Kent TN8 5BD
 T: +44 (0)1732 865988 M: +44 (0)7836233473

www.lennoxcato.com



JUSTFABRICS

FABRICS | MADE TO MEASURE | HOMEWARE

www.justfabrics.co.uk
 01242 388390

Over 13,000 Reviews

 Trustpilot

A close-up photograph of a nest filled with straw. The nest contains several chicken eggs of various colors: brown, light brown, speckled brown, and two pale blue eggs. The eggs are arranged in a cluster, with the blue eggs in the foreground. The straw is dry and yellowish, creating a textured background for the eggs.

Chicken Run

As he publishes his new book, author and gardener Arthur Parkinson gives us an exclusive insight into his expertise on how to keep chickens

FEATURE, PHOTOGRAPHY & ILLUSTRATIONS ARTHUR PARKINSON
PORTRAIT BY JONATHAN BUCKLEY



ABOVE Arthur Parkinson tending to a pair of Black Copper Marans hens.

RIGHT The beautiful Sicilian Buttercup hen with its body of rich mottled golds and deep mustard yellows, rather like a partridge.

OPPOSITE Gathering freshly laid, palm-warm eggs is a treat.

I've spent the last few days making a fruit cage extra secure with layers of wire mesh over the netting, as well as rolling it out flat and firmly pegging it into the ground so that it acts as a foot-wide skirt around the entire exterior.

These enforcements are not extra security for raspberries, but for my hens, who, with all this modified chicken-run effort, can peck about safely within what is now more of an aviary. Hopefully, the enforcements will stop foxes from chewing or digging into them. There's another reason though for this steel-framed adaptation – the netting and mesh above the hens' heads means that they are being kept within the law of the confusing legislature that all hens must be kept 'inside' due to bird flu.

What this really means is that domestic poultry needs to be kept under cover to avoid contact with wild birds. They can't legally be allowed to range freely about the garden, at least for now, and it's likely that this will continue to be the case until early summer, but with bird flu considered to be an endemic virus that's mutated due to intensive farming, ▶

'The bonny, burnt orange-necked Burford Browns are worthily famed for their eggs. Cream Legbars lay blue ones plentifully, running around with their heads topped with little fluffy tiaras'



it is, alas, here to stay. While we wait for either a vaccination programme to be rolled out or a change of approach, being on your guard against avian flu is necessary, especially if you have nosy neighbours!

You might think this risk makes it a bother to keep hens, but keeping them is going to become a major part of what, I feel, will soon be a necessary movement back to self-sufficiency and away from the supermarket aisles. Despite the hens' confinement, they still lead a luxurious existence compared to their commercial sisters, and their perfect eggs are a true luxury, making all the daily effort of hen-keeping deliciously rewarded.

During this time – well-coined as 'flockdown' – hens need plenty to do, as boredom caused by lack of free-ranging can cause feather-pecking. To curb this, a deep litter carpet of mud-preventing wood chippings and chopped straw for constant scratching about in is essential. Old garden chairs and benches are enjoyed as daytime perches, too. For hens with fine feathers, dry soil for dust bathing is required; it's a feather-fluffing ritual – they purr as the soil gets in between their feathers. I've been collecting old compost from neighbours' greenhouses to enable this chicken spa to be open daily.

The whole hen house (summer houses can be superbly adapted, too) needs to be guarded from the dreaded blood-sucking red mite parasite that can infest the perches. I use a spray that is full of peppermint twice a week, spraying the perches especially. Rats are commonly associated with hens, too, but it's the chicken feed lying about that encourages them. Investing in a rat-proof hen feeder, such as the hanging one by Roamwild, from the outset will avoid trouble.

Most hens will begin to head into their nesting boxes, persuaded by fake rubber eggs, once they reach ►

ABOVE The divine Silver Laced Wyandotte cockerel, one of the most beautiful types of chickens.

ABOVE RIGHT A Barbu d'Uccle hen displaying a chicken's natural curiosity

and desire to explore.

RIGHT A flock of rare breeds. It is possible to get fertile eggs by post, and this helpfully makes it possible to hatch out hard-to-find rare breeds.



Aviary raised off the ground on a solid platform, with a roof against bird flu.



LIFESTYLE

point of lay at 18 to 25 weeks old. Suddenly, their pale faces blossom and the aptly titled 'egg song' will be heard cackling out from the hen house.

Long spring days naturally encourage laying, while short winter ones do not. Laying also ceases during the annual moult, which is usually in autumn, when old feathers are dropped to grow a new set, and the hens become grumpy. Olive oil-soaked brown bread and baked beans will spur on their new uniforms. Stress, the aftermaths of a predator's attack and any red-mite infestations not dealt with will also curb laying. Diet is crucial for good eggs: quality layer pellets together with kitchen scraps will ensure decent egg numbers, while grit and bashed oyster shells will ensure strong eggshells.

With protection, plenty of space and a good diet, many garden hens can reach the age of six or eight, and bantams often live longer. The allure of cuddly bantams, namely Pekins, may well completely besot you, but personalities here are at their strongest and their will of wishing to become mothers is relentless until broodiness is given permission. The problem with hatching your own eggs results in spare cockerels – a testosterone-fuelled bore in the end!

The finest layers include old British rare breeds that desperately need to be supported, including Hamburgs, Derbyshire Redcaps, and Old English Pheasant Fowls – who have combs like mulberries and thick, raincoat-like feathers, and whose eggs were once noted as being the richest-tasting of all. Their wings may allow them to outmanoeuvre a prowling fox, but they may prove an issue within a suburban garden, hence the beauty of a fruit-cage hen run. ■



ABOVE A pair of Lavender Pekin chickens making themselves at home. Pekins can be kept either in pairs or trios in solid-floored hutches and arks.

LEFT A Jubilee Orpington hen, so called because it was bred in celebration of Queen Victoria's reign.



PRACTICAL POULTRY

- legbarsofbroadway.co.uk – Exclusive breeder of Burford Browns and Cotswold Legbars.
- chickentoyourdoor.co.uk – A range of hybrid and pure breed hens.
- thinkingofchickens.com – Natural herbal remedies for dealing with mites and feather-pecking.
- domesticfowltrust.co.uk – Traditional garden hen houses, poultry and poultry equipment.
- nester.co.uk – Sustainable, maintenance-free chicken coops including a wagon-shaped design.
- smallholderfeed.co.uk – Natural feed without artificial growth promoters or yolk pigments.
- roamwildproducts.co.uk – Rat-proof hanging chicken feeders.

ESSENTIAL READING *Chicken Boy: My Life with Hens* by Arthur Parkinson, Particular Books, £22

THE ENGLISH FAUX FLOWER
COMPANY



www.theenglishfauxflowercompany.com



**NORFOLK
GARDEN
FURNITURE**



01263 741134

ACRES FARM
Club Fenders

Photo by kind permission of Jane Churchill Interiors



Made to measure in Berkshire since 1980
Measuring Service. Brochure Available.
www.acresfarm.co.uk Tel: 01189744305

BEDSTEADS

Antique Bed Specialists

In Brass, Iron, Wood & Upholstered Wood



Large stock of beds in all styles and sizes.

Handmade mattresses and bases.

Restoration and widening service available.

All items on website in stock and available for delivery

Online and telephone sales available and showroom by appointment during Covid19 restrictions

Chelvey Court Barn, Backwell BS48 4AA • 01275 464 114

enquiries@bedsteads-uk.co.uk www.bedsteads-uk.co.uk

Your Ultimate Coronation Souvenir



ORDER
ONLINE
NOW

On 6 May 2023, Charles III will be crowned King of the United Kingdom in a glittering ceremony steeped in tradition. *Crowning of the King* is your essential souvenir of this historic occasion, bringing the story of the monarchy to life through colourful features, lavish images and archive photos. From the publishers of BRITAIN magazine, *Crowning of the King* is the ultimate Coronation keepsake.

Order online for only **£9.99 (UK) / \$15.99 (US) / £12.99 (RoW)** at
www.britain-magazine.com/CrowningoftheKing

and have it delivered direct to your door

Also available at good newsagents

Includes postage and packaging

COMING NEXT MONTH



The ENGLISH HOME

JULY EDITION

- Create the ultimate cooks' kitchen
- Discover luxurious escapes for a home-from-home stay
 - Decorate with the colour blue
- Step inside elegant homes dressed for summer living
 - Update bathrooms with smart ideas

PLUS Seasonal projects, beautiful buys and much, much more

ON SALE
31 MAY 2023



ENGLISH
HOME
PODCAST



podcast.theenglishhome.co.uk

Follow us on Twitter @englishhometeam
Pinterest at pinterest.com/theenglishhome
Facebook at facebook.com/theenglishhome
Instagram at instagram.com/englishhomemag

ONE FINAL THING...

Use colourful fabric to make a hammock in which to while away the hours in the garden

Beautiful fabric need not go to waste at the end of a decorating project. Why not create a hammock? Use lightweight fabric (strong enough to hold body weight), ideally with some stretch. The average size of a hammock is 3–4 metres long and the distance between the anchors should be half a metre longer than the length of the material. Ready-made metal and rope kits aid the making process. Add co-ordinating cushions to ensure it is a pleasure to use and behold.

Alfresco range Toucan fabric and Majorelle fabric, £56 a metre, Clarke & Clarke; metal and rope kits and stands found at simplyhammocks.co.uk ■



FEATURE SUZANNA LE GROVE PHOTOGRAPH JON DAY



BEAUMONT
& FLETCHER
INTERIOR ATELIER



FURNITURE | EMBROIDERY | MIRRORS | LIGHTS | FABRICS

261 Fulham Road, London SW3 6HY +44 (0)20 7352 5594 www.beaumontandfletcher.com

Alexandra sofa in Kyma – Rio with Ariana cushion and Nelson mirror



BY APPOINTMENT TO HER MAJESTY THE QUEEN
SUPPLIERS OF FURNISHING FABRICS AND WALLCOVERINGS
G. P. & J. BAKER LTD. POOLE

GP & J BAKER

TIMELESS DESIGN



GPJBAKER.COM

ASHMORE COLLECTION