

The

# ENGLISH HOME

21  
years  
ANNIVERSARY

*Celebrating the essence of English style*

January 2022 | Issue 203 | UK Edition

## TIME TO CELEBRATE

Set the scene for festive entertaining

### *Designer forecast*

Leading industry names on how to decorate in 2022

### PLANNING AHEAD

A season by season guide to projects for the home & garden

## NEW YEAR HONOURS

Celebrating the best fabrics, wallpaper, furniture & lighting

### MERRY & BRIGHT

Classic homes dressed for a Christmas to remember



# THE WHITE KITCHEN COMPANY

*Wooden Kitchens Handmade For You.*





*Season's  
Greetings*

From All at  
The White Kitchen Company

Beautiful Bespoke Kitchens

Hand-painted Solid Wood & Lacquered Oak Kitchen Furniture

To discover more about our exceptional value visit:

[www.thewhitekitchencompany.co.uk](http://www.thewhitekitchencompany.co.uk)

01604 435835

# CONTENTS

JANUARY 2022



34

## Notebook

- 13 NEWS** Our monthly digest of notable people, places and products.
- 20 DESIGN DISCOVERIES** Traditional crafts and celebrations form our focus.
- 26 LAST-MINUTE LUXURIES** Indulgent gifts to suit all manner of recipients.
- 28 GOOD INTENTIONS** Buys to encourage New Year's resolutions.
- 30 THE EDIT** Luxury lighting through to showstopping beds.
- 31 SUBSCRIBE** The perfect gift for a loved one or a treat for yourself – a subscription to *The English Home*.

## English homes

- 34 UNDERSTATED CHRISTMAS** Designer Justin van Breda's elegant London oasis sets the scene for relaxed festivities.
- 44 HIDDEN GEM** An enchanting country home in Gloucestershire welcomes with a wealth of period features and history.
- 54 TURNING ON THE CHARM** A mix of antiques, brocante and contemporary classics makes a Tudor house a home.
- 62 CAUSE FOR CELEBRATION** Christmas with Trevor Pickett in his eighteenth-century Suffolk cottage.

## Style inspiration

- 71 STRENGTH & BEAUTY** The sensuous delights of cashmere velvet.
- 72 DESIGN PREDICTIONS FOR 2022** Industry experts on the way we will be living in the year ahead.
- 81 NEW YEAR HONOURS AWARDS** The brands and products deserving of our eagerly awaited annual shortlist.

## Quintessentially

- 101 WINTER GUESTS** Encouraging feathered friends to visit the garden.



- 102 FROM PATCH TO PLATE: MATTHEW FORT** Our food columnist on the joys of the humble onion.
- 104 SET THE SCENE FOR: FESTIVE DRINKS** Planning ahead for a sparkling evening gathering with loved ones.
- 112 HOME PROJECTS SEASON BY SEASON** A guide to the optimum time to tackle different jobs in the home.
- 120 SOCIAL INFLUENCERS** Interior designer Jane Churchill on elegant entertaining inspired by her renowned relations Nancy Astor and Nancy Lancaster.
- 130 ONE FINAL THING** Create a magical setting to celebrate beneath the stars.



## A letter from home



Set the scene for a festive drinks party with a fresh lick of paint, twinkling lights and additional decorations. For further inspiration, turn to page 104. All paint, Annie Sloan



**H**ave you spotted the inscription on the fireplace that features on our cover this issue? It reads 'East, West, Home's Best' – a sentiment that feels particularly apt at this time of year. Throughout the festive season our homes become a place to host family and friends, a winter retreat providing us with comfort and warmth, as well as a backdrop for daily inspiration.

It's perhaps no surprise, then, that now is also when many of us tend to dream about the home improvements we'd like to make over the coming months. As our living spaces have had to evolve in response to recent world events, we consulted interior designers and industry experts to discover how they are re-thinking space, design and decoration solutions for life at home in 2022 (p72). We're particularly fascinated by the move to 'broken-plan' rather than 'open-plan' spaces to accommodate and close off work zones, and by the forecast for more confident use of pattern and colour. If you're considering a decorating or larger-scale project, our *Home Projects Season By Season* feature offers a practical guide to planning jobs in the home and garden (p112). For further inspiration, turn to our *2022 New Year Honours Awards* (p81) featuring noteworthy designs and products launched in the past year.

Of course, this issue is also packed full of ideas for celebrating and simply enjoying the festive season too, from setting the scene for New Year's drinks (p104) to last minute gifts (p26). We wish you a very Happy New Year!

Samantha

Samantha Scott-Jeffries, Editor



Follow us on Twitter @englishhometeam

Pinterest at [pinterest.com/theenglishhome](https://pinterest.com/theenglishhome)

Facebook at [facebook.com/theenglishhome](https://facebook.com/theenglishhome)

Instagram at [instagram.com/englishhomemag](https://instagram.com/englishhomemag)

### NEWSLETTER

Sign up for free to receive the regular newsletter from *The English Home*. As well as a selection of articles direct to your inbox, you will receive exclusive reader offers, savings on magazine subscriptions and more.

To take advantage of this offer, visit [theenglishhome.co.uk/newsletter/](https://theenglishhome.co.uk/newsletter/)



### NEW – PODCAST

Listen to episode five of *The English Home* podcast to discover more about Jane Churchill's fascinating new book (featured on p120 this issue) and our columnist Matthew Fort's further thoughts on seasonal comfort food, (p102).

To listen to this and other episodes, visit [podcast.theenglishhome.co.uk](https://podcast.theenglishhome.co.uk)



## THE INTERIOR DESIGNER'S EYE. THE CLIENT'S VISION

I never forget that my clients aspire to live in a real home, not a show home. With empathy and flair, I blend recycled antiques with new, striking pieces to create perfectly imperfect interiors.

THE  
NATURAL  
WOOD FLOOR

Co



## Beautiful flooring, designed to last

Over 100 designs | Expert advice | 20,000m<sup>2</sup> of stock | Express delivery

SHOWROOM  
20 Smugglers Way, Wandsworth, London, SW18 1EG  
020 8871 9771

[www.naturalwoodfloor.co.uk](http://www.naturalwoodfloor.co.uk)

# The ENGLISH HOME

## CONTACT US

**Editorial** 020 7349 3700

The English Home, Jubilee House,  
2 Jubilee Place, London SW3 3TQ

**Email** [theenglishhome@chelseamagazines.com](mailto:theenglishhome@chelseamagazines.com)

**Website** [theenglishhome.co.uk](http://theenglishhome.co.uk)

**Advertising/Publishing** 020 7349 3700

The Chelsea Magazine Company Ltd

**Email** [info@chelseamagazines.com](mailto:info@chelseamagazines.com)

## EDITORIAL

**Editor** Samantha Scott-Jeffries

**Managing Editor** Sarah Feeley

**Art Editors** Claire Hicks, Rebecca Stead

**Contributing Designer** Mark Bradley

**Sub Editor** Lea Tacey

**Decorating Editor** Katy Mclean

**Features Editor** Eve Middleton

**Homes & Lifestyle Editor** Clair Wayman

**Editor-at-Large** Kate Freud

**Editorial Assistant** Nell Whitaker

## ADVERTISING

**Group Sales Director** Catherine Chapman

020 7349 3709; [catherine.chapman@chelseamagazines.com](mailto:catherine.chapman@chelseamagazines.com)

**Head of Sales Operations** Jodie Green

**Advertisement Manager** William Bernard

020 7349 3749; [william.bernard@chelseamagazines.com](mailto:william.bernard@chelseamagazines.com)

**Senior Sales Executive** Alice Leeson

020 7349 3711; [alice.leeson@chelseamagazines.com](mailto:alice.leeson@chelseamagazines.com)

**Sales Executive** Laura Barry

020 7349 3712; [laura.barry@chelseamagazines.com](mailto:laura.barry@chelseamagazines.com)

**Advertising Production** 01202 472781; [allpointsmedia.co.uk](http://allpointsmedia.co.uk)

## PUBLISHING

**Chairman** Paul Dobson

**Managing Director** James Dobson

**Chief Financial Officer** Vicki Gavin

**Publisher** Caroline Scott

**Circulation Manager** Daniel Webb

**Senior Subscriptions Marketing Manager** Luke Chadwick

**EA to Chairman** Sarah Porter

## ONLINE

**Group Digital Manager** Ben Iskander

**Email & Digital Creative Manager** Jenny Choo

## PRODUCTION

**Reprographics Manager** Neil Puttnam

**Printing** William Gibbons Ltd

## NEXT ISSUE ON SALE 5 JANUARY 2021

THE ENGLISH HOME (UK EDITION) ISSN 1468-0238 (PRINT)

THE ENGLISH HOME (UK EDITION) ISSN 2397-7086 (ONLINE)

Did you know you can manage your subscription online? Oversee your print and digital subscriptions online today simply by signing up at [www.subscription.co.uk/chelsea/Solo/](http://www.subscription.co.uk/chelsea/Solo/). Stay up to date with the latest issues, update your personal details, and even renew your subscription with just a click of a button.

## SUBSCRIPTION ENQUIRIES

01858 438 854

### SUBSCRIPTION OFFICE

The English Home  
Tower House, Lathkill Street  
Market Harborough  
Leicestershire LE16 9EF  
Tel 01858 438 854  
Email [theenglishhome@subscription.co.uk](mailto:theenglishhome@subscription.co.uk)  
(UK and Rest of World)

### SUBSCRIPTION RATES

UK £72 (12 issues)  
Overseas £90 (12 issues)

### NEWS DISTRIBUTION

Seymour Distribution Ltd  
2 East Poultry Avenue  
London EC1A 9PT  
Tel 020 7429 3667



COVER PHOTOGRAPH  
© DAN DUCHARS

# JULIAN CHICHESTER



[JULIANCHICHESTER.COM](http://JULIANCHICHESTER.COM)

LONDON | NEW YORK | ATLANTA | HIGH POINT



**CHARLOTTE GAISFORD**

British Boutique Fabric and Wallpaper Designer



**CHARLOTTEGAISFORD.CO.UK**

For further inspiration on creating a quintessentially English home, visit our website, listen to our NEW podcast or catch up on our socials



*Visit us online for...*

- + Room-by-room decorating advice
- + Interviews with top interior designers
- + Invaluable buyers' guides

**NEW PODCAST**

*Episode five available now*



- + Acclaimed interior designer Jane Churchill on the new entertaining book inspired by her elegant relations Nancy Astor and Nancy Lancaster.
- + Food critic and regular columnist Matthew Fort on seasonal comfort food to indulge in

[podcast.theenglishhome.co.uk](http://podcast.theenglishhome.co.uk)

**theenglishhome.co.uk**

FOLLOW US ON...



Twitter @englishhometeam  
 Pinterest at [pinterest.com/theenglishhome](https://pinterest.com/theenglishhome)  
 Facebook at [facebook.com/theenglishhome](https://facebook.com/theenglishhome)  
 Instagram at [instagram.com/englishhomemag](https://instagram.com/englishhomemag)



Learning with experts

How to paint a stunning portrait  
Taught by Rosso Emerald Crimson

 Learning with experts

# Give the gift of knowledge

Treat your family, friends and colleagues to the gift of knowledge from the world's biggest names including portrait artist Rosso Emerald Crimson.

Meet enthusiasts from around the world and try project-based learning, get personalised feedback from the experts, all in our interactive online classroom.

Whether you're the foodie of the family, a green fingered gardener or a budding photographer - we've got online courses for everyone.

Instant gift cards available at:  
[learningwithexperts.com](https://learningwithexperts.com)



Michel Roux Jr  
Classic French  
Cuisine: The Roux  
Way Collection

Join legendary chef Michel Roux Jr in this three course collection and learn how to prepare classic French cuisine in your own home.



The Complete Guide  
Garden Design  
Diploma

Master the complete range of garden design skills from some of the most highly acclaimed experts in the industry.



It is amazing to be able to learn and receive feedback directly from the experts.

- Julia

# WESTLAND LONDON

SPECIALISTS IN ANTIQUE FIREPLACES & FINE ANTIQUES SINCE 1969



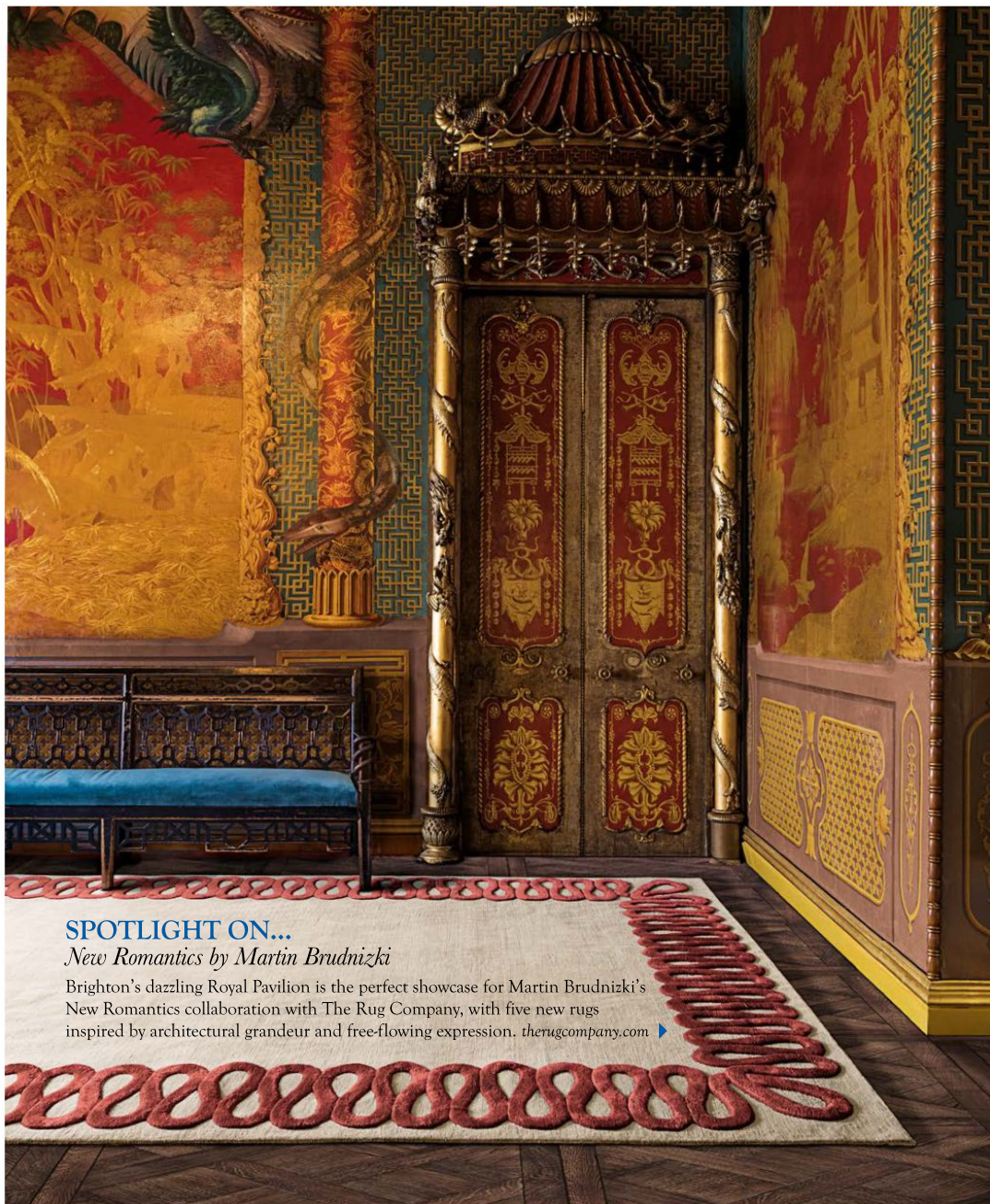
295 WILLESDEN LANE, LONDON, NW2 5HY  
TUBE: WILLESDEN GREEN (JUBILEE LINE)

[www.westlandlondon.com](http://www.westlandlondon.com)

TEL: 144 (0) 207 739 8094  
e-mail: [westland@westlandlondon.com](mailto:westland@westlandlondon.com)

# NOTEBOOK

Our monthly edit of news, shopping inspiration and inside information >



## SPOTLIGHT ON...

### *New Romantics by Martin Brudnizki*

Brighton's dazzling Royal Pavilion is the perfect showcase for Martin Brudnizki's New Romantics collaboration with The Rug Company, with five new rugs inspired by architectural grandeur and free-flowing expression. [therugcompany.com](http://therugcompany.com) >



## A Cinematic Retake

*Train carriage by film director Wes Anderson*

"I love trains!" says American film director Wes Anderson, who was asked by Belmond to reimagine Cygnus carriage aboard the British Pullman. "I've often had the chance to invent train compartments and carriages in my movies, so I was immediately pleased to say 'yes' to this real life opportunity, and very eager to make something new, whilst also participating in the process of preservation which accompanies all the classic Belmond train projects. They are keeping something special alive, igniting this endangered species of travel into a new golden era."

Greek God of Balance Cygnus, often personified as a swan, is referenced throughout his design, from the swan-shaped champagne coolers to the silver leaf on the ceiling that reflects like water, and intricate waves and swan detailing in the 360-degree hand-crafted marquetry that envelops the carriage. [belmond.com](http://belmond.com)



## Respect By Design

*Brodie Neill's meaningful new table*

Brodie Neill's new dining table ReCoil elegantly explores our relationship with the forgotten and the discarded. He spent 60 hours hand-coiling over three kilometres of veneer strips taken from six native tree species reclaimed from a Tasmanian forest flooded in the 1980s for a hydroelectricity scheme. He painstakingly arranged the strips to reference trees' annual growth rings.

Tasmania-born London-based Brodie says: "To change people's perspective of what waste is, or the potential within waste, is a huge task. It's difficult to shift the kind of heavily embedded views people have that waste, such as scrap veneers or plastics, cannot be of value or beauty or of any importance. It's through the vision and the application of a kind of innovative craft that those materials can be elevated, often far exceeding the pieces they were removed from." [brodieneill.com](http://brodieneill.com)



## Prints Charming

*Artist, designer & historian Rory Hutton*

Expressing his passion for art, architecture, history, theatre, opera and dance through lino prints in vivid colours, designer Rory Hutton lends his talents to both cultural and charitable organisations. Known for his beautiful, printed silk scarves, his clientele includes The Royal Opera House, The British Museum, The Royal Ballet, the Noël Coward Archive and charities such as Hands Up Foundation, for whom he designed a silk scarf (right) and pocket square. "I am greatly influenced by the working methods of William Morris and the Arts and Crafts movement," he says. "I enjoy the idiosyncrasies of the handmade, lino prints have a charm and liveliness that really appeals to me. I enjoy telling stories through my prints, interpreting heritage for contemporary audiences." [roryhutton.co.uk](http://roryhutton.co.uk) ▶





# ENHANCE THE VALUE

*and beauty of your home with real timber windows & doors*



Whether your home is a country cottage, a Victorian semi, a modern townhouse or a converted barn, we have a range of traditional and contemporary timber windows and doors that will complement it perfectly.

Our collection has been carefully and sensitively tailored to complement the English home. Unlike timber windows of old, our products will not twist, will not rot and require very little maintenance. High levels of insulation and security ensure there is no need to sacrifice beauty for comfort.

With **45** local showrooms nationwide we can provide the perfect environment to browse the many options available.

The Timber Windows service is delivered with care by knowledgeable local specialists whose reputation is built on providing an attentive service from initial enquiry to the completion of your project.

Please do get in touch to receive expert advice and to see how beautiful timber windows and doors really can enhance the value & beauty of your home.

AMERSHAM  
BIRMINGHAM (HARBORNE)  
BLANDFORD  
BOURNEMOUTH  
BRISTOL (CLIFTON)  
BURY ST EDMUNDS  
CARDIFF  
CARMARTHEN

CATERHAM  
CHANNEL ISLANDS  
CHELTENHAM  
CIRENCESTER  
COLCHESTER  
DENBIGH  
DULWICH  
ESHER

GUILDFORD  
HARROGATE  
HARTLEY WINTNEY  
HEATHFIELD  
HENLEY-ON-THAMES  
HEREFORD  
HIGHGATE  
HONITON

HORDEAN  
HORSHAM  
INGATESTONE  
KNUTSFORD  
LEAMINGTON SPA  
LINCOLN  
MAIDSTONE

MORETON-IN-MARSH  
NOTTINGHAM  
OLNEY  
OXFORD  
RIPLEY  
SALISBURY  
SHEFFIELD

SUNNINGDALE (COMING SOON)  
ST ALBANS  
TAVISTOCK  
TUNBRIDGE WELLS  
WIMBLEDON  
WINCHESTER  
WOODBRIE



T: 0800 030 2000

[www.timberwindows.com/eh](http://www.timberwindows.com/eh)





## Enduring Elegance

*Hazel Gardiner collaborates with Meri Meri*

Floral designer, gardener and broadcaster Hazel Gardiner's festive collaboration with partyware firm Meri Meri is elegantly exuberant featuring flower-festooned crackers and a reusable centrepiece of blooms.

Delicate paper poinsettias, astrantias, hyacinths and amaryllis adorn a chic seasonal centrepiece designed by London-based Hazel. Paper greenery includes eucalyptus, English ivy and oak leaves, some adorned with gold foil. It comes with an easy-to-assemble flat-packed box plus instructions on adding the pre-made flowers and leaves. Unlike fresh flowers, this centrepiece is a sustainable investment piece that can be re-used for years to come. A set of matching crackers topped with exquisitely crafted paper flowers completes the collaboration.

"I love traditional English flowers, but I also enjoy playing with unexpected colour combinations," says Hazel. "Depth and interest are created by fusing paper, silk and fresh stems. We've used our joint expertise to create a wonderfully unique collection enabling people to experience the beauty of nature inside their home year after year."

Meri Meri founder Meredith Stuart-Smith says she was "totally captivated" by Hazel's talent and designs. "This collaboration has given us a greater understanding of floral arranging and how we could translate our designs into paper," she says. "We wanted to find a way to make a table arrangement with paper flowers that could be collapsed for packaging – Hazel came up with a brilliant solution." [merimeri.co.uk](http://merimeri.co.uk); [hazलगardinerdesign.com](http://hazलगardinerdesign.com) ▶





JENNIFER  
MANNERS

LUXURY HANDMADE RUGS

DESIGN CENTRE CHELSEA HARBOUR

+44 (0)20 3903 3687

[www.jennifermanners.co.uk](http://www.jennifermanners.co.uk)

## The Art of Entertaining *Claridge's x Summerill & Bishop*

A chic new collaboration between iconic London hotel Claridge's and table linen mavens Summerill & Bishop celebrates the art of entertaining.

A generously oversized tablecloth and matching napkins made from 100 per cent pure linen are available in three distinct colourways: Black & White, as an ode to the historic hotel's famous checkerboard lobby, Sage Green and Powder Blue.

"Claridge's has been the quintessential host for over 150 years," says its general manager Paul Jackson. "This collaboration celebrates Claridge's place at the heart of hospitality with Summerill & Bishop's unique modern style, and the art of bringing people together around the table."

Summerill & Bishop CEO and creative director Seb Bishop says: "Claridge's is truly the epitome of timeless glamour and we're so proud to share this new table linen collection with friends who strive to be the best possible hosts just as much as we do."

[claridges.co.uk](http://claridges.co.uk); [summerillandbishop.com](http://summerillandbishop.com)



## Illuminating allure

### *Jo Malone London charity candle*

Fragrance house Jo Malone London is bringing the unmistakable scent of an English garden into the home with its new Elderflower & Gooseberry charity candle.

Vibrant and tart gooseberry adds an invigorating element to the powdery floral softness of elderflower, resulting in a fresh and inviting home scent.

Not only does this candle smell good, it does good too. For every charity candle sold in the UK and the Republic of Ireland, 75 per cent of the £50 price (less VAT) will be donated to inspirational charities supporting individuals and families affected by mental health problems.

All of the Jo Malone London charity candles from previous years - Lily of the Valley & Ivy, Peony & Moss, White Lilac & Rhubarb, and Iris & Lady Moore - are still available to buy, for £50 each or together in a box for £200, with 75 per cent (less VAT) donated to charity.

[jomalone.co.uk](http://jomalone.co.uk)

## Diary



A hundred years to the day since it was last seen in this country, Gainsborough's masterpiece *The Blue Boy* will return to the National Gallery on 25 January until 15 May 2022. [nationalgallery.org.uk](http://nationalgallery.org.uk)



In the first solo show of his work since his death in 1978, over 30 paintings by Bloomsbury Set luminary Duncan Grant are currently on display at Charleston in Sussex until 13 March 2022. [charleston.org.uk](http://charleston.org.uk)



The Design Museum exhibition *The Conran Effect* celebrates the life and work of its founder Sir Terence Conran and his impact on everyday life, from early furniture designs to his influential restaurants and the establishment of Habitat. Until 6 February 2022. [designmuseum.org](http://designmuseum.org) ■

FEATURE SARAH FEELY PHOTOGRAPHS #13 © THE BUG COMPANY #14 (TOP) © NICOLAS RECEVEUR & BELMOND; (MIDDLE) LEFT © MARK COCKSEDGE, RIGHT © ANGELA MOORE; (BOTTOM) LEFT © KRIS KESAJ, RIGHT © TOP DRAWER #16 (PORTRAIT) © SOPHIA SPRING, (REST) © MER MER; #18 (CLARIDGE'S) © CLARIDGE'S; (BOTTOM) FROM TOP: THOMAS GAINSBOROUGH 'THE BLUE BOY', 1770. © COURTESY OF THE HUNTINGTON LIBRARY, ART MUSEUM, AND BOTANICAL GARDENS, SAN MARINO, CALIFORNIA; DUNCAN GRANT, 'VENUS AND ADONIS', C.1919, TATE COLLECTION. © ESTATE OF DUNCAN GRANT; PHOTOGRAPH: TATE. © RAY WILLIAMS, COURTESY OF THE CONRAN FAMILY

# THE DORMY HOUSE

Handcrafted in our Hampshire workshop,  
we make furniture you'll love forever



10%  
OFF

use code  
EH0122

Expires 31<sup>st</sup> March 2022



**MADE IN  
BRITAIN**

**VISIT OUR SHOWROOM** Monday to Friday 9am–5.30pm  
The first Saturday of every month 10am–2pm | Other times by appointment  
The Dormy House, 27 Walworth Business Park, Andover SP10 5LH

**thedormyhouse.com | call 01264 365808**

# DESIGN DISCOVERIES

Traditional crafts, collaborations and nature mark this month's buys in colours, patterns and forms to brighten the home



## SHADES OF NATURE

Hand-dyed using flower and plant extracts to create a range of striking hues, the Botanical Textiles collection of homeware from faux and dried bloom-specialist Fox Flowers includes these delightful tea towels (left).

Tea towels, £24 each, Fox Flowers

## RURAL INSPIRATION

Drawing inspiration from countryside folklore, the Harvest collection encompassing furniture, fabrics, wallpaper and home objects is designer Beki Bright's first standalone outing following her recent Pentreath & Hall collaboration.

Backdrop, Harvest Fabric, Field Blue, £85 a metre; armchair in Apple Pickers, Rust, £1,500, both Beki Bright



## ANNIVERSARY DESIGNS

Featuring nine playful animals from British wildlife individually painted by hand in traditional Delft blue in the Majolica style, the launch of the Wilding collection from artisan company Marlborough Tiles recalls the joys of nature in celebration of the brand's 85th anniversary.

Wilding Collection, £34.50 a tile, Marlborough Tiles

## SET TO IMPRESS

The bold pattern and festive colourway of this elegant table linen created by interior designers Turner Pocock exclusively for online retailer The Sette is the duo's first homeware brand collaboration, and sees their hand-printed design transferred on to fabrics produced by a family-run enterprise in Italy.

*Red Stripe table linen (also available in Blue Dots), from £60, Turner Pocock x The Sette ▶*



## SHOPPING



### MODERN-DAY CLASSIC

Combining a British beech base and vintage-inspired muslin cotton shade created with the help of sustainable lampshade maker Alice Palmer, edit58's new lighting collaboration with Stroud-based Kelmscott Studio brings a classic Arts and Crafts feel to a contemporary piece.

*Ludlow lamp base and Alice Palmer Scrunchie lampshade, £400 (£245 base-only), edit58*



### ARTISANAL CERAMICS

The second instalment from designer Birdie Fortescue's seasonal collection, *The Wanderings*, continues to draw from a global travel inspired theme, and features this handcrafted tableware made in Horezu, the Romanian town famed for its pottery. *Romanian dinner plate, £39; side plate, £29; bowl, £19.50, all Birdie Fortescue*

### A PLACE FOR EVERYTHING

Be it to create a cosy corner for all members of the household, or simply to offer additional storage and a stylish touch, Neptune's latest collection features pieces to breathe new life into the home come the new year.

*Chawton low dresser in Moss, from £8,144; Audrey chair in Harris Tweed Olive, £1,580; Elgin large rug in Grey Oak, £900, all Neptune* ▶





Celebrating *50 Years* of fine quality designs, hand crafted by  
Haddonstone

Call 01604 770711 Visit [haddonstone.com](http://haddonstone.com)



**HADDONSTONE**



**PRETTY PRACTICAL**

Providing a neat storage solution that is also pleasing to the eye, this velvet-upholstered ottoman is a chic piece that elegantly combines the practical with the stylish. *Huxley ottoman in Iron Grey, £275, The Cotswold Company*

**ANCIENT DESIGNS REIMAGINED**

With geometric shapes and a striped block pattern inspired by ancient Inca textiles and Greek key forms, designer Brook Perdigon's Cusco wallpaper (below) forms part of four new wallpaper designs in her collection at The Fabric Collective along with Roma, Via Appia and Toile de Terrain. *Wallpaper, Cusco, Mist, £106 a metre, Brook Perdigon at The Fabric Collective*



**PAINTERLY BEDLINEN**

Embroidered pastel-like strokes of colour blend into this landscape bedlinen design in the new seasonal Plum colourway from specialist company Gayle Warwick Fine Linen, creating a peaceful backdrop for a soothing night's sleep. *Landscape bedlinen, from £290 for a pillowcase set, Gayle Warwick Fine Linen*



**ARTISTIC LICENCE**

As one of 12 emerging names selected by Partnership Editions to create artist-designed home objects for the accessible art platform's move into homeware, Swedish illustrator Petra Börner's contributions include hand-painted candelabras and candlesticks as well as these delightful ceramic discs. *Cactis hand-painted ceramic discs by Petra Börner, from £450 each, Partnership Editions* ■

FEATURE EVE MIDDLETON PHOTOGRAPHS P20 (MARBOROUGH TILES) © ADAM CARTER, (BEKI BRIGHT) © DEBORAH HUSK, P22 (BIRCH FORTESCUE) © MARY WADSWORTH, P24 (THE FABRIC COLLECTIVE) © MARIANNA JAMADI

# Tom Raffield

Making sustainable living beautiful



*Artisan homeware handcrafted in England.*  
[www.tomraffield.com](http://www.tomraffield.com)

## SHOPPING



The Classic Christmas Luxe, £36.50, Hotel Chocolat



Noel Mini Scented Candle set, £23.50, Oliver Bonas



Christmas wrapping paper, £3.50, Bluebellgray



Cashmere hot water bottle in Wedgewood, £115, Johnstons of Elgin

Lotus Pink Pure Cashmere bed socks, £35, SoakSleep



## LAST-MINUTE LUXURIES

Even the most organised may struggle to find something for tricky-to-buy-for friends and family. Here we suggest a number of indulgent presents anyone would be happy to receive, from soft cashmere socks to luxurious board games. For the person who has everything, a delectable hamper of cheese, a monthly delivery of flowers or a celebratory bottle of fizz are sure to delight.

Remember, too, to have a few little gifts such as delicious chutney, scented candles or special tea wrapped and ready to give to any surprise visitors...or perhaps even to keep...



Camel Valley English Sparkling wine, £29.95, Fortnum & Mason



Farm to Vase three-month subscription including one vase, £60, The Real Flower Company



Cartwright & Butler Boxing Day Chutney, £4.99, Museum Selection

Cotswold Cheese & Wine hamper, £100, Daylesford Organic



Jubilee Small Backgammon set, Aqua, £250, and Sapphire Classic Noughts and Crosses set, £150, both Noble Macmillan



Nalgora Antique Brass wine cooler, £60, Rose & Grey

Crimson Lacquered Twist candle, £4, Rebecca Udall



Muggins Blue Apron mug, £12, Loaf



Spiced Christmas tea, £4.15, Bettys



**BARNES**  
Of Ashburton Ltd

‘We don’t just make kitchens! Our interior design service extends to any room in the house. From bedrooms to lounges, boot rooms to home office projects.

24A West Street, Ashburton, Newton Abbot, Devon TQ13 7DU  
Tel: 01364 653613 • [www.barnesofashburton.co.uk](http://www.barnesofashburton.co.uk)

AGA  
SHOWROOM



## SHOPPING



Retro Daisies Embroidery craft kit, £25, Stitch Happy



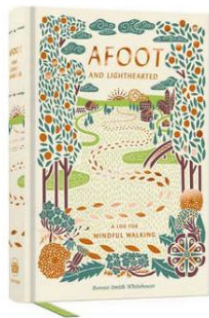
Portland collection of storage baskets, from £12, and other items, Garden Trading



Large insulated lunchbag in a variety of sustainable fabrics, £29.95, SoYoung at Pasoluna



Sima paint, £42 for 2.5l Flat Matt, Coat Climate Positive Paint Company



Afoot and Lighthearted: A Mindful Walking Log, £13.99, Oh Curio

## GOOD INTENTIONS

The ritual of making resolutions in the new year is often followed swiftly by the breaking of such promises. Make things a little easier with buys that will help with those vows...whether they are to be more virtuous or indulge in a little more 'me time'. Perhaps learning a new skill is on the agenda, or simply getting round to a decorating job, or rearranging the furniture and having a thorough spring clean. Sustainable or eco-friendly purchases will help with pledges to consider the environment. Of course, a stylish juicer will make healthier choices more enjoyable.



Pastel Green citrus juicer, £139.95, Smeg



Paper Marbling online workshop and kit, £75, Nat Maks



Torino leather-clad tape measure, £40, Jonathan Adler



Luxury bespoke Scottish wool bed pillow and additional filling, £89, Ava Innes



King size headboard, £495, Sustainable Furniture Collection, Rockett St George



Spa Retreat collection, from £10, The White Company



Fairies in the Garden children's bamboo toothbrush, £3.95, Rex London



Chattra Block Print Yoga Mat Bag Citron Marigold, £49.50, Bombay Duck

FEATURE KATY MCLEAN  
© JOHN PAUL PHOTOGRAPHY



**SAVE  
15%**  
WITH CODE  
EH15

Cromer Dress £45  
More Colours Available

# *Kit and Kaboodal*

STYLISH LADIES CLOTHING

THE HOME OF MADE IN ITALY ★★★★★ TRUSTPILOT

WWW.KITANDKABOODAL.COM | 01423 325725

# THE EDIT

Editor-at-Large Kate Freud tells the story behind a range of brands with roots in England this month, from luxury lighting to showstopping beds



## CHARLES YORKE KITCHENS

Set in the heart of Nottinghamshire, where Sherwood Forest has long been the subject of folklore and woodland tales, what better place to find luxury bespoke kitchen brand Charles Yorke Kitchens, which relies on sustainable British wood for its business.

Since the company began more than 20 years ago, it has prided itself on creating kitchens, bedrooms and cabinetry that is as individual as the people buying it. Once Charles Yorke has a full brief and the room has been designed, its craftsmen combine traditional cabinetmaking with state-of-the-art technology to create a kitchen that is built to last. These days the company even provides everything from personalised doors and handles to dining chairs, wooden flooring and tiles.

Sustainability is at the heart of what Charles Yorke does, selecting only the finest materials from sustainable sources with a large variety of woods to choose from. In addition to this, rather than creating landfill, the wood it does not use fuels a biomass boiler which generates heat for the workshops and to dry paint. [charlesyorke.com](http://charlesyorke.com)



## KNOTS RUGS

Rooted in three generations of interior understanding, founder of Knots Rugs Bonnie Sutton applies her innate knowledge of the creative process together with her dedicated team, from artist to weaver, to push the boundaries of contemporary rug designs.

Knots Rugs collections span a wide range, from traditional Persian palace to pure and simple to more abstract designs, such as its new collaboration with American modern artist Brian Coleman.

Since its founding in 2007, Knots Rugs has gone from strength to strength, opening a shop in Chelsea in 2011 and producing momentous pieces for a variety of clients. Made from Highland Tibetan wool, these sophisticated, high-quality rugs adorn many residential and commercial projects and easily assimilate into the nature of an English home. [knotsrugs.co.uk](http://knotsrugs.co.uk)



Give a subscription this Christmas  
**THE PERFECT GIFT**  
**FOR FAMILY & FRIENDS**

The

**ENGLISH HOME**

20  
 years  
 ANNIVERSARY

*Celebrating the essence of English style*  
 December 2020 | Issue 190 | £4.99 | UK Edition

THE GIFT  
 THAT LASTS  
**ALL YEAR**



**MAKE IT MAGICAL**

Decorating ideas for seasonal sparkle

**SETTING THE SCENE**

Personal insights from  
 designers Joanna Wood,  
 Susie Watson and more

**SEASONAL FLA**  
 Elegant entertain  
 Flowers &

**PERFECT PRESENTS**

- Handmade
- Thoughtful
- Brilliant buys
- Luxuries

**COSY CHRISTMAS**

FIVE beautiful homes dressed for comfort & joy



**Plus FREE**

Delphinium body  
 wash and lotion  
 worth £30\*

Free gift to keep for yourself or give to your friend

**SAVE  
 UP TO  
 28%**

UK	EUROPE	AUSTRALIA	REST OF WORLD	USA & CANADA
£42.95	€71.95	AUD \$109.95	£63.95	USD \$81.95

Order online: [www.chelseamagazines.com/CENHXT21](http://www.chelseamagazines.com/CENHXT21)

Call: +44 (0)1858 438889 (quote CENHXT21)

\*Free gift available for subscriptions delivered to the UK mainland only. Your free gift will be delivered within 28 days to the bill payer's address. All gift subscriptions will start with the first available issue published after 25 December. Free gift is subject to availability, we reserve the right to exchange for an alternative item. Prices displayed are for a one year (12 issues) subscription, discount calculated from UK cover price.



## PORTA ROMANA

Luxury lighting and furniture brand Porta Romana has come a long way since its humble beginnings in a tiny London workshop back in 1988. Right from the start, the brand wanted to create pieces that people would love and treasure, and

today it has garnered a reputation across the world for just that. Creating inspiring and beautiful pieces with a practical purpose.

Porta Romana continues to work with exceptional British craftspeople to create its lighting, which is used in beautiful houses, yachts and hotels across the world, and even movie sets.

Porta Romana's new collection boasts several very different styles, including the Spry (left), a riot of entangled metalwork inspired by dried plants and flowerheads, with dragonflies and bees hidden within. Also new is the delicately beautiful porcelain Aubrey ceiling light, which is adorned with decorative detailing and supports three small birds, about to take flight in all their grace. [portaromana.com](http://portaromana.com)



## LINWOOD

Though Linwood has only been around for a relatively short time in the world of interiors – 25 years – it has managed to establish itself a reputation as a brand that straddles both classic and contemporary design. By drawing inspiration from the natural world, textile archives and museums, its range of fabrics and wallpaper really do have something to offer everyone.

The family-run business, based in Hampshire, has an in-house design team that skillfully creates Linwood's collections

of prints, weaves and wallpapers, with each design still drawn and painted by hand.

Whilst most of what Linwood produces is made in the UK, it has also cherry-picked a handful of well-known European mills, which bring with them their own generations of experience.

Linwood's latest collection, The English Garden, is exquisite in detail and encompasses five designs packed full of florals printed onto soft linen. (To see more of the collection, turn to page 84.) [linwoodfabric.com](http://linwoodfabric.com)



## SAVOIR

Having started life producing beds for the Savoy hotel in the early twentieth century, today Savoir has a range of four staple bed designs, all handmade in the UK.

The meticulous production process begins with a showroom consultation to ensure the design is tailored to a client's needs. Then each mattress is allocated to a craftsman who sees the process through from start to finish and, upon completion, signs it, just as an artist would sign a piece of their own art. This truly bespoke process is underpinned by natural materials combined with traditional, handcrafted techniques to ensure each bed stands the test of time.

Savoir makes fewer than 1,000 beds a year to maintain its high standards and, along with its refined range of beds and mattresses, offers luxury toppers and linen, encouraging an altogether relaxing sleeping experience. [savoirdesign.com](http://savoirdesign.com) ■

# AN ALBION BATH TAKES A LITTLE LONGER



Apollo Bath - Choose 1770 or 2000mm long

Stay warmer in an Albion bath as our Iso-Enamel material will keep your water hotter for longer - and at less than half the weight of cast iron, an Albion bath is easier to locate and install.

With a range of free standing baths from 1200mm - 2000mm long, we've got all sizes of bathroom covered.

Made by hand in our Essex factory, all Albion baths are manufactured to order - so in both ways, an Albion bath takes a little longer.

Request your brochure of our range of over 50 free standing bath tubs, taps and sanitaryware items.

01255 831605  
[albionbathco.com](http://albionbathco.com)

## ALBION

BATH COMPANY

HAND MADE IN ENGLAND



# *Understated* CHRISTMAS

Justin van Breda has created an elegant London oasis with muted colours and subtle nods to his South African heritage, perfect for a relaxed festive season

FEATURE CLAIR WAYMAN  
PHOTOGRAPHY RACHAEL SMITH



**ABOVE** Justin standing in his light-filled London drawing room.  
**LEFT** The rattan mirror and urn are from Justin's Cape Weaver Collection and were designed together with Nina Campbell and handwoven by the society of the Blind in South Africa. The White Berry Cypress faux garland from Balsam Hill has been embellished with fresh foliage and oranges.



*'I wanted to create a tranquil sanctuary, where friends can walk through the door and feel like they're stepping back in time'*

**ABOVE** The striking sculpture of Africa, made with paperback books, is by Keri Muller and the blue-and-white plates are by Michael Chandler, both South African artists. The Cross Back dining chairs, from the Justin Van Breda collection, are covered in William Yeoward fabric.

**C**hristmas has a special significance for London-based, South African-born interior designer Justin van Breda. As a child, he would spend the festive period on the family farm in South Africa, with everyone sitting down for a traditional Christmas lunch, then heading to the beach for a swim afterwards. With his birthday falling on the 23 December and his father's on the 24 December, there would always be a big celebration. "The highlight for me was choosing a tree on the farm, then bringing it into the house and decorating it on my birthday," he recalls.

Nowadays, Justin lives in a nineteenth-century townhouse in Kensington with his husband Alastair

Matchett and their Labradors, Margot and Maude. A neighbourhood drinks party usually kicks off the festivities, and Alastair's stepmother and half-sister often help prepare Christmas lunch. "We're all capable cooks – we make it as fun and fuss-free as possible," says Justin.

When decorating the house for Christmas, Justin enjoys trying different looks each year. "This year I've gone for a muted, elegant, organic feel, with lots of natural textures. I wanted the decorations to feel tailored, but also warm and inviting," he says. In the dining room, the table is layered with beautiful linen, silverware, crystal glasses and Limoges china, whilst, in the drawing room, a luscious garland of fresh, scented ▶



Cabinetry, painted in Sanderson's Indigo Blue, with handles by Armac Martin, contrasts with the Carrara marble splashback and work tops. Above the open shelving are customised Jim Lawrence Club wall lights. The beaded palm tree candleholder, made in Cape Town, is available from Marguerite Mavros Macdonald.



**ABOVE** The Justin van Breda Octagonal ottoman, with leopard print detailing, and the giraffe print cushion fabric from Clarence House, add a subtle African feel to the drawing room. The smallest of the trio of tables was designed by Justin's South African friend, Jean-Pierre de la Chaumette. To see Justin's furniture collection and interior design work visit [justinvanbreda.co.uk](http://justinvanbreda.co.uk)

**RIGHT** Justin and Alastair added a fourth floor to their Victorian townhouse to create additional bedrooms and a shower room.

yew and bay, accented with oranges, is draped organically above the fireplace.

Prior to their move to the townhouse, Justin and Alastair had been living in a flat. The catalyst for finding a new home came in the form of an adorable Labrador puppy: "I gave Margot to Alastair as a surprise 40th birthday present in 2009. He jokes that she was the most expensive dog ever because we ended up having to buy a house with a garden," says Justin.

When looking for a property, the couple opted for West London as it provided the quickest route to their Gloucestershire country house. They moved into their new home on 30 November 2009, a date that will always be etched on their memories because it is when Justin proposed to Alastair. "I didn't get down on one knee or have a ring, but he did say yes. It was such a significant day for both of us," he says.

The early Victorian terraced house, built in 1840, whilst full of charm, with pretty period features and a sizeable garden, had not been updated for decades. "We lived in the house for two years before renovating. It hadn't been rewired for 35 years; every time I turned on the bathroom light I got an electric shock," Justin explains. "It was leaking, needed new windows, new ▶





This year Justin and Alastair's Christmas tree is tailored and natural, with hydrangea heads, green baubles, gold ribbon, gold-sprayed branches of yew, fresh sprigs of bay, and glass tea light holders. The Nordmann Fir faux Christmas tree is from Balsam Hill. The Broadwood piano came from Lots Road Auctions.



**ABOVE** Labrador Margot settles into her comfy rattan dog bed for a nap. Designed with Nina Campbell for Justin's Cape Weaver collection, the dog bed was handwoven by the Society of the Blind in South Africa.

**BELOW** Rich red silk fabric draped around the bannister creates a dramatic effect. To keep things simple, Shaded White by Farrow & Ball has been used throughout the hall. The original stained glass door leads to the study.



heating, new plumbing, a new boiler. It needed a complete overhaul.”

The building work commenced in 2011 and over a period of nine months the house was gutted and transformed. A fourth floor was added at the top of the house to include two more bedrooms and a shower room. The formerly split-level lower ground floor was made all one level and enlarged with a spacious, light-filled extension, incorporating a kitchen and dining area, opening on to a peaceful garden. Parquet flooring was laid throughout the lower ground floor, whilst upstairs the original, well-preserved floorboards were stained a dark brown for a contemporary look. The two rooms on the upper ground floor were





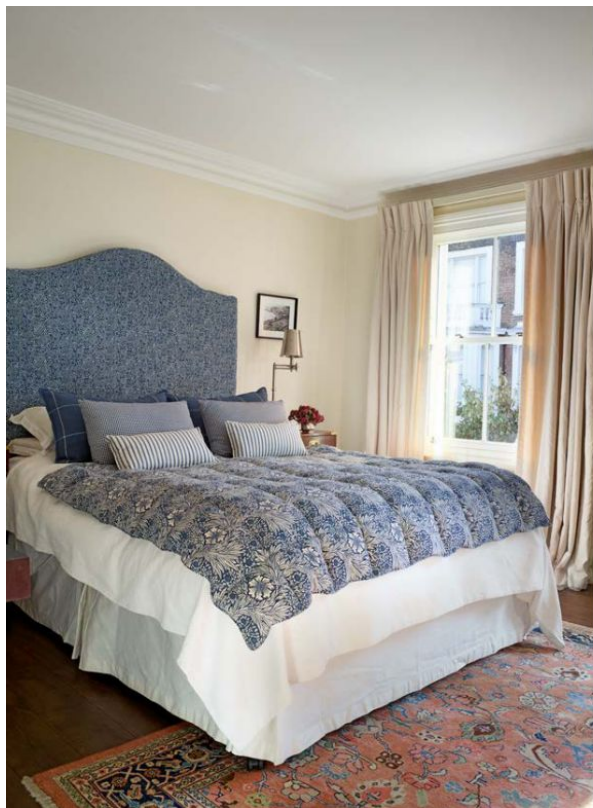
*'There are areas to sit and have a conversation, read a book, play the piano, relax. It's very much about being calm and quiet'*

opened up to create a single, light-filled living space and period details were restored throughout.

As the house is in a conservation area, the couple had to compromise on the type of extension they were allowed to build. "We would have loved to have gone straight across, with the side return and kitchen extension being one line, but I think the stepped extension has actually given the house more character and worked out better," says Justin.

The stylish and practical kitchen was designed by the couple, and has been such a success it will soon be replicated in their country house. "We sketched the kitchen on a napkin whilst on holiday in Cornwall - our inspiration was the 'below stairs' feel of old country house kitchens," explains Justin. "The row of wall lights that I chose are inspired by servants' bells and the open shelves were Alastair's idea, as he likes to have easy access to everything in the kitchen." ▶

ABOVE The cosy snug on the lower ground floor includes an Inkwell rug from The Rug Company. The mock crocodile leather hat box which acts as a side table was made bespoke.



*Warm whites and rich indigo blues link the spaces, whilst layers of subtle animal prints and textural elements add interest*

Creating a common thread throughout the house are Justin's treasured African pieces: drawings of his family farm hang in the snug, an origami sculpture of Africa made from old paperback books by artist friend Kerri Muller hangs on the wall next to the dining table, and beaded candlesticks crafted by Cape Town artisans add whimsical charm. Carefully curated pieces from Justin's own furniture collection bring a classic elegance to the spaces. Taking pride of place in the drawing room are a striking rattan mirror and urn, the results of a collaboration between Justin and interior designer Nina Campbell, and part of the Justin van Breda Cape Weaver Collection.

Having always had a deep appreciation for well-made, handcrafted African furniture, Justin curated a selection of his favourite designs and showcased them in the first JVB shop he opened in London, on Pimlico Road, in 2002. He later began designing furniture himself, and has since moved his showroom to the King's Road, where an impressive range of furniture is displayed, most of which nods to his South African heritage.

Both Justin and Alastair have fast-paced working lives, so it is important for them to have a relaxing retreat where they can unwind, spend time together and entertain friends. A sense of calm pervades their home, with a pared-back palette of warm whites and rich indigo blues linking the spaces, whilst layers of subtle animal prints and textural elements add interest. "I wanted to create a tranquil sanctuary, where friends can walk through the door and feel like they're stepping back in time, where clocks tick a little slower, and they can linger," Justin says. "There are areas to sit and have a conversation, read a book, play the piano, and relax. It's very much about being calm and quiet."

It is clear to see how proud both Justin and Alastair are of their home. It has been over 12 years since they first stepped over the threshold and they have no plans to leave their peaceful enclave. Locals gather at the cosy pub at the end of their tree-lined street, and around the corner pretty boutique shops entice window shoppers. "It's wonderful here," Justin says. "It's like a tiny village - we know all our neighbours. It's a very special place to live." ■

**ABOVE LEFT** In the master bedroom, Justin has combined a bespoke quilt cover in a William Morris fabric with a co-ordinating pattern from Carleton V on the headboard.

**ABOVE RIGHT** Taking pride of place in the main bathroom, the exterior of the freestanding bath from Heritage Baths has been painted in French Gray by Farrow & Ball. A Roman blind made in Bennison's subtle Acanthus Leaf fabric adds interest to the tranquil space.



BY APPOINTMENT TO  
HER MAJESTY THE QUEEN  
BED MANUFACTURERS

WROUGHT IRON AND BRASS BED COMPANY LIMITED  
NORFOLK

# Wrought Iron and Brass Bed Co.

Handmade in Norfolk | Guaranteed to last a lifetime

## WINTER SALE starts December 27th

view our full range at

[www.wroughtironandbrassbed.co.uk](http://www.wroughtironandbrassbed.co.uk)



# *Hidden gem*

After taking a chance and moving to Gloucestershire, Georgie Pearman discovered an enchanting country house with a wealth of period features and an intriguing history

FEATURE CLAIR WAYMAN PHOTOGRAPHY DAN DUCHARS  
STYLING CLAIR WAYMAN & SARA BIRD STYLING ASSISTANCE CHAMIL LIYANAARACHCHI



A faux Eucalyptus garland from Neptune, enhanced with foliage by The Curator London in Stroud, and an Arlberg Fir faux Christmas tree from Lights4Fun are a welcoming sight in the atmospheric entrance hall. Baubles from John Lewis and wrapping paper from Neptune and The Danes complete the festive scene.



**ABOVE** The characterful antique chest of drawers in the drawing room is from Original House. Candles, candlesticks and brass trays from The Danes add a festive feel.

**LEFT** Two large Victorian wings flank the original seventeenth century section of the house. For more information on Georgie and Sam Pearman's pubs and inns, visit [countrycreatures.com](http://countrycreatures.com)



*'I was charmed by its wealth of period features, the ornate fireplaces, decorative stained glass and stunning views'*

Completely hidden from view by tall trees, with an unassuming entrance, Georgie and Sam Pearman's country house near Stroud in Gloucestershire is easy to miss. Once through the front door, however, it feels like stepping straight into an enchanting children's fairy tale.

The softly lit entrance hall, with its 1920s chequerboard tiled floor and rich, moss green walls, is in the original seventeenth-century part of the house, at the core of the property. Providing a focal point here is an Arts and Crafts carved stone fire surround bearing the inscription 'East, West, Home is Best' –

a poignant reminder that wherever we travel in the world, there is no place like home.

This central part of the house is flanked by impressive Victorian additions which encompass two large reception rooms. Upon entering the drawing room, the eye is drawn up to the decorative ceiling with its flamboyant mouldings and rosettes, a trademark of the local Victorian architect who worked on the property. Huge stone mullion windows look out over a tranquil vista of sweeping lawns.

Georgie first came across the rambling Cotswold stone property when visiting friends and was instantly ▶

**ABOVE** The drawing room, with its ornate ceiling, is in one of the Victorian parts of the house. Cushions from Oka fill the sofas and a John Lewis faux red berry garland embellished with fresh foliage adorns the mantelpiece.

Georgie has created an inviting feel in the kitchen with lots of greenery and an eclectic mix of paintings picked up from antique shops. The print of a warrior was from an exhibition at the Tate Modern. The Shaker-style kitchen is painted in Pigeon by Farrow & Ball.





*‘We’ve incorporated family heirlooms and pieces collected over the last 20 years from London and our travels to India, Asia and Africa’*

spellbound by its beauty. “The house was owned by friends of ours, and our children went to school together,” Georgie says. “Our daughters used to meet for play dates at the house and every time we visited, I was charmed by its wealth of period features, ornate fireplaces, decorative stained glass and stunning views.” In an interesting twist of fate, in 2012 the couple’s friends moved to America and Georgie and Sam found themselves renting, then buying the country house.

Having both lived in London for 20 years, Georgie and Sam were drawn to Gloucestershire when they were asked to redesign and run what was then the Bibury Court Hotel. The timing was perfect: Georgie was ready to leave her job as a busy lawyer and Sam, a former professional rugby player, was moving into the world of hospitality, fulfilling his dream of owning a restaurant. “The opportunity came up and we just took the risk,” says Georgie. “We hadn’t planned to move to the country, but when we were offered Bibury Court we thought it would be a fun experience, and it proved to be the start of our career as hoteliers.”

In 2017 the couple founded Country Creatures, a collection of three beautifully designed pubs and inns in The Cotswolds. They are also directors of Cubitt House, a group of iconic pubs and rooms in London.

Over the years, the couple have gradually introduced their relaxed, bohemian style to the house’s interiors, but Georgie admits that decorating their own home is a far cry from designing interiors for the hospitality industry. “Creating a family home isn’t like designing hotels or restaurants, where you start from scratch, create mood boards, have a budget and time-frame. Here, the interiors have evolved organically over time. We’ve incorporated family heirlooms and pieces collected over the last 20 years from London and our travels to India, Asia and Africa.”

A comfortable mix of new and antique furniture, art and vintage textiles sit together happily. This natural, unpretentious feel seems ideal for a country house that is described by Georgie as a “classic Cotswold Hotchpotch, made up of various periods and styles.” Georgie’s love of atmospheric greens and blues ▶

**ABOVE** The dining room is another 1850s addition and was built for entertaining on a grand scale. Georgie hosts a big Christmas lunch for all the family every year and decorates the table with branches of fresh cedar, eucalyptus, holly berries and cyclamen. The walls are painted in Stiffkey Blue by Farrow & Ball.



**ABOVE** The chequerboard tiles and staircase were added to the seventeenth-century hall in the 1920s. Framed vintage copies of French magazine *Lyon* hang above the chunky slate and wood table from Original House. The saffron Bayswater vase is from Neptune. Mince pies are from Bettys. **LEFT** Ron, the family's spaniel, sits under a pretty wreath made by The Curator London in Stroud.

is evident throughout the house. The dining room is painted in an enveloping indigo blue that sets off the warm glow of candles, whilst the drawing room is a subtle sage green that allows its period features to sing. "We wanted to enhance the wonderful mouldings, so we chose Pigeon, a muted hue from Farrow & Ball," says Georgie.

Having always lived in draughty old houses with creaky floorboards, Georgie was unfazed when moving here. "The beauty of old houses is that they have such a rich sense of history and bear clues of different families that lived there in the past," she says. Georgie has discovered that the house once belonged to Henry Wyatt, who was involved in successfully campaigning for the abolition of slavery in 1833 and went on to build an arch just below the house to celebrate this achievement. Then in the late nineteenth-century it was home to MP and industrialist George Holloway, after which it became a boarding school. Some bedroom doors still feature dormitory nameplates.

On winter evenings, the house really comes in to its own. Perched high on a hill, with large storm lanterns flickering with candlelight, the house looks and feels as it might have done in centuries gone by. During the festive season every mantelpiece is covered with ▶



**ABOVE** In this attic bedroom, shades of warm yellow and green create a cosy feel. The hand-stitched vintage kantha bedcover was picked up on Georgie's travels in India. The pair of lampshades are from Pooky and the Marcine cushion on the armchair is from Oka.



**LEFT** Georgie has created a fresh palette of turquoise, white and pink in the master bedroom with a pair of chests painted in Blue Verditer by Little Greene tying in with Mindoro cushions from Oka. The bed is from The Big Bed Company with a headboard covered in a striped fabric from Ian Mankin. The floral metal wreath on the chest is from The Danes and the gold tray on the bed is from John Lewis.



garlands and Christmas trees sparkle with red and gold decorations. Working in the hospitality trade means it is rare for the Georgie and Sam to take time off. "Christmas is lovely because for one day we are at home with the children and the extended family, doing absolutely nothing, except cooking for about 20 people!" laughs Georgie. Having happy memories of her own childhood Christmases, Georgie carries on some much-loved traditions. "We always have Swiss fondue on Christmas Eve when everyone arrives, which is something my parents used to do because it's an easy way to feed a lot of people," says Georgie. "Then on Christmas Day everyone congregates in the formal dining room for a delicious lunch of turkey, Christmas pudding and copious amounts of wine."

Moving to the Stroud valleys has definitely been a life-affirming decision for the Pearmans. "There's a great community spirit here, with lots of independent shops and the famous farmers' market," Georgie says. The area is full of artists, writers, film makers, actors and musicians, all doing interesting things. We feel perfectly at home here now and are so glad we took the leap of faith." ■

**ABOVE** Curtains in French Toile Berry Red by Cabbages & Roses bring warmth and charm to the guest bathroom. A handy side table provides somewhere to set a drink and a candle or two. The Heddon candlesticks are from Neptune.

**RIGHT** In this bedroom an Indian kantha throw from Georgie's travels has been teamed with a John Lewis Rye Knit throw and Pattani Eclipse cushions from Oka.



# LENNOX CATO

ANTIQUES & WORKS OF ART  
Est. 1978



1 The Square, Church Street, Edenbridge, Kent TN8 5BD  
T: +44 (0)1732 865988 M: +44 (0)7836233473



[www.lennoxcato.com](http://www.lennoxcato.com)



## FUSION

Blend your finishes



[soholighting.com](http://soholighting.com) | 0208 106 1221



JUSTFABRICS

Made to Measure Curtains and Blinds  
[www.justfabrics.co.uk](http://www.justfabrics.co.uk)  
01242 388390

Over 10,000 Reviews  
★★★★★  
★ Trustpilot



The building is Grade II\* listed with the star awarded to the Bressumer beam – the main load-bearing beam that crosses the living room in front of the fireplace. The Inglenook fireplace is a cosy focal point, flanked by an Eames Lounge Chair.



# Turning on THE CHARM

A mix of antiques, brocante and contemporary classics makes this Tudor hall house a wonderfully atmospheric home to celebrate the festive season

FEATURE & STYLING SARA BIRD  
PHOTOGRAPHY DAN DUCHARS / GAP INTERIORS



The house dates back to the fifteenth century and would have originally been single storey with a thatched roof. The upper floor would have been added in the 1600s.

RIGHT The front door is not original but it is certainly a few hundred years old.



**LEFT** Roberta by the warm wooden panelling in the dining room.

**OPPOSITE TOP LEFT**

The couple inherited the kitchen with its terracotta tiled floor, butler's sink, bread oven and bright red Aga. "I found it quite a challenging room at first," explains Roberta, "but we decided to embrace the farmhouse style and go with it."

**OPPOSITE TOP**

**RIGHT** The dresser was an online auction purchase, spotted by Roberta's mother – the original treasure hunter.

Old buildings have such an appealing solidity, that sense that they have always been there and always will be. Such a timeless quality can be a real blessing over the festive period, as well as when two contrasting decorating styles come together in one home, which is certainly the case with Roberta Ashley and Zefa Mongan. Brocante lover and owner of online vintage treasure trove Hunt The Pearl, Roberta likes nothing more than scouring antiques fairs for the whimsical, historical and kitsch. Interior architect Zefa, meanwhile, favours mid-century furniture and a more pared-back approach. This combination really comes together at Christmas, as natural elements are added and quirky decor sits alongside decorations.

Starting a family made Roberta and Zefa consider where they lived and how. "We were working and living in London but knew we wanted to raise our child in the fresh air and the countryside," says Roberta. "We started our search in Kent as it's a straightforward commute and is where my family live." ▶



The couple loved the existing Fired Earth tiles and repainted the cabinetry in a rich dark shade mixed to match at the local decorator's centre.



The dining area has an eclectic mix of furniture. The table came from a big antiques warehouse just outside Hastings and Roberta has mixed old school chairs with modern designs from Vitra and Conran. The couple fitted simple globe wall lights all over the house having seen them work well with panelling at a hotel in Shoreditch.



*‘We had looked at a few houses from the Tudor era. This house grabbed us because the openness works well for modern life’*

It was minimalist Zefa who found this Wealden hall house in a pretty Kent village, close to the church and pub and overlooking the green. “We were after something unusual and inspiring, and had looked at quite a few houses from the Tudor era, but most were dark with lots of small rooms,” says Roberta. “What’s different about a Wealden hall house is that these buildings consist of an open, spacious hall with two rooms to the side. The design is specific to the Weald – the area that runs between the South and North Downs, though Kent, Surrey, Sussex and Hampshire – and this house grabbed us straight away because that openness works so well for modern life.”

Dating from around 1475 and Grade II\* listed, the house was generally sound thanks to careful repair and restoration during the 1950s and ’60s. The owners at that time had bought the hall as two cottages and converted them back into a single dwelling. “We really are reaping the benefits of their work. They installed all the beautiful wood panelling, salvaged from a pub, laid the flooring and restored all the oak windows,” says Roberta. “It was all done to a such a high standard that it still looks great today, nearly 60 years on.”

Roberta and Zefa moved in at the end of 2017, just weeks before their son Rudi was born. They quickly set

to work updating key areas and addressing the lack of heating. “When we first had Rudi, I practically lived in the kitchen, by the heat of the Aga, as I just couldn’t manage a new baby and stoking fires in the three stoves,” explains Roberta.

Parts of the existing decor influenced the couple’s design decisions. They painted the cabinets in the kitchen a darker shade to match the fabulous Fired Earth tiles that were already there. Elsewhere, the dated mint green bathroom has been repainted in dark rich shades, the existing bath re-named. “The house has dictated a lot of the colour choices,” explains Roberta. “I see people renovating Victorian or Edwardian properties on Instagram and they really are blank canvases – you can paint them any colour you want. But you can’t do that with this house. Not many colours work in between beams, and things tend to be white or fairly light because the house is dark. You can embrace the darkness to a point but you do need to see where you’re going,” she adds. “The wood panelling is a limitation and joy in itself.”

One space that really comes into its own is the generous open-plan sitting and dining room. Roberta and Zefa have arranged it with the sofa nestled around the inglenook fireplace and the dining area at the ▶

**ABOVE LEFT** Special occasions such as Christmas give Roberta free reign with her vintage chinaware collection, which gets an extra layer of greenery, candles and fairy lights to add twinkle.

**ABOVE** The oak windows were all restored by previous owners in the 1960s and Roberta and Zefa have added thermal roller blinds to cut heat loss in winter. A generous armoire provides storage in the dining area and was a great find at Three Angels in Hove.



The tongue-and-groove in the bathroom is painted in Farrow & Ball's Paeon Black. A rug from John Lewis completes the bohemian look.



## Come Christmas, Roberta likes to use natural materials such as spruce boughs and pine cones, along with traditional decorations

**TOP LEFT** A guest bedroom was a walk-through between master bedroom and bathroom so the couple changed it into a dressing room. The walls are painted Tanner's Brown by Farrow & Ball.

**ABOVE LEFT** The dressing room has a dark boudoir feel but painting the floorboards white introduces some welcome light.

opposite end. "We love that you can sit on the sofa and look through the garden room out onto the garden - that view was so important to us," says Roberta. "And we have the French windows too. I don't understand living spaces where you can't just walk out into the garden. In summer, they are open all the time."

The sitting room is a wonderful mix of the duo's personalities. Designer furniture from Zefa's collection punctuates the space whilst layers of detail and from Roberta's stash highlight the nooks and crannies. In one corner, cupboard-like doors reveal a winding staircase up to the first floor and the couple's bedroom which extends right up into the eaves. What was an awkward adjoining bedroom is now a dressing room, leading to the bathroom, and there is great play here with the light and dark, with a white floor holding the

bold contrasts together. There is also a shower on the upper level, along with Rudi's bedroom.

Come Christmas, Roberta likes to use natural materials such as spruce boughs and pine cones, along with traditional decorations and the twinkle of lights in and amongst her year-round displays. "We don't go over the top - we're quite understated really," she says. Many of their perennial decorative pieces - the religious icons, plentiful plants and coloured glassware - are an easy fit at this time of year so the house never looks bare come January.

"When we started our house search, Zefa said the only thing he didn't want was a house full of dark beams and low ceilings and that's exactly what we've got," laughs Roberta. Their home has turned out to be an amazing backdrop for the things they both love, and every bit the inspiring home they hoped for. ■



The previous owners used this room as a second living room but it makes a striking master bedroom. The upper parts of the bedroom wall are original wattle and daub which are protected. They can be limewashed but not painted. Plants play an important role throughout the house. "I love big houseplants and we have plenty of space for that," Roberta says.



*Cause for*  
**CELEBRATION**

Trevor Pickett shows that Christmas can be both decorative and sustainable in his much-loved eighteenth-century Suffolk cottage

FEATURE AMANDA HARLING PHOTOGRAPHY ANDREAS VON EINSIEDEL



A palette of blue-grey, chocolate brown and rich ultramarine paired with subtle textures and patterns creates a cosily sophisticated version of the country look. The focal point is a simple yet elegant fire surround made to Trevor's own design and painted white.



*‘Once I’m on the road, I breathe a huge sigh of relief.  
There’s nowhere I’d rather be at Christmas than in Suffolk’*

**TOP LEFT** The pretty eighteenth-century red-brick cottage is typical of East Anglia.

**ABOVE LEFT** Trevor is always on the lookout for foraged finds to decorate the cottage at Christmas.

**ABOVE RIGHT** Pheasant feathers in russet and chestnut tones add a rustic flourish to the wreath.

**T**revor Pickett, the *eminence grise* behind Pickett – one of London’s tiniest and most stylish accessory brands – fully deserves a relaxing Christmas break. “Both our shops stay open until the afternoon on Christmas Eve, when we’re usually busy until closing time with those lovely customers who leave things to the last minute or realise they’ve forgotten to find a gift for their Christmas hostess,” he says.

As soon as the ‘Closed’ sign is on the door, however, Trevor makes tracks for his weekend country cottage in Suffolk. “Once I’m on the road, I breathe a huge sigh of relief. There’s nowhere I’d rather be at Christmas

than in Suffolk.” He has known the area since he was a boy. “My parents had a place in Sizewell, where we’d spend weekends and school holidays. Left to ourselves, my sister and I would be on our bikes all day, roaming far and wide. There are few corners of Suffolk that I haven’t explored – it’s a beautiful county. The people, the architecture, the light, the food, the antique shops... It’s a unique and lovely part of England.”

Trevor bought the cottage three years ago, having sold his previous weekend home sometime before. “I wanted a smaller house and garden that would require less upkeep,” he explains. “I love seeing my friends, but the days of inviting 12 people over ▶

Glazed double doors lead to the conservatory, now a useful daytime sitting area overlooking the garden. The marble-topped 1960s side table is one of a pair bought from Bottega in Taporley, Cheshire, whilst the floral rug was a find in the Grand Bazaar, Istanbul.





*Trevor loves incorporating oranges into the decorations. ‘The scent is fabulous, and after New Year, I make masses of delicious marmalade’*

**ABOVE** Trevor enjoys cooking for guests and everything is near at hand in the compact kitchen. The copper saucepans are from the historic E Dehillerin cookware shop in Paris.

for Sunday lunch are over for me; six people around the table are quite enough – I can hear what everyone is saying.”

Trevor’s talent for design and decoration extends in many directions. He designs much of the beautifully made Pickett merchandise himself, and wherever possible he buys British. “The quality is second to none,” he explains. The homes he creates are as stylish and individual as his shops, and the same can be said for his Christmas decorative schemes, which he starts planning during autumn.

“For a number of years, I’ve tried to use natural materials wherever possible to minimise the ecological cost,” he says. There is nothing minimal about the decorative effect, however – everything is gorgeously over the top. He recounts how during his long country walks, he is always on the lookout for pine cones and pheasant feathers, which he stores in the garden shed until a week or two before Christmas. “The garden is still in the early stages, so instead of ordering a Christmas tree this year, I bought half a dozen birch

saplings and grouped them in a corner of the sitting room. Festooned with lights and hung with traditional ornaments made from offcuts of wood, they look suitably festive but won’t end up as woodchip mulch, like most Christmas trees come January.”

Another tradition Trevor loves is incorporating oranges into the decorations. “The scent is fabulous, and after New Year, I make masses of delicious marmalade.” The crackers are recyclable, too, being made of plain brown paper – there isn’t a speck of glitter to be seen. There is no shortage of sparkle, however; crystal decanters, pewter candlesticks and coloured glasses all gleam in the firelight.

When Trevor was sent details of the cottage he now calls home, it was not love at first sight. Nevertheless, he asked his trusted friend and builder, Russell, to give it the once over: “Russell had a good look around and, having clambered up on the roof, he told me that I’d regret it if I didn’t buy it. He was absolutely right – every time I walk through the front door, I know I did the right thing.” The cottage is situated in a hamlet



about a five minute drive from the nearest town and came with a good-sized, secluded garden, shielded from the houses on either side by trees. “The original building dates from around 1750, but had been extended over the years,” he adds.

With Russell’s help, Trevor drew up plans for the alterations he wanted to make. The sitting room is now unrecognisable; what were four poky rooms, is now a well-proportioned space for fireside reading, relaxing and entertaining. An integral garage was reconfigured to become the third bedroom and, with careful planning, space was found for the all-important utility room and downstairs cloakroom. The conservatory had been built by former owners, but by enclosing two of the three sides, Trevor has made it usable throughout the year. “It now warms up quickly and I have coffee in there whilst reading the Sunday papers and mulling over what needs doing in the garden.”

Trevor has long been a collector: “I have a craving for buying antiques,” he confesses. “It began when I was 12 – it was a silver-plated, fluted sugar bowl that caught my eye. I go through phases – basketry, candlesticks, carved wooden objects, paintings, china, painted furniture, pewter, glass... I can’t possibly keep it all, so as soon as I’m over that particular period or ▶

**ABOVE** A collection of rustic ceramic hens and decorative nineteenth-century china is displayed in the niche to the side of the kitchen fireplace. A set of handsome Hepplewhite-style dining chairs with serpentine top rails and broad pierced splayed backs surround the circular table.

**RIGHT** Candles massed on the early nineteenth-century dining table that is adjacent to the door to the kitchen provide a glittering festive display.





**ABOVE** The guest bedroom in the newer part of the cottage, is painted in a soothing shade entitled *In the Shadows* by Valspar. Vintage floral Laura Ashley curtains bought on a weekend visit to Cirencester in 2000 add pattern and colour, as does the traditional eiderdown and gingham bedlinen.

**RIGHT** The main bedroom and bathroom (opposite page) in the oldest part of the house are accessed by a staircase rising from the kitchen. The walls – painted in *Sea Dog* by Valspar – make a striking contrast against the white paintwork of the beams and ceiling.





*'I have a craving for buying antiques. It began when I was 12, with a silver-plated, fluted sugar bowl that caught my eye'*

genre, I sell everything at Marlesford Mill, an antiques centre near Woodbridge, where I have a stand." Some things are keepers, of course. The buyer of his previous house bought most of the contents lock, stock and barrel, but he kept a few favourite pieces, such as the circular dining table in the sitting room. Quite a few things have been acquired on his extensive travels over the years: the armchairs on either side of the fireplace

came from Green Square in Copenhagen, whilst the floral rug was a find from the Grand Bazaar in Istanbul. "Fortunately, two of my favourite shops, Dix-Sept Antiques and Goodbrey's, are in nearby Framlingham, so to indulge my craving, that's where I often head to on Saturday mornings. My own shops apart, they are the best places to find presents for friends and family – and myself too," adds Trevor with a laugh. ■

**ABOVE** Paintings by Australian artist David Bromley hang behind the handsome roll-top bath.

# NEW DECORATING GUIDE



**Interior Design** is the ultimate guide dedicated to helping readers create their dream home. From the publishers of *The English Home* magazine, it features invaluable advice from some of Britain's finest designers and interiors experts on choosing all the key elements that make a house an elegant home.

Order online at [chelseamagazines.com/interiordesign22](https://chelseamagazines.com/interiordesign22)

To order **Interior Design** online for £7.99\* and have it delivered directly to your door, visit [chelseamagazines.com/interiordesign22](https://chelseamagazines.com/interiordesign22)

\*Free P&P available with UK orders only. Rest of world post is +£2

# STYLE INSPIRATION

Our special section dedicated to interior design and decorating begins here ➤

## STRENGTH & BEAUTY

Cashmere velvet exudes luxury and indulgence. Indeed, in de Le Cuona's new Overland collection, its beauty radiates in luscious jewel colours, subtly shifting in deep, shadowy tones and shimmering highlights. Far from plain, this block colour offers a captivating lustre whether in ruby, onyx or amethyst. Though it is exquisitely soft with its cut-pile finish, it is a surprisingly strong textile choice for curtains and upholstery. Use to create a showstopping piece, whether a large ottoman or decadent armchair *Ottoman, Cashmere Velvet Ruby, £360 a square metre; and all cushions, de Le Cuona*



# Design PREDICTIONS FOR 2022

We ask industry experts for their views on how the past two years have changed the way we use our homes and what we can expect to see more of in the year ahead, from easily adaptable interiors to seamless designs for gardens

## DECORATING

### STRONGER COLOUR FOR COMFORT



JOA STUDHOLME,  
colour curator, Farrow & Ball

"There certainly has been a seismic shift in the way we are using colours in the home, with greys and neutrals giving way to

stronger tones to comfort us in our homes or sanctuaries. Defining spaces that are used at different times has become increasingly important, so that we can change the mood at the end of our working day. Most of us prefer to be in light rooms during the day and darker spaces in the evening, subconsciously working with the natural light.

In 2022 we want to embrace colour to mirror the spirit of kindness we all need to make our lives and our homes more joyful. The colours we use will be strong but modest, which suits both the way we feel now and the simpler lives we are leading after a year of turmoil. They are like memories of days gone by while celebrating contemporary life.

There is a great move towards using paint and colour in more unusual combinations. Checks used on floors and walls will be very popular, particularly red and white combinations. Strong colours will be used on the bottom halves of walls, with a white above to open up spaces and have an old-school feel. Lots of colour will be used on woodwork alongside white walls to create charming rooms that feel very friendly. And, of course, colour will be taken onto the ceiling to create really cohesive schemes. There is also a move back to using full gloss on joinery and the bottom half of walls – again to mimic the modest homes of days gone by."



LEFT This charming hallway employs Farrow & Ball's School House White for a pared-back, timeless and familiar feel, with Incarnadine below the dado rail to introduce some excitement. The door is painted in Stone Blue, used in Full Gloss, a finish which Studholme says is perfect for use in the home in 2022, and which can be introduced sparingly and in surprising ways to add a modern feel with a suitably vintage flavour.





## BOLDER CHOICES



**SARAH O'SULLIVAN,**  
*partner and home  
designer, John Lewis*

“Spending time with loved ones will be at the forefront of our minds over the

coming year, and we predict that customers will want to ensure they have the perfect set-up for entertaining both indoors and outdoors. Customers are becoming increasingly interested in the provenance of our products, and we are really proud

of our beautiful range of wallpapers that are printed in the UK. Our Palm Mural, a real show-stopping design, was designed by our in-house textile design team during the first lockdown. Customers also showed a great interest in our furniture rental trial, which we expanded on this year and will continue to offer into the new year.

Furniture made from beautiful, natural materials such as rattan, oak and walnut will continue to be popular with customers. Tactile designs that are hand-crafted have a timeless aesthetic and an enduring appeal that mix well with existing designs. Equally, we are noticing our

customers becoming braver and bolder with their design choices. Perhaps as a reaction to the difficult years we've had, customers are really responding to vibrant colours, standalone accent pieces and bold patterns.” ▶

**ABOVE** John Lewis's Heritage Revival look is bold, maximalist and draws on the company's archives to reinvent the classics. The style includes antiques and inherited pieces, plush fabrics, gilt, glass and unique accessories. *Tropical Palm wallpaper mural, £100 (three panels 10m x 69.5cm); Draper three-seater sofa in Charm Forest Green, £1,799; Canopy armchair in Saffron velvet, £549, all John Lewis*



“Hosting dinner parties – proper formal affairs – has become so popular

and made the dining room an important part of the house once more. Tablescaping has also become huge over the past year, so the detail on tabletops is more important than ever. Bold tablecloths, colourful glassware and careful styling – we’re making real use of our dining rooms as a place to host.

Our clients have wanted something a little different and quite cosy, so we have been layering patterned tablecloths with linen and mixing and matching different sets of china. A different plate for each course! Why not? It’s busy and mismatched, with lots of candlelight, and creates a very intimate and happy atmosphere.” *JOANNA WOOD, Joanna Wood Interior Design*



Linen window treatments are a sustainable choice in this project by VSP Interiors. The kitchen with oak table is made from locally sourced materials by Artichoke.

## ENVIRONMENTALLY CONSCIOUS DESIGN



*HENRIETTE VON STOCKHAUSEN, VSP Interiors*

“We are much more conscious of our environmental footprint, trying to use sustainable materials, questioning where products come from and approaching these considerations with our clients.

Are there options that are better for us and for the environment? Take wool, for example. It is flame-resistant, durable, water-repellent, renewable, bio-degradable, recyclable, organically produced... there is a never-ending list of good things about it. In terms of performance, wool is something of a miracle fabric to work with – and it’s a by-product that would otherwise just get thrown away.

We also use a lot of antiques, which not only help in adding patina, character and a story to an interior, but are also generally better made than many new offerings. At the same time we are giving something a new lease of life. With using antiques comes a need for traditional restorers, upholsterers and other artisans, of which there are so many in England.”

**RIGHT** In this billiard room by VSP Interiors most items are antique, including the billiard table and pendant light. The upholstery and curtains are made from wool by Johnston’s of Elgin, which in 2021 won the Queen’s Award for Enterprise in the field of sustainable development.





## MURALS & MAXIMALISM



**REBECCA CRAIG**, head of design, Sanderson Design Group

“We have seen a real revival of interest in archival documents, recoloured in more contemporary colours, used in a maximalist way. Printed velvets on upholstery are extremely popular, as are stronger colours and the layering of patterns.

There is a move from cooler colours to warmer tones, with soft blush and pink becoming the new neutrals, used as a backdrop in designs, as well as russets, rose reds and yellows. Green continues to flourish, from spring-like bold greens against white to deep, moody greens and emeralds. They combine with rattan and house plants for a very natural look.

Mural wallpapers creating a whole wall of art are often the focal point of a room, with stripes and mid-scale coordination becoming important alongside statement patterns and tactile, surface-printed wallpapers.

Home offices are being decorated in a “home-from home” style, incorporating texture, pattern and colour, comfortable seating and subdued lighting.

Lastly, hand crafted and sustainable fabrics are also in demand.”



**ABOVE** Sanderson’s One Sixty collection celebrates iconic designs, with florals and countryside motifs reimagined with a

distinctive colour palette. Here, the bold, pattern-on-pattern approach creates a dramatic statement.



*“Lighting for well-being is becoming very important. Something we are using more and more in high-level residential projects is full-spectrum lighting during the day – which is more stimulating, very similar to natural daylight and gives the true quality of colours – that dims to a warm light at night, imitating the quality of the old tungsten lamp, but also, as the neuro-scientists tell us, triggering the production of melatonin and enhancing your circadian rhythm. This is where it is all going: you can simply replace a light bulb and, without even thinking about it, your lighting is supporting your wellbeing.”* KATE WILKINS, Home Lighting Ideas ▶



## USING SPACE



### AN UPLIFTING GARDEN

JO THOMPSON,  
*Jo Thompson  
Landscape &  
Garden Design*

“Over the last two years, people have very much valued the extra space that gardens offer, and have been looking to capitalise on that. I have found that people’s priority has been how to integrate their wishes within the space so that it feels ‘at home’. Seamless design is key: a water feature is also a splash area for children to play in; a five-a-side football pitch is hidden behind terraces filled with herbaceous plants; a tranquil corner with a bench is also a spot for meditation; vegetable gardens are designed

to welcome both the children and the grown-up children!

I have been delighted to see how much colour in the garden has had a resurgence in popularity. The use of flower and foliage colour has never been so important as it is now: people are welcoming the move to incorporating uplifting tones to create different atmospheres as you move around the space.

The idea that we are ‘custodians’ of our outdoor spaces has also been uppermost in people’s minds. Wildflower meadows, large and small, have meant an increase in pollinators, and wildlife generally, in the gardens we make. Choosing the right plant for the right place is important for sustainability, ensuring that it isn’t too

hard to maintain and reducing the need for irrigation. Grass lawns have become clover lawns for the pollinators; shrub borders are filled with plants that butterflies love.

Last, but by no means least, making compost has gripped people’s enthusiasm: over the last 24 months, they’ve had the chance to use those new compost bays and bins we’ve incorporated, and to see for themselves the wonderful, almost magical, results of their very own ‘black gold’.”

**ABOVE** Jo Thompson’s BBC *Springwatch* Garden for the RHS Hampton Court Flower Show 2019 demonstrated the possibilities of rewilding a garden in order to provide vital support for wildlife, including log piles for beetles, bee tubes and a bird bath.



“The walk-in pantry was enjoying a surge in popularity before the pandemic, but now it’s practically *de rigeur*. From a functional point of view, the walk-in pantry takes a lot of storage pressure away from the main kitchen, and also becomes its own little oasis of calm in the process. The shelves are orderly, drawers below hide snacks and treats away from the roving eyes of little ones, and there are worktops that can be used for countertop appliances that you want out of the way.”

LOUISA EGGLESTON, creative director, Humphrey Munson



“People are spending more time in their homes – and they are expecting more from them. This means that rooms must be increasingly multi-faceted, to make the most of the space. Beyond the purely functional, aesthetics are ever-more important. In my experience, people need their homes to be uplifting, inspiring and perhaps even a little playful.”  
SARAH PEAKE, *Studio Peake*



## ADAPTABLE ZONES

PIPPA PATON,  
*Pippa Paton Design*

“There has been a huge increase in demand for spaces

to be less activity-specific and more easily adaptable. Alongside this is a rise in demand for bespoke, built-in joinery, which allows work areas, for example, to be shut away when not in use. There is also a demand for quiet, no-screen spaces, which can be shut off from a main area when required.

We have also noticed a substantial increase in clients asking for two separate workspaces in their homes that are capable of supporting remote working. These need to be separate, and able to be shut off from the other spaces, so that two people can host video conferencing simultaneously.

Creating flexible, broken-plan spaces can be achieved through physical dividers, at either full or half height – such as sliding, glazed screens, pocket doors or fully opening doors, or curtains which can

be drawn across to close off a space.

Half-height walls or a piece of furniture such as a console with lamps also provide a physical divide.

Alternatively, it could simply be a visual difference – such as a change in material at floor level, or a change in height at floor or at ceiling level. An alteration in wall colour or material, too – perhaps from light to dark or flat to very textured, particularly when going into a smaller, more cosy space, can clearly differentiate and zone the areas.” ▶

**ABOVE** A large, open-plan area is the focus of this cart-shed conversion by Pippa Paton. It comprises a dining space and two comfortable seating areas, and the furniture is grouped so that family and guests can enjoy each other's company, share a meal, read, play a board game or relax around the woodburner. Strategically placed rugs and a console table with two large lamps delineate the different zones.



## INVESTING

### INTUITIVE TECHNOLOGY



**NATALIE STEPHENSON & JULIETTE WRIGHT,**  
*Stephenson Wright*

“As people spend more time at home we are seeing an increase in requests for multi-use rooms. Bringing people together for either a sports event or a movie is a desire for many of our clients. They will often have a bar within the room and would like to enjoy a sociable experience. We are finding that what used to be considered a large television size, say at 55 or 65 inches, is no longer the norm. Clients are looking at 75, 85 and even up to 100-inch, large-format screens for their

main living areas. This poses design challenges in order to hide away the large black screen in these multi-use rooms. One solution is to build the screen into a piece of beautifully lit joinery which contains decorative accessories to take your eye away from the screen. Another is to use pop-up lift mechanisms within the joinery. The framed-art TV technology has come on tremendously, too.

When it comes to intuitive technology, we love working with Cornflake, as they can realise the potential of the latest technology solutions – such as a one-touch control to simultaneously dim the lights and lower a projector. We also have clients who have a dedicated cinema room kitted out with the latest in audio-visual technology, stretched fabric walling, stepped levels, a deep velvet carpet and low-level lighting controls for the ultimate home-cinema experience.”

**LEFT** Stephenson Wright have further disguised a framed art television by adding bronze leaf sculptures above it to create a wall of artwork in this pretty sitting room.

**RIGHT** Beautiful joinery houses a screen and decorative pieces to help lessen the dominance of the television in this sitting room by Stephenson Wright.

## SMALL SPACES, BIG IDEAS



**MICHELLE KATZ,**  
*Q Design House*

“The last couple of years have really changed how people are approaching investing in and altering their homes, and there is a turning point now as to whether those changes are still what people really want.

During the early part of the pandemic there was a lot of talk about adding one or even two home offices, home gyms, home meditation spaces and yoga studios. However, as the world is going back to normal, I think people have found an appreciation for their homes, but also a greater appreciation for the mental benefits of leaving their home to go to work or the

gym. Because of this, we are back to maximising the space as a more traditional home, rather than sacrificing bedrooms as offices or gyms.

We are getting more and more enquiries for intelligent spatial planning without costly extensions, and people have realised the importance of maximising the use of their homes, whether that is as a multi-purpose environment due to Covid, or as a traditional home. One aspect of this is that people are choosing bolder, more dramatic designs for smaller spaces, to give these rooms an identity in themselves, as well as investing heavily in built-in joinery to maximise storage.”

**RIGHT** A sophisticated built-in vanity maximises space and complements dramatic dark walls and a bold parquet floor in this sophisticated bathroom by Q Design House.





FEATURE: KATHERINE SORRELL PHOTOGRAPHS P72 (FARROW & BALL) © JAMES MERRELL P73 (JOHN LEWIS) © DAMIAN RUSSELL P74 (VSP POOL, TABLE) © TOM BUNNING, (VSP KITCHEN) © PAUL MASSEY, (VSP PORTRAIT) © STEVE KEVINACK, (LOANNA WOOD PORTRAIT) © ASTRID TEMPIER P75 (SDQ) © ANDY GOBE, (KATE WILKINS) © ALEXANDER O'NEAL P76 (GARDENS & PORTRAIT) © RACHEL WARRIE P77 (PIPPA PATON ROOM) © PAUL COGIG



**ABOVE** This contemporary indoor pool and spa maximises the natural light from outside for a radiant and tranquil effect. It is part of a

country home that was designed and built by Janine Stone & Co in a contemporary Arts and Crafts style.

## CONTEMPORARY COUNTRY



**JANINE STONE,**  
*Janine Stone & Co*

“Perhaps because country retreats, spas and clubs across the country have been closed off for the last

18 months, our team has been increasingly approached to make space or extend residences in a way that allows them to feature a luxurious home spa with, for example, a sauna, Turkish bath and/or swimming pool rolled into one.

A positive of the pandemic for me is that people are placing greater value on their personal health and wellness than perhaps they did before. We have found that those who have made their country homes their main residence over the last year and a half are favouring a contemporary take on the classic country aesthetic. Our clients seem to have desired what they haven't been able to access in recent times: the contemporary, zen-like spaces typically experienced in modern luxury hotel spas.” ■

A five-arm chandelier with lit candles hangs in a wood-paneled room. The chandelier has a dark metal frame with five curved arms, each holding a lit candle. The room features dark wood paneling and a large window with a wooden frame. The lighting is warm and ambient, highlighting the textures of the wood and the glow of the candles.

LUX IN TENEBRIS

The English House  
*Handmade light fittings*

[www.theenglishhouse.co.uk](http://www.theenglishhouse.co.uk)  
Tel: Charles Morris on +44 (0)1502 478493



# NEW YEAR HONOURS AWARDS 2022

Celebrate and discover the most covetable interiors products, notable brands and inspiring designers to bring creativity, comfort and joy to English homes in our highly respected annual awards



Wallpaper, Botanical Studies, de Gournay x Michael S Smith (see page 89 for more information)

# Wallcoverings

New neutrals, tiles as art and showstopping wallpapers – digitally printed and handmade – make the grade in our selection this year

## LITTLE GREENE

Of note this year from Little Greene were its 'Stone' paint collection and 'National Trust Papers II' wallpaper collection. Offering an array of tempting warm neutrals to transition away from greys, 'Stone' included 11 new, rich colours inspired by Little Greene's ongoing collaboration with the National Trust, capturing key colours from different periods. This partnership also formed the basis of the range of wallpapers, which were inspired by original designs at historic properties owned by the charity – from a quirky snail motif to a more classic Jacobean tree of life design, the collection is perfect for updating a period home.



ABOVE Wall, Nether Red, £24.50 for 11 Absolute Matt Emulsion, Little Greene

RIGHT Mandalay, Ceviche, £216 a roll, Little Greene



## BALINEUM

Tiles are often selected for function and practicality, however, these beautiful designs by artist Wayne Pate for Balineum make this medium an art form. Distinctive and impactful, these tiles just as easily be displayed on a shelf as an object of beauty as used as a wallcovering. Each of Pate's distinctive geometrics and graphic floral depictions are hand-painted onto the tiles in Italy.

ABOVE Wayne Pate Tile Collection I, from £21.80 each, Balineum





## SUSAN DELISS

Given Susan Deliss's extensive knowledge and love of antique textiles, her first foray into wallpapers was bound to be exciting. Inspired by embroideries and antique weaves in her fabric collection, the Maribor design is bold and distinctive, combining pattern and stripe, but very useable. Available in four colourways, each paper is hand-painted and block-printed. A true exhibition of craftsmanship and beauty.

**ABOVE LEFT** Wallpaper, Maribor, Imperial Red, £480 a roll, (and selection of lampshades), Susan Deliss

**ABOVE RIGHT** The paint hues used to create Imperial Red colourway of Maribor.

## COLE & SON

We admired the range of techniques, styles and artistry displayed in a special collection of wallpaper that pays homage to six iconic royal residences, now under the care of Historic Royal Palaces. From a magnificent mural-like design based on elaborate wrought-iron screens in Hampton Court Palace's gardens to realistic baroque-style silvered mirror tiles, the collection impressed. Our standout piece had to be the contemporary digital take on a vast seventeenth-century tapestry at Kensington Palace.

**BELOW** Verdure Tapestry, £500 a roll, Cole & Son



## ARTE

Singling out one collection from Arte's extensive creative offerings this year was challenging. The Manila collection of six wallcoverings in a variety of colourways stood out for its exquisite artistry. Combining organic and floral shapes crafted out of threads hand-laid onto paper backing, each design is full of texture, creating a sumptuous backdrop that is tactile and luxurious. We were captivated by the craftsmanship and innovation, as well as the natural inspiration for the designs.



**LEFT ABOVE** Flore wallcovering in Terracotta, £131 a roll, Arte

**FAR LEFT & LEFT** The Manila collection is meticulously made using threads inlaid and attached by hand.

*Also of note...*

The large-scale, artistic flair of Collage, a made-to-order wallpaper by Phillip Jeffries; Thibaut's first vinyl collection, Pavilion, which combines performance with an Asian aesthetic; and the variety in Zoffany's Kensington Walk wallpaper collection. ▶



# Fabrics

From stand-out designs, expert techniques and covetable collections, we reveal our highlights from a few of the textile collections of the past year

## JIM THOMPSON

The Alchemy collection by Jim Thompson caught our eye with its exploration of precious metals and textures. Innovative semi-sheers in linen contrast with opulent fabric woven to look like squares of gold leaf. The large-scale delicate filigree-patterned leaf motif of Patra (right) was a favourite. Each leaf is accented at the edges with metallic threads, exhibiting wonderful attention to detail that makes this design particularly special.

**BELOW LEFT** Chair, Wilde, Forest, £115 a metre; stool, Dorian, Red/Teal, £89 a metre, both Colefax and Fowler  
**BELOW LEFT** Carsina, Old Blue, £159 a metre; Wilde, (from top): Old Blue, Red, Forest, Pink, Sand, Silver, Charcoal, Blue, £155 a metre, Colefax and Fowler  
**RIGHT** Curtain, Patra, Onyx, £150 a metre, Jim Thompson



## COLEFAX AND FOWLER

Often amongst our picks for our annual awards, Colefax and Fowler's collections always feature a tempting selection of designs. This year we had to include the Spring 2021 offerings because of the complex marriage of Eastern inspiration with antique textiles, as well as some beautiful contemporary updates, such as a velvet animal-print (left). Kilim-inspired weaves and crewel work embroideries offer heritage and eclecticism, making this collection easy to layer without feeling contrived or 'matchy'.



## NEISHA CROSLAND FOR SCHUMACHER

This exciting collaboration between design stalwart Neisha Crosland and fabric house Schumacher delighted us with its graphic yet pretty depictions of espaliered trees and climbing plants on bold coloured grounds. Crosland was inspired by a range of historic media such as Elizabethan needlework and Persian silk rugs, which she reinterpreted in her clean artistic style, finding geometric repeats for a modern feel.

**ABOVE** Queen Fruit Chintz, Lapis (curtain and screen far right), £176.40 a metre; Tumble Weed, Delft Blue (screen) and Buttercup (chairs), £296.40 a metre; Hurdles, Mineral (stools), £176.40 a metre, all Neisha Crosland for Schumacher



## LINWOOD

Designs that celebrate our native flowers always please, and Linwood's The English Garden collection is no exception. The chintzy and classic florals featuring roses and wisteria appealed to our country cottage sensibilities. We feel the oak leaf stripe of Hester offers a refined note for both town and country, whilst Kitty (above) celebrates a traditional tree of life design in exuberant bold colour that would work well in both traditional and more contemporary abodes.

**ABOVE** Sofa, Roman blinds and cushions, Kitty, Spring Green, £64.90 a metre, Linwood

## OSBORNE & LITTLE

Playful and eye-catching would be a good way to encapsulate the designs presented by Osborne & Little this autumn. Big, bold, exotic panoramics were hero pieces, but it was the craftsmanship of some of the other textiles that captured our hearts. Printed fabrics were given rich detailing with embroidered and knotted embellishments or appliquéd elements. Amphora (*below*) in particular stood out for its stylised crewel work depictions of richly hued vases filled with flowers and foliage.

**BELOW** Amphora, £165 a metre, Osborne & Little  
**BOTTOM** Tivoli, £265 a metre, Osborne & Little



### *Also of note...*

Soane Britain's collaborations with Karun Thaker and Sophie Coryndon; Julia Brendel's contemporary twist on chinosierie in her Victorian Tale collection; and a sneak preview of a new damask design, launching in December, from Chelsea Textiles in collaboration with Patrick Kinmouth has us very excited. ▶

# Flooring

Contemporary collaborations that bring a modern approach to referencing the past pave the way for designs underfoot

## ZOFFANY X RIVIERE

For its inaugural rug collection, Zoffany gave rug company Riviere exclusive access to its expansive archive. The resulting six designs are like works of art, each hand-knotted at Riviere's workshops in Nepal. With colours chosen to harmonise with Zoffany's paint collection, this collaboration provides a fantastic undertone and great versatility to a scheme.

RIGHT (On floor, from top) Kanoko, Moon Silk; (upright, from left): Jigsaw, Taisho, Tumbling Blocks, Suminagashi, EPOA, Zoffany x Riviere



## CAMBELL REY X NORDIC KNOTS

We loved the Gustavian charm of Campbell Rey's three rug designs - Garden Maze (above), Folding Ribbon and Climbing Vine - for Nordic Knots. With colours inspired by Werner's Nomenclature of Colours, a guide to the colours of the natural world, the rugs come in wisteria lilac, deep amber and four shades of green. The collection includes motifs, such as a neoclassical-style wreath and folding ribbon, as well as taking inspiration from the world of garden design.

ABOVE Garden Maze rug, from £690, Campbell Rey x Nordic Knots

## SARSEN STONE X NATIONAL TRUST

Drawing inspiration from National Trust properties, gardens, coastlines and countryside for this collaboration, Sarsen Stone has created an array of tiles for both flooring and walls. From limestone tiles replicating the look of the ancient stone at Lacock Abbey to the knot-garden pattern inspired by Moseley Old Hall's Tudor Knot Garden, these designs add a layer of heritage to a home in a wide selection of designs.

RIGHT Moseley, Moss, £54 a square metre, Sarsen Stone x National Trust



Also of note...

Other flooring that we admired include Jennifer Manner's Provence collection, a jute-effect using the re/Purpose fibres of recycled plastics; the Herringstrip Flatweave by Alternative Flooring; block parquet from The Natural Wood Floor Company; and handwoven kilim rugs by Susie Watson Designs.

# Furniture

From stand-out designs, expert techniques and elegant collections, we reveal our highlights.

## SAMANTHA TODHUNTER

Named after the Oxfordshire village where the renovation of Grade II listed Queen Anne house The Old Vicarage inspired its inception, the Warborough collection captivated us with its glossy consoles, curvaceous armchairs, upholstered trestle tables and smart stools. Each piece is customisable and made to order – we particularly love the collection's clever reworking of classical shapes with a contemporary twist.

**BELOW** Lucia console in Powder Puff Pink gloss, £2,880; Alexander stool in Leopard velvet, £1,380, Samantha Todhunter



*Also of note...*

We loved Martin Brudnizki's first home collection and Studio Atkinson's Bobbin mirrors and side tables in lacquer and mirror variations.



## GUY GOODFELLOW

The neat three-strong furniture collection by Guy Goodfellow belies the style impact of its compact form. The Carver chair, a reproduction of an original early nineteenth-century model, works as both a dining or occasional chair thanks to its generous scale, as does the Dining chair albeit without the arms. Completing the trio is the Ottoman, which is based on an early Victorian original and has turned legs and castors.

**ABOVE** Carver chair and Dining chairs, EPOA, Guy Goodfellow

**BELOW** Gibbings slipper chair (left), from £1,920; Cow armchair (right), from £2,240, Julian Chichester

## JULIAN CHICHESTER

Launched as part of the new AW21 additions at Focus, Julian Chichester's most recent pieces draw on the integrity of nineteenth and twentieth-century design that blends respect for tradition with a new modernity. Designs of note include the Blow bookcase, featuring ebonised oak shelves atop two triangular leather-wrapped tiered ends, the low-slung Cow Armchair, with an oak frame and generously curved back, and the Gibbings Slipper Chair in distressed walnut. ▶



# Lighting

Delicate brass work, early twentieth-century art deco chic and sculptural forms lit up 2021's collections

## DAVID HUNT

Designed as a trio of sculptural leaves radiating outwards in a fan formation, the delicately hand-painted designs of the Ginkgo collection launched in AW21 are named after their botanical inspiration, and encompass both a wall and table lamp variation, each available in cream and gold or black and gold. As with many David Hunt pieces, each item is created using traditional techniques in the brand's Cotswold workshop. We love the soft diffusion of light and shadows created against their undulating forms.



## SOHO LIGHTING

Created as part of the Schoolhouse collection, this hand-blown glass pendant is modelled on a 1900s vintage moulding with solid brass cap and elegant hanging chain. Available in a series of finishes including glass from clear through to opaque, the choice of metal detailing includes polished brass, lacquered aged brass, polished nickel or ungalvanized brass for a natural aged patina.

## VAUGHAN

The Ellisfield Collection, inspired by the Arts and Crafts movement and launched in September 2021, saw Vaughan introduce the wall-mounted Bamboo Lantern as a new rendition of the brand's beloved chandelier design. Based on an original antique, it showcases a finish created with lost wax casting to produce the detailed brass work - each section is hand-soldered in place to form the intricate effect that lends an elegant 1930s feel and to create a warm patina designed to age beautifully over time.



TOP Ginkgo wall light in Cream and Gold, £174; Ginkgo table lamp in Cream and Gold, £222 (base only), David Hunt

ABOVE Bamboo wall lantern, £504, Vaughan

LEFT Glasshouse polished brass clear pendant light, £589.75, Soho Lighting

### Also of note...

We have been impressed by innovation, beauty and craftsmanship in collections by Tom Raffield, Cox London, Bella Figura, Christopher Hyde, Curiousa & Curiousa, Charles Edwards and Porta Romana.

# Collaborations

Last year saw many design forces combine in special collections. Here we celebrate a few favourites from a competitive field

## FARROW & BALL X LIBERTY

The partnership of these two much-loved brands to create a special edit of colours and fabrics is deeply satisfying and somehow feels very 'right'. The 15 shades from the Farrow & Ball Archive collection and complementary interiors fabrics from the Liberty Modern Collector range have been selected by experts from both brands to form a series of colour and print combinations that have their roots in the past, yet will suit both traditional and contemporary interiors.

**BELOW** A selection of the new paint colours by Farrow & Ball x Liberty



*Also of note...*

Collaborations that also caught our eye in the past year include Susie Atkinson x Drummonds; Lux Deco x Laura Hammett; Burleigh x Craven Dunhill Jackfield; and Rita Konig x The Lacquer Company



## DE GOURNAY & MICHAEL S SMITH

When celebrated American interior designer Michael S Smith – who decorated The White House for the Obamas – got together with de Gournay, whose hand-painted wallpapers are, of course, nothing short of exquisite, we knew the result was going to be exciting. Smith's collection of five wallpaper designs celebrates the themes and patterns of the natural world, and covers a diverse range of decorative styles, from Swedish rococo to Portuguese tile-work. It is almost impossible to name a favourite, but Botanical Studies, hand-painted onto individual segments of India Tea Paper, has to be a contender.

**ABOVE** Botanical Studies, from £1,956 per panel (915mm width), Michael S Smith x de Gournay. Interior design by Edward Hurst

## TURNER POCOCK X LORFORDS CONTEMPORARY

Lorforde Contemporary's expertise is in traditional luxury furniture, and this collaboration with interior designers Bunny Turner and Emma Pocock, which grew out of a long-standing working relationship, has resulted in a chic range that we simply could not resist. It comprises sofas, chairs, ottomans and a rather lovely bench, all handmade using time-honoured and sustainable techniques. The team's obsessive attention to detail is evident in the quality of each piece, featuring delicate details, precise lines and, most importantly, after a lengthy development process, a superb level of comfort. ▶



**ABOVE** Modern sofa, £7,200, Turner Pocock x Lordforde Contemporary



# Ones to watch

We applaud creative and talented individuals and brands whose work caught our eye over the past year making us excited to see what they bring in 2022



## STEPHANIE BARBA MENDOZA

Born and raised in Mexico, Stephanie Barba Mendoza began her career in London as a residential interior designer before joining Martin Brudnizki Design Studio working on high-profile projects spanning hospitality, homes and retail including Annabel's, The Ivy and Sexy Fish. Over time, she honed her own adventurous aesthetic, defined by a celebration of colour and pattern inspired by her Mexican roots, a love of honest materials and a passion for collaborating with artisans. Launching her own studio in 2020, Stephanie creates warm, inviting, sensory spaces that stand the test of time.

*Also of note...*

We loved Mac Collins' striking furniture; Lam Lighting's ballet-inspired designs; wallpaper marvel Kit Miles; and talented potter Isatu Hyde.



## ANBÔISE

Interior designer Annabelle Holland launched luxury home brand Anbôise in June 2021 as a natural extension of her studio's signature style, bringing character into the home by combining classic and contemporary furniture to create a sense of evolution over time, providing multi-layered designs with depth and interest. Evolving collections of handmade British furniture, lighting, art, antiques and accessories draw inspiration from her global travels and her upbringing in Jamaica.

## DIVINE SAVAGES

Husbands Jamie Watkins and Tom Kennedy – also known as Divine Savages – want to bring colour, warmth and wit into our lives and homes, to nurture our passion for daring design and help us be braver. The London duo design maximalist wallpapers and fine fabrics, home accessories, gifts and limited-edition art prints – always with a wink – in a carefully and cleverly curated spectrum of colourways so the 'volume' of intensity can be controlled, from soothing to stimulating.



FEATURE SARAH FEELEY PHOTOGRAPH PRO (LEFT) © CASEY MOORE

# Anniversaries

These three heritage brands proudly celebrated landmark anniversaries in 2021 of 265 years between them

## MULBERRY HOME

After borrowing £500 from his mother, Roger Saul set up a leather goods company in 1971, naming it after the trees he used to pass on the way to school in Somerset. Following the global success of Mulberry's beautiful bags, he spotted an opportunity to expand into interiors, and founded Mulberry Home in 1991. Now owned by GP & J Baker, Mulberry Home marked its 30th anniversary in 2021 with the Long Weekend collection inspired by English country house parties of the 1920s and '30s.

BELOW Sporting Life Velvet, £149 a metre, The Long Weekend collection, Mulberry Home



*Also of note...*

Top interiors brands celebrating big anniversaries in 2021 included Thomas Crapper & Co (160th), Vispring (120th), Marlborough Tiles (85th), Hillarys (50th) and Haddonstone (50th). ▶



ABOVE Through the Decades wallpaper, 1940s, Parsonage Bloom, £65 per roll, Graham & Brown  
BELOW Owl & Willow, £299 for three sections on a roll, Morris & Co

## GRAHAM & BROWN

Friends since school, Harold Graham and Henry Brown founded Graham & Brown in Lancashire in 1946. The company celebrated its 75th anniversary in 2021 by launching its Through The Decades collection featuring an iconic archive pattern from each decade and donating a percentage of sales to raise £75,000 for charities. The duo learnt their trade as teenagers in the factory of wallpaper firm Cunliffe & Ward before starting their own business which today is also famous for its wall murals, wall art, paint and cushions.

## MORRIS & CO

Internationally renowned company Morris & Co marked its 160th anniversary in 2021 with a new design, Owl & Willow (left). The brand was founded in 1861 by William Morris and friends from the Arts and Crafts movement, which emphasised the importance of decorative arts and craftsmanship in the home. It was initially called Morris, Marshall, Faulkner & Co, and provided beautiful, handcrafted home products. Morris's famous maxim still holds true: "Have nothing in your houses that you do not know to be useful or believe to be beautiful."



# Hall of fame

We celebrate five esteemed figures who have made significant contributions to design, interiors, furnishings and decoration



## NICKY HASLAM

This year sees a remarkable 50 years since Nicky Haslam started practising officially as an interior designer – though *unofficially* he was never anything but, styling his Eton study with faux-ocelot curtains and a carpet of artificial grass, and decorating for himself and friends during the 1960s while working for *Vogue* in New York and then as a cowboy (yes, really) in Arizona.

Today, his London-based architectural and design firm, Nicky Haslam Studio, is considered one of the most important in the UK, known for glamorous design, bespoke furnishings and a style that combines a confident sense of history with a modern outlook, as well as great humour, charm and wit – much like the man himself.

A well-known socialite, accomplished artist (his watercolours are in the V&A), and prolific writer, Haslam has regularly featured on best-dressed lists, is a talented cabaret singer and a wonderful raconteur, and even has a side-line in amusing tea towels. Not only illustrious and influential, Haslam is utterly inimitable.



## DAME ZANDRA RHODES

**ABOVE** Rhodes' collaboration with luxury bed company *Savoir* saw her iconic 1971 motif 'Field of Lilies' reproduced in signature maximalist style, resulting in the romantic Lilies bed.

**ABOVE LEFT** Nicky Haslam has an inimitable style, full of wit and confidence.

Since the late 1960s, Dame Zandra Rhodes has been at the forefront of British and international design scenes, notable for her unique aesthetic that fuses dramatic prints and bold colour.

Rhodes studied textiles at the Royal College of Art, but her early designs were deemed by British manufacturers too outrageous to produce so she made them herself. In 1969 she took a clothing collection to New York, where it was featured by Diana Vreeland in *American Vogue*.

Awarded Designer of the Year in 1972 and Royal Designer for Industry in 1974, Rhodes was made a Commander of the British Empire in 1997 and a Dame of the British Empire in 2014 in recognition of her contribution to fashion and textiles. In 2003 she set up the Fashion & Textiles Museum in London's Bermondsey.

Recently, Rhodes has collaborated with Ikea on home accessories, with *Floor Story* on a collection of rugs, and with *Savoir* to create an extravagantly patterned bed (*above*) – each of which exemplifies her glamorous, exuberant, maximalist style.



## SIR TERENCE CONRAN

The Conran name is, quite simply, synonymous with good design, and it is hard to overstate the significance of the late Sir Terence (1931–2020) on the development of the British design scene in the latter half of the 20th century.

He studied textile design at London's Central School of Arts and Crafts, establishing a furniture studio whilst still a student, but left in 1951 to make his professional debut working on the Festival of Britain. From then on, there was no stopping him. A furniture workshop was followed by a French-inspired restaurant, then a coffee shop, then a design group which encompassed his furniture design and interiors and retail spaces.

He launched Habitat in 1964 (introducing a sometimes-dubious British consumer to woks and chicken bricks), which expanded nationally alongside his restaurants and design businesses, whilst he also published a series of now-classic books. He was knighted in 1983 and one of his proudest moments was the launch of the Design Museum in 1989. Retailer, entrepreneur, restaurateur, businessman and author, Conran was always, however, first and foremost a designer.

## NINA CAMPBELL

An eminent designer, celebrating a half-century of extraordinary achievements, Nina Campbell set up her eponymous interior design business in 1971. After training with John Fowler, one of her first solo jobs was to redesign Annabel's private members club for Mark Birley, with whom she was later to establish her first shop – where she launched her signature 'hearts' design, still available on her range of fine bone china.

The Nina Campbell brand, run with two of her three children, Max and Alice, now comprises a globally influential interior design company; a design studio, where Nina creates her fabric and wallpaper collection (distributed by Osborne & Little) and her range of beautiful home accessories; a furniture collection; and the famous shop in Walton Street, Knightsbridge.

Campbell's work is best-known for combining effortless functionality with subtle elegance and the highest quality craftsmanship; she is undoubtedly a true icon of design.



ABOVE Nina Campbell in her shop displaying some of her covetable homewares.

## ANN GRAFTON

Modestly working away from the spotlight, an unsung yet central figure in the interior design world is Ann Grafton, who has steered and developed numerous leading brands for several decades. Grafton's interest in interiors began in early childhood: her family owned a fashion business and she was surrounded by a glorious range of textiles.

Starting out as a merchandiser with BHS, in 1985 Grafton joined Colefax and Fowler in a similar role. She stayed with the Colefax Group (which includes the brands Jane Churchill, Manuel Canovas, Larsen, and Cowtan and Tout) for 18 years, rising to design and marketing director, and was instrumental in expanding the company's fabrics division. Having developed Jane Churchill from a small English company to a brand with global appeal, she won the Queen's Award for Export Achievement in 1995.

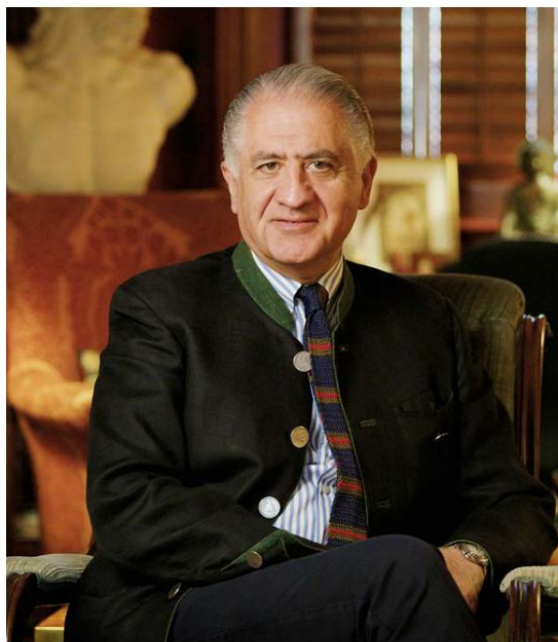
Her successful book, *Interior Transformations*, was published in 2001, and three years later she was appointed to luxury textile and wallpaper house GP & J Baker where, as managing and creative director, she now leads seven brands in the UK and internationally: Baker Lifestyle, Threads, GP & J Baker, Mulberry Home, Kravet, Brunschwig & Fils and Lee Jofa.

Grafton's influence on interiors may be quiet, but it is most certainly key. ■



BELOW Ann Grafton is an unsung hero that has worked on many of GP & J Baker's distinctive designs.





# Lifetime achievement

## Alidad

We honour an interior designer with an inimitable eye who is renowned for his opulent, elegant and comfortable schemes

ABOVE Alidad is renowned for his rich interiors, which combine architectural balance, superb comfort and effortless functionality with a layered, eclectic aesthetic.



Having spent decades as a major figure in the field of interior design, Alidad is not only globally acclaimed for his work, but also well-known to be one of the nicest people in the business. His timeless interiors are a unique mix of sumptuous fabrics, luxurious materials and superb craftsmanship, supported by a broad and deep architectural and art-historical knowledge as well as a painstaking attention to detail. He has an impressive command of all design aesthetics, from baroque to neo-classicism, chinoiserie to art deco, and is able to effortlessly combine colour, pattern, texture and scale, using antique, vintage and modern fabrics and furnishings, creating architecturally harmonious, richly textured rooms which appear to have come together over many years.

Perhaps surprisingly, Alidad is a self-taught designer. Born in Persia, where he

spent an idyllic childhood, he went to school in Switzerland and England and, after a science degree from London University, became Sotheby's youngest departmental director for Islamic works of art and textiles. After realising he was more interested in styling rooms than the objects within them, he established Alidad Ltd, his design studio, in 1985, and has lived in London for more than 40 years, working mainly in Britain, Europe and the Middle East. Prestigious commissions have included apartments in London and Paris, villas in Beirut and Kuwait, seaside homes in Sardinia and Cornwall, and the architectural restoration of the National Trust's Buscot Park – each of them demonstrating Alidad's sense of layered eclecticism and "matured nonchalance".

Alidad is a constant in lists of leading interior designers, and has been awarded

Best Interior Designer by three highly respected international magazines. He has collaborated with prestigious fabric houses Pierre Frey and Chelsea Textiles, been the subject of a book, *Alidad: The Timeless Home*, and designed an award-winning range of velvet-studded furniture including tables, chairs and a bookshelf.

More recently, he launched Studio Alidad for those looking to complete a project on a shorter timescale, to a smaller budget and with a more contemporary aesthetic. He also offers a consultancy service and has developed a brand-new online course – *How to Create Timeless Interiors* – in partnership with Create Academy, in which he shares his knowledge and expertise, showing that, by applying the universal principles of design, any home, whatever its style, can be beautifully elegant, deeply comfortable and highly functional. ■

# SALISBURY ANTIQUES CENTRE



www.salisburyantiquescentre.com  
94 Wilton Road, Salisbury, SP2 7JJ  
Tel + 44 (0) 1722 410 634



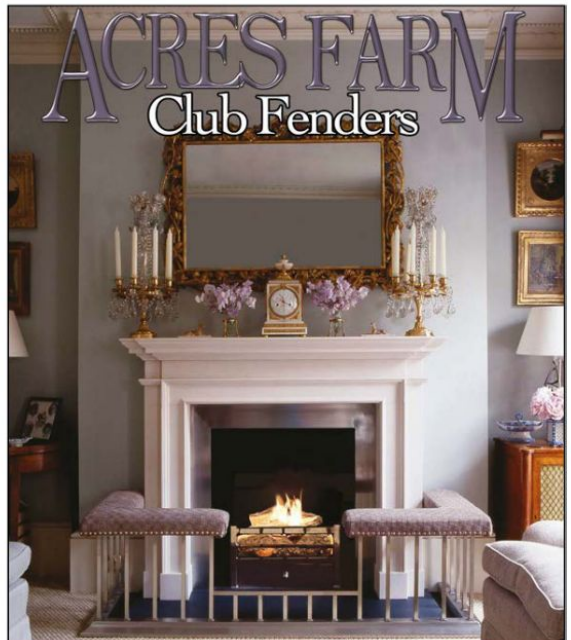
Period Hardware &  
Traditional Ironmongery

Shop and Online Store  
Based in Church Stretton, Shropshire.

4, High Street, Church Stretton, Shropshire, SY6 6BU  
Tel: 01694 720189  
Email: [info@thedoorknockercompany.co.uk](mailto:info@thedoorknockercompany.co.uk)  
Web: [www.thedoorknockercompany.co.uk](http://www.thedoorknockercompany.co.uk)



# ACRES FARM Club Fenders



Made to measure in Berkshire since 1980  
Measuring Service. Brochure Available.  
[www.acresfarm.co.uk](http://www.acresfarm.co.uk) Tel: 01189744305

CALLAGHANS OF SHREWSBURY

# A DECORATIVE TALE

As we explore the works of the Italian furniture designer  
Carlo Bugatti, Stella Callaghan of Callaghans of Shrewsbury  
explains why his creations are works of art





Historically, an artist or maker's works have been more celebrated after their death than during their lifetime, but the Italian decorator, designer and maker Carlo Bugatti (1856–1940) was one of the lucky exceptions. In fact, his intricate, Art Nouveau furniture was much admired during his illustrious career.

A particular highlight of Bugatti's professional years was exhibiting at the First International Exhibition of Modern Decorative Arts in Turin in 1902. It was here that the Queen of Italy commented that his pieces had a 'Moorish style' to them, to which Bugatti rather cheekily replied, "You are mistaken Your Majesty, this style is my own."

His confidence was clear not only in his manner, but also in his designs, which continue to impress to this day. Strikingly original, Bugatti's furniture combines the picturesque asymmetry of Art Nouveau with the exoticism of Moorish (despite his protestations) and Japanese influences, as well as the general European interest in Orientalism during the late nineteenth century. His idiosyncratic combination of all these cultural styles is what makes his furniture unique and sets it apart from the crowd.

So eye-catching are Bugatti's pieces, they have proved irresistible to Daniel

and Stella Callaghan, owners of Callaghans of Shrewsbury, an art gallery set in the heart of the picturesque Shropshire market town. Over their 35-year history they have garnered a reputation worldwide for their extensive knowledge in fields as varied as European nineteenth and twentieth-century oils and watercolours – particularly those by Claude Venard, Marcel Dyf, Antoine Bouvard Snr, LS Lowry and Kyffin Williams – sculpture, and now, of course, their extensive collection of Bugatti furniture, which the couple have been sourcing for more than a decade. "Each and every inch of Bugatti's pieces is covered in such intricate detail and design you can just admire them for hours," says Stella. "They truly are magnificent works of art."

Carlo Bugatti was born in Milan in 1856, with art and creativity clearly in the genes. His father was a sculptor, and his own sons continued in the artistic vein, with his younger son, Rembrandt, becoming a sculptor of some renown and his elder son, Ettore, becoming a car designer and founding the world-famous Bugatti automobile company.

Having trained in both architecture and cabinetmaking, ▶

ABOVE Far too beautiful to use, the *Lady's Throne Chair* (c.1902, H104cm x 36cm), has a highly detailed, black-stained walnut back with hand-beaten copper covered in intricate details, and is profusely inlaid with pewter and bone and decorated with hand-painted floral and bird motifs.

LEFT This black-lacquered wood *Octagonal Table* (c.1900, H76cm x 76cm) features a copper sunburst on each side and brass-wrapped legs.

OPPOSITE PAGE The top of the *Small Square Stool* (see overleaf) by Bugatti is easily identifiable as being crafted in the 1890s, as during this time he increasingly stylised his work with geometrization.





Oriental in style and inlaid with metal and adorned with tassels, this exceptionally rare three-seater sofa (c.1900, H36cm x L246cm x W53cm) is as impressive in scale as it is in detail.

**RIGHT** This *Key Hole Mirror* (c.1902, H211cm x L91cm x W18cm) shows how Bugatti created a detailed inlay effect to add contrast to the black-stained wood.

**BELOW** Full of intricate decoration, the *Small Square Stool* (c.1890s, H36cm x W41 x D41cm) is seen here in pewter yellow and blue-toned metals.

by 1880 Bugatti decided to focus on the latter, opening his own studio in Milan to produce furniture. At first, the theatrical designs were very rectilinear in structure, but eventually evolved into more fluid forms, which were unique at the time and remain so today.

Bugatti used unusual materials for his pieces, as well as decorative motifs, fringing and tasselling which add a softer flair to his designs. For example, a pair of high-backed walnut hall chairs feature hand-beaten copper and a hand-illuminated decoration on original vellum, whilst a decorative shelf is ornately crafted using pewter, brass and hand-painted decoration. He was also known to use ebonised wood, white wood and mother-of-pearl amongst other materials. The use of vellum is particularly characteristic of Bugatti's pieces, often with illustrations of plant motifs in a soft brown wash or a drawing of delicate spider with a web. He employed asymmetry to striking effect, too.

As Alfredo Melani, the renowned Italian art critic and architect of Bugatti's era, once said, Carlo Bugatti was "the first in Italy to create, and not just to dream, a modern style of furniture". Today, the distinctive design and decoration of Bugatti's furniture is instantly recognisable throughout the world. "It's the fact that his incredible pieces are one of a kind that also adds to the magic of Bugatti," explains Daniel. "His creations elevate any room to something splendid."



The collection is available to view and to purchase at Callaghans of Shrewsbury and at many of the exhibitions they attend across the UK and USA. ■

[callaghan-finepaintings.com](http://callaghan-finepaintings.com)

# *A beautiful home...* DESERVES PROPER PROTECTION

Having spent precious time creating your beautiful home, it is important to ensure you have the right insurance cover in place to safeguard your house, valuables and lifestyle



Now, as a reader of *The English Home*, you can benefit from expert advice, a personal claims concierge service and competitive terms on home and contents cover placed through leading insurance advisers Smith Greenfield.

This carefully researched insurance opportunity has been specially created for homeowners who have household contents worth more than £75,000.

It comes with many benefits that standard high-street policies do not offer, and readers of *The English Home* will receive access to products only available through expert independent advisers.

Equally important, claims will be settled promptly and without fuss.

## Special benefits can include:

- Warranty-free policies – your property is covered even if you fail to set your alarm
- The cost of alternative accommodation if your home becomes uninhabitable
- Cover for garden furniture, statues and equipment
- Family travel insurance, including for children travelling on their own

For a free quote or more information:

Call: 020 8603 3730

Visit us at:  
[www.smithgreenfield.co.uk](http://www.smithgreenfield.co.uk)



**SMITH  
GREENFIELD**

# George Barclay

ENGLAND



RRP: £129\*\* (excl. delivery)

*Pictured: Labrador lying on a 120 x 75 x 27cm Sofa Bed with an Orthopaedic - Blended Memory Foam Mattress*

George Barclay dog beds are available in a broad selection of styles and sizes to suit miniature breeds, through to Great Danes. Visit our website to view our extensive collection of dog beds, or purchase the ultimate indulgence for your faithful companion.

[www.GeorgeBarclay.com](http://www.GeorgeBarclay.com) Tel: 01722 712203 Email: [sales@georgebarclay.com](mailto:sales@georgebarclay.com)



## Energy Efficient Timber Windows and Doors

*Beautiful windows and doors, made in the UK. Preserving the character of your home, while incorporating double glazing, where permitted.*



01344 868 668

[www.sashwindow.com](http://www.sashwindow.com)



THE SASH  
WINDOW  
WORKSHOP

# QUINTESSENTIALLY

Inspiration for seasonal pastimes and making the most of life at home starts here ➤

## WINTER GUESTS

Encourage feathered friends to visit the garden by providing much-needed nourishment throughout the winter months. When berries, insects and other treats are scarce, and the cold weather means little birds need some extra help to keep warm, seeds and other suitable offerings will be gladly pecked up. The Royal Society for the Protection of Birds website ([rspb.org.uk](http://rspb.org.uk)) provides tips on the best things to offer and when, but key to establishing a regular visit from favourites such as robins, blue tits and finches is routine. Put food out at the same time each day as these friendly guests will soon create a favoured route around various gardens to find their breakfast, lunch and supper. Sit back with a cup of tea and enjoy watching them flit about.



# FROM PATCH TO PLATE

## Matthew Fort

An essential cook's ingredient, the humble onion is often overlooked for its own merit says the food critic and writer



I was meditating on the rich flavours of my onion soup the other night. The soup was a deep mahogany. A slice of sourdough toast piled with flakes of creamy sheeps' cheese lay becalmed on its glossy surface. Soft, translucent tendrils of onion lurked just below. Though I say so myself, in its own way it was a thing of beauty, and not just beauty, but of sustenance, happiness and pleasure. Just the thing for cold, dank winter weather.

It got me thinking about onions. We take them for granted. "Chop one/two/three onions," barks the recipe. "Add the onions." "Discard the onions." Yet, where would we be without them? They have a pivotal role in virtually all cooking cultures. They make the unremarked foundations of so many dishes. They are a true, year-round vegetable. They have been adding their subtle sweetness to soups and stews and sauces and curries and so on for at least 5000 years. Ancient Egyptians looked on onions as symbols of eternal life. The Romans treasured them. Plus they have been much appreciated in this country since at least the thirteenth century, when Alexander Neckham, the Abbot of Cirencester listed them as garden essentials.

Are we aware, though, of the diversity of the allium family, to which all onions (and leeks and garlic) belong? There are white, yellow and red onions and spring onions stacked up in supermarkets and greengrocers, and that is about it. I have yet to come across an heirloom or heritage onion in the same way we are routinely offered heirloom tomatoes and heritage carrots.

My eyes, or my tastebuds, rather, were opened to the greater possibilities of the

onion world whilst sitting in the kitchen of La Carolee, a farming estate near Pianopoli in Calabria, some years ago. For lunch there were tongues of home-cured bacon, lacy with fat, on tiles of springy bread edged with heavy-duty black crust; tumblers full of the vigorous red wine made on the estate; and a pile of the new season's onions from nearby Tropea, the size of small apples and shaded a fine coral pink.

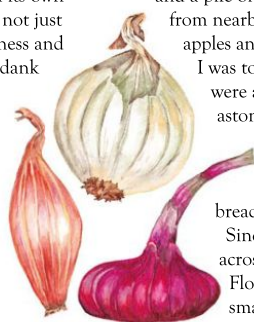
I was told to eat them as if they were apples, so I did, and was astonished by their crunch, delicacy and sweetness, with just enough acidity to keep the bacon and bread under control.

Since then, I have come across onions from Roscoff, Florence and Ailsa Craig (a small Scottish island), Borretana, another fine Italian

representative, Paris Silver Skin, and Senshyu from Japan. I have grown them, too. With mixed success, it has to be said. It seems that mice, rabbits, badgers, not to mention slugs, snails and woodlice, are all as partial to onions as I am. However, there they are in my veg patch even now, onions from Tropea, Florence and Senshyu, the gallant survivors, tall green shoots fluttering like pennants, beginning to fill out. Presently they will get to the point of plumpness to be picked. I will draw them out of the earth, clean them up, and then stew them in butter until they are soft and sweet. Then I will eat them as if they were as precious as truffles.

#### About Matthew

Best known as a judge on BBC's *Great British Menu*, Matthew is an award-winning food writer and critic. He was the Food & Drink Editor of *The Guardian* for 15 years and is the author of four books.



### MY ONION SOUP

Onions are a true all-year-round vegetable, in that we can eat them in various states every season. Here I have provided a recipe that is more suited to the types of onions available at this time of the year. I have called it 'My Onion Soup', but of course, it is not really mine. All onion soups are variations on the same theme. My version has the great virtue of simplicity. I like to fry the onions in duck fat for an extra layer of richness.

Serves 4

#### INGREDIENTS

1kg medium-sized yellow onions  
1 tsp duck fat  
1l strong chicken stock  
Salt and lots of black pepper  
4 slices of sourdough bread  
Hard sheep's cheese (or any hard cheese you happen to have)

#### METHOD

- Peel the onions, cut them in half and slice them thinly across the grain.
- Melt the duck fat in a saucepan. Add the onions and cook gently, stirring from time to time until they are just soft.
- Pour in the chicken stock, bring to simmering point and then simmer gently for 15 minutes.
- Toast the sourdough slices.
- Grate the sheep's cheese and pile it on to each toasted slice. Decant the soup into four bowls.
- Launch a slice of the toasted sourdough and its cheesy topping on each bowl of soup. ■





# SET THE SCENE FOR: *Festive drinks*

Whether hosting a simple gathering or a grander party, planning ahead will ensure a sparkling evening of celebrations

**T**he festive season just would not be the same without taking time to raise a glass and celebrate with family and friends, and there are plenty of excuses to do so.

Pre-Christmas drinks parties provide the perfect incentive to decorate the house, polish glasses, replenish the cocktail trolley and help everyone get into the spirit of the season.

Family gatherings can be made all the more special with appropriately festive drinks or each individual's favourite tittle, as well as a selection of delicious morsels to keep everyone happy. Keeping a pan of mulled wine on the go during this period will be a welcome surprise to any well-wishers and present-bearers who happen to be passing. The delicious aroma will pervade the house and make everyone fill everyone with seasonal spirit.

Of course, for the ultimate excuse to host a drinks party, there is no better time than New Year's Eve. Though Christmas decorations will still be up, for extra panache and a change of scene add a statement piece especially for the occasion. This can create a backdrop for photo opportunities too. A balloon garland or arch, or a sequined or glittery backdrop adds the perfect festive touch. So put the champagne on ice, polish the glasses and welcome the New Year with plenty of sparkle and stylish aplomb. ▶

**LEFT** See in the New Year with a touch of theatre brought by a statement decoration. A large balloon installation will add drama and fun to proceedings, whilst a pretty tasselled garland can be used to co-ordinate with flowers and other pieces for a chic and considered finish.

## CHAMPAGNE MOMENT

When midnight comes, ensure the champagne is ready to serve. Do not leave chilling until the last minute and plan ahead as serving champagne at the right temperature will definitely improve the taste of the wine. Ideally chill in the fridge for several hours or, if guests bring a bottle that needs cooling quickly, try placing in a champagne bucket filled with ice and plenty of rock salt that will melt the ice and speed up the chilling process, cooling a bottle of champagne in about 15 minutes.



LEFT Lena brass champagne cooler, £76, Rowen & Wren  
ABOVE Gatsby mirror tray, £45; Smoke cocktail glass, £40 for a set of four; antiqued silver glass votives, from £8, all Fika Living

## FESTIVE FLAVOUR

Serve Christmas drinks with a truly festive feel using seasonal herbs, berries and spices for extra flavour. Add a dash of 1920s glamour to any party with art-deco-inspired accessories, plenty of twinkly candlelight and cocktails infused with warm hints of rosemary syrup, finished with a sprig of this fragrant herb. Or get creative and mix up festive spicy ginger and espresso martinis or a Christmas mojito using mandarin and star anise.

## ESSENTIAL ELEMENTS

Stock up with whisky, brandy and port for classic winter warmers. Bar accessories in luxurious marble and brass are fit for purpose and ideal for adding finishing touches with a dash of seasonal flavour. Use a sharp knife to slice clementine rind and add a refreshing burst of citrus taste.



RIGHT Jermy chopping board with knife, £52, Soho Home

LEFT Giardino hand-etched wine glass, £79 for a set of six, Sophie Conran



## SHINING EXAMPLE

The secret to a successful drinks party is to prepare everything in advance so when guests arrive glasses and canapes are at the ready. Set the scene for an evening of sophistication with clever styling of an existing piece of furniture such as a console table or sideboard for glasses and trays of canapes and nibbles. Use foliage decorated with twinkling fairy lights for seasonal glamour enhanced with classic dinner candles, fine glassware and pretty serveware for canapes, nuts and other nibbles. For extra sparkle source sequinned or glass-beaded table runners and accessories made from light-reflective mercury glass. ▶

Glass pillar candle holder, from £20; Dinner candle holder, from £25; Vintage glass dinner candle holder, £35; Portobello scalloped bowls, £25 for two; Monroe balloon glasses, £40 for two; Cut glass champagne coupes, £40 for two; Champagne beaded charger, £65; Bonbon cake stand, £35; Symons pre-lit garland, £95; Frill tealight holder, £8, all The White Company

unfitted



Fitted & freestanding furniture that's refreshingly different. Commissions fulfilled throughout the United Kingdom, Europe and worldwide.

Order a copy of our new 316 page brochure online. You're going to be impressed - it's the most comprehensive guide to classic kitchens in the UK.

Hope House, High Street  
Moreton-in-Marsh GL56 0LH

[www.unfitted.co.uk](http://www.unfitted.co.uk)  
01608 650065

Extraordinary kitchen projects



and proud of it

# BEDSTEADS

## Antique Bed Specialists

*In Brass, Iron, Wood & Upholstered Wood*



*Large stock of beds in all styles and sizes.  
Handmade mattresses and bases.*

*Restoration and widening service available.*

**All items on website in stock and available for delivery**

*Online and telephone sales available and showroom by appointment during Covid19 restrictions*

**Chelvey Court Barn, Backwell BS48 4AA • 01275 464 114**

**[enquiries@bedsteads-uk.co.uk](mailto:enquiries@bedsteads-uk.co.uk) [www.bedsteads-uk.co.uk](http://www.bedsteads-uk.co.uk)**



Comfort - Style - Quality

# 01264 861143

[www.berkeleydogbeds.co.uk](http://www.berkeleydogbeds.co.uk)

## Sparkling service

Smart ways to serve drinks



Barwell cut-crystal ice bucket, £139, Soho House

Hand-blown Italian multicoloured water glass, £65, Summerill & Bishop



Brushed gold drinks tray, £20.99, Von Haus



Bobble jug with gold handle, £155, Sophie Conran

Smoke tumbler, £42.50 for a set of four, Textured Lives



Tortoiseshell bar set, £75, Rebecca Udall



### KITCHEN PARTY

More often than not, parties overspill into the kitchen, particularly these days when kitchen spaces are designed to be super social. Used strategically, kitchen surfaces such as shelves, worktops and islands can be used for serving drinks and canapes, as well as for scene setting decorations and festive lights to add visual cohesion with other rooms. A dusky pink backdrop will accentuate any gold and copper tones.

### COCKTAIL HOUR

Host a New Year's Eve party that is fabulous and fun with a 'help yourself' cocktail bar. Point the way with a retro-style sign, a glamorous trolley stacked high with glasses and bar essentials. Treat guests to classic champagne cocktails to toast in the New Year such as sloe royale or seasonal combinations such as pear and cranberry or rosemary and grapefruit. Cocktail umbrellas optional. ▶

**ABOVE** Walls painted in Antoinette chalk paint, £21.95 for 1l, Annie Sloan

**RIGHT** Cocktails sign, £38; Antique-style gold drinks trolley, £260; Woven glass cocktail shaker with gold lid, £26; Gold Shell planter, £50; Vintage cut-glass high ball with gold rim, £9; Vntage cut-glass tumbler with gold rim, £8; Organic wine glass with gold rim, £14; Organic cocktail glass with gold rim, £16, Rockett St George





**FAMILY AFFAIR**

For a relaxing evening with family ensure there is ample comfortable seating available, particularly for older generations. Younger members of the family can happily stand or sit on stools. Have a drinks trolley at hand, stocked with everyone's favourite tipples, plenty of ice and a variety of nibbles to keep the parlour games going without having to dash to the kitchen for top ups. ■

*Lenox drinks trolley, £1,150; Rattan ice bucket, £95; Tortoiseshell glass cocktail set, £125; Lavaux glass goblets, £55 for a set of four; Faux shagreen oval plateau, £225, Oka*



*Lydia set of two side tables, £329, Sofology*



*Pink champagne flutes, £35 for a set of four, Sweetpea & Willow*



*Peggy three-level bowl by Astier de Villatte, £575, Summerill & Bishop*

FEATURE SARA EMSLIE  
PHOTOGRAPH P/201/21 © LIVINGMEDIA / BAUER SYNDICATION



# ADOPT AN OLIVE TREE

and enjoy the finest  
Italian olive oil all year  
from your own tree



# Pomora

OLIVE OIL

POMORA.COM



The Woodpecker Handwoven Tapestry (8'8" x 4'6") £4,725



## HINES of OXFORD

Antique, Handwoven, Jacquard & Custom Tapestries

[www.hinesofoxford.com](http://www.hinesofoxford.com)

01865 741144



deVOL Kitchens

Leicestershire · London · New York

# HOME PROJECTS

## *season by season*

From large kitchen extensions to a fresh coat of paint, knowing the best time of year to embark on maintenance and updates will ensure the process is smooth and the results rewarding

### Spring refresh

#### INVESTMENTS

“Installing a new kitchen is often motivated by living with an old kitchen over Christmas,” says Jasper Middleton, design director of Middleton Bespoke. Starting the process in spring ensures the new kitchen is functioning for summer gatherings. Bespoke kitchens take around eight weeks to create and the company allows two weeks for installation. The hand-painted counter tops take about two weeks and the kitchen installation up to a month.

If part of a new extension, construction may take around three months and Middleton advises considering architectural details whilst plans are flexible. “It’s also good to have given thought to the location of the sink and cooker, as these are key areas. That said, with Aga cookers now available in room-vented options, their location is more flexible. The same applies to down-draught extractors, which don’t need to be positioned on an external wall.”

Another project to complete in spring is a conservatory or orangery, ready for summer use. David Salisbury’s sales director, Karen Bell, suggests contacting suppliers early as delays have been common since the pandemic. “Ensure you meet a designer at your home so the individual characteristics of your property are considered and complemented in the design,” she adds.

**TOP RIGHT** Invest in a new desk to make a home office more inviting. Karelian hand-painted writing table with antique pewter handles, £2,007, Leporello

**MIDDLE LEFT** Reorganise ingredients in clear vessels to make for everyday ease. Pantry storage, from £18.50 for an Inkollu basket bowl, Nkuku

**MIDDLE RIGHT** Design an outdoor dining area in time for relaxed, sophisticated summer gatherings. Outdoor kitchens including grills, fridges, sinks, storage and lighting, from £18,000, Gaze Burvill

**RIGHT** Order bespoke doors in spring to be ready for summer. Double Bardwell arched doorset, £POA, Timber Windows





### SEASONAL SHOPPING

Bi-fold and external doors are in constant use over summer, so spring is an opportune time to have them installed. Richard Dollar, managing director at The Sash Window Workshop, recommends making enquiries early (at least five months in advance), and to keep production timely, he recommends considering requirements in advance. “Are you looking for noise reduction? Is privacy glass important? Do you want patterned or stained glass? All these things are achievable, but it is easier if you know upfront what you are looking for, especially as some types of glass (such as stained glass) can have very long lead times.”

As the weather is generally more favourable, it is the ideal time to lay down a new stone patio or path. Mandarin Stone’s product support manager, Daniel Morris, explains, “Spring is the best time to install an exterior floor as certain materials used in the installation process cannot be easily used in the depths of winter or the height of summer.” This is also a good time to construct an outdoor kitchen. “Remember outdoor lighting is key for food preparation and serving, extending the time and season to be able to use the space,” says Caroline Burvill of Gaze Burvill. ▶

**ABOVE** Paint colours show clearly in the spring light, which is helpful for selecting the colourway for a new kitchen.

*Kitchen hand-painted in a mix of Farrow & Ball’s Porphyry Pink and Light Blue, from £30,000, Barnes of Ashburton*

**BELOW** The lead time to install a conservatory or orangery can be four months (depending on size). *Conservatories or orangeries typically start from £40,000 (exclusive of buildings works), David Salisbury*



### IN THE GARDEN

Advice from Caroline Tatham, principal of The Cotswold Gardening School on jobs to do in spring:

- Sow hardy annual seeds under cover in March.
- By the end of March, there will be enough of the earlier hardy annual flowers, such as *Euphorbia oblongata*, and bulbs, such as early tulips and daffodils, to start arranging for the house again.
- Once April starts, direct sow hardy annuals – now that the ground is warm enough.
- Once the frosts are behind us, get on with planting half-hardy plants.

**ABOVE** This season, sow vegetables including tomatoes, carrots and beans. *Masterpiece green longpod broad beans, £2.50 for 45 seeds; Crimson flowered broad beans, £2.50 for 50 seeds, Sarah Raven*

### QUICK FIXES

- General spring cleaning. Make sure to move large furniture to clean underneath and have curtains and upholstery cleaned. “Rugs should be sent off to be cleaned each year,” says Interior designer Octavia Dickinson. “If you have wool carpets, it’s a good idea to get a moth treatment on them each year. I also encourage my clients to have all their upholstery and carpets MicroSeal treated. This puts a guard on them to make it much easier to clean off anything spilt on them.”
- Clean and check outdoor furniture. Before the first barbecue in late spring, scrub the grill with a wire brush and rinse.



## Summer living

### INVESTMENTS

Longer days make a bathroom remodel easier. Phil Etherden, managing director of The Albion Bath Company, suggests booking renovations at least six months ahead, with work usually taking around six to eight weeks. He also advises ordering everything in advance to avoid delays. "There may be unexpected issues found at the construction stage and it can take time to adapt to these, so factor this into your contingency plan," he adds. "Common issues include rotten floorboards, leaking pipes or old electrics."

To be ready for winter, install a new stove or fireplace in summer. Vicky Naylor, general manager at ACR Stoves, estimates around half a day for a simple installation and three to four days for larger jobs. "For a stove installation, an accredited installer, such as a HETAS-registered engineer, should be appointed," she says. Stove maintenance is also important. "The door seals should be checked for wear and tear periodically. If these become damaged or worn out, the stove will be less controllable and inefficient," says Naylor. "The firebricks, baffle and grate should also be regularly checked for signs of damage and replaced when necessary. The stove will only work as well as the flue it is attached to and the fuel that is burned."



**ABOVE** Summer's long days allow ample time to complete all the different stages of a bathroom renovation. *The Regent, with painted finish, from £3,570, Drummonds*  
**LEFT** With doors and windows open, paint will dry quickly at this time of year. *Wall, Parasol 508, £51 for 2.5l Pure Flat Emulsion, Paint & Paper Library*



**ABOVE LEFT** If new furnishings will require rooms to be rearranged, this season is a one to choose if pieces need to be moved outside temporarily. *Lily console table with a grey marble top, £449, Atkin & Thyme*

**ABOVE RIGHT** Paint dries quicker in summertime, so take the chance to refresh bedroom schemes. *Walls, Piranesi Pink and Pointe Silk, £49.95 for 2.5l Wall Paint; Chest, Olive and Primer Red, from £5.95 for 120ml Chalk Paint, Annie Sloan*

### SEASONAL SHOPPING

Summer is the best time to lay interior tiles. Mandarin Stone's product support manager Daniel Morris explains, "Warmer weather assists the drying out of the fixing process without the need to hire additional equipment." Tiles take around two weeks to fix but preparation is up to three months. To save time, Morris advises, "If levels allow, you can fix on top of existing tiles. Think ahead about how to finish edges and corners such as trims, mitering and edge finishes. When installing, ensure the lighting is close to the finished setting. Also, order enough tiles to avoid batch variation."

During these months, focus on walls to make decorating easier. Helen Shaw, director of marketing Europe for Benjamin Moore, explains summer's natural light helps with the process. "Windows can be open for air flow, which aids paint drying and curing." Paint exteriors now as daytime and night-time temperature variations are not extreme. "A large swing in day-to-night temperature is what causes the characteristic dew on surfaces, this can damage a paint film early in the drying process," she says. Now is also a good time to hang wallpaper, but be sure to pick a day that is not exceedingly hot as this can dry out adhesive. ▶



## QUICK FIXES

- Service boilers and check radiators. This is the best time to have the heating system out of action.
- Have electrics checked. "It is so important that you check the fuse box and electrics as this is one of main causes of fires," says interior designer Olivia Dickinson.
- Test and check cookers (Agas and range cookers should be serviced yearly).
- Clean chimneys. "For chimney repairs or sweeps, look for an accreditation from NACS or NACE, for example," says Vicky Naylor, general manager, ACR Stoves.
- Draft-proof and repair windows before colder weather. "We recommend customers place an order for any repair work during early summer," says Richard Dollar, managing director at The Sash Window Workshop.
- Focus on exterior maintenance, including trimming hedges, pond maintenance, oiling outdoor furniture and barbecues (after last use), and clearing gutters.

**RIGHT** Bleed all radiators and install new radiators before the arrival of autumn.

*Princess 1, comes in a range of finishes, paints and sizes, £262, The Radiator Centre*



## PLANNING AHEAD

**ABOVE** Avoid being caught out in autumn and replace damaged or unsightly fire baskets in summer.

*Buckingham fireplace, £3,575; Cadogan fire basket, £955, both Chesneys*

**LEFT** Opt for lighter, brighter hues for year-round summer feeling in a bedroom. *Shelves, French Blue, £51 for 2.5l Emulsion or £41 for 1l of Water-based Eggshell or Gloss, Edward Bulmer Natural Paint. Interiors by Lucy Marsh Interiors*



## IN THE GARDEN

**Advice from Caroline Tatham, principal of The Cotswold Gardening School on jobs to do in summer:**

- Keep up deadheading to be rewarded with extra blooms.
- Plant autumn-flowering bulbs such as colchicums.
- If regular harvesting is causing gaps in the vegetable garden, fill the spaces with fast-growing crops such as rocket, lettuce and radishes.
- Feed and water containers – they are relying on this for survival.



## Autumn restart

### INVESTMENTS

If swimming pools are to be installed by spring, autumn is the time to begin. Delyse Borley, director of Tanby Pools, advises choosing a Swimming Pool and Allied Trades Association (SPATA) installer. Planning permission takes around eight weeks and construction takes around three months. "But it is important to dovetail all the landscaping works involved around the pool so all trades finish at the same time," explains Borley.

To feel cosy in the coming months, lay carpet in early autumn – ideally on a bright, dry day when bulky furniture can be moved outdoors if necessary. Lisa Conway, residential marketing manager at Brintons, advises getting the space measured by a professional retailer. "If you choose a patterned design, extra carpet may be needed to match this up across a room. If there are any unusually shaped spaces or stairs with winders or half landings, you'll need additional carpet to satisfy changes in pile direction," she says.

The start of September is ideal to have new windows installed in time for Christmas. Richard Dollar, managing director at The Sash Window Workshop explains manufacturing begins after surveys are completed. "This normally takes around 10 to 14 weeks, although it is important to check this, as these lead times do vary depending upon demand and the complexity of the work."



**ABOVE** If swimming pools need repairing, autumn is often the best as it is out of season and so will not impact on time spent in the pool in spring and summer. *Swimming pool, £POA, Tanby Pools*

**RIGHT** Autumn's milder days offer the chance to fit cosy carpet underfoot before the cold weather sets in. *Kimberlite Cloud Carpet, Country Life Collection, £75.99 a square metre, Brintons*



**ABOVE LEFT** Dot smart task lighting around the house before the evenings draw in. *Abercrombie desk lamp in Antiqued Brass, £209.40, Jim Lawrence*



**ABOVE RIGHT** Replace windows at the beginning of autumn to ensure work is completed for Christmas. *Bespoke replacement wooden windows from £1,200, The Sash Window Workshop*

### SEASONAL SHOPPING

If considering updating lighting or completely replacing existing lighting, early autumn is a good time to have it installed. Sian Parsons, design associate at John Cullen Lighting, says, "Ensure your lighting and interiors are installed ready for the clocks changing in October to make evening scene-setting and commissioning of the scheme easier." Lead times depend on the project size: "A small upgrade could take as little as a week and a larger renovation or rebuild is likely to be 18 months or more," Parsons adds. Electrical work should be finalised at the design stage, but decorative decisions and joinery can be decided as the project progresses.

Early autumn is a good time to check if curtains and blinds need refreshing or replacing. "Sometimes curtains just need new lining or interlining," says interior designer Octavia Dickinson. "Sometimes, it is just the edges that need altering as they have frayed or become dirty through being opened and closed. If this is the case, it is easy to add a border to curtain edges. If faded, treasured curtains can be taken apart and the fabric position switched round so the faded part is hidden." ▶



### IN THE GARDEN

Advice from Caroline Tatham, principal of The Cotswold Gardening School on jobs to do in autumn:

- Divide and replant perennials, especially if congested.
- Sow hardy annuals. Give them reasonable drainage and they will overwinter, offering larger plants next year.
- Some annuals, such as sweet peas, are beyond recovery. Look for dry seeds on a sunny dry day and store in paper bags for planting later in the year.
- Plant spring bulbs now.
- Prune climbing and rambling roses once they have finished flowering.
- Autumn is a good planting season – nature is on a gardener's side because of the abundance of rain.
- Sweep up leaves, pile them up separately to the rest of the compost to create leaf mould which will be appreciated by woodland plants and bulbs.

**ABOVE** Just before the winter wardrobe change over, create the ultimate wall of built-in wardrobes in the master bedroom. After Eight Castille hinged wardrobe, £2,200 a metre, Neatsmith

**RIGHT** Internal shutters lend a flexible way to alter lighting levels during the shorter days and longer nights. Cafe-style shutters in Pure White without a tilt rod, from £185m<sup>2</sup>, Plantation Shutters

### QUICK FIXES

- Repair wooden floors now, as there is less moisture in the air.
- Have internal shutters and internal doors installed before the winter.
- Declutter wardrobes, put away summer clothes and refresh moth protection ready for the clocks changing. Commission bespoke and walk-in wardrobes.
- Protect against bad weather with loft insulation, water-pipe protection, check chimneys for damage and install chimney caps if necessary.
- Make external checks including the roof, security sensors and cameras.



Consider if adding curtains between open-plan areas or at external doors will help keep rooms toasty in winter. Cordoba Indigo fabric, £100 a metre, Rapture & Wright

## Winter haven

### INVESTMENTS

Although a sleepy season, winter can be the right time to start the process of designing a garden, says garden designer Lucy Roberts: "For medium-sized projects that are to be implemented in one go, it's a good idea to get in touch with a garden designer over the winter so that plans can be ready to be implemented in the spring and enjoyed over summer."

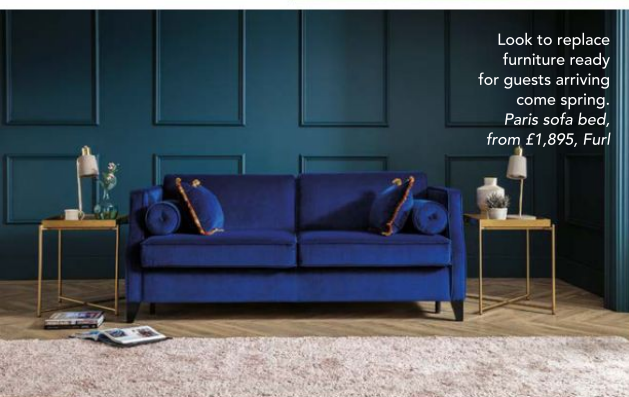
This dormant time of year is ideal to design an extension. Lydia Robinson, creative director of Design Storey, explains, "We feel there is a natural design cycle when working on projects, which begins with kicking off the project in January. We would work with clients on the initial concept designs in the early part of the year, with a view to submitting for the planning approvals in spring." Robinson advises using the design phase to research fixtures and finishes. "It can be good to get your eye in, explore options and gain an understanding of lead times before you are under pressure to order. You might find the lovely tiles you like will take a long time to ship and it means that you can ensure these are ordered early, so you don't miss out."

**RIGHT** When commissioning a garden designer, providing images of desirable garden schemes helps get the right vision.

Garden by Lucy Roberts

**FAR RIGHT** Order wallpaper samples now to plan for redecorating in the new year.

Spring Wild Rain wallpaper, £195 a roll, Seasons Classic collection, Lime Lace



Look to replace furniture ready for guests arriving come spring. Paris sofa bed, from £1,895, Furl



Make sure garden sheds are in good condition and watertight. Garden tool shed with waterproof roof, £279.99, Gardenesque



### SEASONAL SHOPPING

In preparation for guests staying in spring and summer, it is worth considering if replacement furnishings are needed. Interior designer Octavia Dickinson suggests paying attention to guest bedrooms and bathrooms. "Guests are often too polite to mention any problems," she says. "Go and stay in your spare room for a night or two to check everything is working and comfortable." It is also worth trying sitting room and dining room seating. Most bespoke bed and furnishing companies hold stock ready to order, but average lead times for custom-made is around four months.

It is also a good time to sort through kitchen cabinets. Once forever items are confirmed, the right dresser should make storage simple. "Consider the surroundings and the size of the space the dresser will be in. Think about what happens in and around the room," says George Miller, designer at Neptune in Fulham. "If you're using a dresser to display delicate objects, make sure there's enough room to bypass it easily to ensure your items are safe. If you're using your dresser for everyday use, for crockery and mugs, or even as an open larder, you will need to give the dresser as much room as possible for easy accessibility." ■

FEATURE: SUZANNE LE GROVE PHOTOGRAPHS P112 (TIMBER WINDOWS) © STEVE HOGAN P113 (BARNES OF ASHURTON) © PAUL RYAN GOFF (SARAH RAVEN) © JONATHAN BUCKLEY (SARAH RAVEN) P115 (CHESNEY'S) © LAKE FITZJONES (EDWARD BULMER) © DAVID PARWATER (BULBS) © OLGA PONOMARENKO (SHUTTERSTOCK) P116 (BRINTONS) © JON DAY (THE SASH WINDOW COMPANY) © EMMA FLETCHER P117 (RAPTURE) © MIKE GARLICK (NEATSMITH) © DOMINIC BLACKMORE (LEAVES) © KONSTANTIN ZIBERT (SHUTTERSTOCK) P118 (GARDENESQUE) © BRITT WILLOUGHBY DYER (LIME LACE) © JON DAY P119 (CARPENTER OAK) © CHRIS GEORGE (POTTING BULBS) © MACKAYSHUTTERSTOCK



**ABOVE** Begin the process of designing a new extension in winter, so work can begin in a timely manner. This extensively remodelled interior includes a new oak frame. *EPOA, Carpenter Oak.* Architecture by *The Drawing Room*

**RIGHT** Instil visual and tactile warmth with a range of eye-catching patterns. *Roman blind, Boho Glacier; Bench pad, Indus Glacier; Door curtain, Summit Glacier, and all other fabrics, Kasbah collection, from £23 a metre, Iliv*



## IN THE GARDEN

Advice from Caroline Tatham, principal of The Cotswold Gardening School on jobs to do in winter:

- Order seeds from a stash of catalogues. After the kerfuffle of Christmas fades, it is so joyous to look ahead to the coming season.
- Make a plan first though, especially for vegetables, to make the most of every square inch of the vegetable garden. Do not forget to include some hardy annuals for cut flowers.
- Sow sweet peas under cover.
- In January, take root cuttings from perennials such as phlox and delphiniums.
- Keep an eye on stored dahlias to check they are not showing any signs of rotting – store in sand in a dry cool place, try crates with air vents and a heavy rodent-proof lid.
- Remove old leaves from the likes of hellebores and overwintering ferns.
- Order summer-flowering bulbs in February.

**BELOW LEFT & RIGHT** At the beginning of winter, swap to luxuriously thick sheets to ward away night-time chills. *Duvet cover, from £60 for a single; Flat sheet, from £50 for a single; Classic pillowcase, from £15; Oxford pillowcase, from £25, all Faro Bed Linen collection, and all other products, The White Company*

## QUICK FIXES

- Layer cosy fabrics and textures in hallways, sitting rooms and bedrooms.
- Use a large moodboard to plan new schemes, source tester pots and fabric and wallpaper samples.
- After winter clear-outs, recycle unwanted items (visit local government websites to find recycling centres).
- Check safety sensors, including carbon monoxide and smoke detectors.
- Check external mouldings and skirtings in case leaves and dirt have built up over the season.





# *Social* INFLUENCERS

Acclaimed interior designer Jane Churchill, a relation of two of the great chatelaines of the twentieth century, discovered their cookbook in her family archive and was inspired to document their taste, sense of humour, love of food and stylish entertaining in a new book with Emily Astor

PHOTOGRAPHY ANDREW MONTGOMERY

If taste could be inherited, Jane Churchill, one of London's most prominent interior designers for more than four decades, was born with a fortune. Nancy Astor was her great-great aunt and grandmother of Emily Astor, and Nancy Lancaster was also Jane's great-aunt. Both women were renowned hostesses of their time and are still revered as icons of style to this day.

'The Two Nancys', as they were sometimes referred to, were actually American, born in Virginia and raised near Charlottesville, at Mirador, the country seat of the family patriarch, Chiswell Dabney Langhorne, a railroads and tobacco tycoon. Langhorne and his wife, Nanair Keene, had five daughters, celebrated as the Langhorne Sisters for their beauty and Southern belle charm. The eldest, Lizzie, married Thomas Moncure Perkins, a Richmond cotton broker. Nancy Lancaster was their daughter, as was Jane Churchill's grandmother, Alice Perkins Winn. "My grandmother and her sister Nancy Lancaster were very close," Jane notes. "They fought like cats and dogs, but adored one another. Both lived till they were 97. Strong American women – that's where my blood comes from."

If anyone fits that description, it's Nancy Astor. In 1906, she married Waldorf Astor, the second Viscount Astor, and the unbelievably rich heir to much of his famous American grandfather John Jacob Astor's real estate, lumber and fur empire, which placed her at age 27 in the centre of Britain's highest aristocratic and political circles. As a wedding present, Waldorf's father, William Waldorf Astor, who had transplanted the family from New York to England, gave them Cliveden, a vast estate dating back to the 1600s, set above the River Thames, an hour outside London. In 1919, Nancy was the first woman to take her seat in Parliament, where she would remain until 1945, and continued hosting the lavish weekend house parties for what came to known as the Cliveden Set, mixing top Conservative Party politicians with the likes of Charlie Chaplin, Rudyard Kipling, George Bernard Shaw, Edith Wharton, and T E Lawrence (also known as Lawrence of Arabia.)

"One of my earliest memories is of Christmas at Cliveden when I was four," recalls Jane. "Nancy Astor died when I was 16 and she had kept every single thank-you note from my brother Henry, my sister Melissa and me for presents she had given us over the years. She was a big influence."

For her part, Nancy Lancaster was said to have "the finest taste of almost anyone in the world". Indeed, she would come to be seen as the most influential interior decorator of her generation and, as a partner in Colefax and Fowler, was credited with upgrading and

promoting the traditional English country house look. In 1920, she married Ronald Tree, a scion of Chicago's Marshall Field department store dynasty, but who had been born and raised in England. In 1933, they bought Ditchley Park in Oxfordshire, an enormous stately pile built in 1722 for the 2nd Earl of Lichfield and designed by James Gibbs. Working with Lady Sybil Colefax and Stéphane Boudin of the Paris decorating firm Jansen, she set about transforming Ditchley Park into the most stylish house in England.

In the late 1940s, the Trees divorced, and Nancy wed Lt. Colonel Claude Lancaster. In 1954, a year after that marriage was dissolved, Nancy bought Haseley Court, an early eighteenth-century manor house near Oxford, which she renovated and decorated with John Fowler. Jane was seven years old at the time, and from then on "we spent every school holiday at Haseley. Those days were the highlight of our year". As for the fabulous Lancaster entertaining style: "It wasn't so much lavish, as well put together. And delicious. It wasn't over rich, just very good – both my grandmother's and Nancy's, neither of whom could boil water."

Jane's mother continued the Langhorne tradition of marrying into the English aristocracy, in her case to the Honorable Mark Wyndham, younger brother of Lord Egremont of Petworth, Sussex. And, in 1970, Jane herself wed Lord Charles Spencer-Churchill, a cousin of Winston Churchill, and a grandson of the American heiress Consuelo Vanderbilt, later Consuelo Spencer-Churchill, Duchess of Marlborough.

Jane had gone to work right out of boarding school four years earlier, as an assistant decorator with great-aunt Nancy Lancaster's firm, Colefax and Fowler. In 1982 she launched Jane Churchill Design, and over the years, her client list has come to include the Crown Prince of Malaysia, a prime minister of Qatar, cosmetics queen Estée Lauder, Formula One driver Sir Jackie Stewart, actress Elizabeth Hurley, and perfume maker Jo Malone, amongst many others too private to mention.

I asked Jane Churchill if the famous line "Living well is the best revenge" – attributed to the sixteenth-century Church of England clergyman and used by Calvin Tomkins as the title of his 1971 biography of the Roaring Twenties icons Gerald and Sara Murphy – could be applied to her ancestors, the legendary Two Nancys. "They didn't need revenge," she says. "They had what they wanted. They just lived well. They loved to entertain the family. That was their *raison d'être*."

Bob Colacello, New York, July 2021 ▶

#### OPPOSITE

A Spring lunch table set with Murano glasses from Cabana and linen from Anne Singer. Flowers here and throughout by Pulbrook & Gould

*“Winston if I were your wife, I’d put poison in your tea.”  
“Nancy, if I were your husband, I’d drink it”*

*Nancy Astor & Winston Churchill*

### CLAM CHOWDER

The recipe for the soup was obtained from the cook at Cedar Lodge, Rockport, Maine. This was where Charles and Irene Gibson (Nancy Lancaster’s aunt) would have stayed or dined waiting for the boat to take them to their island off Islesboro, Maine, known as 700 Acre Island on Dark Harbor. This soup is hearty enough as a main course for lunch, and only a small amount would be served as a first course at dinner.

Preparation time 15 minutes  
Cooking time 25 minutes  
Serves 4

#### INGREDIENTS

1 tbsp vegetable oil  
1 large onion, chopped  
100g streaky bacon, chopped  
1 tbsp plain flour  
600ml fish stock  
225g new potatoes, halved  
Pinch of mace  
Pinch of cayenne pepper  
300ml milk  
320g any fresh and smoked fish  
250g cooked mixed shellfish, including clams  
4 tbsp single cream  
Small bunch parsley, chopped  
Crusty bread to serve or crackers

#### METHOD

- Heat the oil in a large saucepan over a medium heat, then add the onion and bacon. Cook for 8–10 minutes until the onion is soft and the bacon is cooked. Stir in the flour, then cook for a further 2 minutes.
- Pour in the fish stock and bring it up to a gentle simmer. Add the potatoes, cover, then simmer for 10–12 mins until the potatoes are cooked through.
- Add the mace, cayenne pepper and some seasoning, then stir in the milk.
- Tip the fish mix into the pan, gently simmer for 4 mins. Add the cream and shellfish, then simmer for 1 min more. Check the seasoning. Sprinkle with the parsley and serve with some crusty bread or crackers.

### CREAMED LOBSTER

Lobster with a creamy sauce and Parmesan cheese. Add a teaspoon or two of sherry to the sauce if you would like.

Preparation time 10 minutes  
Cooking time 30 minutes  
Serves 4

#### INGREDIENTS

2 tbsp butter  
1 medium shallot, minced  
2 tbsp plain flour  
250ml milk or half-and-half (whole milk and single cream)  
170g cooked lobster meat  
Salt and pepper  
Split biscuits, toast points or baked puff pastry shells  
Parmesan cheese, for garnish  
Parsley, for garnish

#### METHOD

- Melt the butter in a frying pan over a medium-low heat.
- Add the shallot to the frying pan and cook, stirring, until tender and lightly browned.
- Stir the flour into the butter and shallots and continue cooking for 2 minutes.
- Gradually stir the milk into the roux and cook, stirring, until thickened. Add a teaspoon or two of sherry if desired. Add the lobster and heat through. Taste and season with salt and pepper.
- Serve over biscuits, toast points, or baked puff pastry shells.
- Garnish with Parmesan cheese and parsley, as desired. ▶

**TOP RIGHT** The dining room at Cliveden, decorated with Louis XV boiseries brought over by Nancy Astor from Paris. China and glass by William Yeoward.

**BOTTOM LEFT** Creamed Lobster is even more delicious to the eye when teamed with fun napkins and a garnish served in a shell.

**BOTTOM RIGHT** Haseley Court, Oxfordshire, the final home of Nancy Lancaster, which she designed and decorated herself, was frequented by family and used for entertaining. Jane Churchill has fond memories of it being “marvellously comfortable and welcoming”.





*“Two years after my first husband Henry Field died, I married his cousin Ronald Tree. I went into a shop to change my address and said, ‘I used to be Mrs Field, now I am Mrs Tree.’ All the man said to me was ‘You are very rural!’”*

Nancy Lancaster

**ABOVE LEFT** The table set for a grand supper at Cliveden with Aspley fine bone china and Fanny goblets by William Yeoward.

**FAR RIGHT** Pommes d’Anna, a simple yet elegant recipe. The tablecloth is made with Carole Langton fabric.

**RIGHT** A detail from the Cliveden dining table seen above.

**FOLLOWING PAGE**  
**TOP LEFT** Marmalade soufflés presented in William Yeoward Crystal. The green linen tablecloth is by Daylesford Organic.  
**TOP RIGHT** ‘Those Thin Cookies’ on Nancy Lancaster’s own Crown Derby tea set, with her own silver teapot.  
**BELOW** Afternoon tea on the terrace at Cliveden using Nancy Astor’s own silver teapot and linen by Anne Singer.

#### POMMES D’ANNA

Preparation time 25 mins

Cooking time 2 hours

Serves 6

#### INGREDIENTS

125g duck fat  
 3 garlic cloves, unpeeled but lightly crushed with the flat of a knife  
 3-4 fresh thyme sprigs, plus 3 extra thyme sprigs, leaves picked  
 2 bay leaves  
 1.25kg Yukon Gold, Idaho Russet, King Edward or Maris Piper potatoes

#### METHOD

- Put the duck fat in a pan with the garlic, whole thyme sprigs and bay leaves. Heat gently for 5–10 minutes to melt the fat, then set aside to infuse for 20 minutes, somewhere warm so the fat does not solidify. Remove and discard the aromatics.
- Meanwhile, peel the potatoes and slice very thinly (a mandoline is best for this). Wash the slices in cold water to remove any excess starch, then pat dry on kitchen paper.
- Heat the oven to 200°C/fan180°C/gas 6. Put the potato slices in a bowl and toss with the infused fat.
- Warm a 20cm non-stick, ovenproof frying pan over a low heat. Layer up the slices of potato in overlapping circles in the pan, seasoning every so often and sprinkling with some of the extra thyme leaves, until all the potatoes are used up. Continue to cook over a very low heat for 10–15 minutes to help the potatoes crisp up and brown. Shake the pan gently every so often to prevent the potato slices catching and burning.
- Cover with a sheet of baking paper and a lid (or foil), transfer to the oven and bake for 45–55 minutes until tender to the point of a knife. Cool for 10 minutes. Turn out onto a board or serving plate, then serve in wedges.

#### ROAST RIBS OF BEEF

Preparation time 10 minutes

Cooking time 20 minutes per kg for rare,  
25 minutes per kg for medium

Serves: 4

#### INGREDIENTS

1.7kg boned and rolled fore ribs, wing ribs or sirloin, plus bones  
 150ml red wine

#### METHOD

- Preheat the oven to 220°C/428°F/gas 7. Whilst it heats, weigh the joint and calculate the cooking time (see recommendations above).
- If using joined ribs as a roasting rack, tie the beef onto it with string. Or if separated, lay the ribs in the roasting tin, with the beef joint on top, fat side up.
- Roast for the first 20 minutes at an even higher heat than above, then lower the oven to 180°C/355°F/gas 4. For the rest of the time, baste the meat every 15 minutes.
- When the time is up, remove the beef, wrap loosely in foil and leave to rest. Drain off the fat from the tin, add the wine and cook over the hob, scraping up all the bits of sediment. Strain through a sieve into a jug, and when the beef has rested for 20 minutes, serve as a jus with the carved meat.

#### FISHCAKES

Preparation time 30 minutes plus chilling time

Cooking time 20 minutes

Serves 4

#### INGREDIENTS

225g cooked fish: cod, haddock and salmon, skin and boneless  
 120g mashed potato (no milk or butter added)  
 15g butter at room temperature  
 2 tbsp chopped parsley  
 Salt & pepper  
 1 egg beaten  
 White breadcrumbs  
 Sunflower oil for frying

#### METHOD

- In a large bowl mix the fish with the mashed potato, beat in the butter, chopped parsley, salt and pepper and blend until smooth.
- Chill in the fridge for at least 2–4 hours.
- Then form into round cakes on a floured board.
- Dip into the beaten egg, then into the breadcrumbs and fry in sunflower oil until golden on both sides.
- Makes four large fishcakes. ▶



## INDIVIDUAL MARMALADE SOUFFLES

Prep time 20 mins  
Cook time 30 mins  
Serves 4

### INGREDIENTS

4 medium oranges  
150ml milk  
2 medium eggs, separated  
6 level tbsp caster sugar  
2 level tbsp plain flour  
2 level tbsp fine-cut marmalade

### METHOD

- Preheat the oven to 180°C/350°F/gas 4.
- Slice the tops off the oranges and then scoop out all the flesh and juice into a sieve over a bowl. Squeeze out the juice from the pulp and reserve. Place the scooped-out oranges onto a baking tray, cutting a sliver off the bottoms if wobbly.
- Measure the milk in a measuring jug and make it up to 200ml with the orange juice.

## 'THOSE THIN COOKIES'

"Our cook was called Johnson, and there was a man who was always in and out of the cook's room. No one ever knew what that relationship was, but Johnson was a good cook and it was maybe one of those things best winked at." *Nancy Astor*

Originally known as 'ice box cookies', the method of refrigerating the dough overnight enabled Johnson to slice them extremely thinly. Nancy's older sister, the beauty Irene Gibson, always asked for 'those thin cookies' when she came to stay.

Prep time 30 minutes plus  
overnight refrigeration  
Cook time 10 minutes or less  
Makes about 30–40 cookies

### INGREDIENTS

200g caster sugar  
200g soft light brown sugar  
225g unsalted butter  
2 eggs

- In a small pan, whisk the egg yolks with 4 tbsp of the sugar until smooth, then whisk in the flour.
- Put the pan on a low heat and then gradually add the milk-and-orange mixture, whisking all the time. Heat for 1–2 mins, until the mixture thickens, then leave to cool. Add the marmalade to the custard and whisk again.
- Whisk the egg whites in a bowl until they become foamy, then add the 2 remaining tbsp of sugar and whisk again, until it forms stiff peaks.
- Fold the custard mixture into the egg white, being careful to keep in the incorporated air and taking care not to over mix.
- Divide the mixture between the scooped-out oranges. Fill up to the top and flatten with a spatula.
- Bake in the centre of the oven for about 25 minutes. They should be golden on top and just firm to the touch when lightly pressed. Remove from the oven and serve immediately.

437g plain flour  
1 tsp baking powder  
75g chopped almonds or pecans

### METHOD

- Cream together the butter and sugar until light and fluffy
- Beat the eggs with a fork and add to the butter and sugar mixture bit by bit, beating in between until the eggs are absorbed.
- Beat in the flour and baking powder and lastly fold in the chopped nuts.
- Knead well and shape into a roll, wrap in clingfilm and leave in the fridge overnight. (These also freeze extremely well, so can be prepared well in advance or simply stored for use later on).
- The next day, preheat the oven to 220°C/425°F/gas 7.
- Lightly grease or oil a flat baking tray.
- Slice the dough as thinly as possible and bake for 10 minutes or until golden brown. Keep a sharp eye on them as being so thin, they cook extremely quickly.

## ENGLISH SCONES

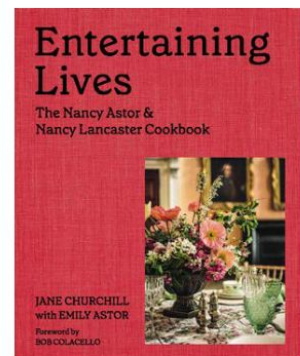
Prep time 15 mins  
Cook time 10 mins  
Makes 10–12 scones

### INGREDIENTS

225g plain flour  
Pinch salt  
½ tsp bicarbonate of soda  
1 tsp baking powder  
30g chilled butter  
4 tbsp milk and water mixed  
Milk for glazing

### METHOD

- Preheat oven to 220°C/425°F/gas 7.
- Flour a flat baking tray. Sift the flour, salt, bicarbonate of soda and baking powder into a large bowl. Cut the butter into small squares and rub into the flour using hands. Gradually add milk and water, and mix together with a knife to form a soft ball of dough.
- Knead on a floured surface briefly then roll out to ½ inch thick. Using a 2 inch pastry cutter cut out as many scones as possible. Roll up the trimmings and repeat. Place on the floured tray and brush the tops with milk.
- Bake in the oven for about 10 minutes until well risen and golden brown. ■



### READER OFFER

*Entertaining Lives* by Jane Churchill and Emily Astor, with a foreword by Bob Colacello, (Clearview Books, £40). Readers of *The English Home* can buy a copy of the book at a special price of £32 (including P&P, UK mainland only). To order, please call 01256 302692 and quote code UO5. Offer available until 5 January 2022.

The ENGLISH HOME  
Directory

To advertise call +44 (0) 207 349 3700  
or email: info@chelseamagazines.com

CLOTHING



buffers

Made in the UK



The Cotes Coat

07519 645900

buffersfleece.com

To advertise in the English Home please call  
+44 (0)20 7349 3700 or email: info@chelseamagazines.com

WANTED

~ WANTED ~

**STAMPED, LABELLED FURNITURE FROM  
GEORGIAN TO VICTORIAN BY COLLECTOR.**

Library chairs by R Daws, George Minter, Foot's  
Patent, Pocock, J Alderman, Samuel Pratt etc.

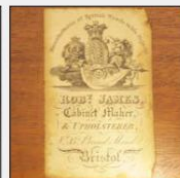
Campaign chests, chairs and other portable pieces by Ross of Dublin,  
E Argles, Morgan & Sanders, Thomas Butler, William Pocock, J W Allen,  
Gregory Kane etc

Tables, book cases, desks, Davenports etc by Wilkinson of Lugate Hill, James  
Winter, Priest of Blackfriars, Robert James of Bristol, Henry Kettle, Abraham  
Solomon, Seddon and many, many more. Chamber horse exercise chair.

Also, original marble fire surrounds from same period.

*Constantly wanted.*

*Please retain contact details for  
permanent future use.*



**vintagejewellery@yahoo.co.uk or tel 07958 333442**

POTS

TORC:POTS



@torc\_pots



www.torc pots.com



For more information visit us at [www.theenglishhome.co.uk](http://www.theenglishhome.co.uk) When calling the UK from North America,  
dial the country code '011 44' and drop the first '0' in the UK phone number

Exclusively for readers  
of English Home

Crew Neck  
Knitted Jumper

20% Cashmere  
80% Merino Wool  
Machine washable  
Size: XS · S · M · L · XL

Ref: A13L  
Lavendula  
Was £59

now  
£45

SAVE  
£14  
FREE delivery  
FREE returns



luxury  
cashmere  
& merino blend



"Excellent quality at a very good price.  
Good fit and nice choice of colours."  
Catherine, Suffolk

Cream

Marble

Ice Blue  
Marl

Pink  
Flambe

Mustard  
Seed

Village  
Green

Celestial  
Blue

Navy

Charcoal

Black

WoolOvers.com 0345 073 1040 Use Code: REM3

Terms & Conditions: Use code REM3 for total saving of £19.94 including FREE standard delivery and returns for Mainland UK only. Offer ends 1st March 2022 and cannot be used in conjunction with promotional codes, multibuy or discounted items. Offer is valid on advertised style (A13L) only. All orders are subject to acceptance under WoolOvers standard terms and conditions. Items can be exchanged or your money refunded, providing it is returned within 28 days from the date of purchase. WoolOvers shall not be liable for any washing errors or detergent damage. For full terms and conditions visit [www.woolovers.com/terms](http://www.woolovers.com/terms).

# ONE FINAL THING...

Create a magical space outdoors for celebrations beneath the stars

If a dry, crisp night allows, take the party outdoors and create a magical mood for festive celebrations or seeing the New Year in. We are inspired by this dreamy bohemian set up in the woods which could easily be replicated in the garden, ideally with a summer house or gazebo, or even just a covered seating area. Dress benches with faux fur throws and sheepskins for extra warmth - and ensure other seats are adorned with a blanket for each guest. Festoon trees or pergolas with strings of lights, and perhaps bring out indoor/outdoor pre-lit trees to really set a wonderland feel. Centre seating around a firepit, keep warming mulled wine flowing, create a party playlist and get everyone dancing in the moonlight.

*All blankets, trees and lighting, from Cox & Cox*





# STORM

BESPOKE SECONDARY GLAZING

HANDCRAFTED BESPOKE SECONDARY GLAZING  
FOR HISTORIC, PERIOD AND LISTED PROPERTIES

BENEFITS OF OUR  
GLAZING INCLUDE:



Acoustic protection  
from outside noise

Elimination of draughts and  
improved thermal efficiency

Preserves the character  
of your home

Virtually invisible



Ask us  
about our  
affordable  
finance  
option!

Tel - 01384 636365

CELEBRATING  
**20**  
YEARS

[www.stormwindows.co.uk](http://www.stormwindows.co.uk)

ESTABLISHED  
BY APPOINTMENT TO  
HER MAJESTY QUEEN ELIZABETH II  
SUPPLIERS OF SILKS AND FURNISHING TEXTILES  
WARNER HOUSE  
WILMSLOW

# WARNER HOUSE

SINCE 1870



**ARCHIVAL REVIVAL**  
Two centuries of iconic design

[WWW.WARNER-HOUSE.COM](http://WWW.WARNER-HOUSE.COM)