

A4 PRINTING INSTRUCTIONS

Before you get started on creating your Rossi of Fredy Wrap, make sure to read the below notes so that you can make sure your printer is calibrated and prints the patterns to the correct size.

Before you begin, please make sure you are printing on A4 paper with an A4 printer, not letter paper as the small difference in the paper size can mean your patterns don't print correct. A4 measures 210 x 297mm

1. Select Layers / styles:

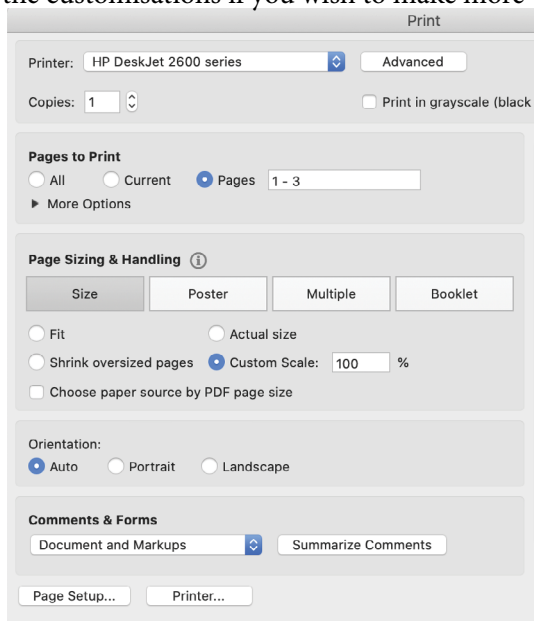
Make sure you have gone through the PDF and selected all necessary layers + Customisations that you need for your Rossi / Fredy Wrap in instructions. You can print out all the customisations if you wish to make more variations in future.

2. Print the first three pages as a test print:

We strongly suggest printing the first three pages as a test to make sure everything is set up correctly, to save time, paper and the environment.

When printing in Adobe Acrobat, do as follows:

- File > Print
- Select your printer
- Click 'Pages' and then type '1 - 3' (for test print)
- Click 'Custom Scale' and type '100%'
- Click 'PRINT'

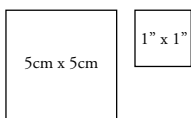


3. Calibrate and measure

When printing, although you would've selected '100%', most common household printers will print with a white border. Don't worry, this won't affect measurements and you **SHOULD NOT** trim the borders. However, to check this is correct for your printer – we have provided two tests of calibration squares.

3a: Single Square Calibration

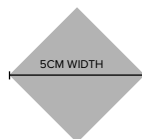
On the first pattern page, you will see a 5x5cm square and a 1"x1" square. Using your ruler, measure these squares to make sure they (along with your patterns) have printed to the correct scale.



Note: These calibration squares are an example only and are not printed to scale.

3b: Across-Page Diamond Calibration

You will then see a grey diamond split across the first two pattern pages (similar to the below example). Simply measure from one corner of the diamond to the other corner. This should measure 5cm from left point to right point.



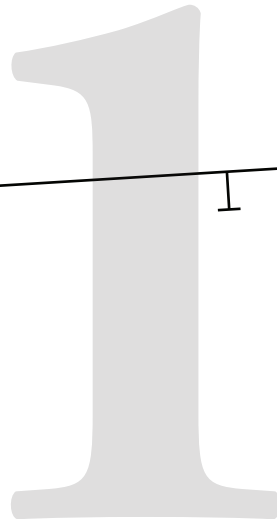
Note: This diamond is an example only and is not printed to scale.

4. You're all set and ready to go!

Once you have successfully tested and printed the first couple of pages, and double-checked the calibration as per steps 3a and 3b, you're all set to go!

5cm x 5cm

1" x 1"



ROSSI & FREDY

SIZE 6

SIDE FRONT #1

Details:

Connect Pattern Piece to #2
at notches at top of pattern piece.

Once connected:

Cut x 1 Pair (2 pieces all up)

Seam Allowance included: 1cm (3/8")

5CM WIDTH

ROSSI & FREDY

SIZE 6

SIDE FRONT #2

Grain Line

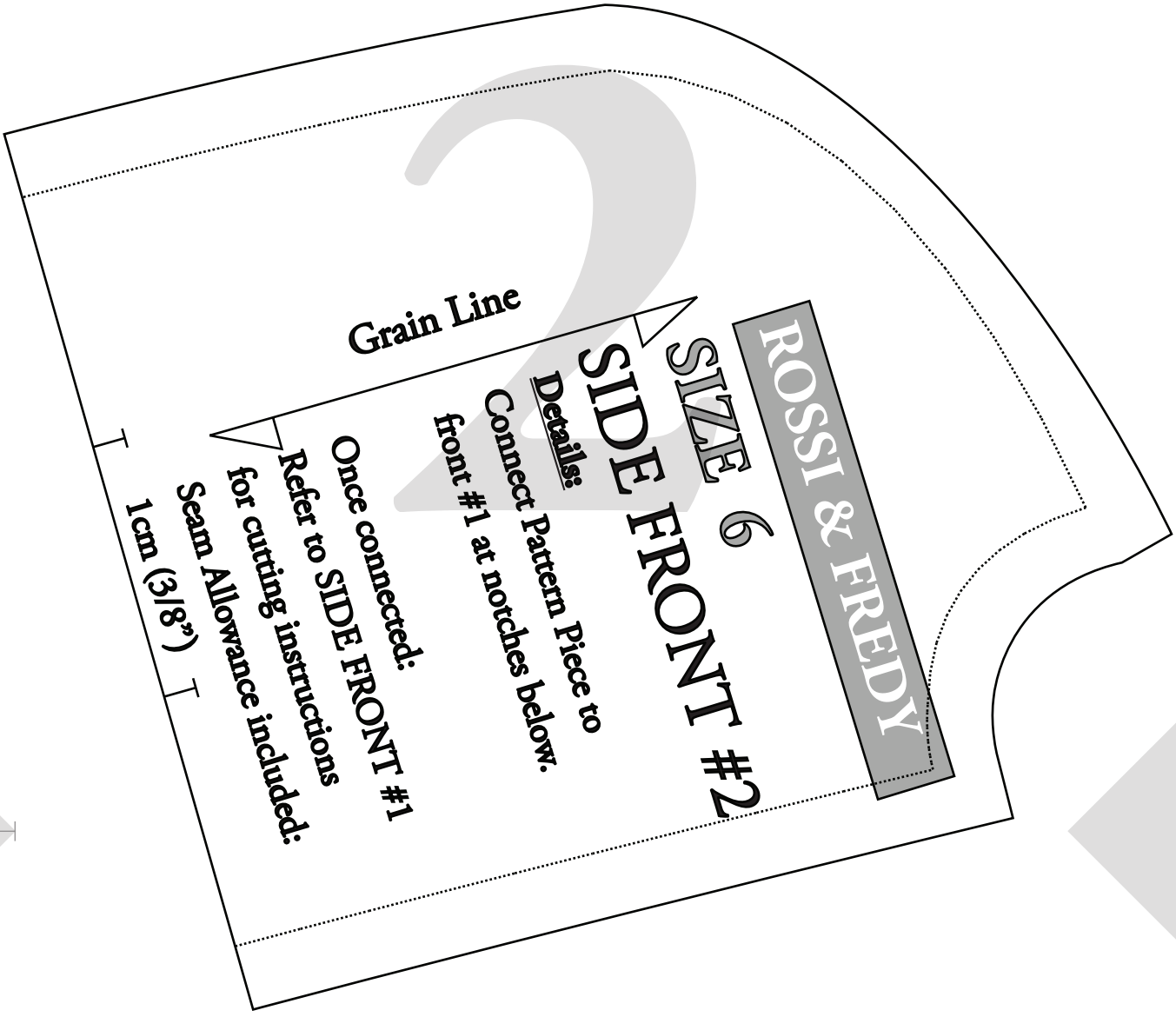
Details:

Connect Pattern Piece to
front #1 at notches below.

Once connected:
Refer to **SIDE FRONT #1**

for cutting instructions:
Seam Allowance included:

1cm (3/8")





ROSSI & FREDY

SIZE 6

CENTRE
FRONT MAIN #2

Details:

Connect Pattern Piece to
CFront #1 at notches below.

Once connected:

Refer to CENTRE FRONT #1
for cutting instructions

Seam Allowance included: 1cm (3/8")

t h e b o l d o n e

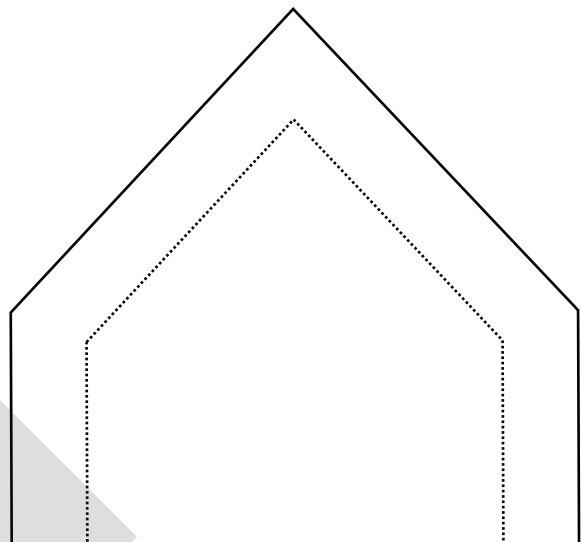
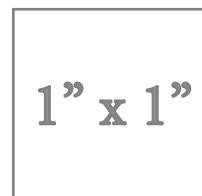
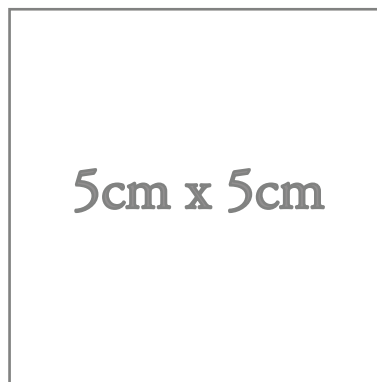
Fredy Wrap + Rossi Wrap – Size 6

© The Bold One Workshop Patterns.
These patterns are copyrighted by
The Bold One Patterns and may not
be copied, shared, or resold.

Reproducing this pattern to sell items
commercially is prohibited.

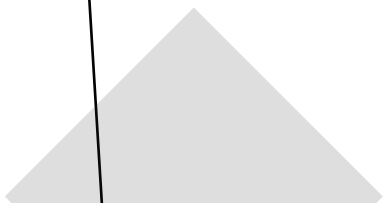
Seam allowance = 1cm (3/8")

Use the following boxes to check
pattern has been printed to correct scale.

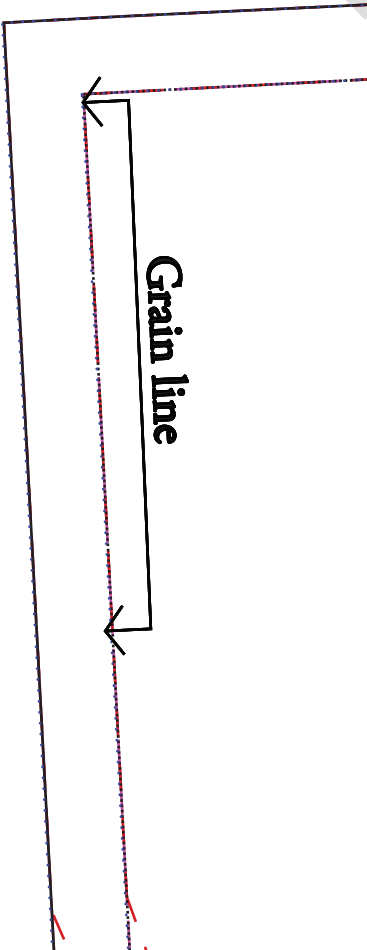
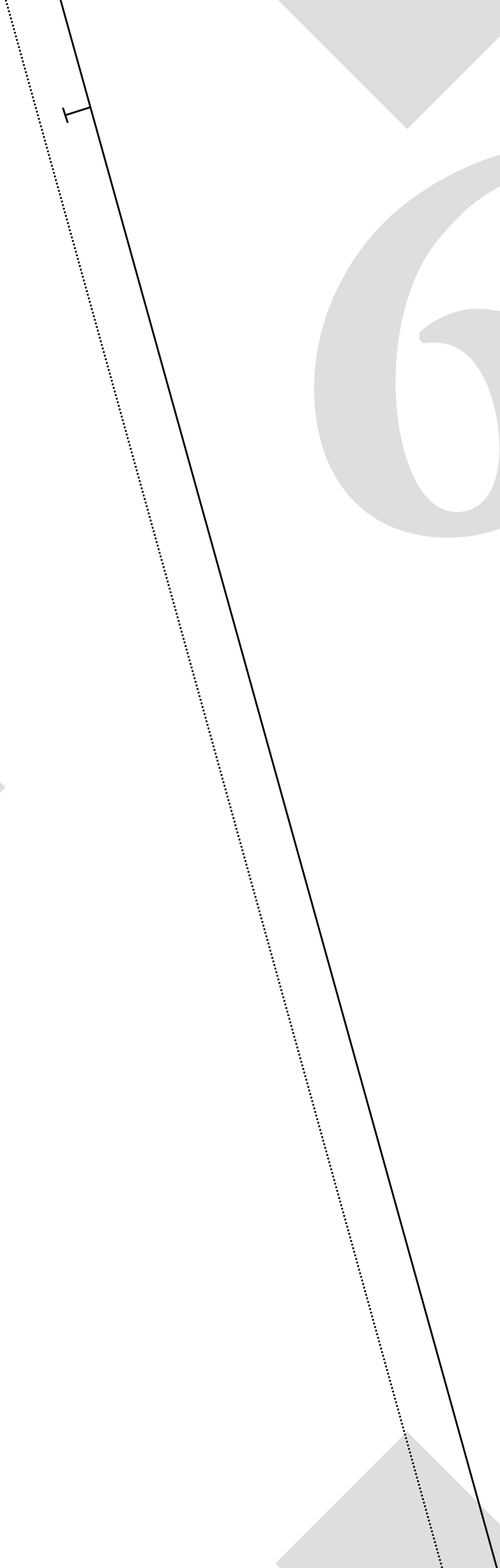




← **Optional Leg
Split notch**



6



NECKLINE LINE KEY:

Boat Neck Front:



V Front:



Standard Square Front:



Fold Line / Grain line



NECKLINE LINE KEY:

Boat Neck Front:



V Front:



Standard Square Front:



Deep Square Front:



Details:

Cut x1 Pair (x2 pieces in total)
Seam Allowance included:
1cm (3/8")

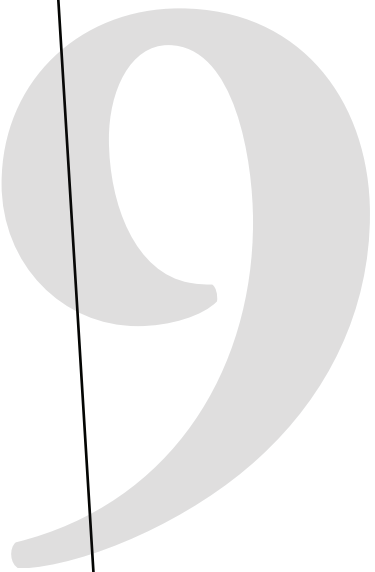
ROSSI WRAP

DEEP SQUARE NECK SHOULDER TIE

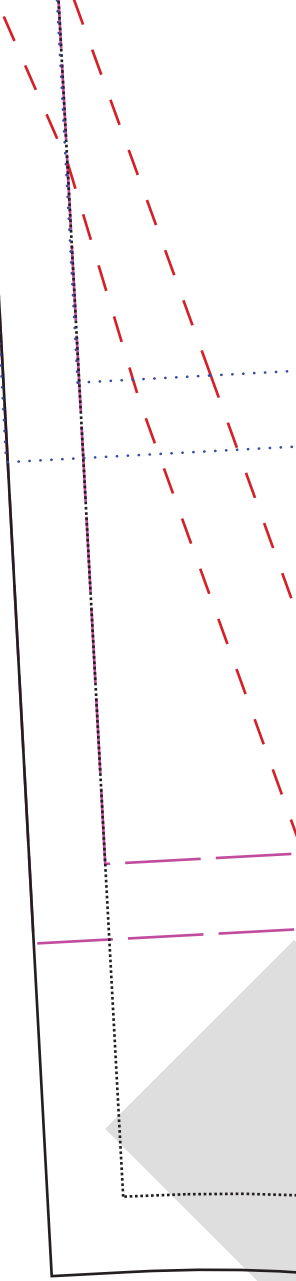
Cut x4

Seam Allowance included: 1cm (3/8")

Grain Line



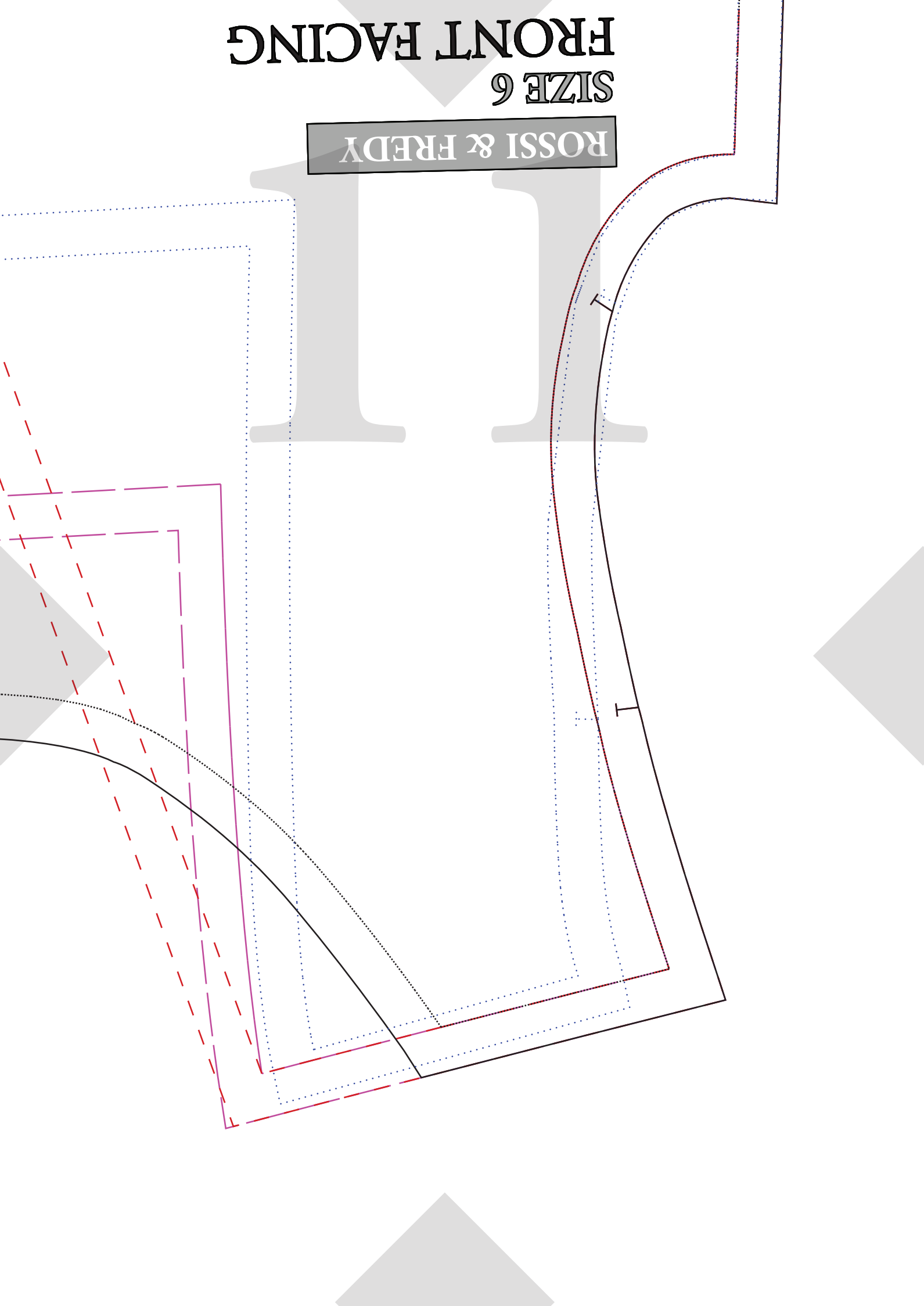
10



FRONT FACING

SIZE 6

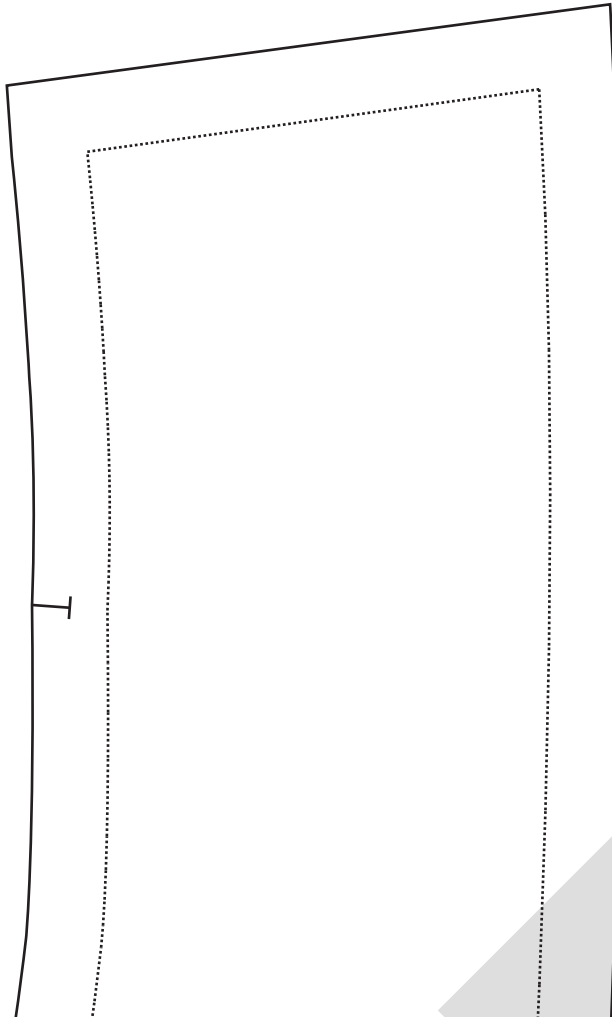
ROSSI & FREDY

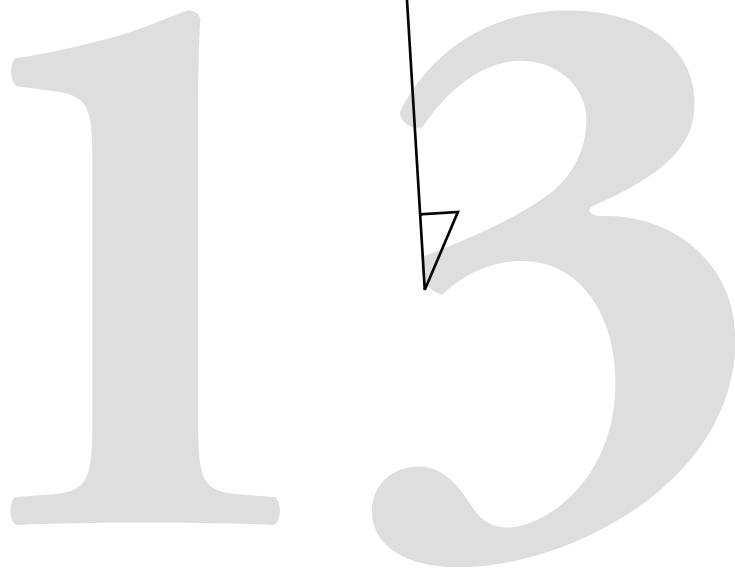


1

2

Grain Line



A large, light gray number '13' is centered at the top of the page. A small black triangle points to the right side of the number '3'.

13

For Height 150 - 160cm

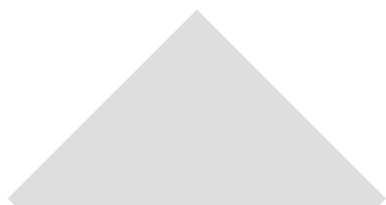
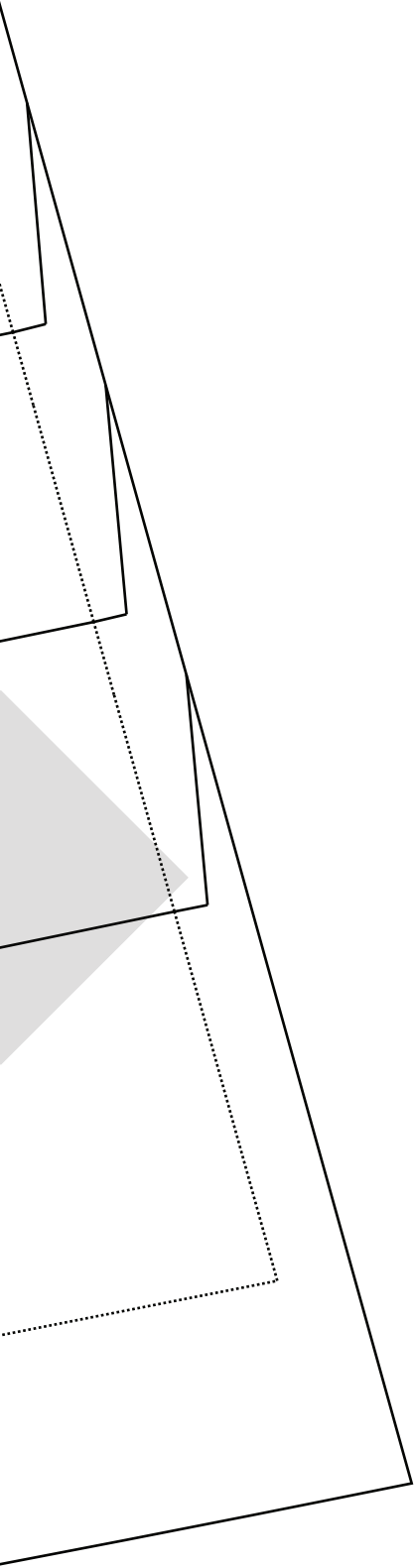
For Height 161 - 170cm

For Height 171cm+

For Height 171cm+ (Extra Long)

14

15



ROSSI & FREDY

SIZE 6

**CENTRE
FRONT MAIN #2**

Deep Square Neckline

Details:

Connect Pattern Piece to
CFront #1 at notches below.

Once connected:

Refer to CENTRE FRONT #1
for cutting instructions

Seam Allowance included:

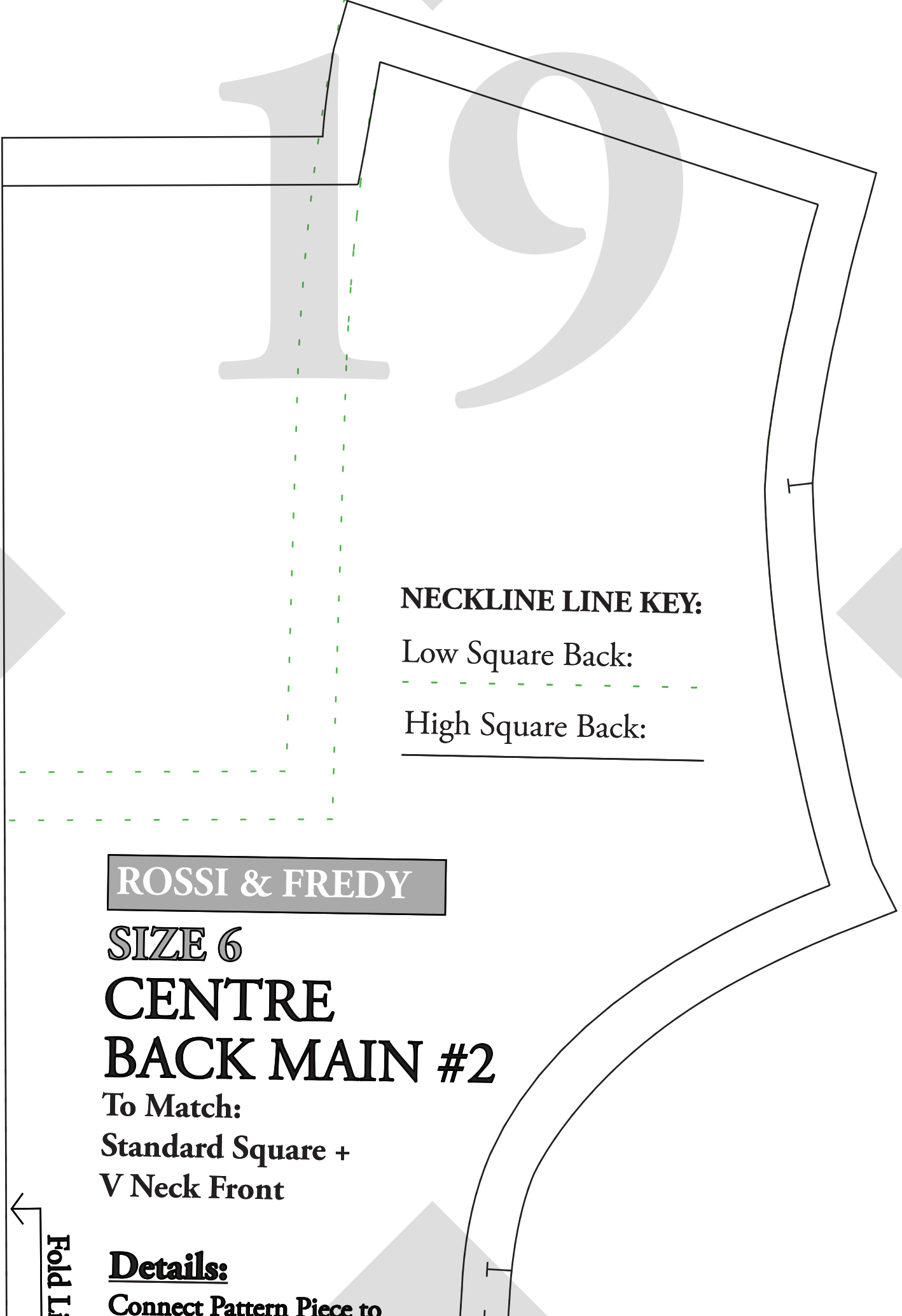
1cm (3/8")

Fold Line / Grain line

17

ROSSI & FREDY

18



NECKLINE LINE KEY:

Low Square Back:



High Square Back:



ROSSI & FREDY

SIZE 6

CENTRE

BACK MAIN #2

To Match:

Standard Square +

V Neck Front

←
Fold Li

Details:

Connect Pattern Piece to

ROSSI & FREDY

SIZE 6

CENTRE BACK MAIN #2

Low Square back
To Match:
Deep Square Front

Details:

Connect Pattern Piece to
CBack #1 at notches below.

Once connected:

Refer to CENTRE BACK #1
for cutting instructions

Seam Allowance included:
1cm (3/8")

Fold Line / Grain line

^TO MATCH

DEEP SQUARE BACK

BACK BODICE OPTION

SIZE 6

CENTRE FRONT MAIN #1

Details:

Connect Pattern Piece to CF #2
at notches at top of pattern piece

Once connected:

Cut x1 on FOLD

Seam Allowance included: 1cm (3/8")

← Optional Leg
Split notch



SIZE 6

CENTRE BACK MAIN #1

Details:

Connect Pattern Piece to CB #2
at notches at top of pattern piece

Once connected:

Cut x1 on FOLD

Seam Allowance included: 1cm (3/8")



ne / Grain line

CBack #1 at notches below.

Once connected:

Refer to CENTRE BACK #1
for cutting instructions

Seam Allowance included:

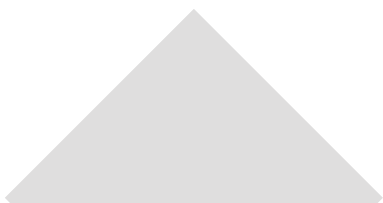
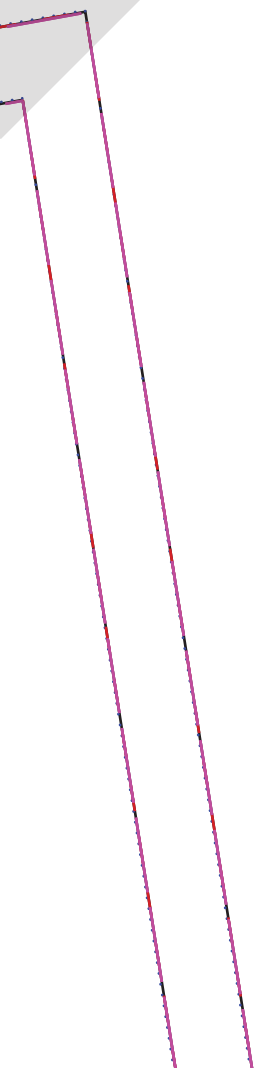
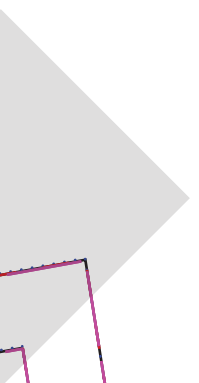
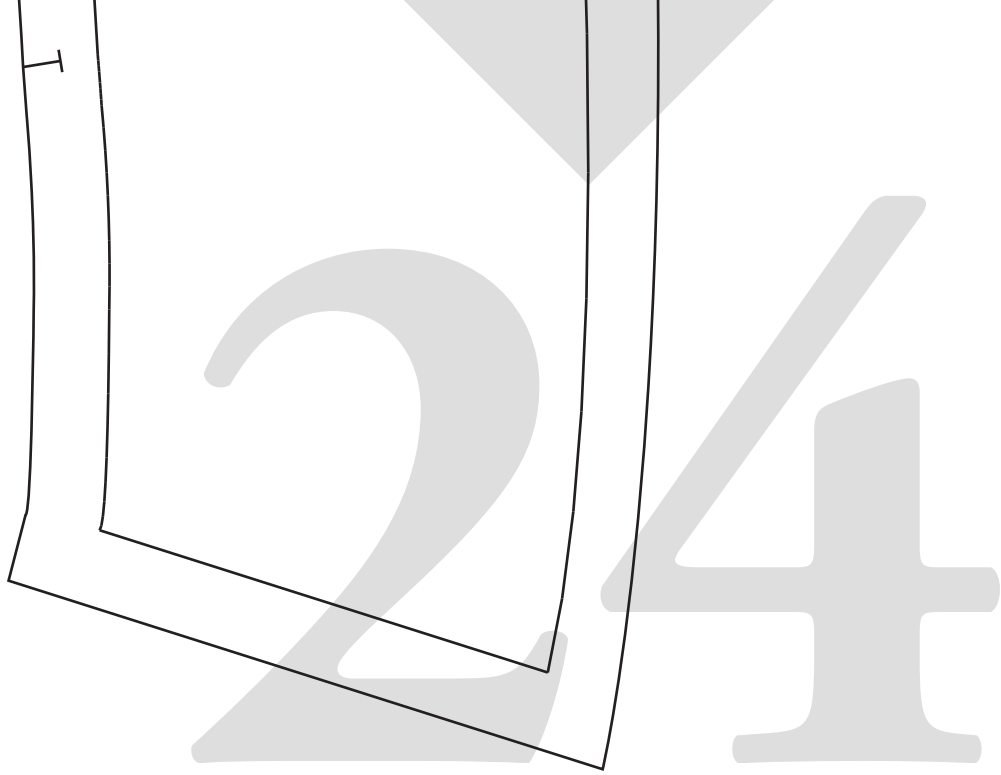
1cm (3/8")

^ TO MATCH STANDARD SQUARE & V NECK FRONT BACK BODICE OPTIONS

Details:
Cut x1 Pair (x2 pieces in total)
Seam Allowance included:
1cm (3/8")

Grain line

NECKLINE LINE KEY:
For Boat Neck Front: Low Square Neck
For V Neck + Standard Square Front: Low Square Neck
For V Neck + Standard Square Front: High Square Neck
For Deep Square Front: Low Square Neck

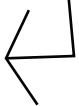


25

Fold Line / Grain line



Fold Line / Grain line

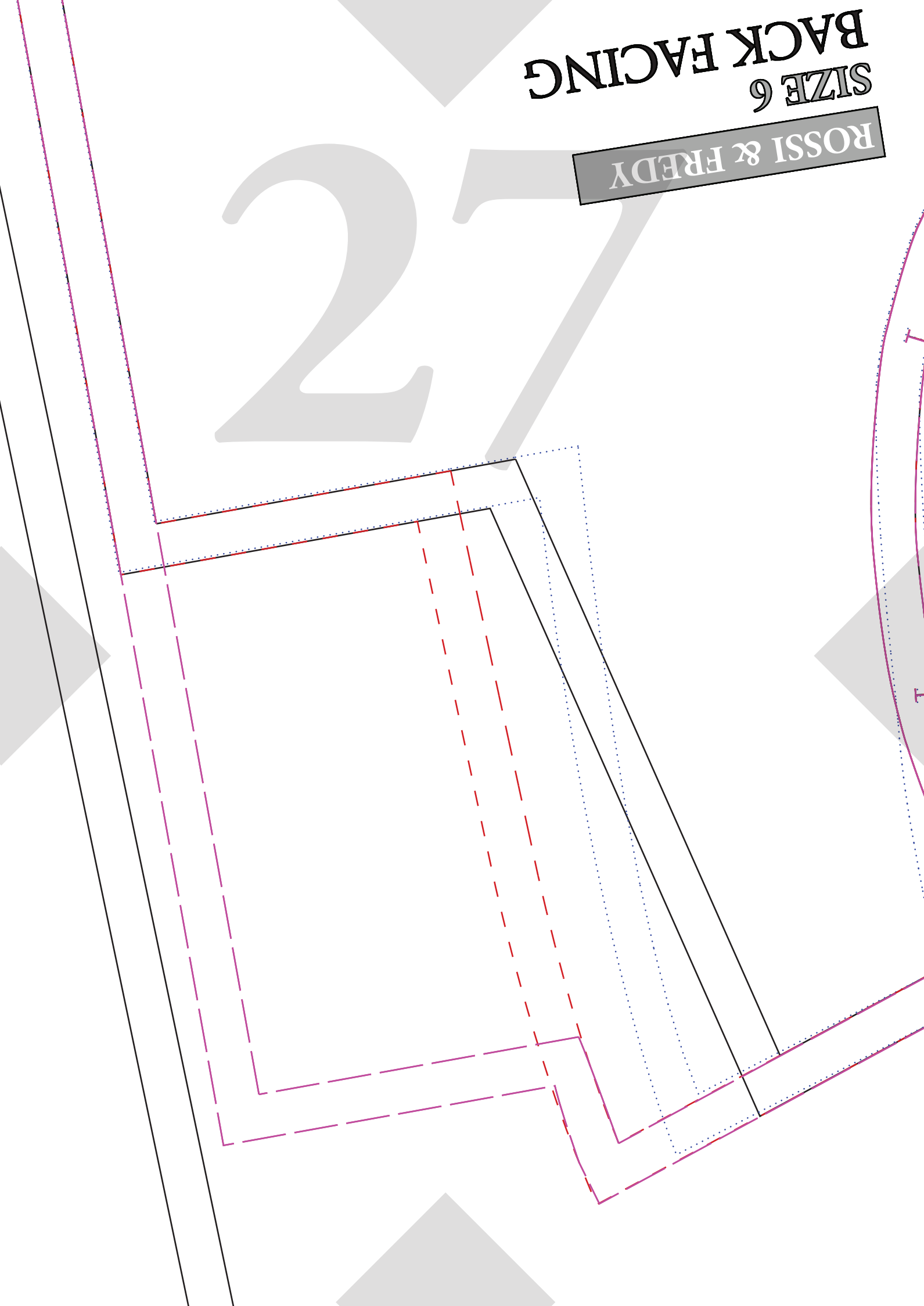


26

BACK FACING
SIZE 6

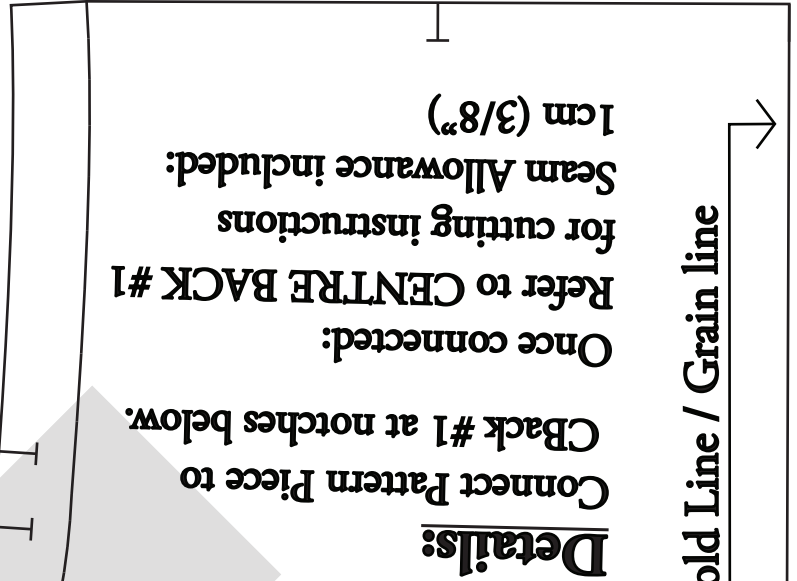
ROSSI & FREDY

27



28

∨ TO MATCH BOAT NECK FRONT BACK BODICE OPTION





29

For Height 150

For Height 16

For Heig

For Height 171cm

30

- 160cm

For Height 150 - 160cm

1 - 170cm

For Height 161 - 170cm

ght 171cm +

For Height 171cm+

+ (Extra Long)

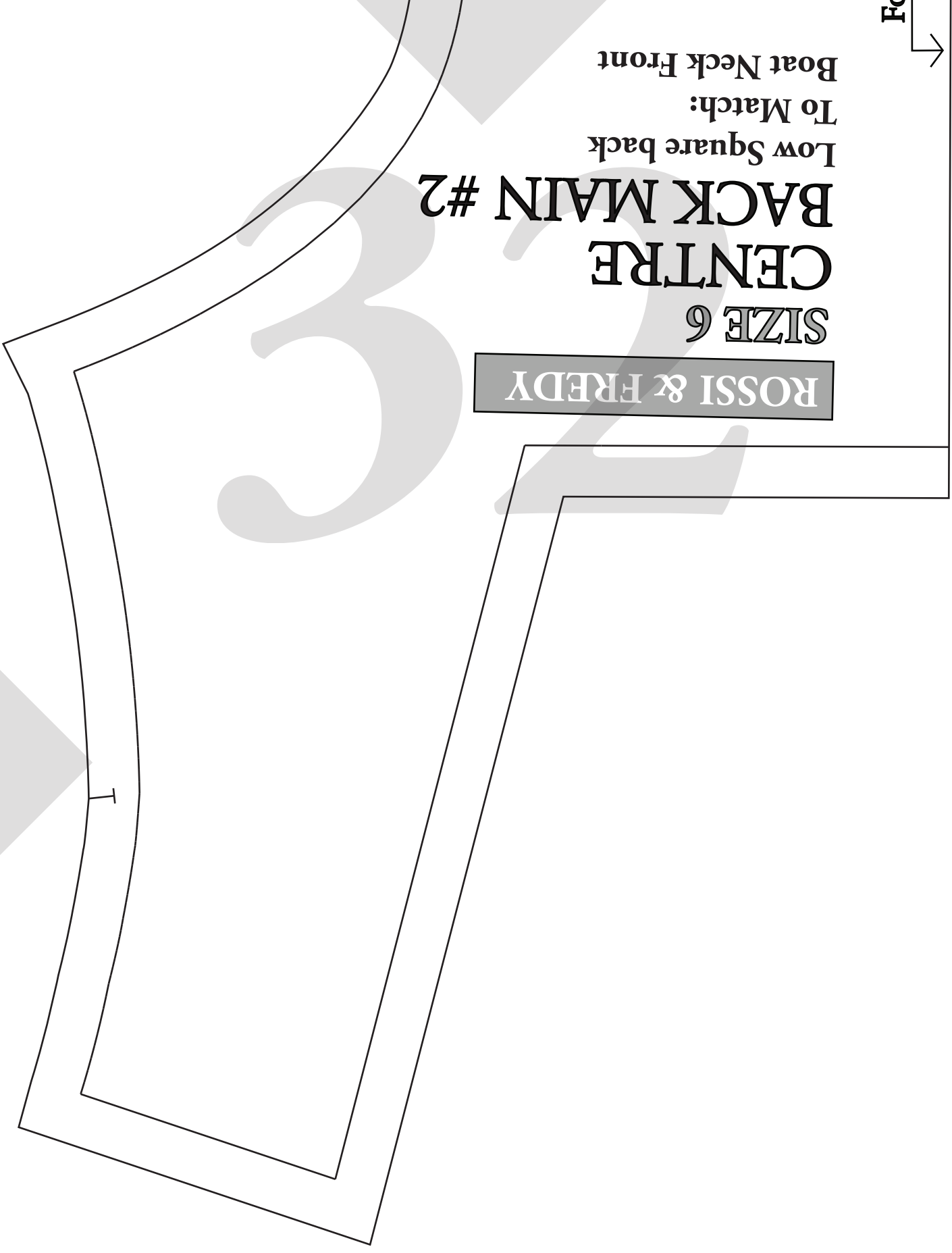
For Height 171cm+ (Extra Long)

31

Boat Neck Front
To Match:
Low Square back

CENTRE SIZE 6 BACK MAIN #2

ROSSI & FREDY



33



3

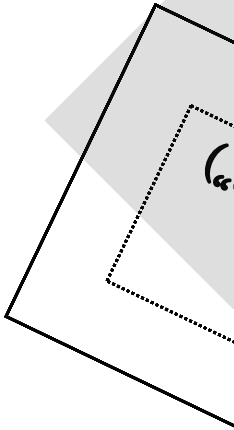
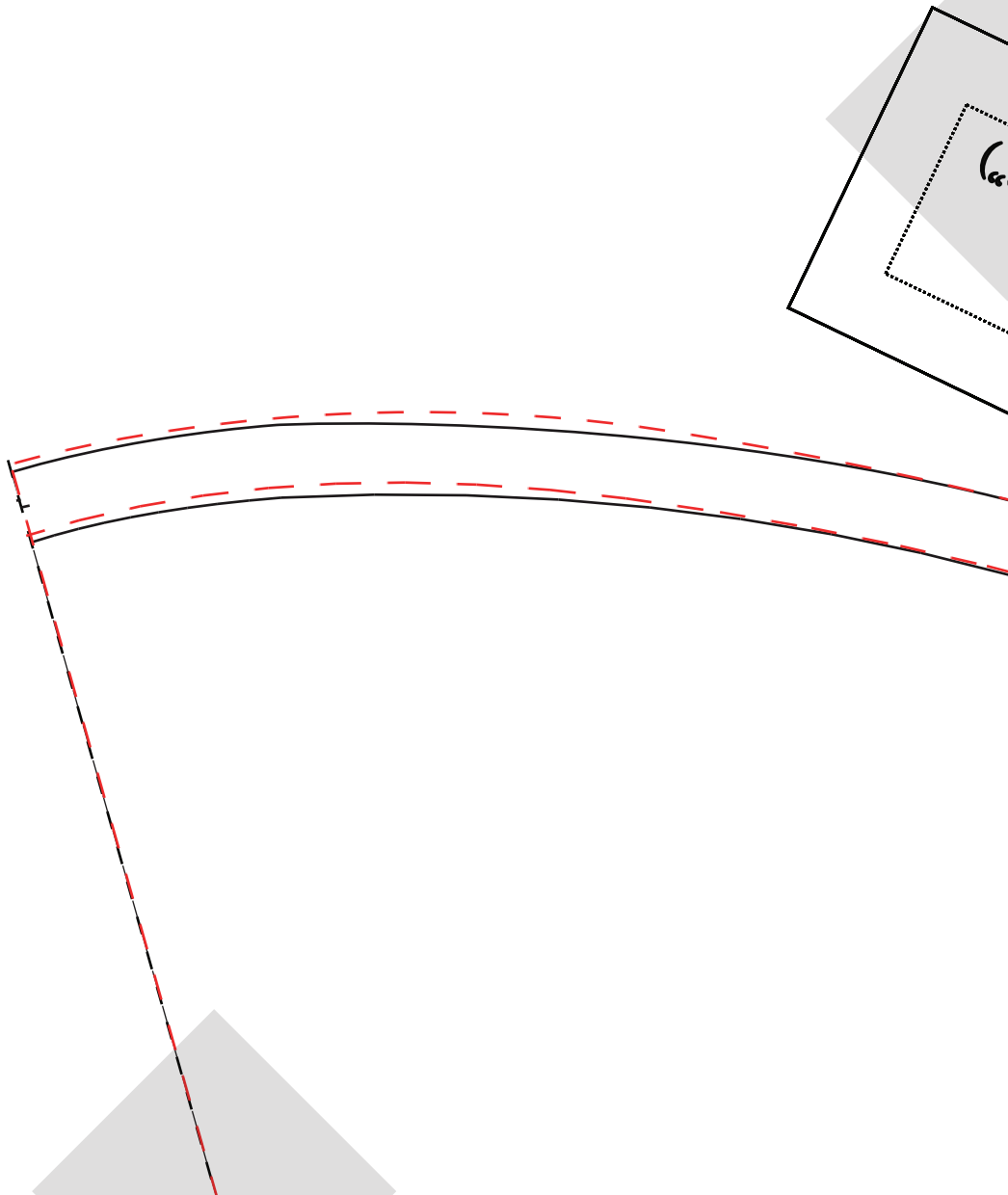
ROSSI & FREI

SIZE 6

SHORT PUFF
SLEEVE CUFF

Fold Line

Grain Line

A rectangular diagram representing a fabric piece. It features a solid top and bottom edge and a dashed middle line. A vertical line with arrows at both ends is labeled "Fold Line". A horizontal line with arrows at both ends is labeled "Grain Line".

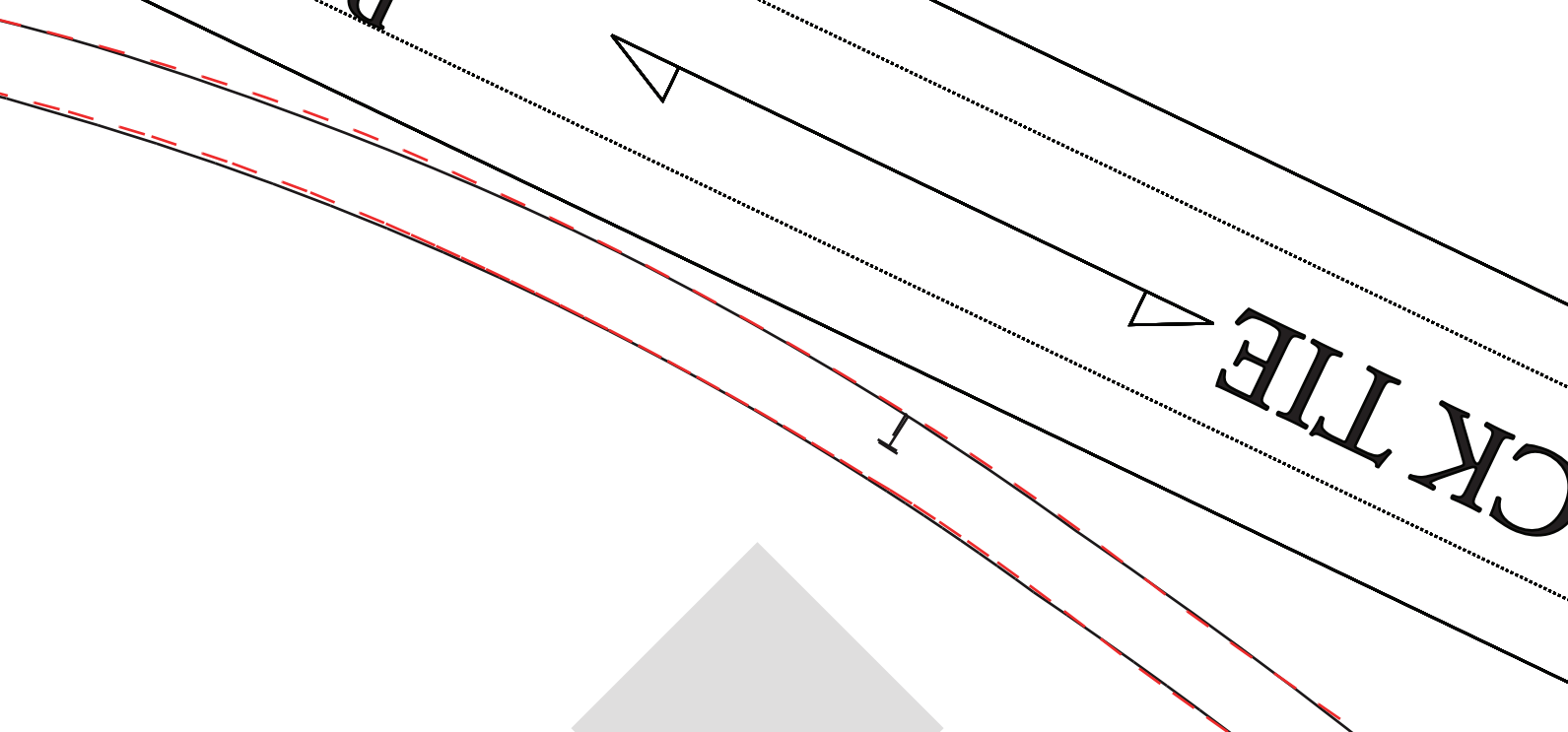
BY

35

Details:
Cut x2 on Fold
(Measure upper arm to compare
See beginning of sewing instructions)
Seam Allowance included: 1cm (3/8")

Details:
Cut x 2
Seam Allowance: 1cm (3/8")

CK TIE



ROSSI & FREDY

POCKET BAG

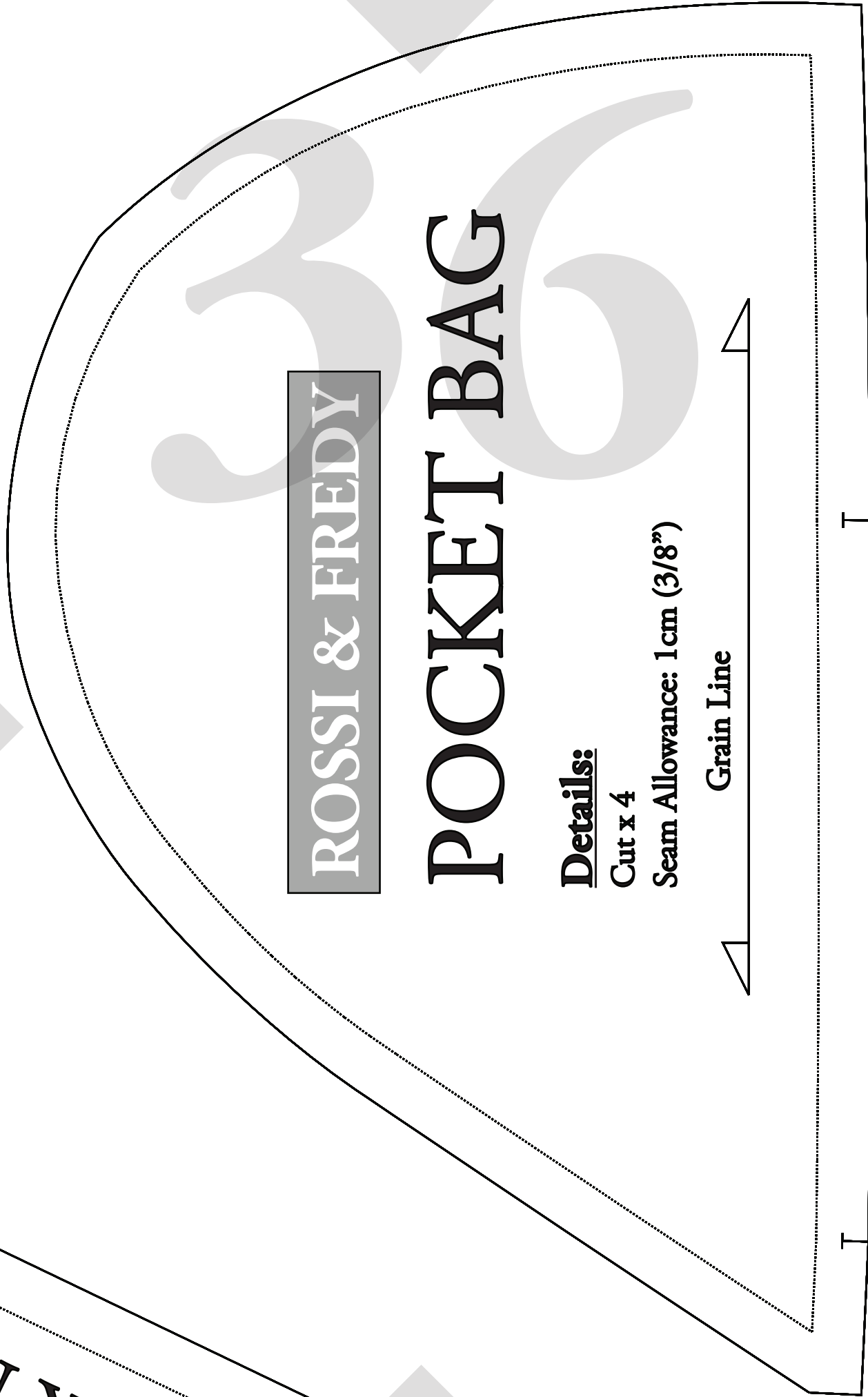
Details:

Cut x 4

Seam Allowance: 1cm (3/8")

Grain Line

BACK NECK



ROSSI & FREDY

SIZE 6

SIDE BACK #1

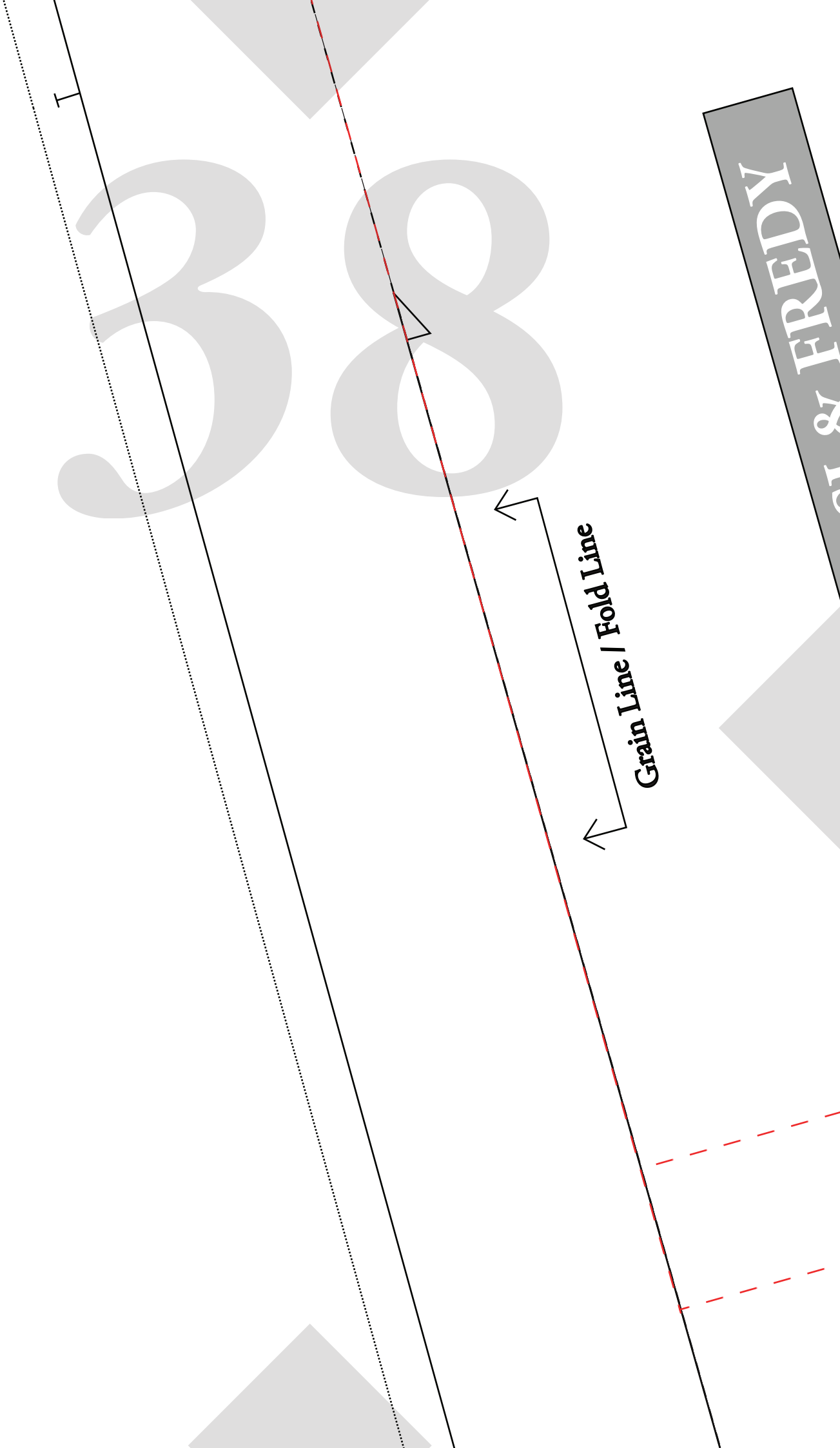
Details:

**Connect Pattern Piece to #2
at notches at top of pattern piece**

Once connected:

Cut x 1 Pair (2 pieces all up)

Seam Allowance included: 1cm (3/8")



I

38

Grain Line / Fold Line

at & FREDY

ROSSI &

SIZE 6

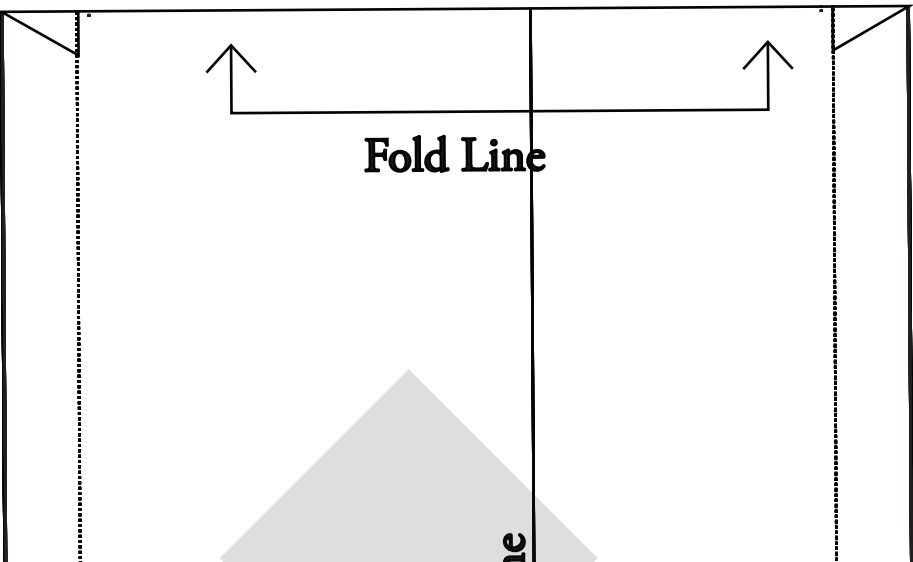
SHORT PUFF SLEEVE

Details:
Cut x 2 on fold
Seam Allowance included: 1cm (3/8")

LINE KEY

SHORT PUFF SLEEVE:

ROSSI & FREDY



Fold Line

ne

41

Grain Line

A diagram consisting of a horizontal line with arrows at both ends, pointing left and right. The text "Grain Line" is written vertically above the line, centered between the arrows.

42



Grain Line / Fold Line

ROSSI & FREDY

SIZE 6
LONG SHIRRED
SLEEVE

Details:

Cut x 2 on fold

Seam Allowance included: 1 cm (3/8")

LINE KEY

LONG SHIRRED:

ROSSI & FREDY

SCRUNCHIE

Details:

Cut x 1 on fold

Seam Allowance included: 1cm (3/8")

Grain Line



45

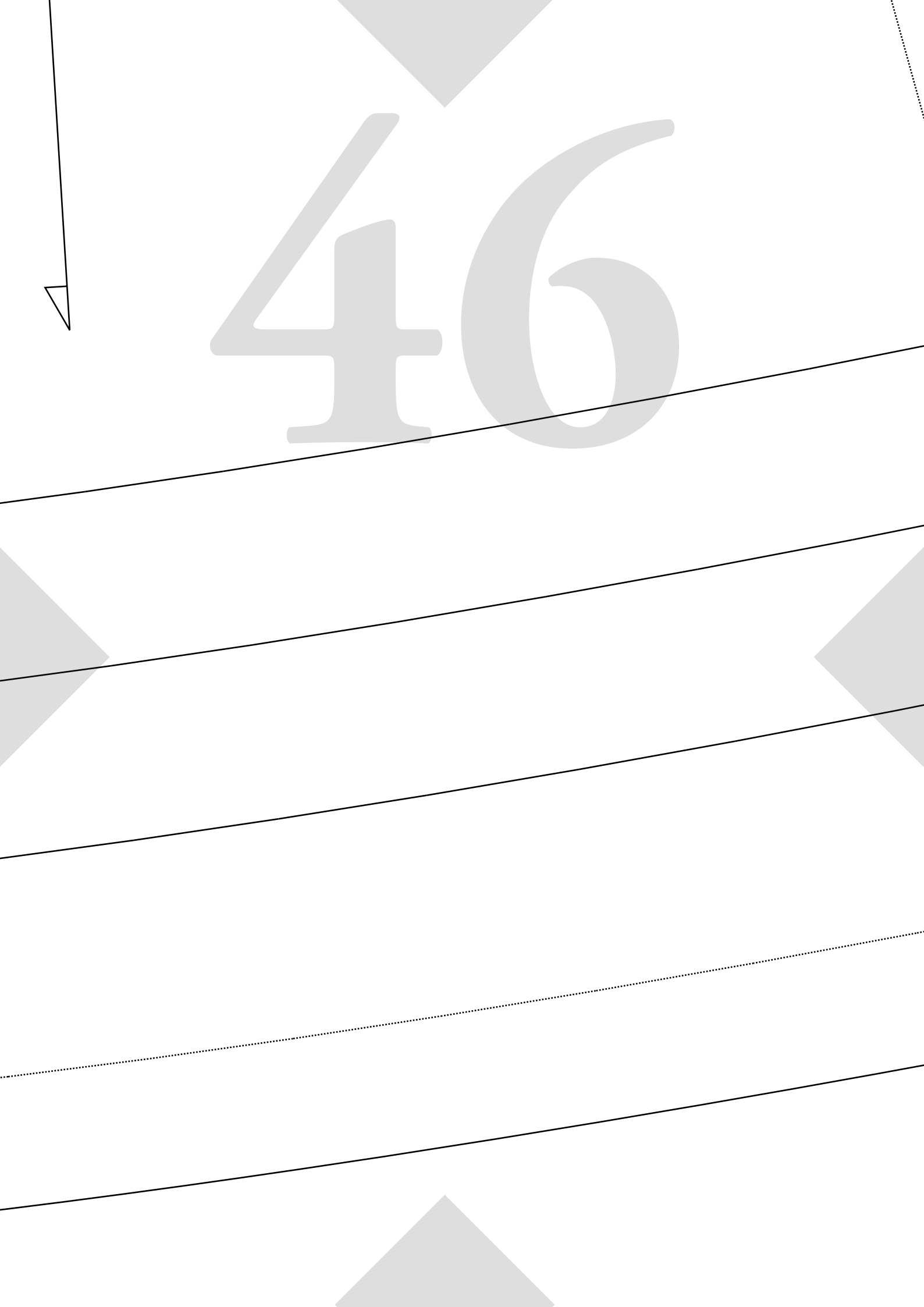
For Height 150 - 160cm

For Height 161 - 170cm

For Height 171cm+

For Height 171cm+ (Extra Long)

46



FREDY / ROSSI WRAP

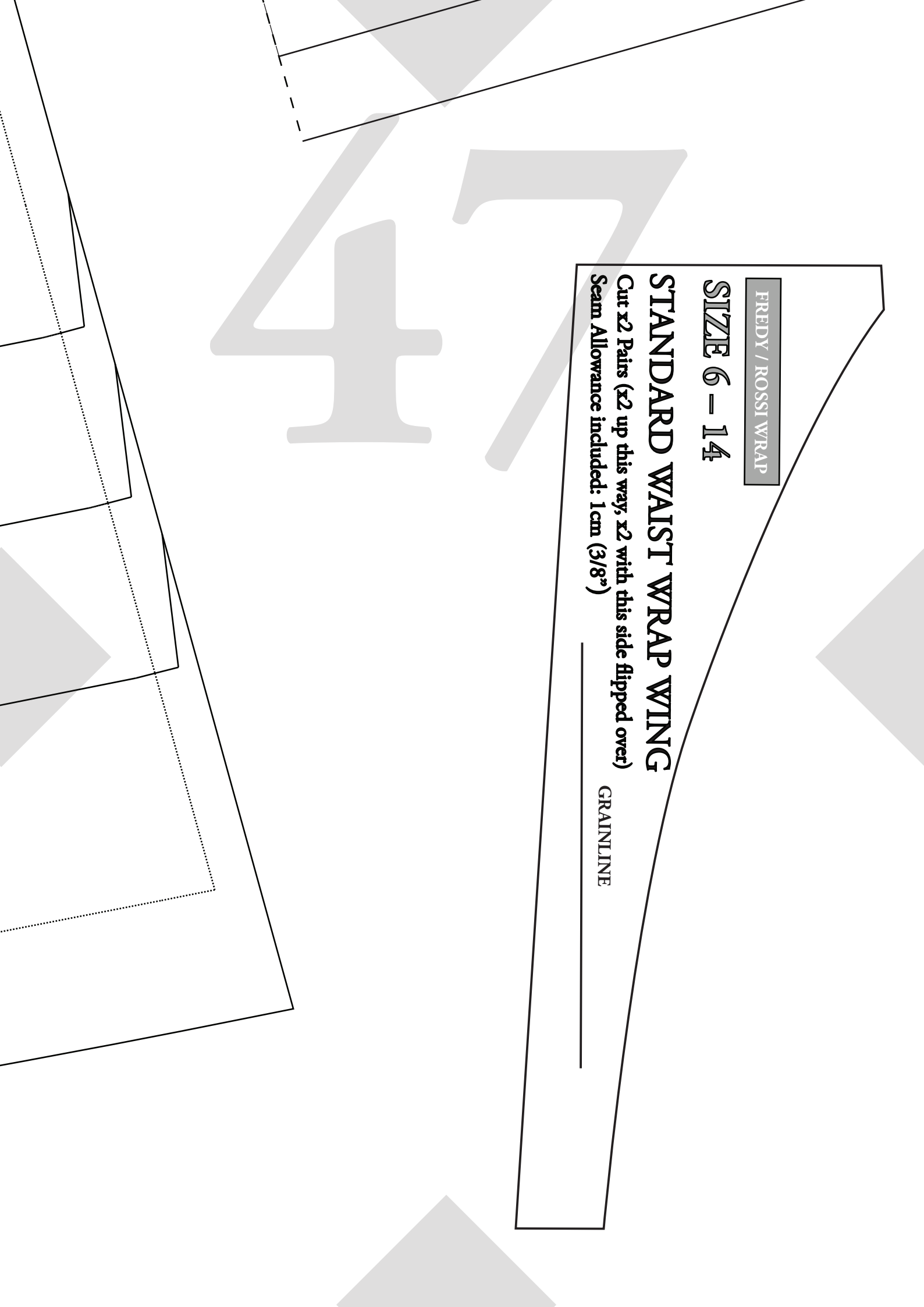
SIZE 6 - 14

STANDARD WAIST WRAP WING

Cut x2 Pairs (x2 up this way, x2 with this side flipped over)

Seam Allowance included: 1cm (3/8")

GRAINLINE



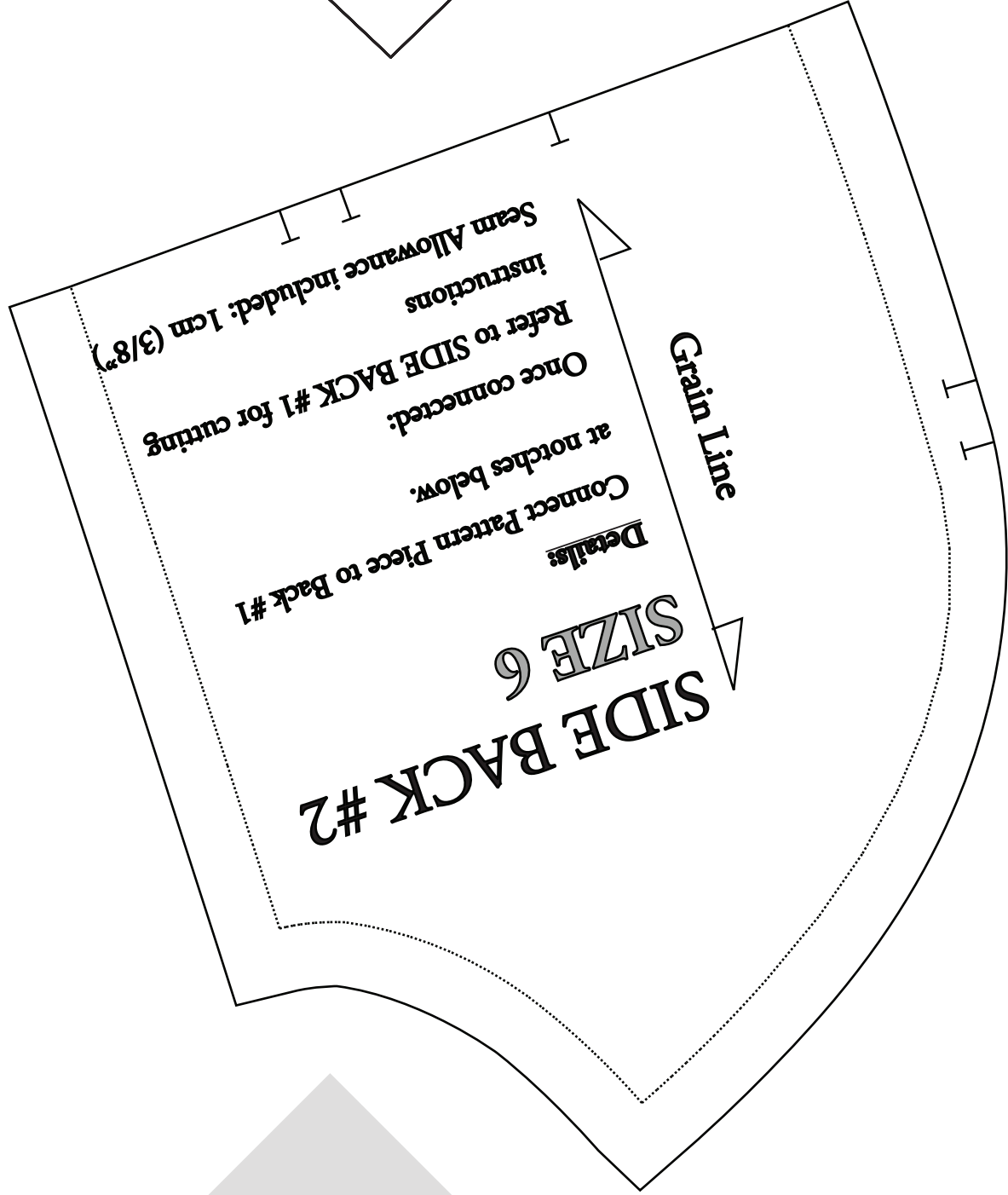
ROSSI &

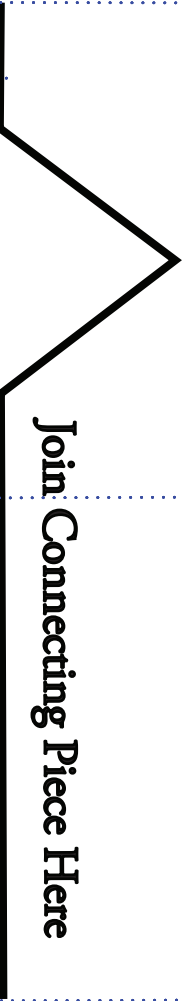
HEAD

Details:

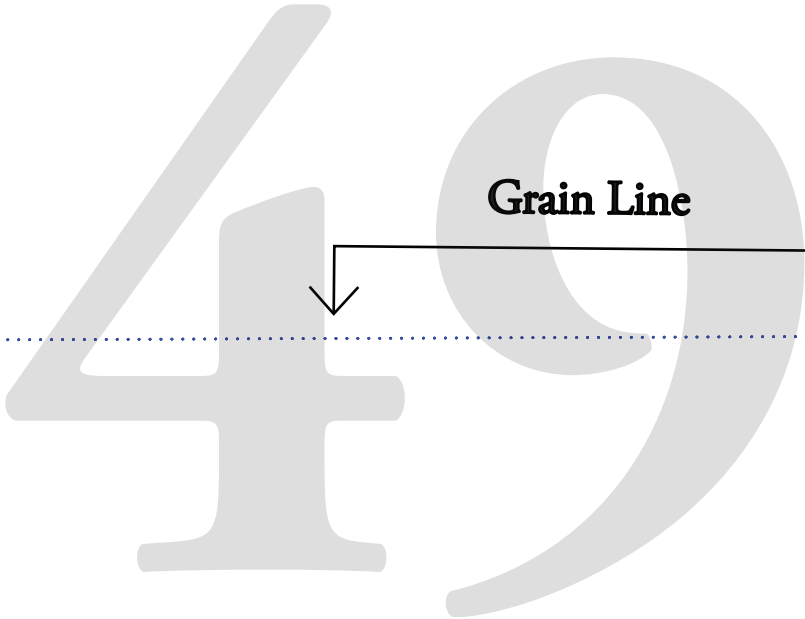
Cut x 1 on fold. Inc

Seam Allowance inc

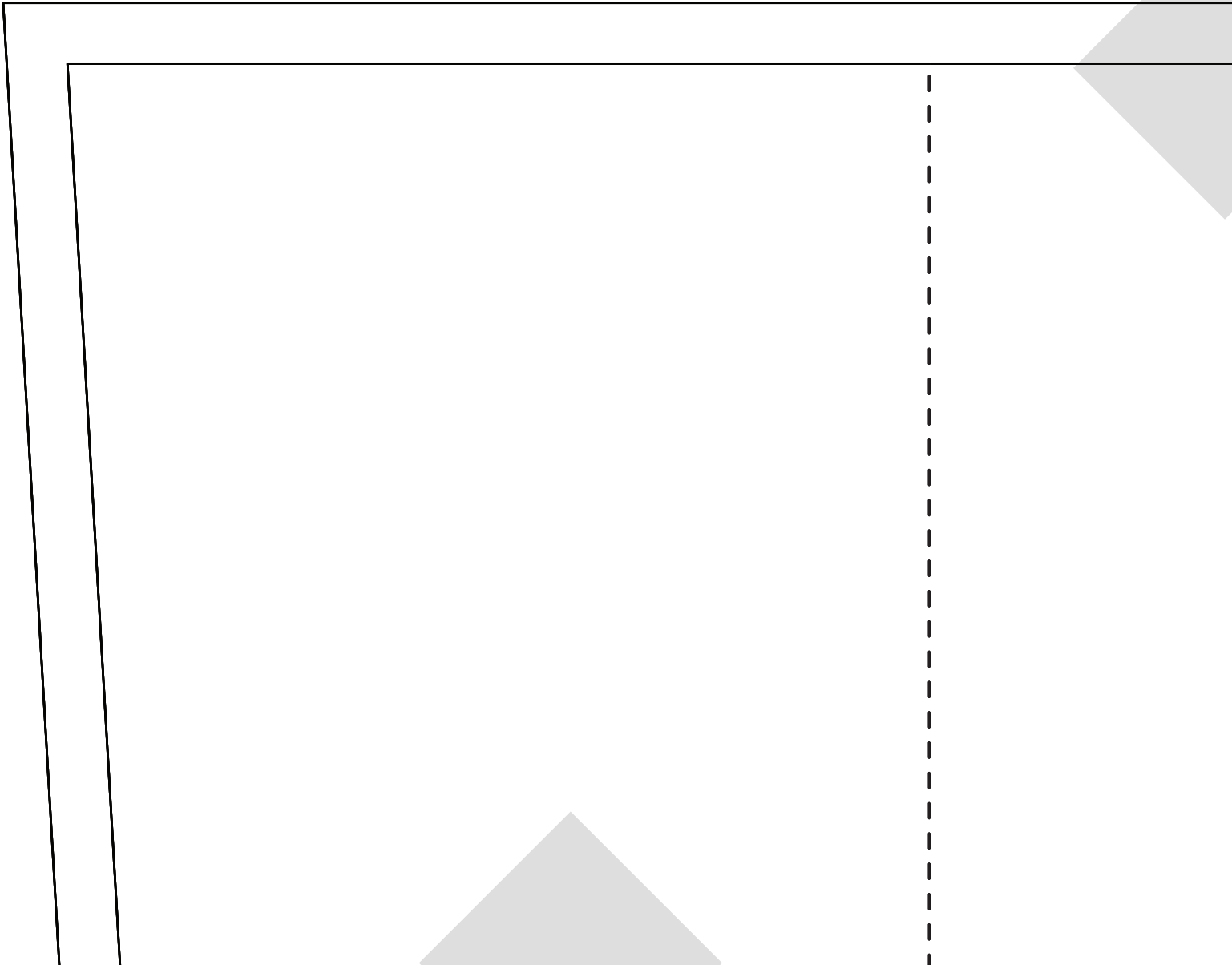




Join Connecting Piece Here



Grain Line



SIZE 6 - 14

TWO TONE WAIST WRAP

#2

Details:

Connect Pattern Piece to #1

See Wrap #1 once connected

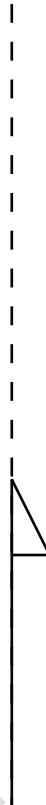
for cutting instructions

Seam Allowance included: 1 cm (3/8")

51

52

Join Connecting Piece Here



53

Grain Line / Fold Line

ROSSI & FREDY

SIZE 6 - 14

STANDARD

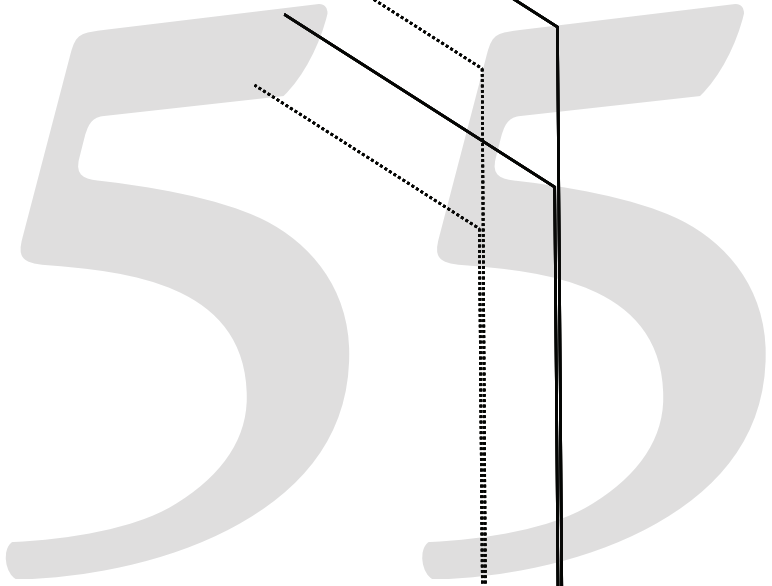
THU

54

ROSSI & FRE

SIZE 6 - 14

STANDARD



Grain Line / Fold Line

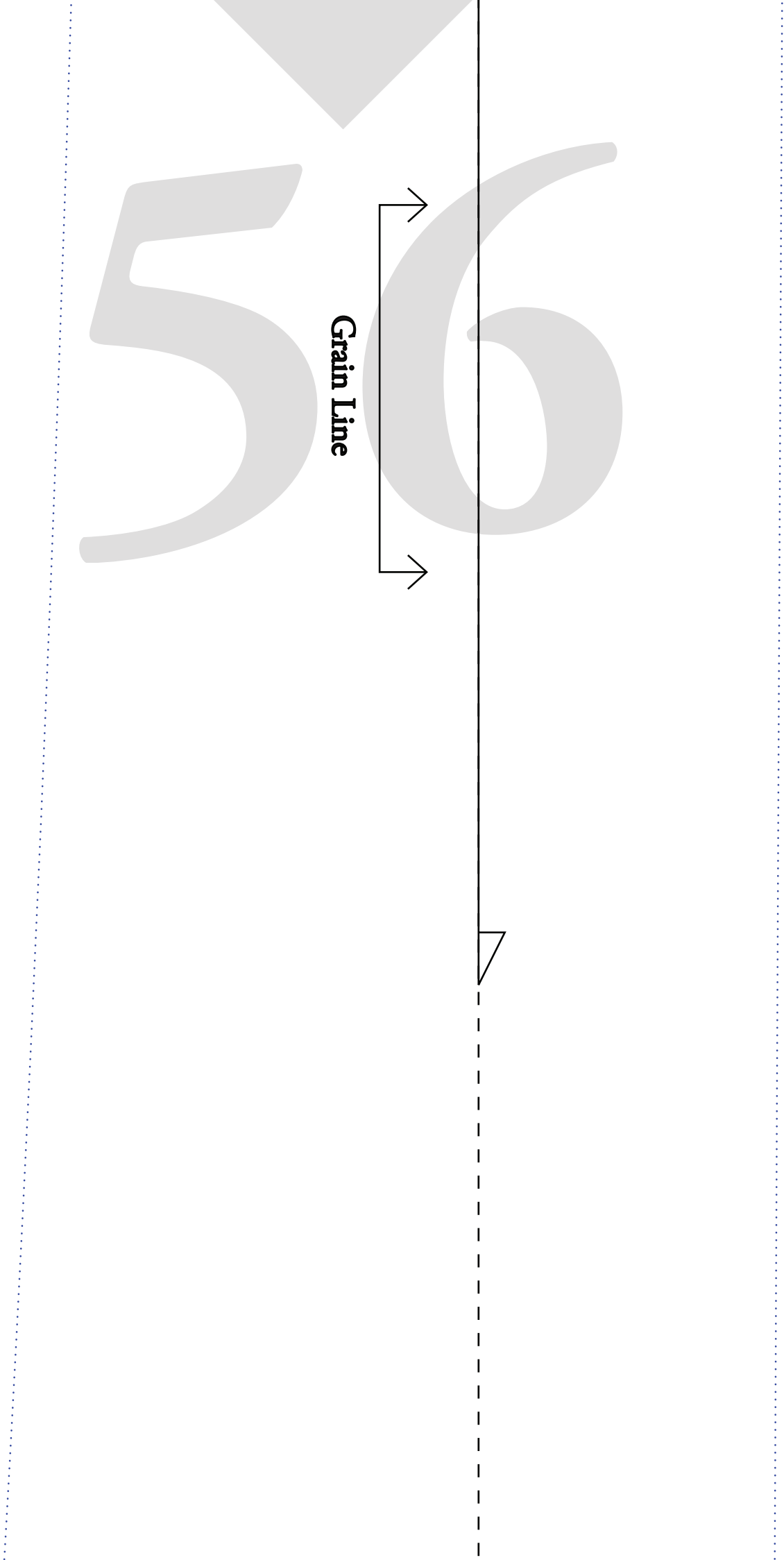


RDY

RD, THIN

56

Grain Line



STANDARD + TH WAIST WRAP #1

Details:

Connect Pattern Piece to #2

Once connected:

Cut x 2

Seam Allowance included: 1cm (3/8")



Join Connecting Piece Here

IN

STANDARD WAIST W

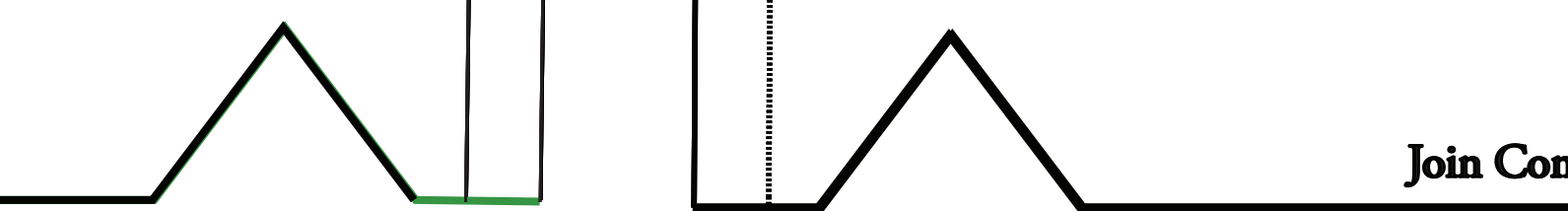
58

Details:

Connect Pattern Piece to #1

See Wrap #1 once connected for c

Seam Allowance included: 1cm (3



Join Con

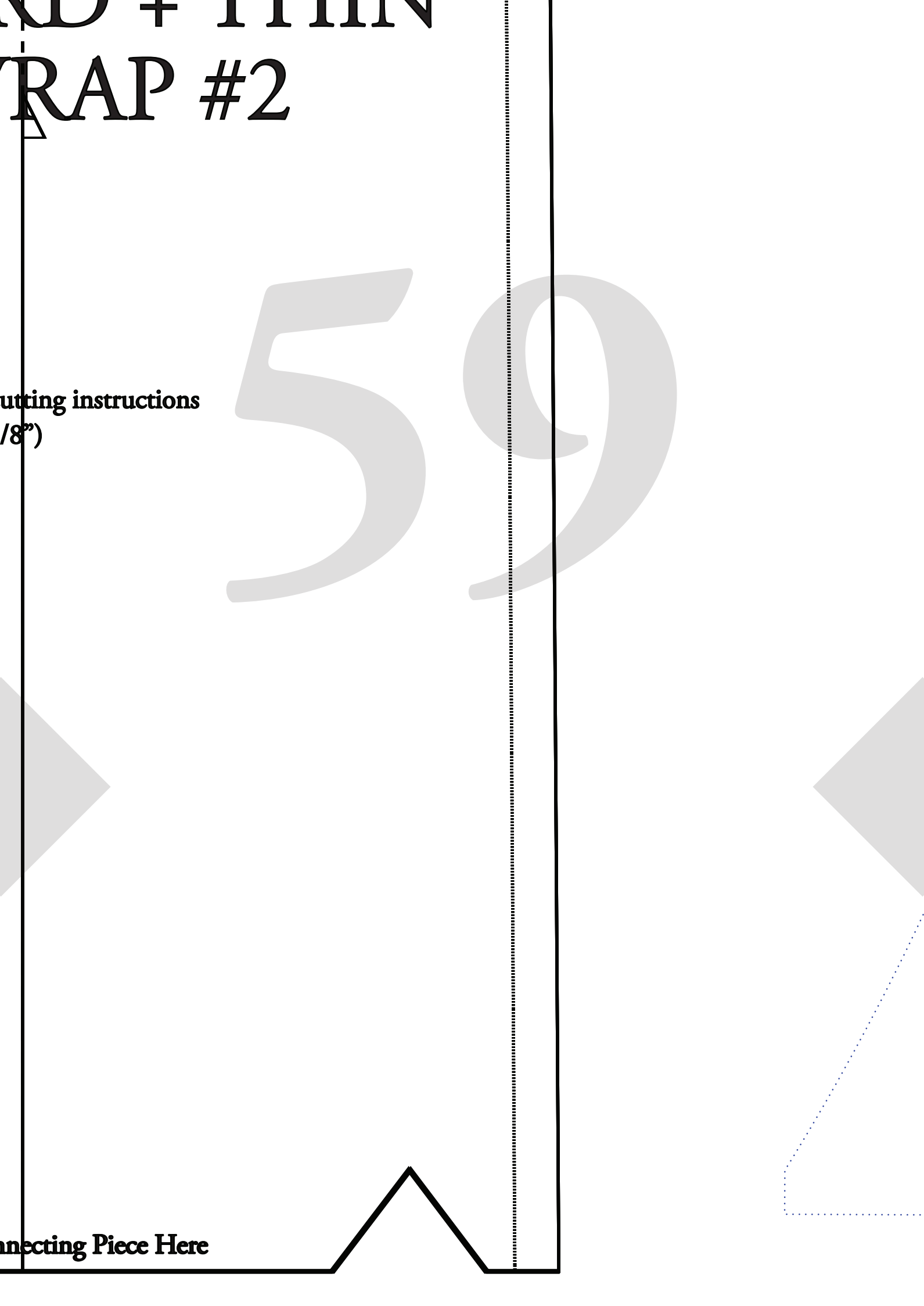
WOOD + THIN

TRAP #2

Cutting instructions
(1/8")

50

Connecting Piece Here



ROSSI & FREDY

SIZE 6 – 14

TWO TONE WAIST WRAP #1

Details:

Connect Pattern Piece to #2

Once Connected :

Cut x 2 in Primary Colour (one pair)

Cut x 2 in Secondary Colour (one pair)

Seam Allowance included: 1cm (3/8")