

A4 PRINTING INSTRUCTIONS

Before you get started on creating your Rossi of Fredy Wrap, make sure to read the below notes so that you can make sure your printer is calibrated and prints the patterns to the correct size.

Before you begin, please make sure you are printing on A4 paper with an A4 printer, not letter paper as the small difference in the paper size can mean your patterns don't print correct. A4 measures 210 x 297mm

1. Select Layers / styles:

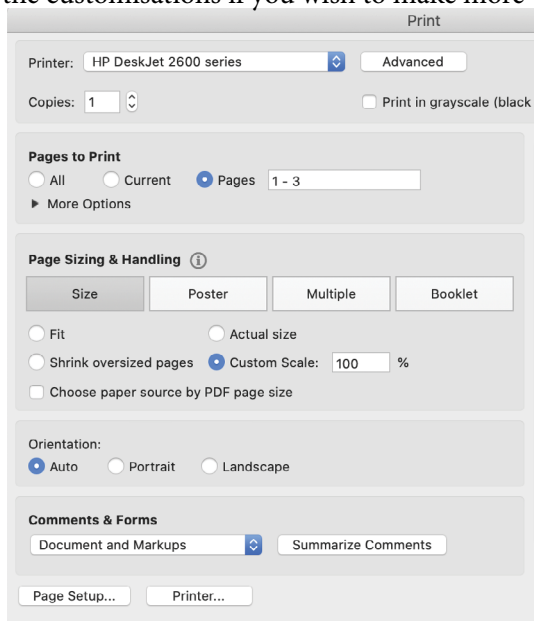
Make sure you have gone through the PDF and selected all necessary layers + Customisations that you need for your Rossi / Fredy Wrap in instructions. You can print out all the customisations if you wish to make more variations in future.

2. Print the first three pages as a test print:

We strongly suggest printing the first three pages as a test to make sure everything is set up correctly, to save time, paper and the environment.

When printing in Adobe Acrobat, do as follows:

- File > Print
- Select your printer
- Click 'Pages' and then type '1 - 3' (for test print)
- Click 'Custom Scale' and type '100%'
- Click 'PRINT'

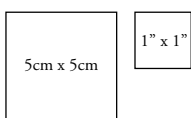


3. Calibrate and measure

When printing, although you would've selected '100%', most common household printers will print with a white border. Don't worry, this won't affect measurements and you **SHOULD NOT** trim the borders. However, to check this is correct for your printer – we have provided two tests of calibration squares.

3a: Single Square Calibration

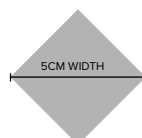
On the first pattern page, you will see a 5x5cm square and a 1"x1" square. Using your ruler, measure these squares to make sure they (along with your patterns) have printed to the correct scale.



Note: These calibration squares are an example only and are not printed to scale.

3b: Across-Page Diamond Calibration

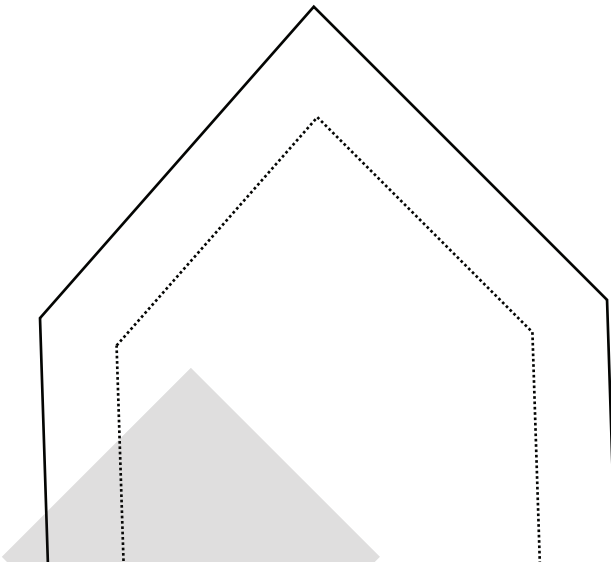
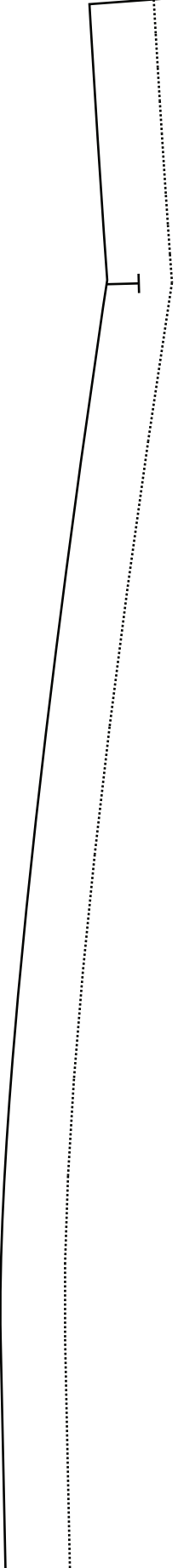
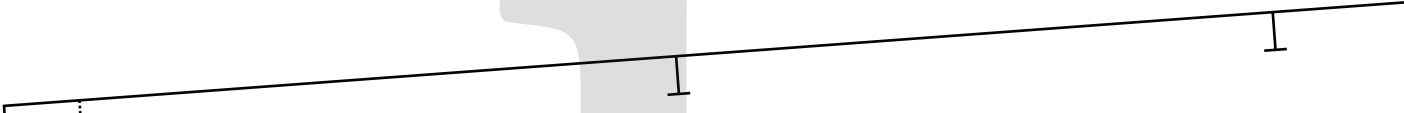
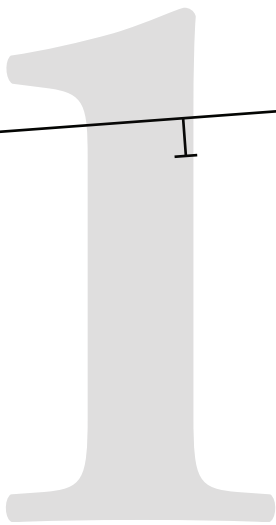
You will then see a grey diamond split across the first two pattern pages (similar to the below example). Simply measure from one corner of the diamond to the other corner. This should measure 5cm from left point to right point.



Note: This diamond is an example only and is not printed to scale.

4. You're all set and ready to go!

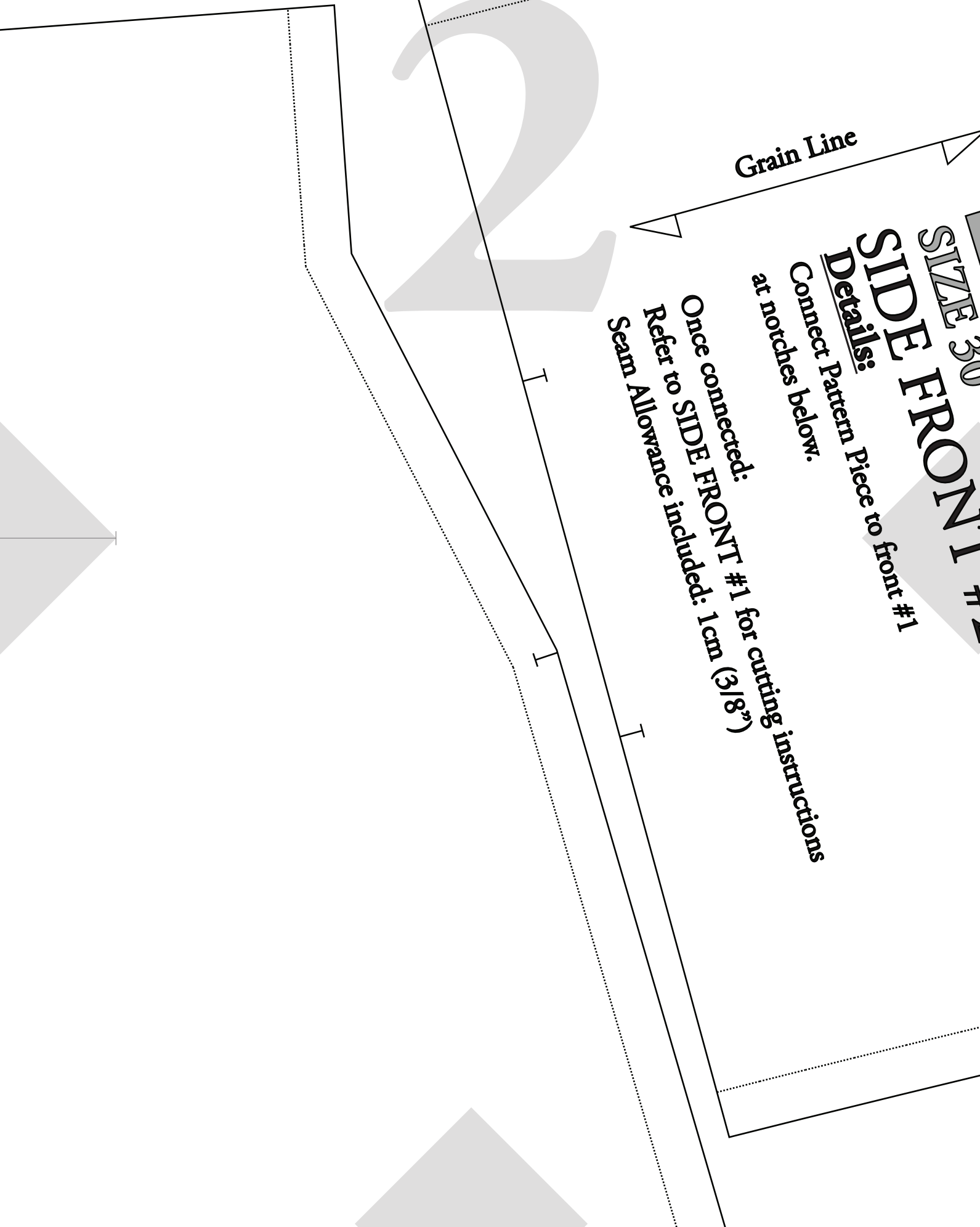
Once you have successfully tested and printed the first couple of pages, and double-checked the calibration as per steps 3a and 3b, you're all set to go!



Grain Line

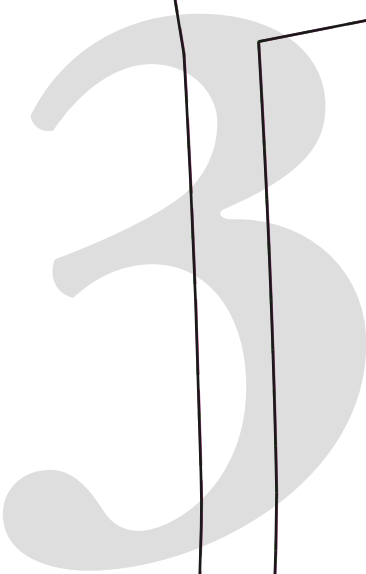
SIZE 30
SIDE FRONT #1
Details:
Connect Pattern Piece to front #1
at notches below.

Once connected:
Refer to **SIDE FRONT #1** for cutting instructions
Seam Allowance included: 1cm (3/8")



ROSSI & FREDY

SIZE 30
PATTERN #2



ROSSI & FREDY

SIZE 30

CENTRE
FRONT MAIN #

Details:

Connect Pattern Piece to
CFront #1 at notches below.

Once connected:
Refer to CENTRE FRONT #
for cutting instructions
Seam Allowance included: 1cm

N
B
—
V

t h e b o l d o n e

Fredy Wrap + Rossi Wrap – Size 30

© The Bold One Workshop Patterns.
These patterns are copyrighted by
The Bold One Patterns and may not
be copied, shared, or resold.

Reproducing this pattern to sell items
commercially is prohibited.

Seam allowance = 1cm (3/8")

Use the following boxes to check
pattern has been printed to correct scale.

5cm x 5cm

1" x 1"

NECKLINE LINE KEY:

Coat Neck Front:

7 Front:

← Optional Leg
Split notch

ROSSI & FREDY

DEEP SQUARE NECK SHOULDER TIE

Cut x4

Seam Allowance included: 1cm (3/8")



ROSSI & FREDY

SIZE 30

SIDE FRONT #1

Details:

**Connect Pattern Piece to #2
at notches at top of pattern piece.**

Once connected:

Cut x 1 Pair (2 pieces all up)

Seam Allowance included: 1cm (3/8")

FRONT FACING

LINE KEY:

Neck Front:

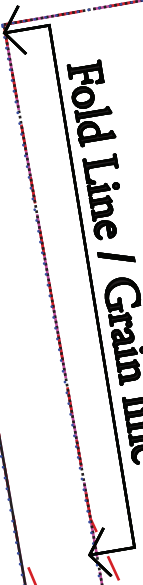
Front:

Standard Square Front:

Deep Square Front:

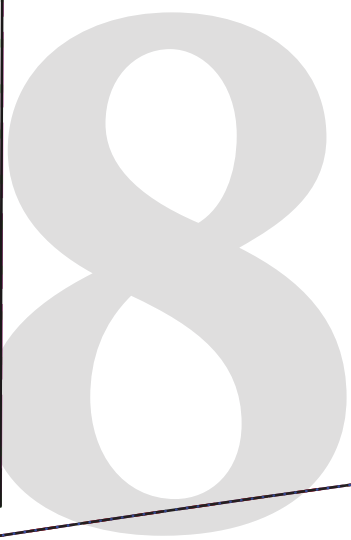
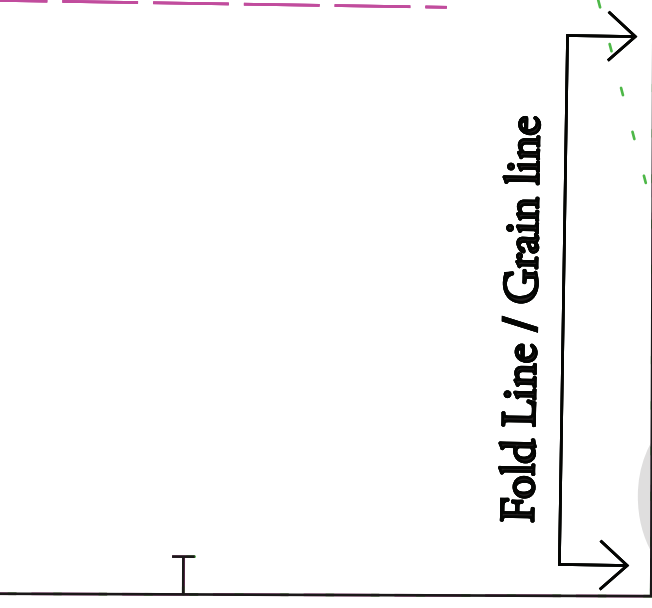
Details:
Cut x1 Pair (x2 pieces in total)
Seam Allowance included:
1cm (3/8")

Fold Line / Grain line



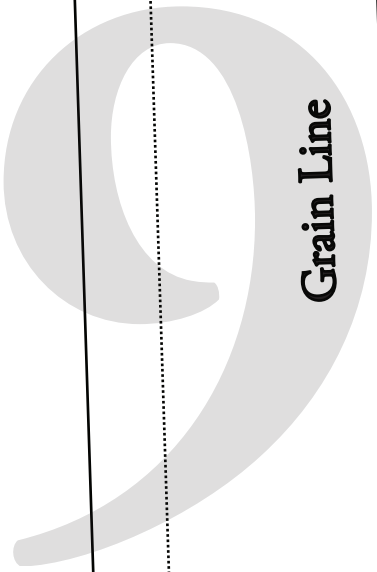
Front:

Standard Square Front:



D
C
S

ROSS
SIZE
FR
NECK
Boat
V F
Star
De

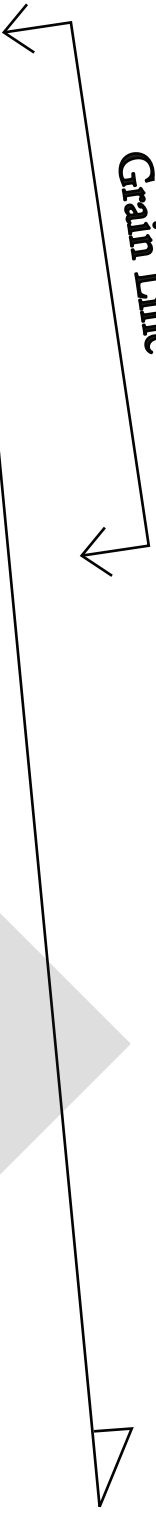


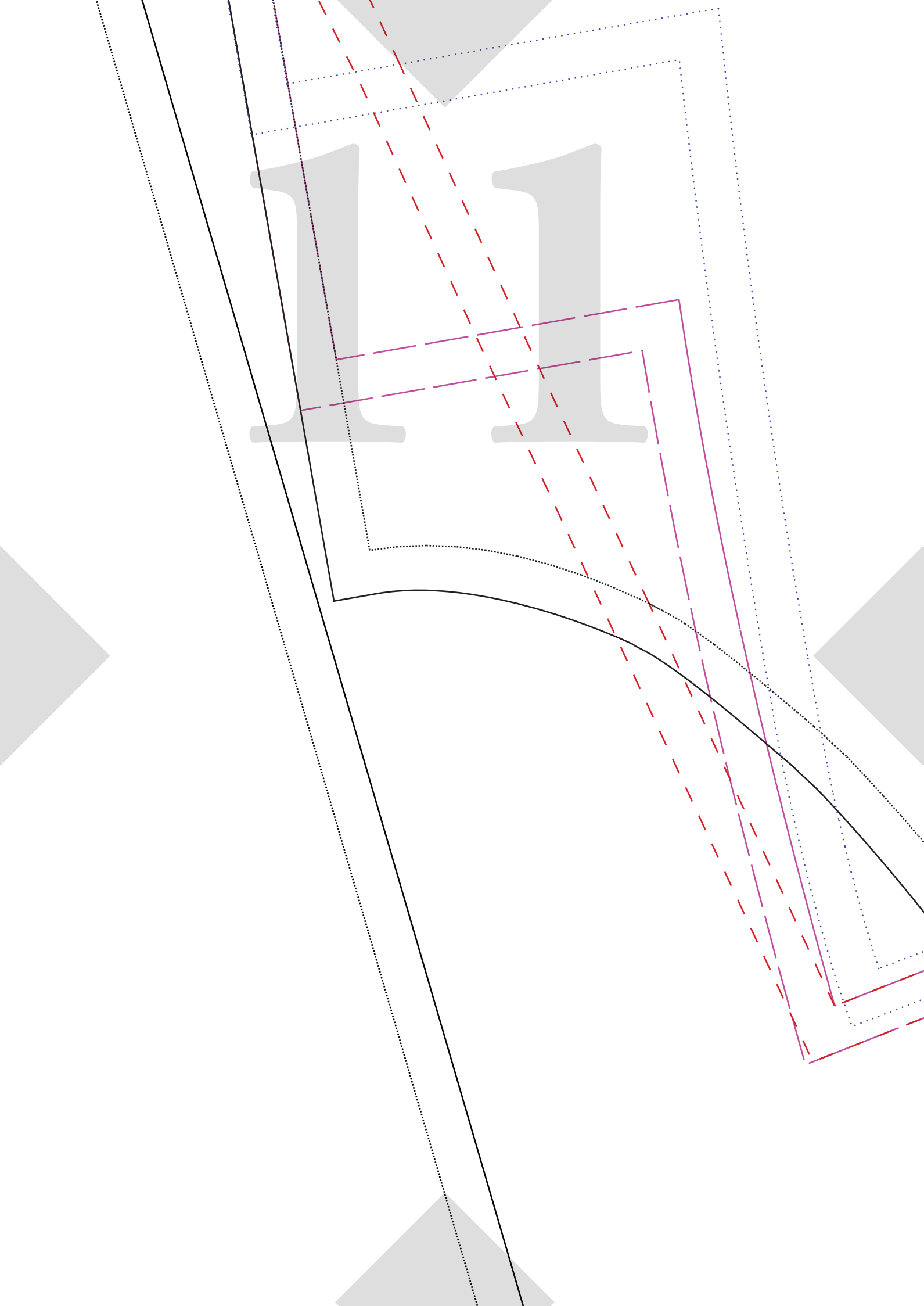
Grain Line



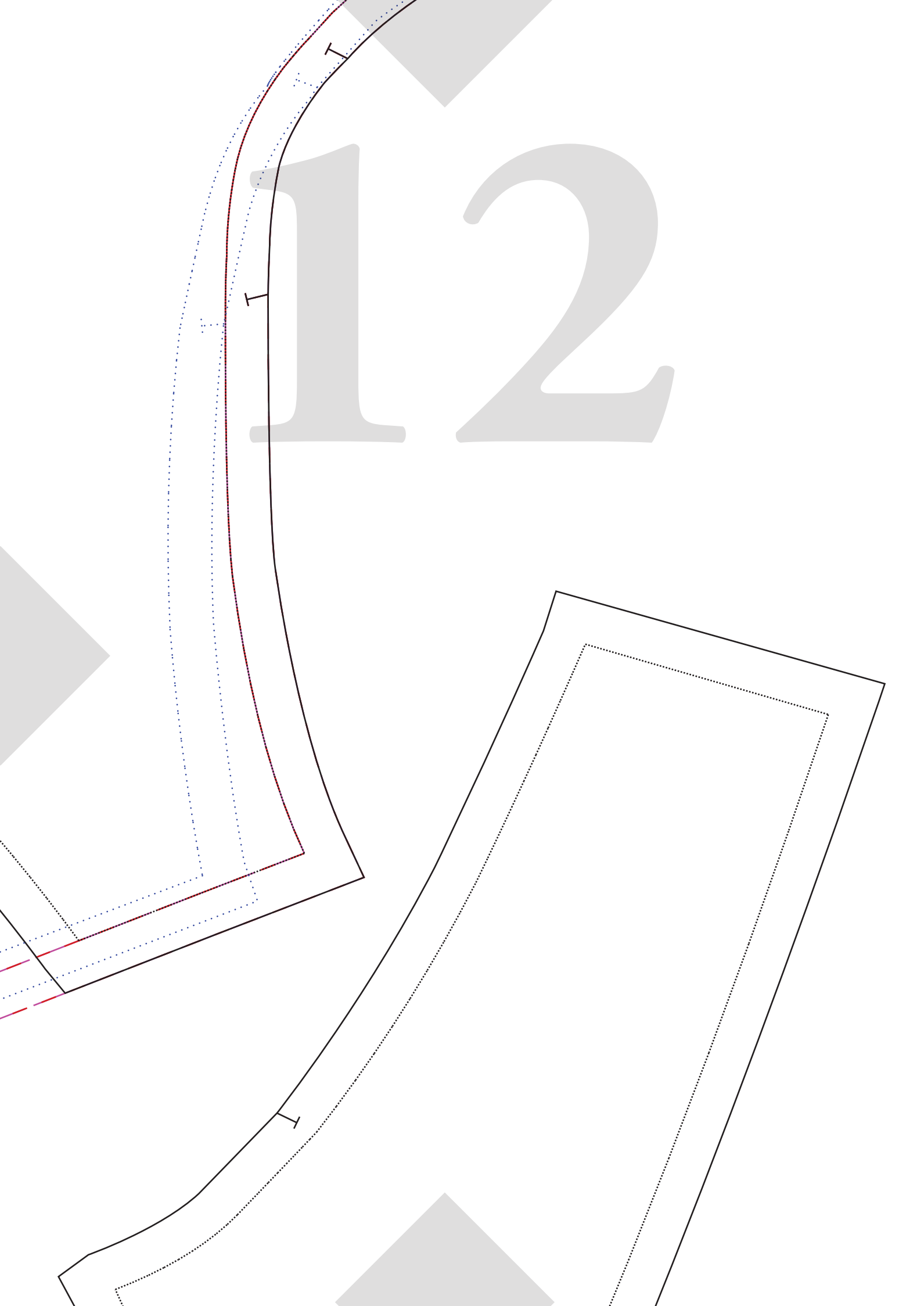
10

Grain Line





12





13

For Height 150 - 160cm

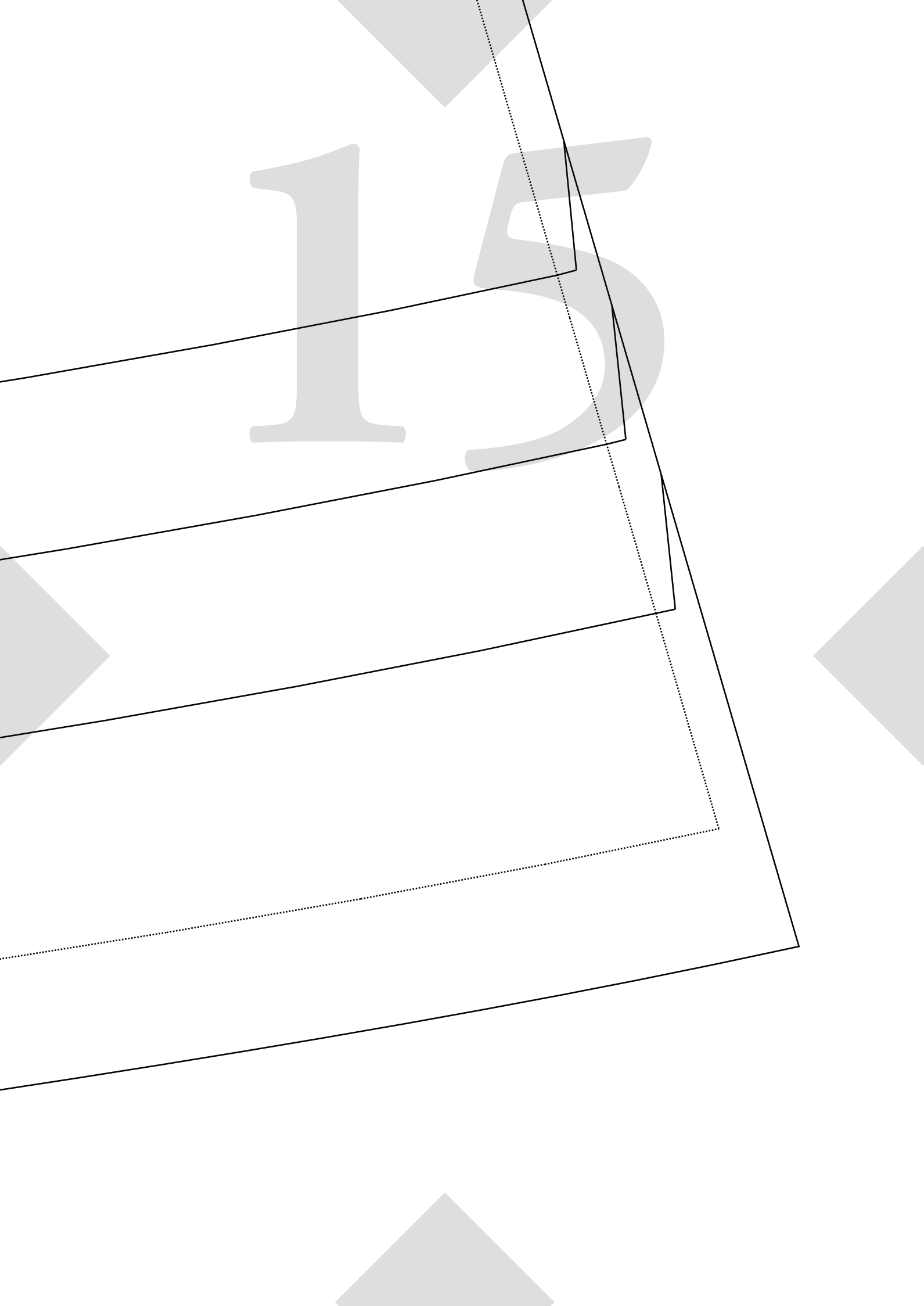
For Height 161 - 170cm

For Height 171cm+

For Height 171cm+ (Extra Long)

Hi from Deep Square neck
Shoulder tie! Pinch and create
a snip to then cut me out.
Leaving a hole shaped me so
that the side front can stay
intact, and you can use me
too if needed.

15



ROSSI & FREDY

SIZE 30

**CENTRE
FRONT MAIN #2**

Deep Square Neckline

Details:

Connect Pattern Piece to
CFront #1 at notches below.

Once connected:
Refer to CENTRE FRONT #1
for cutting instructions
Seam Allowance included:
1cm (3/8")

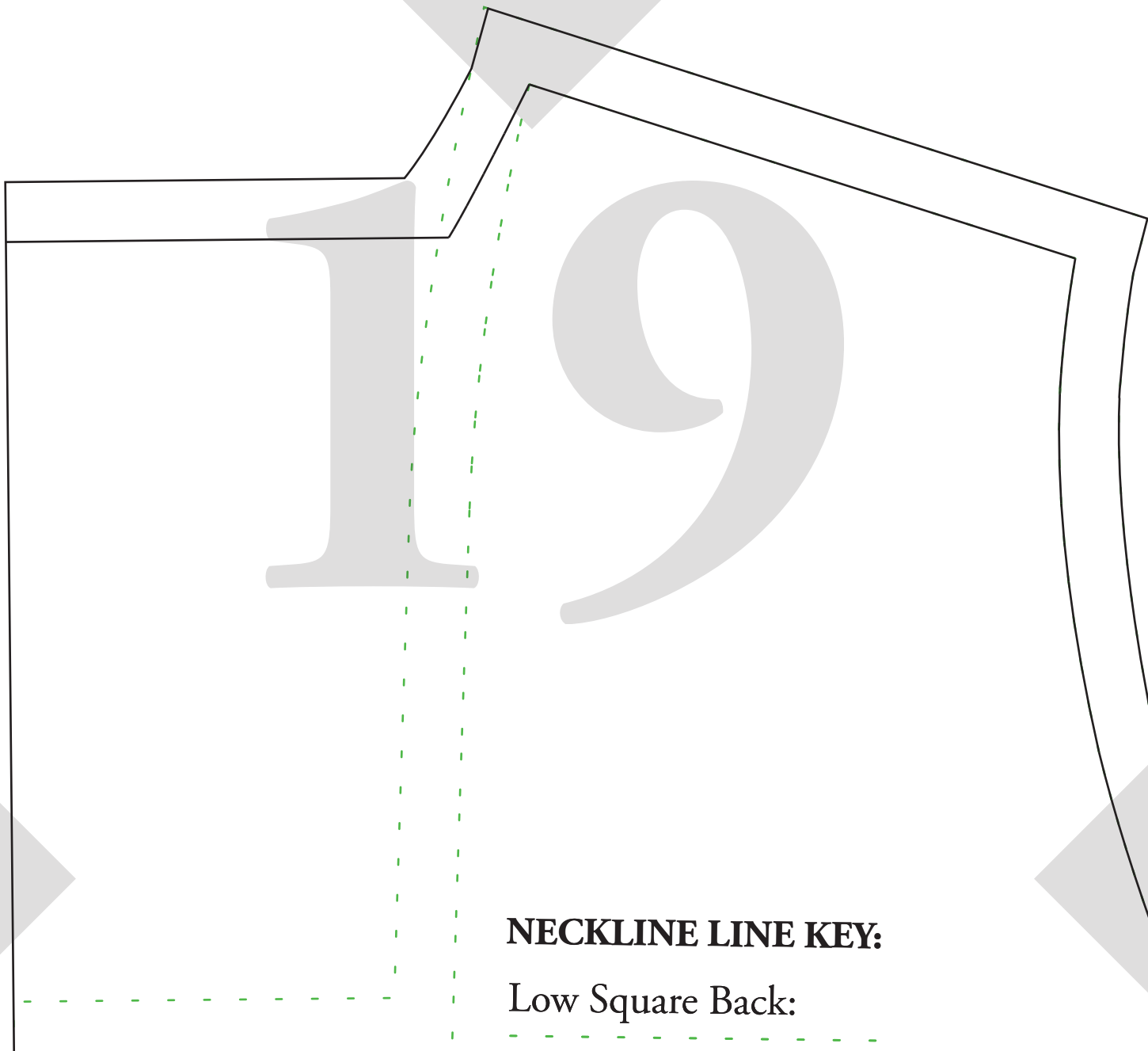
Fold Line / Grain line

17

ROSSI & FREDY

18





NECKLINE LINE KEY:

Low Square Back:

High Square Back:

ROSSI & FREDY

SIZE 30

**CENTRE
BACK MAIN #2**

To Match:

**Standard Square +
V Neck Front**

←
Fo

Details

T

ROSSI & FREDY

SIZE 30

CENTRE BACK MAIN #2

Low Square back

To Match:

Deep Square Front

Details:

Connect Pattern Piece to

CBack #1 at notches below.

Once connected:

Refer to CENTRE BACK #1

for cutting instructions

Seam Allowance included:

1cm (3/8")

Fold Line / Grain line

TO MATCH DEEP SQUARE BACK BACK BODICE OPTION

SIZE 30

CENTRE FRONT MAIN #1

Details:

**Connect Pattern Piece to CF #2
at notches at top of pattern piece**

Once connected:

Cut x1 on FOLD

Seam Allowance included: 1cm (3/8")

← **Optional Leg
Split notch**

ROSSI & FREDY

SIZE 30

**CENTRE BACK
MAIN #1**

Details:

Connect Pattern Piece to CB #2
at notches at top of pattern piece

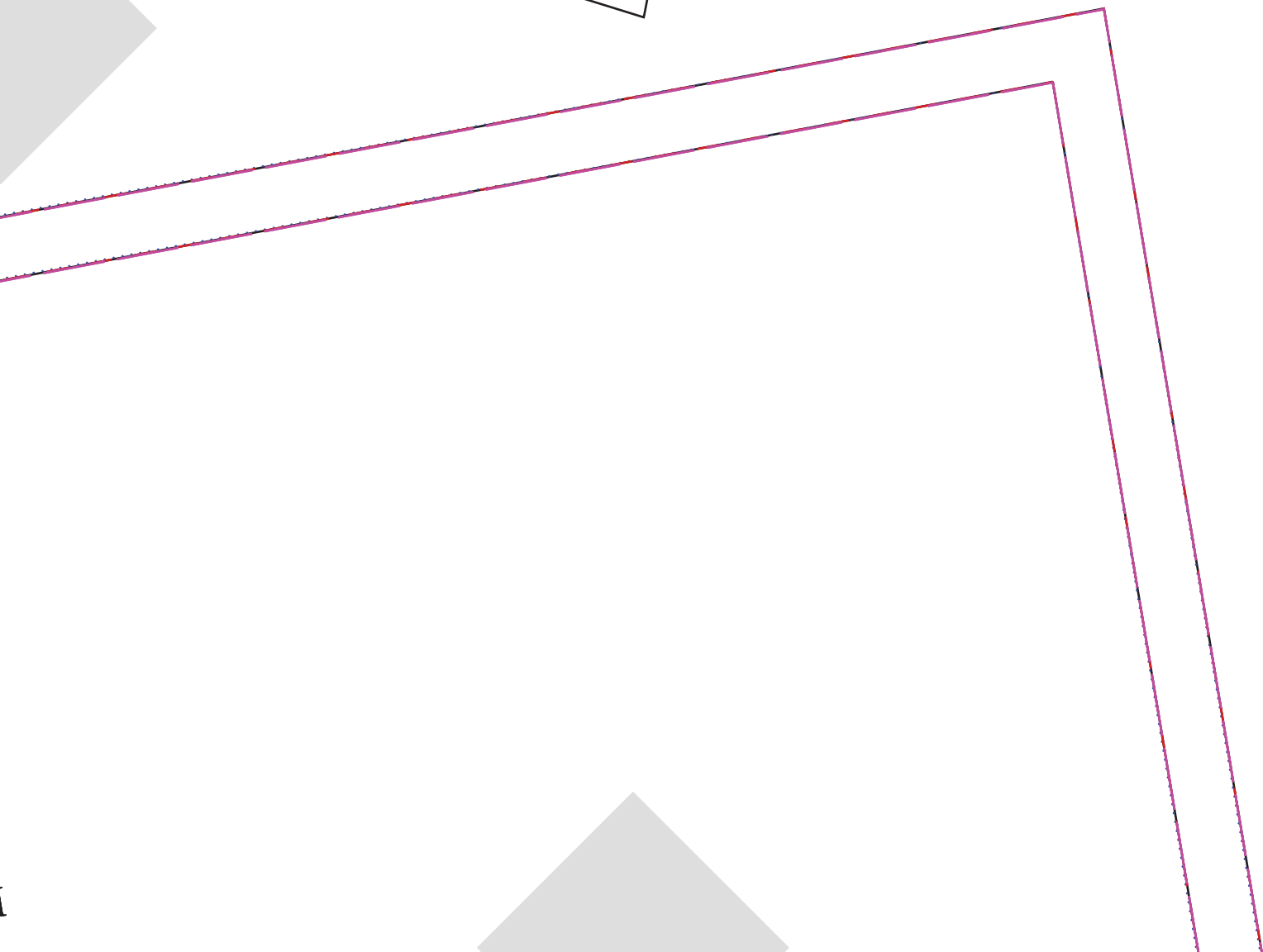
Once connected:

Cut x1 on FOLD

Seam Allowance included: 1cm (3/8")



24

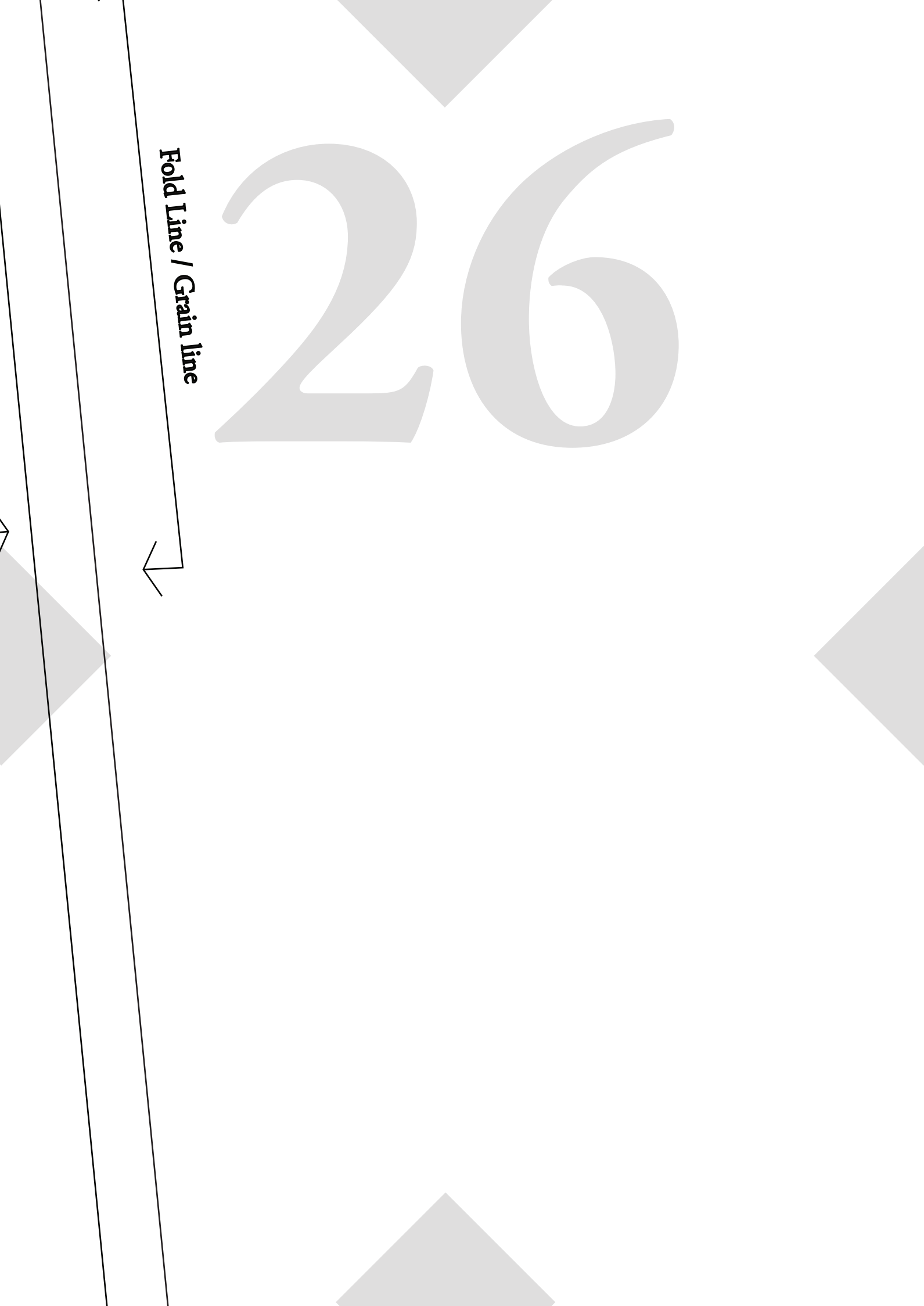


25

Fold Line / Grain line

26

Fold Line / Grain line



NECKLINE LINE KEY:

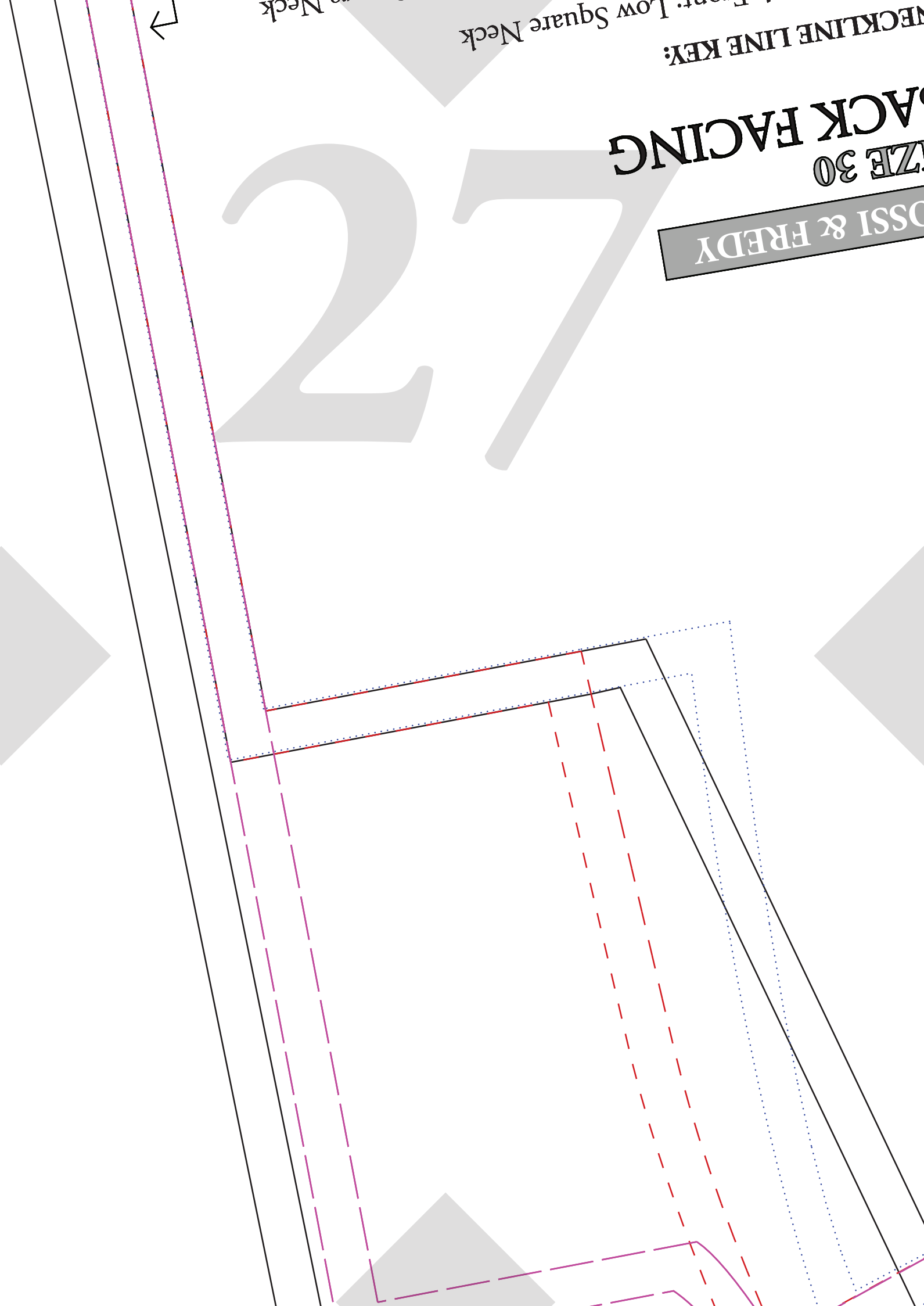
Front: Low Square Neck

Back Neck

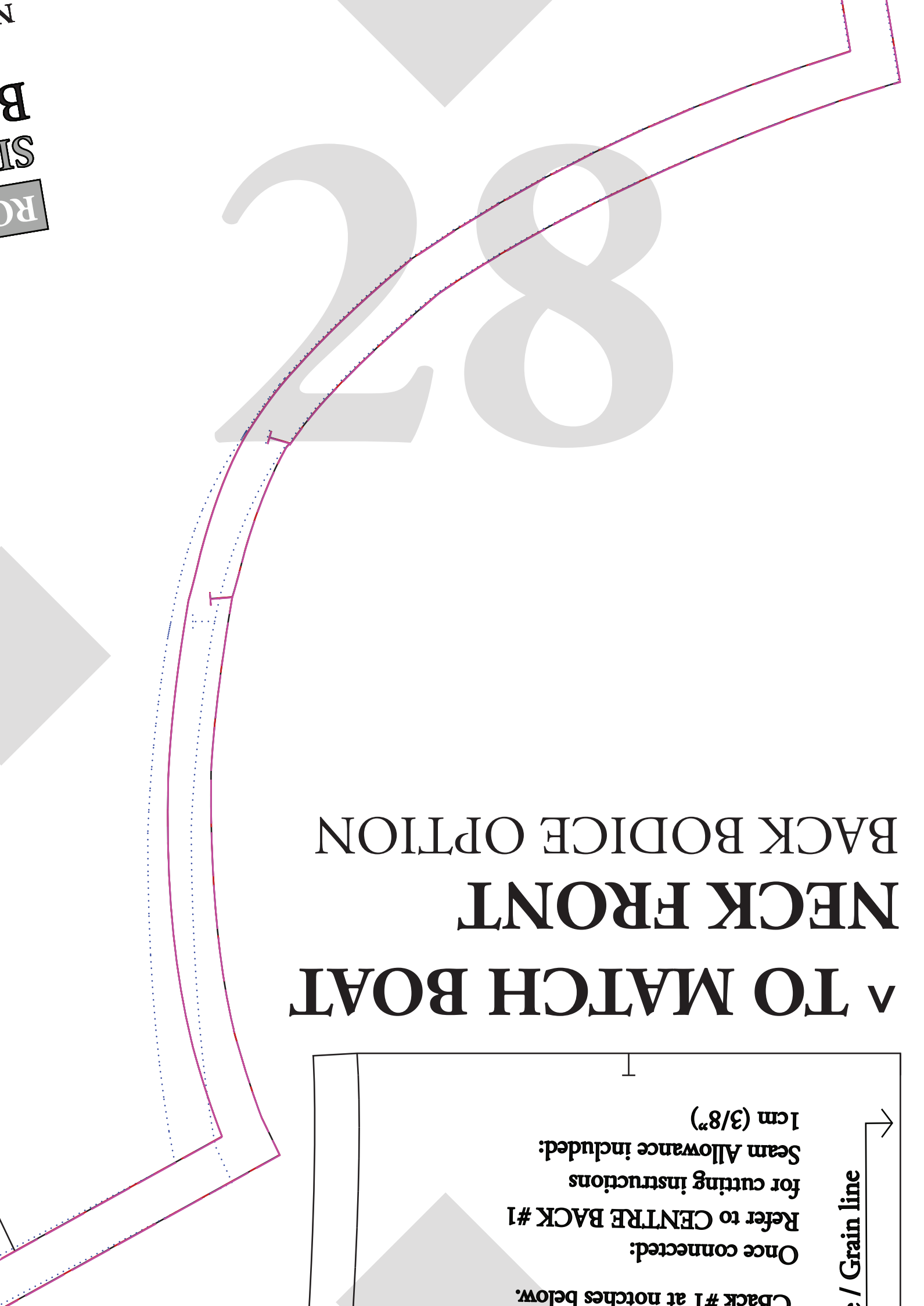
BACK FACING
SIZE 30

ROSSI & FREDY

27



^ TO MATCH BOAT NECK FRONT BACK BODICE OPTION

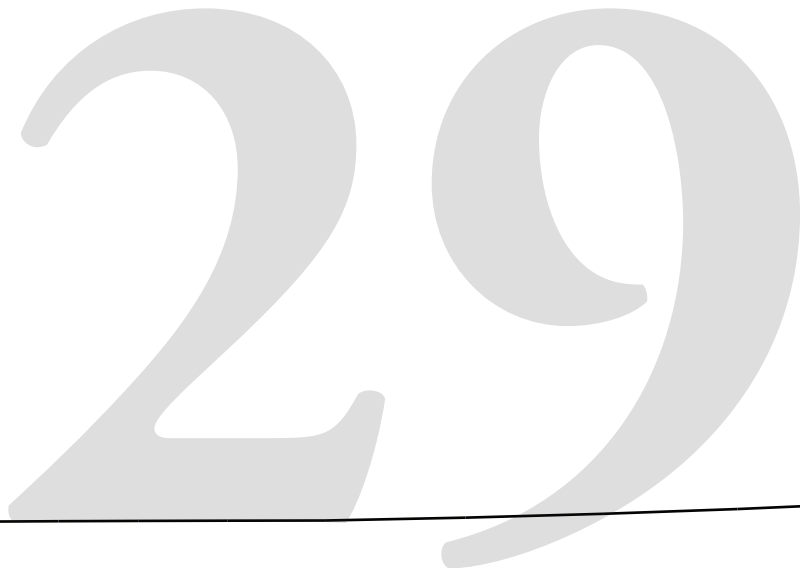


Once connected:
Refer to CENTRE BACK #1
for cutting instructions
Seam Allowance included:
1cm (3/8")

Grain line

Back #1 at notches below.

RC
SI
B



29

For Height 150

For Height 160

For Height 170

For Height 171cm

30

0 - 160cm

For Height 150 - 160cm

61 - 170cm

For Height 161 - 170cm

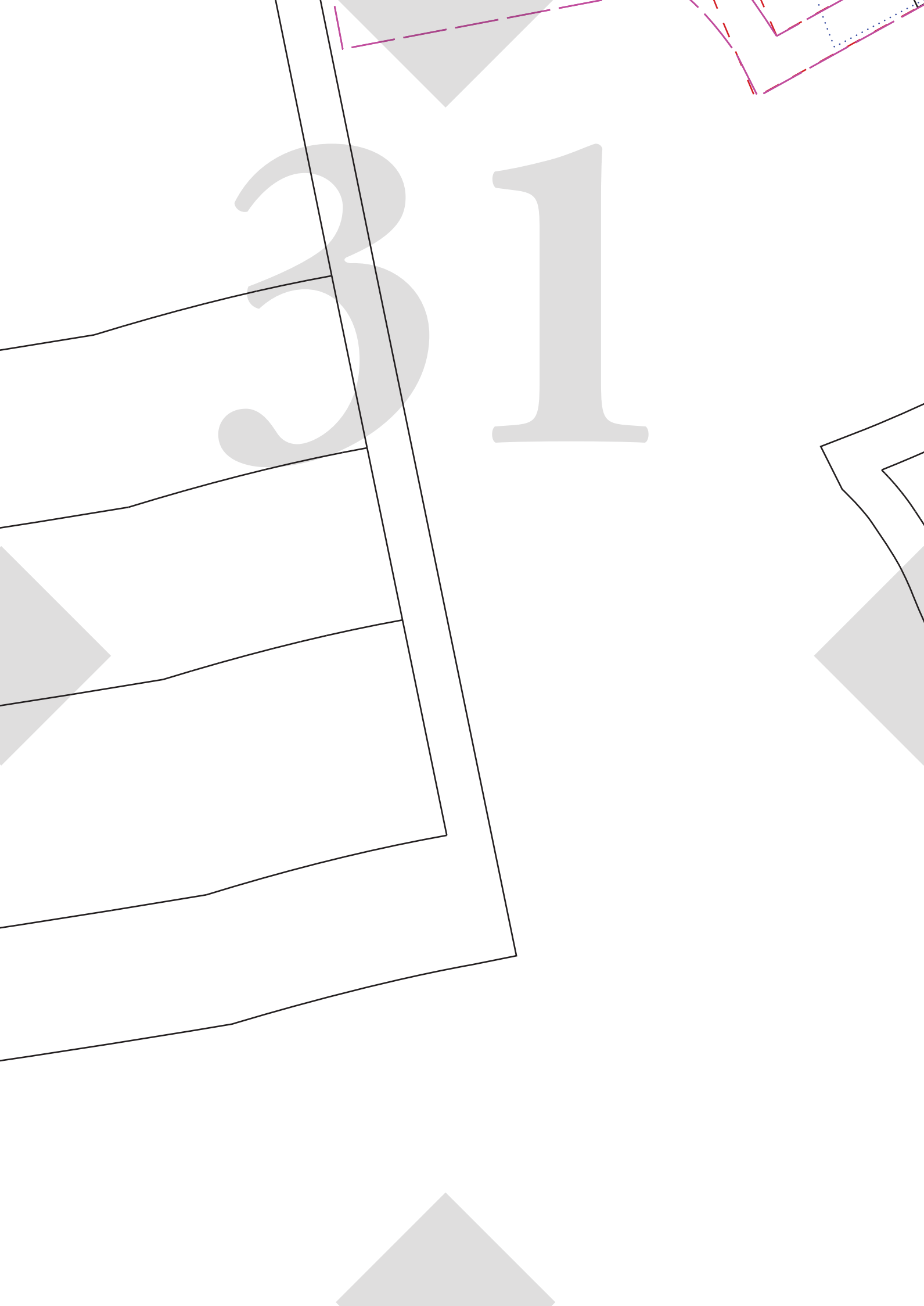
ght 171cm +

For Height 171cm +

m + (Extra Long)

For Height 171cm + (Extra Long)

31



Fold Line

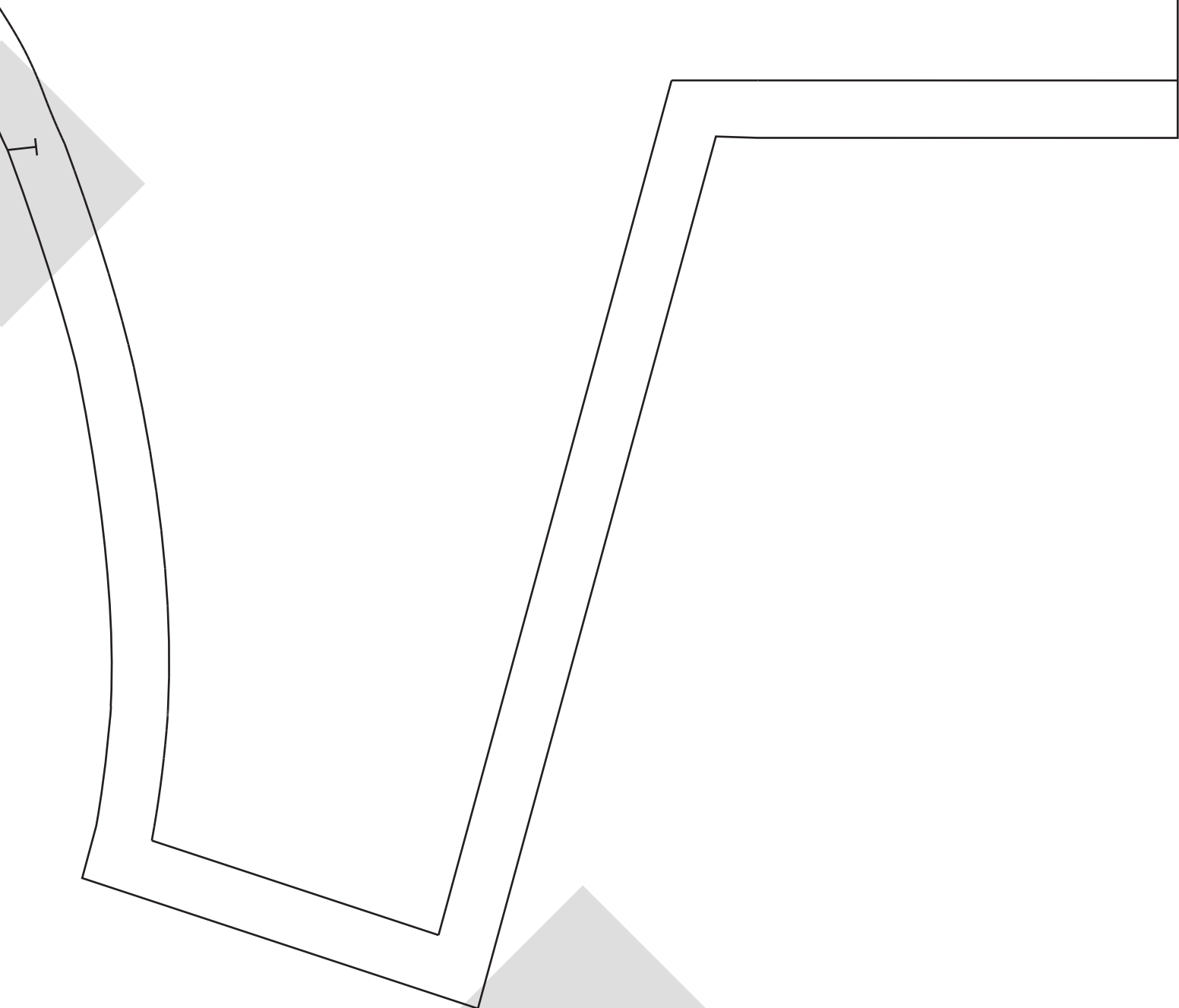
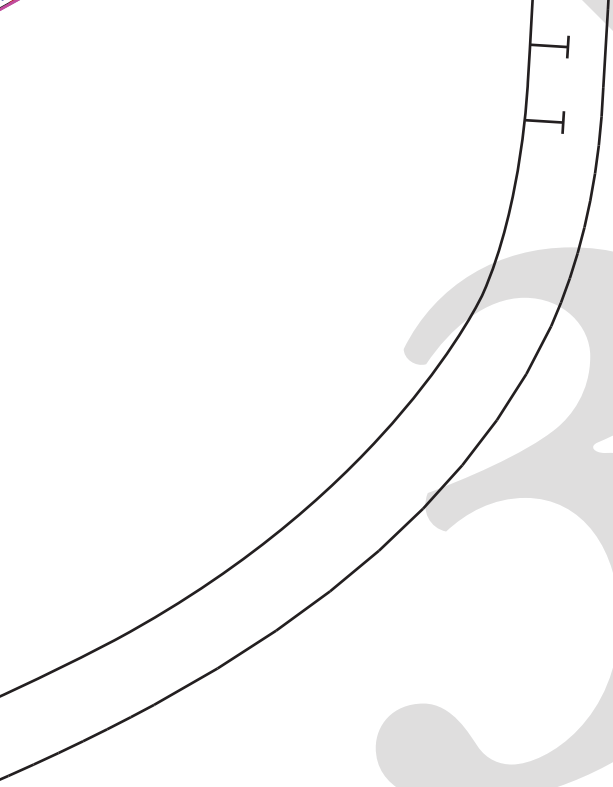


Details:
Connect Pattern Piece to
Chest #1

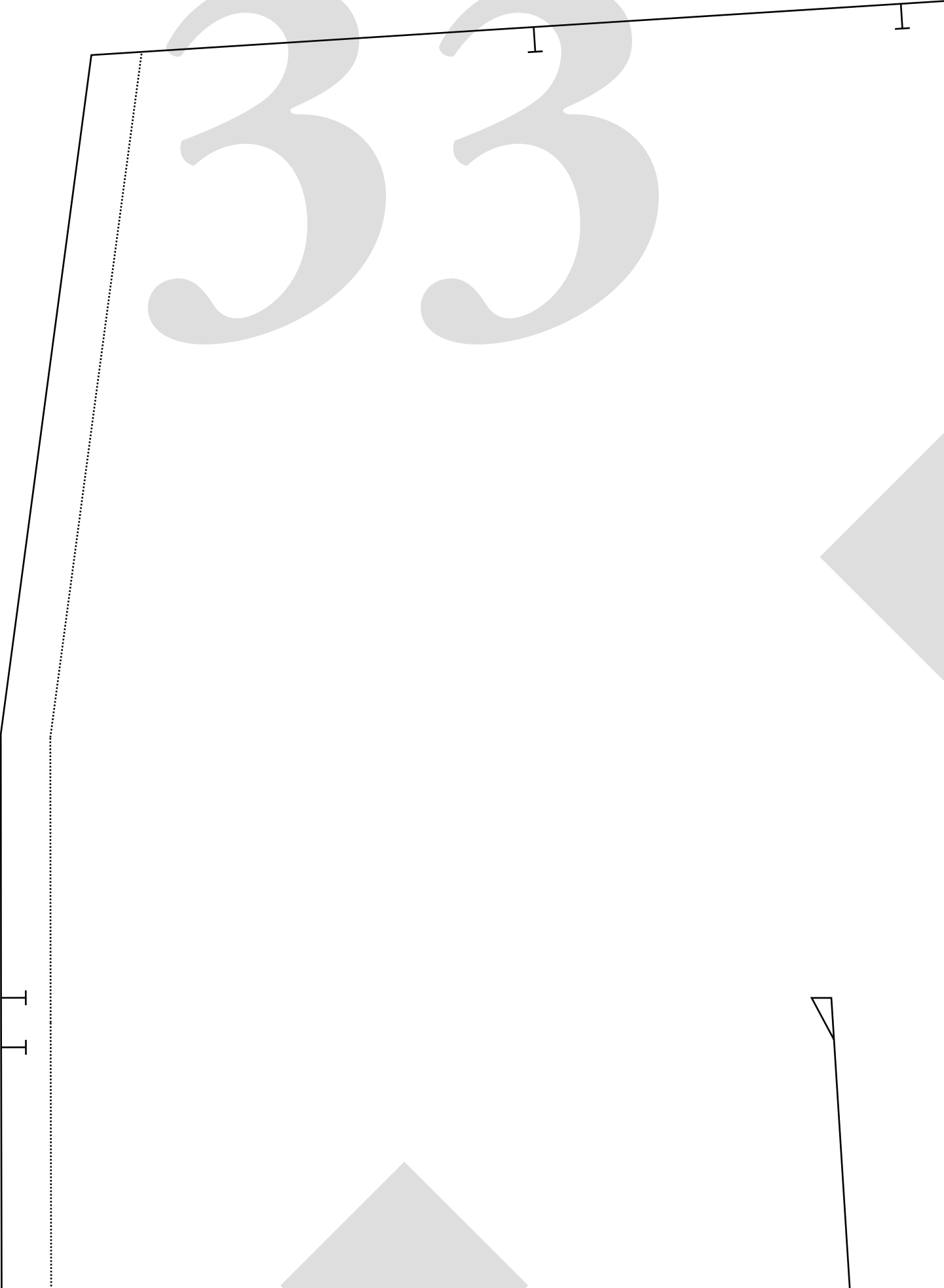
Boat Neck Front
To Match:
Low Square back

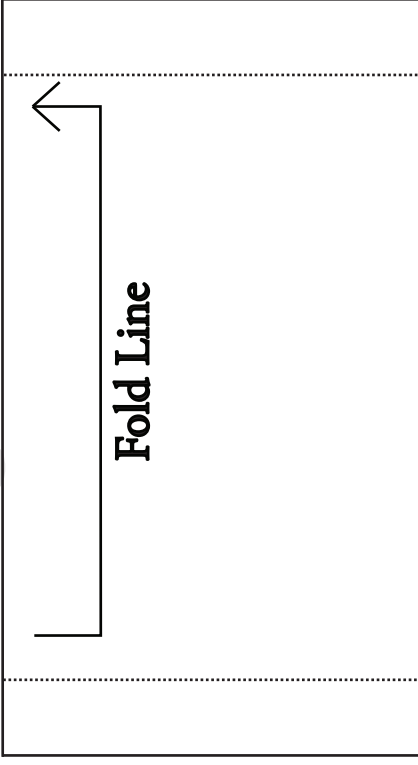
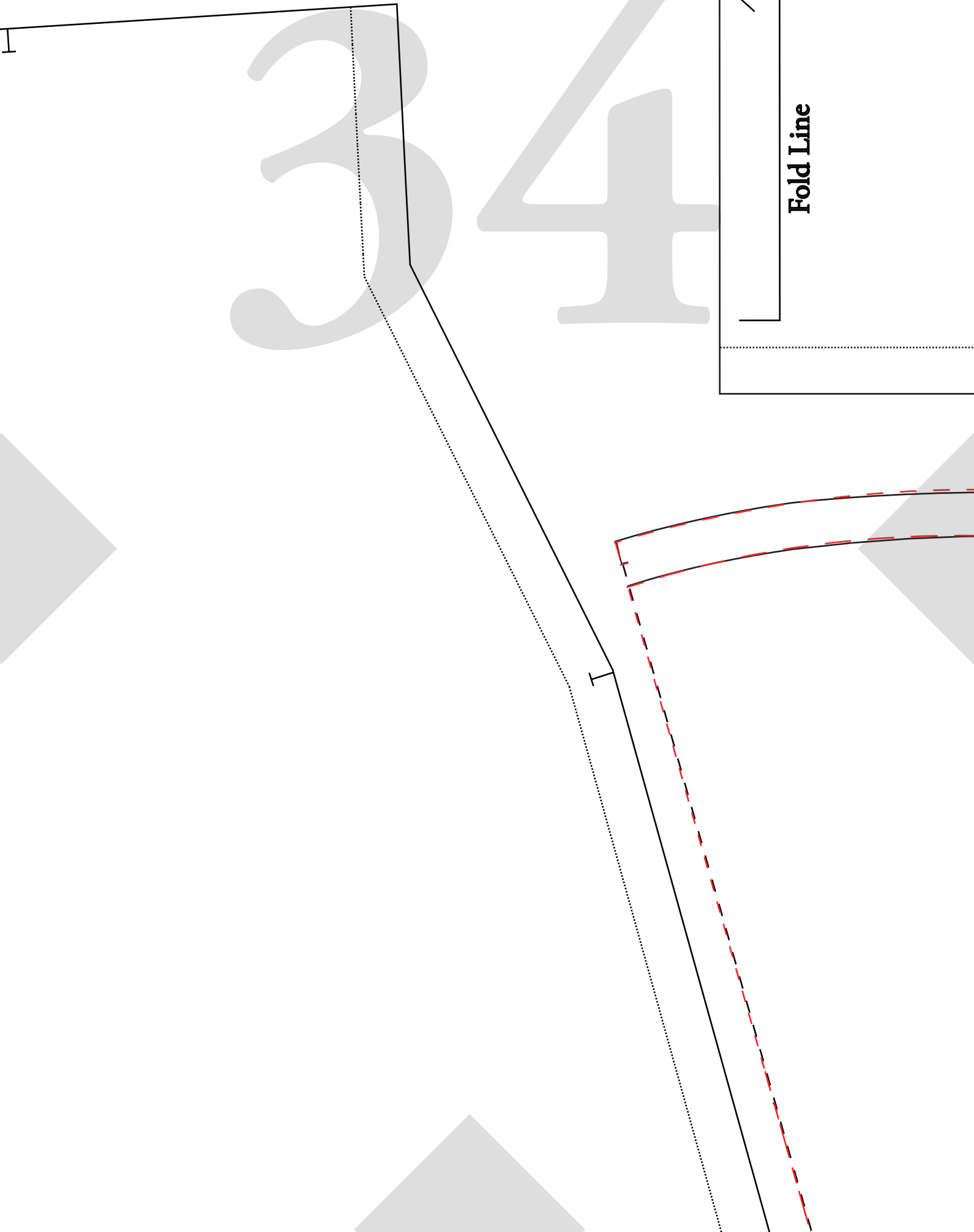
SIZE 30 CENTRE BACK MAIN #2

ROSSI & FREDY



33





334

ROSSI & FREDY

SIZE 30

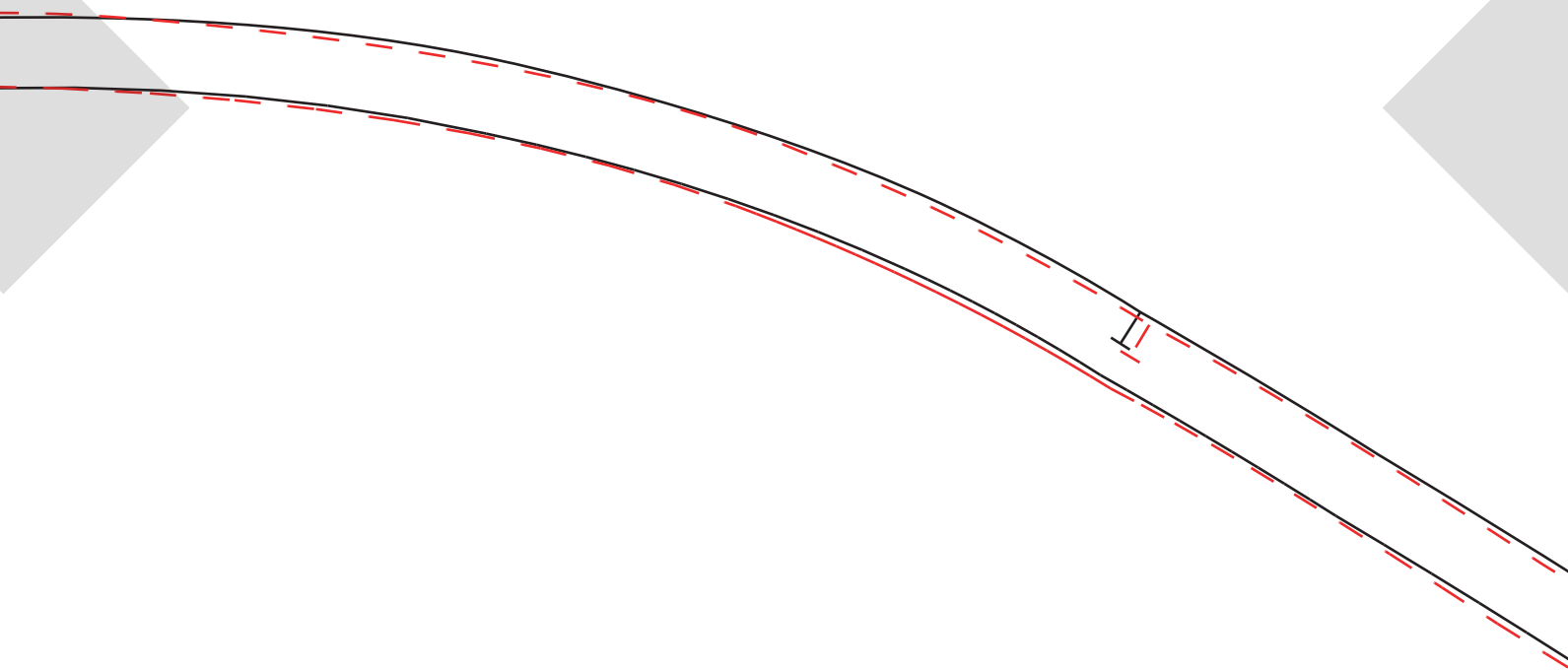
SHORT PUFF SLEEVE CUFF

Details:

Cut x2 on Fold

(Measure upper arm to compare)

Seam Allowance included: 1cm (3/8")



ROSSI & FREDY

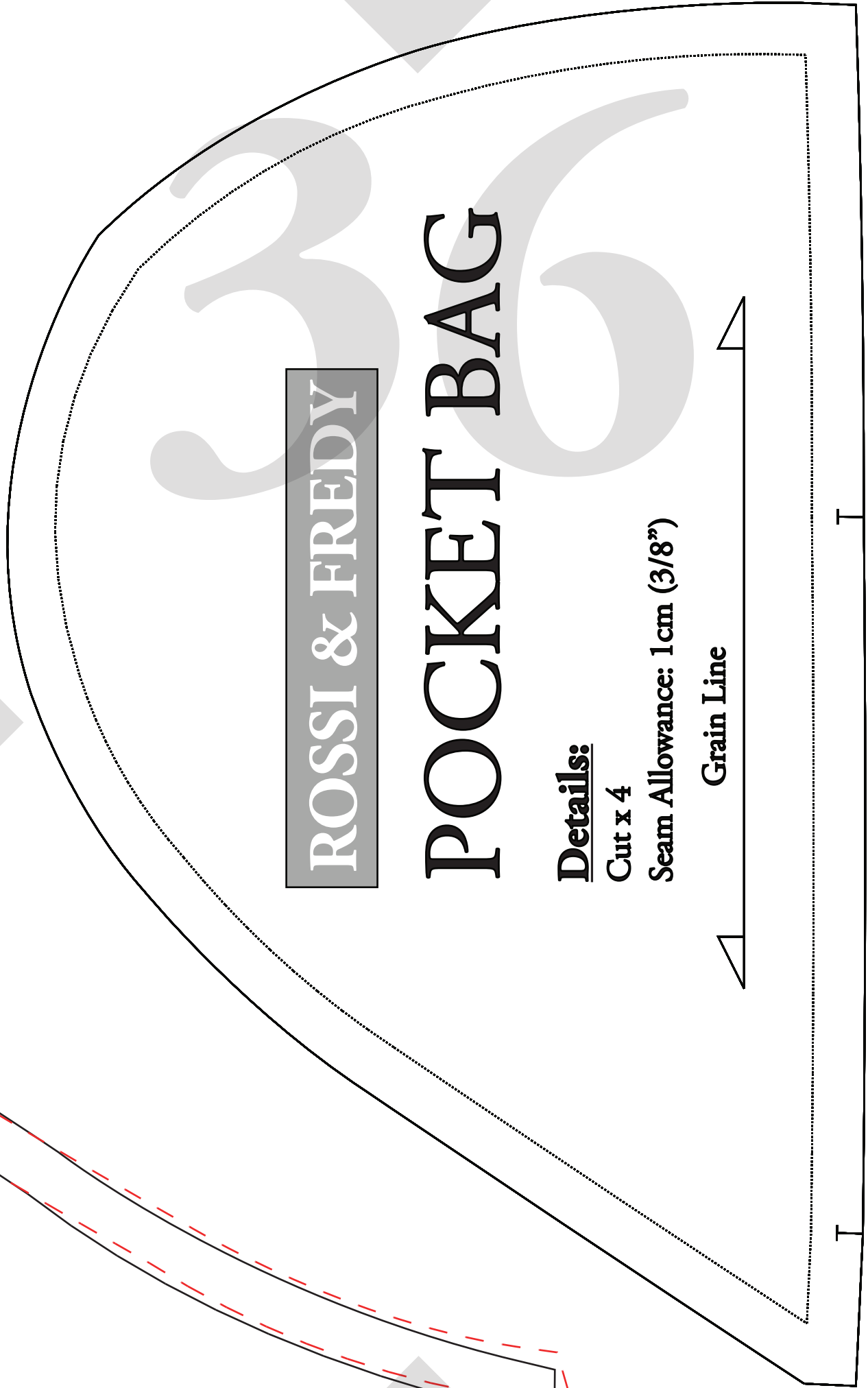
POCKET BAG

Details:

Cut x 4

Seam Allowance: 1cm (3/8")

Grain Line



ROSSI & FREDY

SIZE 30

SIDE BACK #1

Details:

Connect Pattern Piece to #2
at notches at top of pattern piece

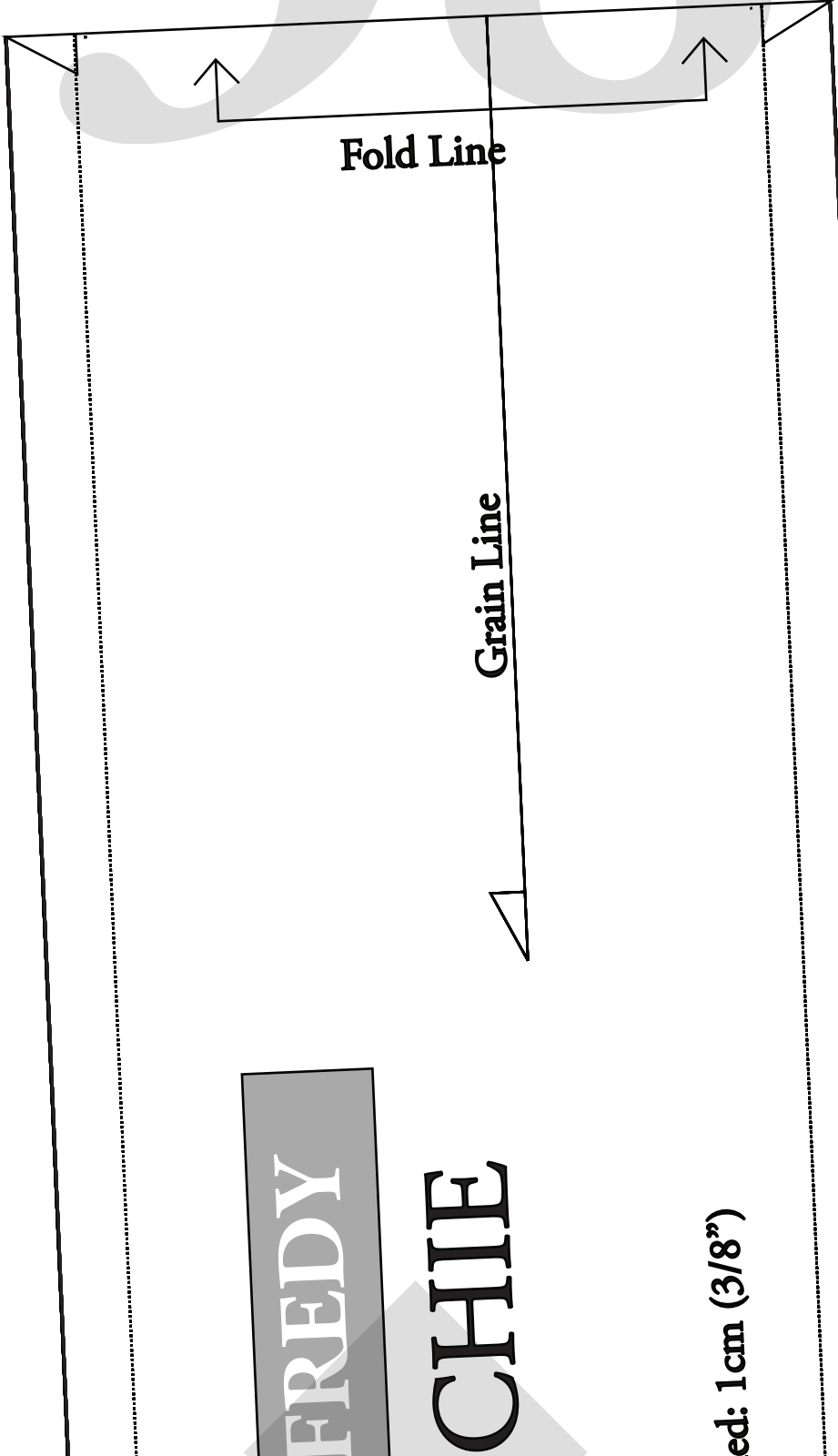
Once connected:

Cut x 1 Pair (2 pieces all up)

Seam Allowance included: 1cm (3/8")



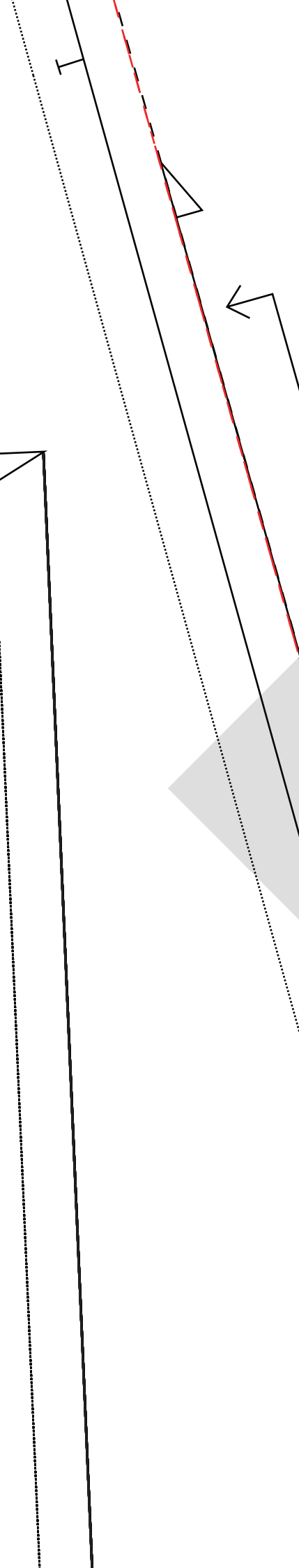
38



FREDDY

CHIE

ed: 1cm (3/8")



Grain Line / Fold Line

FREDDY WRAP

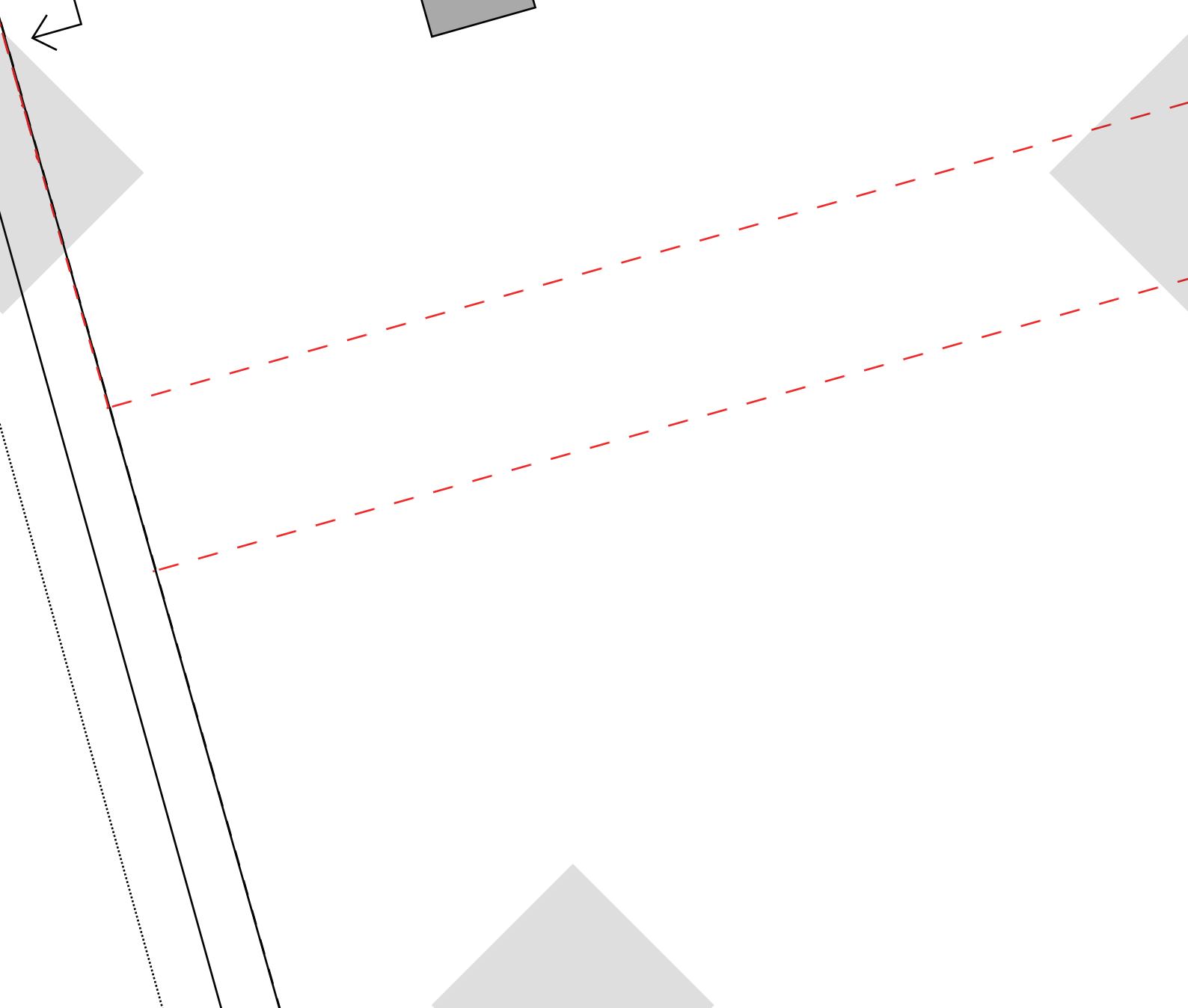
SIZE 30

SHORT PUFF SLEEVE

Details:
Cut x 2 on fold
Seam Allowance included: 1 cm (3/8")

LINE KEY

... SLEEVE:



SHORT PUFF S-

40

Details:

Cut x 2

Seam Allowance: 1 cm (3/8")



41

Grain Li



ROSSI &

SCRUN

Details:

Cut x 1 on fold

Seam Allowance includ

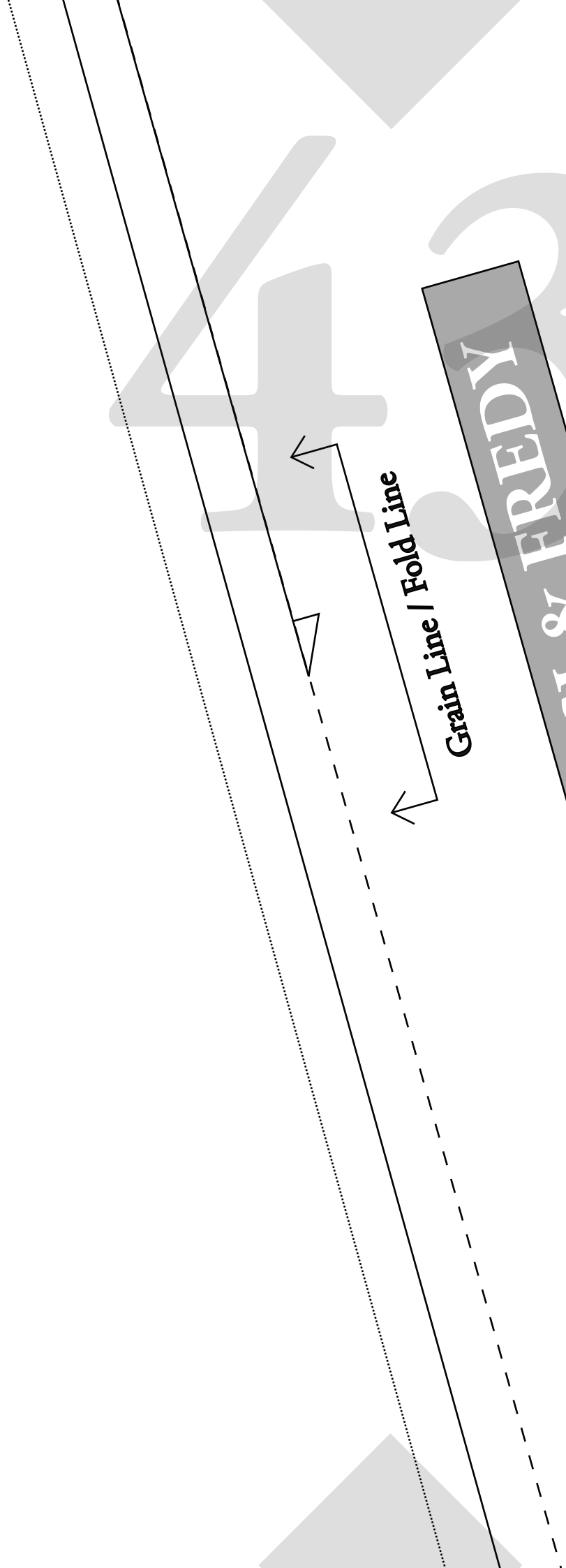
ROSSI & FREDY

HEAD SCARF

Details:

Cut x 1 on fold. Include scrunchie section

Seam Allowance included: 1cm (3/8")



ROSSI & FREDY

SIZE 30

**LONG SHIRRED
SLEEVE**

Details:
Cut x 2 on fold
Seam Allowance included: 1cm (3/8")

LINE KEY

LONG SHIRRED:

ROSSI & FREDY

BACK NECK TIE



45

For Height 150 - 160cm

For Height 161 - 170cm

For Height 171cm+

For Height 171cm+ (Extra Long)

Hi from Scrunchie & Head scarf! Pinch and create a snip to then cut me out. Leaving a hole shaped me so that the side front can stay intact, and you can use me too if needed.

47

SU

Seam Allowance included: 1cm (3/8")
Refer to SIDE BACK #1 for cutting instructions
Once connected:
Connect Pattern Piece to Back #1
at notches below.

SIDE BACK #2
SIZE 30

Grain Line

ROSSI & FREDY

**Thin / Standard Waist
Wrap Add on**

SIZE 16 - 30

Grain Line

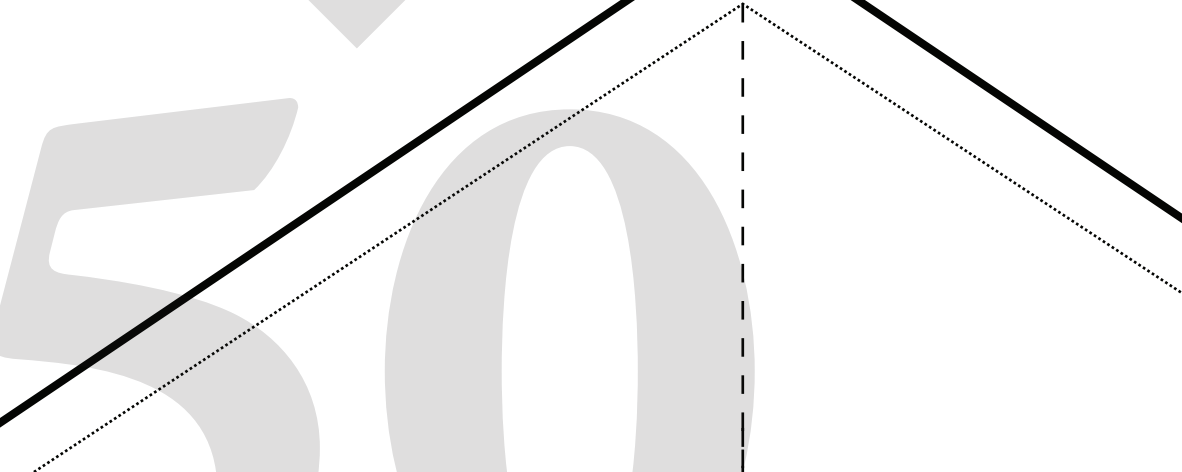
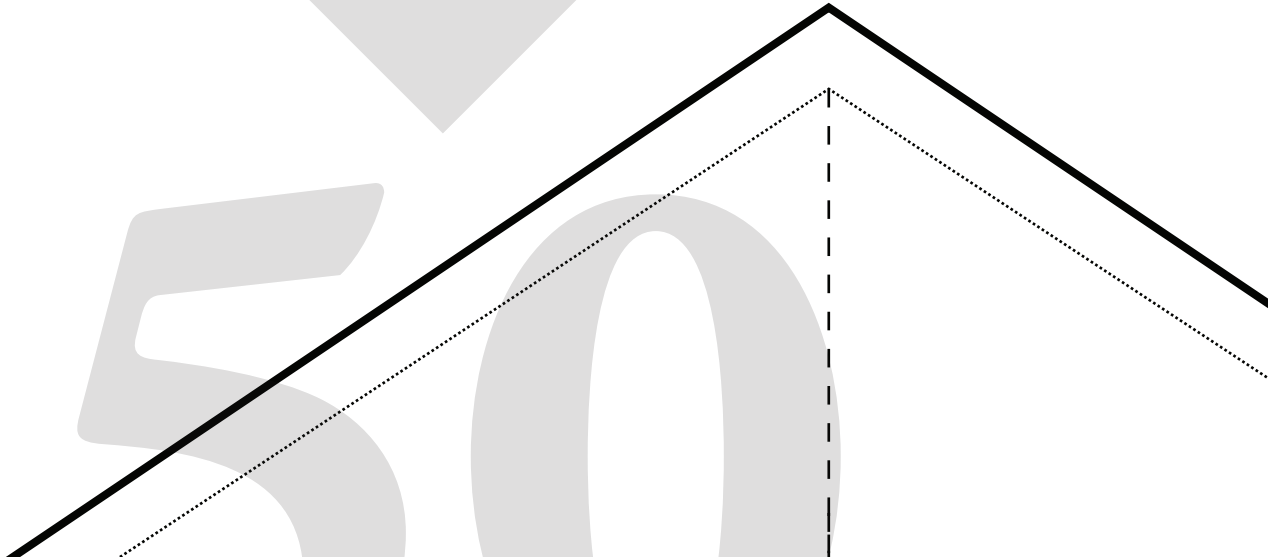
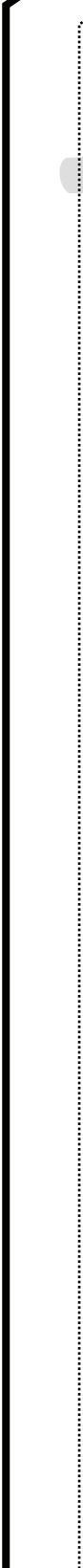
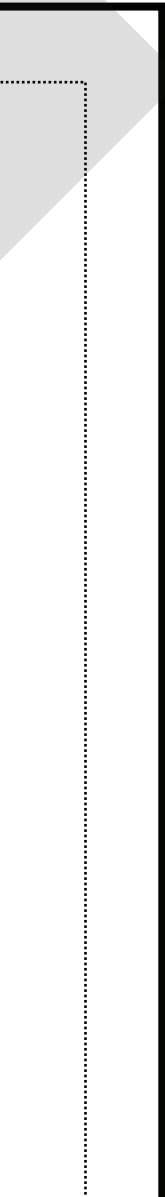
Details:

Cut x 2 Pairs (all up x4 pieces)
Seam Allowance Included: 1cm (3/8")

49

A large rectangular frame designed for handwriting practice. It features a solid black outer border, a dotted inner border, and a vertical dashed line on the right side. The frame is positioned in the lower half of the page. There are also three gray triangular shapes: one at the top center, one at the bottom center, and one on the right edge.

550



51

ROSSI & FREDY

SIZE 22-30

TWO TONE WAIST WRAP #1

Details:

Connect Pattern Piece to #2

Once Connected :

Cut x 2 in Primary Colour (one pair)

Cut x 2 in Secondary Colour (one pair)

Seam Allowance included: 1cm (3/8")



Grain Line / Fold Line



53



Grain Line / Fold Line



54



55

Grain Line



56

ROSSI & FREDY

SIZE 16 – 30

THIN WAIST WRAP #1

Details:

Connect Pattern Piece to #2

Once connected:

Cut x 2

Seam Allowance included: 1cm (3/8")

Join Connecting Piece Here



ROSSI & FREDY

SIZE 16 – 30

THIN WAIST WRAP #2

Details:

Connect Pattern Piece to #1

See Wrap #1 once connected for cutting instructions

Seam Allowance included: 1cm (3/8")

Join Connecting Piece Here



ROSSI & FREDY

SIZE 22 - 30

**TWO TONE
WAIST WRAP
#2**

Details:

Connect Pattern Piece to #1
See Wrap #1 once connected
for cutting instructions
Seam Allowance included: 1cm (3/8")

Join Connecting Piece Here

60

