

A4 PRINTING INSTRUCTIONS

Before you get started on creating your Rossi of Fredy Wrap, make sure to read the below notes so that you can make sure your printer is calibrated and prints the patterns to the correct size.

Before you begin, please make sure you are printing on A4 paper with an A4 printer, not letter paper as the small difference in the paper size can mean your patterns don't print correct. A4 measures 210 x 297mm

1. Select Layers / styles:

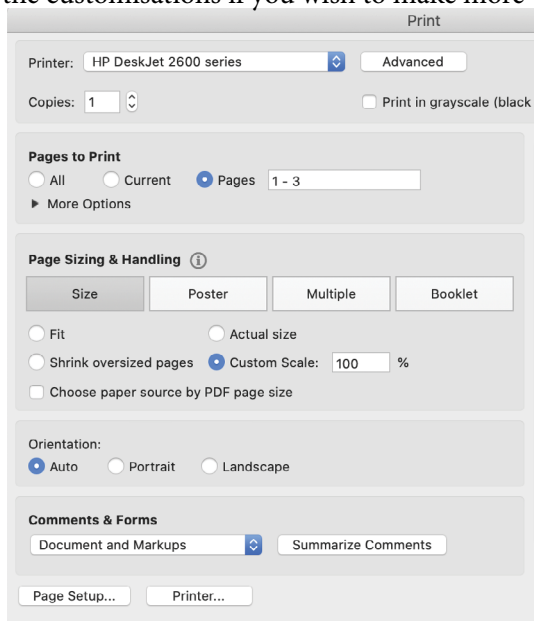
Make sure you have gone through the PDF and selected all necessary layers + Customisations that you need for your Rossi / Fredy Wrap in instructions. You can print out all the customisations if you wish to make more variations in future.

2. Print the first three pages as a test print:

We strongly suggest printing the first three pages as a test to make sure everything is set up correctly, to save time, paper and the environment.

When printing in Adobe Acrobat, do as follows:

- File > Print
- Select your printer
- Click 'Pages' and then type '1 - 3' (for test print)
- Click 'Custom Scale' and type '100%'
- Click 'PRINT'

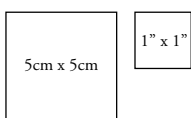


3. Calibrate and measure

When printing, although you would've selected '100%', most common household printers will print with a white border. Don't worry, this won't affect measurements and you **SHOULD NOT** trim the borders. However, to check this is correct for your printer – we have provided two tests of calibration squares.

3a: Single Square Calibration

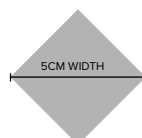
On the first pattern page, you will see a 5x5cm square and a 1"x1" square. Using your ruler, measure these squares to make sure they (along with your patterns) have printed to the correct scale.



Note: These calibration squares are an example only and are not printed to scale.

3b: Across-Page Diamond Calibration

You will then see a grey diamond split across the first two pattern pages (similar to the below example). Simply measure from one corner of the diamond to the other corner. This should measure 5cm from left point to right point.



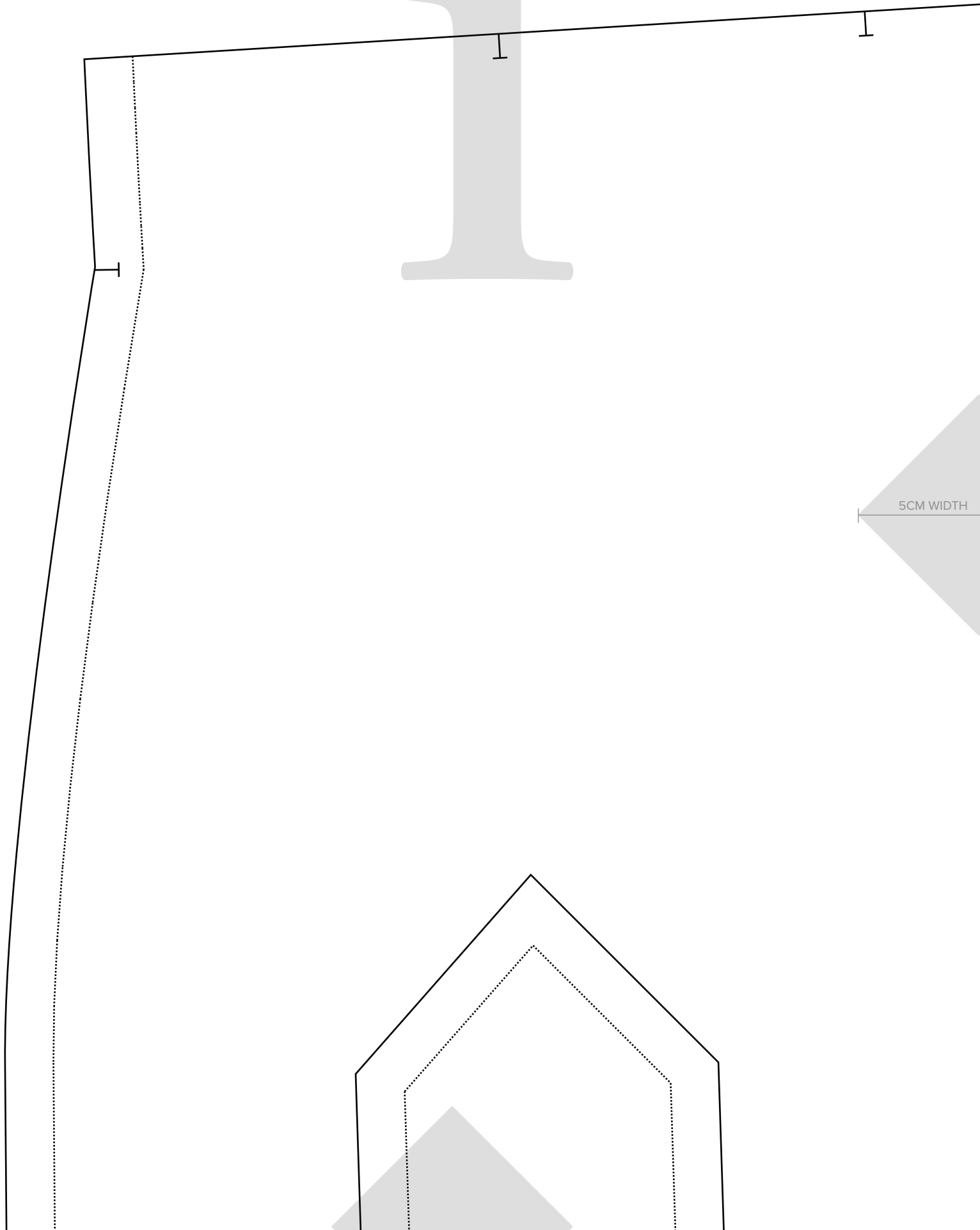
Note: This diamond is an example only and is not printed to scale.

4. You're all set and ready to go!

Once you have successfully tested and printed the first couple of pages, and double-checked the calibration as per steps 3a and 3b, you're all set to go!

1

5CM WIDTH



ROSSI & FREDY

SIZE 28

SIDE FRONT #2

Details:

Connect Pattern Piece to front #1
at notches below.

Grain Line



Once connected:

Refer to SIDE FRONT #1 for cutting instructions

Seam Allowance included: 1cm (3/8")



A technical drawing of a pattern piece for a garment's center front. The piece is irregularly shaped with a curved neckline and a curved hemline. It features a solid outer line, a dashed inner line, and a dotted line representing a seam allowance. A large, faint number '3' is visible in the background. A small notch is marked on the left side of the piece. The text 'ROSSI & FREDY' is enclosed in a grey box, and 'SIZE 28' is written below it. The main title 'CENTRE FRONT MAIN #2' is in a large, bold font. Below the title, there are instructions: 'Details: Connect Pattern Piece to CFront #1 at notches below.' and 'Once connected: Refer to CENTRE FRONT #1 for cutting instructions'. The seam allowance is specified as '1cm (3/8")'.

ROSSI & FREDY

SIZE 28

**CENTRE
FRONT MAIN #2**

Details:

**Connect Pattern Piece to
CFront #1 at notches below.**

Once connected:

**Refer to CENTRE FRONT #1
for cutting instructions**

Seam Allowance included: 1cm (3/8")

NECKLINE

Boat Neck

V Front

Fredy Wrap + Rossi Wrap – Size 28

© The Bold One Workshop Patterns.
These patterns are copyrighted by
The Bold One Patterns and may not
be copied, shared, or resold.

Reproducing this pattern to sell items
commercially is prohibited.

Seam allowance = 1cm (3/8")

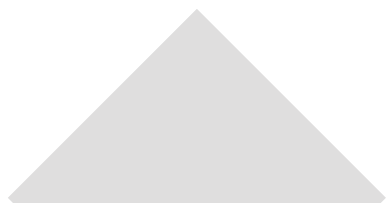
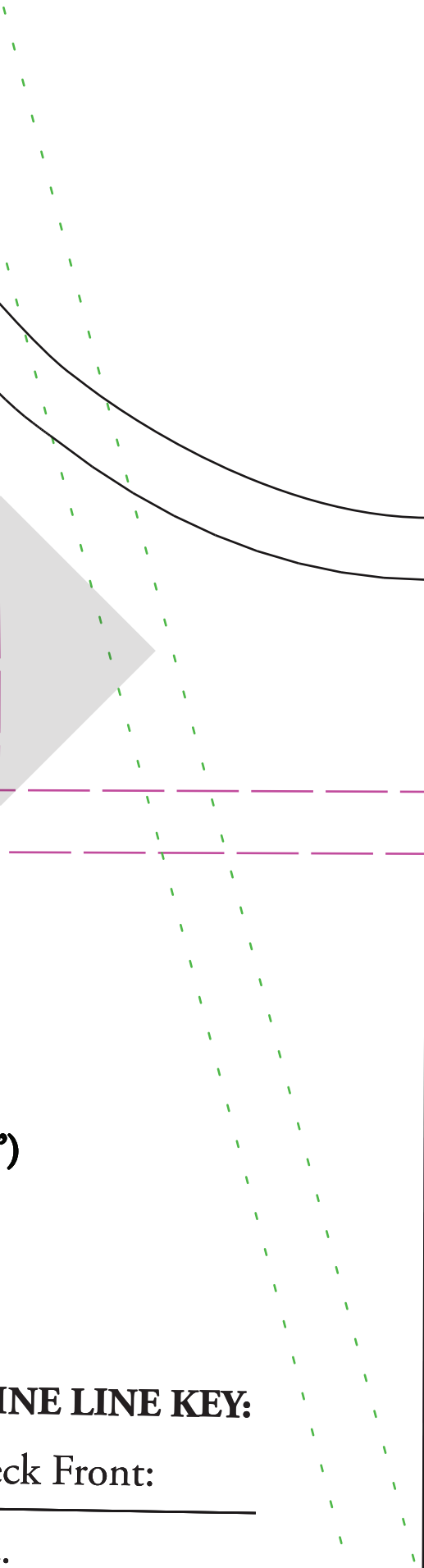
Use the following boxes to check
pattern has been printed to correct scale.

5cm x 5cm

1" x 1"

LINE LINE KEY:

Back Front:





← Optional Leg
Split notch



ROSSI & FREDY

DEEP SQUARE NECK SHOULDER TIE

Cut x4

Seam Allowance included: 1cm (3/8")

6

ROSSI & FREDY

SIZE 28

SIDE FRONT #1

Details:

Connect Pattern Piece to #2
at notches at top of pattern piece.

Once connected:

Cut x 1 Pair (2 pieces all up)

Seam Allowance included: 1cm (3/8")

Standard

FRONT FACING

SIZE 28

ROSSI & FREDY

NECKLINE LINE KEY:

Boat Neck Front: _____

V Front: _____

Standard Square Front: _____

Deep Square Front: _____

Details:

Cut x1 Pair (x2 pieces in total)
Seam Allowance included:
1cm (3/8")

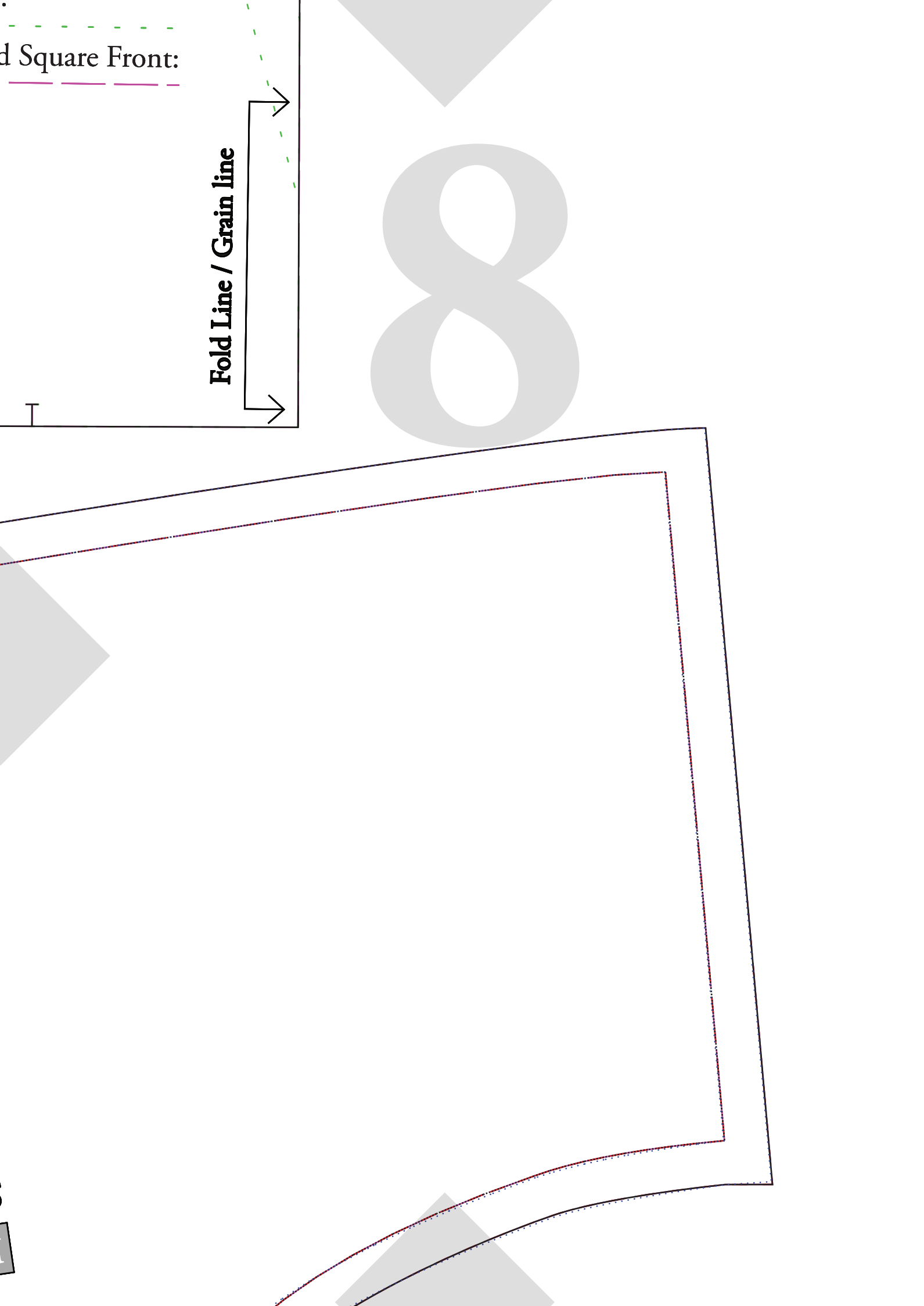
Fold Line / Grain line



nd Square Front:

Fold Line / Grain line

8



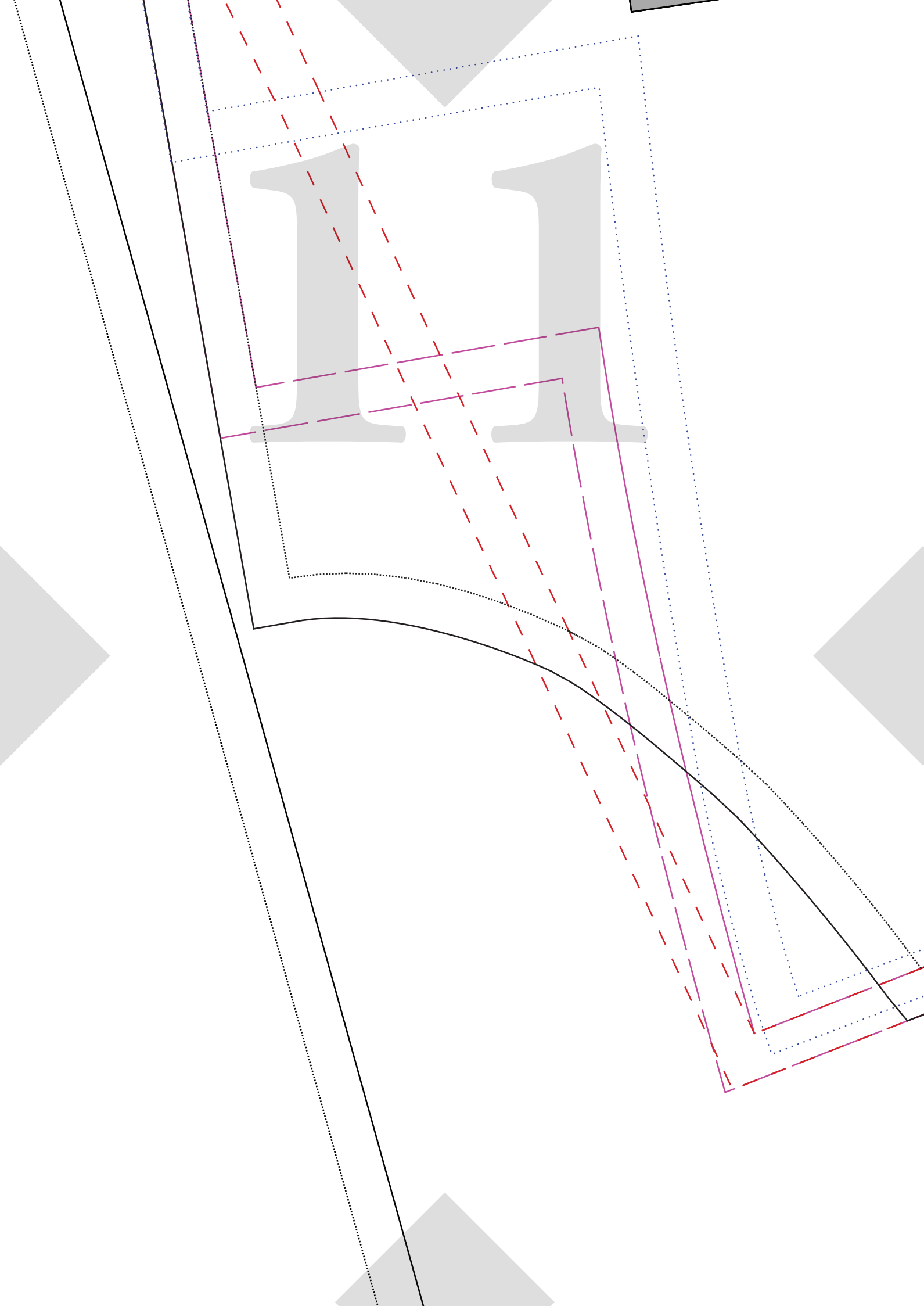


Grain Line

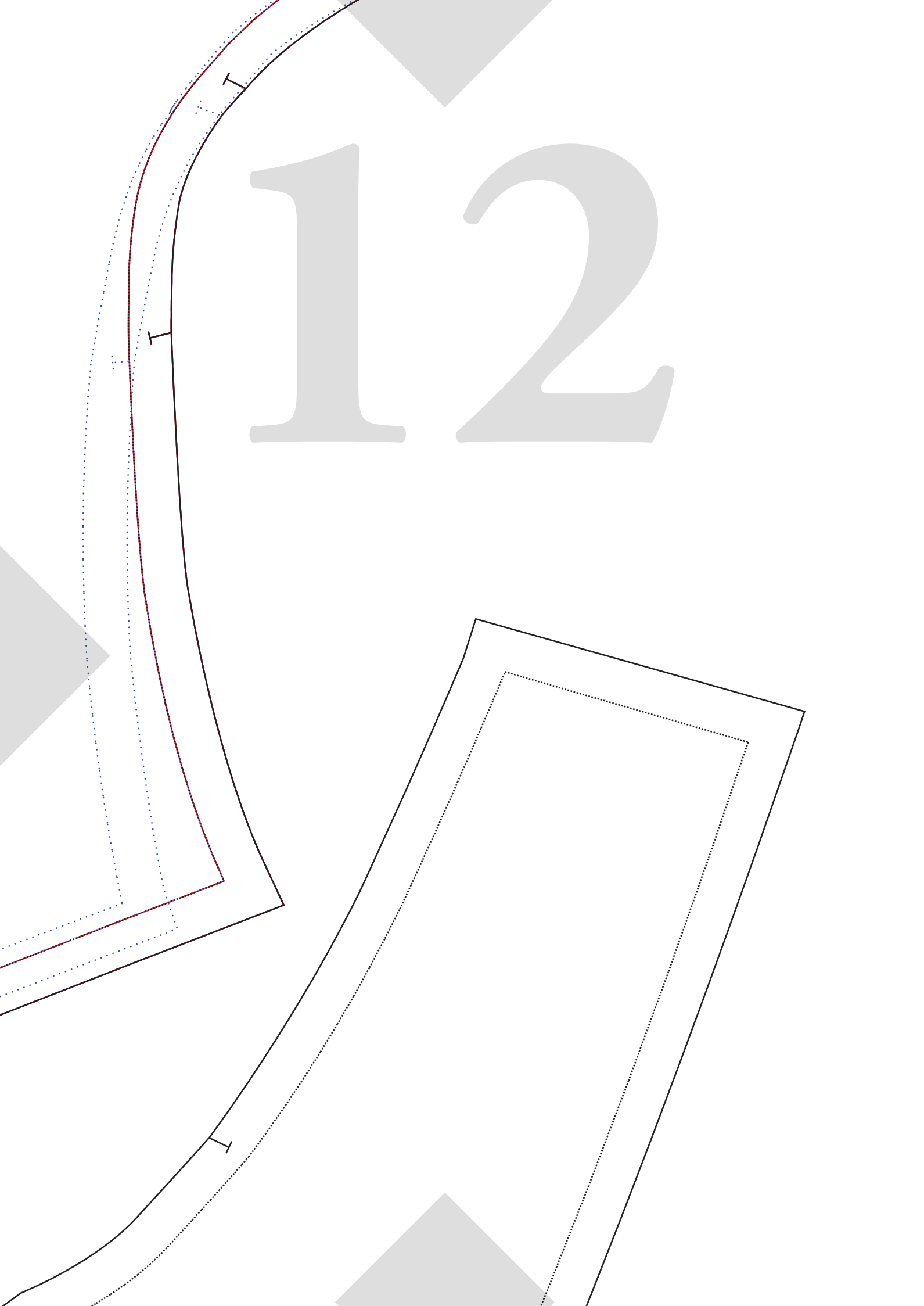


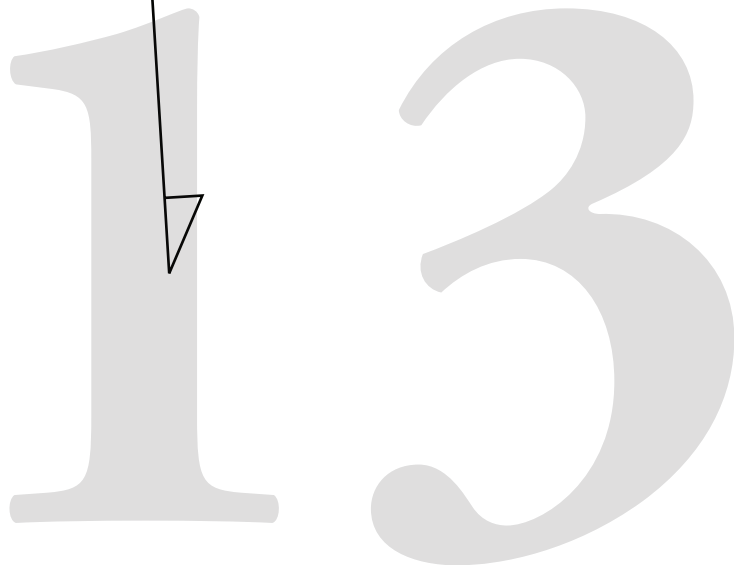
The image features a white background with four gray triangles positioned at the corners, pointing towards the center. The top triangle is at the top center, the bottom triangle is at the bottom center, the left triangle is on the left side, and the right triangle is on the right side. In the center of the page, the number '10' is displayed in a large, gray, serif font.

10



12



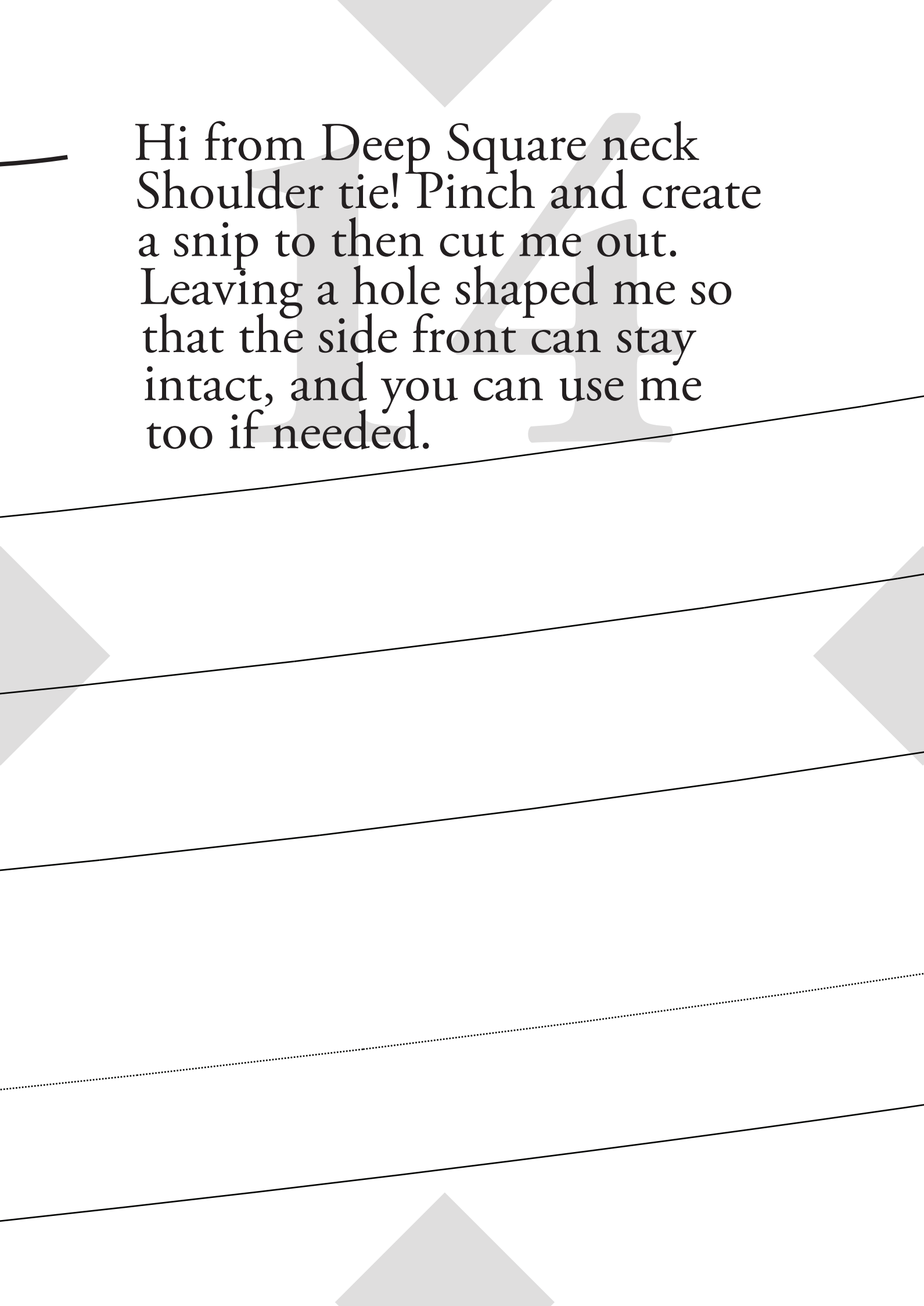


For Height 150 - 160cm

For Height 161 - 170cm

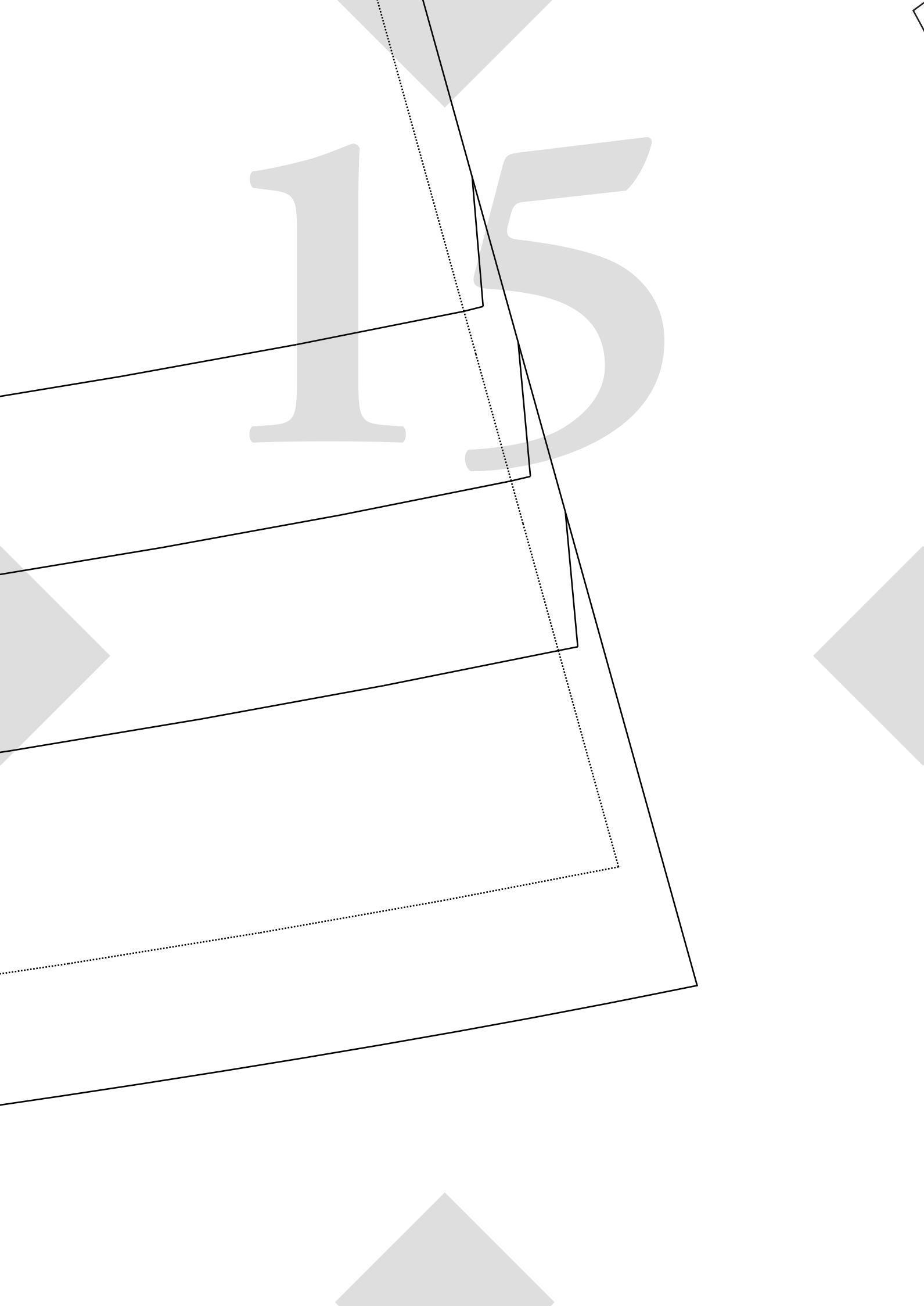
For Height 171cm+

For Height 171cm+ (Extra Long)



Hi from Deep Square neck
Shoulder tie! Pinch and create
a snip to then cut me out.
Leaving a hole shaped me so
that the side front can stay
intact, and you can use me
too if needed.

15



ROSSI & FREDY

SIZE 28

CENTRE
FRONT MAIN #2

Deep Square Neckline

Details:

Connect Pattern Piece to
CFront #1 at notches below.

Once connected:
Refer to CENTRE FRONT #1
for cutting instructions
Seam Allowance included:
1cm (3/8")

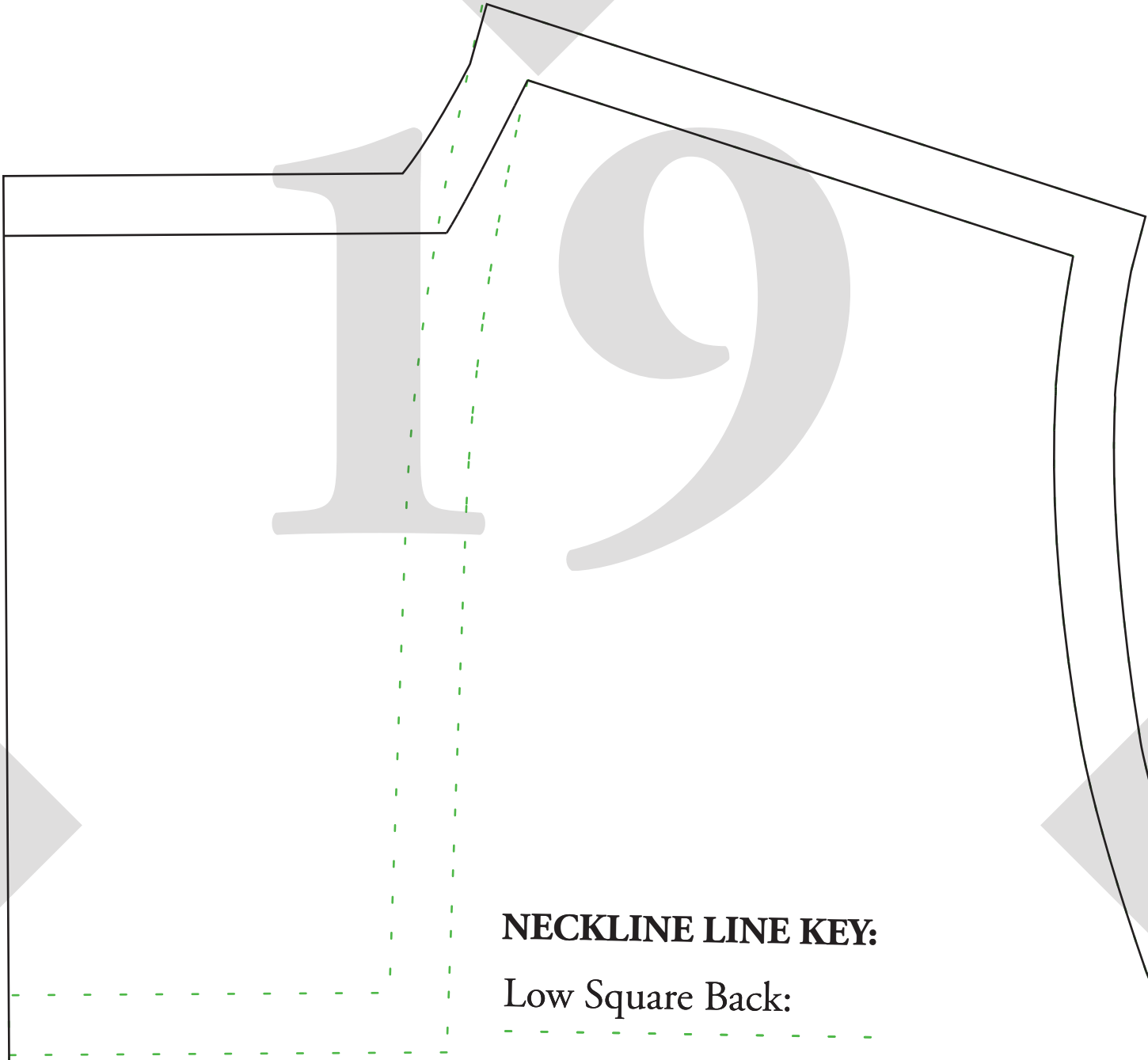
Fold Line / Grain line

17

ROSSI & FREDY

18





NECKLINE LINE KEY:

Low Square Back:

High Square Back:

ROSSI & FREDY

SIZE 28

CENTRE

BACK MAIN #2

To Match:

Standard Square +

V Neck Front



ROSSI & FREDY

SIZE 28

CENTRE

BACK MAIN #2

Low Square back

To Match:

Deep Square Front

Details:

Connect Pattern Piece to

CBack #1 at notches below.

Once connected:

Refer to CENTRE BACK #1

for cutting instructions

Seam Allowance included:

1cm (3/8")

Fold Line / Grain line

^TO MATCH

DEEP SQUARE BACK

BACK BODICE OPTION

SIZE 28

CENTRE FRONT MAIN #1

Details:

Connect Pattern Piece to CF #2
at notches at top of pattern piece

Once connected:

Cut x1 on FOLD

Seam Allowance included: 1cm (3/8")

← Optional Leg
Split notch

SIZE 28

**CENTRE BACK
MAIN #1**

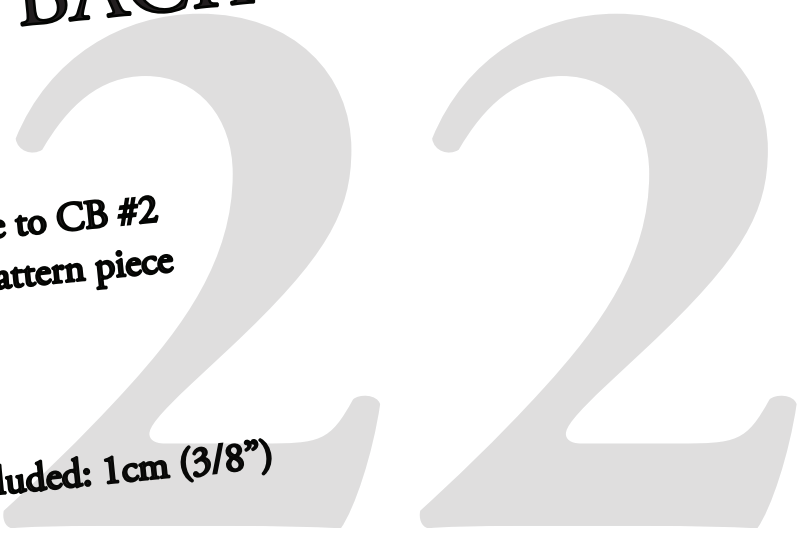
Details:

Connect Pattern Piece to CB #2
at notches at top of pattern piece

Once connected:

Cut x1 on FOLD

Seam Allowance included: 1cm (3/8")



Fold Line / Grain line

Details:

Connect Pattern Piece to
CBack #1 at notches below.

Once connected:

Refer to CENTRE BACK #1
for cutting instructions

Seam Allowance included:
1cm (3/8")

^ TO MATCH STANDARD SQUARE & V NECK FRONT BACK BODICE OPTIONS

Details:
Cut x1 Pair (x2 pieces in total)
Seam Allowance included:
1cm (3/8")

Fold Line / Grain line

For V Neck + Standard Square Front:
For V Neck + Standard Square Front:
For Deep Square Front: Low Square Neck
For V Neck + Standard Square Front: High Square Neck

24

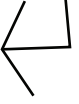
25

Fold Line / Grain line



26

Fold Line / Grain line



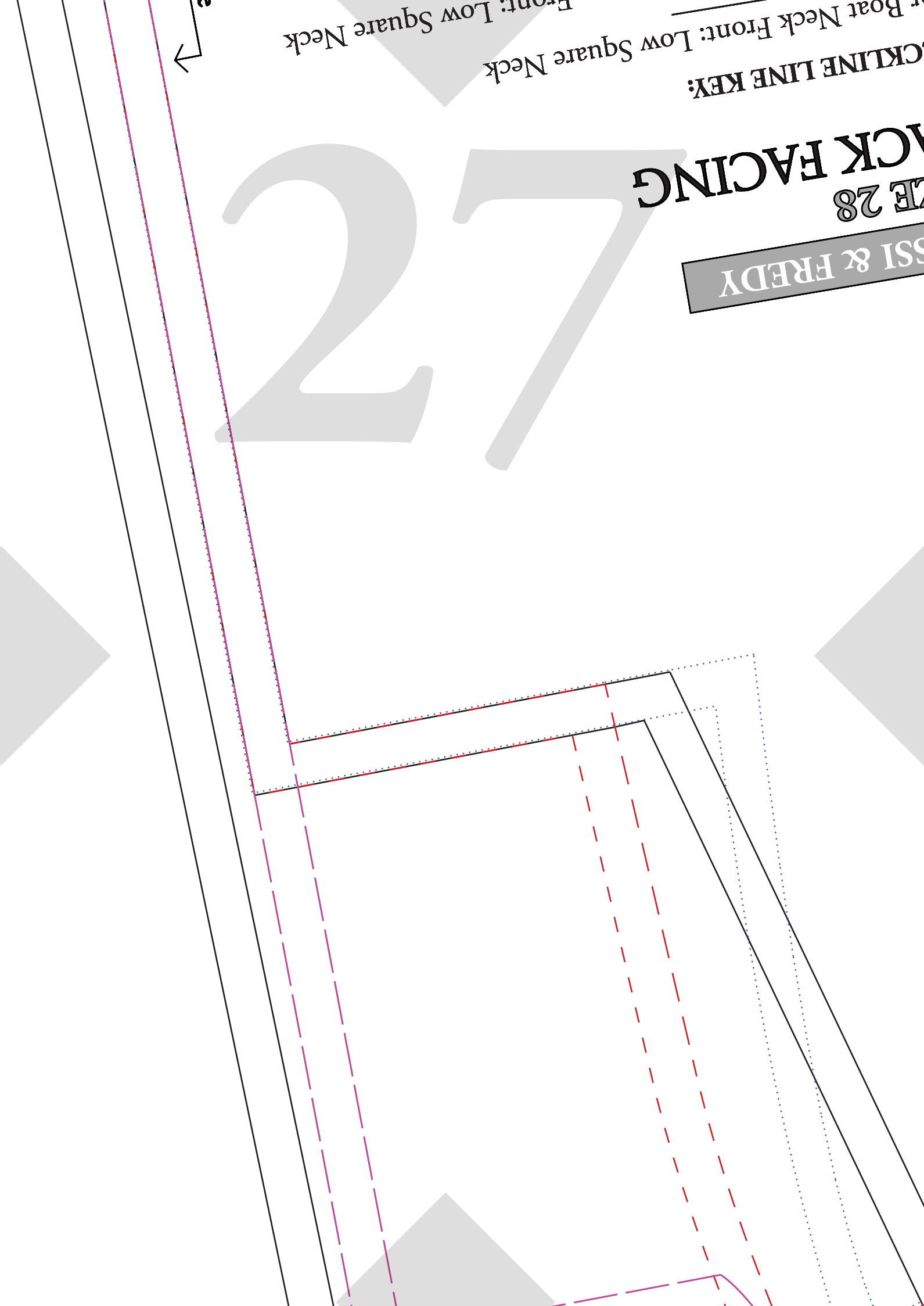
CKLINE LINE KEY:
Boat Neck Front: Low Square Neck

Front: Low Square Neck

BACK FACING
E 28

SSI & FREDY

27



NE

BA

SIZ

ROS

28

^ TO MATCH BOAT
 NECK FRONT
 BACK BODICE OPTION



Once connected:
 Refer to CENTRE BACK #1
 for cutting instructions
 Seam Allowance included:
 1cm (3/8")

/ Grain line



29

For Height 150

For Height 16

For Heig

For Height 171cm

30

- 160cm

For Height 150 - 160cm

1 - 170cm

For Height 161 - 170cm

ght 171cm +

For Height 171cm+

+ (Extra Long)

For Height 171cm+ (Extra Long)

31

Fold Line



ROSSI & FREDY

SIZE 28

CENTRE

BACK MAIN #2

Low Square back

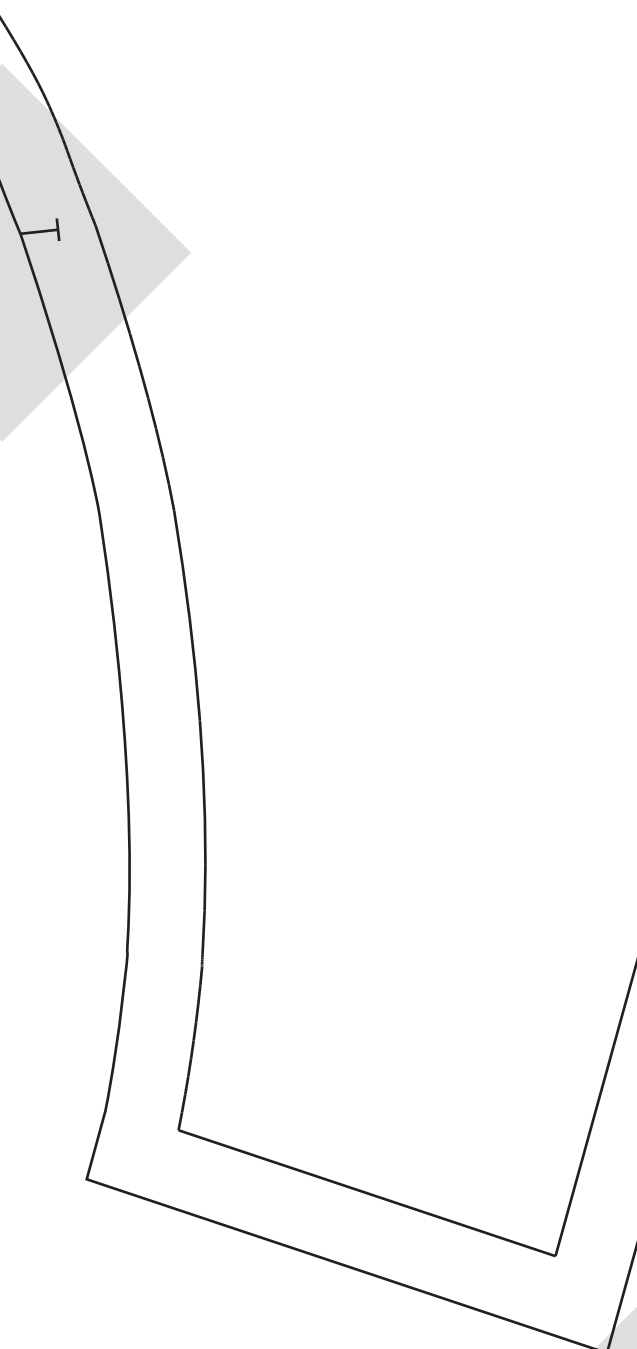
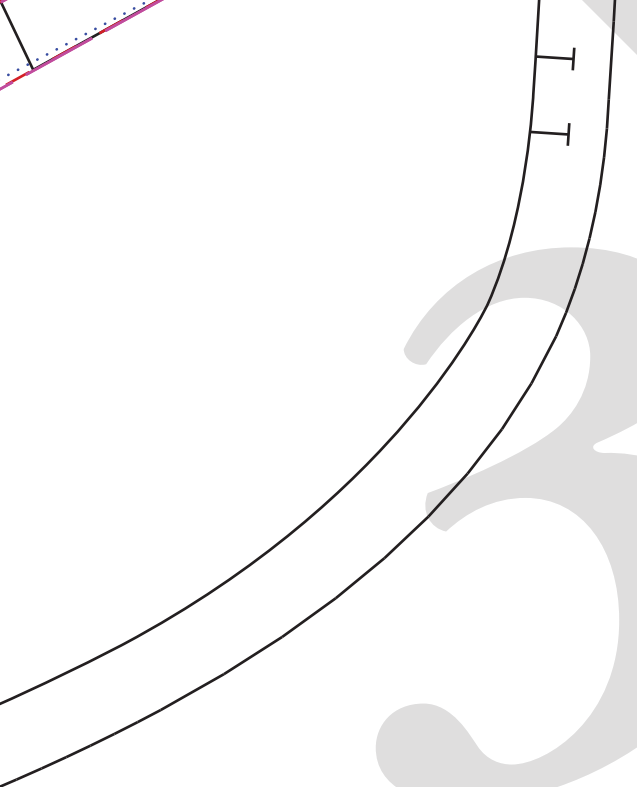
To Match:

Boat Neck Front

Details:

Connect Pattern Piece to

CBack #1 at notches below

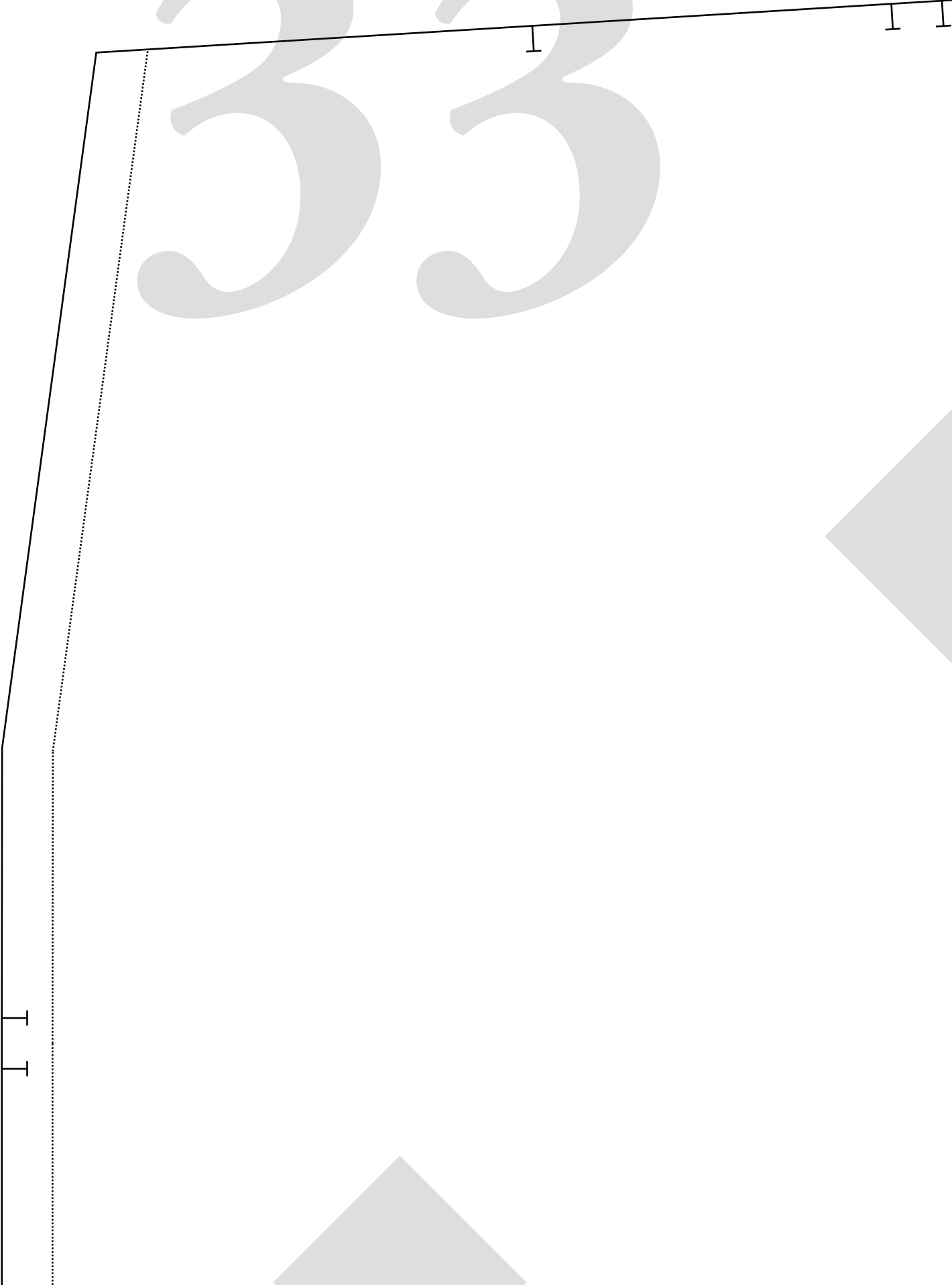




33



34



ROSSI & FREDY

SIZE 28

SHORT PUFF SLEEVE CUFF

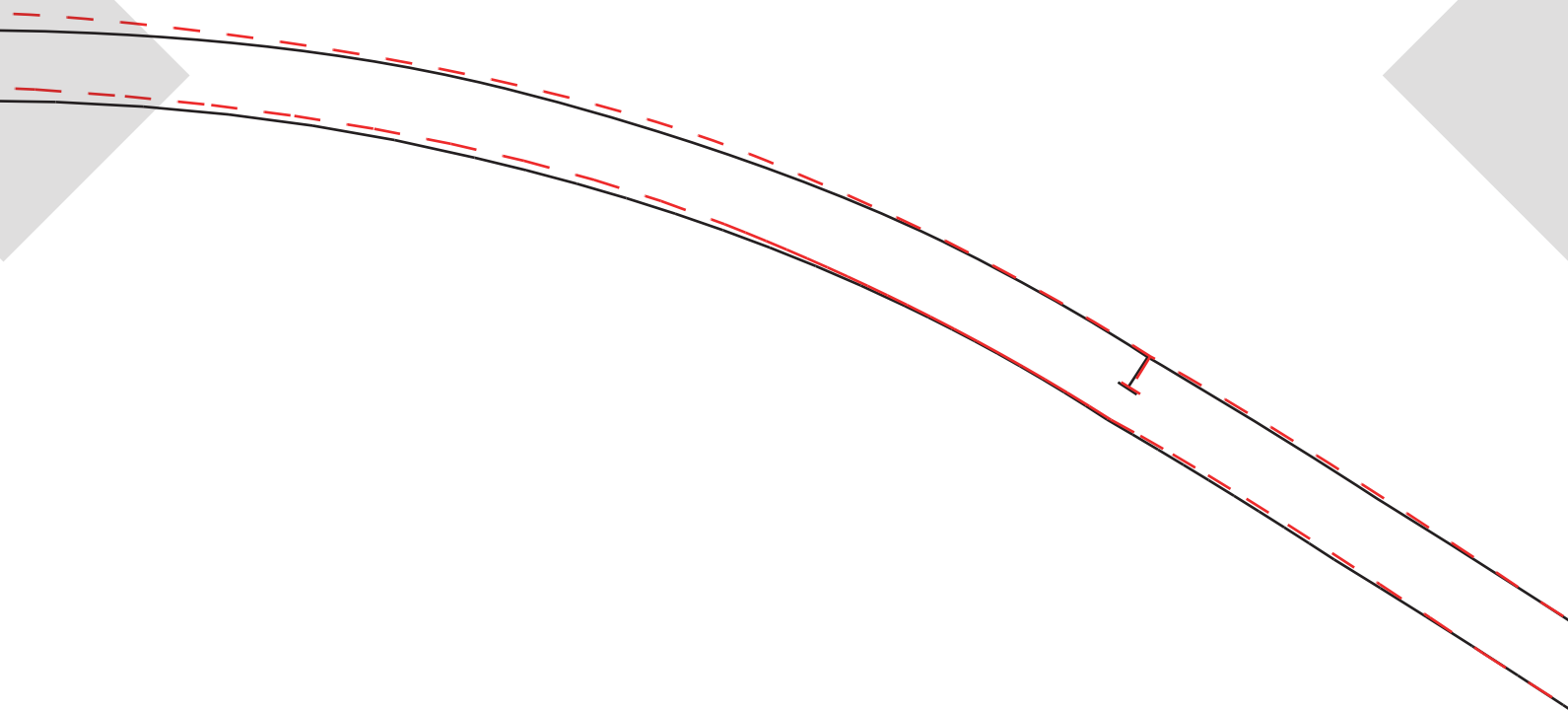
Details:

Cut x2 on Fold

(Measure upper arm to compare)

Seam Allowance included: 1cm (3/8")

Grain Line



ROSSI & FREDY

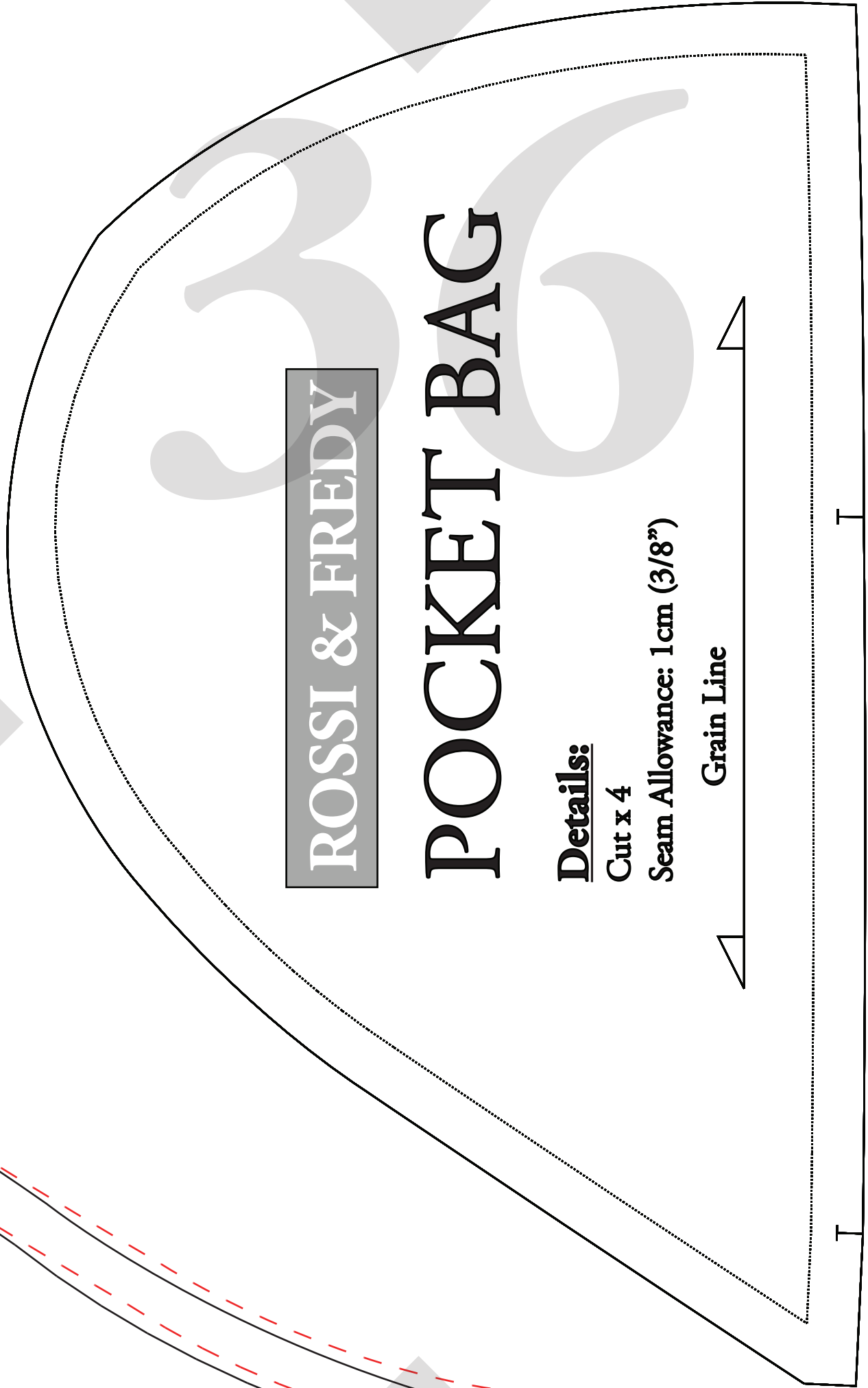
POCKET BAG

Details:

Cut x 4

Seam Allowance: 1cm (3/8")

Grain Line



ROSSI & FREDY

SIZE 28

SIDE BACK #1

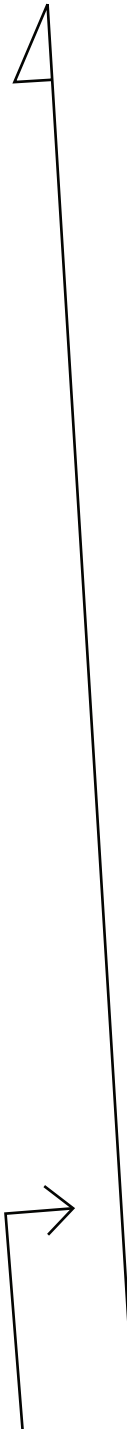
Details:

**Connect Pattern Piece to #2
at notches at top of pattern piece**

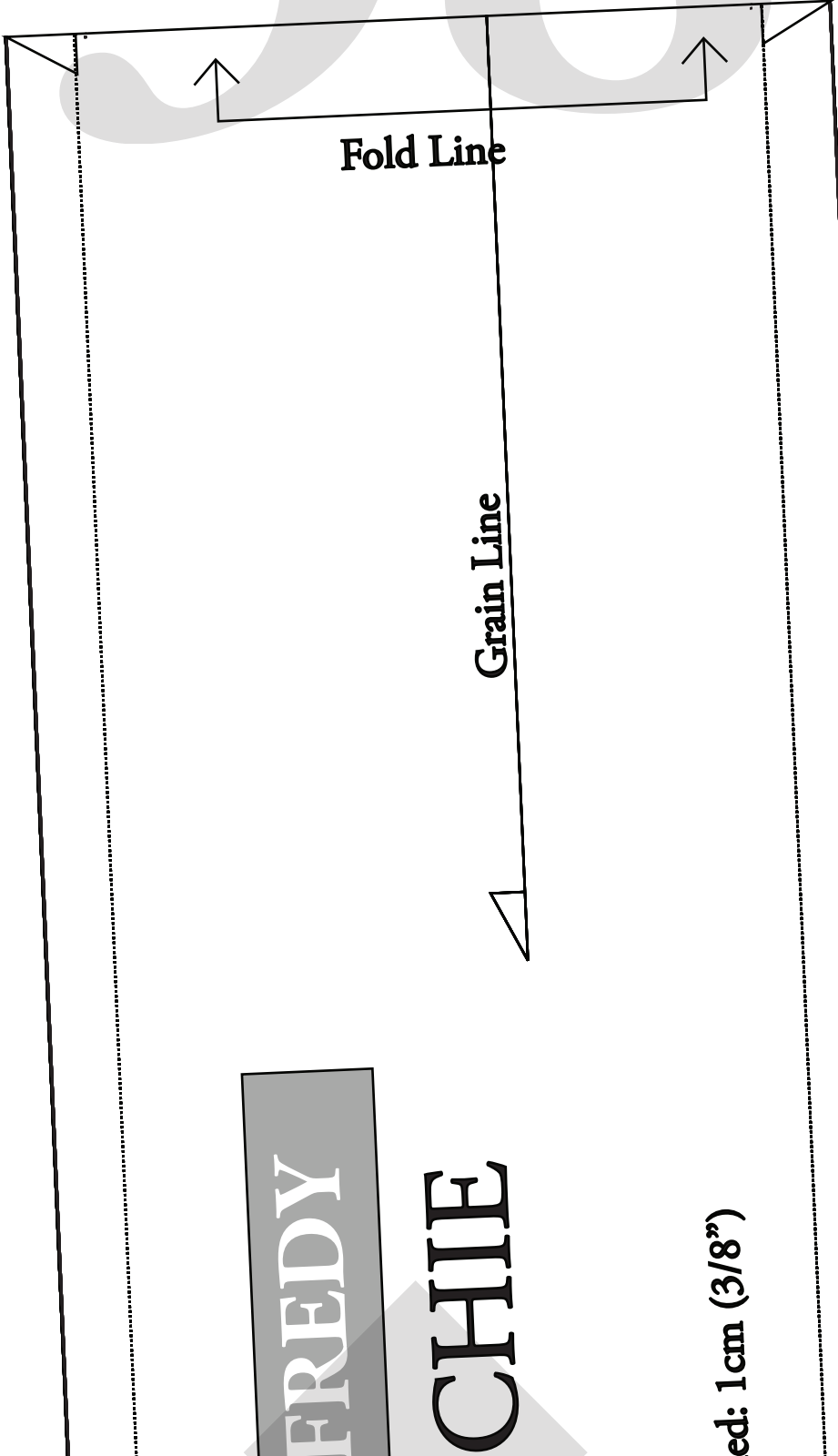
Once connected:

Cut x 1 Pair (2 pieces all up)

Seam Allowance included: 1cm (3/8")



38



FREDDY

CHIE

ed: 1cm (3/8")

Grain Line / Fold Line

ROSSI & FREDY

SIZE 28

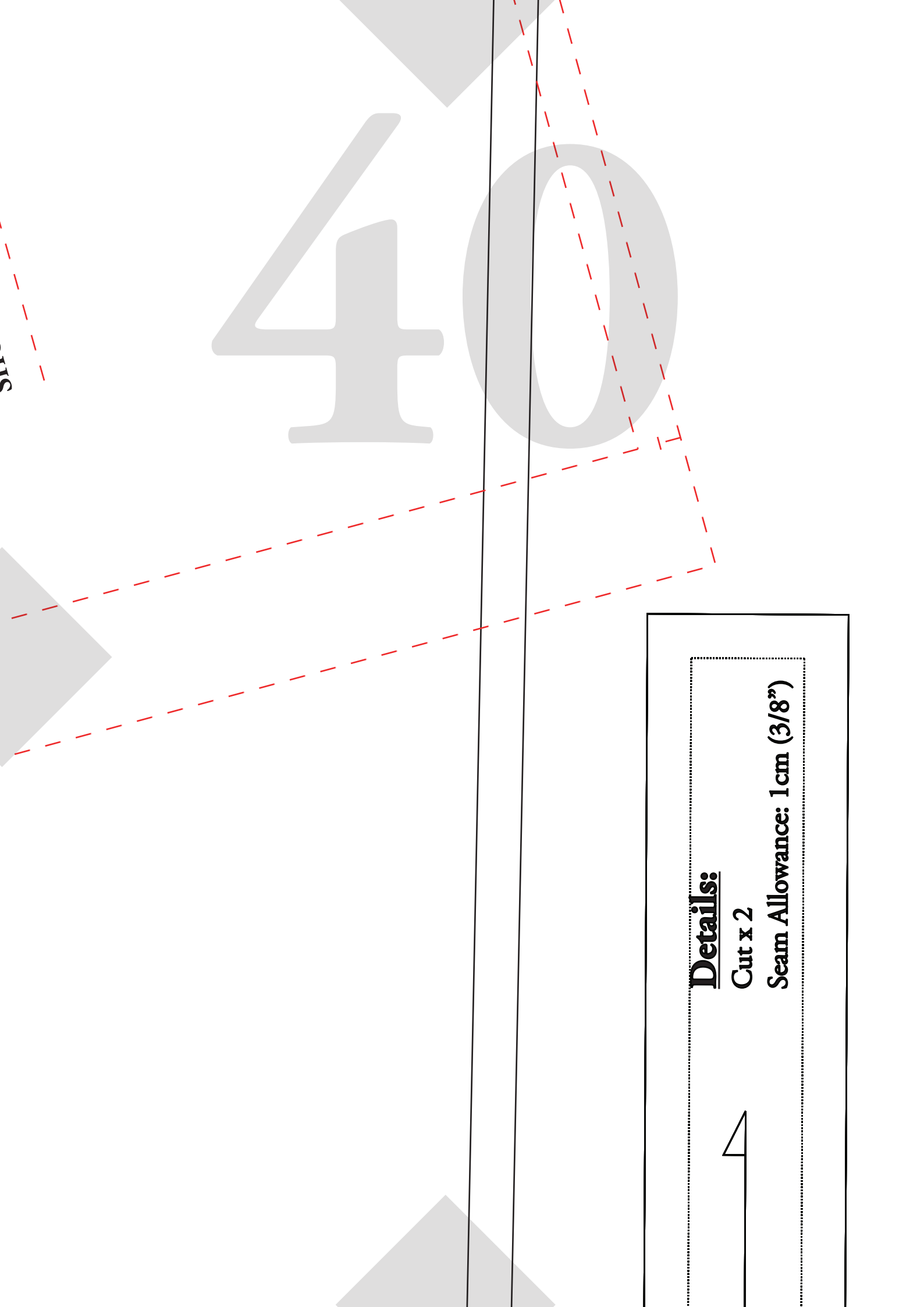
SHORT PUFF SLEEVE

Details:
Cut x 2 on fold

Seam Allowance included: 1 cm (3/8")

LINE KEY

SHORT PUFF SLEEVE:



Details:

Cut x 2

Seam Allowance: 1 cm (3/8")



41

Grain Lin





ROSSI & FREDY

HEAD SCARF

Details:

Cut x 1 on fold. Include scrunchie section
Seam Allowance included: 1cm (3/8")

ROSSI &

SCRUNCHIE

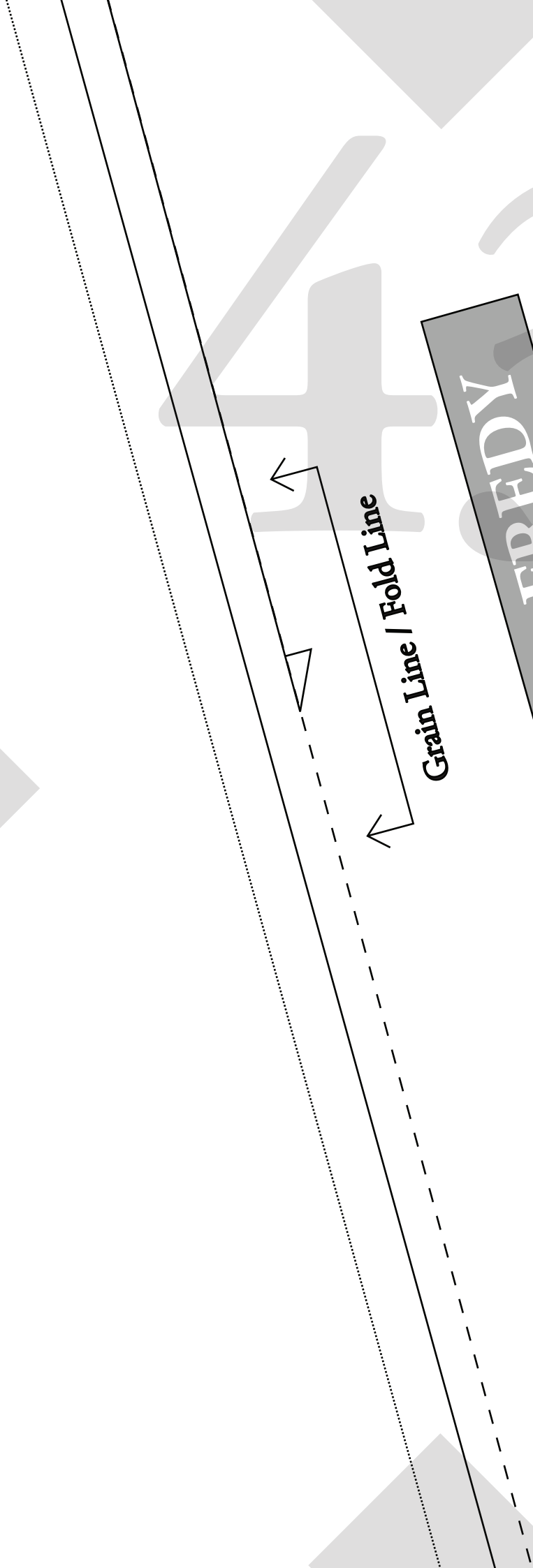
Details:

Cut x 1 on fold
Seam Allowance included

ROSSI & FREDY

**LONG SHIRRED
SLEEVE**

SIZE 28



Details:
Cut x 2 on fold
Seam Allowance included: 1cm (3/8")

LINE KEY

LONG SHIRRED:

ROSSI & FREDY

BACK NECK TIE



45

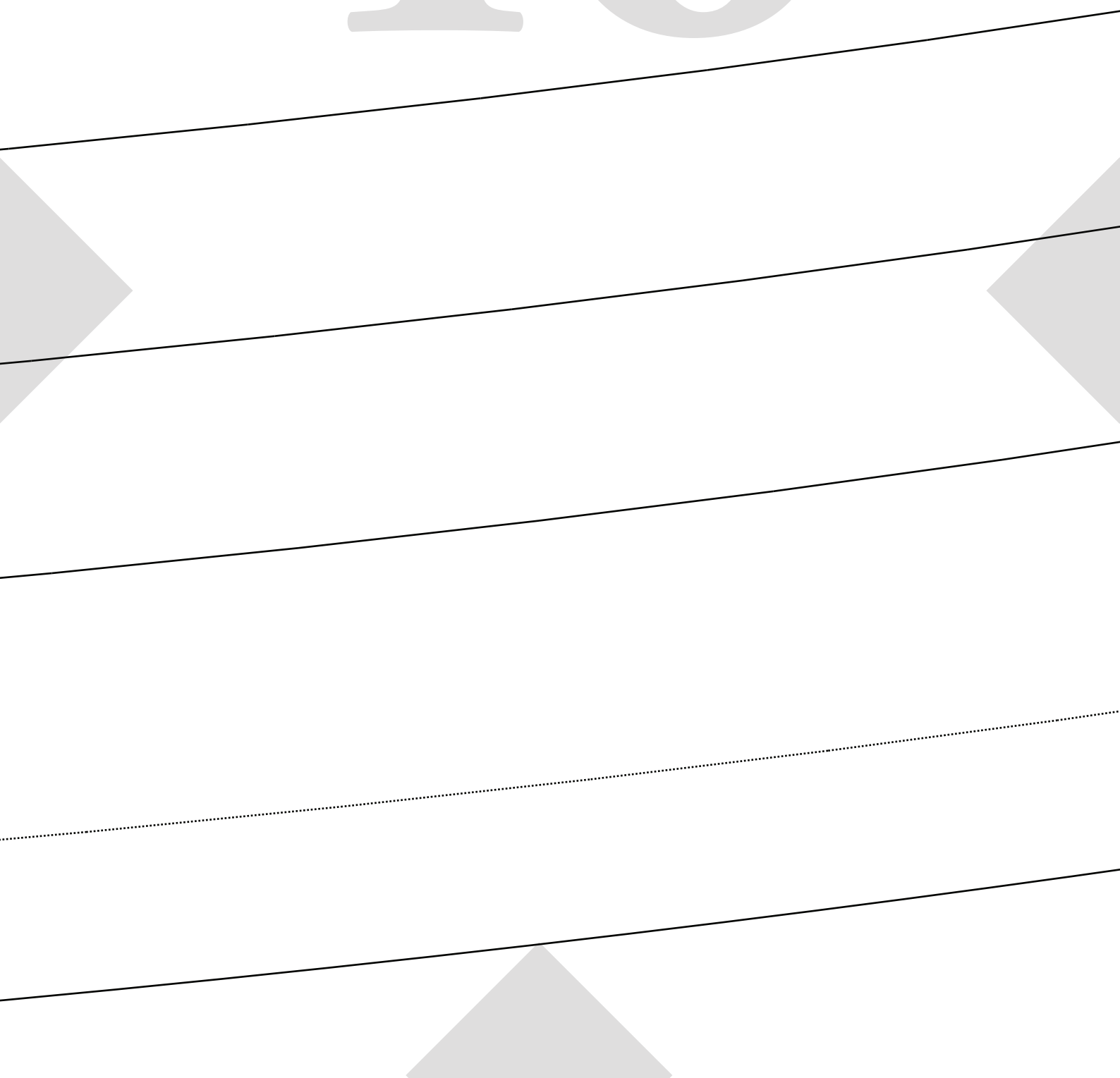
For Height 150 - 160cm

For Height 161 - 170cm

For Height 171cm+

For Height 171cm+ (Extra Long)

Hi from Scrunchie & Head scarf! Pinch and create a snip to then cut me out. Leaving a hole shaped me so that the side front can stay intact, and you can use me too if needed.



47

SU

Seam Allowance included: 1cm (3/8")
Refer to SIDE BACK #1 for cutting instructions

Once connected:
Connect Pattern Piece to Back #1
at notches below.

Details:
SIZE 28
SIDE BACK #2

Grain Line

ROSSI & FREDY

Thin / Standard Waist
Wrap Add on

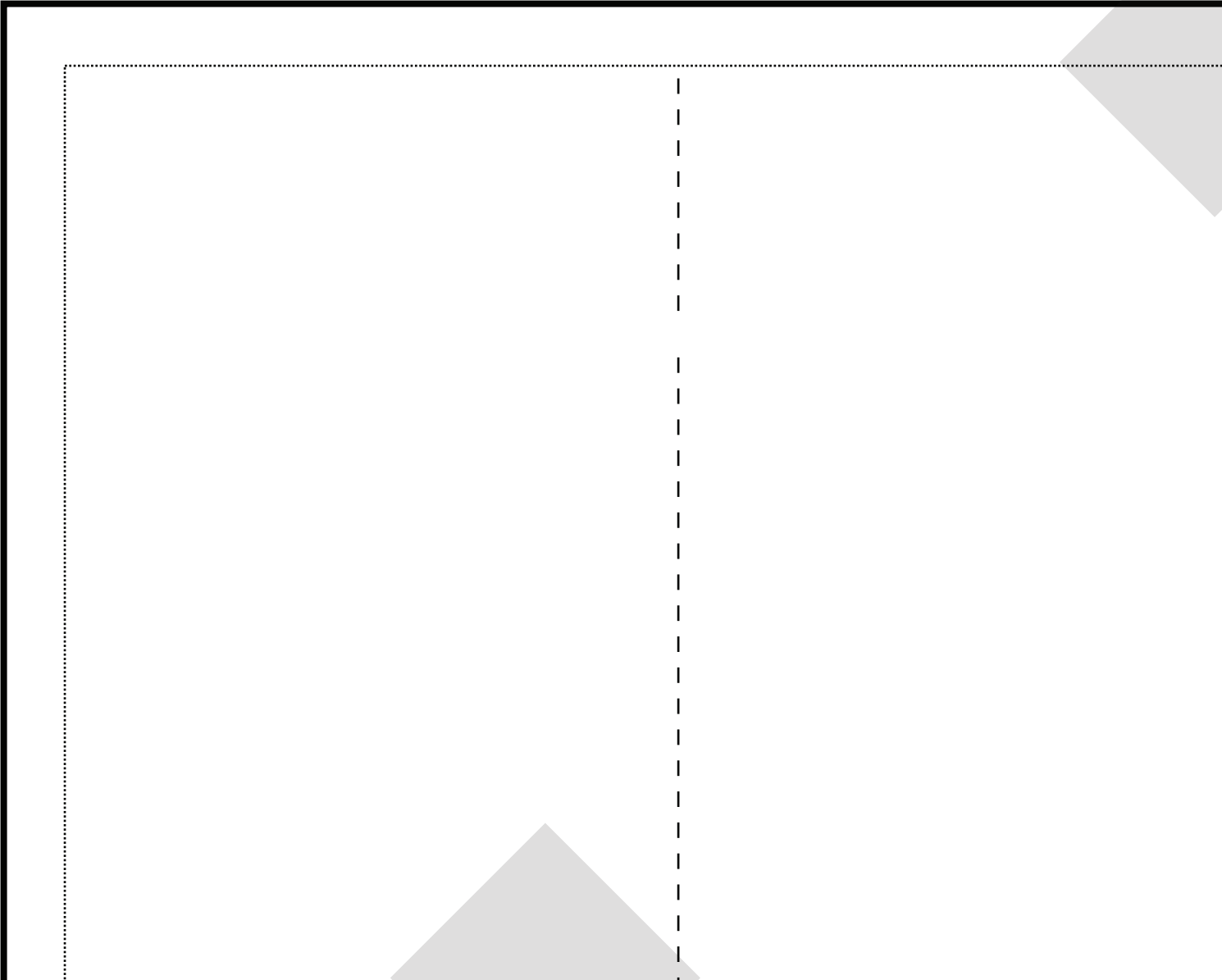
SIZE 16 - 30

Grain Line

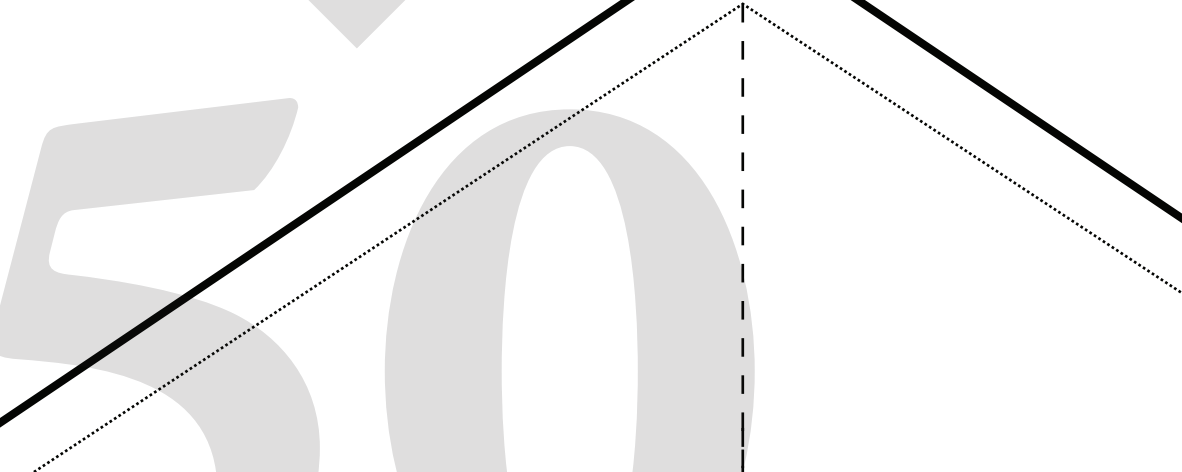
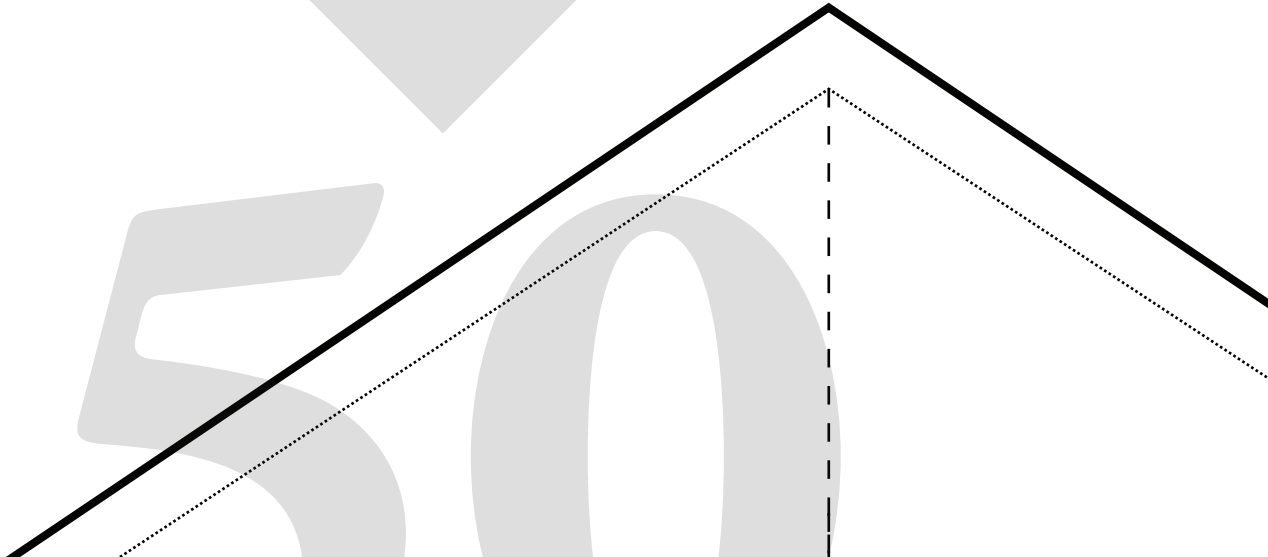
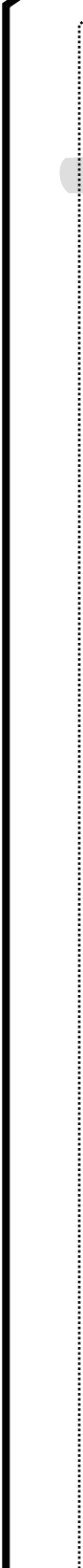
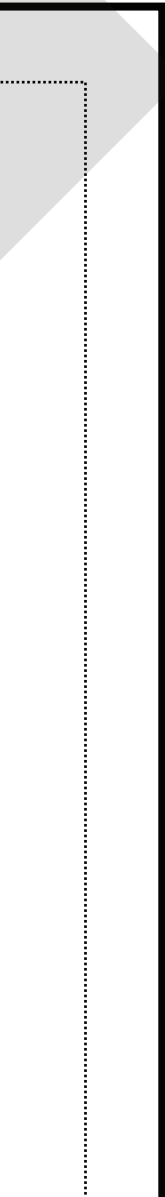
Details:

Cut x 2 Pairs (all up x4 pieces)
Seam Allowance Included: 1cm (3/8")

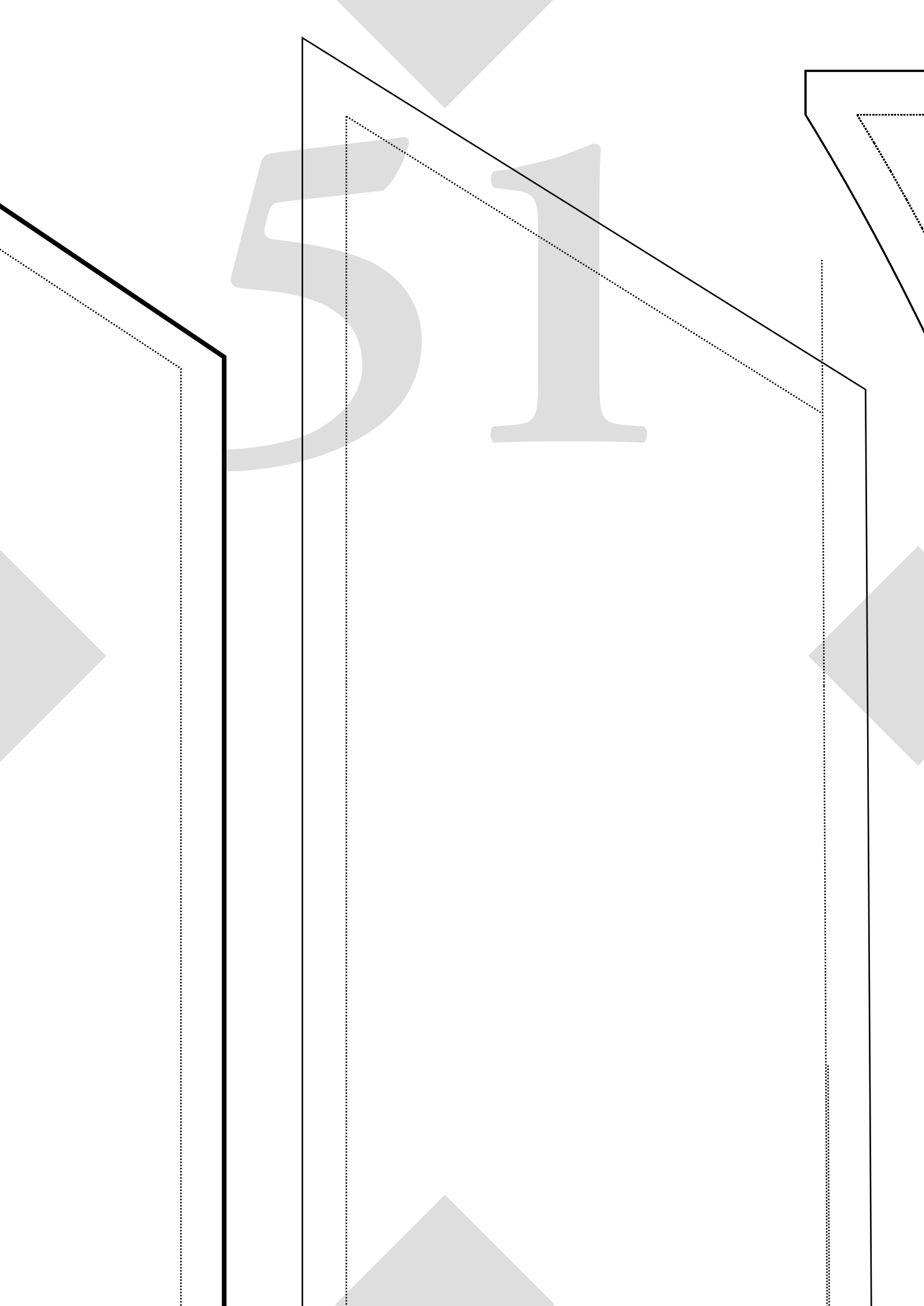
49



550



51



ROSSI & FREDY

SIZE 22-30

TWO TONE WAIST WRAP #1

Details:

Connect Pattern Piece to #2

Once Connected :

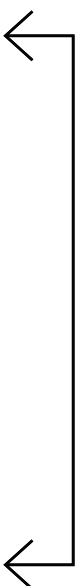
Cut x 2 in Primary Colour (one pair)

Cut x 2 in Secondary Colour (one pair)

Seam Allowance included: 1cm (3/8")



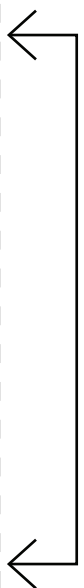
Grain Line / Fold Line



53



Grain Line / Fold Line



54



55

Grain Line



56

ROSSI & FREDY

SIZE 16 – 30

THIN WAIST WRAP #1

Details:

Connect Pattern Piece to #2

Once connected:

Cut x 2

Seam Allowance included: 1cm (3/8")

Join Connecting Piece Here



ROSSI & FREDY

SIZE 16 – 30

THIN WAIST WRAP #2

Details:

Connect Pattern Piece to #1

See Wrap #1 once connected for cutting instruction

Seam Allowance included: 1cm (3/8")

Join Connecting Piece Here



ROSSI & FREDY

SIZE 22 - 30

TWO TONE WAIST WRAP #2

Details:

Connect Pattern Piece to #1
See Wrap #1 once connected
for cutting instructions
Seam Allowance included: 1cm (3/8")

Join Connecting Piece Here

60

