

A4 PRINTING INSTRUCTIONS

Before you get started on creating your Rossi of Fredy Wrap, make sure to read the below notes so that you can make sure your printer is calibrated and prints the patterns to the correct size.

Before you begin, please make sure you are printing on A4 paper with an A4 printer, not letter paper as the small difference in the paper size can mean your patterns don't print correct. A4 measures 210 x 297mm

1. Select Layers / styles:

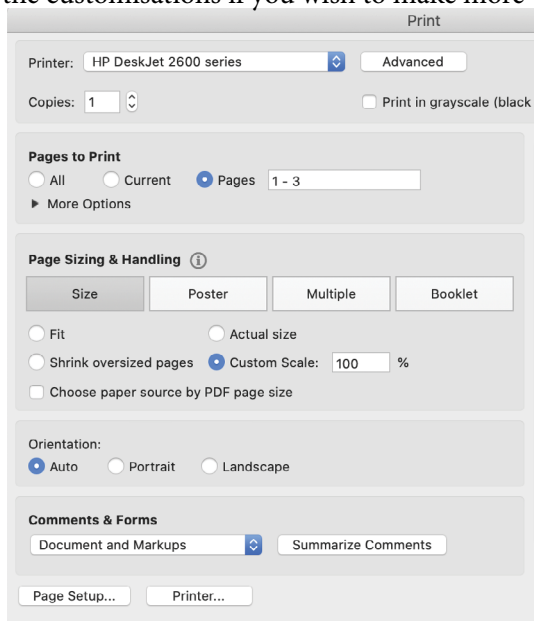
Make sure you have gone through the PDF and selected all necessary layers + Customisations that you need for your Rossi / Fredy Wrap in instructions. You can print out all the customisations if you wish to make more variations in future.

2. Print the first three pages as a test print:

We strongly suggest printing the first three pages as a test to make sure everything is set up correctly, to save time, paper and the environment.

When printing in Adobe Acrobat, do as follows:

- File > Print
- Select your printer
- Click 'Pages' and then type '1 - 3' (for test print)
- Click 'Custom Scale' and type '100%'
- Click 'PRINT'

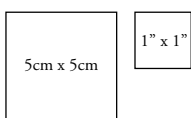


3. Calibrate and measure

When printing, although you would've selected '100%', most common household printers will print with a white border. Don't worry, this won't affect measurements and you **SHOULD NOT** trim the borders. However, to check this is correct for your printer – we have provided two tests of calibration squares.

3a: Single Square Calibration

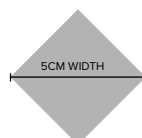
On the first pattern page, you will see a 5x5cm square and a 1"x1" square. Using your ruler, measure these squares to make sure they (along with your patterns) have printed to the correct scale.



Note: These calibration squares are an example only and are not printed to scale.

3b: Across-Page Diamond Calibration

You will then see a grey diamond split across the first two pattern pages (similar to the below example). Simply measure from one corner of the diamond to the other corner. This should measure 5cm from left point to right point.



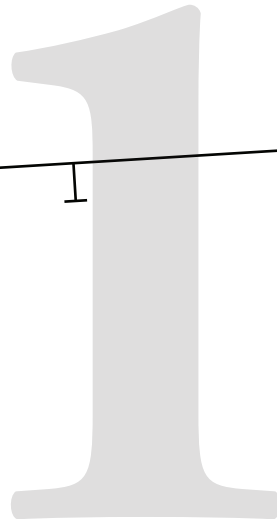
Note: This diamond is an example only and is not printed to scale.

4. You're all set and ready to go!

Once you have successfully tested and printed the first couple of pages, and double-checked the calibration as per steps 3a and 3b, you're all set to go!

5cm x 5cm

1" x 1"



ROSSI & FREDY

SIZE 16

SIDE FRONT #1

Details:

Connect Pattern Piece to #2
at notches at top of pattern piece.

Once connected:

Cut x 1 Pair (2 pieces all up)

Seam Allowance included: 1cm (3/8")

Grain Line

ROSSI & FREDY

SIZE 16

SIDE FRONT #2

Details:

Connect Pattern Piece to front #1
at notches below.

Once connected:
Refer to SIDE FRONT #1 for cutting
instructions
Seam Allowance included: 1 cm (3/8")



A technical drawing of a garment's center front main piece. The pattern is shown with a solid black outline and a dashed green line indicating a neckline. A large, faint watermark '3' is visible in the background. The text 'ROSSI & FREDY' is enclosed in a grey rectangular box. Below it, the text 'SIZE 16' and 'CENTRE FRONT MAIN #2' are displayed. A 'Details' section provides instructions on connecting the pattern piece to another piece and refers to cutting instructions. A 'NECKLINE LINE KEY' section defines the line styles used in the pattern: a solid line for Boat Neck Front, a dashed green line for V Front, and a dashed purple line for Standard Square Front. The pattern piece has a curved neckline and a small notch on the left side.

ROSSI & FREDY

SIZE 16

**CENTRE
FRONT MAIN #2**

Details:

**Connect Pattern Piece to
CFront #1 at notches below.**

**Once connected:
Refer to CENTRE FRONT #1
for cutting instructions
Seam Allowance included: 1cm (3/8")**

NECKLINE LINE KEY:

Boat Neck Front:



V Front:



Standard Square Front:

t h e b o l d o n e

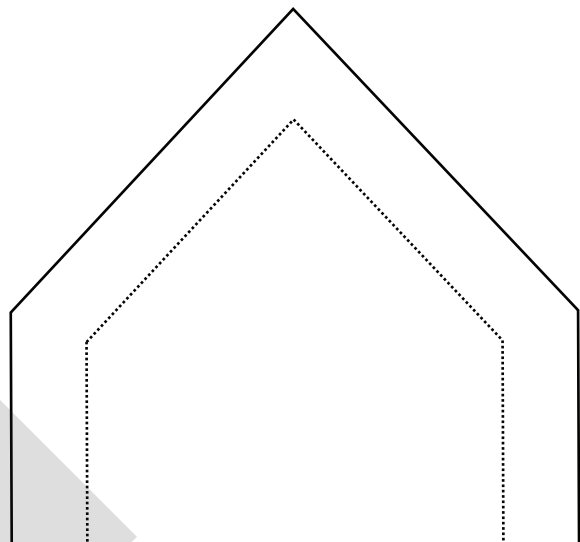
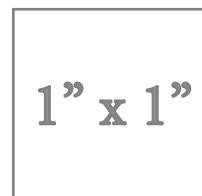
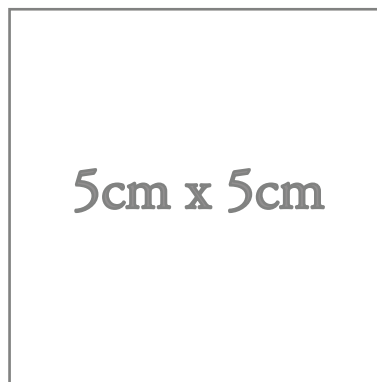
Fredy Wrap + Rossi Wrap – Size 16

© The Bold One Workshop Patterns.
These patterns are copyrighted by
The Bold One Patterns and may not
be copied, shared, or resold.

Reproducing this pattern to sell items
commercially is prohibited.

Seam allowance = 1cm (3/8")

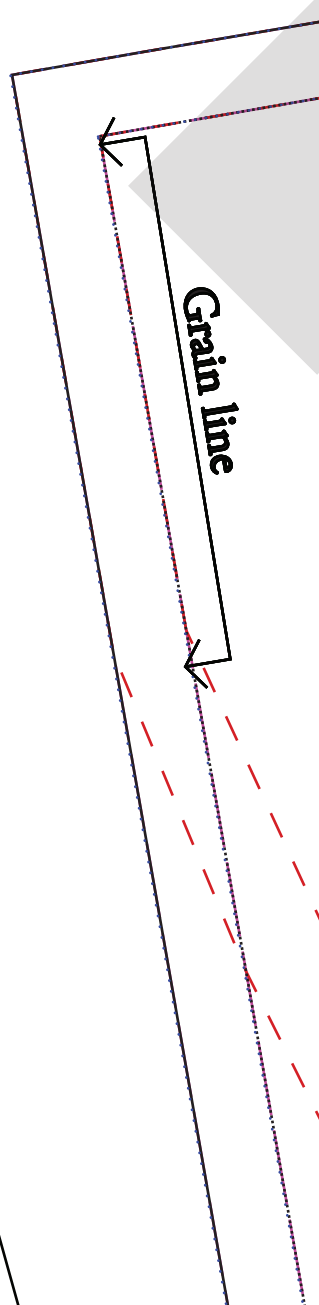
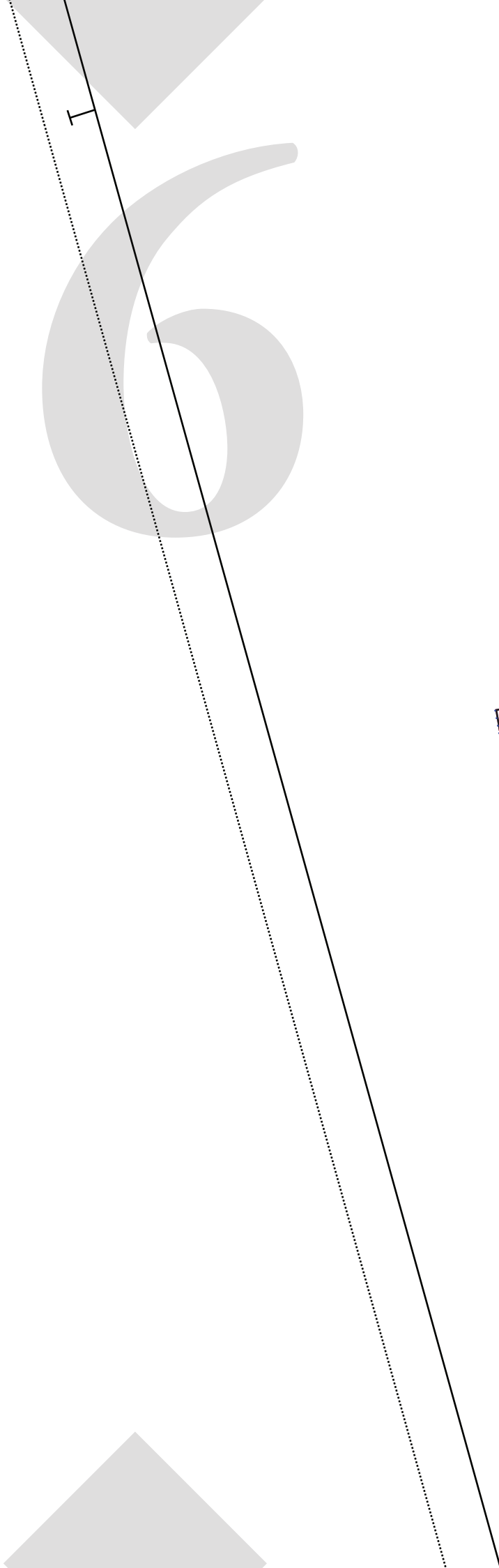
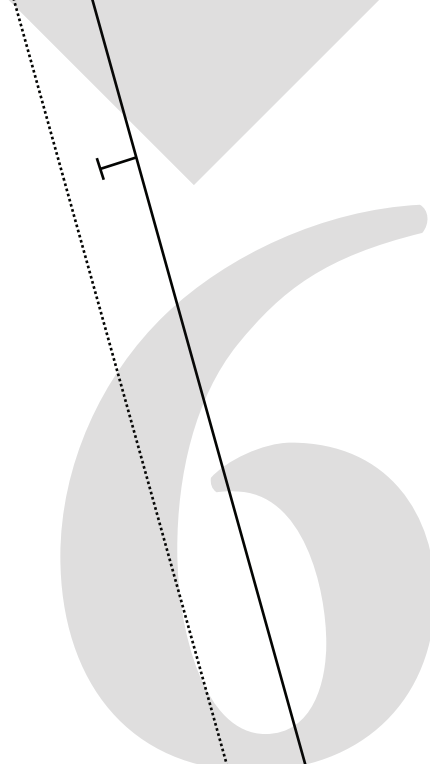
Use the following boxes to check
pattern has been printed to correct scale.



5

← Optional Leg
Split notch





ROSSI & FREDY

**SIZE 16
FRONT FACING**

NECKLINE LINE KEY:

Boat Neck Front:

V Front:

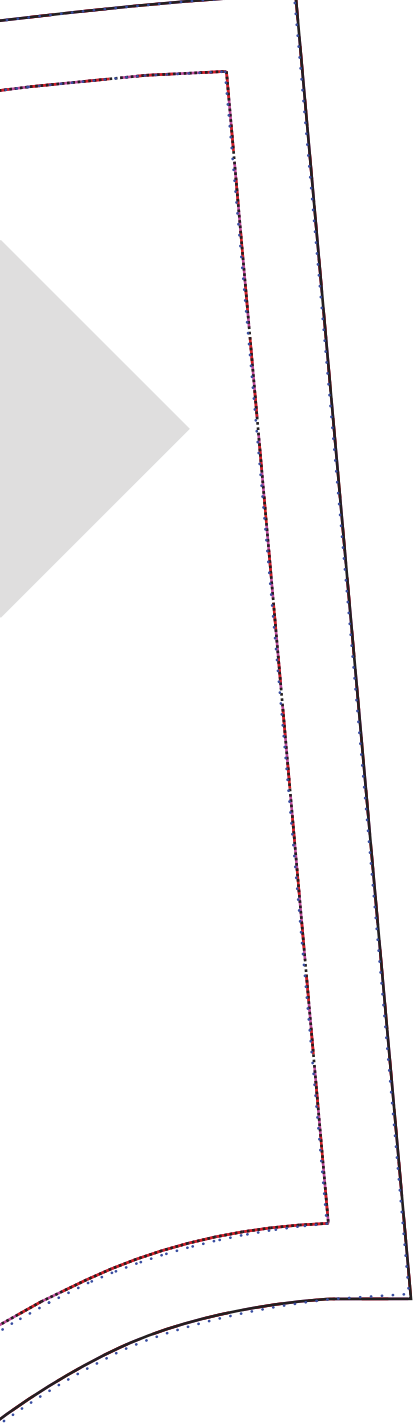
Standard Square Front:

Deep Square Front:

Details:
Cut x1 Pair (x2 pieces in total)
Seam Allowance included:
1cm (3/8")

Fold Line / Grain line

Standard Square Front.



8

ROSSI WRAP

DEEP SQUARE NECK SHOULDER TIE

Cut x4

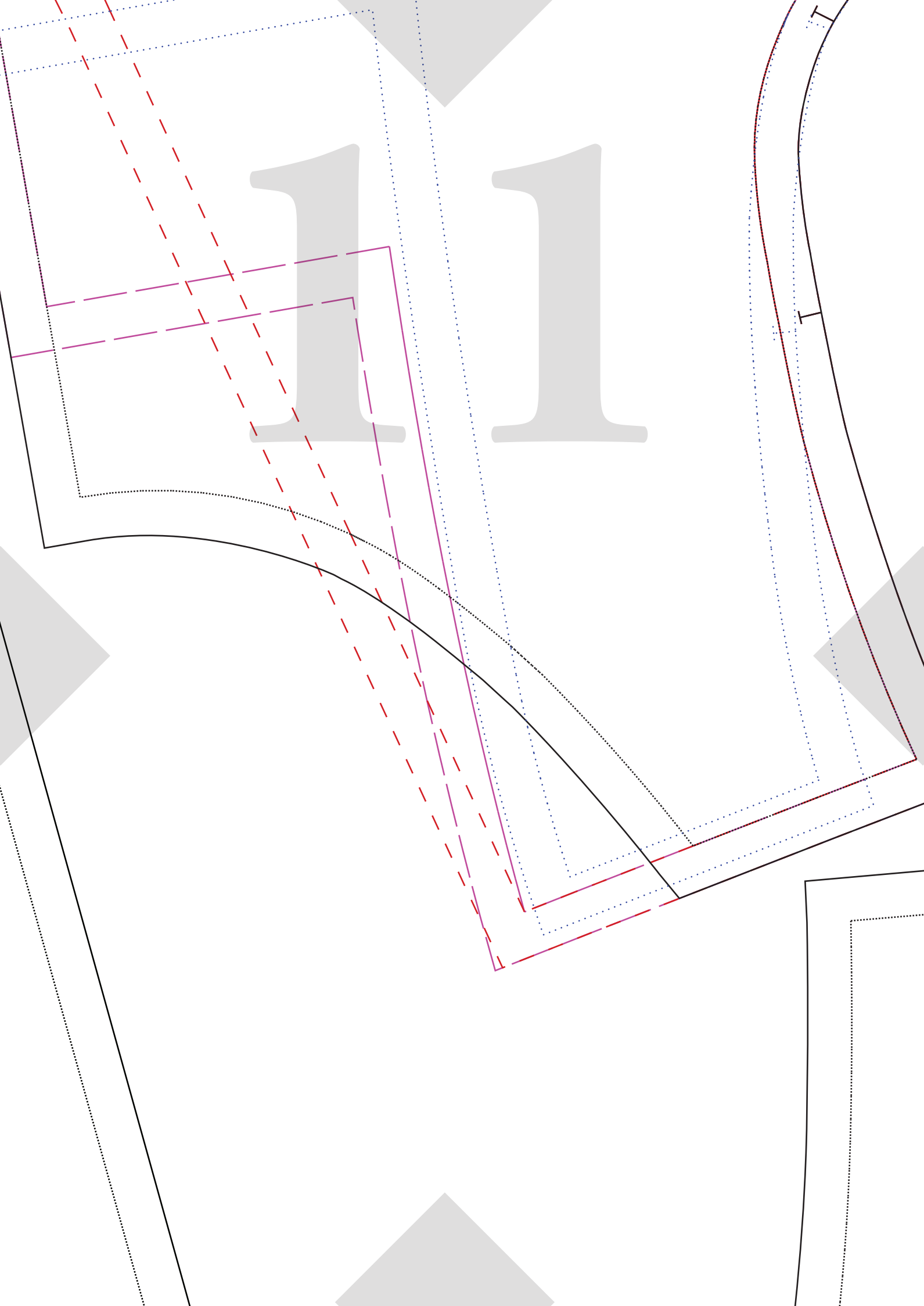
Seam Allowance included: 1cm (3/8")

Grain Line



10

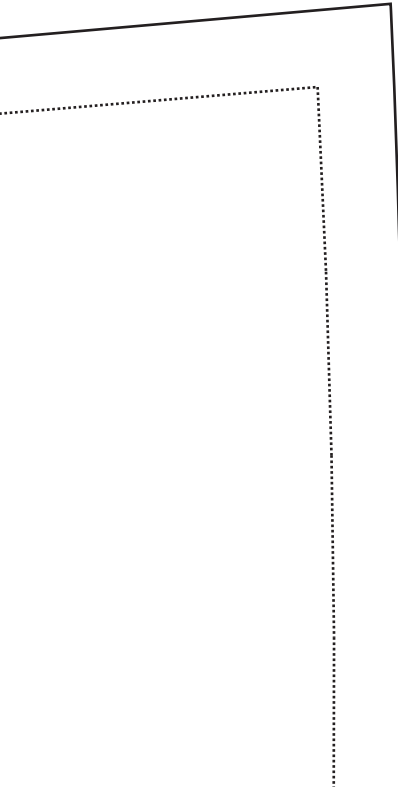
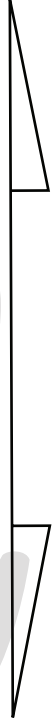


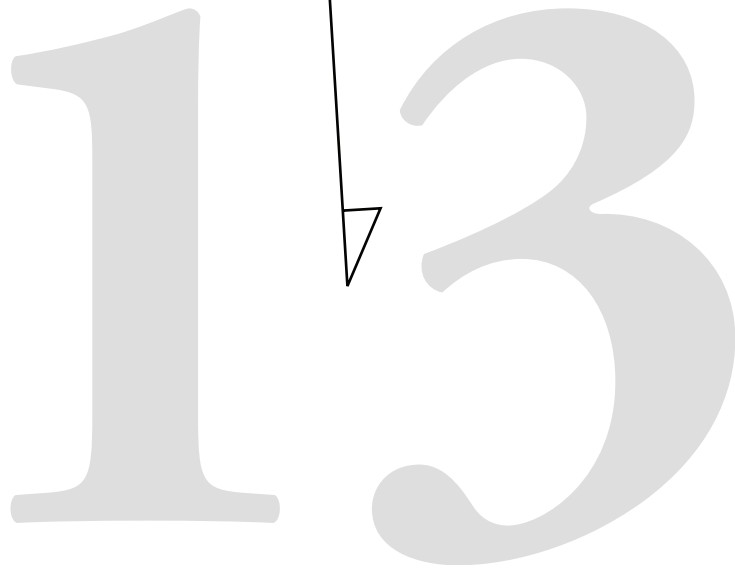


1

2

Grain Line





13

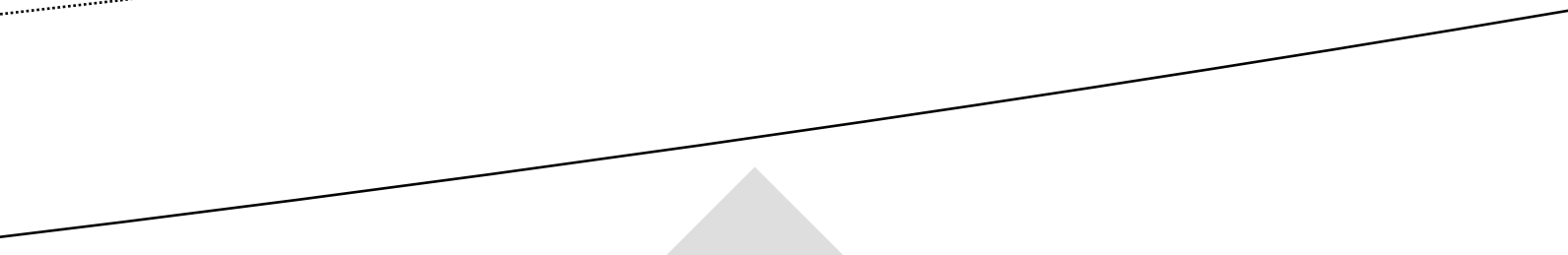
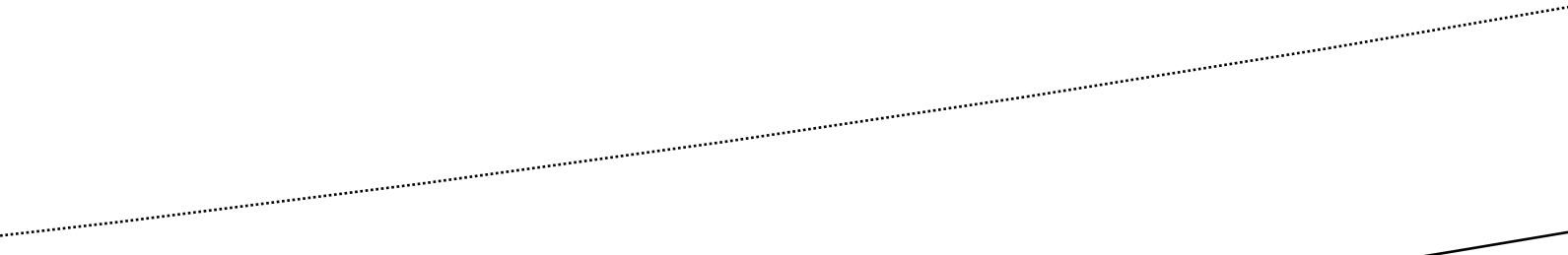
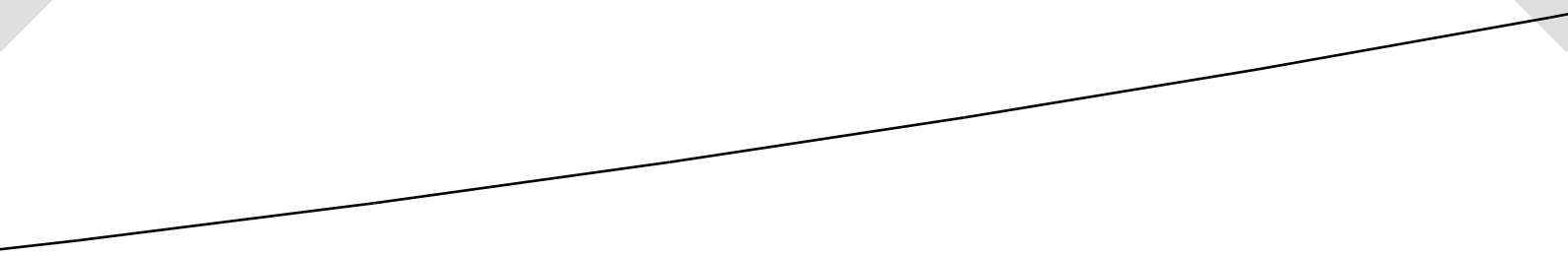
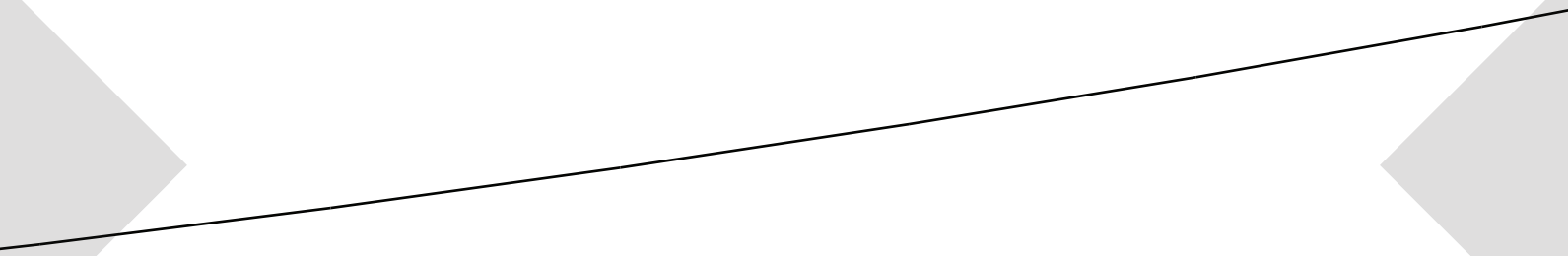
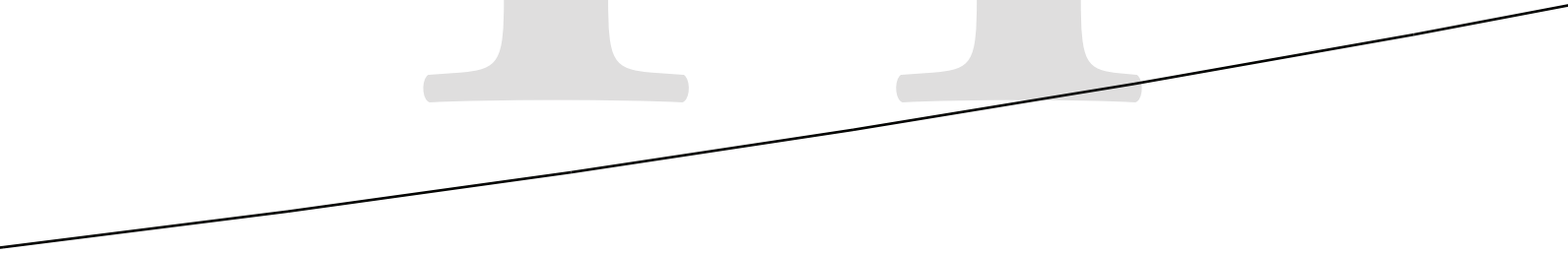
For Height 150 - 160cm

For Height 161 - 170cm

For Height 171cm+

For Height 171cm+ (Extra Long)

14



15

T

16

ROSSI & FREDY

SIZE 16
CENTRE
FRONT MAIN #2

Deep Square Neckline

Details:

**Connect Pattern Piece to
CFront #1 at notches below.**

**Once connected:
Refer to CENTRE FRONT #1
for cutting instructions
Seam Allowance included:
1cm (3/8")**

Fold Line / Grain line

17

ROSSI & FREDY

18



NECKLINE LINE KEY:

Low Square Back:

High Square Back:

ROSSI & FREDY

SIZE 16

CENTRE

BACK MAIN #2

To Match:

Standard Square +

V Neck Front

Details:

Connect Pattern Piece to

←
Fold I

ROSSI & FREDY

SIZE 16

CENTRE BACK MAIN #2

Low Square back

To Match:

Deep Square Front

Details:

Connect Pattern Piece to

CBack #1 at notches below.

Once connected:

Refer to CENTRE BACK #1

for cutting instructions

Seam Allowance included:

1cm (3/8")

Fold Line / Grain line

↳ TO MATCH DEEP SQUARE BACK BACK BODICE OPTION

SIZE 16

CENTRE FRONT MAIN #1

Details:

Connect Pattern Piece to CF #2
at notches at top of pattern piece

Once connected:

Cut x1 on FOLD

Seam Allowance included: 1cm (3/8")

← Optional Leg
Split notch

SIZE 16

**CENTRE BACK
MAIN #1**

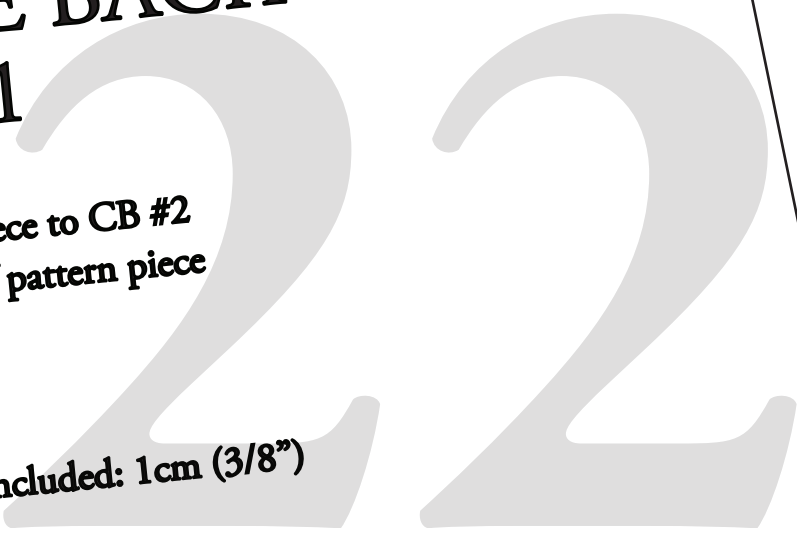
Details:

Connect Pattern Piece to CB #2
at notches at top of pattern piece

Once connected:

Cut x1 on FOLD

Seam Allowance included: 1cm (3/8")



Grain line / Grain line

Connect Pattern Piece to
CBack #1 at notches below.

Once connected:

Refer to CENTRE BACK #1
for cutting instructions

Seam Allowance included:
1cm (3/8")

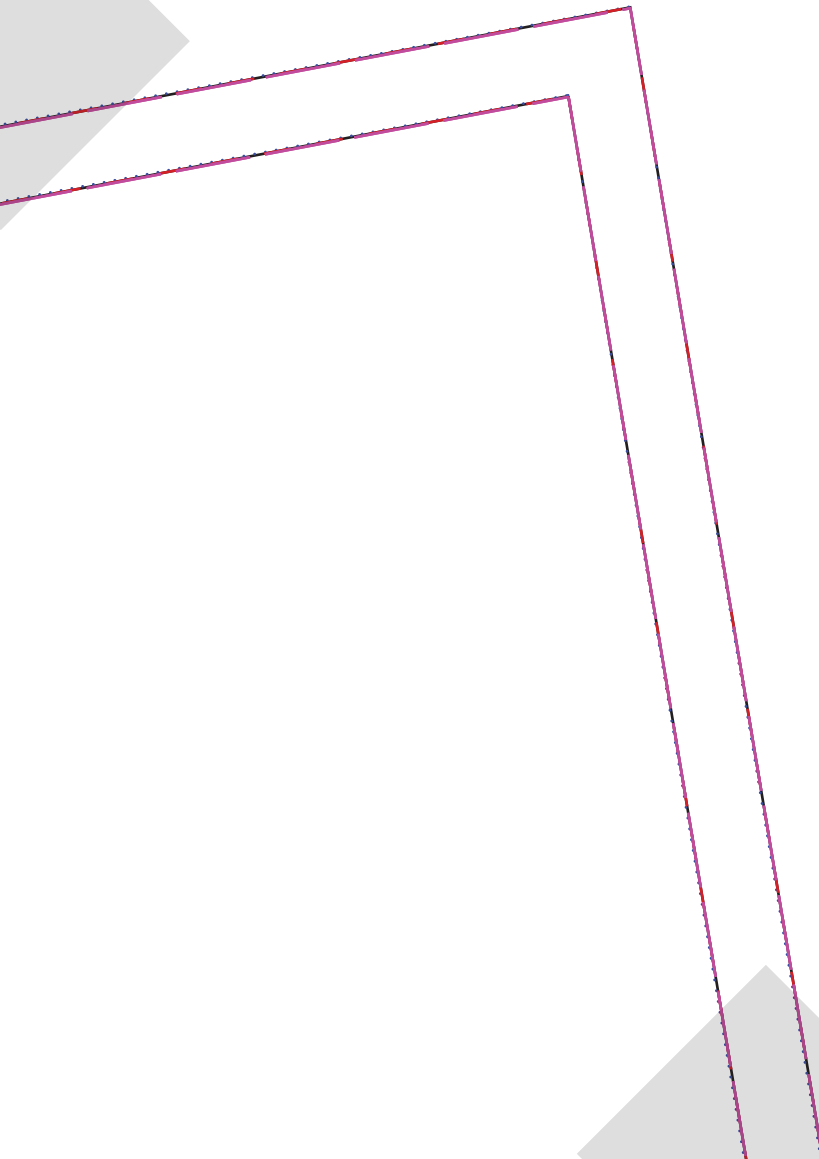
^ TO MATCH STANDARD SQUARE & V NECK FRONT BACK BODICE OPTIONS

Details:
Cut x1 Pair (x2 pieces in total)
Seam Allowance included:
1cm (3/8")

Grain line

NECKLINE LINE KEY:
For Boat Neck Front: Low Square Neck
For V Neck + Standard Square Front: Low Square Neck
For V Neck + Standard Square Front: High Square Neck
For Deep Square Front: Low Square Neck

24



25

Fold Line / Grain line



Fold Line / Grain line

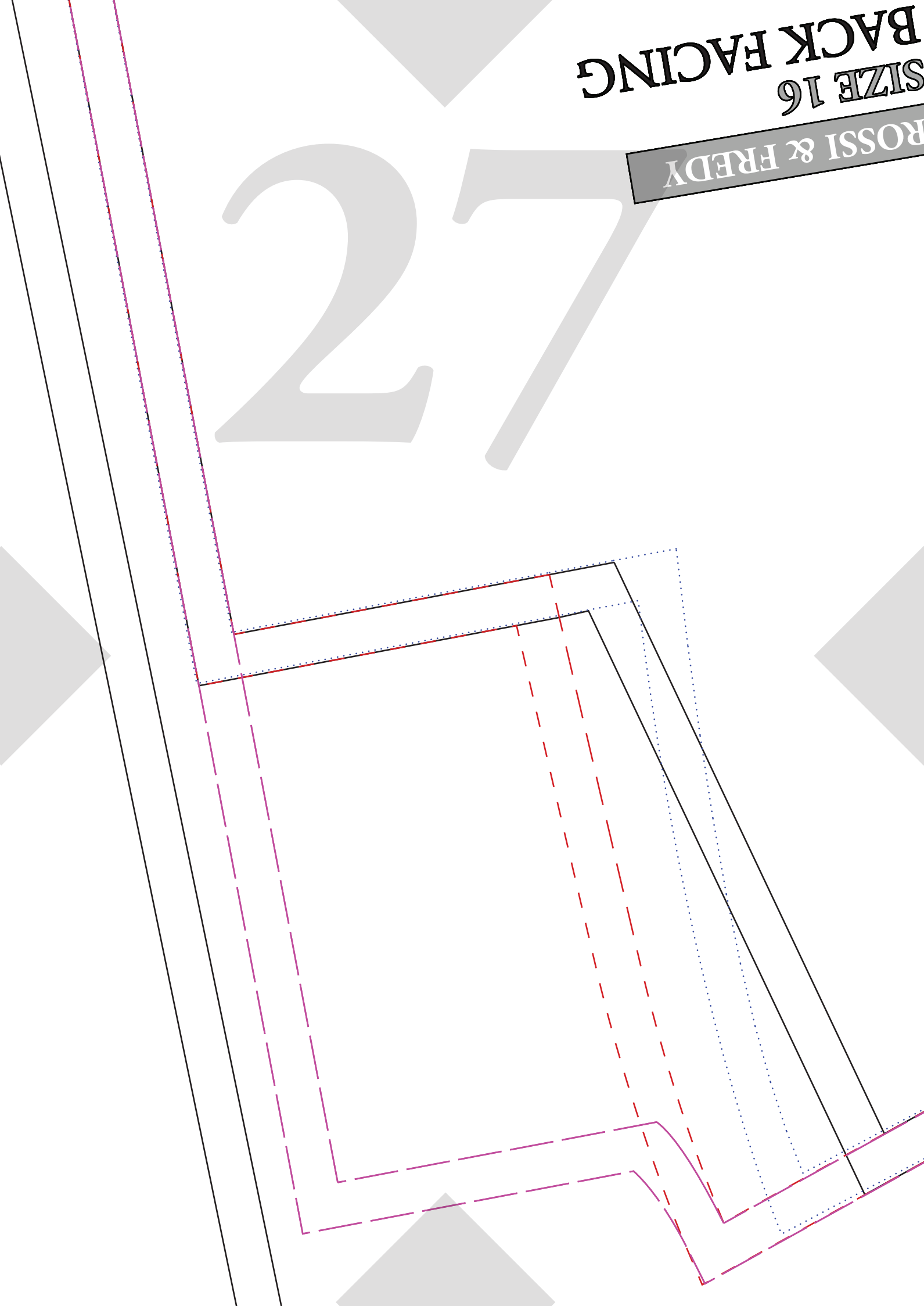


26

BACK FACING
SIZE 16

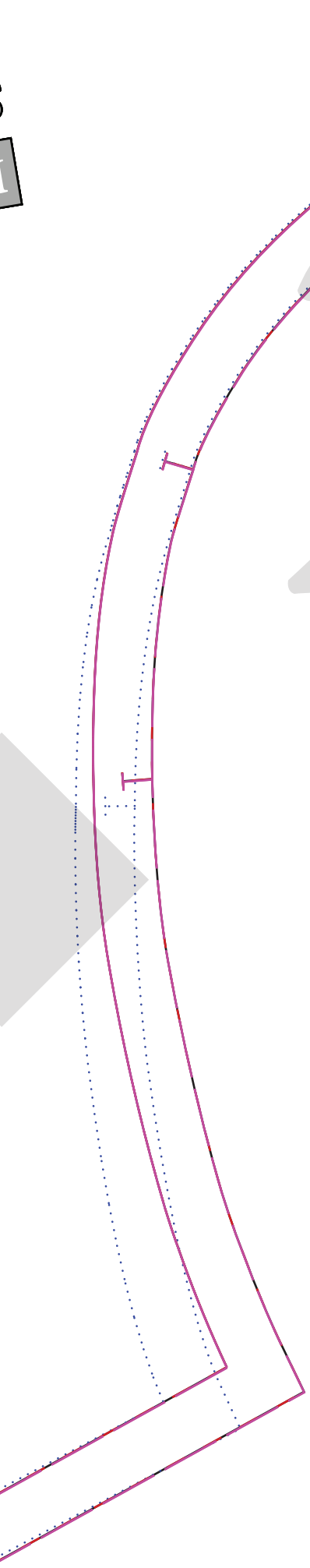
ROSSI & FREDY

27



28

∇ TO MATCH BOAT NECK FRONT BACK BODICE OPTION



Connect Pattern Piece to
CBack #1 at notches below.

Once connected:
Refer to CENTRE BACK #1
for cutting instructions
Seam Allowance included:
1cm (3/8")

Line / Grain line

A diagram showing the connection of the pattern piece to the center back piece. It features a vertical line on the left and a horizontal line on the top, with a 'T' symbol at the intersection. An arrow on the right points to the vertical line, labeled 'Line / Grain line'. The text above the diagram provides instructions on how to connect the pieces and the seam allowance.



29

For Height 150

For Height 160

For Height 170

For Height 171cm

30

- 160cm

For Height 150 - 160cm

1 - 170cm

For Height 161 - 170cm

ght 171cm +

For Height 171cm+

+ (Extra Long)

For Height 171cm+ (Extra Long)

31



Fold 1



Details:

Boat Neck Front

To Match:

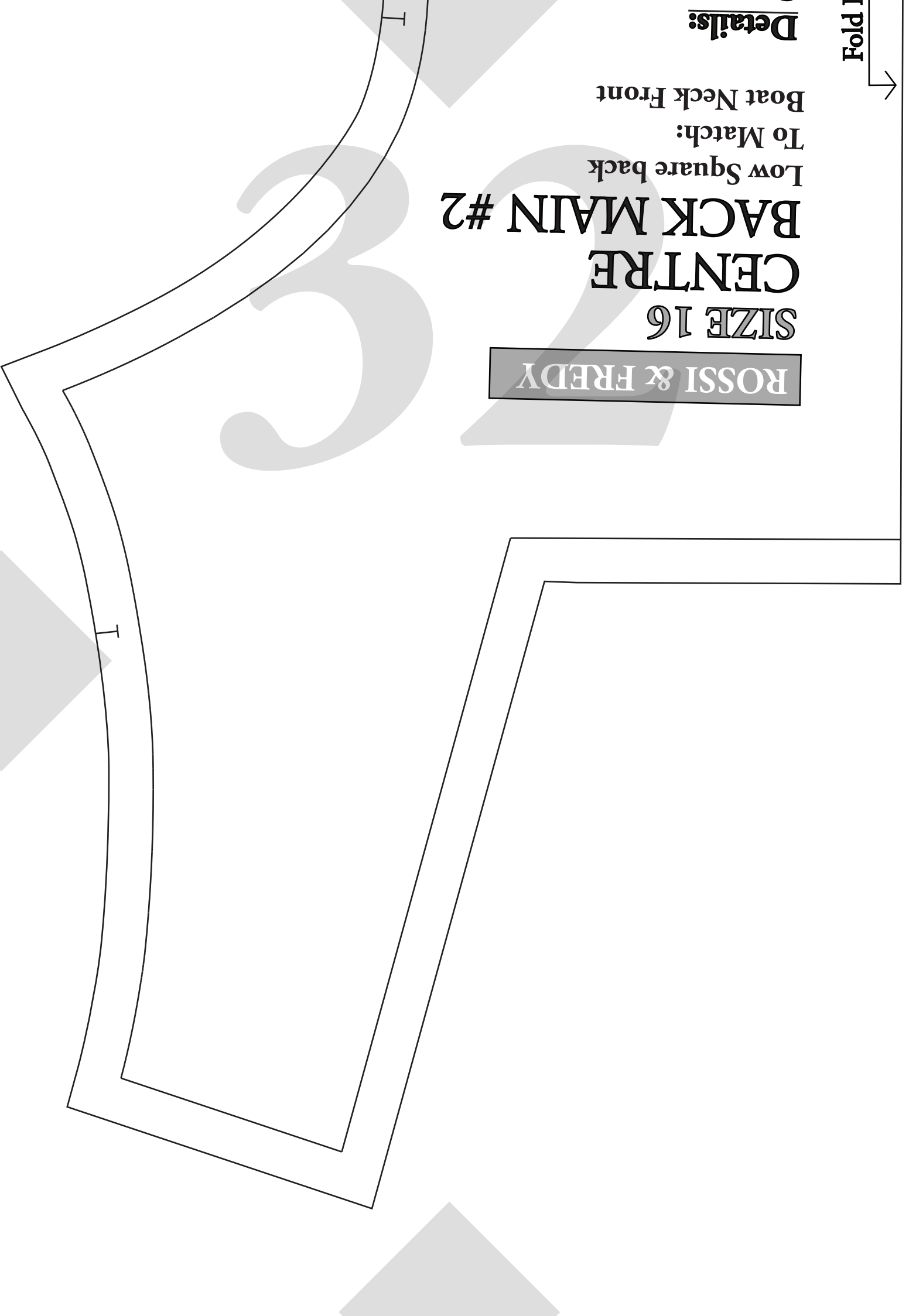
Low Square back

BACK MAIN #2

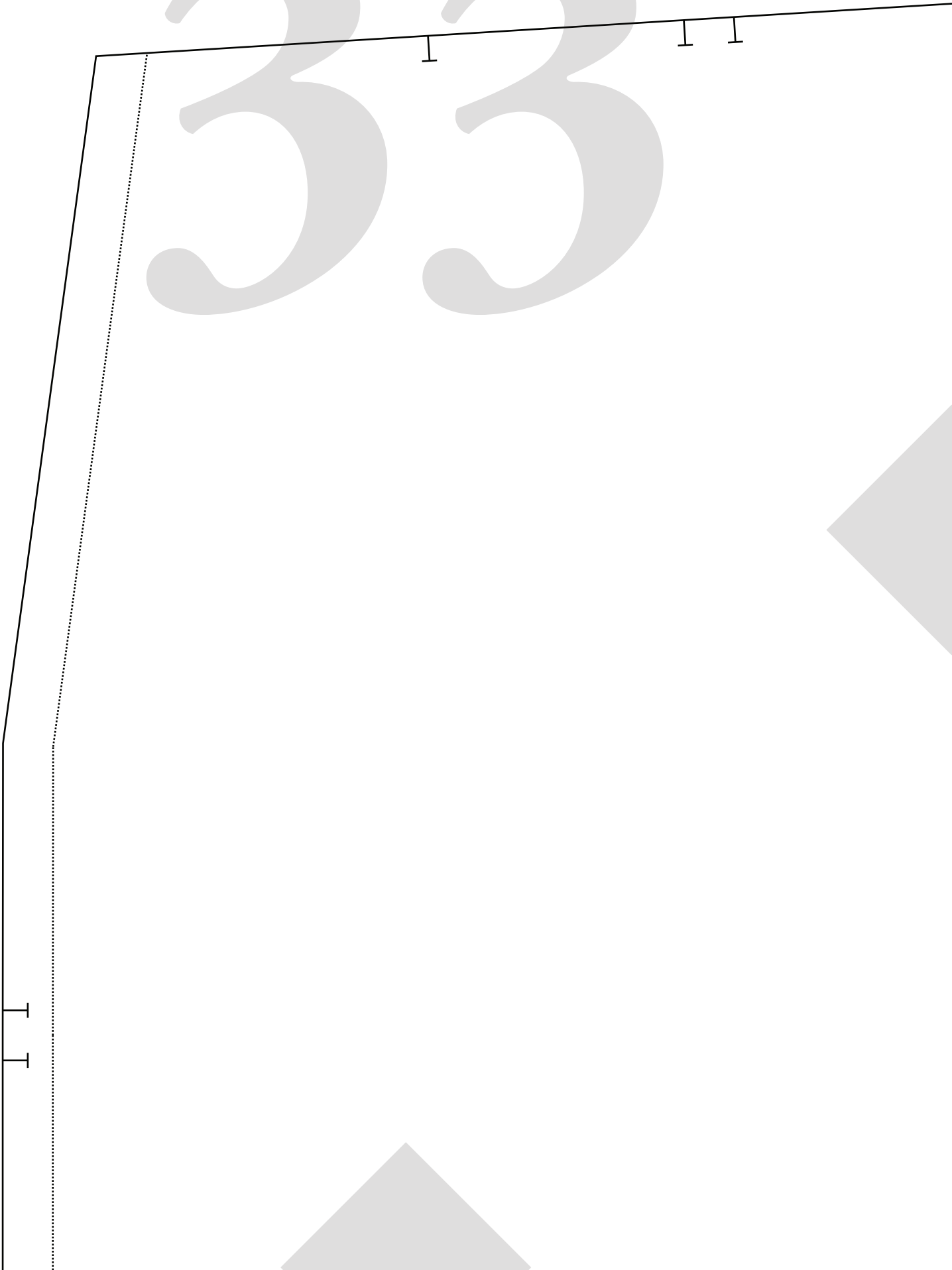
CENTRE

SIZE 16

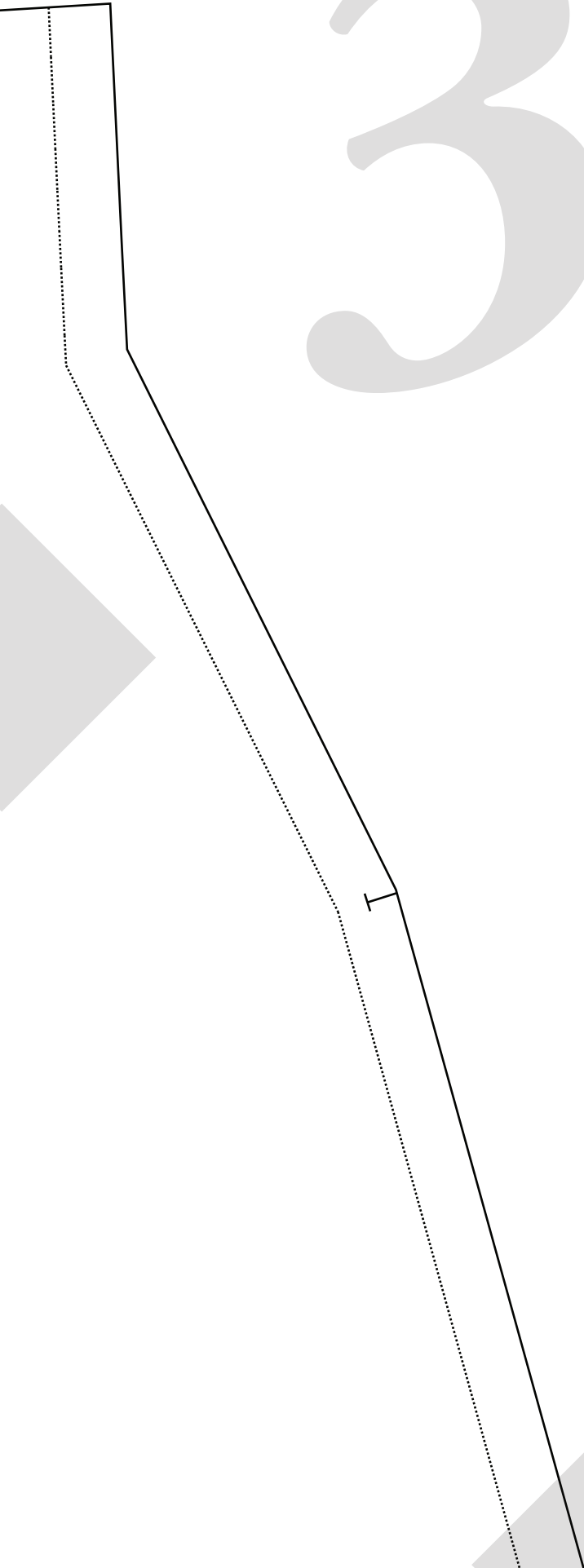
ROSSI & FREDY



33



34



RC

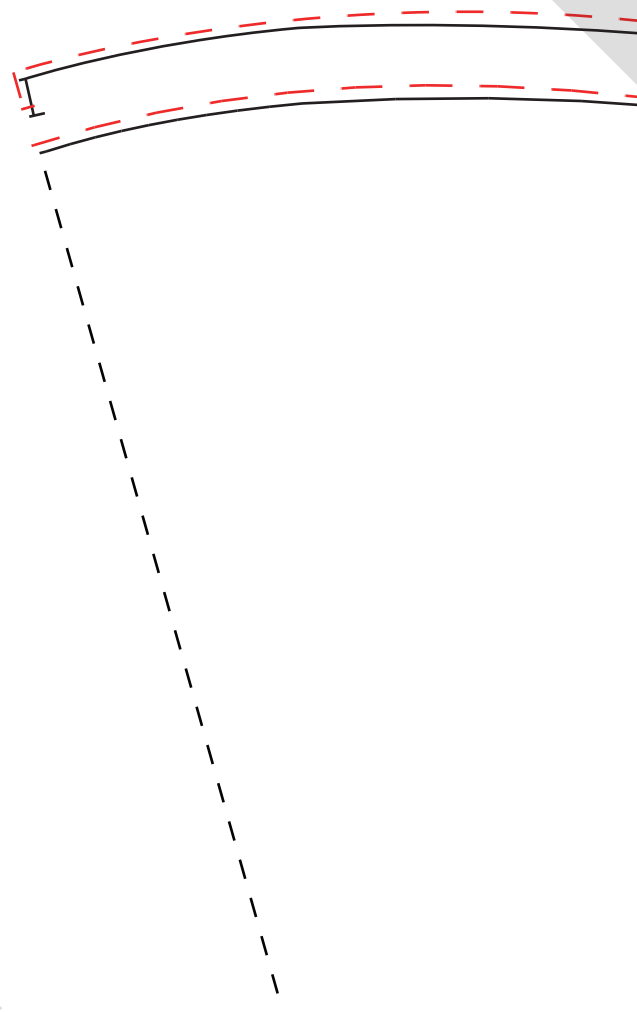
SIZE

SHO

SLE

Gr

Fold Line



DOSSEI & FREDY

E 16

SHORT PUFF
SLEEVE CUFF

Main Line 

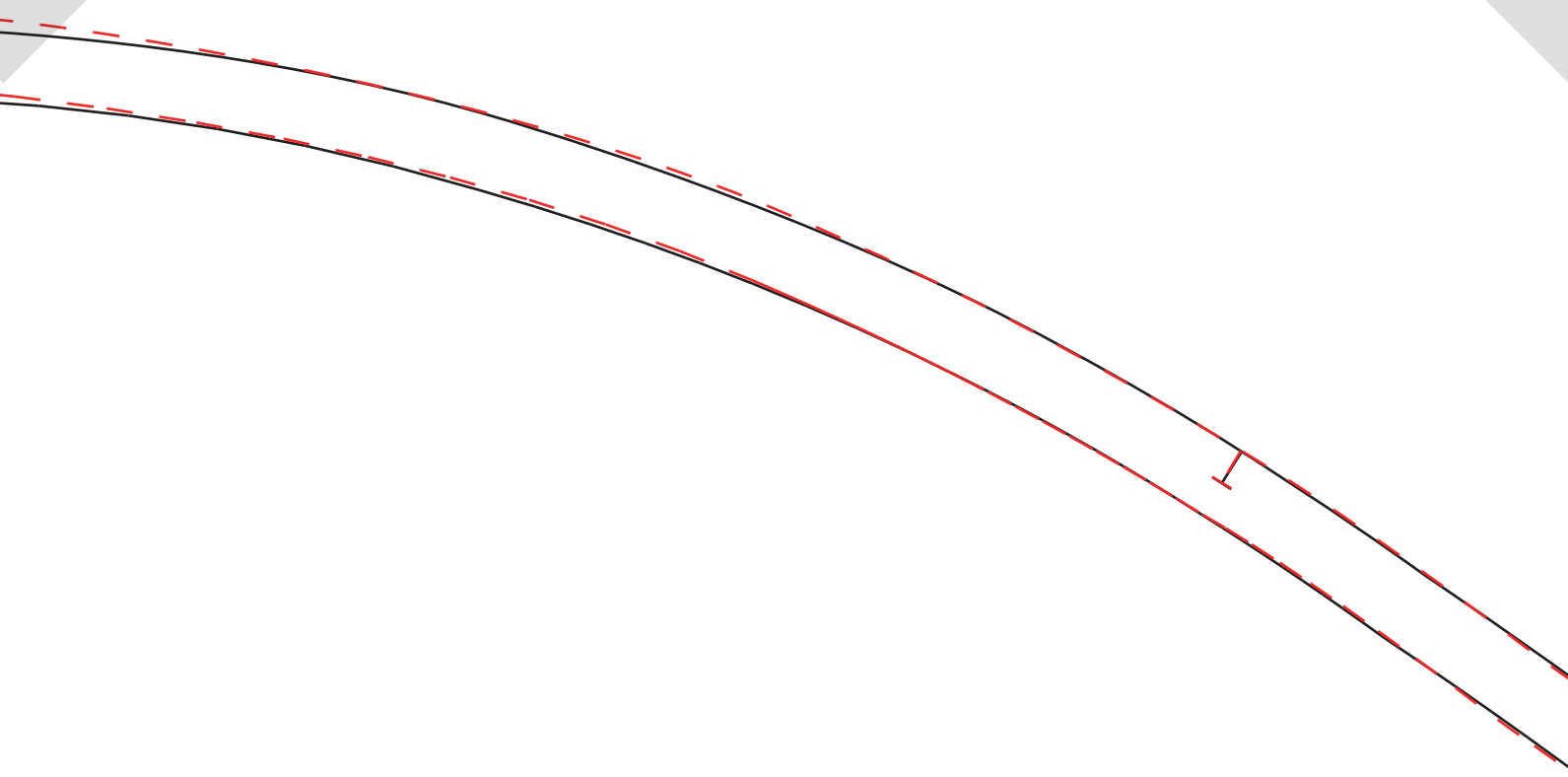
Details:

Cut x2 on Fold

(Measure upper arm to compare

See beginning of sewing instructions)

Seam Allowance included: 1cm (3/8")



ROSSI & FREDY

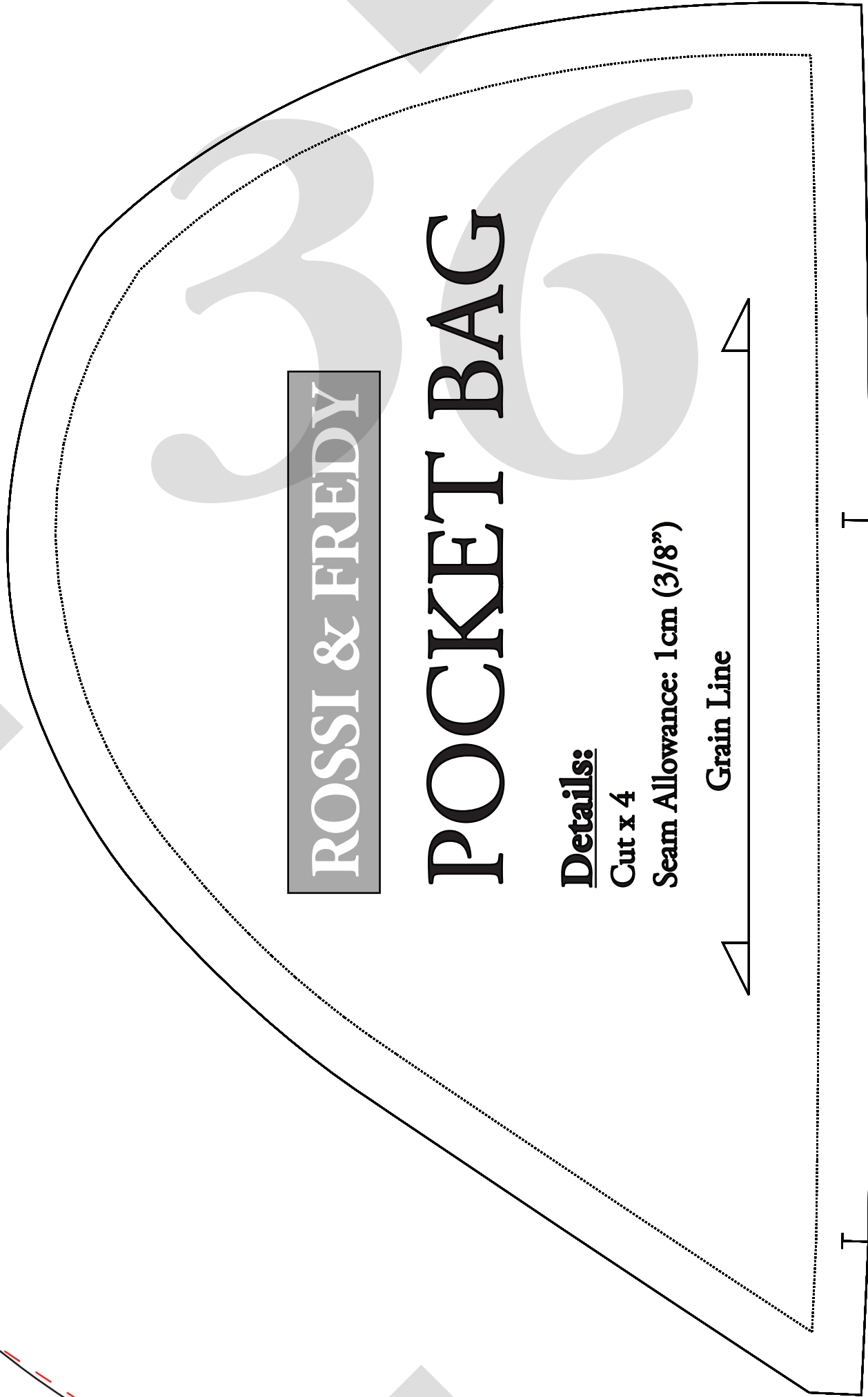
POCKET BAG

Details:

Cut x 4

Seam Allowance: 1cm (3/8")

Grain Line



ROSSI & FREDY

SIZE 16

SIDE BACK #1

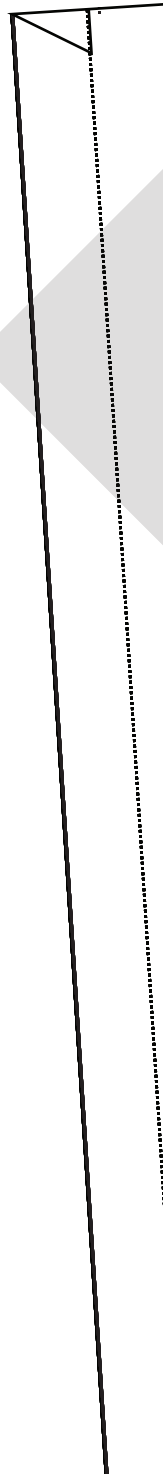
Details:

**Connect Pattern Piece to #2
at notches at top of pattern piece**

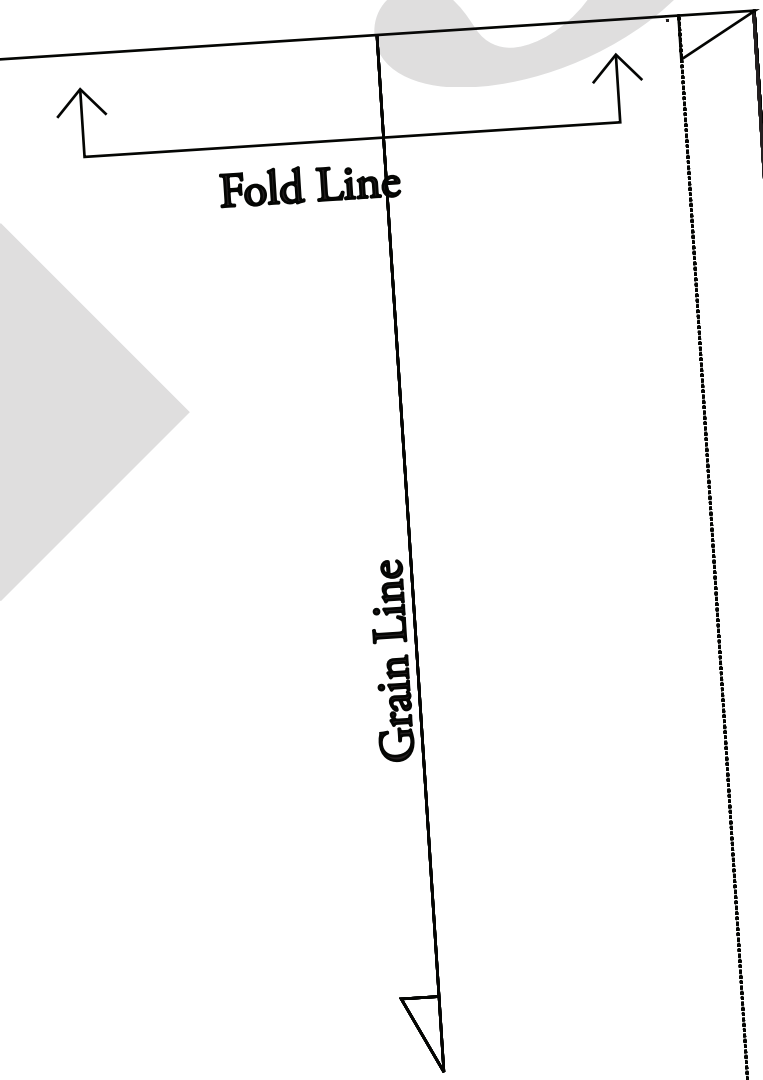
Once connected:

Cut x 1 Pair (2 pieces all up)

Seam Allowance included: 1cm (3/8")



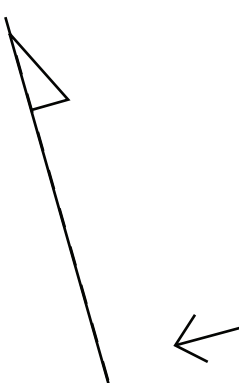
38



REDY

WHIE

cm (3/8")



Grain Line / Fold Line

ROSSI & FREDY

SIZE 16

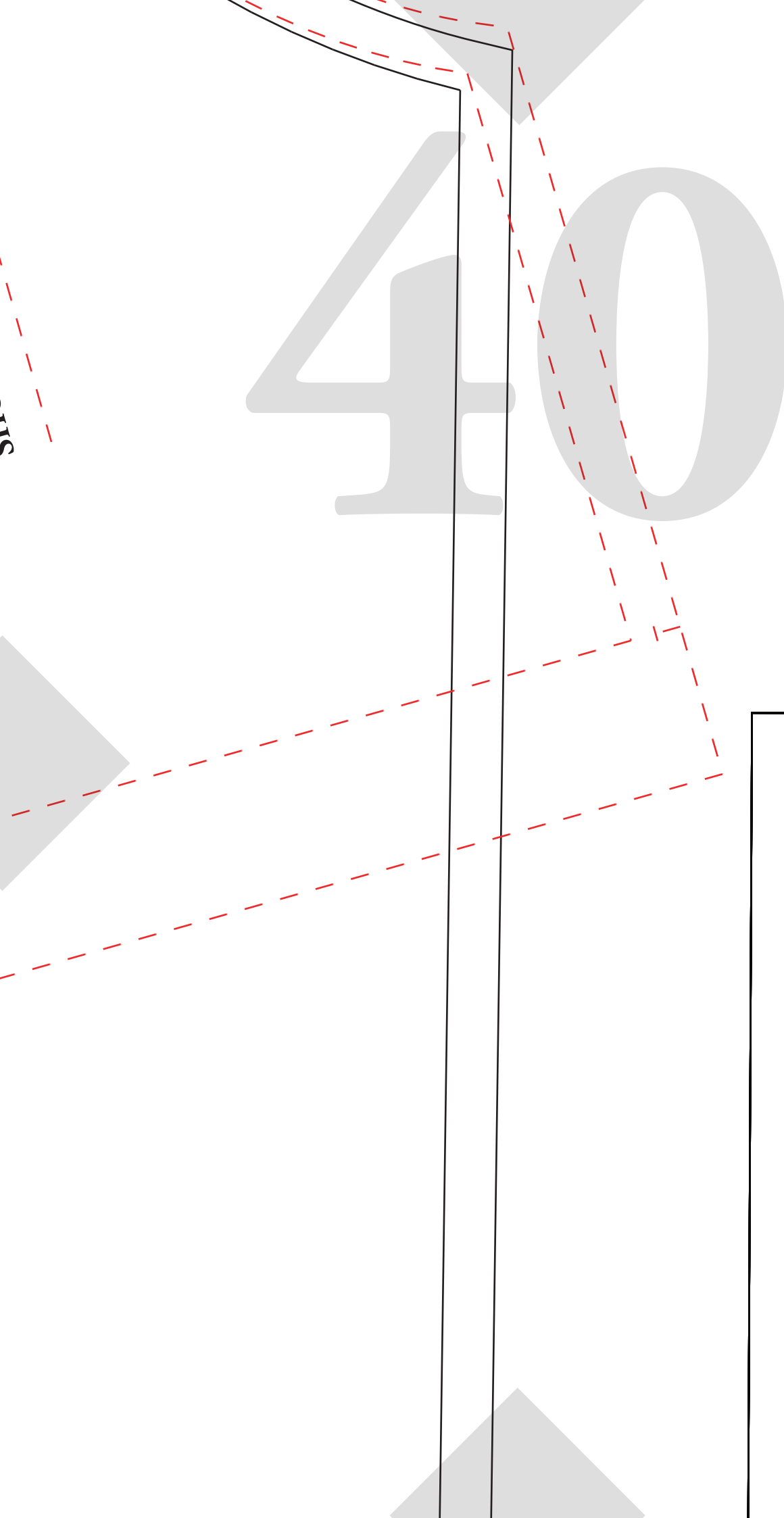
SHORT PUFF SLEEVE

Details:
Cut x 2 on fold

Seam Allowance included: 1 cm (3/8")

LINE KEY

SHORT PUFF SLEEVE:



Details:

Cut x 2

Seam Allowance: 1 cm (3/8")



41

Grain Line



ROSSI & FREDY

HEAD SCARF

Details:

Cut x 1 on fold. Include scrunchie section

Seam Allowance included: 1 cm (3/8")

ROSSI & FR

SCRUNCH

Details:

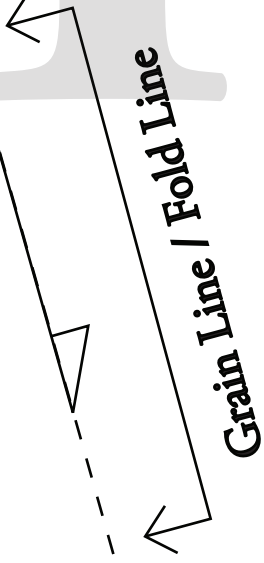
Cut x 1 on fold

Seam Allowance included: 1

ROSSI & FREDY

SIZE 16

**LONG SHIRRED
LONG SLEEVE**



Details:
Cut x 2 on fold
Seam Allowance included: 1cm (3/8")

LINE KEY

LONG SHIRRED:

ROSSI & FREDY

BACK NECK TIE



45

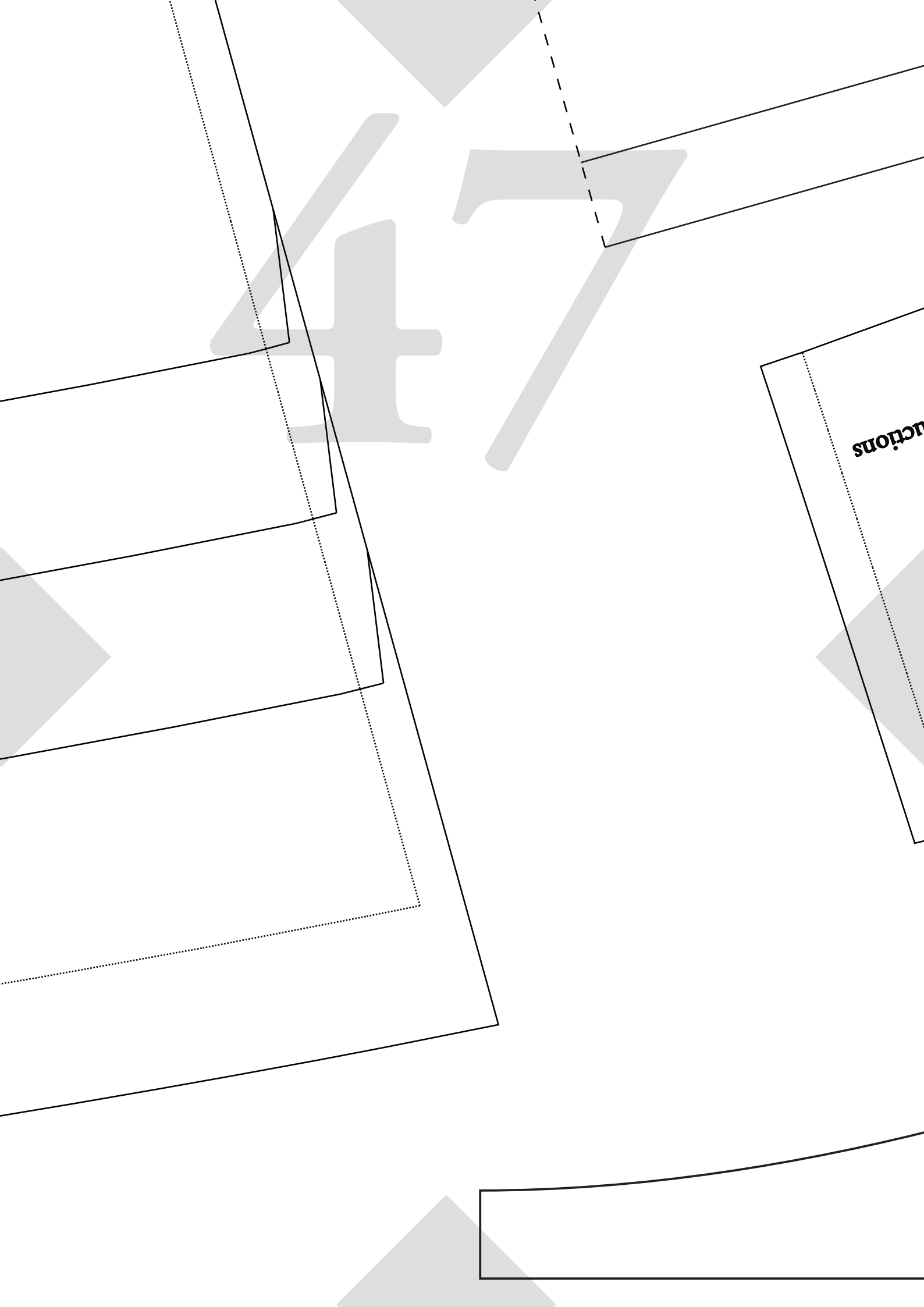
For Height 150 - 160cm

For Height 161 - 170cm

For Height 171cm+

For Height 171cm+ (Extra Long)

Hi from Scrunchie & Head scarf! Pinch and create a snip to then cut me out. Leaving a hole shaped me so that the side front can stay intact, and you can use me too if needed.



solutions

Seam Allowance included: 1cm (3/8")
Refer to SIDE BACK #1 for cutting instructions
Once connected:
Connect Pattern Piece to Back #1
at notches below:

SIDE BACK #2
SIZE 16

Grain Line

ROSSI & FREDY

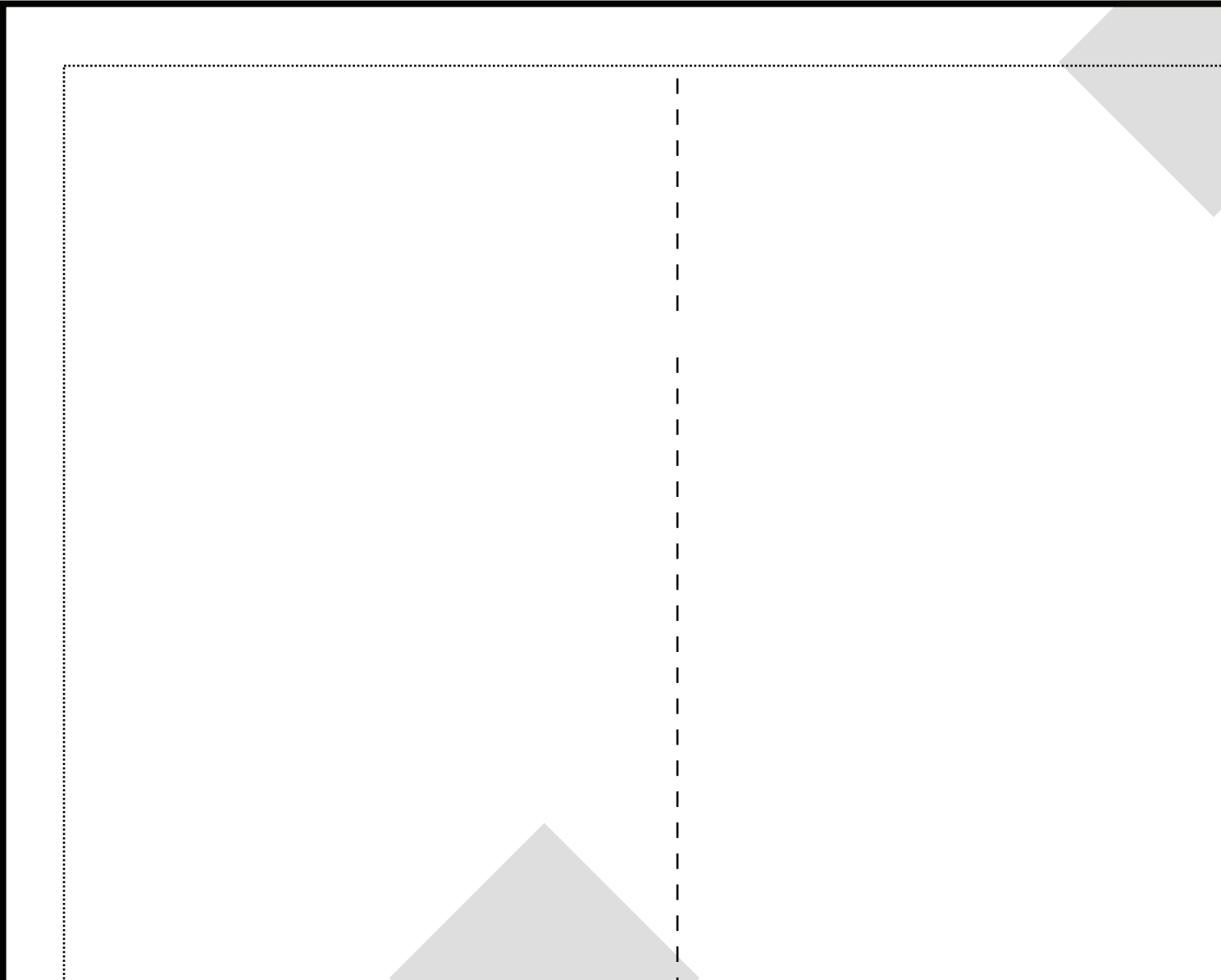
Thin / Standard Waist
Wrap Add on
SIZE 16 - 30
Grain Line

Details:

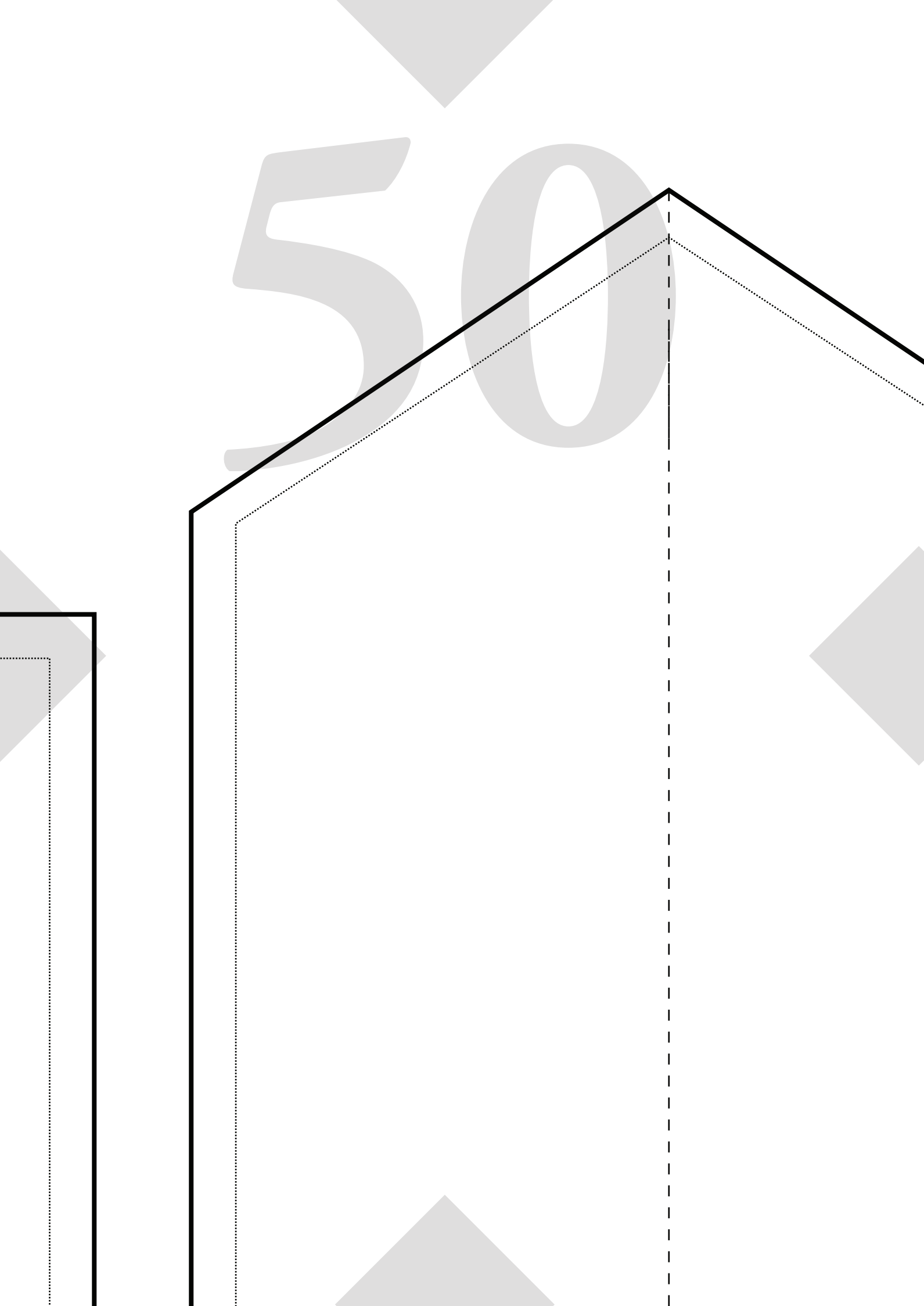
Cut x 2 Pairs (all up x4 pieces)
Seam Allowance Included: 1cm (3/8")



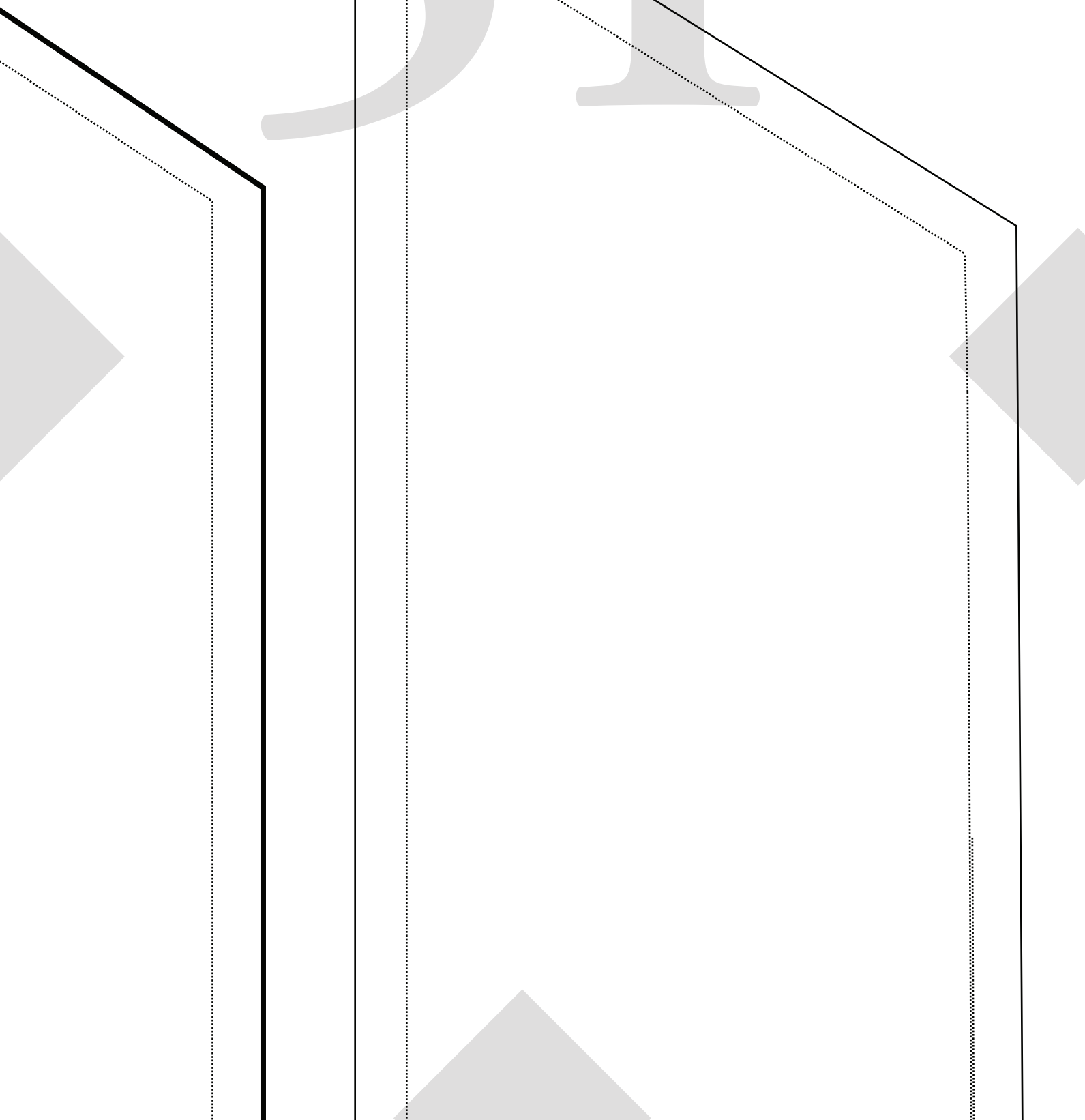
49



550



51



ROSSI & FREDY

SIZE 16-30

TWO TONE WAIST WRAP #1

Details:

Connect Pattern Piece to #2

Once Connected :

Cut x 2 in Primary Colour (one pair)

Cut x 2 in Secondary Colour (one pair)

Seam Allowance included: 1cm (3/8")



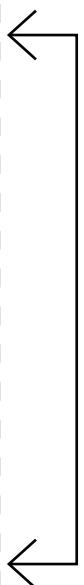
Grain Line / Fold Line



53



Grain Line / Fold Line



54



55

Grain Line



56

ROSSI & FREDY

SIZE 16 – 30

THIN WAIST WRAP #1

Details:

Connect Pattern Piece to #2

Once connected:

Cut x 2

Seam Allowance included: 1cm (3/8")

Join Connecting Piece Here



ROSSI & FREDY

SIZE 16 – 30

THIN WAIST WRAP #2

Details:

Connect Pattern Piece to #1

See Wrap #1 once connected for cutting instructions

Seam Allowance included: 1cm (3/8")

Join Connecting Piece Here



ROSSI & FREDY

SIZE 16 - 30

**TWO TONE
WAIST WRAP
#2**

Details:

**Connect Pattern Piece to #1
See Wrap #1 once connected
for cutting instructions
Seam Allowance included: 1cm (3/8")**

Join Connecting Piece Here

60

