

A4 PRINTING INSTRUCTIONS

Before you get started on creating your Rossi of Fredy Wrap, make sure to read the below notes so that you can make sure your printer is calibrated and prints the patterns to the correct size.

Before you begin, please make sure you are printing on A4 paper with an A4 printer, not letter paper as the small difference in the paper size can mean your patterns don't print correct. A4 measures 210 x 297mm

1. Select Layers / styles:

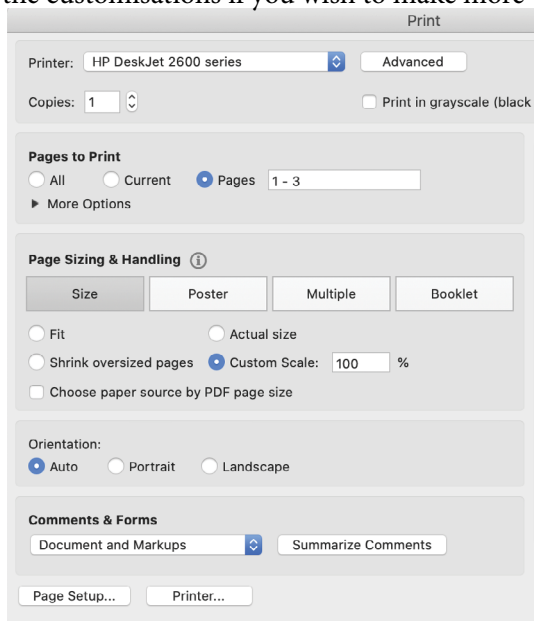
Make sure you have gone through the PDF and selected all necessary layers + Customisations that you need for your Rossi / Fredy Wrap in instructions. You can print out all the customisations if you wish to make more variations in future.

2. Print the first three pages as a test print:

We strongly suggest printing the first three pages as a test to make sure everything is set up correctly, to save time, paper and the environment.

When printing in Adobe Acrobat, do as follows:

- File > Print
- Select your printer
- Click 'Pages' and then type '1 - 3' (for test print)
- Click 'Custom Scale' and type '100%'
- Click 'PRINT'

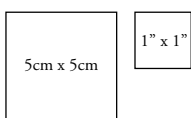


3. Calibrate and measure

When printing, although you would've selected '100%', most common household printers will print with a white border. Don't worry, this won't affect measurements and you **SHOULD NOT** trim the borders. However, to check this is correct for your printer – we have provided two tests of calibration squares.

3a: Single Square Calibration

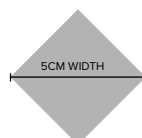
On the first pattern page, you will see a 5x5cm square and a 1"x1" square. Using your ruler, measure these squares to make sure they (along with your patterns) have printed to the correct scale.



Note: These calibration squares are an example only and are not printed to scale.

3b: Across-Page Diamond Calibration

You will then see a grey diamond split across the first two pattern pages (similar to the below example). Simply measure from one corner of the diamond to the other corner. This should measure 5cm from left point to right point.



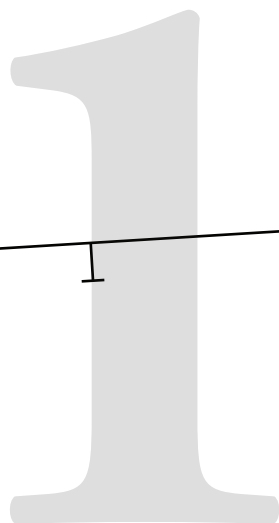
Note: This diamond is an example only and is not printed to scale.

4. You're all set and ready to go!

Once you have successfully tested and printed the first couple of pages, and double-checked the calibration as per steps 3a and 3b, you're all set to go!

5cm x 5cm

1" x 1"



ROSSI & FREDY

SIZE 14

SIDE FRONT #1

Details:

Connect Pattern Piece to #2
at notches at top of pattern piece.

Once connected:

Cut x 1 Pair (2 pieces all up)

Seam Allowance included: 1cm (3/8")

5CM WIDTH

Grain Line

ROSSI & FREDY

SIZE 14

SIDE FRONT #2

Details:

Connect Pattern Piece to front #1
at notches below.

Once connected:

Refer to **SIDE FRONT #1** for cutting
instructions

Seam Allowance included: 1 cm (3/8")



A technical drawing of a pattern piece for a garment. The piece is roughly rectangular with a curved bottom edge and a curved right edge. It features a solid black outline, a dashed purple line, and a dashed green line. A small notch is visible on the left side. The text is centered on the piece.

ROSSI & FREDY

SIZE 14

**CENTRE
FRONT MAIN #2**

Details:

**Connect Pattern Piece to
CFront #1 at notches below.**

**Once connected:
Refer to CENTRE FRONT #1
for cutting instructions
Seam Allowance included: 1cm (3/8")**

NECKLINE LINE KEY:

t h e b o l d o n e

Fredy Wrap + Rossi Wrap – Size 14

© The Bold One Workshop Patterns.
These patterns are copyrighted by
The Bold One Patterns and may not
be copied, shared, or resold.

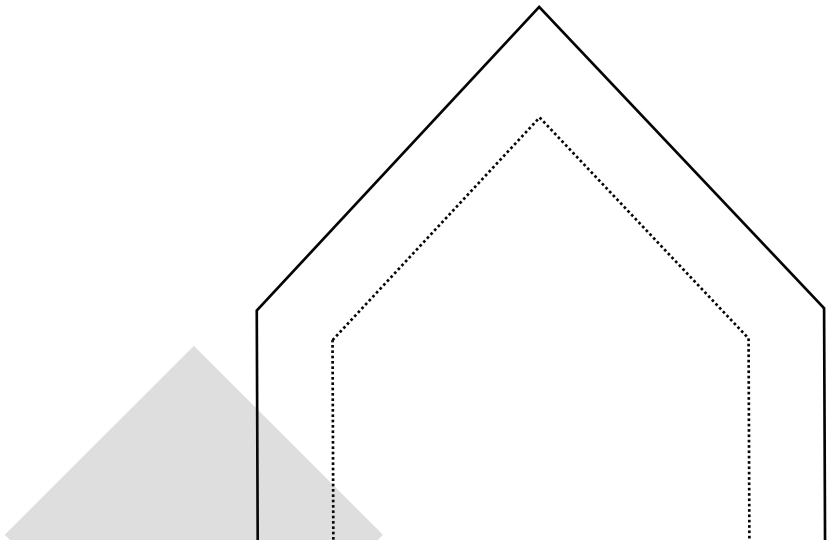
Reproducing this pattern to sell items
commercially is prohibited.

Seam allowance = 1cm (3/8")

Use the following boxes to check
pattern has been printed to correct scale.

5cm x 5cm

1" x 1"



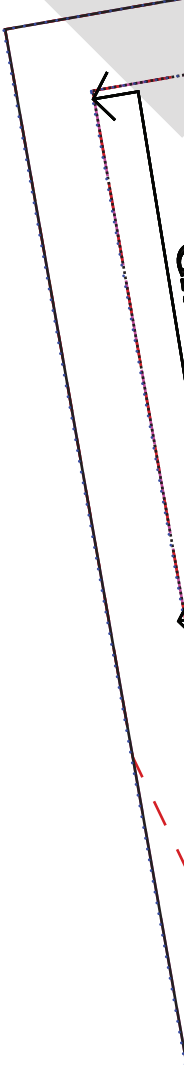
5

Optional Leg
Split notch



T

6



Boat Neck Front:

V Front:

Standard Square Front:

Details:
Cut x1 Pair (x2 pieces in total)
Seam Allowance included:
1cm (3/8")

Deep Square Front:
Standard Square Front:
V Front:

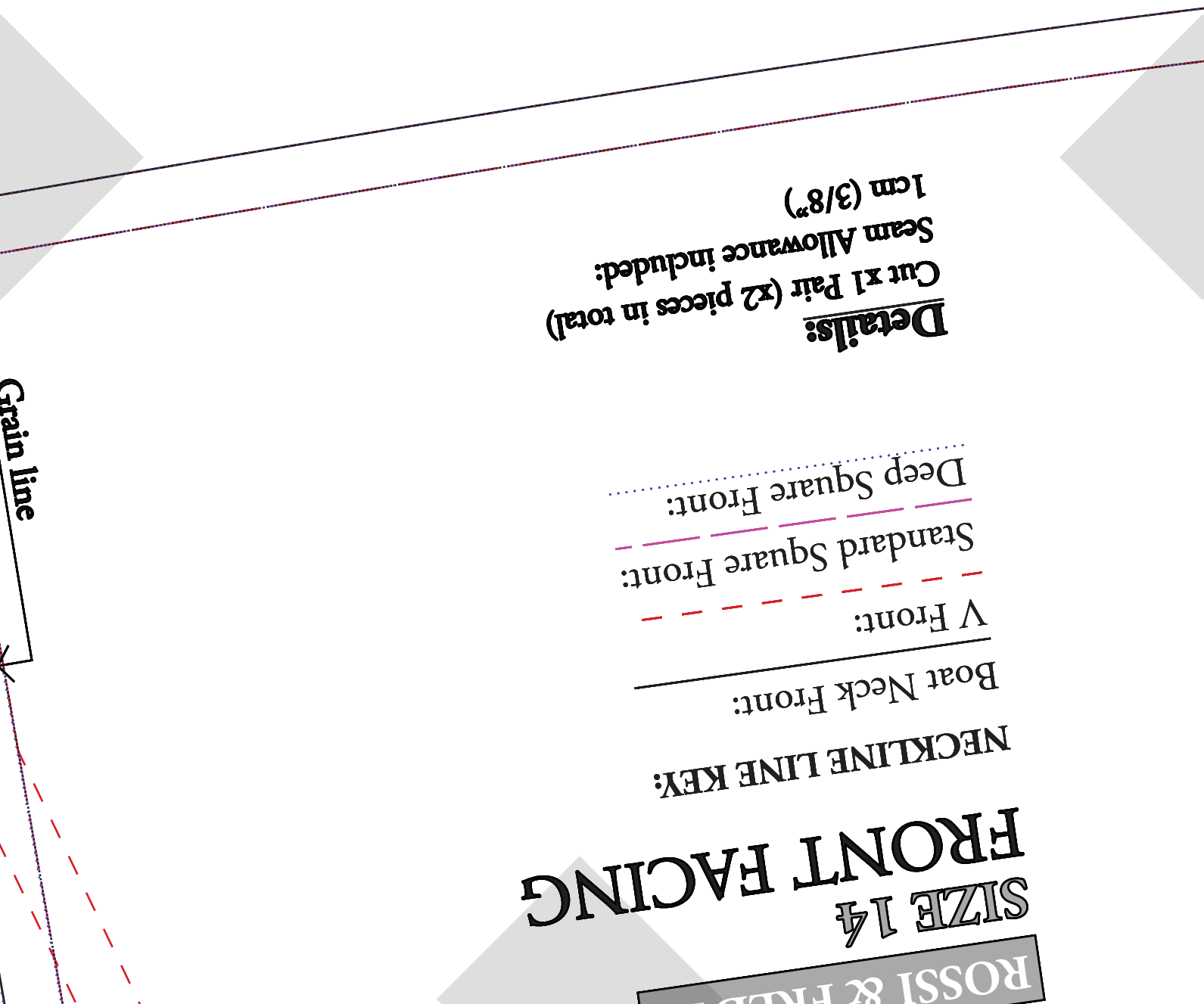
Boat Neck Front:

NECKLINE LINE KEY:

SIZE 1 1/4
FRONT FACING

ROSSI & FRIENDS

Grain line



Fold Line / Grain line



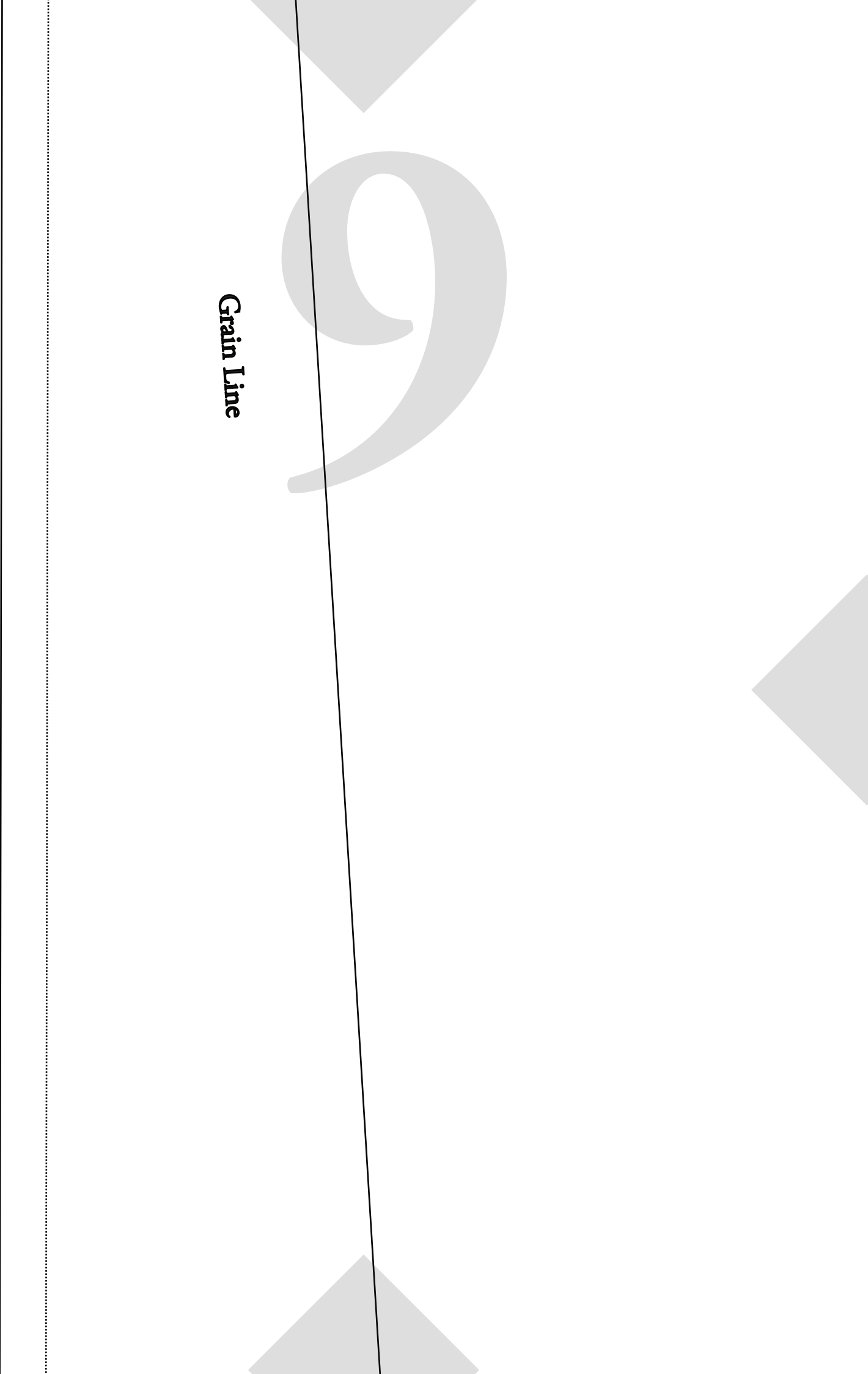
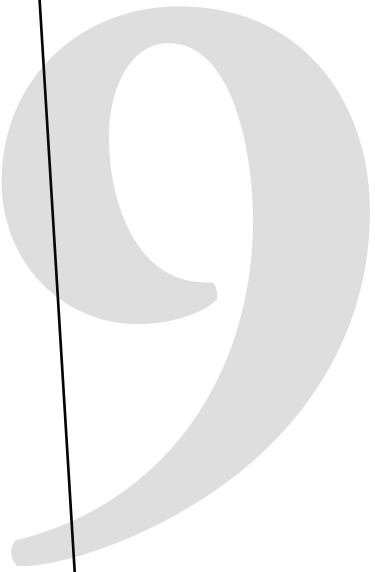
ROSSI WRAP

DEEP SQUARE NECK SHOULDER TIE

Cut x4

Seam Allowance included: 1cm (3/8")

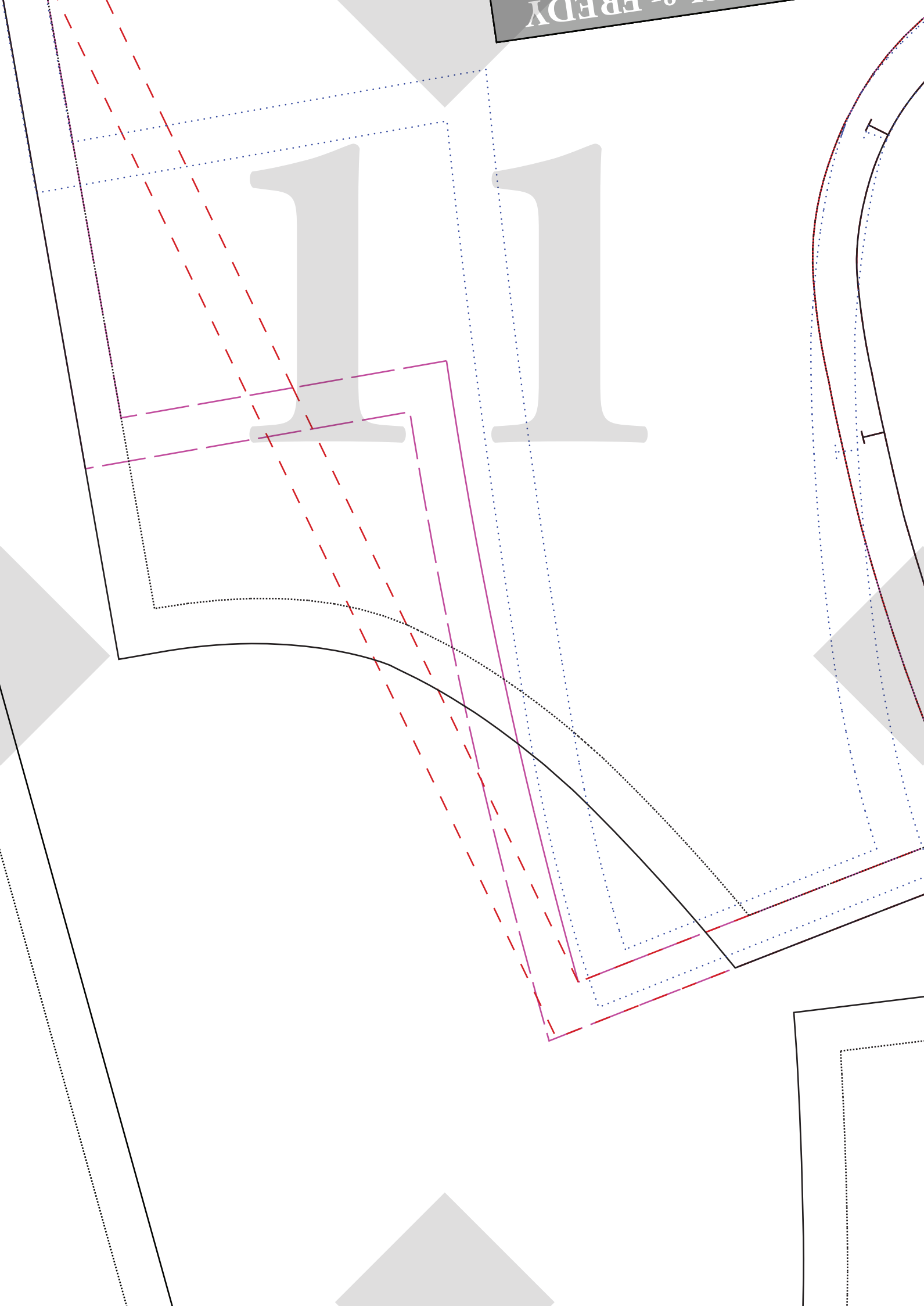
Grain Line



10

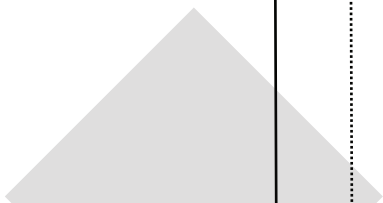
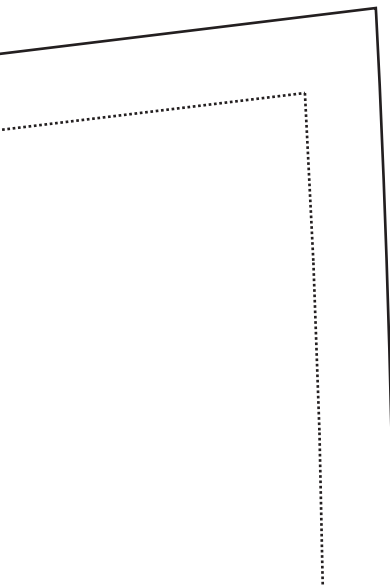
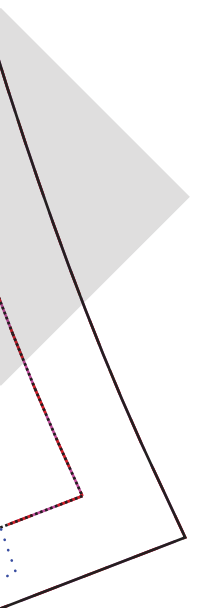
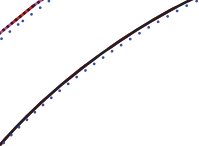


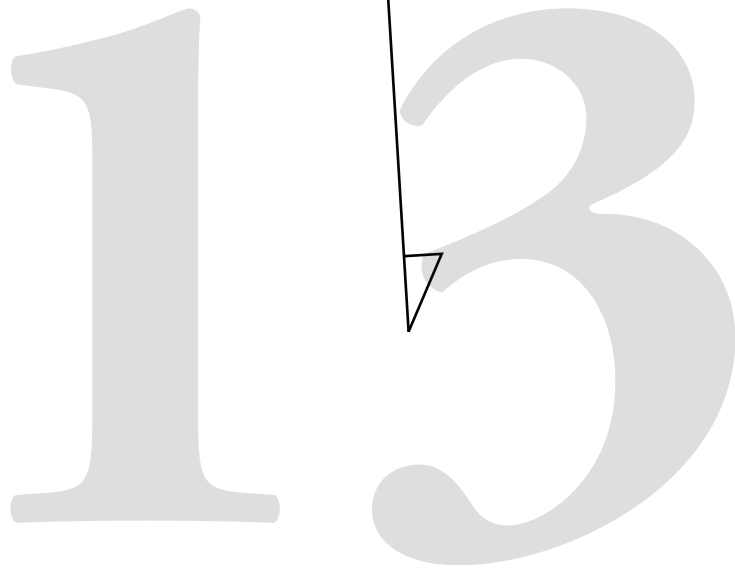
11



12

Grain Line



A large, light gray number '13' is centered at the top of the page. A thin black line extends from the top of the '3' down to a small black triangle pointing towards the right side of the '3'.

For Height 150 - 160cm

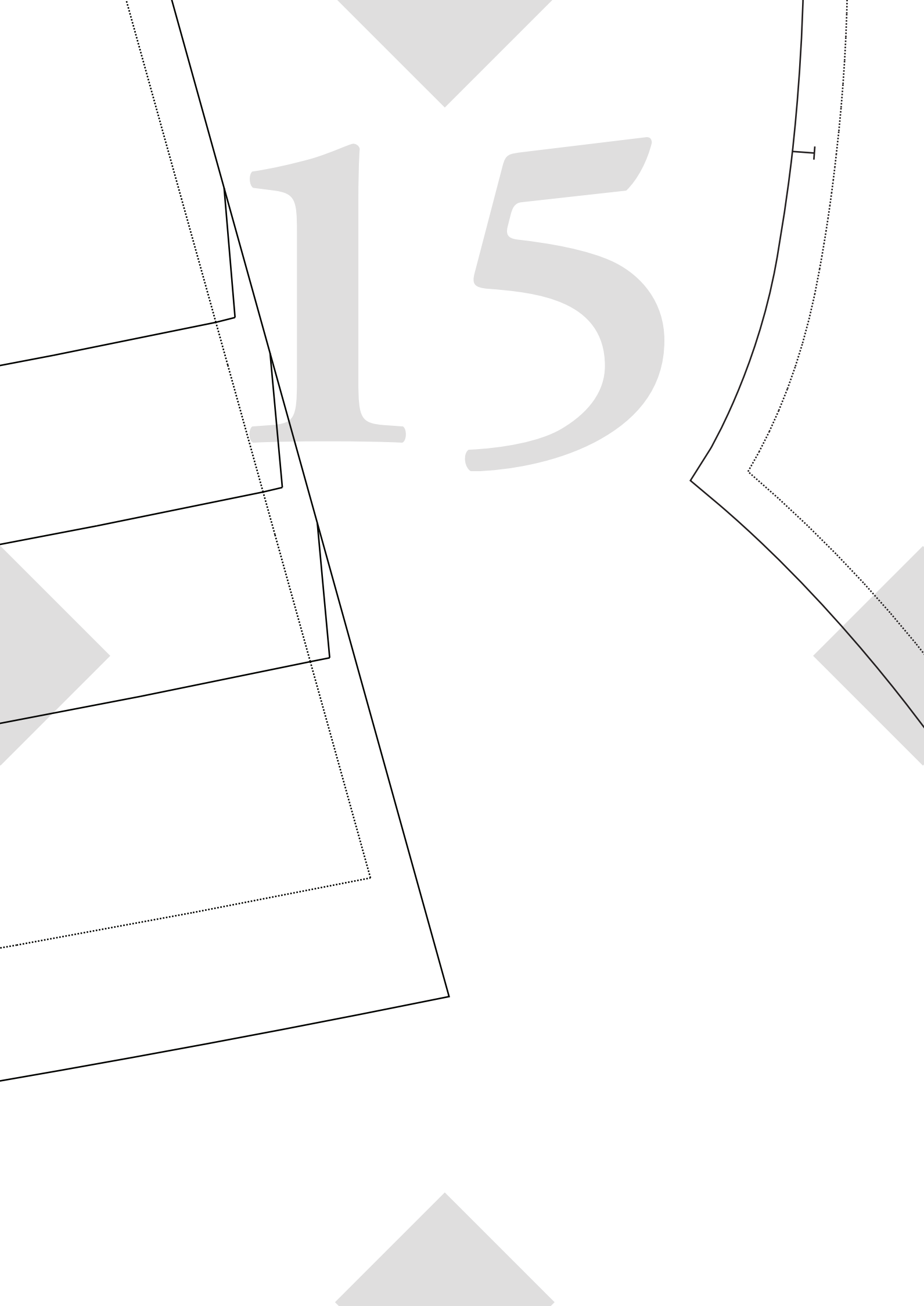
For Height 161 - 170cm

For Height 171cm+

For Height 171cm+ (Extra Long)

14

15



16

ROSSI & FREDY

SIZE 14

**CENTRE
FRONT MAIN #2**

Deep Square Neckline

Details:

**Connect Pattern Piece to
CFront #1 at notches below.**

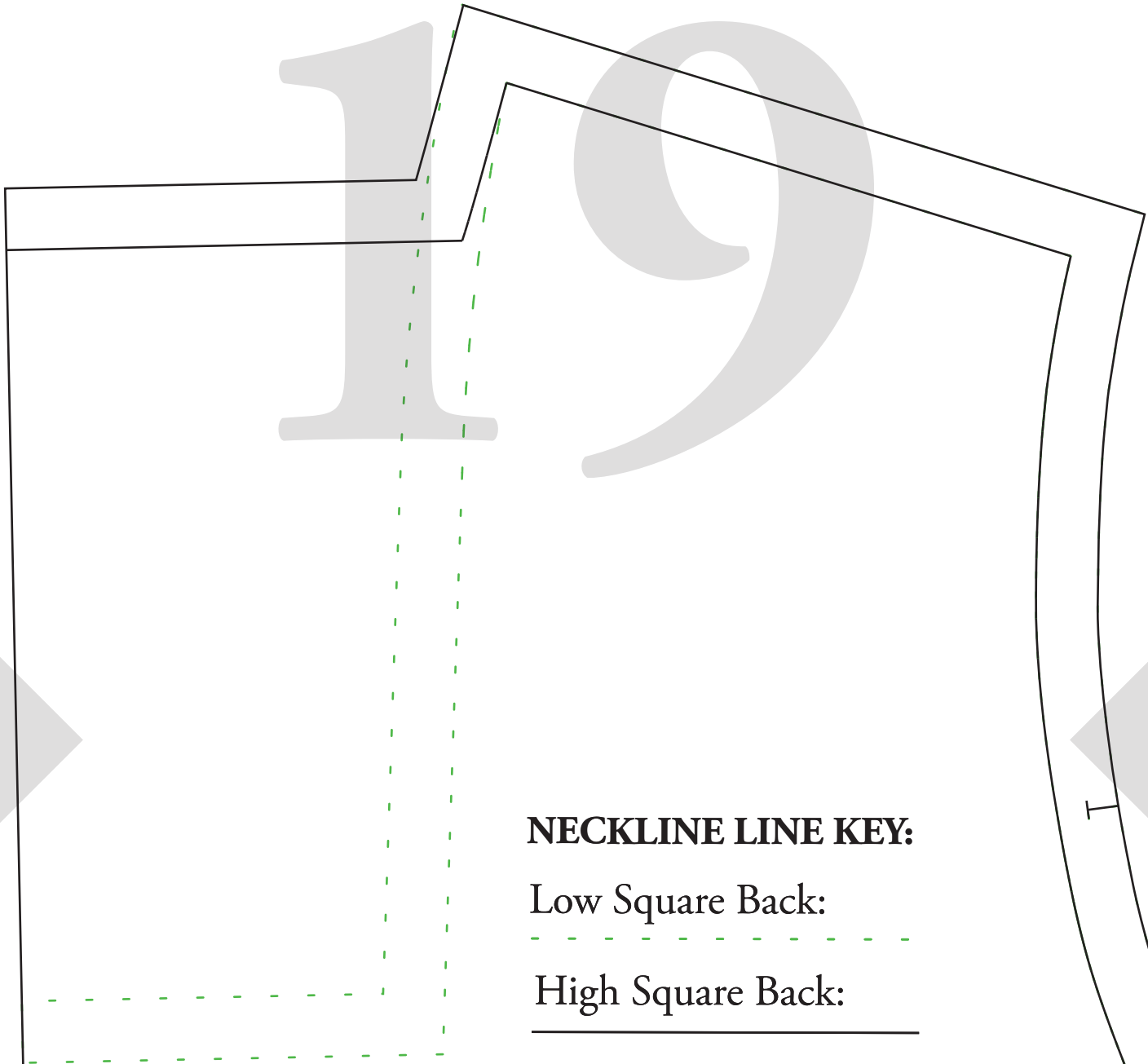
**Once connected:
Refer to CENTRE FRONT #1
for cutting instructions
Seam Allowance included:
1cm (3/8")**

Fold Line / Grain line

17

ROSSI & FREDY

18



NECKLINE LINE KEY:

Low Square Back:

High Square Back:

ROSSI & FREDY

SIZE 14

**CENTRE
BACK MAIN #2**

**To Match:
Standard Square +
V Neck Front**



^TO MATCH DEEP SQUARE BACK BACK BODICE OPTION

Once connected:
Refer to CENTRE BACK #1
for cutting instructions
Seam Allowance included:
1cm (3/8")

Details:
Connect Pattern Piece to
CBack #1 at notches below.

SIZE 1 1/4
CENTRE
BACK MAIN #2
Low Square back
To Match:
Deep Square Front

Fold Line / Grain line

ROSSI & FREDY

SIZE 14

CENTRE FRONT MAIN #1

Details:

Connect Pattern Piece to CF #2
at notches at top of pattern piece

Once connected:

Cut x1 on FOLD

Seam Allowance included: 1cm (3/8")

← Optional Leg
Split notch

SIZE 14

**CENTRE BACK
MAIN #1**

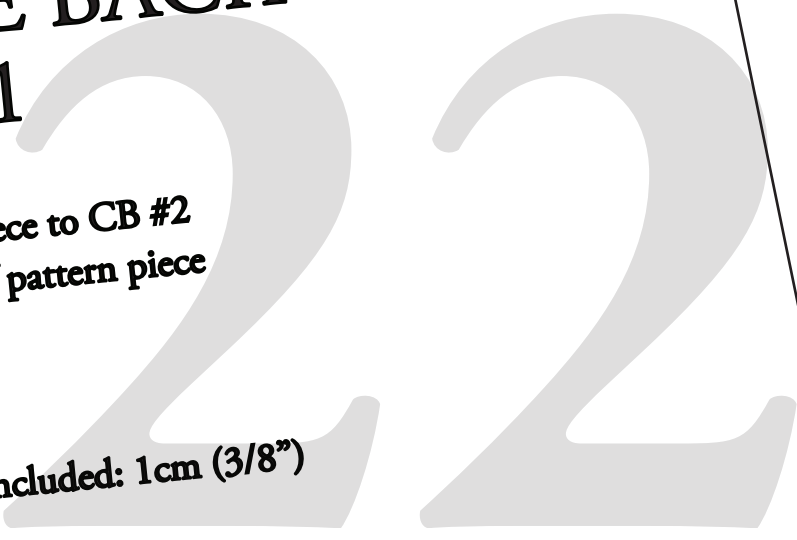
Details:

Connect Pattern Piece to CB #2
at notches at top of pattern piece

Once connected:

Cut x1 on FOLD

Seam Allowance included: 1cm (3/8")



Fold Line / Grain line

Details:

Connect Pattern Piece to
CBack #1 at notches below.

Once connected:
Refer to CENTRE BACK #1
for cutting instructions
Seam Allowance included:
1cm (3/8")

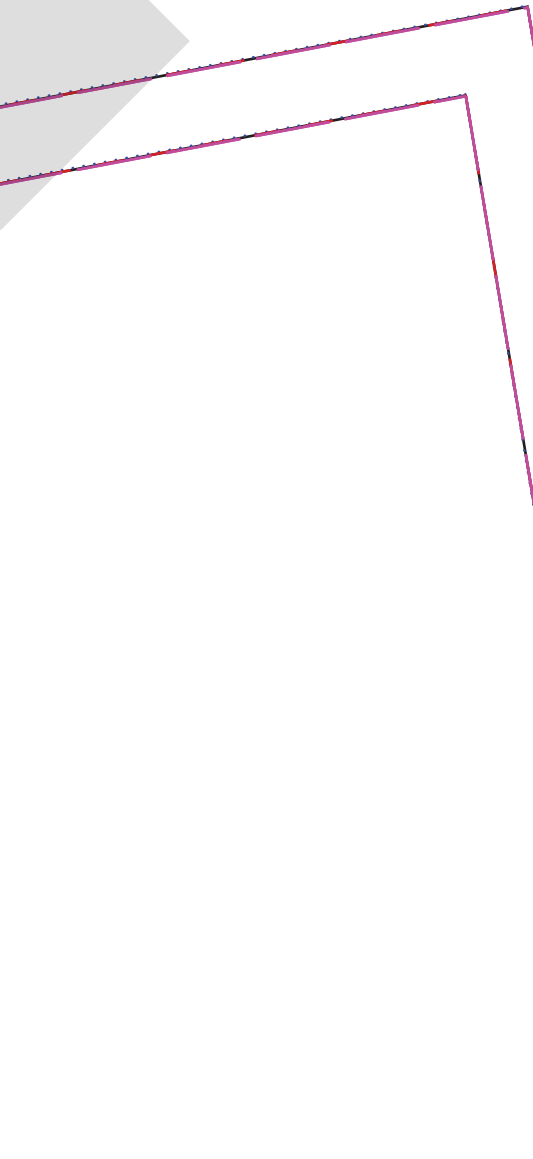
^ ^ TO MATCH STANDARD SQUARE & V NECK FRONT BACK BODICE OPTIONS

Details:
Cut x1 Pair (x2 pieces in total)
Seam Allowance included:
1cm (3/8")

Grain line

NECKLINE LINE KEY:
For Boat Neck Front: Low Square Neck
For V Neck + Standard Square Front: Low Square Neck
For V Neck + Standard Square Front: High Square Neck
For Deep Square Front: Low Square Neck

24

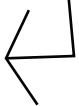


25

Fold Line / Grain line



Fold Line / Grain line

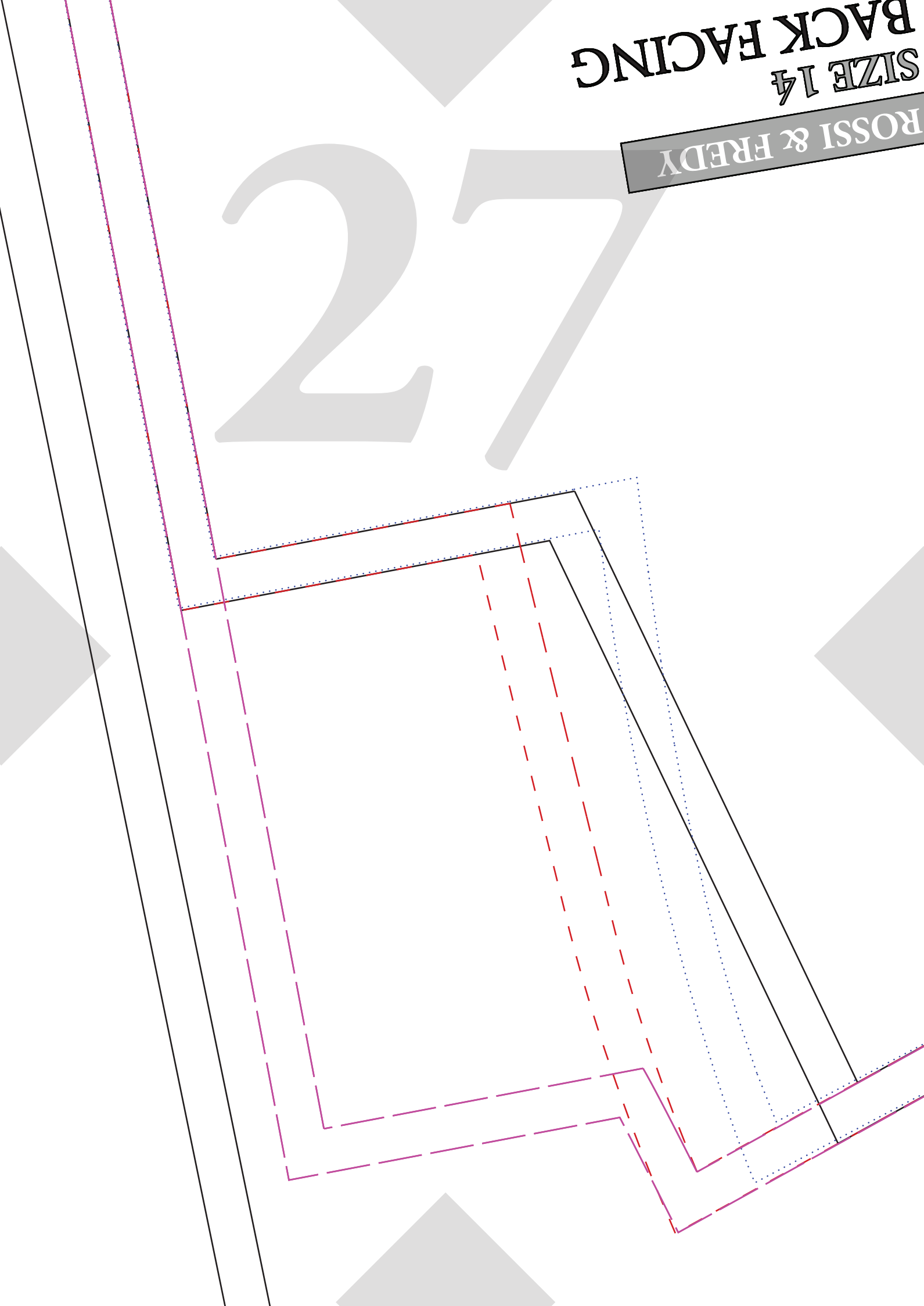


26

BACK FACING
SIZE 1 1/4

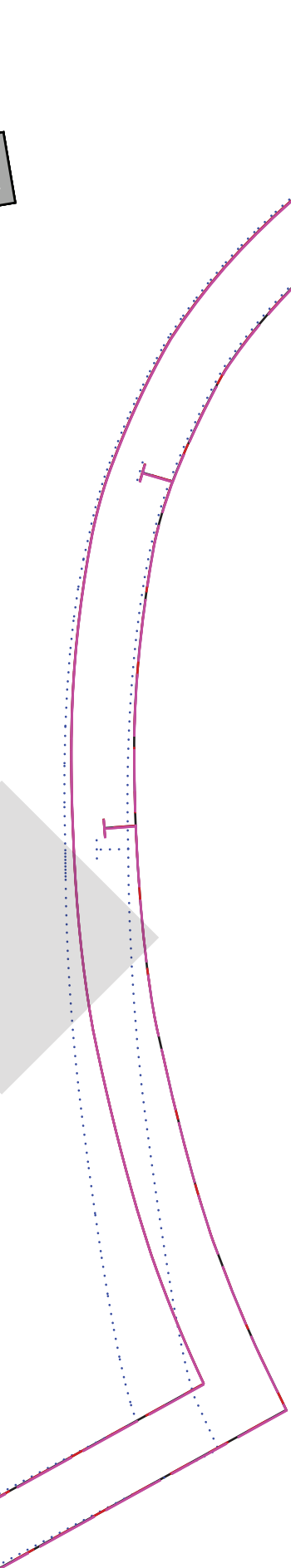
ROSSI & FREDY

27



✓ TO MATCH BOAT NECK FRONT BACK BODICE OPTION

28



Once connected:
Refer to CENTRE BACK #1
for cutting instructions
Seam Allowance included:
1cm (3/8")

↗
Grain line



29

For Height 150

For Height 16

For Heig

For Height 171cm

30

- 160cm

For Height 150 - 160cm

1 - 170cm

For Height 161 - 170cm

ght 171cm +

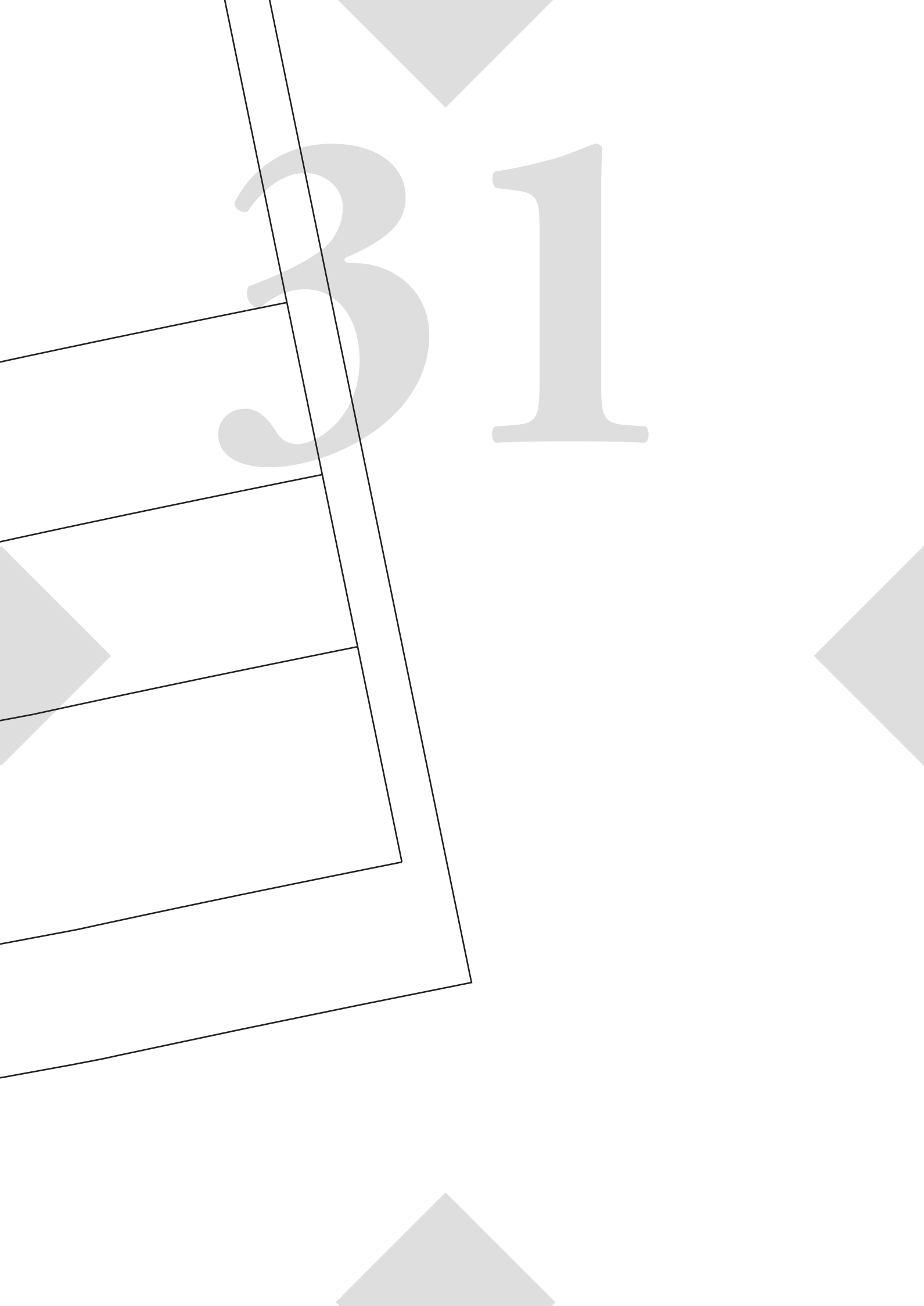
For Height 171cm+

+ (Extra Long)

For Height 171cm+ (Extra Long)

3

1



Fold Line / G



Connect Pattern Piece to
Cback #1 at notches below.

Details:

Boat Neck Front

To Match:

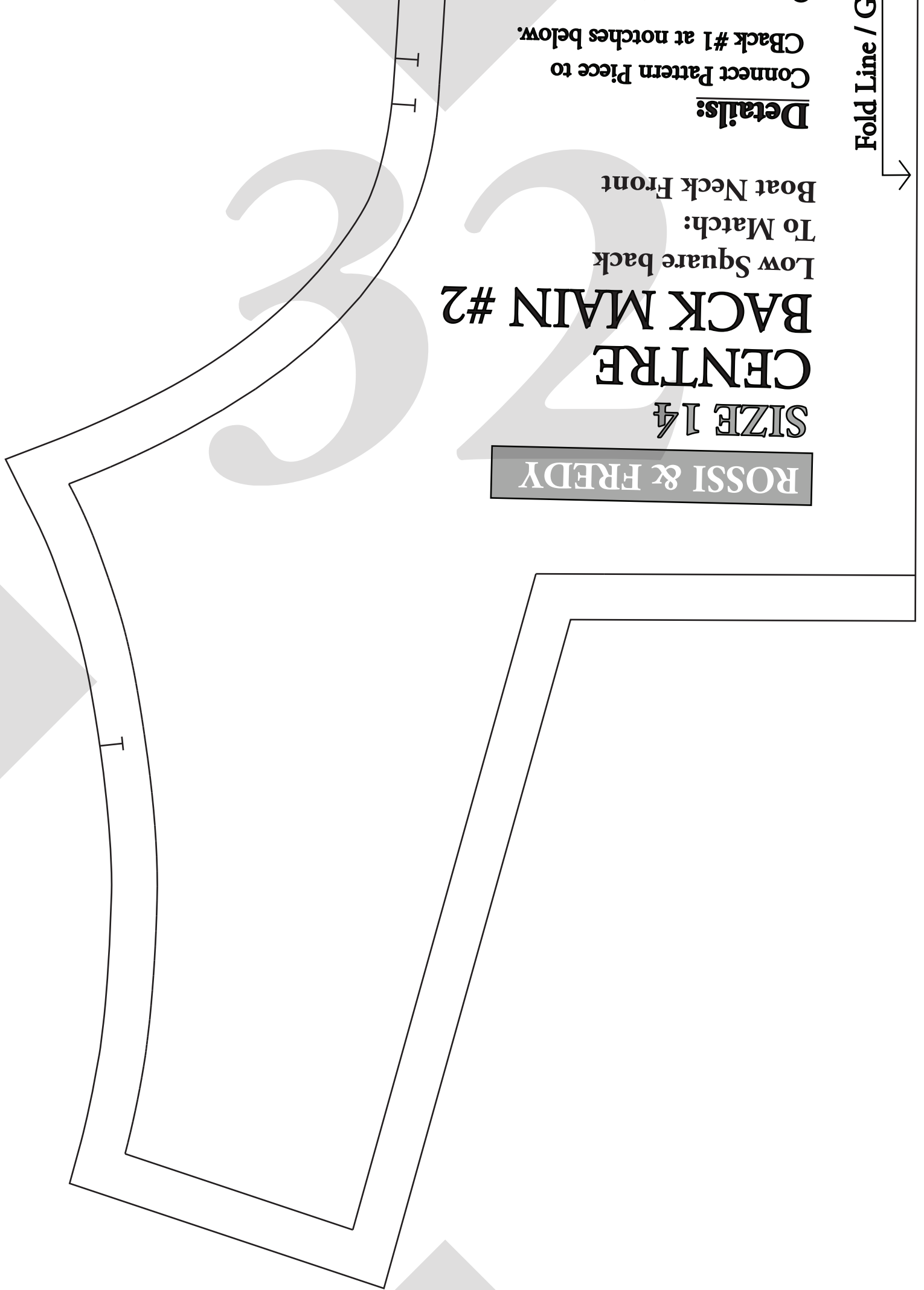
Low Square back

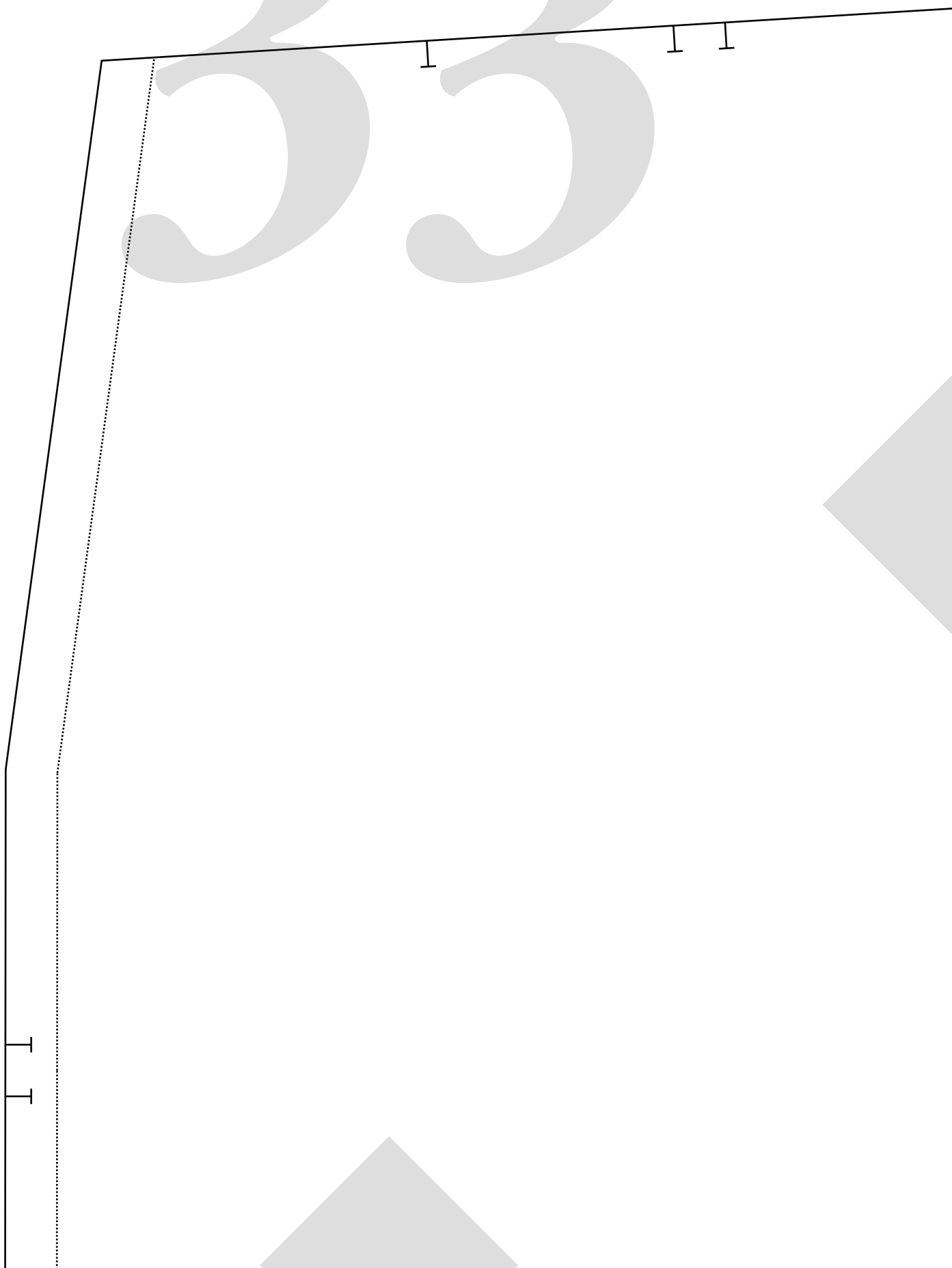
BACK MAIN #2

CENTRE

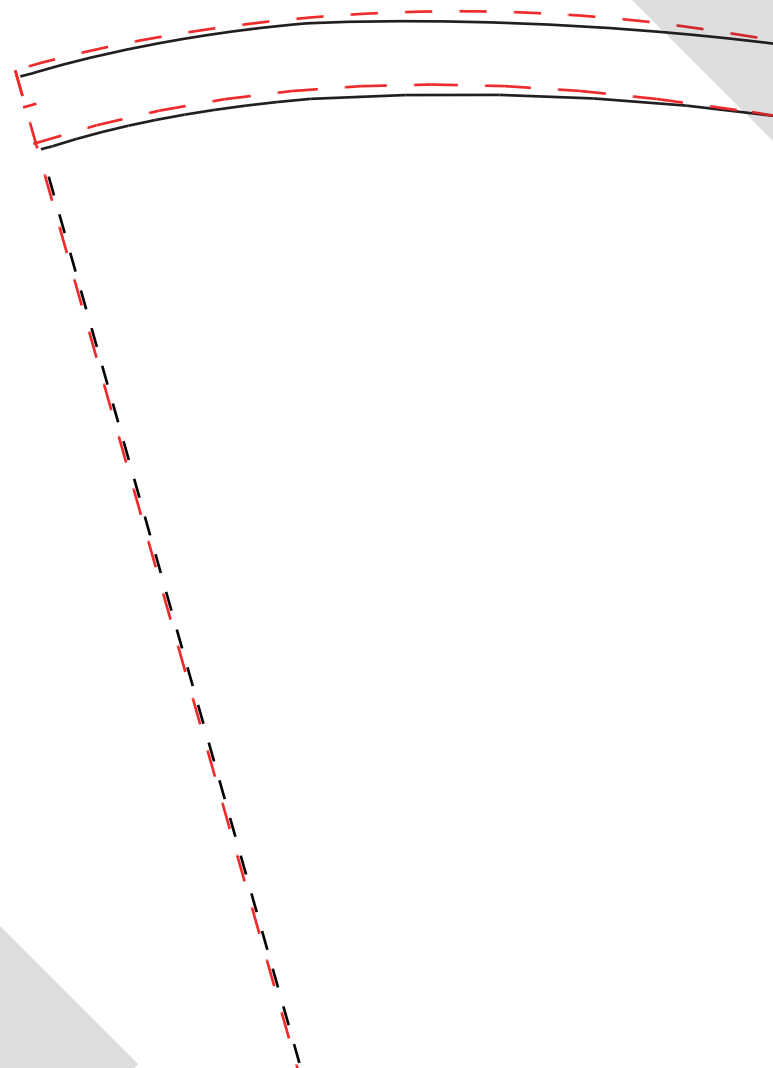
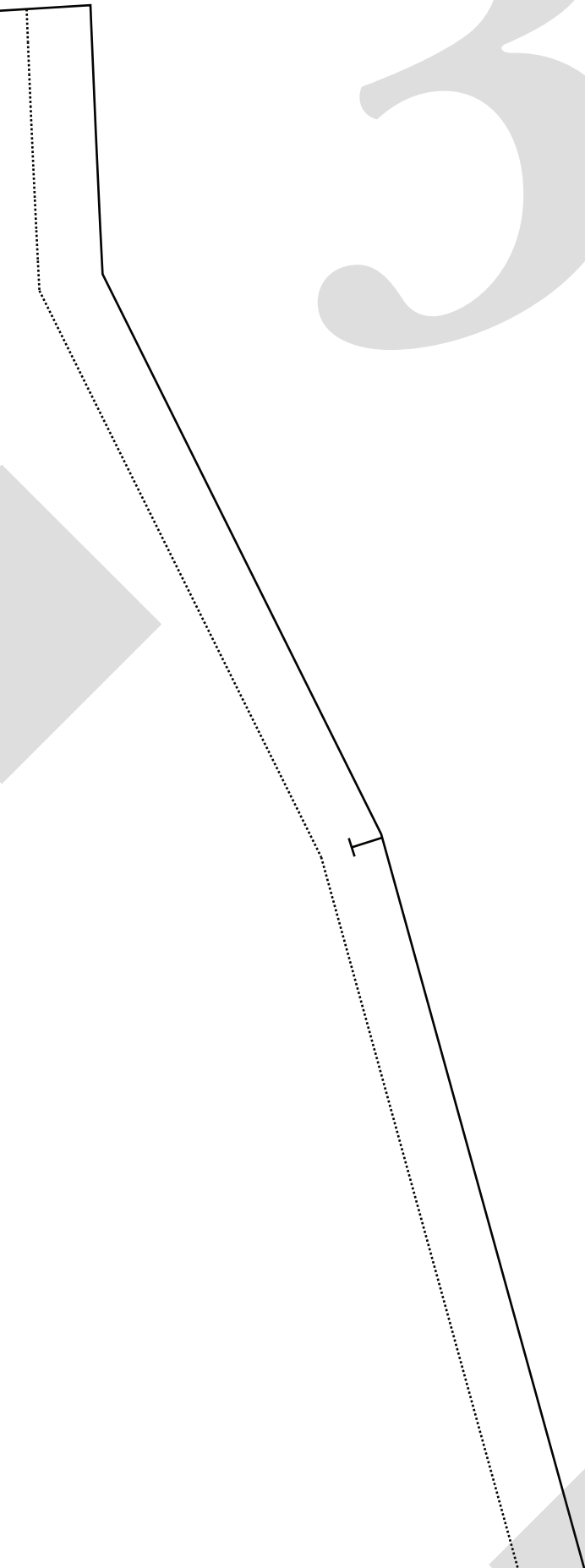
SIZE 1 1/4

ROSSI & FREDY





34



RC

SIZE

SHO

SLE

Gr

Fold Line

A diagram of a rectangular piece with two horizontal dotted lines representing fold lines. Two arrows point from the fold lines towards the center of the rectangle. The text 'Fold Line' is written vertically between the arrows.

ROSSI & FREDY

E 14

SHORT PUFF
EVE CUFF

in Line 

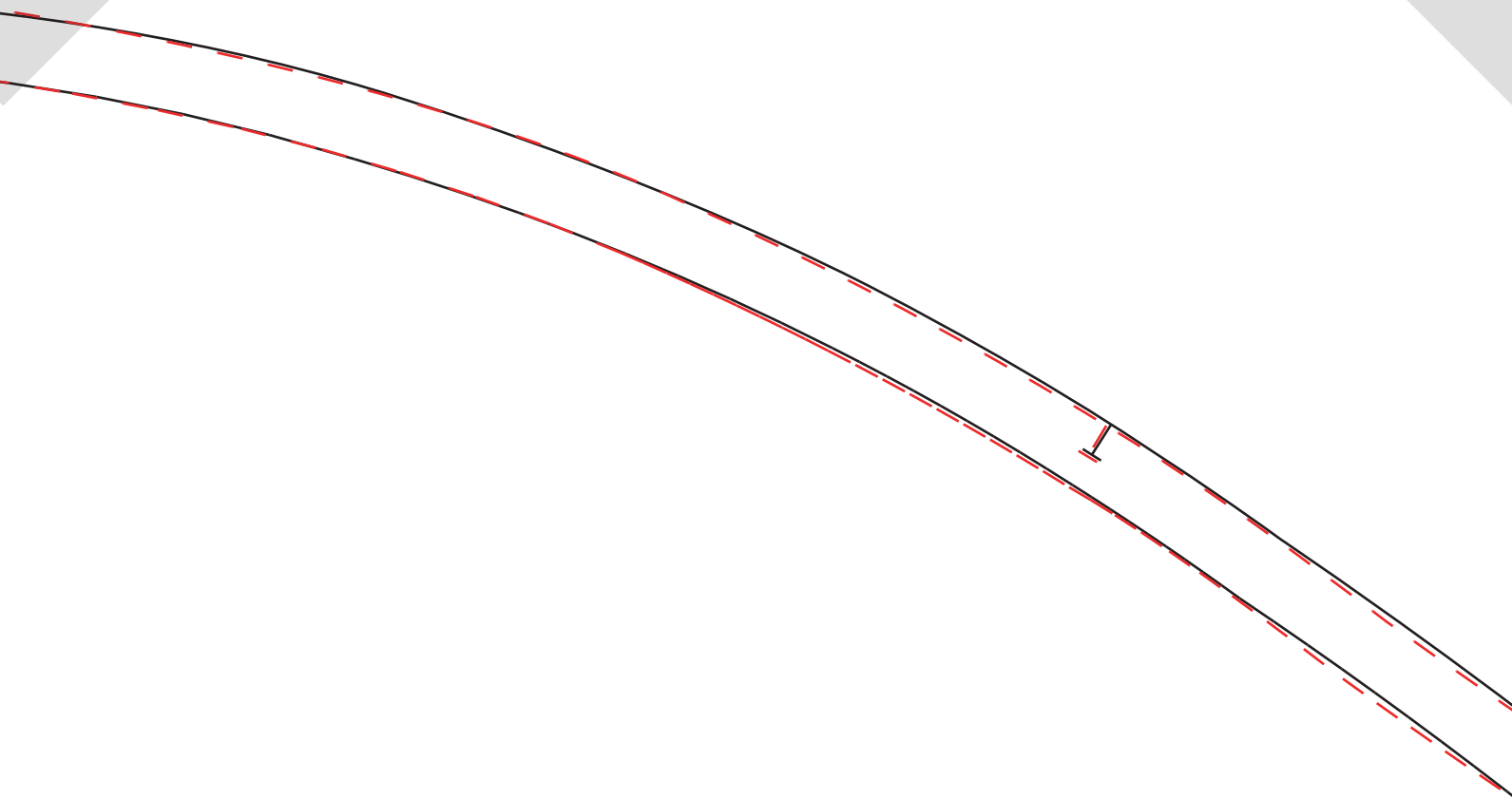
Details:

Cut x2 on Fold

(Measure upper arm to compare

See beginning of sewing instructions)

Seam Allowance included: 1cm (3/8")



ROSSI & FREDY

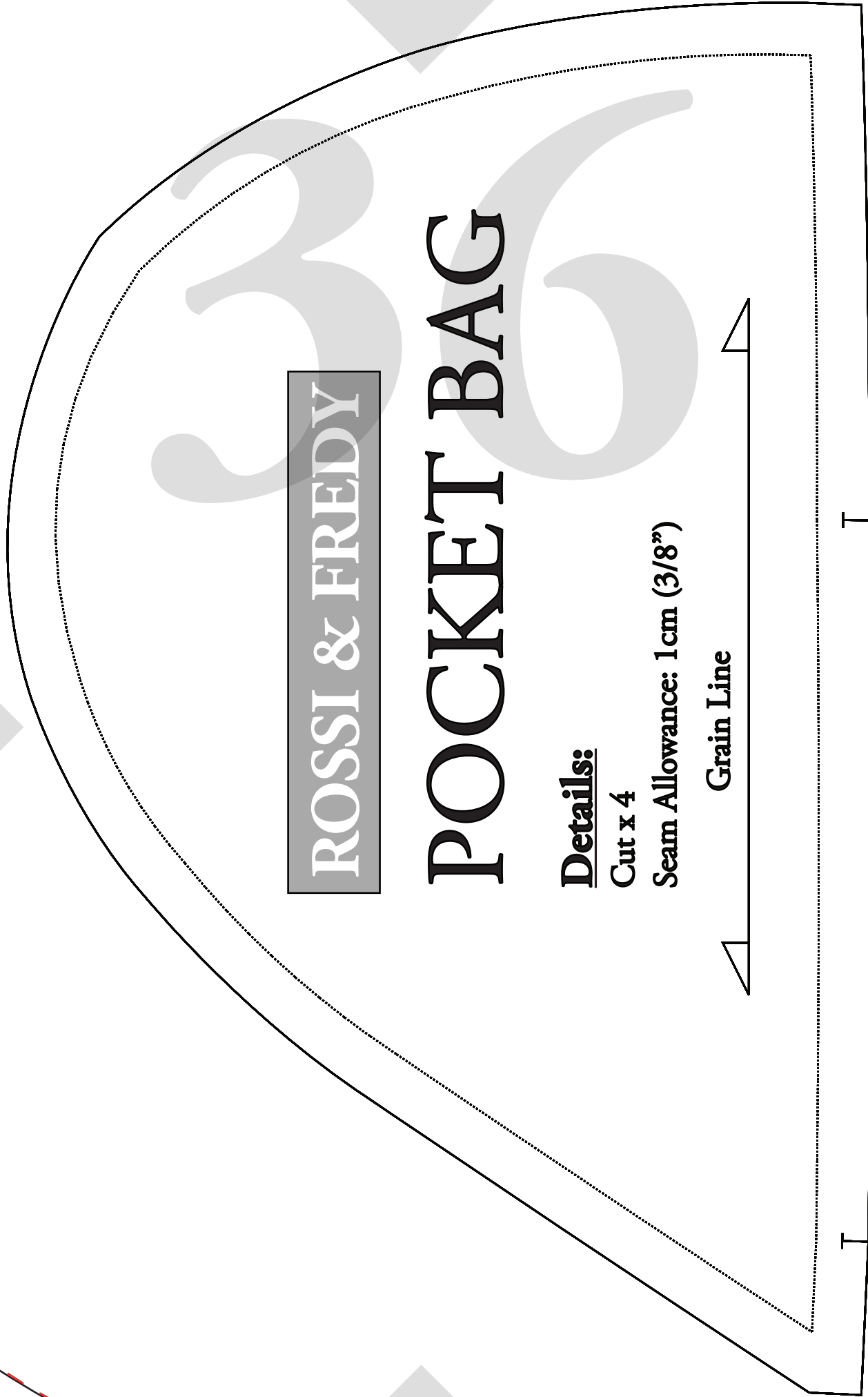
POCKET BAG

Details:

Cut x 4

Seam Allowance: 1cm (3/8")

Grain Line



ROSSI & FREDY

SIZE 14

SIDE BACK #1

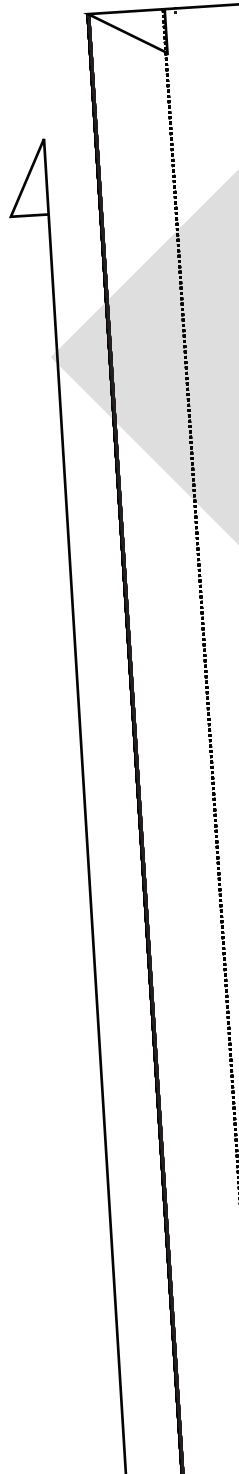
Details:

Connect Pattern Piece to #2
at notches at top of pattern piece

Once connected:

Cut x 1 Pair (2 pieces all up)

Seam Allowance included: 1cm (3/8")



38

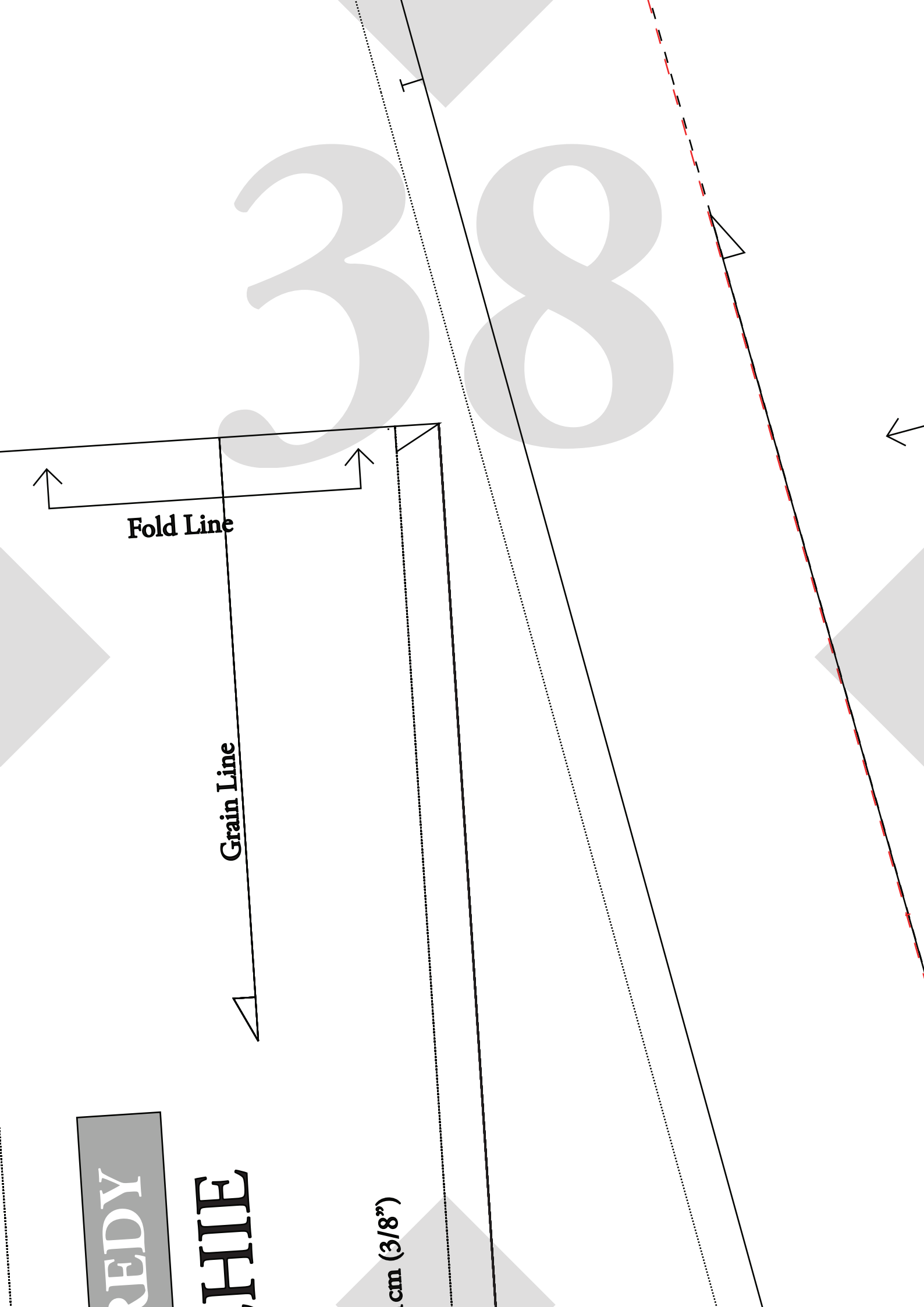
Fold Line

Grain Line

REDY

WHIE

cm (3/8")



Grain Line / Fold Line

ROSSI & FREDY

SIZE 14

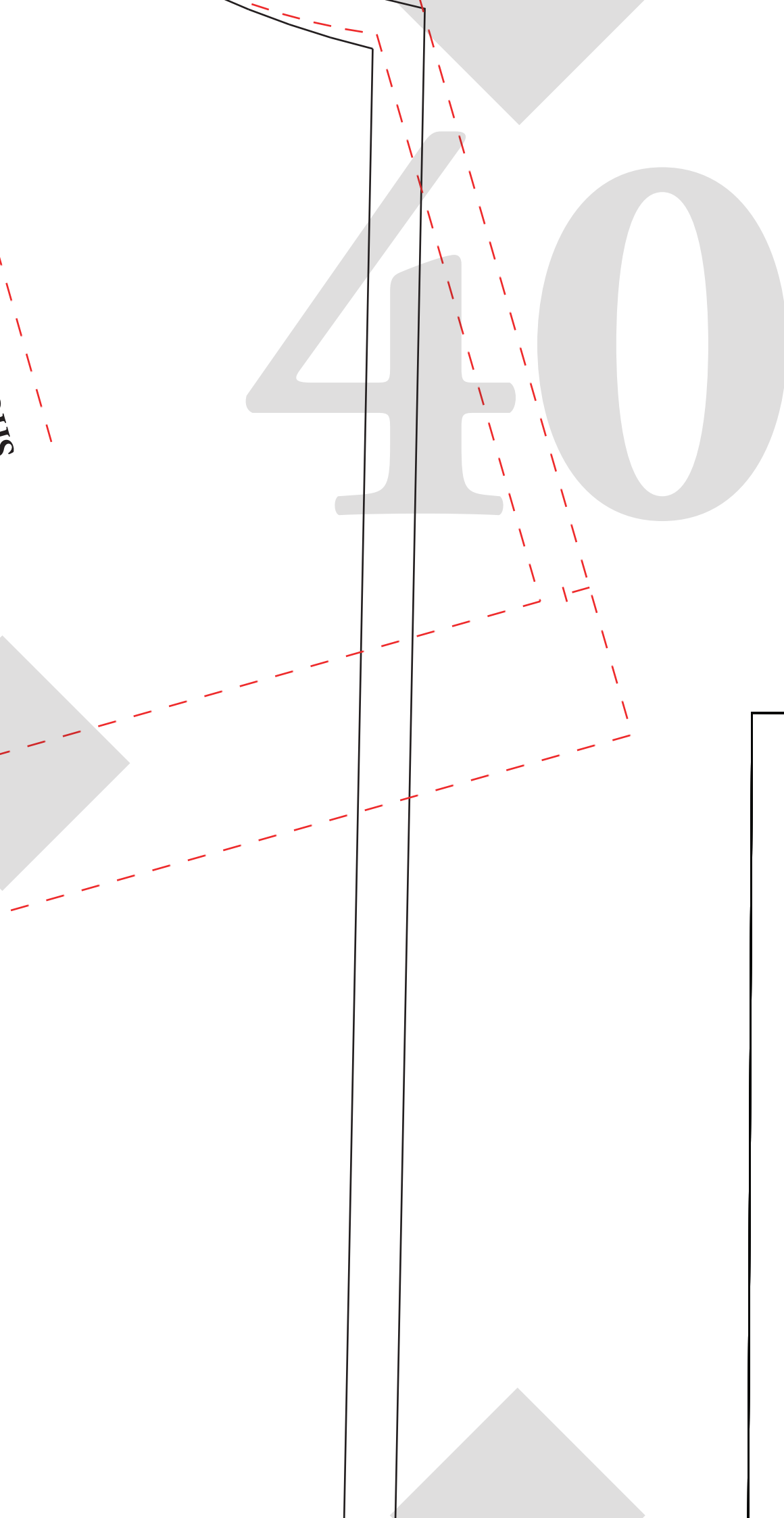
SHORT PUFF SLEEVE

Details:
Cut x 2 on fold

Seam Allowance included: 1 cm (3/8")

LINE KEY

SHORT PUFF SLEEVE:



Details:


Cut x 2

Seam Allowance: 1 cm (3/8")



41

Grain Line



ROSSI & FREDY

HEAD SCARF

Details:

Cut x 1 on fold. Include scrunchie section

Seam Allowance included: 1cm (3/8")

ROSSI & FR

SCRUNCH

Details:

Cut x 1 on fold

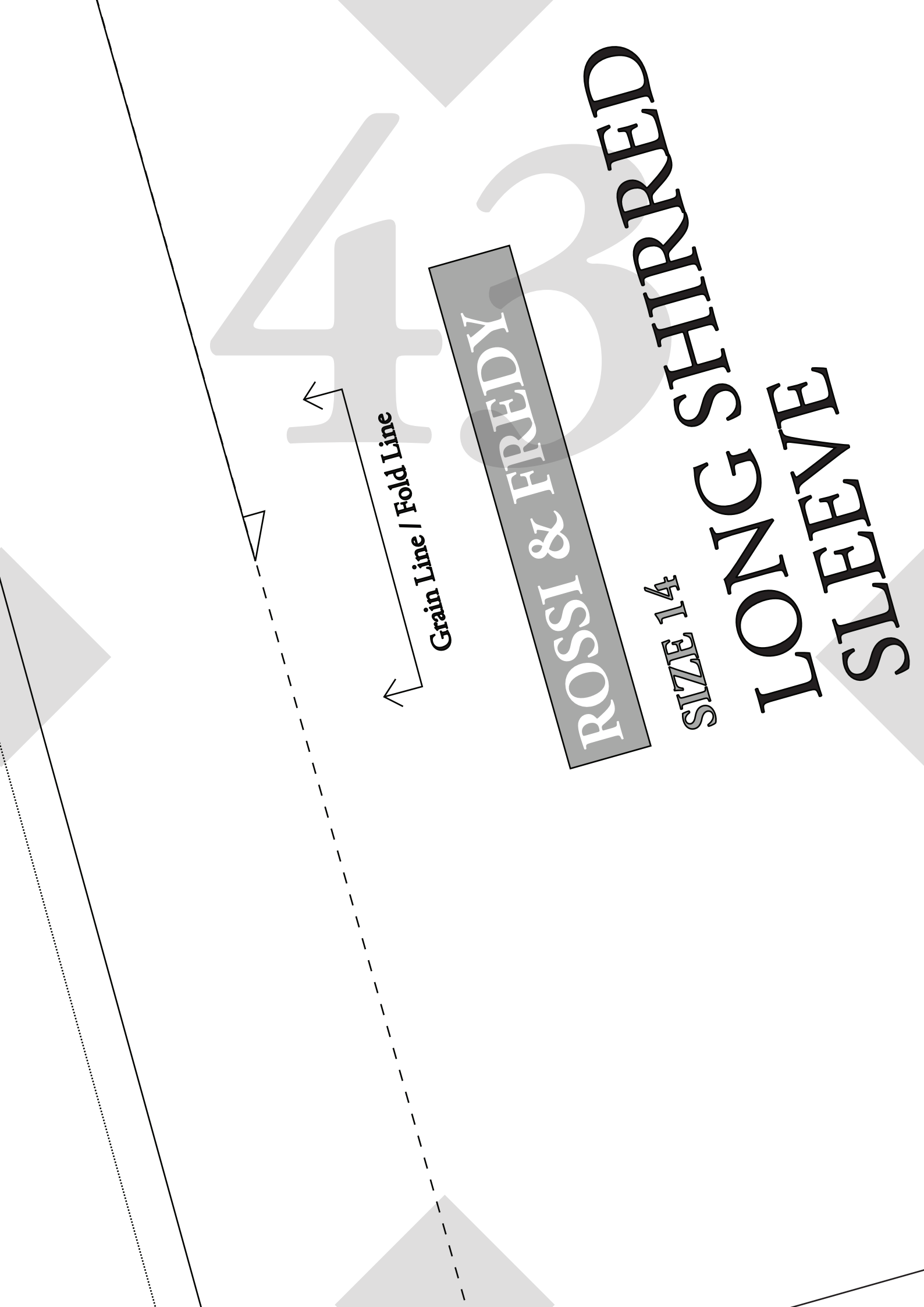
Seam Allowance included: 1

ROSSI & FREDY

SIZE 14

**LONG SHIRRED
LONG SLEEVE**

Grain Line / Fold Line



Details:
Cut x 2 on fold
Seam Allowance included: 1cm (3/8")

LINE KEY

LONG SHIRRED:

ROSSI & FREDY

BACK NECK TIE

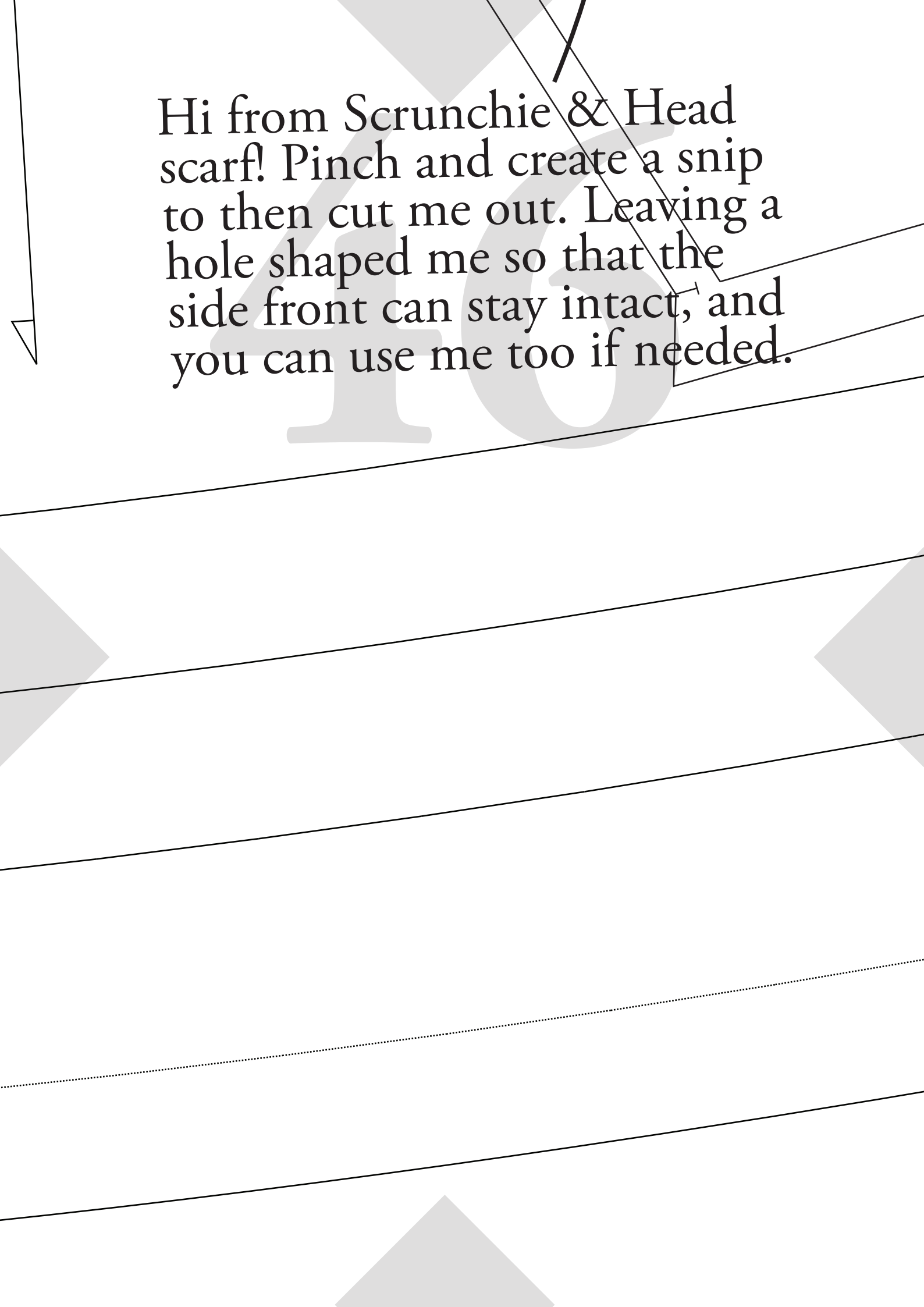
45

For Height 150 - 160cm

For Height 161 - 170cm

For Height 171cm+

For Height 171cm+ (Extra Long)



Hi from Scrunchie & Head scarf! Pinch and create a snip to then cut me out. Leaving a hole shaped me so that the side front can stay intact, and you can use me too if needed.

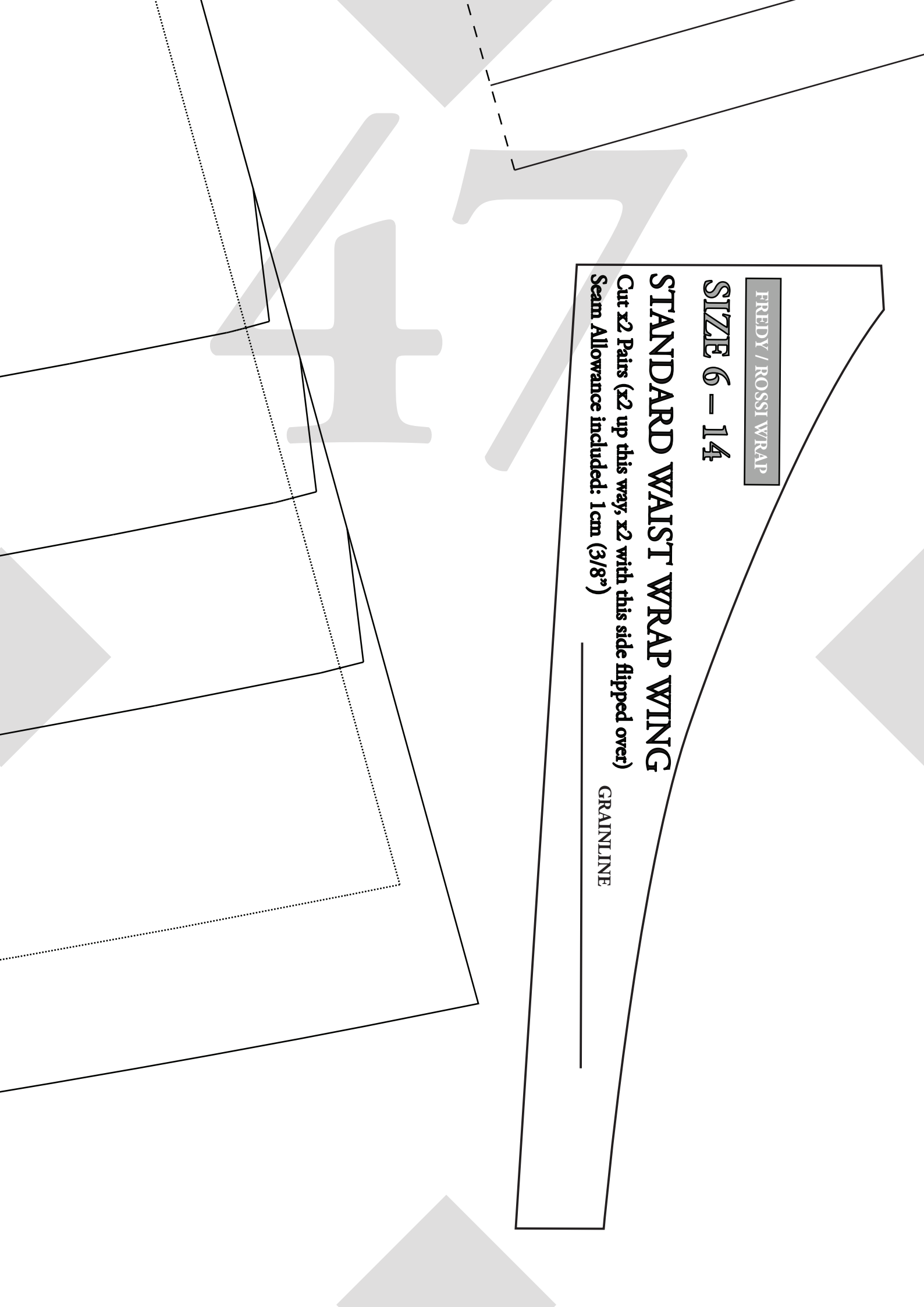
FREDY / ROSSI WRAP

SIZE 6 - 14

STANDARD WAIST WRAP WING

Cut x2 Pairs (x2 up this way, x2 with this side flipped over)
Seam Allowance included: 1cm (3/8")

GRAINLINE



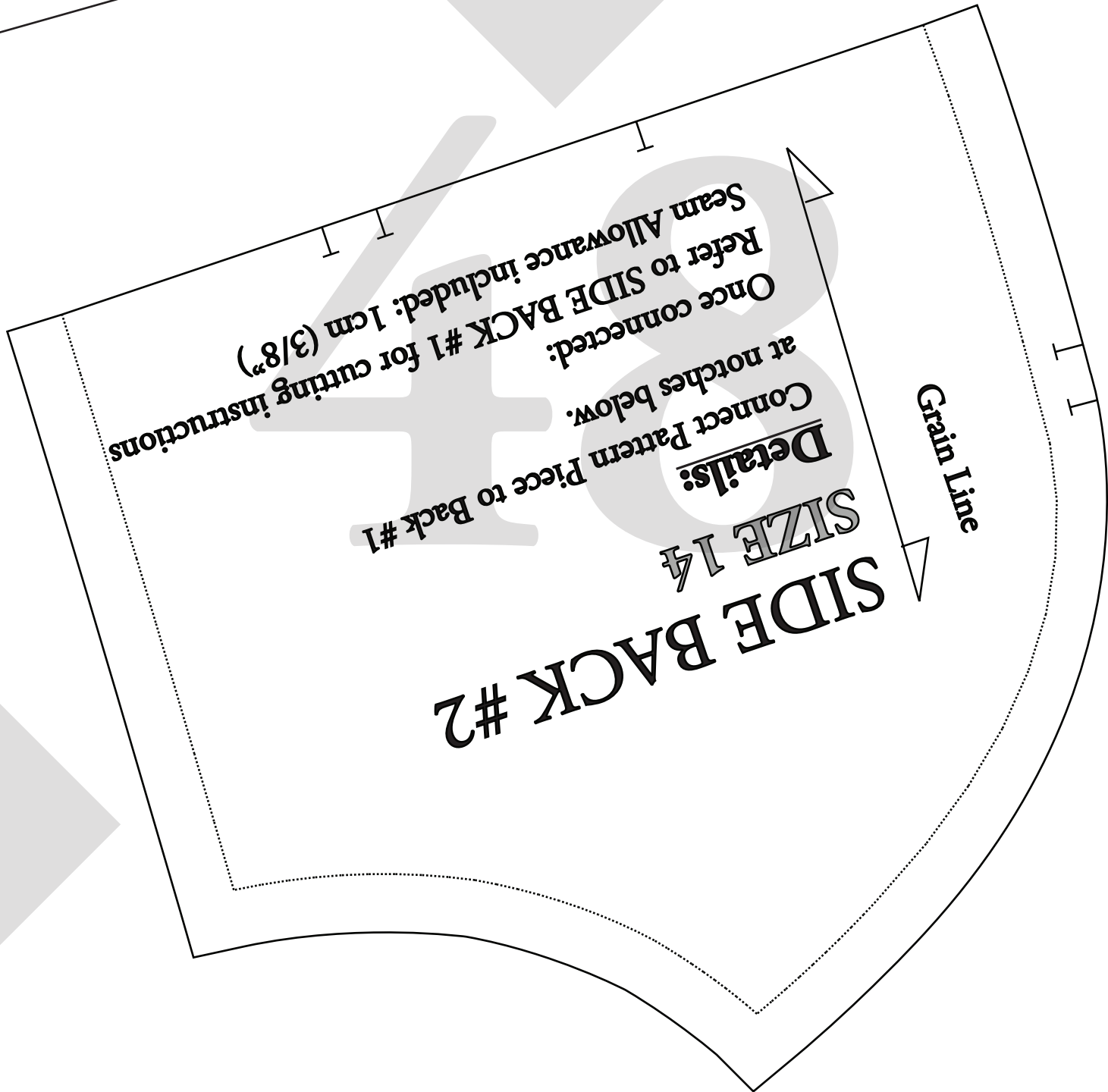
Seam Allowance included: 1cm (3/8")
Refer to SIDE BACK #1 for cutting instructions

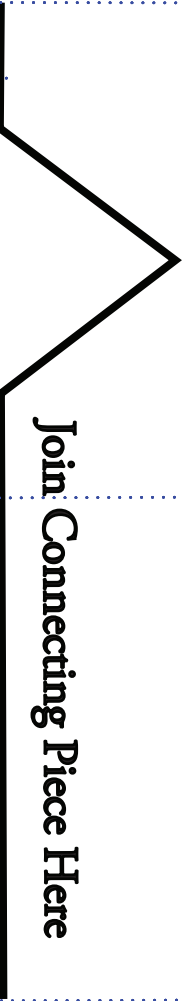
Once connected:
Connect Pattern Piece to Back #1
at notches below:

Details:
SIZE 14

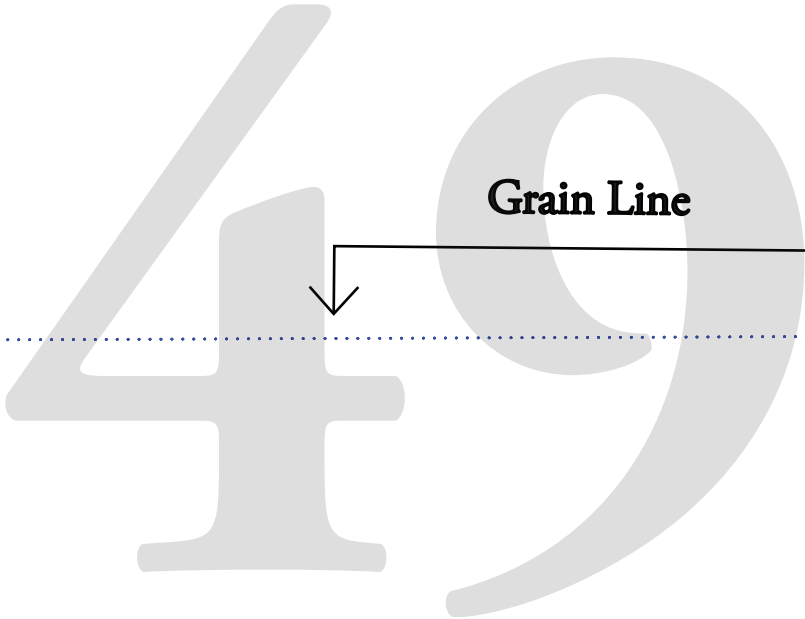
SIDE BACK #2

Grain Line

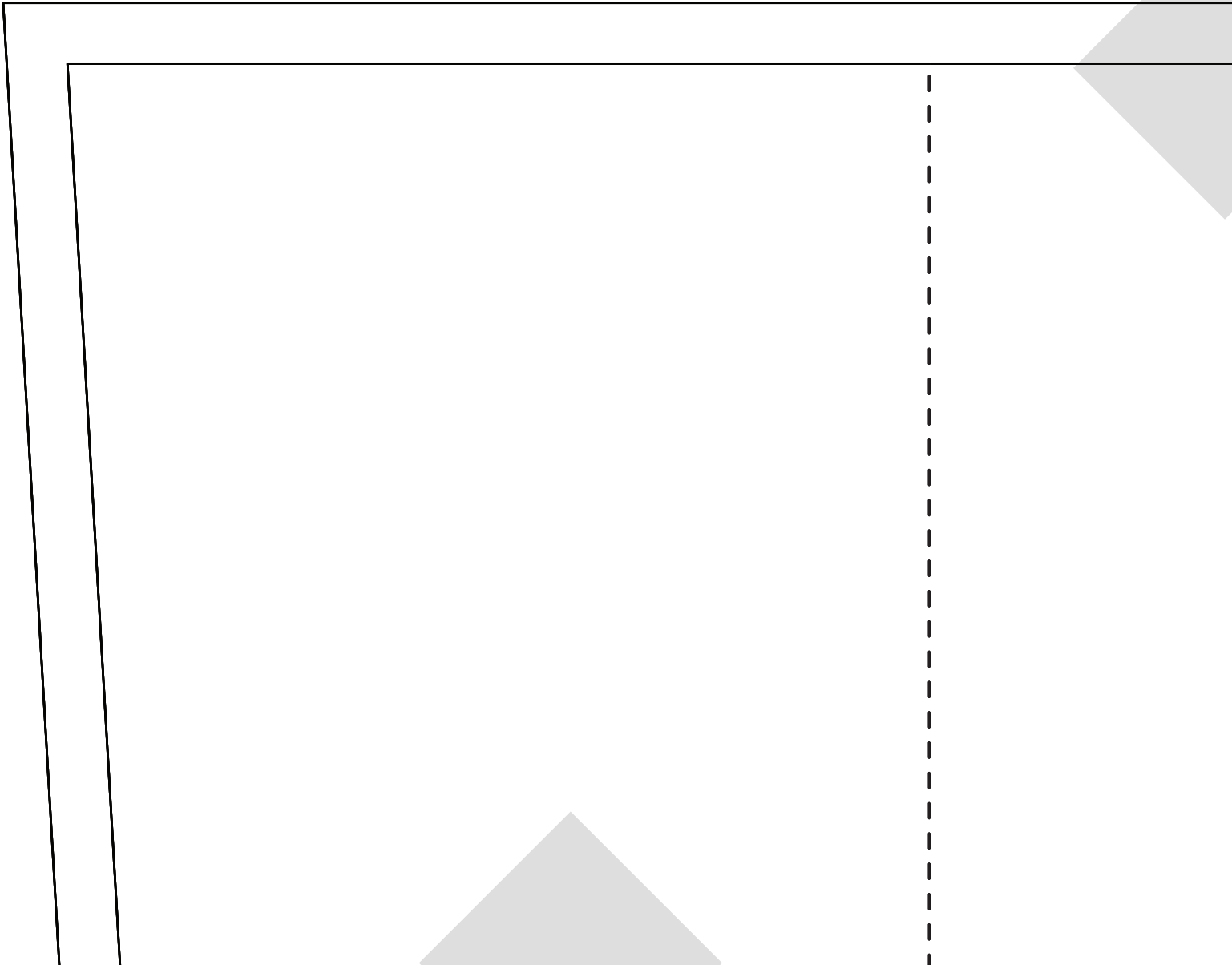




Join Connecting Piece Here



Grain Line



SIZE 6 - 14

TWO TONE WAIST WRAP

#2

Details:

Connect Pattern Piece to #1

See Wrap #1 once connected

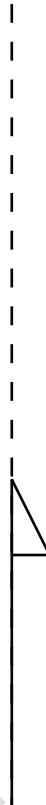
for cutting instructions

Seam Allowance included: 1 cm (3/8")

51

52

Join Connecting Piece Here



53

Grain Line / Fold Line

ROSSI & FREDY

SIZE 6 - 14

STANDARD

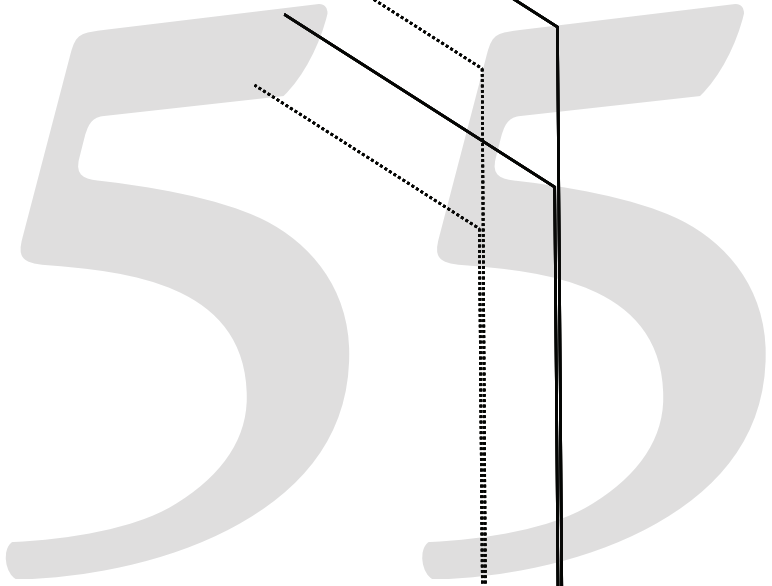
THU

54

ROSSI & FRE

SIZE 6 - 14

STANDAL



Grain Line / Fold Line

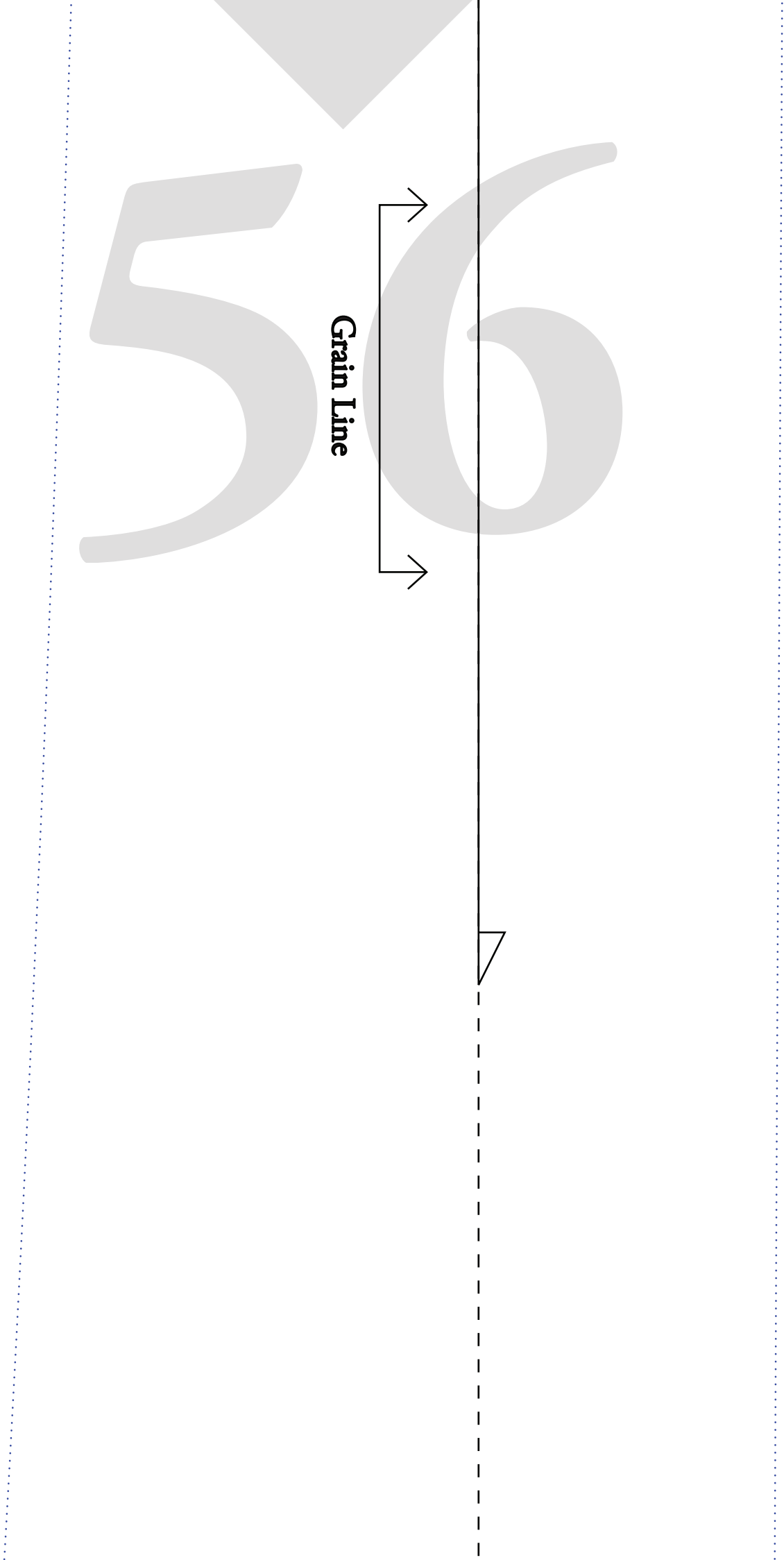


RDY

RD, THIN

56

Grain Line



STANDARD + TH WAIST WRAP #1

Details:

Connect Pattern Piece to #2

Once connected:

Cut x 2

Seam Allowance included: 1cm (3/8")



Join Connecting Piece Here

IN

STANDARD WAIST W

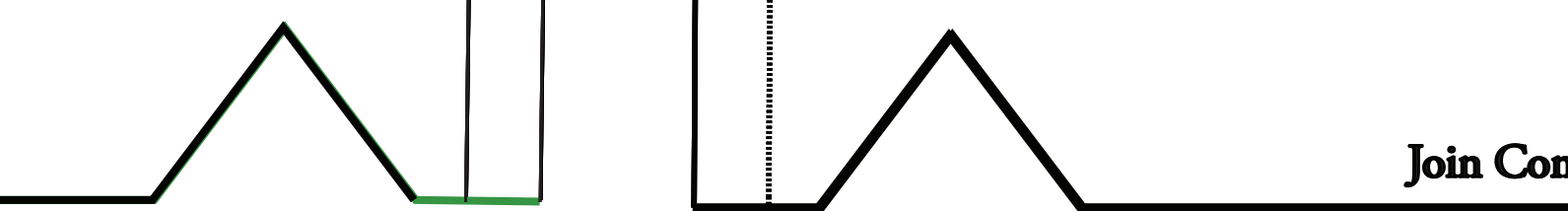
58

Details:

Connect Pattern Piece to #1

See Wrap #1 once connected for c

Seam Allowance included: 1cm (3



Join Con

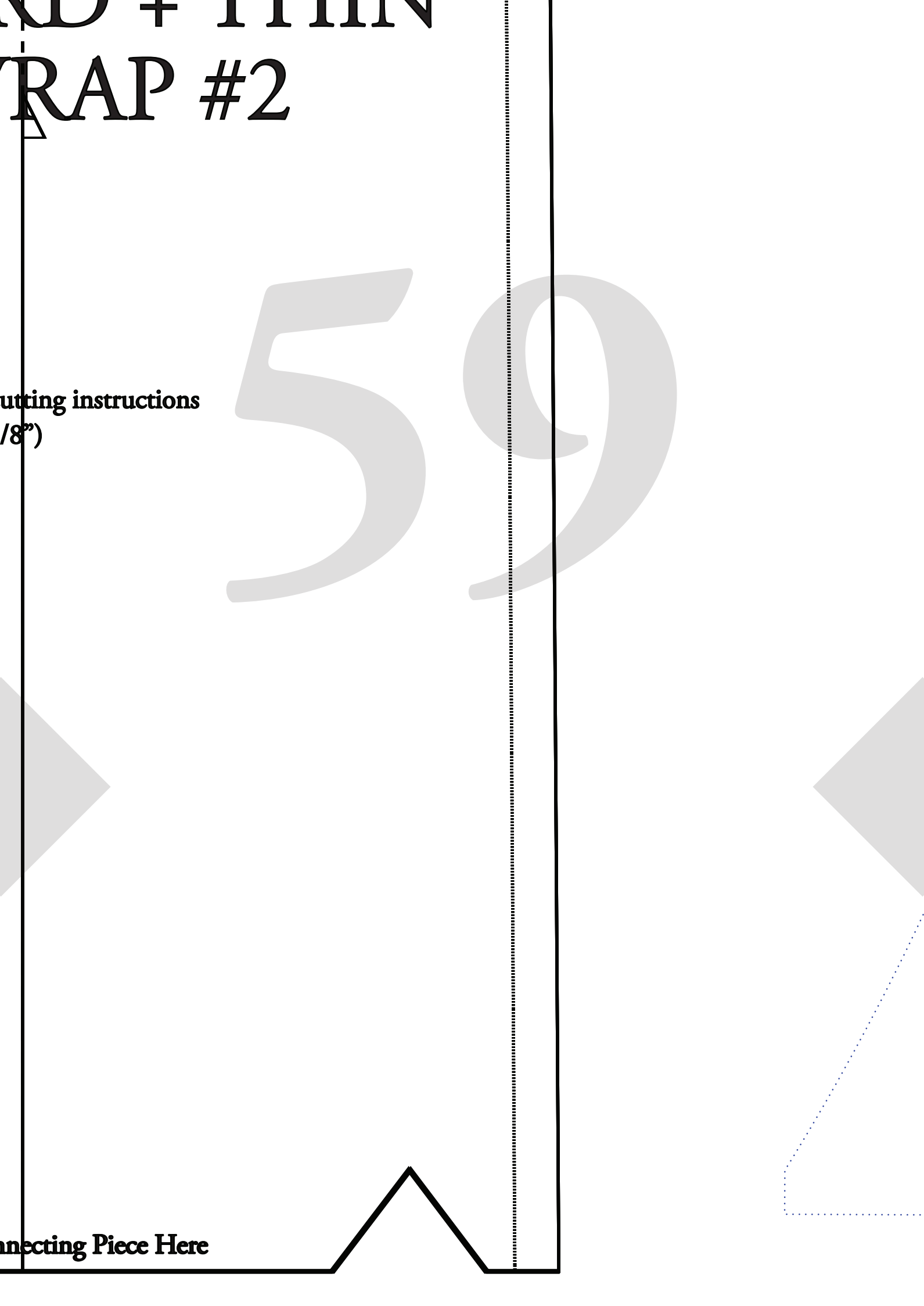
WOOD + THIN

TRAP #2

Cutting instructions
(1/8")

50

Connecting Piece Here



ROSSI & FREDY

SIZE 6 – 14

TWO TONE WAIST WRAP #1

Details:

Connect Pattern Piece to #2

Once Connected :

Cut x 2 in Primary Colour (one pair)

Cut x 2 in Secondary Colour (one pair)

Seam Allowance included: 1cm (3/8")