

A4 PRINTING INSTRUCTIONS

Before you get started on creating your Rossi of Fredy Wrap, make sure to read the below notes so that you can make sure your printer is calibrated and prints the patterns to the correct size.

Before you begin, please make sure you are printing on A4 paper with an A4 printer, not letter paper as the small difference in the paper size can mean your patterns don't print correct. A4 measures 210 x 297mm

1. Select Layers / styles:

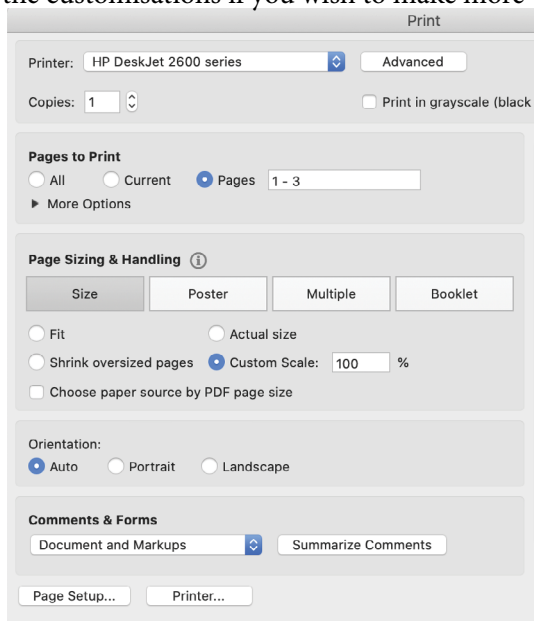
Make sure you have gone through the PDF and selected all necessary layers + Customisations that you need for your Rossi / Fredy Wrap in instructions. You can print out all the customisations if you wish to make more variations in future.

2. Print the first three pages as a test print:

We strongly suggest printing the first three pages as a test to make sure everything is set up correctly, to save time, paper and the environment.

When printing in Adobe Acrobat, do as follows:

- File > Print
- Select your printer
- Click 'Pages' and then type '1 - 3' (for test print)
- Click 'Custom Scale' and type '100%'
- Click 'PRINT'

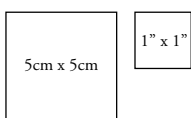


3. Calibrate and measure

When printing, although you would've selected '100%', most common household printers will print with a white border. Don't worry, this won't affect measurements and you **SHOULD NOT** trim the borders. However, to check this is correct for your printer – we have provided two tests of calibration squares.

3a: Single Square Calibration

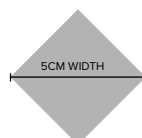
On the first pattern page, you will see a 5x5cm square and a 1"x1" square. Using your ruler, measure these squares to make sure they (along with your patterns) have printed to the correct scale.



Note: These calibration squares are an example only and are not printed to scale.

3b: Across-Page Diamond Calibration

You will then see a grey diamond split across the first two pattern pages (similar to the below example). Simply measure from one corner of the diamond to the other corner. This should measure 5cm from left point to right point.



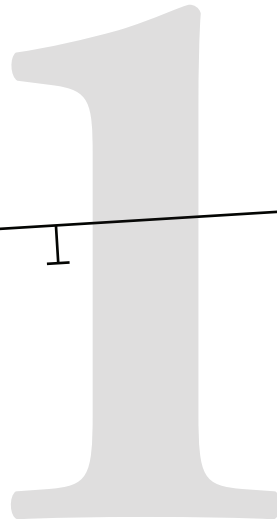
Note: This diamond is an example only and is not printed to scale.

4. You're all set and ready to go!

Once you have successfully tested and printed the first couple of pages, and double-checked the calibration as per steps 3a and 3b, you're all set to go!

5cm x 5cm

1" x 1"



ROSSI & FREDY

SIZE 12

SIDE FRONT #1

Details:

Connect Pattern Piece to #2
at notches at top of pattern piece.

Once connected:

Cut x 1 Pair (2 pieces all up)

Seam Allowance included: 1cm (3/8")

5CM WIDTH

Grain Line

ROSSI & FREDY

SIZE 12

SIDE FRONT #2

Details:

Connect Pattern Piece to Front #1
at notches below.

Once connected:
Refer to SIDE FRONT #1 for cutting
instructions
Seam Allowance included: 1cm (3/8")



A technical drawing of a pattern piece for a garment. The piece is roughly rectangular with a curved bottom edge and a curved right edge. It features a solid black outline and a dashed purple line indicating a seam allowance. A small notch is visible on the left side. A large, faint number '3' is overlaid in the background.

ROSSI & FREDY

SIZE 12

**CENTRE
FRONT MAIN #2**

Details:

**Connect Pattern Piece to
CFront #1 at notches below.**

**Once connected:
Refer to CENTRE FRONT #1
for cutting instructions**

Seam Allowance included: 1cm (3/8")

t h e b o l d o n e

Fredy Wrap + Rossi Wrap – Size 12

© The Bold One Workshop Patterns.
These patterns are copyrighted by
The Bold One Patterns and may not
be copied, shared, or resold.

Reproducing this pattern to sell items
commercially is prohibited.

Seam allowance = 1cm (3/8")

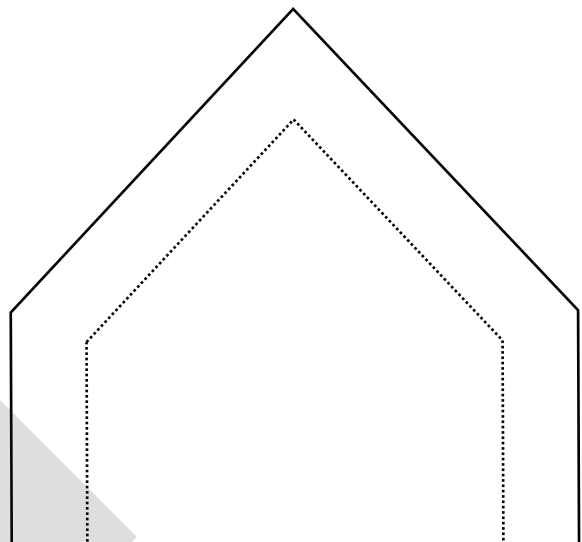
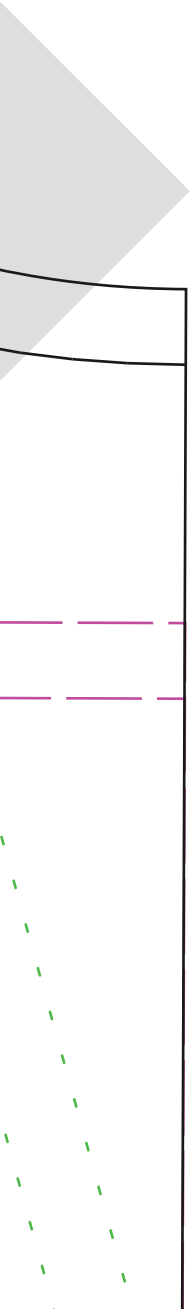
Use the following boxes to check
pattern has been printed to correct scale.



5cm x 5cm



1" x 1"

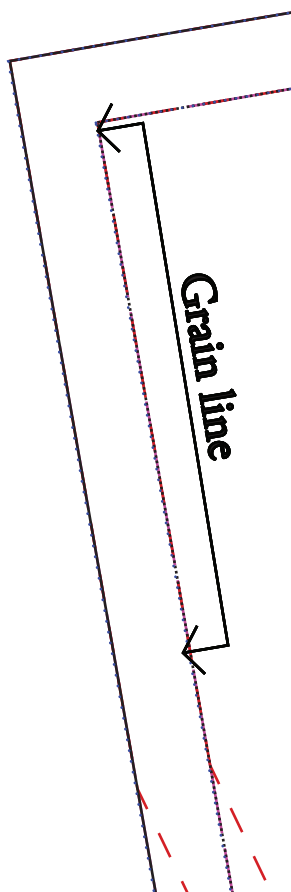


5

Optional Leg
Split notch



6



NECKLINE LINE KEY:

Boat Neck Front:



V Front:



Standard Square Front:



Details:
Cut x1 Pair (x2 pieces in total)
Seam Allowance included:
1cm (3/8")

Deep Square Front:

Standard Square Front:

V Front:

Boat Neck Front:

NECKLINE LINE KEY:

FRONT

Fold Line / Grain line



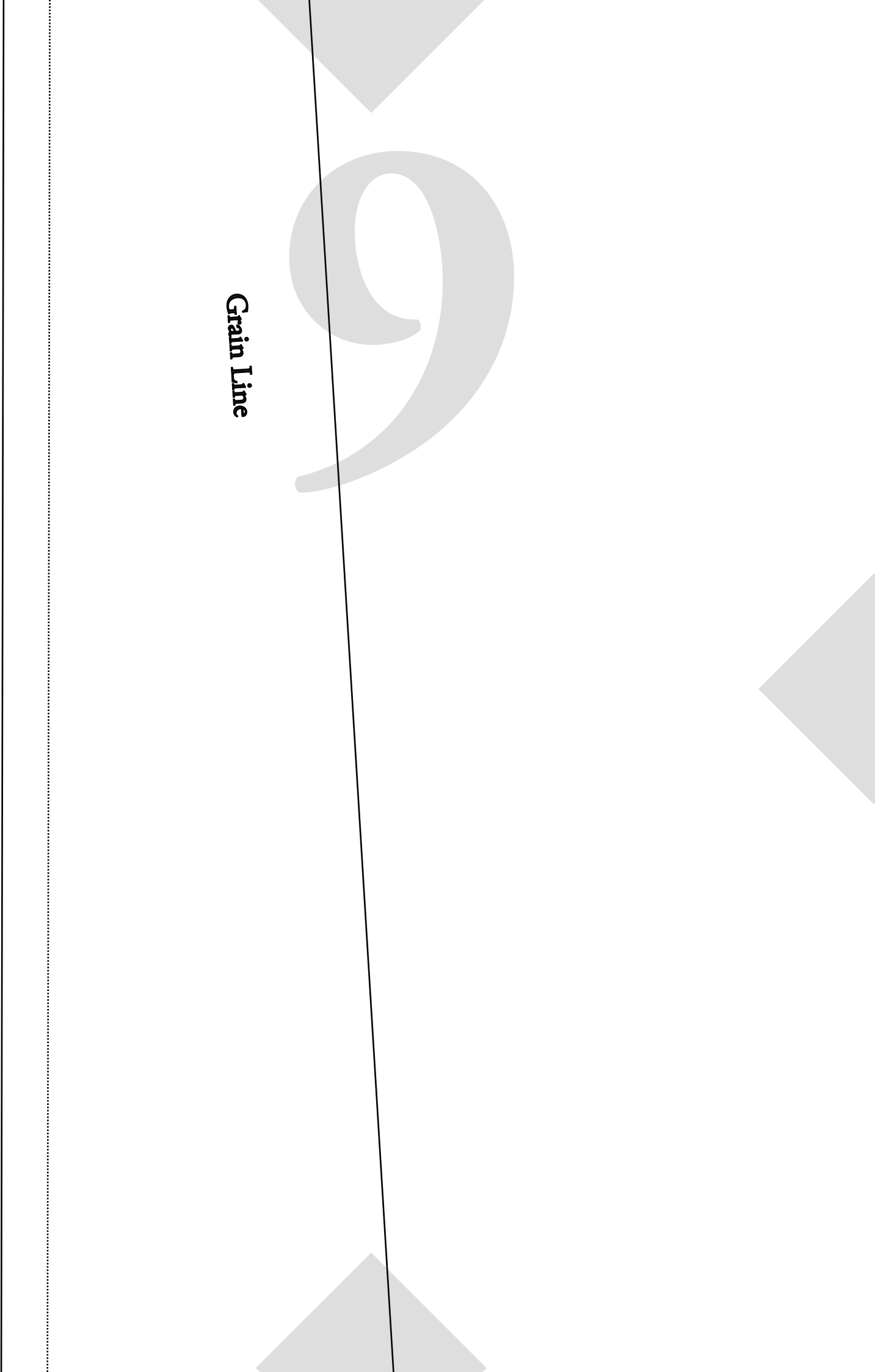
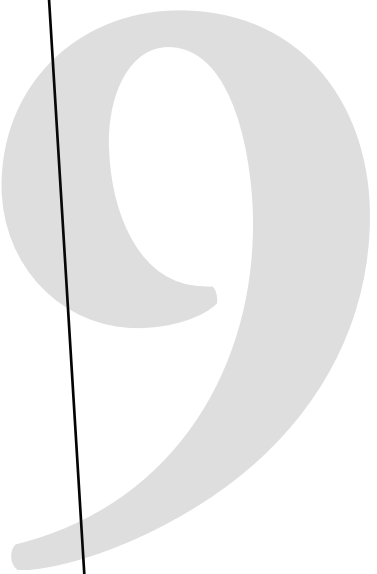
ROSSI WRAP

DEEP SQUARE NECK SHOULDER TIE

Cut x4

Seam Allowance included: 1cm (3/8")

Grain Line

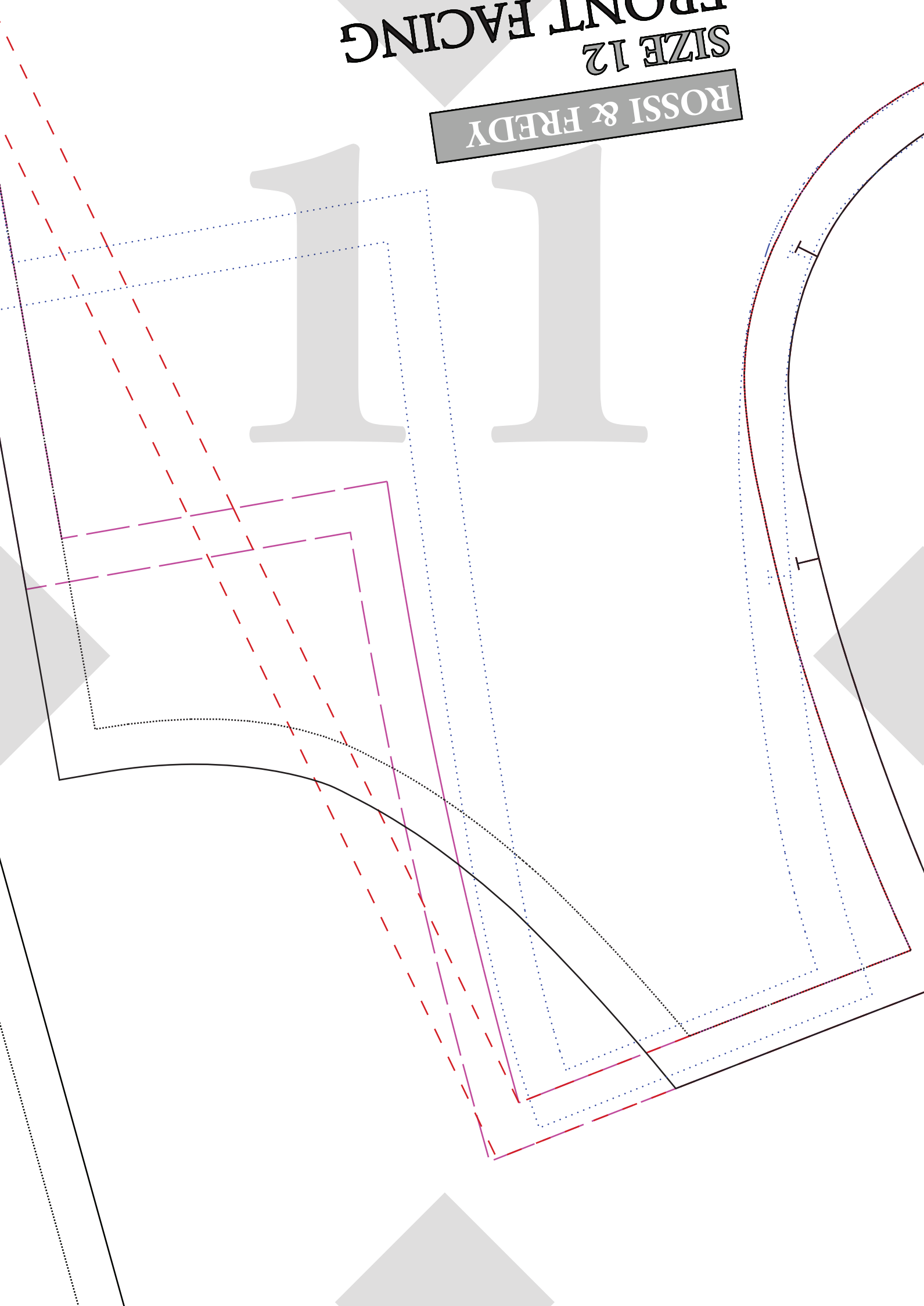
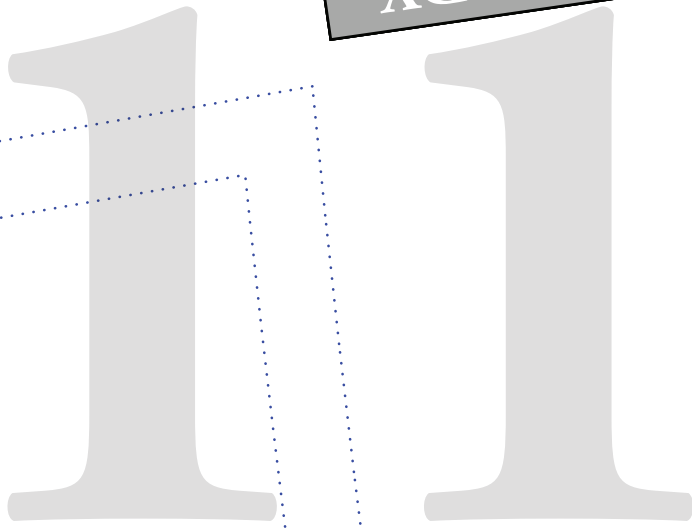


10



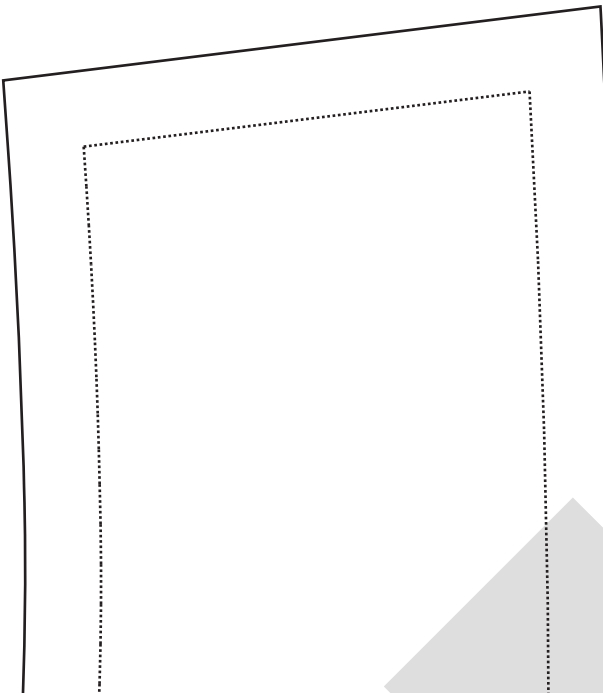
FRONT FACING
SIZE 12

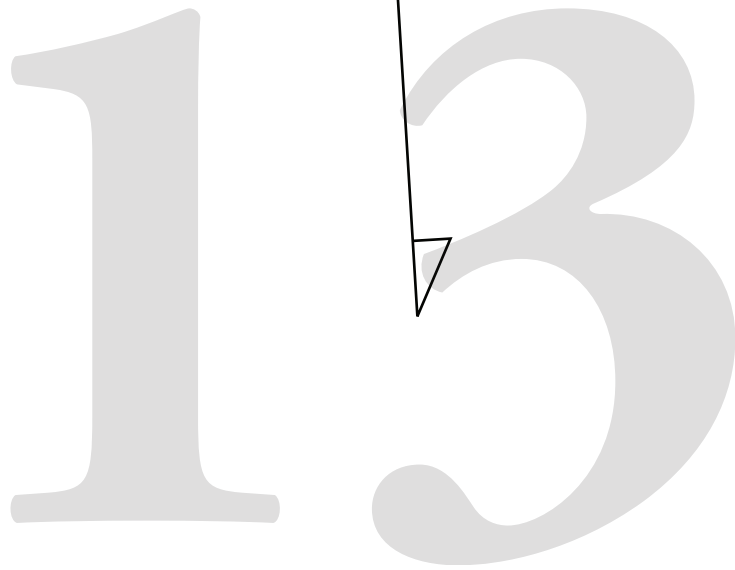
ROSSI & FREDY



12

Grain Line



A large, light gray number '13' is centered at the top of the page. A small black triangle points to the right, touching the middle of the number '3'.

13

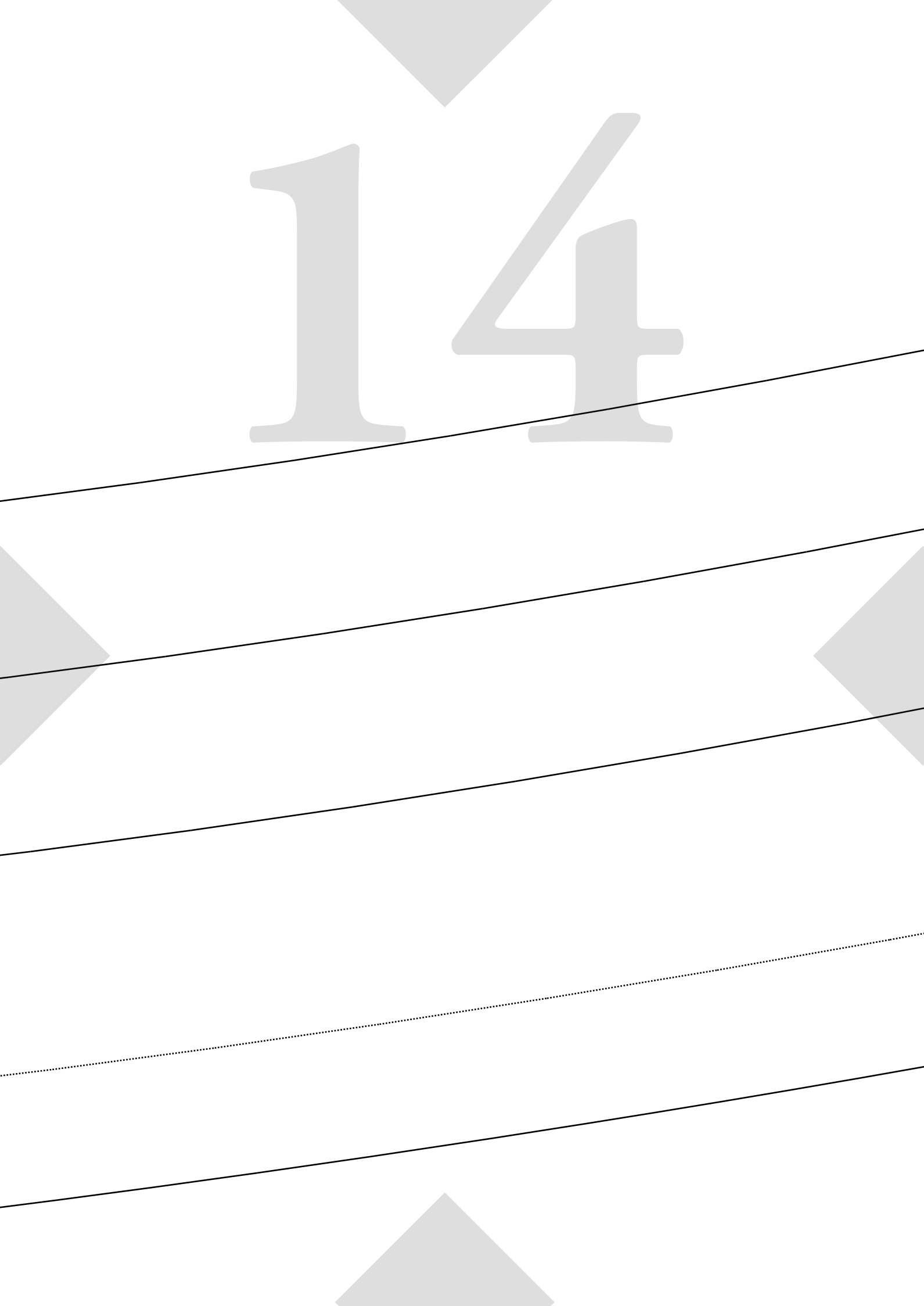
For Height 150 - 160cm

For Height 161 - 170cm

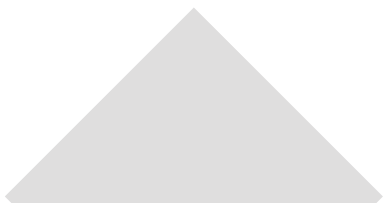
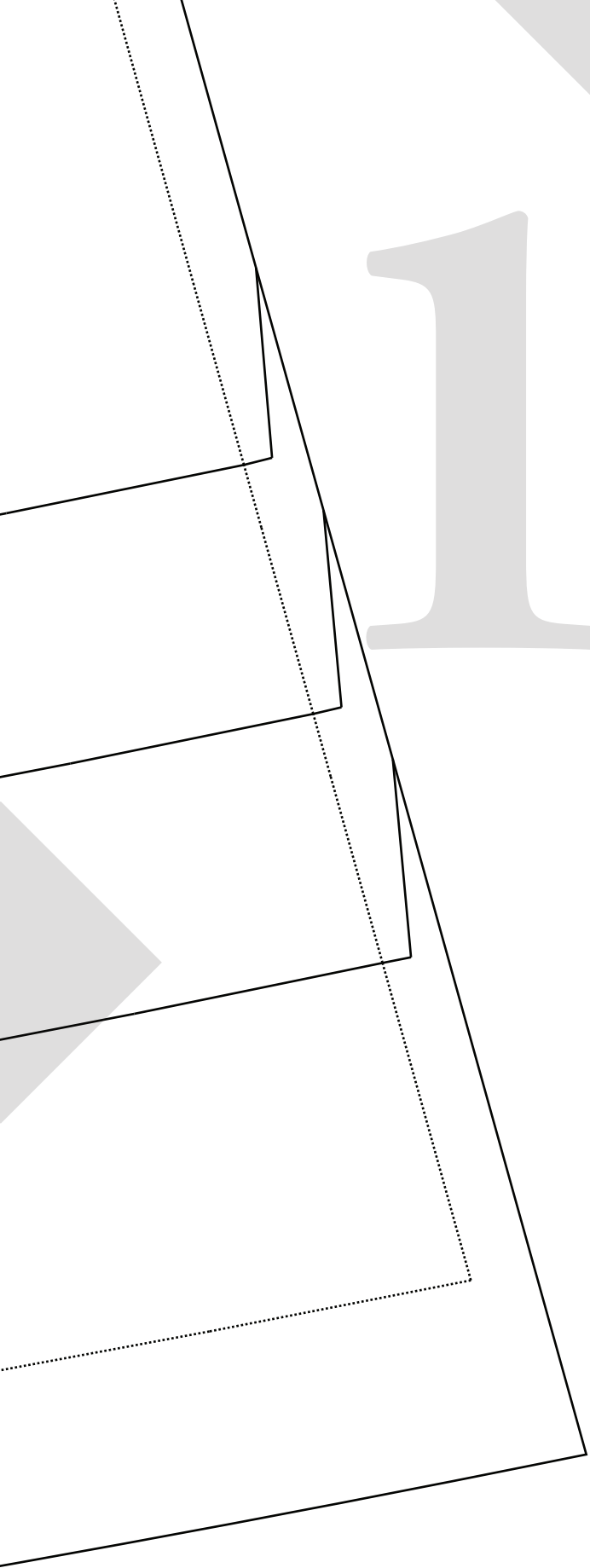
For Height 171cm+

For Height 171cm+ (Extra Long)

14



15



16

ROSSI & FREDY

SIZE 12

CENTRE
FRONT MAIN #2

Deep Square Neckline

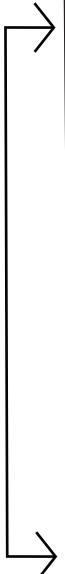
Details:

Connect Pattern Piece to
CFront #1 at notches below.

Once connected:
Refer to CENTRE FRONT #1
for cutting instructions

Seam Allowance included:
1cm (3/8")

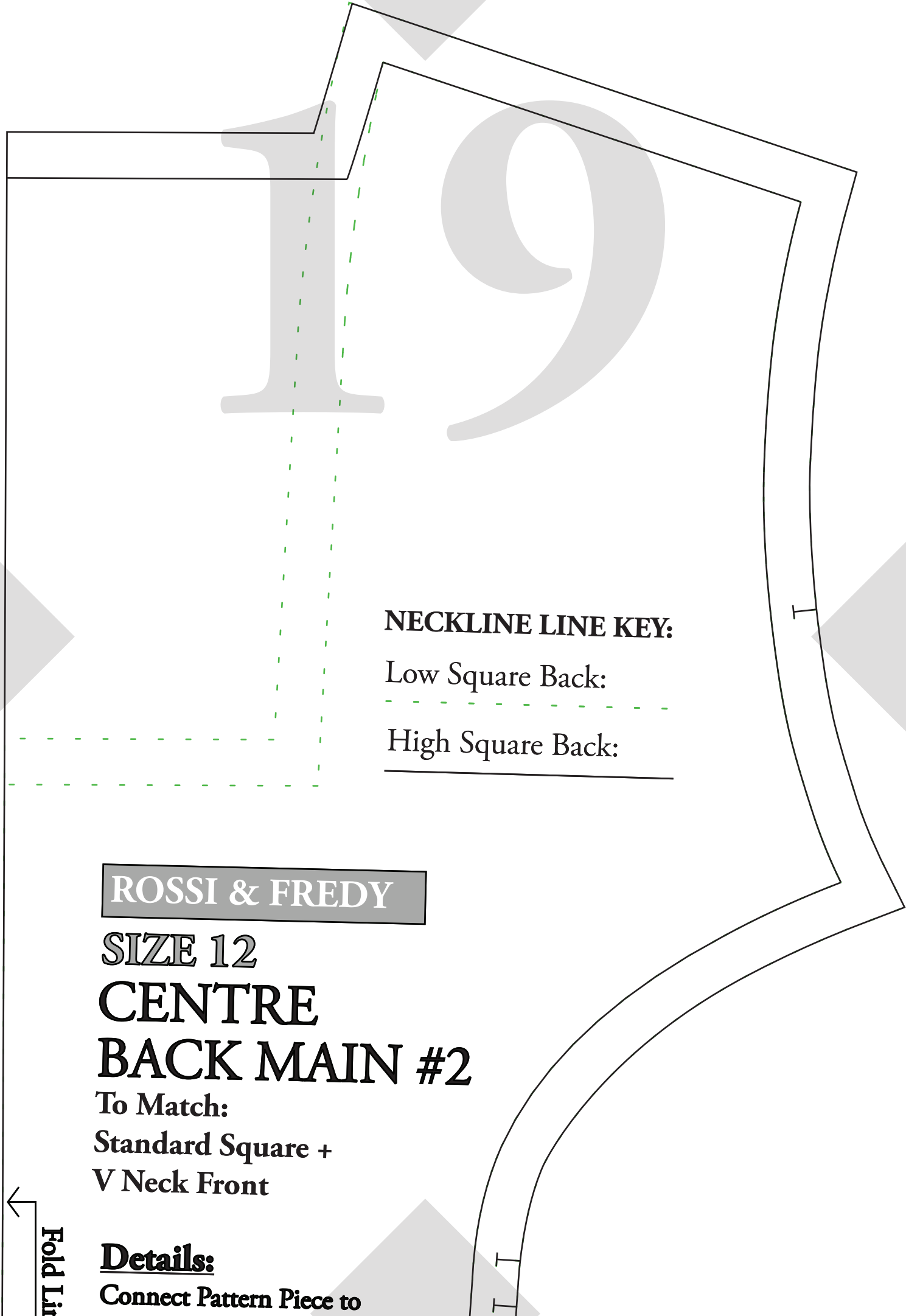
Fold Line / Grain line



17

ROSSI & FREDY

18



NECKLINE LINE KEY:

Low Square Back:

High Square Back:

ROSSI & FREDY

SIZE 12

**CENTRE
BACK MAIN #2**

To Match:
Standard Square +
V Neck Front

←
Fold Line

Details:
Connect Pattern Piece to

ROSSI & FREDY

SIZE 12

CENTRE BACK MAIN #2

Low Square back
To Match:
Deep Square Front

Details:

Connect Pattern Piece to
CBack #1 at notches below.

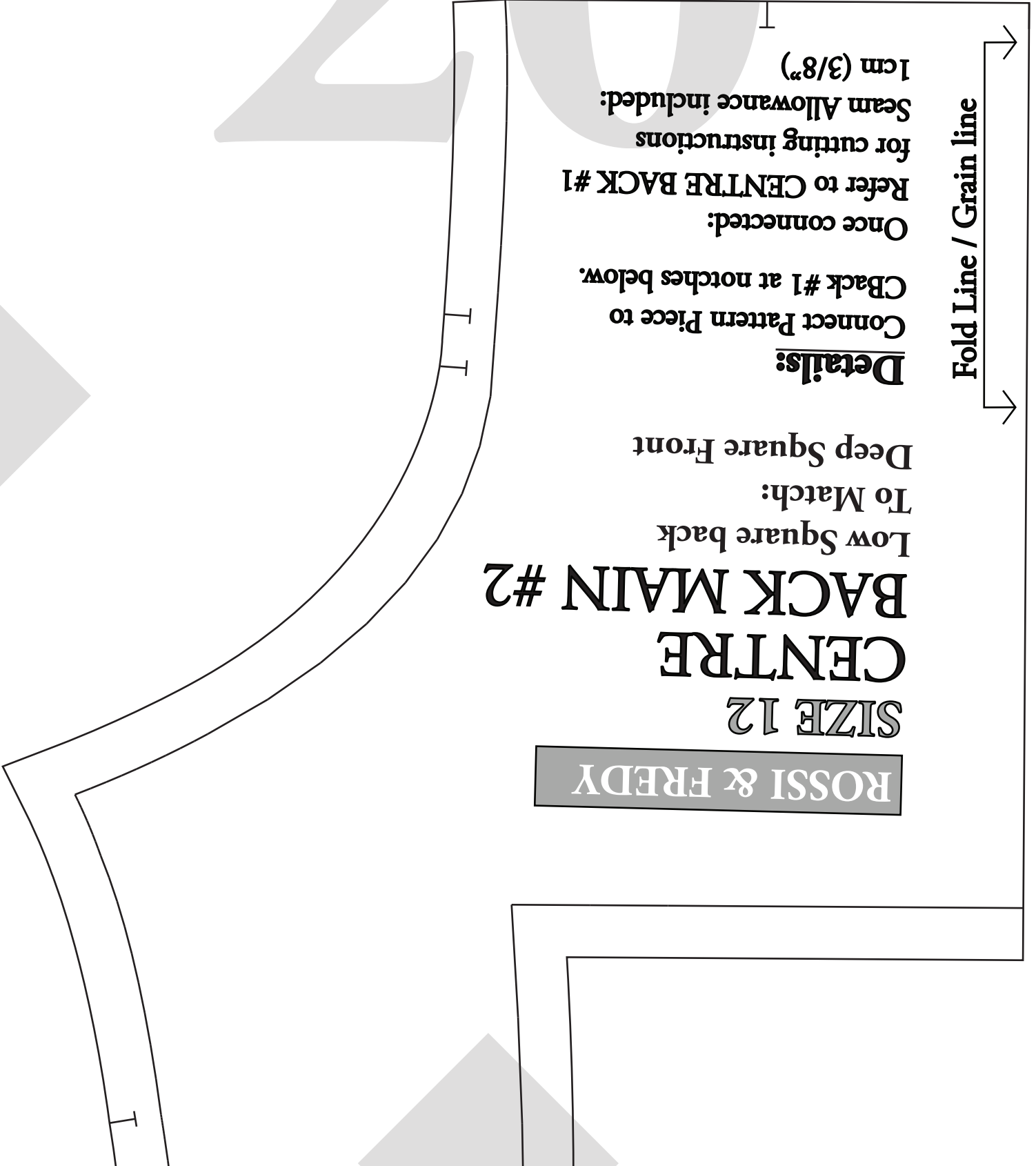
Once connected:

Refer to CENTRE BACK #1

for cutting instructions
Seam Allowance included:
1cm (3/8")

Fold Line / Grain line

TO MATCH DEEP SQUARE BACK BACK BODICE OPTION



SIZE 12

CENTRE FRONT MAIN #1

Details:

Connect Pattern Piece to CF #2
at notches at top of pattern piece

Once connected:

Cut x1 on FOLD

Seam Allowance included: 1cm (3/8")

← Optional Leg
Split notch

SIZE 12

CENTRE BACK MAIN #1

Details:

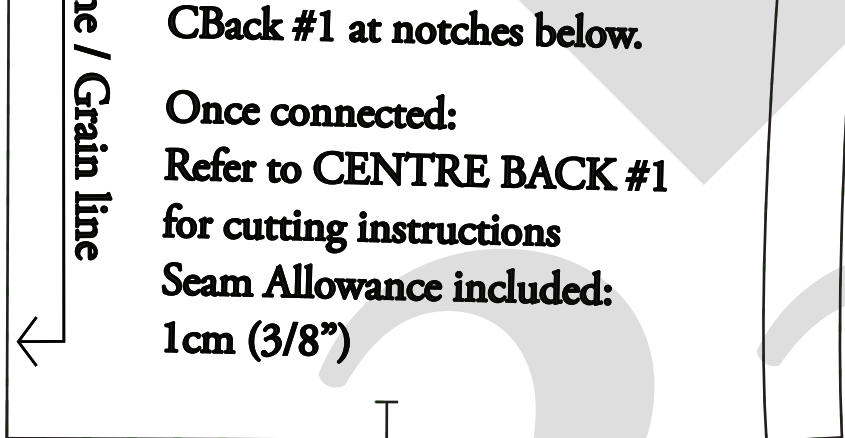
Connect Pattern Piece to CB #2
at notches at top of pattern piece

Once connected:

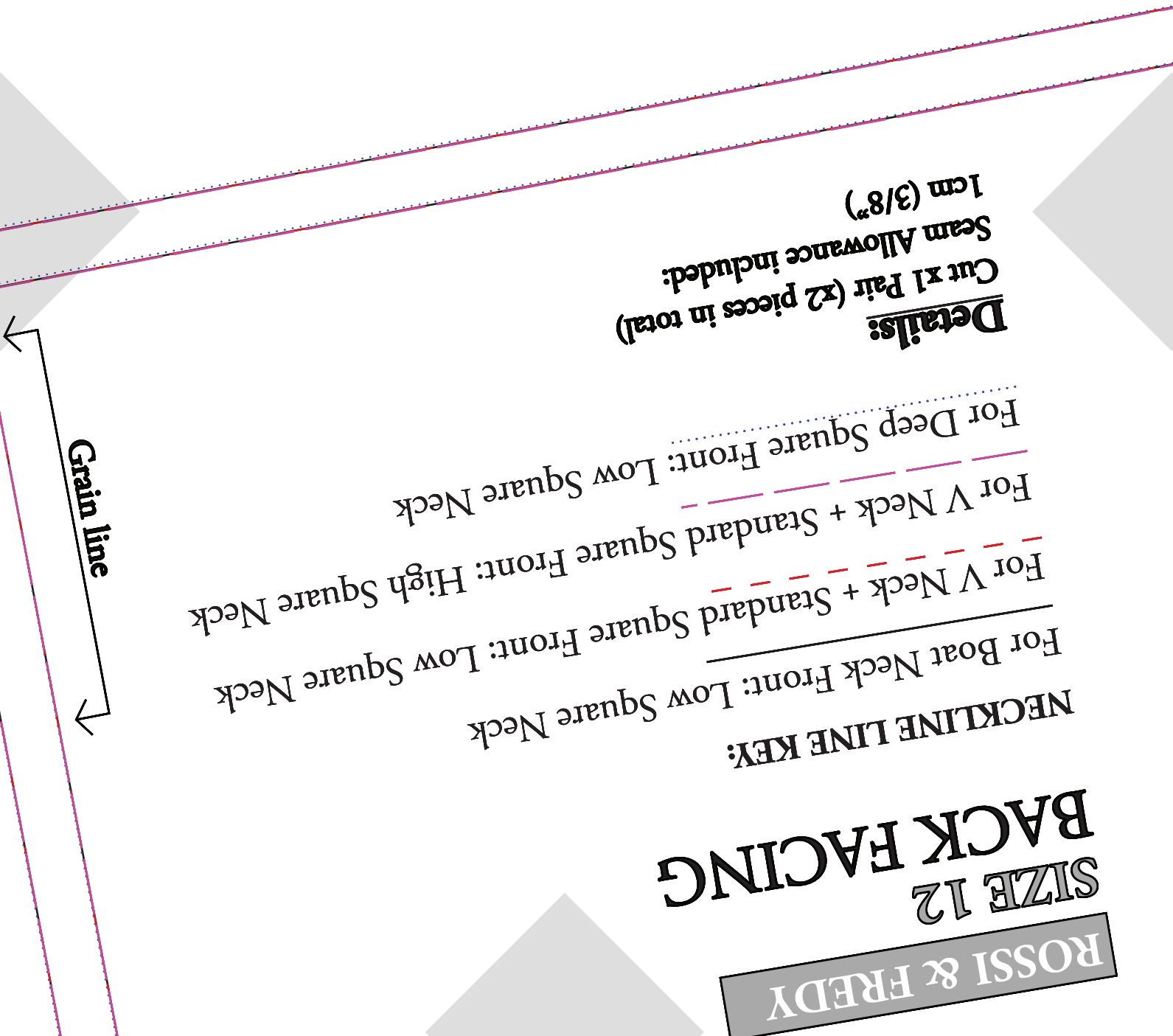
Cut x1 on FOLD

Seam Allowance included: 1cm (3/8")



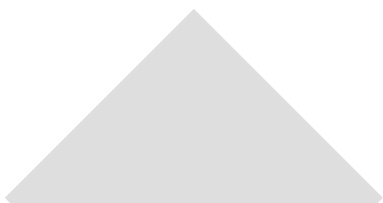
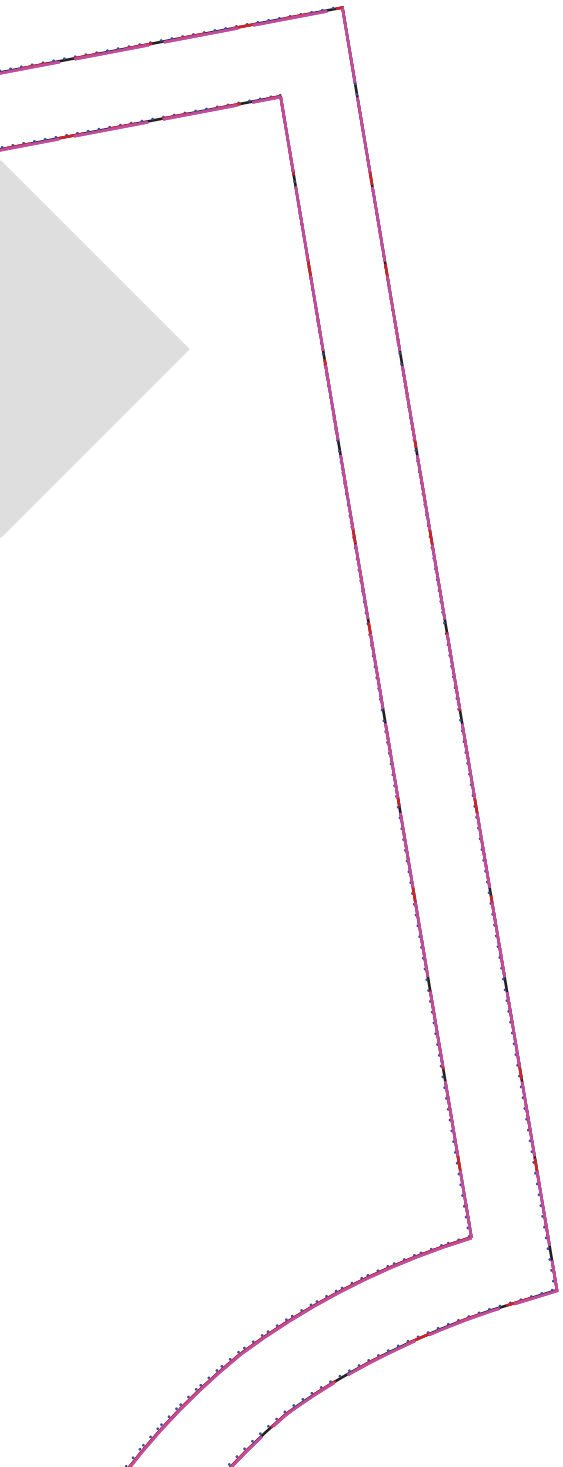
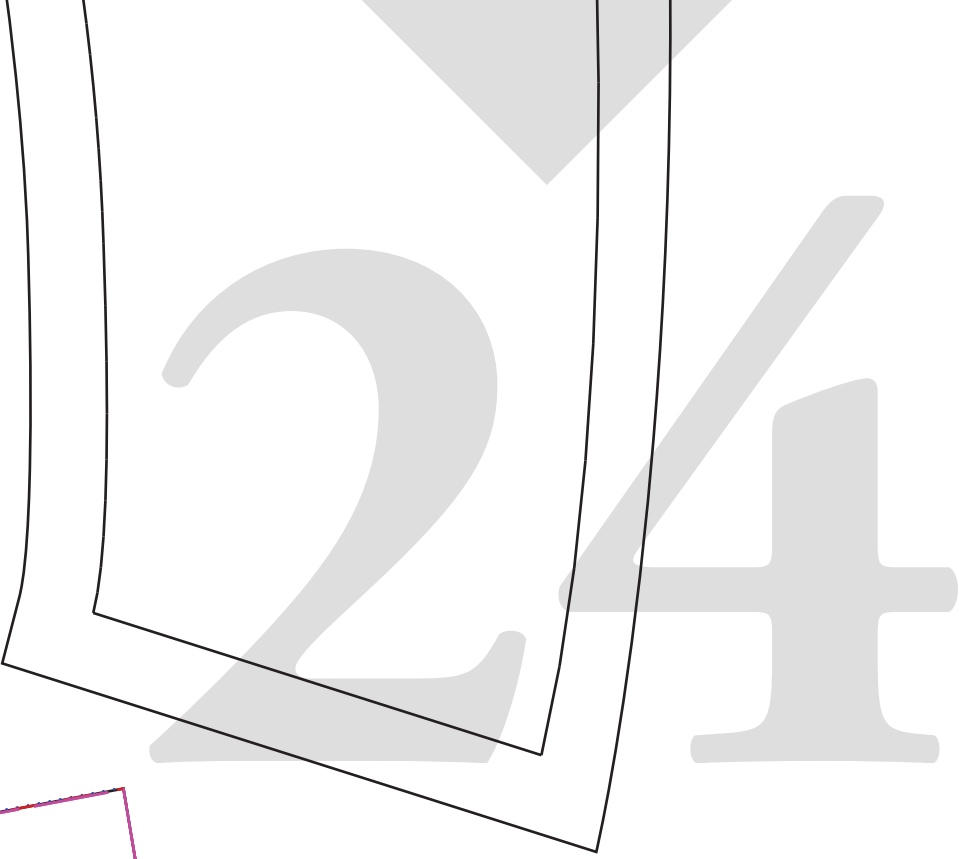


^ TO MATCH STANDARD SQUARE & V NECK FRONT BACK BODICE OPTIONS



**SIZE 12
BACK FACING**

ROSSI & FREDY



25

Fold Line / Grain line

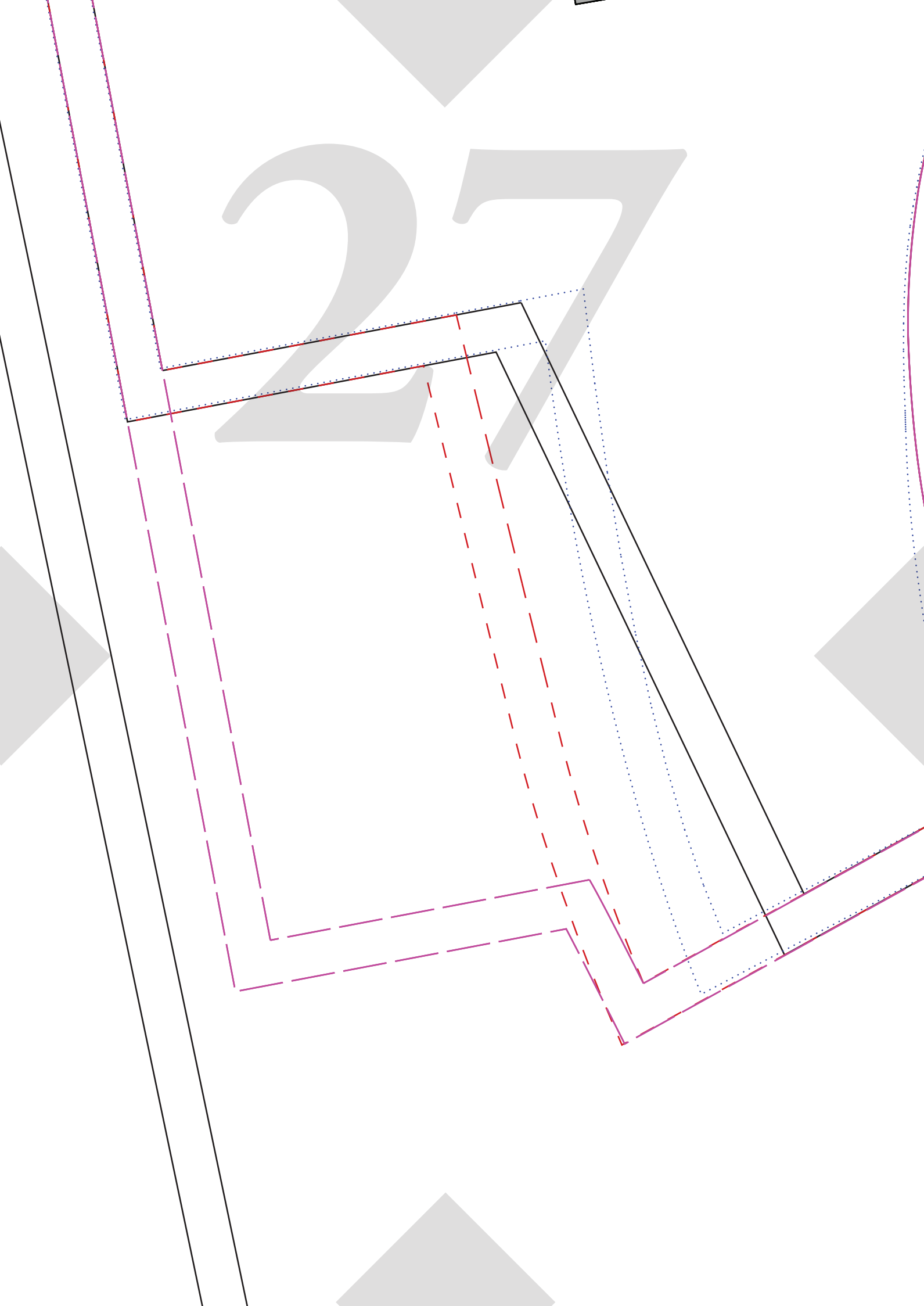


Fold Line / Grain line



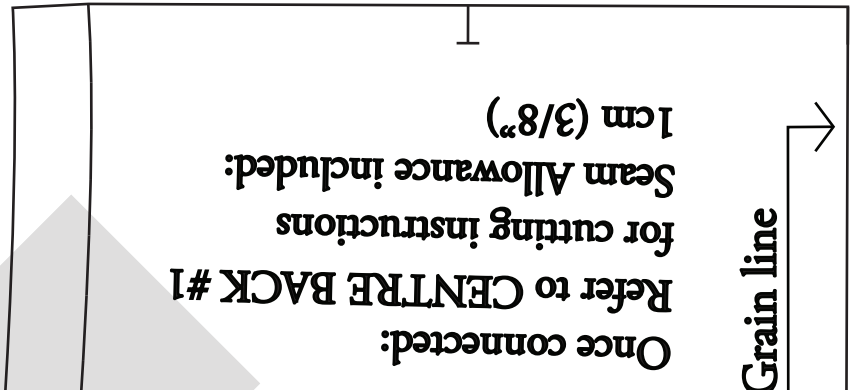
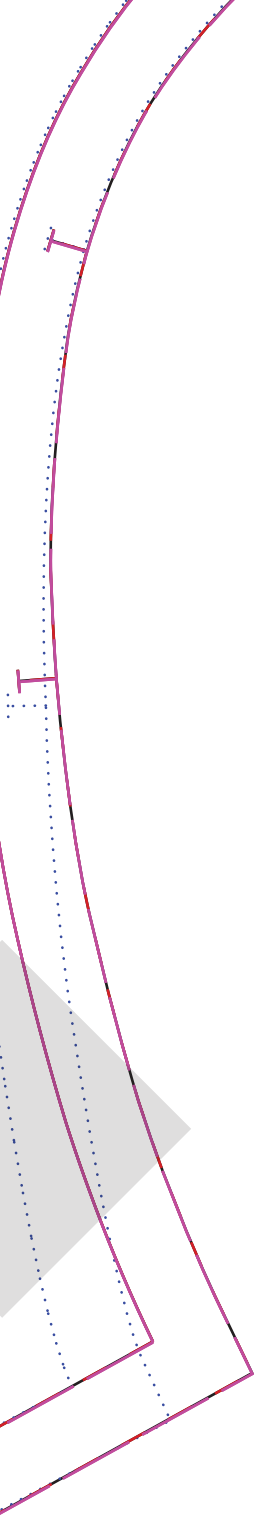
26

27



28

✓ TO MATCH BOAT NECK FRONT BACK BODICE OPTION





29

For Height 150

For Height 160

For Height

For Height 171cm

30

- 160cm

For Height 150 - 160cm

1 - 170cm

For Height 161 - 170cm

ght 171cm +

For Height 171cm+

+ (Extra Long)

For Height 171cm+ (Extra Long)

31

Fold Line / 

Details:
Connect Pattern Piece to
CBack #1 at notches below.

Boat Neck Front

To Match:

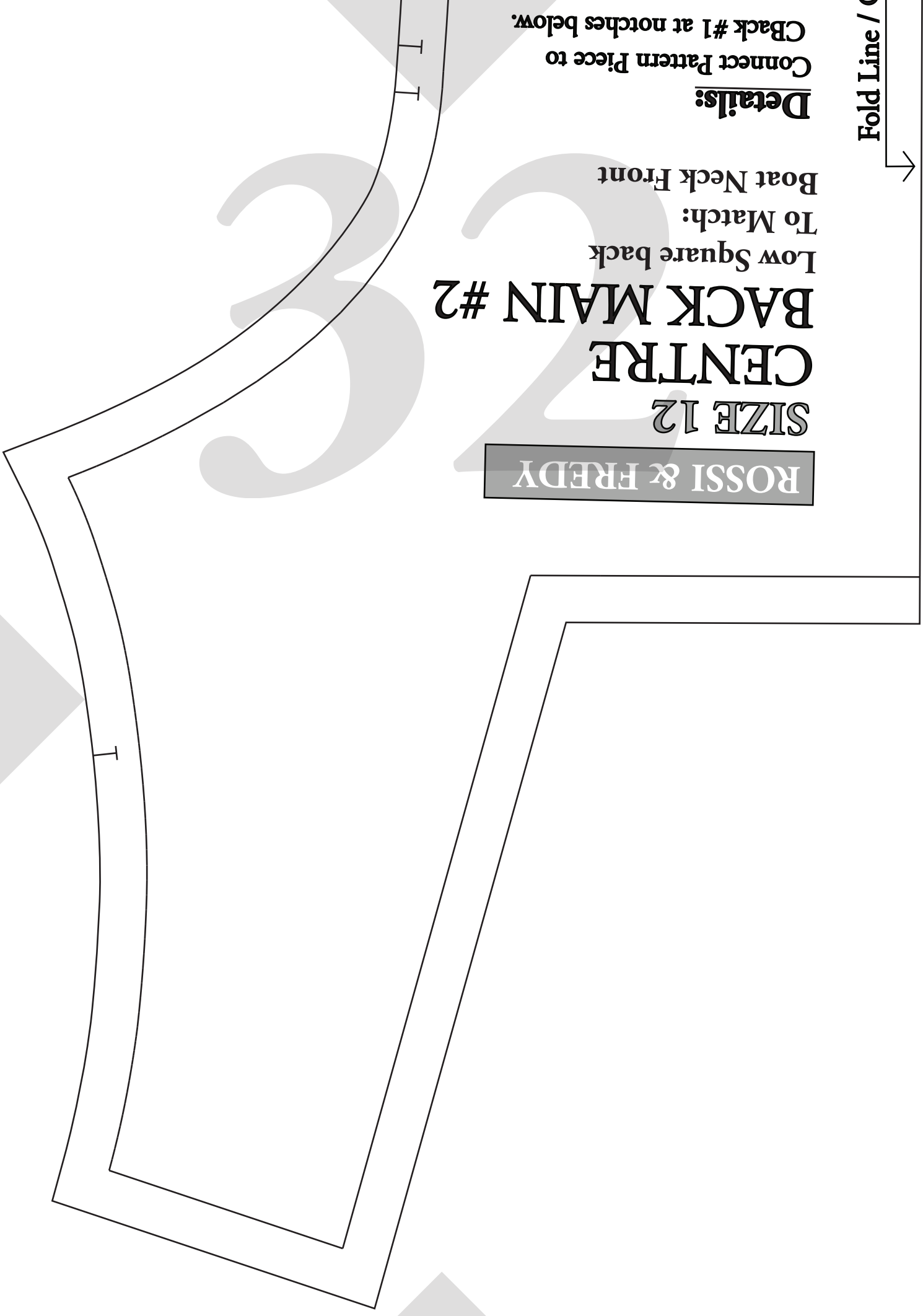
Low Square back

BACK MAIN #2

CENTRE

SIZE 12

ROSSI & FREDY



I I

I

I

I

33

3

ROSSI & FR

SIZE 12

SHORT PUFF
SLEEVE CUFF

Fold Line

Grain Line

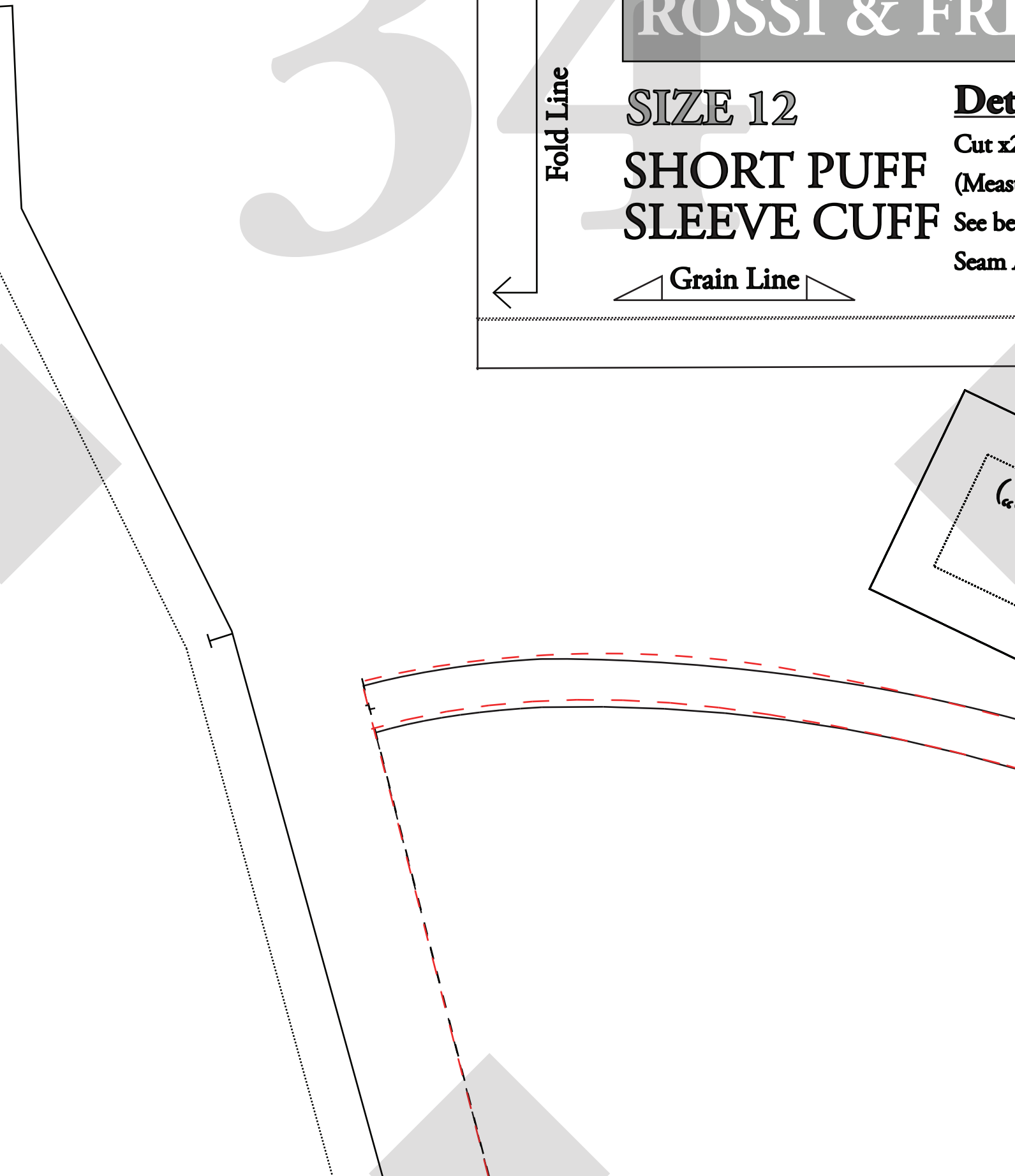
Det

Cut x2

(Meas

See be

Seam



EDY

ails:

2 on Fold

ure upper arm to compare
(beginning of sewing instructions)

Allowance included: 1cm (3/8")

Seam Allowance: 1cm (3/8")
Cut x 2
Details:

CK TIE

ROSSI & FREDY

POCKET BAG

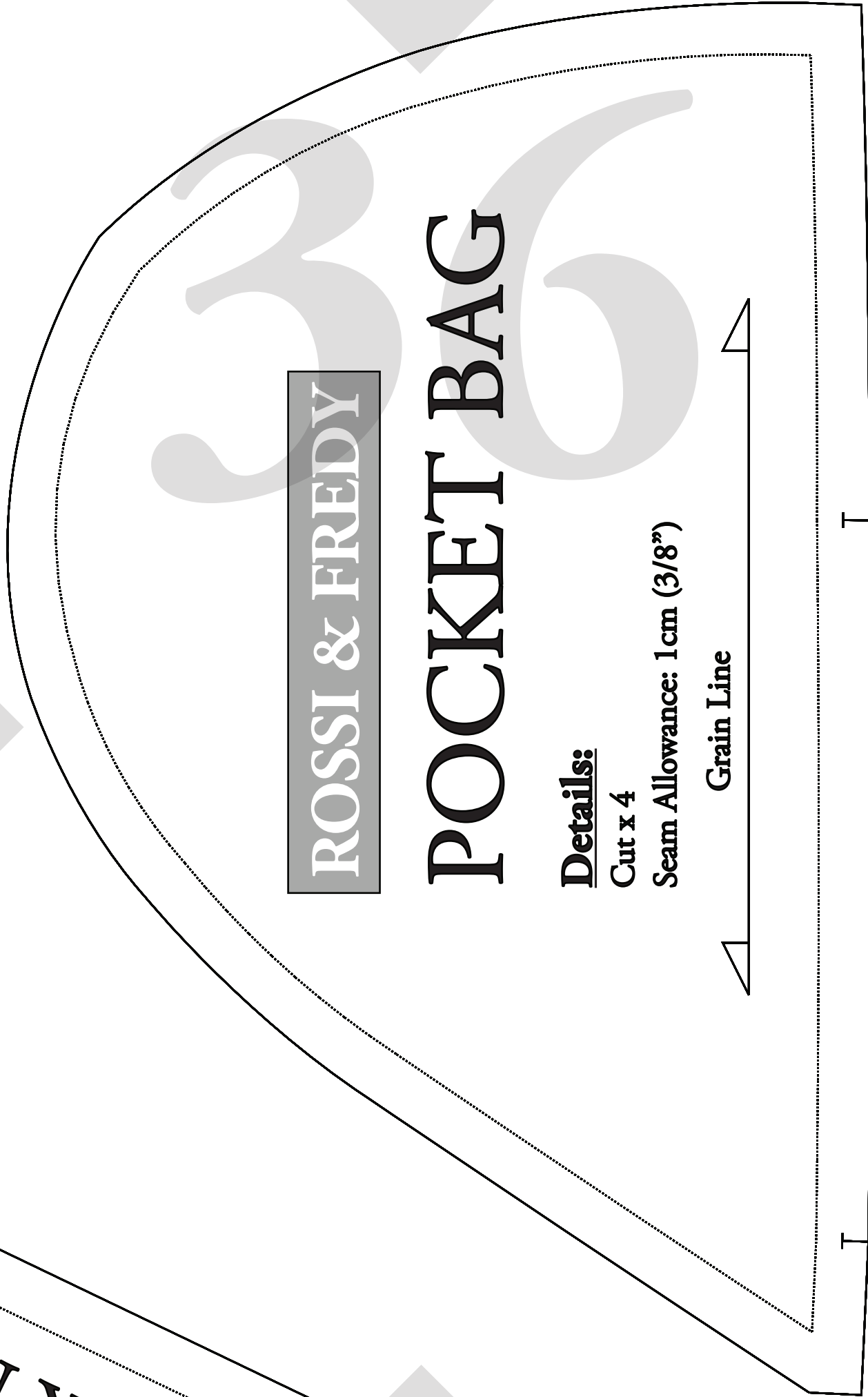
Details:

Cut x 4

Seam Allowance: 1cm (3/8")

Grain Line

BACK NECK



ROSSI & FREDY

SIZE 12

SIDE BACK #1

Details:

**Connect Pattern Piece to #2
at notches at top of pattern piece**

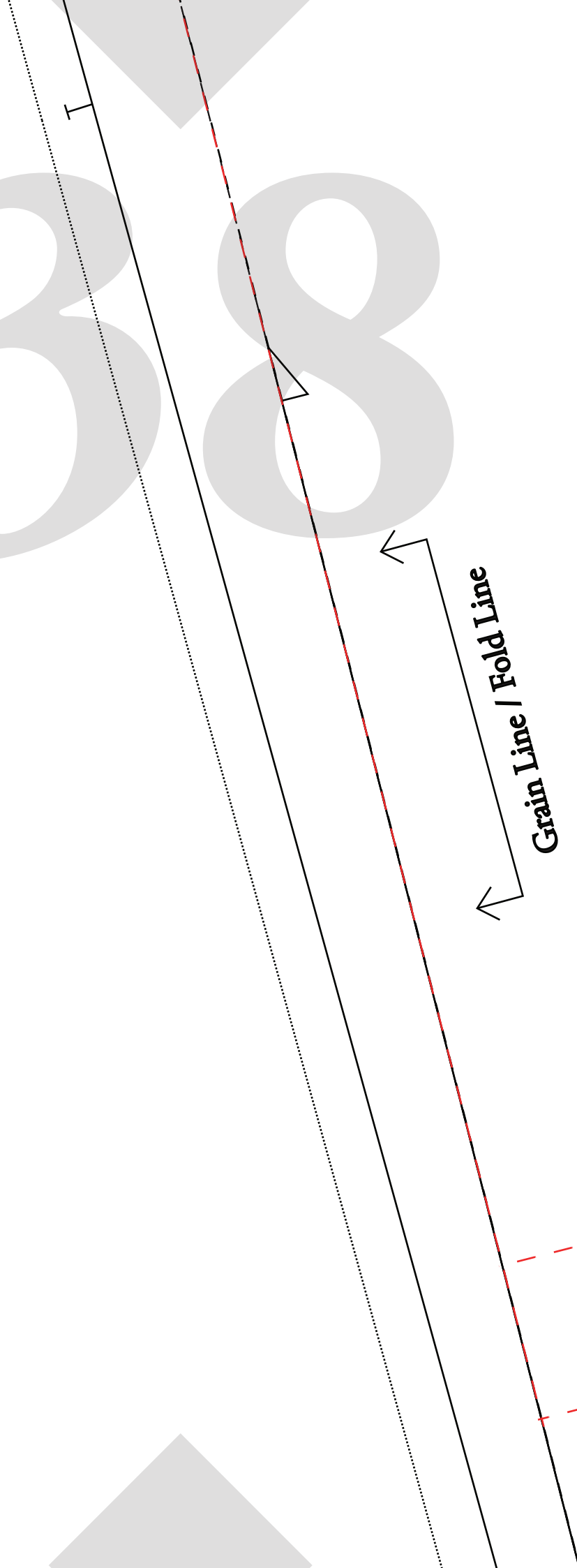
Once connected:

Cut x 1 Pair (2 pieces all up)

Seam Allowance included: 1cm (3/8")

38

at & FREDY



ROSSI &

SIZE 12

SHORT PUFF SLEEVE

Details:

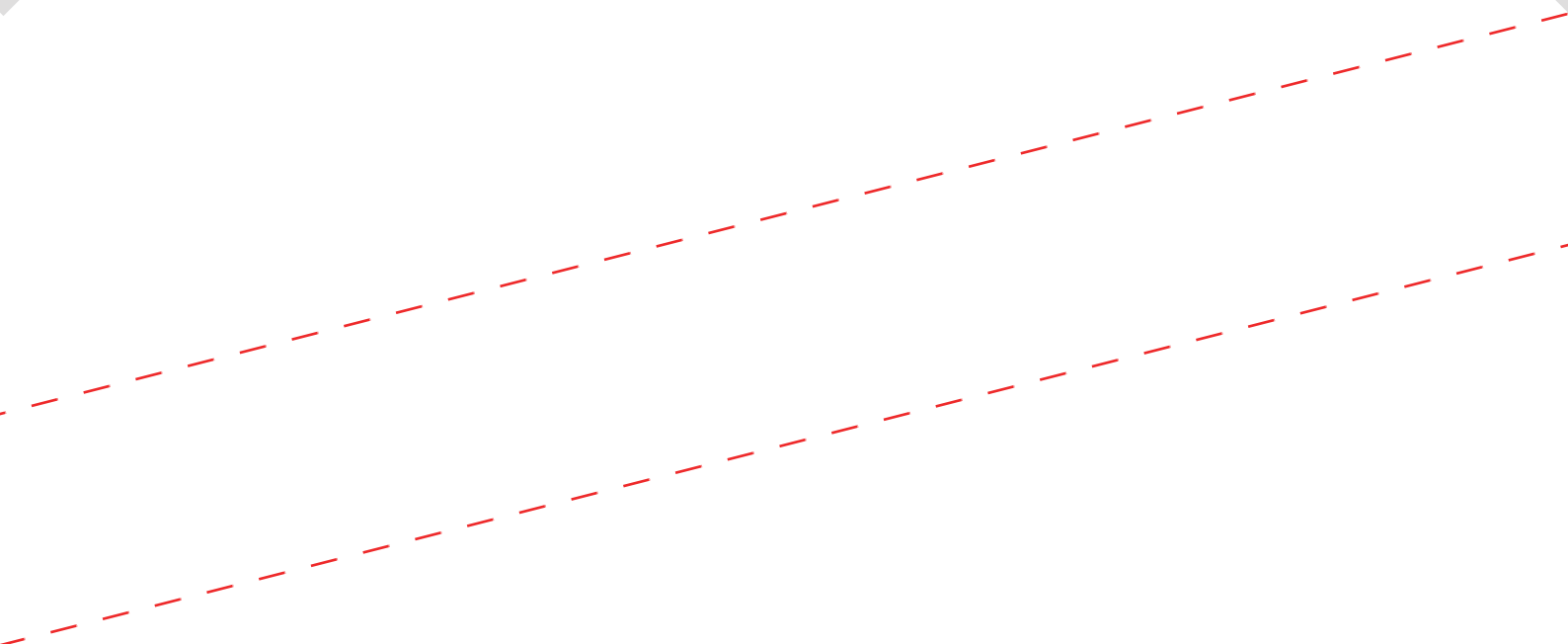
Cut x 2 on fold

Seam Allowance included: 1cm (3/8")

Seam Allowance included: 1cm (3/8")

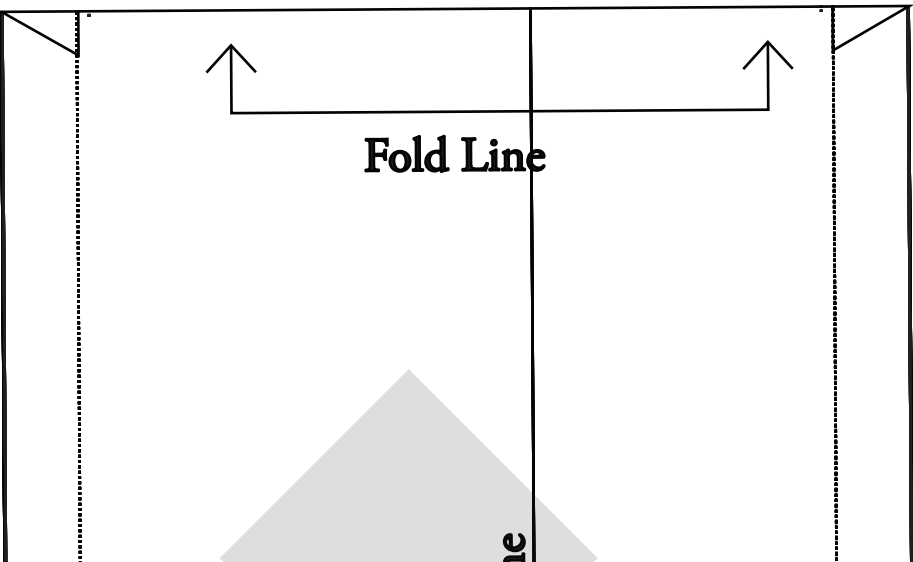
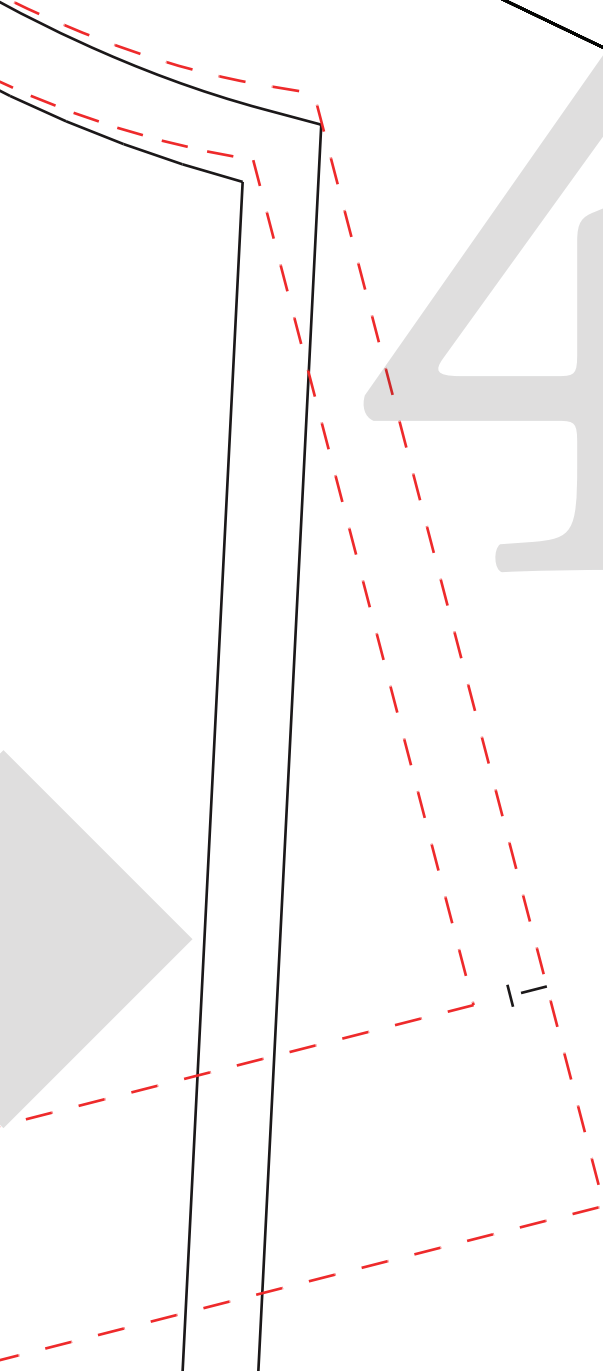
LINE KEY

SHORT PUFF SLEEVE:

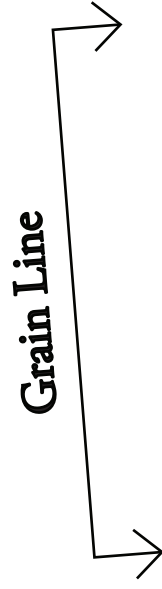


ROSSI & FREDY

40



41



42



Grain Line / Fold Line

ROSSI & FREDY

SIZE 12
LONG SHIRRED
SLEEVE

Details:

Cut x 2 on fold

Seam Allowance included: 1 cm (3/8")

LINE KEY

LONG SHIRRED:

ROSSI & FREDY

SCRUNCHIE

Details:

Cut x 1 on fold

Seam Allowance included: 1cm (3/8")

ROSSI & FREDY

SCRUNCHIE

Details:

Cut x 1 on fold

Seam Allowance included: 1cm (3/8")

Grain Line

A large, light grey number '45' is centered at the top of the page. The number is composed of two digits, '4' and '5', in a bold, sans-serif font. The '4' has a vertical stem and a horizontal crossbar. The '5' has a vertical stem, a horizontal crossbar, and a curved bottom. The number is positioned above a dotted line that runs horizontally across the page.

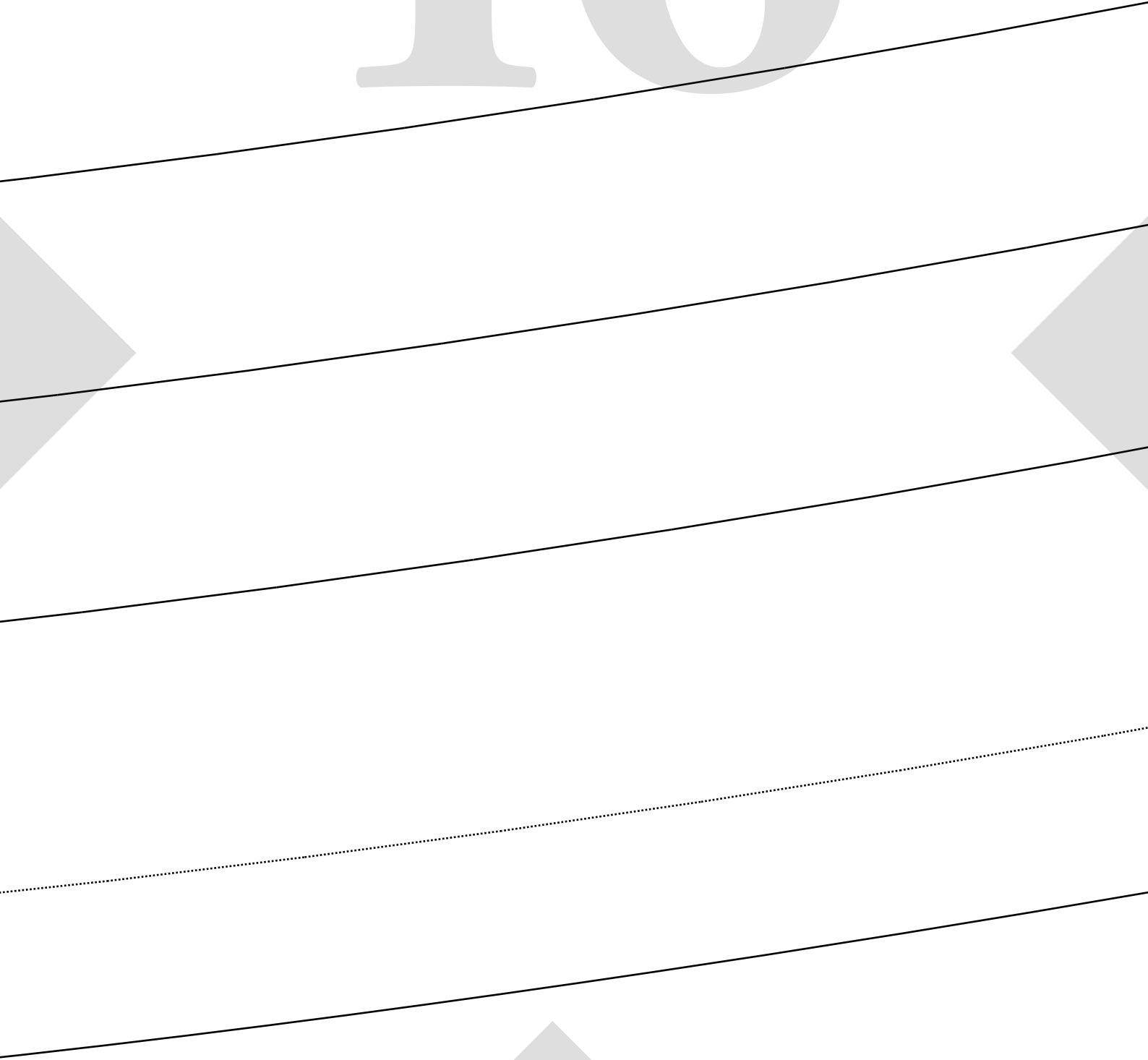
For Height 150 - 160cm

For Height 161 - 170cm

For Height 171cm+

For Height 171cm+ (Extra Long)

46



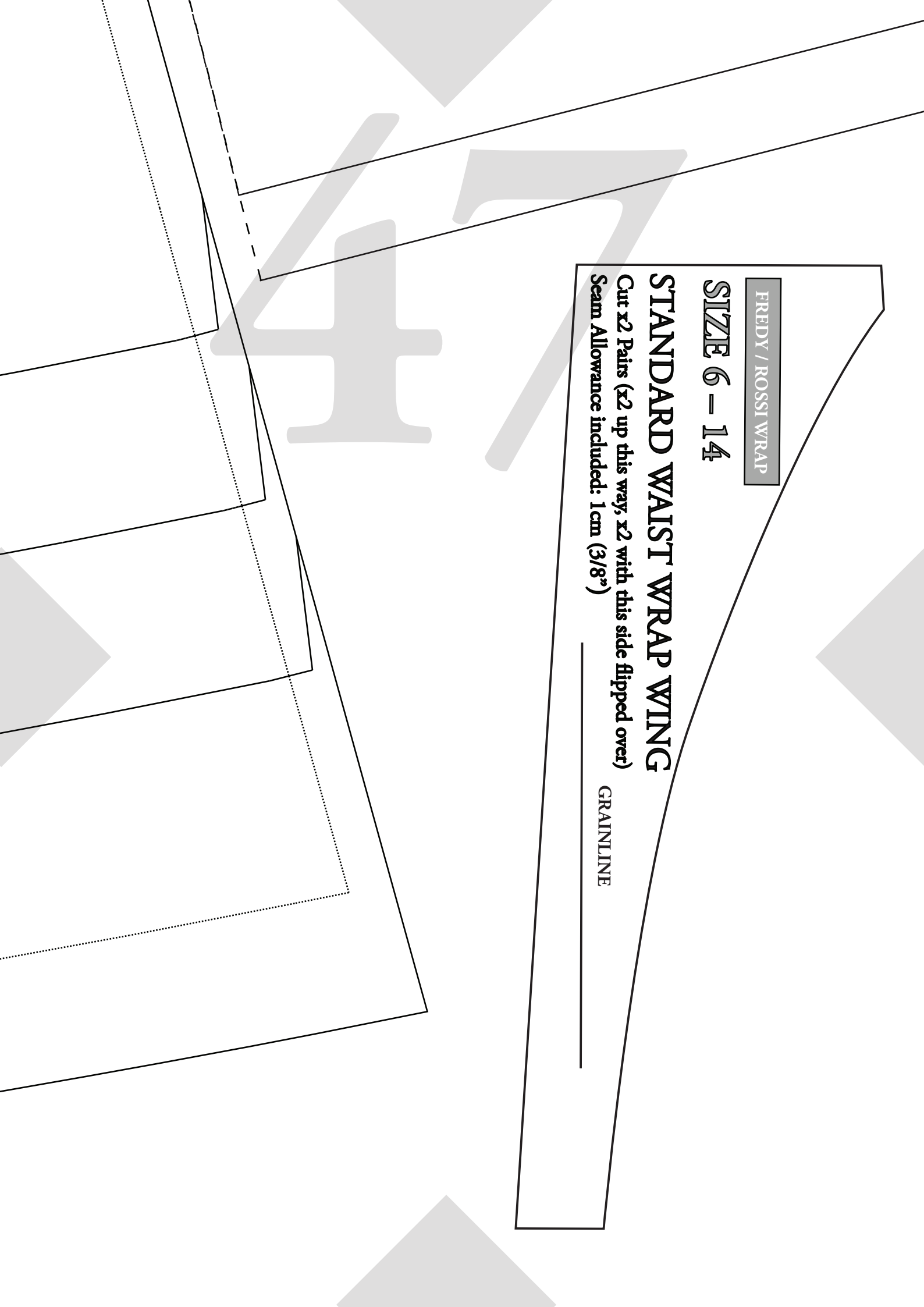
FREDY / ROSSI WRAP

SIZE 6 - 14

STANDARD WAIST WRAP WING

Cut x2 Pairs (x2 up this way, x2 with this side flipped over)
Seam Allowance included: 1cm (3/8")

GRAINLINE



ROSSI &

HEAD

Details:

Cut x 1 on fold. Inc

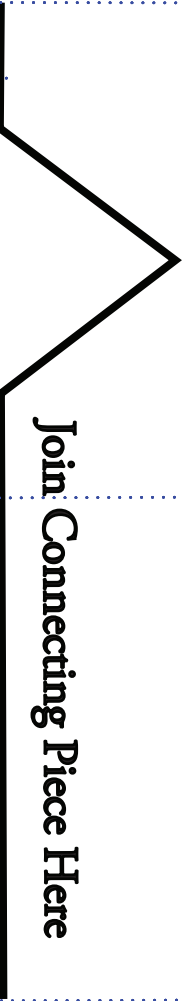
Seam Allowance inc

Once connected:
Refer to SIDE BACK #1 for cutting
instructions
Seam Allowance included: 1cm (3/8")

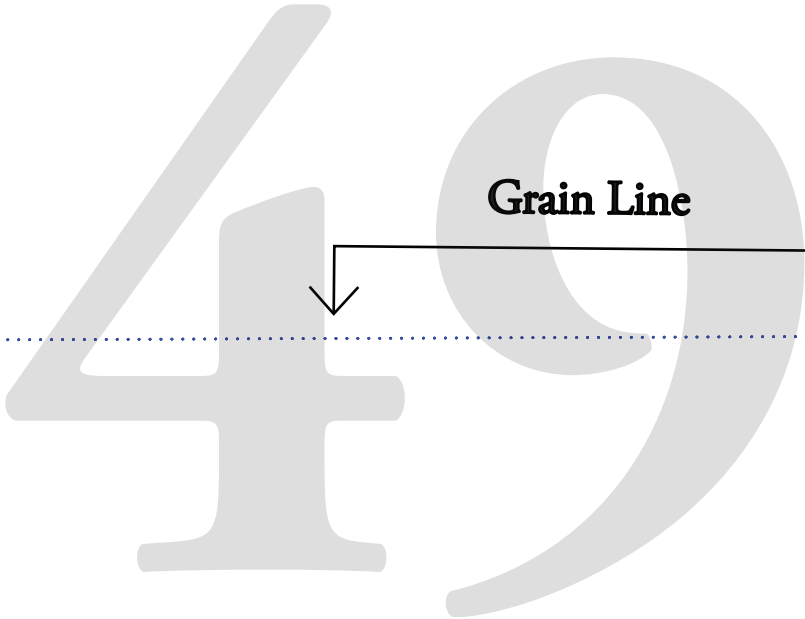
Details:
Connect Pattern Piece to Back #1
at notches below.

SIDE BACK #2
SIZE 12

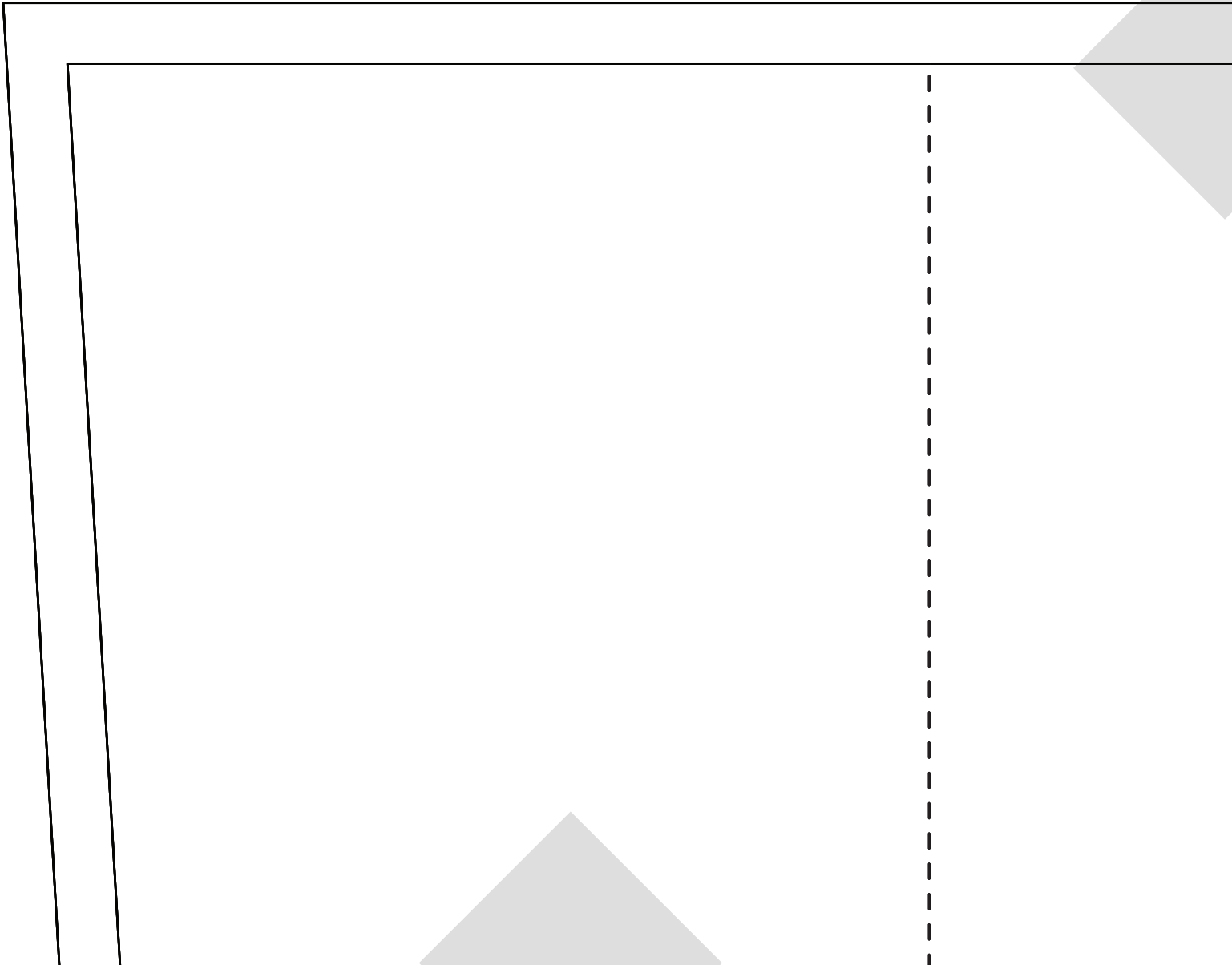
Grain Line



Join Connecting Piece Here



Grain Line



SIZE 6 - 14

TWO TONE WAIST WRAP

#2

Details:

Connect Pattern Piece to #1

See Wrap #1 once connected

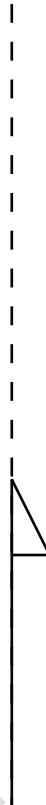
for cutting instructions

Seam Allowance included: 1 cm (3/8")

51

52

Join Connecting Piece Here



53

Grain Line / Fold Line

ROSSI & FREDY

SIZE 6 - 14

STANDARD

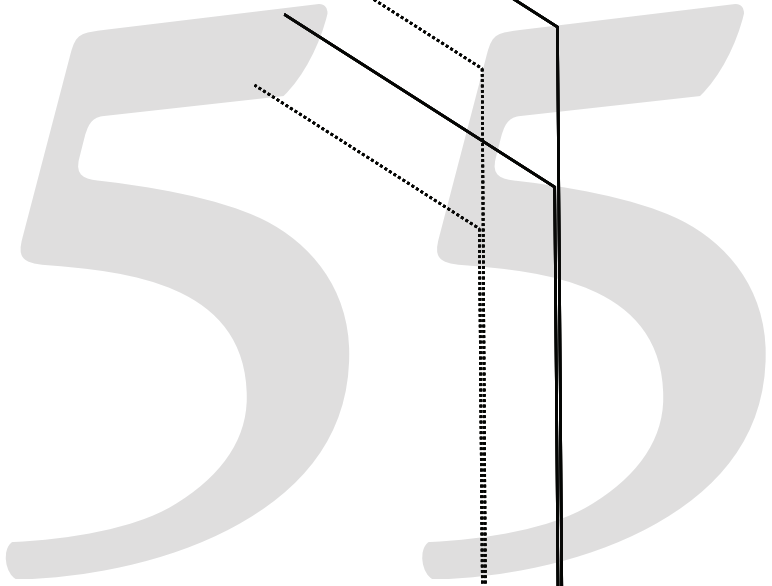
THU

54

ROSSI & FRE

SIZE 6 - 14

STANDARD



Grain Line / Fold Line

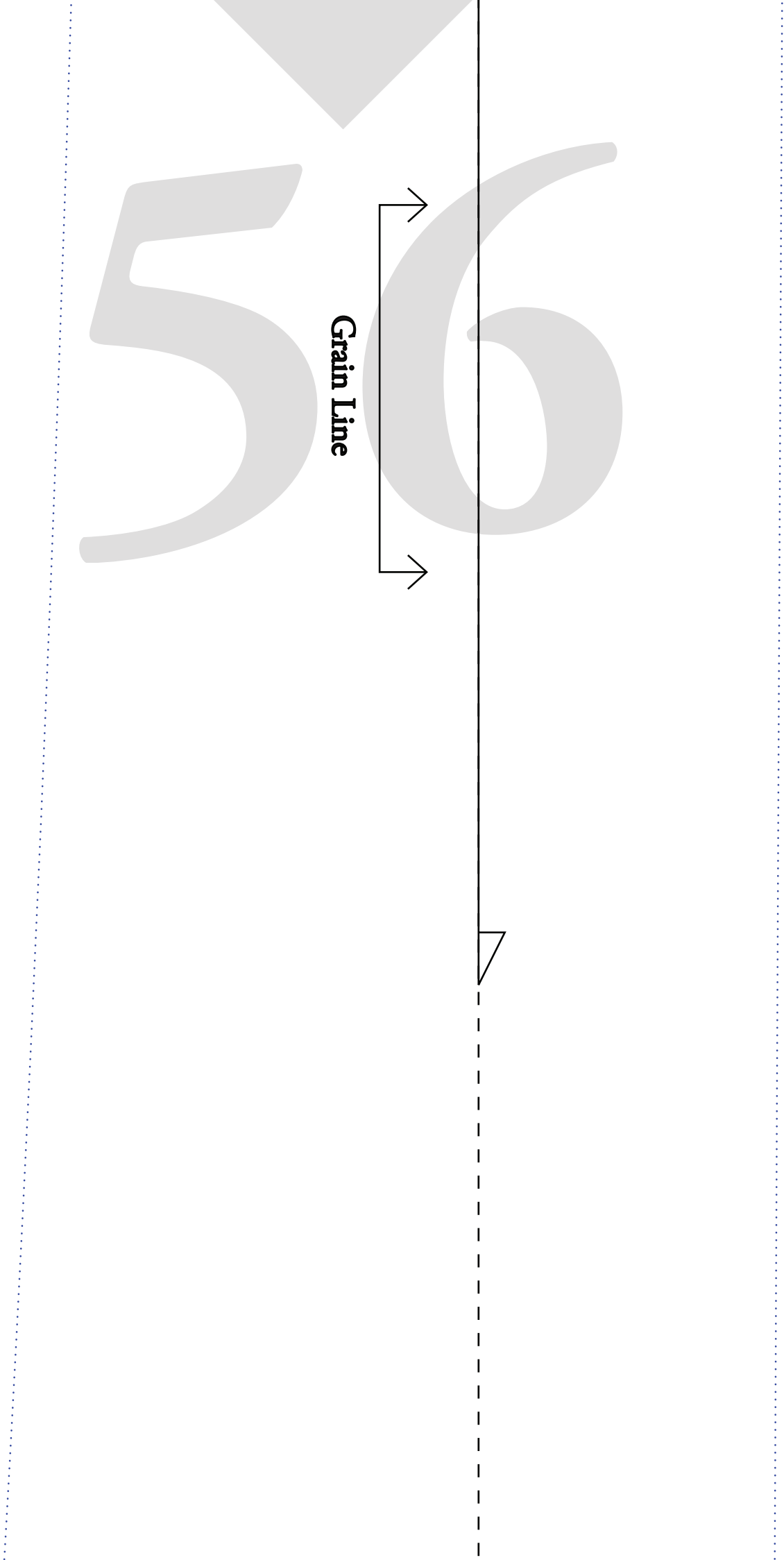


RDY

RD, THIN

56

Grain Line



STANDARD + TH WAIST WRAP #1

Details:

Connect Pattern Piece to #2

Once connected:

Cut x 2

Seam Allowance included: 1cm (3/8")



Join Connecting Piece Here

IN

STANDARD WAIST W

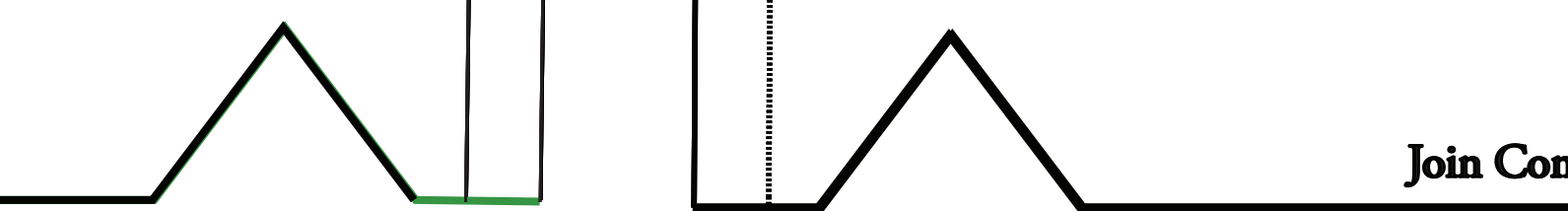
58

Details:

Connect Pattern Piece to #1

See Wrap #1 once connected for c

Seam Allowance included: 1cm (3



Join Con

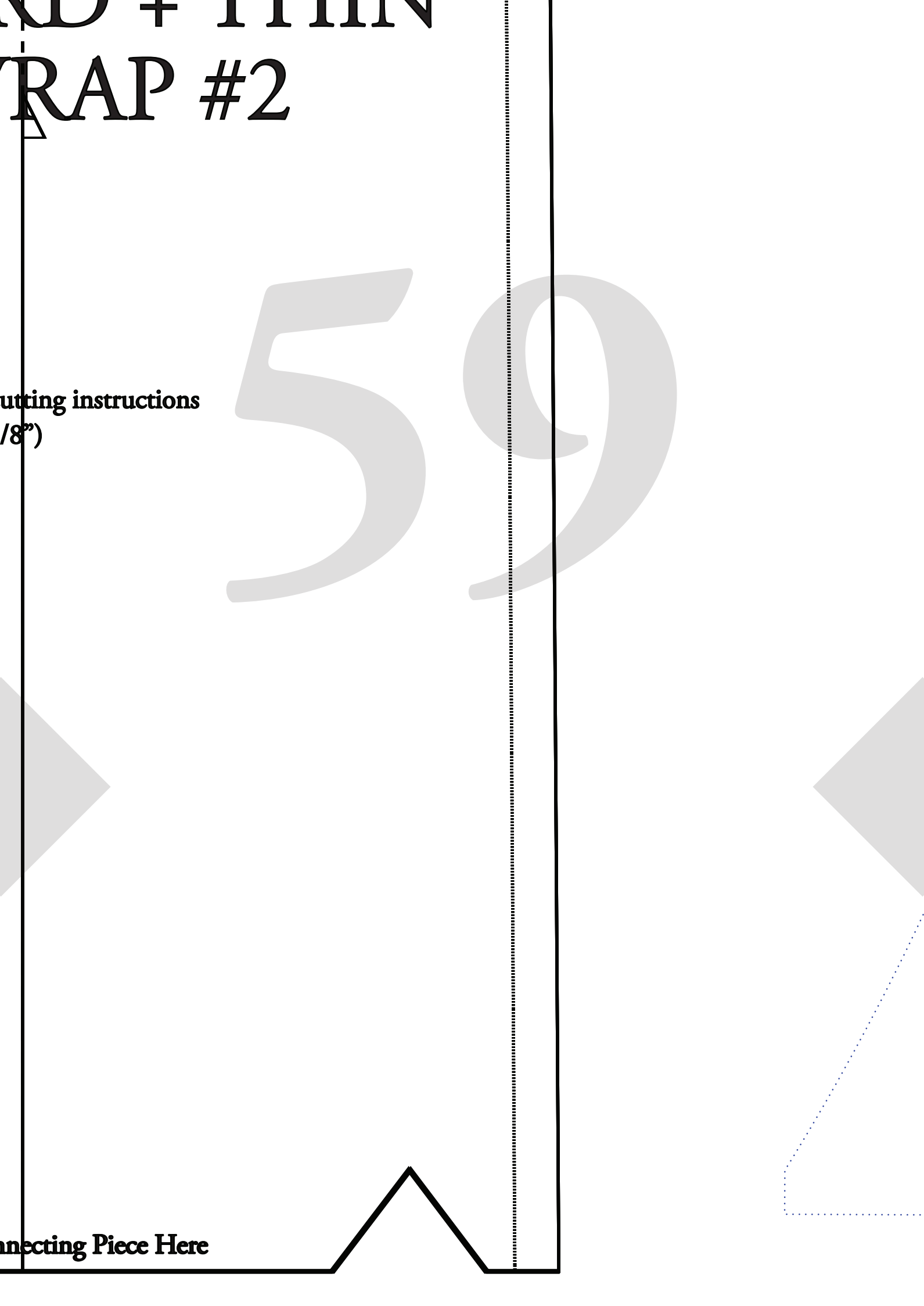
WOOD + THIN

TRAP #2

Cutting instructions
(1/8")

50

Connecting Piece Here



ROSSI & FREDY

SIZE 6 – 14

TWO TONE WAIST WRAP #1

Details:

Connect Pattern Piece to #2

Once Connected :

Cut x 2 in Primary Colour (one pair)

Cut x 2 in Secondary Colour (one pair)

Seam Allowance included: 1cm (3/8")