

# A4 PRINTING INSTRUCTIONS

Before you get started on creating your Rossi of Fredy Wrap, make sure to read the below notes so that you can make sure your printer is calibrated and prints the patterns to the correct size.

Before you begin, please make sure you are printing on A4 paper with an A4 printer, not letter paper as the small difference in the paper size can mean your patterns don't print correct. A4 measures 210 x 297mm

## 1. Select Layers / styles:

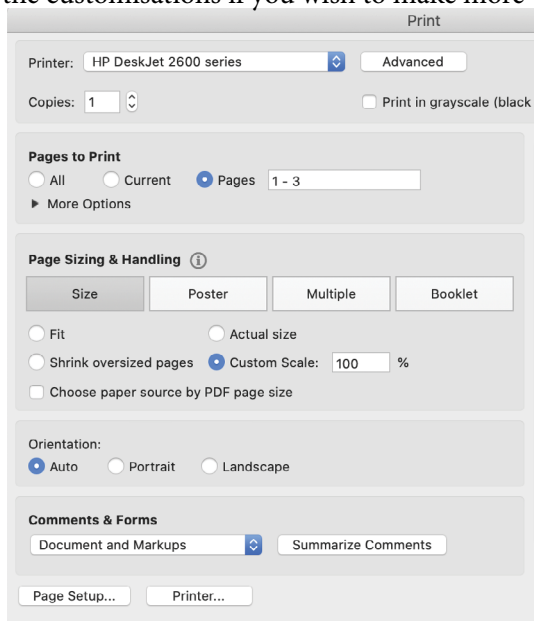
Make sure you have gone through the PDF and selected all necessary layers + Customisations that you need for your Rossi / Fredy Wrap in instructions. You can print out all the customisations if you wish to make more variations in future.

## 2. Print the first three pages as a test print:

We strongly suggest printing the first three pages as a test to make sure everything is set up correctly, to save time, paper and the environment.

When printing in Adobe Acrobat, do as follows:

- File > Print
- Select your printer
- Click 'Pages' and then type '1 - 3' (for test print)
- Click 'Custom Scale' and type '100%'
- Click 'PRINT'

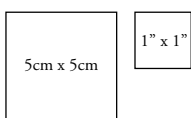


## 3. Calibrate and measure

When printing, although you would've selected '100%', most common household printers will print with a white border. Don't worry, this won't affect measurements and you **SHOULD NOT** trim the borders. However, to check this is correct for your printer – we have provided two tests of calibration squares.

### 3a: Single Square Calibration

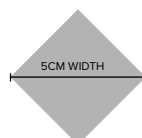
On the first pattern page, you will see a 5x5cm square and a 1"x1" square. Using your ruler, measure these squares to make sure they (along with your patterns) have printed to the correct scale.



*Note: These calibration squares are an example only and are not printed to scale.*

### 3b: Across-Page Diamond Calibration

You will then see a grey diamond split across the first two pattern pages (similar to the below example). Simply measure from one corner of the diamond to the other corner. This should measure 5cm from left point to right point.



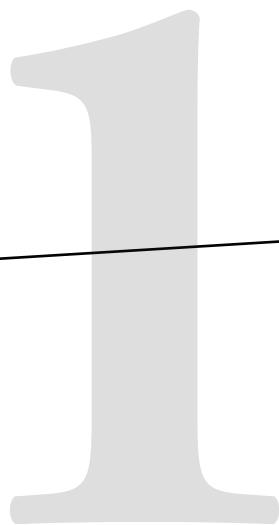
*Note: This diamond is an example only and is not printed to scale.*

## 4. You're all set and ready to go!

Once you have successfully tested and printed the first couple of pages, and double-checked the calibration as per steps 3a and 3b, you're all set to go!

5cm x 5cm

1" x 1"



**ROSSI & FREDY**

**SIZE 10**

# **SIDE FRONT #1**

**Details:**

**Connect Pattern Piece to #2  
at notches at top of pattern piece.**

**Once connected:**

**Cut x 1 Pair (2 pieces all up)**

**Seam Allowance included: 1cm (3/8")**

5CM WIDTH

Grain Line

ROSSI & FREDY

SIZE 10

SIDE FRONT #2

**Details:**  
Connect Pattern Piece to front #1  
at notches below.

Once connected:  
Refer to SIDE FRONT #1 for cutting  
instructions  
Seam Allowance included: 1cm (3/8")

I



**ROSSI & FREDY**

**SIZE 10**

**CENTRE  
FRONT MAIN #2**

**Details:**

**Connect Pattern Piece to  
CFront #1 at notches below.**

**Once connected:  
Refer to CENTRE FRONT #1  
for cutting instructions  
Seam Allowance included: 1cm (3/8")**

t h e b o l d o n e

## Fredy Wrap + Rossi Wrap – Size 10

© The Bold One Workshop Patterns.  
These patterns are copyrighted by  
The Bold One Patterns and may not  
be copied, shared, or resold.

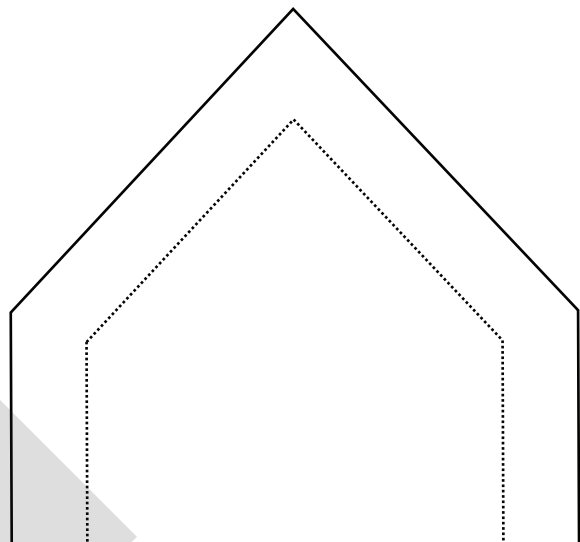
Reproducing this pattern to sell items  
commercially is prohibited.

Seam allowance = 1cm (3/8")

Use the following boxes to check  
pattern has been printed to correct scale.

5cm x 5cm

1" x 1"

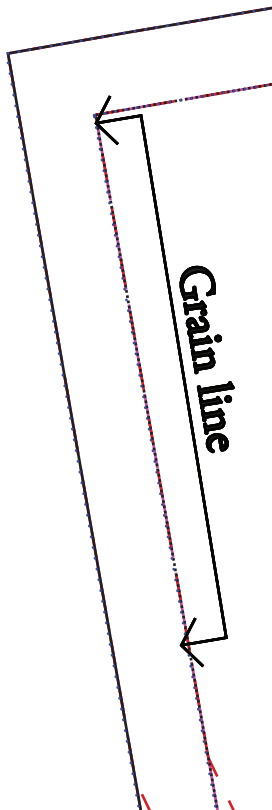
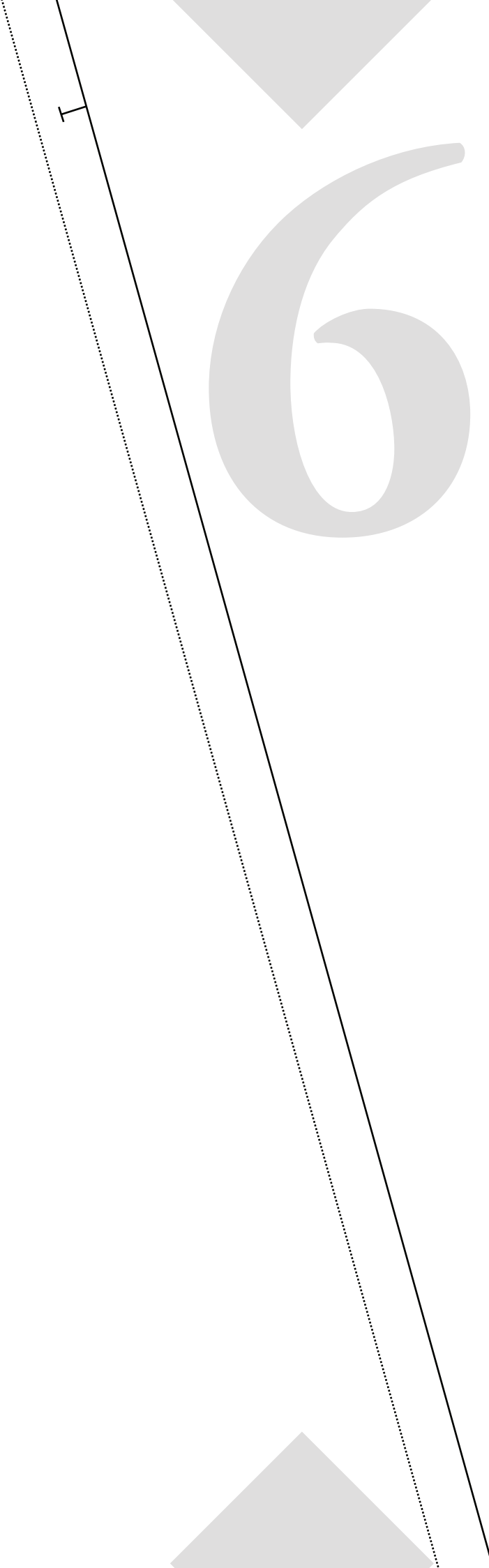


5

← **Optional Leg  
Split notch**



6



**NECKLINE LINE KEY:**

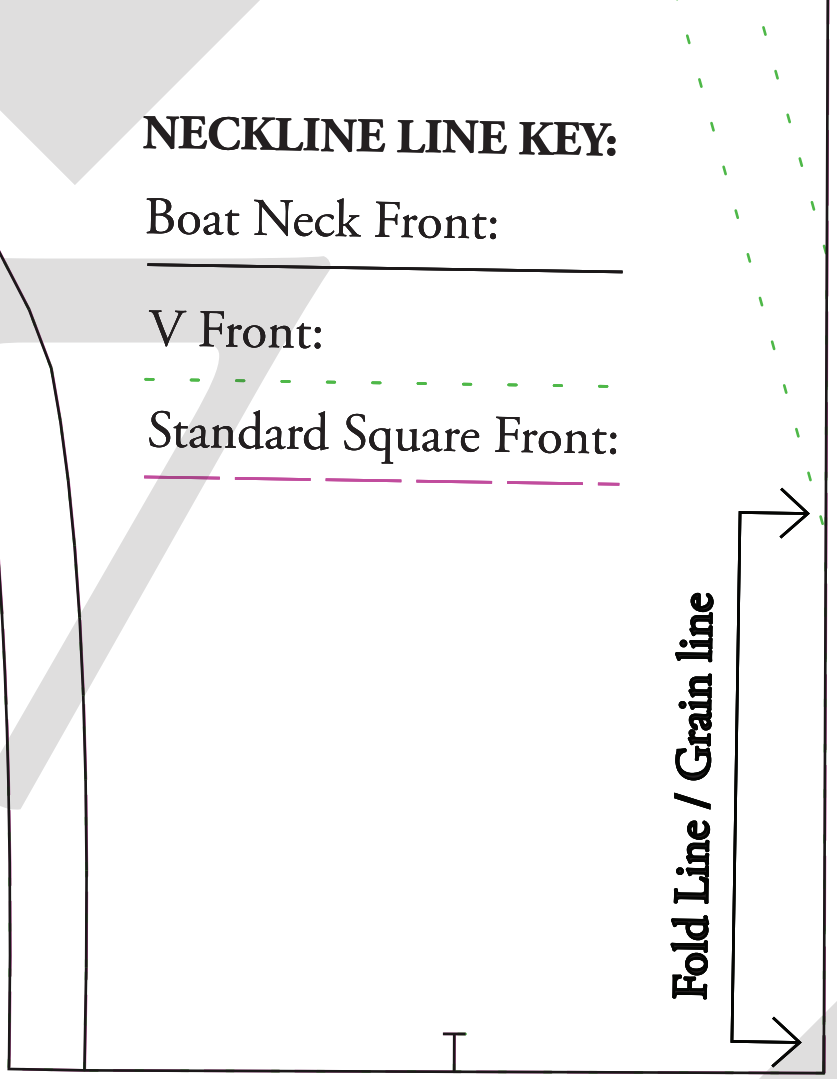
Boat Neck Front:



V Front:



Standard Square Front:



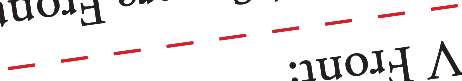
**Details:**  
Cut x1 Pair (x2 pieces in total)  
Seam Allowance included:  
1cm (3/8")

**NECKLINE LINE KEY:**

Boat Neck Front:



V Front:



Standard Square Front:



Deep Square Front:



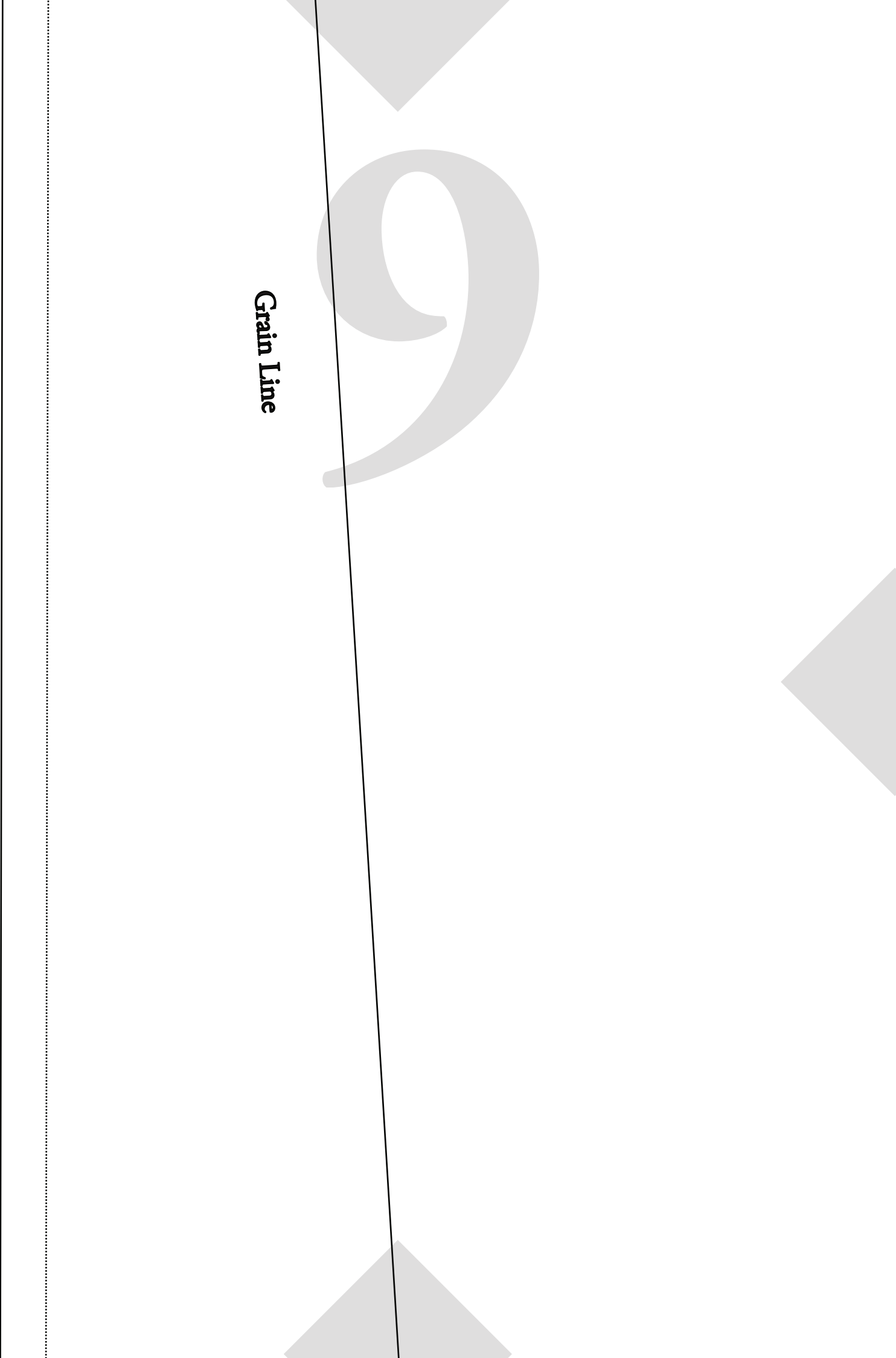
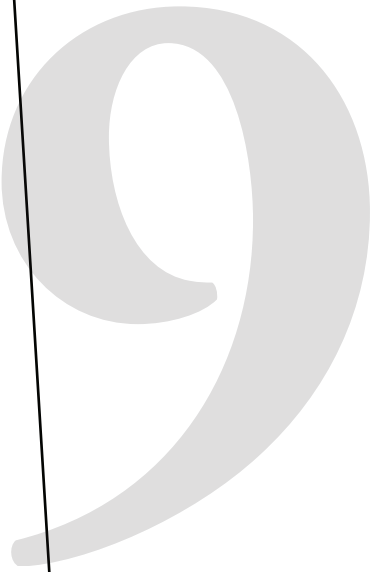
ROSSI WRAP

## DEEP SQUARE NECK SHOULDER TIE

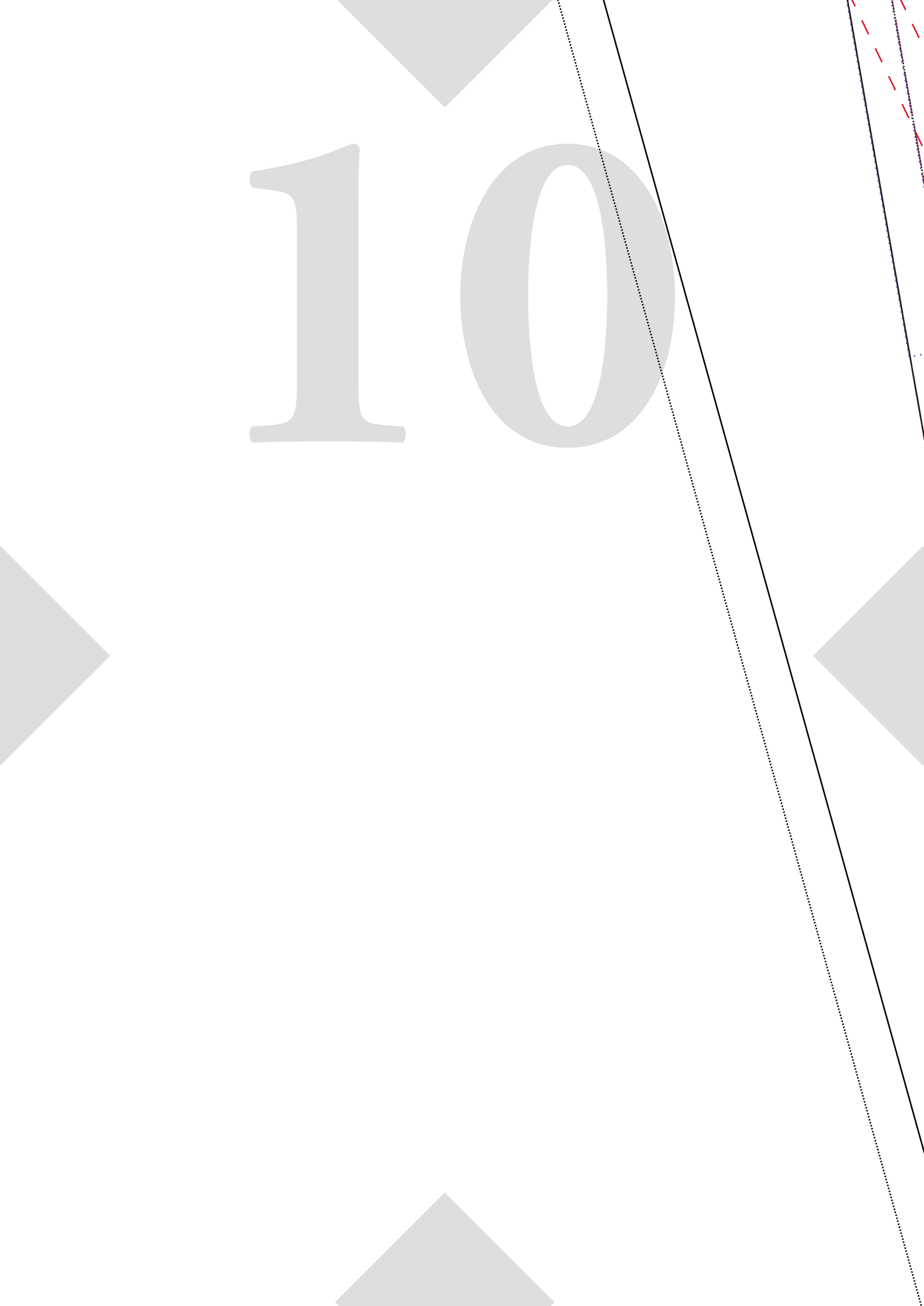
Cut x4

Seam Allowance included: 1cm (3/8")

**Grain Line**

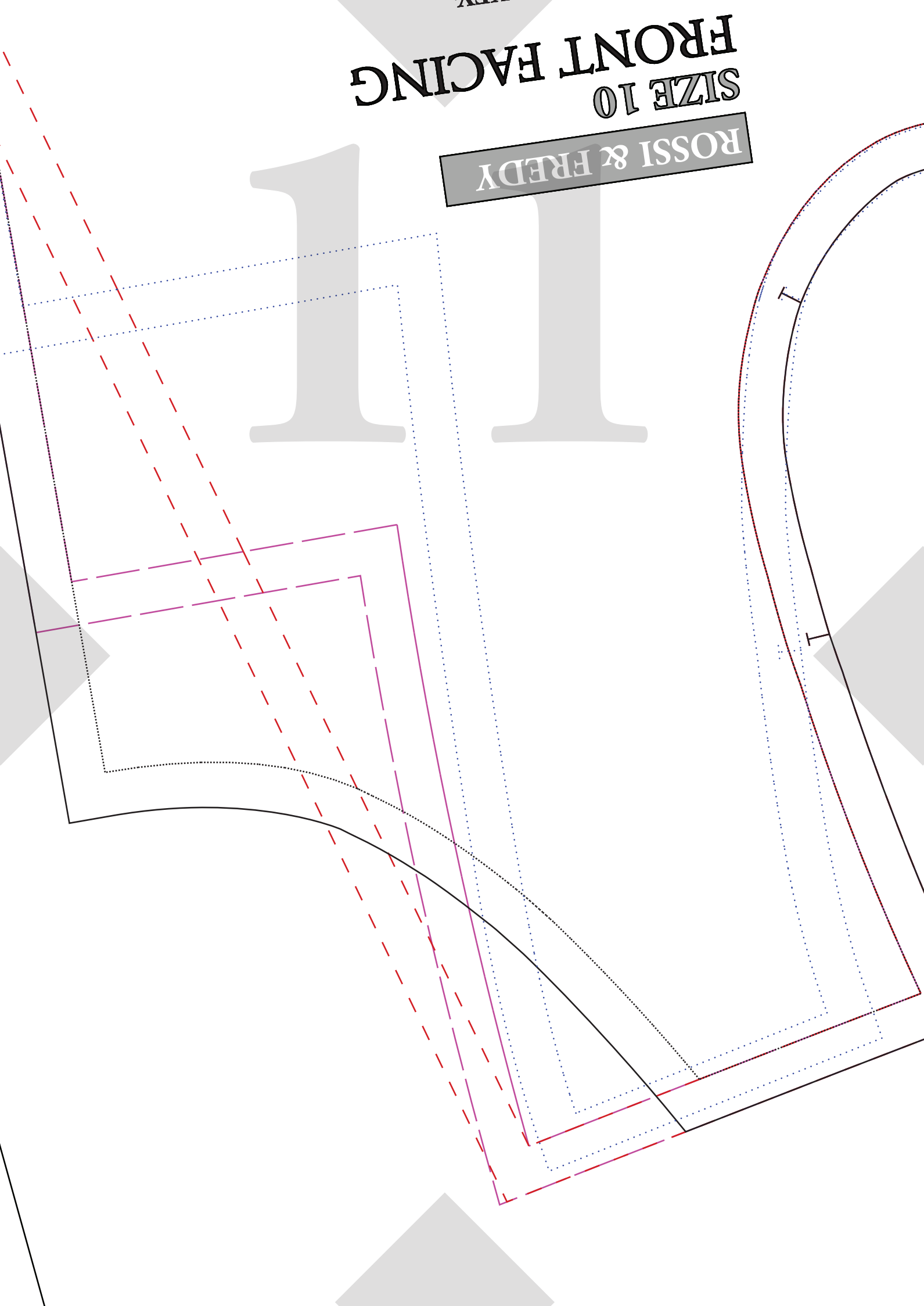


10



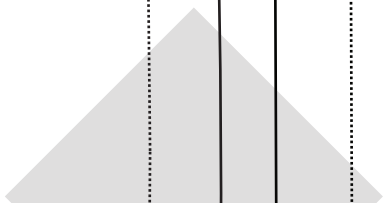
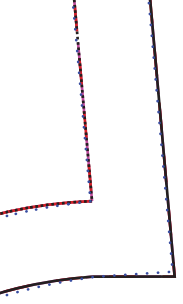
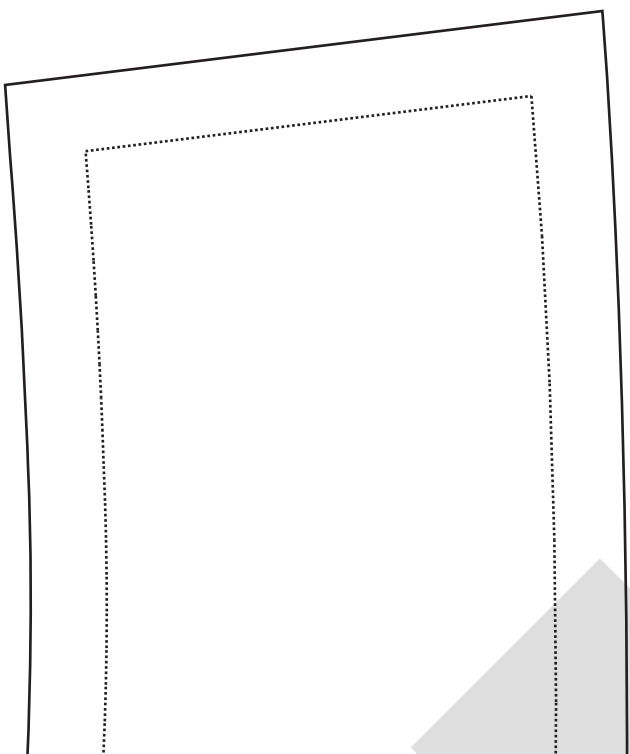
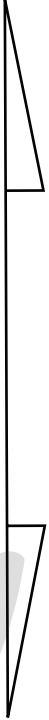
FRONT FACING  
SIZE 10

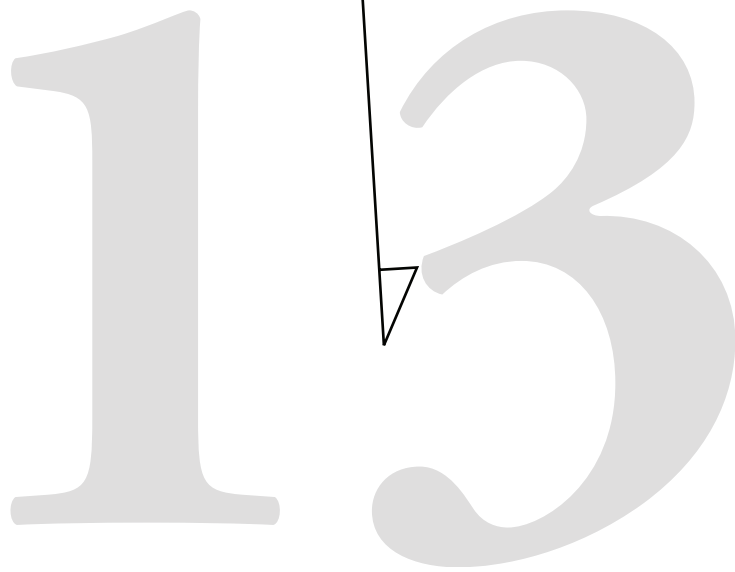
ROSSI & FREDY



12

Grain Line



A large, light gray number '13' is centered at the top of the page. A thin black line extends from the top of the '3', pointing downwards and slightly to the left, ending in a small black triangle. The background features faint, large, light gray geometric shapes, including a triangle at the top and another at the bottom.

**For Height 150 - 160cm**

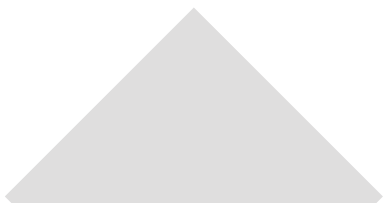
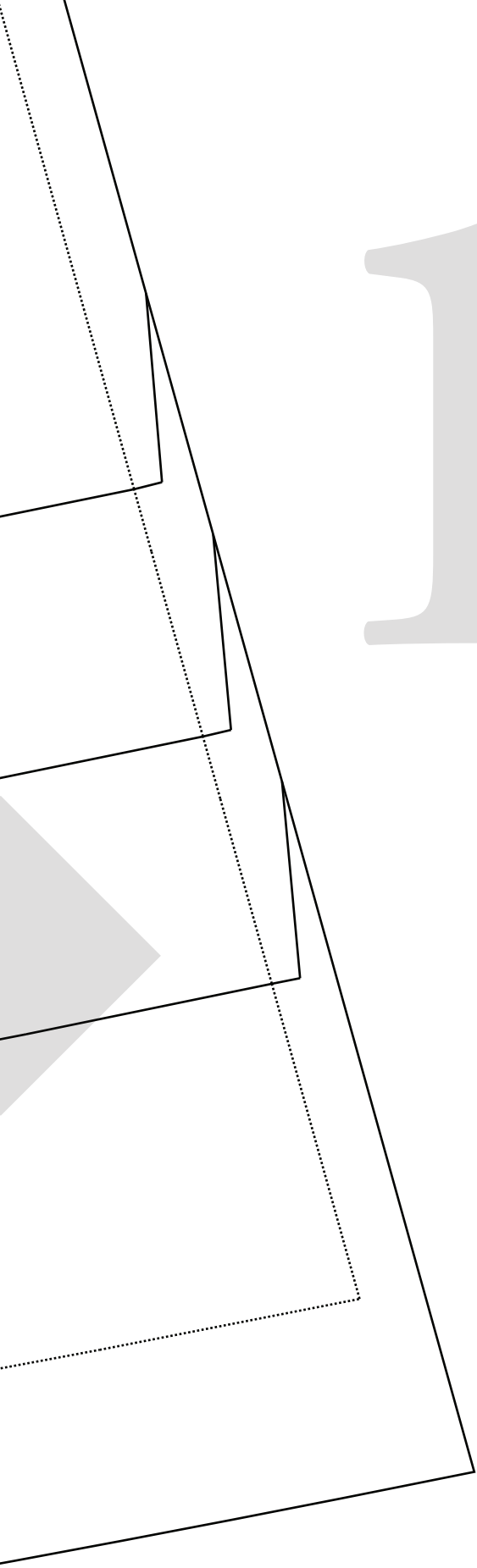
**For Height 161 - 170cm**

**For Height 171cm+**

**For Height 171cm+ (Extra Long)**

14

15



16

**ROSSI & FREDY**

**SIZE 10**

**CENTRE  
FRONT MAIN #2**

**Deep Square Neckline**

**Details:**

**Connect Pattern Piece to  
CFront #1 at notches below.**

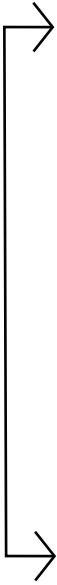
**Once connected:**

**Refer to CENTRE FRONT #1  
for cutting instructions**

**Seam Allowance included:**

**1cm (3/8")**

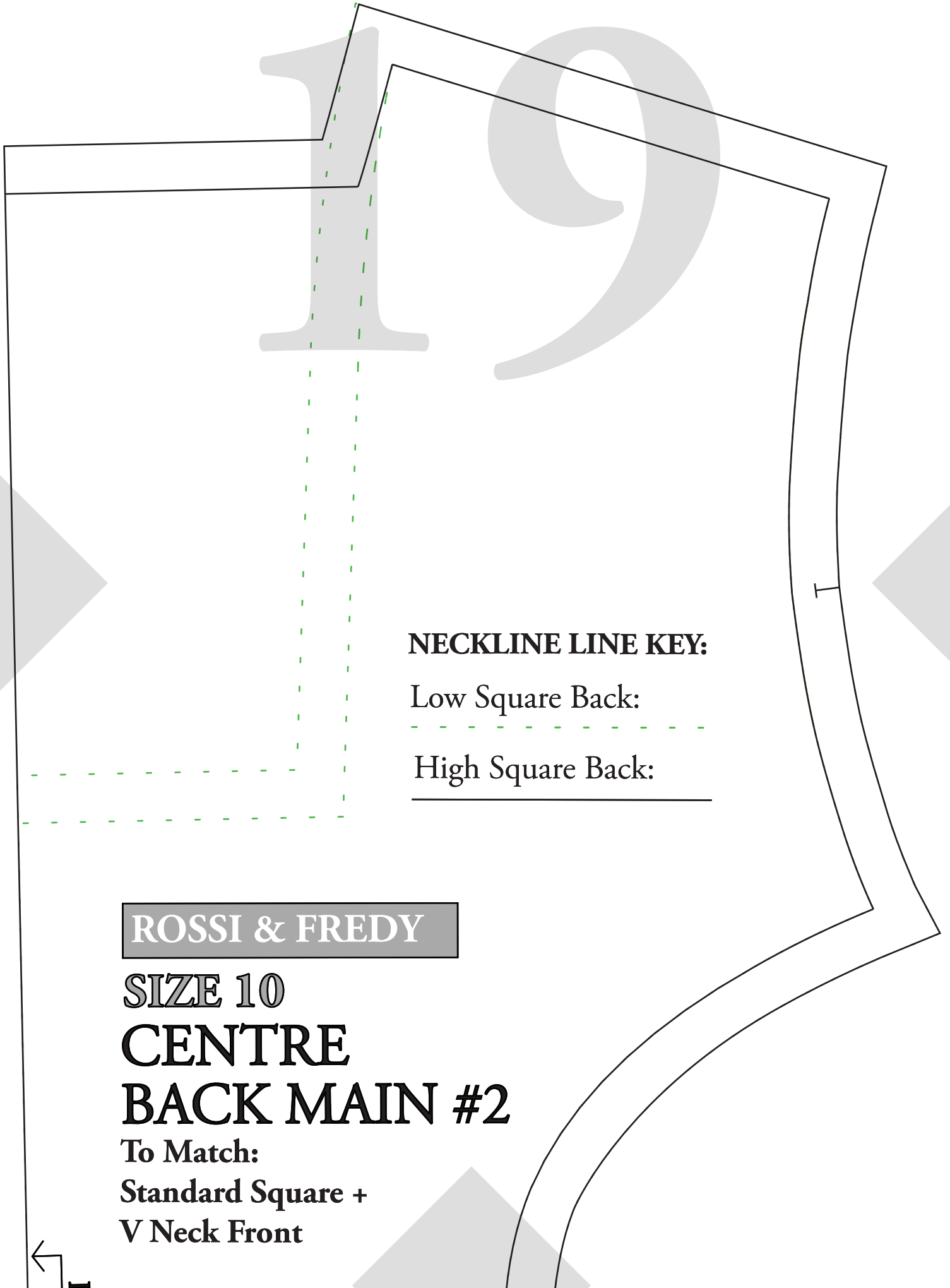
**Fold Line / Grain line**



ROSSI & FREDY

18





**NECKLINE LINE KEY:**

Low Square Back:

High Square Back:

**ROSSI & FREDY**

**SIZE 10**

**CENTRE**

**BACK MAIN #2**

To Match:

**Standard Square +**

**V Neck Front**



**ROSSI & FREDY**

**SIZE 10**

**CENTRE**

**BACK MAIN #2**

Low Square back

To Match:

Deep Square Front

**Details:**

Connect Pattern Piece to

Back #1 at notches below.

Once connected:

Refer to CENTRE BACK #1

for cutting instructions

Seam Allowance included:

1cm (3/8")

Fold Line / Grain line

**↳ TO MATCH**

**DEEP SQUARE BACK**

**BACK BODICE OPTION**

SIZE 10

# CENTRE FRONT MAIN #1

**Details:**

Connect Pattern Piece to CF #2  
at notches at top of pattern piece

Once connected:

Cut x1 on FOLD

Seam Allowance included: 1cm (3/8")

← Optional Leg  
Split notch

SIZE 10

# CENTRE BACK MAIN #1

**Details:**

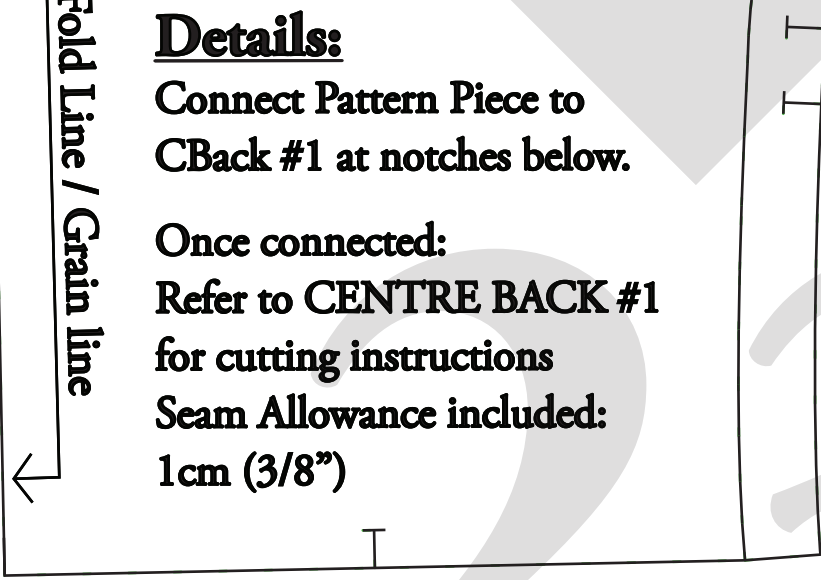
Connect Pattern Piece to CB #2  
at notches at top of pattern piece

Once connected:

Cut x1 on FOLD

Seam Allowance included: 1cm (3/8")





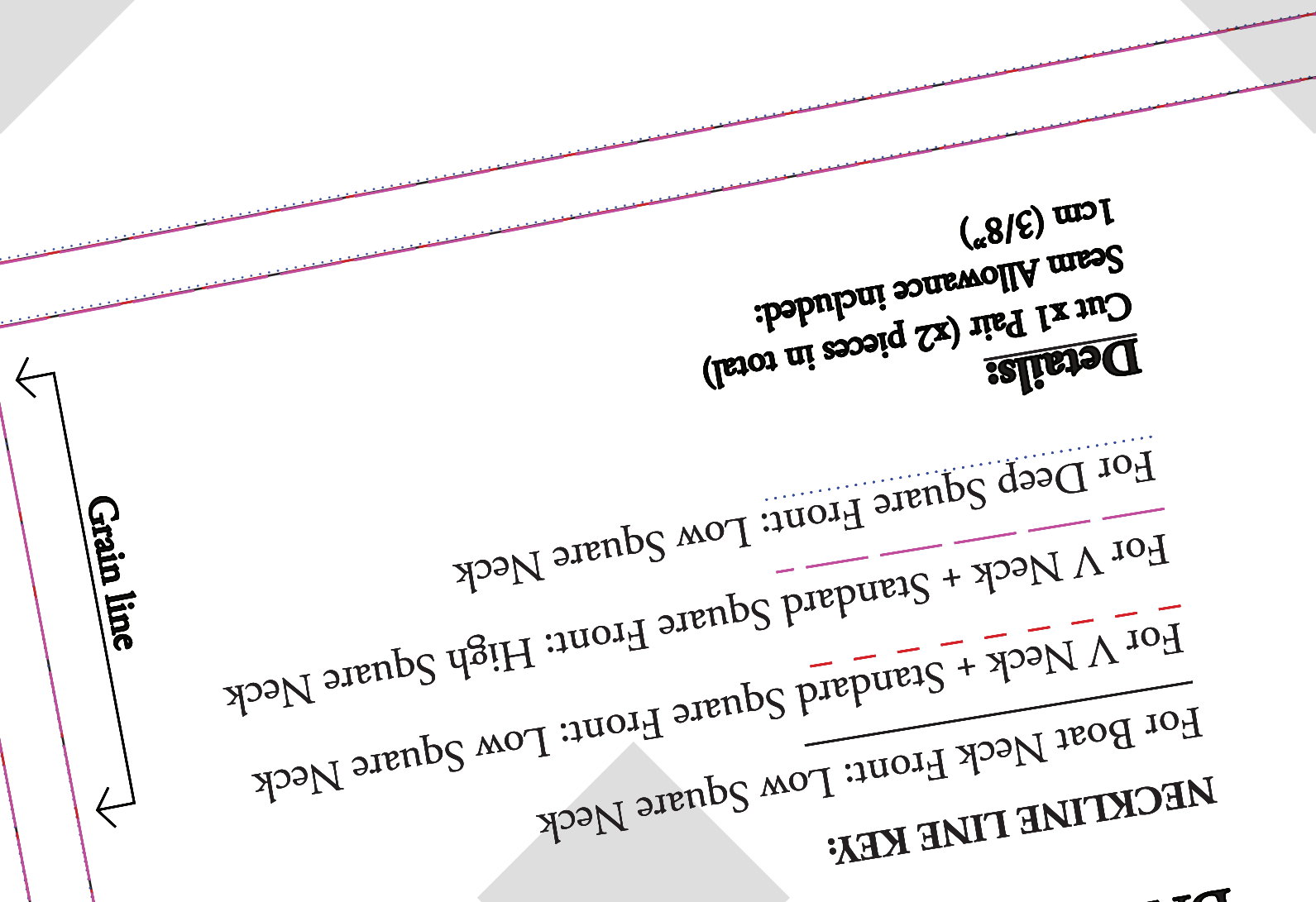
**Details:**

Connect Pattern Piece to CBack #1 at notches below.

Once connected:  
Refer to CENTRE BACK #1 for cutting instructions

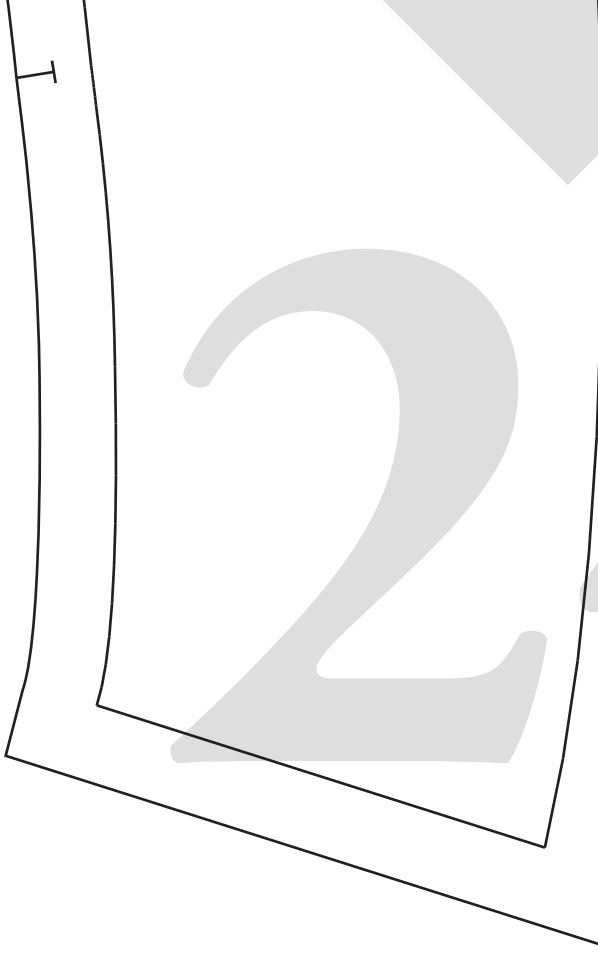
Seam Allowance included:  
1cm (3/8")

**^ TO MATCH STANDARD SQUARE & V NECK FRONT BACK BODICE OPTIONS**

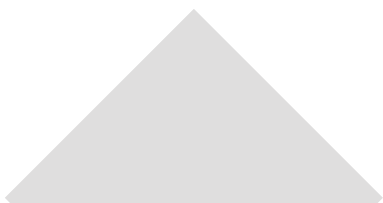
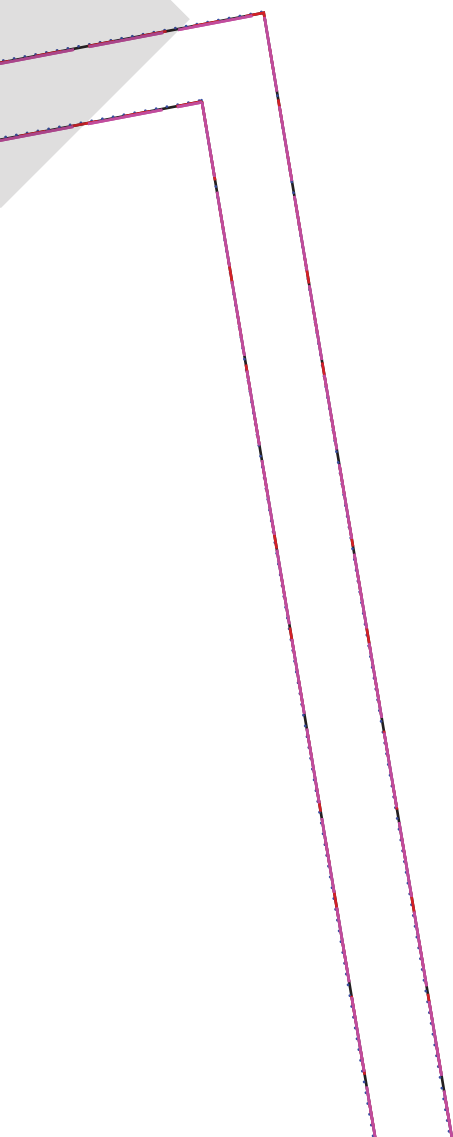


**Details:**  
Cut x1 Pair (x2 pieces in total)  
Seam Allowance included:  
1cm (3/8")

**NECKLINE LINE KEY:**  
 ————— For Boat Neck Front: Low Square Neck  
 - - - - - For V Neck + Standard Square Front: High Square Neck  
 - - - - - For V Neck + Standard Square Front: Low Square Neck  
 ..... For Deep Square Front: Low Square Neck



24

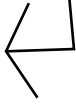


25

Fold Line / Grain line



**Fold Line / Grain line**

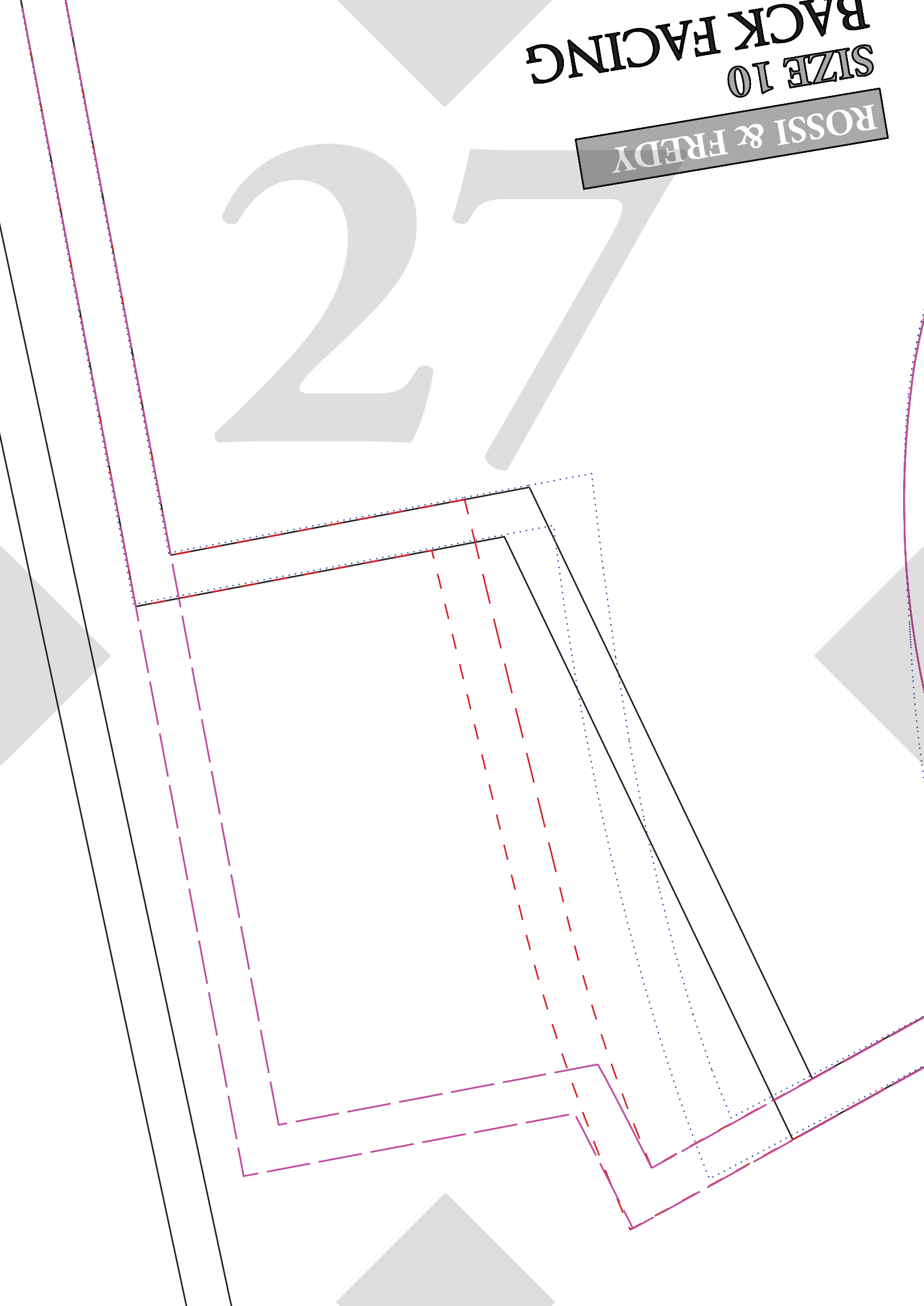


26

BACK FACING  
SIZE 10

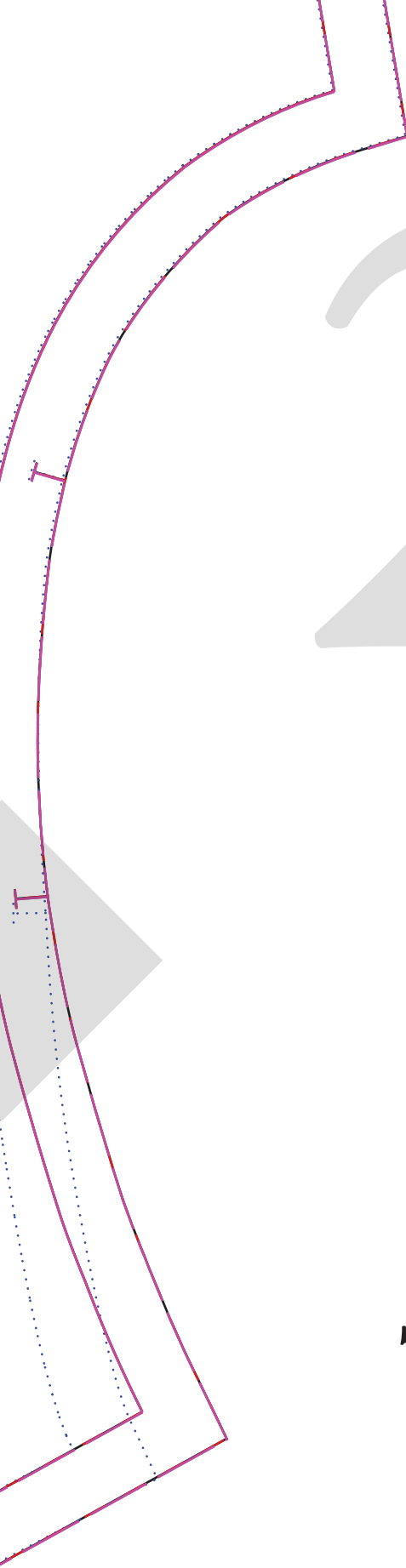
ROSSI & FREDY

27



# 28

## ✓ TO MATCH BOAT NECK FRONT BACK BODICE OPTION



**Details:**  
Connect Pattern Piece to  
Cback #1 at notches below.  
Once connected:  
Refer to CENTRE BACK #1  
for cutting instructions  
Seam Allowance included:  
1cm (3/8")

Fold Line / Grain line →



29

**For Height 150**

**For Height 160**

**For Height 170**

**For Height 171cm**

30

- 160cm

**For Height 150 - 160cm**

1 - 170cm

**For Height 161 - 170cm**

ght 171cm +

**For Height 171cm+**

+ (Extra Long)

**For Height 171cm+ (Extra Long)**

31



Boat Neck Front  
To Match:

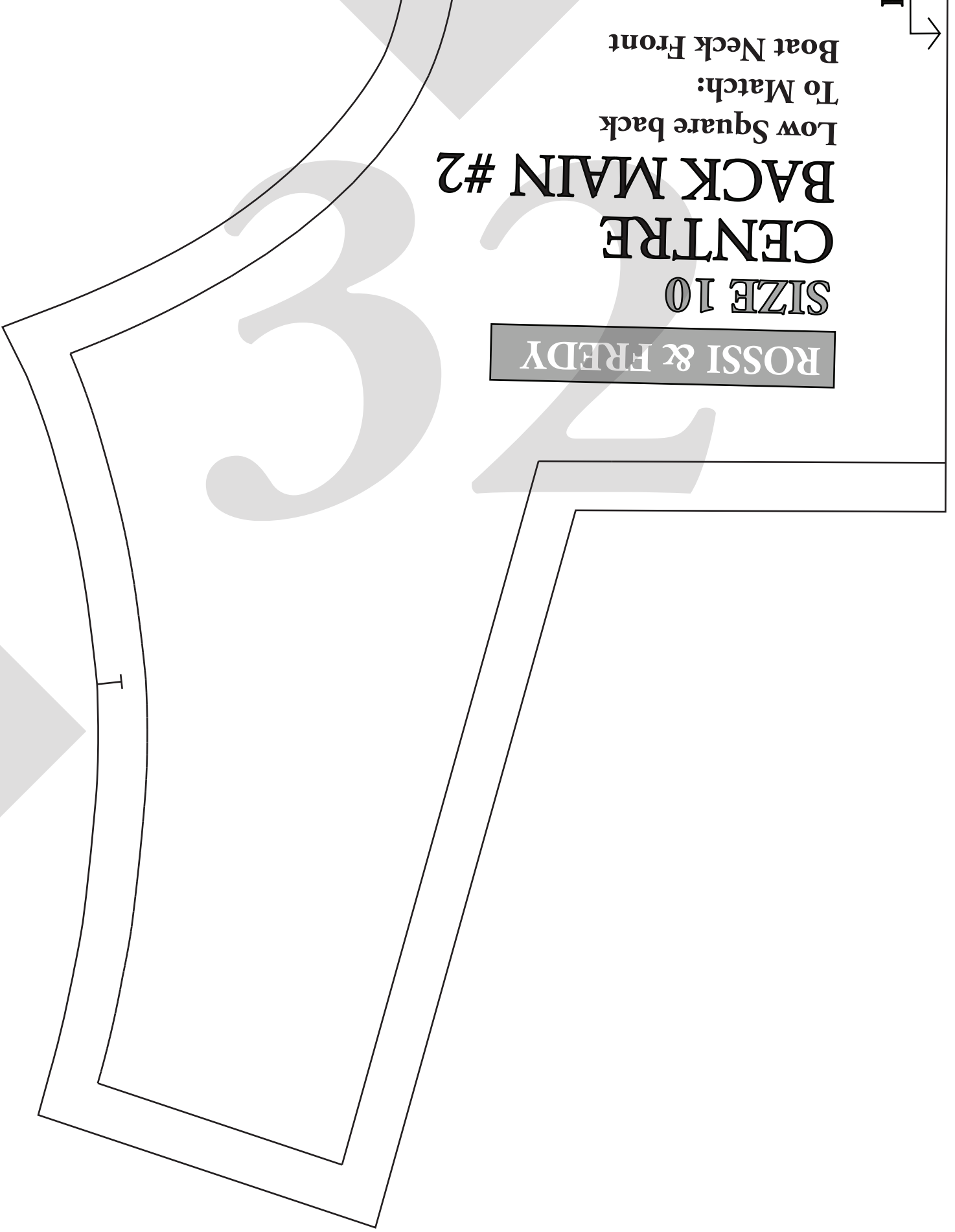
Low Square back

# BACK MAIN #2

## CENTRE

SIZE 10

ROSSI & FREDY





33

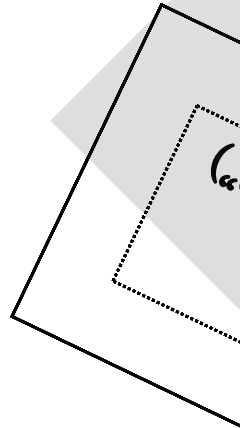
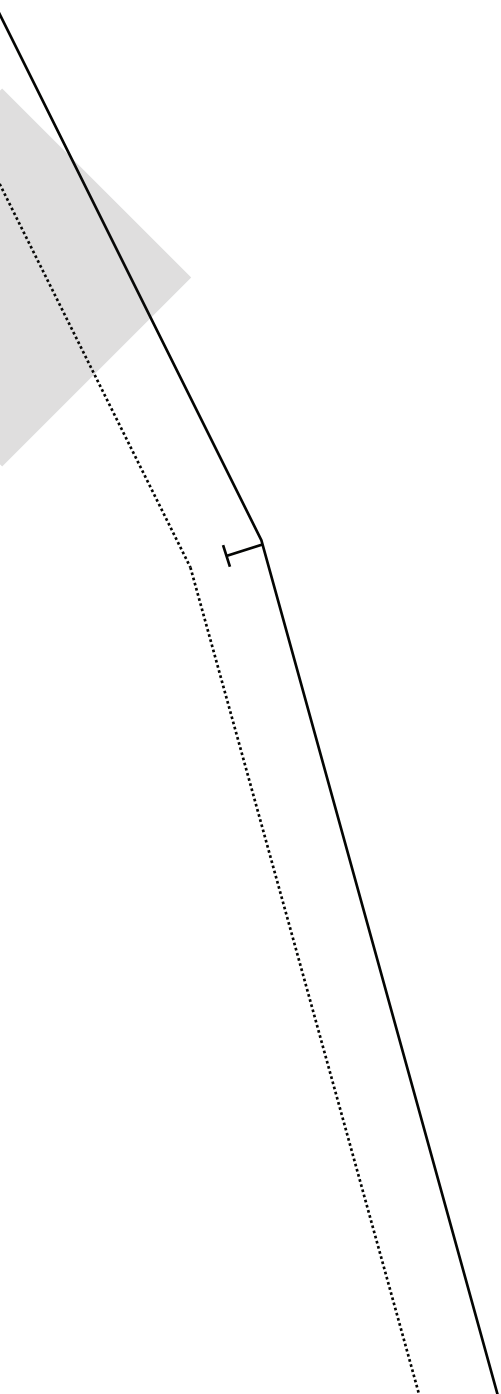
3

**ROSSI & FRE**  
**SIZE 10**  
**SHORT PUFF SLEEVE CUFF**

Fold Line

Grain Line

The diagram shows a rectangular pattern piece for a sleeve cuff. It features a central text box with the brand name 'ROSSI & FRE', the size 'SIZE 10', and the item name 'SHORT PUFF SLEEVE CUFF'. To the left of the text box, a vertical double-headed arrow is labeled 'Fold Line'. Below the text box, a horizontal double-headed arrow is labeled 'Grain Line'. The pattern piece is bounded by solid lines on the top and bottom, and dashed lines on the left and right sides.



DIY

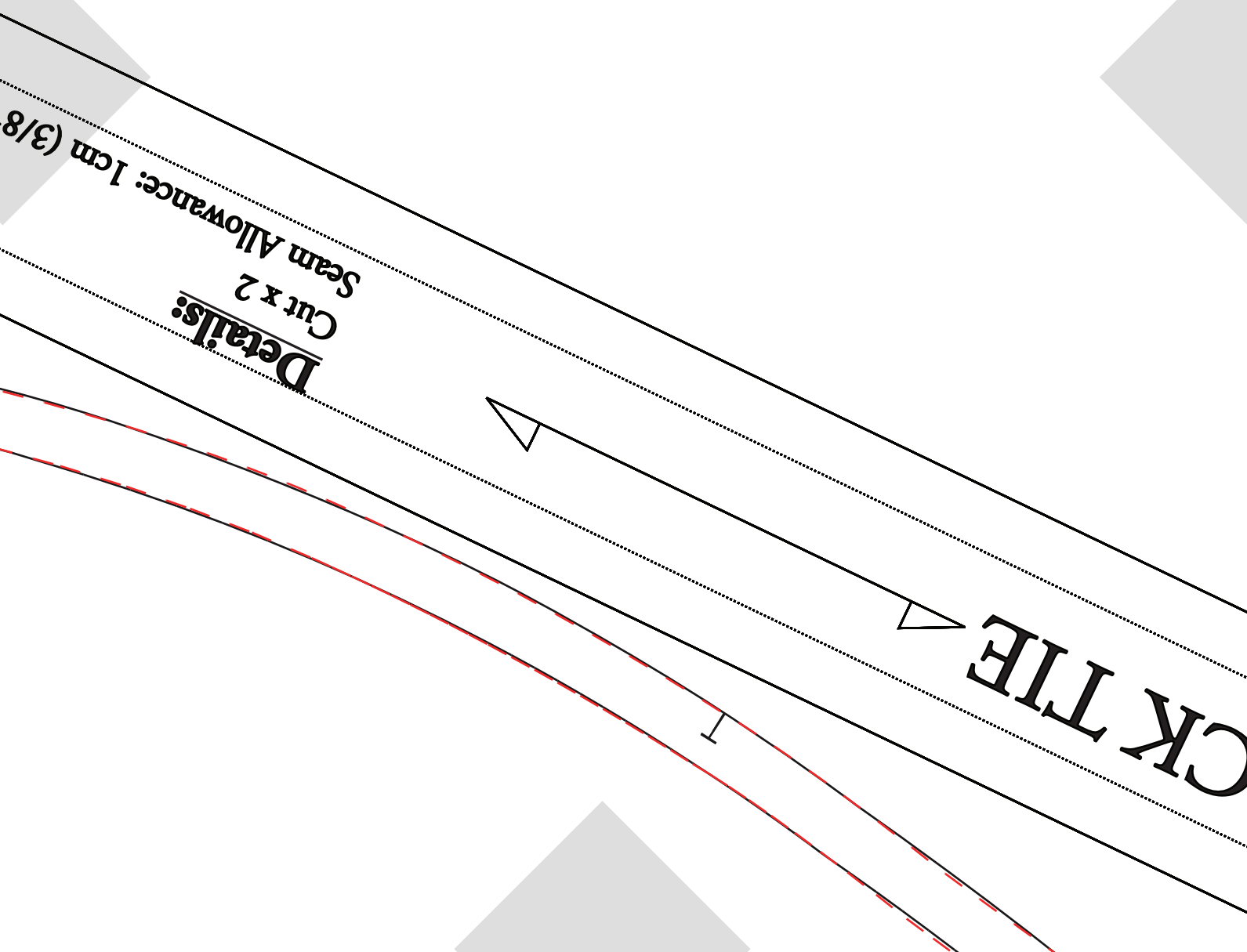
**Details:**

Cut x2 on Fold

(Measure upper arm to compare

See beginning of sewing instructions)

Seam Allowance included: 1cm (3/8")



ROSSI & FREDY

# POCKET BAG

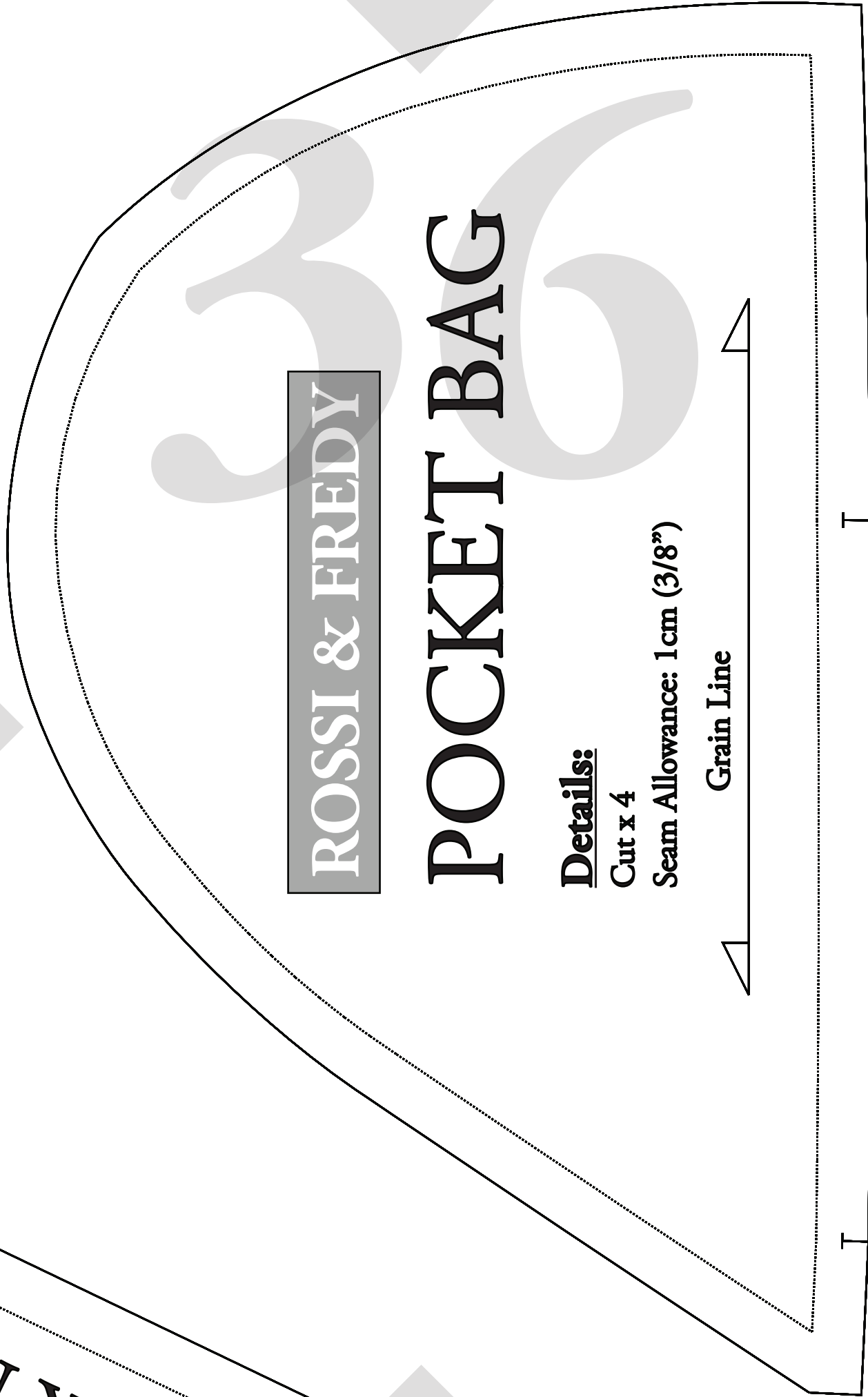
**Details:**

Cut x 4

Seam Allowance: 1cm (3/8")

Grain Line

BACK NECK



**ROSSI & FREDY**

**SIZE 10**

# **SIDE BACK #1**

**Details:**

**Connect Pattern Piece to #2  
at notches at top of pattern piece**

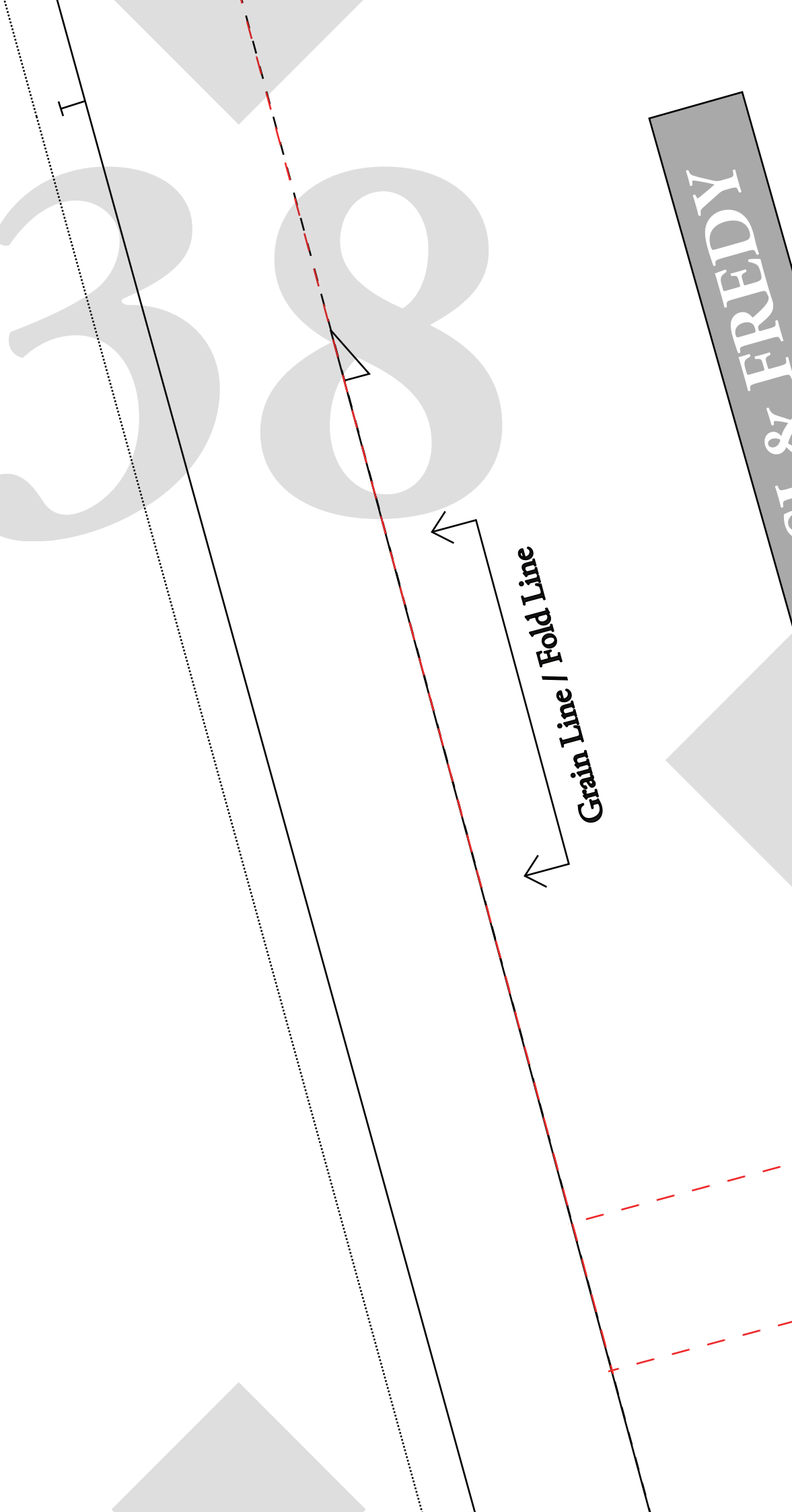
**Once connected:**

**Cut x 1 Pair (2 pieces all up)**

**Seam Allowance included: 1cm (3/8")**

38

at & FREDY



ROSSI &

SIZE 10

# SHORT PUFF SLEEVE

Details:

Cut x 2 on fold

Seam Allowance included: 1cm (3/8")

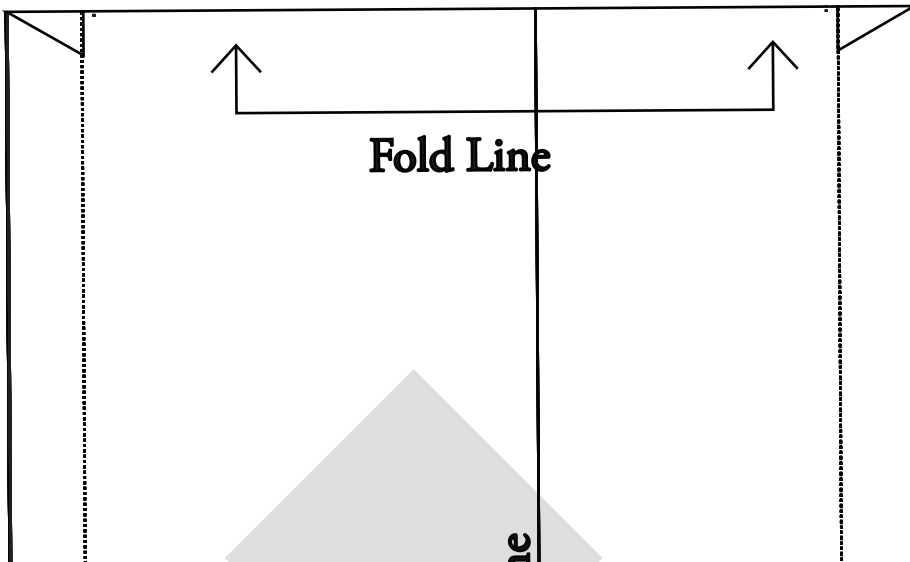
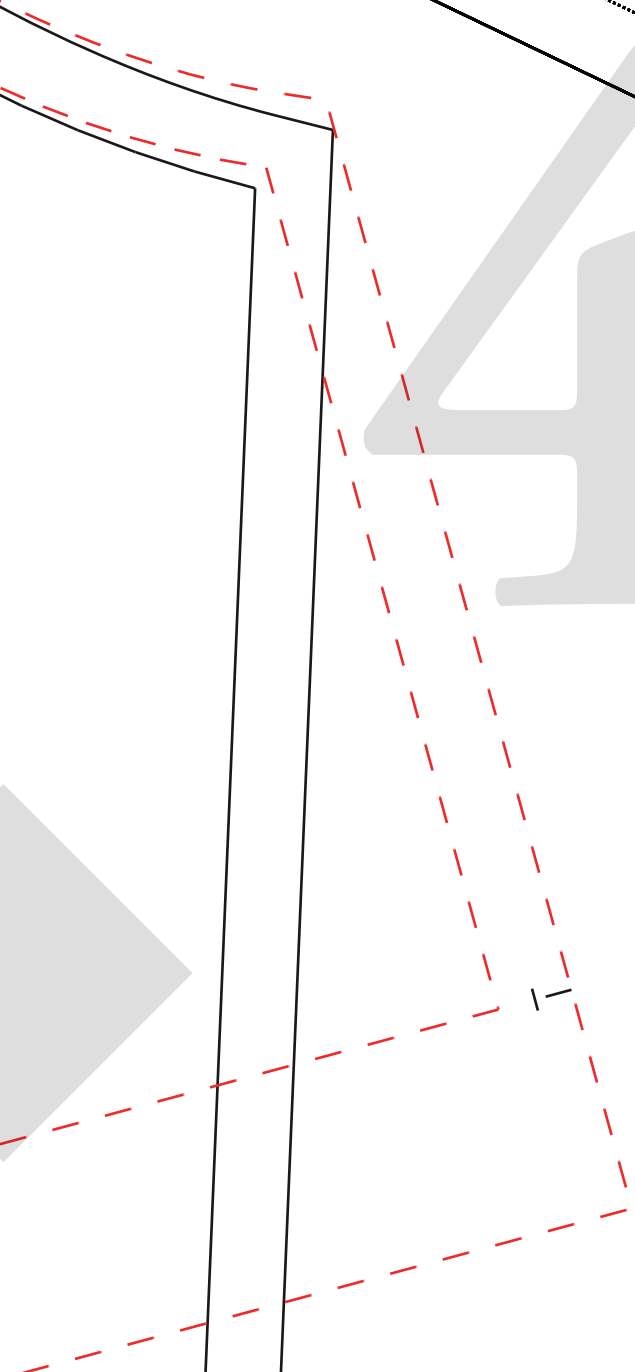
Seam Allowance included: 1cm (3/8")

LINE KEY

SHORT PUFF SLEEVE:

ROSSI & FREDY


40



41

Grain Line

42



Grain Line / Fold Line

**ROSSI & FREDY**

**SIZE 10**  
**LONG SHIRRED**  
**SLEEVE**

**Details:**

Cut x 2 on fold

Seam Allowance included: 1cm (3/8")

**LINE KEY**

**LONG SHIRRED:**

ROSSI & FREDY

SCRUNCHIE

Details:

Cut x 1 on fold

Seam Allowance included: 1cm (3/8")

Grain Line

A large, light grey number '45' is centered at the top of the page. The number is composed of two digits, '4' and '5', in a bold, sans-serif font. The '4' has a vertical stem and a horizontal crossbar. The '5' has a vertical stem, a horizontal crossbar, and a curved bottom. The number is positioned above a series of horizontal lines that divide the page into sections.

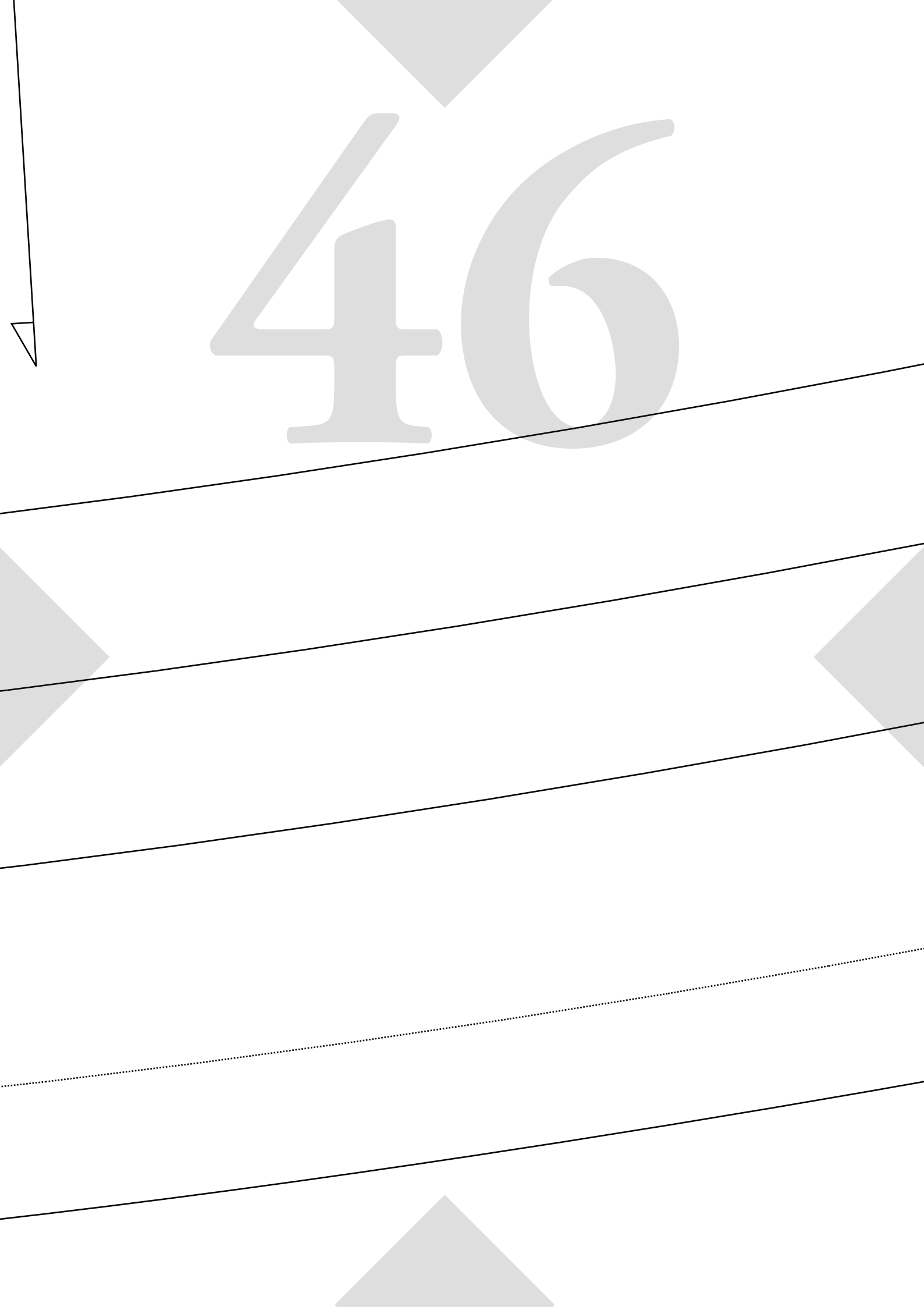
**For Height 150 - 160cm**

**For Height 161 - 170cm**

**For Height 171cm+**

**For Height 171cm+ (Extra Long)**

46



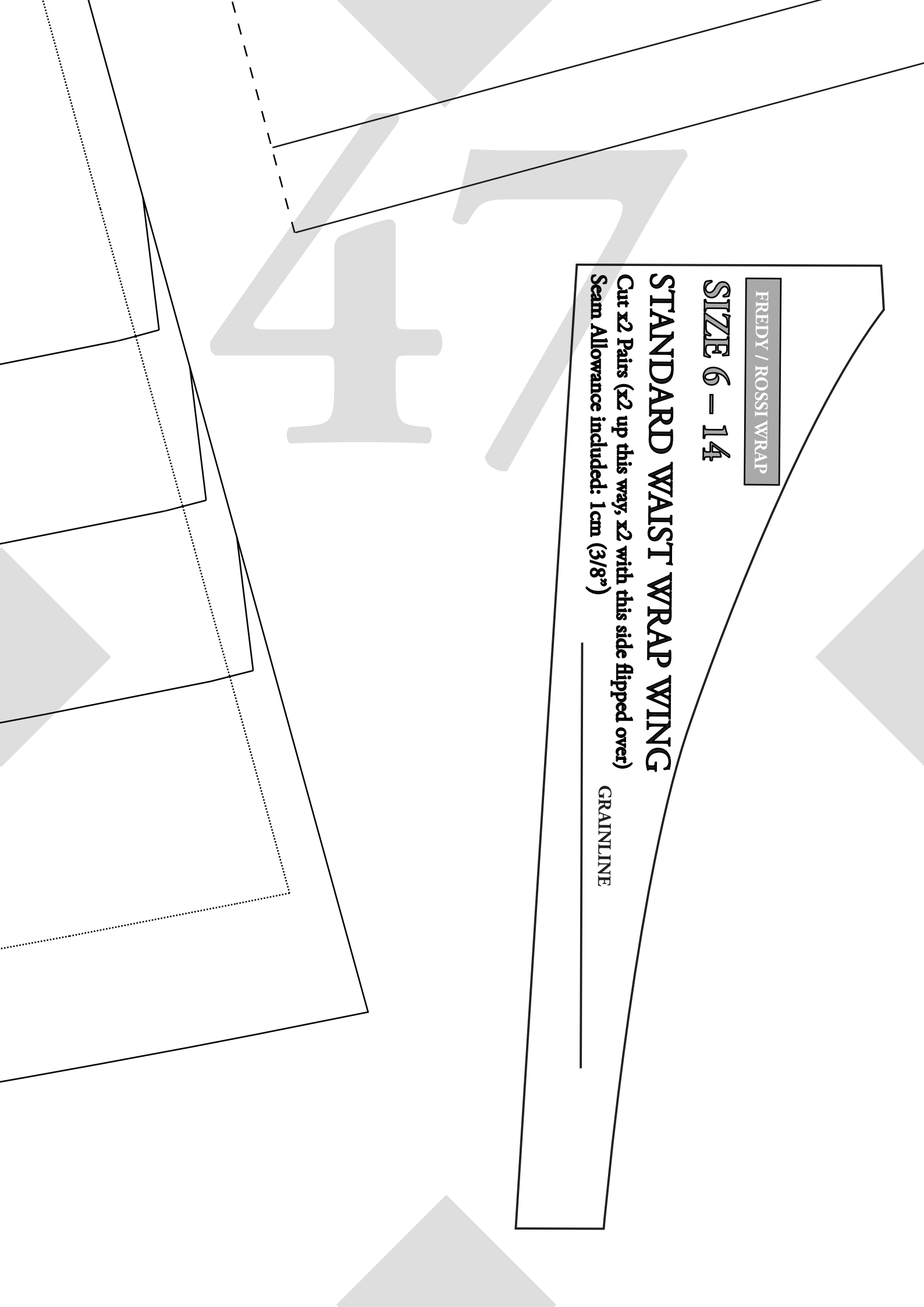
FREDY / ROSSI WRAP

SIZE 6 - 14

## STANDARD WAIST WRAP WING

Cut x2 Pairs (x2 up this way, x2 with this side flipped over)  
Seam Allowance included: 1cm (3/8")

GRAINLINE



**ROSSI &**

**HEAD**

**Details:**

Cut x 1 on fold. Inc

Seam Allowance inc

**SIDE BACK #2**  
**SIZE 10**

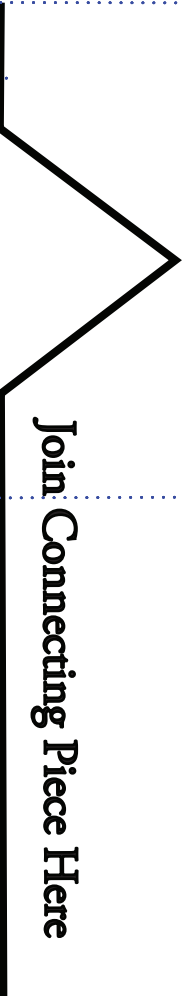
**Details:**

Connect Pattern Piece to Back #1  
at notches below.

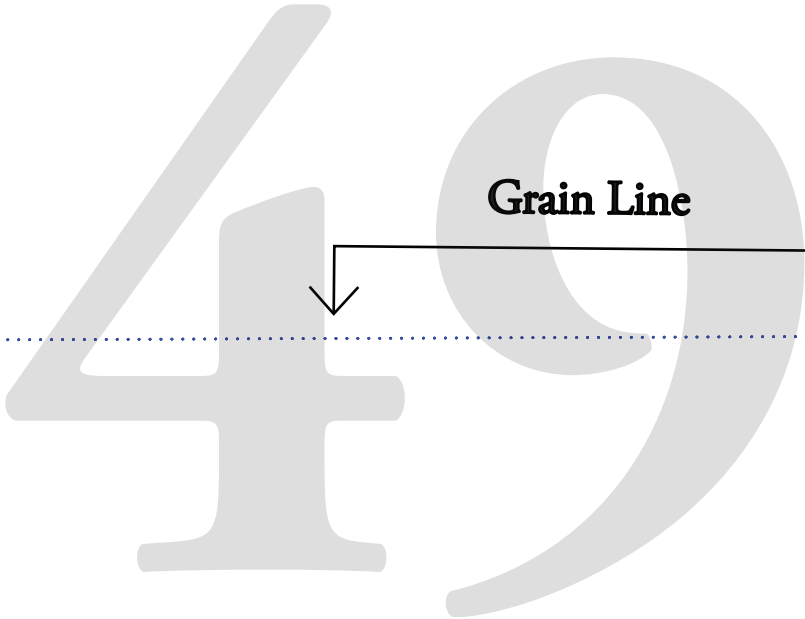
Once connected:

Refer to SIDE BACK #1 for cutting  
instructions  
Seam Allowance included: 1cm (3/8")

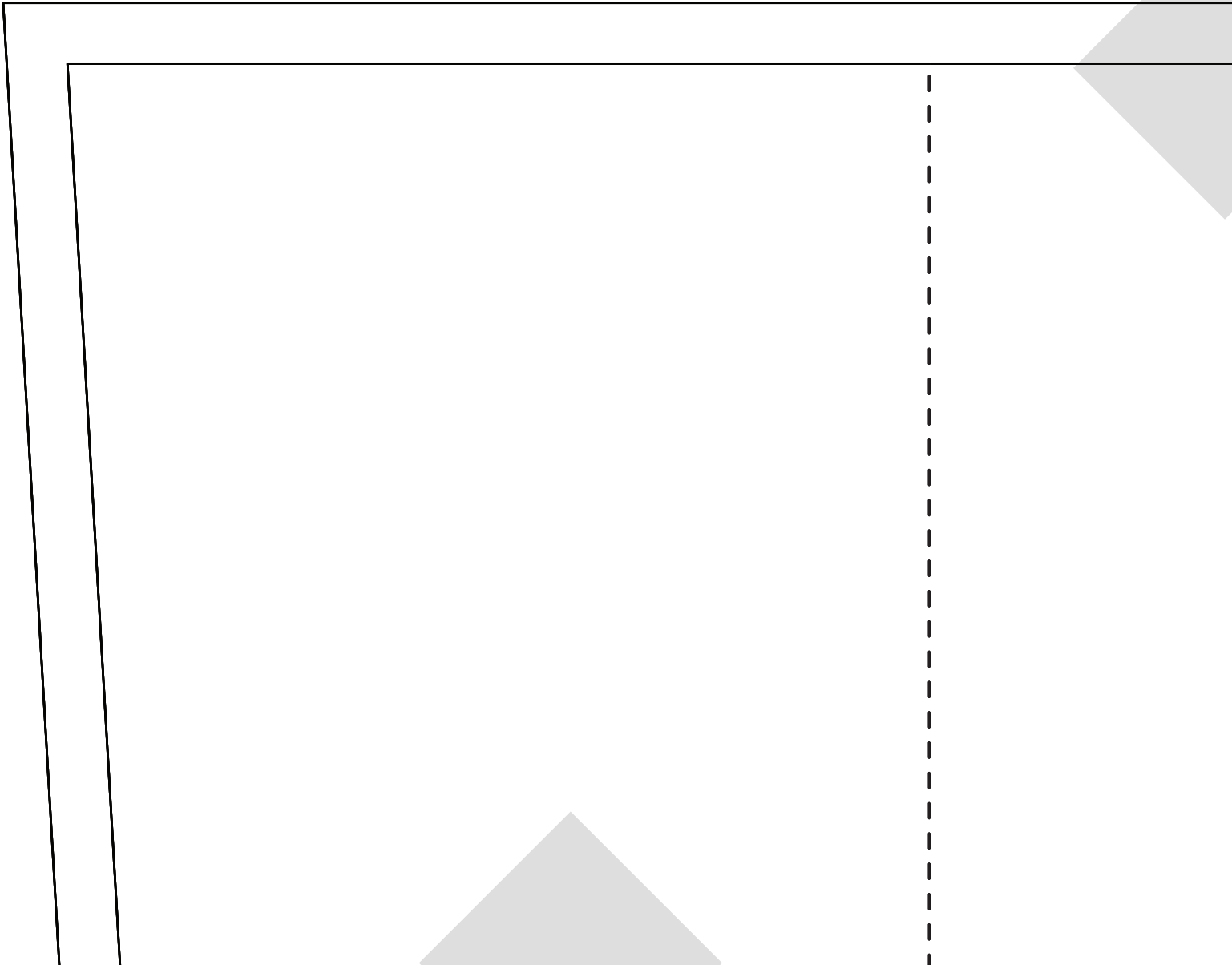
Grain Line



Join Connecting Piece Here



Grain Line



SIZE 6 - 14

# TWO TONE WAIST WRAP

## #2

### Details:

Connect Pattern Piece to #1

See Wrap #1 once connected

for cutting instructions

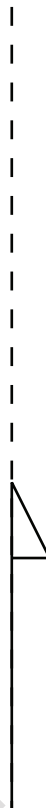
Seam Allowance included: 1 cm (3/8")

ROSSI & FREDY

51

52

**Join Connecting Piece Here**



53

Grain Line / Fold Line

ROSSI & FREDY

SIZE 6 - 14

STANDARD

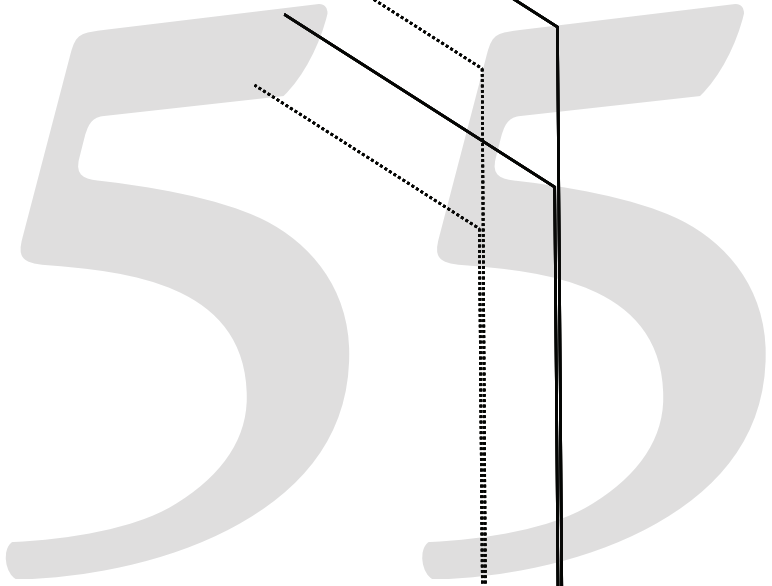
THU

54

ROSSI & FRE

SIZE 6 - 14

STANDARD



Grain Line / Fold Line

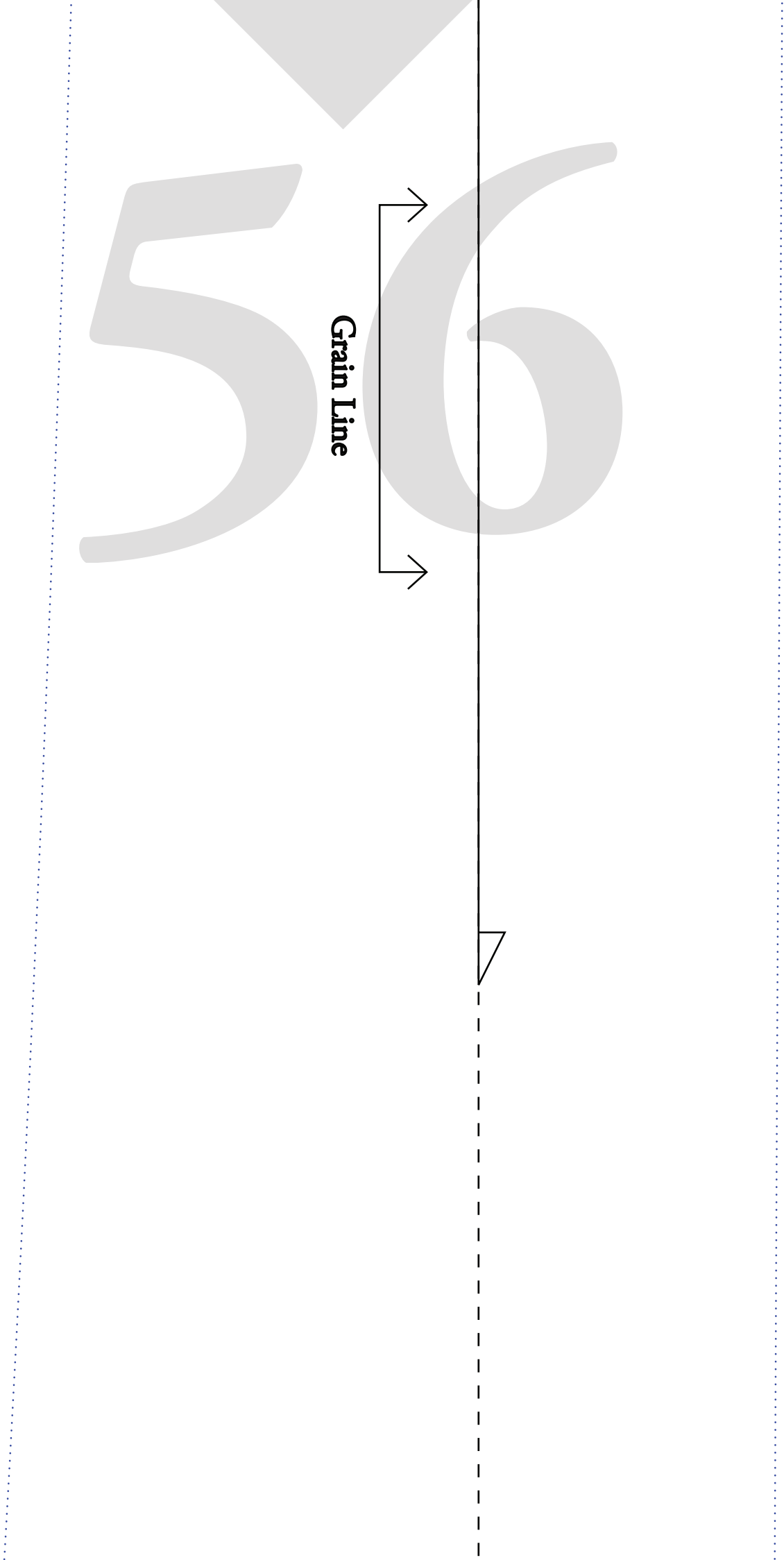


RDY

RD, THIN

56

Grain Line



# STANDARD + TH WAIST WRAP #1

## **Details:**

Connect Pattern Piece to #2

Once connected:

Cut x 2

Seam Allowance included: 1cm (3/8")



Join Connecting Piece Here

IN

# STANDARD WAIST W

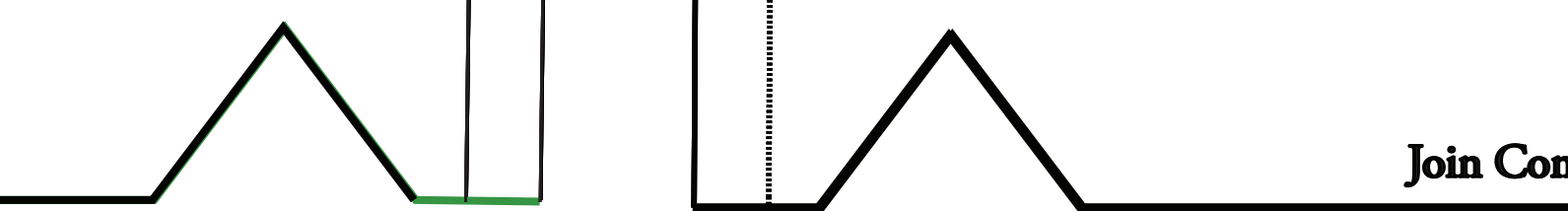
58

**Details:**

Connect Pattern Piece to #1

See Wrap #1 once connected for c

Seam Allowance included: 1cm (3



Join Con

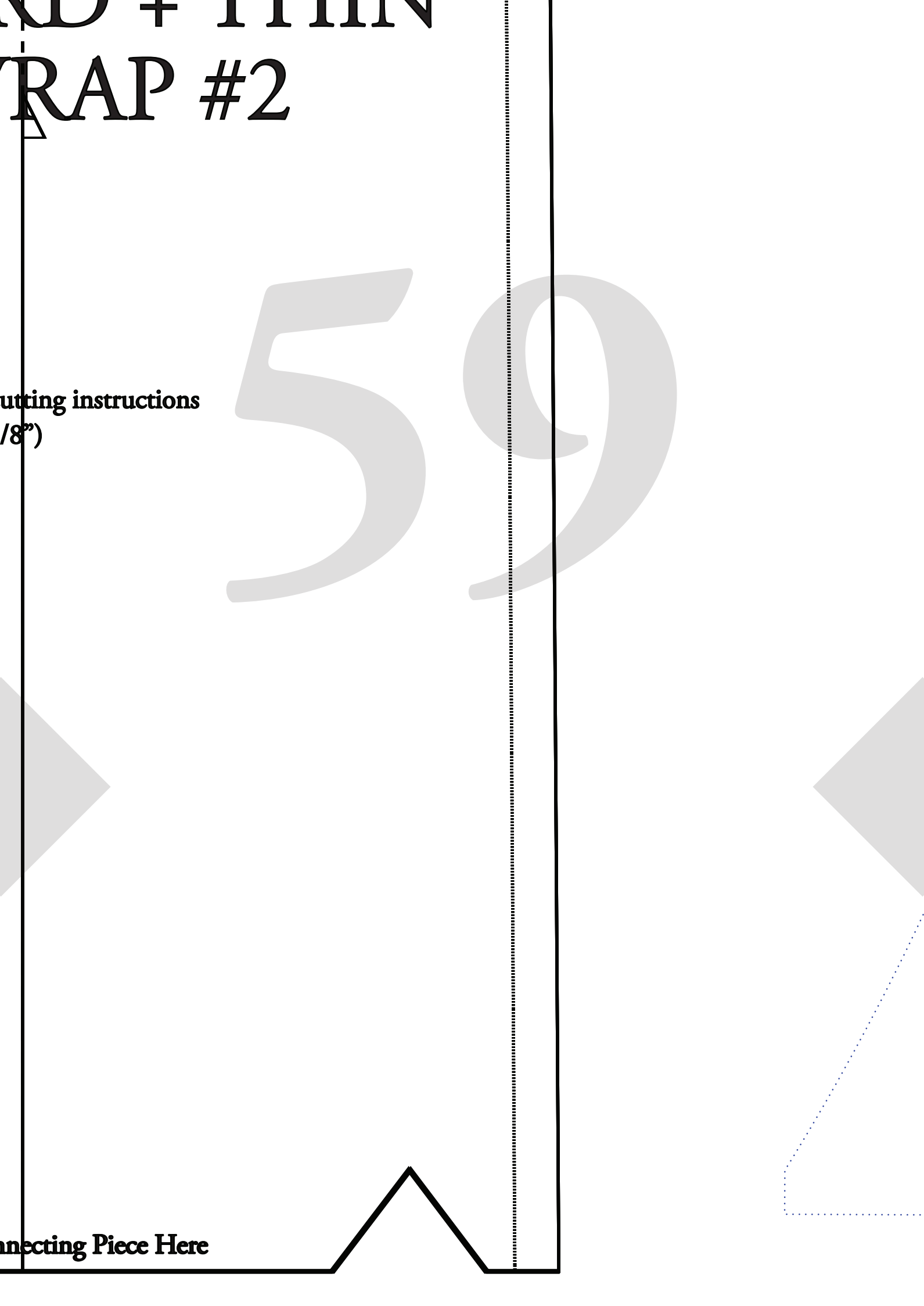
WOOD + THIN

# TRAP #2

Cutting instructions  
(1/8")

50

Connecting Piece Here



ROSSI & FREDY

SIZE 6 – 14

# TWO TONE WAIST WRAP #1

## **Details:**

Connect Pattern Piece to #2

Once Connected :

Cut x 2 in Primary Colour (one pair)

Cut x 2 in Secondary Colour (one pair)

Seam Allowance included: 1cm (3/8")