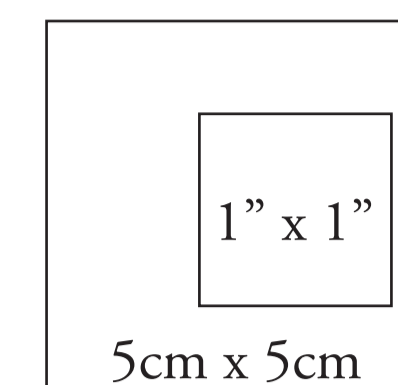


© The Bold One Workshop Patterns.
These patterns are copyrighted by The Bold One Patterns
and may not be copied, shared, or resold.
Reproducing / using this pattern to sell items
commercially is prohibited.

Seam allowance = 1cm (3/8")
Use the following boxes to check
pattern has been printed to correct scale.



See instructions PDF
included in your files for a
pattern piece checklist +
navigating your patterns :)

ROSSI & FREDY

SIZE 8

SIDE BACK #1

Details:
Connect Pattern Piece to #2
at notches at top of pattern piece

Once connected:
Cut x 1 Pair (2 pieces all up)
Seam Allowance included: 1cm (3/8")

Grain Line

For Height 150 - 160cm

For Height 161 - 170cm

For Height 171cm+

For Height 171cm+ (Extra Long)

ROSSI & FREDY
SIZE 8
SIDE BACK #2
Details:
Connect Pattern Piece to Back #1
at notches below.
Once connected:
Refer to SIDE BACK #1
for cutting instructions
Seam Allowance included:
1cm (3/8")

ROSSI & FREDY
SIZE 8
**CENTRE
FRONT MAIN #2**
Details:
Connect Pattern Piece to
CFront #1 at notches below.
Once connected:
Refer to CENTRE FRONT #1
for cutting instructions
Seam Allowance included: 1cm (3/8")

NECKLINE LINE KEY:
Boat Neck Front:
V Front:
Standard Square Front:

Fold Line / Grain line

ROSSI & FREDY
SIZE 8
FRONT FACING
NECKLINE LINE KEY:
Boat Neck Front:
V Front:
Standard Square Front:
Deep Square Front:

Details:
Cut x 1 Pair (2 pieces in total)
Seam Allowance included:
1cm (3/8")

ROSSI & FREDY
BACK NECK TIE
Details:
Cut x 2
Seam Allowance: 1cm (3/8")

Grain Line

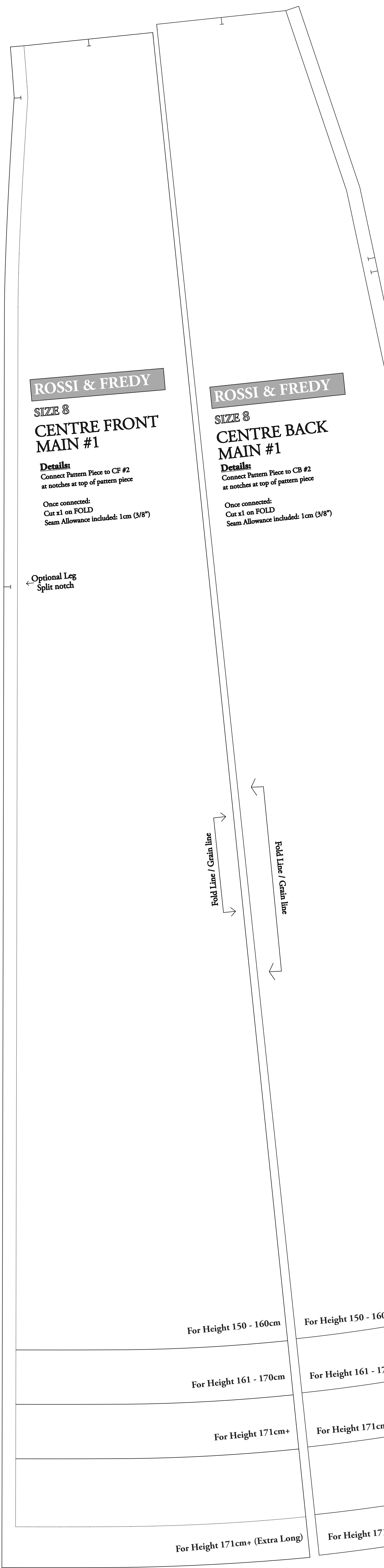
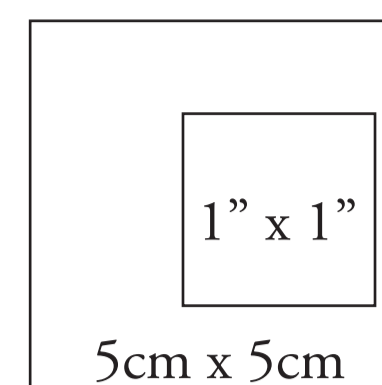
ROSSI & FREDY
SIZE 8
SHORT PUFF COLLAR
Details:
Cut x 2 on one side
Measure: 16cm (6 1/4")
Seam Allowance: 1cm (3/8")

GRACIE & TYDIA
SCRUNCHIE
Details:
Cut x 1 on one side
Seam Allowance: 1cm (3/8")

GRACIE & TYDIA
HEAD SCARF
Details:
Cut x 1 on one side
Seam Allowance: 1cm (3/8")

ROSSI & FREDY
SIZE 8
**CENTRE
FRONT MAIN #2**
Deep Square Neckline
Details:
Connect Pattern Piece to
CFront #1 at notches below.
Once connected:
Refer to CENTRE FRONT #1
for cutting instructions
Seam Allowance included:
1cm (3/8")

Fold Line / Grain line



ROSSI & FREDY

SIZE 8
CENTRE FRONT
MAIN #1

Details:
Connect Pattern Piece to CF #2
at notches at top of pattern piece

Once connected:
Cut x1 on FOLD
Seam Allowance included: 1cm (3/8")

Optional Leg
Split notch

ROSSI & FREDY

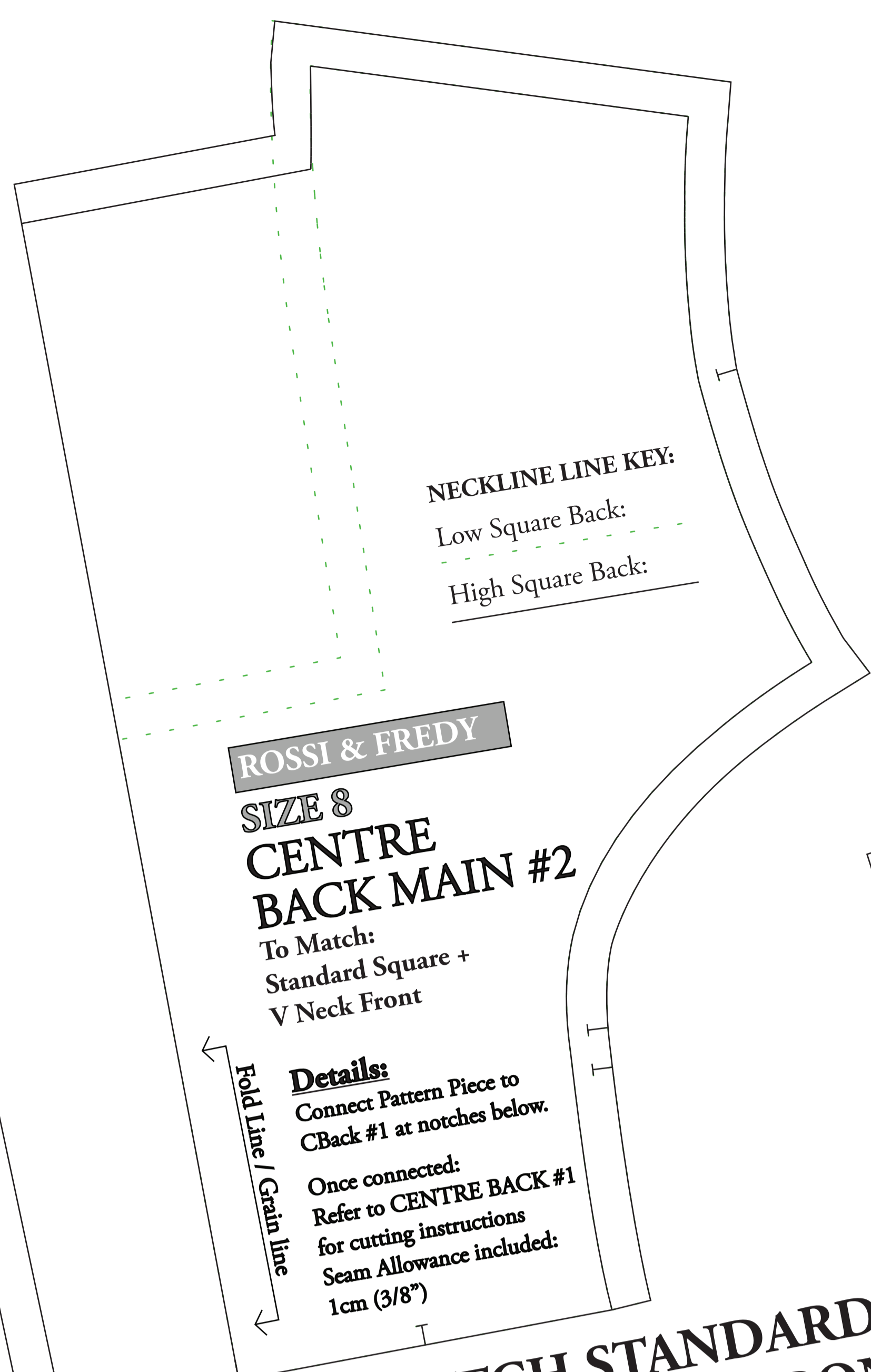
SIZE 8
CENTRE BACK
MAIN #1

Details:
Connect Pattern Piece to CB #2
at notches at top of pattern piece

Once connected:
Cut x1 on FOLD
Seam Allowance included: 1cm (3/8")

Fold Line / Grain line

Fold Line / Grain line



ROSSI & FREDY

SIZE 8
CENTRE
BACK MAIN #2
To Match:
Standard Square +
V Neck Front

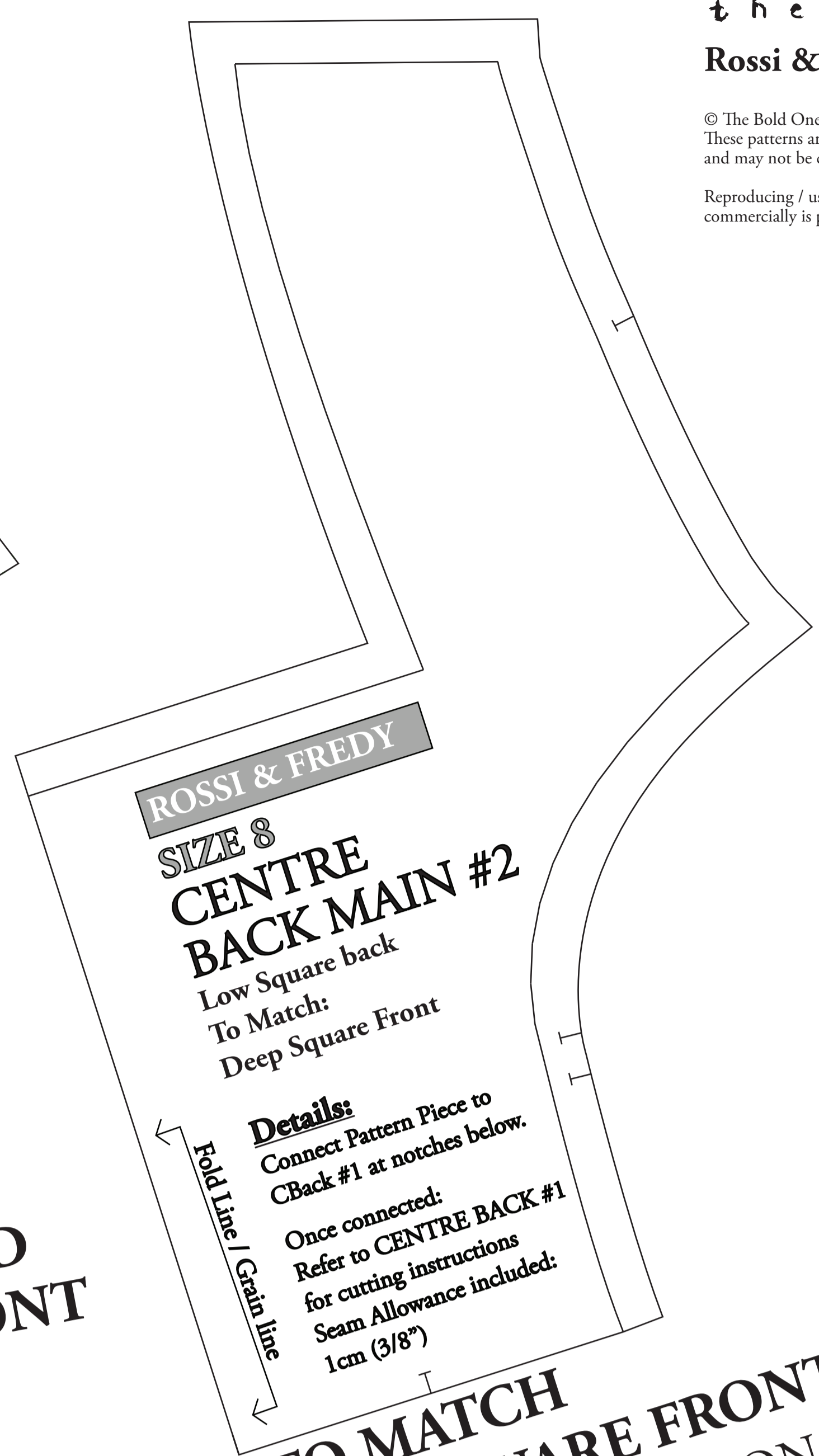
Details:
Connect Pattern Piece to
CBack #1 at notches below.

Once connected:
Refer to CENTRE BACK #1
for cutting instructions
Seam Allowance included:
1cm (3/8")

NECKLINE LINE KEY:
Low Square Back:
High Square Back:

Fold Line / Grain line

^ TO MATCH STANDARD
SQUARE & V NECK FRONT
BACK BODICE OPTIONS



ROSSI & FREDY

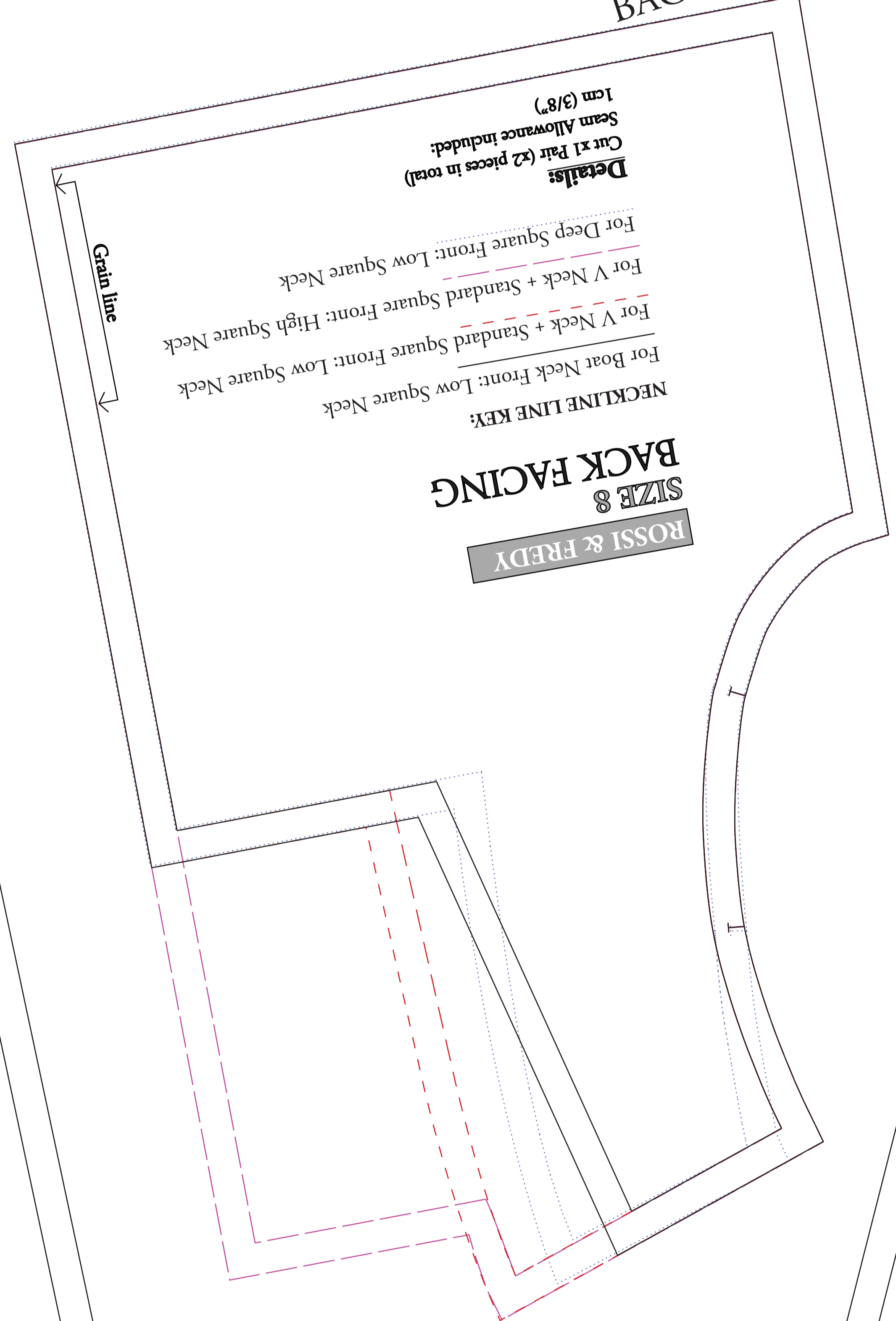
SIZE 8
CENTRE
BACK MAIN #2
Low Square back
To Match:
Deep Square Front

Details:
Connect Pattern Piece to
CBack #1 at notches below.

Once connected:
Refer to CENTRE BACK #1
for cutting instructions
Seam Allowance included:
1cm (3/8")

Fold Line / Grain line

^ TO MATCH
DEEP SQUARE FRONT
BACK BODICE OPTION



ROSSI & FREDY

SIZE 8
BACK FACING

Details:
Cut x1 Pair (x2 pieces in total)
Seam Allowance included:
1cm (3/8")

NECKLINE LINE KEY:
For Boat Neck Front: Low Square Neck
For V Neck + Standard Square Front: Low Square Neck
For V Neck + Standard Square Front: High Square Neck
For Deep Square Front: Low Square Neck

Grain line

ROSSI & FREDY

SIZE 8
CENTRE
BACK MAIN #2
Low Square back
To Match:
Boat Neck Front

Details:
Connect Pattern Piece to
CBack #1 at notches below.

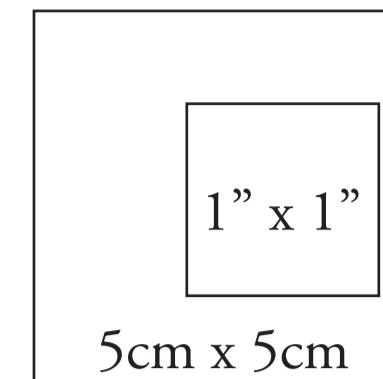
Once connected:
Refer to CENTRE BACK #1
for cutting instructions
Seam Allowance included:
1cm (3/8")

Fold Line / Grain line

^ TO MATCH BOAT
NECK FRONT
BACK BODICE OPTION

© The Bold One Workshop Patterns. These patterns are copyrighted by The Bold One Patterns and may not be copied, shared, or resold. Reproducing / using this pattern to sell items commercially is prohibited.

Seam allowance = 1cm (3/8")
Use the following boxes to check pattern has been printed to correct scale.



ROSSI & FREDY

SIZE 8

SIDE FRONT #1

Details:

Connect Pattern Piece to #2 at notches at top of pattern piece.

Once connected:

Cut x 1 Pair (2 pieces all up)

Seam Allowance included: 1cm (3/8")

Optional Leg Split notch

Grain Line

Grain Line / Fold Line

ROSSI & FREDY

SIZE 8

SHORT PUFF SLEEVE

Details:

Cut x 2 on fold

Seam Allowance included: 1cm (3/8")

LINE KEY

SHORT PUFF SLEEVE

ROSSI & FREDY

POCKET BAG

Details:

Cut x 4

Seam Allowance included: 1cm (3/8")

ROSSI & FREDY

DEEP SQUARE NECK SHOULDER TIE

Cut x 4

Seam Allowance included: 1cm (3/8")

ROSSI & FREDY

SIZE 8

LONG SHIRRED SLEEVE

Details:

Cut x 2 on fold

Seam Allowance included: 1cm (3/8")

LINE KEY

LONG SHIRRED

For Height 150 - 160cm

For Height 161 - 170cm

For Height 171cm+

For Height 171cm+ (Extra Long)

ROSSI & FREDY
SIZE 8
SIDE FRONT #2

Details:

Connect Pattern Piece to front #1 at notches below.

Once connected:

Refer to Side Front #1 for cutting instructions

Seam Allowance included: 1cm (3/8")

FREDY / ROSSI WRAP

SIZE 6 - 14

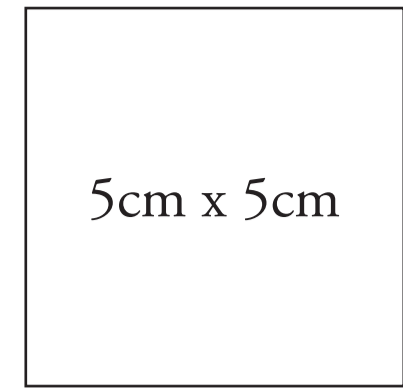
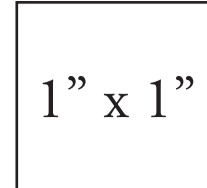
STANDARD WAIST WRAP WING

Cut x 2 Pairs (x2 up this way, x2 with this side flipped over)

Seam Allowance included: 1cm (3/8")

GRAINLINE

Use the following boxes to check pattern has been printed to correct scale.



Rossi Wrap & Fredy Wrap - Size 8

© The Bold One Workshop Patterns. These patterns are copyrighted by The Bold One Patterns and may not be copied, shared, or resold.

Reproducing / using this pattern to sell items commercially is prohibited.

