

See instructions PDF
included in your files for a
pattern piece checklist +
navigating your patterns :)

ROSSI & FREDY

SIZE 6

SIDE BACK #1

Details:
Connect Pattern Piece to #2
at notches at top of pattern piece

Once connected:
Cut x 1 Pair (2 pieces all up)
Seam Allowance included: 1cm (3/8")

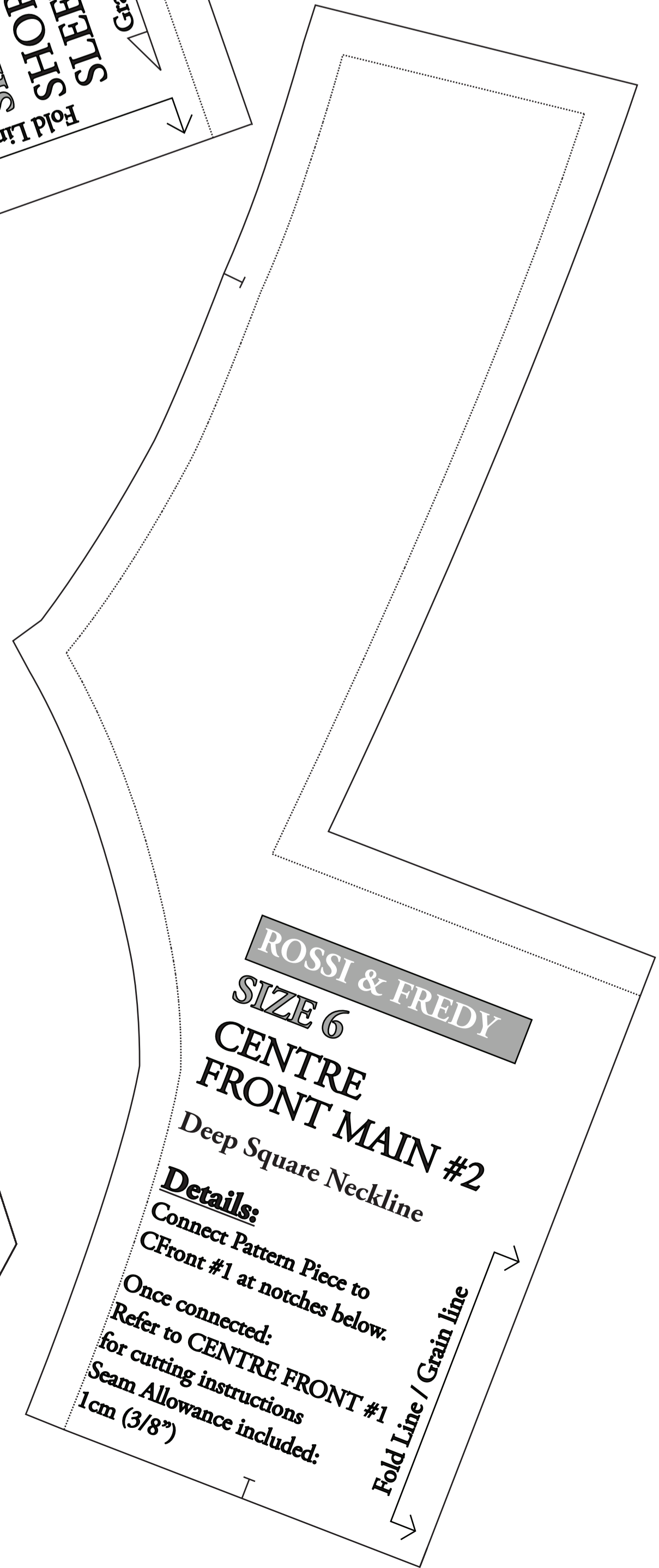
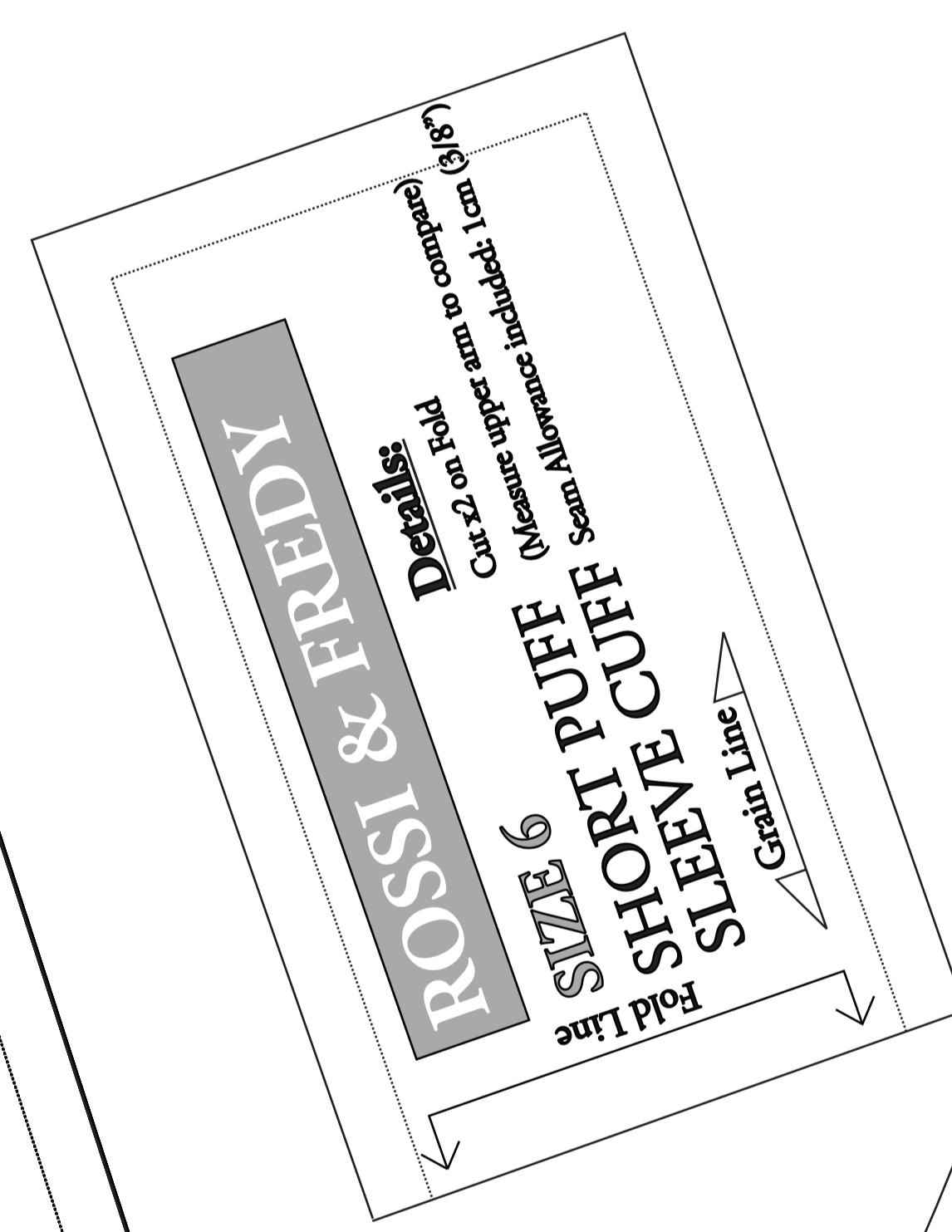
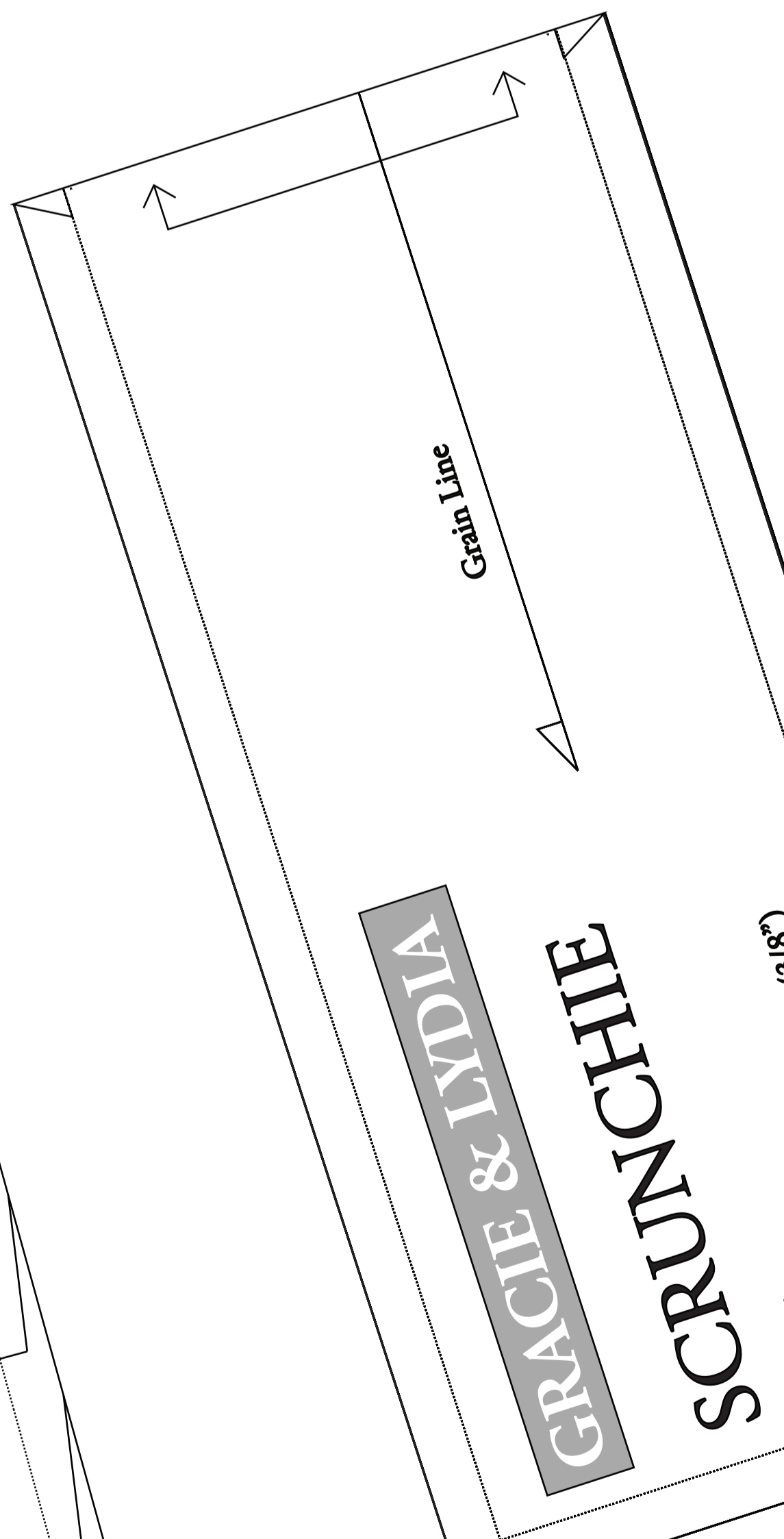
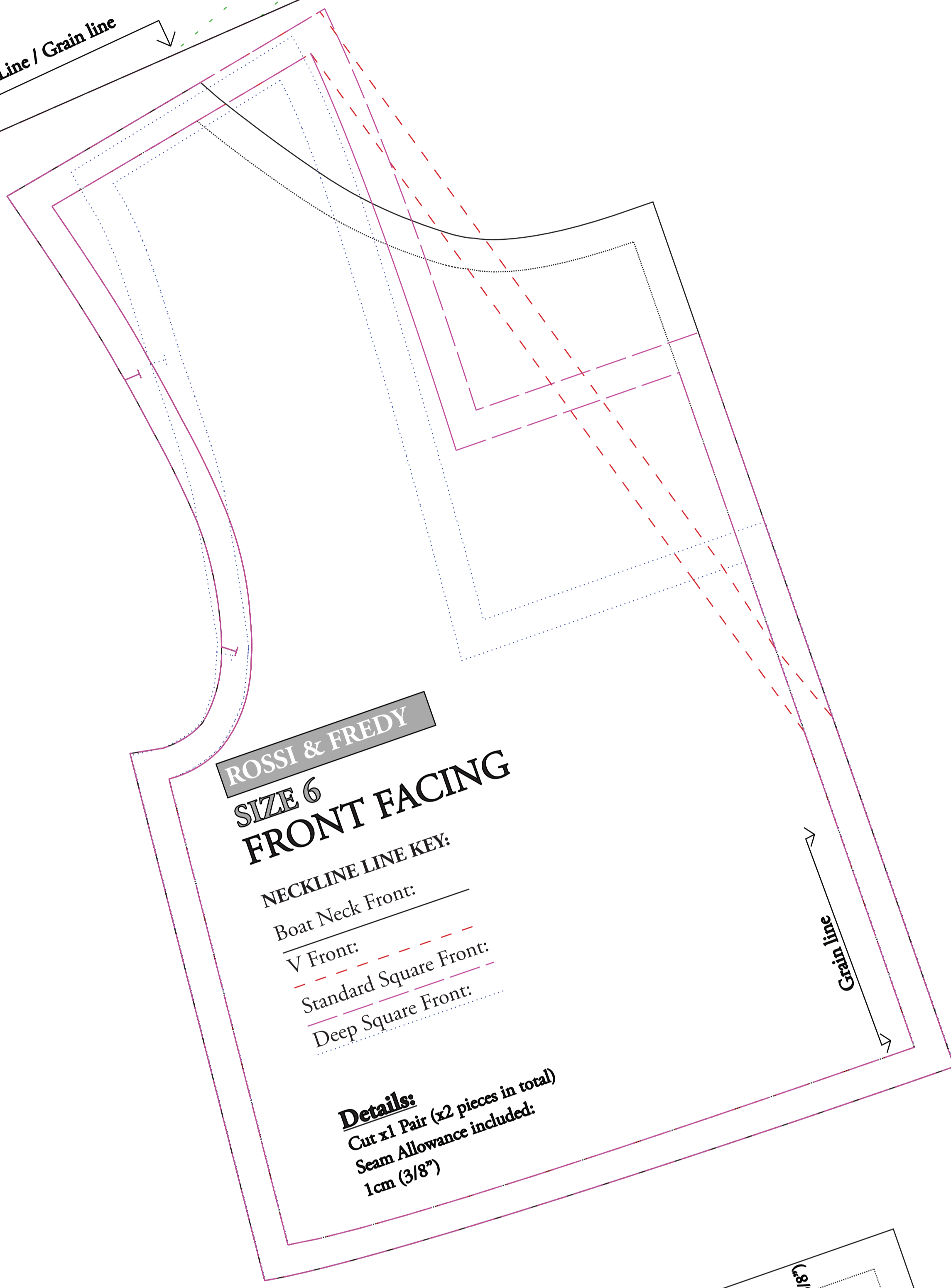
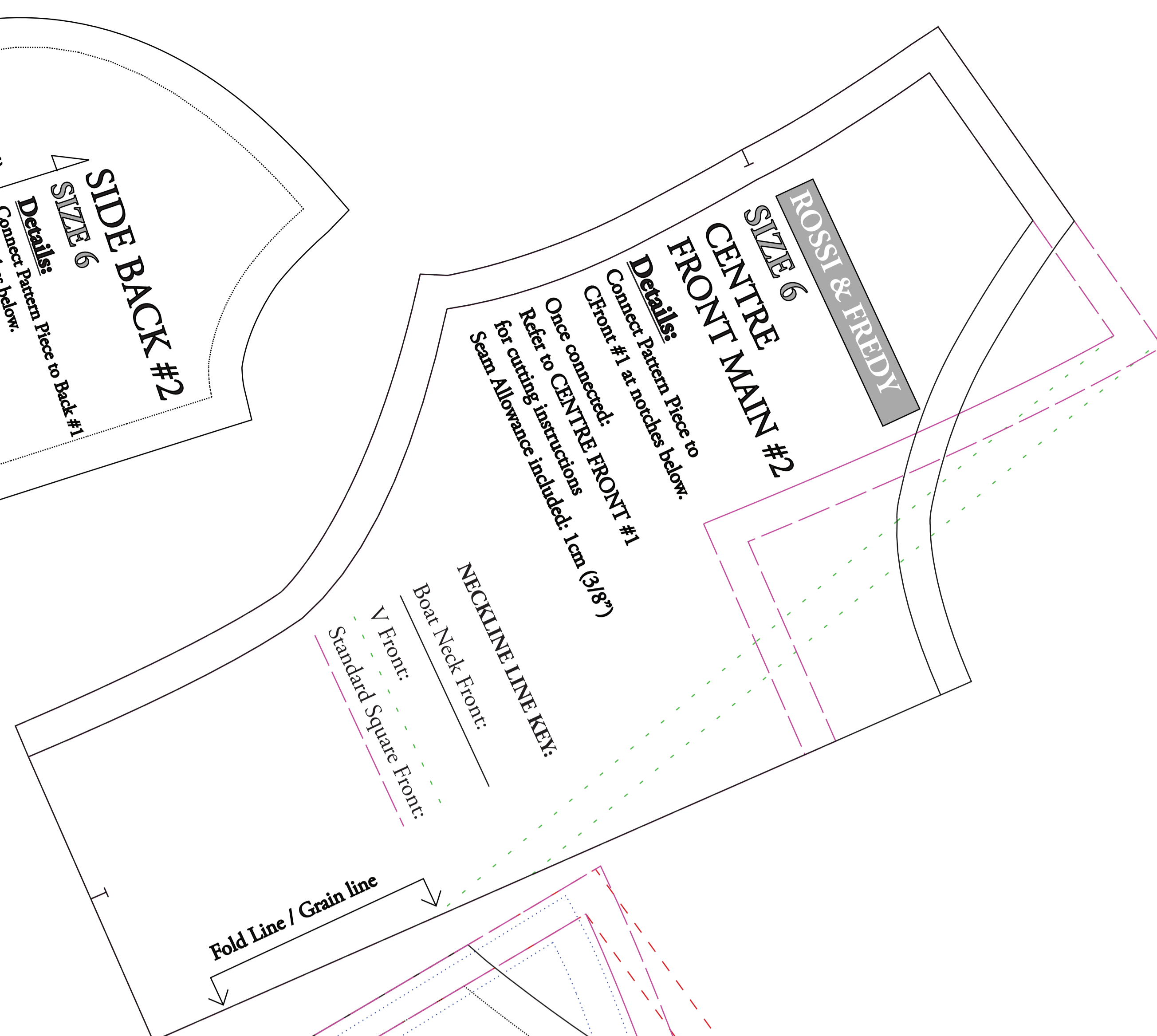
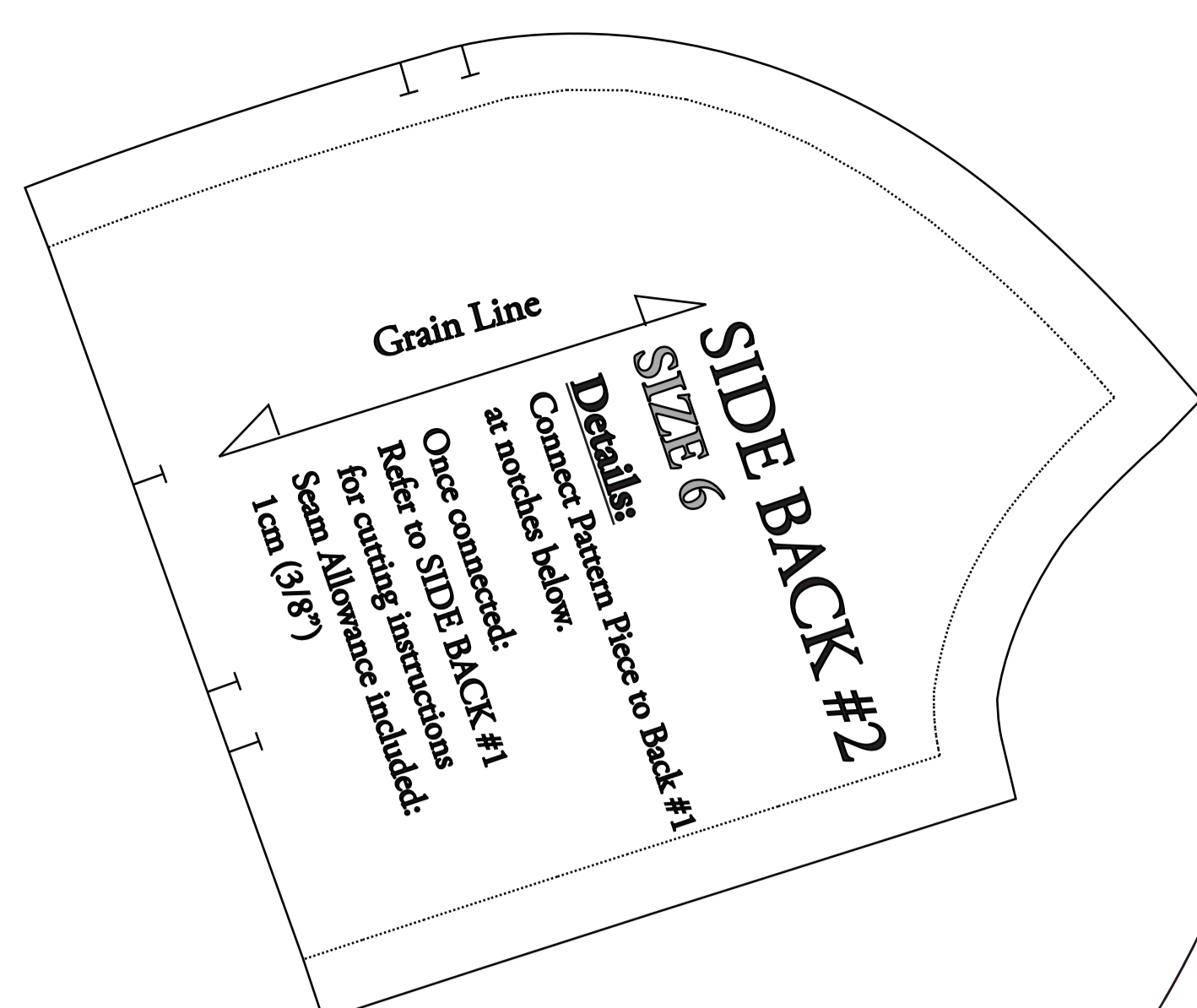
Grain Line

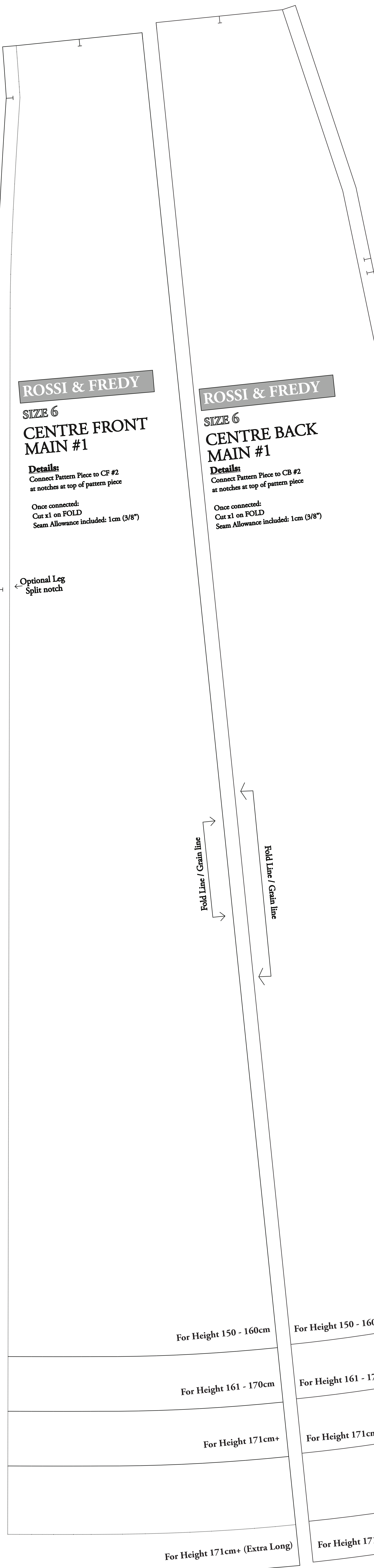
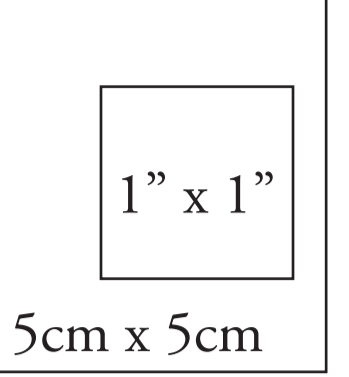
For Height 150 - 160cm

For Height 161 - 170cm

For Height 171cm+

For Height 171cm+ (Extra Long)





ROSSI & FREDY

SIZE 6
CENTRE FRONT
MAIN #1

Details:
Connect Pattern Piece to CF #2
at notches at top of pattern piece

Once connected:
Cut x1 on FOLD
Seam Allowance included: 1cm (3/8")

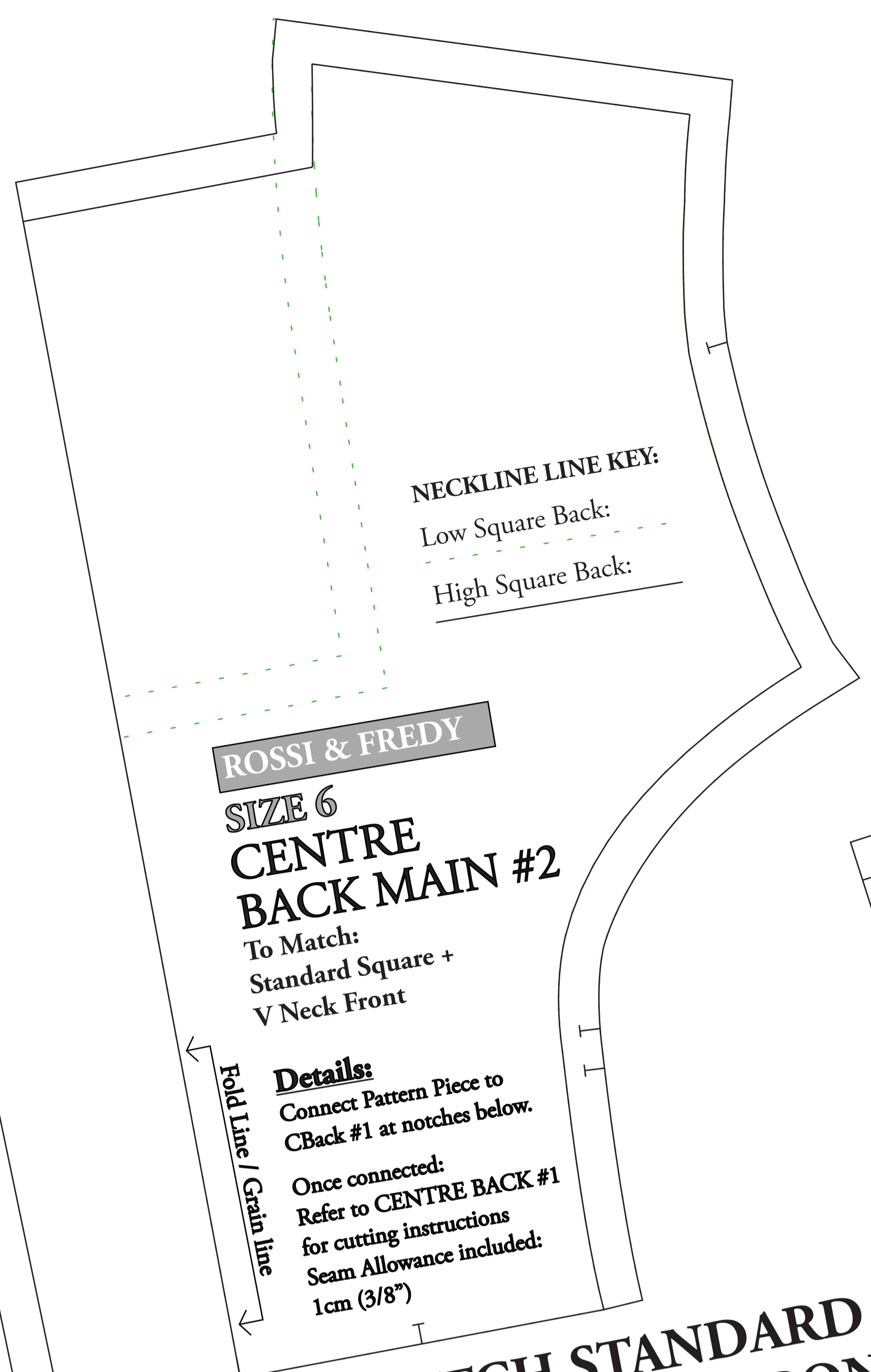
Optional Leg
Split notch

ROSSI & FREDY

SIZE 6
CENTRE BACK
MAIN #1

Details:
Connect Pattern Piece to CB #2
at notches at top of pattern piece

Once connected:
Cut x1 on FOLD
Seam Allowance included: 1cm (3/8")



ROSSI & FREDY
SIZE 6
CENTRE
BACK MAIN #2

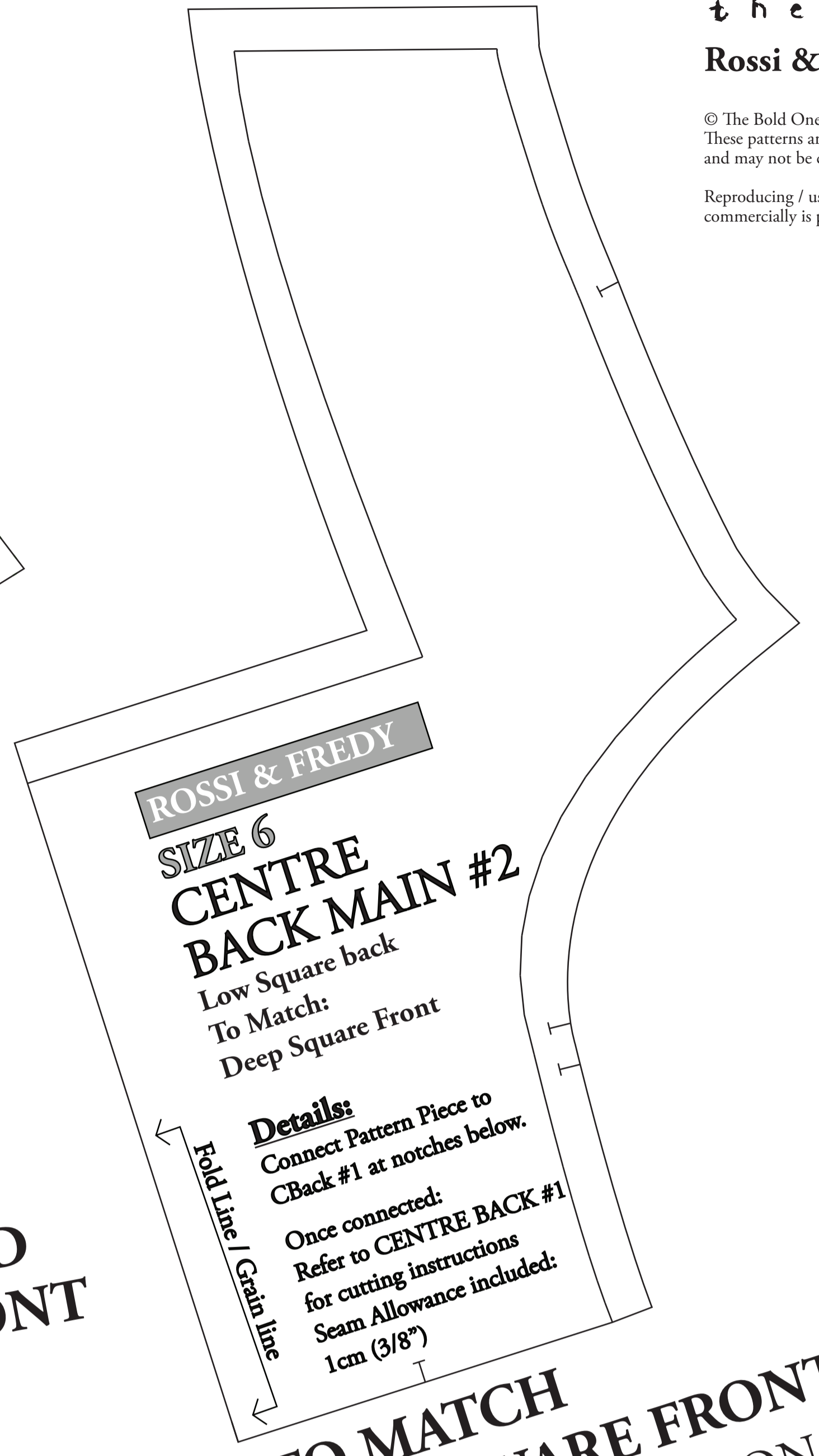
To Match:
Standard Square +
V Neck Front

Details:
Connect Pattern Piece to
CBack #1 at notches below.

Once connected:
Refer to CENTRE BACK #1
for cutting instructions
Seam Allowance included:
1cm (3/8")

NECKLINE LINE KEY:
Low Square Back:
High Square Back:

^ TO MATCH STANDARD
SQUARE & V NECK FRONT
BACK BODICE OPTIONS



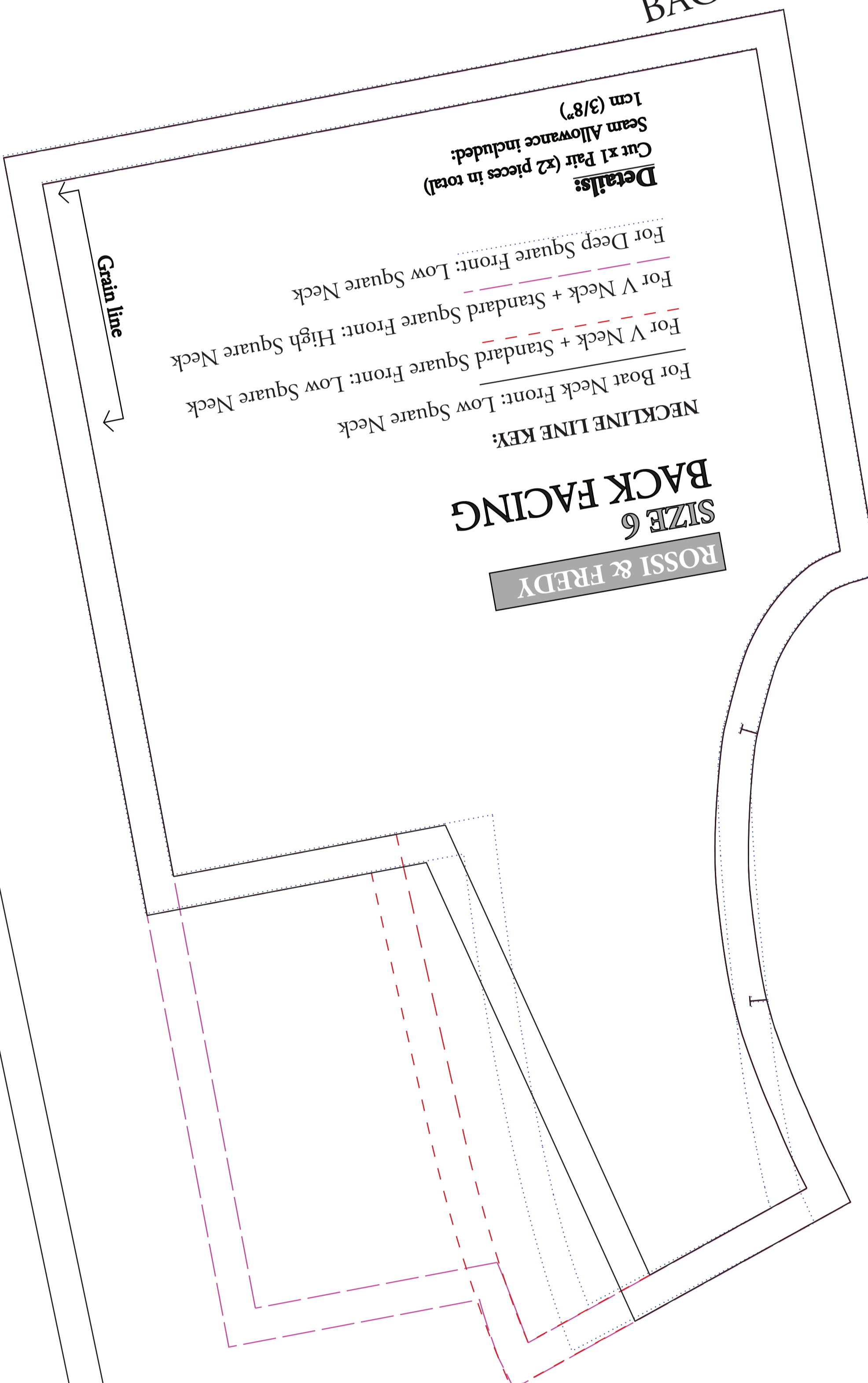
ROSSI & FREDY
SIZE 6
CENTRE
BACK MAIN #2

To Match:
Low Square back
To Match:
Deep Square Front

Details:
Connect Pattern Piece to
CBack #1 at notches below.

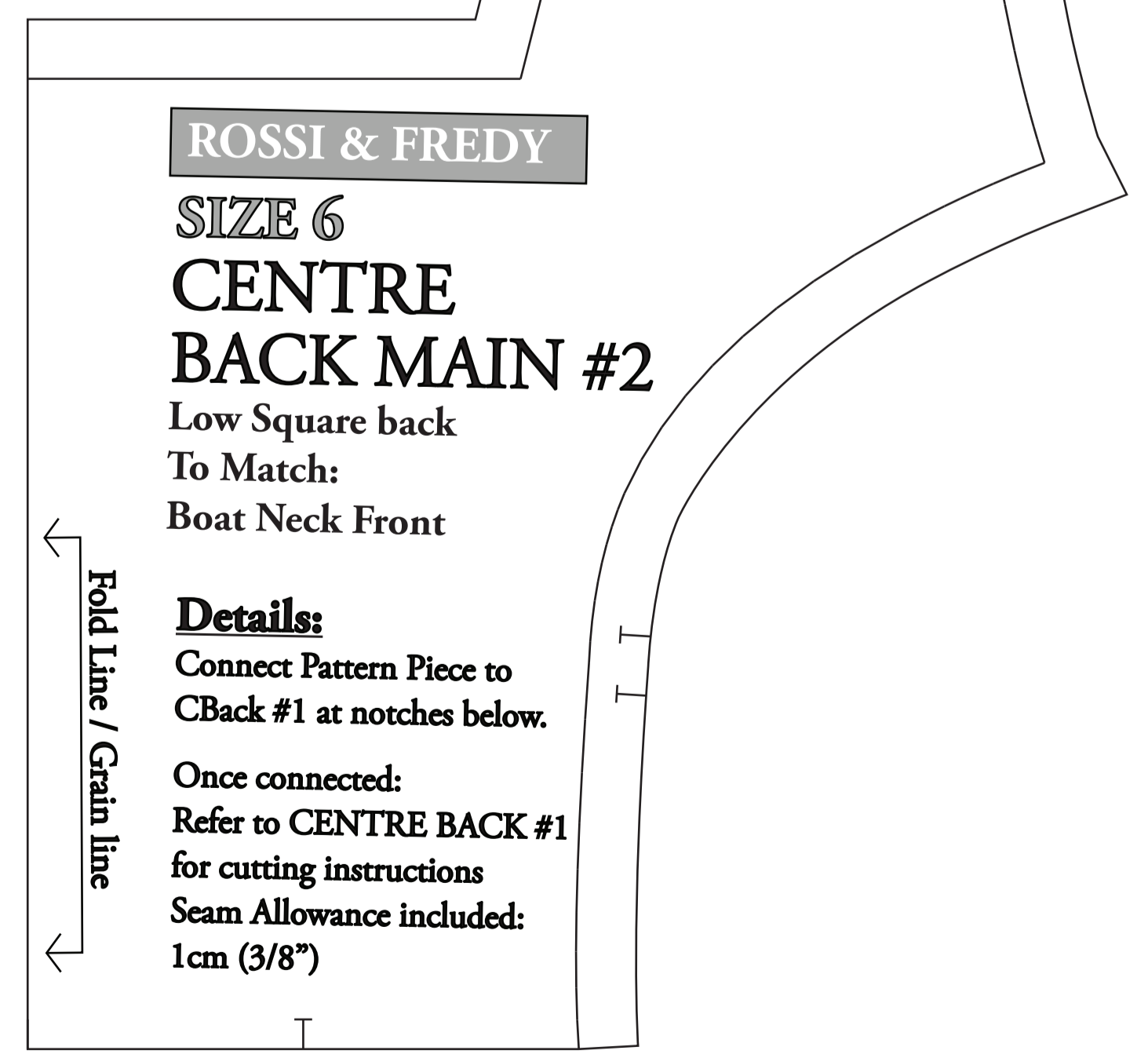
Once connected:
Refer to CENTRE BACK #1
for cutting instructions
Seam Allowance included:
1cm (3/8")

^ TO MATCH
DEEP SQUARE FRONT
BACK BODICE OPTION



ROSSI & FREDY
SIZE 6
BACK FACING

NECKLINE LINE KEY:
For Boat Neck Front: Low Square Neck
For V Neck + Standard Square Front: Low Square Neck
For V Neck + Standard Square Front: High Square Neck
For Deep Square Front: Low Square Neck
Details:
Cut x1 Pair (x2 pieces in total)
Seam Allowance included:
1cm (3/8")



ROSSI & FREDY
SIZE 6
CENTRE
BACK MAIN #2

To Match:
Low Square back
To Match:
Boat Neck Front

Details:
Connect Pattern Piece to
CBack #1 at notches below.

Once connected:
Refer to CENTRE BACK #1
for cutting instructions
Seam Allowance included:
1cm (3/8")

^ TO MATCH BOAT
NECK FRONT
BACK BODICE OPTION

For Height 150 - 160cm

For Height 150 - 160cm

For Height 161 - 170cm

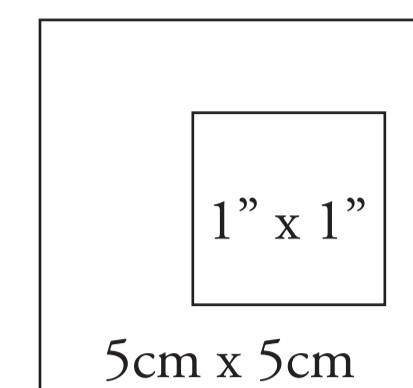
For Height 161 - 170cm

For Height 171cm+

For Height 171cm+

For Height 171cm+ (Extra Long)

For Height 171cm+ (Extra Long)



ROSSI & FREDY

SIZE 6

SIDE FRONT #1

Details:
Connect Pattern Piece to #2 at notches at top of pattern piece.

Once connected:
Cut x 1 Pair (2 pieces all up)
Seam Allowance included: 1cm (3/8")

Optional Leg Split notch

Grain Line

For Height 150 - 160cm

For Height 161 - 170cm

For Height 171cm+

For Height 171cm+ (Extra Long)



ROSSI & FREDY
SIZE 6
SHORT PUFF SLEEVE

Details:
Cut x 2 on fold
Seam Allowance included: 1cm (3/8")

LINE KEY
SHORT PUFF SLEEVE:

Grain Line / Fold Line

ROSSI & FREDY
SIZE 6
LONG SHIRRED SLEEVE

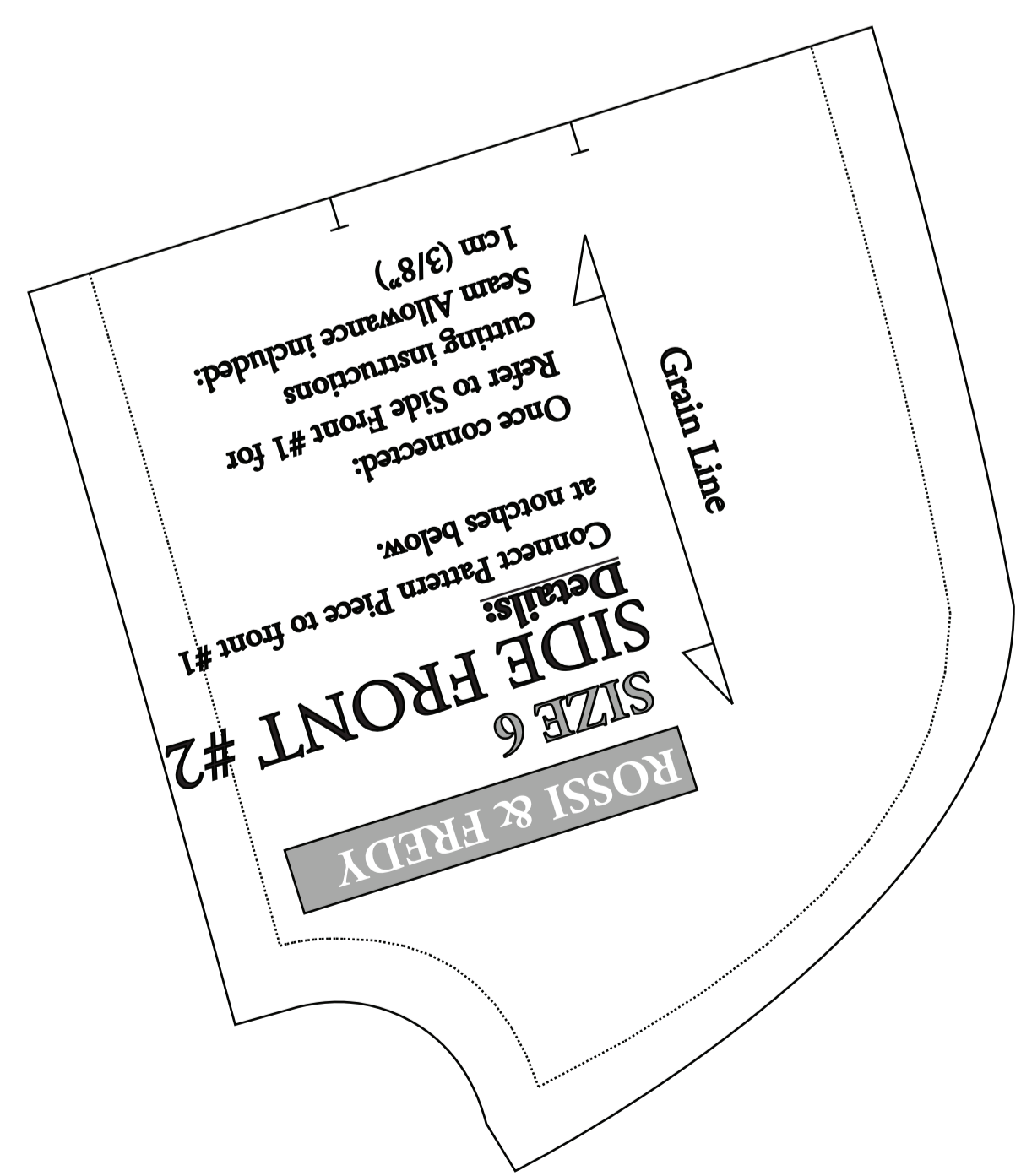
Details:
Cut x 2 on fold
Seam Allowance included: 1cm (3/8")

LINE KEY
LONG SHIRRED:

ROSSI & FREDY

DEEP SQUARE NECK SHOULDER TIE

Details:
Cut x 4
Seam Allowance included: 1cm (3/8")



FREDY / ROSSI WRAP

SIZE 6 - 14

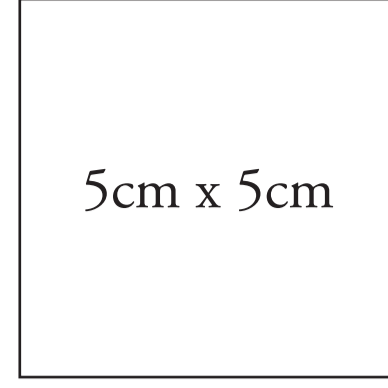
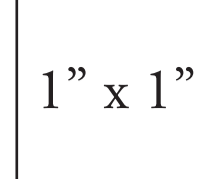
STANDARD WAIST WRAP WING

Details:
Cut x 2 Pairs (x2 up this way, x2 with this side flipped over)

Seam Allowance included: 1cm (3/8")

GRAINLINE

Use the following boxes to check pattern has been printed to correct scale.



Rossi Wrap & Fredy Wrap - Size 6

© The Bold One Workshop Patterns. These patterns are copyrighted by The Bold One Patterns and may not be copied, shared, or resold.

Reproducing / using this pattern to sell items commercially is prohibited.

