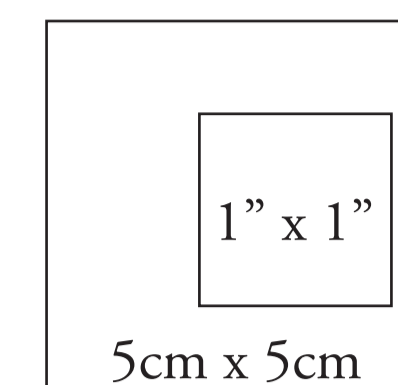


© The Bold One Workshop Patterns.  
These patterns are copyrighted by The Bold One Patterns  
and may not be copied, shared, or resold.  
Reproducing / using this pattern to sell items  
commercially is prohibited.

Seam allowance = 1cm (3/8")  
Use the following boxes to check  
pattern has been printed to correct scale.



See instructions PDF  
included in your files for a  
pattern piece checklist +  
navigating your patterns :)

**ROSSI & FREDY**

SIZE 22

## SIDE BACK #1

**Details:**  
Connect Pattern Piece to #2  
at notches at top of pattern piece

Once connected:  
Cut x 1 Pair (2 pieces all up)  
Seam Allowance included: 1cm (3/8")

Grain Line

For Height 150 - 160cm

For Height 161 - 170cm

For Height 171cm+

For Height 171cm+ (Extra Long)

Grain Line

### SIDE BACK #2

SIZE 22

**Details:**  
Connect Pattern Piece to Back #1  
at notches below.  
Once connected:  
Refer to SIDE BACK #1 for cutting instructions  
Seam Allowance included: 1cm (3/8")

**ROSSI & FREDY**

SIZE 22

## CENTRE FRONT MAIN #2

**Details:**  
Connect Pattern Piece to  
CFront #1 at notches below.

Once connected:  
Refer to CENTRE FRONT #1  
for cutting instructions  
Seam Allowance included: 1cm (3/8")

NECKLINE LINE KEY:

Boat Neck Front:

V Front:

Standard Square Front:

Fold Line / Grain line

**ROSSI & FREDY**

### FRONT FACING

SIZE 22

**Details:**  
Cut x1 Pair (x2 pieces in total)  
Seam Allowance included:  
1cm (3/8")

NECKLINE LINE KEY:  
Boat Neck Front:  
V Front:  
Standard Square Front:  
Deep Square Front:

Grain line

**ROSSI & FREDY**

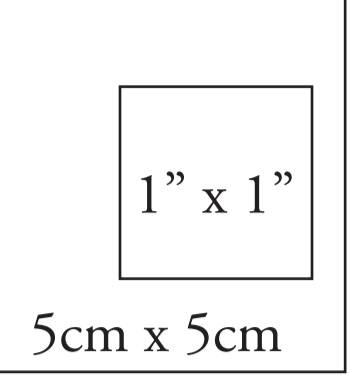
## CENTRE FRONT MAIN #2

Deep Square Neckline

**Details:**  
Connect Pattern Piece to  
CFront #1 at notches below.

Once connected:  
Refer to CENTRE FRONT #1  
for cutting instructions  
Seam Allowance included:  
1cm (3/8")

Fold Line / Grain line



**ROSSI & FREDY**  
SIZE 22  
CENTRE FRONT  
MAIN #1

**Details:**  
Connect Pattern Piece to CF #2  
at notches at top of pattern piece  
  
Once connected:  
Cut x1 on FOLD  
Seam Allowance included: 1cm (3/8")

Optional Leg  
Split notch

**ROSSI & FREDY**  
SIZE 22  
CENTRE BACK  
MAIN #1

**Details:**  
Connect Pattern Piece to CB #2  
at notches at top of pattern piece  
  
Once connected:  
Cut x1 on FOLD  
Seam Allowance included: 1cm (3/8")

**ROSSI & FREDY**  
SIZE 22  
CENTRE  
BACK MAIN #2

To Match:  
Standard Square +  
V Neck Front

**Details:**  
Connect Pattern Piece to  
CBack #1 at notches below.  
  
Once connected:  
Refer to CENTRE BACK #1  
for cutting instructions  
Seam Allowance included:  
1cm (3/8")

NECKLINE LINE KEY:  
Low Square Back:  
High Square Back:

Fold Line / Grain line

**ROSSI & FREDY**  
SIZE 22  
CENTRE  
BACK MAIN #2

To Match:  
Low Square back  
Deep Square Front

**Details:**  
Connect Pattern Piece to  
CBack #1 at notches below.  
  
Once connected:  
Refer to CENTRE BACK #1  
for cutting instructions  
Seam Allowance included:  
1cm (3/8")

Fold Line / Grain line

^ TO MATCH STANDARD  
SQUARE & V NECK FRONT  
BACK BODICE OPTIONS

^ TO MATCH  
DEEP SQUARE FRONT  
BACK BODICE OPTION

**Details:**  
Cut x1 Pair (x2 pieces in total)  
Seam Allowance included:  
1cm (3/8")

NECKLINE LINE KEY:  
For Boat Neck Front: Low Square Neck  
For V Neck + Standard Square Front: Low Square Neck  
For V Neck + Standard Square Front: High Square Neck  
For Deep Square Front: Low Square Neck

**ROSSI & FREDY**  
SIZE 22  
BACK FACING

Grain line

**ROSSI & FREDY**  
SIZE 22  
CENTRE  
BACK MAIN #2

To Match:  
Low Square back  
Boat Neck Front

**Details:**  
Connect Pattern Piece to  
CBack #1 at notches below.  
  
Once connected:  
Refer to CENTRE BACK #1  
for cutting instructions  
Seam Allowance included:  
1cm (3/8")

Fold Line / Grain line

^ TO MATCH BOAT  
NECK FRONT  
BACK BODICE OPTION

For Height 150 - 160cm

For Height 150 - 160cm

For Height 161 - 170cm

For Height 161 - 170cm

For Height 171cm+

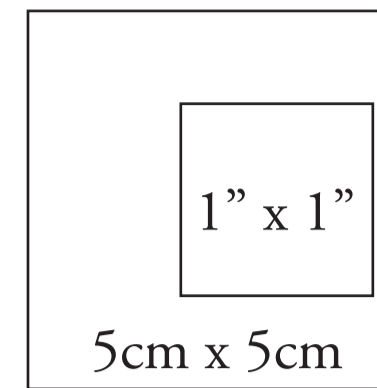
For Height 171cm+

For Height 171cm+ (Extra Long)

For Height 171cm+ (Extra Long)

Fold Line / Grain line

Fold Line / Grain line



**ROSSI & FREDY**

**SIZE 22**      **Details:**  
**SHORT PUFF SLEEVE CUFF**      Cut x2 on Fold  
 (Measure upper arm to compare)      Seam Allowance included: 1cm (3/8")

Fold Line

Grain Line

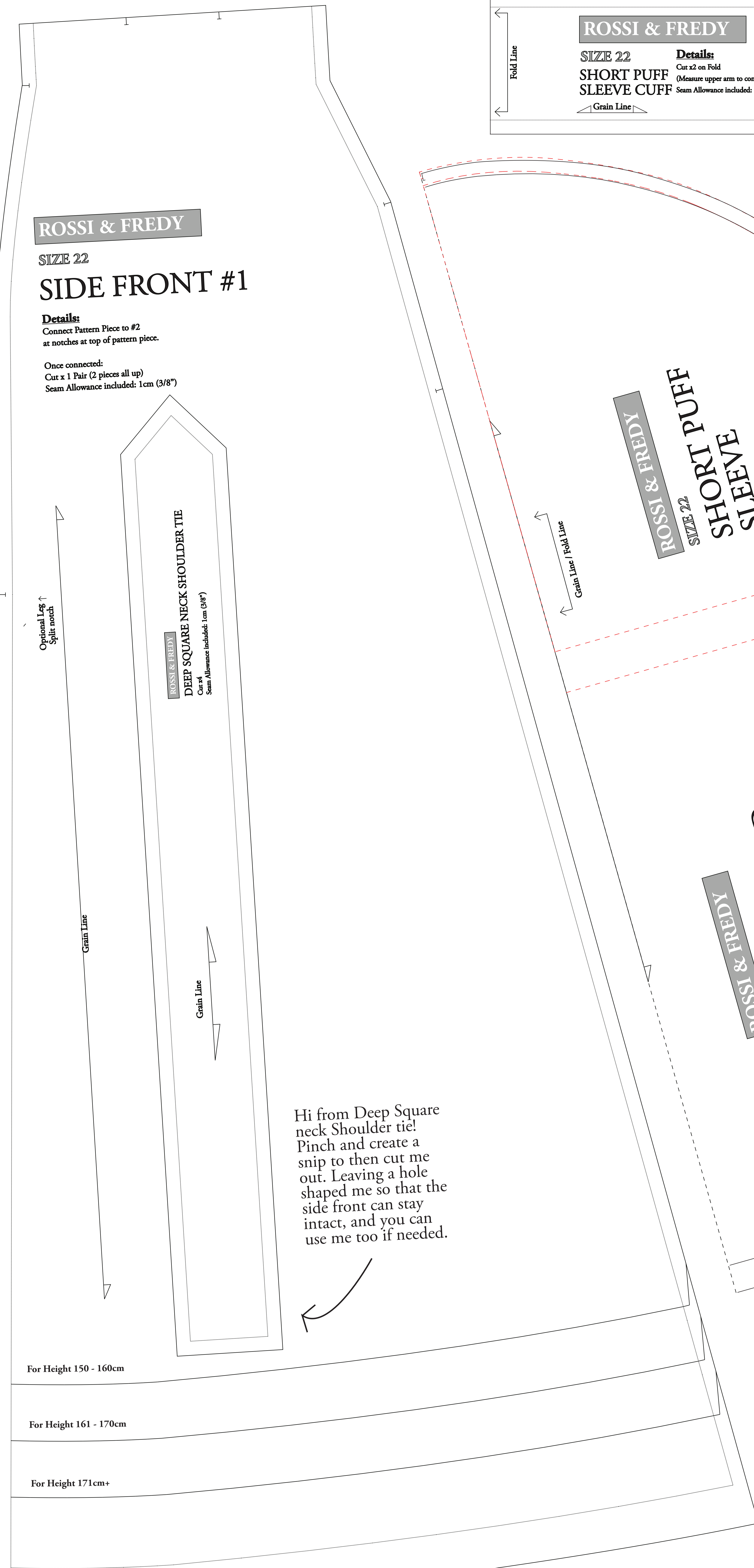
**ROSSI & FREDY**

**SIZE 22**

**SIDE FRONT #1**

**Details:**  
 Connect Pattern Piece to #2 at notches at top of pattern piece.

Once connected:  
 Cut x 1 Pair (2 pieces all up)  
 Seam Allowance included: 1cm (3/8")



Hi from Deep Square neck Shoulder tie!  
 Pinch and create a snip to then cut me out. Leaving a hole shaped me so that the side front can stay intact, and you can use me too if needed.

For Height 150 - 160cm

For Height 161 - 170cm

For Height 171cm+

For Height 171cm+ (Extra Long)

**ROSSI & FREDY**

**SIZE 22**

**SHORT PUFF SLEEVE**

**Details:**  
 Cur x 2 on fold  
 Seam Allowance included: 1cm (3/8")

Grain Line / Fold Line

**LINE KEY**  
 SHORT PUFF SLEEVE

**ROSSI & FREDY**

**SIZE 22**

**LONG SHIRRED SLEEVE**

**Details:**  
 Cur x 2 on fold  
 Seam Allowance included: 1cm (3/8")

**LINE KEY**  
 LONG SHIRRED

**ROSSI & FREDY**

**BACK NECK TIE**

**Details:**  
 Cur x 2  
 Seam Allowance: 1cm (3/8")

**ROSSI & FREDY**

**SIZE 22**

**SIDE FRONT #2**

**Details:**  
 Connect Pattern Piece to front #1 at notches below.  
 Refer to SIDE FRONT #1 for cutting instructions  
 Seam Allowance included: 1cm (3/8")

Grain Line

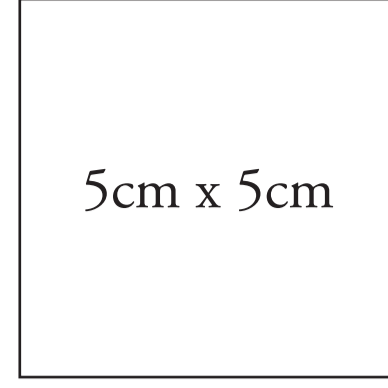
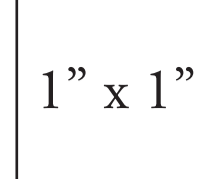
**ROSSI & FREDY**

**Standard Waist Wrap Add on**

**SIZE 16- 30**

**Details:**  
 Cut x 2 Pairs (all up x4 pieces)  
 Seam Allowance Included: 1cm (3/8")

Use the following boxes to check pattern has been printed to correct scale.



Rossi Wrap & Fredy Wrap - Size 22

© The Bold One Workshop Patterns. These patterns are copyrighted by The Bold One Patterns and may not be copied, shared, or resold.

Reproducing / using this pattern to sell items commercially is prohibited.

