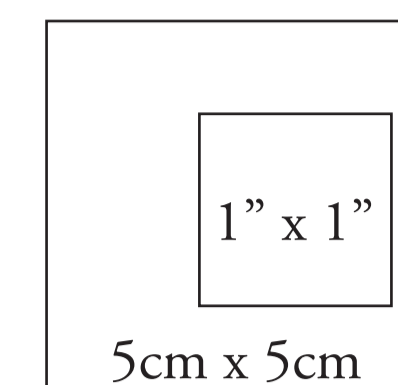
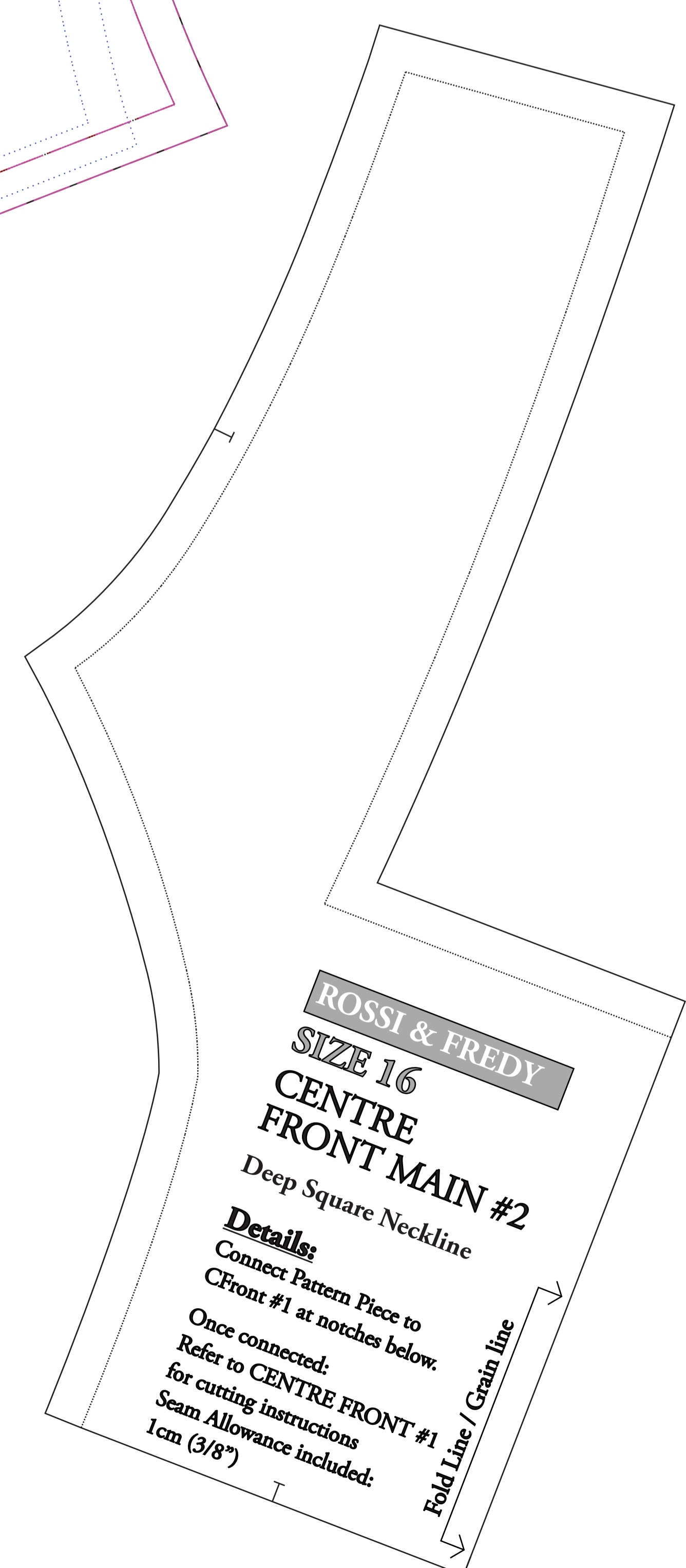
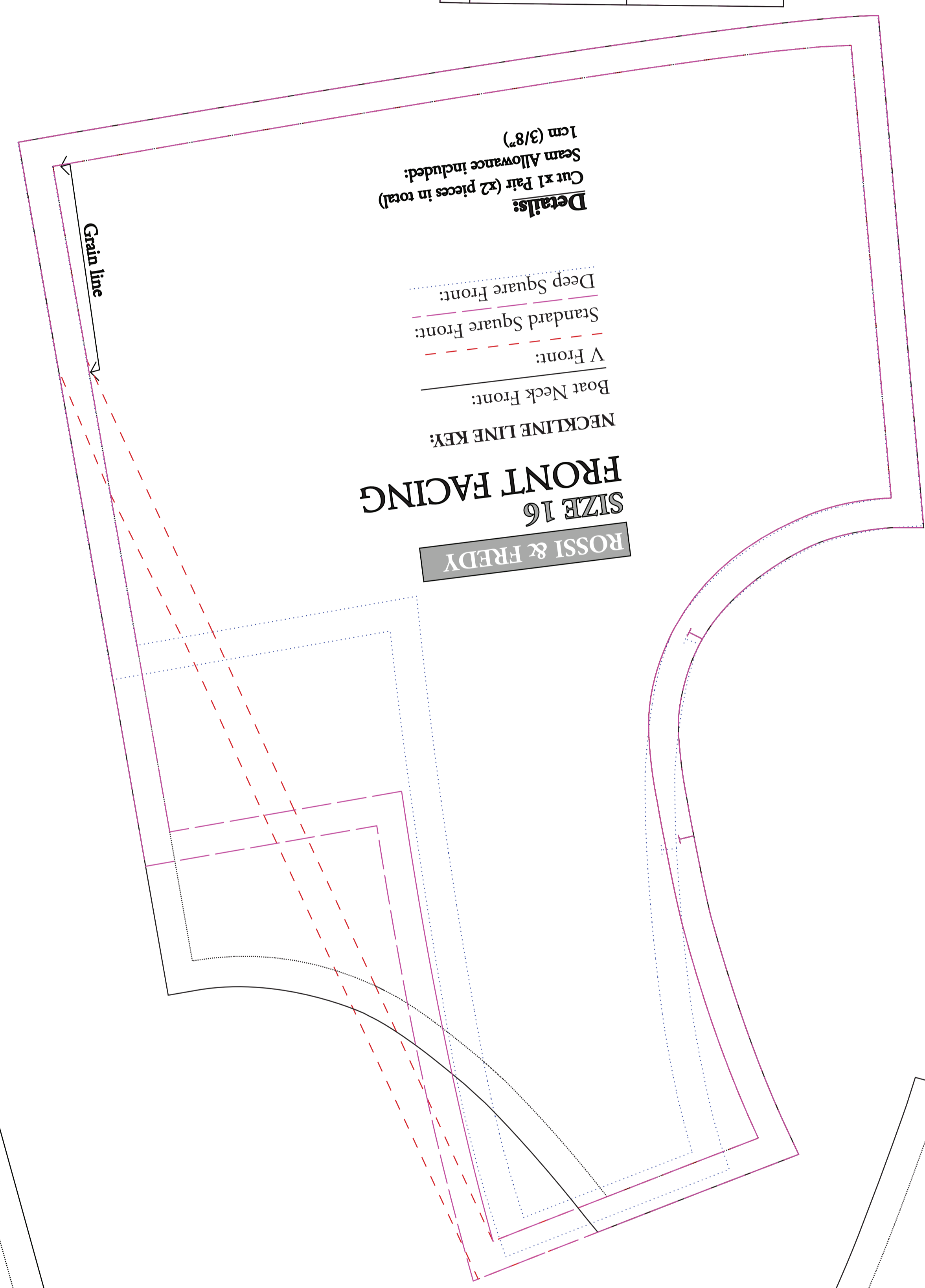
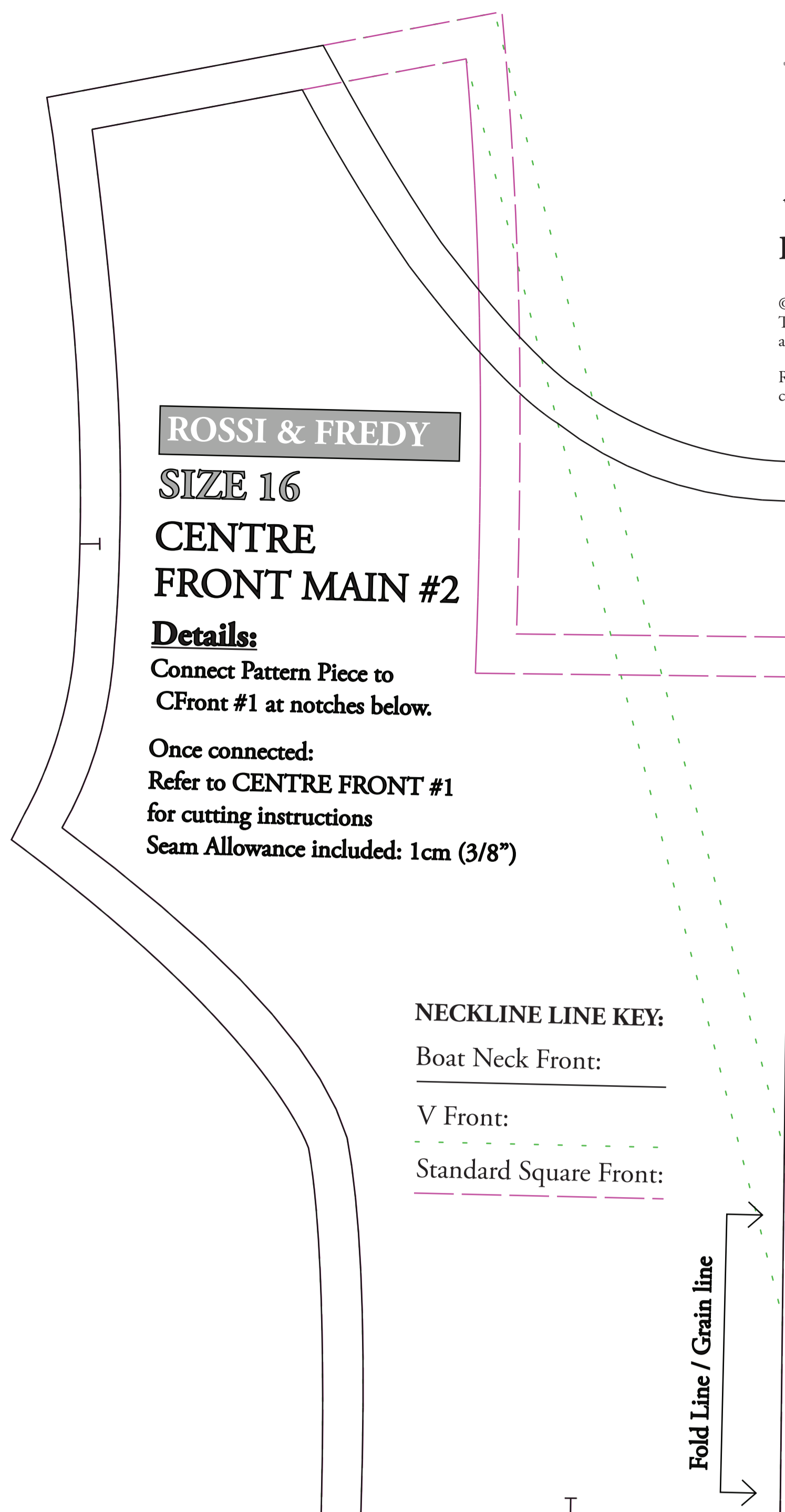
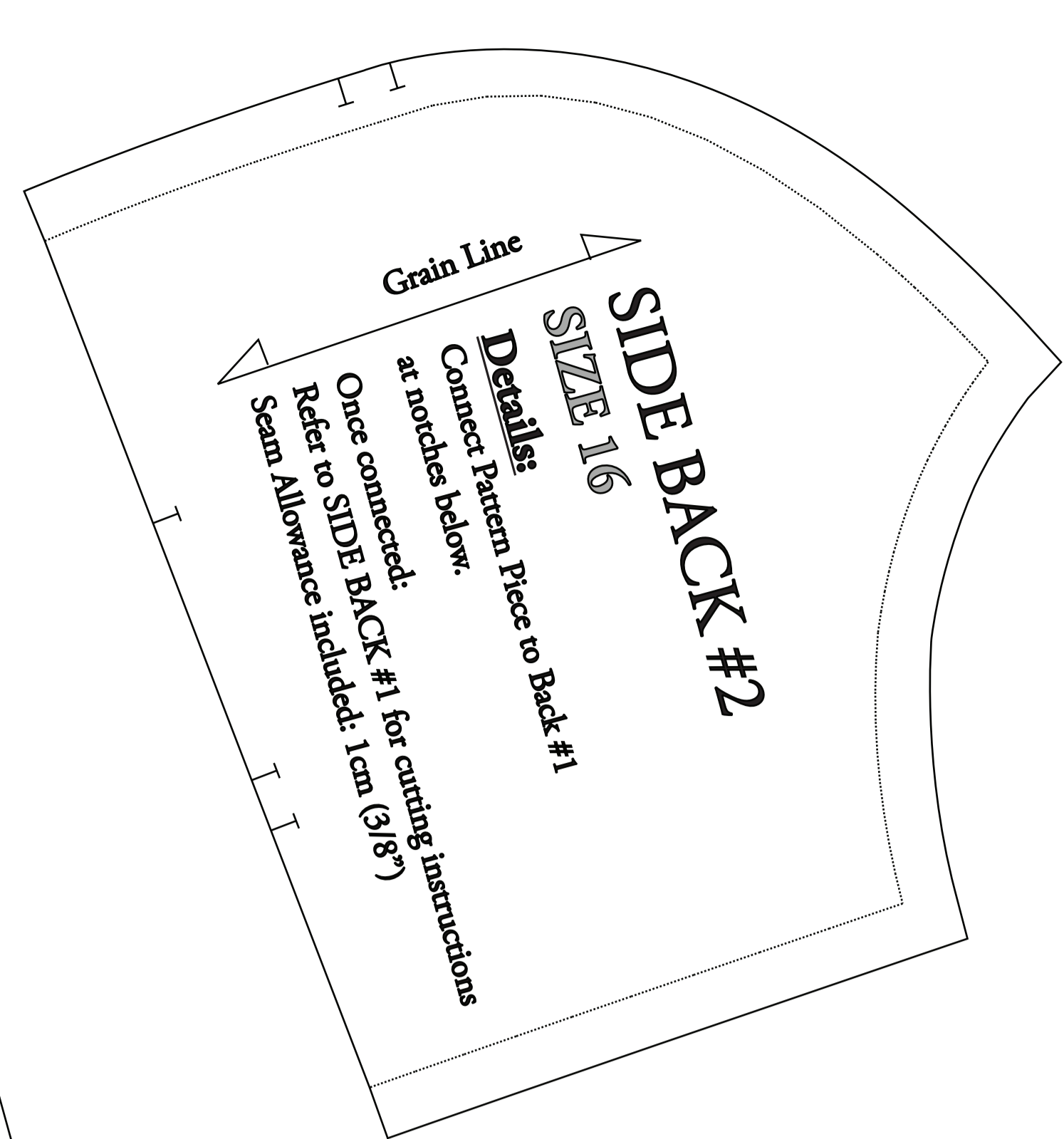
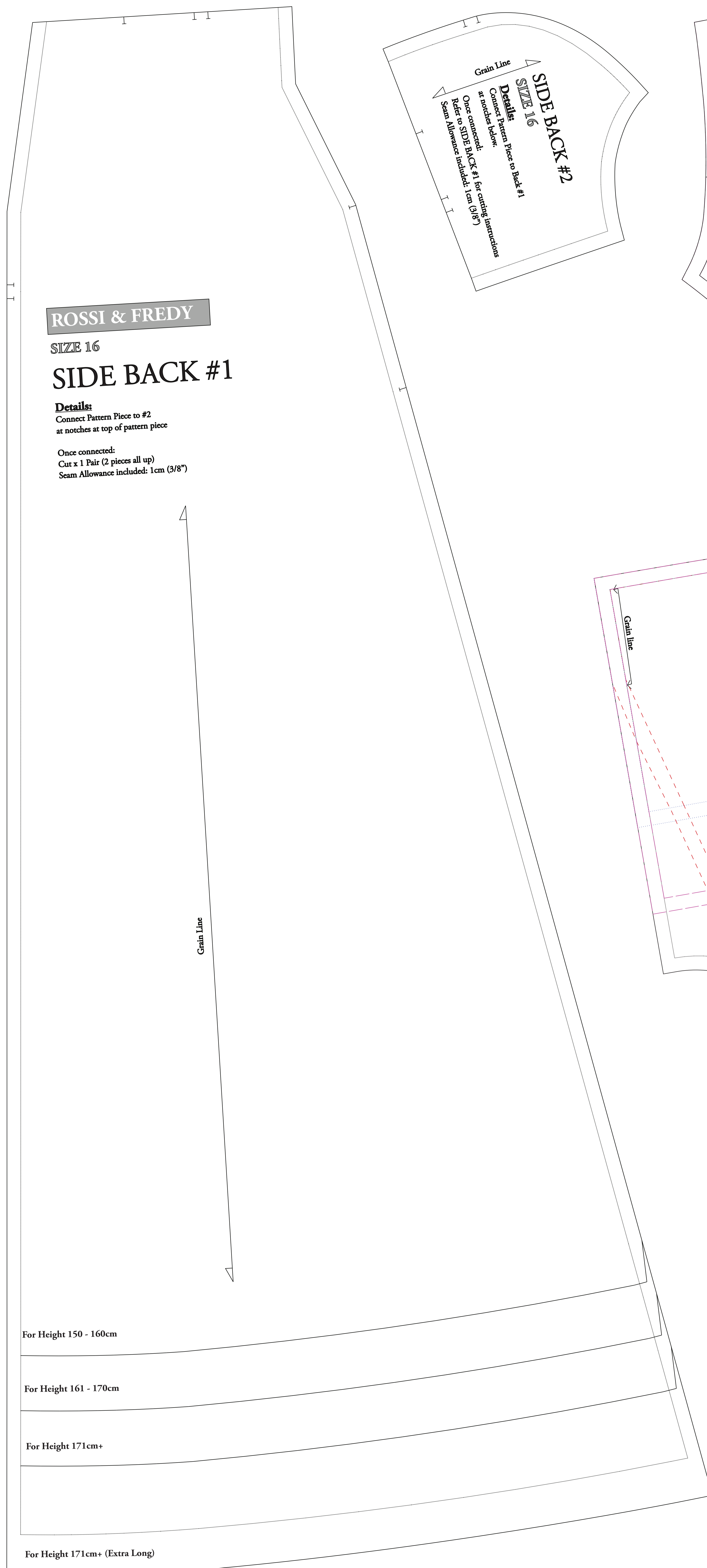


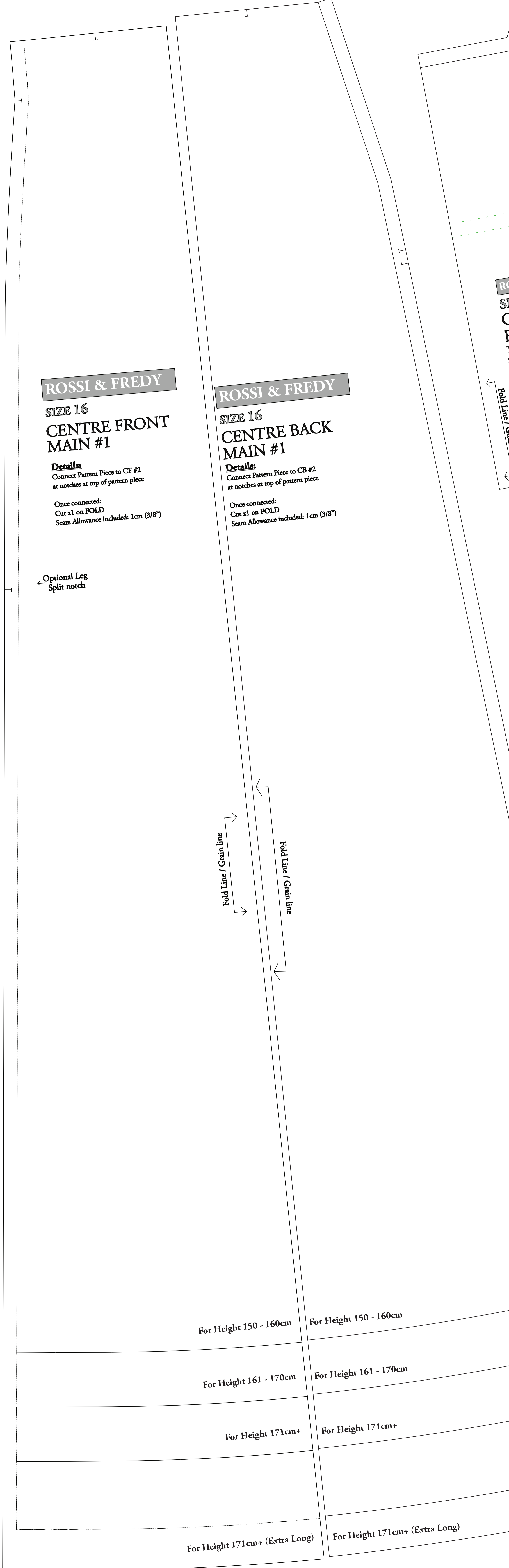
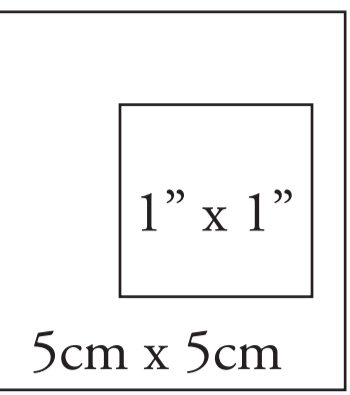
© The Bold One Workshop Patterns.
These patterns are copyrighted by The Bold One Patterns
and may not be copied, shared, or resold.
Reproducing / using this pattern to sell items
commercially is prohibited.

Seam allowance = 1cm (3/8")
Use the following boxes to check
pattern has been printed to correct scale.



See instructions PDF
included in your files for a
pattern piece checklist +
navigating your patterns :)





ROSSI & FREDY
SIZE 16
CENTRE FRONT
MAIN #1

Details:
Connect Pattern Piece to CF #2
at notches at top of pattern piece

Once connected:
Cut x1 on FOLD
Seam Allowance included: 1cm (3/8")

Optional Leg
Split notch

ROSSI & FREDY
SIZE 16
CENTRE BACK
MAIN #1

Details:
Connect Pattern Piece to CB #2
at notches at top of pattern piece

Once connected:
Cut x1 on FOLD
Seam Allowance included: 1cm (3/8")

Fold Line / Grain line

Fold Line / Grain line

For Height 150 - 160cm

For Height 150 - 160cm

For Height 161 - 170cm

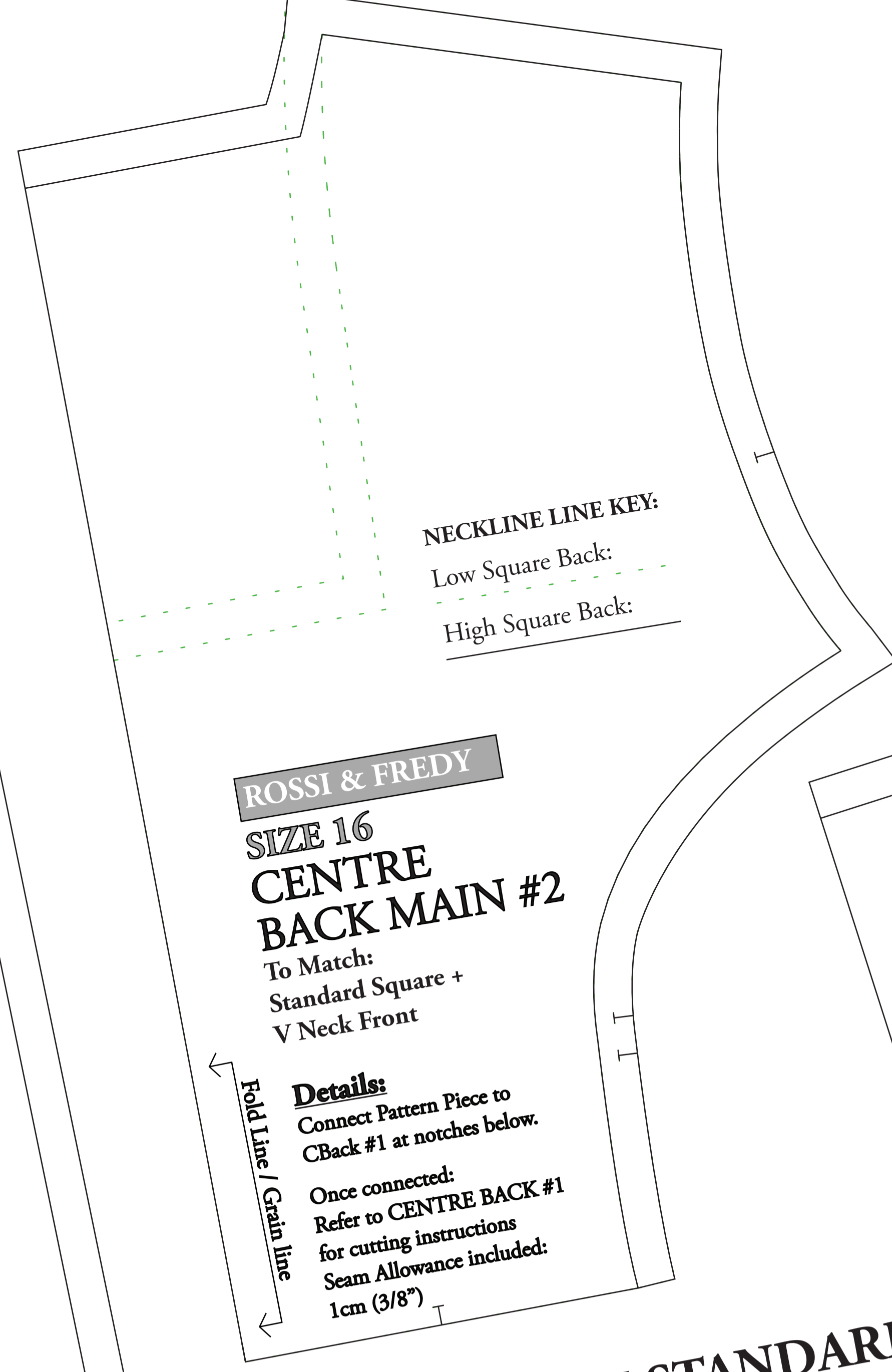
For Height 161 - 170cm

For Height 171cm+

For Height 171cm+

For Height 171cm+ (Extra Long)

For Height 171cm+ (Extra Long)



ROSSI & FREDY
SIZE 16
CENTRE
BACK MAIN #2

To Match:
Standard Square +
V Neck Front

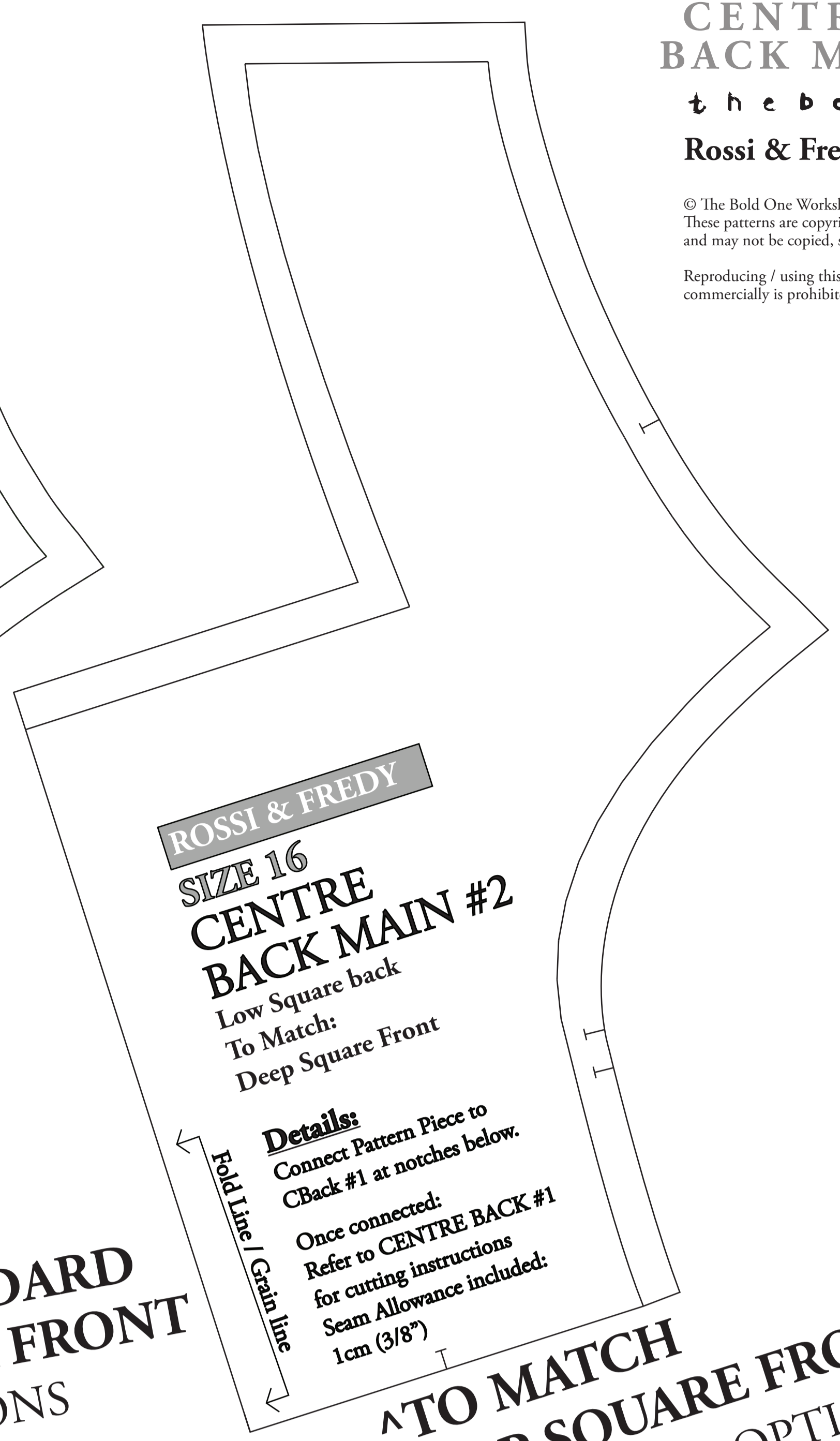
Details:
Connect Pattern Piece to
CBack #1 at notches below.

Once connected:
Refer to CENTRE BACK #1
for cutting instructions
Seam Allowance included:
1cm (3/8")

NECKLINE LINE KEY:
Low Square Back:
High Square Back:

Fold Line / Grain line

^ TO MATCH STANDARD
SQUARE & V NECK FRONT
BACK BODICE OPTIONS



ROSSI & FREDY
SIZE 16
CENTRE
BACK MAIN #2

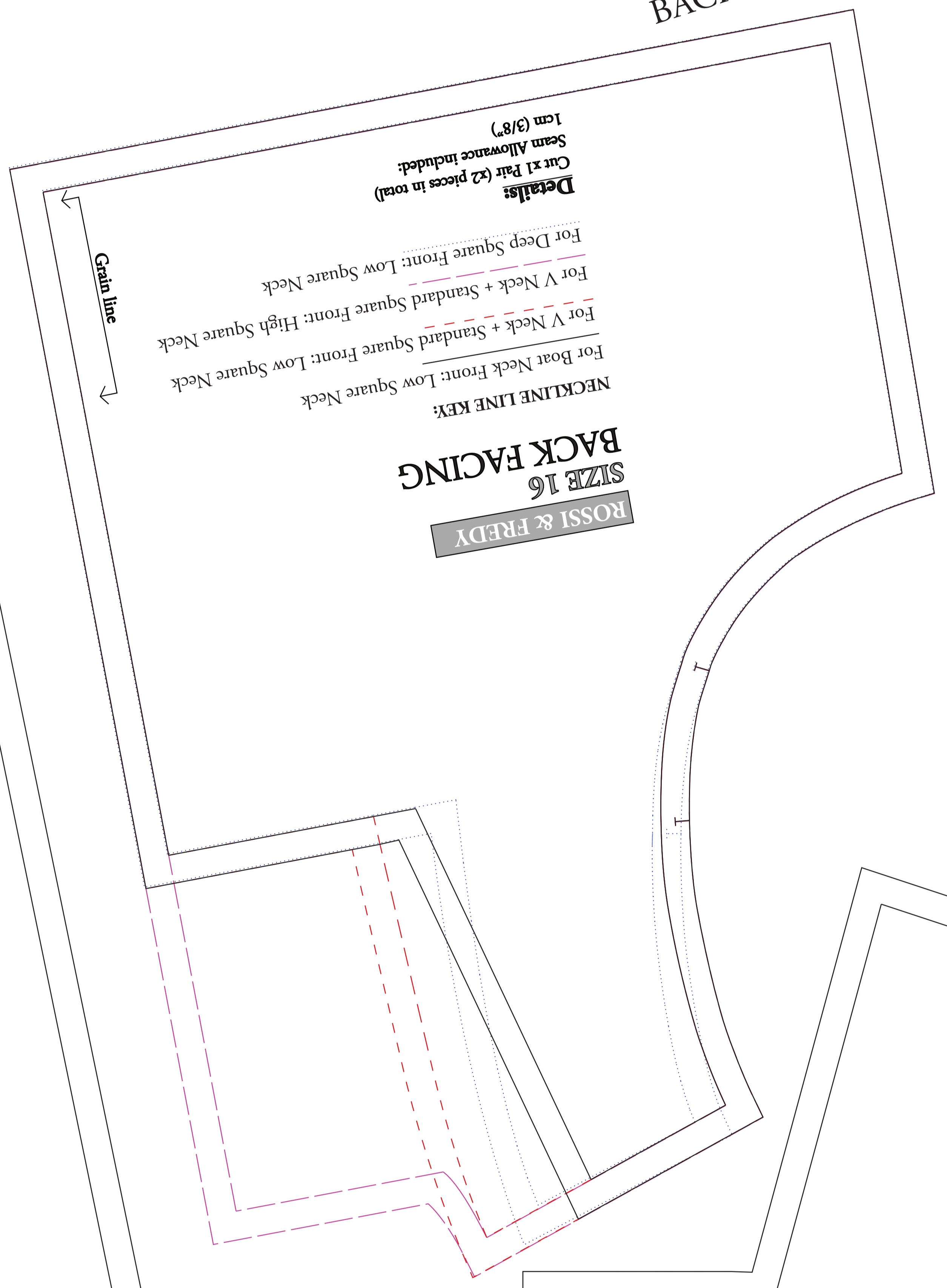
To Match:
Low Square back
Deep Square Front

Details:
Connect Pattern Piece to
CBack #1 at notches below.

Once connected:
Refer to CENTRE BACK #1
for cutting instructions
Seam Allowance included:
1cm (3/8")

Fold Line / Grain line

^ TO MATCH
DEEP SQUARE FRONT
BACK BODICE OPTION



ROSSI & FREDY
SIZE 16
BACK FACING

NECKLINE LINE KEY:
For Boat Neck Front: Low Square Neck
For V Neck + Standard Square Front: Low Square Neck
For V Neck + Standard Square Front: High Square Neck
For Deep Square Front: Low Square Neck

Details:
Cut x1 Pair (x2 pieces in total)
Seam Allowance included:
1cm (3/8")

Grain line

ROSSI & FREDY
SIZE 16
CENTRE
BACK MAIN #2

To Match:
Low Square back
Boat Neck Front

Details:
Connect Pattern Piece to
CBack #1 at notches below.

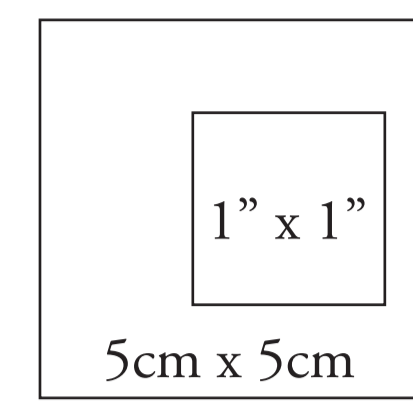
Once connected:
Refer to CENTRE BACK #1
for cutting instructions
Seam Allowance included:
1cm (3/8")

Fold Line / Grain line

^ TO MATCH BOAT
NECK FRONT
BACK BODICE OPTION

© The Bold One Workshop Patterns. These patterns are copyrighted by The Bold One Patterns and may not be copied, shared, or resold. Reproducing / using this pattern to sell items commercially is prohibited.

Seam allowance = 1cm (3/8") Use the following boxes to check pattern has been printed to correct scale.



ROSSI & FREDY

SIZE 16

SHORT PUFF SLEEVE CUFF

Details:
Cut x2 on Fold
(Measure upper arm to compare)
Seam Allowance included: 1cm (3/8")

Fold Line

Grain Line

ROSSI & FREDY

POCKET BAG

Details:
Cut x 4
Seam Allowance included: 1cm (3/8")

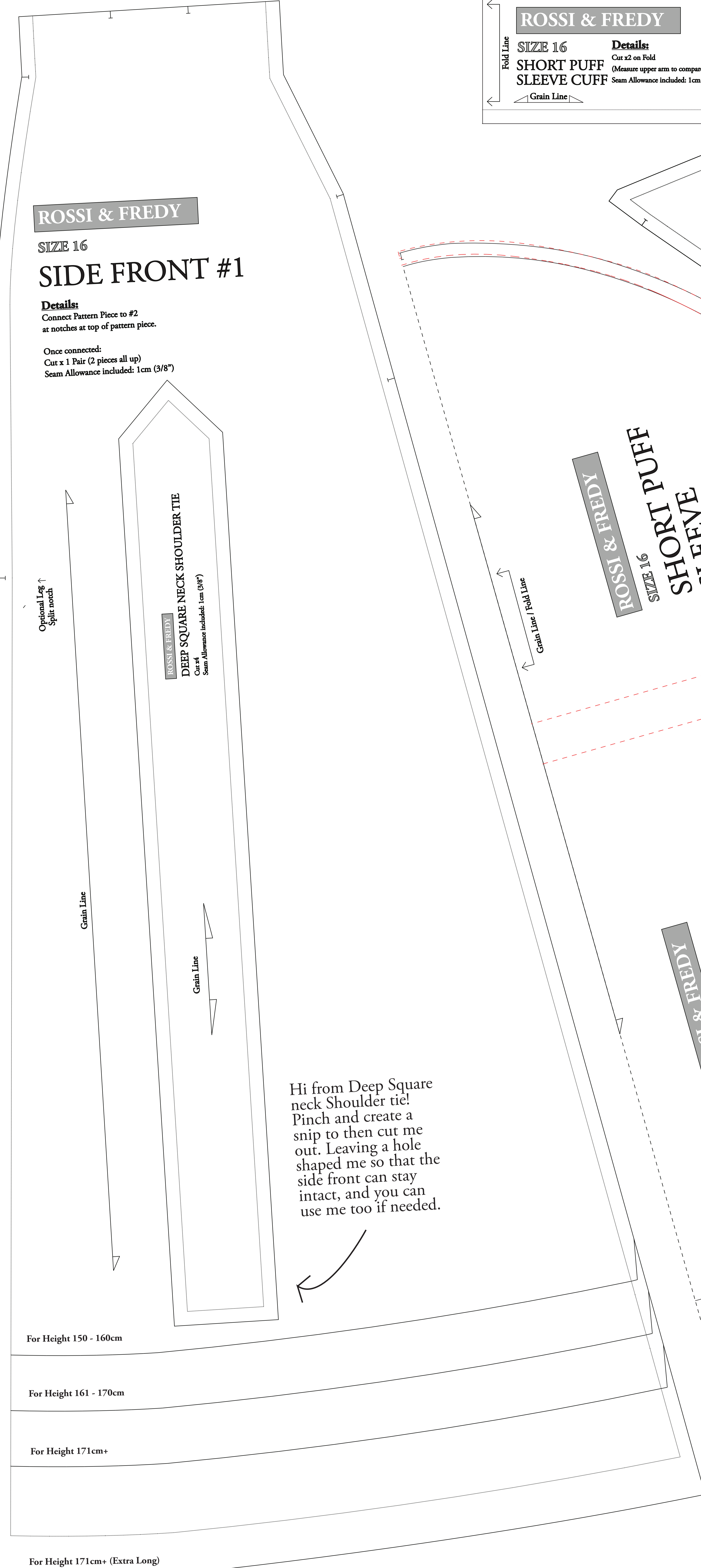
ROSSI & FREDY

SIZE 16

SIDE FRONT #1

Details:
Connect Pattern Piece to #2 at notches at top of pattern piece.

Once connected:
Cut x 1 Pair (2 pieces all up)
Seam Allowance included: 1cm (3/8")



ROSSI & FREDY

DEEP SQUARE NECK SHOULDER TIE

Details:
Cut x 4
Seam Allowance included: 1cm (3/8")

ROSSI & FREDY

SIZE 16

SHORT PUFF SLEEVE

Details:
Cut x 2 on fold
Seam Allowance included: 1cm (3/8")

LINE KEY

SHORT PUFF SLEEVE

ROSSI & FREDY

SIZE 16

LONG SHIRRED SLEEVE

Details:
Cut x 2 on fold
Seam Allowance included: 1cm (3/8")

LINE KEY

LONG SHIRRED

ROSSI & FREDY

BACK NECK TIE

Details:
Cut x 2
Seam Allowance: 1cm (3/8")

Hi from Deep Square neck Shoulder tie! Pinch and create a snip to then cut me out. Leaving a hole shaped me so that the side front can stay intact, and you can use me too if needed.

ROSSI & FREDY

SIZE 16

SIDE FRONT #2

Details:
Connect Pattern Piece to front #1 at notches below.
Once connected: Refer to Side Front #1 for cutting instructions
Seam Allowance included: 1cm (3/8")

For Height 150 - 160cm

For Height 161 - 170cm

For Height 171cm+

For Height 171cm+ (Extra Long)

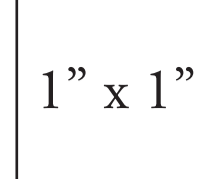
ROSSI & FREDY

Standard Waist Wrap Add on

SIZE 16- 30

Details:
Cut x 2 Pairs (all up x4 pieces)
Seam Allowance Included: 1cm (3/8")

Use the following boxes to check pattern has been printed to correct scale.

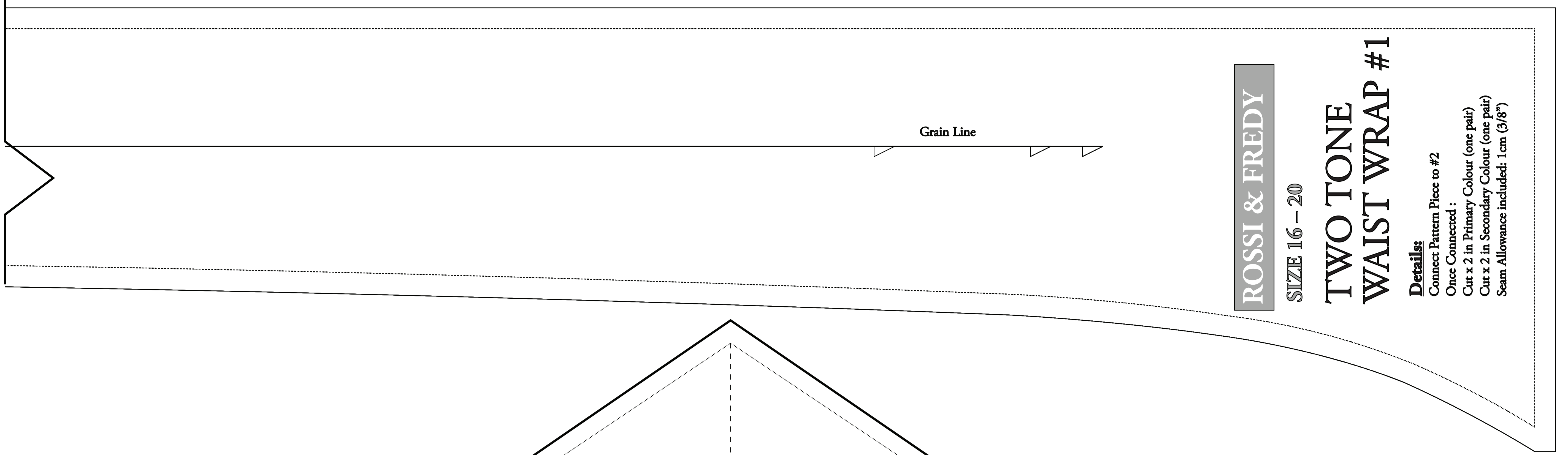


5cm x 5cm

Rossi Wrap & Fredy Wrap - Size 18

© The Bold One Workshop Patterns. These patterns are copyrighted by The Bold One Patterns and may not be copied, shared, or resold.

Reproducing / using this pattern to sell items commercially is prohibited.

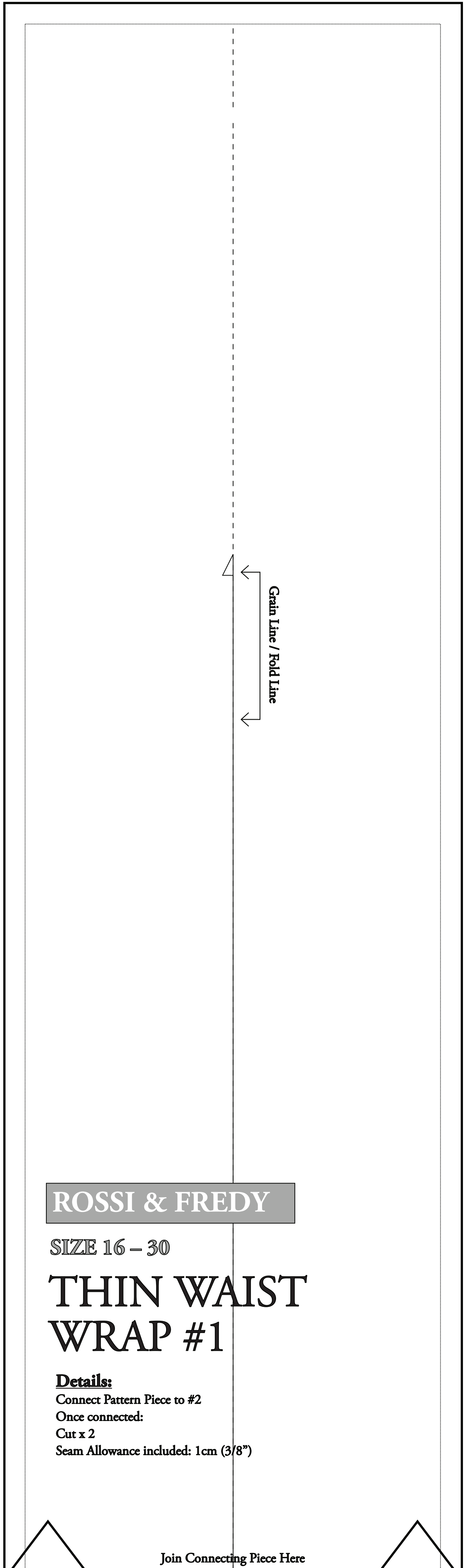


ROSSI & FREDY

SIZE 16 - 20

TWO TONE WAIST WRAP #1

Details: Connect Pattern Piece to #2 Once Connected: Cut x 2 in Primary Colour (one pair) Cut x 2 in Secondary Colour (one pair) Seam Allowance included: 1cm (3/8")



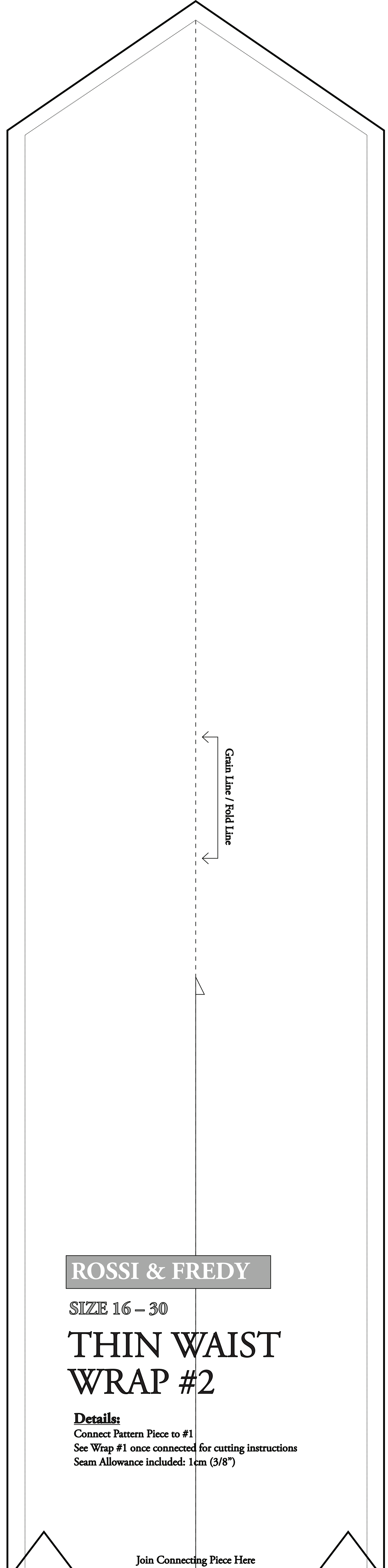
ROSSI & FREDY

SIZE 16 - 30

THIN WAIST WRAP #1

Details: Connect Pattern Piece to #2 Once connected: Cut x 2 Seam Allowance included: 1cm (3/8")

Join Connecting Piece Here



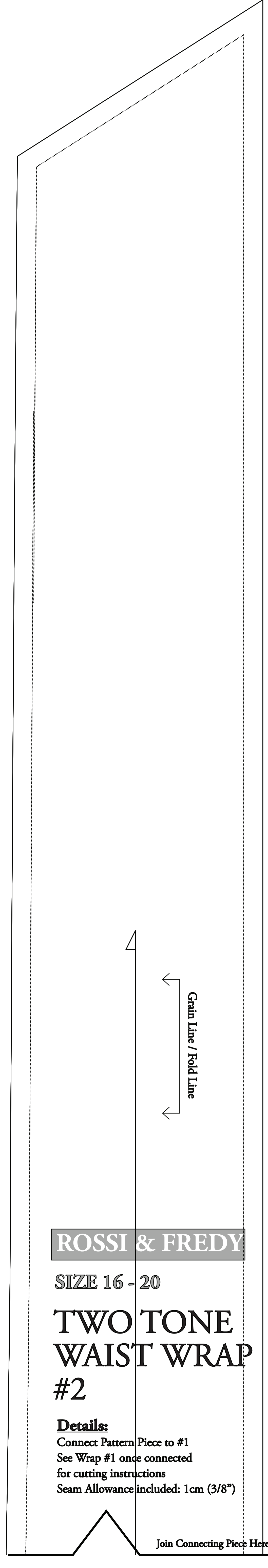
ROSSI & FREDY

SIZE 16 - 30

THIN WAIST WRAP #2

Details: Connect Pattern Piece to #1 See Wrap #1 once connected for cutting instructions Seam Allowance included: 1cm (3/8")

Join Connecting Piece Here



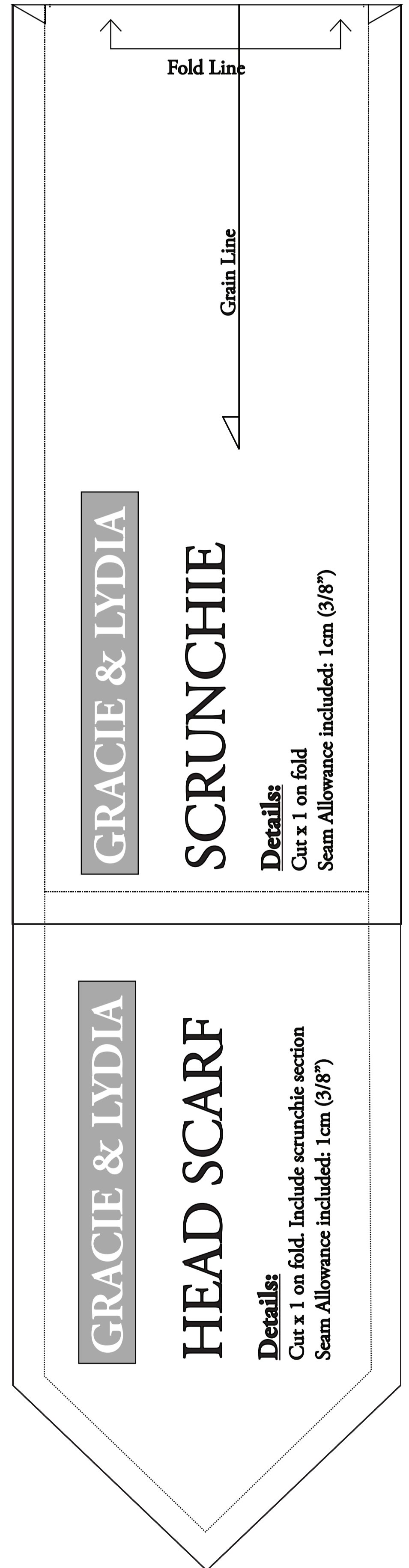
ROSSI & FREDY

SIZE 16 - 20

TWO TONE WAIST WRAP #2

Details: Connect Pattern Piece to #1 See Wrap #1 once connected for cutting instructions Seam Allowance included: 1cm (3/8")

Join Connecting Piece Here



GRACIE & LYDIA

SCRUNCHIE

Details: Cut x 1 on fold Seam Allowance included: 1cm (3/8")

GRACIE & LYDIA

HEAD SCARF

Details: Cut x 1 on fold. Include scrunchie section Seam Allowance included: 1cm (3/8")