

See instructions PDF
included in your files for a
pattern piece checklist +
navigating your patterns :)

ROSSI & FREDY

SIZE 12

SIDE BACK #1

Details:
Connect Pattern Piece to #2
at notches at top of pattern piece

Once connected:
Cut x 1 Pair (2 pieces all up)
Seam Allowance included: 1cm (3/8")

Grain Line

For Height 150 - 160cm

For Height 161 - 170cm

For Height 171cm+

For Height 171cm+ (Extra Long)

ROSSI & FREDY
SIZE 12
SIDE BACK #2

Details:
Connect Pattern Piece to Back #1
at notches below.
Once connected:
Refer to SIDE BACK #1 for cutting instructions
Seam Allowance included: 1cm (3/8")

ROSSI & FREDY
SIZE 12
CENTRE FRONT MAIN #2

Details:
Connect Pattern Piece to
CENTRE FRONT #1
at notches below.
Once connected:
Refer to CENTRE FRONT #1
for cutting instructions
Seam Allowance included: 1cm (3/8")

NECKLINE LINE KEY:
Boat Neck Front:
V Front:
Standard Square Front:
Fold Line / Grain line

ROSSI & FREDY
SIZE 12
FRONT FACING

NECKLINE LINE KEY:
Boat Neck Front:
V Front:
Standard Square Front:
Deep Square Front:

Details:
Cut x 1 Pair (2 pieces in total)
Seam Allowance included:
1cm (3/8")

Details:
Cut x 2
Seam Allowance: 1cm (3/8")

ROSSI & FREDY
BACK NECK TIE

ROSSI & FREDY
SIZE 12
SHOULDER HOLES

Details:
Cut x 2 on one side
Seam Allowance included: 1cm (3/8")

GRACIE & KYLIA
SCRUNCH TIE

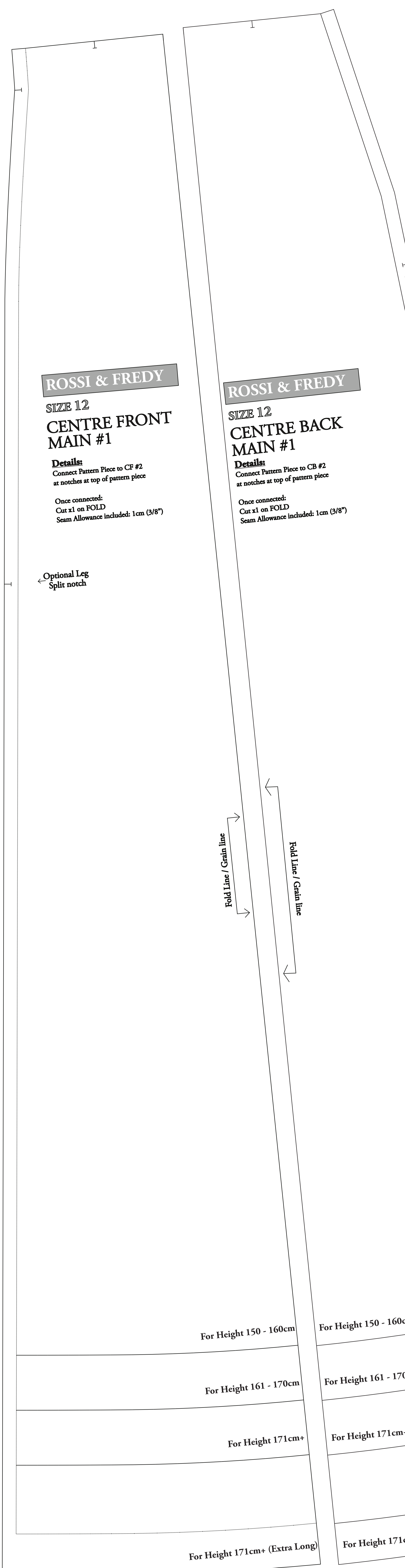
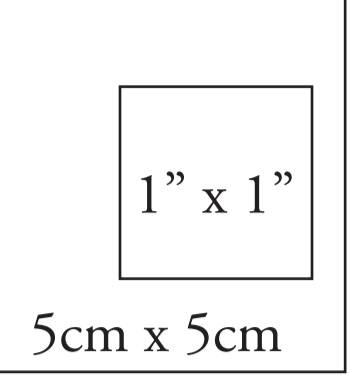
Details:
Cut x 1 on one side
Seam Allowance included: 1cm (3/8")

GRACIE & KYLIA
HEAD SCARE

Details:
Cut x 1 on one side
Seam Allowance included: 1cm (3/8")

ROSSI & FREDY
SIZE 12
CENTRE FRONT MAIN #2

Deep Square Neckline
Details:
Connect Pattern Piece to
CENTRE FRONT #1
at notches below.
Once connected:
Refer to CENTRE FRONT #1
for cutting instructions
Seam Allowance included:
1cm (3/8")



ROSSI & FREDY

**SIZE 12
CENTRE FRONT
MAIN #1**

Details:
Connect Pattern Piece to CF #2
at notches at top of pattern piece

Once connected:
Cut x1 on FOLD
Seam Allowance included: 1cm (3/8")

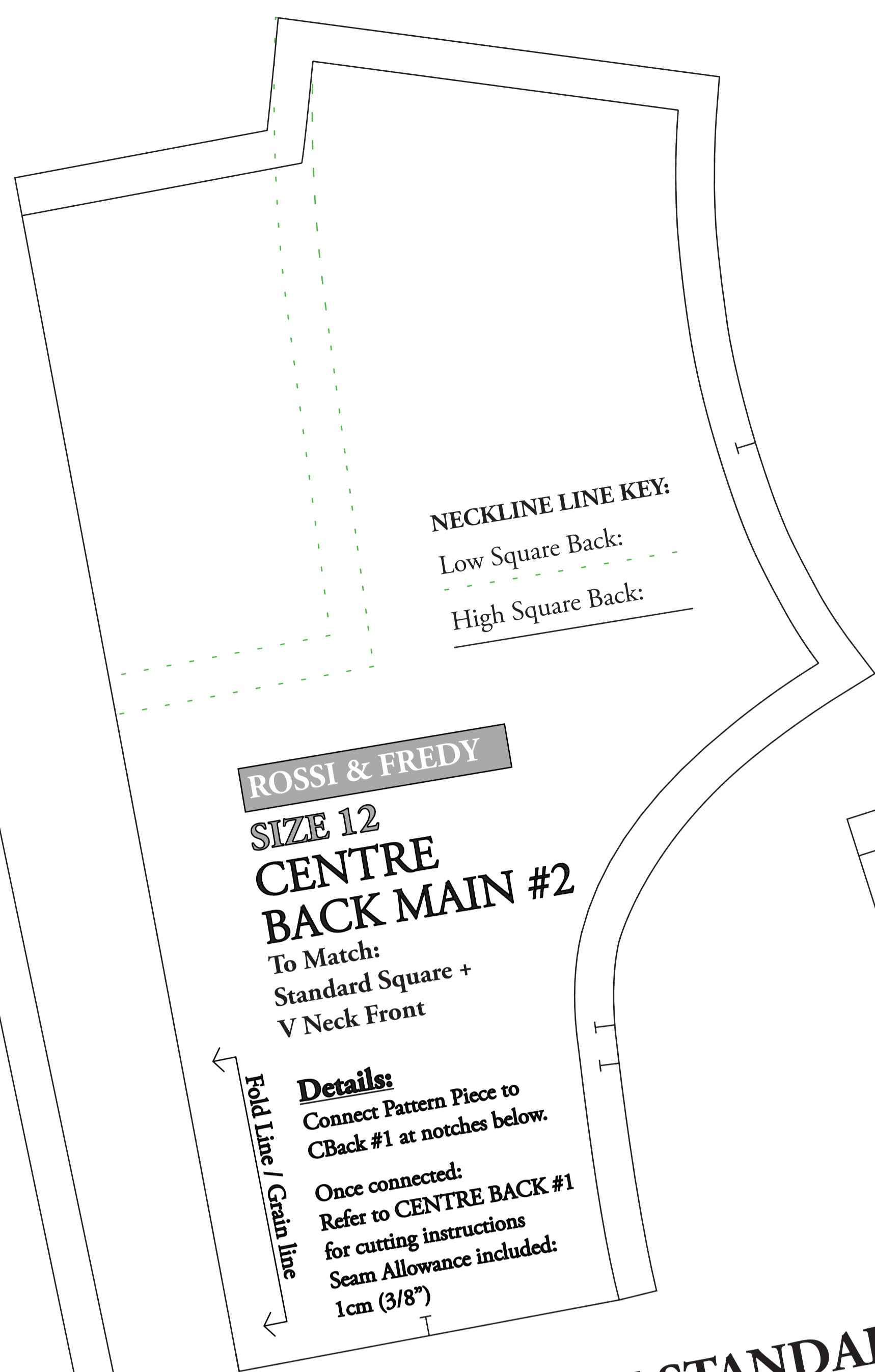
Optional Leg
Split notch

ROSSI & FREDY

**SIZE 12
CENTRE BACK
MAIN #1**

Details:
Connect Pattern Piece to CB #2
at notches at top of pattern piece

Once connected:
Cut x1 on FOLD
Seam Allowance included: 1cm (3/8")



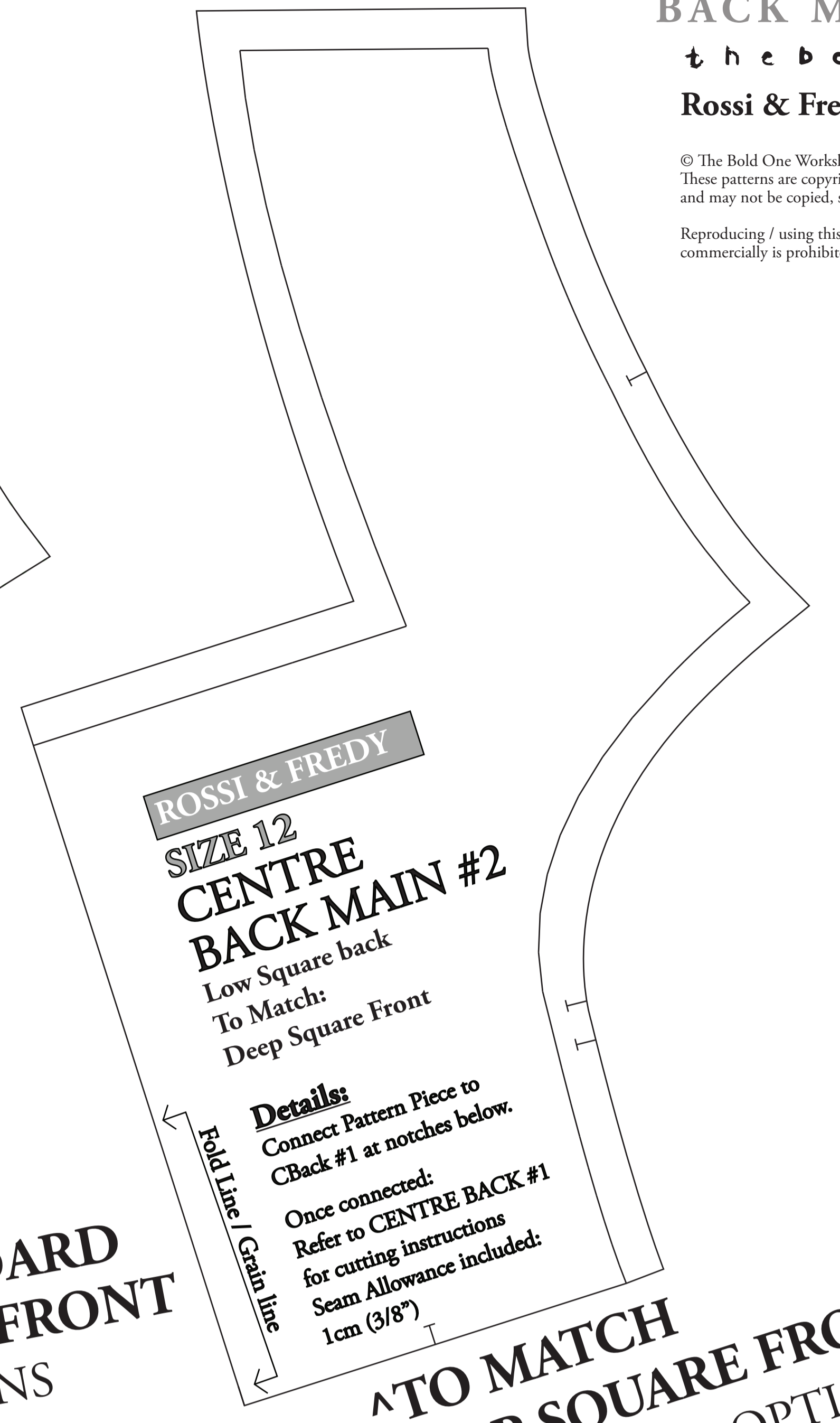
ROSSI & FREDY
**SIZE 12
CENTRE
BACK MAIN #2**

To Match:
Standard Square +
V Neck Front

Details:
Connect Pattern Piece to
CBack #1 at notches below.
Once connected:
Refer to CENTRE BACK #1
for cutting instructions
Seam Allowance included:
1cm (3/8")

NECKLINE LINE KEY:
Low Square Back:
High Square Back:

Fold Line / Grain line



ROSSI & FREDY
**SIZE 12
CENTRE
BACK MAIN #2**

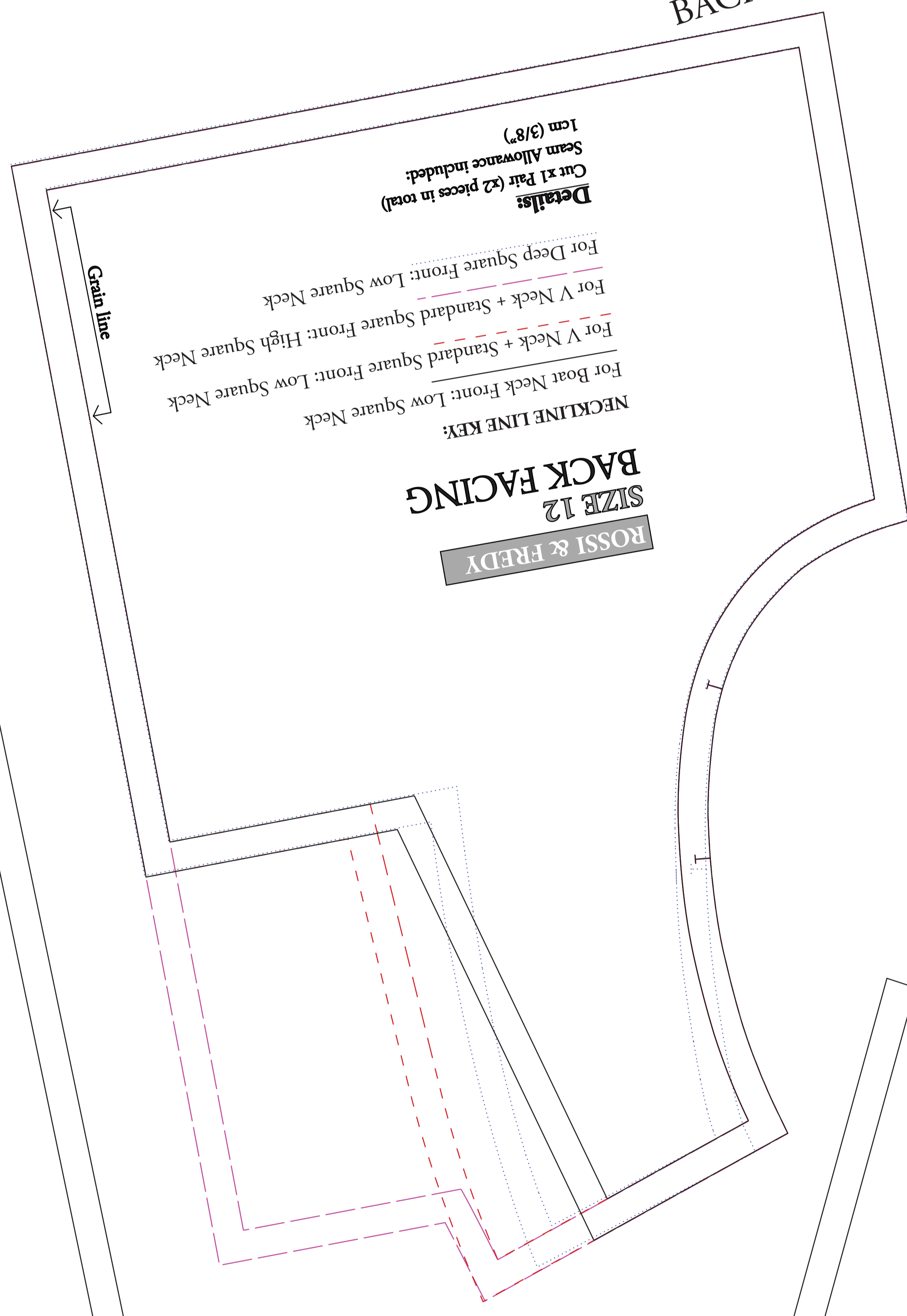
To Match:
Low Square back
Deep Square Front

Details:
Connect Pattern Piece to
CBack #1 at notches below.
Once connected:
Refer to CENTRE BACK #1
for cutting instructions
Seam Allowance included:
1cm (3/8")

Fold Line / Grain line

^ TO MATCH STANDARD
SQUARE & V NECK FRONT
BACK BODICE OPTIONS

^ TO MATCH
DEEP SQUARE FRONT
BACK BODICE OPTION



ROSSI & FREDY
**SIZE 12
BACK FACING**

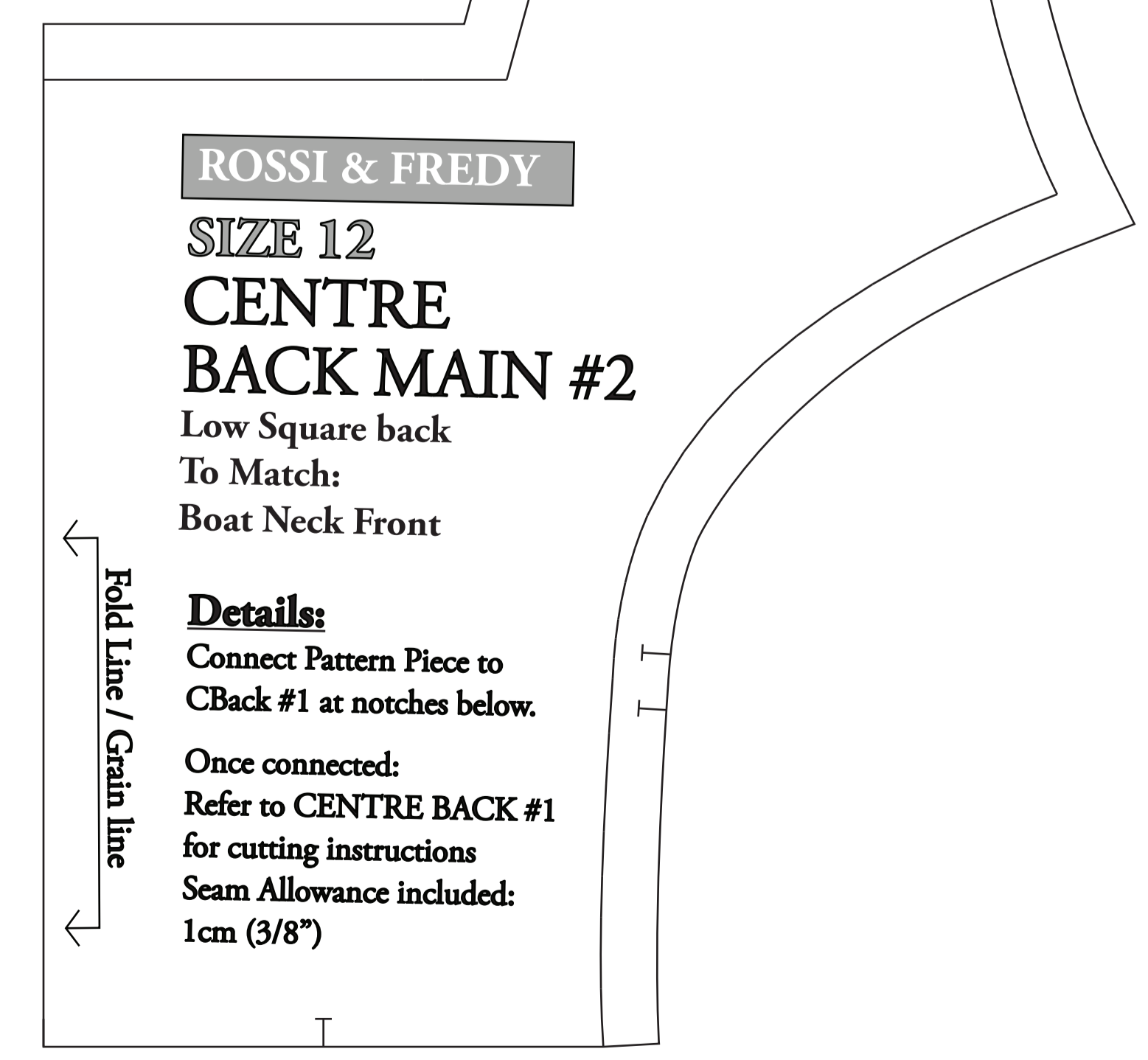
NECKLINE LINE KEY:
For Boat Neck Front: Low Square Neck
For V Neck + Standard Square Front: Low Square Neck
For V Neck + Standard Square Front: High Square Neck
For Deep Square Front: Low Square Neck

Details:
Cut x1 Pair (x2 pieces in total)
Seam Allowance included:
1cm (3/8")

Grain line

Fold Line / Grain line

Fold Line / Grain line



ROSSI & FREDY
**SIZE 12
CENTRE
BACK MAIN #2**

To Match:
Boat Neck Front

Details:
Connect Pattern Piece to
CBack #1 at notches below.
Once connected:
Refer to CENTRE BACK #1
for cutting instructions
Seam Allowance included:
1cm (3/8")

Fold Line / Grain line

^ TO MATCH BOAT
NECK FRONT
BACK BODICE OPTION

For Height 150 - 160cm

For Height 150 - 160cm

For Height 161 - 170cm

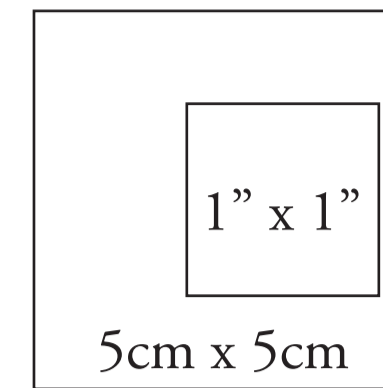
For Height 161 - 170cm

For Height 171cm+

For Height 171cm+

For Height 171cm+ (Extra Long)

For Height 171cm+ (Extra Long)



ROSSI & FREDY

SIZE 12

SIDE FRONT #1

Details:

Connect Pattern Piece to #2 at notches at top of pattern piece.

Once connected:

Cut x 1 Pair (2 pieces all up)

Seam Allowance included: 1cm (3/8")

Optional Leg Split notch

Grain Line

For Height 150 - 160cm

For Height 161 - 170cm

For Height 171cm+

For Height 171cm+ (Extra Long)

Grain Line / Fold Line

ROSSI & FREDY

SIZE 12

SHORT PUFF SLEEVE

Details:

Cut x 2 on fold

Seam Allowance included: 1cm (3/8")

LINE KEY

SHORT PUFF SLEEVE

ROSSI & FREDY

POCKET BAG

Details:

Cut x 4

Seam Allowance included: 1cm (3/8")

ROSSI & FREDY

SIZE 12

LONG SHIRRED SLEEVE

Details:

Cut x 2 on fold

Seam Allowance included: 1cm (3/8")

LINE KEY

LONG SHIRRED

ROSSI & FREDY

DEEP SQUARE NECK SHOULDER TIE

Cut x 4

Seam Allowance included: 1cm (3/8")

Once connected: Refer to Side Front #1 for cutting instructions at notches below.
Connect Pattern Piece to front #1

ROSSI & FREDY
SIZE 12
SIDE FRONT #2

FREDY / ROSSI WRAP

SIZE 6 - 14

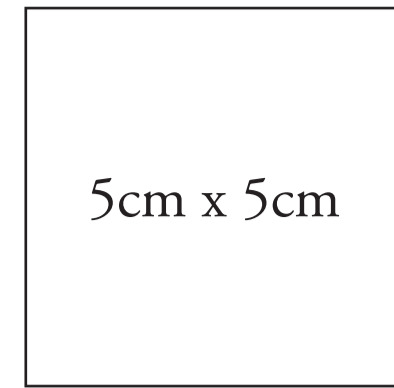
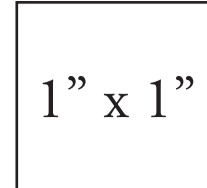
STANDARD WAIST WRAP WING

Cut x 2 Pairs (x2 up this way, x2 with this side flipped over)

Seam Allowance included: 1cm (3/8")

GRAINLINE

Use the following boxes to check pattern has been printed to correct scale.



Rossi Wrap & Fredy Wrap - Size 12

© The Bold One Workshop Patterns. These patterns are copyrighted by The Bold One Patterns and may not be copied, shared, or resold.

Reproducing / using this pattern to sell items commercially is prohibited.

