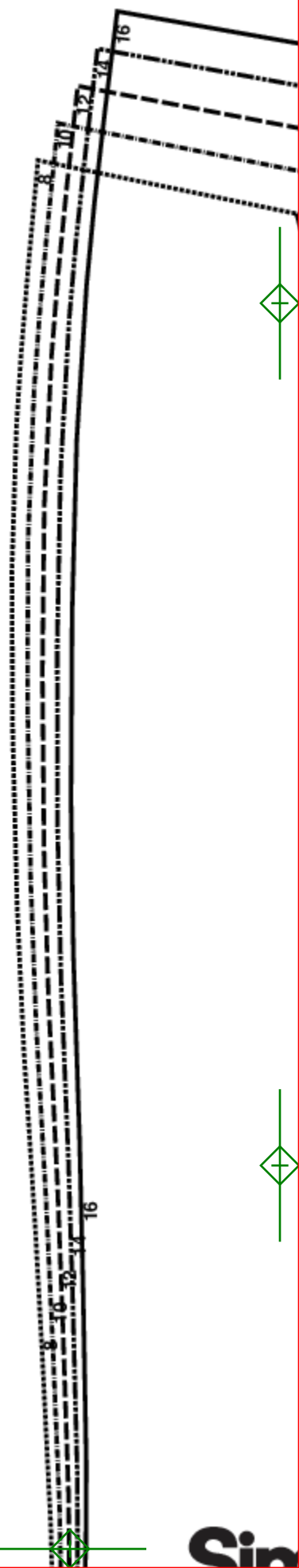


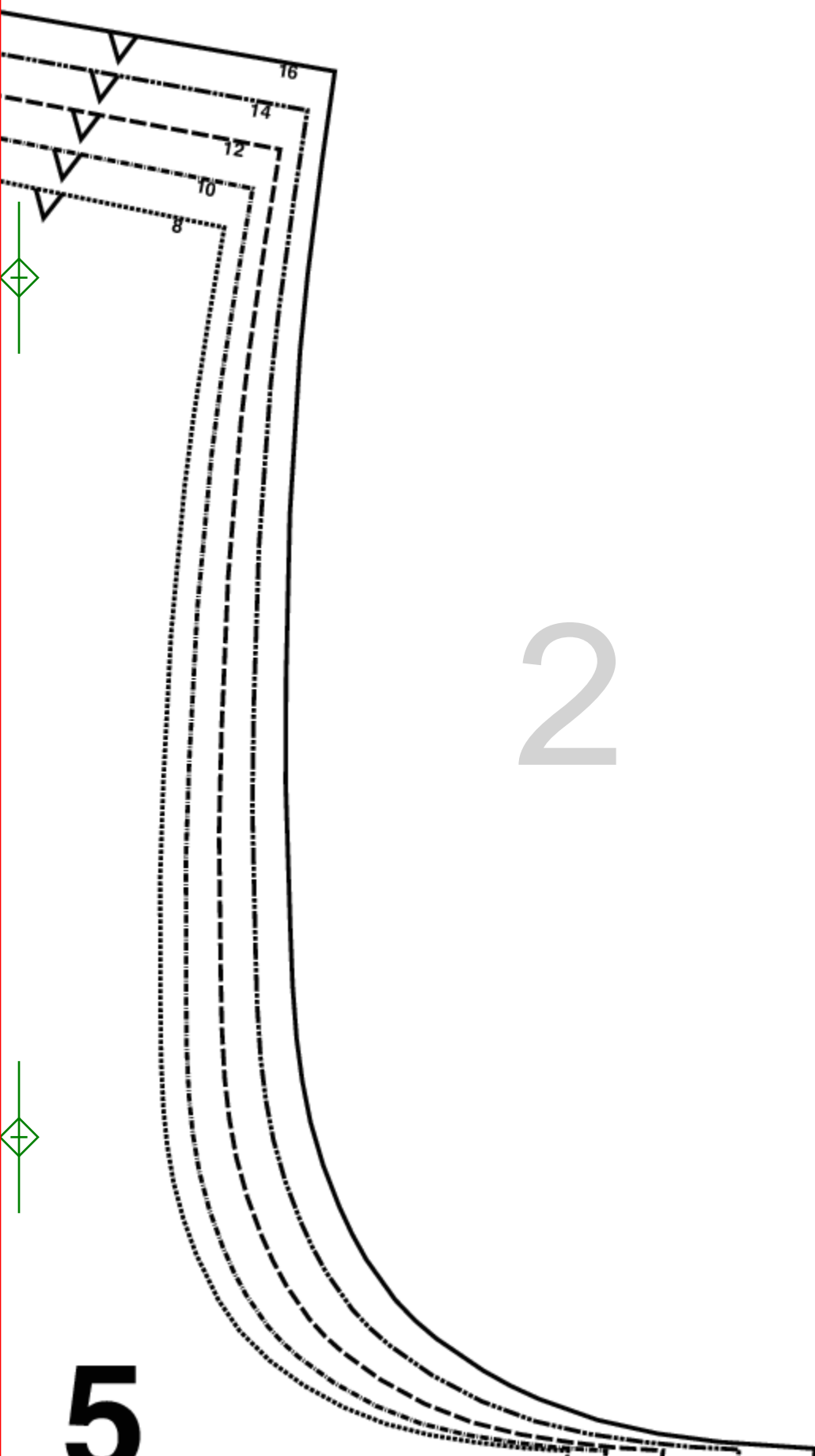
31 Simplicity®

S9779-MISS
SIZES/TAILLES/TALLAS
K5(8-10-12-14-16)

STRAP-A,B
TIRA
BANDE

FABRIC: CUT 2
LINING: CUT 2
INTERLINING: CUT 2





2

APPLIQUE
BUST
BUTTONHOL
CASING
CENTER
CENTER BAC
CENTER FRO
CUT ...
CUT ... ON FO
CUTTING LIN
DART
EASE
ELASTIC GUI
FABRIC
FOLDLINE
FOR MISSES
GATHER
HEM ALLOW
HIP
INTERFACING
LINING
PLEAT
SEAM
SELVAGE
STITCHING L
STRETCH
WAIST
WAISTLINE

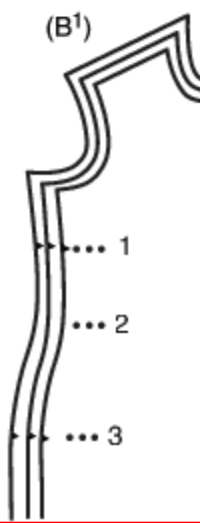
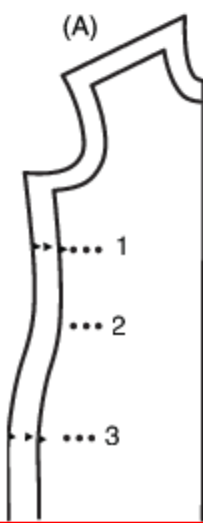
5

ENGLISH GLOSSARY	GLOSSARIO ITALIANO	WOORDENLIJST NEDERLANDS	GLOSSAR DEUTSCH
UE	APPLICAZIONE	APPLIQUÉ	APPLIKATION
WHOLE GUIDE	PETTO	BUSTE	OBERWEITE
	GUIDA PER ASOLE	SJABLOONVOOR KNOOPSGAT	VORLAGE FÜR KNOPFLÖCHER
	GUAINA	TUNNEL/GOOT JE	FÜR DURCHZUG
	CENTRO	MIDDEN	MITTE
R BACK	CENTRO DIETRO	MIDDEN ACHTER	RÜCKW. MITTE
R FRONT	CENTRO DAVANTI	MIDDEN DEL FRENTE	VORDERE MITTE
	TAGLIARE X KNIPPEN	... X ZUSCHNEIDEN
ON FOLD	TAGLIARE ... SULLA PIEGA	... AAN STOFVOUW LEGGEN	... X AM STOFFBRUCH ZUSCHNEIDEN
G LINE	LINEA DI TAGLIO	KNIPLIJN	SCHNITTLINIE
	PINCE	FIGUUR NAAD	ABNAHER
C GUIDE	DIMINUIRE	TOEGEVEN	EINHALTEN
	GUIDA PER ELASTICO	SJABLOONVOOR ELASTIC	VORLAGE FÜR GUMMIZUG
	TESSUTO	STOF	STOFF
NE	LINEA DI PIEGA	VOUWLIJN	UMBRUCHLINIE
SSES' PETITE	PER SIGNORA DI STATURA BASSA	VOOR KLEINERE DAMES	FÜR KLEINE DAMEN
	ARRICCIARE	RIMPELEN	EINKRÄUSELN
LOWED	ORLO COMPRESO	ZOOMTOESLAG	MIT SAUMZUGABE
	FIANCHI	HEUP	HÜFTE
ACING	INTERFODERA	TUSSENVOERING	EINLAGE
	FODERA	VOERING	FUTTER
	PIEGA	PLOOI	FALTE
	CUCITURA	NAAD	NAHT
	CIMOSA	ZELFRAND	WEBKANTE
ING LINE	LINEA DI CUCITURA	NAAILIJN	STEPPLINIE
CH	TIRARE	REK	DEHNEN
	VITA	TAILL	TAILLE
INE	LINEA DELLA VITA	TAILL .LIJN	TAILLENLINIE

Simplicity's MULTI-SIZE Patterns

The easy way to fit your pattern

gives you the flexibility to choose your size separately for BUST(1) WAIST(2) HIP(3)





16 16 14 12 10 8

16 14 12 10 8

4



5

8

Simplicity

S9779-MISS

SIZES/TAILLES/TALLAS
K5(8-10-12-14-16)

RUFFLE-B

VOLANTE
VOLANT

CUT 3 ON FOL

y[®]

DLD

6





7



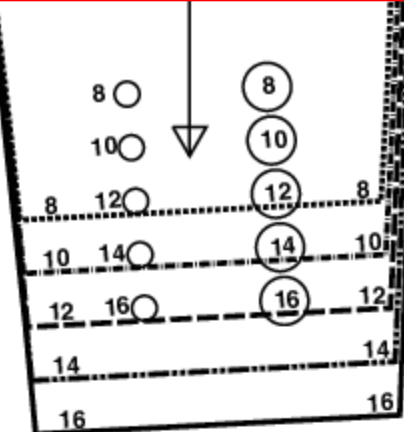
row: 2, col: 1

Simplicity

S9779
SIZE
K5(8)

BODICE
COSTADO DE
CORSAGE C

FABRIC
LINING
INTERL



Simplicity

S9779-MISS

ALL SIZES
TOUTES LES TAILLES
TODAS LAS TALLAS

BODICE BACK-A,B

ESPALDA DEL CORPINO
CORSAGE D OS

FABRIC: CUT 2

LINING: CUT 2

INTERLINING: CUT 2

CENTER BACK



WAISTLINE



48

GATHER

WAISTLINE



If you have a **ONE SIZE** figure, just select the cutting line that corresponds to your size. **MARK** with a colored felt tip pen and **CUT** along marked line. (A)

If your figure is a **COMBINATION** of **TWO OR MORE SIZES**, **SELECT** the cutting lines that correspond to your size at bust, waist and hip and **MARK** with a colored felt tip pen. Blend the newly marked lines from one size to the other creating your own **CUSTOMIZED PATTERN**. Cut along marked like (B1)(B2)

Be sure to adjust pattern pieces that will be stitched to pieces you've adjusted. For example, if you made a change on the front, you will need to make the same adjustment to the back. (A) (B1) (B2)

La méthode facile d'ajuster votre patron

vous offre la flexibilité de choisir votre taille séparément pour **POITRINE(1)**
TAILLE(2) **HANCHES(3)**

Si vous avez une silhouette **UNE TAILLE**, il vous suffira de **CHOISIR** le ligne de coupe qui correspond à votre **TAILLE**. **MARQUEZ-LA** avec un stylo pointe feutre en couler et **COUPEZ** le long la ligne tracée. (A)

Si votre silhouette est une **COMBINAISON DE DUEX TAILLES OU PLUS**, **CHOISISSEZ** les lignes de coupe qui correspondent à votre taille pour poitrine, taille et hanches et **MARQUEZ-LES** avec un stylo pointe feutre en couleur. Raccordez les lignes nouvellement marquées d'une taille l'autre, créant ainsi votre **PROPRE PATRON SUR MESURES**. **COPUEZ** le long de la ligne tracée. (B1)(B2)

Veillez à ajuster les pièces de patron qui seront piquées aux pièces que vous venez de rectifier. Par exemple, si vous avez fait un changement sur le devant, il sera nécessaire de faire le meme ajustements sur le dos. (A) (B1) (B2)

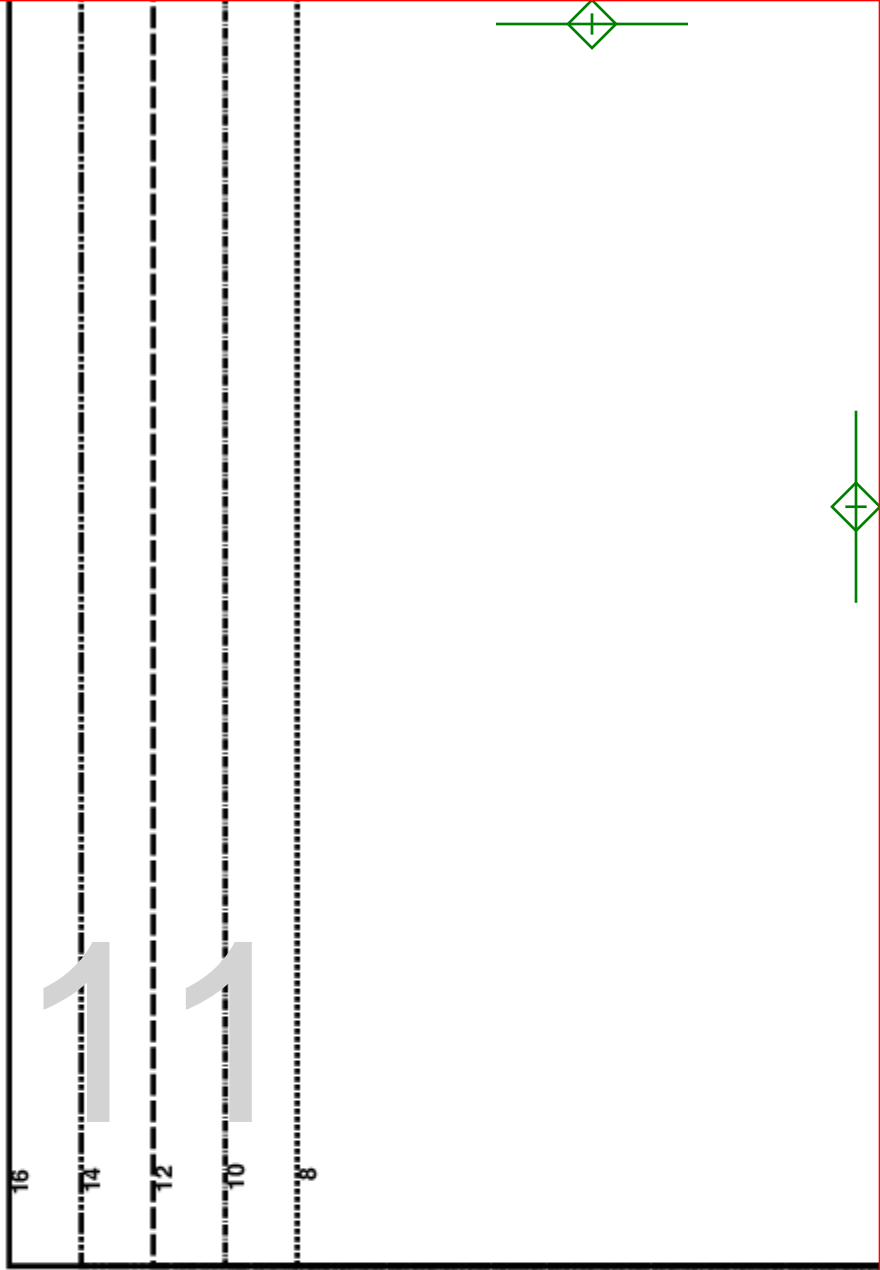
Una manera fácil de ajustar su patron

le dan flexibilidad para escoger separadamente su talla de **BUSTO(1)** **CINTURA(2)**
CADERA(2)

Si usted tiene un figura que corresponde solamente a **UNA TALLA**, simplemente seleccione la línea de corte para su talla. Marque con una esferográfica de color y punta suave. Corte por la línea marcada. (A)

Si su figura es una **COMBINACION** de **DOS O MAS TALLAS**, **SELECCIONE** las líneas de corte que corresponden a su la talla de busto, cintura y cadera u **MARQUE** con una esferográfica de color y de punta suave, las nuevas líneas narcadas, de una talla a la otra, creando así un **PATRON A SU MEDIDA**. Corte por la nueva línea marcada. (B1) (B2)

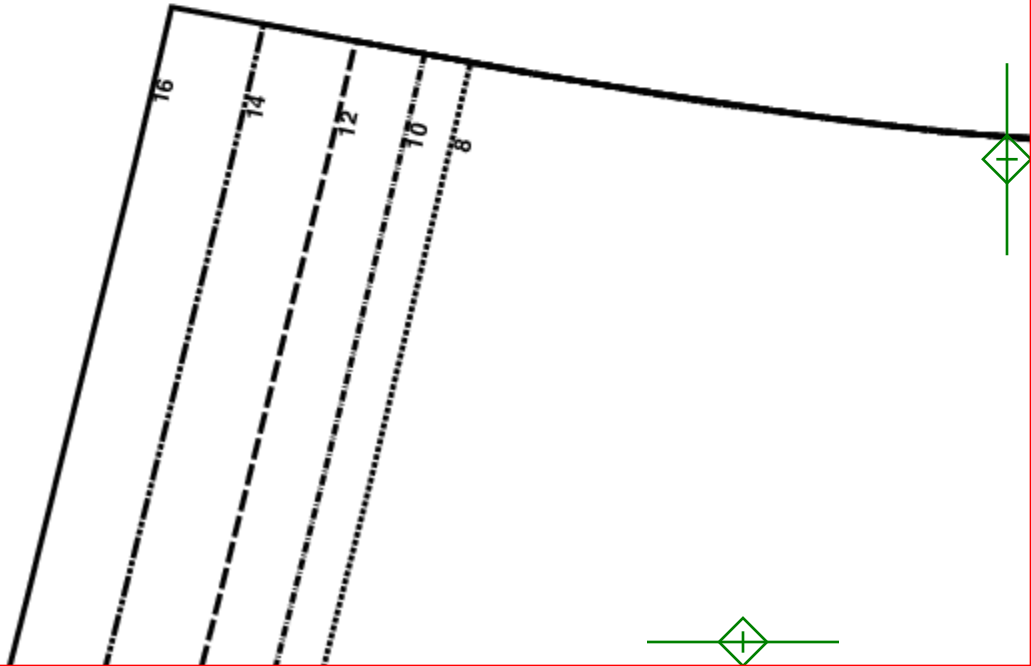
No olvide corregir las piezas del páttron que serán cosidas a las piezas que ha corregido. Por ejemplo, si usted hace en cambio en el frente, será necesario hacer los mismos cambios en la espalda. (A) (B1) (B2)



 www.simplicity.com
 info@simplicity.com
 1-888-588-2700

12

HEM 5/8" (1.5CM)



13

16
14
12
10
8

GATHER

WAISTLINE



14



CENTER BACK

BACK SEAM

15

7 Simplici

S9779-MISS
SIZES/TAILLES/TALLAS
K5(8-10-12-14-16)

SKIRT BACK
ESPALDA DE LA FALDA
JUPE DOS

CUT 2

city®

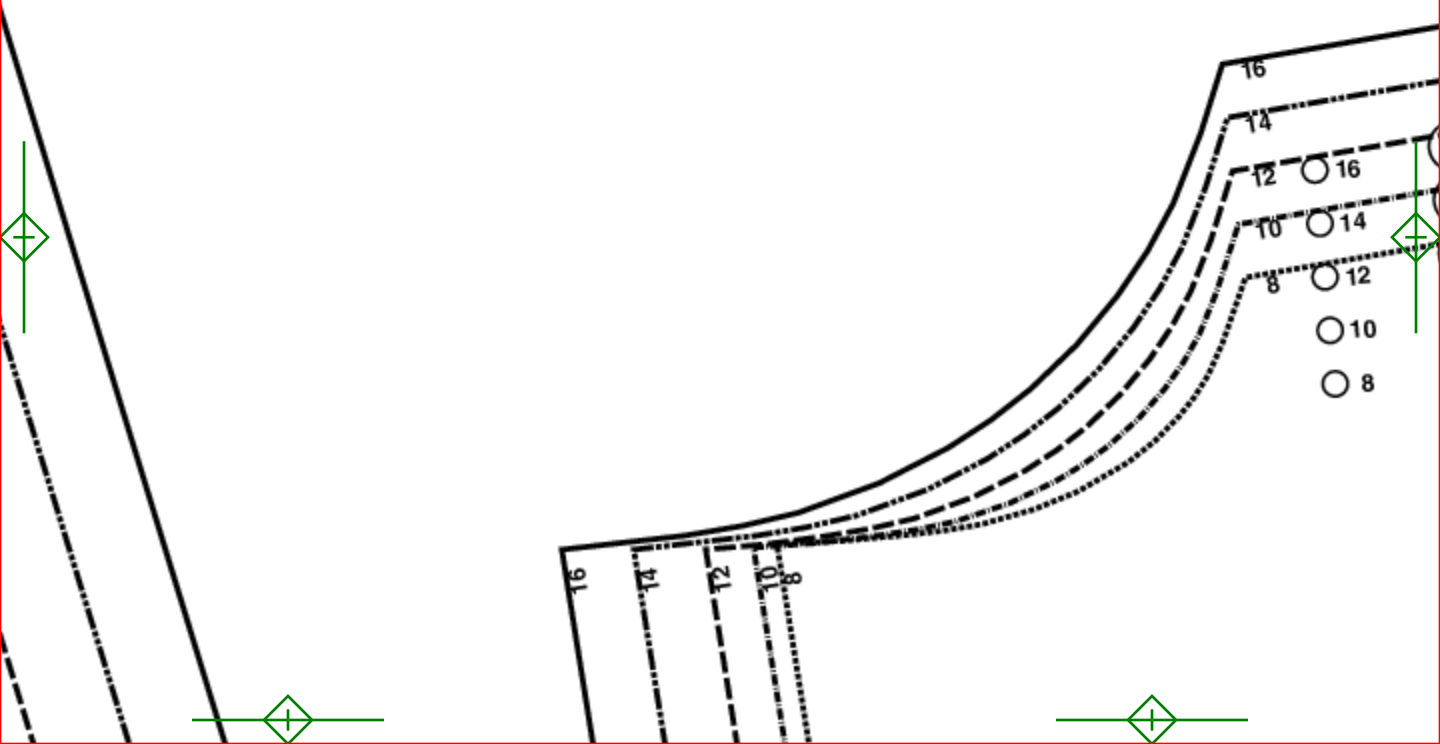
SS
LLAS

ACK-A,B
ALDA

16



17



S9779

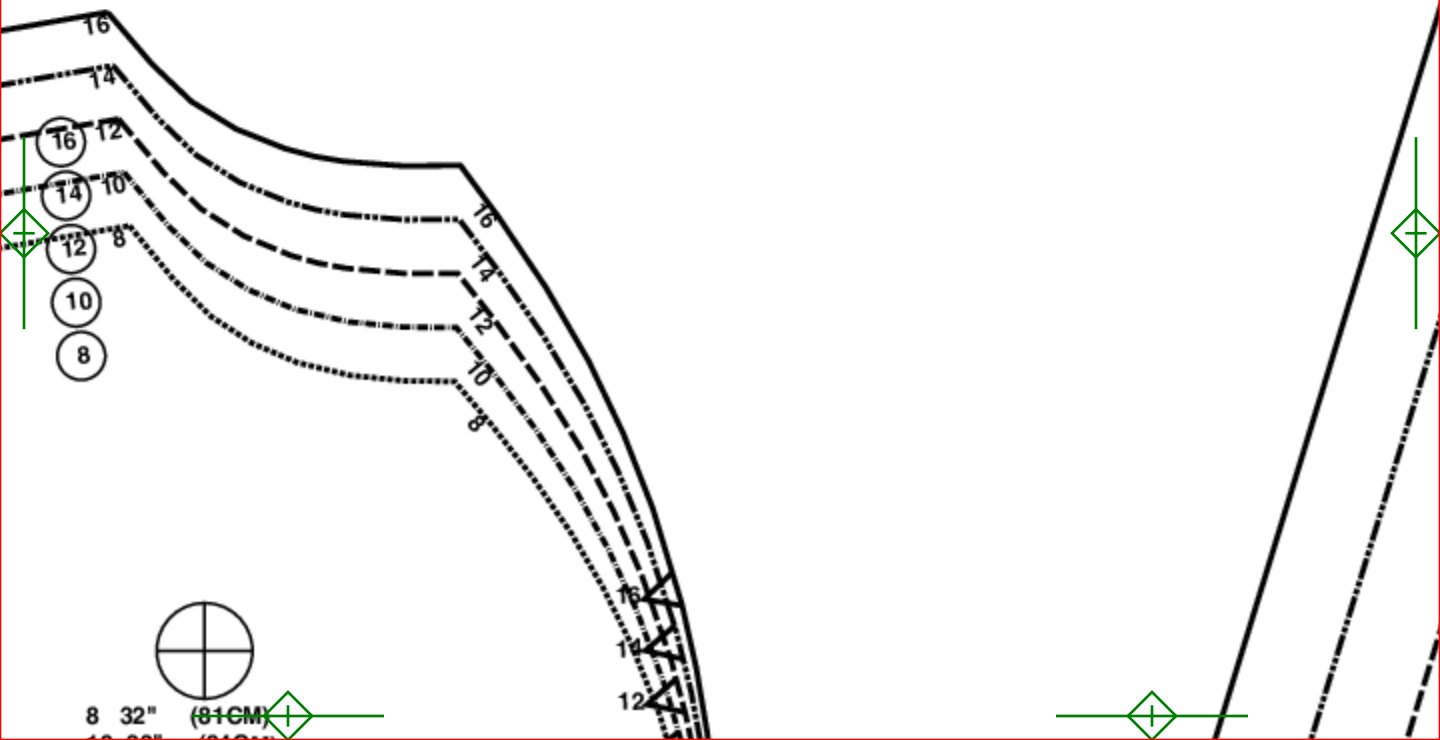
K5(8-16)

0 0 0 4

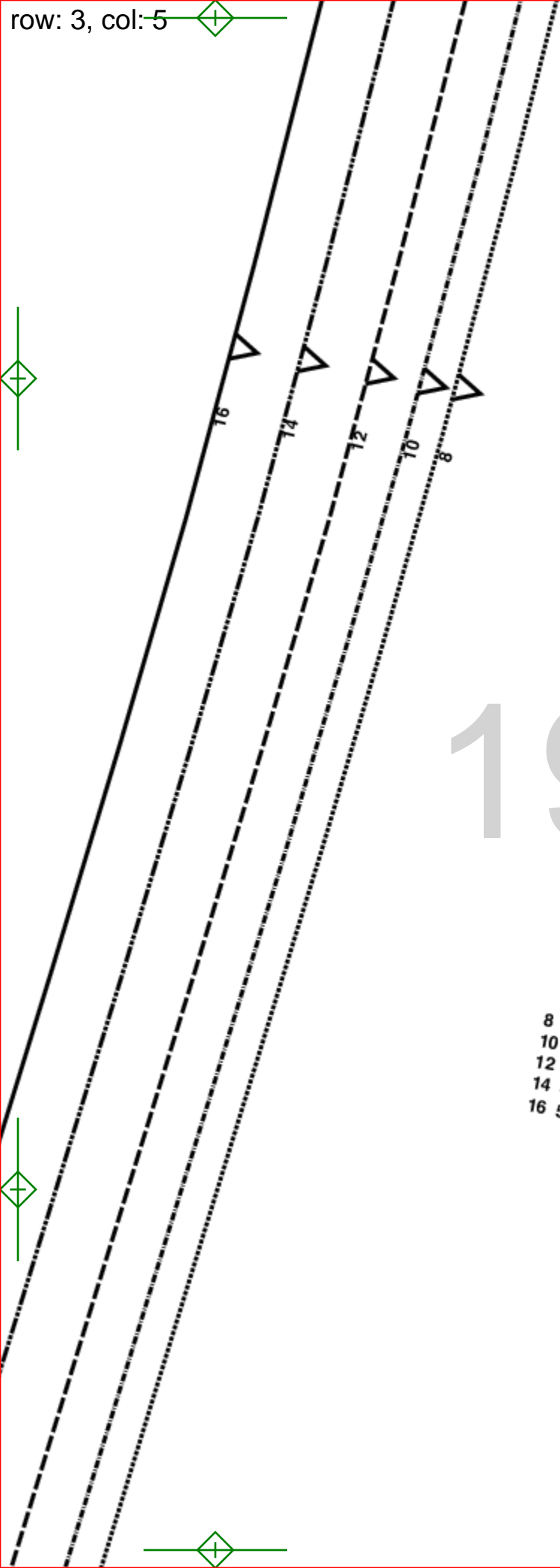
WE USE RECYCLED PAPER
FOR OUR PATTERN
PRODUCTS

NOUS UTILISON DU PAPIER
RECYCLE POUR NOS
PATRONS

18



8 32" (81CM)



19



- 8 47" (119CM)
- 10 48" (122CM)
- 12 49 1/2" (126CM)
- 14 51 1/2" (131CM)
- 16 53 1/2" (136CM)

6

Simplicity[®]

S9779-MISS
SIZES/TAILLES/TALLAS
K5(8-10-12-14-16)

SKIRT FRONT-A,B
FRENTE DE LA FALDA
JUPE DEVANT

CUT 1 ON FOLD

20

CENTER FRONT ON FOLD



21



CUT HERE FOR VIEW A

22

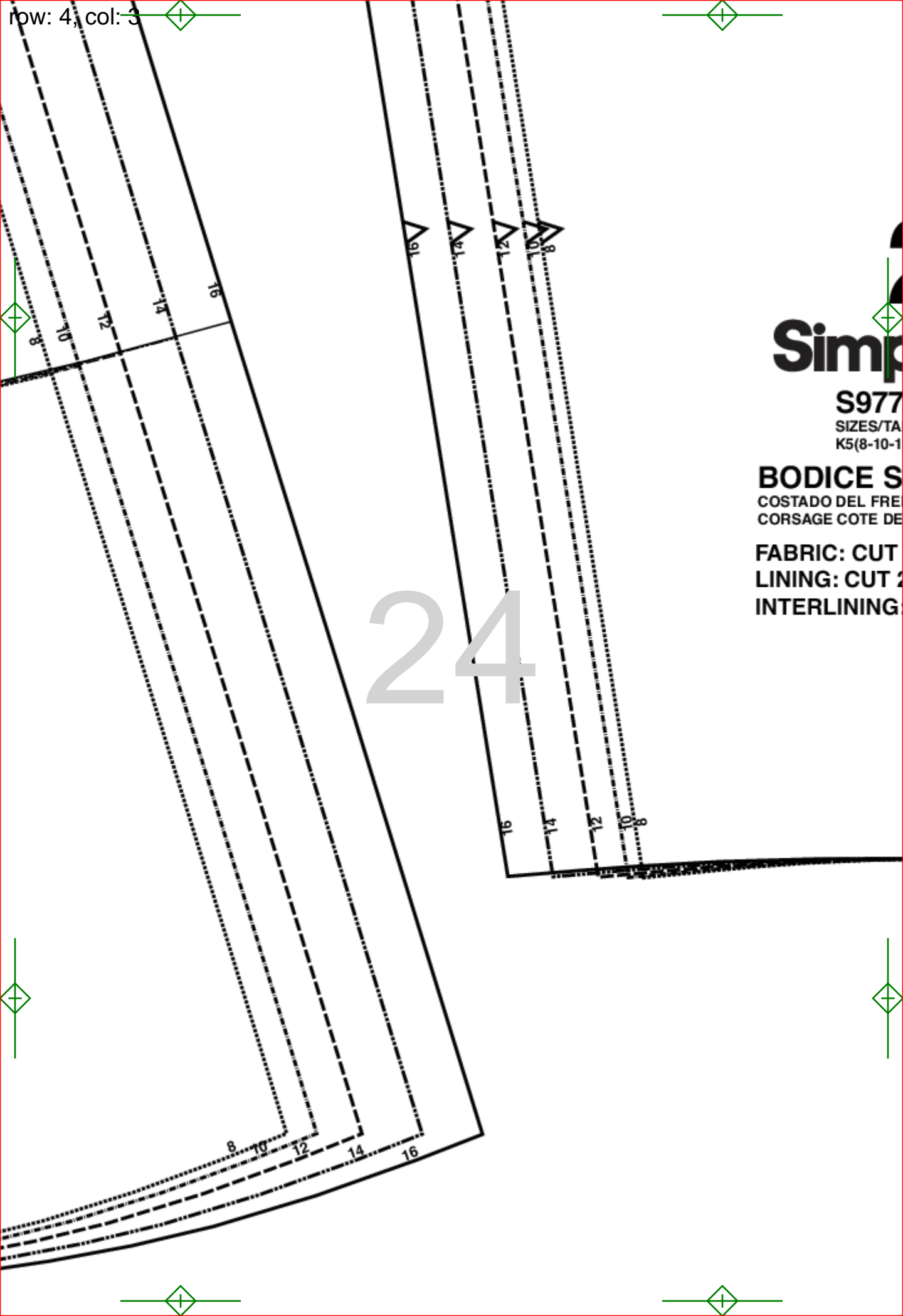




HEM 5/8" (1.5CM)

23





Simp

S977
SIZES/TA
K5(8-10-1

BODICE S
COSTADO DEL FRE
CORSAGE COTE DE

FABRIC: CUT
LINING: CUT 2
INTERLINING

24

row: 4, col: 4
84 32" (84CM)
10 33" (84CM)
12 34 1/2" (88CM)
14 36 1/2" (93CM)
16 38 1/2" (98CM)

2
mplicity®

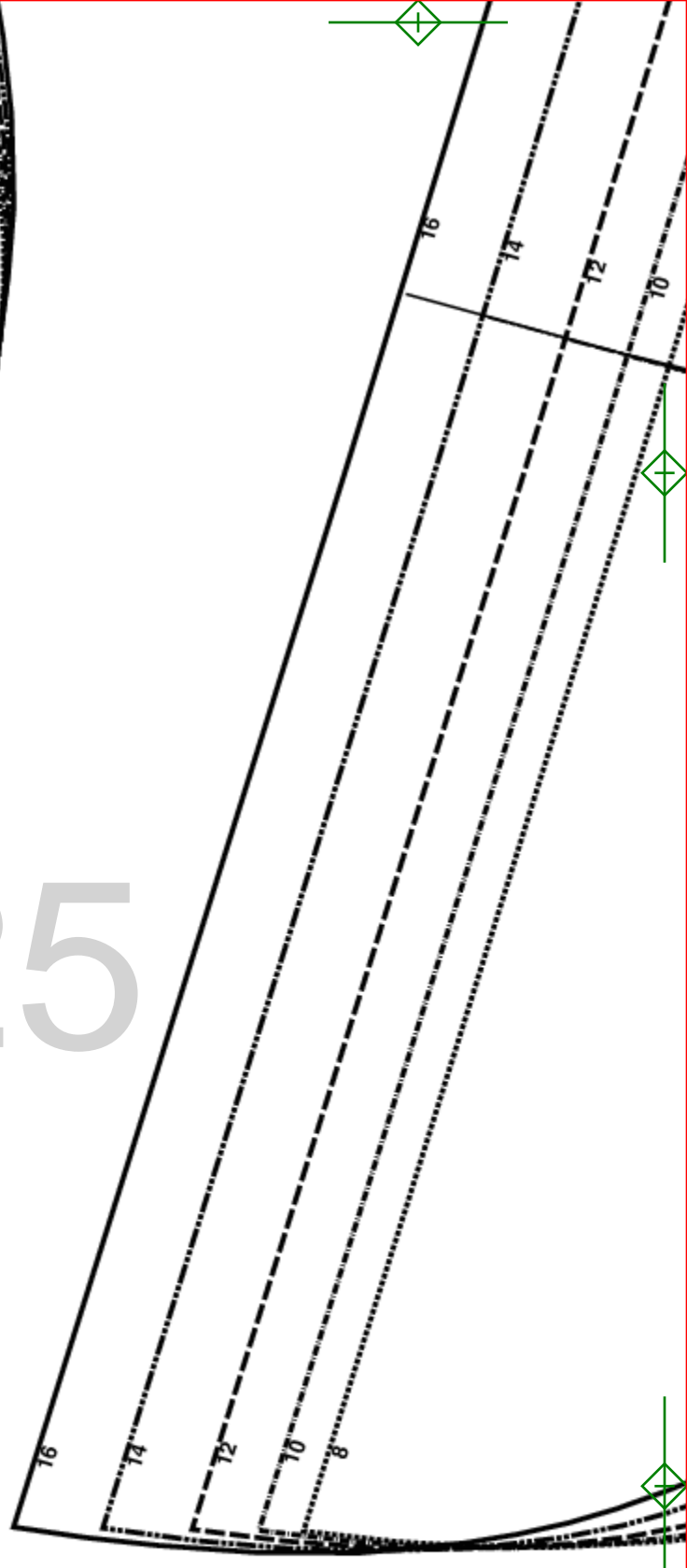
779-MISS
S/TAILLES/TALLAS
(10-12-14-16)

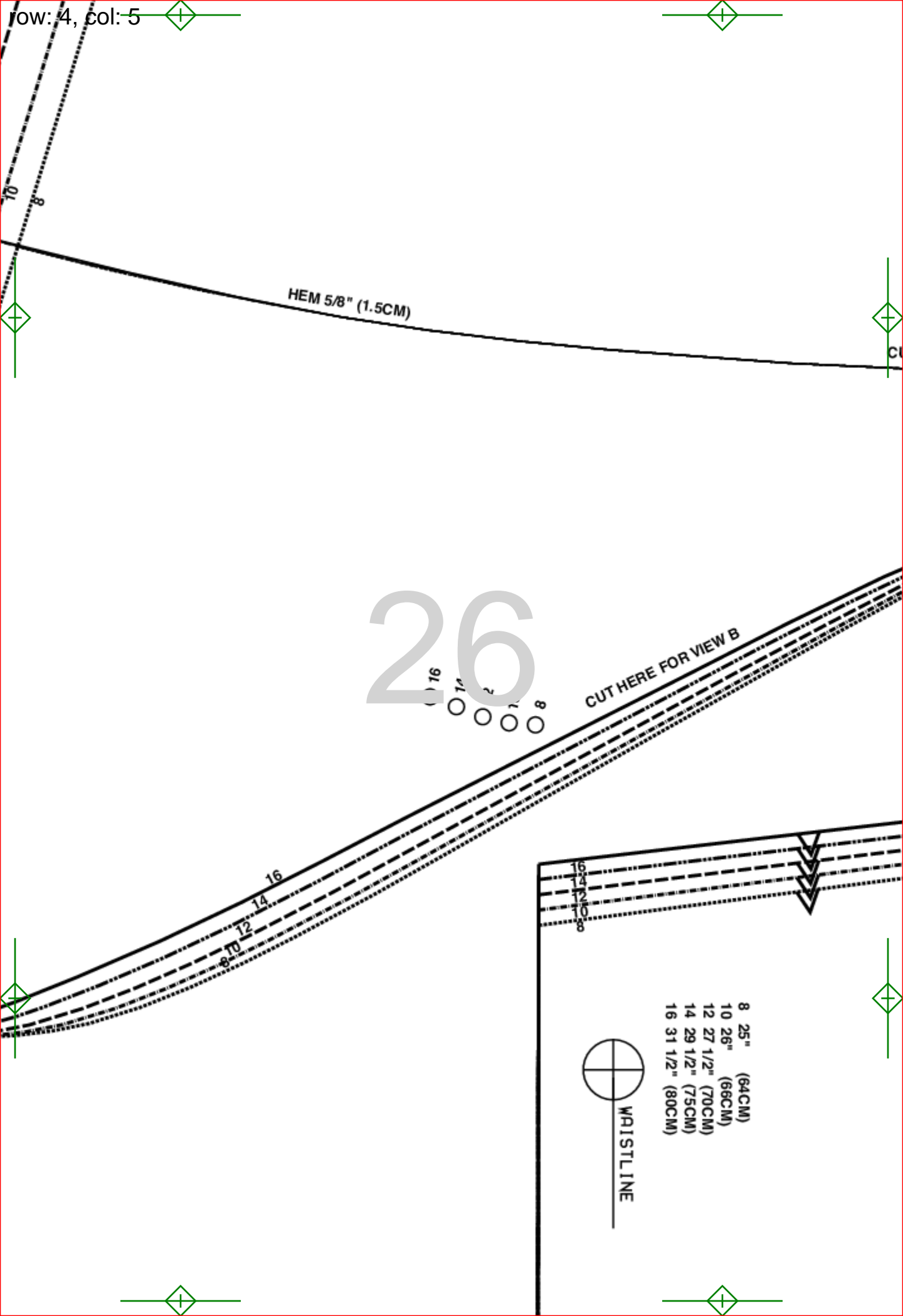
SIDE FRONT-A,B
FRENTE DEL CORPINO
DE DEVANT

CUT 2
CUT 2
CUT 2



25





HEM 5/8" (1.5CM)

26

CUT HERE FOR VIEW B

8
10
12
14
16

8
10
12
14
16

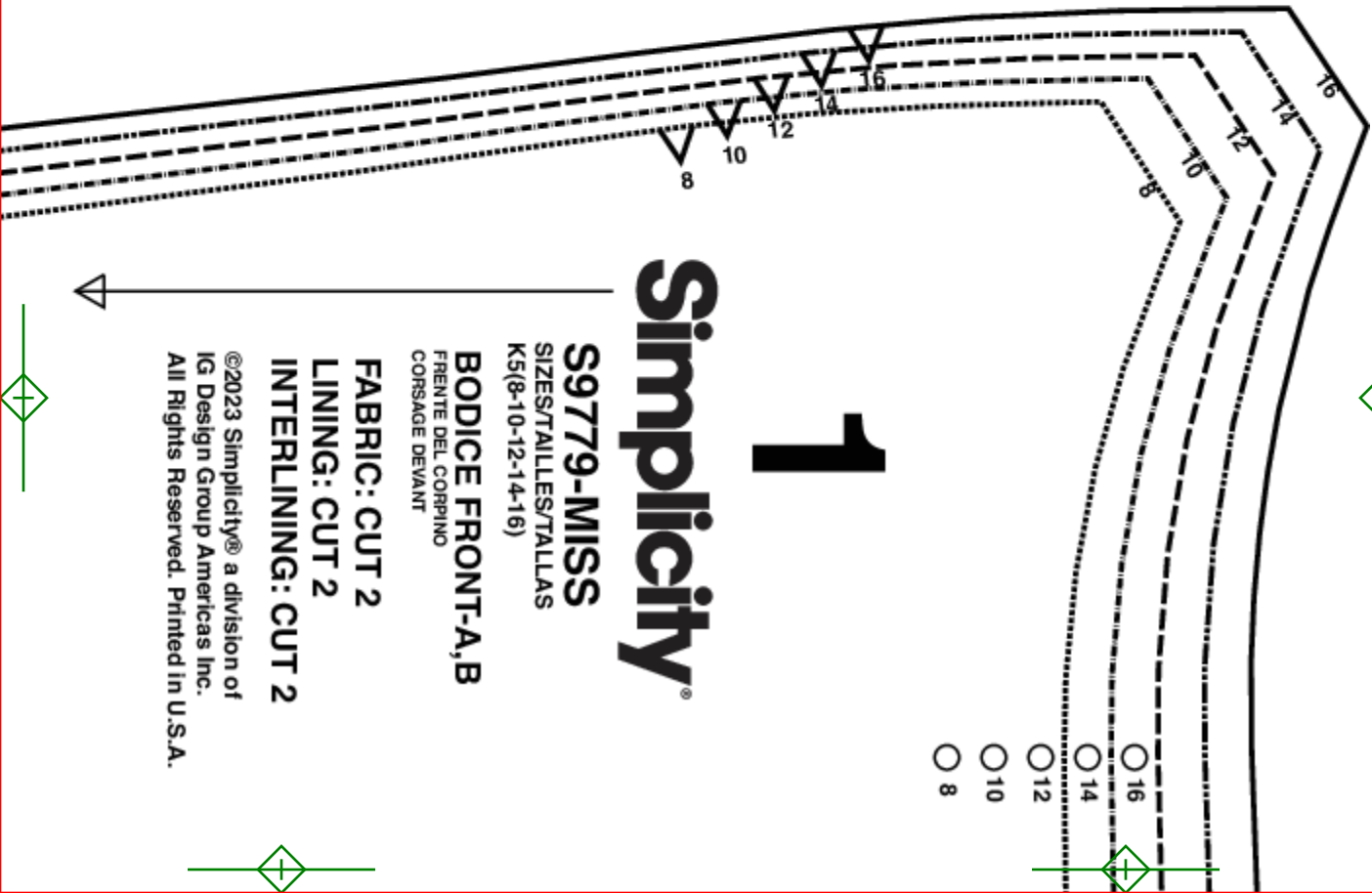
- 8 25" (64CM)
- 10 26" (66CM)
- 12 27 1/2" (70CM)
- 14 29 1/2" (75CM)
- 16 31 1/2" (80CM)



WAISTLINE

CUT HERE FOR VIEW A

27



1

Simplicity

S9779-MISS

SIZES/TALLES/TALLAS
K5(8-10-12-14-16)

BODICE FRONT-A,B

FRENTE DEL CORPINO
CORSAGE DEVANT

FABRIC: CUT 2

LINING: CUT 2

INTERLINING: CUT 2

©2023 Simplicity® a division of
IG Design Group Americas Inc.
All Rights Reserved. Printed In U.S.A.

- 16
- 14
- 12
- 10
- 8



28





29



30



31





32



33

34



35

