

McCalls 6027 Size:6-12 Part:1 Paper:a4

Generated by printsew.com

Patent No: 7,716,143

Any reproduction and/or redistribution is strictly prohibited.

PRINT THIS PAGE FIRST! To make sure your printer setup correctly.
The below square should measure 1 inch x 1 inch (2.54 cm x 2.54 cm) after printing.
Allow square to have 1/16 inch (2 mm) deviation for printer calibration differences.

select



Make sure your printer is set to the same paper size that you

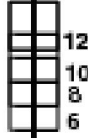
To save ink, set your printer to Draft or Fast Draft.

Ch R p



Row A, Column 1

McCalls 6027 Size:6-12 Part:1 www.printsew.com



Fold line
Pliiez ligne
Dobiese linies

Miss size AA (6-8-10-12)

McCALL'S M6027

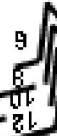
SLEEVE B
MANCHE
MANGA

Cut 2

Coupez 2
Cortese 2

Ch R P

Grainline
Droit fil
Hilo de la tela



EASE



9

Row B, Column 1

McCalls 6027 Size:6-12 Part:1 www.printsew.com

HEM 1 1/4" (3.2 CM)
CURLET
DOBLADILLO

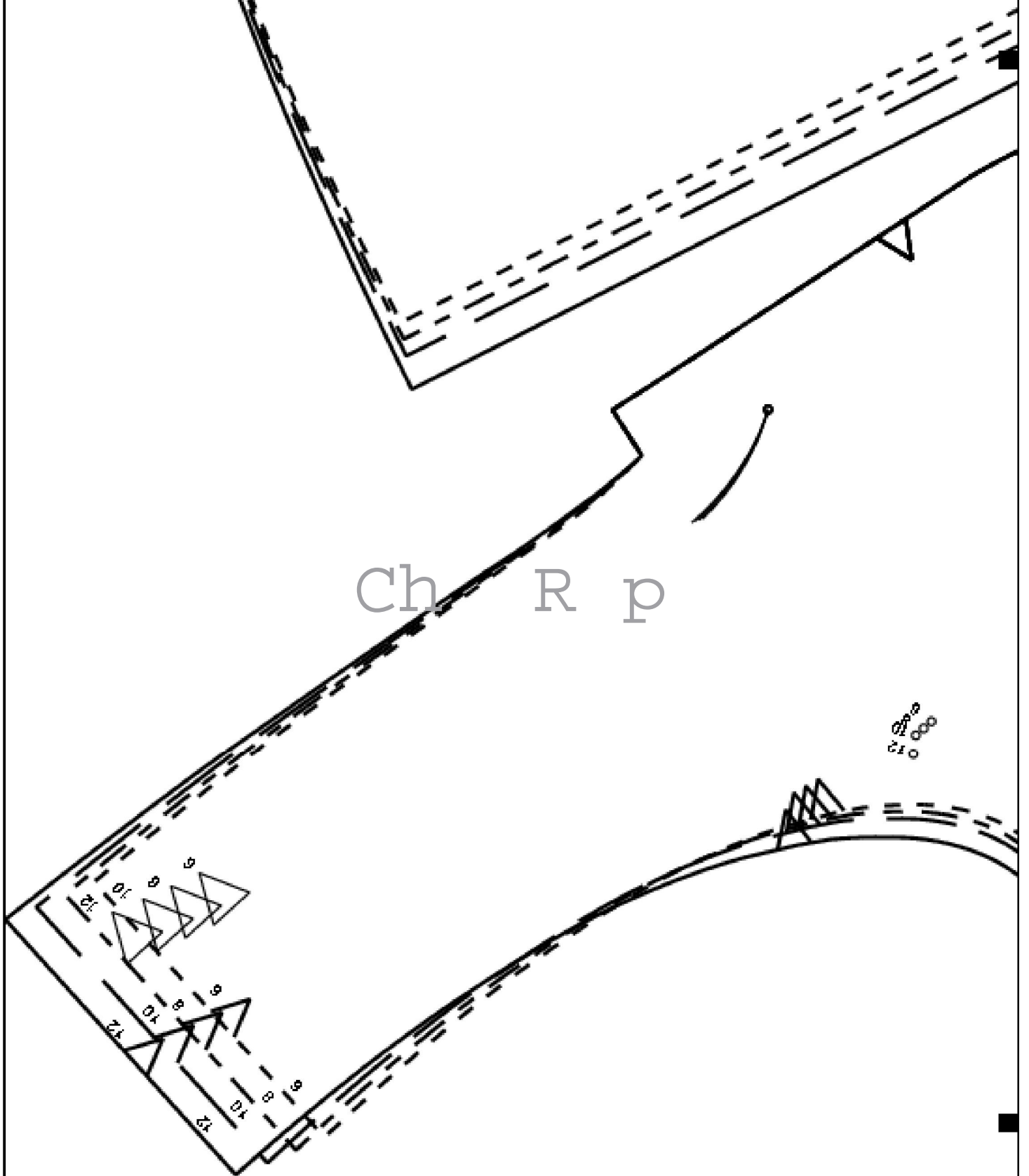
Ch R p

LENGTHEN OR SHORTEN HERE



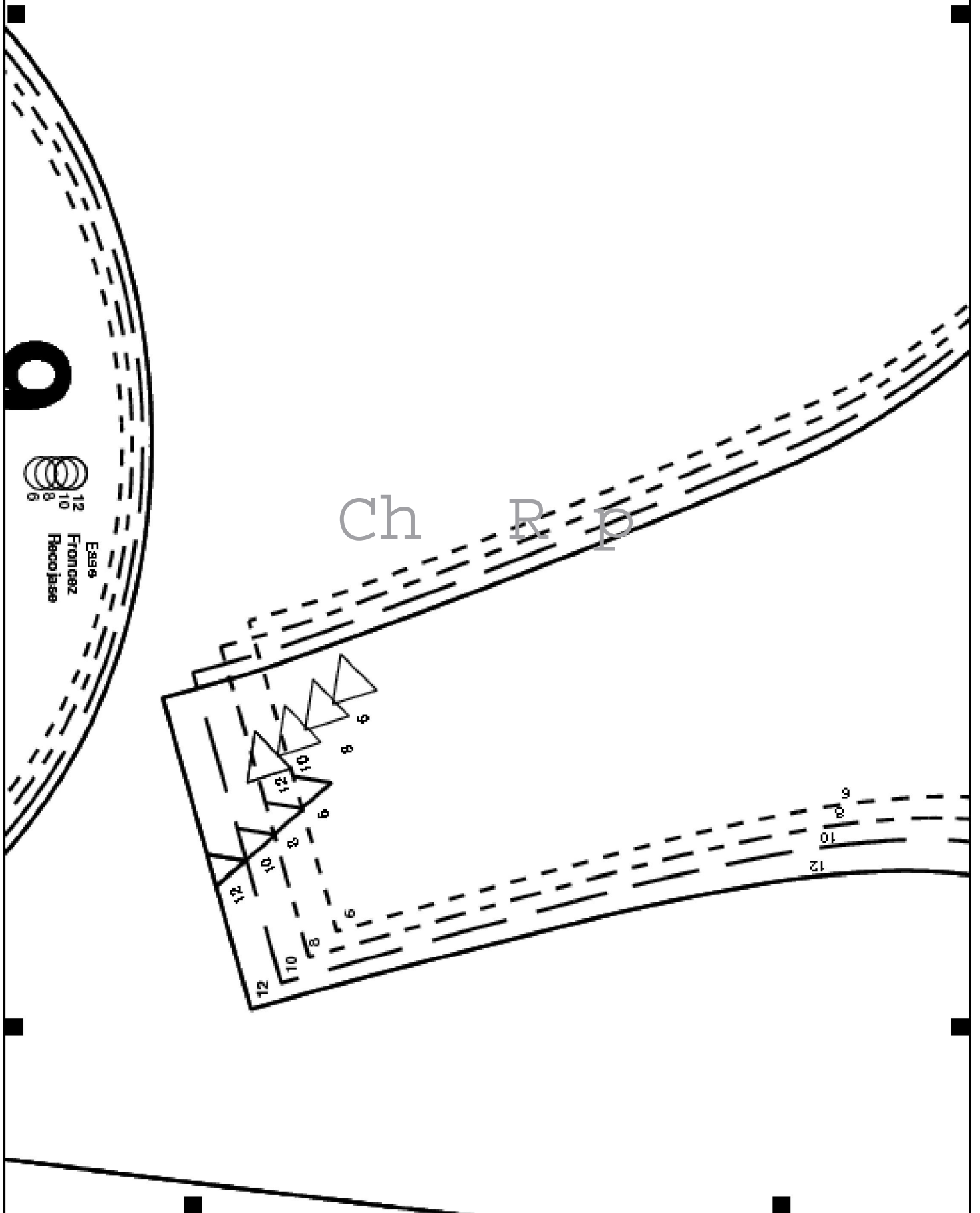
Row C, Column 1

McCalls 6027 Size:6-12 Part:1 www.printsew.com



Row A, Column 2

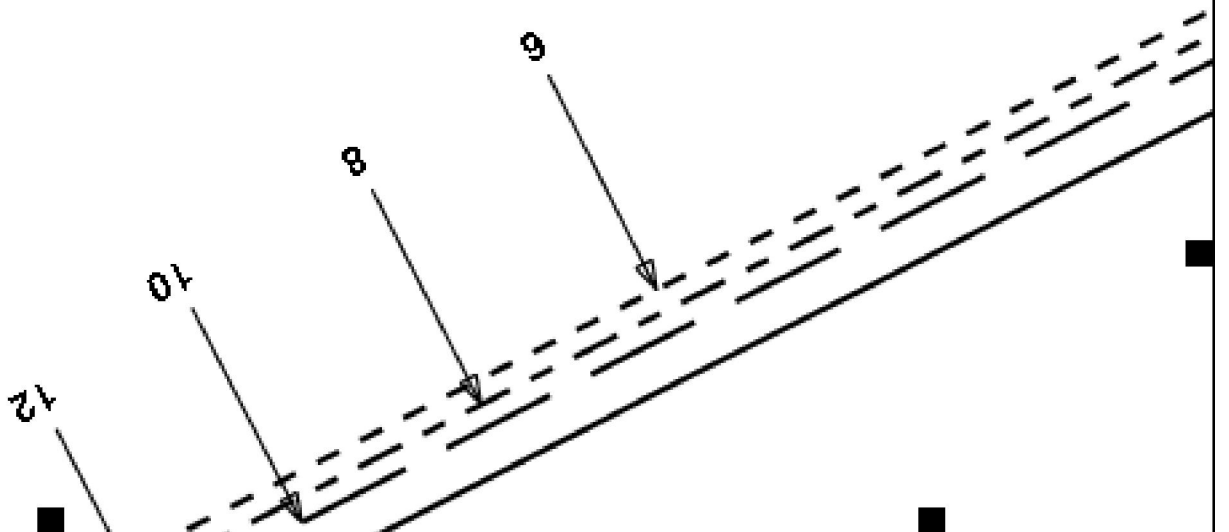
McCalls 6027 Size:6-12 Part:1 www.printsew.com



Row B, Column 2

McCalls 6027 Size:6-12 Part:1 www.printsew.com

Ch R p



2

SIDE FRONT A B C D

COTE DEVANT
COSTADO DEL FRENTE

Cut 2

Coupez 2
Cortesia 2

MCCALL'S

M6027

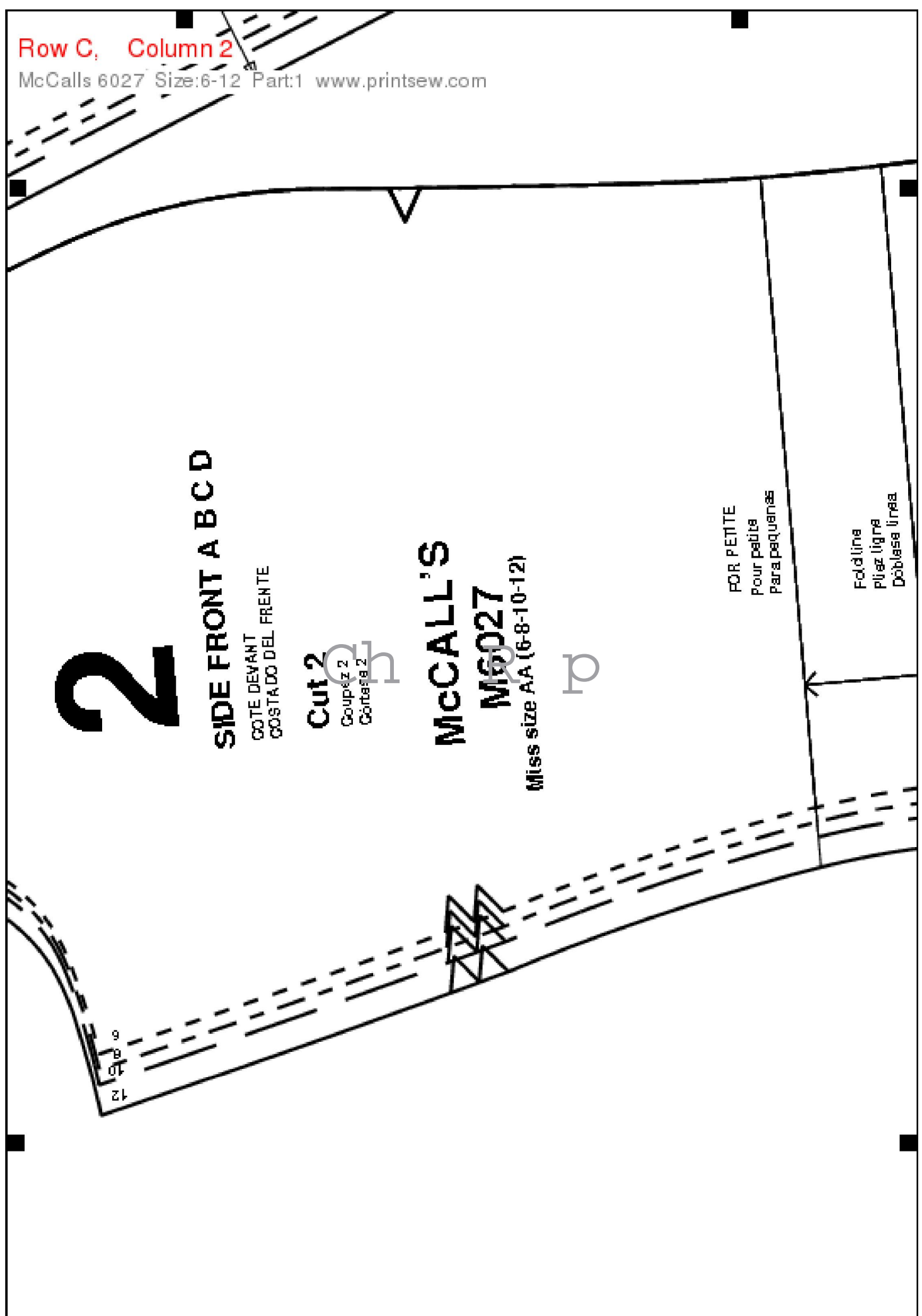
Miss size AA (6-8-10-12)



FOR PETITE
Pour petite
Para pequeñas

Fold line
Pliez ligne
Dóblase línea

6
8
10
12



CENTER BACK
MILIEU DOS
CENTRO DE BUSTO

Grainline

Droit fil
Hilo de la tela

8

BACK LINING A B C D

DOUBLURE D'OS
FORRO DE LA ESPALDA

Lining: Cut 2

Doublure: Coupez
Forro: Cortese

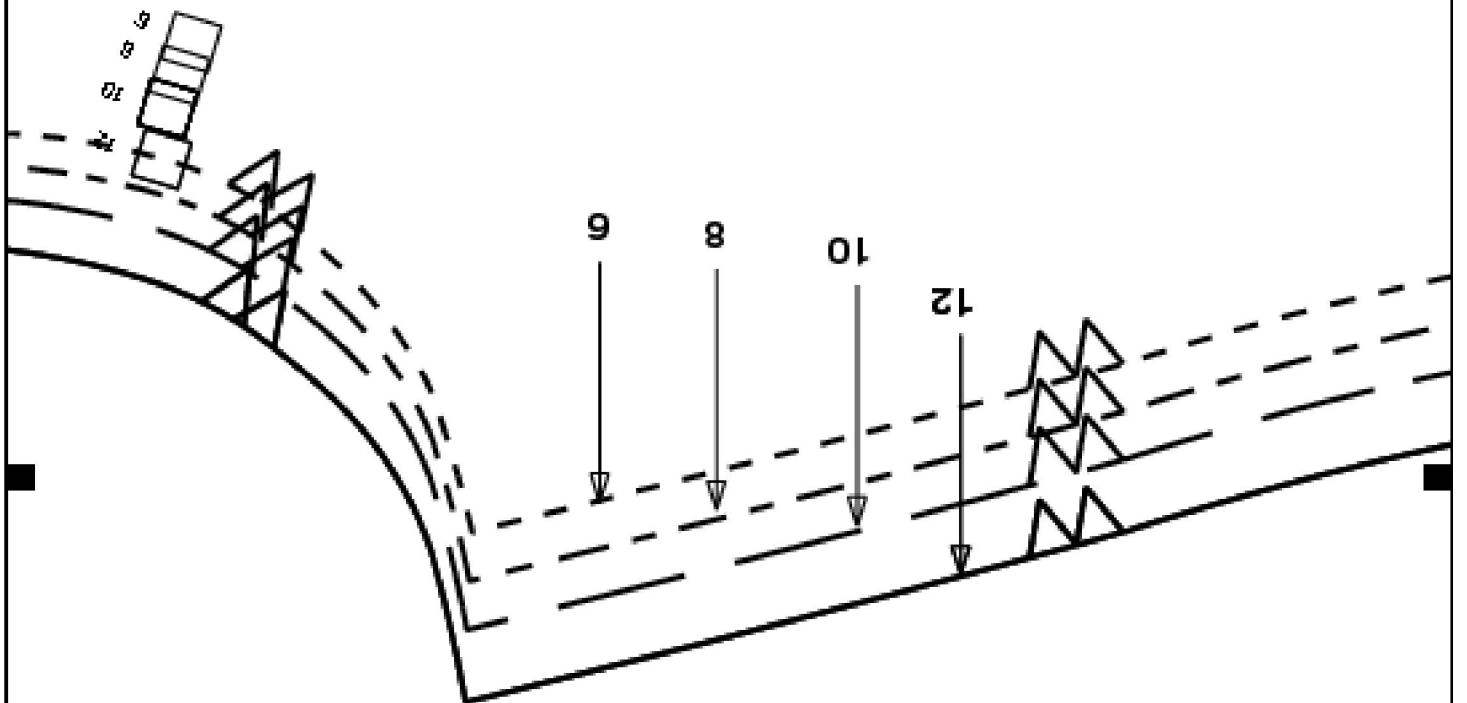
Interfacing: Cut 2

Entredoublure: Coupez 2
Entretela: Cortese 2

MCCALL'S

6027

Miss size AA (6-8-10-12)



Row B, Column 3

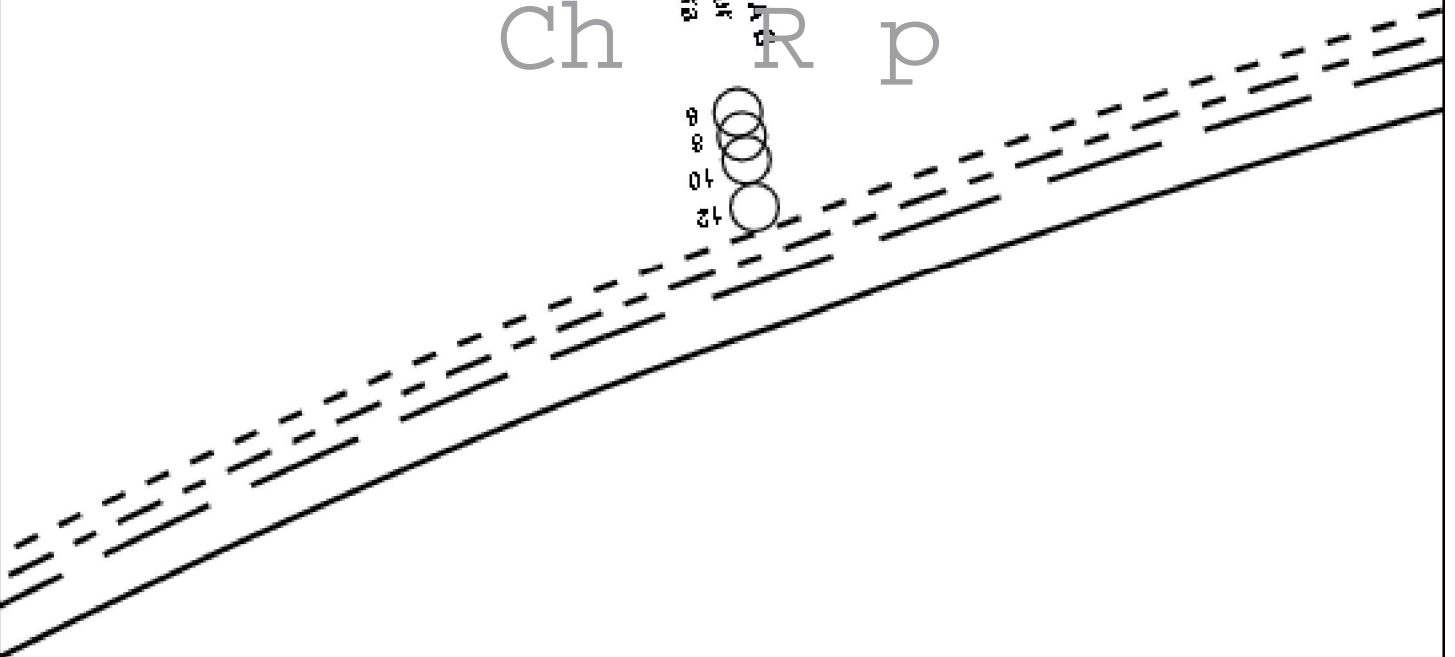
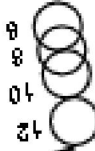
McCalls 6027 Size:6-12 Part:1 www.printsew.com

FOR A B

1/2"

Ch R p

FOR A B
PATTERN
PART



Row C, Column 3

McCalls 6027 Size:6-12 Part:1 www.printsew.com

FOR A B
POUR
PARA ○

LENGTHEN OR SHORTEN HERE

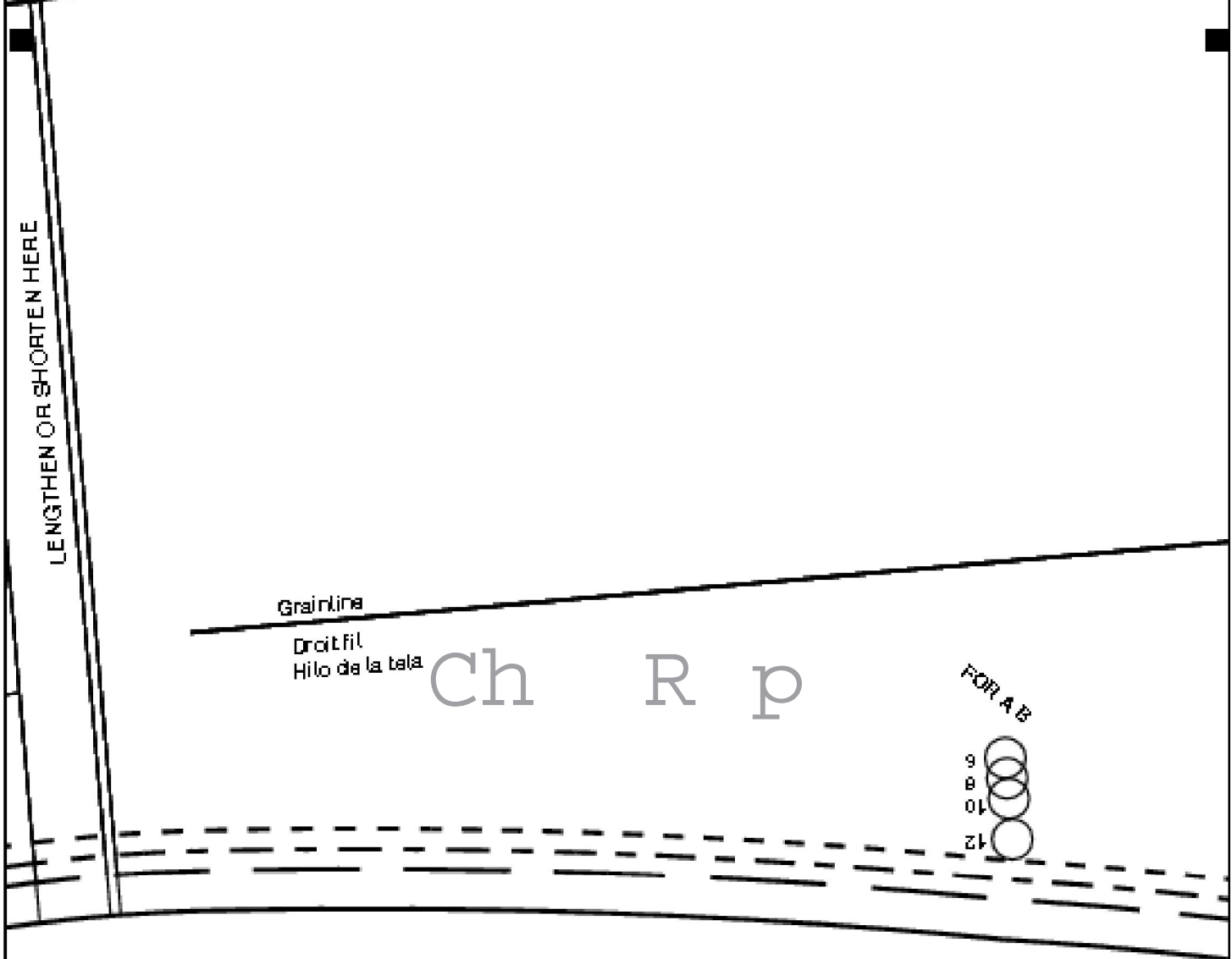
Grainline

Droit fil
Hilo de la tela

Ch R p

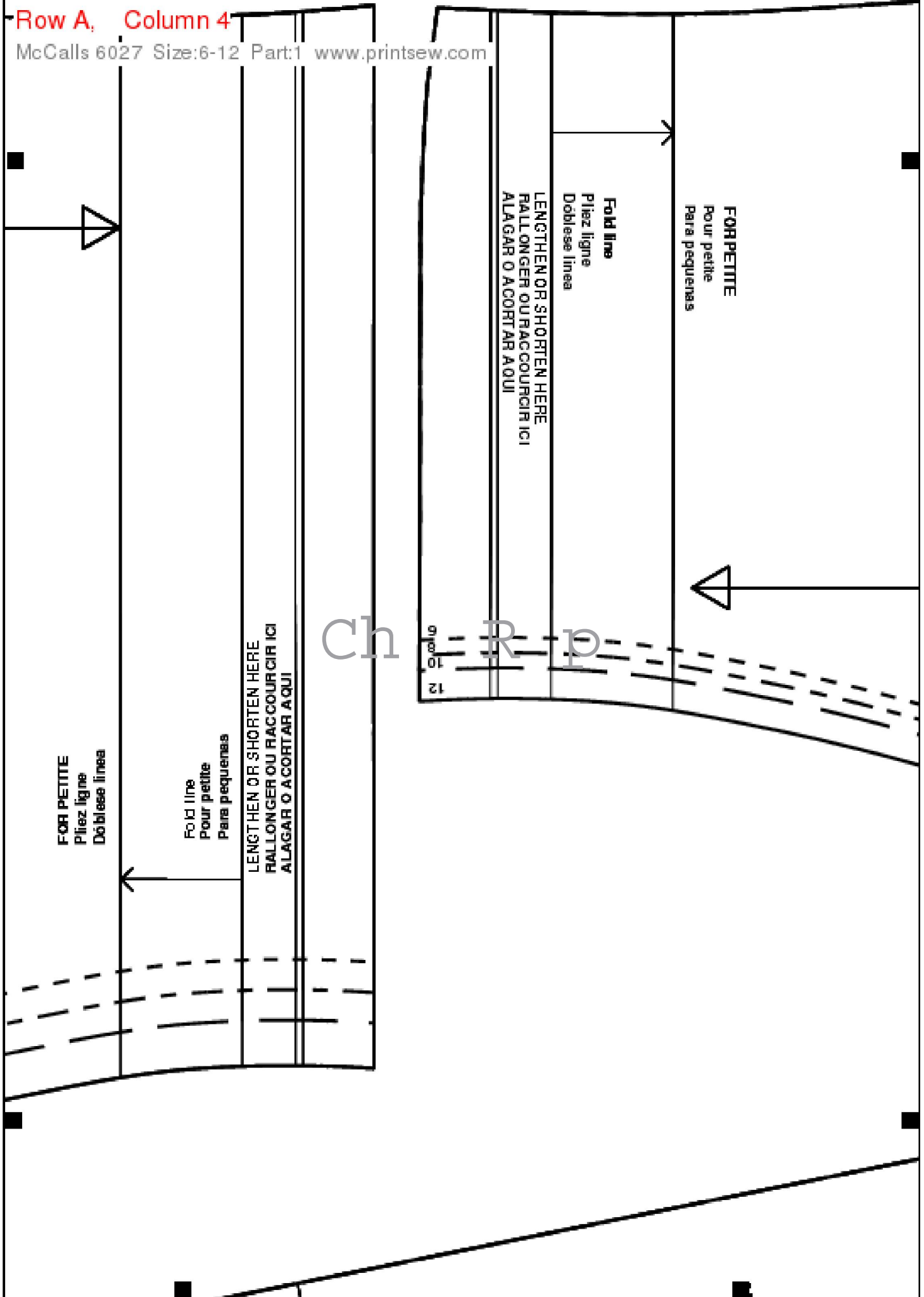
FOR A B

9
8
10
12 ○



Row A, Column 4

McCalls 6027 Size:6-12 Part:1 www.printsew.com



MCCALL'S

M6027

Size AA (5-8-10-12)

Row B, Column 4

McCalls 6027 Size:6-12 Part:1 www.printsew.com

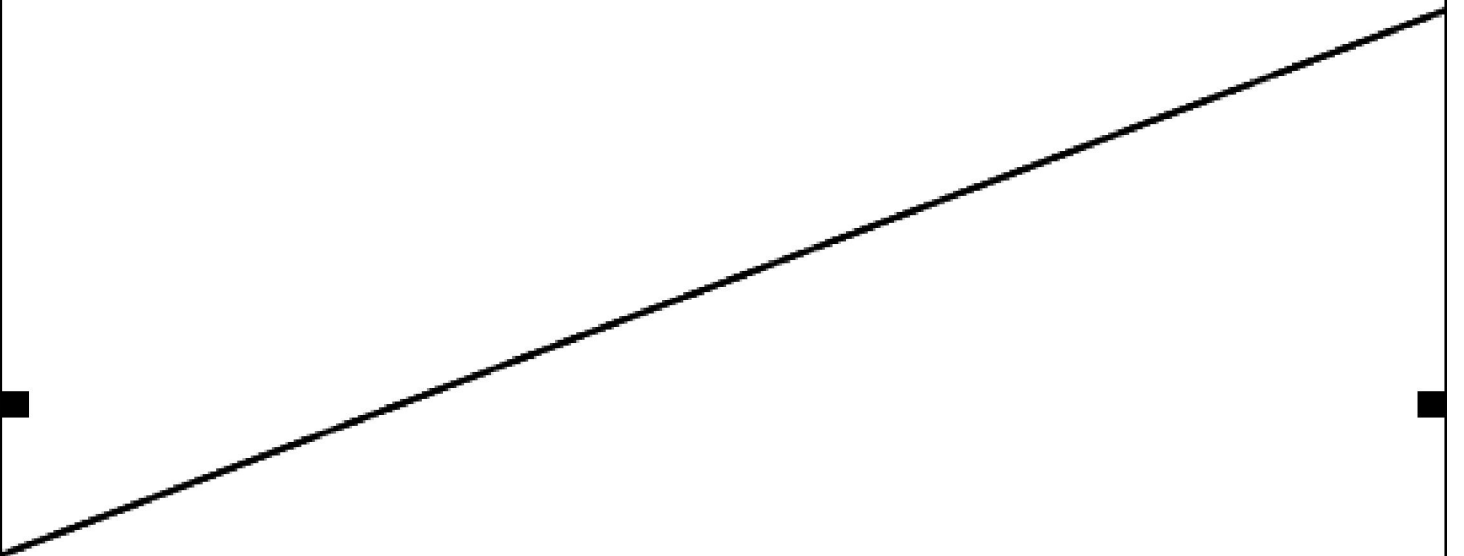
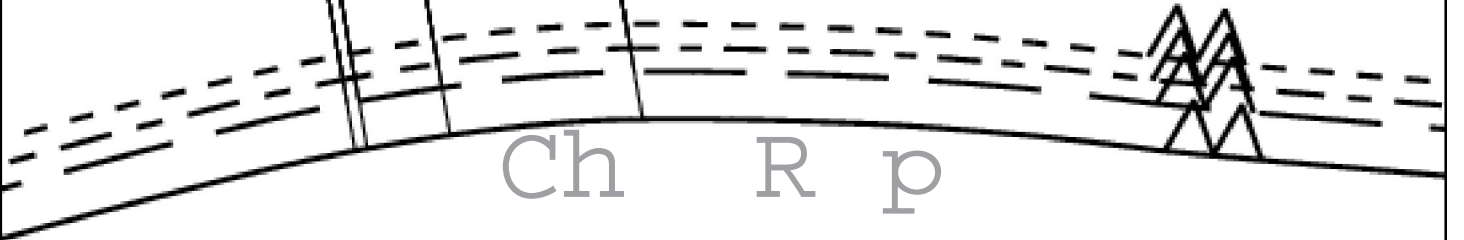
FOR PETITE
pour petites
pour petites

Fold line
pliez ligne
Dobies linea

LENGTHEN OR SHORTEN HERE
RALLONGER OU RACCOURCIR ICI
ALARGAR O ACORTAR AQUÍ

Grain line
Droit de la
fil de la

Ch R p



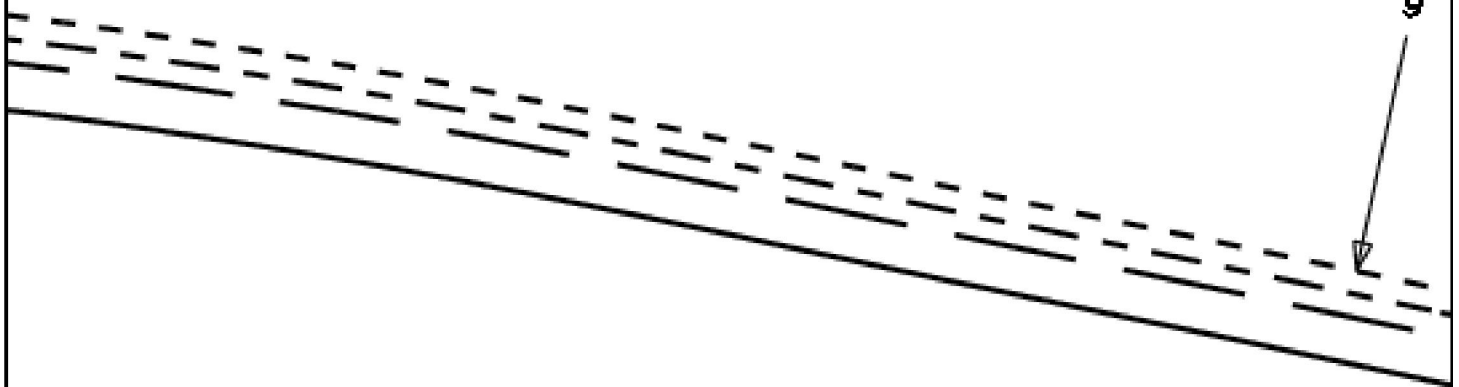
Row C, Column 4

McCalls 6027 Size:6-12 Part:1 www.printsew.com



6 48" (122CM)
8 48" (124CM)
10 50" (127CM)
12 51 1/2" (130CM)

Ch R p



Miss size AA (6-8-10-12)

MCCALL'S M6027

SIDE FRONT LINING A B C D
DOUBLURE COTE DEVANT
FORRO DEL COSTADO DEL FRENTE

Lining: Cut 2
Doublure: Coupez
Forro: Cortese

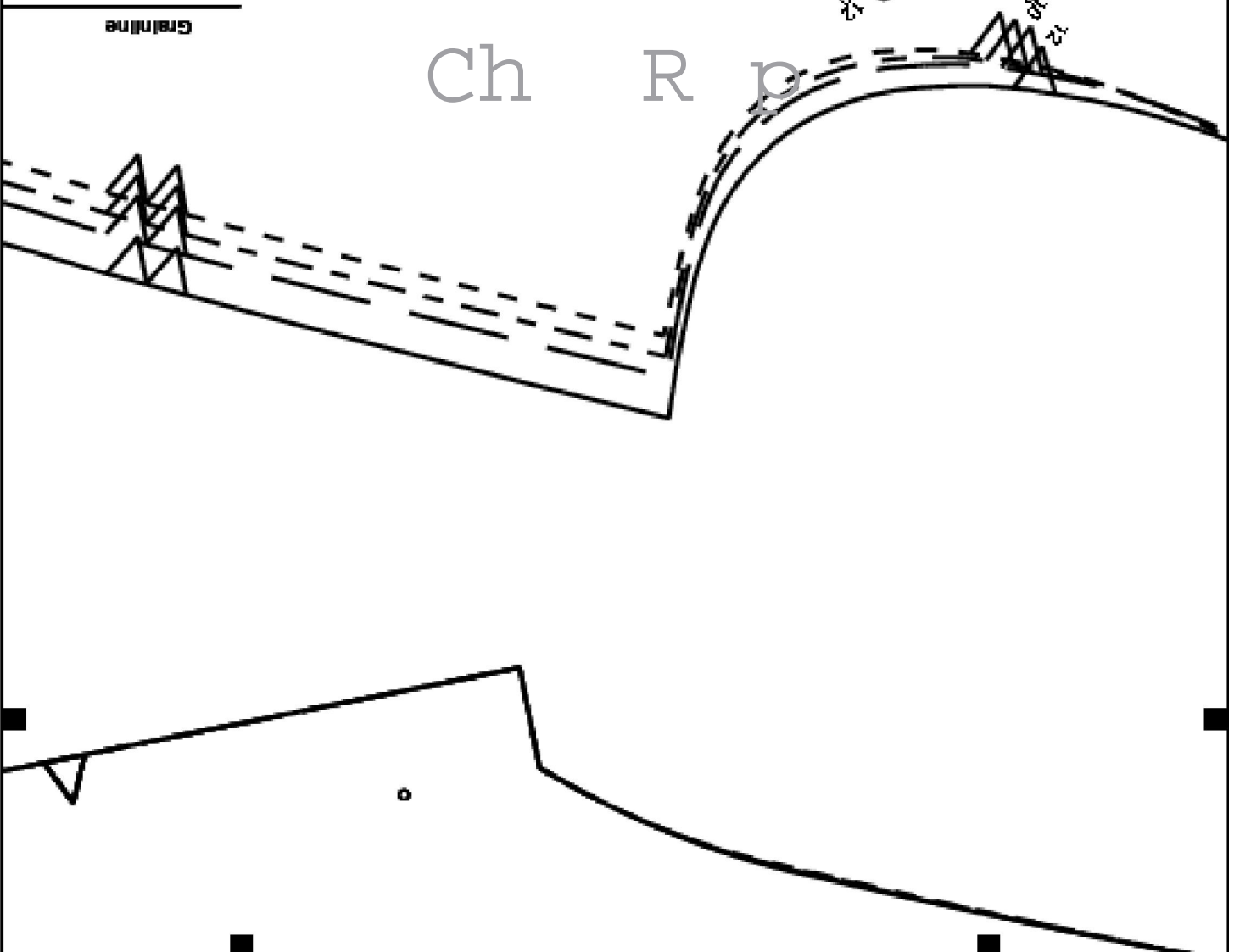
Interfacing: Cut 2
Entredoublure: Coupez 2
Entrefebla: Cortese 2



Ch R p

Droit fil
Hilo de la tela

Grainline

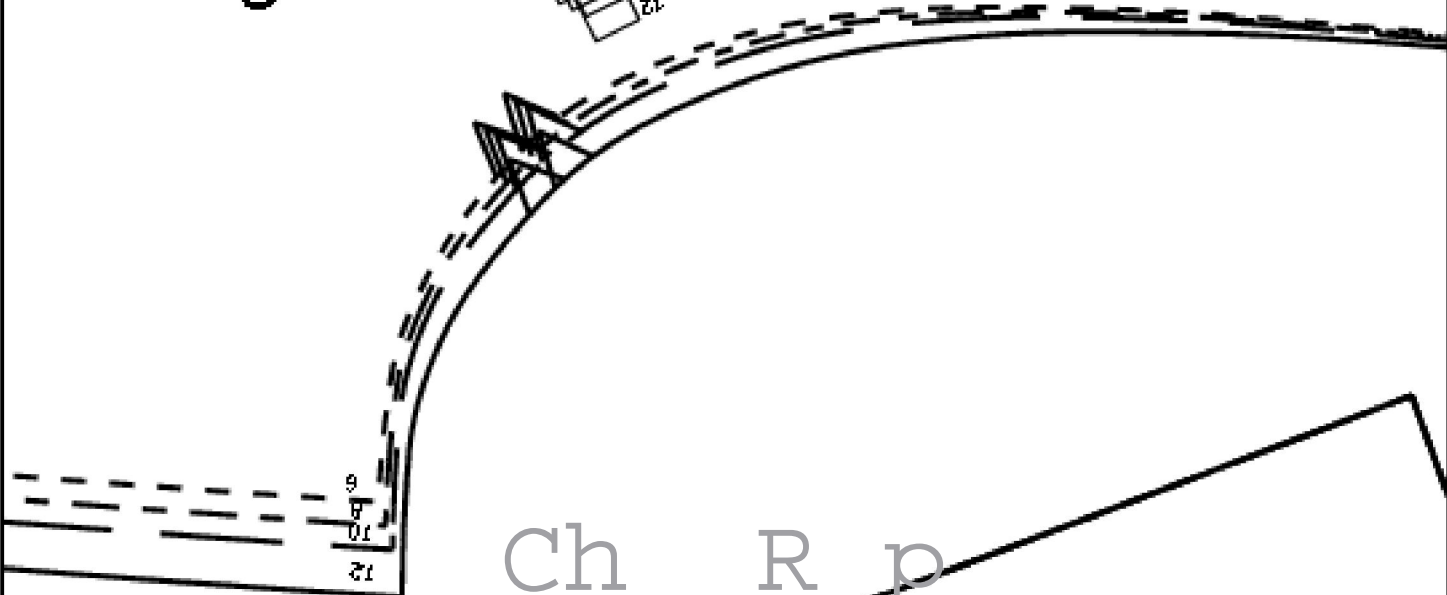


Row B, Column 5

McCall's 6027 Size:6-12 Part:1 www.printsew.com

2
1
2
3
4
5
6
7
8
9
10
11
12

1
2
3
4
5
6
7
8
9
10
11
12



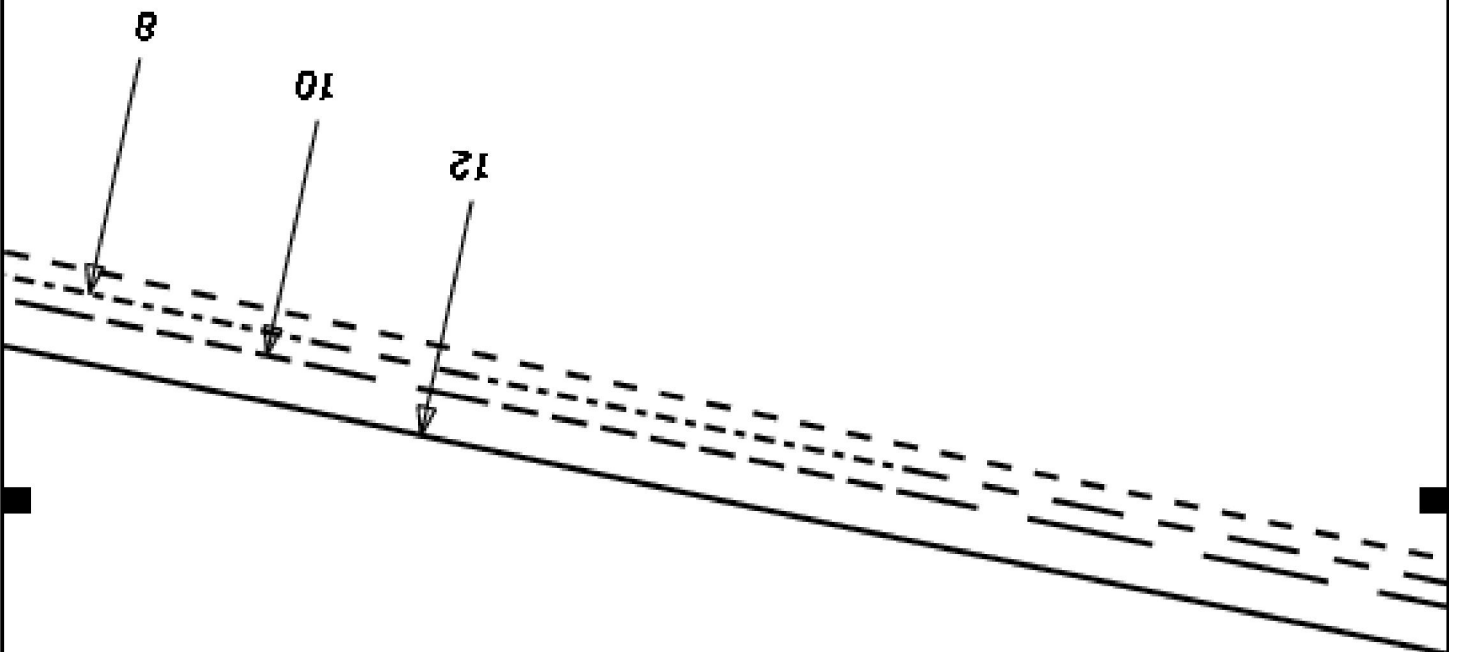
Ch R p

Row C, Column 5

McCalls 6027 Size:6-12 Part:1 www.printsew.com

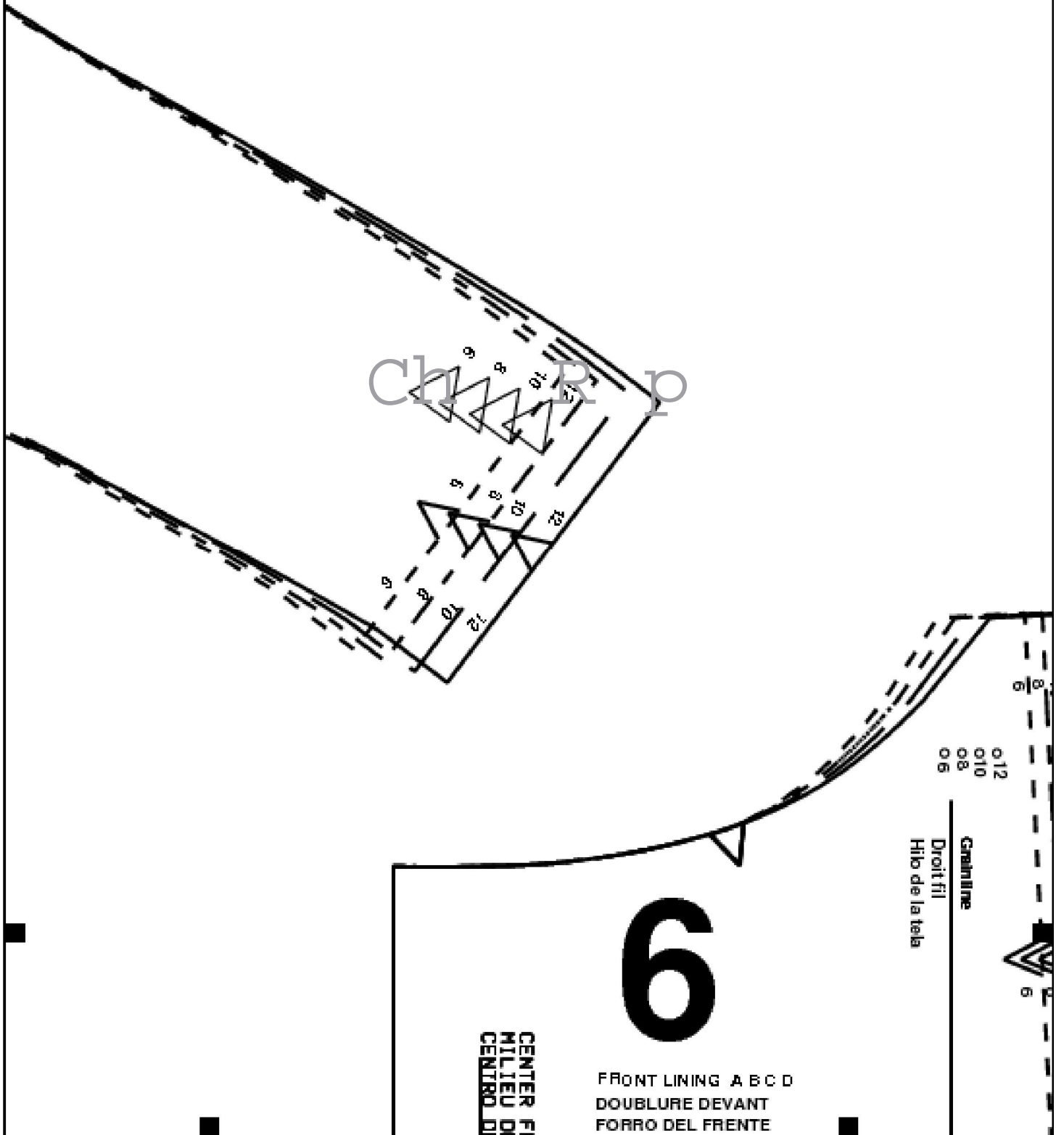


Ch R p



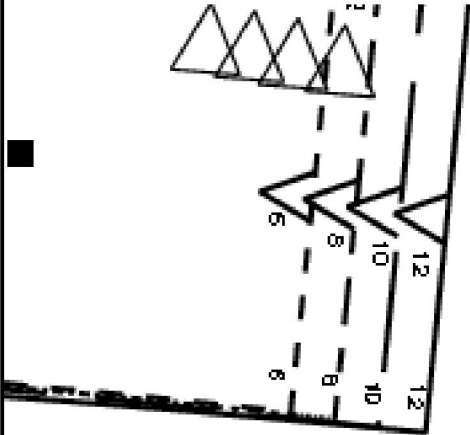
Row A, Column 6

McCalls 6027 Size:6-12 Part:1 www.printsew.com



Row B, Column 6

McCalls 6027 Size:6-12 Part:1 www.printsew.com



POINT
ÉVANT
EL ÉRE

Lining: Cut 2
 Doublure: Coupez
 Forro: Córtese
 Interfacing: Cut 2
 Entredoublure: Coupez 2
 Entretela: Córtese 2

McCALL'S M6027

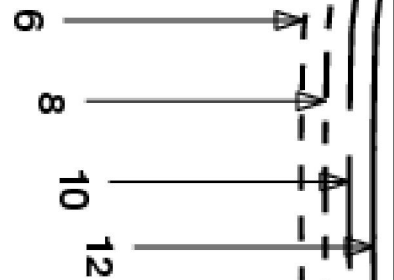
Miss size AA (6-8-10-12)

Ch R p

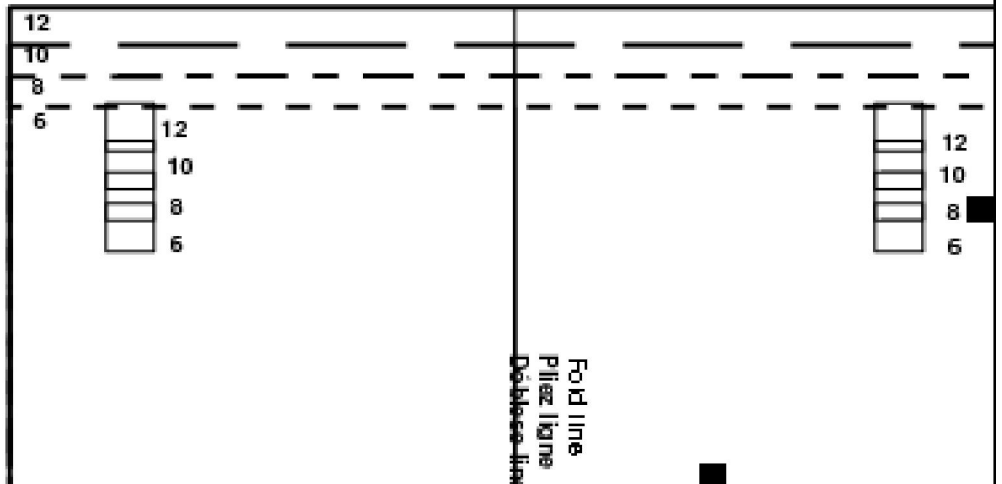
FOR PETITE
 Pour petite
 Para pequeñas

Fold line
 Pliez ligne
 Dóblese línea

LENGTHEN OR SHORTEN HERE
 RALLONGER OU RACCOURCIR ICI
 ALARGAR O ACORTAR AQUI



HEM 1 1/4" (3.2 CM)
 OURLEZ
 DOBLADILLO



Fold line
 Pliez ligne
 Dóblese línea

Row C, Column 6

McCalls 6027 Size:6-12 Part:1 www.printsew.com

Grainline
Droit III
Hilo de la tela



10

SLEEVE D

MANCHE
MANGA

Cut 2



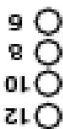
McCALL'S

M6027

Miss size AA (6-8-10-12)



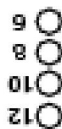
Ease
Froncez
Recójase



LENGTHEN OR SHORTEN HERE
RALLONGER OU RACCOURCIR ICI
ALARGAR O ACORTAR AQUI



6027



6027

Row A, Column 7

McCalls 6027 Size:6-12 Part:1 www.printsew.com

HEN 1/4" (0.2CM)
OUR ET
DOBLADO

Ch R p

LENGTHEN OR SHORTEN HERE
RALLONGER OU RACCOURCIR ICI
ALARGAR O ACORTAR AQUÍ



12
10
8

12
10
8

This neckline is 7 3/4" (19.7CM) below base of neck
Cette ligne d'échancrure est à 19.7CM au-dessous de la base du cou
Este es corte queda 19.7CM por debajo de la base de cuello

3

BACK A B C D
DOS
ESPALDA

Cut 2

Coupeur 2
Corteo 2

McCALL'S

Ch R p

LENGTHEN OR SHORTEN HERE
BY ALLOWING OR BY CONSTRUCTING
A LARGER OR SMALLER APOUR

HEM 1 1/2" (3.2 CM)

Ch R p



Row A, Column 8

McCalls 6027 Size:6-12 Part:1 www.printsew.com

Ch R p

Gravine
Droit III
Hilo de la tela

GODET A B
GODET
QUEVILLE
CUT 7
Couture 7
Couture 7
MCCALL'S
M6027
Miss size AA (6-8-10-12)

M6027
Miss size AA (6-8-10-12)

FOR PETITE
Pour petite
Para pequeñas

Fold line
Pliez ligne
Dobráse linia

LENGTHEN OR SHORTEN HERE
RALLONGER OU RACCOURCIR ICI
ALARGAR O ACORTAR AQUÍ

Grain line
Droit fil
Hilo de la tela

If you alter, retrace all lines
En cas de rectification, retracer toutes les lignes
Al modificar el patrón, volver a trazar todas las líneas

WASTELINE
LIGNE
CINTURE

12

10

8

ch R p

Row C, Column 8

McCalls 6027 Size:6-12 Part:1 www.printsew.com

6

MCCALL'S
© 2010 The McCall Pattern Company
All Rights Reserved
Printed in U.S.A.
M6027
Miss size AA (6-8-10-12)

Ch R p

Row A, Column 9

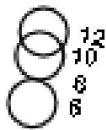
McCalls 6027 Size:6-12 Part:1 www.printsew.com

Ch R p

57

Row B, Column 9

McCalls 6027 Size:6-12 Part:1 www.printsew.com



For A B
Pour
Para

es and symbols as on unaltered pattern.
es et repères dans leur position initiale.
r todas las líneas y símbolos tal como estaban antes de modificar.

Ch R p



Row C, Column 9

McCalls 6027 Size:6-12 Part:1 www.printsew.com

FRONT
DEVANT
FRENTE
A B C D
Cut 2
Coupure 2
Cortadura 2



12
10
8
6
FOR A B
POUR
PARA

Ch R p

Grainline
Droit de
Miro de la laine

FOR A B

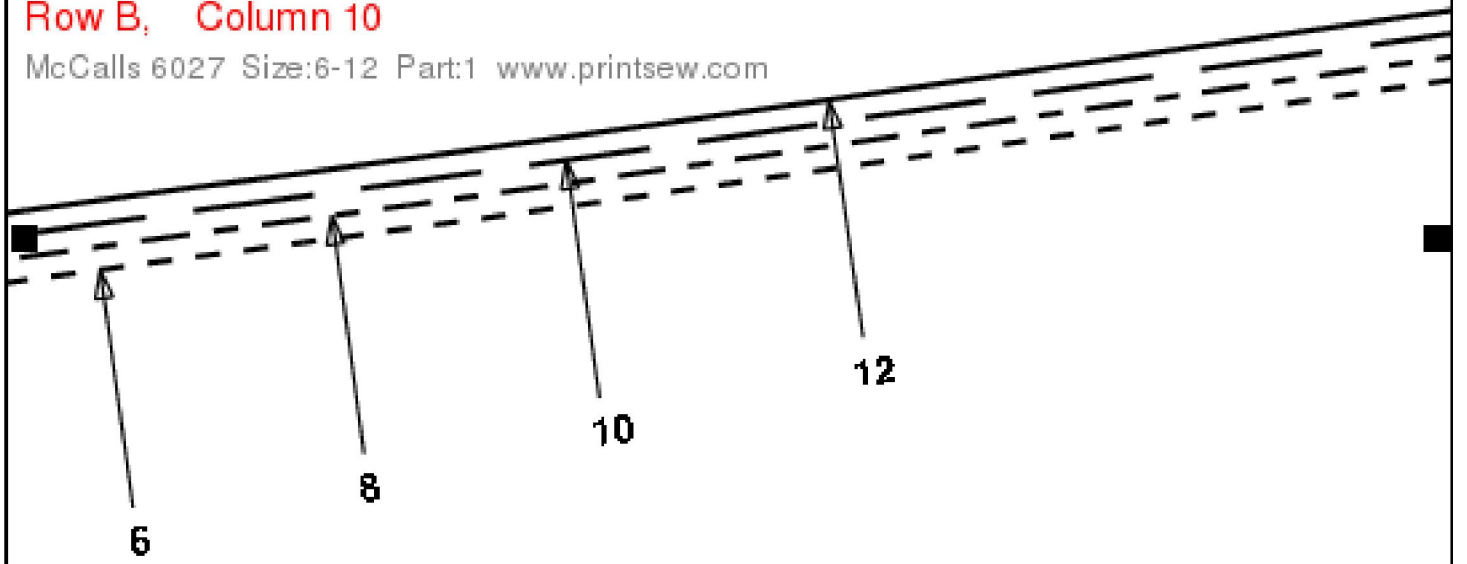
Row A, Column 10

McCalls 6027 Size:6-12 Part:1 www.printsew.com

Ch R p

Row B, Column 10

McCalls 6027 Size:6-12 Part:1 www.printsew.com



Ch R p

Row A, Column 11

McCalls 6027 Size:6-12 Part:1 www.printsew.com

Ch R p



Ch R p

LENGTHEN OR SHORTEN HERE
RALLONGER OU RACCOURCIR ICI
ALARGAR O ACORTAR AQUI

FM 1 7/8" (3.2 CM)
URLEY
BLADILLO

Row C, Column 11

McCalls 6027 Size:6-12 Part:1 www.printsew.com

PA
OF
00

