



DRESSMAKING AMÒRE

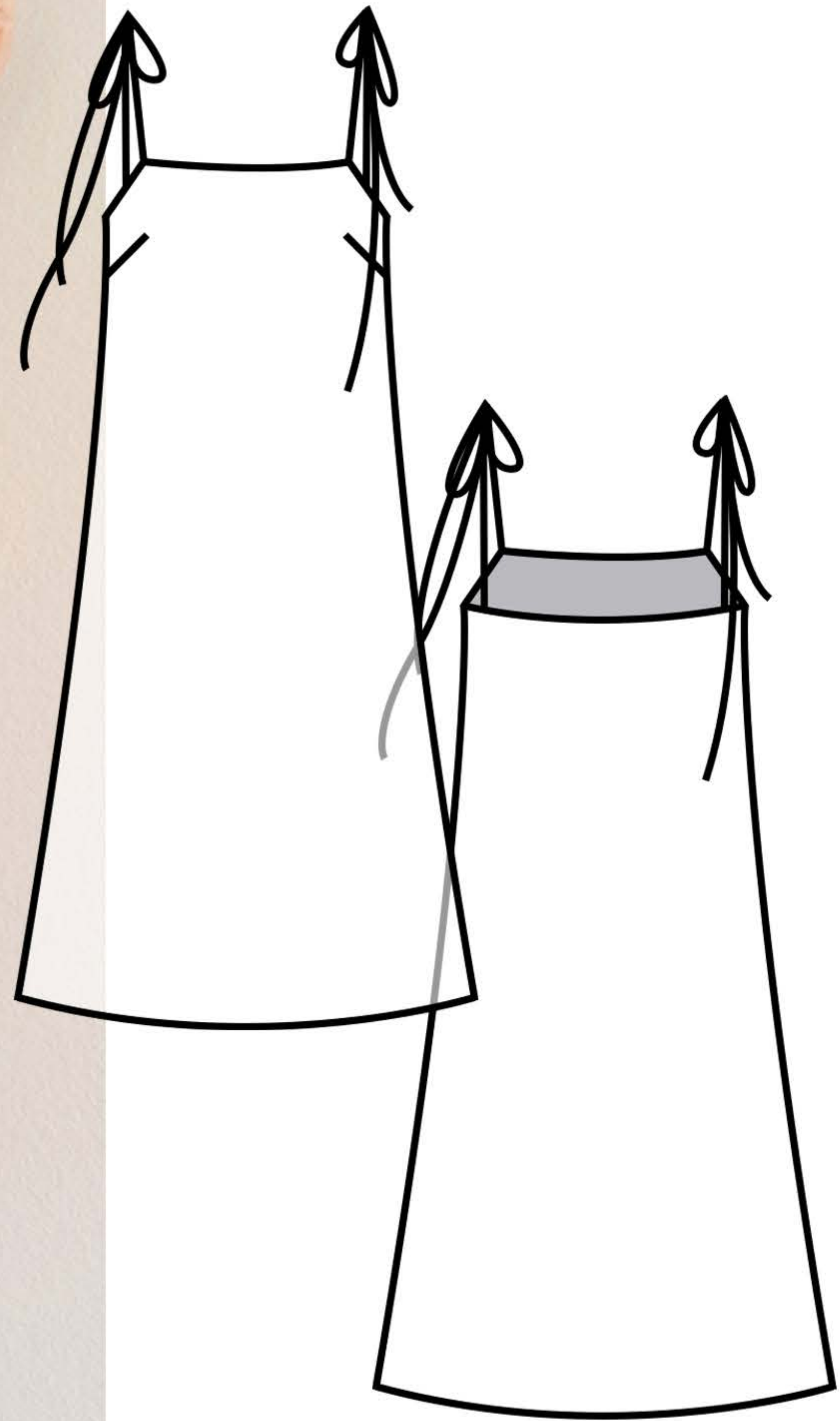


LAVENDER DRESS

#221

SIZE: US 2-20

COMPLEXITY:



dressmakingamore.com

©2023 DRESSMAKING AMÒRE

LAVENDER DRESS

TABLE OF CONTENTS

DESCRIPTION

Design description of the Lavender dress, with fabric & tools recommendations.

0 1

MATERIALS

What materials and tools you will need for your dress for best results.

0 2

SIZING CHART

Take measurements, and use the sizing chart to choose which size pattern to use.

0 3

PRINTING THE PATTERN

How to correctly print your pattern, using the included step-by-step video.

0 4 - 0 6

PATTERN PIECES

Check personal measurements, and check how many pattern pieces to cut.

0 7

CUTTING INSTRUCTIONS + FABRIC LAYOUT

Cut out your fabric based on the pattern size & needed pattern pieces.

0 8 - 1 0

SEWING STEPS

Simple, detailed sewing steps to guide you through the process.

1 1 - 1 4

TA DAA!

Share a photo of your finished piece using the **hashtag #dapatterns!**

1 5

+ BONUS

Complete design checklist for the entire sewing process of the pretty Lavender dress!

LAVENDER DRESS

DESCRIPTION

A testament to the timeless allure of simplicity, this straight-silhouette dress drapes with beautiful contemporary control, balancing the classic lines with charming, lighthearted ties bouncing and flowing in the wind. The straight-edge neckline frames the décolletage in quiet grace, harmoniously mirroring the elegant hem of the Lavender dress.

DETAILS & FIT

- Straight A-line silhouette
- Relaxed fit
- Mini (60 cm length at CB) or Midi (99 cm length at CB)
- No closure: spaghetti strap ties on shoulders
- Straight neckline
- Unlined

FABRIC RECOMMENDATIONS

Woven light-medium weight fabric that holds its shape, doesn't stretch, and isn't see through: Linen, Lawn, Cotton, Poplin. If you don't want the dress to hold the A-line silhouette you can go with a flowy fabric like Viscose or Silk.

On the model: (Size 6, height 175 cm)

Example vest is made in Linen.

EQUIPMENT

1. Sewing machine
3. Safety pins
4. Glass-head pins
5. Scissors
6. Measuring tape
7. Iron and an ironing board
8. Wooden Tailor's Clapper for cooling your fabric

***OPTIONAL:** Instead of a serger, you can use one of these techniques: French Seam, or a bias binding technique to finish the raw edges of the fabric.



All rights reserved. You may print this pattern and booklet for your own personal use. No part of this sewing pattern or booklet may be sold, given away, or re-shared for commercial purposes in any manner. Private use only.

Copyright ©2023 Dressmaking Amóre

LAVENDER DRESS MATERIALS

MATERIALS & TOOLS

- 1-1.75 m (1-1^{7/8} yds) light-mid weight woven fabric
- .3 m (1/3 yds) interfacing
- Matching thread
- Glasshead pins
- Scissors



Linen

Poplin

Silk

FABRIC AMOUNT (width = 150 cm/58"-60")

LENGTH	2-8	10-14	16-20
MINI	90 cm (1 yd)	1 m (1 ^{1/8} yd)	1.2 m (1 ^{1/3} yd)
MIDI	1.4 m (1 ^{1/2} yd)	1.55 m (1 ^{3/4} yd)	1.75 m (1 ^{7/8} yd)

Suggested fabric amount includes extra 5% for shrinkage and evening out.

PREP THE FABRIC

Prepping the fabric will help you avoid shrinkage. Some fabrics shrink more than others, such as ones that contain natural fibers like linen and cotton. They shrink more than synthetic fabric. So, wash* and iron them before working with them for best results.

*Wash the fabric just how you will take care of your finished piece, following the care instructions.

(Polyester fabric can be pressed and steamed.)

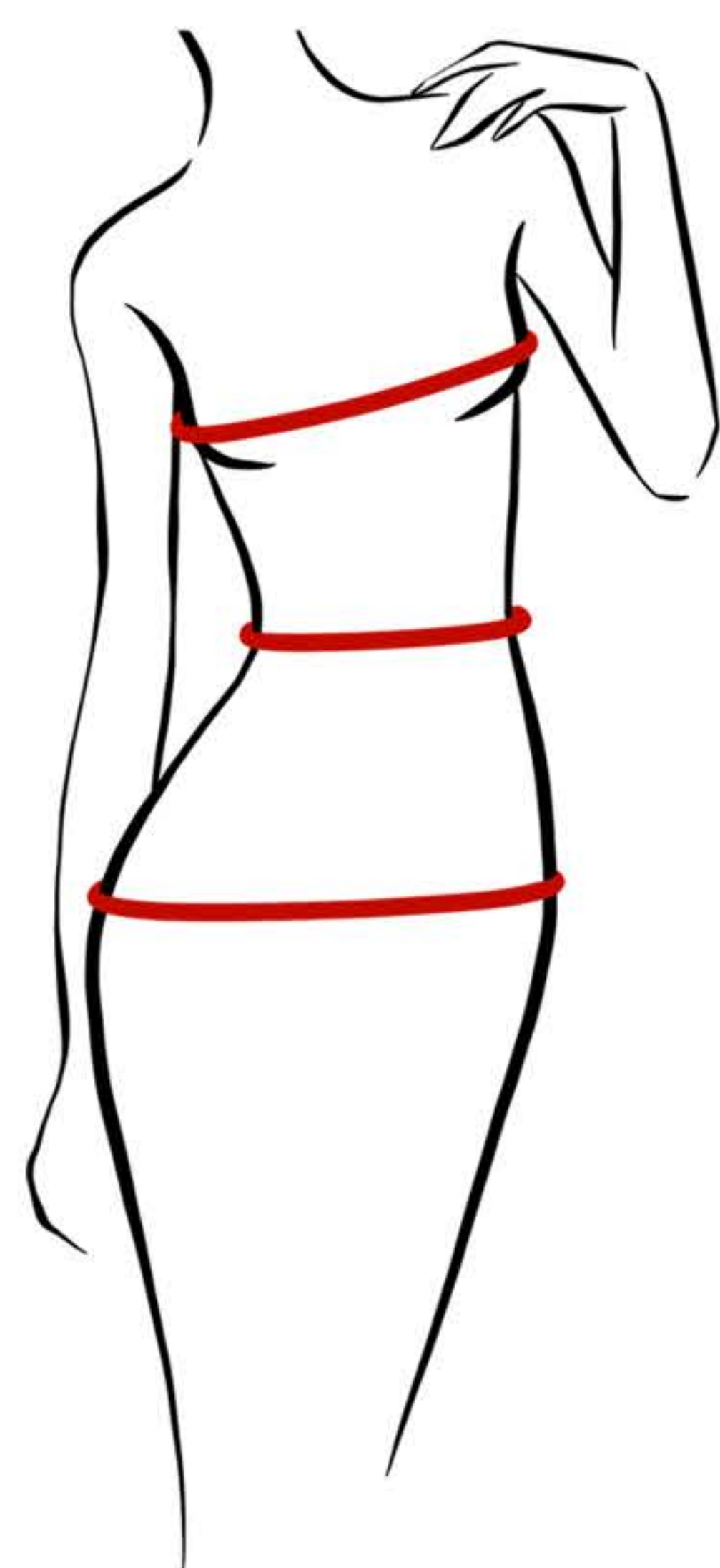
EX: Handwash, machine wash on a gentle cycle, steam, etc.

LAVENDER DRESS SIZE CHART

INTERNATIONAL		XS-S		S-M		L-XL		XL-2XL		2XL-3XL	
U.S.		2	4	6	8	10	12	14	16	18	20
EUR.		34	36	38	40	42	44	46	48	50	52
U.K.		6	8	10	12	14	16	18	20	22	24
BUST	IN.	32"	33"	34.5"	36"	37.75"	39.5"	41"	42.5"	44"	45.75"
	cm	80	84	88	92	96	100	104	108	112	116
WAIST	IN.	24.5"	26"	27"	28"	30"	31.5"	33"	34.5"	36"	38"
	cm	62	64	68	72	76	80	84	88	94	98
HIPS	IN.	34"	35.5"	37"	38.5"	40"	41.5"	43"	45"	46.5"	48"
	cm	86	90	94	98	102	106	110	114	118	122

FINISHED GARMENT MEASUREMENTS (cm)

INTERNATIONAL	XS-S		S-M		L-XL		XL-2XL		2XL-3XL	
U.S.	2	4	6	8	10	12	14	16	18	20
UNDERARM of DRESS 1/2	41	43	45	47	49	51	53	55	57	59
WAIST 1/2	43.5	45.5	47.5	49.5	51.5	53.5	55.5	57.2	60	61.5
HIP 1/2	48.5	50.5	52.5	54.5	56.5	59	61	63	65	67
FRONT LENGTH MINI	68	68	68	68	68	68.5	68.5	68.5	68.5	68.5
BACK LENGTH MINI	60	60	60	60	60	61	61	61	61	61
FRONT LENGTH MIDI	107.5	107.5	108	108	108	108.5	108.5	108.5	109	109
BACK LENGTH MIDI	99	99	99	99	99	98.5	98.5	98.5	98.5	98.5



3 key measurements:

- **BUST:** Measure over the widest part of your chest.
- **WAIST:** Bend slightly to the side, place the measuring tape around where your bend is, and measure.
- **HIPS:** Place your feet hip-width apart, and measure around the fullest part of your hips.

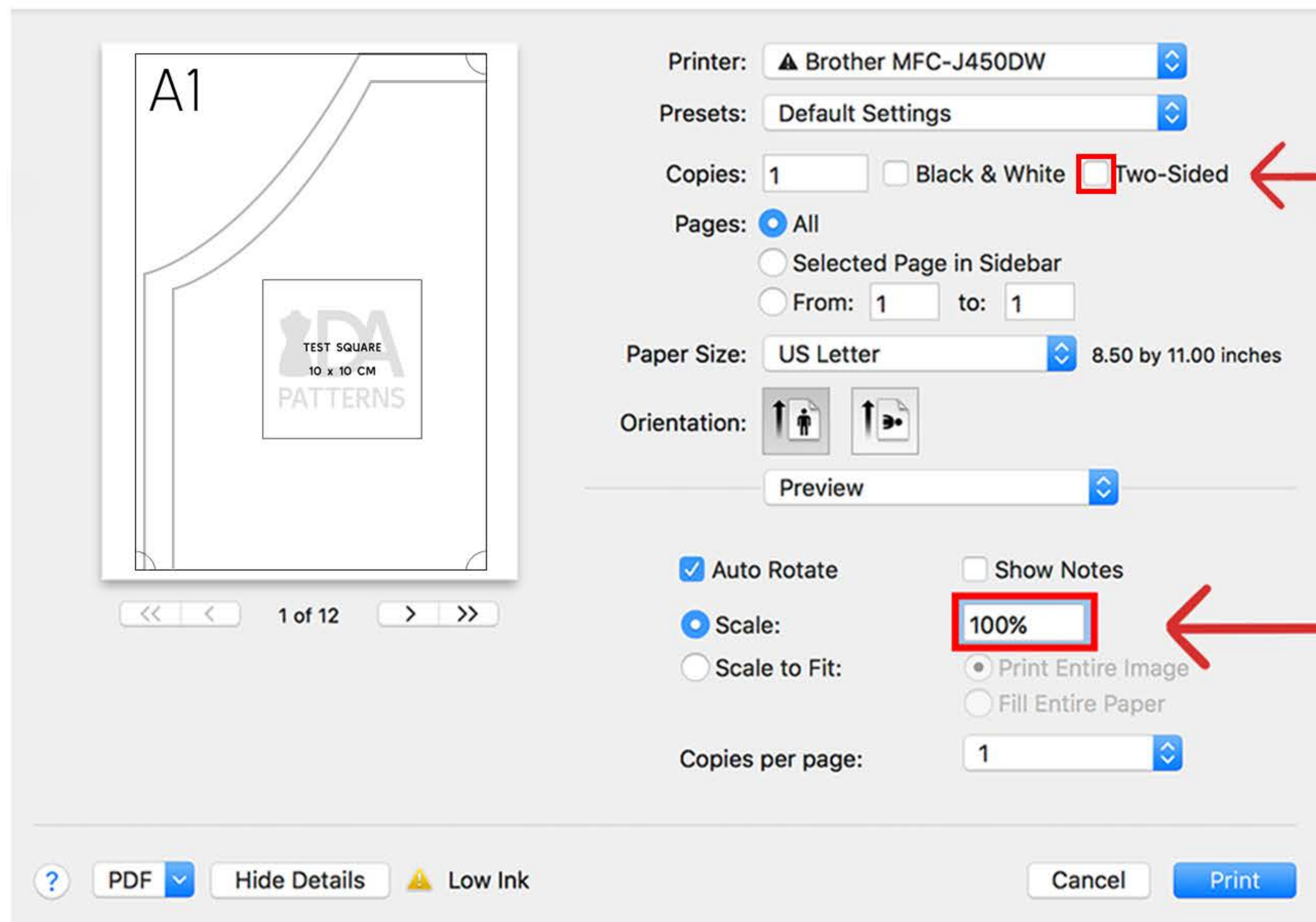
*Your measurement tape should not be too tight - you should be able to put at least 1 finger underneath the tape.

*When working on a top piece, (top/dress), choose your size pattern based on your bust measurement and adjust the waist/hip area if needed.

LAVENDER DRESS

PRINTING THE PATTERN

HOW TO PRINT



Uncheck "Two-Sided" box.

Set the 'Scale' to 100%.

***TIP:** Watch the step-by-step video lesson on how to correctly print your PDF sewing patterns on my YouTube channel: [Dressmaking Amore](#)

***If you are printing from a home printer, choose the pattern file named "A4Letter". This pattern can be printed on both A4 and Letter formats. The Letter format will have slightly smaller margins.**

Please print from a computer rather than a phone.

Uncheck the "Two-sided" box.

Set the "Scale" to 100%.

Print the first page of the pattern, **A1**.

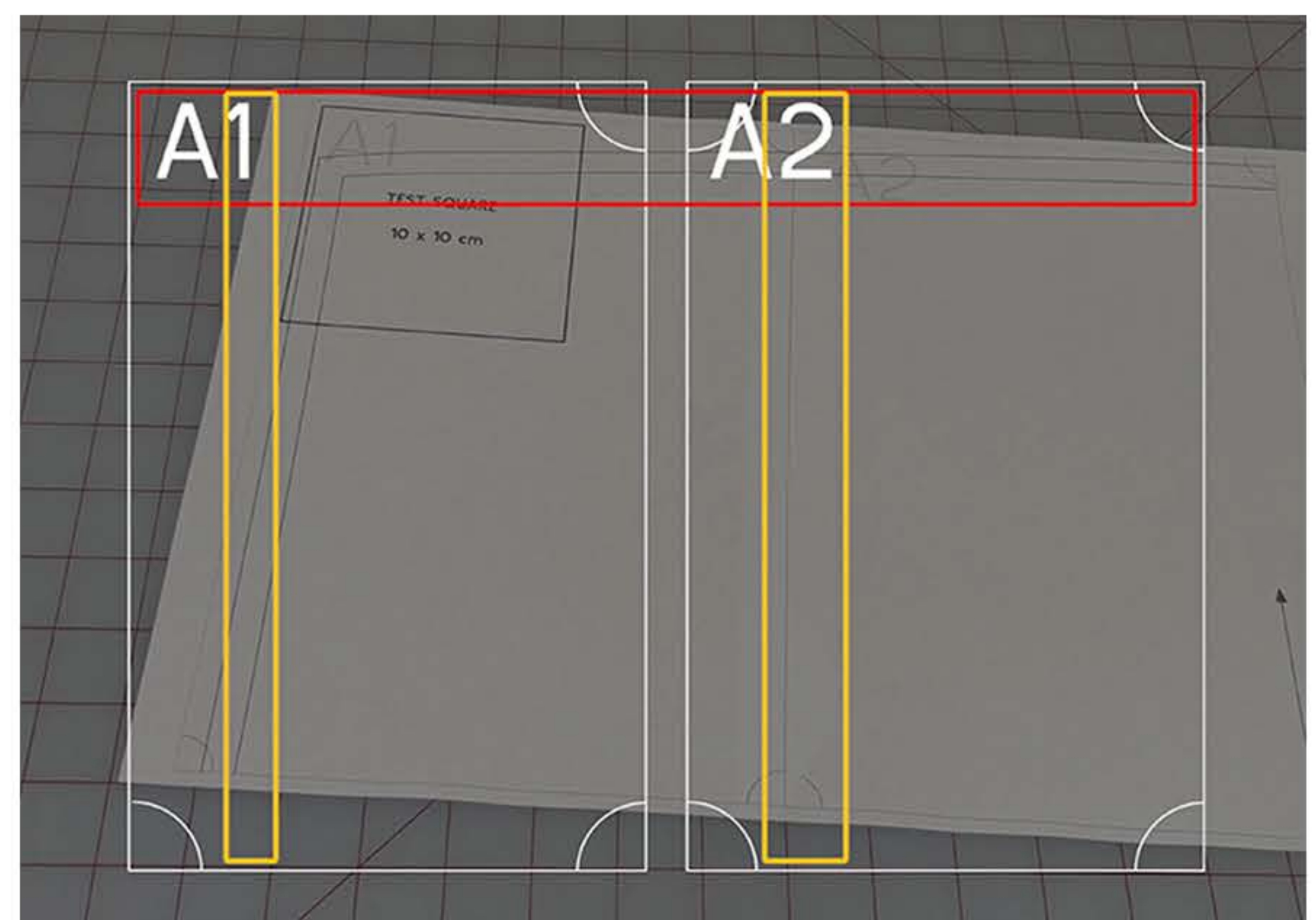
Measure the test square and make sure it is **10 cm x 10 cm**.

Print the entire pattern and tape it together.

To assemble the pattern, you will find these guides on each page that will help you put it together:

- Circles in the corners to match up the pages
- Letters indicate the rows
- Numbers indicate the columns

The pattern comes with seam allowances.



***You can also print your pattern using Adobe Acrobat Reader, choosing to print with "Actual Size" selected.**

LAVENDER DRESS

ACROBAT PRINTING

HOW TO PRINT - Using the Free Adobe Acrobat Reader program

Refer to the video tutorial on instructions for printing and assembling your paper pattern correctly with the QR code on the 1st page of the pattern, or on our YouTube Channel at Dressmaking Amore - or using this link: <https://bit.ly/howtoprintdapatterns-nested>

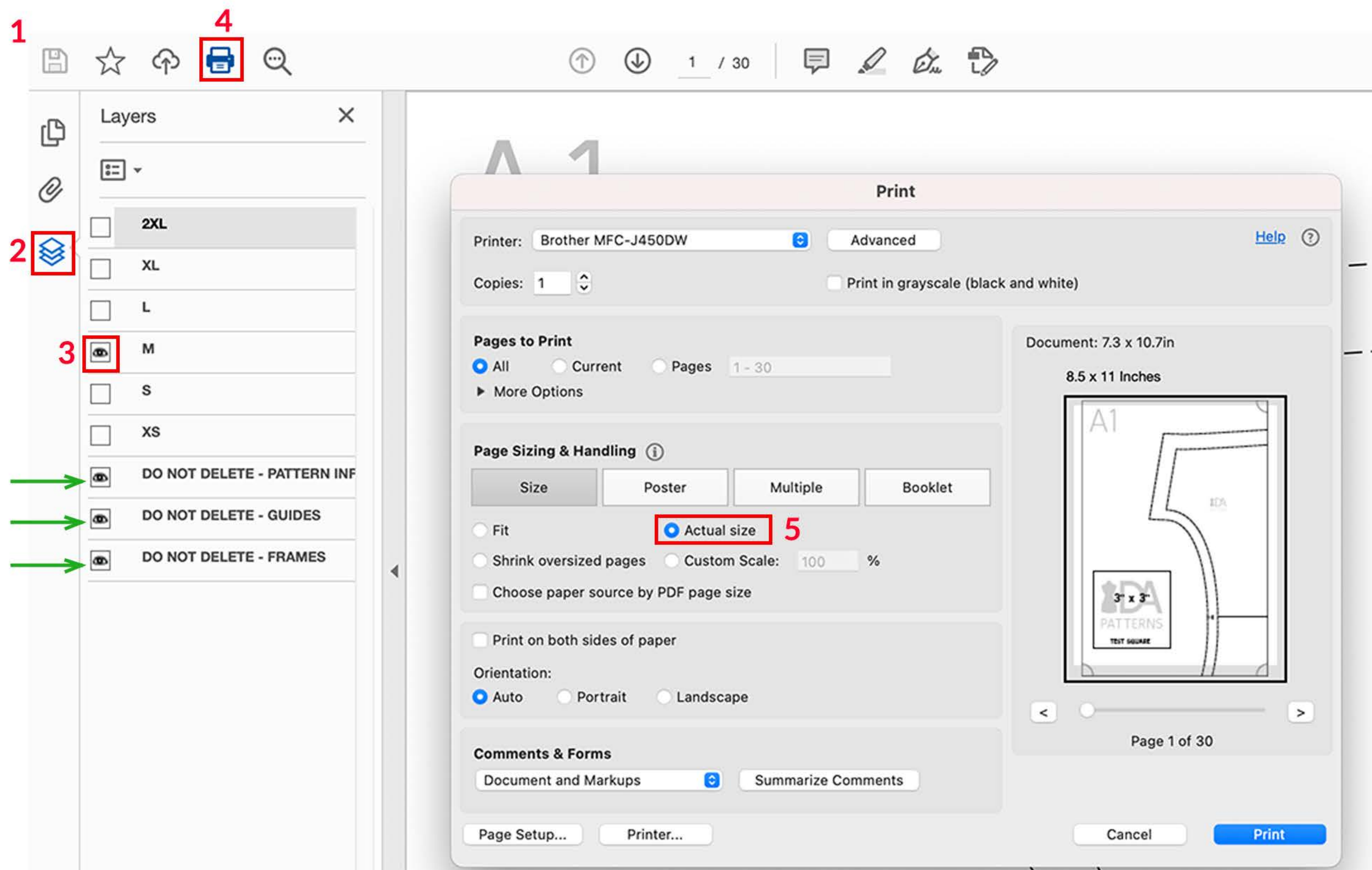
This pattern can be printed on both A4 and Letter formats. The Letter format will have slightly smaller margins.

1. Open your pattern PDF in Adobe Acrobat Reader.
2. If the pattern has layers, open the layers window.
3. Select the eye of the layer you want to open.
IMPORTANT: DO NOT close the eye of the bottom 3 layers - these include very important guiding frames for printing and cutting out your pattern.
4. Open the printing window.
5. Make sure that “Actual Size” is selected.
5. Print the first page of the pattern, **A1**. Measure the test square and make sure it is accurate.
6. Print the entire pattern and tape it together.

*The circles in the corners help you match up the pages together.

*The letters indicate the rows, and the numbers indicate the columns.

*The pattern comes with seam allowances.



ASSEMBLING THE PATTERN

Each pattern sheet has letters, numbers, and circles marked to help you assemble the pattern.

LETTERS: (highlighted in red)

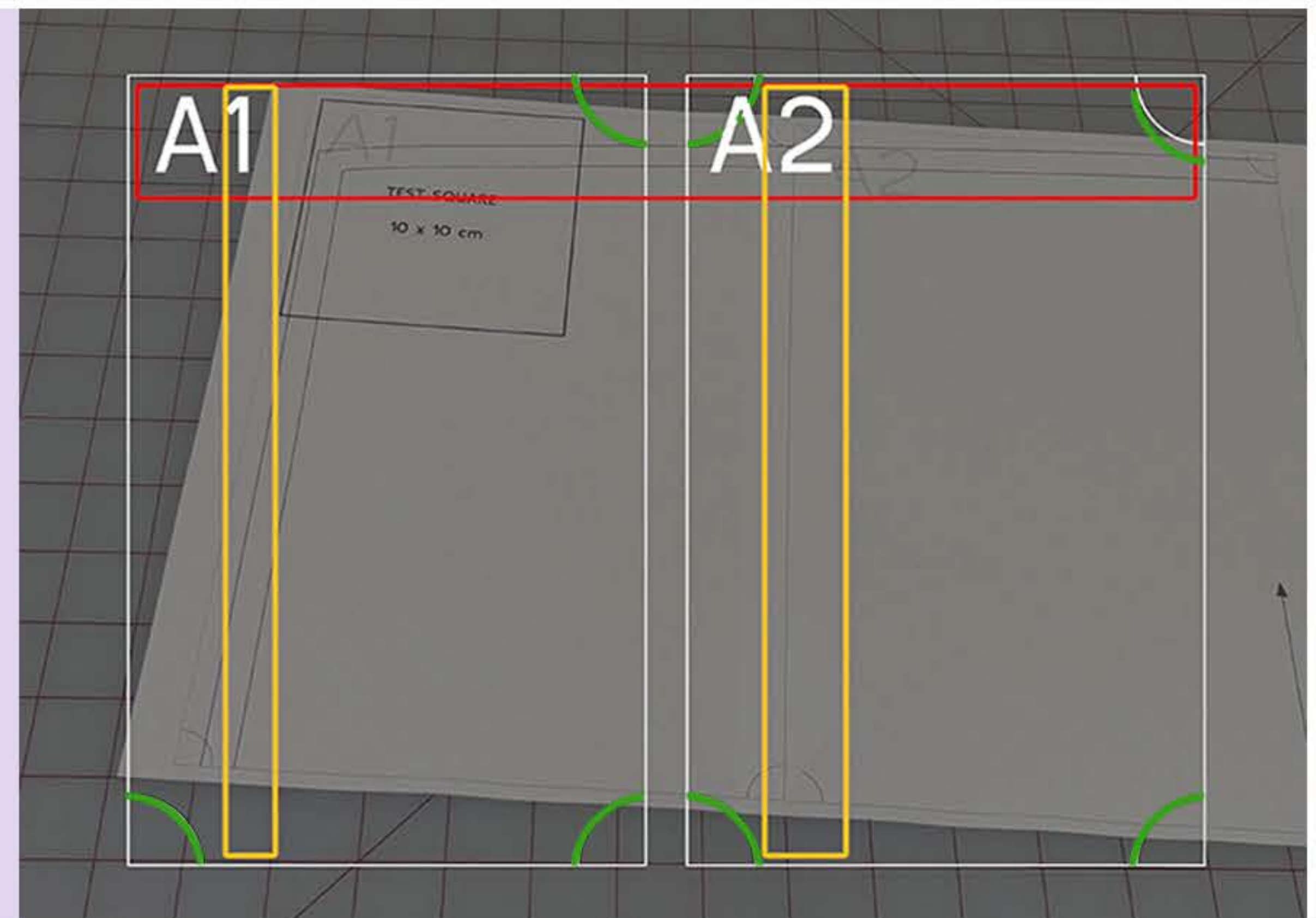
- The letters in the top left indicate the **rows**.

NUMBERS: (highlighted in yellow)

- The numbers in the top left indicate the **columns**.

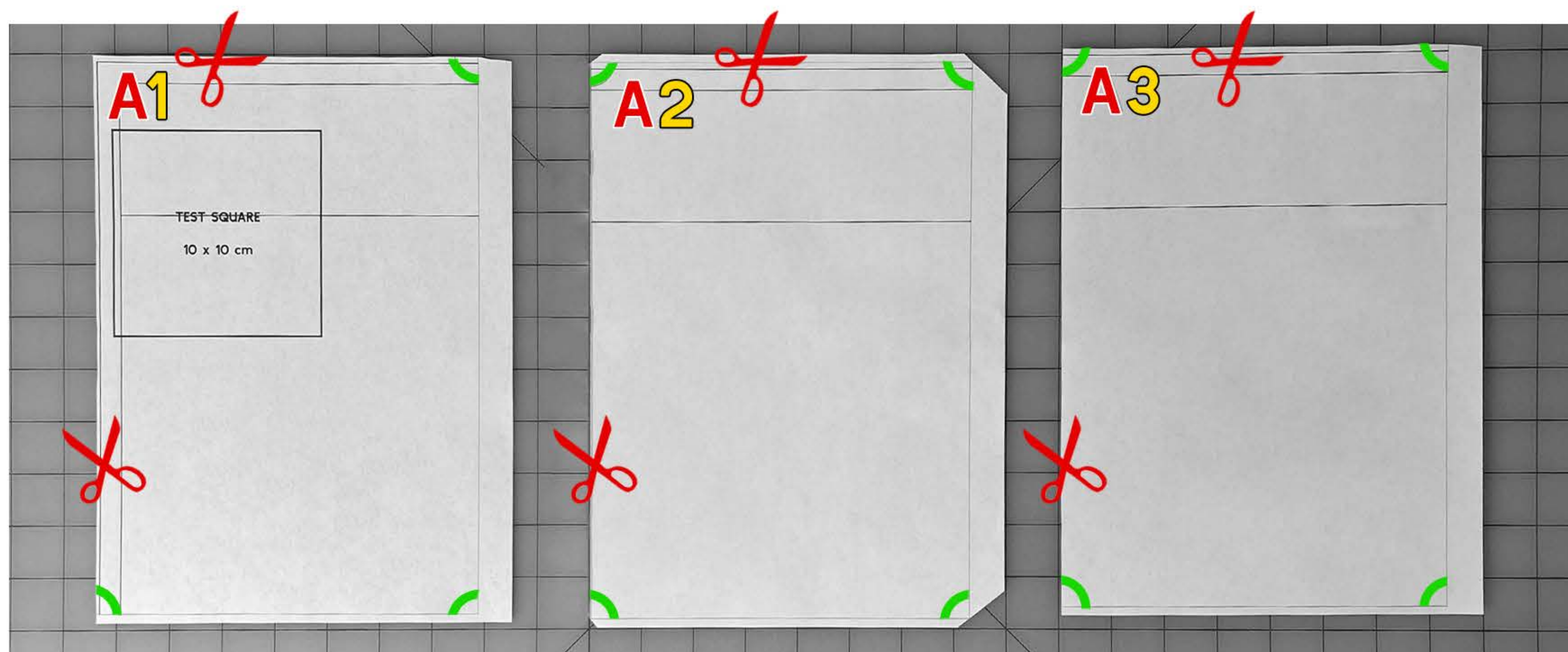
CIRCLES: (quarter circles)

- By matching up the quarter circles in the corners to create a **full circle** helps you match up the pages together.

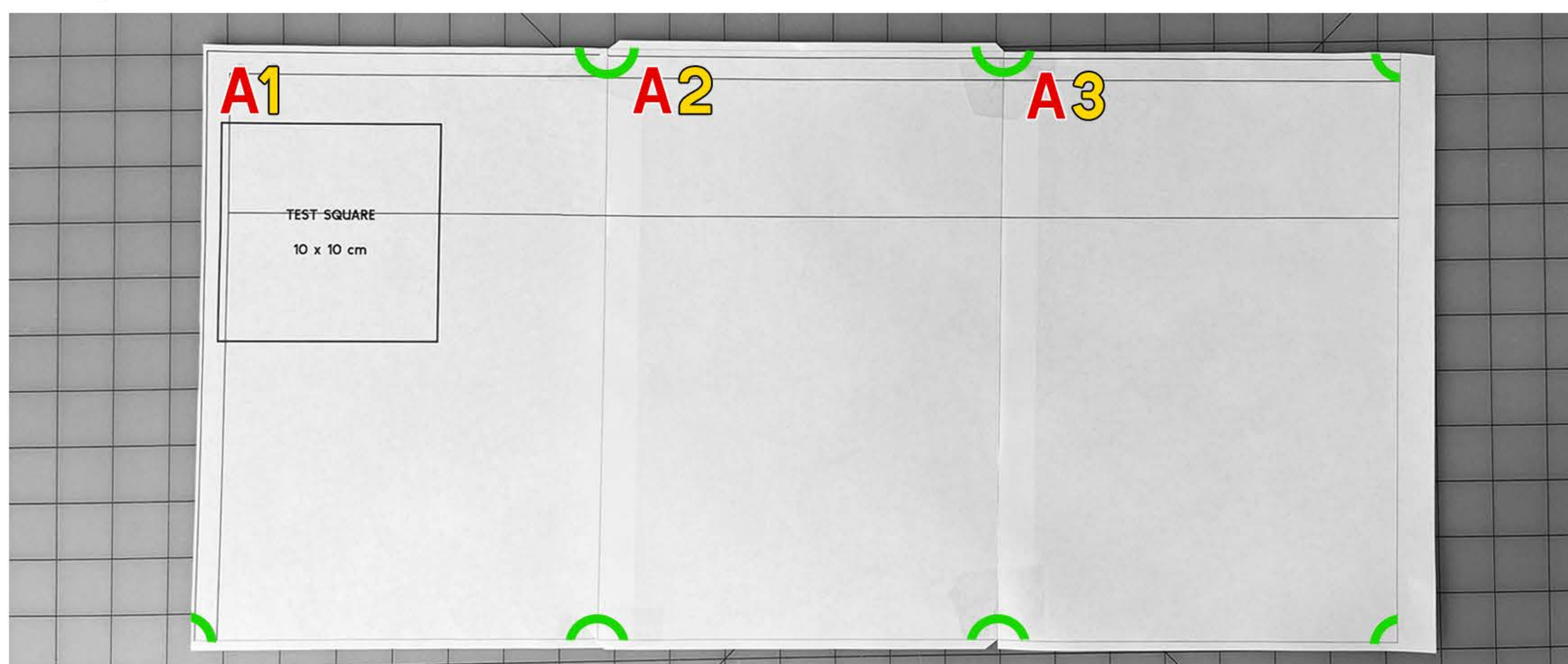


1. Cut off the margins of the paper according to the frame surrounding the pattern.

Please see the video on the Dressmaking Amore YouTube channel for better viewing.



2. Tape together matching the circles at the corners, following the order of the pages using the rows and columns.



LAVENDER DRESS

PATTERN PIECES

CHECK MEASUREMENTS

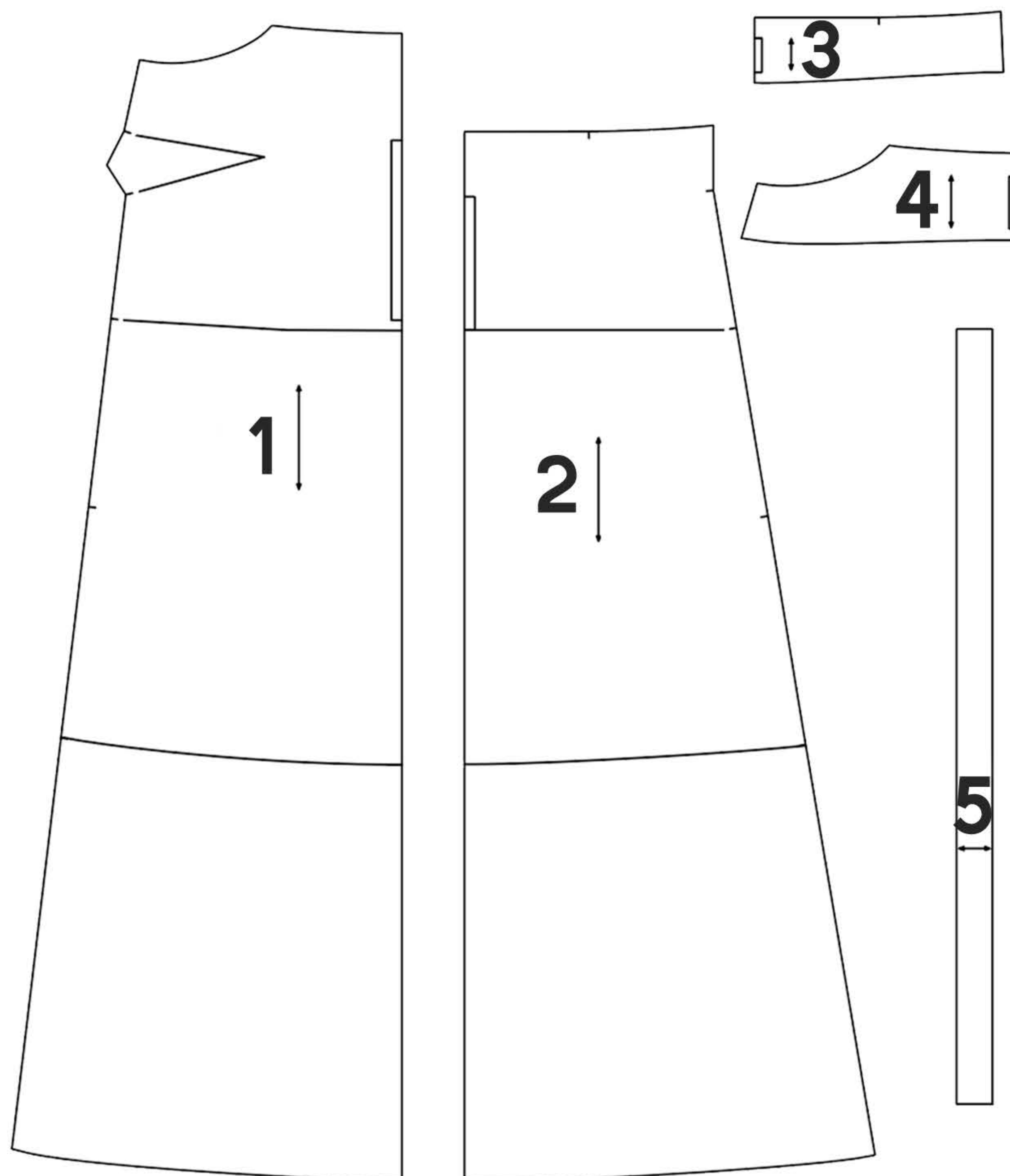
It is important to review and adjust the pattern to your personal measurements to include the needed ease in order to achieve the desired design silhouette and a perfect fit.

1. We need these measurements: 1) **BUST**, 2) **WAIST**, 3) **HIPS**

2. Measure your pattern at these control lines and compare with your measurements. **Don't take seam allowances into account as they are included in the pattern.**

3. For adjustments, you can print the 2 sizes that are closest to your measurements, and then blend the pattern lines in between.

EX. If your Bust is a size 4, and your Hips are a size 8, print these two sizes on the same sheets of paper and then blend the bodice size 4 with the hip size 8, re-drawing new side lines, for the Front and Back pieces.



PIECES:

- 1. FRONT
- 2. BACK
- 3. BACK NECKLINE FACING
- 4. FRONT NECKLINE FACING
- 5. STRAP

PATTERN SYMBOLS KEY:

- ≡ Mark: Center Back
- = Mark: Back Armhole
- Mark: All others
- ⌋ Cut on Fold
- ↕ Grainline
- ◊ Dart
- ⌋ Pleat
- S Side

LAVENDER DRESS

CUTTING INSTRUCTIONS

CUTTING INSTRUCTIONS

1. Choose the right layout for your fabric. The pattern layout on the fabric depends on the length of your chosen design, the width of your fabric and whether or not it has a print. Fold the fabric and lay out your pattern as shown in the technical illustrations on page 9, pinning or using weights to hold the fabric down, and cut.

2. Cut Main Fabric:

- 1. **FRONT:** Cut 1 SELF on FOLD
- 2. **BACK:** Cut 1 SELF on FOLD
- 3. **BACK NECKLINE FACING:** Cut 1 SELF on FOLD
- 4. **FRONT NECKLINE FACING:** Cut 1 SELF on FOLD
- 5. **STRAPS:** Cut 4

3. Cut Interfacing:

- 3. **BACK NECKLINE FACING:** Cut 1 on FOLD
- 4. **FRONT NECKLINE FACING:** Cut 1 on FOLD

***Make sure to mark control points/notches.**

SEAM ALLOWANCES: Are included.

All seams: 1.3 cm (1/2")

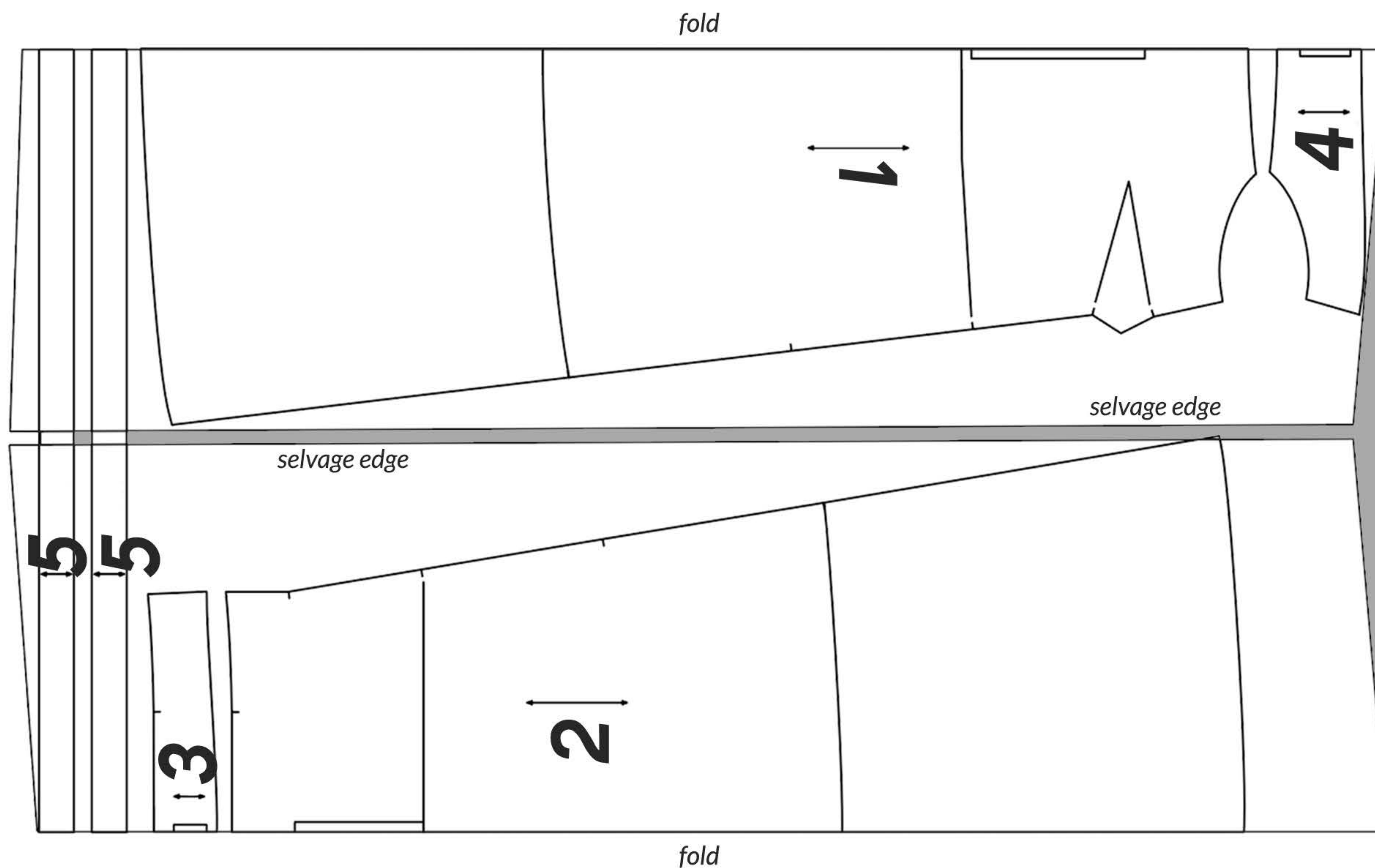
***SELF** is a technical name for your main fabric.

LAVENDER DRESS FABRIC LAYOUT

EX. Fabric folded right sides together lengthwise from both edges.


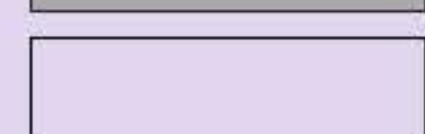
FRONT and BACK placed on fold.

1-1.75 m (1-1 ⁷/₈ yds) Fabric width: 150 cm/60"



IMPORTANT:

Look for the **grainline** (shown with arrows on the pattern) to be parallel to the selvage edge of the fabric. This prevents the fabric from skewing.

 **RIGHT** side of fabric
 **WRONG** side of fabric

***Make sure to mark control points/notches.**

IMPORTANT: The fabric layout graphs are only suggestions, please carefully consider and orient yourself based on the width of your chosen fabric and the size of your pattern.

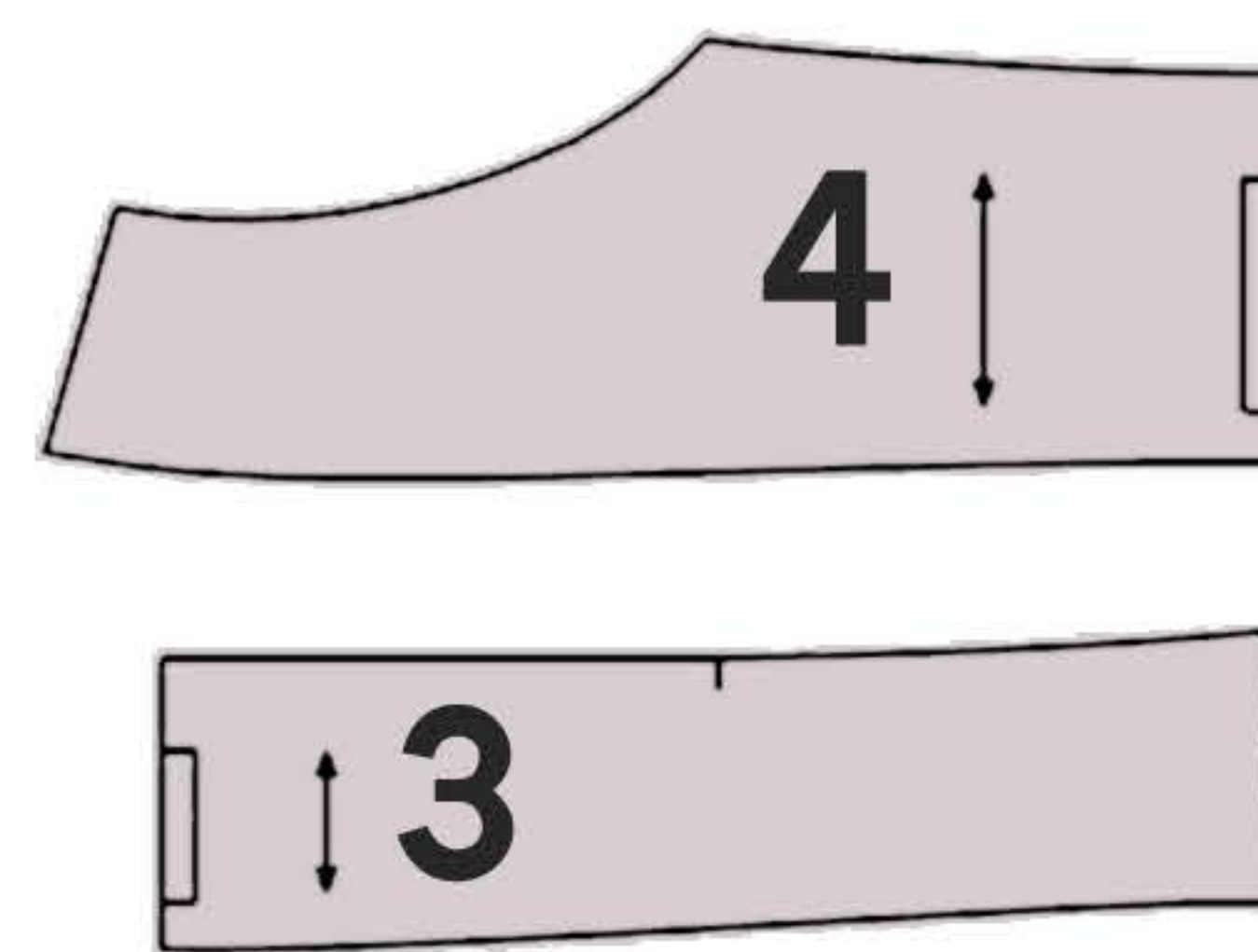
LAVENDER DRESS

INTERFACING INSTRUCTIONS

INTERFACE THESE PATTERN PIECES

Interfacing these pattern pieces will give extra stabilization and weight and to the fabric, supporting the desired shape of our garment.

- 3. BACK NECKLINE FACING: Cut 1 on FOLD
- 4. FRONT NECKLINE FACING: Cut 1 on FOLD



 SELF (main fabric)
 INTERFACING to cut

*Make sure to mark control points/notches.

LAVENDER DRESS | SEWING STEPS 1 - 6

Please watch the Lavender dress sewing tutorial on the Dressmaking Amore YouTube channel for better viewing and understanding of instructions.

DARTS



1
Transfer the darts to the other side of the fabric and then pin the darts.

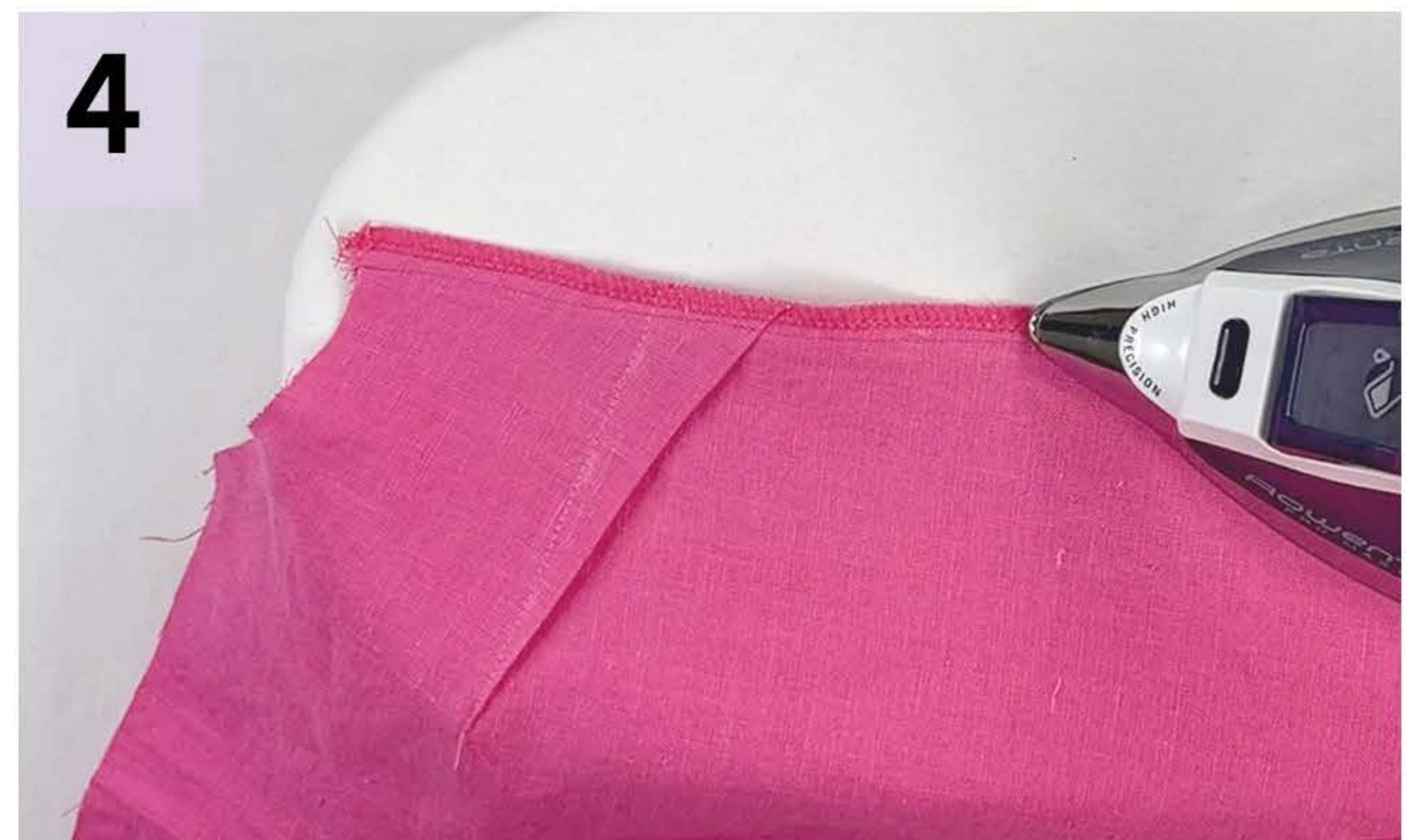


2
Sew the darts and press them.

SIDE SEAMS

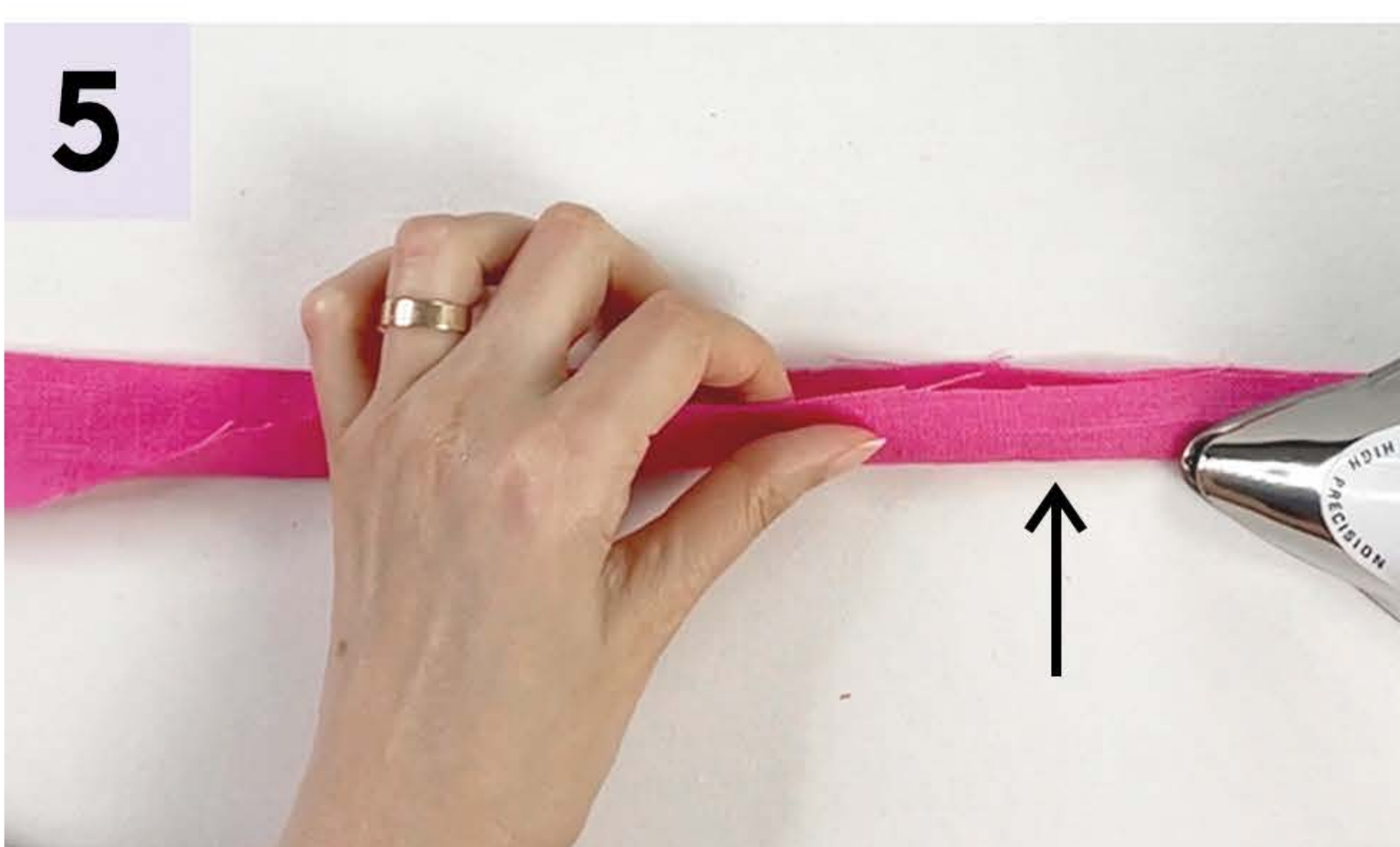


3
Place the Front and Back pieces right sides together and pin the side seams.

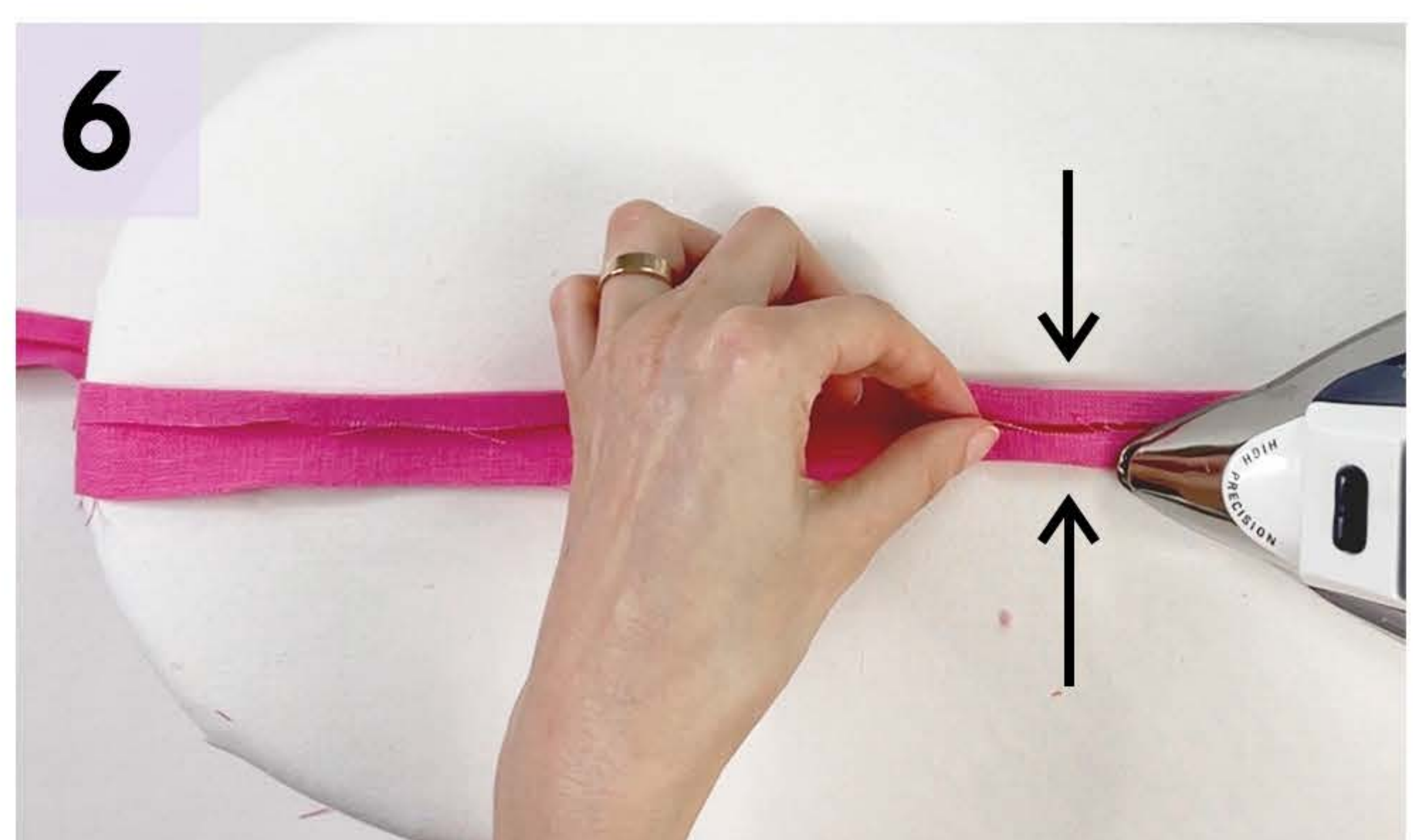


4
Sew, then press the side seams.

STRAPS



5
Fold the straps in half wrong sides together and press.



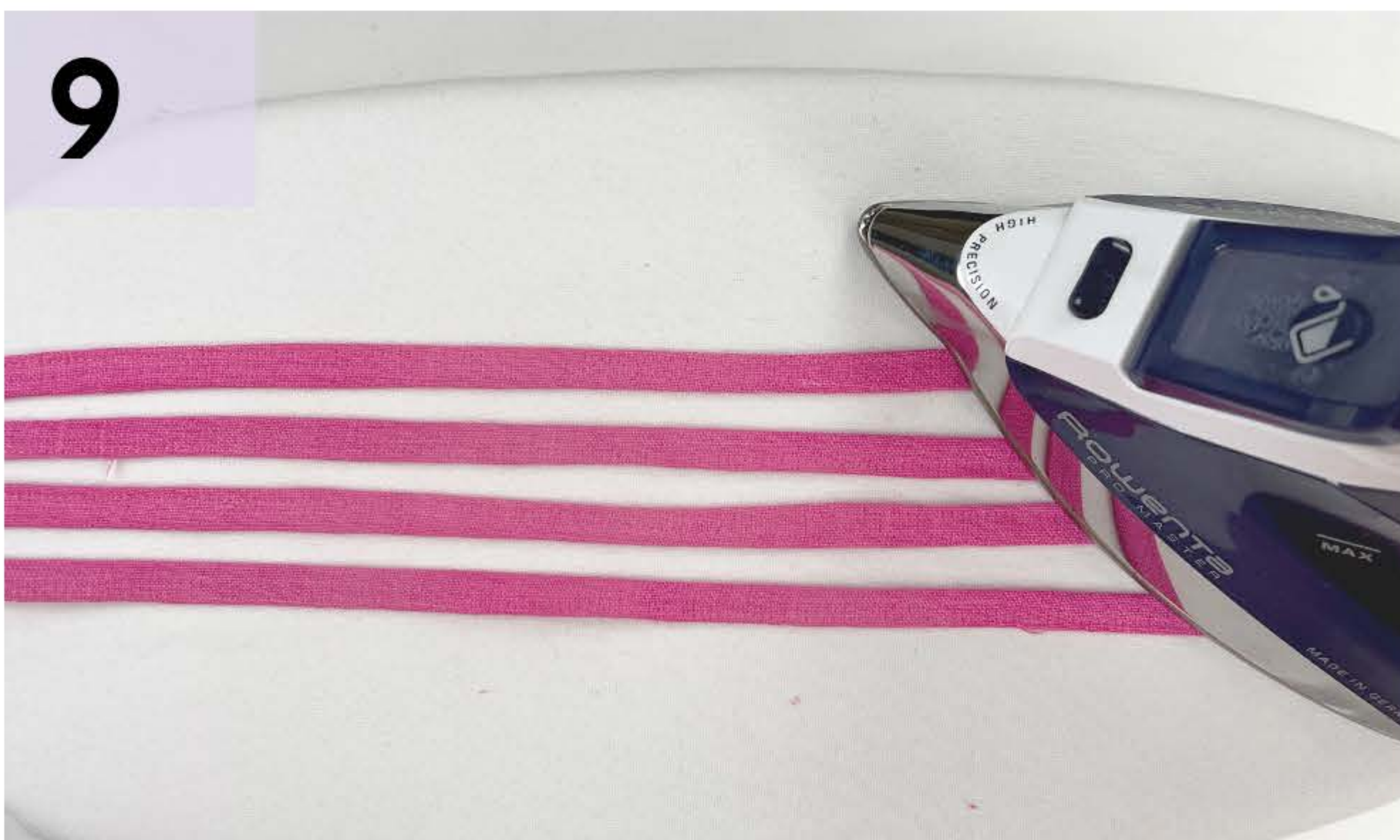
6
Then fold each raw edge of the strap towards the center crease and press again. Or, you can use a bias-making tool if you have it in the right size.



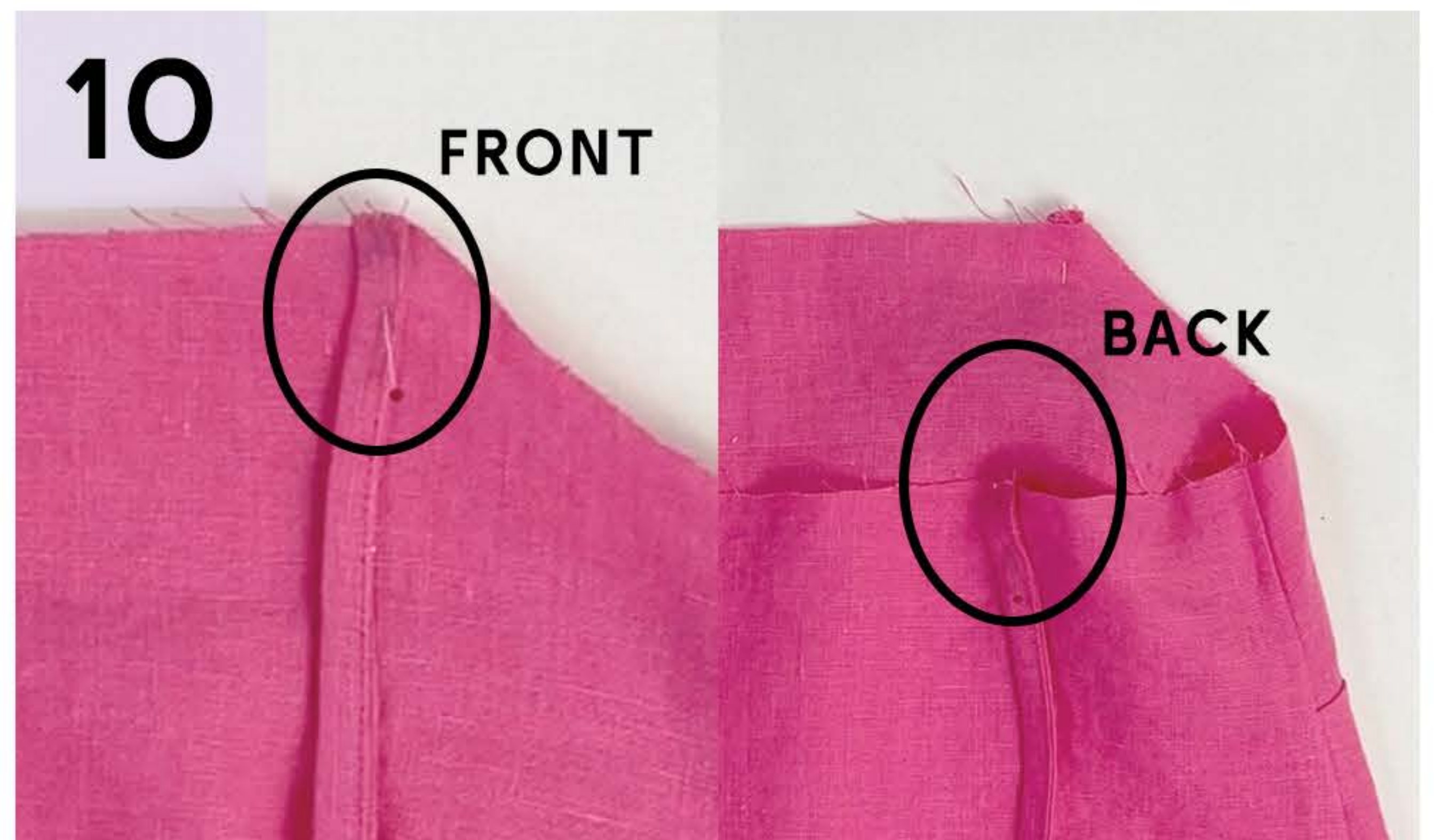
Now you can pin the folded edges together hiding the raw edges inside, or you can hand-baste them together, choose what you prefer. I simply pressed them again.



Topstitch the strap 1-2 mm (1/8") from the edge.

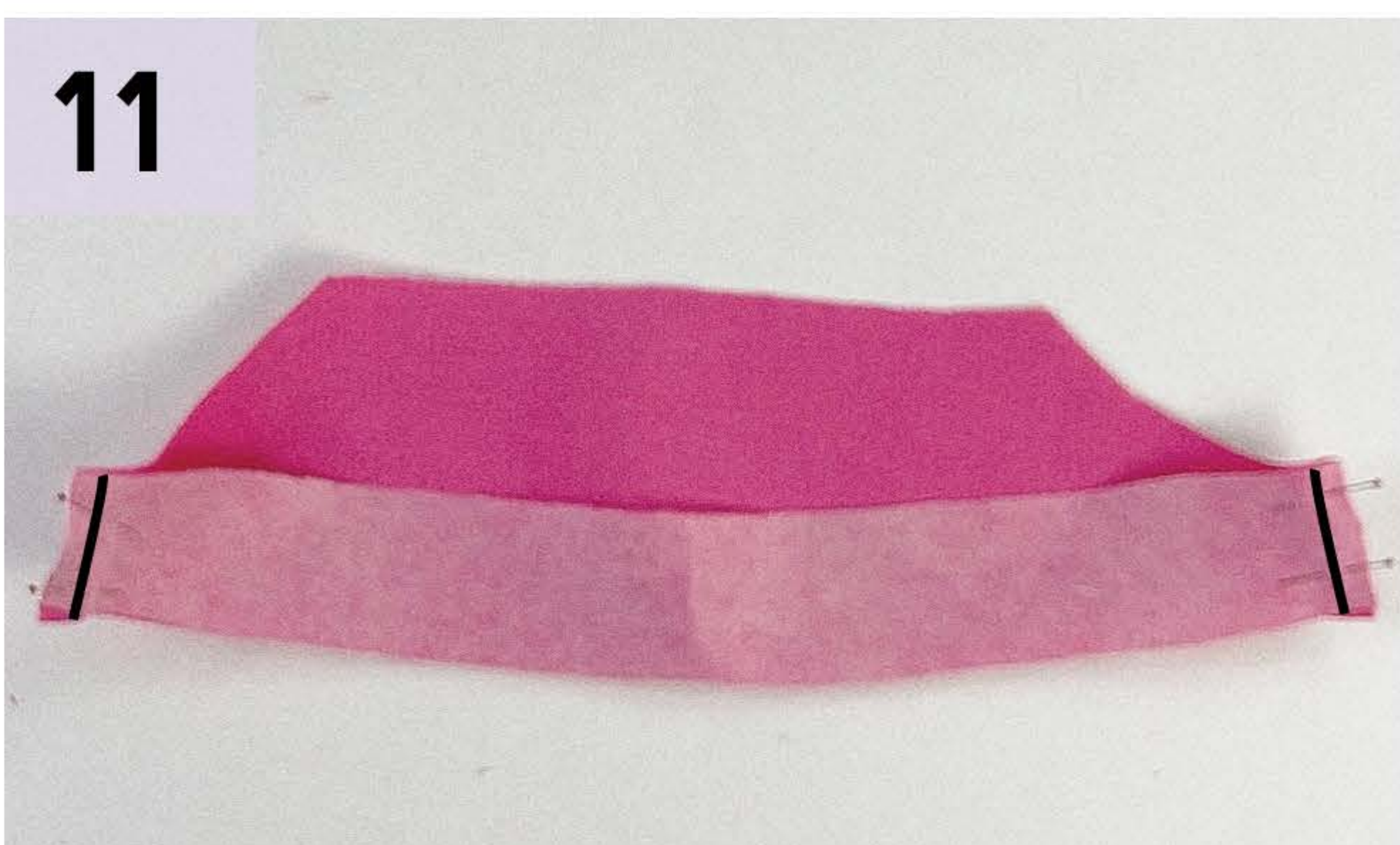


Press the straps.



Pin the Front straps to the Front corners, and the Back straps to the Back at the marks.

NECKLINE FACING



Sew the side seams of the Neckline Facing.



Press the ends and serge the bottom edge of the facing.



13 Pin the Facing to the neckline right sides together matching the side seams and the marks at the Back, and sew.



14 Trim the neckline seam, leaving 5 mm (1/4").



15 Clip the seam allowances at the armhole curve.



16 Turn the Facing to the right side, with the seam allowances towards the Facing and understitch the Facing 1-2 mm (1/8") from the edge, stopping before the corners and continuing after the corner.



17 Turn the Facing to the wrong side and press the neckline edge.



18 Secure the Facing at the side seams.

HEM

19



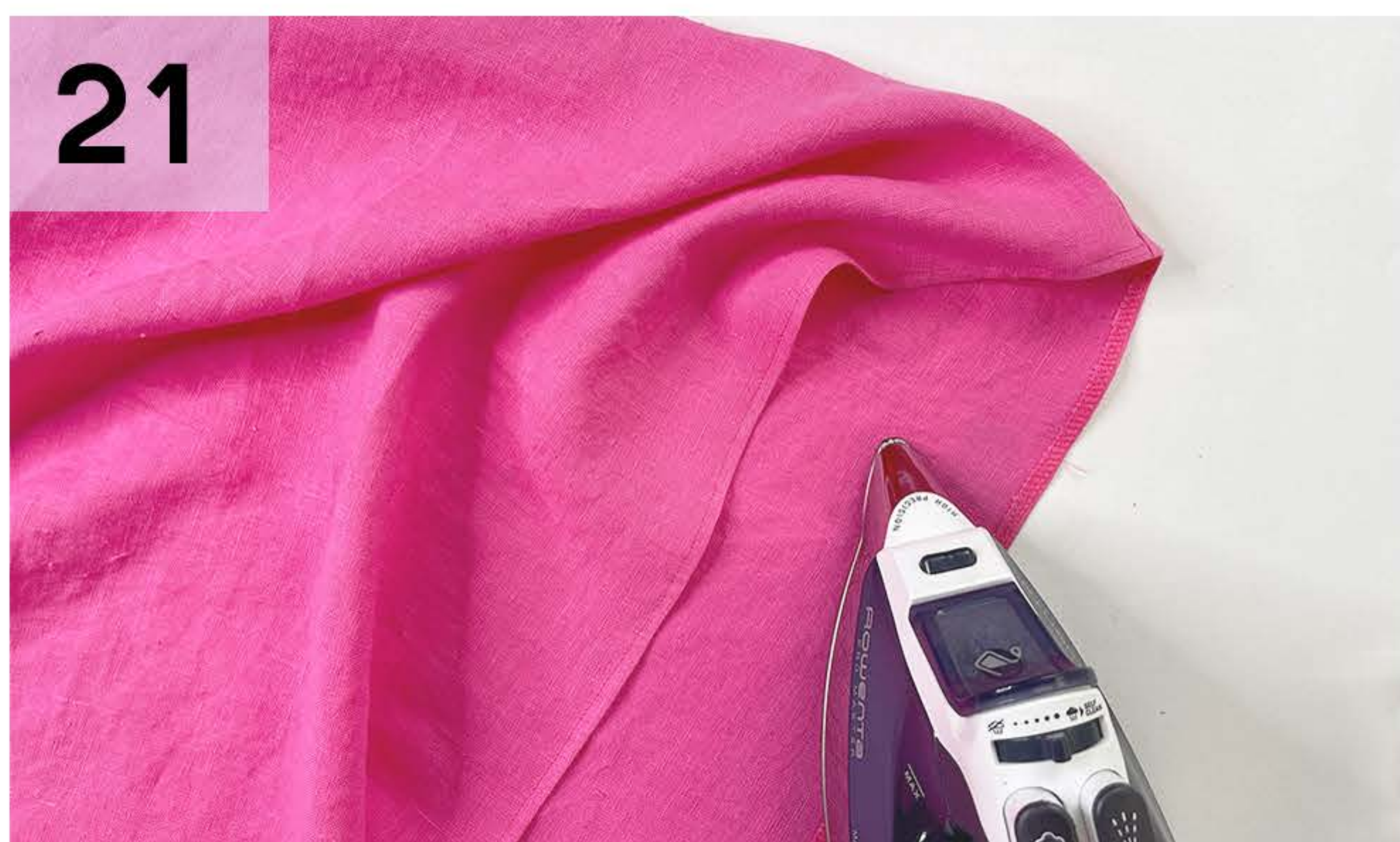
Serge the hemline.

20



Fold the serged edge to the wrong side and topstitch.

21



Give the dress a final press.

22

Try the dress on and play with the different options of tying the straps: you can tie them at the Front along the edge of the neckline, at the very Back, or right at the top of your shoulders.

TIP:

All your seams should be pressed and cooled in the process. Pressing and cooling the fabric with a wooden tailor's clapper takes away any heat & moisture, allowing the stitches to hold the fabric better. It gets rid of any waviness your fabric may have, leading to smoother seams, and it makes sure that the fabric has the right shape.

LAVENDER DRESS
TA DAA!



YAY! We are finished with our pretty Lavender dress! Show off your beautiful work with photos on Instagram, and tag me at **@dressmakingamore** using our official hashtag **#dapatterns** - I would absolutely looove to see your work!

Happy sewing,

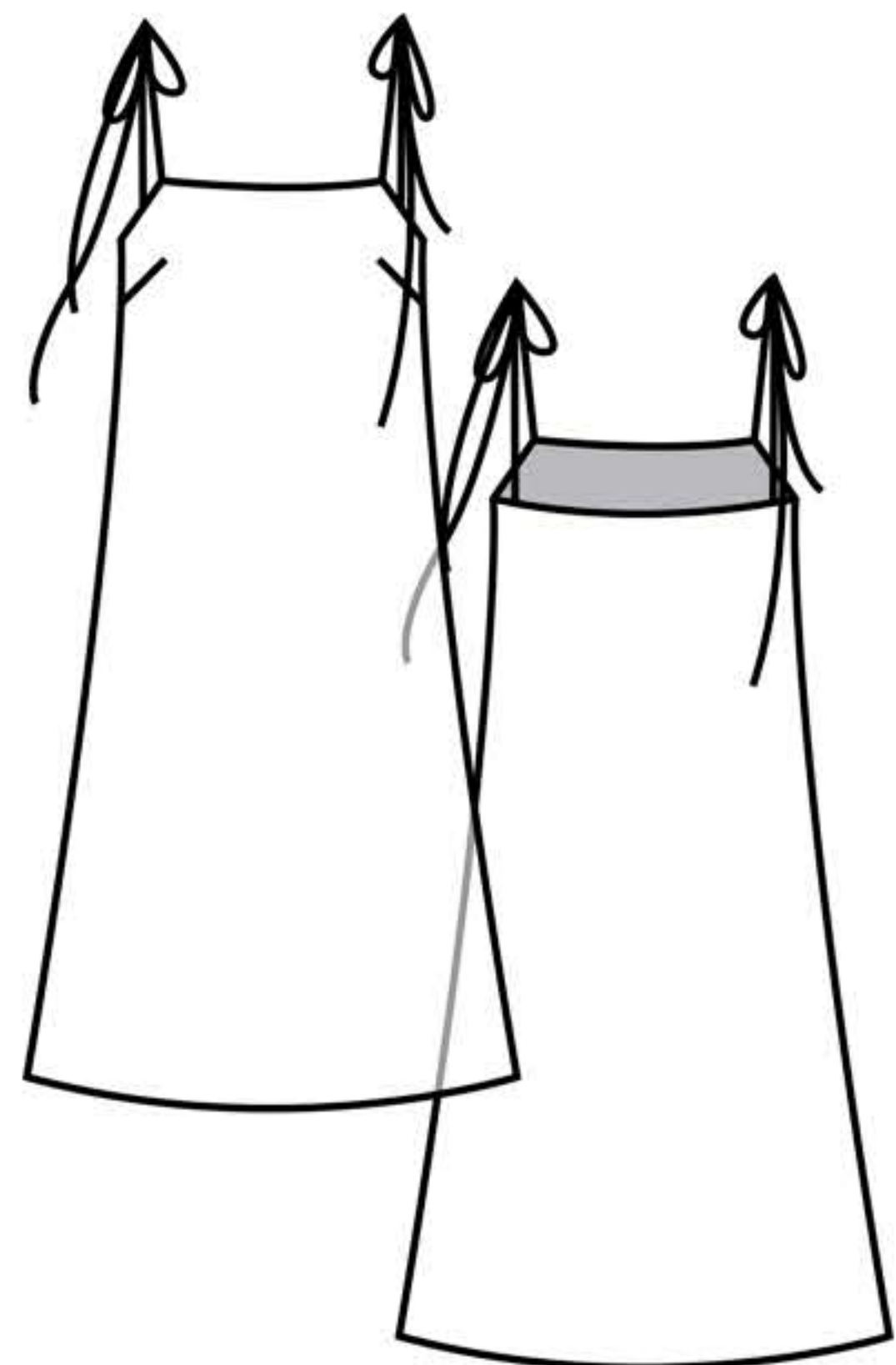
xx Tiana

CONTACT ME AT: contact@dressmakingamore.com

    Dressmaking Amóre

LAVENDER DRESS

OVERVIEW CHECKLIST



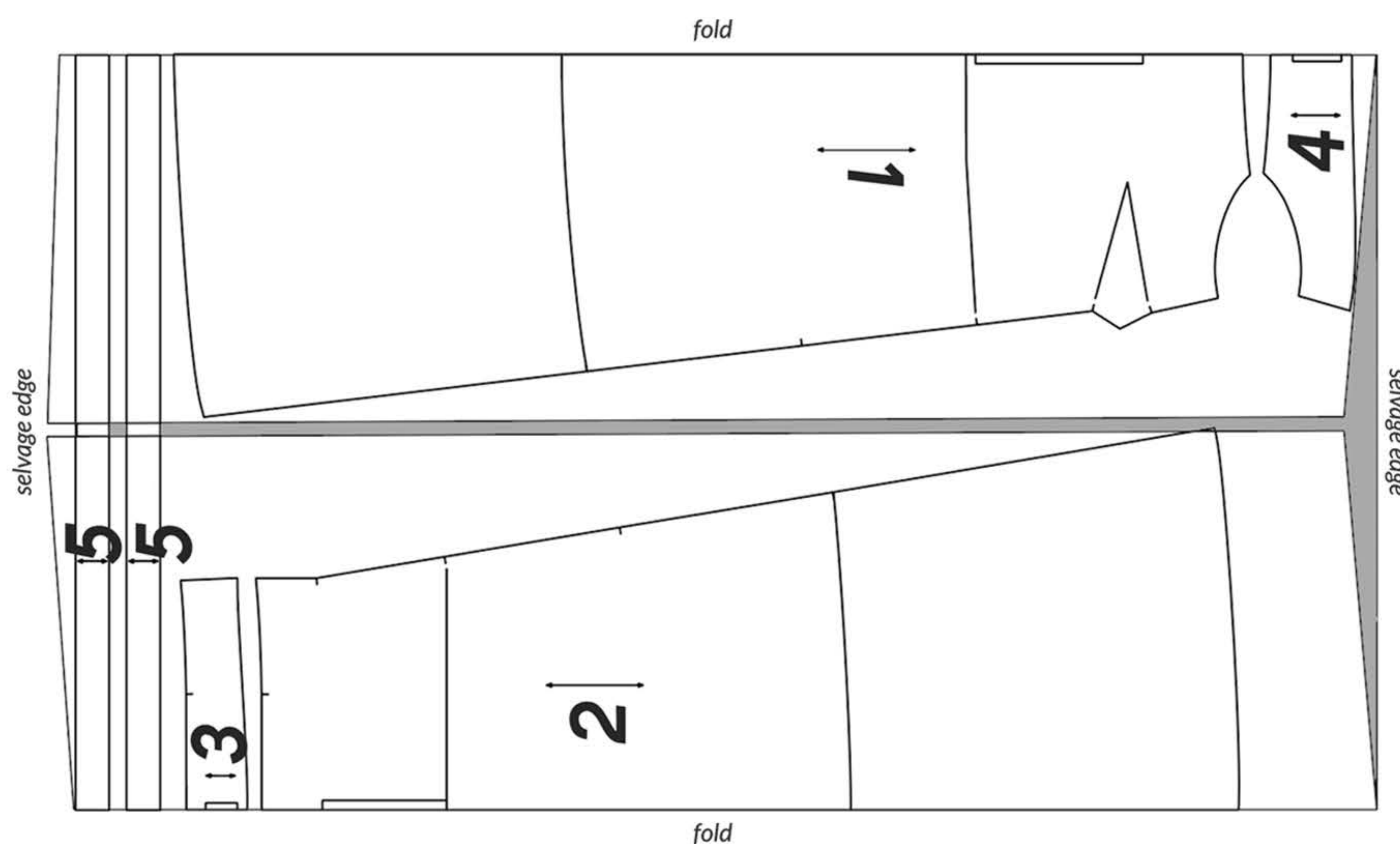
DESCRIPTION

- Straight A-line silhouette
- Relaxed fit
- Tie straps
- Straight neckline
- Unlined
- Mini 60 cm length
- Midi 99 cm length

MATERIALS & TOOLS

- 1-1.75 m (1-1^{7/8} yds) light-mid weight woven fabric
- .3 m (1/3 yds) interfacing
- Matching thread
- Glasshead pins
- Scissors

- 1. PREP FABRIC
- 2. PREP PATTERN
- 3. CUT PIECES (Fabric folded right sides together lengthwise from both edges.)



EX. 1-1.75 m (1-1^{7/8} yds)
Fabric width: 150 cm/60"

 **RIGHT** side of fabric
 **WRONG** side of fabric

***Make sure to mark control points/notches.**

- 4. SEW
 - 1. Sew the Darts.
 - 2. Sew the Side Seams.
 - 3. Prep the Straps.
 - 4. Sew the Neckline Facing.
 - 5. Hem the dress.
 - 6. Give it a final press, take a beautiful photo and enjoy!

BONUS: Share your beautiful creation with us on Instagram- we would absolutely love to see & share your work! Tag us at **@Dressmakingmore** and use the hashtag **#dapatterns**