

Lara lounge wear set pattern

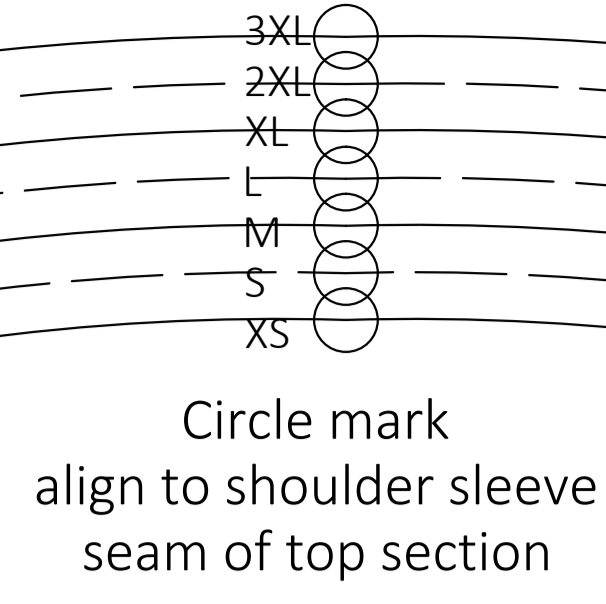
Size women XS to 3XL



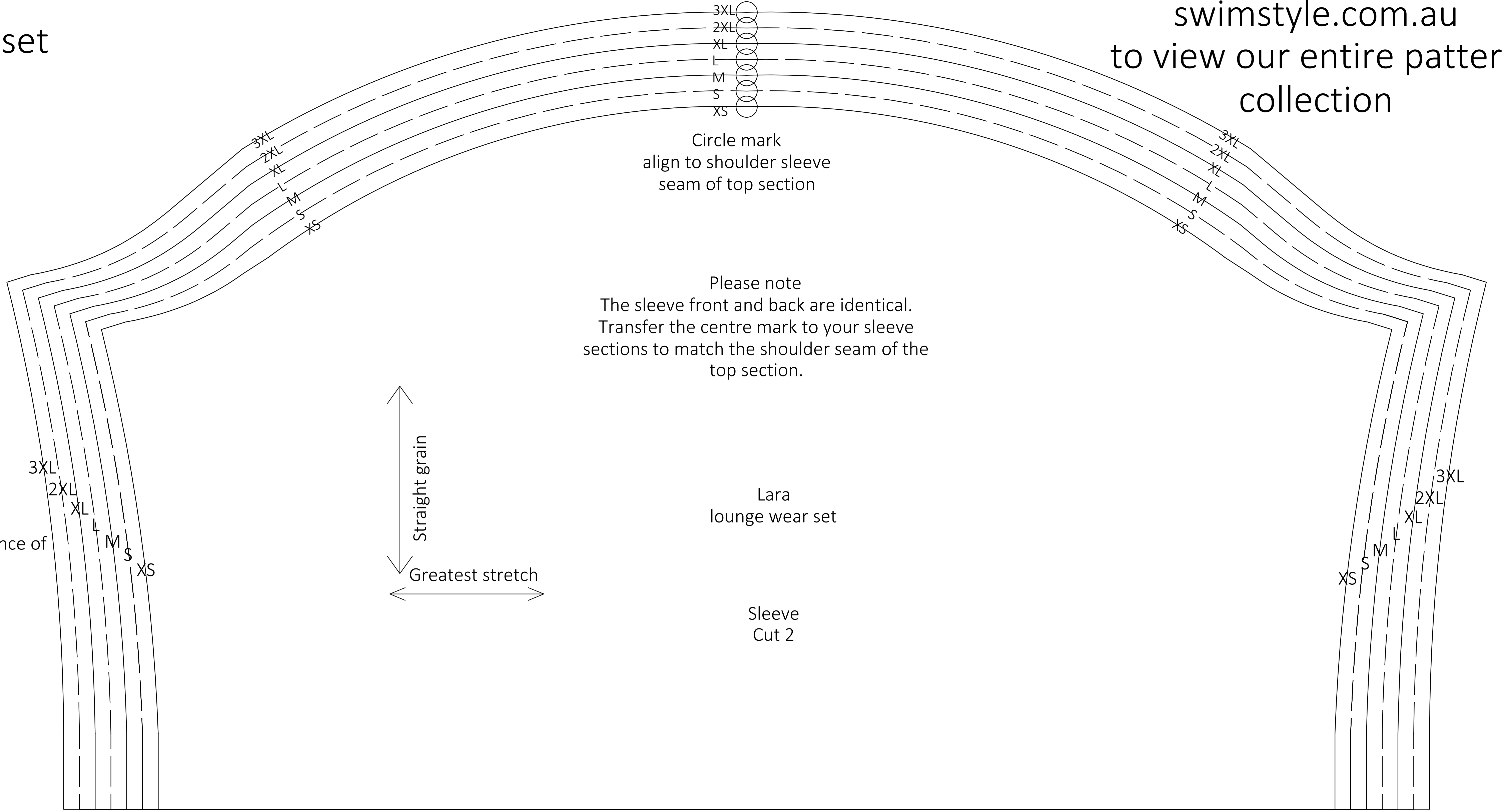
Visit our You tube channel Swim Style patterns to view a video tutorial on this pattern.

This pattern is designed for knit/ stretch fabrics. This pattern includes a seam allowance of 1cm or $\frac{3}{8}$ of an inch

Lara lounge wear pattern 2 of 2 files Top section Copy shop file no 2 paper size A0 1189mm x 841mm



Please note The sleeve front and back are identical. Transfer the centre mark to your sleeve sections to match the shoulder seam of the top section.



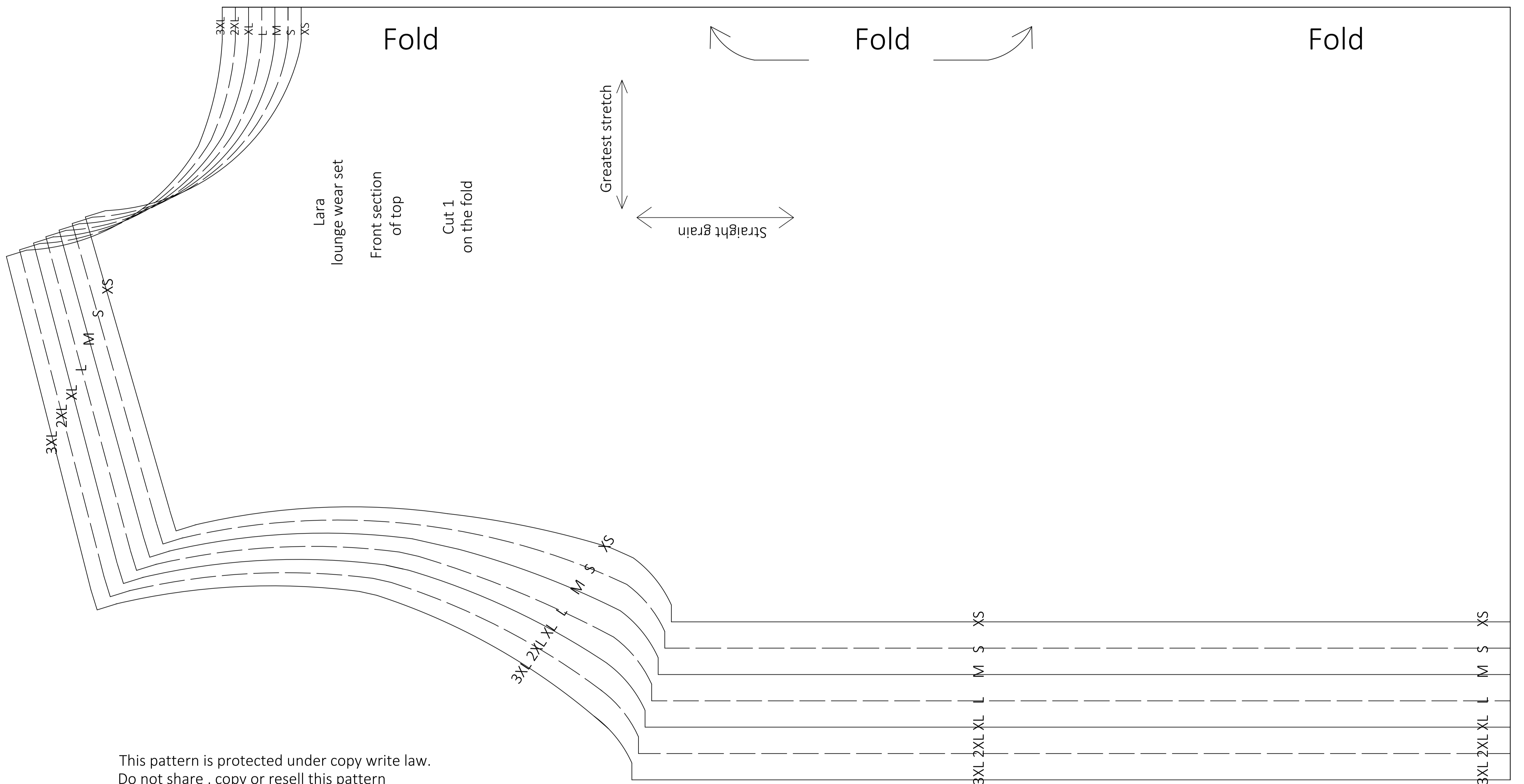
Fold

Fold

Fold

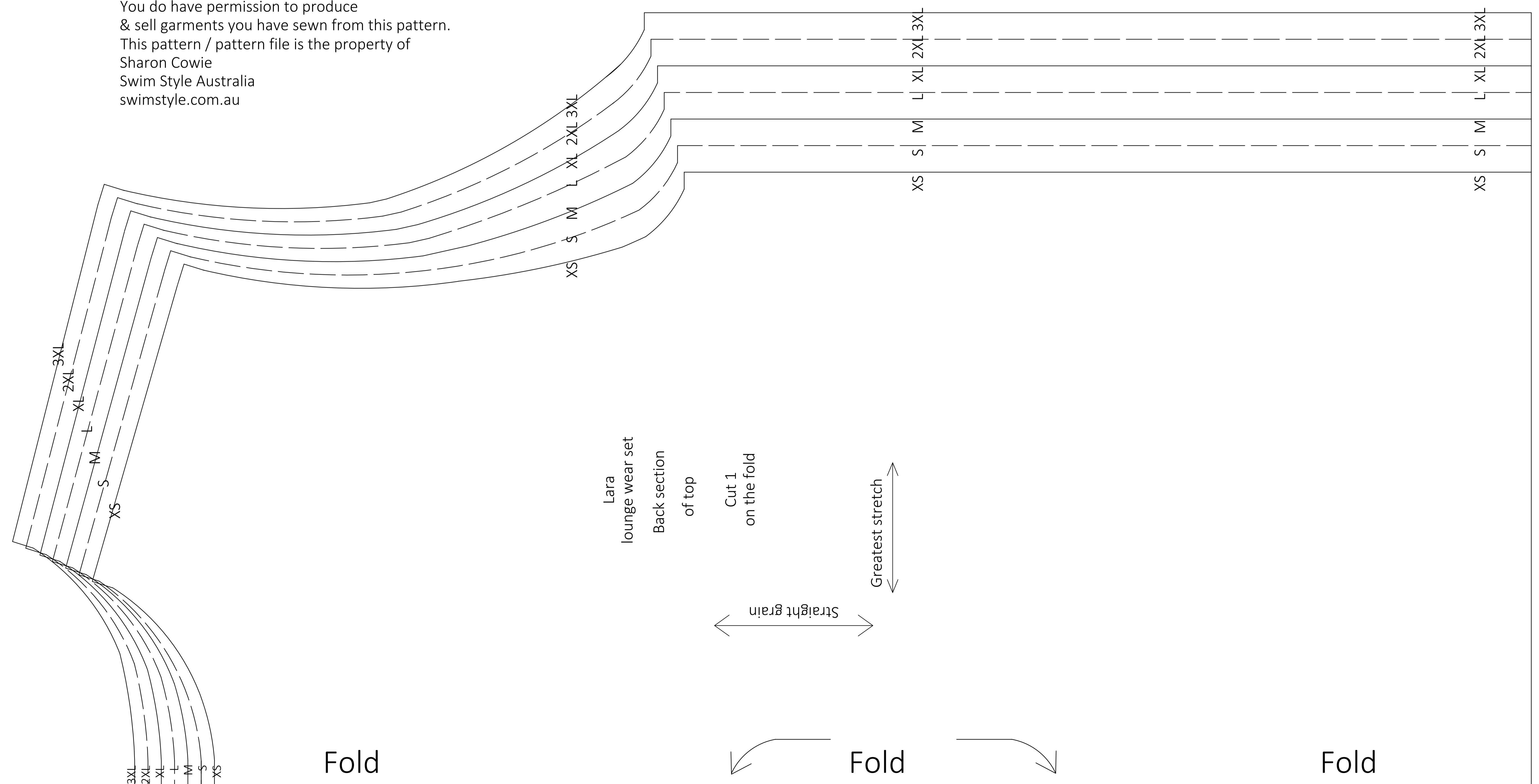
Lara lounge wear set Neck band Cut 1 top section

Lara lounge wear set Front section of top Cut 1 on the fold



This pattern is protected under copy write law. Do not share, copy or resell this pattern in any form, file or paper. You do have permission to produce & sell garments you have sewn from this pattern. This pattern / pattern file is the property of Sharon Cowie Swim Style Australia swimstyle.com.au

Lara lounge wear set Back section of top Cut 1 on the fold



Fold

Fold

Fold