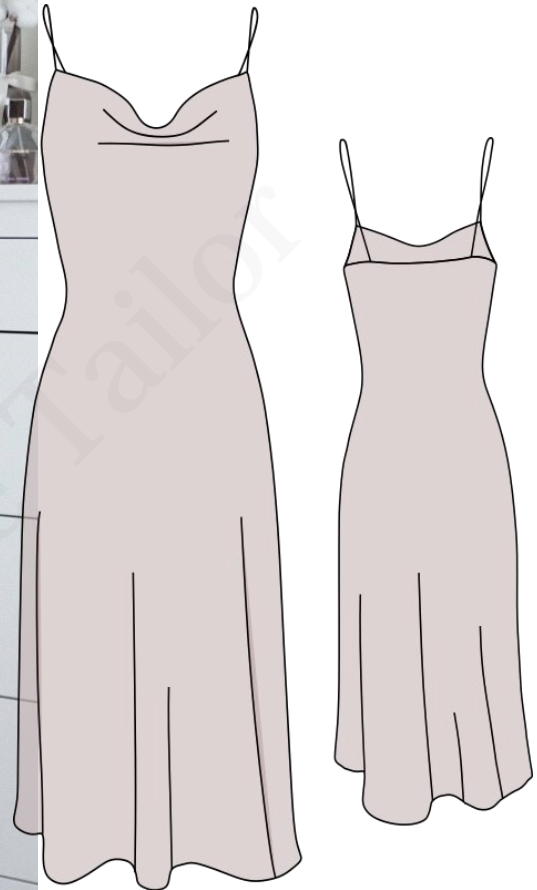


KRISTY

dress pattern



Sizes: XS-XL
Complexity: Beginner

Pattern usage

- Pattern created for personal use. Do not distribute AnnaTheTailor patterns to third parties as well as not allowed to share patterns on social media or elsewhere on Internet.
- Patterns can be used for commercial purposes only when creating clothing collections and with condition that the patterns are used only in production without further distribution to individuals.
- Clothes made with AnnaTheTailor patterns can be sold as long as you do not distribute pattern itself. Illegal use or distribution will be prosecuted in accordance with the law regarding the intellectual property.

Pattern printing instructions

There is two options how pattern can be printed:

Using a standard A4 printer or printing on a plotter in a printing shop.

Standard A4 printer:

To print a pattern, you need to download and open it through a program for working with PDF files such as Acrobat Reader. Do not try to open a document through an Internet browser, you need to download it to the computer and then print, otherwise you will receive a pattern with distorted details.

For an accurate printout it's important to set the correct parameters in the print settings:

- A4 paper size
- Scale 100%
- Real size

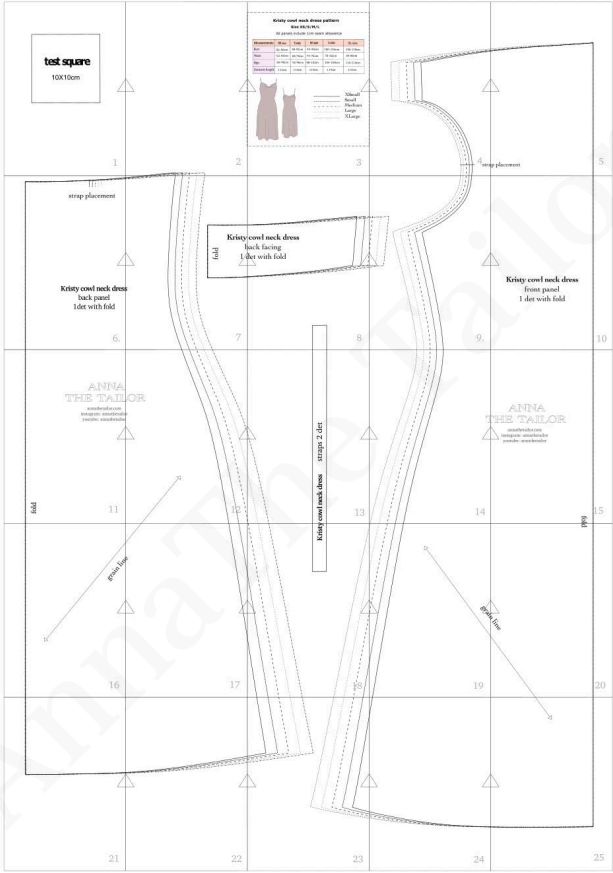
After set the print settings, print only the first sheet containing the test square which measures 10x10 cm just to check that the test square size is correct. If the size of the test square does not match the required designation (10X10) check your parameters once again:

- A4 paper size
- Scale 100%
- Real size

If the test square matches the size, then you can start printing the rest of the pages.

Allow pages to print and do not mix them up. After its all printed begin by pasting the pages. Each sheet has a count number and a triangular icon which is a reference when sticking pages. Also follow the borders, cut excess from each sheet at the right side and bottom so it will be easier to lay pages on top of each other.

Use the layout below as a guide when pasting your individual pages together.



Full size printing. Another printing option is to print the pattern on a large printer (plotter) in a printing shop. Printing on a plotter makes it possible to get details placed on one big sheet and there is no need to stick A4 sheets. After printing pattern in a printing shop make sure that the test square measures (10x10) just to make sure that the printing is correct.

About Kristy dress

Flowy and elegant dress style. Dress cut on the bias which gives it a very chic and elegant silhouette. Thin straps attached to the cowl neck. Side seam finished with french seam. Neckline finished with continuous facing at the front and facing at the back. Hem is double turned.

Fabric preparation

Since most materials shrink during wet heat treatment and subsequent washing, the main material and lining must be decatized or pre washed. Just simply steam the fabric with hot iron or use a washing machine to wash the fabric before sewing.

Which fabric to use and how much:

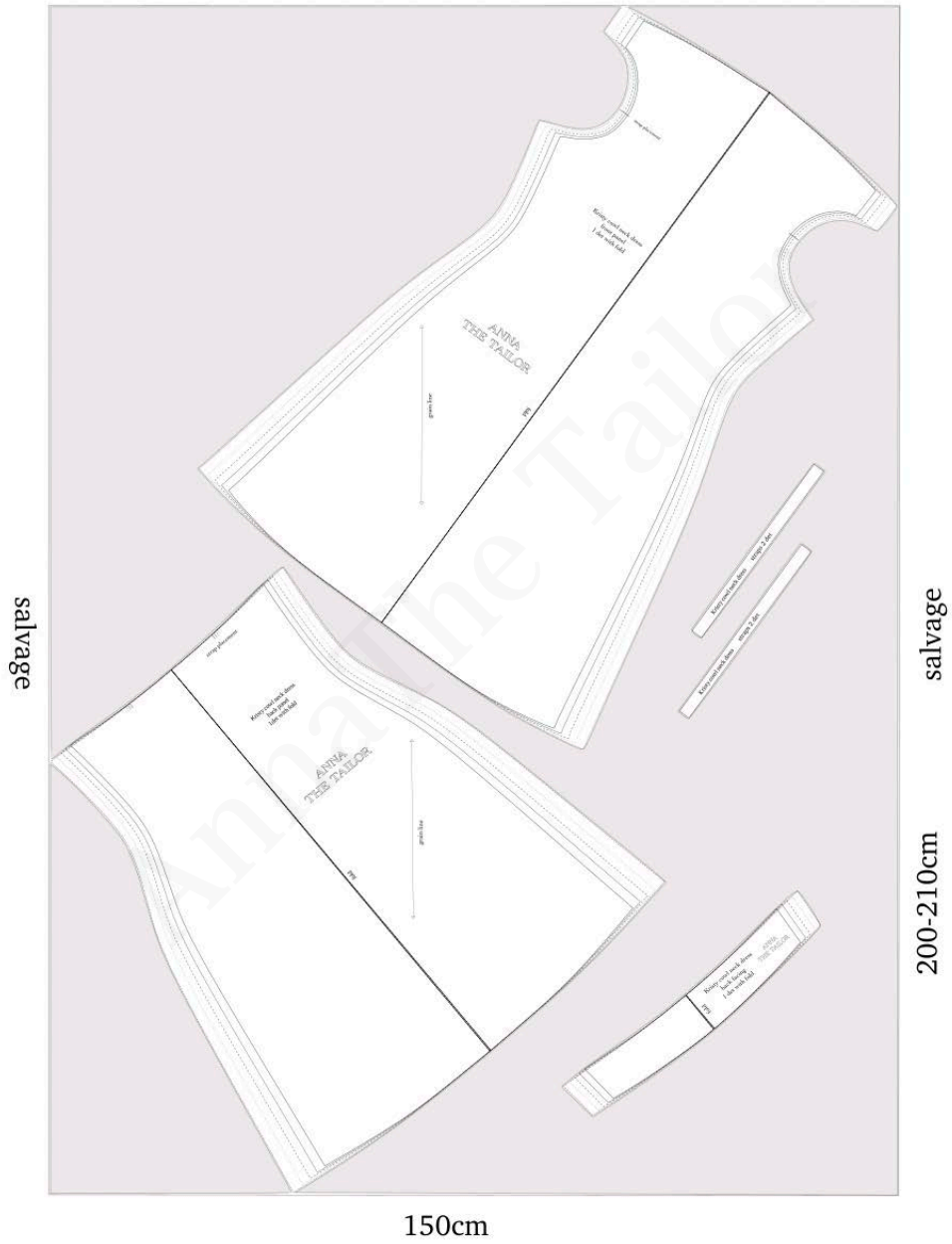
- For this style silk or satin fabric is most suited
- Use 200-210 cm of fabric regards a 150cm wideness



Equipment and materials needed for this project:

- Sewing machine
- Fabric
- Threads same colour as fabric
- Scissors
- Pins
- Chalk

Use the image below as a guide when cutting out the details



Let's get started stitching the Kristy dress



Place front and back details on top of each other face side up.
Pin and stitch side seams.



Trim half of the seam



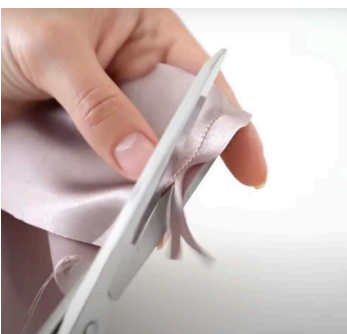
Iron side seams



Stitch side seams again so that the seam allowance is inside



Pin back facing to the front panel facing and stitch side seams



Trim half of the seam



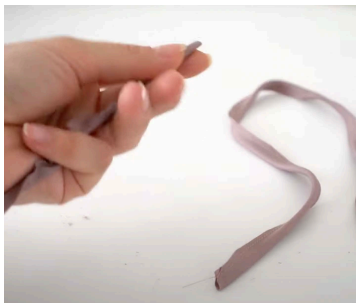
Pin and stitch again so that the seam is inside



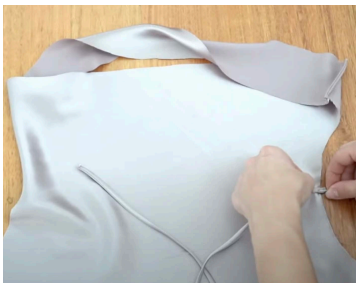
Fold straps and stitch



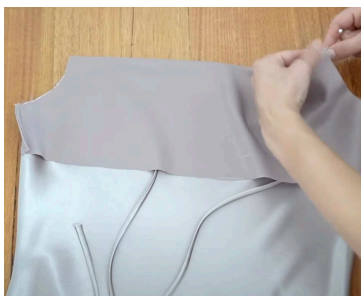
Trim half of the seam



Turn out the straps using loop turner or safety pin.



Iron straps and then pin them to the front panel notches (see pattern marks)



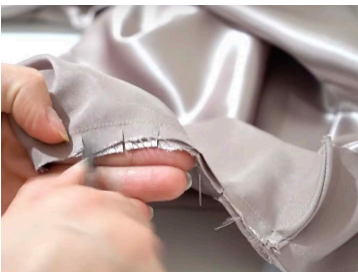
Cover them with the front facing



Pin other ends of the straps to the back notches



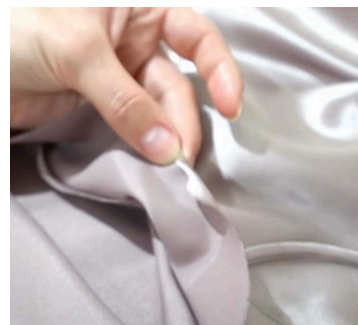
Cover with back facing and stitch



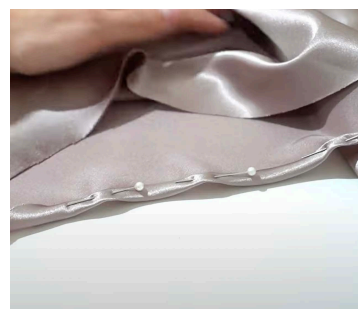
Snip all over the curve armhole line to help seam to adjust to the armhole.



Turn seam to the facing side and make an under stitch



Double turn the facing bottom seam and stitch.



Double turn the hem and stitch.

And here is the finished result!



For convenience follow the video instructions on YouTube channel:

Anna The Tailor

Use this link to find a video or simply visit a channel mentioned before.

<https://www.youtube.com/watch?v=kTgDygTZOuM>