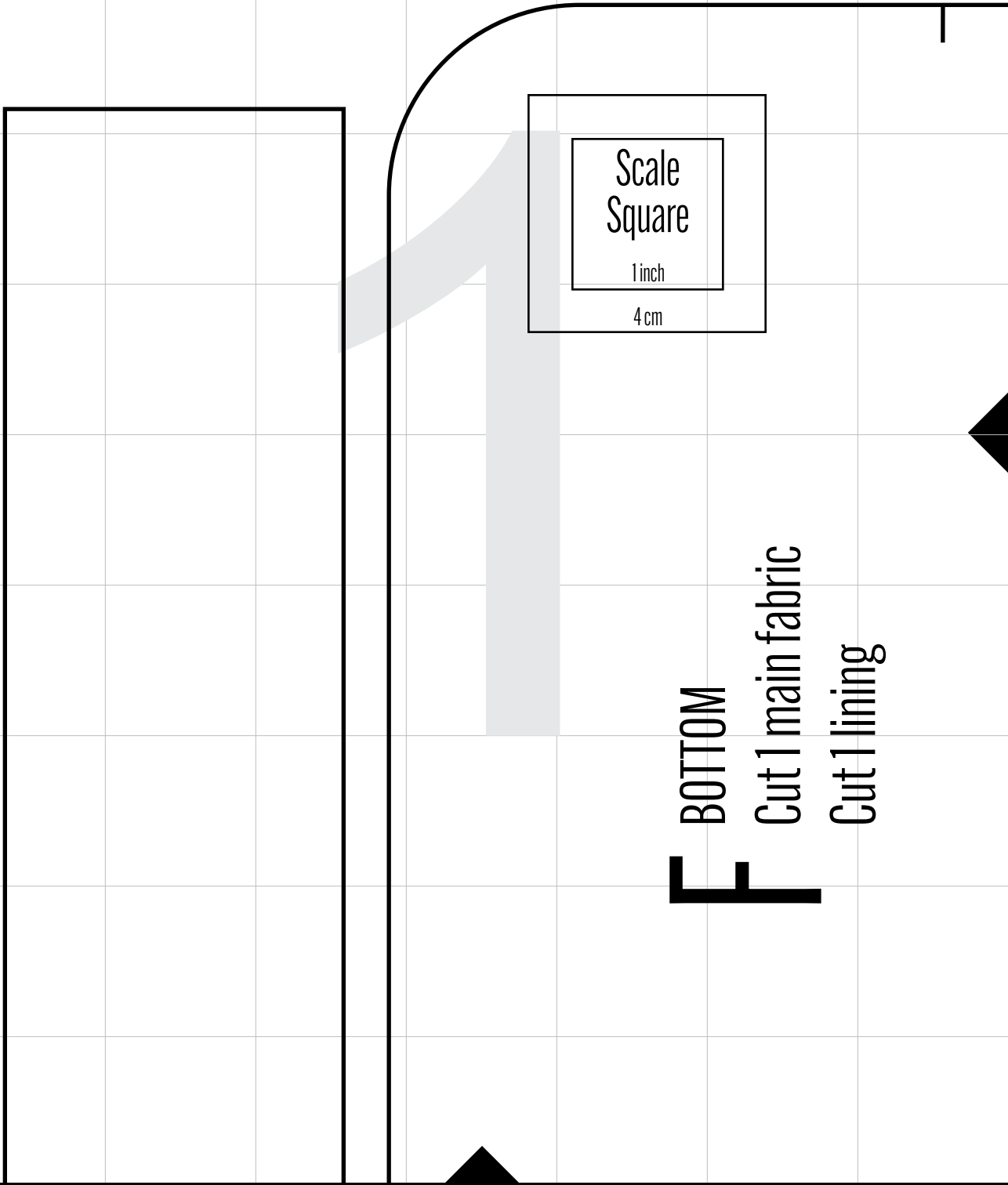


# THE SATURN SLING BAG

This pattern is designed to be printed at home on either Letter (8.5" x 11") or A4 (8.3" x 11.7") paper. In your printer settings, make sure you choose "actual size" or print with 100% scale (do not select "fit to paper"). Print page 1 before printing the other pages and make sure that the scale square measures 4 cm (outer square) or 1 inch (inner square).

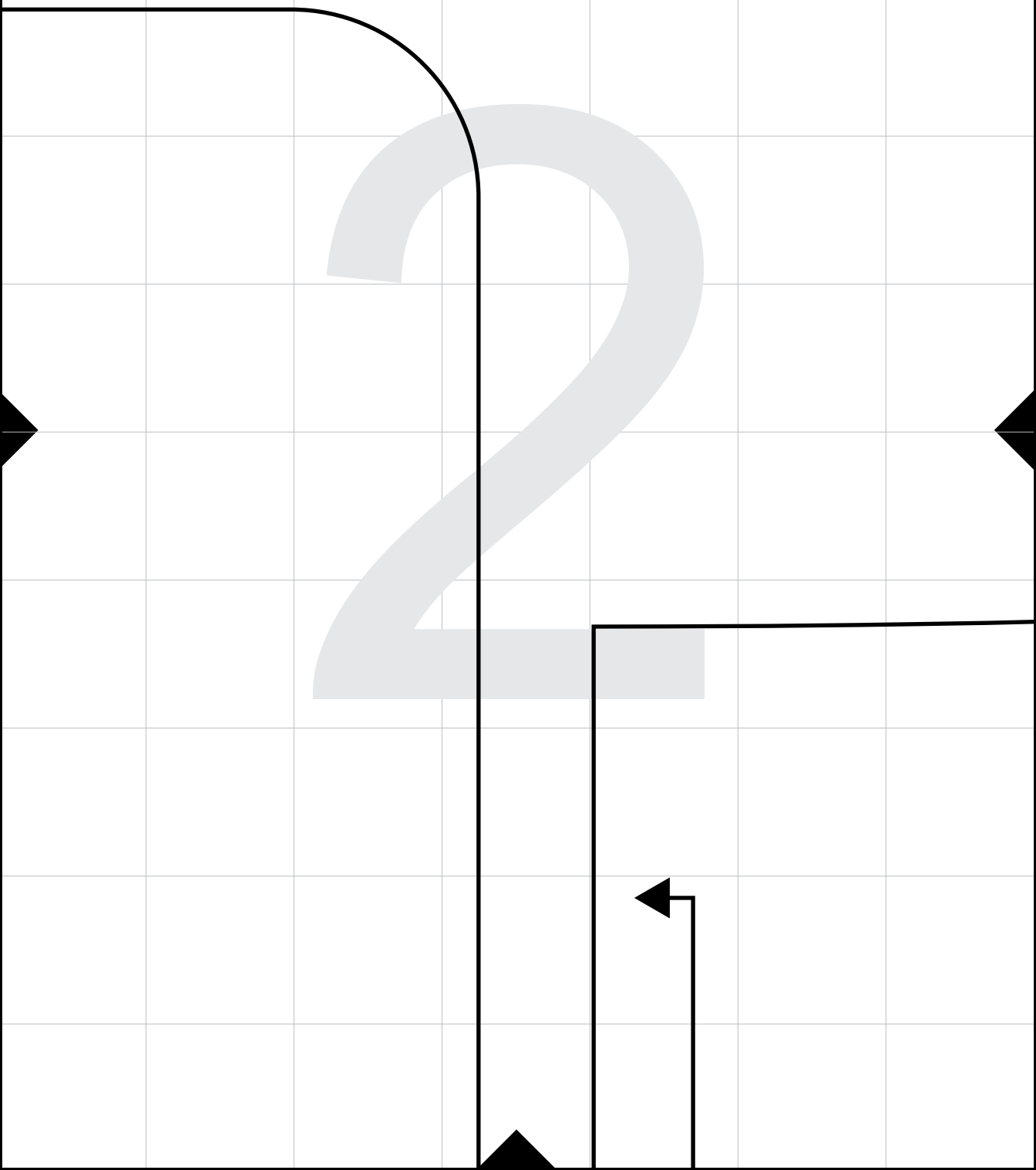


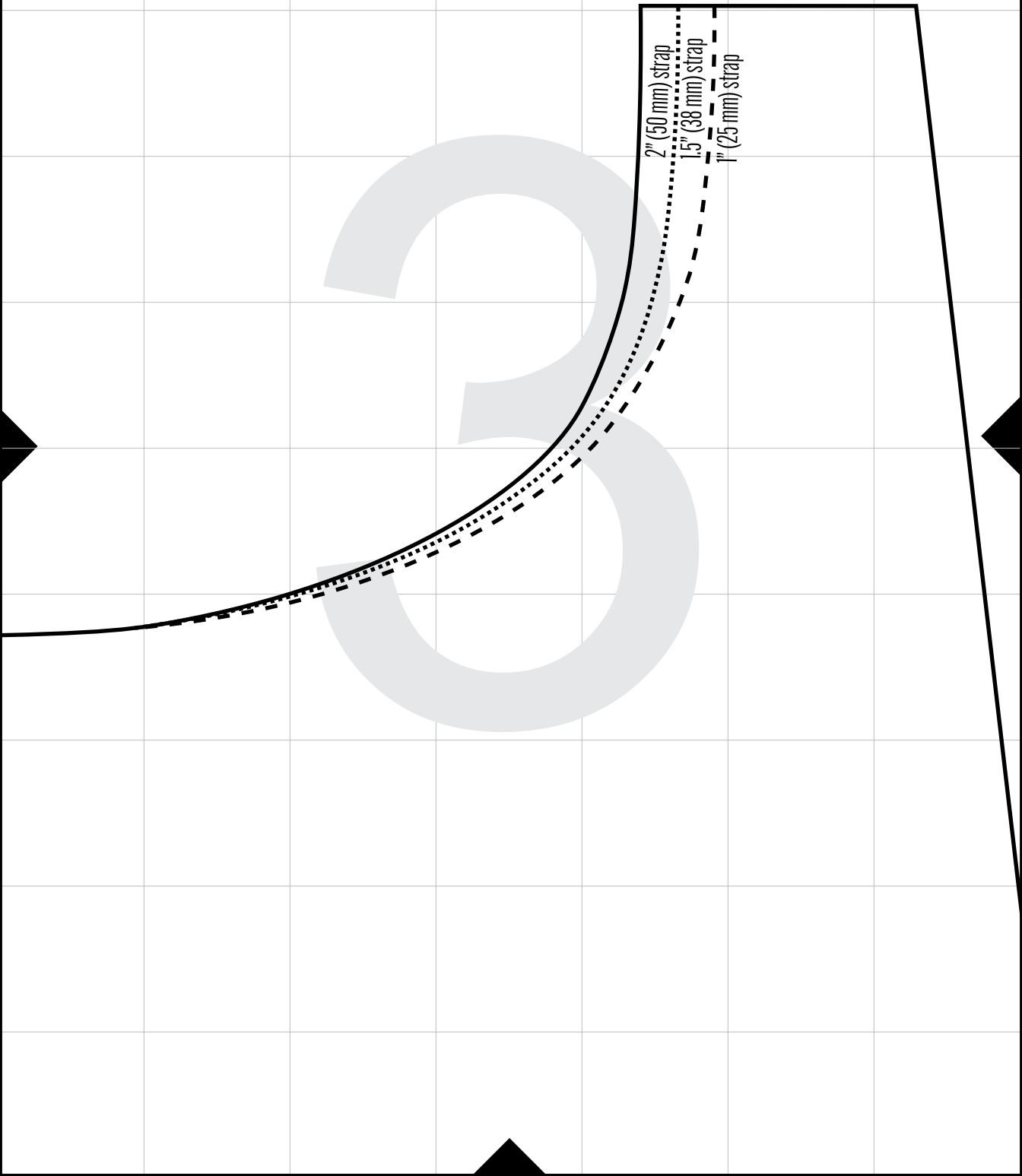
C

ZIPPER TAB

Cut 4 main fabric

Cut 4 lining

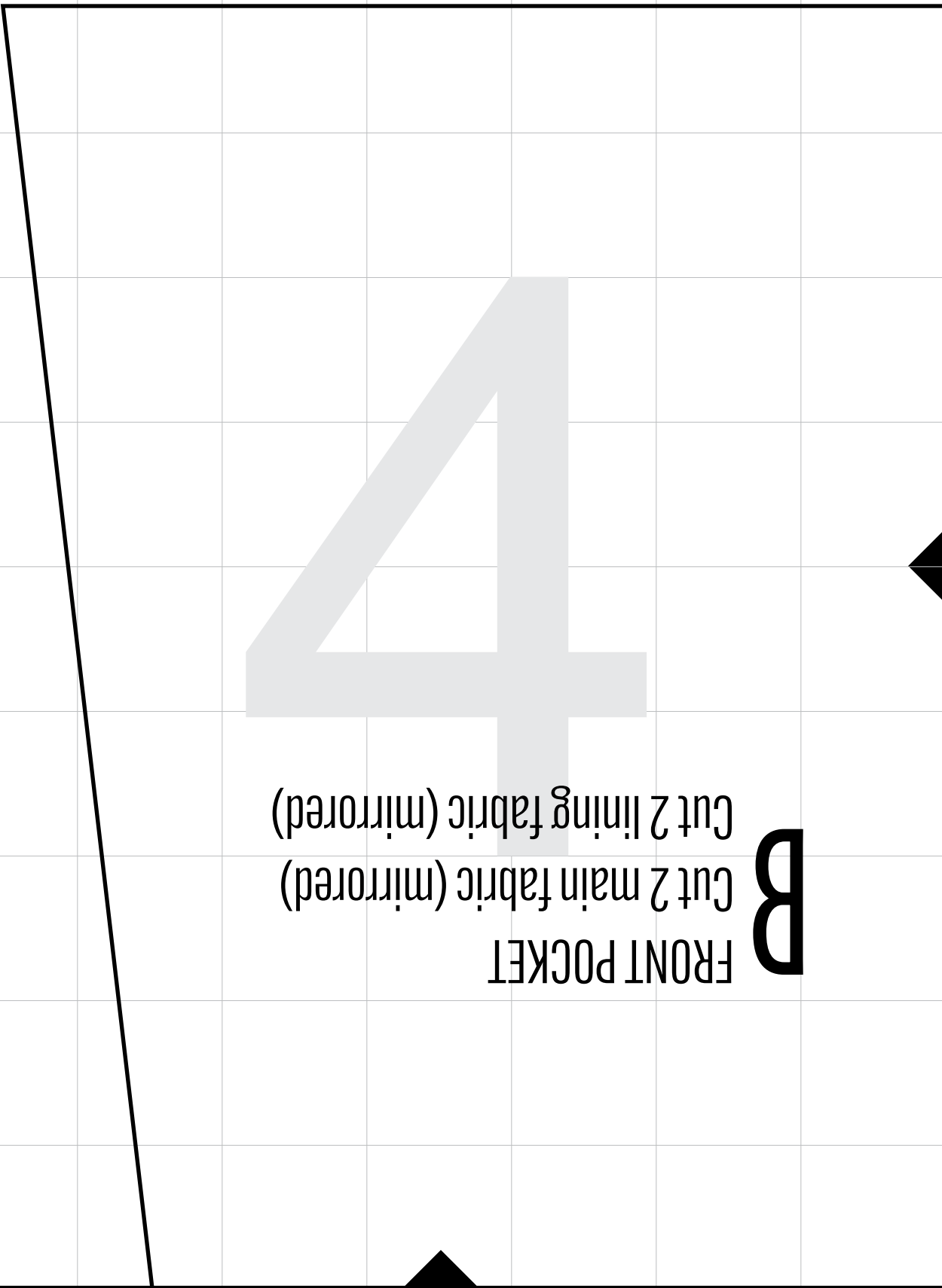






Cut 2 lining fabric (mirrored)  
Cut 2 main fabric (mirrored)

**B**  
FRONT POCKET

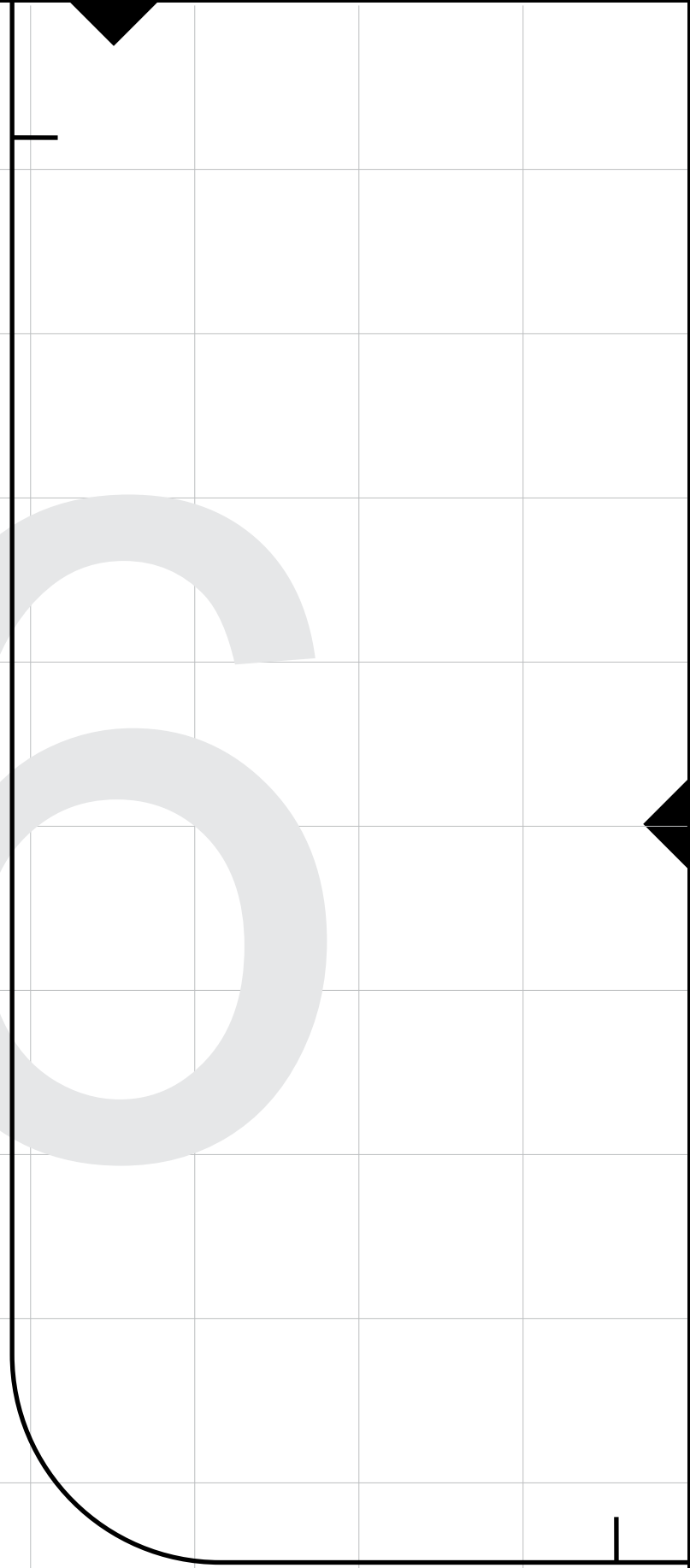
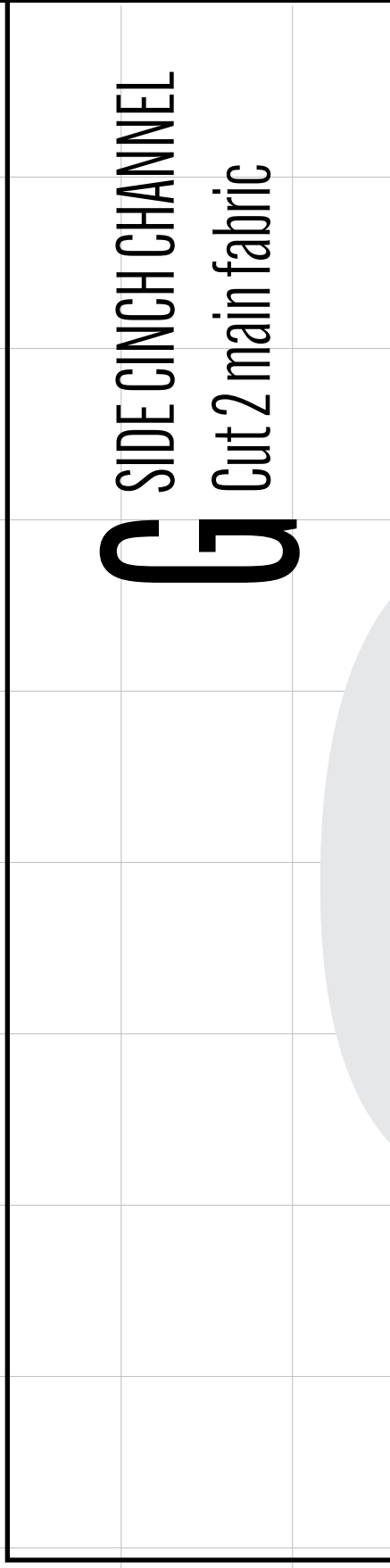
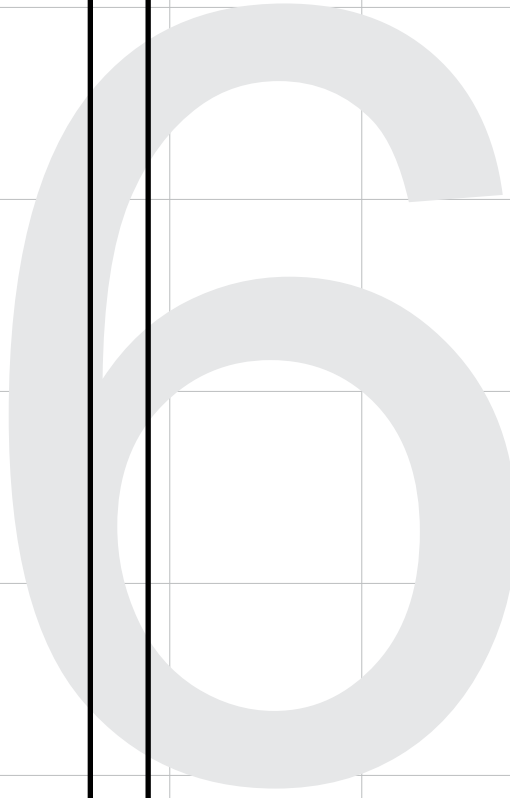


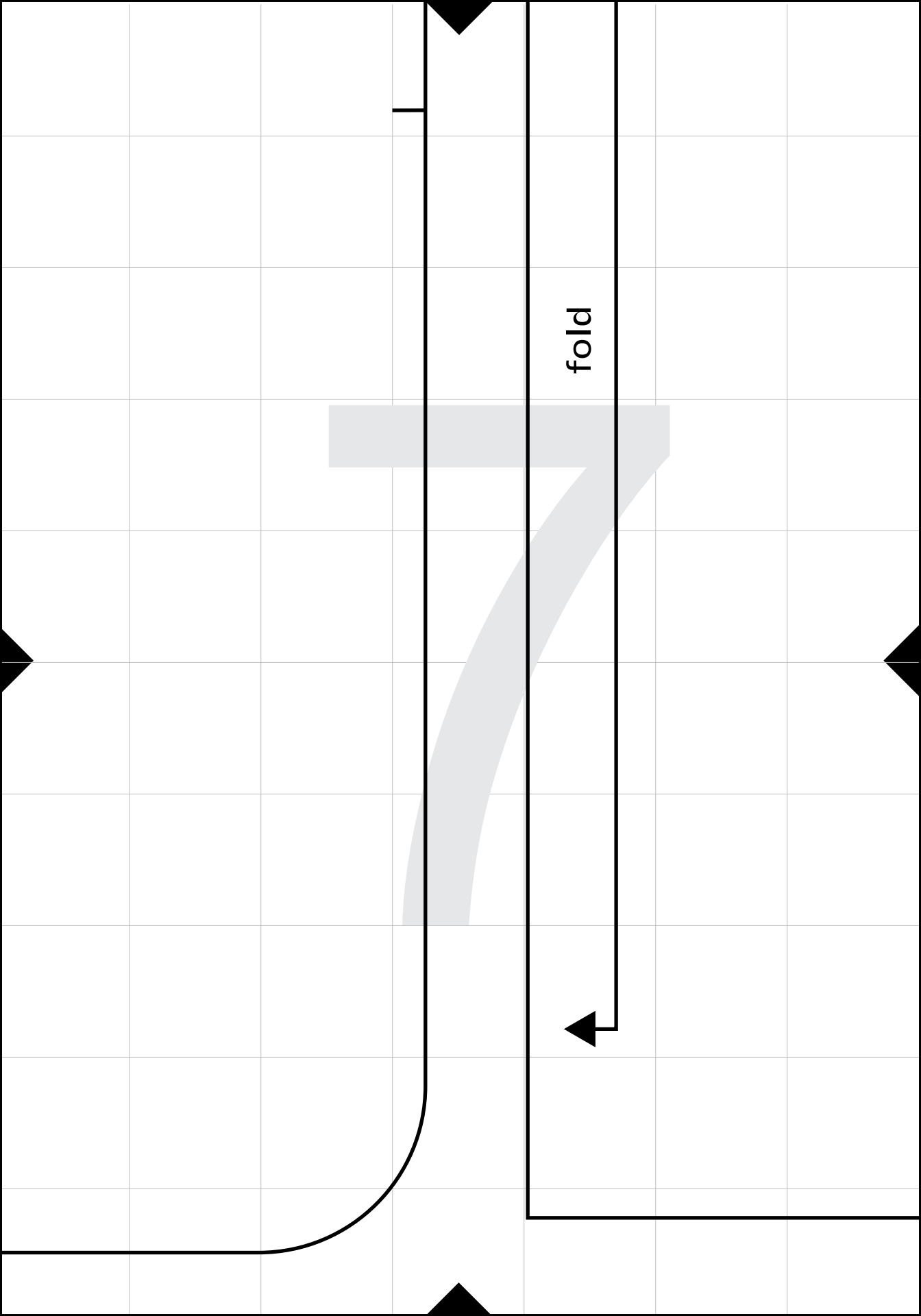
5

**G**

SIDE CINCH CHANNEL

Cut 2 main fabric





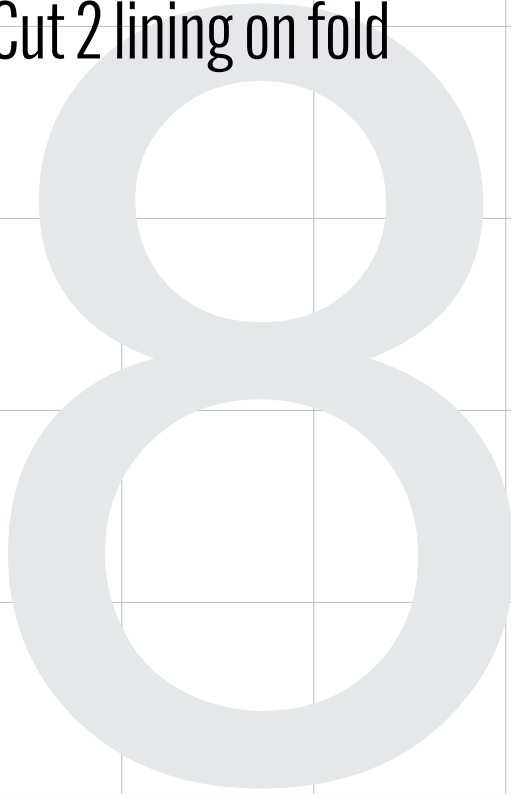
fold

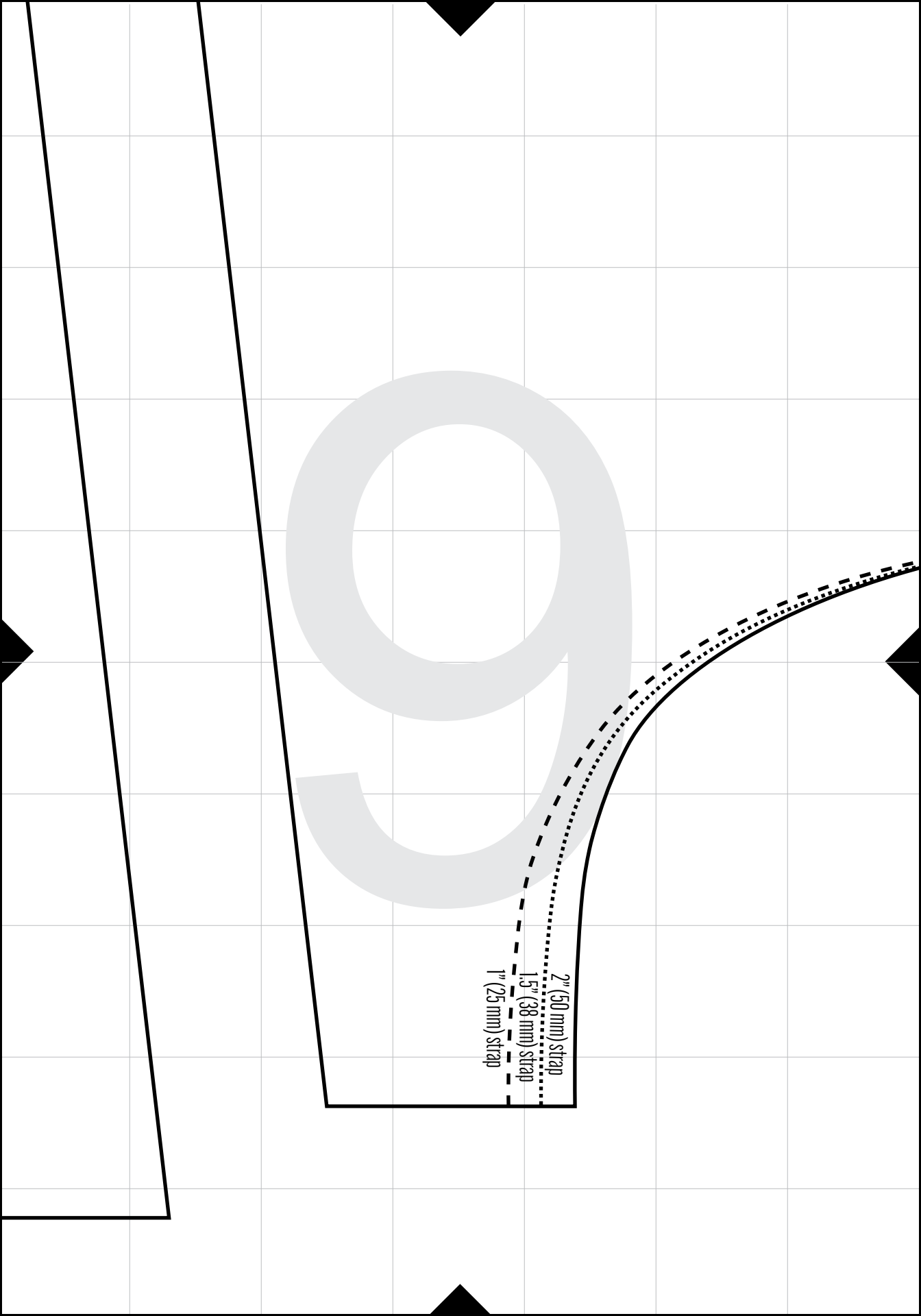
**A**

**BODY**

Cut 1 main fabric on fold

Cut 2 lining on fold

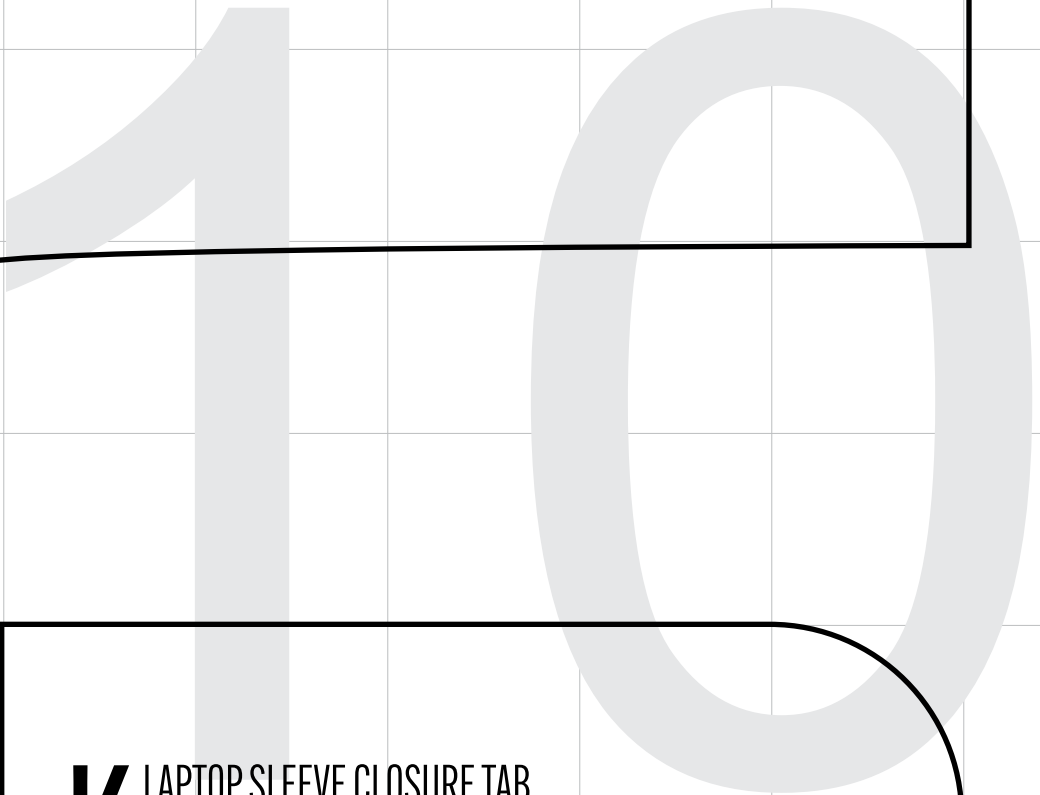




2" (50 mm) strap

1.5" (38 mm) strap

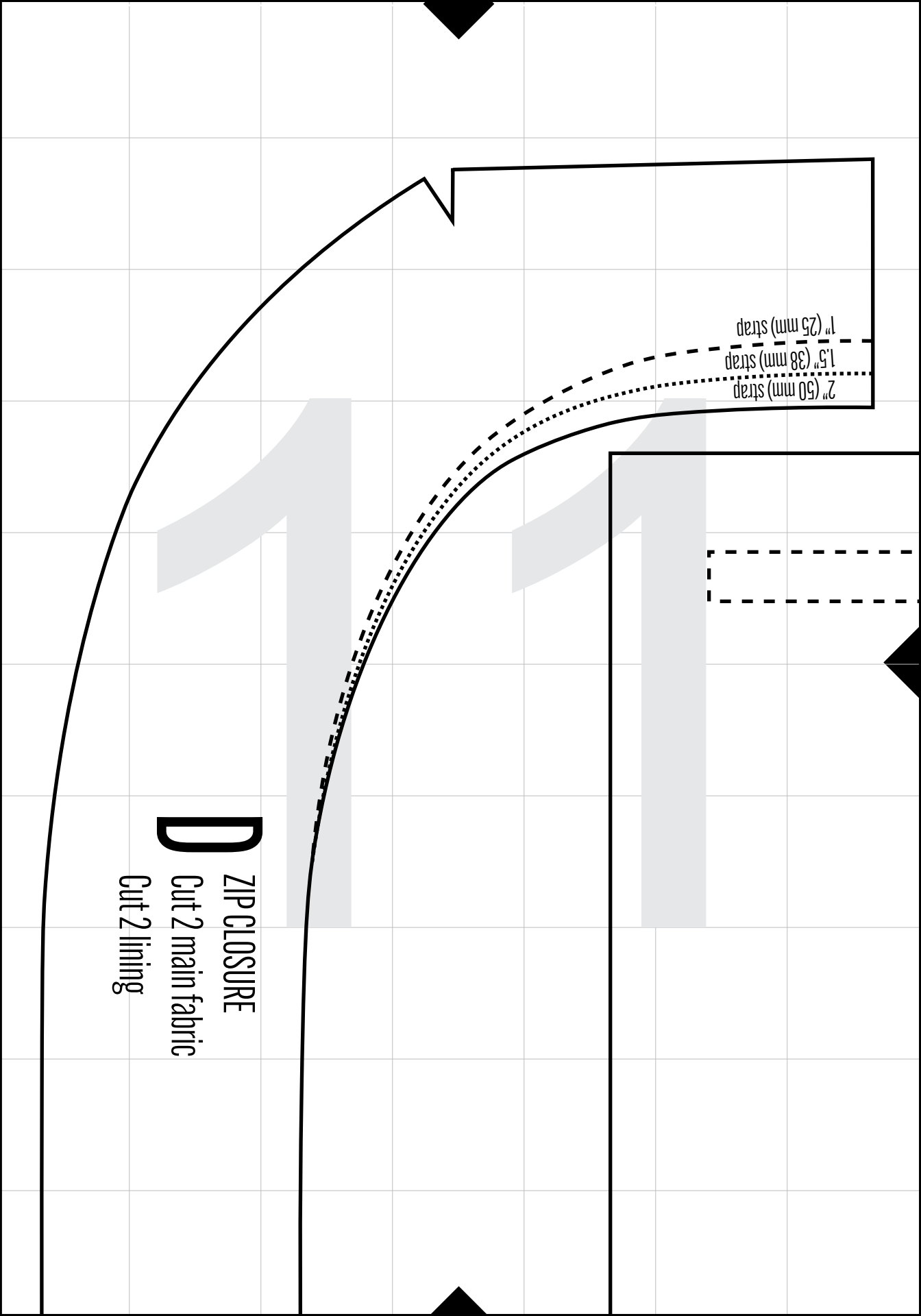
1" (25 mm) strap



**K** LAPTOP SLEEVE CLOSURE TAB  
Cut 2 lining  
(Optional) Cut 1 padding - then trim 3/8" (1 cm) off all sides

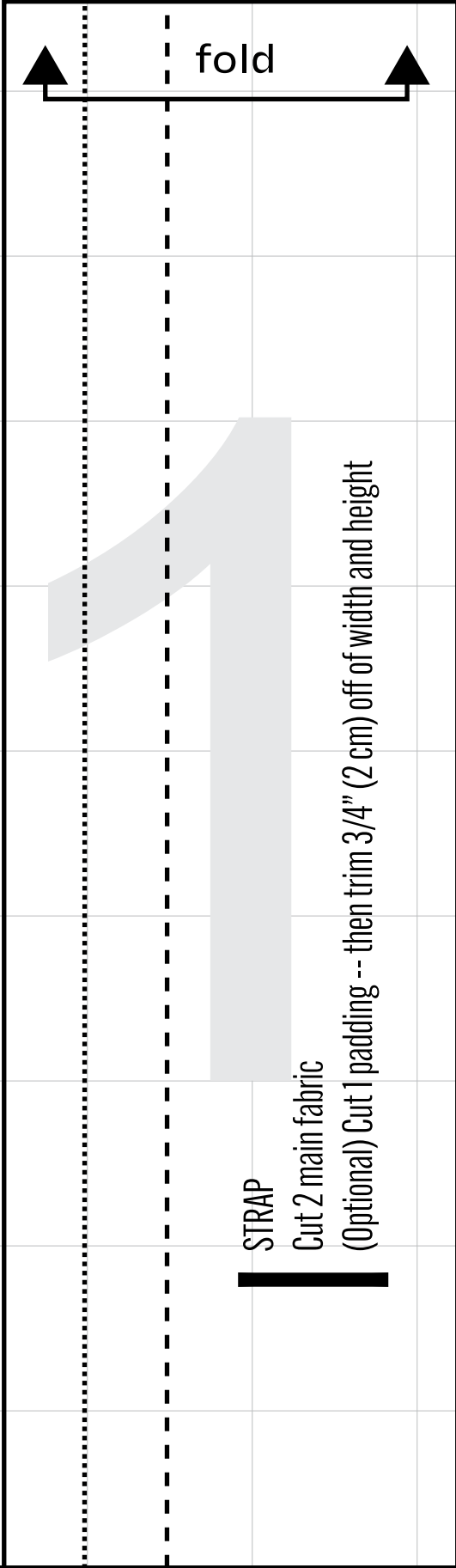
2" (50 mm) strap  
1.5" (38 mm) strap  
1" (25 mm) strap

**D**  
ZIP CLOSURE  
Cut 2 main fabric  
Cut 2 lining



zipper opening

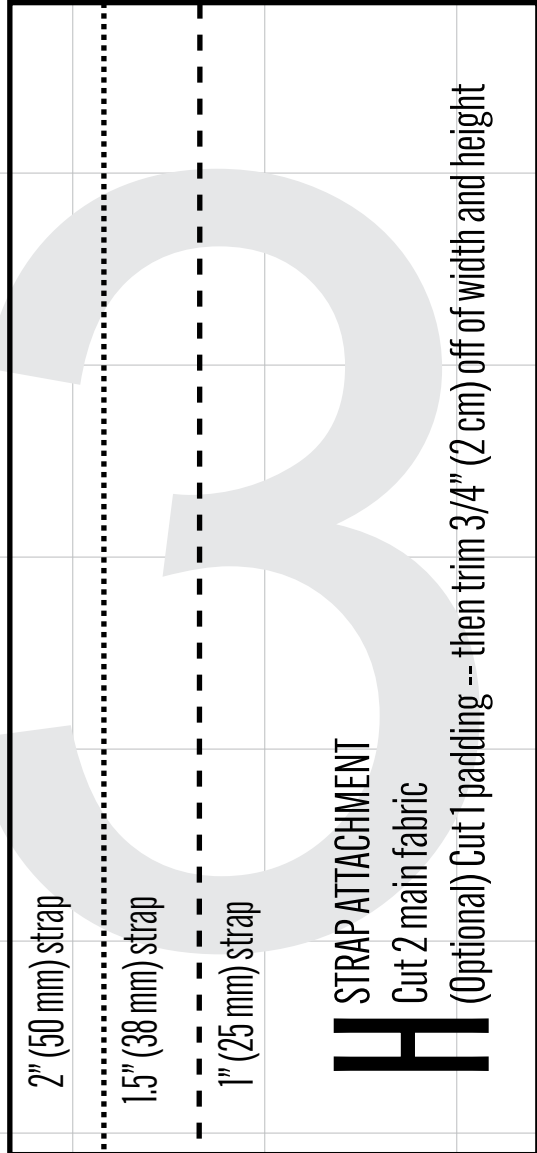
**E** INTERIOR POCKET BAG  
Cut 1 lining



### STRAP

Cut 2 main fabric

(Optional) Cut 1 padding -- then trim 3/4" (2 cm) off of width and height



### STRAP ATTACHMENT

Cut 2 main fabric

(Optional) Cut 1 padding -- then trim 3/4" (2 cm) off of width and height

## LAPTOP POCKET

Cut 2 lining on fold

Cut 1 padding on fold -- then trim  $3/4$ " off of the width and height

### Sizing your Laptop Pocket

The laptop pocket pattern piece included in the pattern will fit a laptop up to  $\sim 14.5$ " ( $\sim 37$  cm) wide and  $\sim 10.5$ " ( $\sim 26.5$  cm) tall. To modify the laptop pocket to fit your laptop better, cut 2 pieces of your lining fabric and 1 piece of padding (NOT ON FOLD) with the following dimensions:

Width: (width of your laptop) + 3" (8 cm)

Height: 2 x (height of your laptop) + 2" (8 cm)

Then, trim  $3/4$ " (2 cm) off of the width and the height of the padding piece (cutting off the seam allowance to reduce bulk).

Note: You should only modify the laptop pocket pattern piece to make it smaller - the laptop pocket pattern piece that is included in the pattern is the largest that the bag can accommodate.

15

fold



16

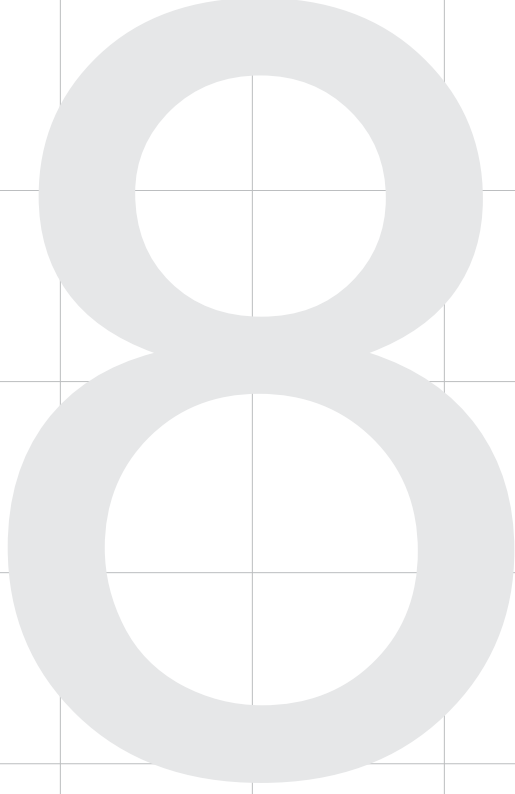
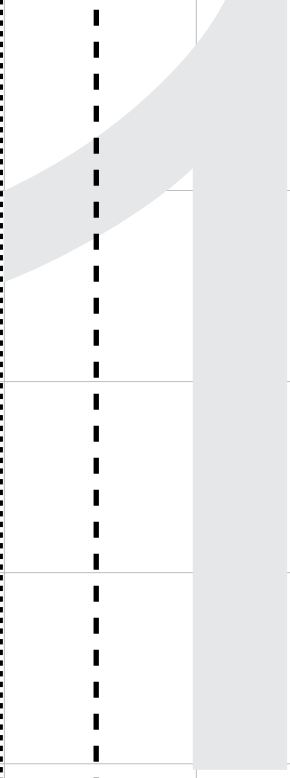


17

2" (50 mm) strap

1.5" (38 mm) strap

1" (25 mm) strap



19

20

