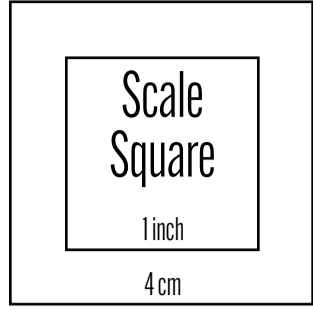
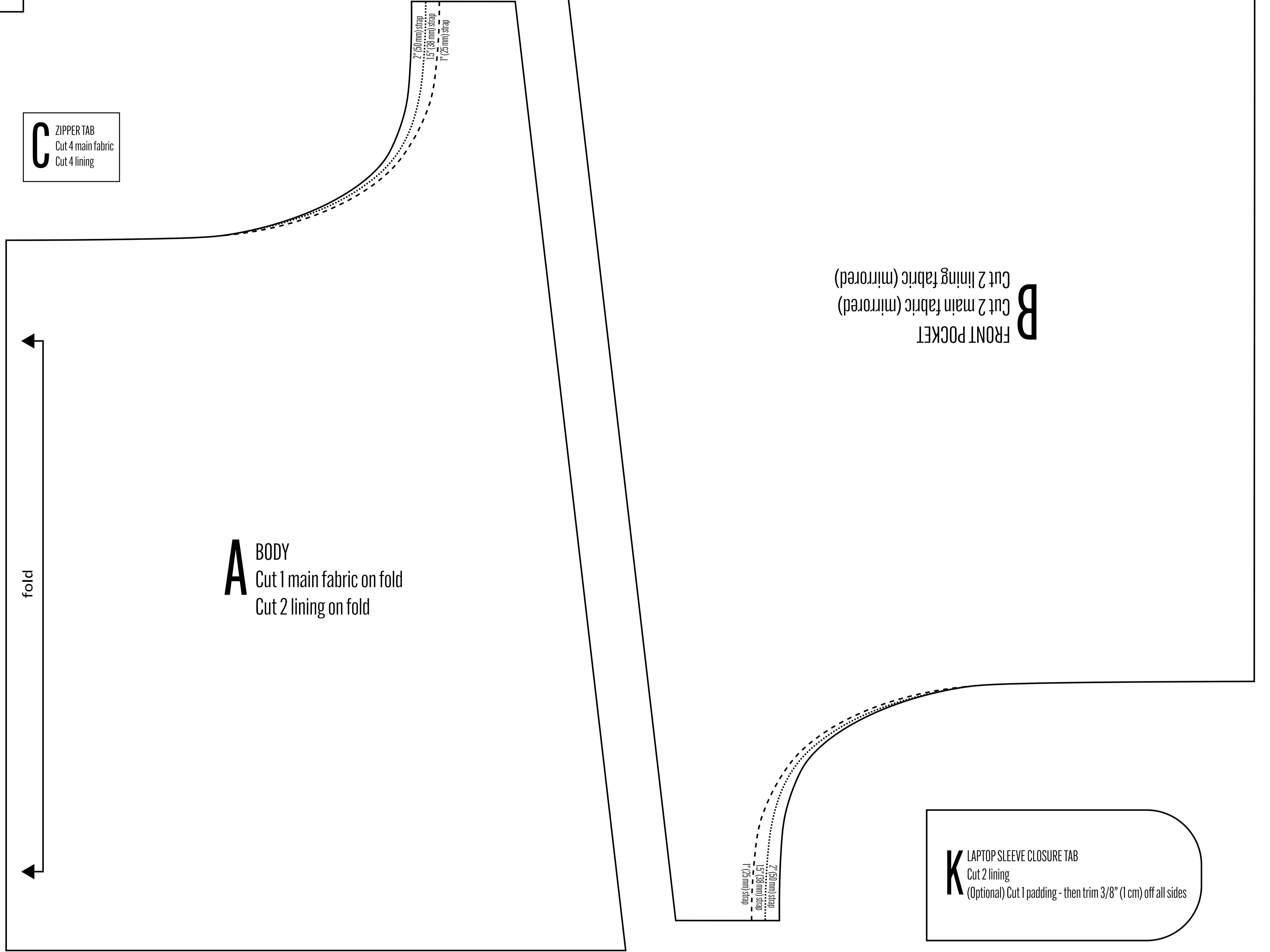
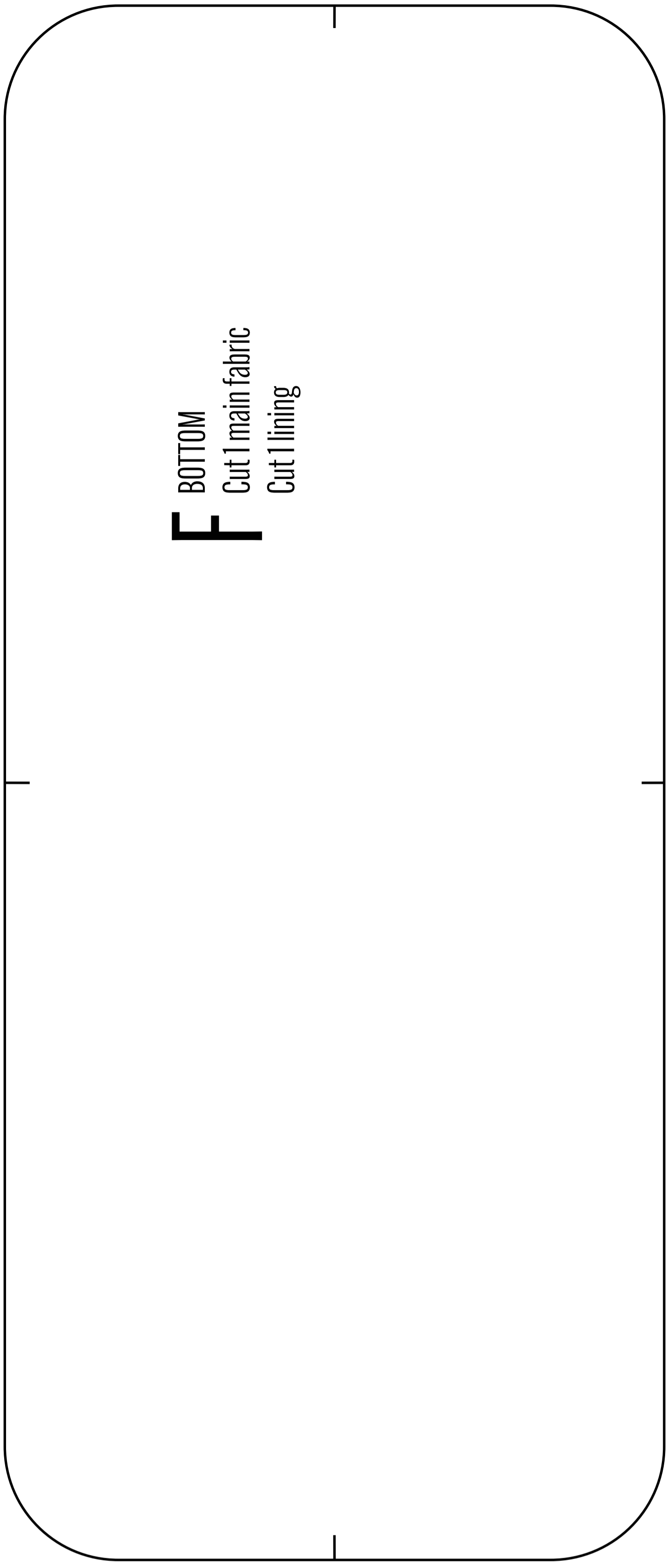


THE SATURN SLING BAG

This pattern is designed to be printed on A0 paper. Make sure your copy shop prints this page with 100% scale (do not select "fit to paper"). After printing, verify that the scale square measures 4 cm (outer square) or 1 inch (inner square).

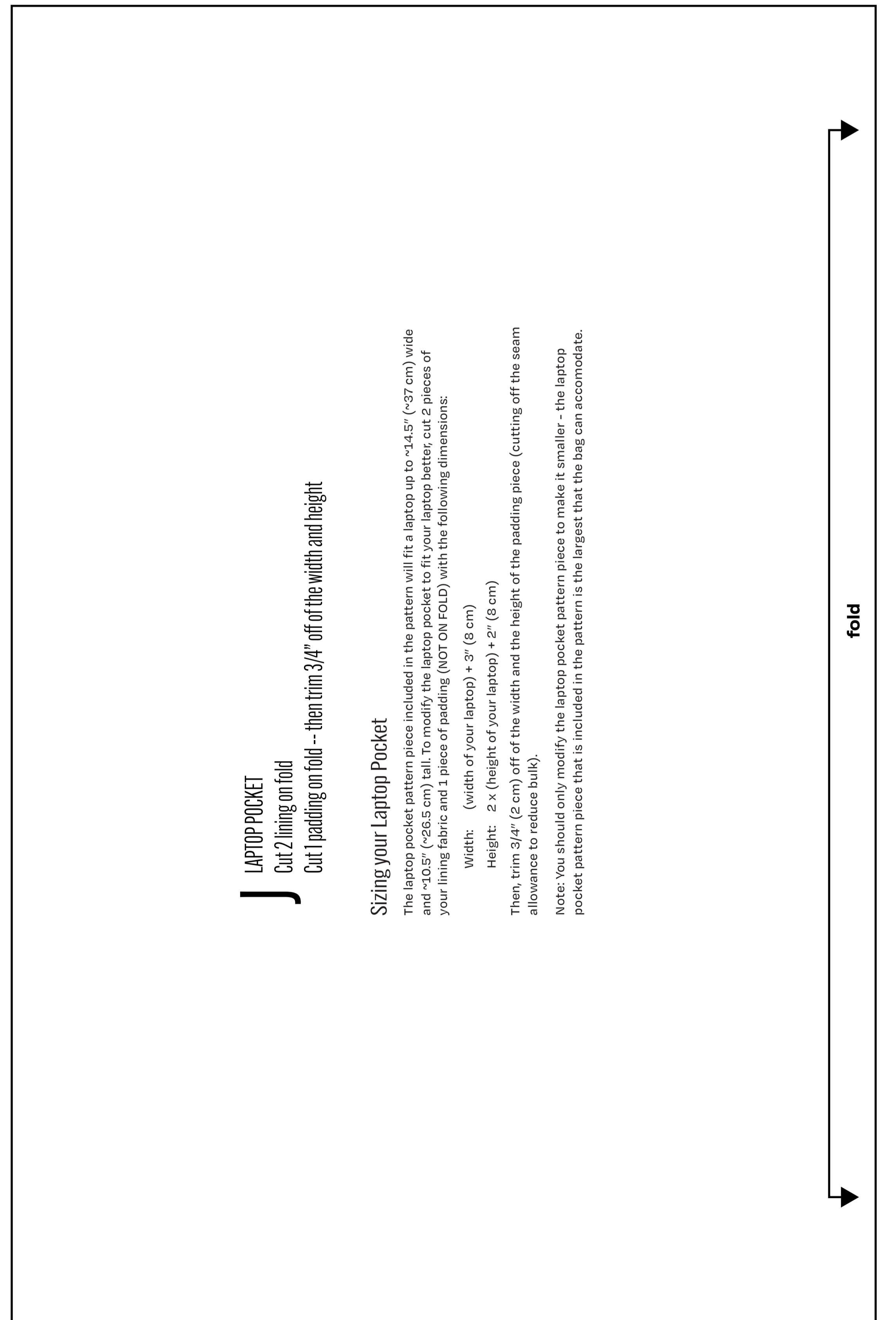
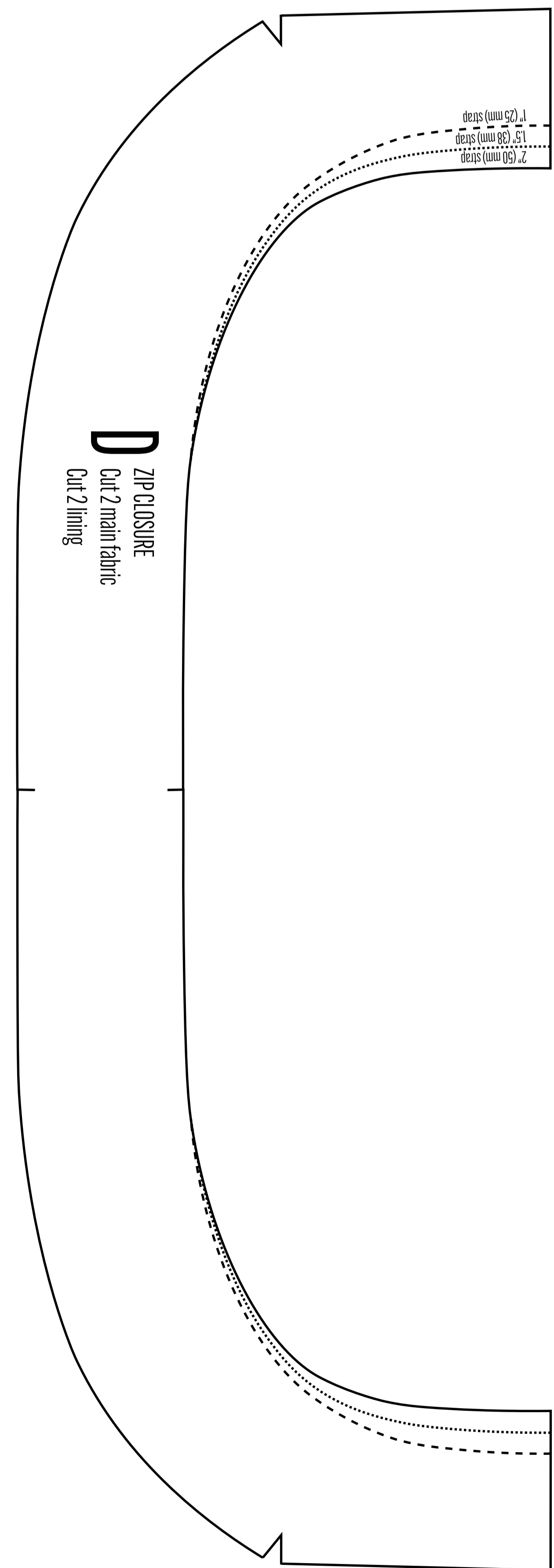
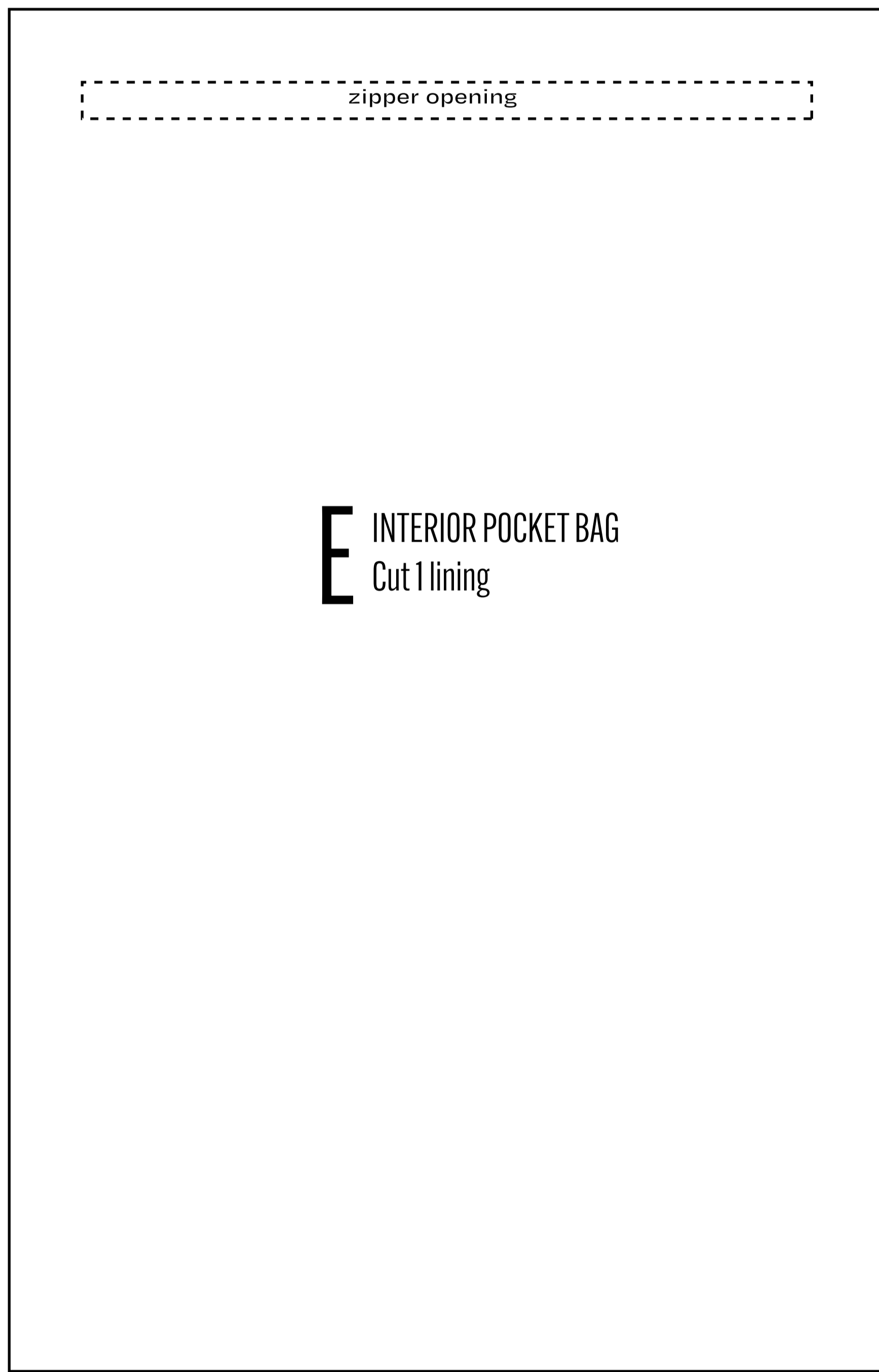


C ZIPPER TAB
Cut 4 main fabric
Cut 4 lining



B FRONT POCKET
Cut 2 main fabric (mirrored)
Cut 2 lining fabric (mirrored)

K LAPTOP SLEEVE CLOSURE TAB
Cut 2 lining
(Optional) Cut 1 padding - then trim 3/8" (1 cm) off all sides



Sizing your Laptop Pocket
The laptop pocket pattern piece included in the pattern will fit a laptop up to ~14.5" (~37 cm) wide and ~10.5" (~26.5 cm) tall. To modify the laptop pocket to fit your laptop better, cut 2 pieces of your lining fabric and 1 piece of padding (NOT ON FOLD) with the following dimensions:
Width: (width of your laptop) + 3" (8 cm)
Height: 2 x (height of your laptop) + 2" (8 cm)
Then, trim 3/4" (2 cm) off of the width and the height of the padding piece (cutting off the seam allowance to reduce bulk).
Note: You should only modify the laptop pocket pattern piece to make it smaller - the laptop pocket pattern piece that is included in the pattern is the largest that the bag can accommodate.

