

STTA

PATTERNS

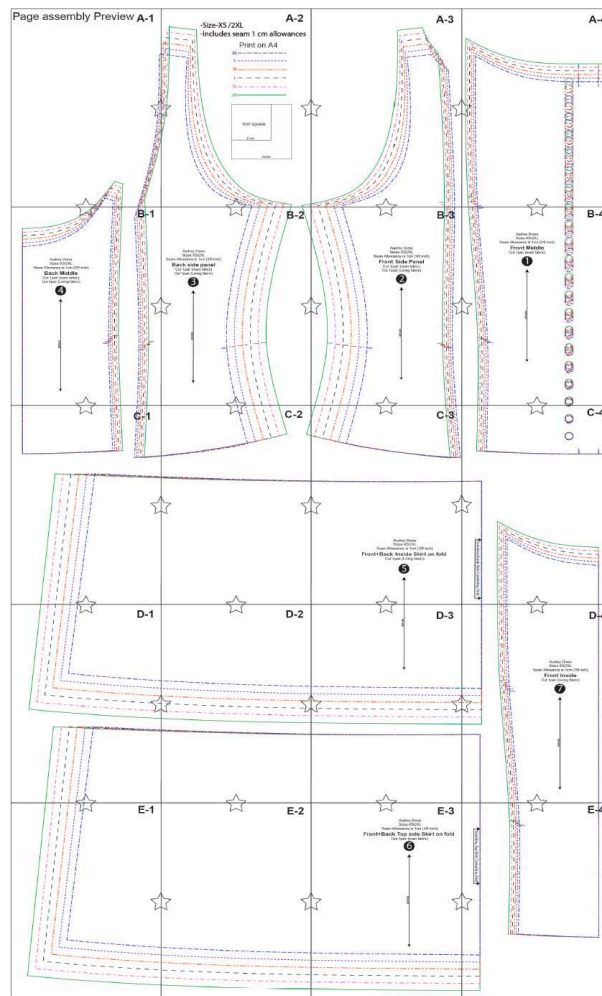


Audrey Dress

How To Assemble The Pattern

You'll need to print out the A4/US letter pdf and make sure you select 'print 100% to scale' to print at the correct size. This will leave a border around the edge of the pages, so you're able to stick together the multiple pages and cut out your pattern. The page doesn't print all the way to the edge, it is normal to have a gap to be able to attach the next page.

Below illustrates how the pages stick together.



Sewing Supplies Checklist

- Sewing Machine
- Measuring Tape
- Co-ordinating Thread
- Pins or Clips
- Fabric Marker or Chalk
- Hand-sewing Needle
- Seam Ripper
- Buttons (21) (1.5cm or 0.5")

Fabric Suggestions

It is recommended to use a chickenkari, cotton, woven fabric for a comfortable fit. This dress is intended to be a fitted.

Fabric Requirements

For XS-L sizes, you will need 3.75 meters or 4 yards of fabric.

For XL-XXL sizes, you will need 4.75 meters or 5 yards of fabric.

Sizing

SIZES	BUST	WAIST	HIPS
XS	33.1"	25.2"	36.2"
S	34.6"	26.8"	37.8"
M	36.2"	28.3"	39.4"
L	37.8"	29.9"	40.9"
XL	39.4"	31.5"	42.5"
XXL	40.9"	33.1"	44.1"

SIZES	BUST	WAIST	HIPS
XS	84cm	64cm	92cm
S	88cm	68cm	96cm
M	92cm	72cm	100cm
L	96cm	76cm	104cm
XL	100cm	80cm	108cm
XXL	104cm	84cm	112cm

Pieces to Cut

x2 front middle (Main Fabric)

x2 front inside (Lining)

x4 front side panel (2-Main Fabric, 2-Lining)

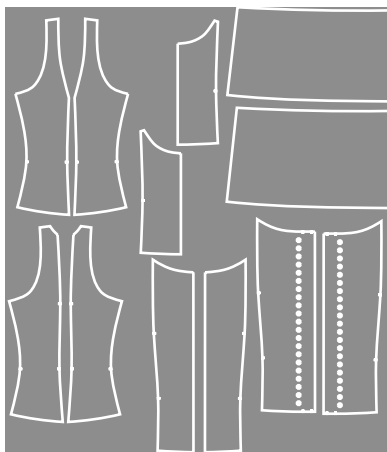
x4 back side panel (2-Main Fabric, 2-Lining)

x4 back middle panel (2-Main Fabric, 2-Lining)

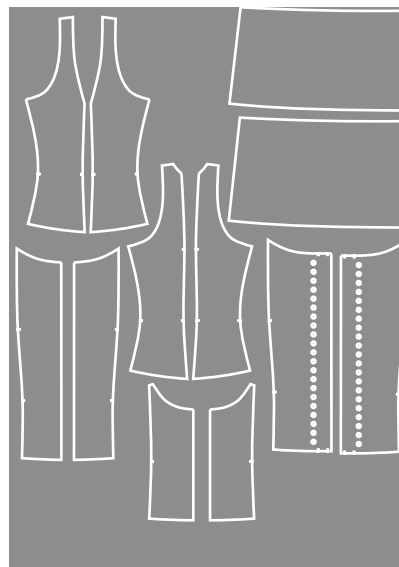
x2 front and back inside skirt on-fold (Lining)

x2 front and back top side skirt on-fold (Main Fabric)

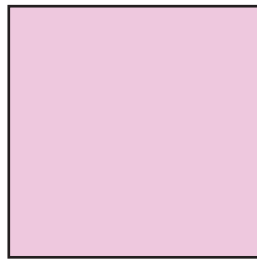
XS-L Cutting Layout



XL-XXL Cutting Layout



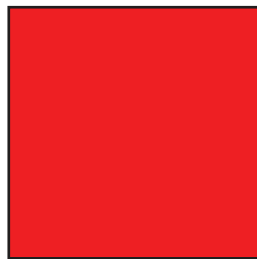
Keys



Fabric Right Side



Fabric Wrong Side

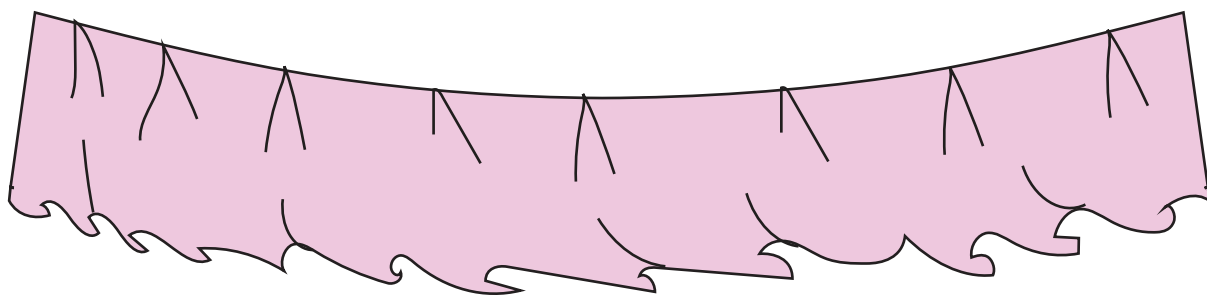
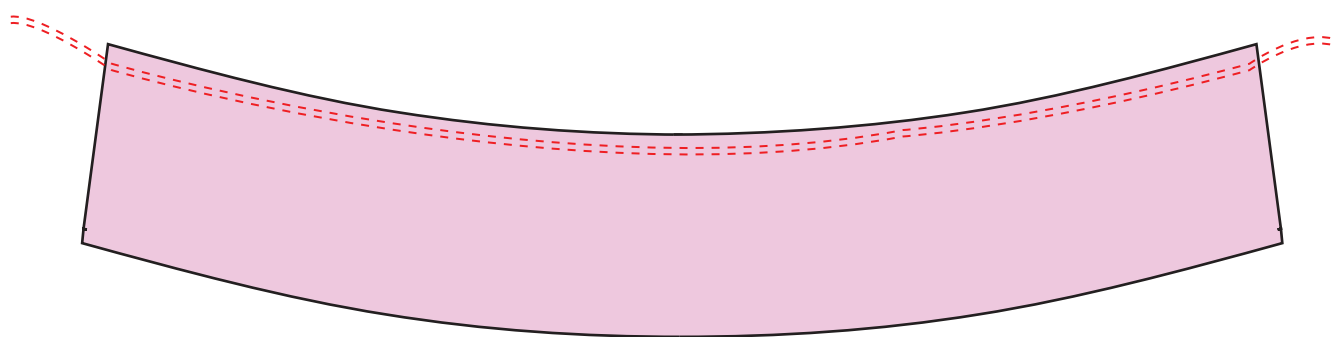


Highlight of Current Step

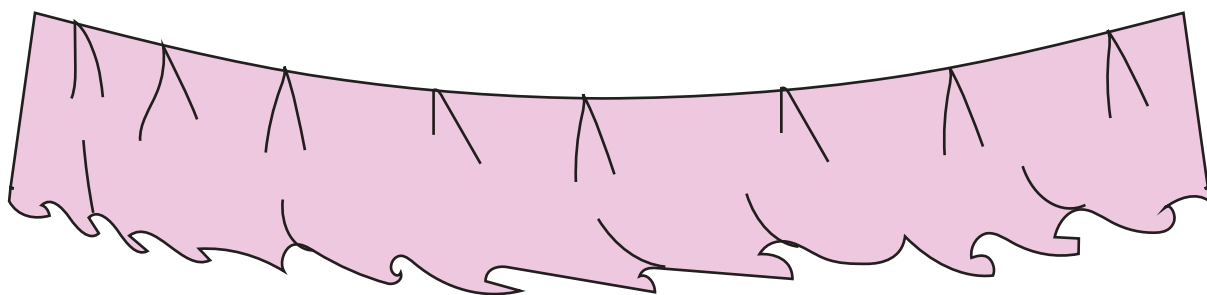
Construction

Step 1 - Print out the pattern piece and tape it together. Cut out your desired fabric, ensuring that you have prewashed your fabric to prevent shrinkage.

Step 2 - Begin with front and back skirt so take your top skirt panel, and set your machine at biggest stitch such as 5. Sew 0.5cm from the top left side edge till the end. Don't back stitch, the threads need to be free and unblocked. Separate the threads, hold tight and carefully pull the fabric. Gather slowly, bit by bit until the panel matches the hem of the dress hem. Arrange gathers evenly. Repeat the same step for skirt inside panel.

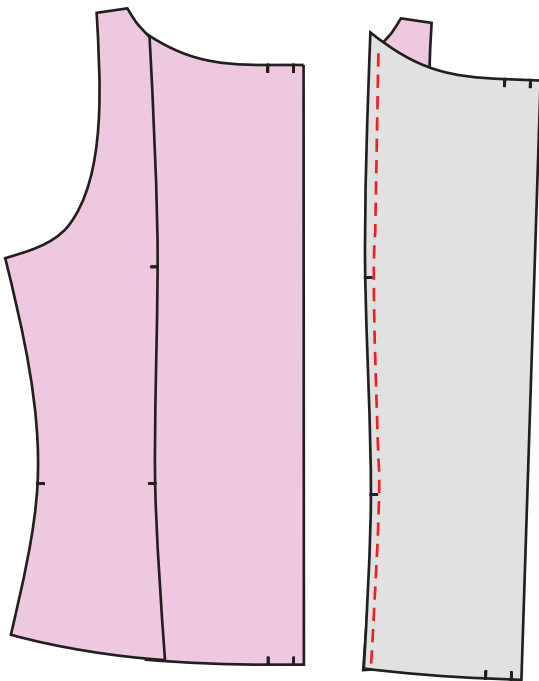
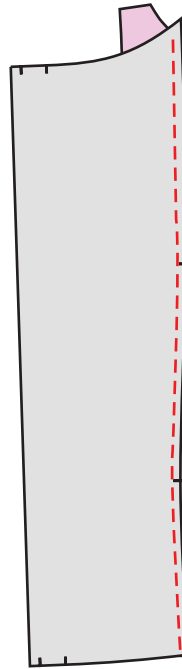
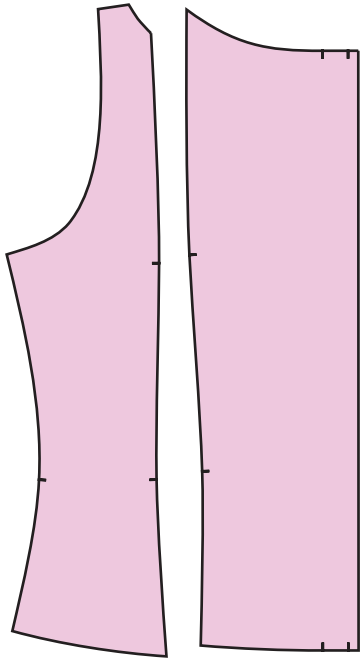


Main Fabric

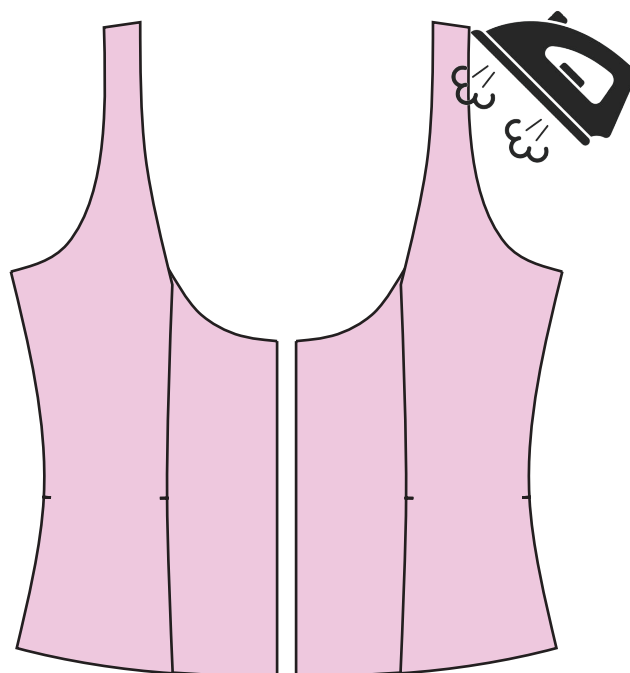
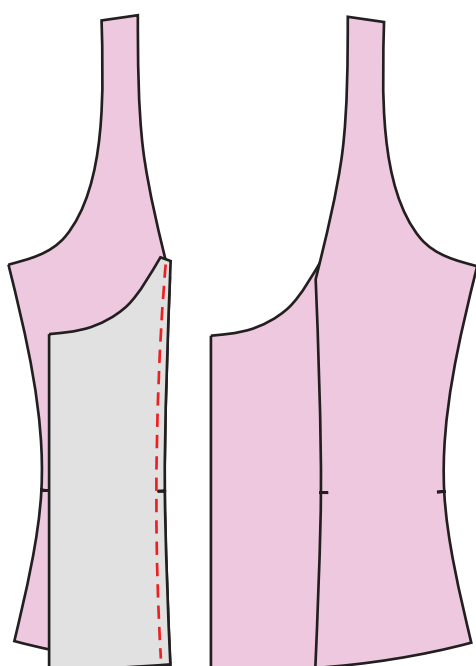
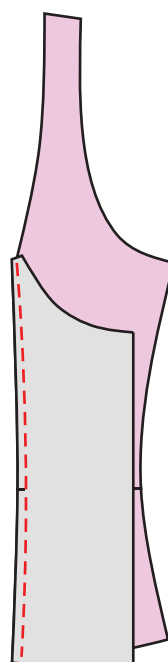
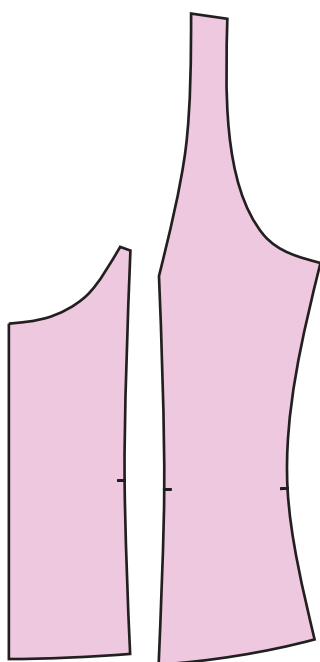


Lining

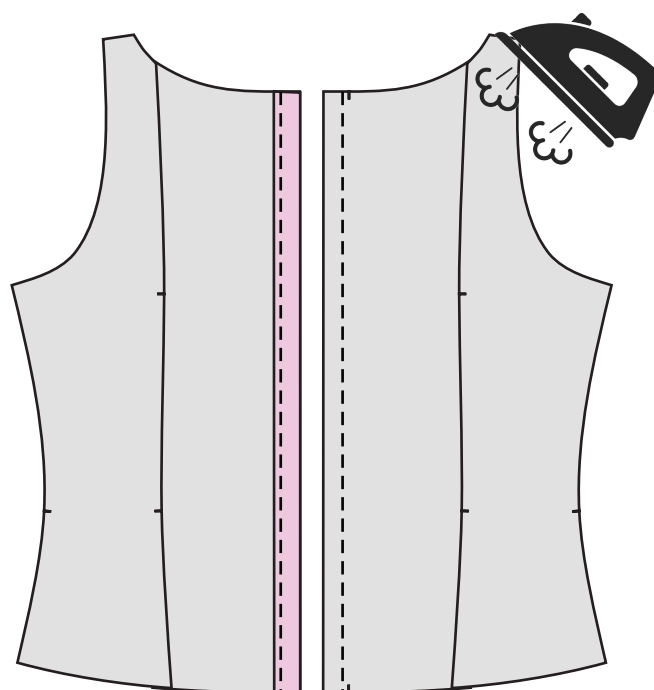
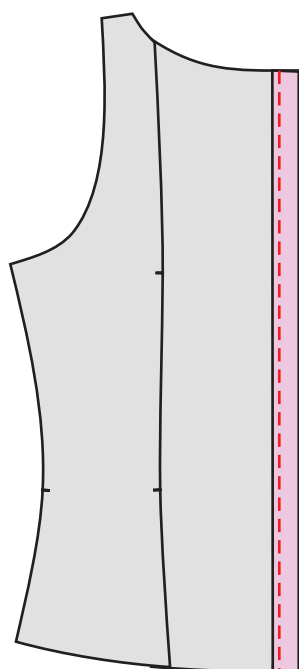
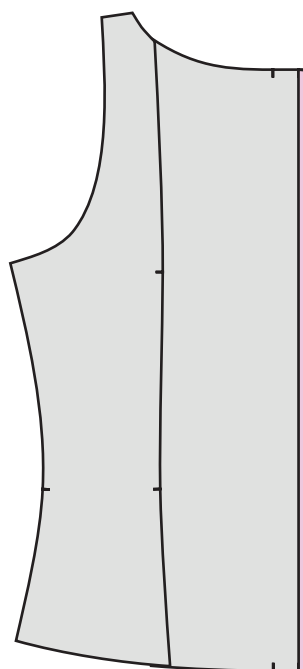
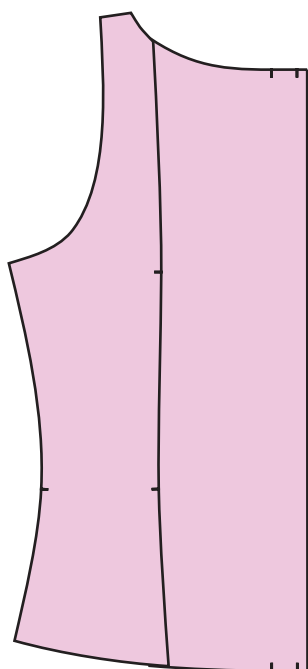
Step 3 - Next, take the front middle and front side panel, aligning the edges together from bottom. Pin them in place to ensure they stay aligned, then stitch the edges together using a 1cm or 3/8" seam allowance, ensuring that the right sides are facing each other. Repeat the same step for other pair of main fabric and lining too.



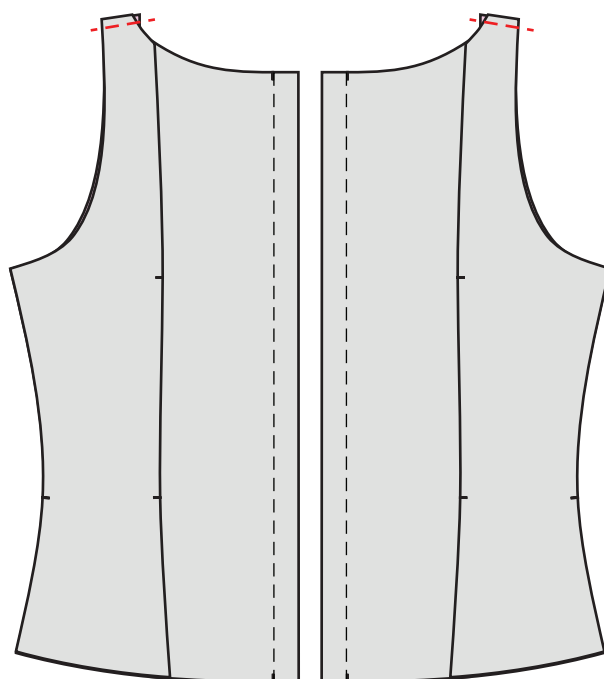
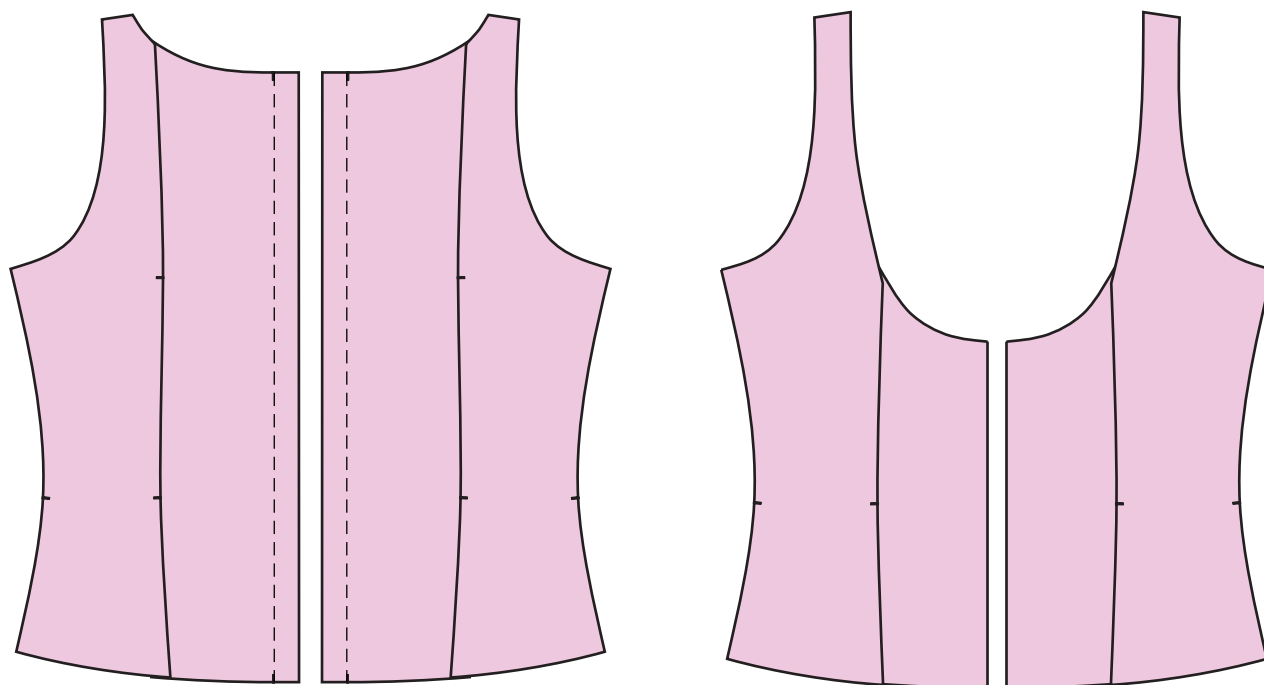
Step 4 - Then, take the back middle and back side panel, aligning the edges together. Pin them in place to ensure they stay aligned, then stitch the edges together using a 1cm or 3/8" seam allowance, ensuring that the right sides are facing each other. Repeat the same step for other pair of main fabric and lining too.



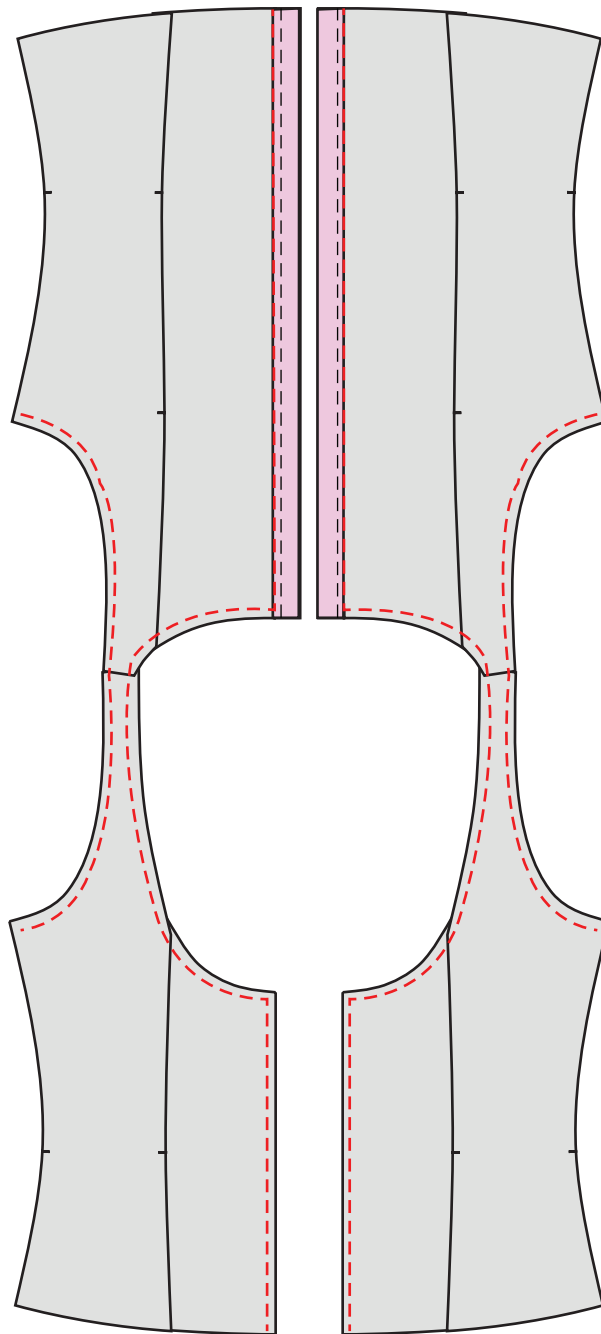
Step 5 - Now we'll make the button placket. Take your front panel and mark the notches from the pattern. Fold the center front inwards towards the wrong side, first to the first notch, then again to the second notch to create a double fold. Edge stitch close to the fold to secure it. Repeat this process on the other front panel.



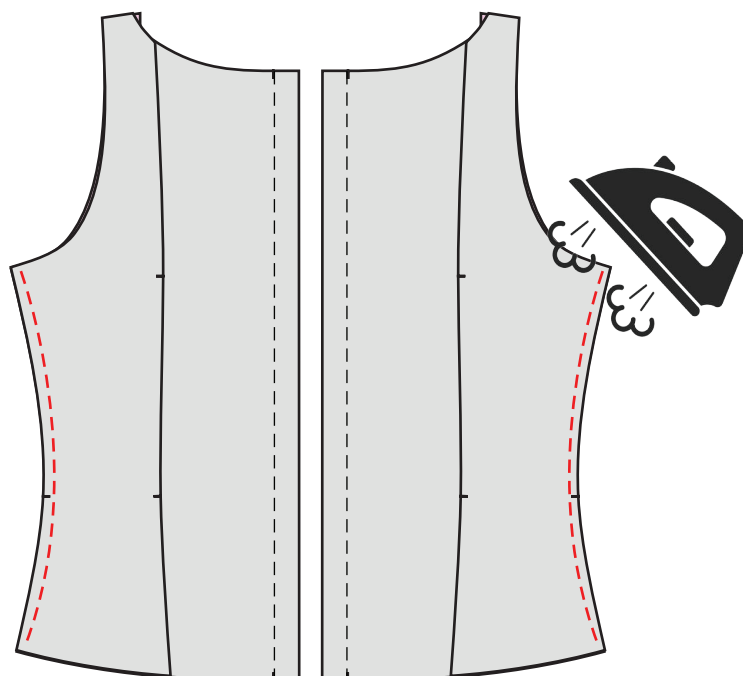
Step 6 - Now, take your front and back panels. Pin the front and back shoulder seams together with right sides facing each other. Sew in place using a 1cm or 3/8" seam allowance. Repeat this process for the other front and back panel, as this will act as a lining.



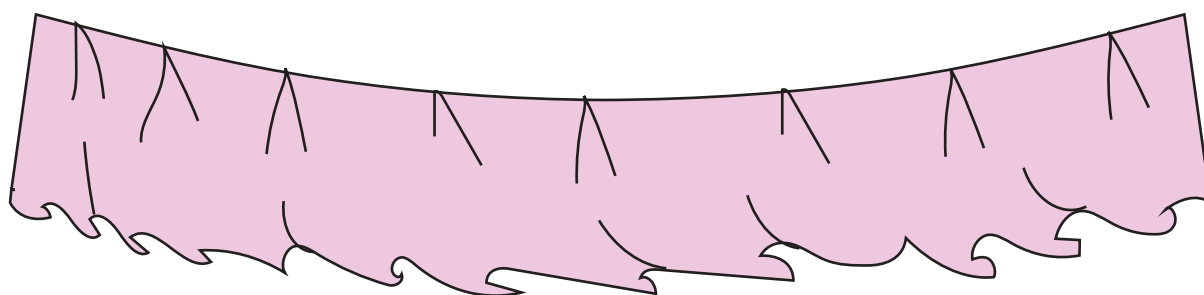
Step 7 - Then place the lining piece directly on top of the bodice with the wrong side facing up (this will mean both right sides are touching). Sew around the armholes, neckline, center front and center back using a 1cm or 3/8" seam allowance. Do not sew the side seam and hem. Once done, pull the bodice to the right side through the hem or side seam. Press all the edges to create a crisp finish.



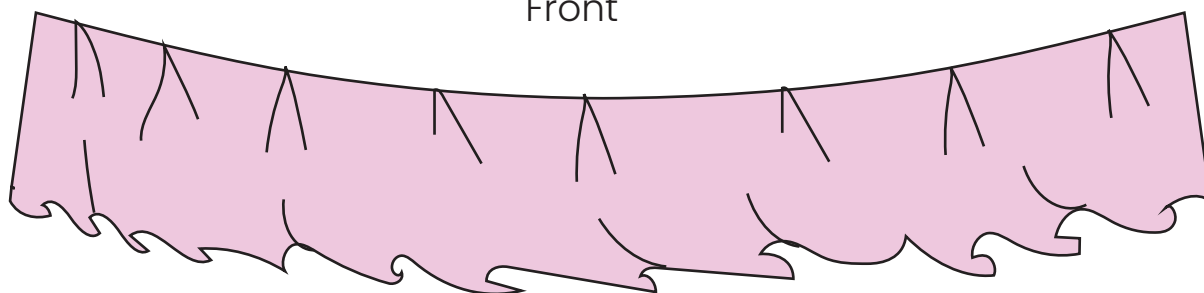
Step 8 - Sew the side seams ensuring right sides are together using a 1cm or 3/8" seam allowance. You will catch all four layers into one seam. Finish seam with an overlocker or zig-zag stitch.



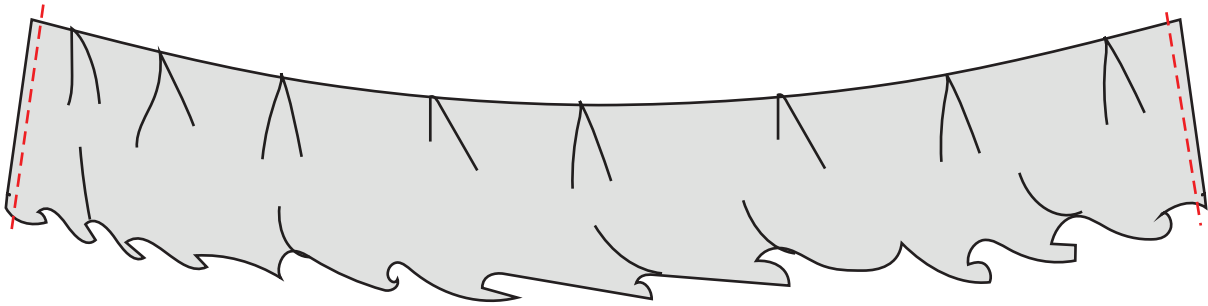
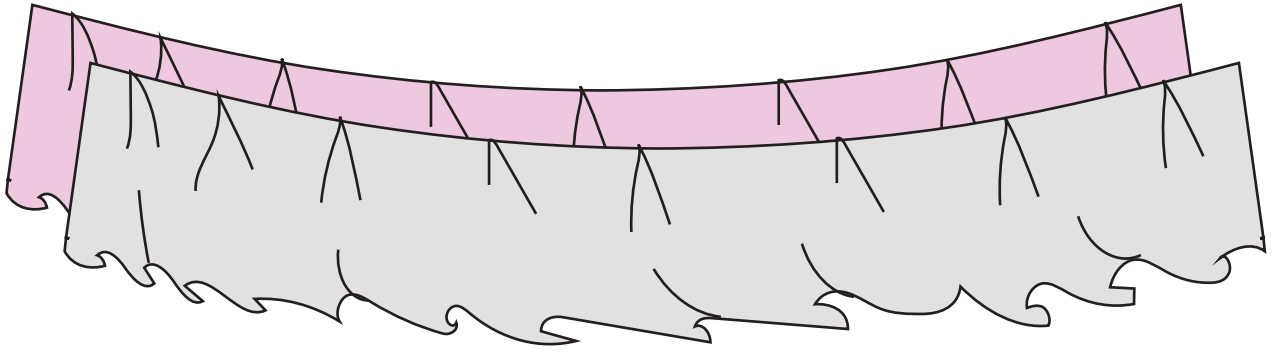
Step 9 - Do the same process with skirt (main fabric and lining). Sew the side seams ensuring right sides are together using a 1cm or 3/8" seam allowance. You will catch all four layers into one seam. Finish seam with an overlocker or zig-zag stitch.



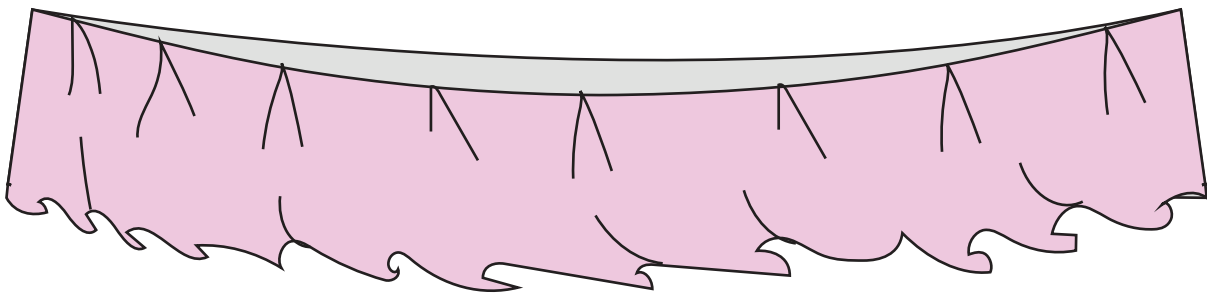
Front



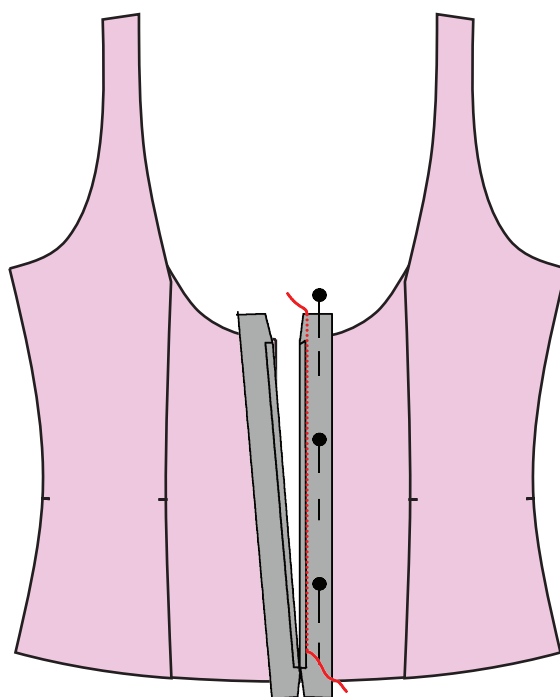
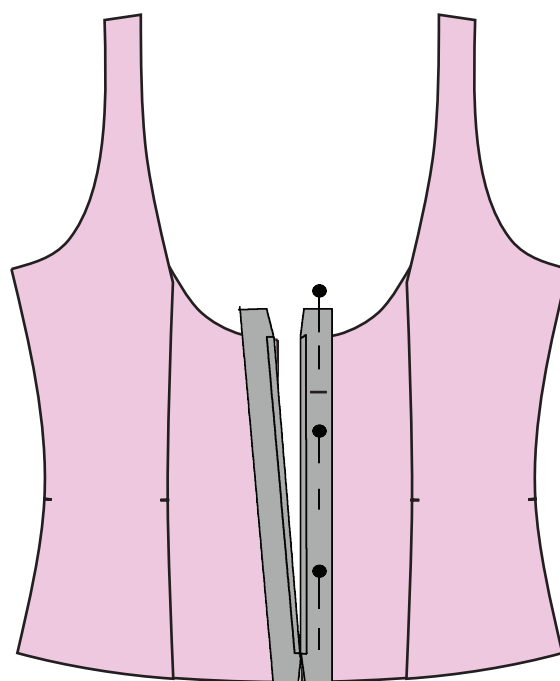
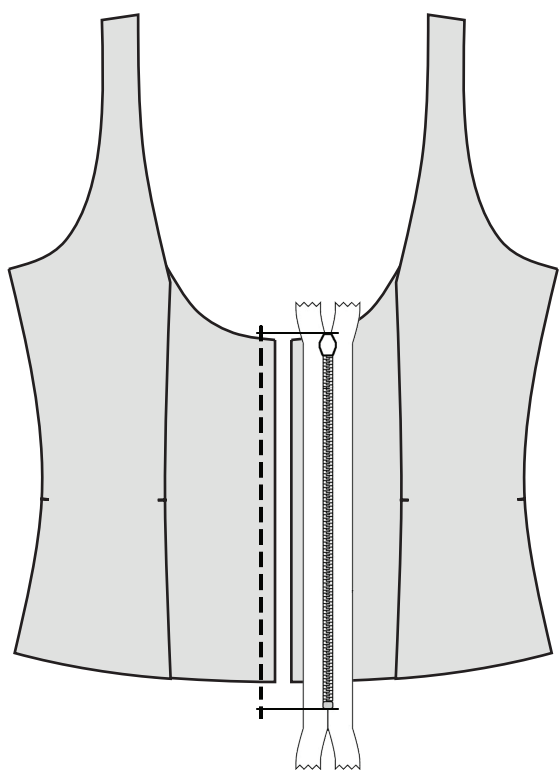
Back



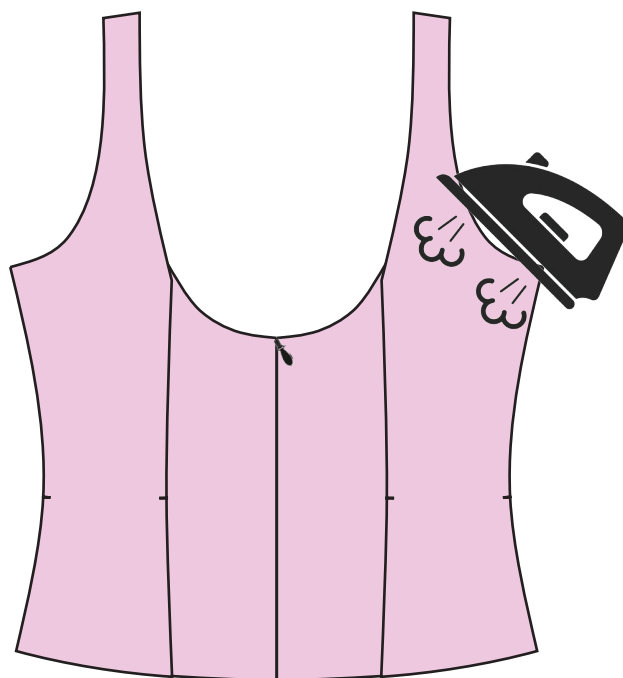
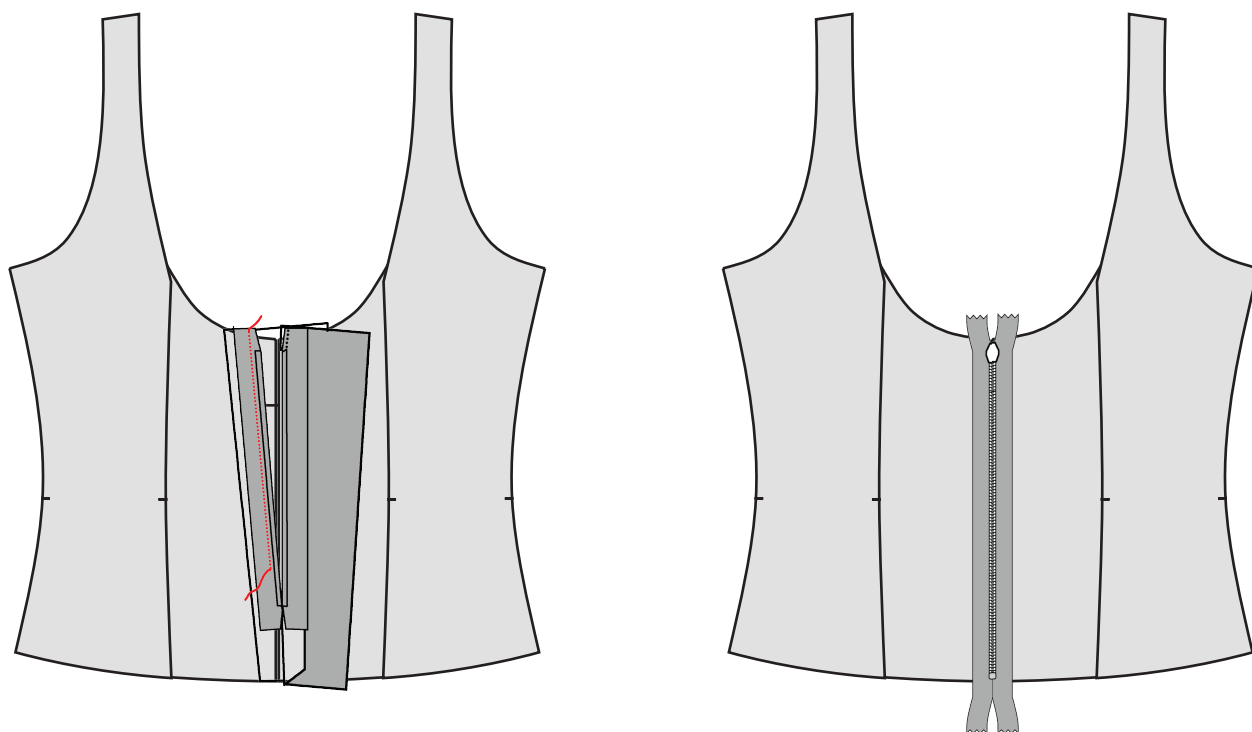
LOOK AFTER SIDE SEAM STITCH



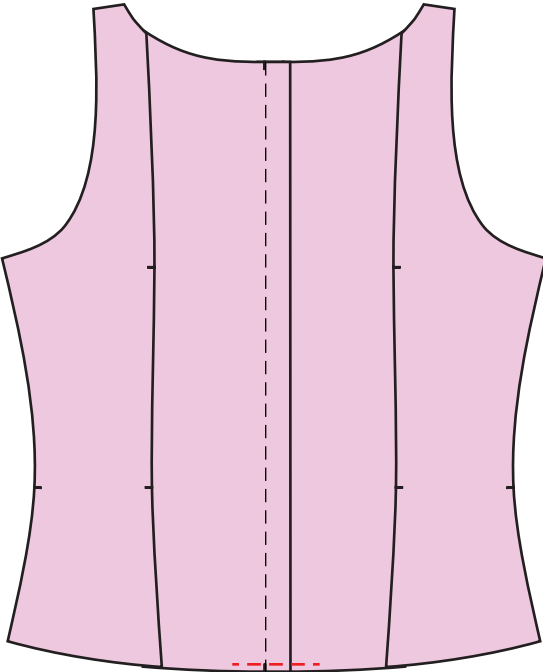
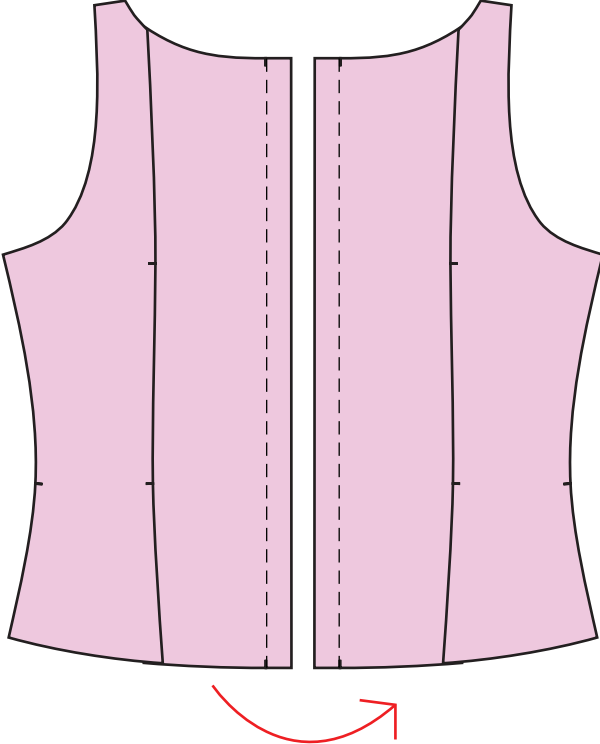
Step 10 – Mark the zipper positioning at the back of the dress at the top from the pattern. Turn the zipper to the wrong side and align it with the edges of the top. Open the zipper fully and place one edge of the zipper over the edge of the top. Pin it in place. Install the invisible zipper foot on your sewing machine. With your fingers, uncurl the zipper teeth and sew as close to the teeth as possible.



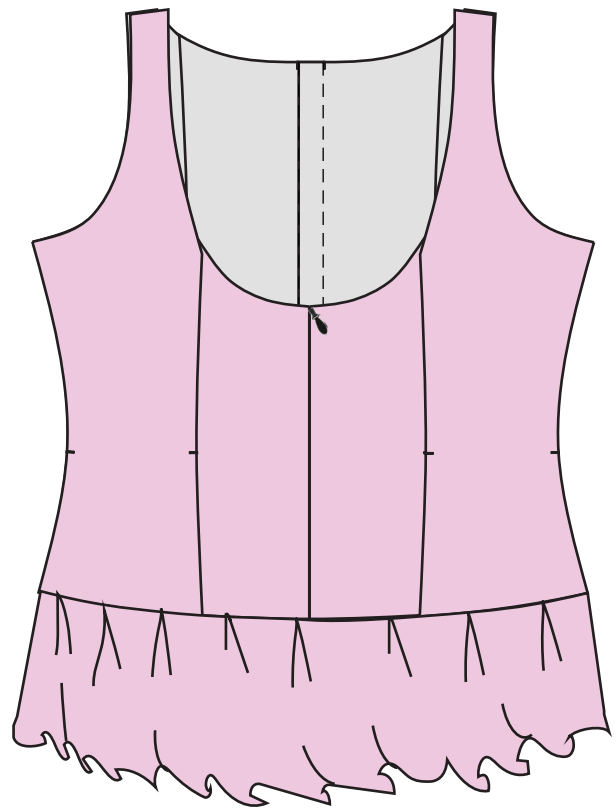
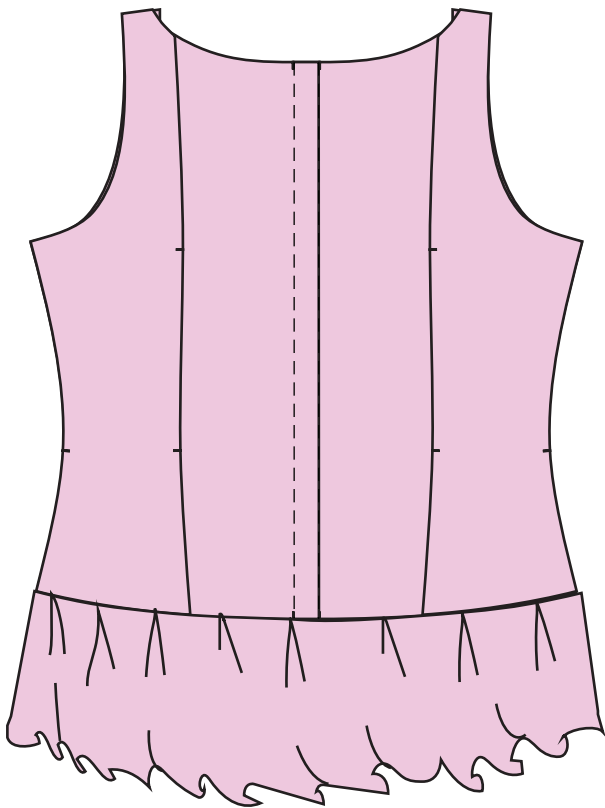
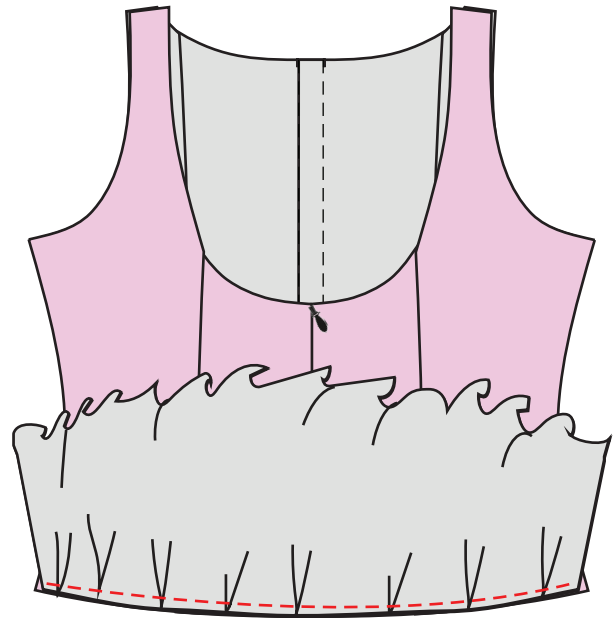
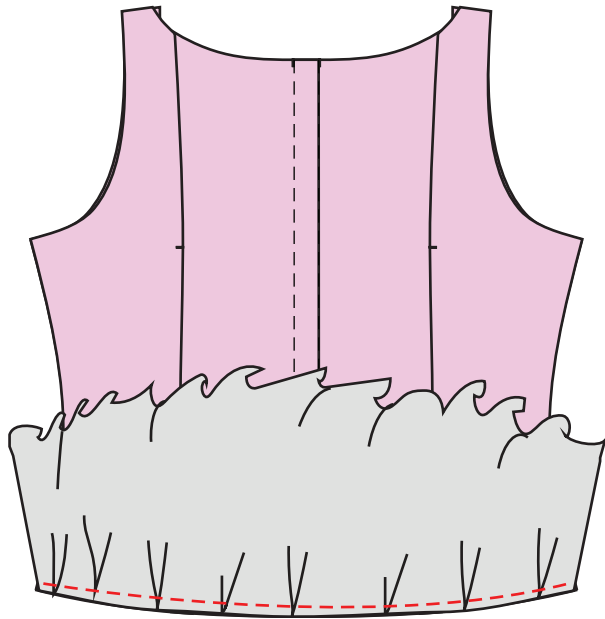
Step 11 - Repeat on the other side. After sewing both sides of the zipper, snip the rough edges of zip from top and bottom, switch to a regular presser foot. Turn the garment to right side and press to neaten the seam.



Step 12 - Now, take your front panel and set the hem by stitching the button placket from the bottom. Place the right front panel's placket on top of the left front panel's placket, match the notches, and make a straight stitch to lock it in place.

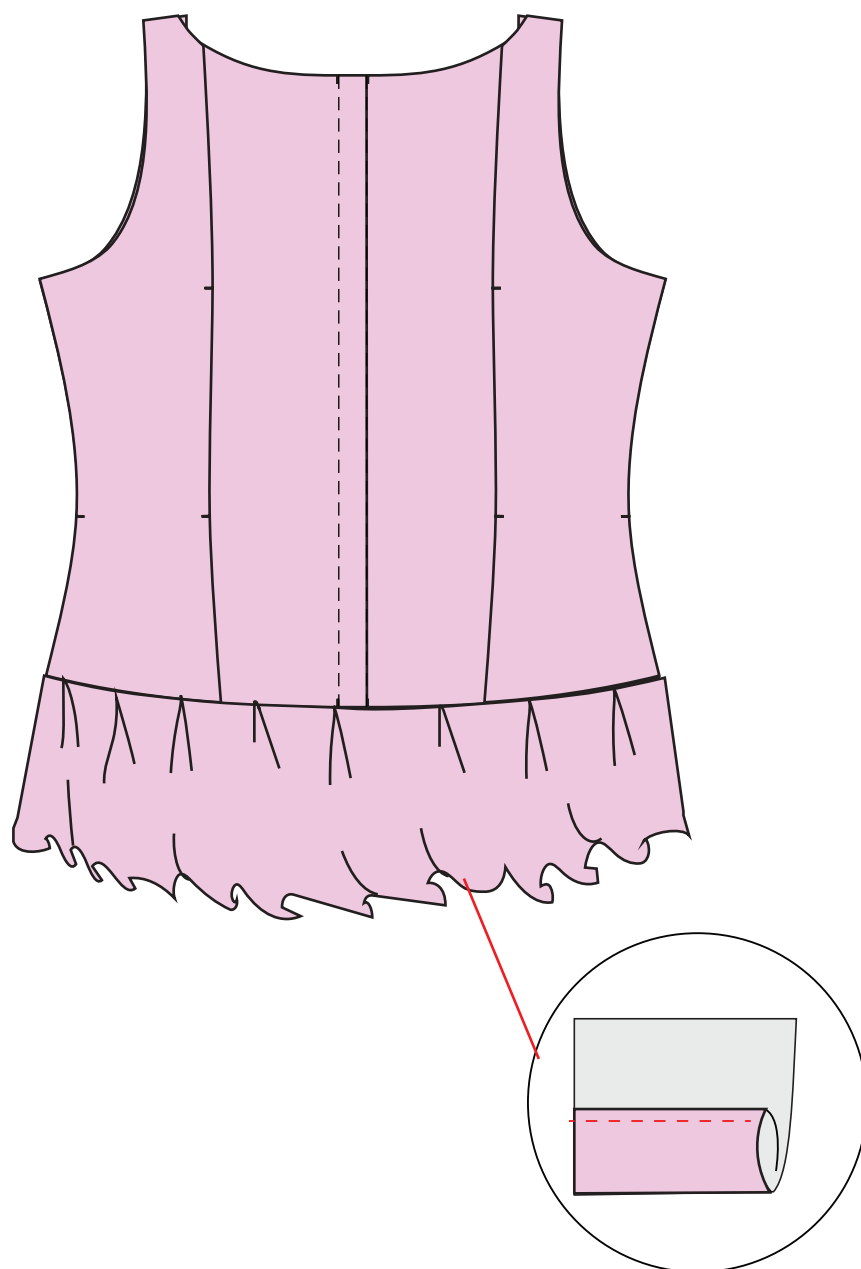


Step 13 - First, pin the gathered skirt lining to the dress at the hem, ensuring the right sides are facing each other. Then, pin the main fabric skirt on top of the skirt lining, making sure the wrong side of the lining is facing the right side of the main fabric skirt. Sew using a 1cm or 3/8" seam allowance.



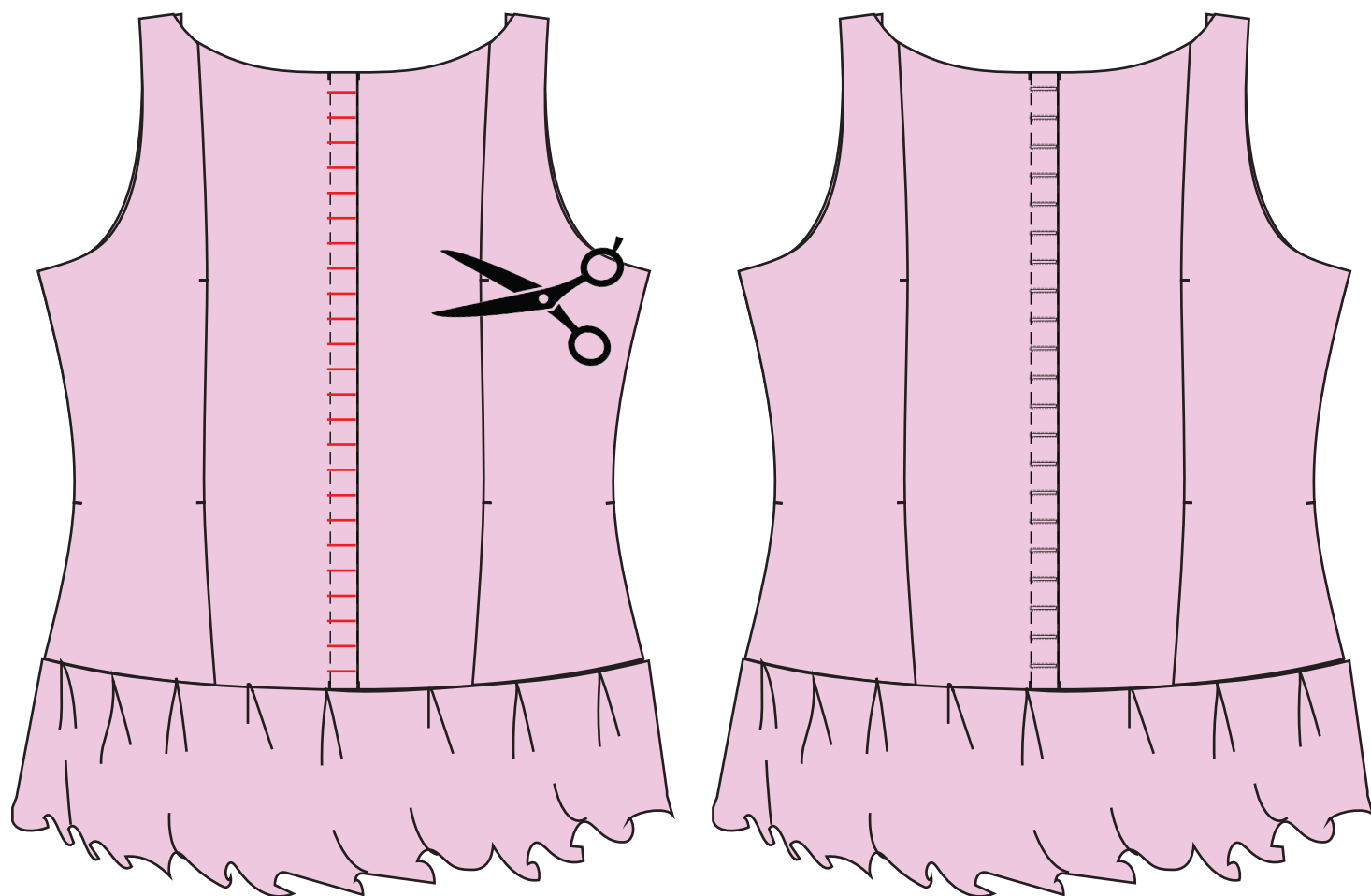
Step 14 - After joining the skirt,, finish the hem by folding it inwards towards the wrong side, first by about 0.5cm or 3/4", then again by 0.5cm or 3/4". This creates a 1cm fold. Make an edge stitch close to the edge of the folding to secure it.

NOTE: The main fabric and lining both will be finished individually/separately.



Step 15 - First mark horizontal lines with the specific measurement of your button, that how it gone to be long. After making line, cut the straight slit through with the help of scissor carefully (not to go further extra). Then we'll do the blanket stitch to fix the opening or you can install the button holes by sewing machine.

Button holes will be install at the right side front panel marked points (chalk down from pattern).

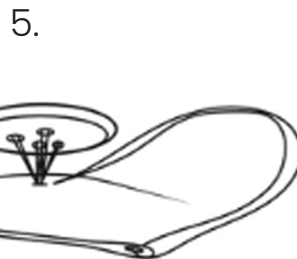
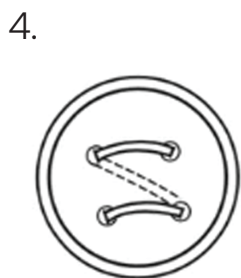
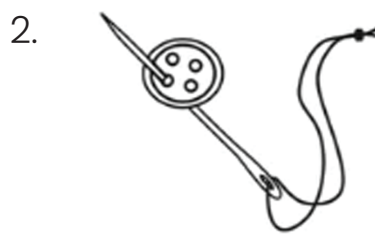


How to do blanket stitch.

1. First prick the needle to the fabric, starting from the corner of the opening.
 2. Then prick needle forward with the gap of 0.25cm in the upward direction.
 3. Pull the thread by overlap the remaining thread.
- That's how it the opening will be stitched.

Step 16 – Sewing the button.

1. Thread your needle by taking one edge of your thread through the eye of the needle then doubling your thread to tie a knot at the end of both threads.
2. Place the needle through one buttonhole and bring down to fabric.
3. Bring your thread through the hole to the right of your first stitch with the needle and bring through the fabric.
4. Next, bring your needle to the upper left hole and stitch back through to the upper right hole, making sure to keep your stitches loose.
Repeat step 3 and 4 until button seems secure (about 2 to 3 times).
5. When button is secure with your needle sandwiched between your button and fabric, wind the thread at the base 6 times.
6. Take your needle through the base where you wrapped your thread 3 times and add a simple knot for good measure, then cut your thread close to the base.



FINAL LOOK

