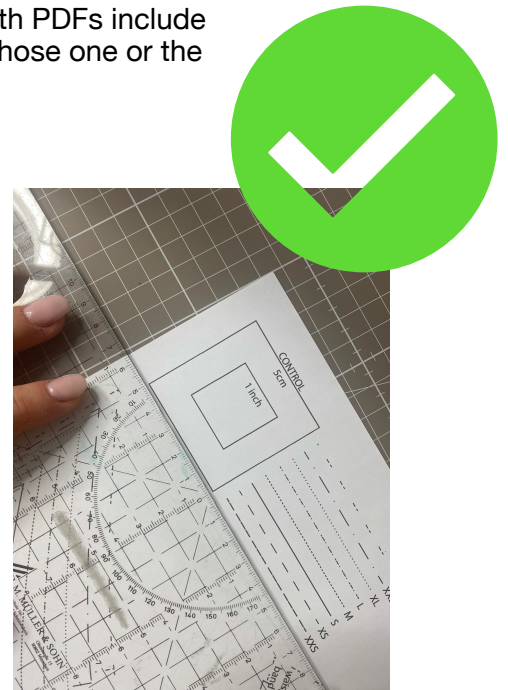
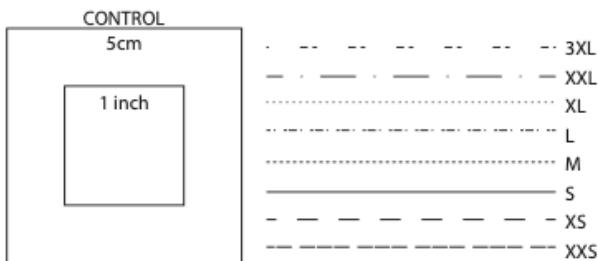




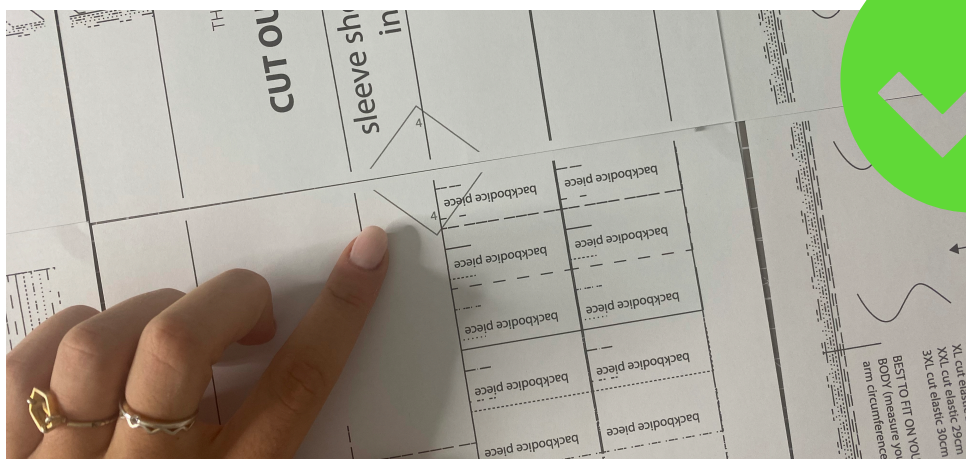
PRINTING & PUTTING THE PATTERN TOGETHER

Please choose the pattern in the paper size DINA4 or US LETTER. Both PDFs include the exact same pattern, it's just on a different size of paper. Please choose one or the other, you do not have to print out both PDFs.

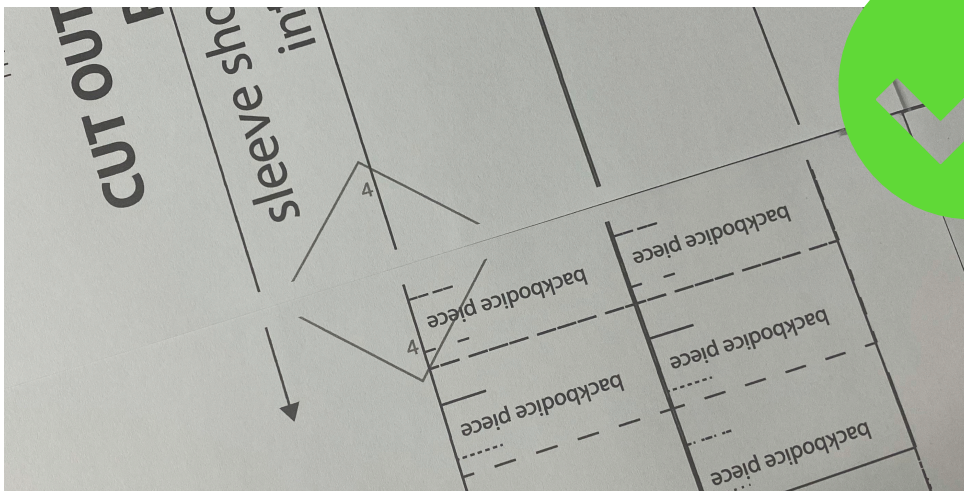
Please make sure to set the scale of your printer to 100%. If that is not the case, the pattern will *not be true to size* and end up not fitting. There is a square on page 1 (in most patterns, sometimes it's on a different page, so please refer to that page in your specific pattern) which must measure 5cm and 1 inch. Do a printing try out of that page and measure that square to be sure your pattern is scaled correctly.



Once your pages are printed out, tape the pages together edge to edge and line up the diamonds at the sides with the respective numbers and letters. Due to how the pattern PDF is made, the numbers and letters are not always ascending but every letter and number is used only once, making this process as easy as possible. Letters are used horizontally, numbers vertically. Once through with the alphabet, the letters start with AA, BB, CC, etc.



Keep in mind that all printers work a bit differently but usually there is a small area at the edges of the paper that the printer can't/won't print on. This is how *it's supposed to be!* As I try to put no essential information of the pattern on the corners of the pages, it's no problem. This, due to the nature of some patterns, is not always possible though. I am doing my best to provide you with the best patterns I can :)

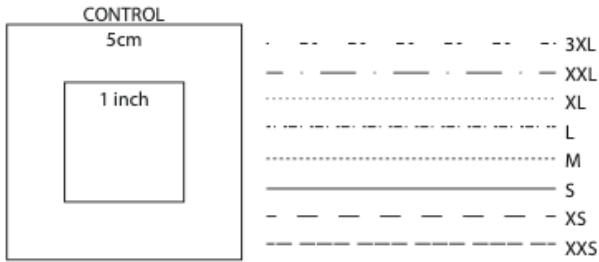


DO NOT cut anything off of the paper! If you cut off the edge where the printer couldn't print on, the pattern won't fit anymore!



Lay out the pages corner to corner, diamonds aligned, and tape the pages together. You should end up with a big sheet of taped together paper with your pattern on.





Refer to the line guide next to the control square to figure out your size. The sizes translate to the measurements in the size guide which is the last picture in every Etsy listing and in all of my sewing instructions at the end. Please refer to *these tables in your specific sewing instruction PDF*. This table which you can see here shows my usual sizes that I *mainly* use for my patterns. Please *double check* your size chart in the spots mentioned previously to make sure you chose your correct size. If they differ, *always refer to the size chart of your specific pattern*. This is mostly the case in patterns for corsets, jackets, etc.

SIZE GUIDE (ONLY AN EXAMPLE!)

SIZE/CM	32/XXS	34/XS	36/S	38/M	40/L	42/XL	44/XXL	46/3XL
BUST	78	82	86	90	94	98	102	106
WAIST	60	64	68	72	76	80	84	88
HIP	90	94	98	102	104	108	112	116

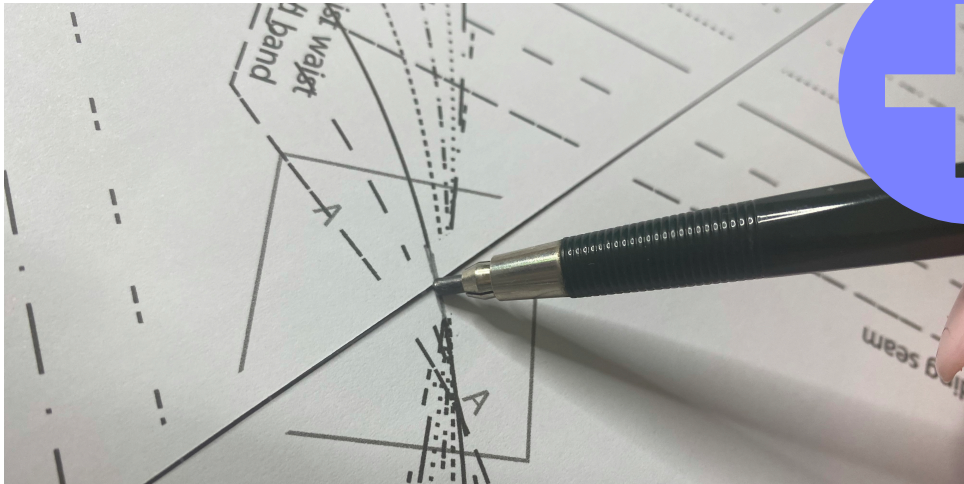
SIZE/IN	32/XXS	34/XS	36/S	38/M	40/L	42/XL	44/XXL	46/3XL
BUST	30,7	32,3	33,7	25,5	37	38,6	40,2	41,7
WAIST	23,6	25,125	26,75	28,3	30	31,5	33	34,65
HIP	35,4	37	38,5	40,1	40,9	42,5	44	45,6

Once you chose your size, go ahead and cut out your pattern pieces. In general, every pattern piece has all the needed information written on it. You can spot new pattern pieces by the arrow that indicates the grain line, the name of the pattern written in **BOLD** and the amount of times you need to cut out each specific piece.

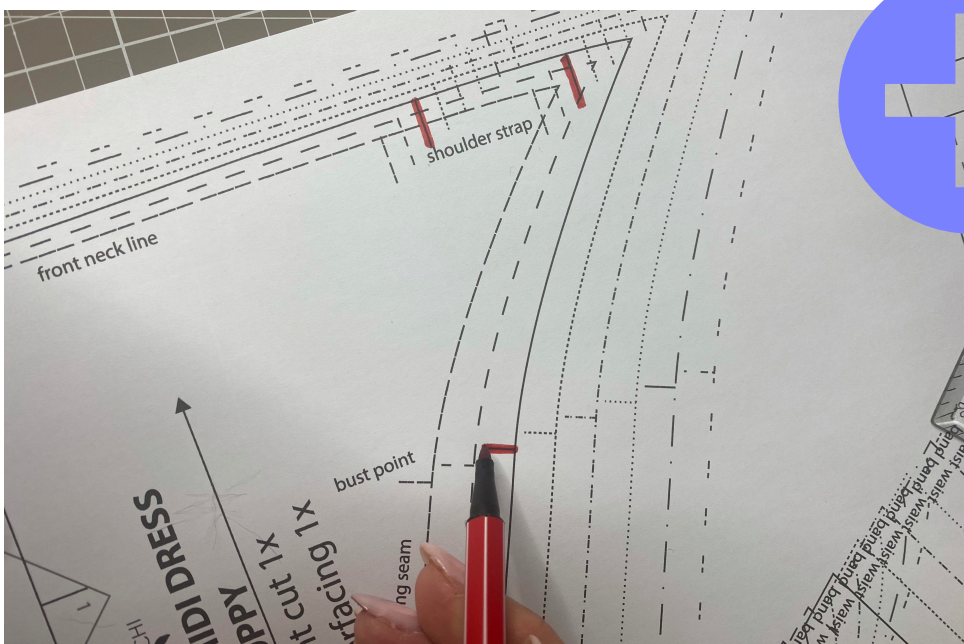




If you are unsure, you can always draw in the line of your pattern at the unprinted space. This usually is not needed as that's mostly only around 5mm.



I tend to mark the notches that are in the pattern for my specific size in a color to not miss them when cutting the pattern out of my fabric. Notches are very important! Always cut into the seam allowance to mark the placement of a notch. You'll need that later for sewing.



Please keep in mind that *all my patterns are without seam allowance!* You will need to add **1cm or 1/2 inch** (or whatever else you prefer) to all the edges of your pattern if not *specified otherwise* in the sewing instructions!

Make sure to share your creation under #thisiskachi and the specific # for your pattern. Don't forget to tag me @thisiskachi so I can see your creations!
Happy sewing!