



## DENIM SHORTS BONNIE

Thank you for your purchase! Please print out the pattern according to the included general information PDF.

This pattern does not include seam allowances. Please add your preferred seam allowance to your fabric before cutting it out. I suggest 1cm seam allowance.

I recommend to always sew a mockup before using your fashion fabric, in case of adjustments.

### PRINTING

Please print out all pages according to the general information PDF. Make sure to scale them to 100%. Tape the pages together edge to edge and line up the diamonds at the sides with the respective numbers and letters. Due to how the pattern PDF is made, the numbers and letters are not always ascending but every letter and number is used only once, making this process as easy as possible. Letters are used horizontally, numbers vertically. Once through with the alphabet, the letters start with AA, BB, CC, etc.

Keep in mind that all printers work a bit differently but usually there is a small area at the edges of the paper that the printer can't/won't print on. This is totally fine as I try to put no essential information of the pattern at the corners of the pages. This, due to the nature of some patterns, is not always possible though. I am doing my best to provide you with the best patterns I can :)

There is no need to cut off anything of the paper, even if there's nothing printed on. In fact, if you were to cut off that edge, the pattern won't fit anymore! So just print, tape and cut the complete pattern.

### MATERIALS (wash your fabric beforehand!)

- 100cm denim fashion fabric (I used 100% cotton denim, measured on a standard 140cm wide fabric)
- 30cm light weight cotton poplin for the pockets (I used 100% cotton poplin for this, measured on a standard 140cm wide fabric)
- 50cm interfacing (I used H180 Vlieseline for this)
- 140cm interfacing tape
- 30cm heavy weight interlining (I used 100% CO denim for this, measured on a standard 140cm wide fabric)
- 20cm zipper in a matching color
- metal details (I used a set of 2 push button outties)
- hooks and eye closure for pants
- matching denim thread
- sewing machine with straight stitch that can handle thicker fabrics
- overlock machine or domestic machine with zigzag/overlock stitch that can handle thicker fabrics

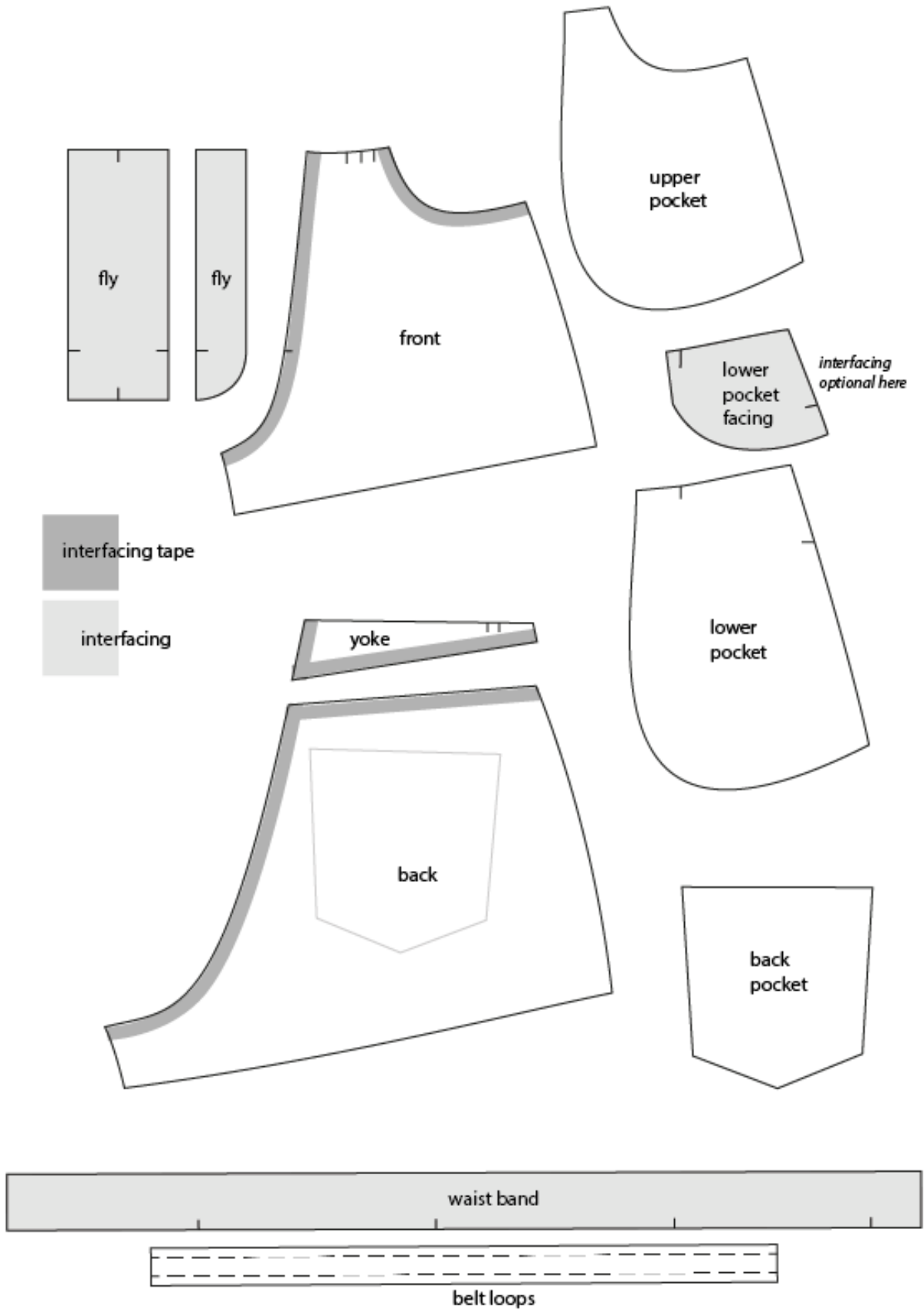
**MOCK UP IS A MUST!** As every fabric behaves differently and every body shape is unique.

*For visuals, please watch my step by step guide on my [YouTube channel](#).*

Cut out all pattern piece with your preferred seam allowance. I added 1cm all around my pattern pieces apart from the back pocket (I added 1.5cm seam allowance all around) and the belt loops which has 1cm already included. Mark all notches in the pattern by clipping into the seam allowance of your fabric.

Iron on interfacing and interfacing tape by following the interfacing guide.

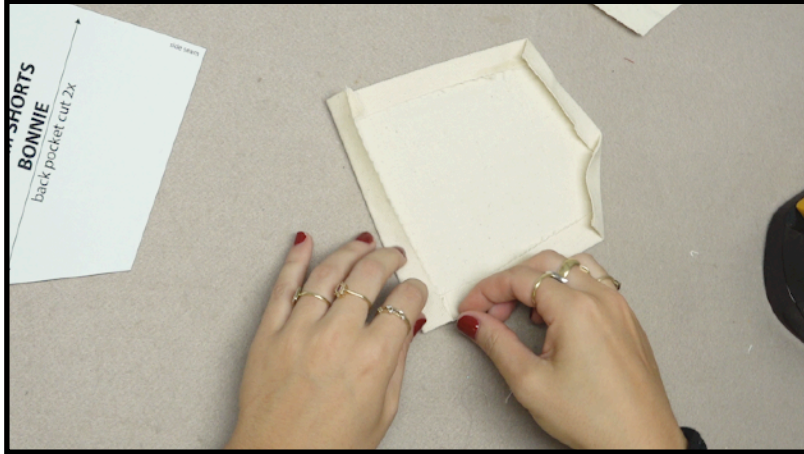
# INTERFACING GUIDE



## SEWING

### I. Pocket & back pant

1. Fold over the seam allowance of the back pocket (I ironed 1.5cm) with the upper edge getting ironed last (Picture 1).



Picture 1



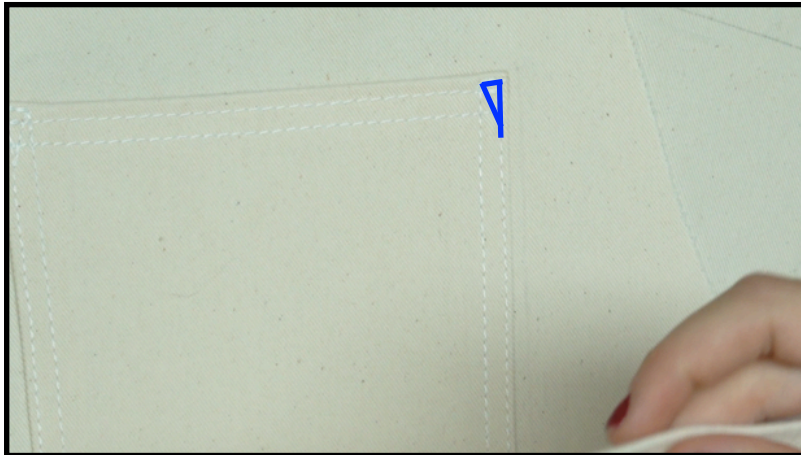
Picture 2

2. Tuck in the corners of the upper edge to prevent the raw edge from showing on the sides (Picture 2). Iron the corners again.
3. Add two rows of stitches (double top stitch) to the upper edge of the pocket (Picture 3).



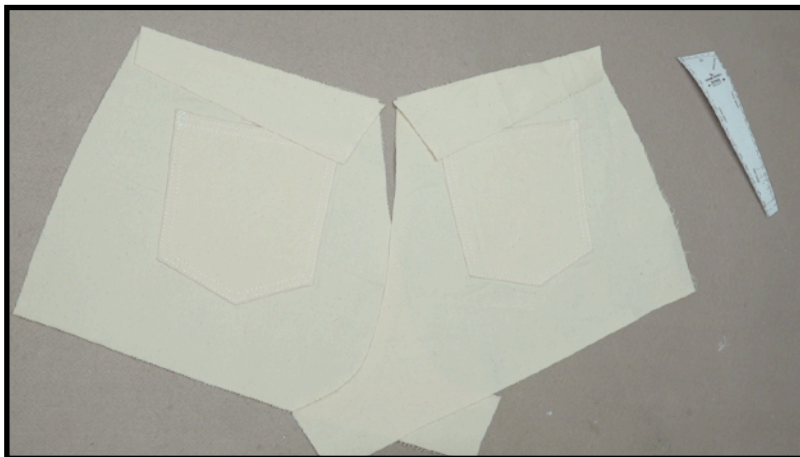
Picture 3

4. Copy out the placement of the back pockets that is marked on the pattern piece onto your fabric. Use a water soluble pen for that or transfer with pins.
5. Pin both pockets symmetrically to the pant legs. Sew with a double top stitch. Add the triangular bar tack on both upper corners of the pocket (Picture 4, blue).



Picture 4

6. Put right sides of back pants and yoke pieces together and close the yoke seam (Picture 5).



Picture 5

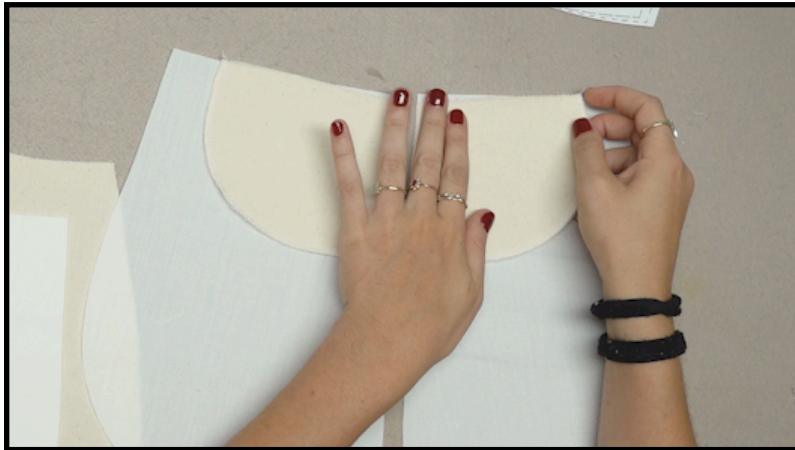


Picture 6

7. Overlock the seam allowance.
8. Iron the seam allowance into the yoke.
9. Close the cb seam by putting both back pants right sides together.
10. Overlock the seam.
11. Add a double top stitch to the cb seam and the yoke seam (Picture 6).

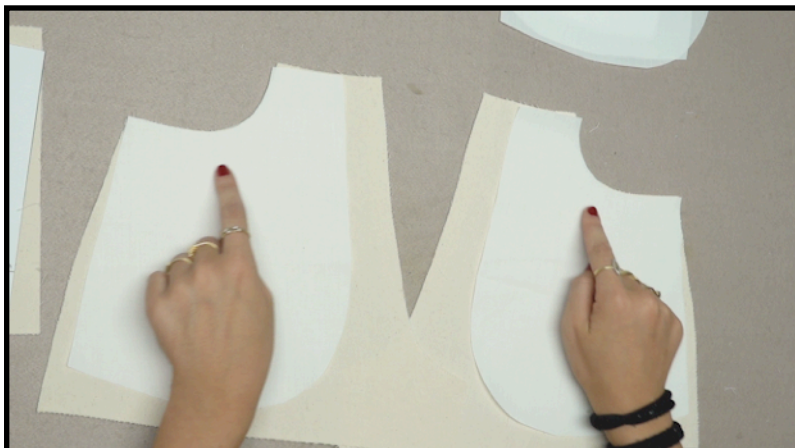
## II. Front pockets

1. Overlock the round edge of the lower pocket facing.
2. Align the lower pocket facing with the lower pockets by matching up the corresponding notches in the pocket (Picture 7).



Picture 7

3. Top stitch the lower pocket facing onto the lower pocket by sewing into the overlock seam.
4. Put right sides of the upper pocket and front pant together and close the round pocket opening seam (Picture 8).

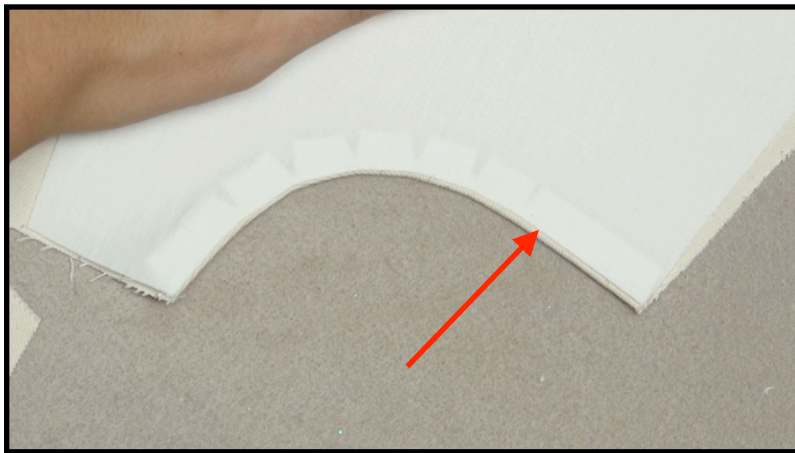


Picture 8

5. To be able to iron the seam better, cut into the seam allowance towards the stitching line every 1-2cm (Picture 9).
6. Turn everything right sides out and iron the pocket opening by making sure the ditch of the seam is only visible on the inside of the pants (Picture 10, ditch marked with red arrow).
7. Add a double top stitch to the pocket opening.



Picture 9

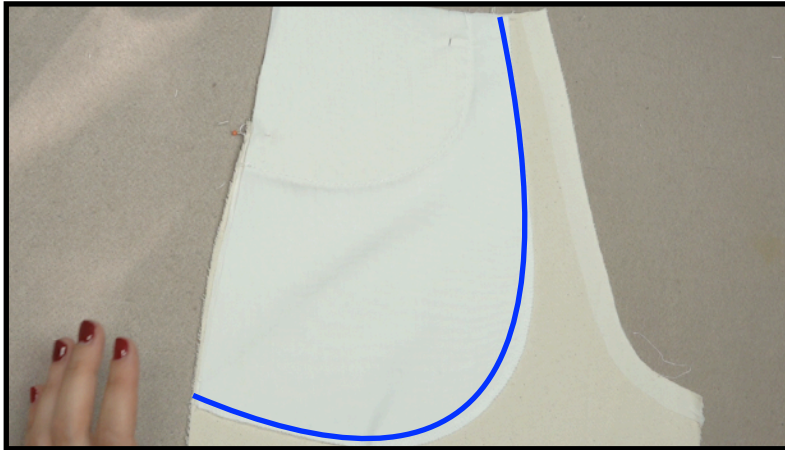


Picture 10



Picture 11

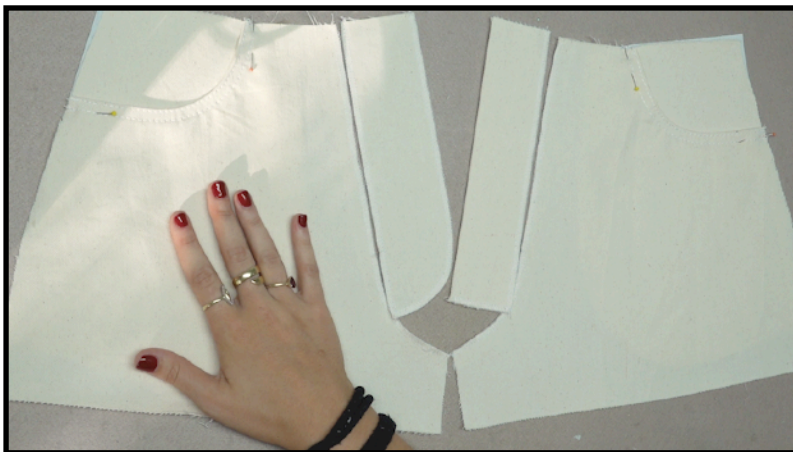
8. Put the front onto the lower pocket with the facing attached. Match up all notches and use pins to hold the pockets in place (Picture 11).
9. Turn the front around and only pin the pocket layers together.
10. Sew the pocket layers together and overlock (Picture 12, marked in blue).



Picture 12

III. Opening in the front

1. Iron the rectangular fly in half, matching up the fly notches on either side.
2. Overlock the raw edges of the rectangular fly and the round fly.
3. Overlock the cf of both front pieces.
4. In picture 13, you can see where the fly pieces will get attached.

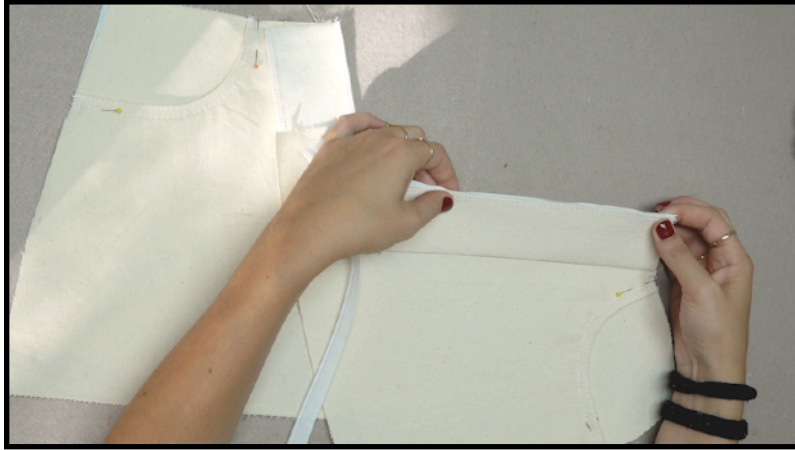


Picture 13



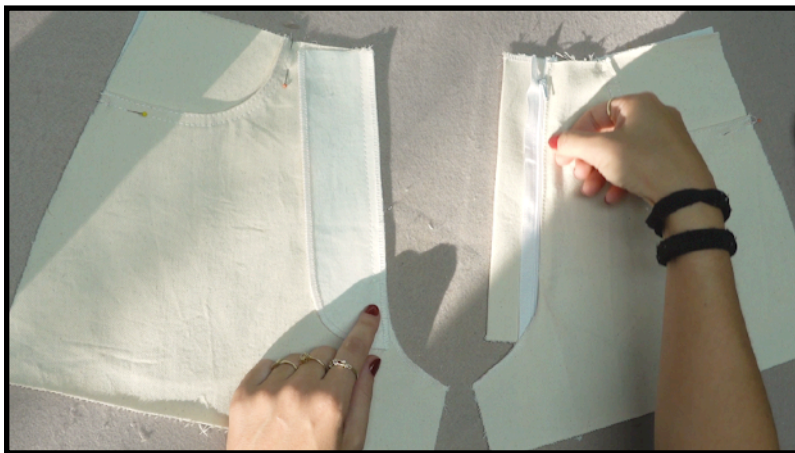
Picture 14

5. Put right sides of round fly and corresponding left pant right sides together and find the fly notch in both pieces. Sew down the cf from waist line to fly notch.
6. For the right side, open your zipper and pin it onto the cf of the right pant. Sew the zipper until the fly notch, using a one sided (or) zipper foot (Picture 14).
7. Put the rectangular fly piece onto the zipper at the cf and sew it until the fly notch as well (Picture 15).



Picture 15

8. Fold the rectangular fly piece over and add a row of top stitches right next to the zipper to fix the seam allowance in place (Picture 16).

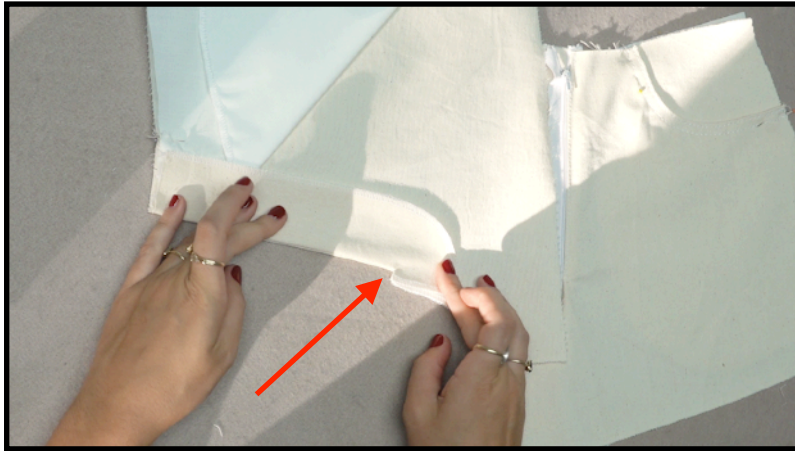


Picture 16



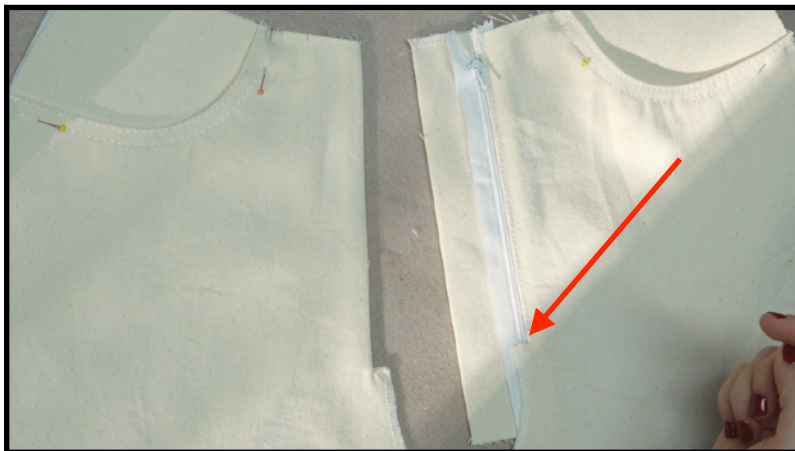
Picture 17

9. For the left side, cut towards the stitching line right at the fly notch (Picture 17).
10. Fold the round fly towards the wrong side until the notch. Peel out the seam allowance according to picture 18 (red arrow).



Picture 18

11. Iron the seam. Make sure the ditch of the seam is only visible on the wrong side of the pants.
12. Sew a double top stitch from waist to fly notch closely to the fold at the cf.
13. For the right side, also cut towards the stitching line at the fly notch to peel out the seam allowance and iron it flat for later (Picture 19).



Picture 19



Picture 20

14. Put the left pant right on top of the right one, covering the stitching line next to the zipper. Pin the layers together closely to the cf fold of the left pant (Picture 20).
15. Fold the left side to the right, grab the two fly pieces and turn the pants so that the rectangular fly piece faces up.
16. Use pins to keep the rectangular fly piece out of the way to expose the zipper band laying on top of the round fly piece (Picture 21).



Picture 21

17. Pin the zipper to the round fly piece and sew these two layer together (Picture 22).



Picture 22



Picture 23

18. Remove the pins that keep the rectangular piece out of the way.
19. Expose the open cf under the fly notch. Put right sides of both front pant legs together and close the cf until the notch (sew as far towards the notch as you can) (Picture 23).
20. Iron the cf seam.
21. Add a double top stitch to the cf (Picture 24).



Picture 24

22. Use the round fly pattern piece as a template for the top stitches (Picture 25). Make sure when stitching, to fold the rectangular fly piece out of the way.



Picture 25

23. Fold the rectangular fly piece back and add bar tacks to keep the front opening together and to give it more strength (Picture 26, blue markings).
24. Cut down the zipper.

#### IV. Putting back and front together

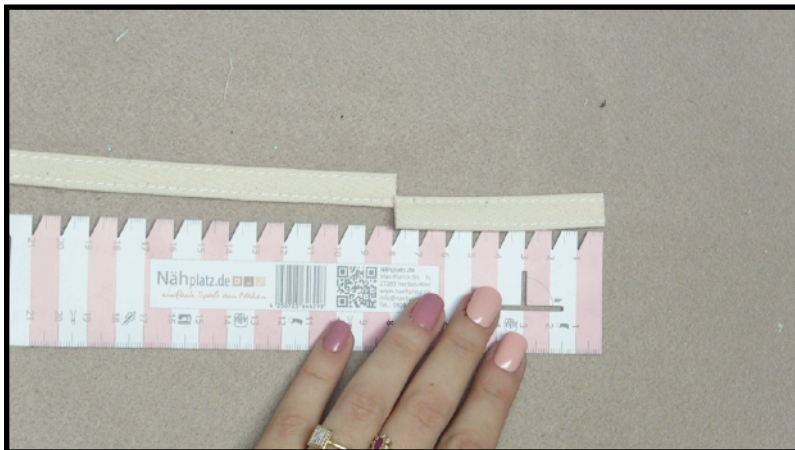
1. Put right sides of front and back together at the inner leg seam and sew.
2. Overlock the seam.
3. Iron the seam allowance towards the back and add a double top stitch.
4. Put right sides of front and back together at the side seams and sew (with the pockets!).
5. Overlock the seam.
6. Just iron the seam allowance to the back.
7. Turn the pants right sides out.



Picture 26

V. Waist band and belt loops

1. Overlock the long sides of the belt loop piece.
2. Iron the edges 1cm inwards.
3. Top stitch next to the edges on both sides.
4. Cut 5x8cm long pieces for the belt loops (Picture 27).



Picture 27



Picture 28

5. Place the belt loops at the indicated spots (belt loop notches) right sides onto the pants (two in the front, two in the back next to the side seams and one in the cb following the double top stitches) (Picture 28).
6. Bar tack the belt loops into place.
7. For the waist band, lay down the pattern pieces with the right side facing up and the notches facing towards you. The piece with the notch at 4cm on the left is the piece that will be visible in the end. The other one is your waist band facing.
8. Iron the seam allowance with the notches of the outer waist band into the piece.
9. Put right sides of both waist band pieces together and sew all remaining 3 sides together. Start stop sewing at the ironed fold (Picture 29).



Picture 29

10. Cut down the edges to turn over the waist band (Picture 30).



Picture 30

11. Use a pointy tool to pop out the edges.
12. Iron the waist band with the ditch of the seam only visible on the facing of the waist band.
13. Pin the facing of the waist band (the side without the ironed up seam allowance) onto the wrong side of the pants while matching up all notches (Picture 31). Sew the waist band to the pants.
14. Iron the seam allowance into the waist band.
15. Fold the waist band just over top of the seam and pin it in place (Picture 32).
16. Top stitch closely to the edges of the waist band all around to finish the waist band.
17. Fold the belt loops up and the raw edge towards the wrong side of the belt loops and pin it on top of the waist band.



Picture 31



Picture 32



Picture 33

18. Bar tack the belt loop in place (Picture 33, blue marking).
19. Add the outties of the push buttons to either side of the front pockets (Picture 34).
20. Add the hooks and eye closure to the waist band by hand (Picture 35).
21. Wash for a frayed hem look.



Picture 34



Picture 35

Make sure to share your creation under #thisiskachi and #denimshortsbonnie and tag me @thisiskachi.  
Happy sewing!

### SIZE GUIDE

SIZE/CM	32/XXS	34/XS	36/S	38/M	40/L	42/XL	44/XXL	46/3XL
BUST	78	82	86	90	94	98	102	106
WAIST	60	64	68	72	76	80	84	88
HIP	90	94	98	102	104	108	112	116

SIZE/IN	32/XXS	34/XS	36/S	38/M	40/L	42/XL	44/XXL	46/3XL
BUST	30,7	32,3	33,7	35,5	37	38,6	40,2	41,7
WAIST	23,6	25,125	26,75	28,3	30	31,5	33	34,65
HIP	35,4	37	38,5	40,1	40,9	42,5	44	45,6