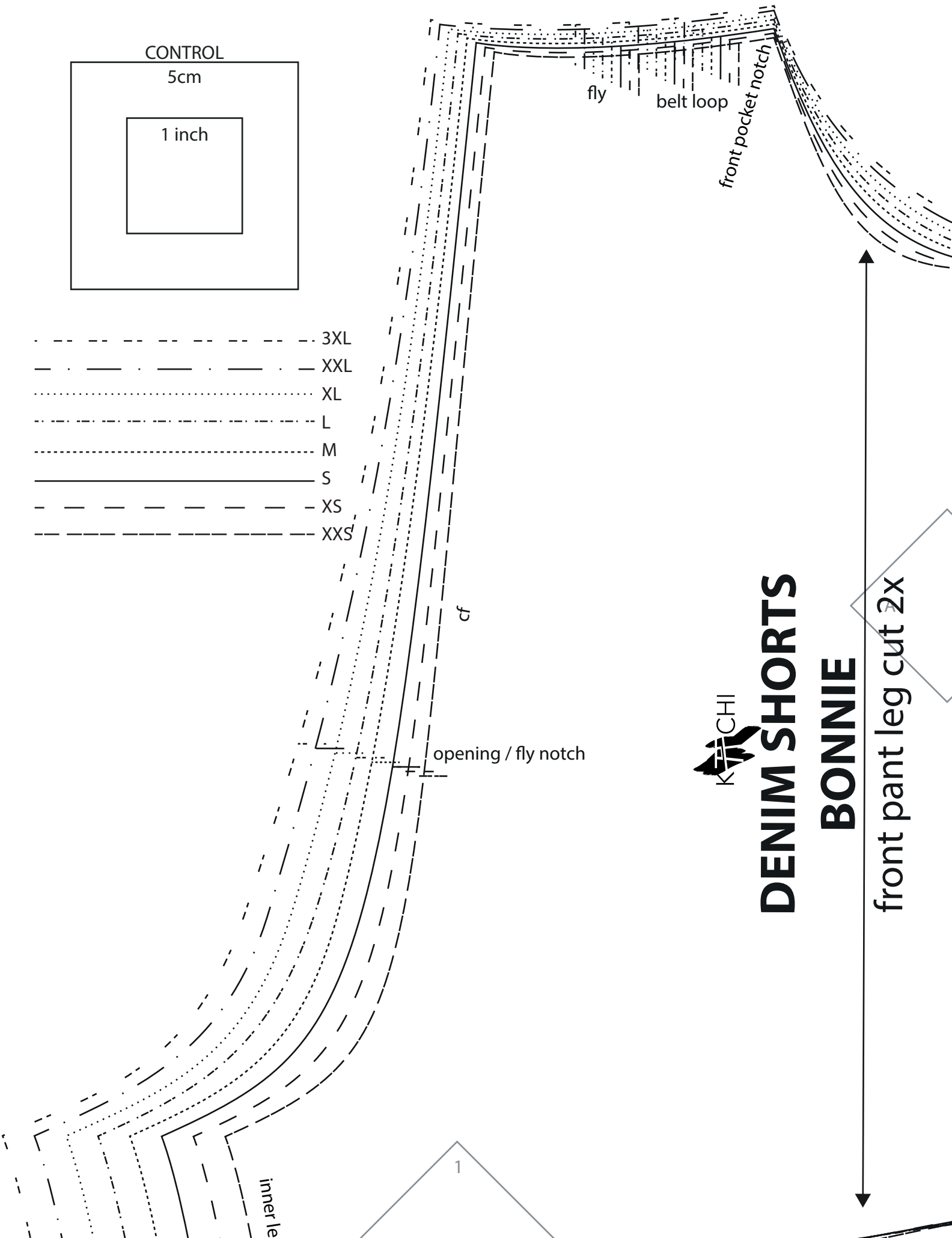


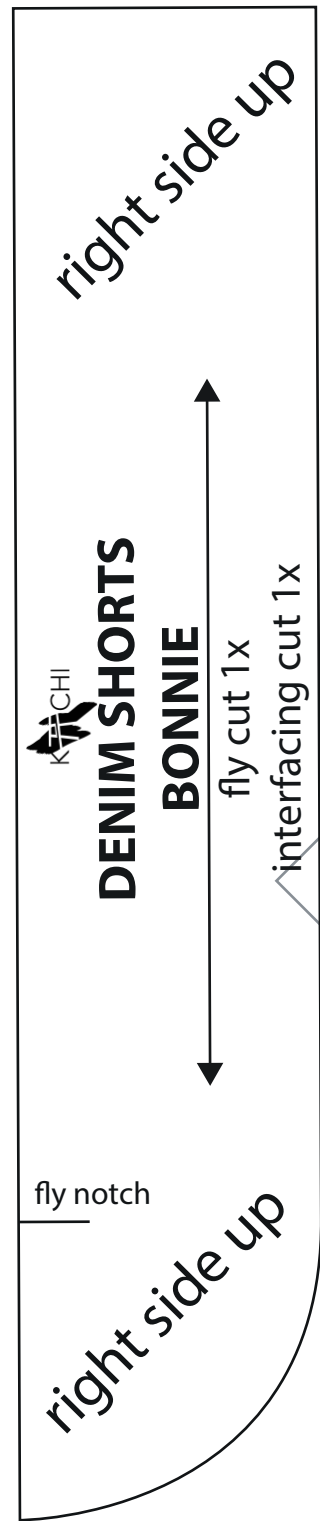
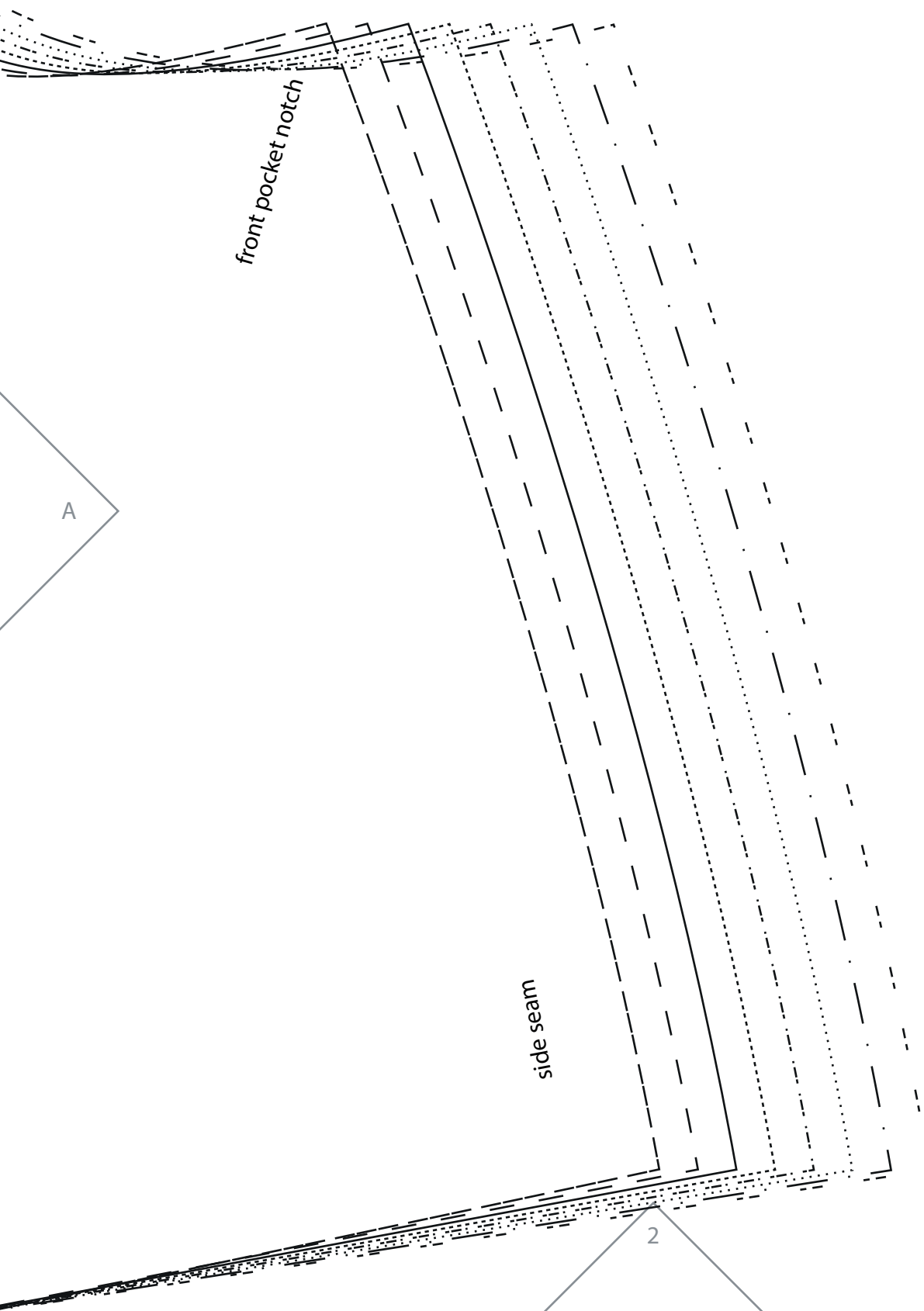
- 3XL
- - - - - XXL
- XL
- - - - - L
- M
- _____ S
- - - - - XS
- XXS



DENIM SHORTS

BONNIE

front pant leg cut 2x



DENIM SHORTS



BONNIE

back pant leg cut 2x



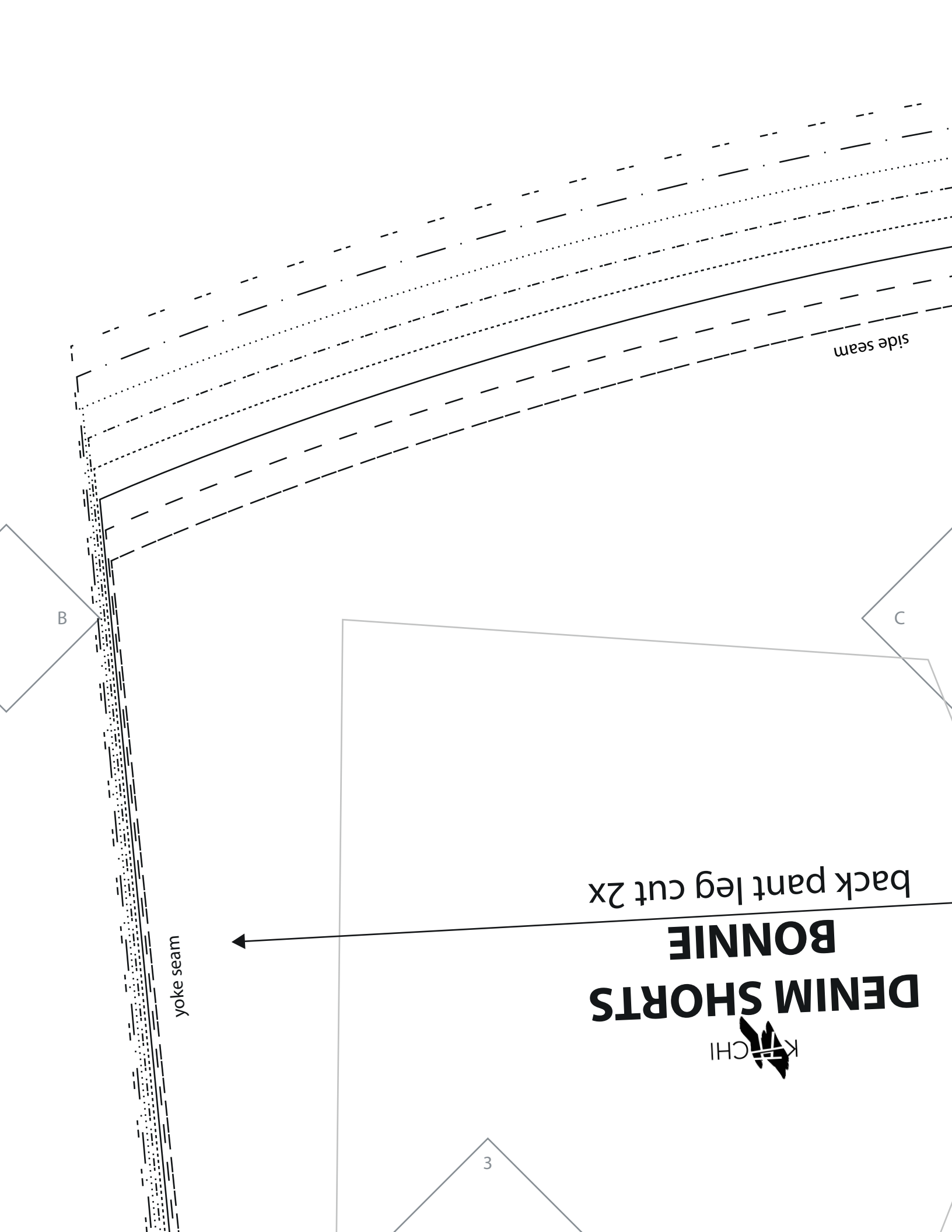
yoke seam

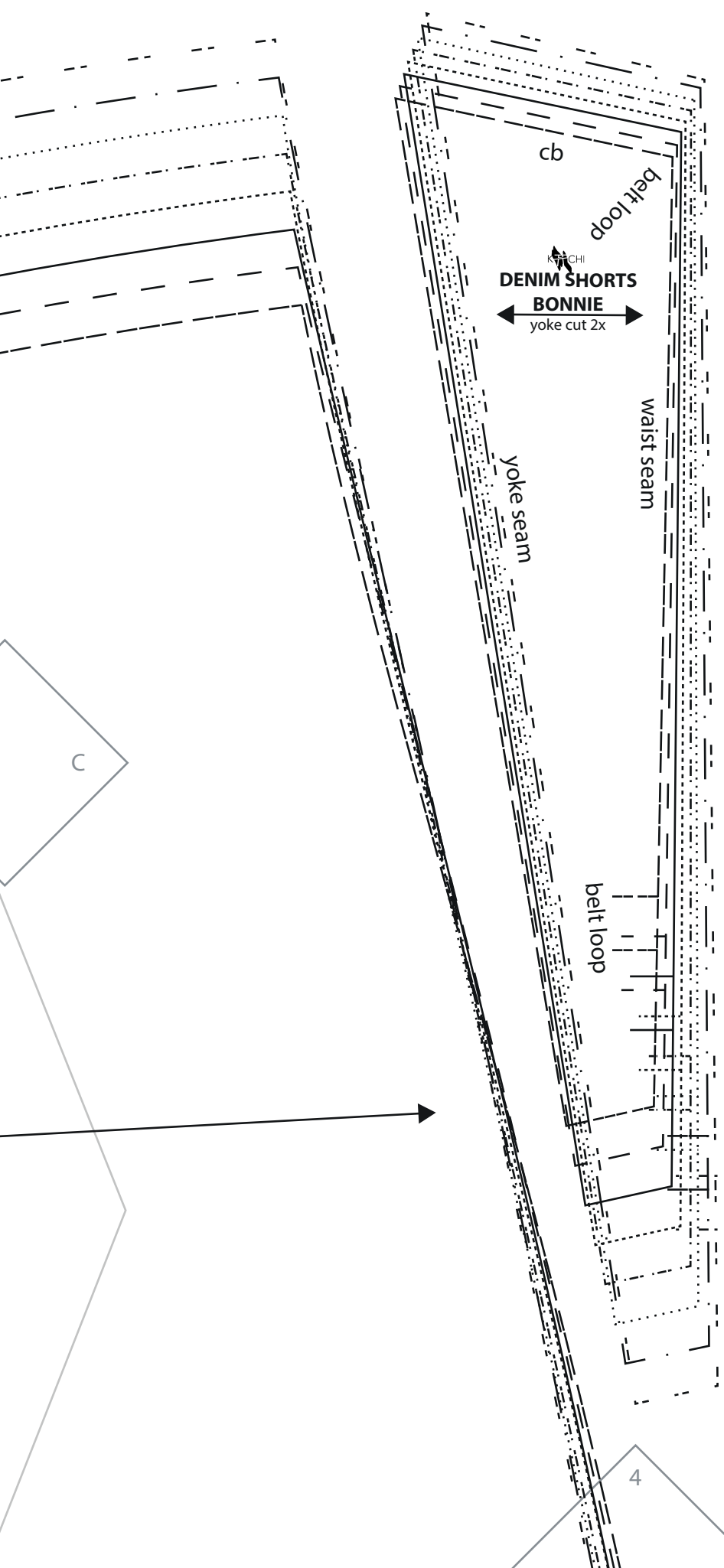
side seam

3

C

B





seam allowance included

fold line

fold line

seam allowance included

KITCHI
DENIM SHORTS
BONNIE
 belt loops cut 1x



g seam

front
pocket
notch

front
pocket
notch

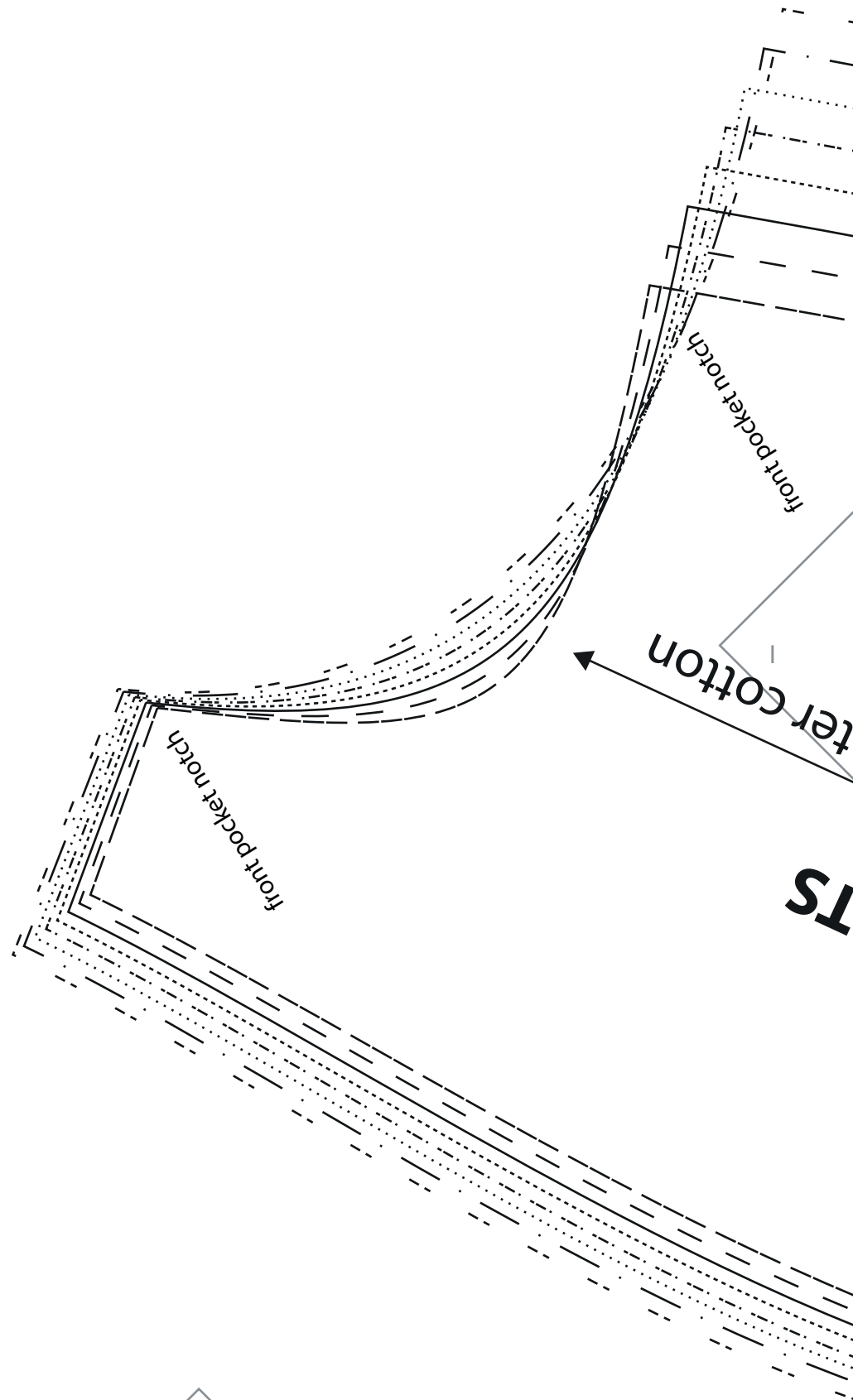
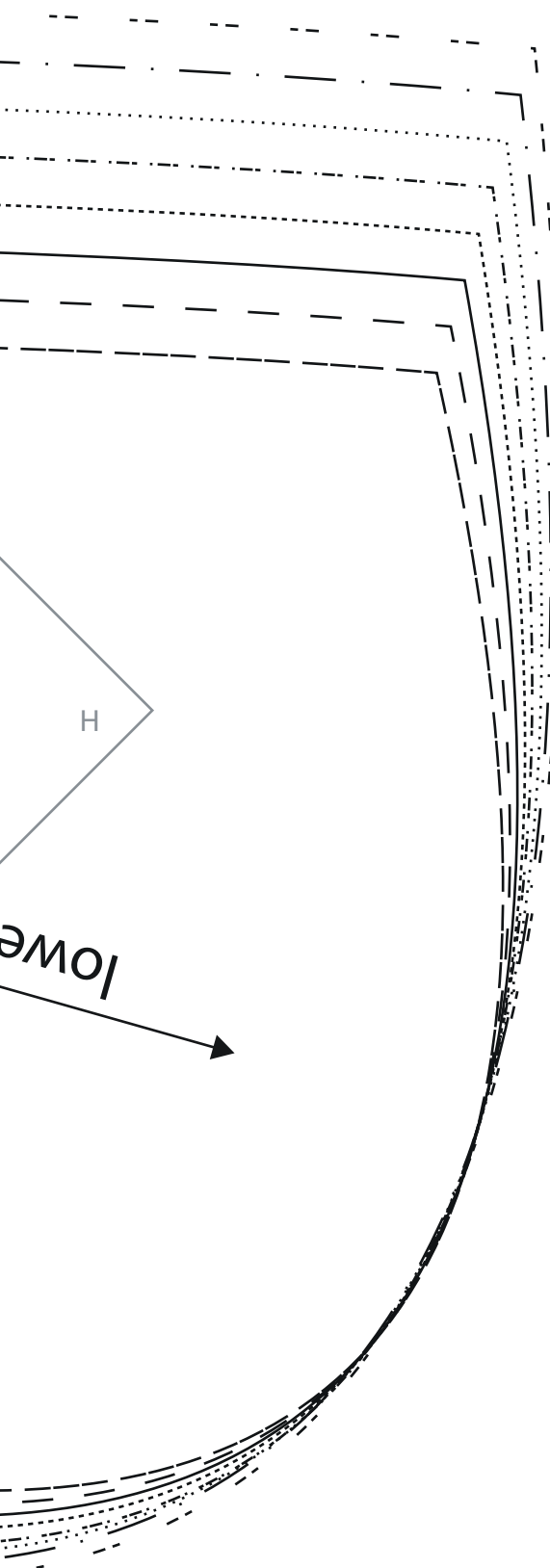
← front pocket cut 2x out of lighter cotton

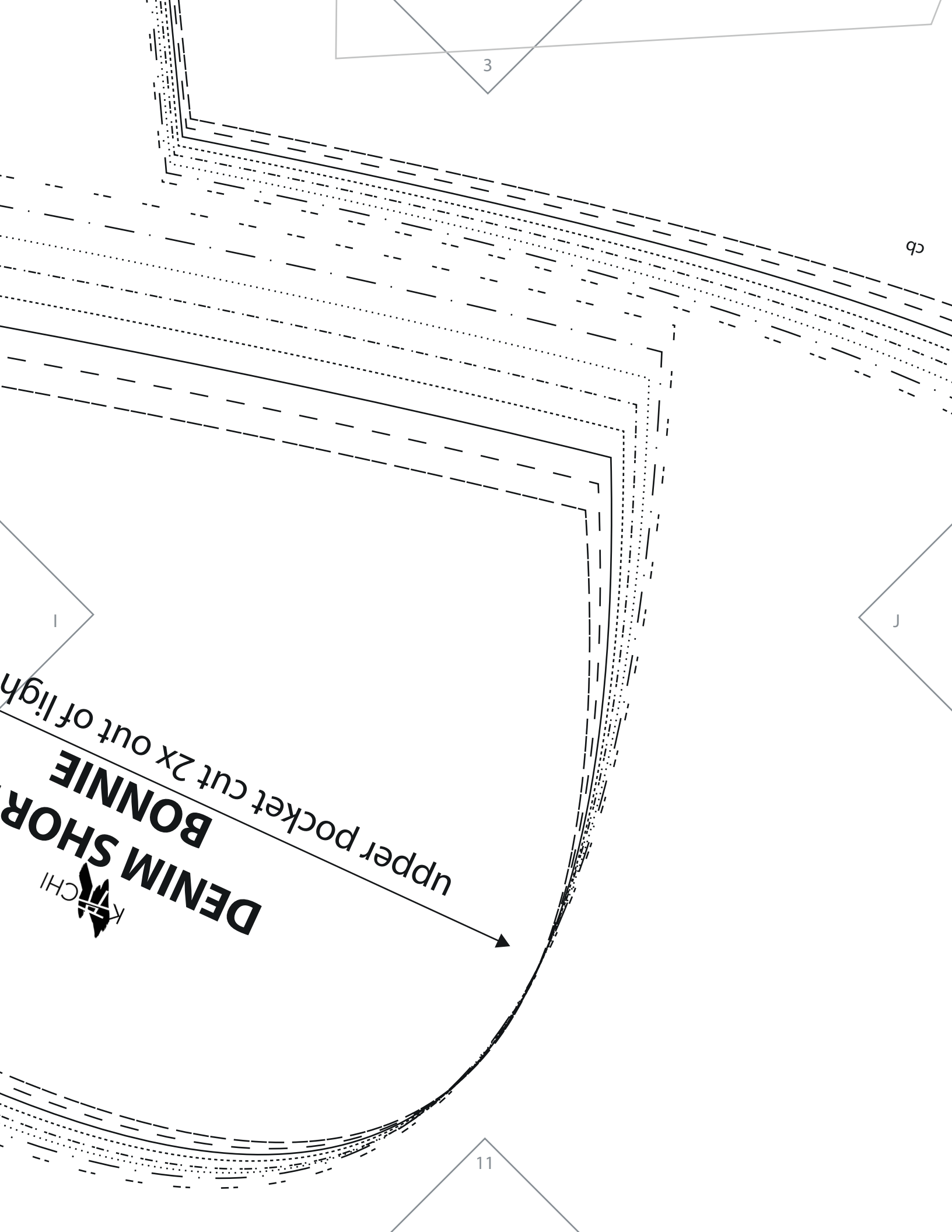
DENIM SHORTS BONNIE



H

9





3

cb

J

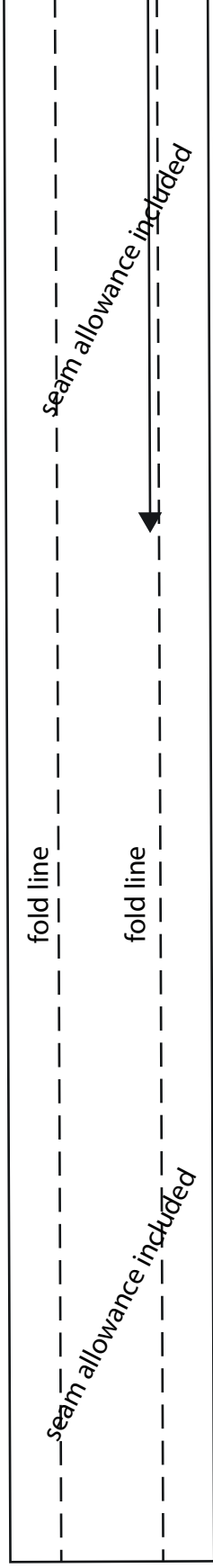
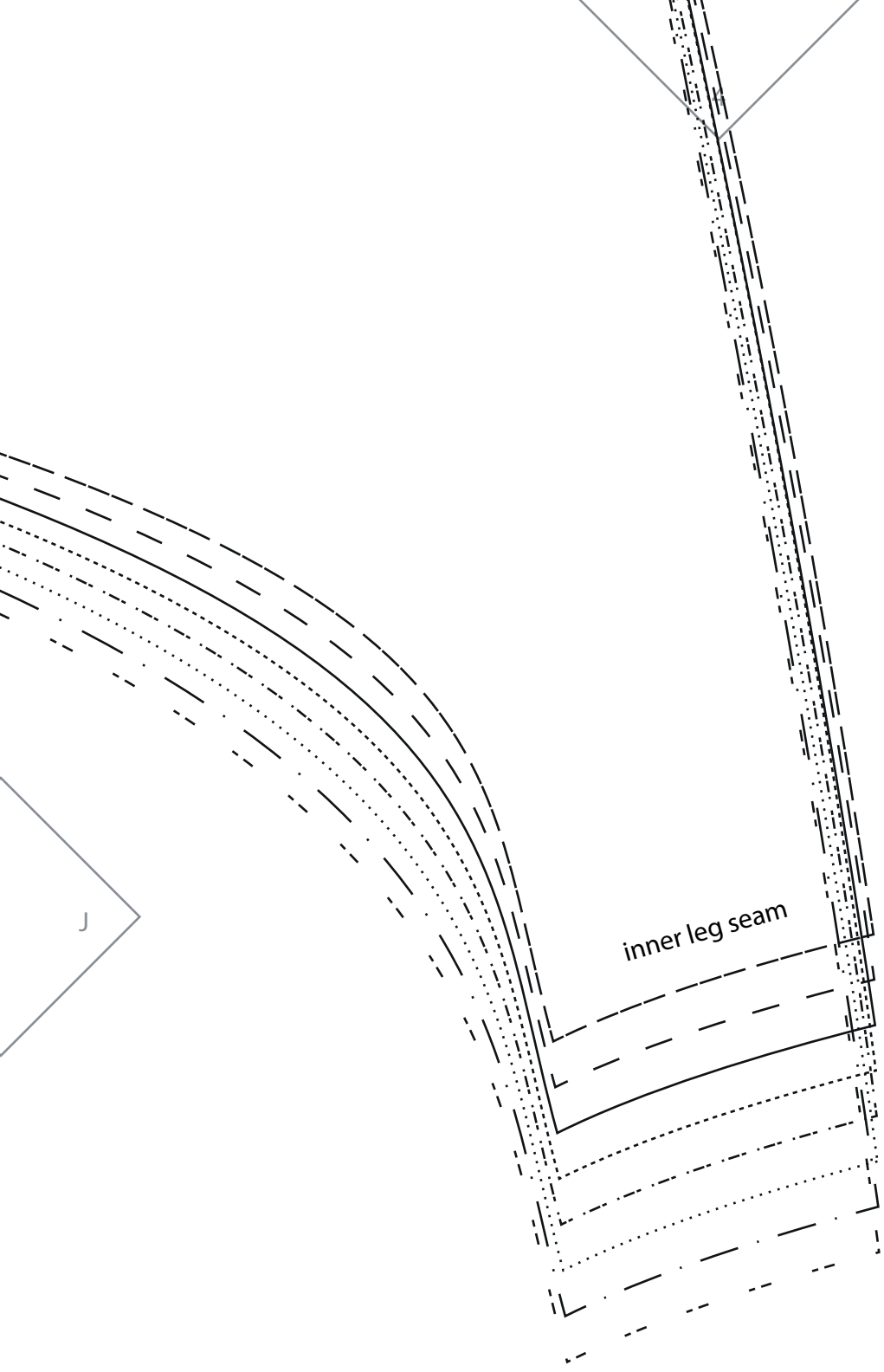
1

upper pocket cut 2x out of ligh

**DENIM SHOR
BONNIE**



11



9

zipper

zipper

zipper

zipper

zipper

zipper

zipper

zipper

fold

fly notch

fly notch

DENIM SHORTS



BONNIE

fly cut 1X

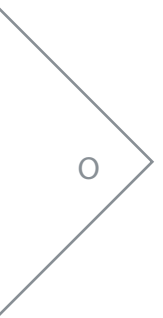
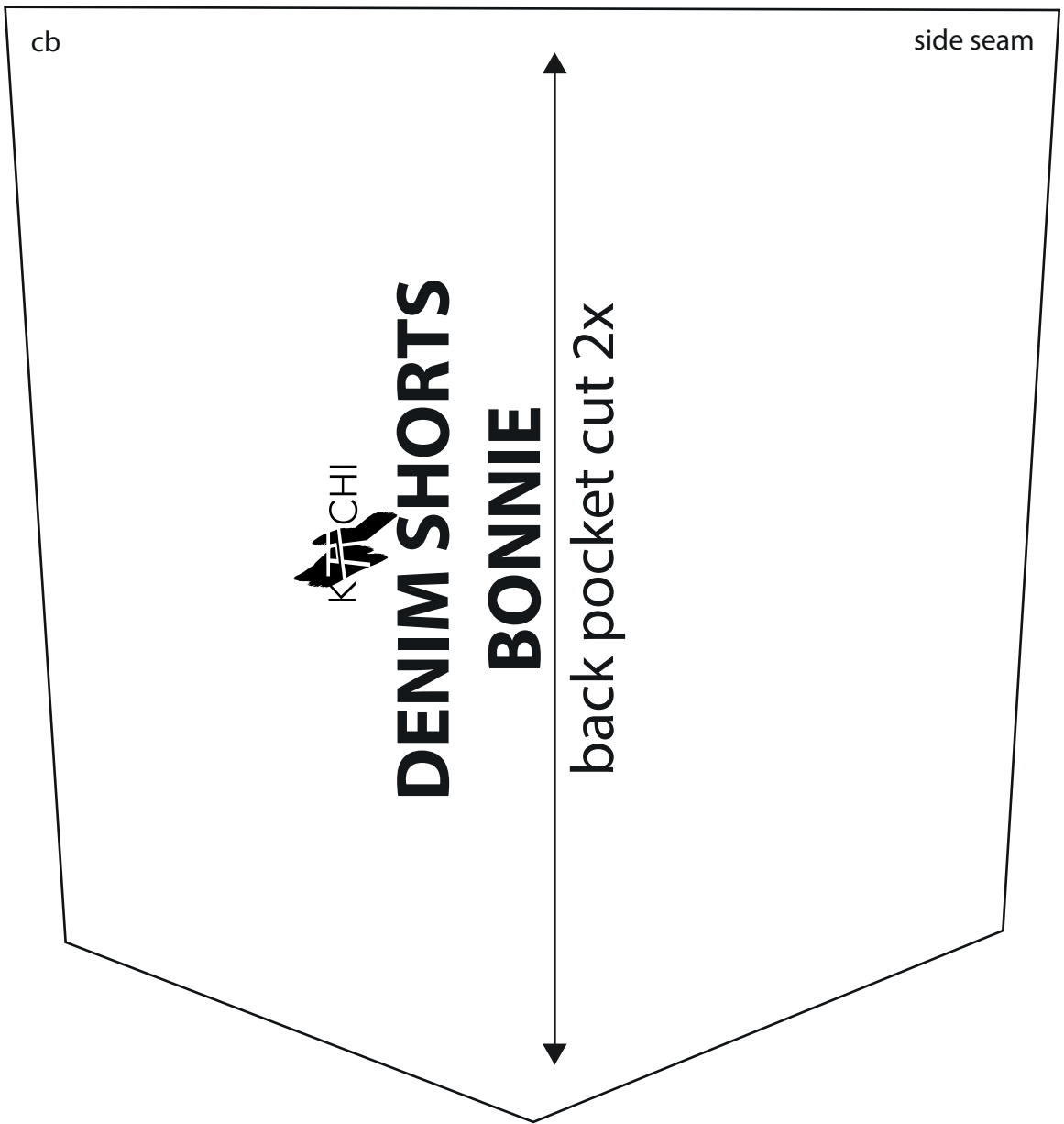
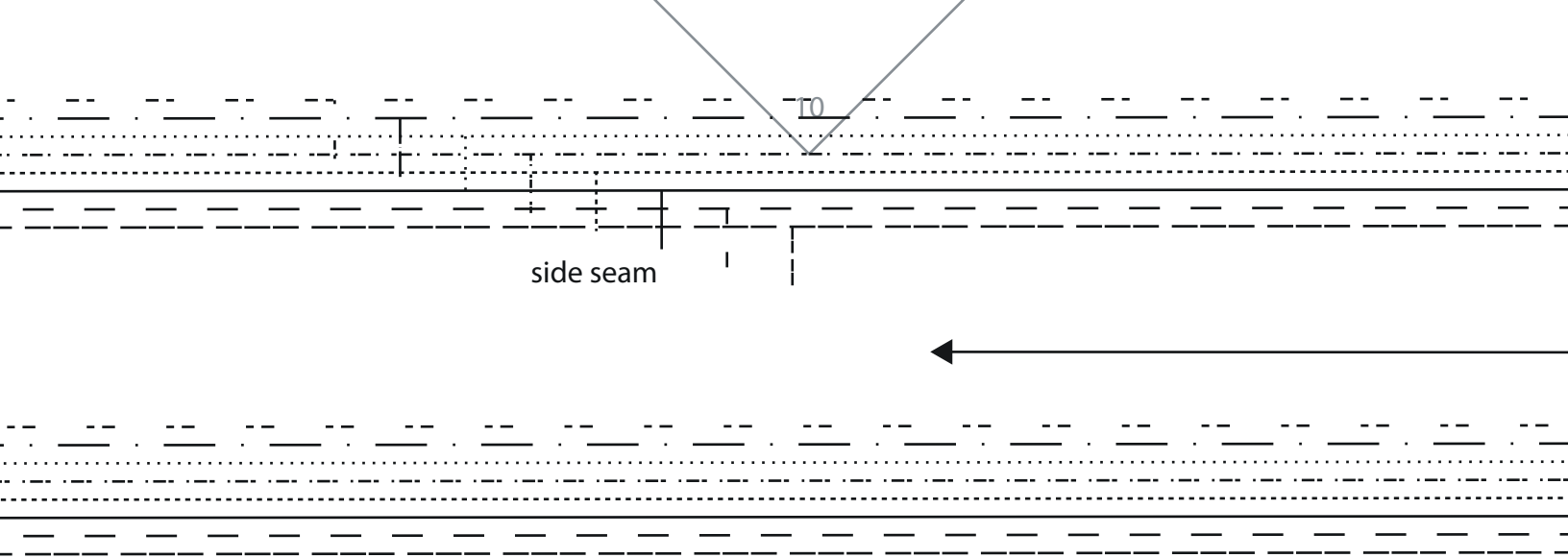
interfacing cut 1X



fold

17





KITCHI
**DENIM JEANS
BONNIE**

waist band cut 2x
interfacing 2x

cb

KITCHI
**DENIM SHORTS
BONNIE**

FACING

upper pocket cut 2x
optional: interfacing
cut 2x

front
pocket
notch

front
pocket
notch

