

# Home Printer Instructions

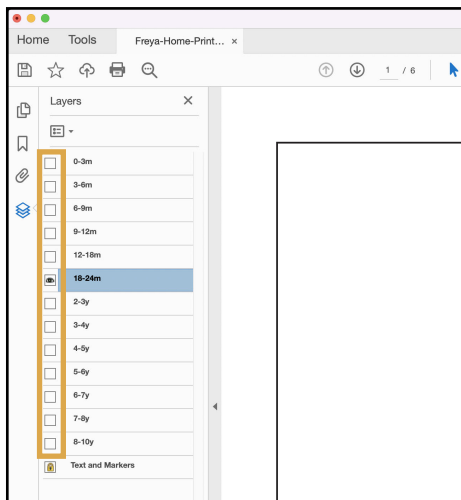
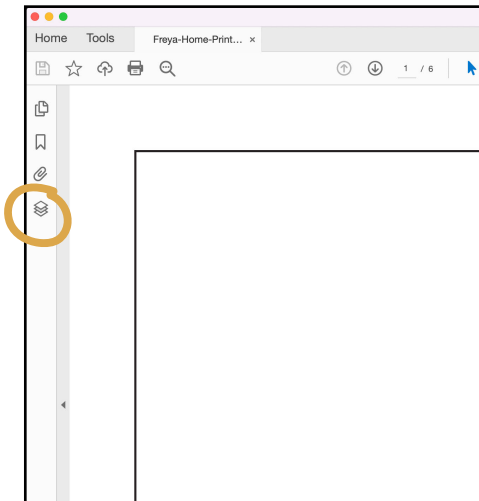
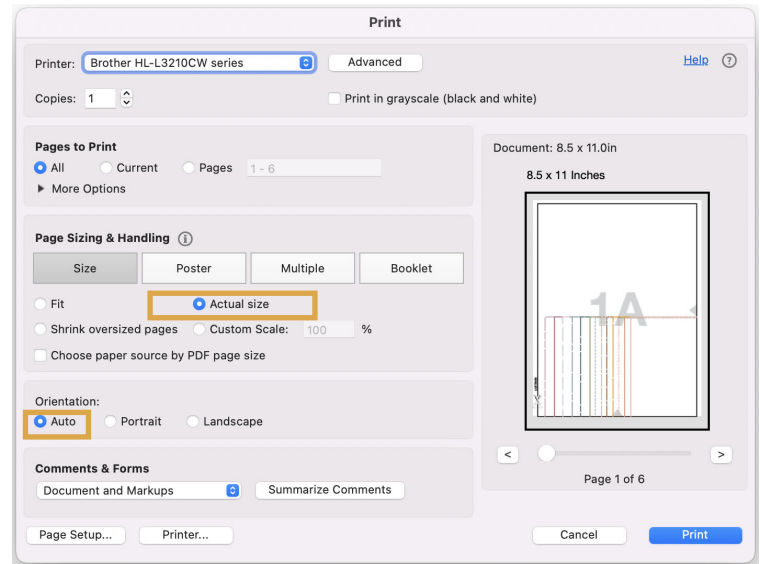
One of the most important steps in using a pdf pattern is ensuring you print your pattern without scaling. If your pattern scales when it prints, your finished garment will not fit correctly.

Different programs have slightly different printer settings. If you see these options in your settings, here's what you should do:

**Actual Size** should be selected  
or  
**Scaling** should be set to 100%

**Fit to Page** or **Scale to Fit** should be unselected

**Orientation** should be set to Auto or Portrait



## Print with Layers

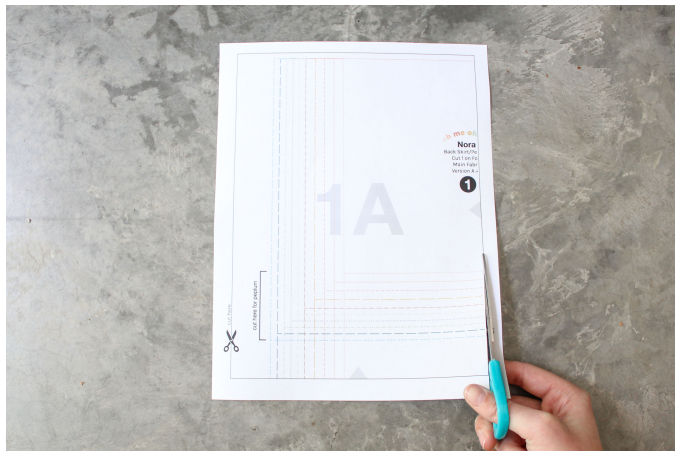
Printing with layers is totally optional. Layers allow you to print only the size you'll be sewing. If you'd like to do that here's the steps you'll want to take:

1. Open your pattern in Adobe Acrobat. If you don't have Acrobat you can download it for free off adobe's website here: <https://get.adobe.com/reader/?promoid=TTGWL47M>
2. Click the layers icon.
3. Deselect all sizes except your size and the text layer.
4. Hit Print and you're done!

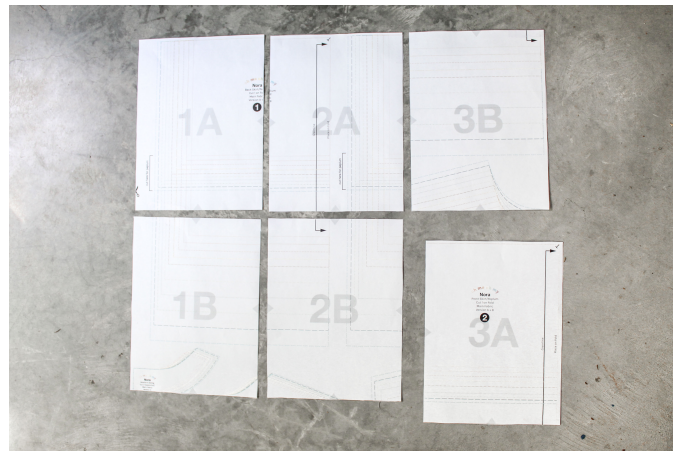
**Don't forget to measure the test square** to double check if it printed correctly!

# Pattern Assembly

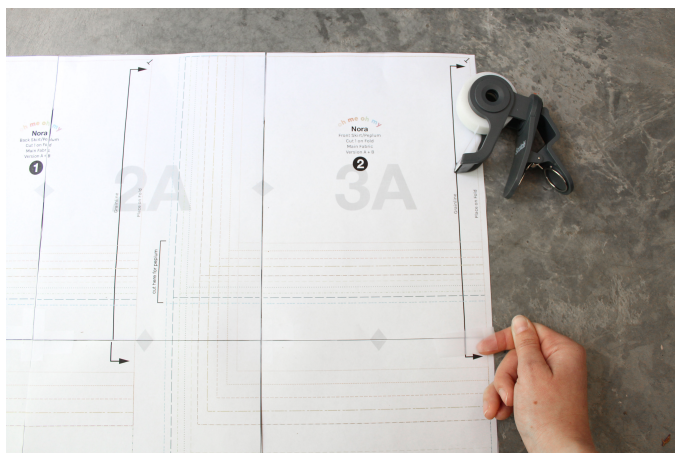
Print at home patterns take a bit of assembly. You'll need some paper scissors and tape.



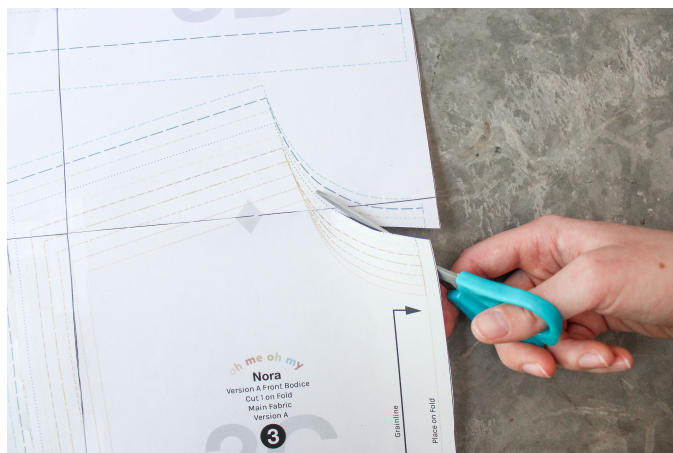
**1.** Cut along the black border to remove the margins.



**2.** Lay out the pages according to the gray numbers where 1A, 2A, 3A,... are side by side in a row and 1B, 2B, 3B,... are side by side in a row right beneath your row of "A" pages and so on. The little gray triangles on the edges are there to help you align the pages. (Use the pattern layout to check your work and see how the pattern will look all put together.)



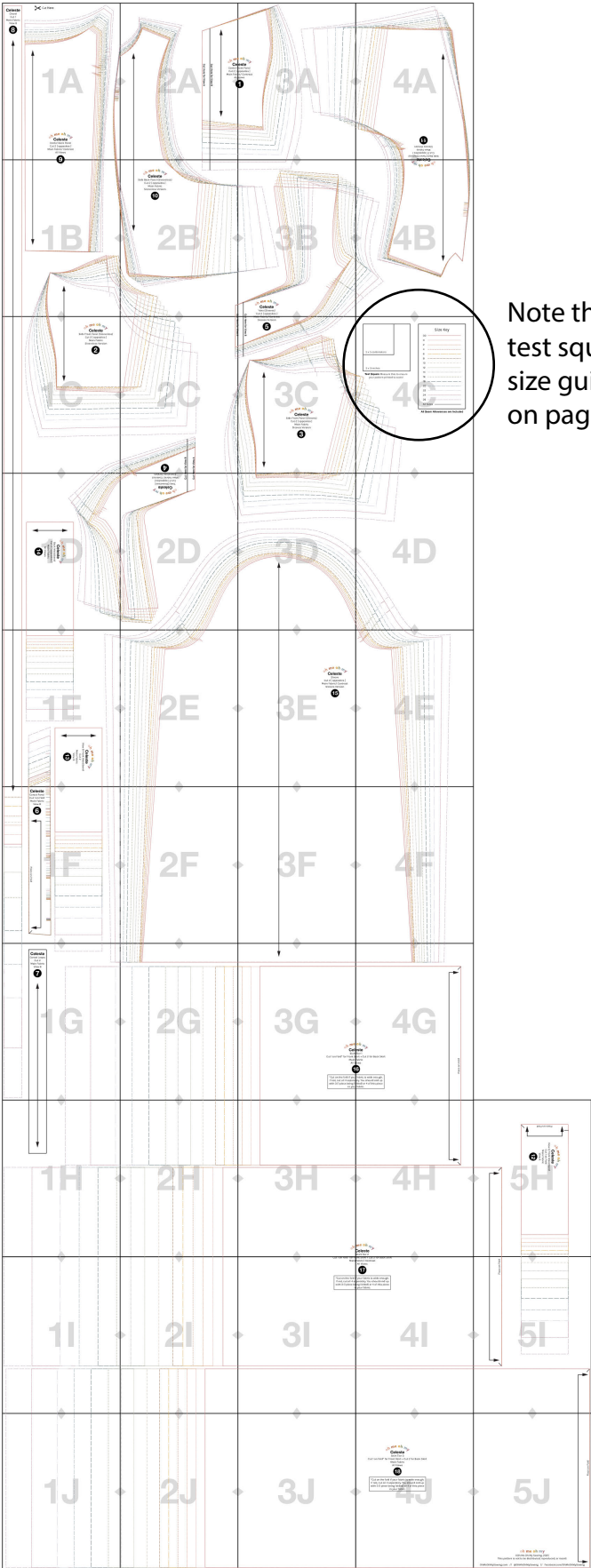
**3.** Tape together the pages.



**4.** Cut out all the pattern pieces along the colored line of your chosen size.

The instructions file includes more tips on reading your pattern pieces and cutting them out of your fabric.

# Pattern Layout

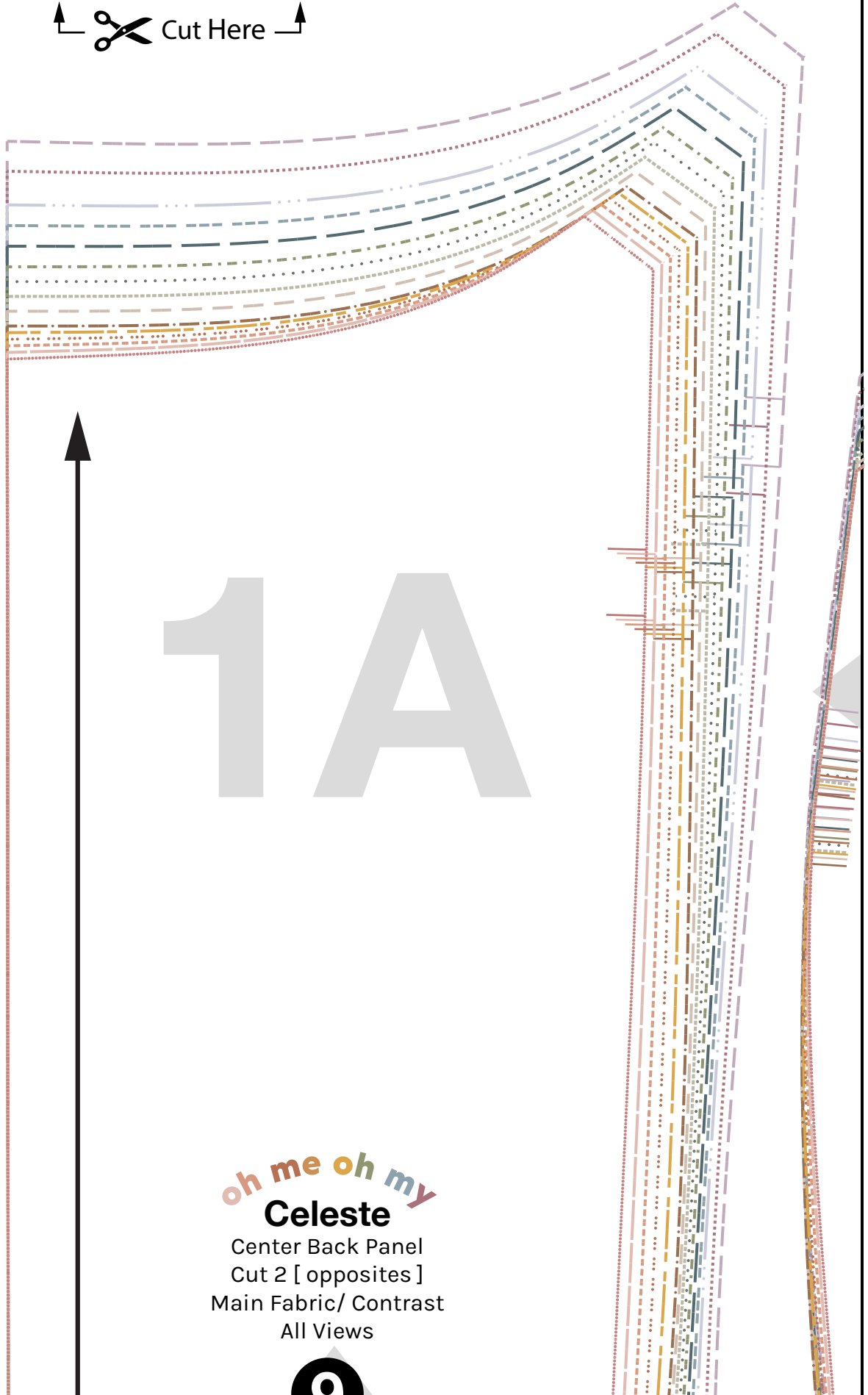
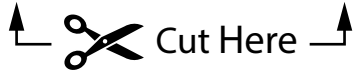


Note that the test square and size guide are on page 4C!

**Celeste**

Chord  
Cut 1  
Main Fabric  
View B

8

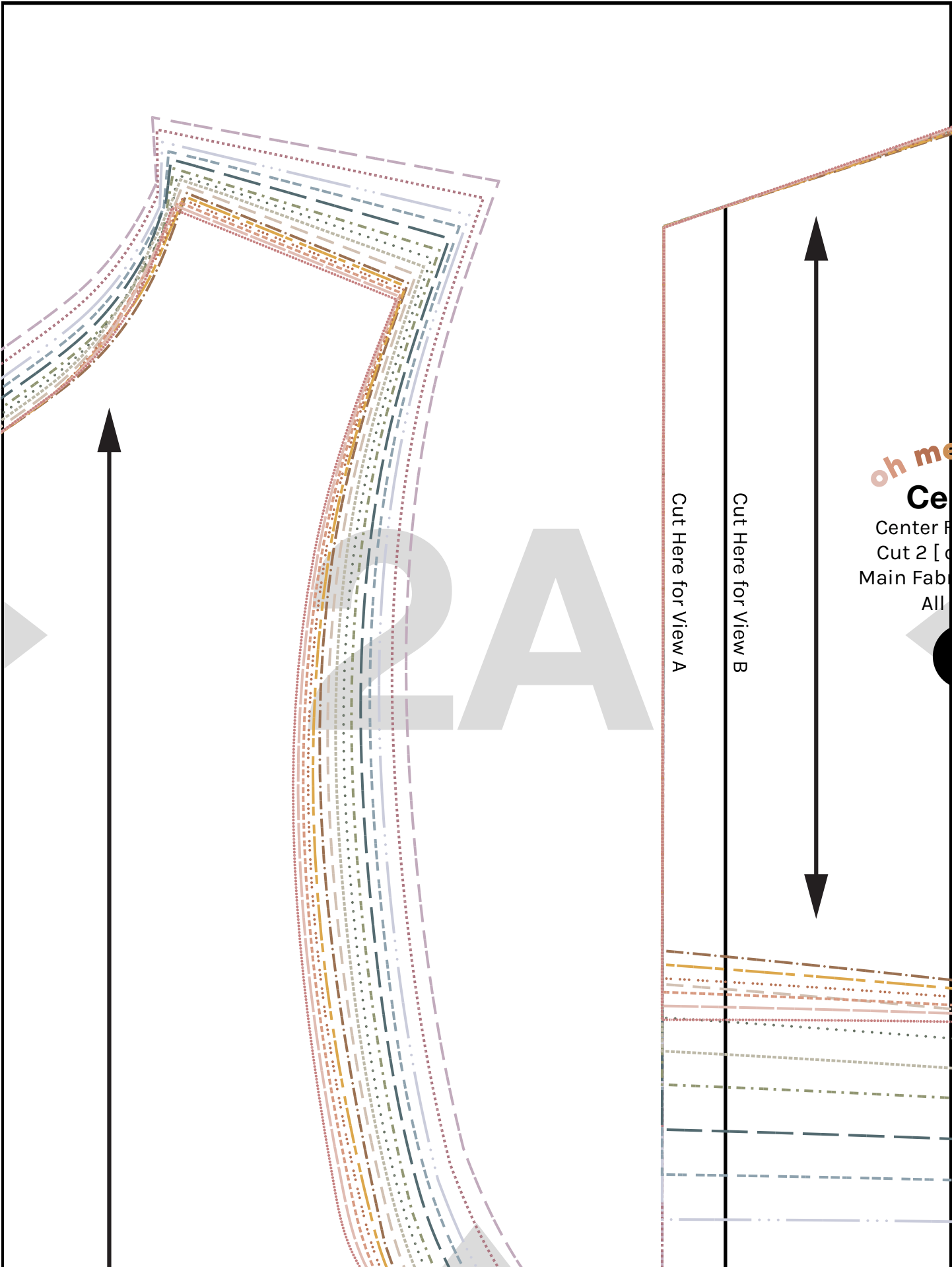


1A

oh me oh my  
**Celeste**

Center Back Panel  
Cut 2 [ opposites ]  
Main Fabric/ Contrast  
All Views

9



oh me  
Ce  
Center P  
Cut 2 [ d  
Main Fab  
All

Cut Here for View A

Cut Here for View B

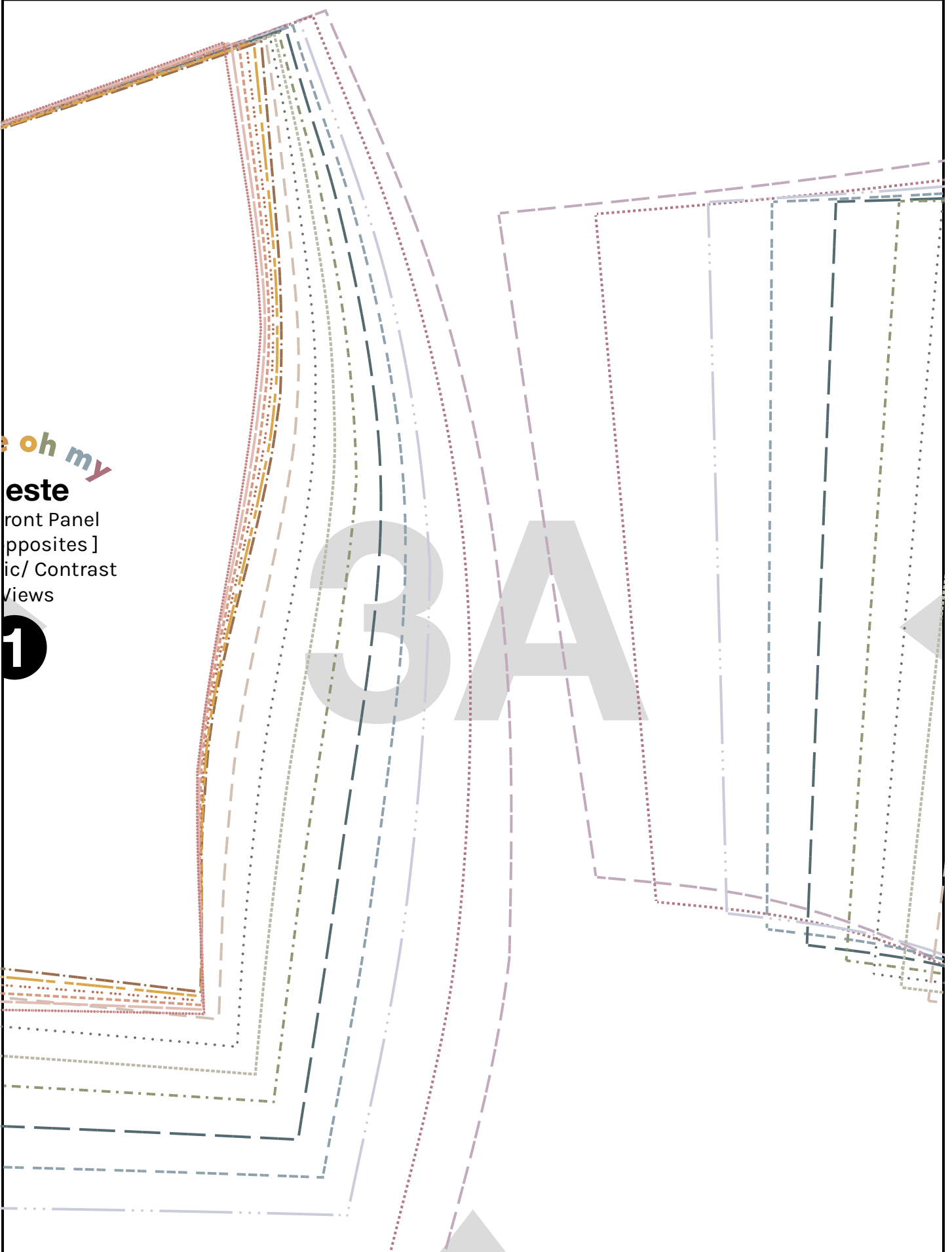
oh my

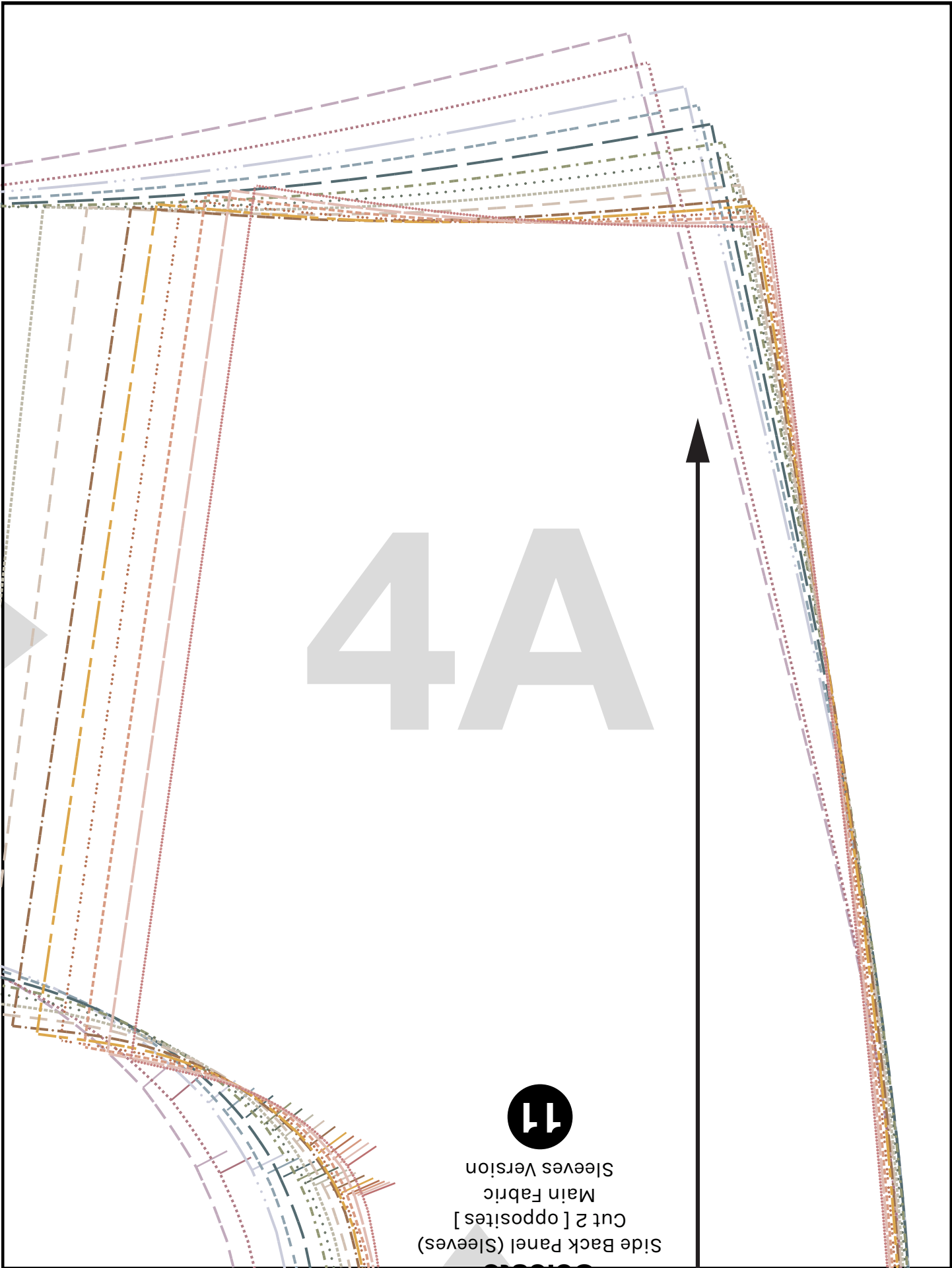
este

ront Panel  
pposites]  
ic/ Contrast  
Views

1

3A





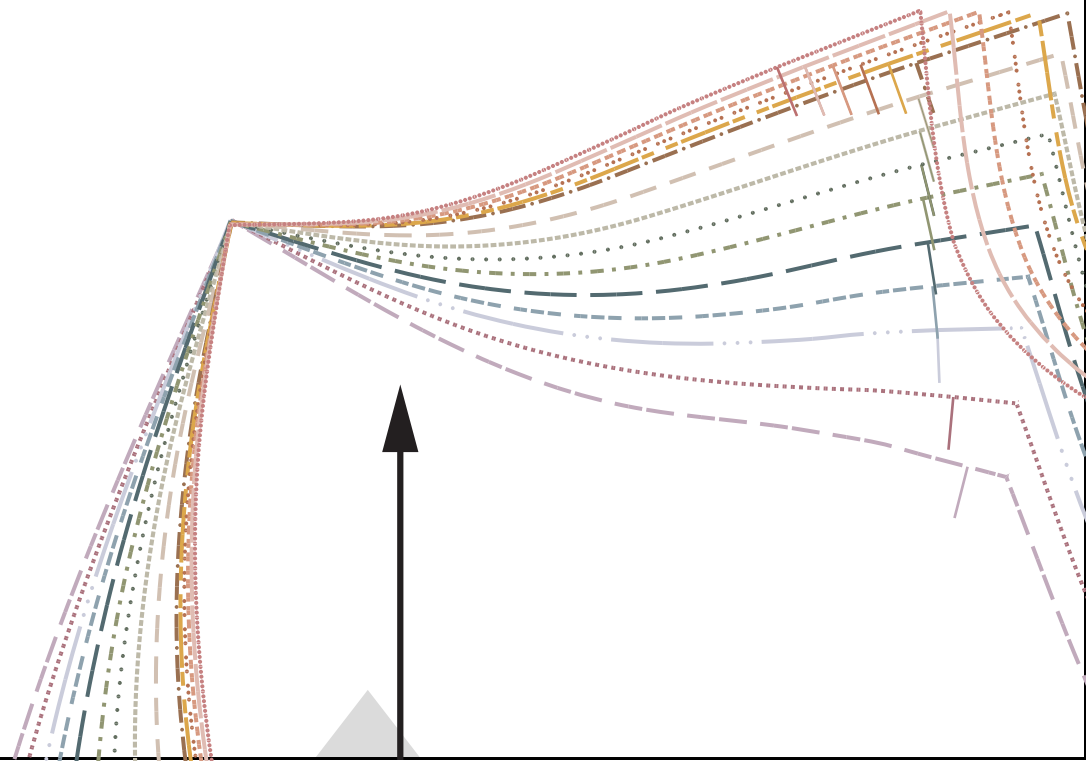
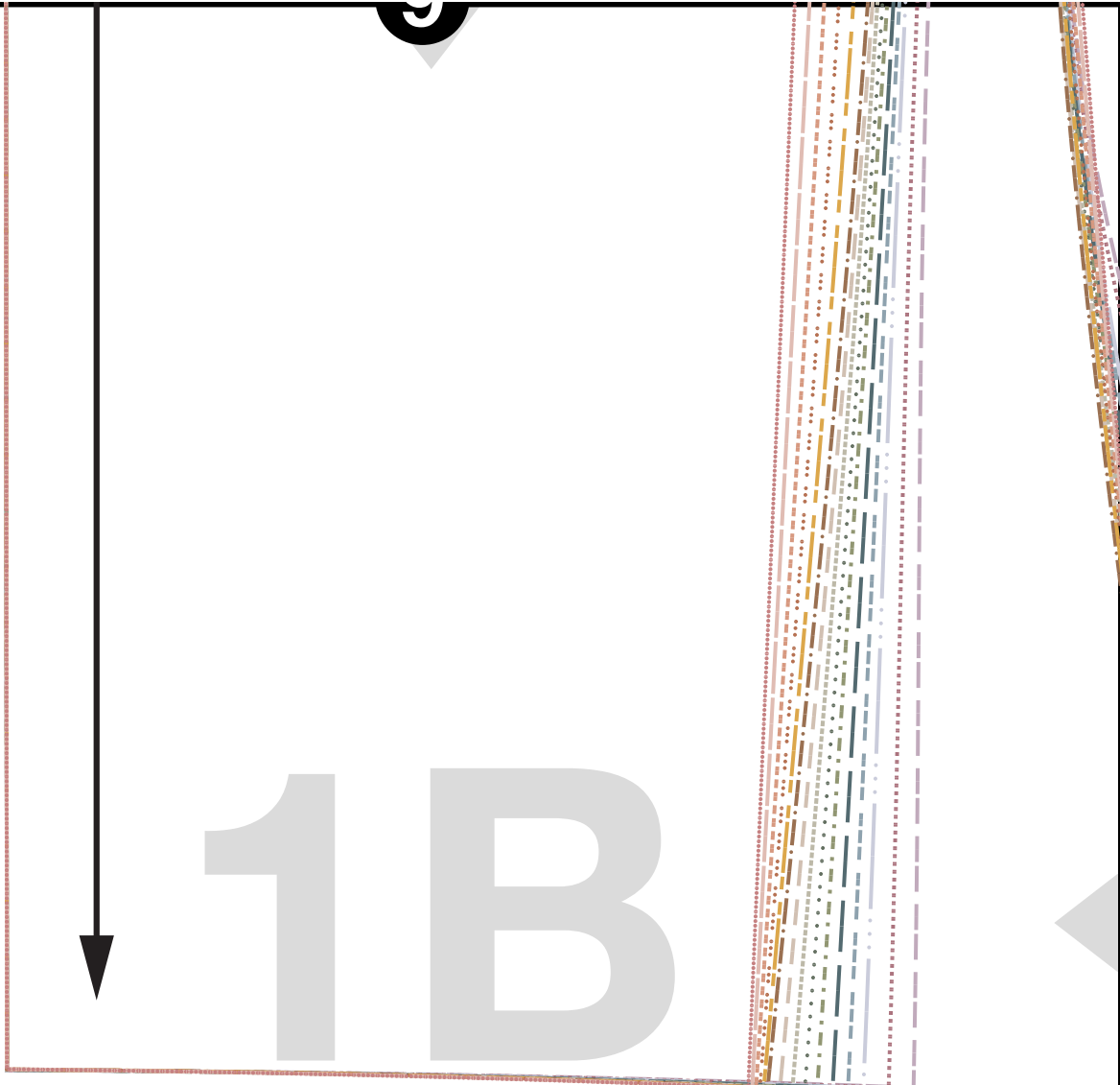
4A



Side Back Panel (Sleeves)  
Cut 2 [opposites]  
Main Fabric  
Sleeves Version



1B



oh me oh my

# Celeste

Side Back Panel (Sleeveless)

Cut 2 [ opposites ]

Main Fabric

Sleeveless Version

10

2B



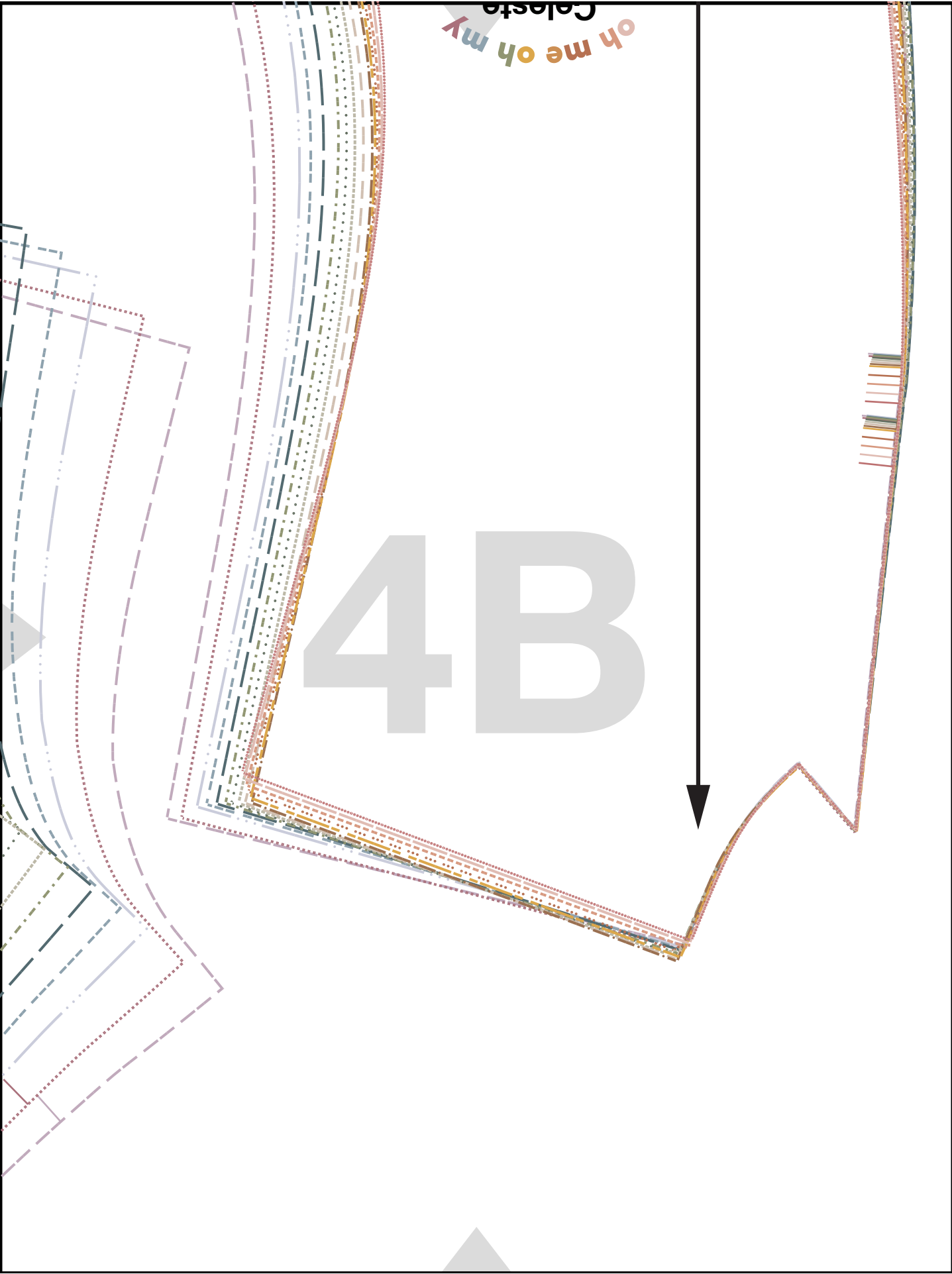


oh me oh my  
**Celeste**  
Yoke (Sleeves)  
Cut 2 [opposites]

cu

oh me oh my  
Celeste

4B



oh me oh my

# Celeste

Side Front Panel (Sleeveless)

Cut 2 [ opposites ]

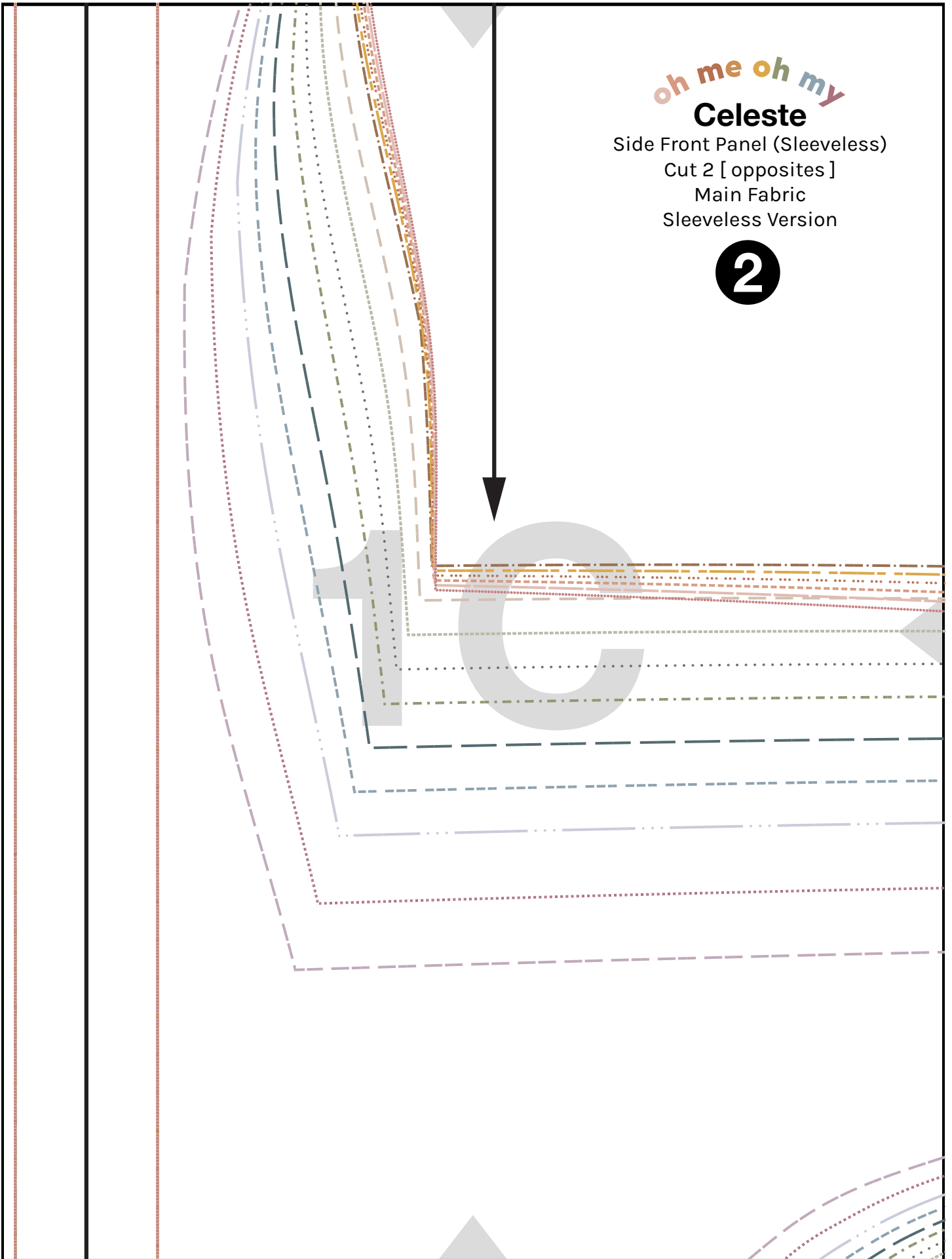
Main Fabric

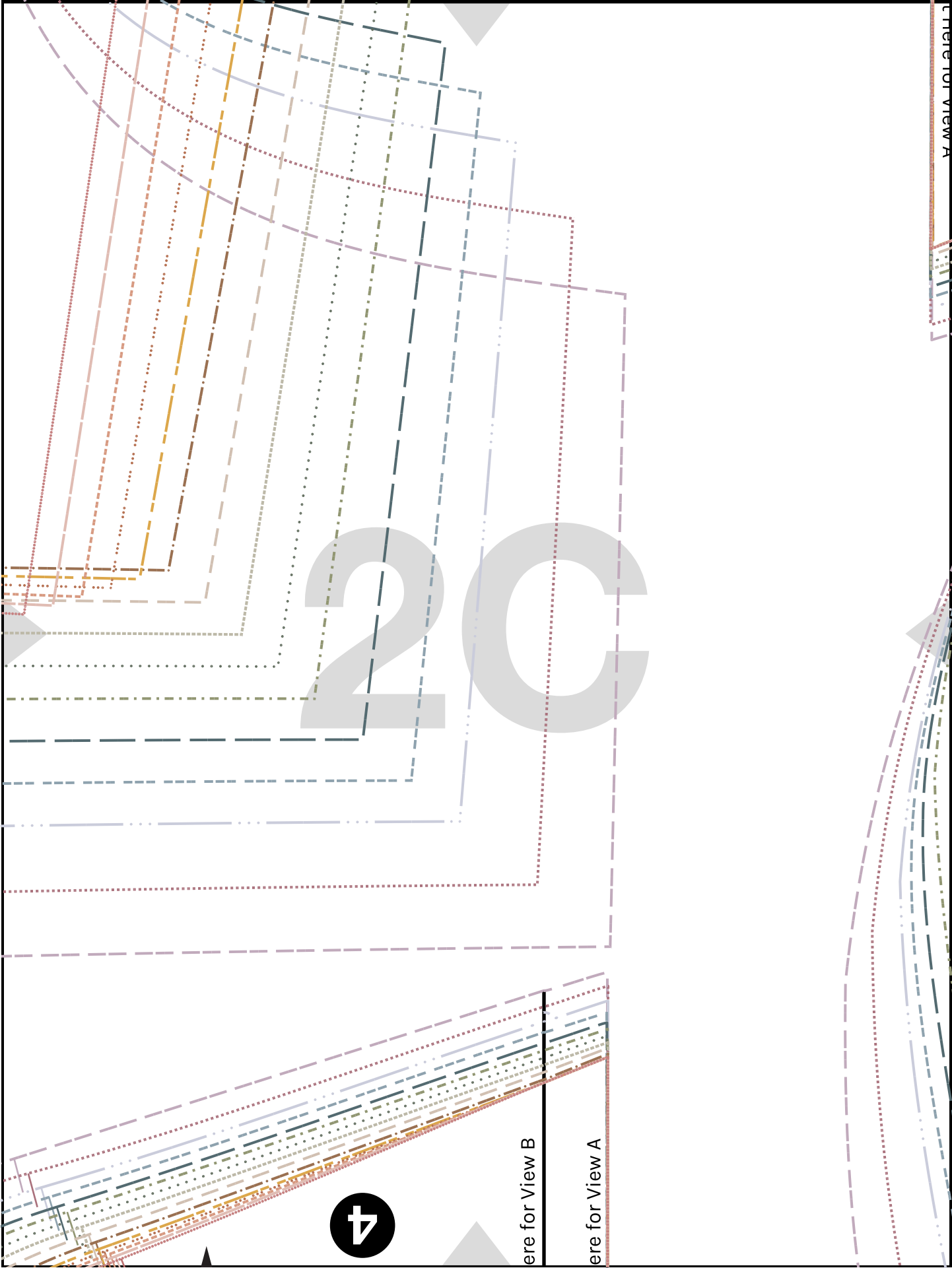
Sleeveless Version

2



TC





Place Here for View B

Main Fabric / Contrast  
Sleeves Version

5

3C

oh me oh my

**Celeste**

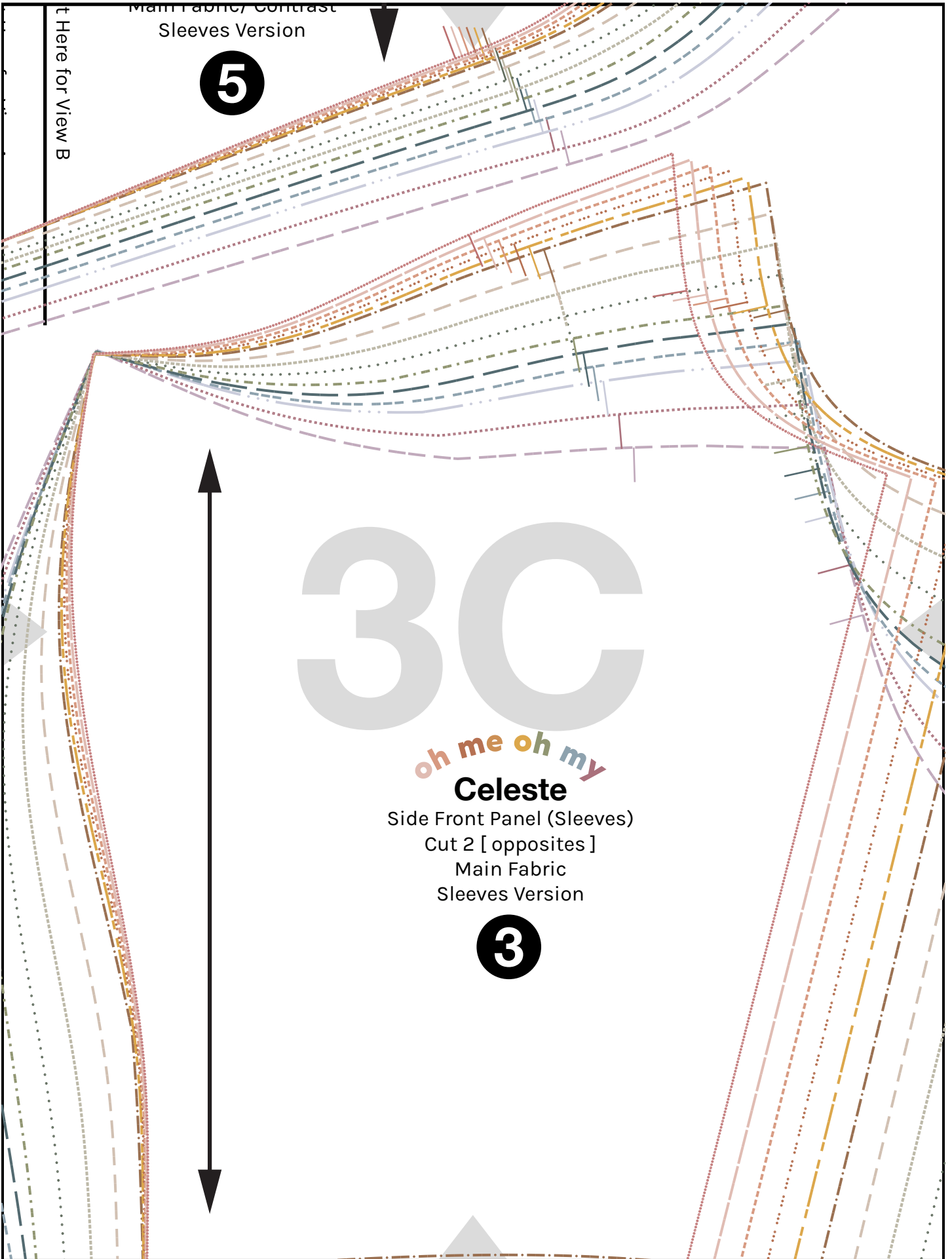
Side Front Panel (Sleeves)

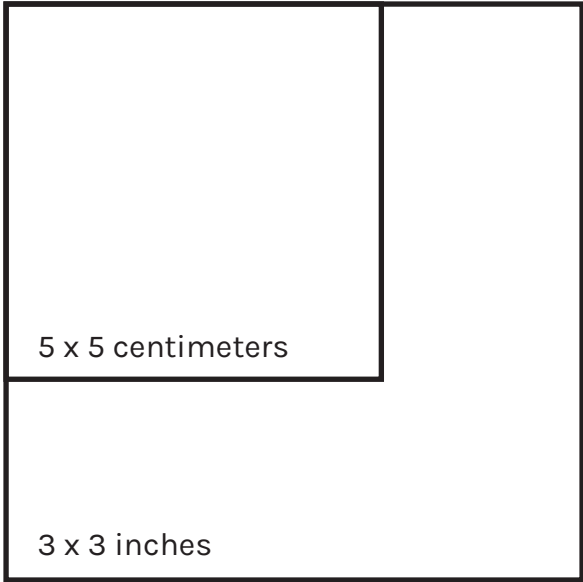
Cut 2 [ opposites ]

Main Fabric

Sleeves Version

3





5 x 5 centimeters

3 x 3 inches

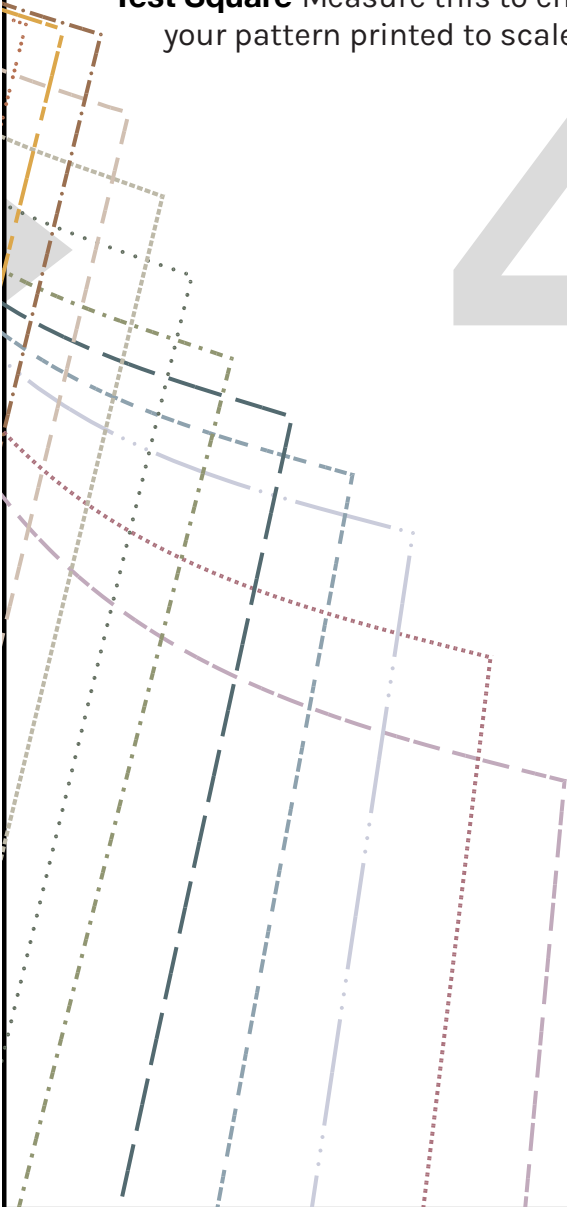
**Test Square** Measure this to ensure your pattern printed to scale!

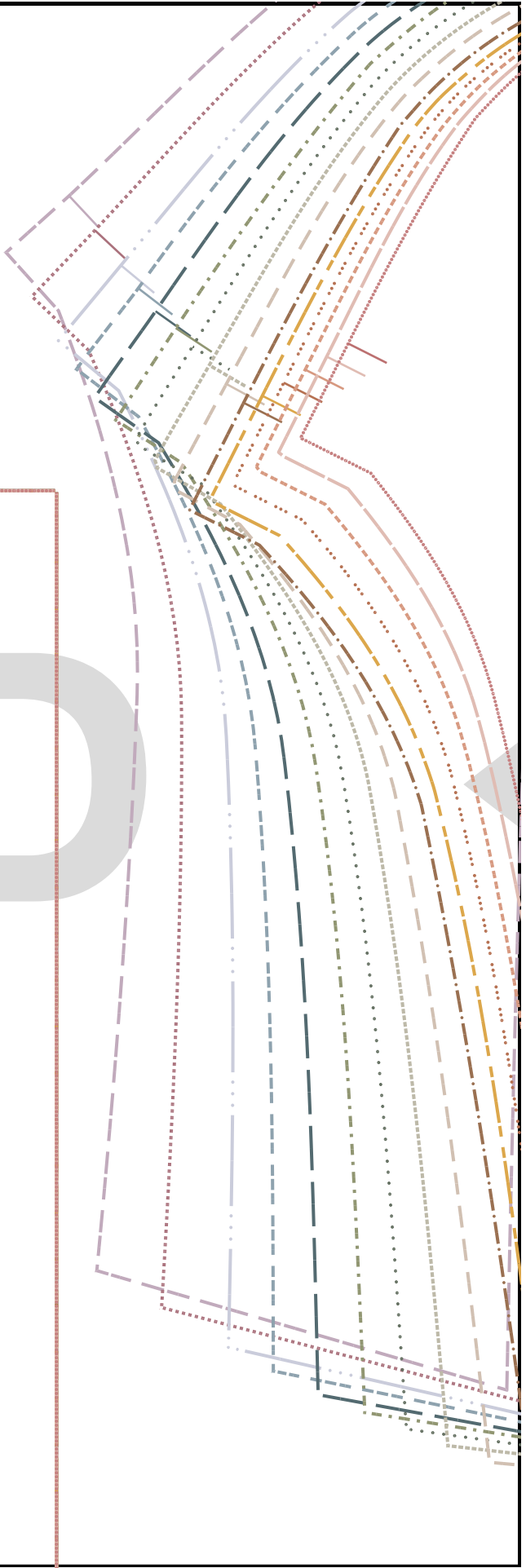
### Size Key

00	
0	
2	
4	
6	
8	
10	
12	
14	
16	
18	
20	
22	
24	
26	
All Sizes	

**All Seam Allowances are Included**

40





# Celeste

Back Waistband

Cut 2 [ opposites ]

Main Fabric

All Views



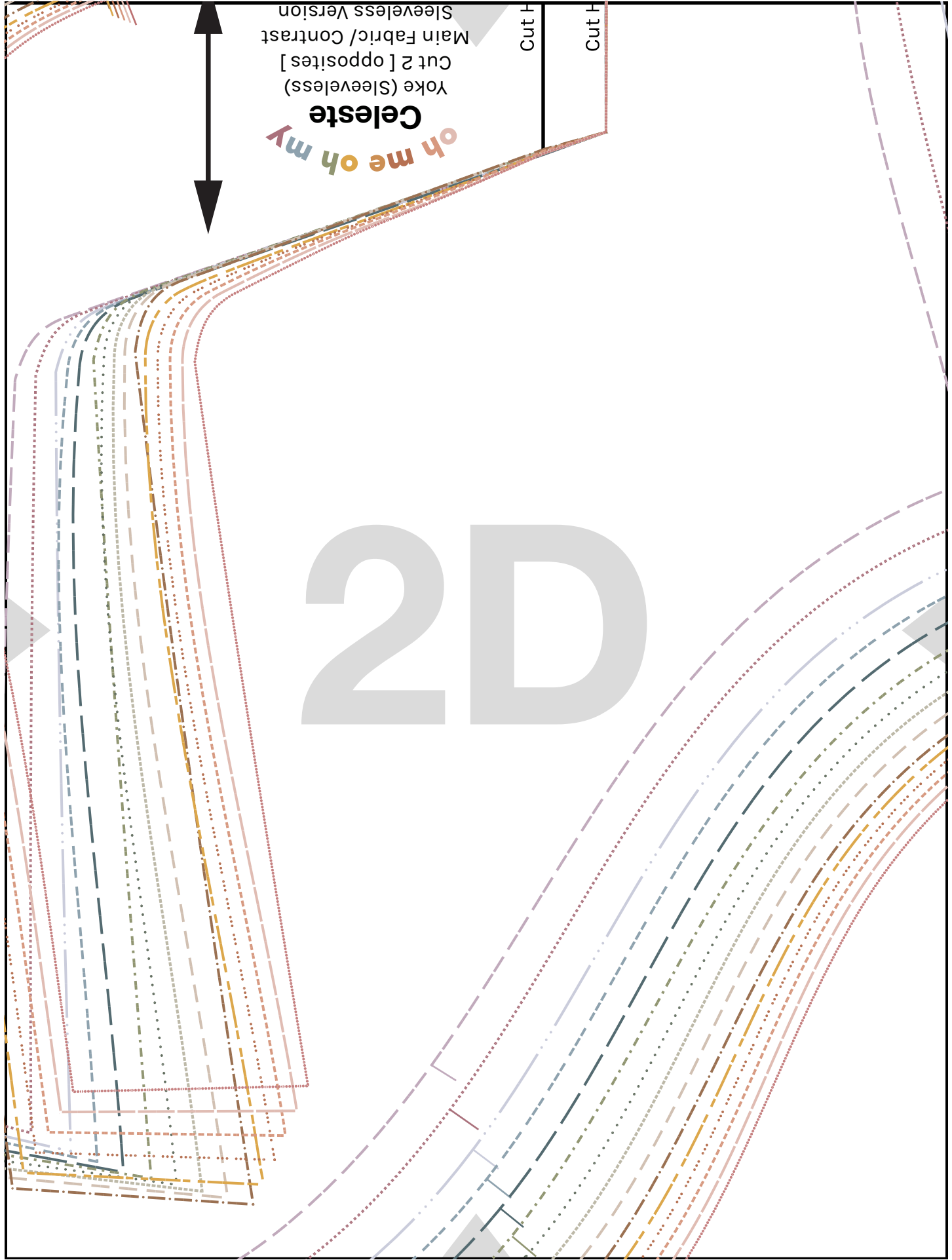
14

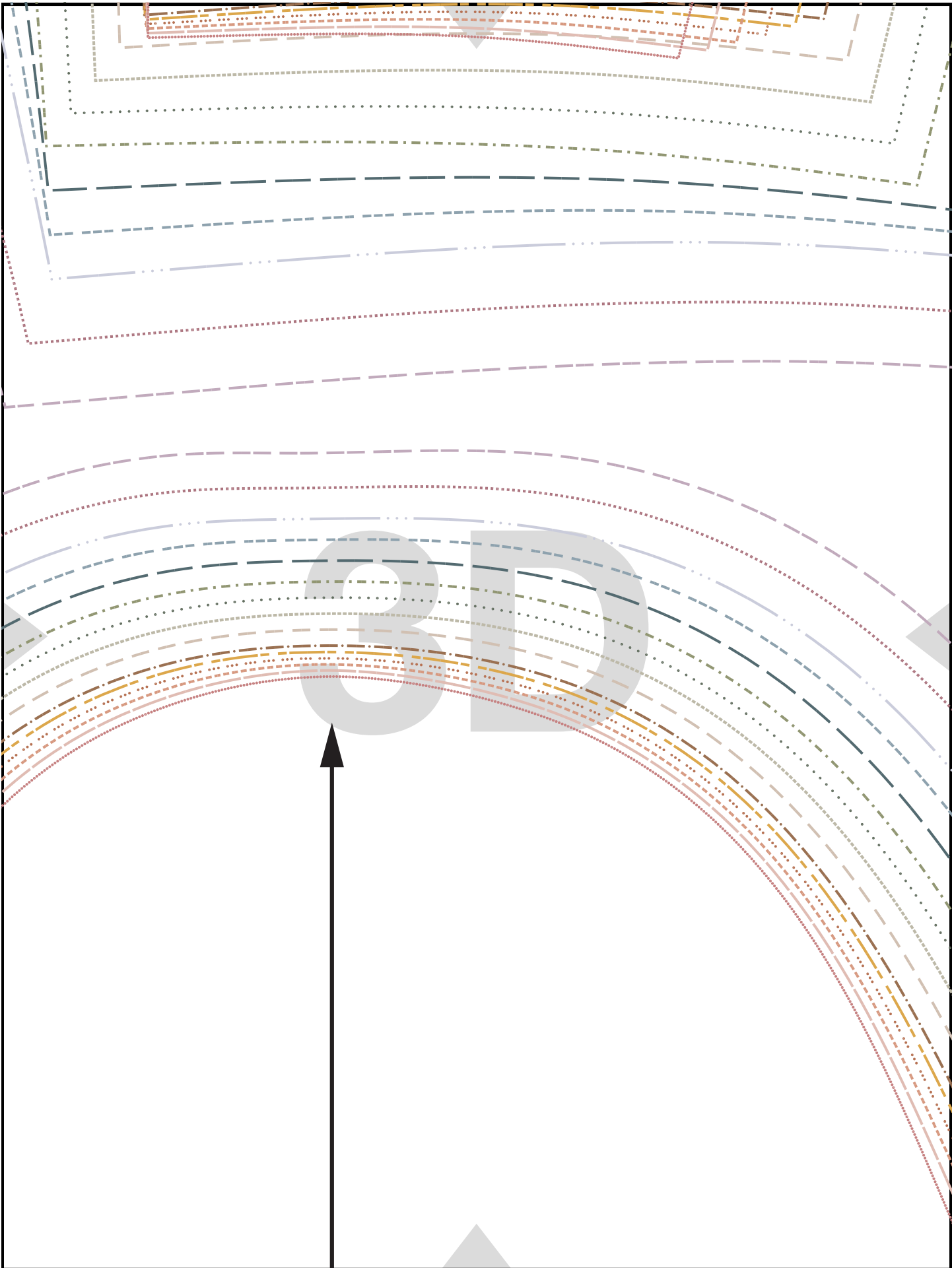
# 2D

**oh me oh my**  
**Celeste**  
Yoke (Sleeveless)  
Cut 2 [Opposites]  
Main Fabric/ Contrast  
Sleeveless Version

Cut H

Cut H





The image features a white background with a black border. In the center, the text "4D" is displayed in a large, bold, grey sans-serif font. Surrounding the text are several abstract geometric elements: a grey downward-pointing triangle at the top center, a grey rightward-pointing triangle on the left side, and a grey upward-pointing triangle at the bottom center. On the left side, there are several overlapping, semi-transparent lines in various colors (dark blue, light blue, purple, red, green, orange) and styles (dashed, dotted, solid). These lines form a series of parallel, slightly curved paths that appear to recede into the distance, creating a sense of depth and perspective. The overall composition is clean and modern, with a focus on geometric forms and color contrast.

oh me oh my

**Celeste**

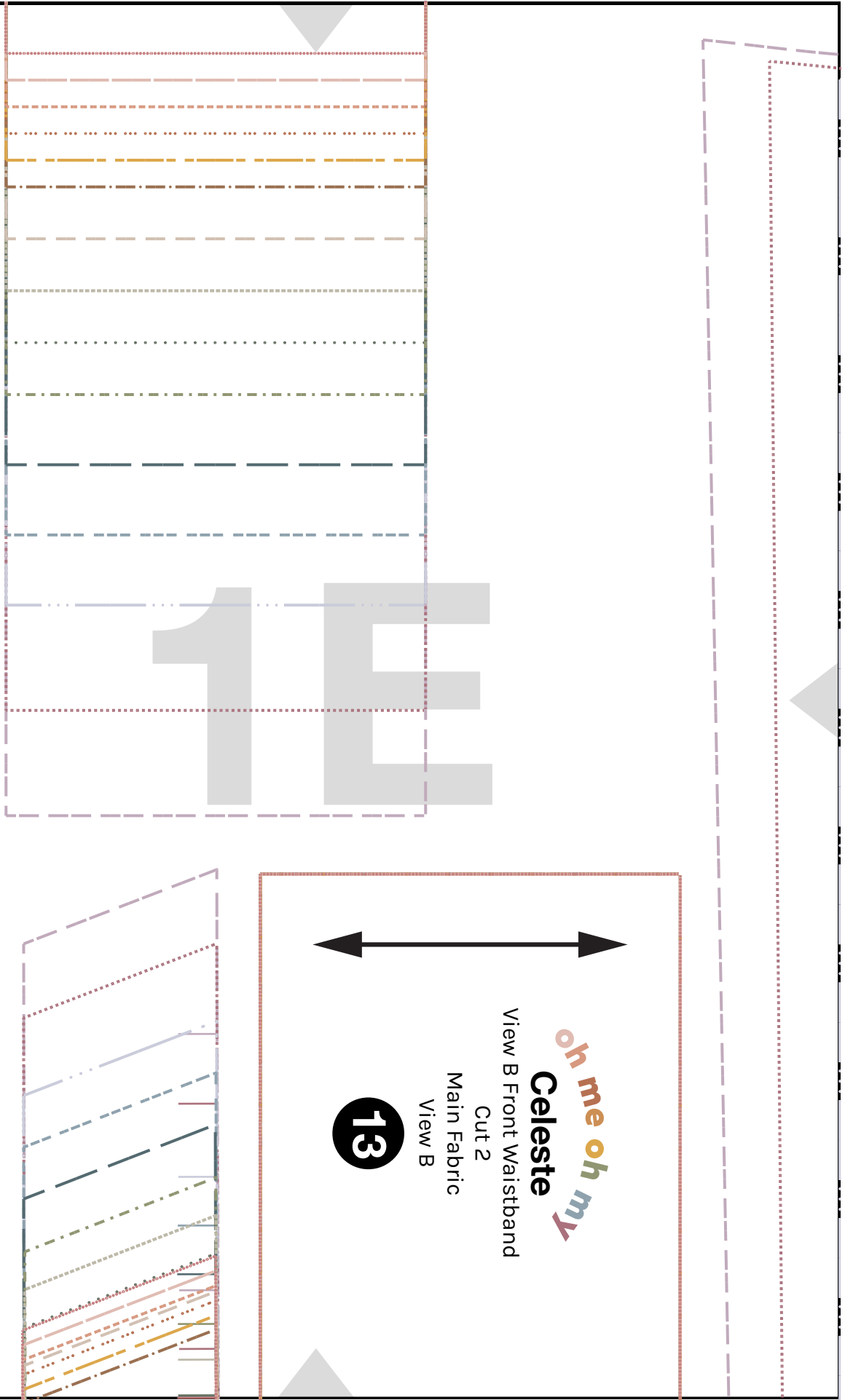
View B Front Waistband

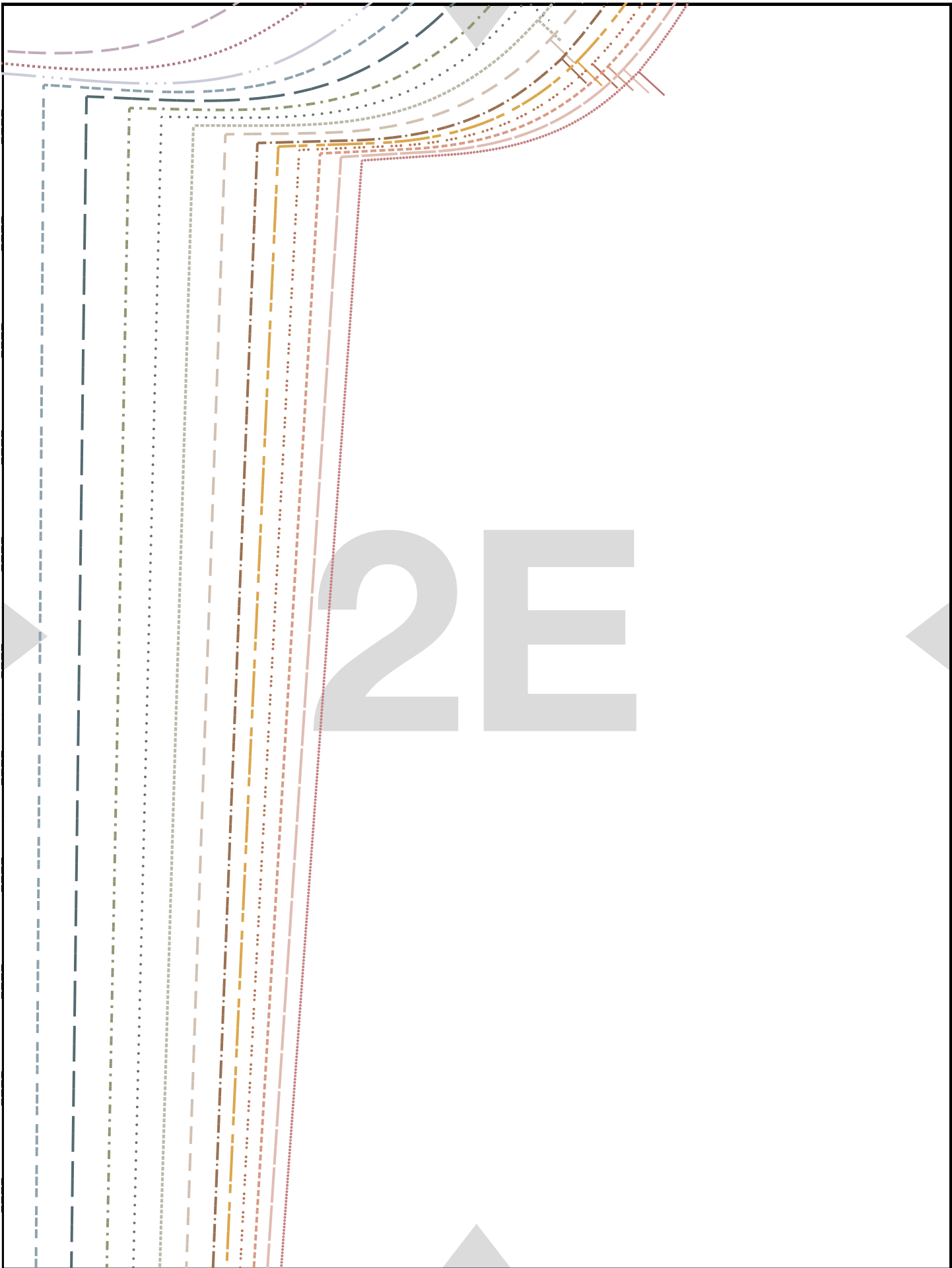
Cut 2

Main Fabric

View B

13





oh me oh my

## Celeste

Sleeve

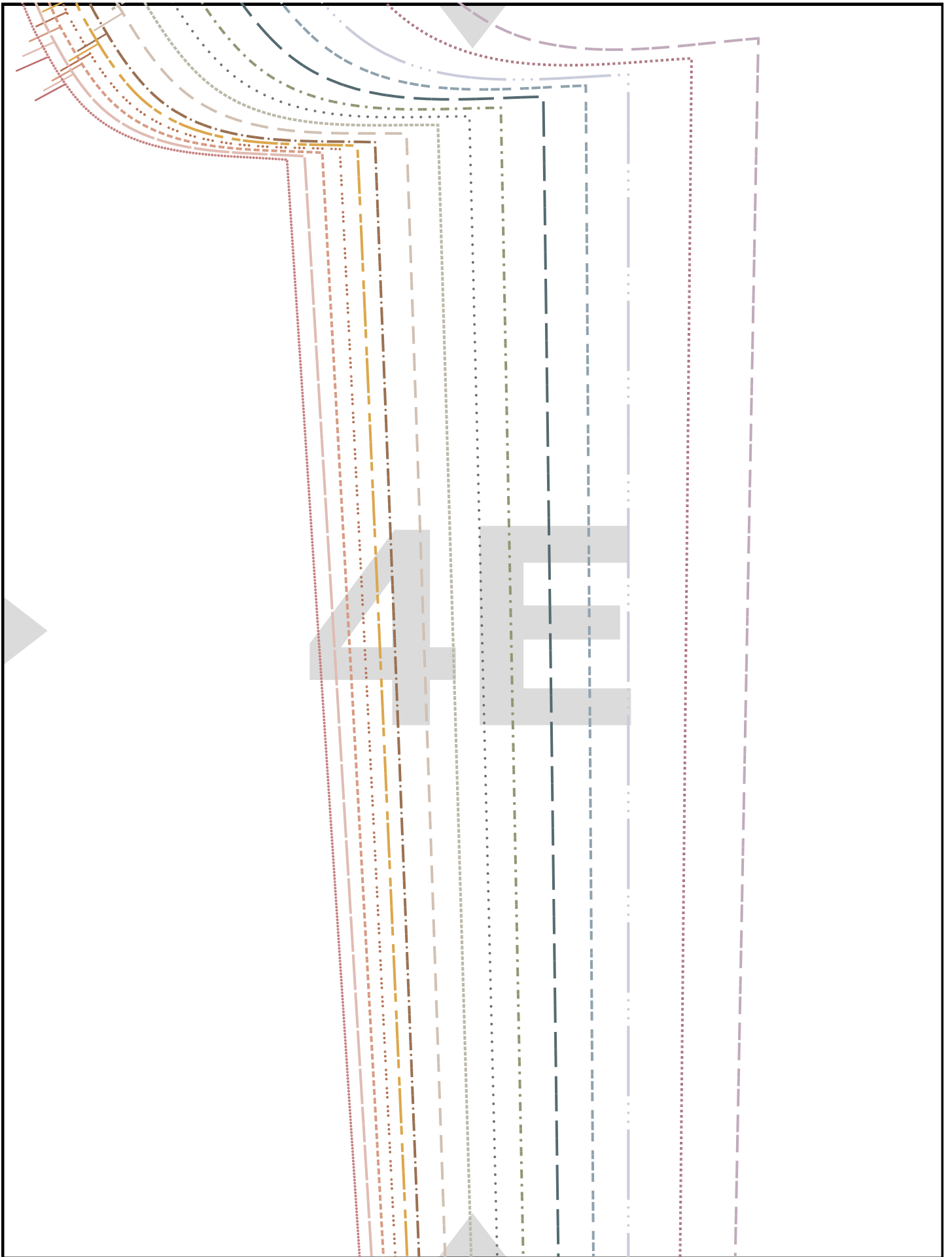
Cut 2 [ opposites ]

Main Fabric/ Contrast

Sleeves Version

15

3E

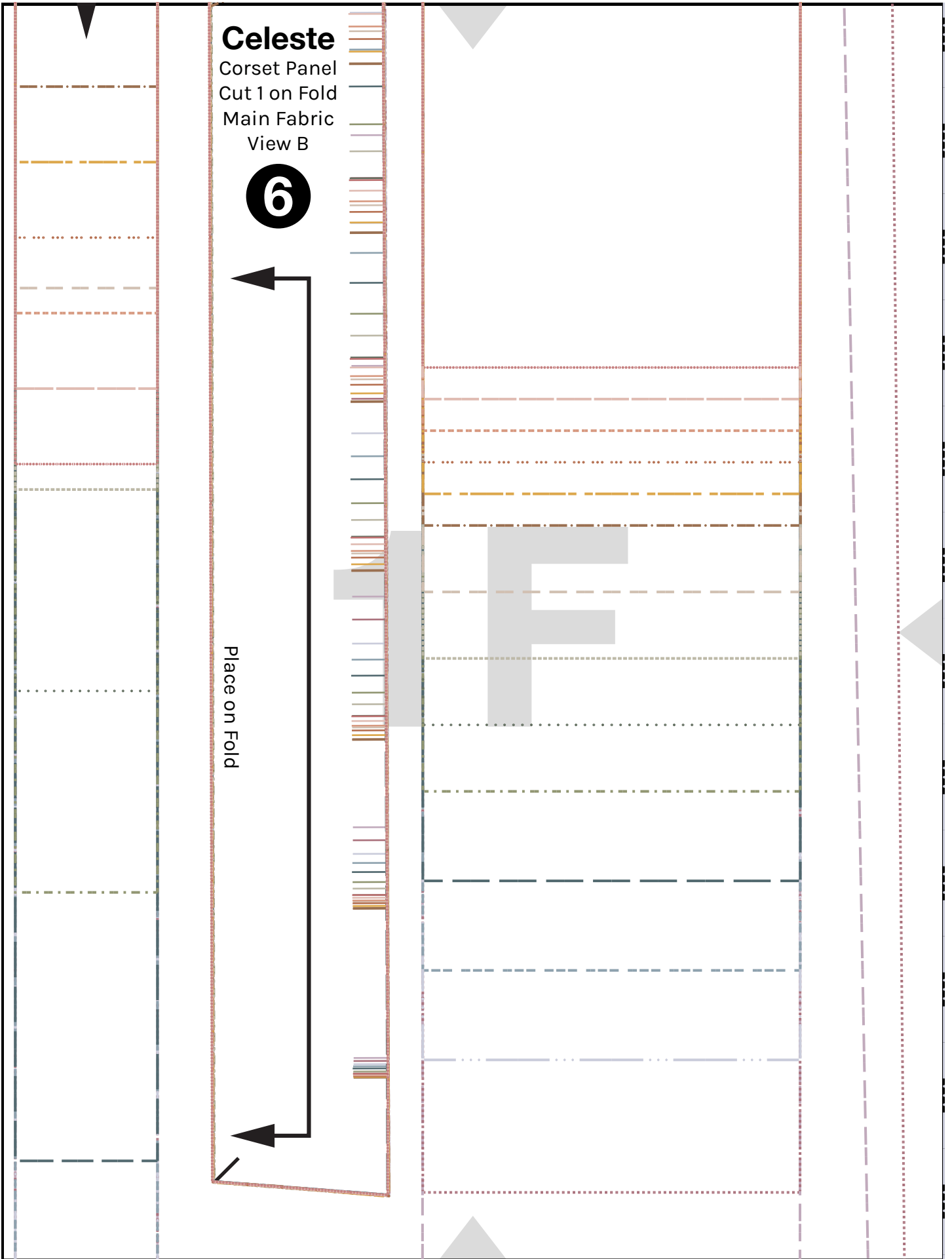


# Celeste

Corset Panel  
Cut 1 on Fold  
Main Fabric  
View B

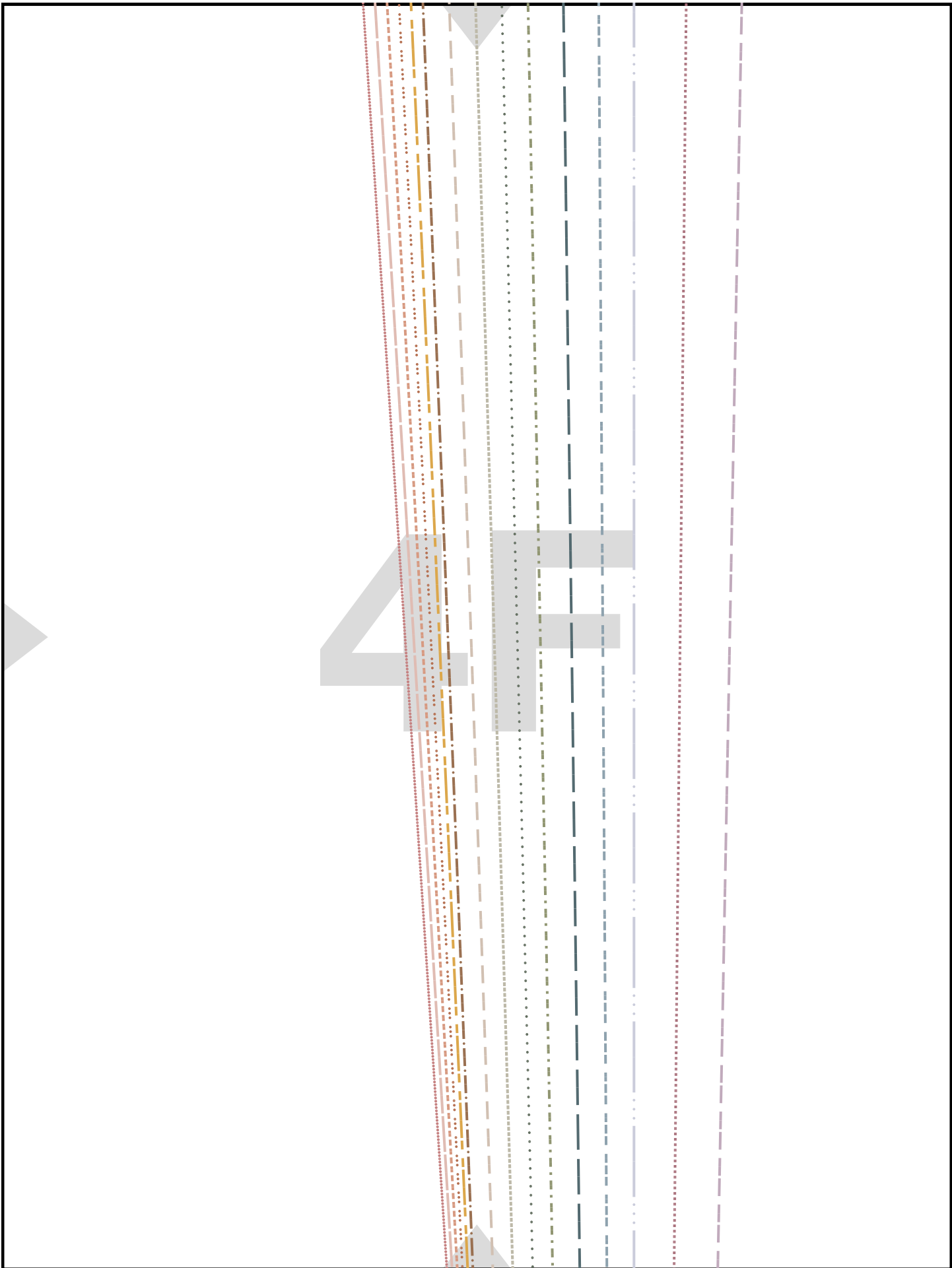
6

Place on Fold



2F

3F



# Celeste

Corset Loops

Cut 2

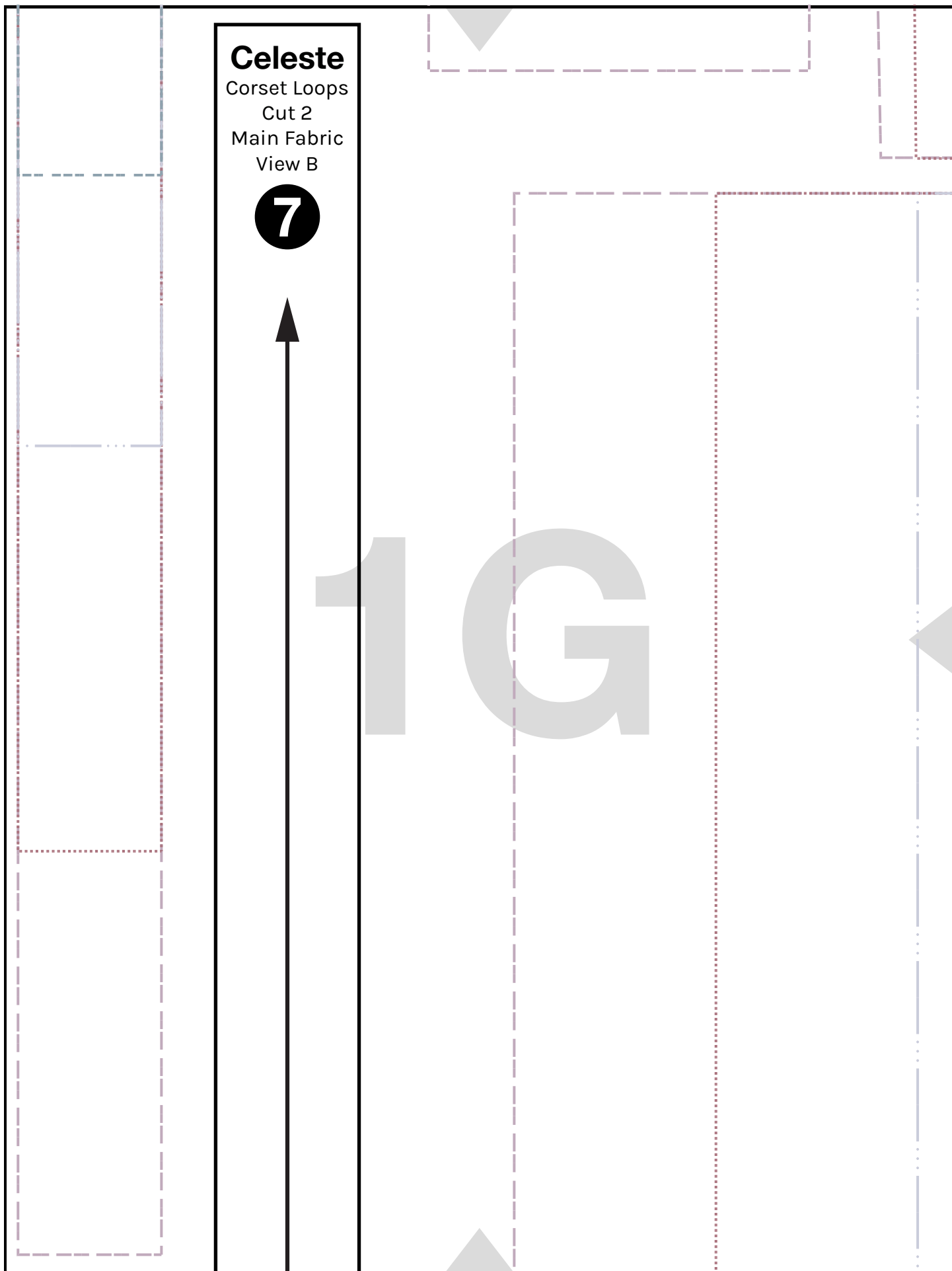
Main Fabric

View B

7



1G



2G

3G

oh me

Cele

Skirt

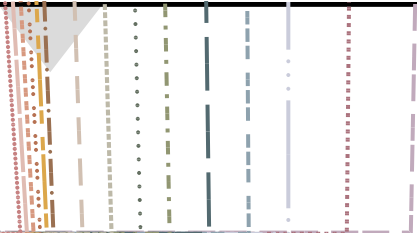
Cut 1 on Fold\* for Front S

Main

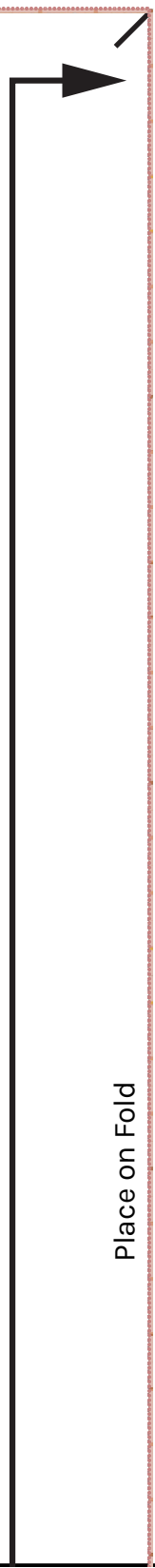
All V

1

\*Cut on the fold if you  
If not, cut all 4 separa  
with 3 (1 piece being fo  
in you



4G



Place on Fold

oh my

este

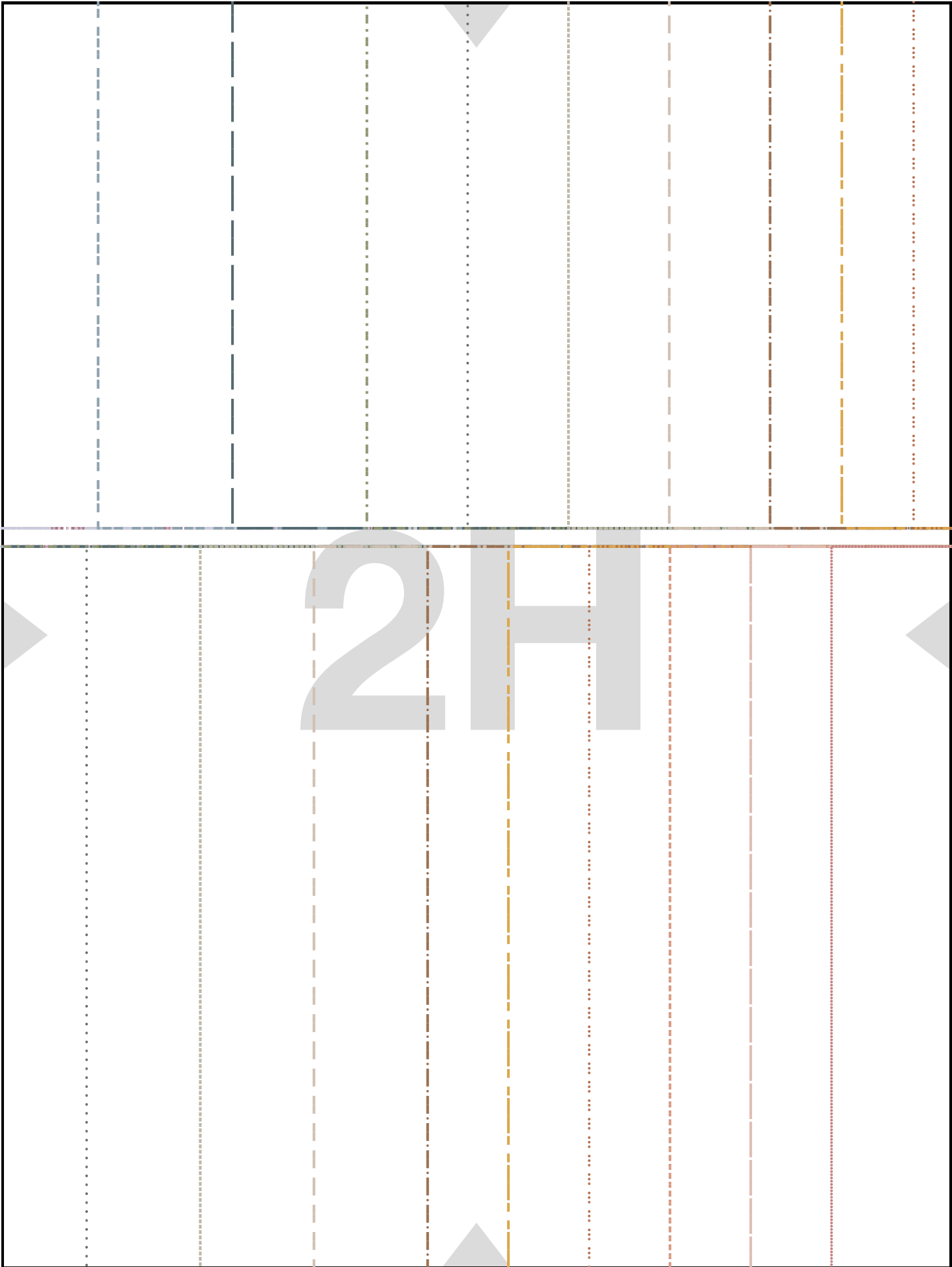
Tier 1  
kirt + Cut 2 for Back Skirt

Fabric  
ews

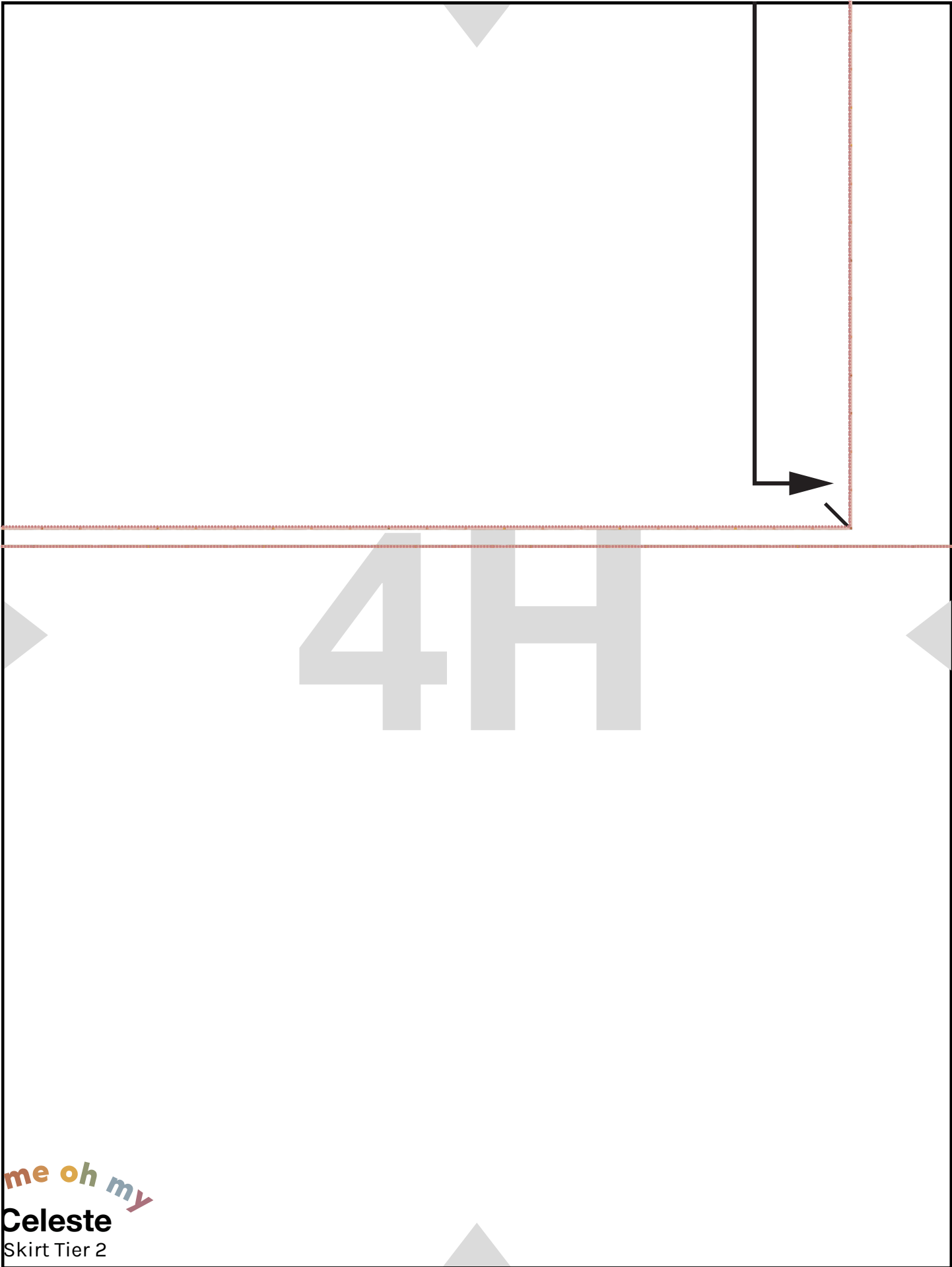
6

fabric is wide enough.  
ely. You should end up  
lded) or 4 of this piece  
fabric.





3H



me oh my

**Celeste**

Skirt Tier 2

oh me oh my

# Celeste

View A Front Waistband

Cut 1 on Fold

Main Fabric

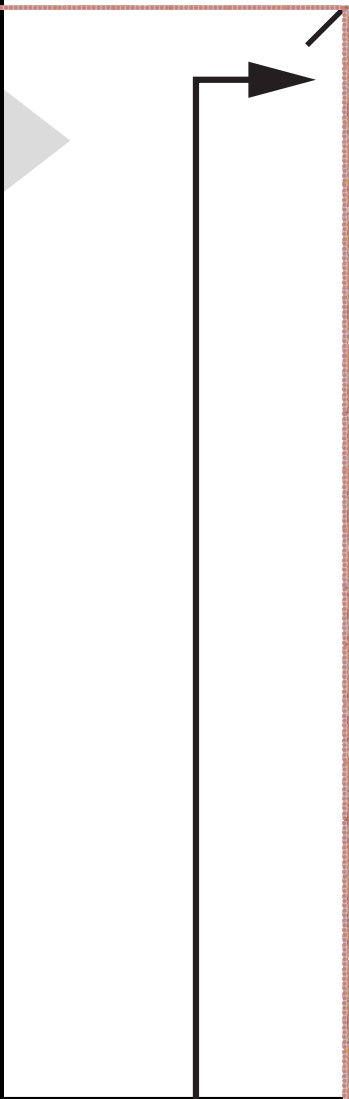
View A

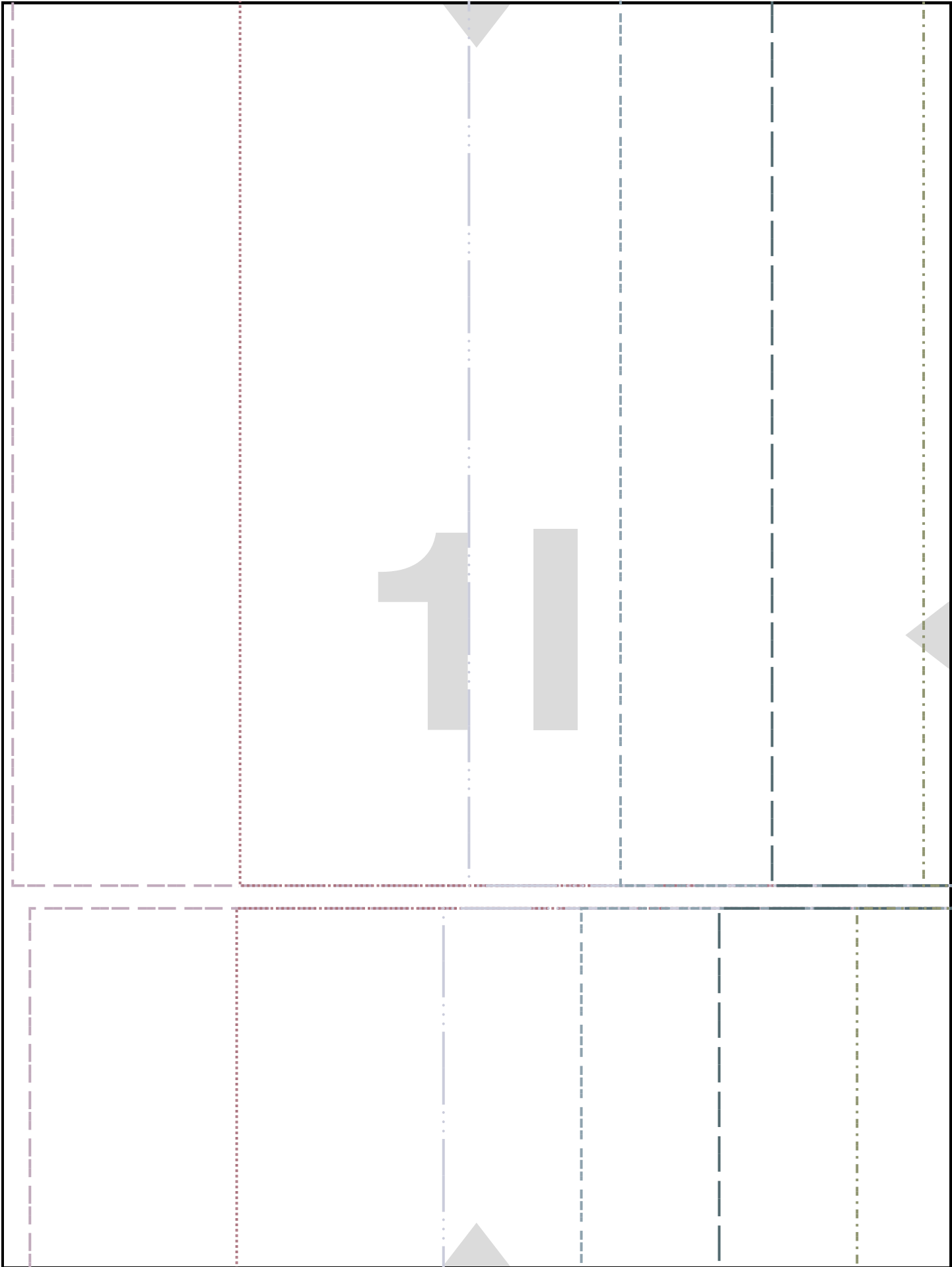
12

Place on Fold



54



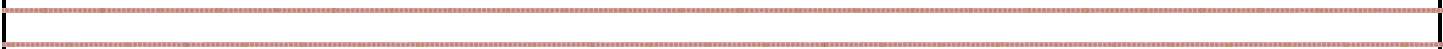


21

Cut on Fold\* for F  
Main

\*Cut on the fold  
If not, cut all 4 se  
with 3 (1 piece be  
i

31



Front SKIRT + Cut 2 for Back SKIRT

Fabric/ Contrast

All Views

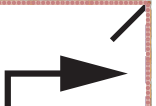
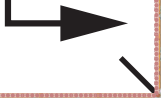
**17**

If your fabric is wide enough.  
separately. You should end up  
(being folded) or 4 of this piece  
on your fabric.

41

Place on Fold

51



1 J

2J

3J

oh me oh my

## Celeste

Skirt Tier 3

Cut 1 on Fold\* for Front Skirt + Cut 2 for Back Skirt

Main Fabric

All Views

18

\*Cut on the fold if your fabric is wide enough.  
If not, cut all 4 separately. You should end up  
with 3 (1 piece being folded) or 4 of this piece  
in your fabric.



5J

Place on Fold

oh me oh my

©Oh Me Oh My Sewing, 2025

This pattern is not to be distributed, reproduced, or resold.

OhMeOhMySewing.com // @OhMeOhMySewing // Facebook.com/OhMeOhMySewing