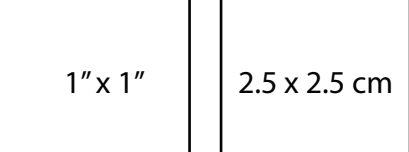




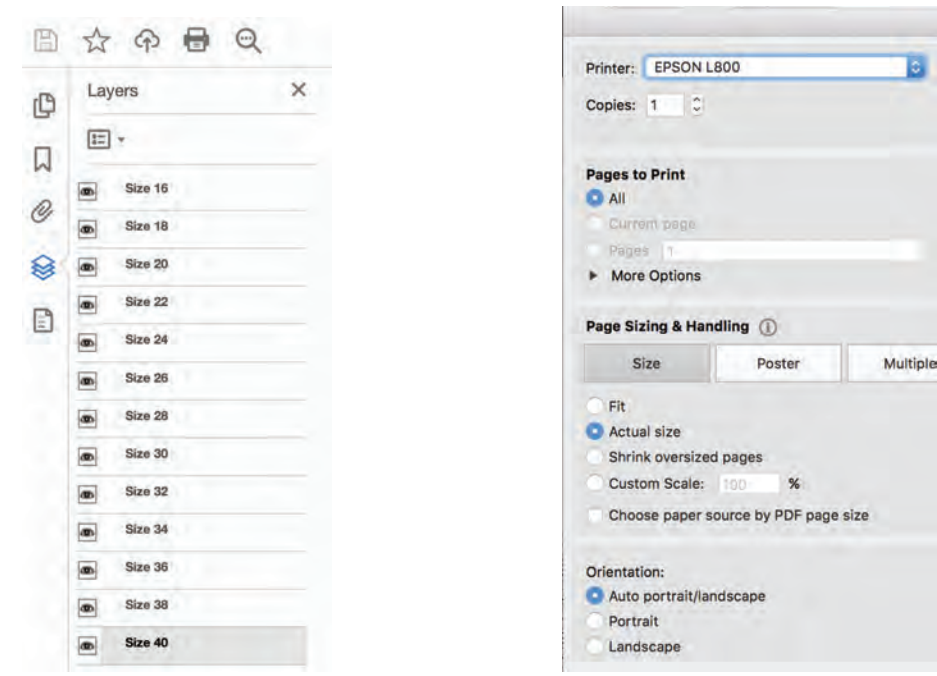
Bainbridge Pullover

Sewing Pattern
Size 16 - 40
Cup B, C, D & DD

© 2021 by Itch to Stitch. All rights reserved. No part of this document may be reproduced, stored in a retrieval system, or transmitted in any form or by any means, electronic, mechanical, photocopying, recording, or otherwise, without the prior written permission of Itch to Stitch.



Be sure to measure the 1" or 2.5 cm scaling square before cutting your fabric!



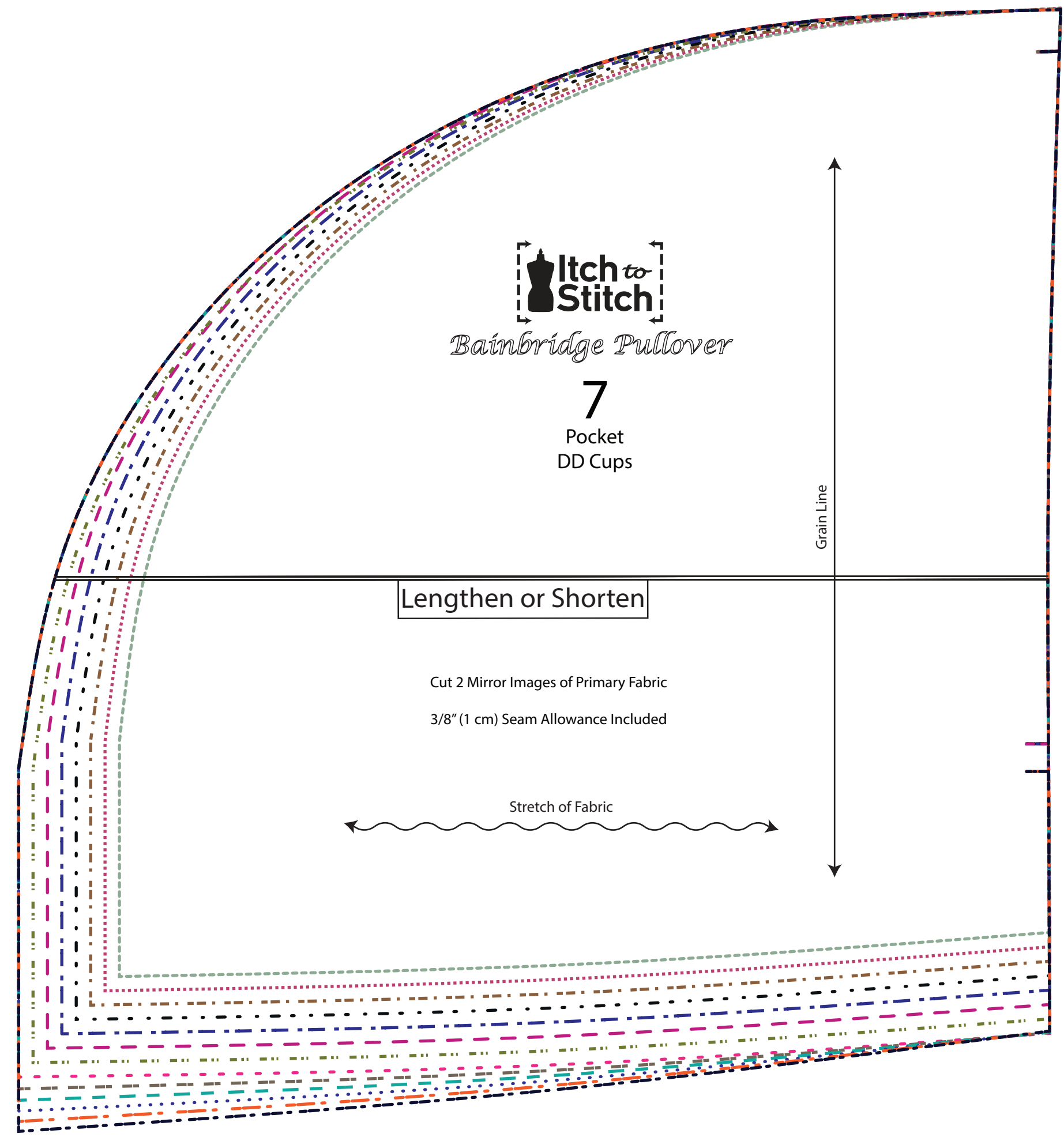
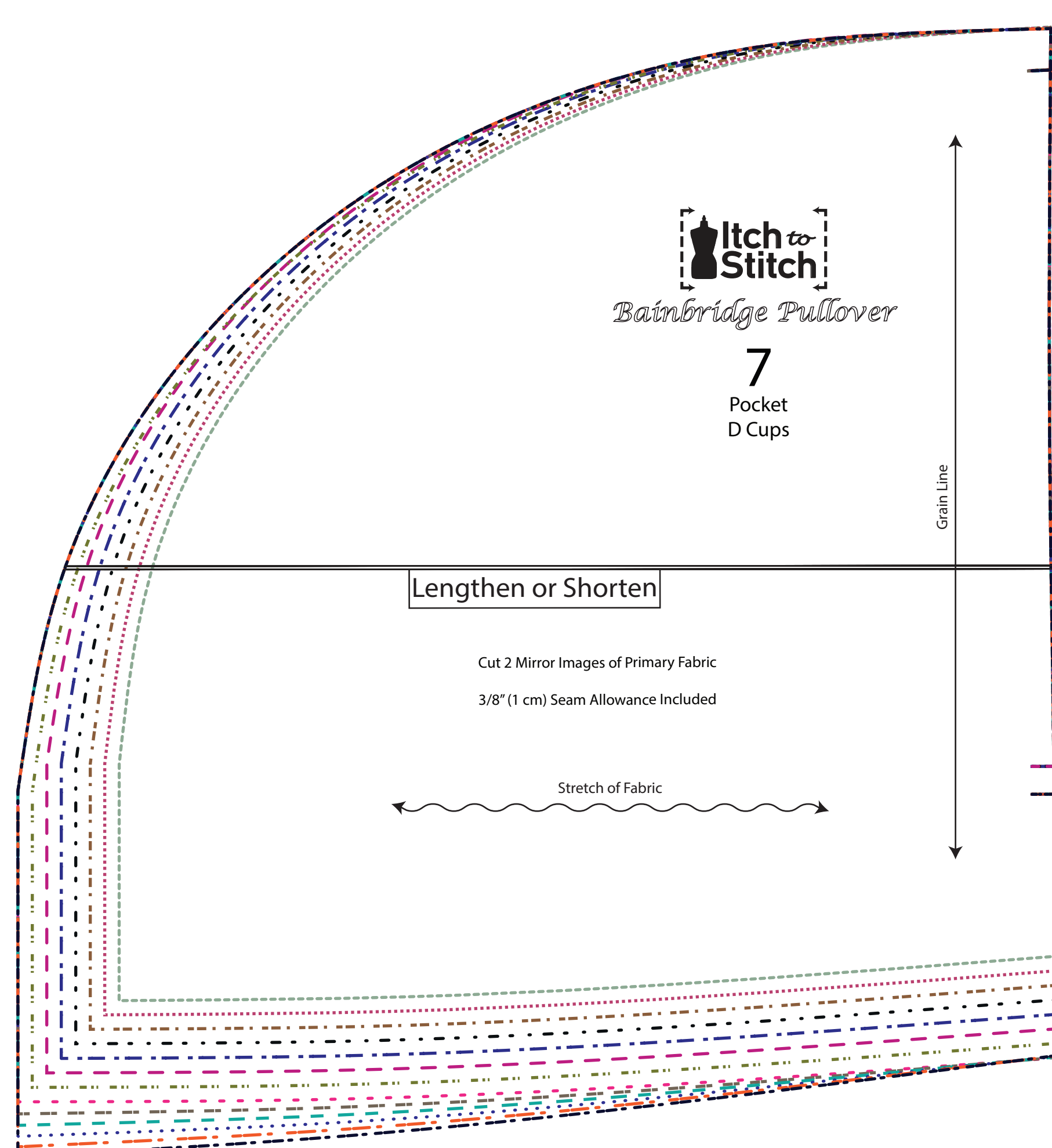
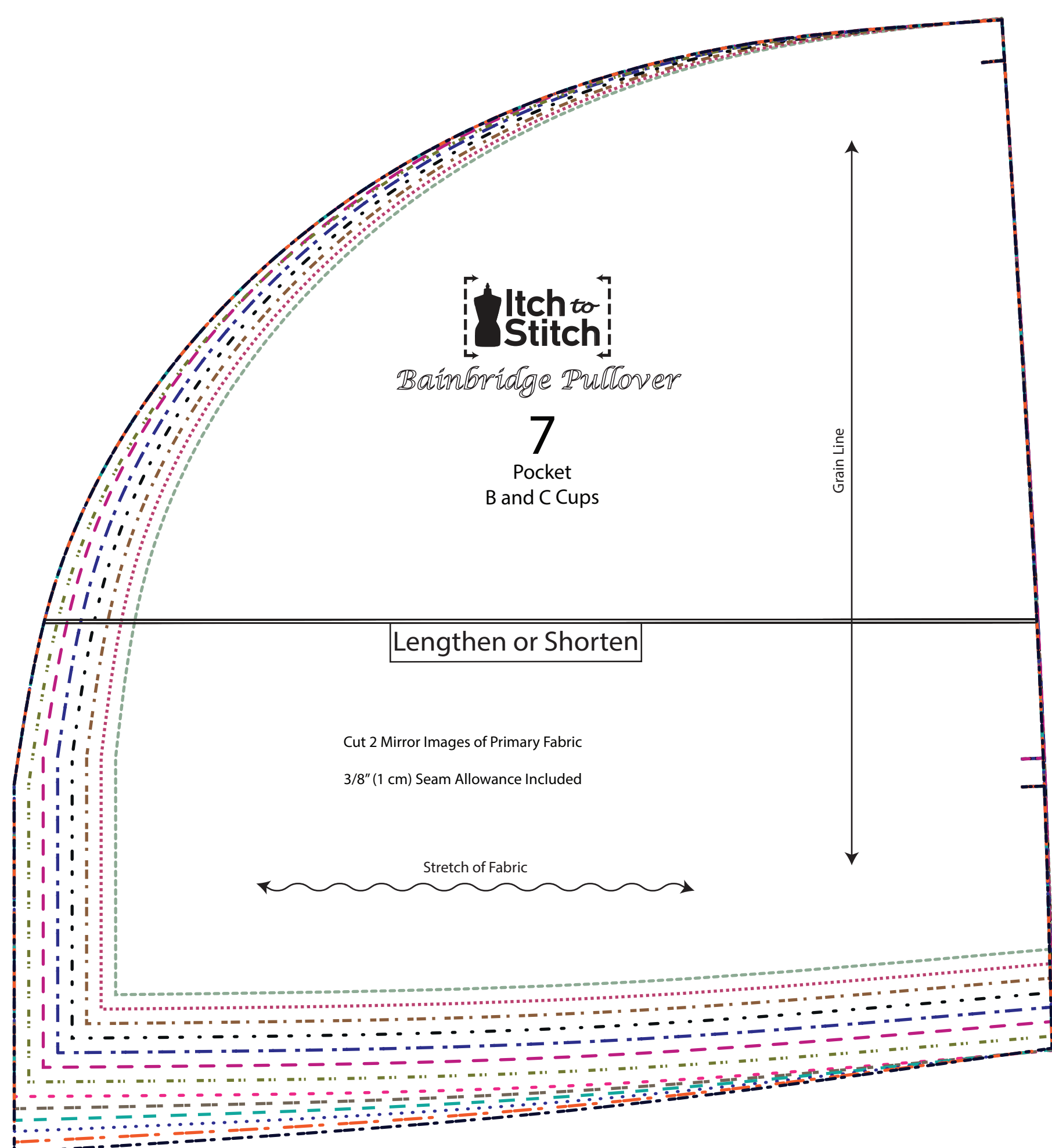
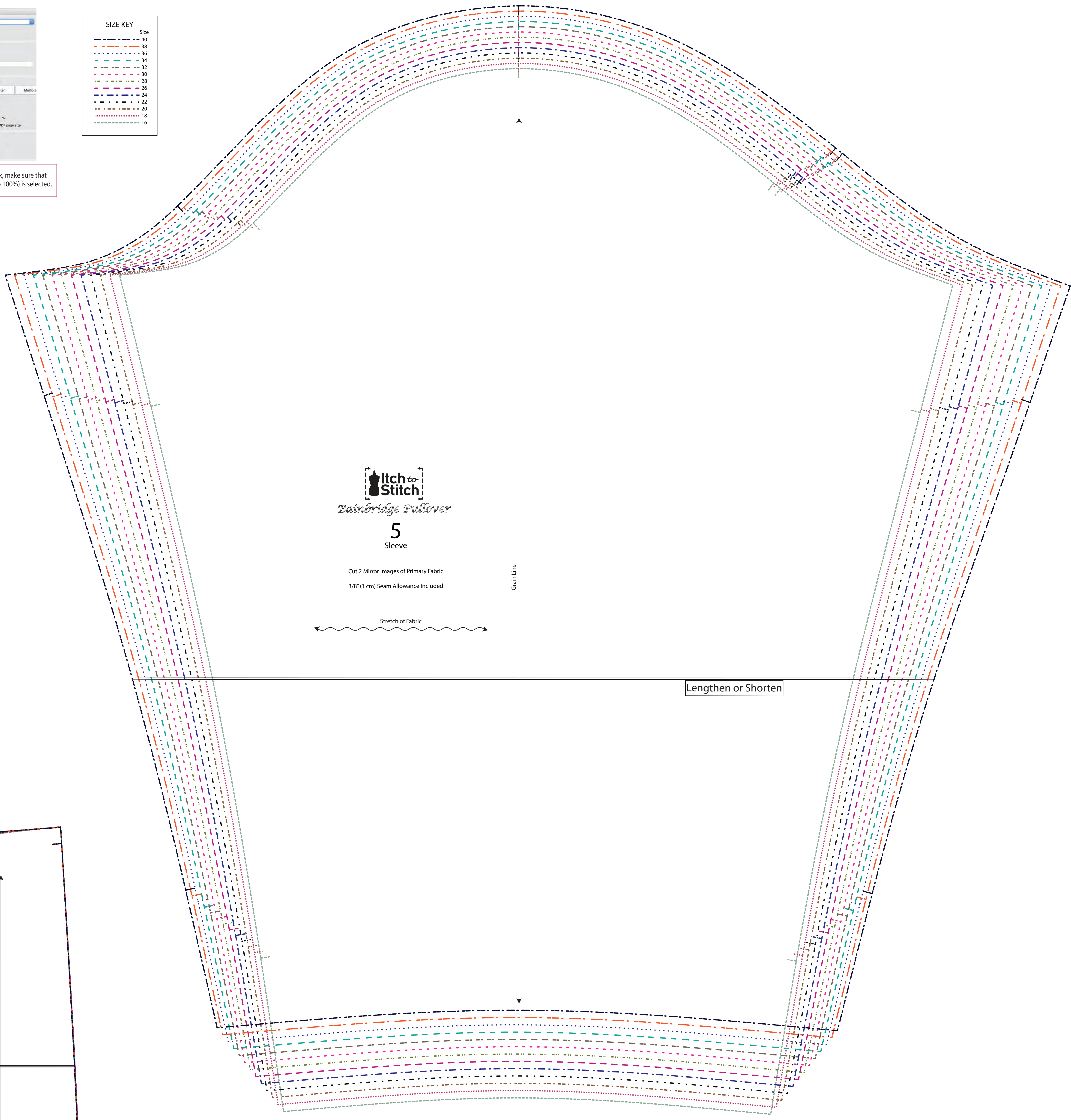
In Acrobat Reader, in the Layers tab, check the eye icon to only see the size(s) you need.

In the Print dialog box, make sure that "Actual Size" (or scale to 100%) is selected.

SIZE KEY	Size
---	40
---	38
---	36
---	34
---	32
---	30
---	28
---	26
---	24
---	22
---	20
---	18
---	16

PRINTING INSTRUCTIONS

- This pattern includes layered pattern tiles that allow you to print only the sizes you need. In Acrobat Reader, click on the Layers icon on the left tab. Next to each size is an eye icon. Leave the eye icon on for the size(s) that you want to print. As you toggle the eye icons on and off, you can see the pattern lines appear/disappear as a result. Be sure to instruct your print shop so that they only print the size(s) you need.
- Make sure that you choose "Actual Size" (or scale to 100%) in the Print dialog box.
- Measure one of the scaling squares (1" x 1" or 2.5 x 2.5 cm) to ensure the pattern is printed with the correct scale.
- This pattern file is designed to be printed on A0 paper (33.11" x 46.81" or 84.1 cm x 118.9cm). You can send this file to a print shop to print pattern. No taping of paper will be necessary. This file is provided to you in addition to the print-at-home version.
- Sewing instructions are not included here so you can send this file to your print shop to print. Sewing instructions are included in the file with the print-at-home version of the pattern.
- This pattern includes B, C, D and DD cups.
 - For B cup, print pages 1, 2 and 3.
 - For C cup, print pages 1, 2 and 4.
 - For D cup, print pages 1, 2 and 5.
 - For DD cup, print pages 1, 2 and 6.

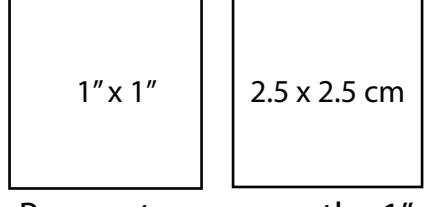




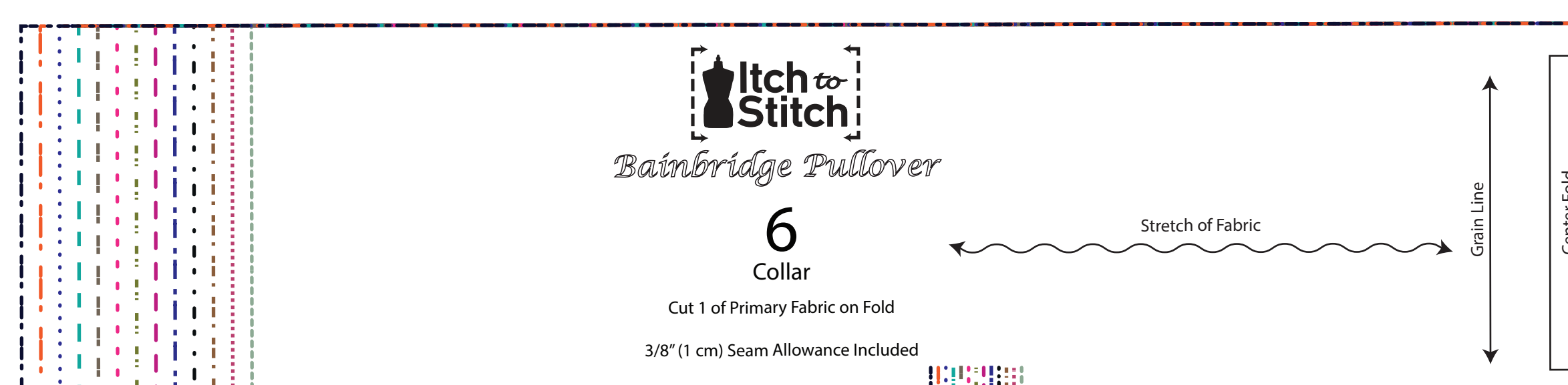
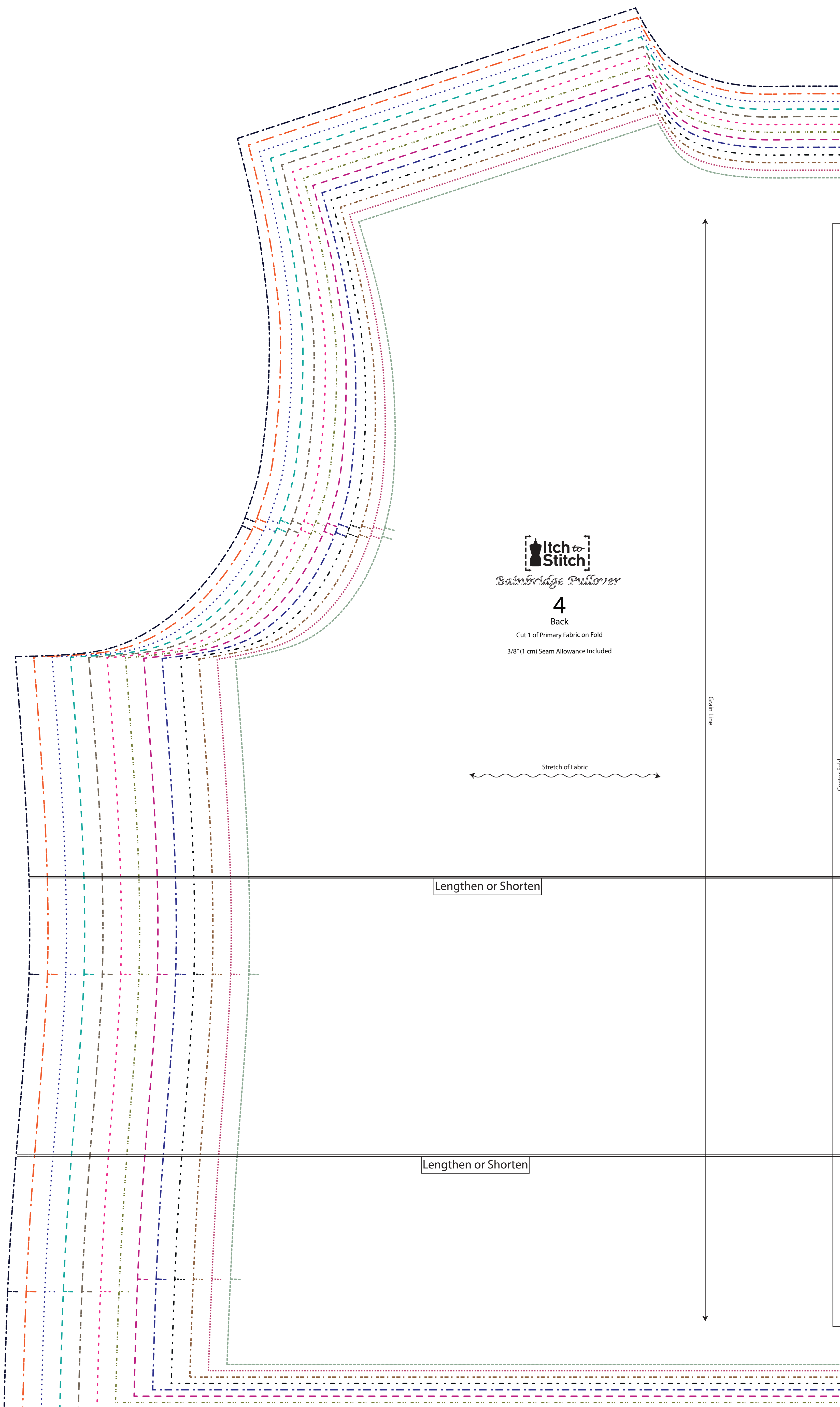
Bainbridge Pullover

Sewing Pattern
Size 16 - 40
Cup B, C, D & DD

© 2021 Itch to Stitch. All rights reserved. No part of this document may be reproduced, stored in a retrieval system, or transmitted in any form or by any means, electronic, mechanical, photocopying, recording, or otherwise, without prior written permission of Itch to Stitch.



Be sure to measure the 1" or 2.5 cm scaling square before cutting your fabric!

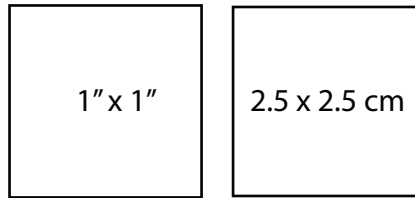




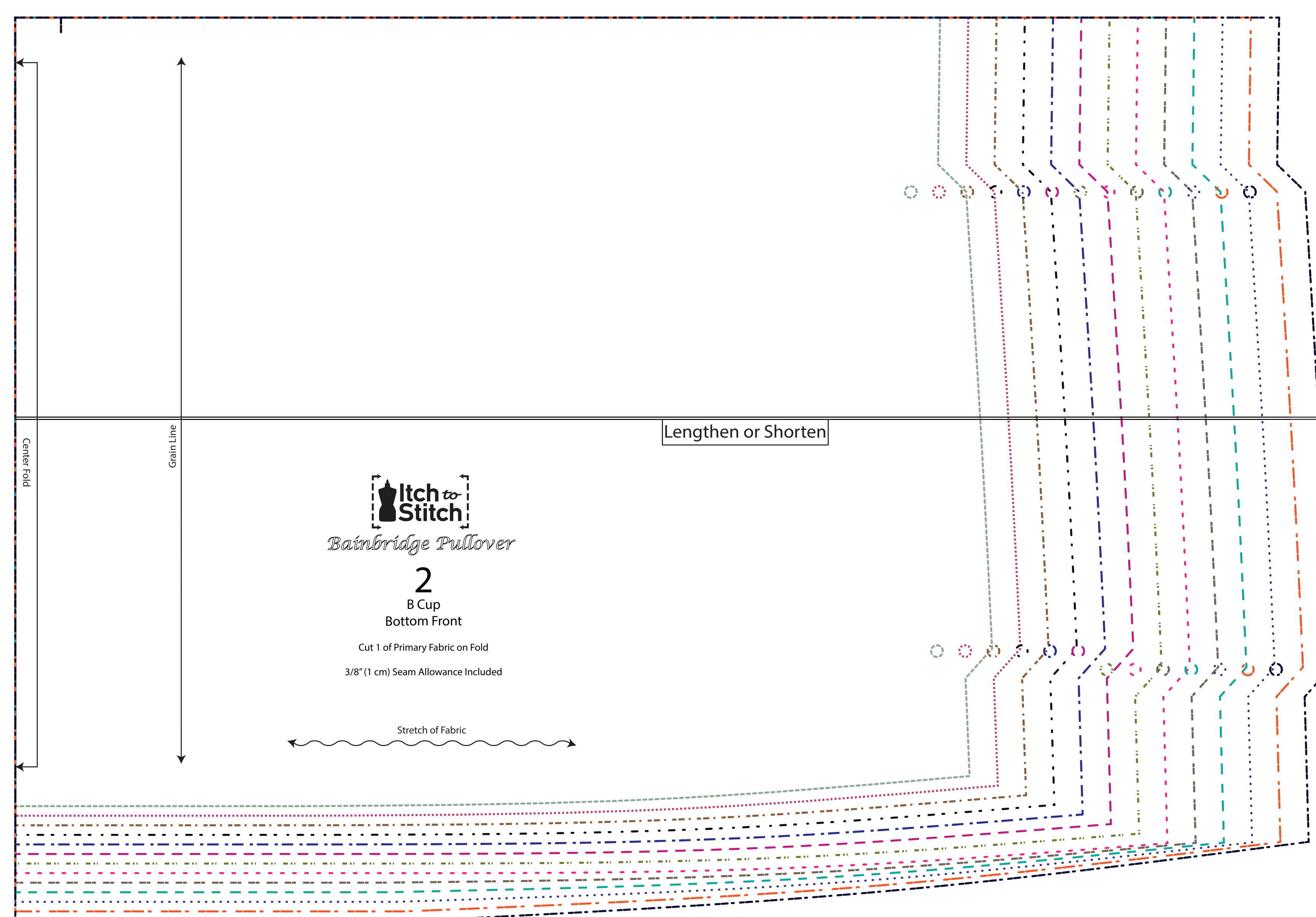
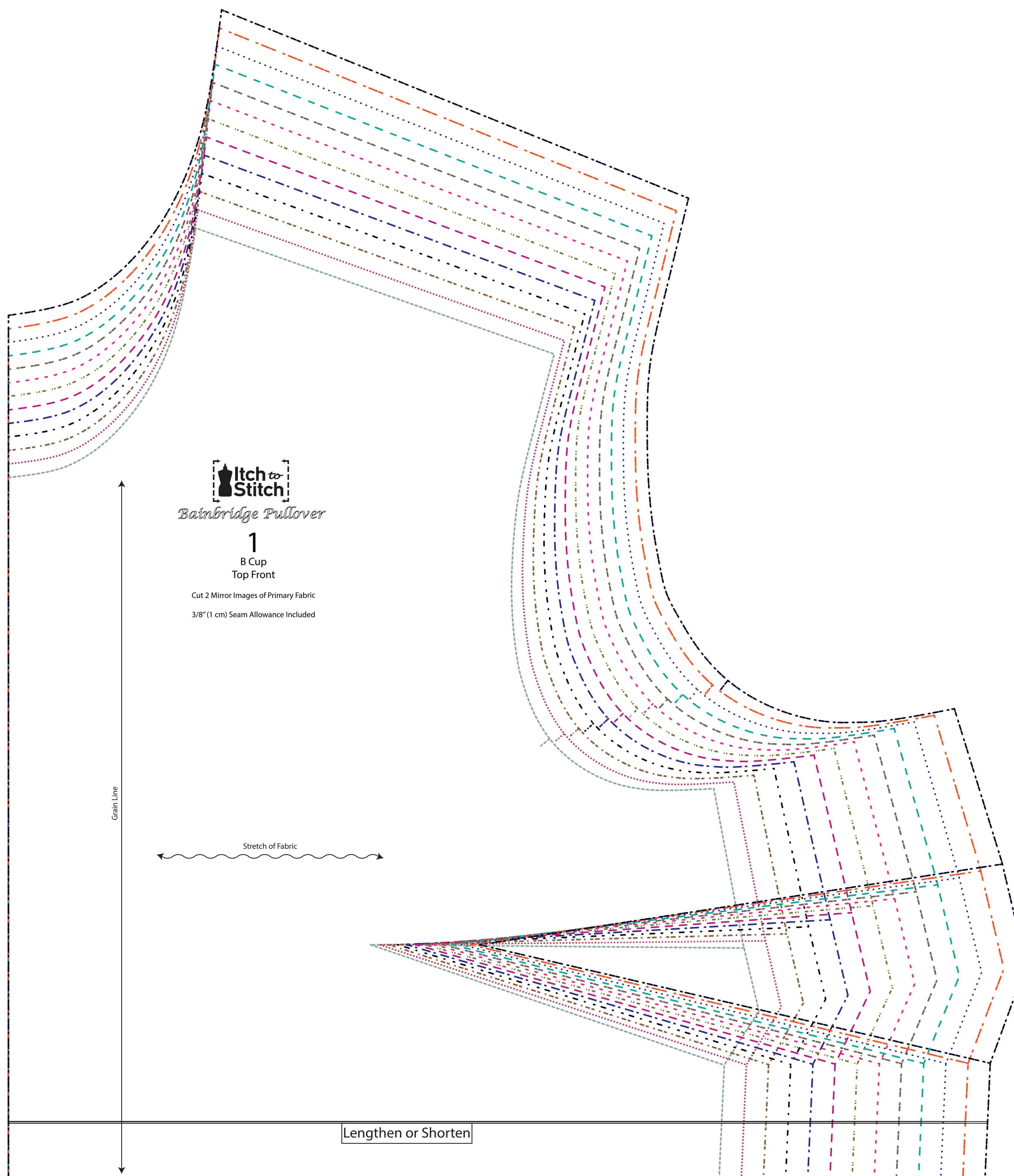
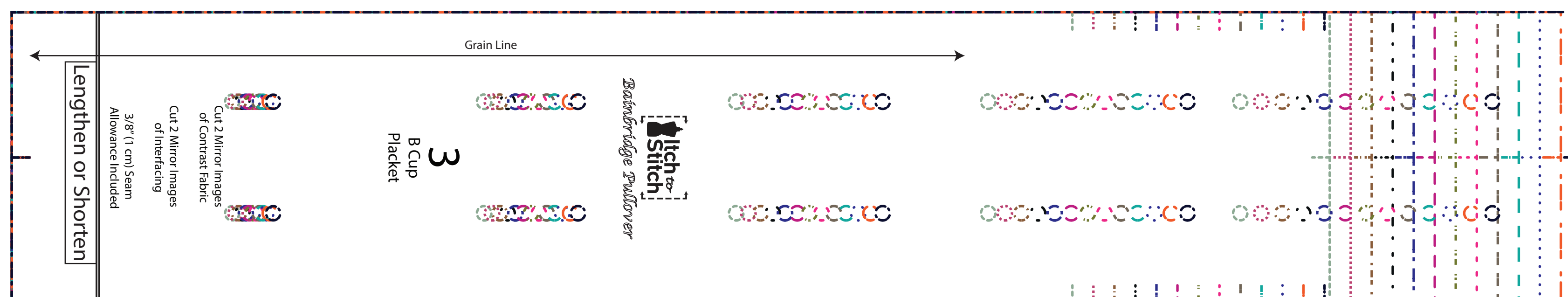
Bainbridge Pullover

Sewing Pattern
Size 16 - 40
Cup B, C, D & DD

© 2021 Itch to Stitch. All rights reserved. No part of this document may be reproduced, stored in a retrieval system, or transmitted in any form or by any means, electronic, mechanical, photocopying, recording, or otherwise, without prior written permission of Itch to Stitch.



Be sure to measure the 1" or 2.5 cm scaling square before cutting your fabric!

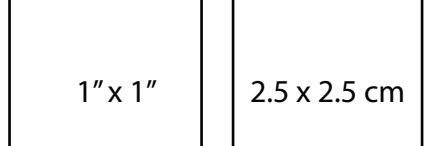




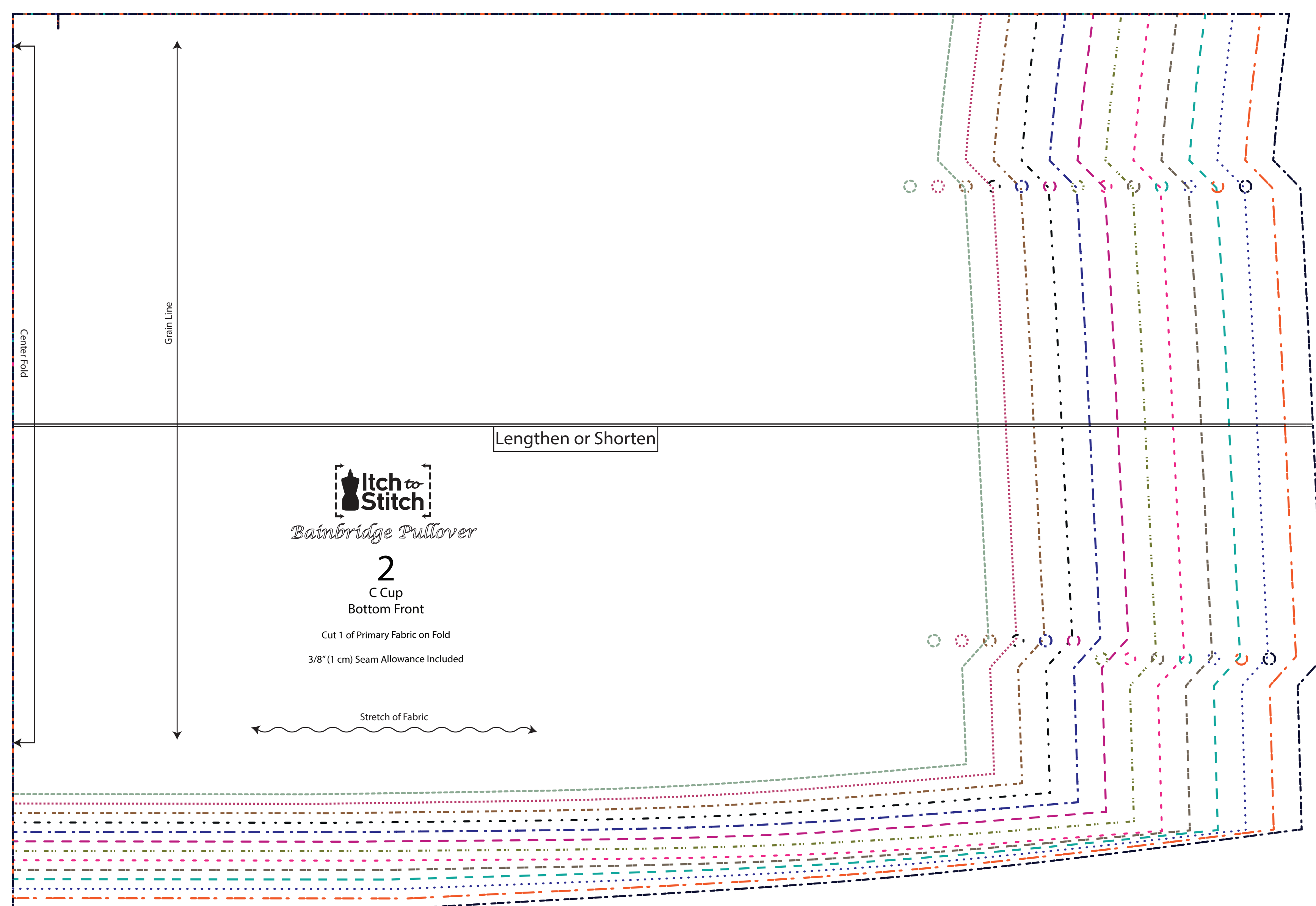
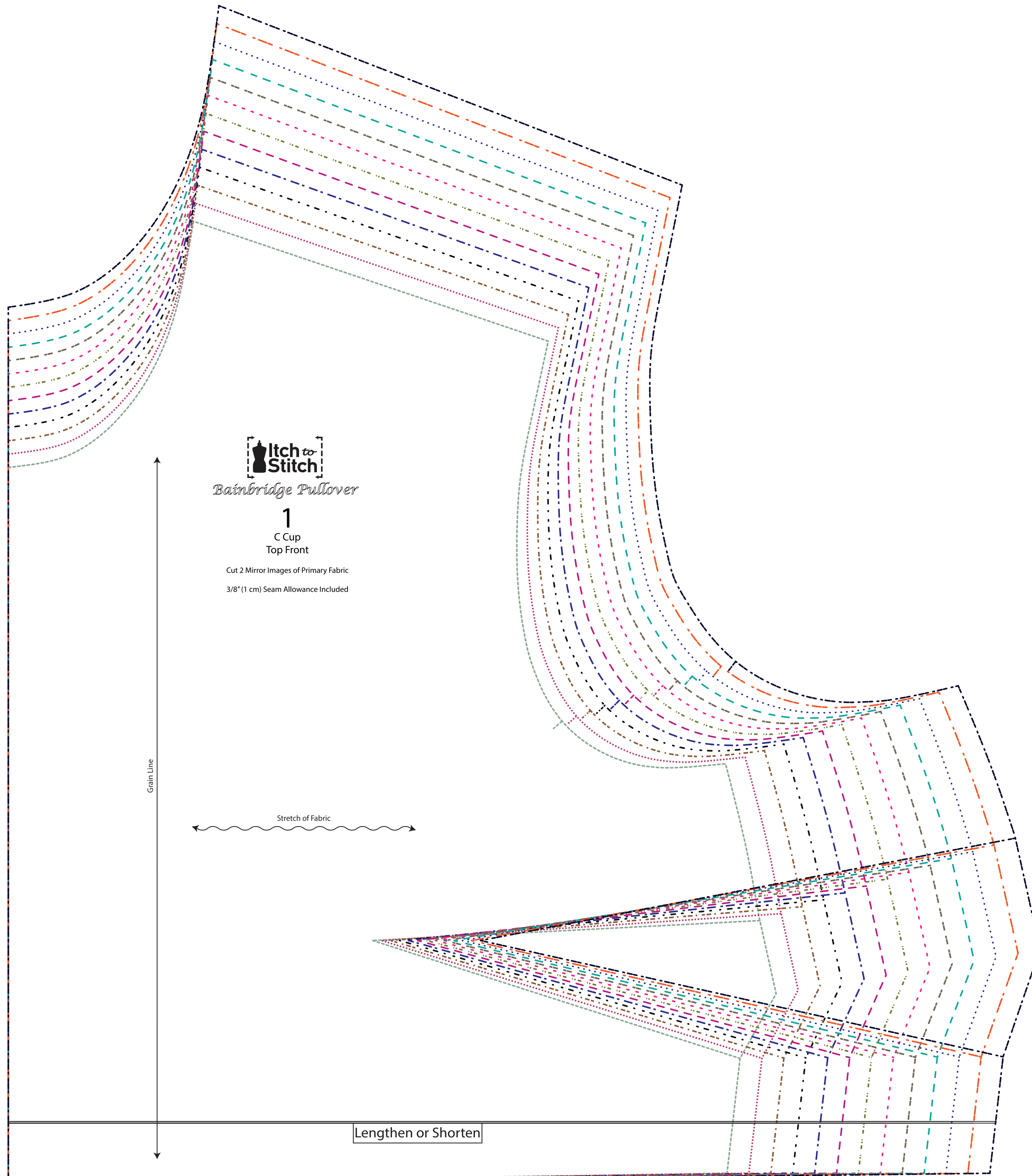
Bainbridge Pullover

Sewing Pattern
Size 16 - 40
Cup B, C, & DD

© 2021 by Itch to Stitch. All rights reserved. No part of this document may be reproduced, stored in a retrieval system, or transmitted in any form or by any means, electronic, mechanical, photocopying, recording, or otherwise, without prior written permission of Itch to Stitch.



Be sure to measure the 1" or 2.5 cm scaling square before cutting your fabric!

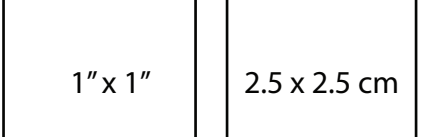




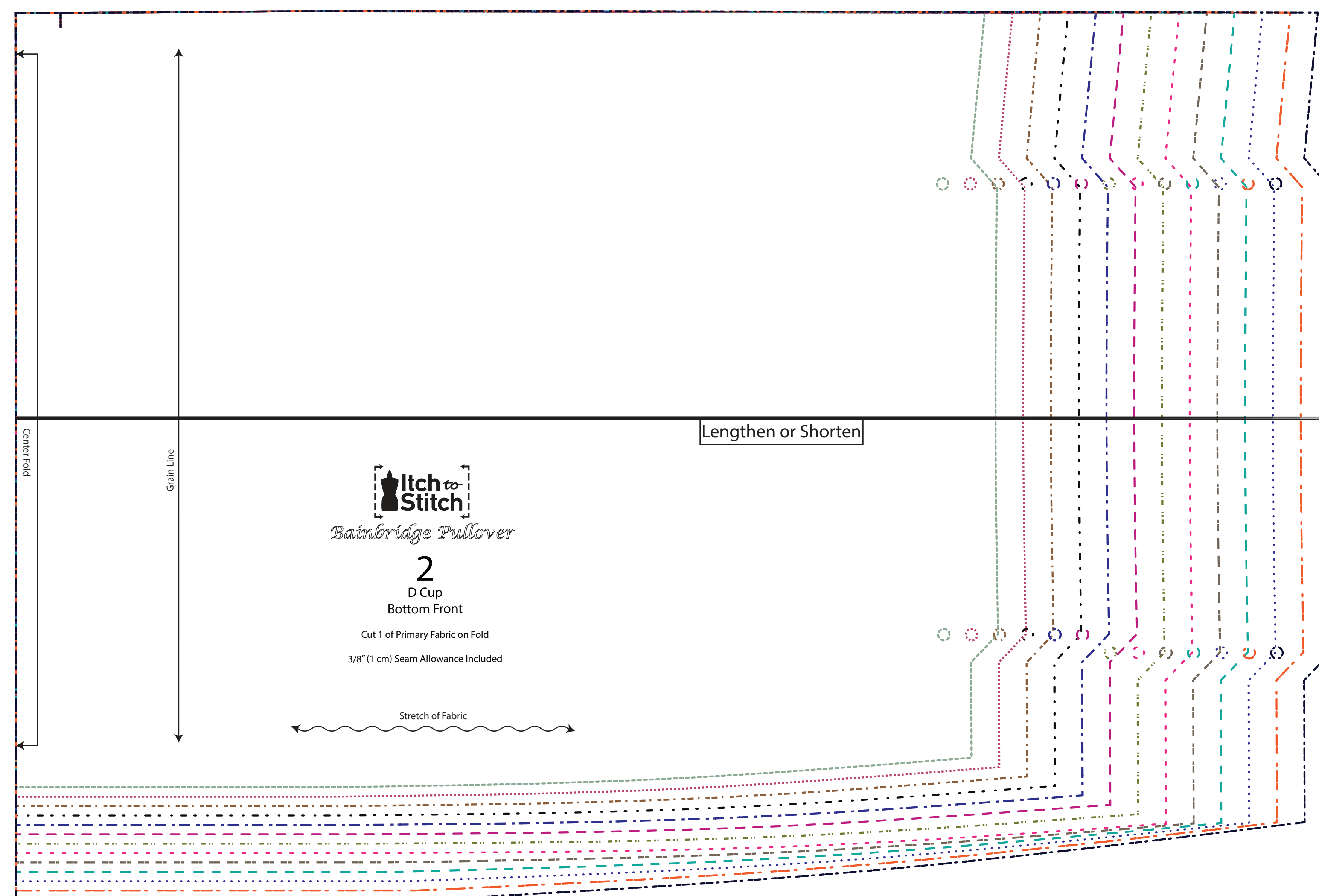
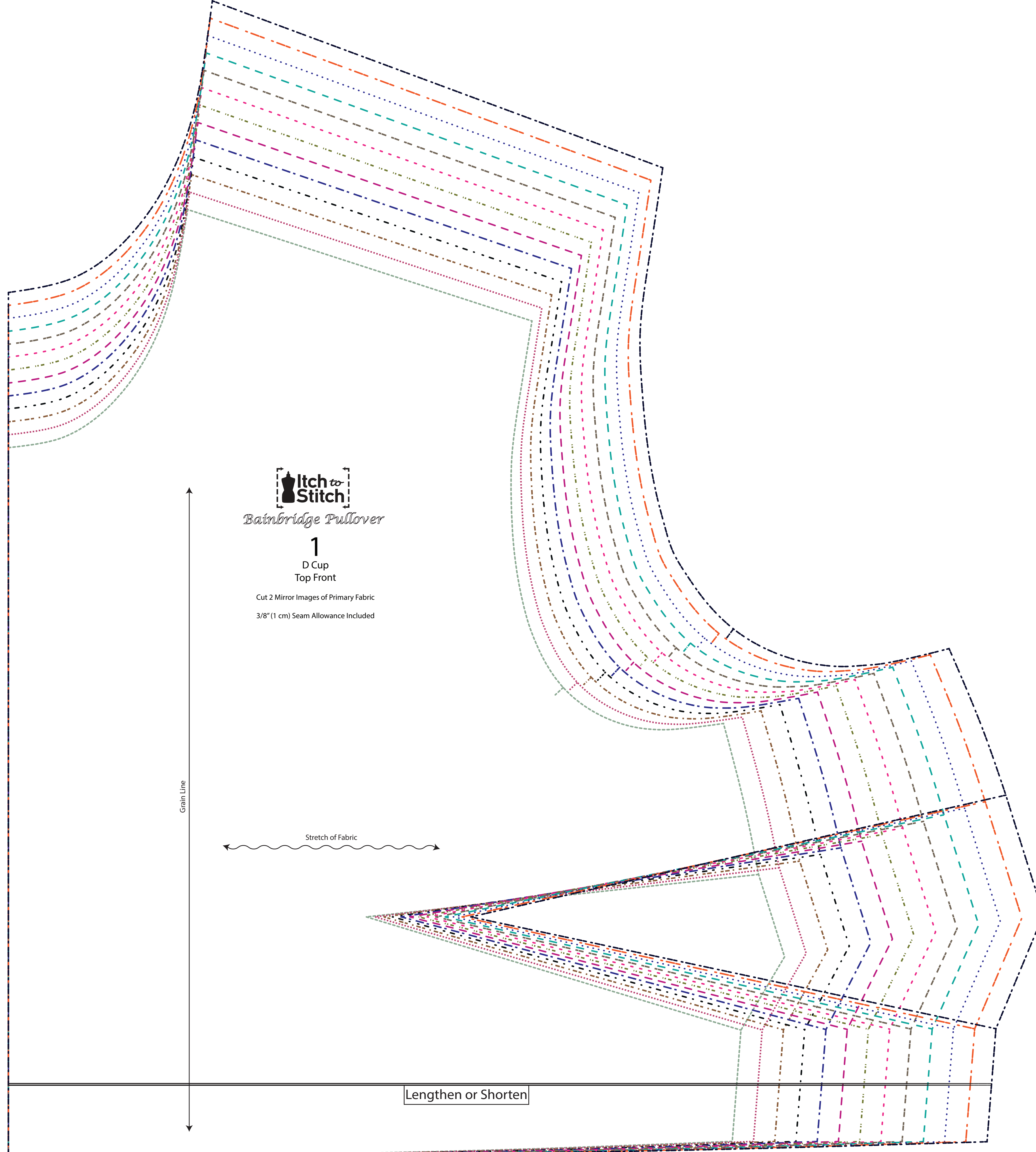
Bainbridge Pullover

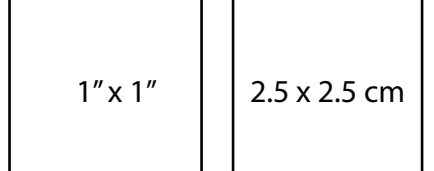
Sewing Pattern
Size 16 - 40
Cup B, C, D & DD

© 2021 Itch to Stitch. All rights reserved. No part of this document may be reproduced, stored in a retrieval system, or transmitted in any form or by any means, electronic, mechanical, photocopying, recording, or otherwise, without prior written permission from Itch to Stitch.



Be sure to measure the 1" or 2.5 cm scaling square before cutting your fabric!





Be sure to measure the 1" or 2.5 cm scaling square before cutting your fabric!

