



Pattern Apothecary

The “Aster” Tee

Supplies

- Fabric
Width: 140cm/55”
Length: 100cm/40” - 150cm/60” depending on the variation
See page 4 for exact measurements
- Matching thread
- Optional: Double needle for hem

Fabric suggestion

For this project I recommend to use stretchy/knit fabric.

Seam allowance

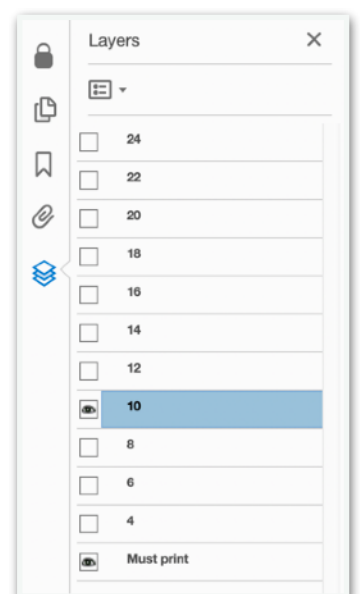
Seam allowance is already included (1cm/0.4”)

Printing

Each size is placed on a different layer in PDF. Select your size and “must print” layer.

Print actual size, do not scale. Start by printing only the first page of the pattern and check the square measurements. If it is correct print the rest of the pattern. (Before printing see page 3 for printing layout and individual pattern pieces)

**This pattern is for personal use only, do not use for commercial purposes.
Copyright 2023**



Size chart

Body measurements CM

Size	4	6	8	10	12	14	16	18	20	22	24
Bust	82	86	90	94	98	102	106	110	114	118	122
Waist	62	66	70	74	78	82	86	90	94	98	102
Hips	90	94	98	102	106	110	114	118	122	126	130

Body measurements INCH

Size	4	6	8	10	12	14	16	18	20	22	24
Bust	32.5	34	35.5	37	38.5	40	41.5	43	44.5	46	47.5
Waist	24.5	26	27.5	29	30.5	32	33.5	35	36.5	38	39.5
Hips	35.5	37	38.5	40	41.5	43	44.5	46	47.5	49	50.5

Finished garment measurements CM

Size	4	6	8	10	12	14	16	18	20	22	24
Bust	67.2	71.2	75.2	79.2	83.2	87.2	91.2	95.2	99.2	103.2	107.2
Waist	64.8	68.8	72.8	76.8	80.8	84.8	88.8	92.8	96.8	100.8	104.8

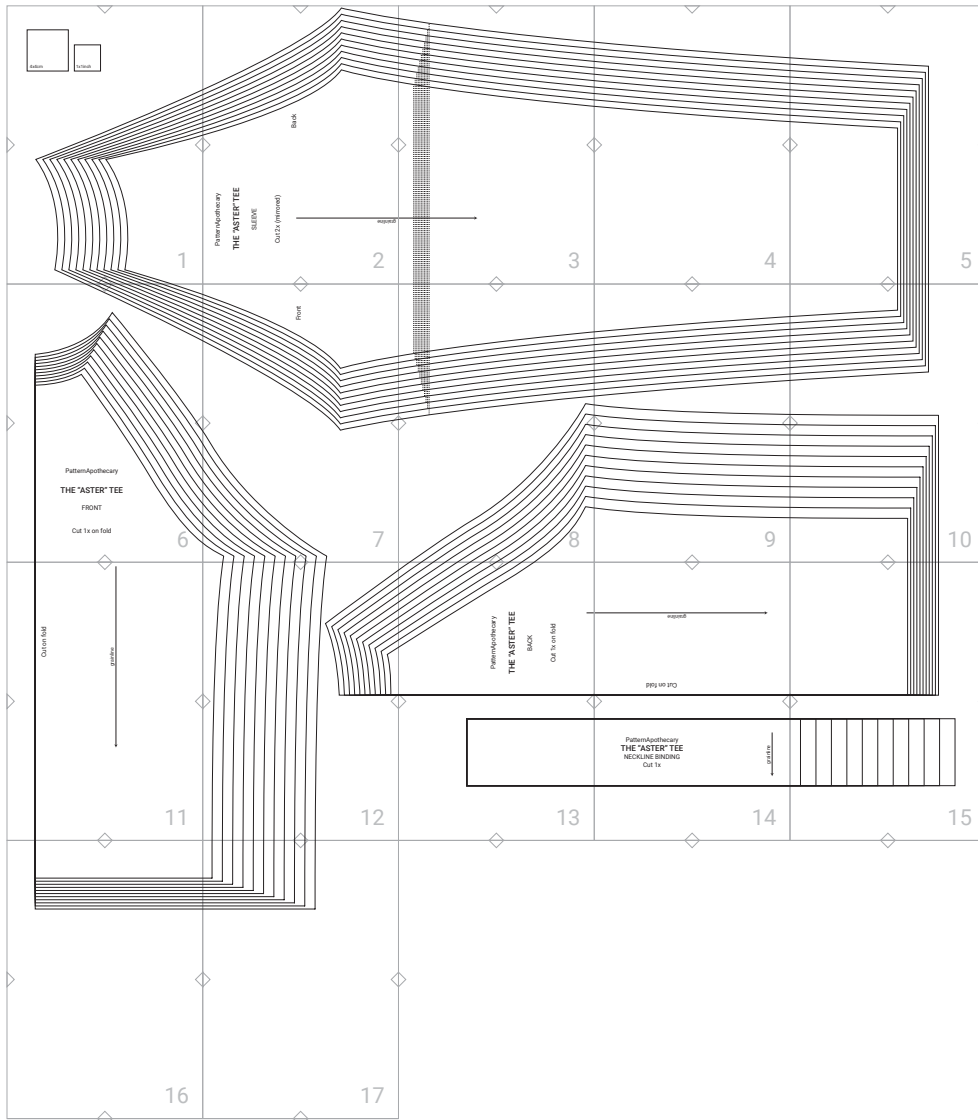
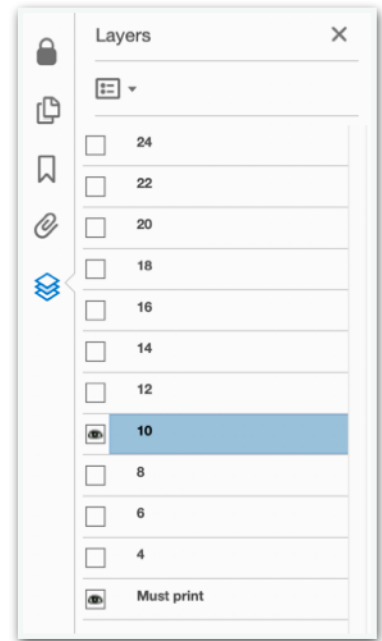
Finished garment measurements INCH

Size	4	6	8	10	12	14	16	18	20	22	24
Bust	26.5	28	29.6	31.2	32.8	34.3	35.9	37.5	39.1	40.6	42.2
Waist	25.5	27.1	28.7	30.2	31.8	33.4	35	36.5	38.1	39.7	41.3

A4 & Us Letter PDF Print

Each size is placed on a different layer in PDF. Select your size and “must print” layer.

Print actual size, do not scale. Start by printing only the first page of the pattern and check the square measurements. If it is correct print the rest of the pattern.



Recommended cutting layout

Width: 140cm/55"

Length:

When sewing one coloured version

All pieces:

Short sleeve - 100cm/40"

Long sleeve - 150cm/60"

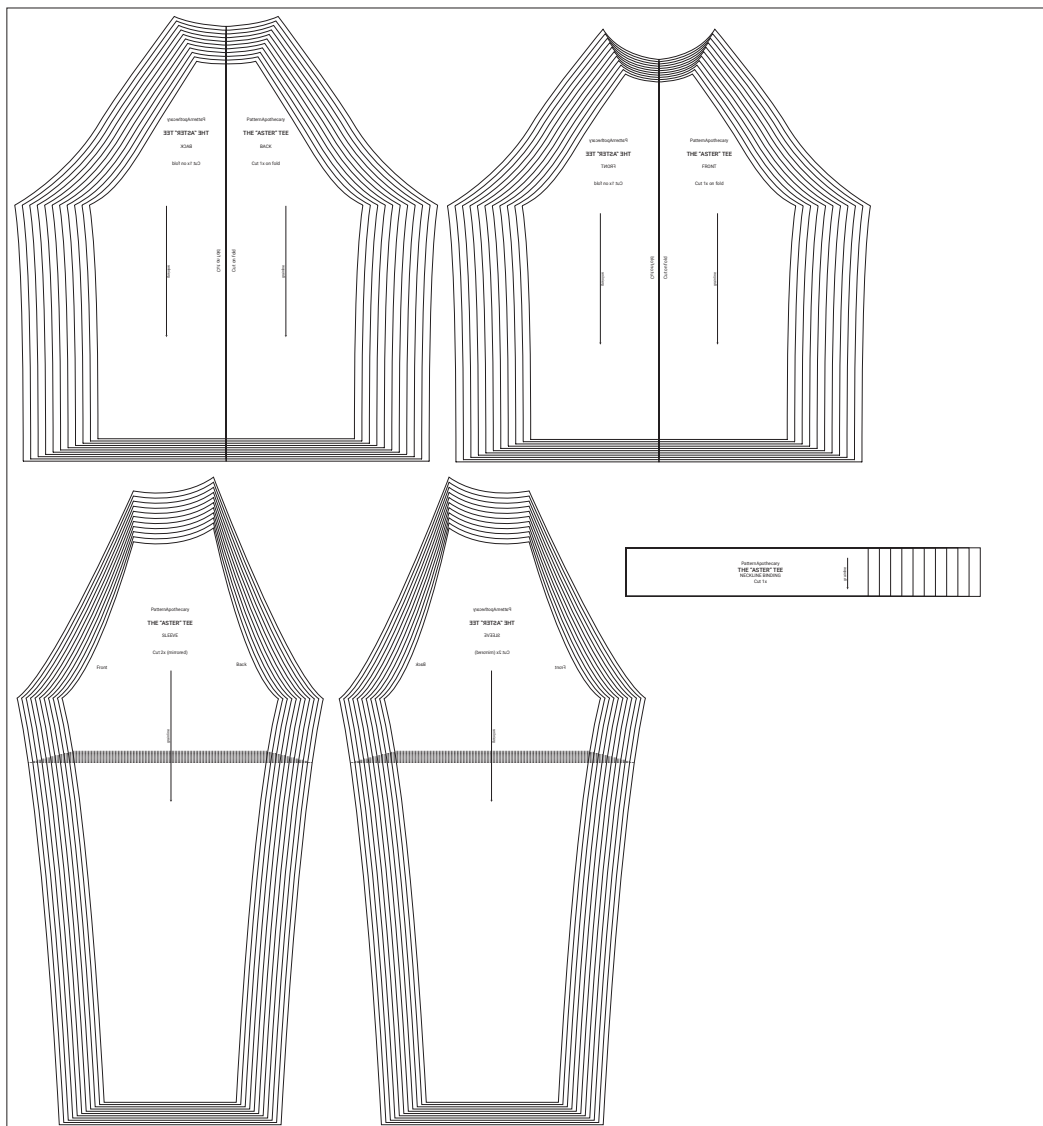
When sewing two coloured version

Bodice - 60cm/24"

Sleeves:

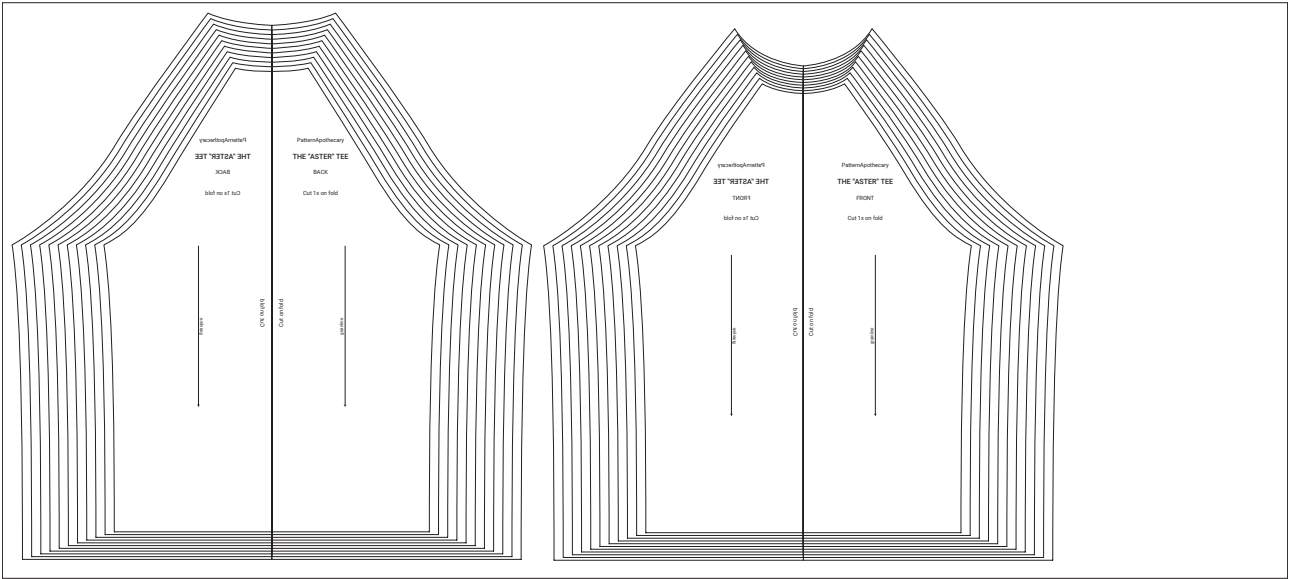
Short sleeve - 40cm/16"

Long sleeve - 90cm/36"

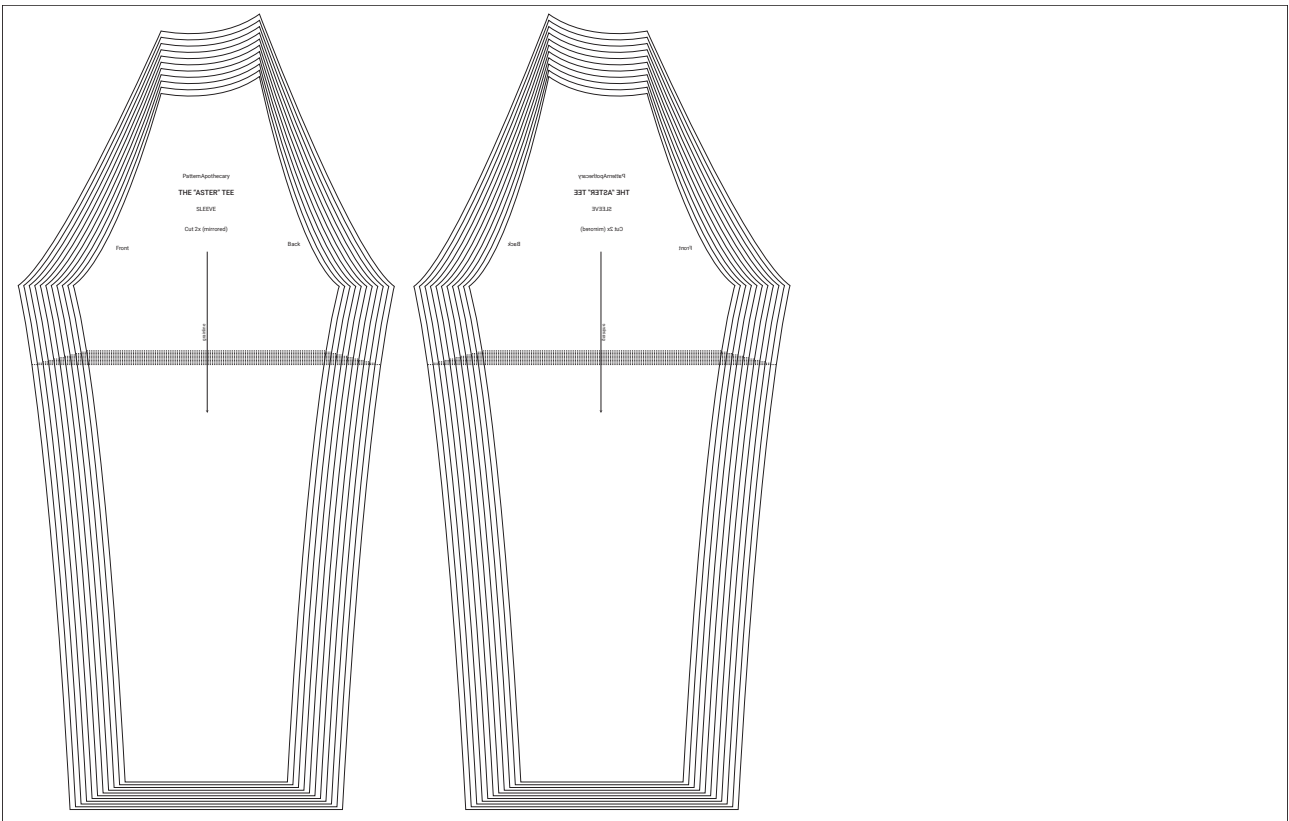


Short sleeve - 100cm/40"

Long sleeve - 150cm/60"



60cm/24"



Short sleeve - 40cm/16"

Long sleeve - 90cm/36"

Sewing instructions

HOW TO SEW STRETCHY FABRIC

To sew stretchy fabric u need to use stretchy stitch, for example:

- Zig-zag stitch on sewing machine - use for attaching pieces together and hemming
- Double/twin needle - you can use double needle when hemming to create two rows of stitching
- Overlocker - use for attaching pieces together, you can also overlock raw edges before hemming for a professional finish
- DO NOT stretch fabric when sewing (unless creating a lettuce hem)
- Test your stitches on a scrap fabric as you might need to adjust tension



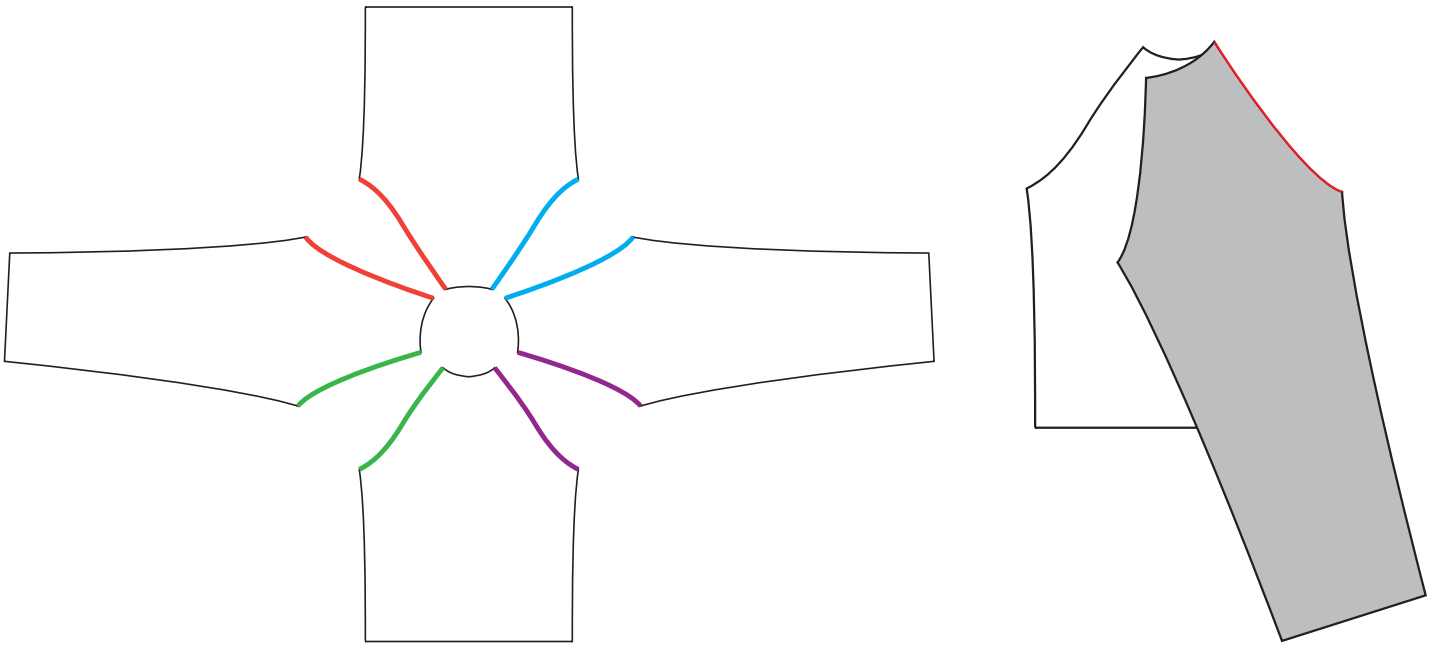
Hem by overlocking the edge and topstitching using a double needle



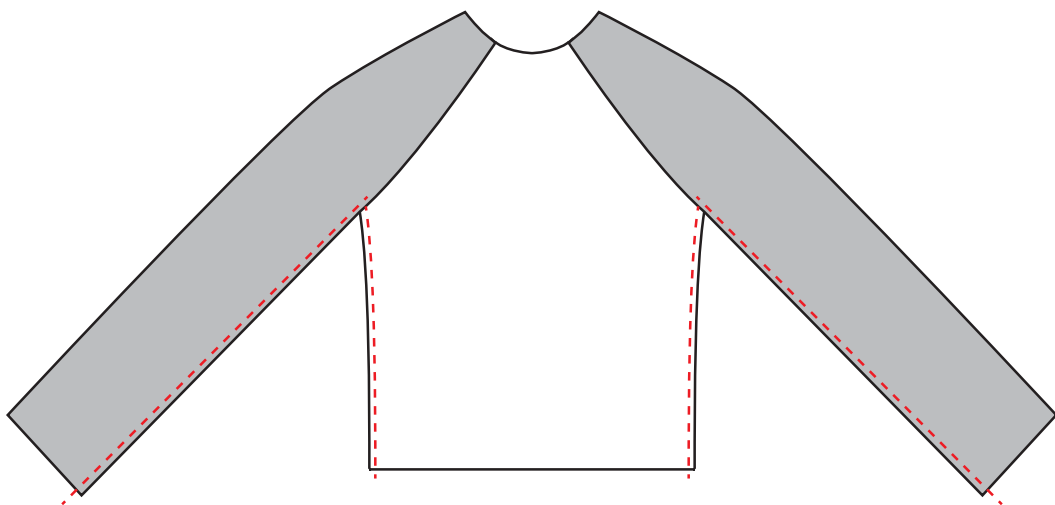
Hem using a zig-zag stitch

BODICE

1. Attach the front side of the sleeve to the front bodice right sides together, then sew using a zig-zag stitch or an overlocker
2. Repeat with both sleeves
3. Attach the back side of the sleeve to the back bodice right sides together, then sew using a zig-zag stitch or an overlocker
4. Repeat with both sleeves

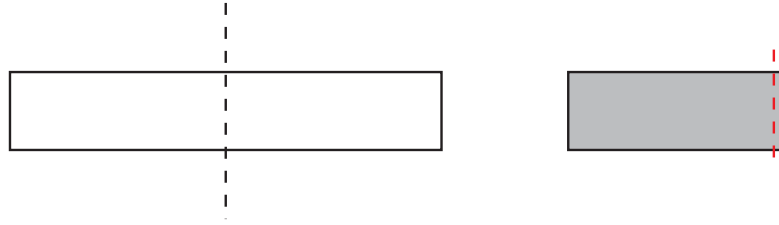


5. Sew the side seams right sides together using a zig-zag stitch or an overlocker

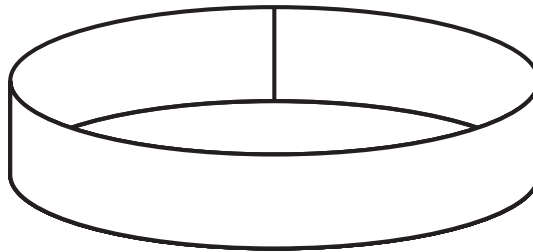


NECKLINE

6. Mark the centre of the “neckline binding”
7. Fold the “neckline binding” right sides together and sew the short edges, use a zigzag stitch or an overlocker (try on the neckline binding, you should be able to put it comfortably over your head, if it is too small cut again a wider piece, this can happen if the fabric isn't stretchy enough - in such case you can adjust the neckline of the shirt as well for comfortable wear)



8. Fold the “neckline binding” wrong sides together and pin



9. Mark the centre of the back neckline on the shirt
10. Mark the centre of the front neckline on the shirt
11. Align the seam of the neckline piece with the marked centre back of the shirt (pin to the right side of the shirt, it is easier when the shirt is turned wrong side out)
12. Align the marked centre of the neckline piece with the marked centre front of the shirt
13. Stretch the neckline binding to match the neckline and pin (The neckline binding is a bit shorter than the neckline of the shirt so it wouldn't stick out when worn)



14. Sew using a zigzag stitch or an overlocker

FINISH

15. Hem the shirt using a zigzag stitch or a double needle, you can overlock the edges first for a professional finish but that is optional

16. Done!



Finished result (wrong side)



Finished result (right side)