

PatternApothecary

THE "ASTER" TEE

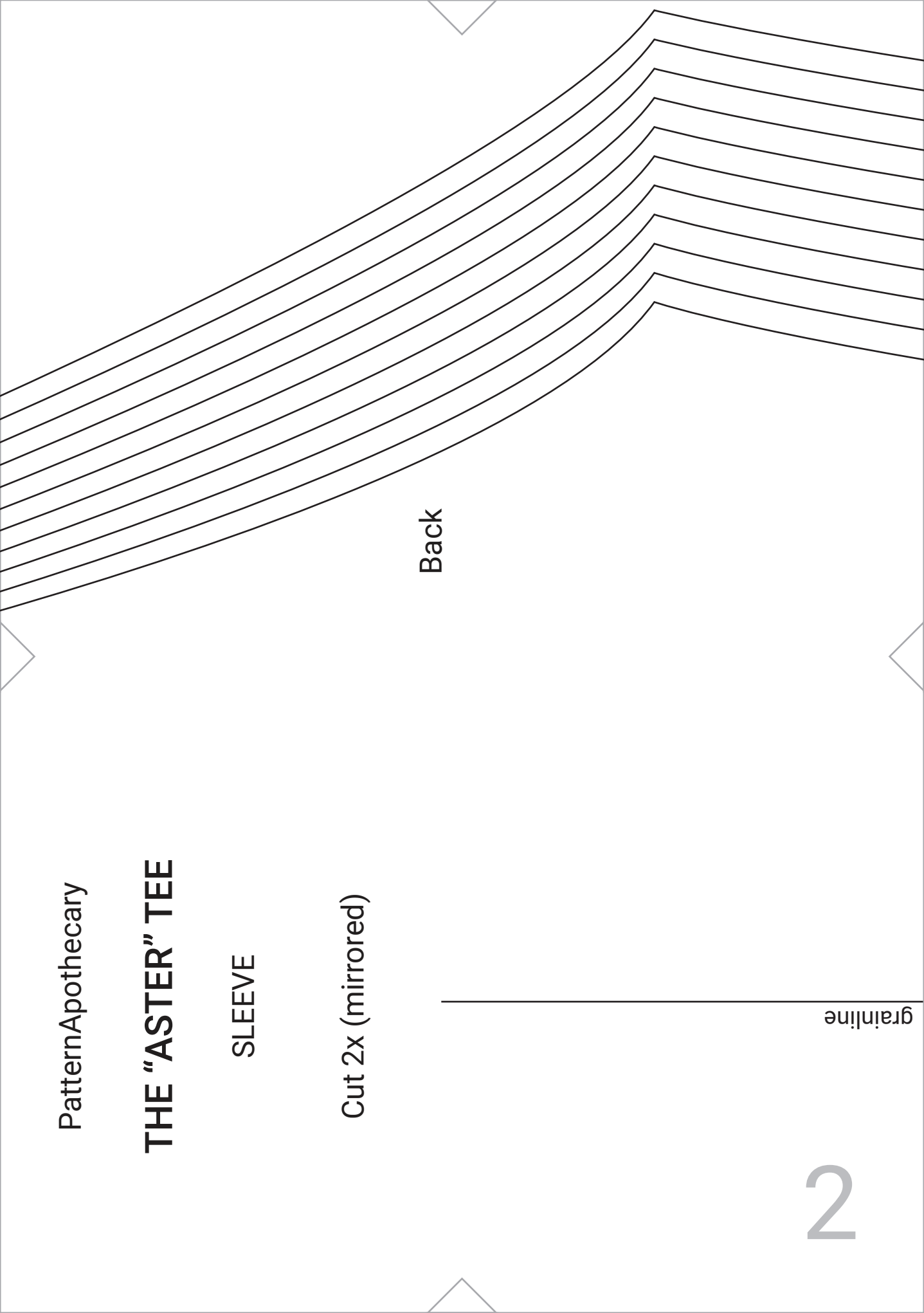
SLEEVE

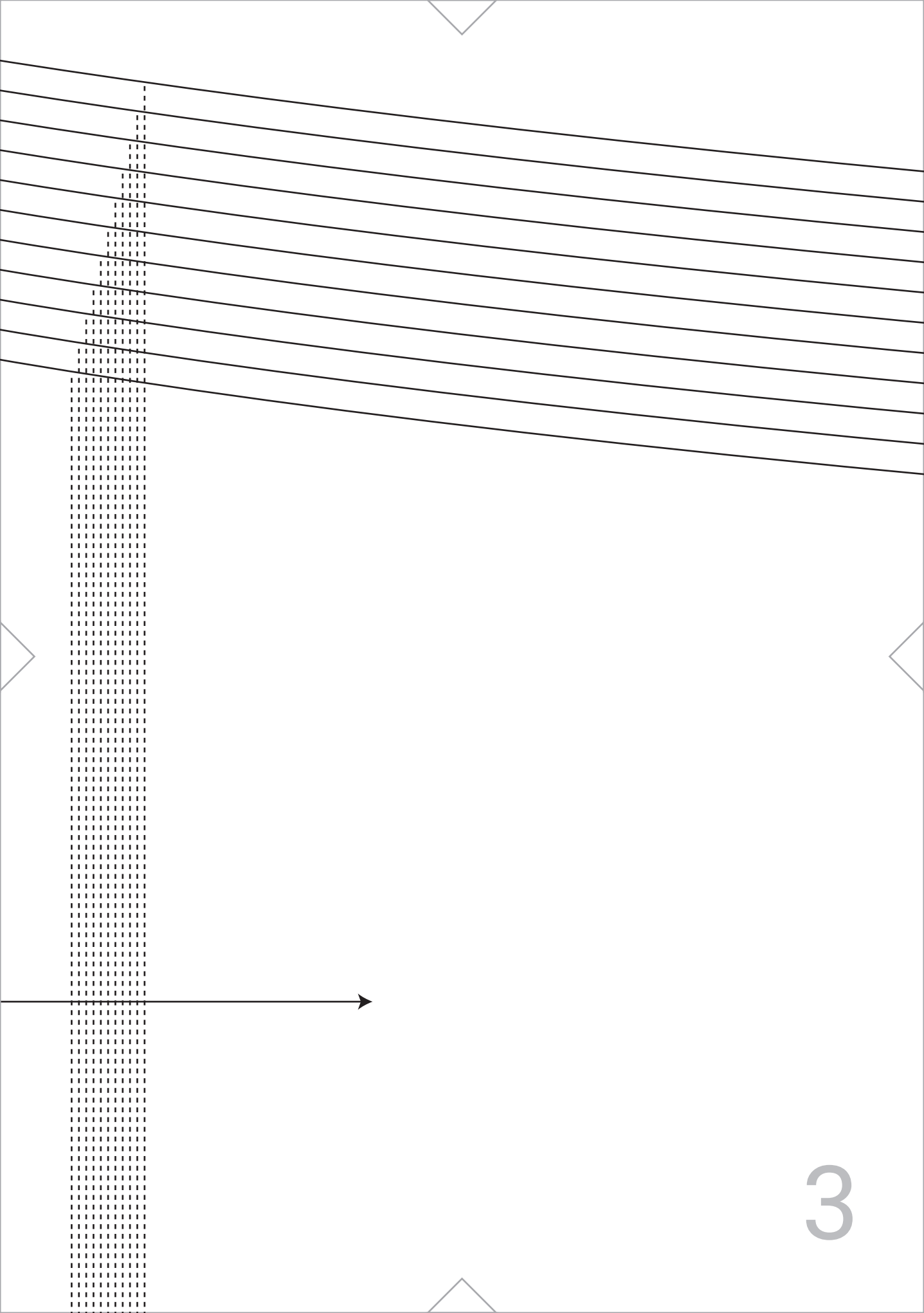
Cut 2x (mirrored)

Back

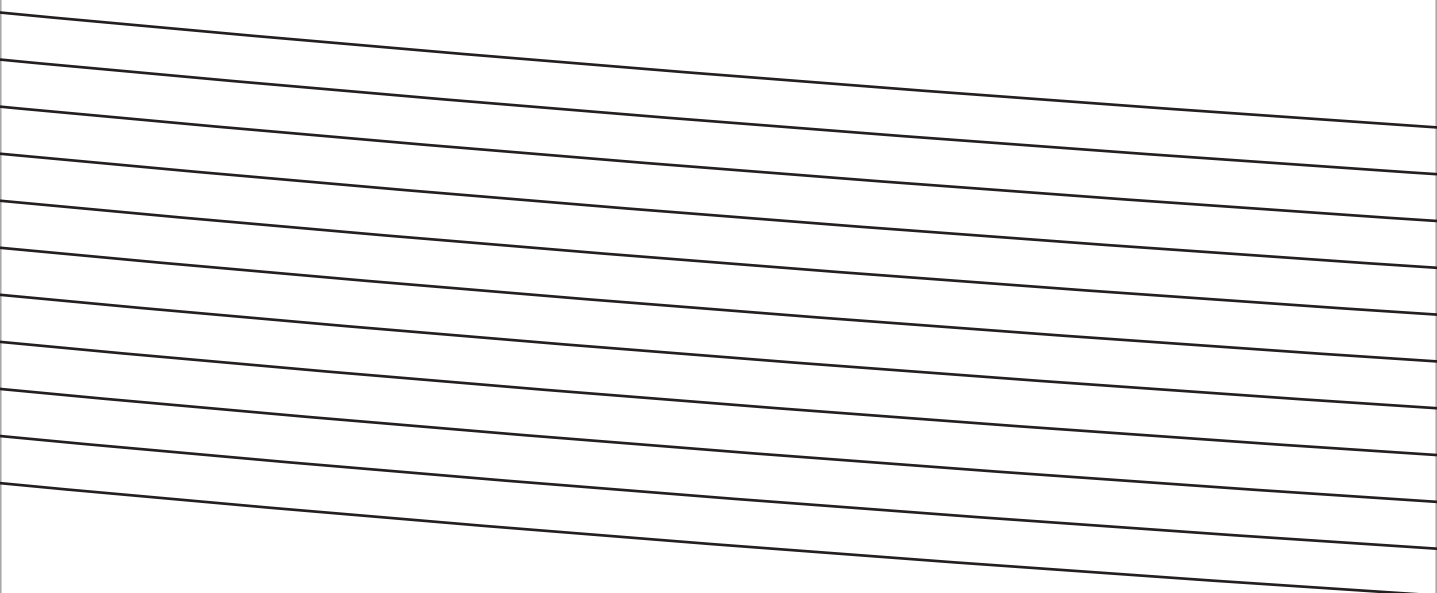
grainline

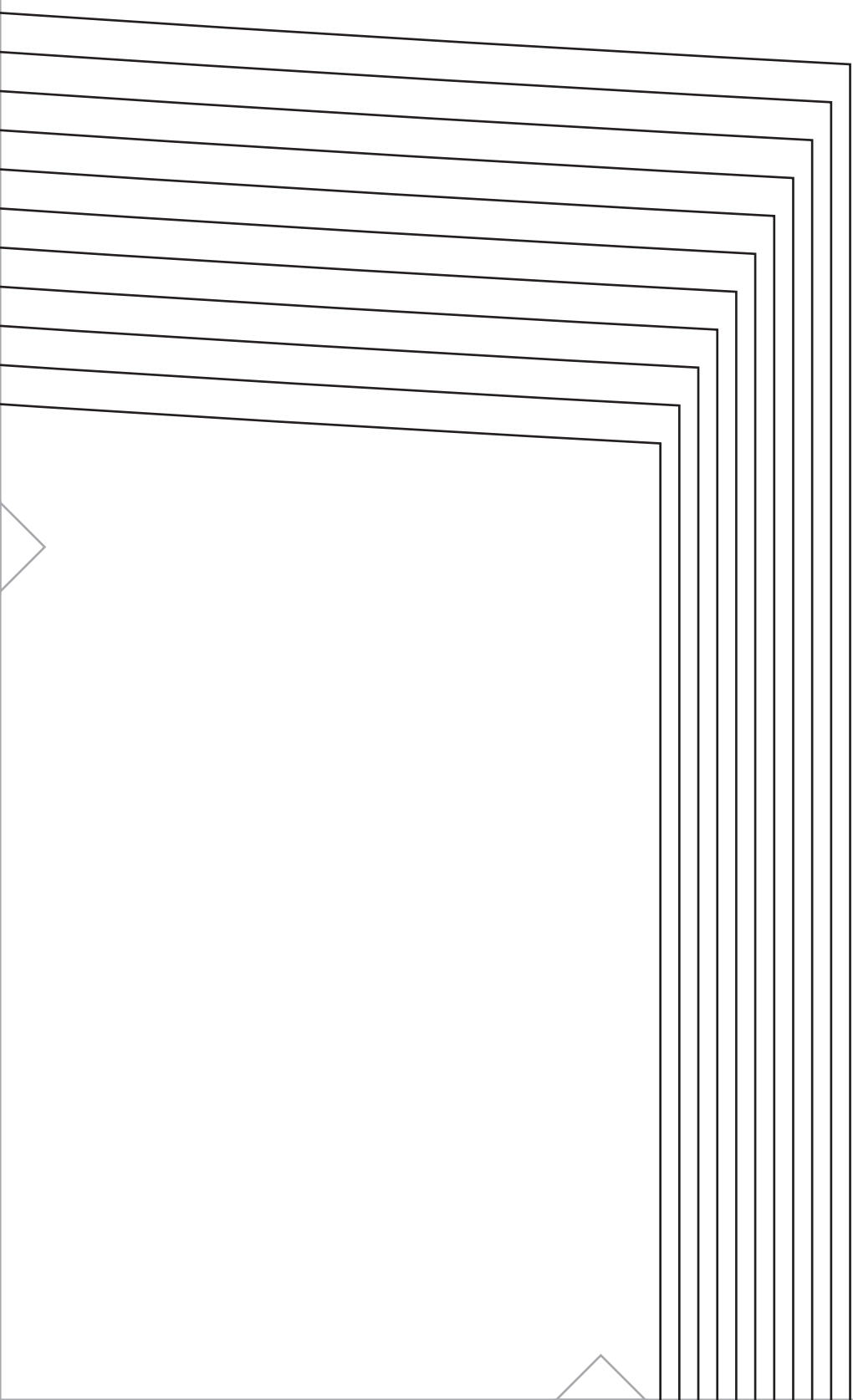
2

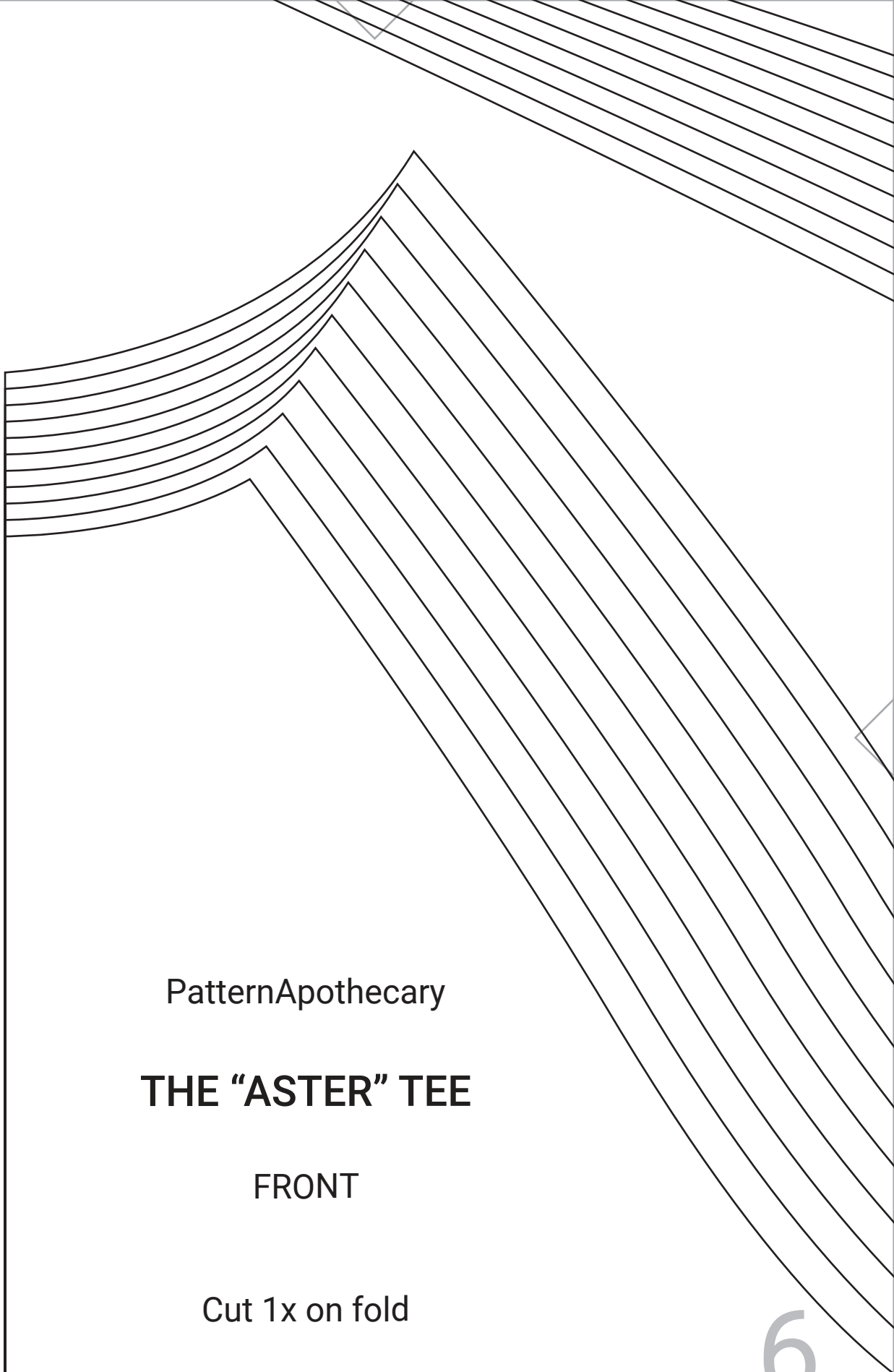




3







PatternApothecary

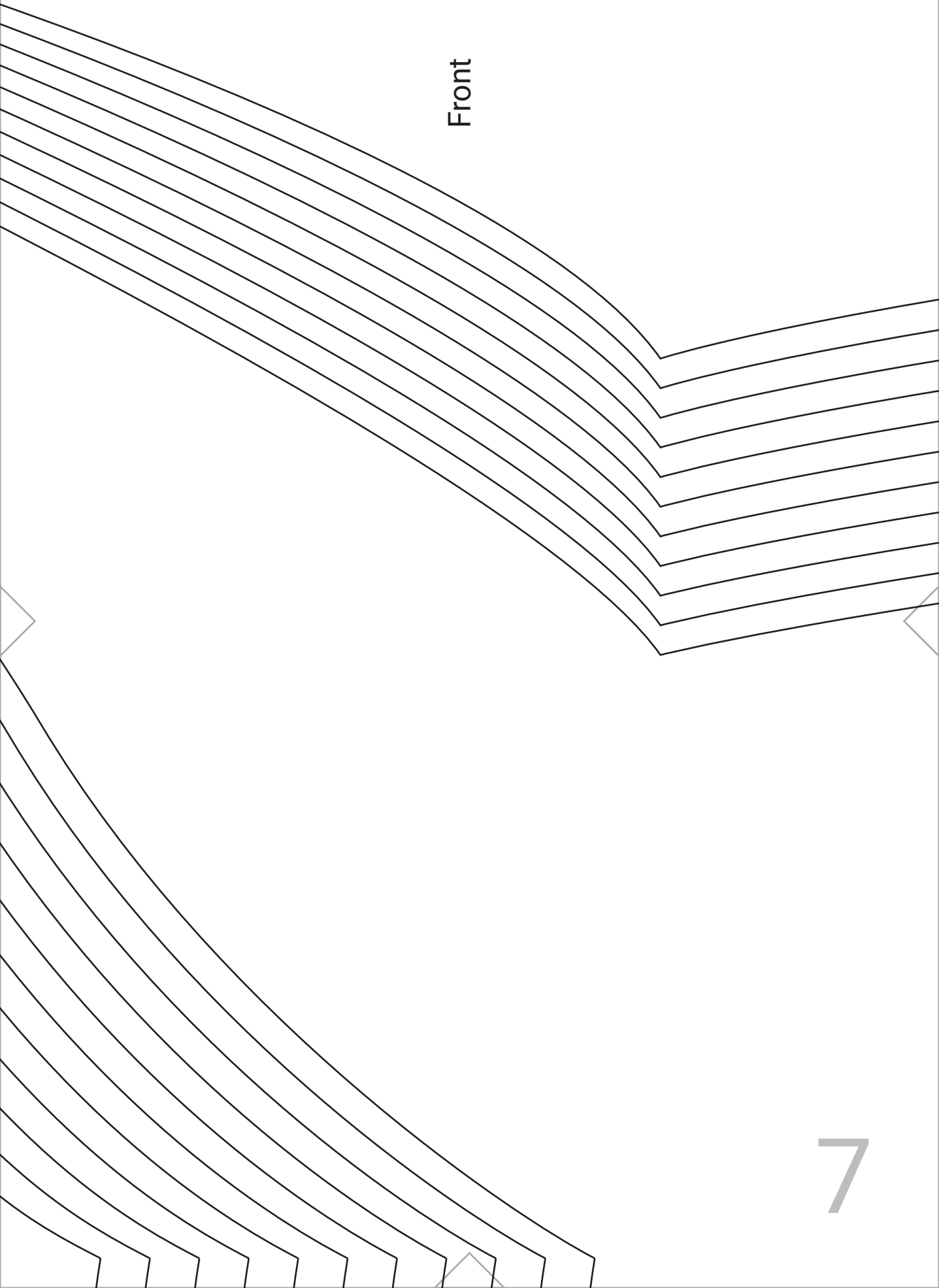
THE "ASTER" TEE

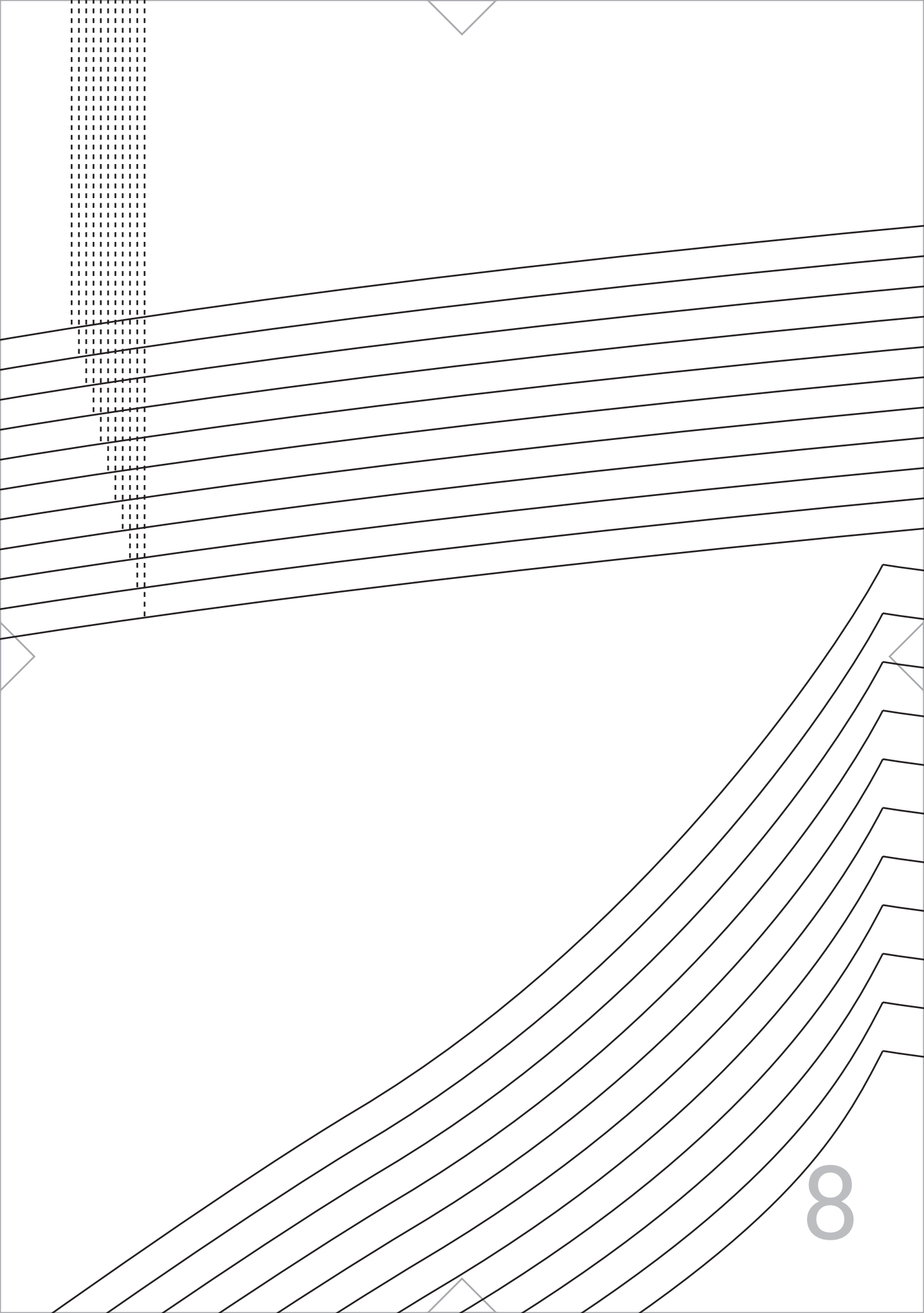
FRONT

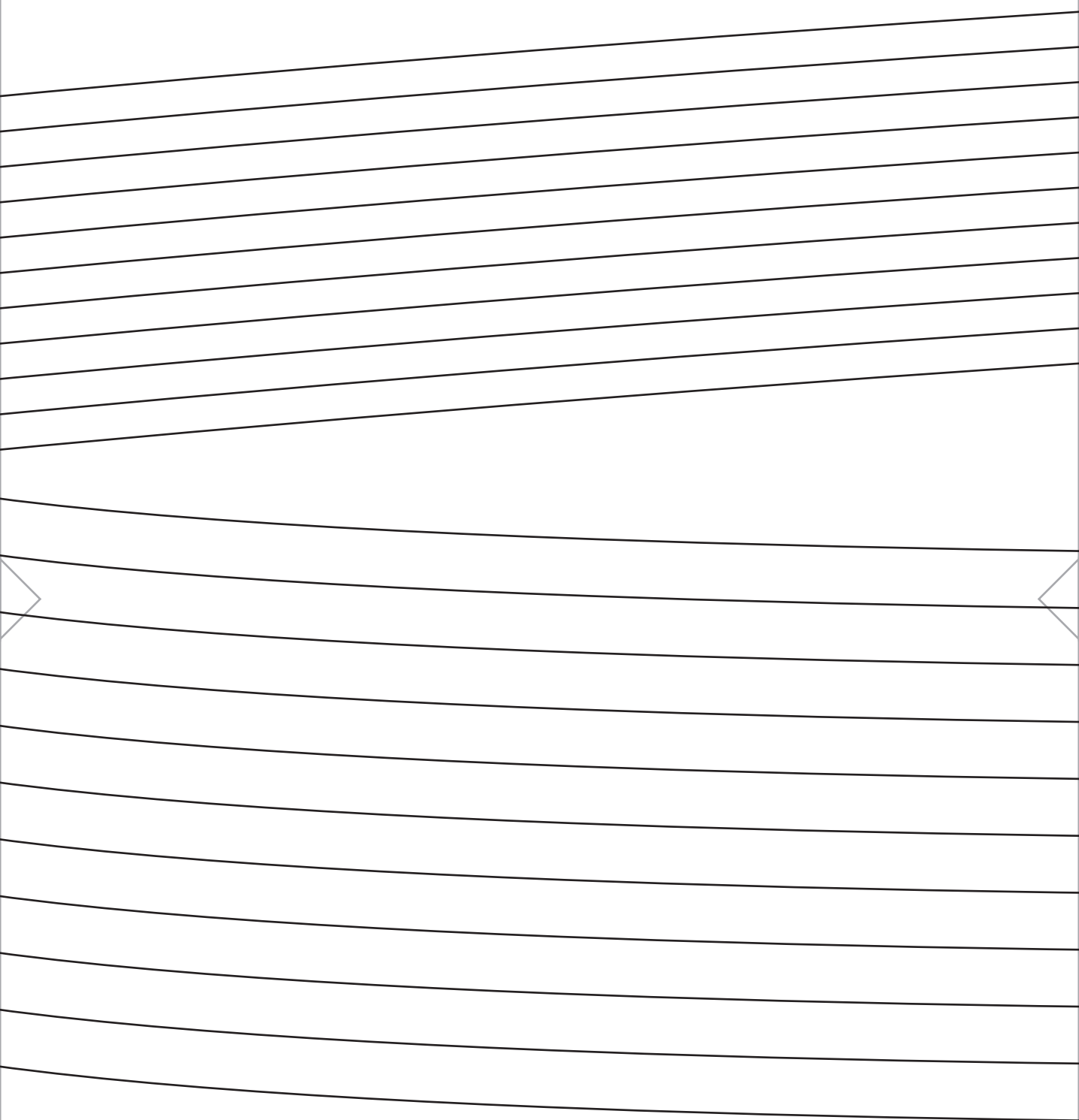
Cut 1x on fold

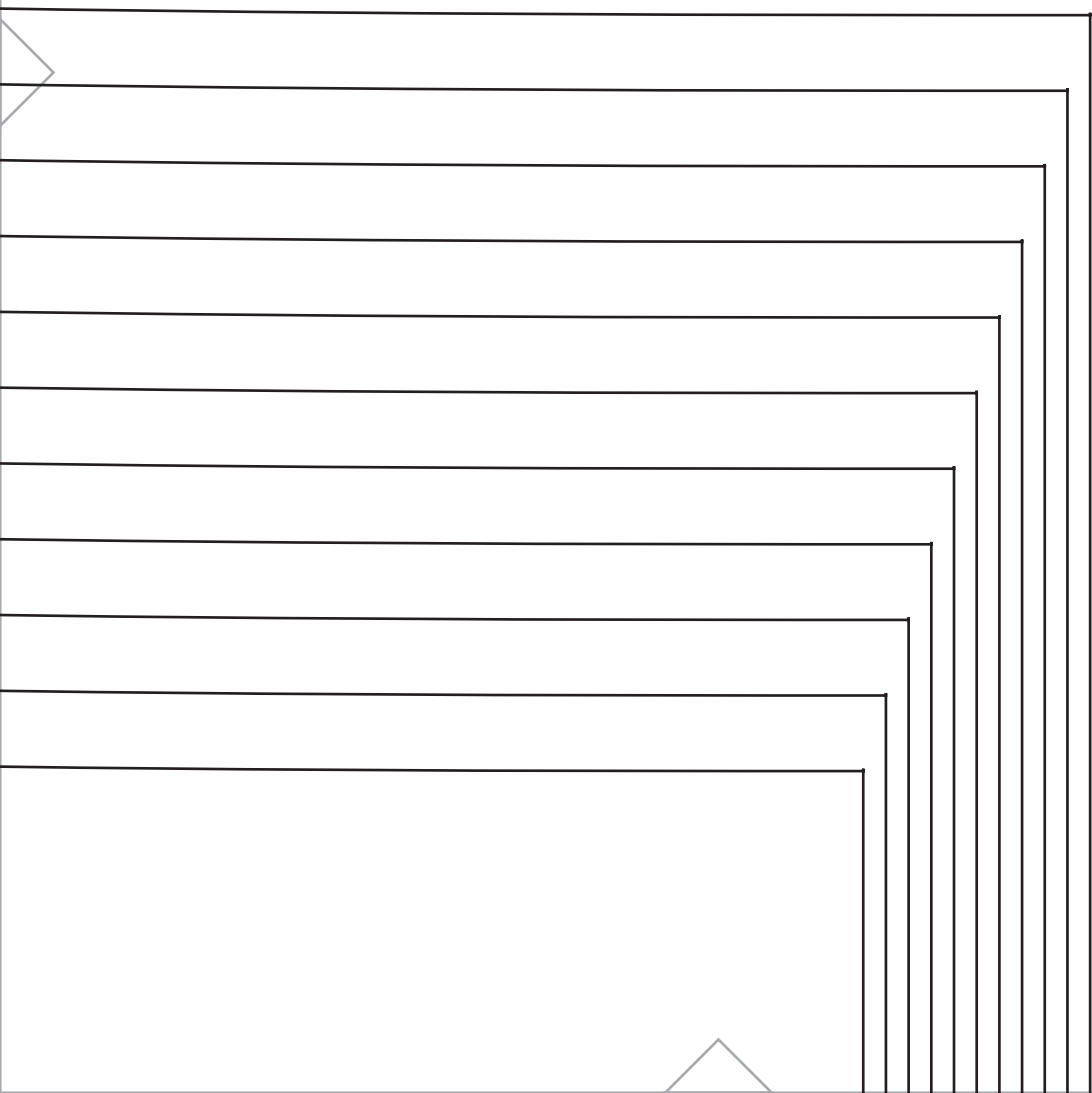
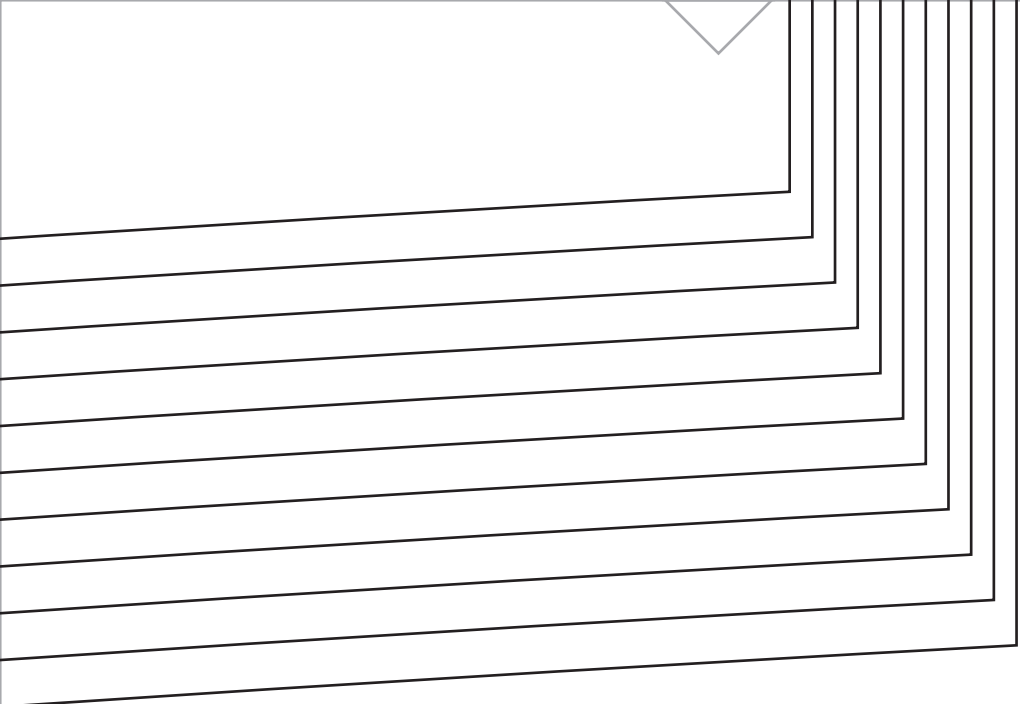
6

Front





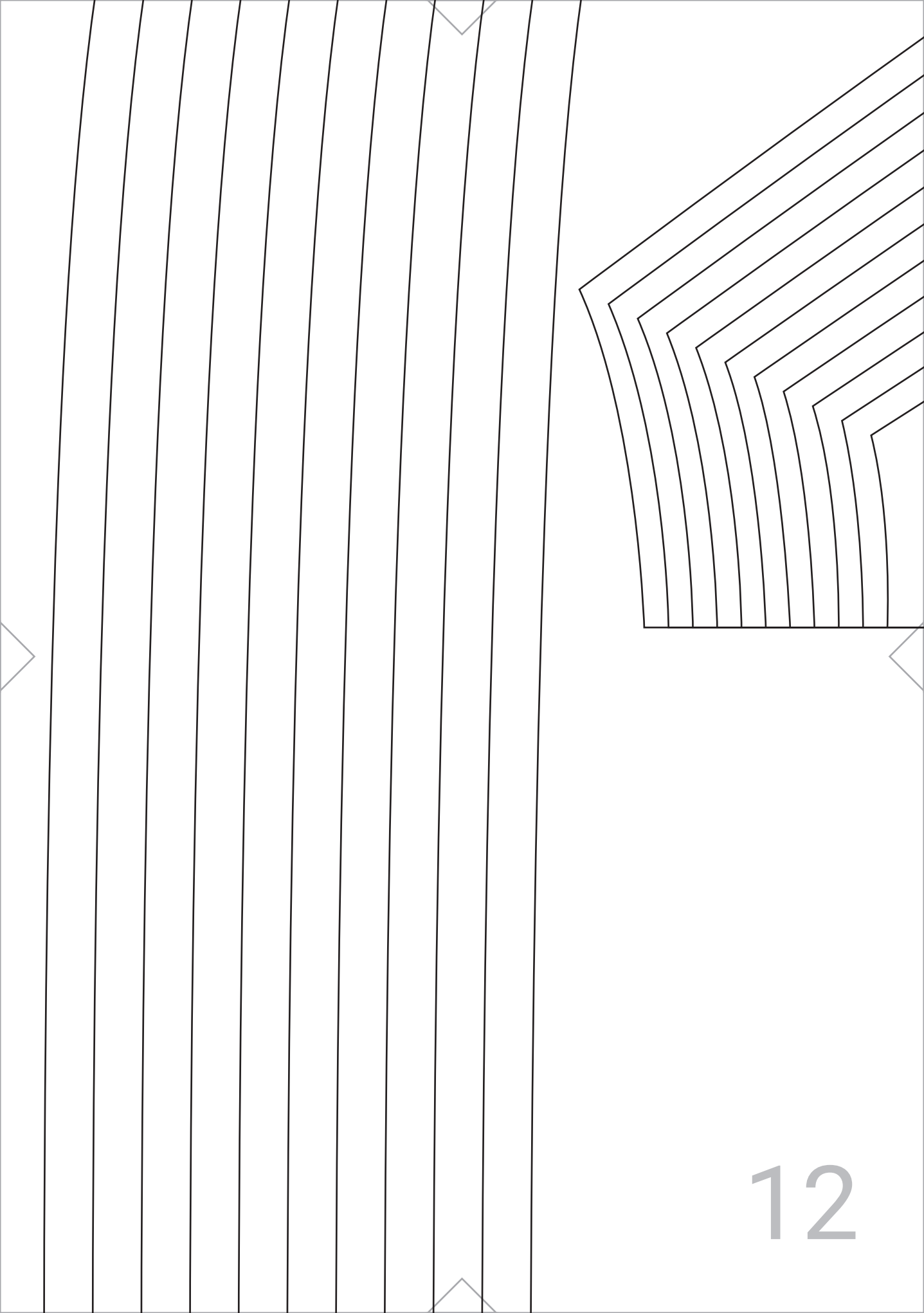




Cut on fold

grainline





PatternApothecary

THE "ASTER" TEE

BACK

Cut 1x on fold

grainline

Cut on fold

PatternApothecary
THE "ASTER" TEE
NECKLINE BINDING
Cut 1x

grainline

