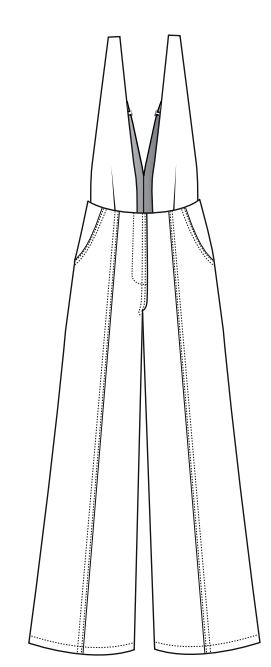


# MAKE MY LEMONADE

ALDO  
34 - 48

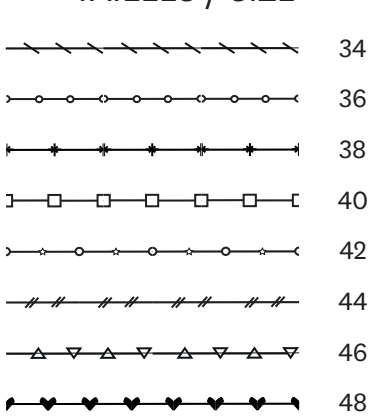


INFOS / TIPS

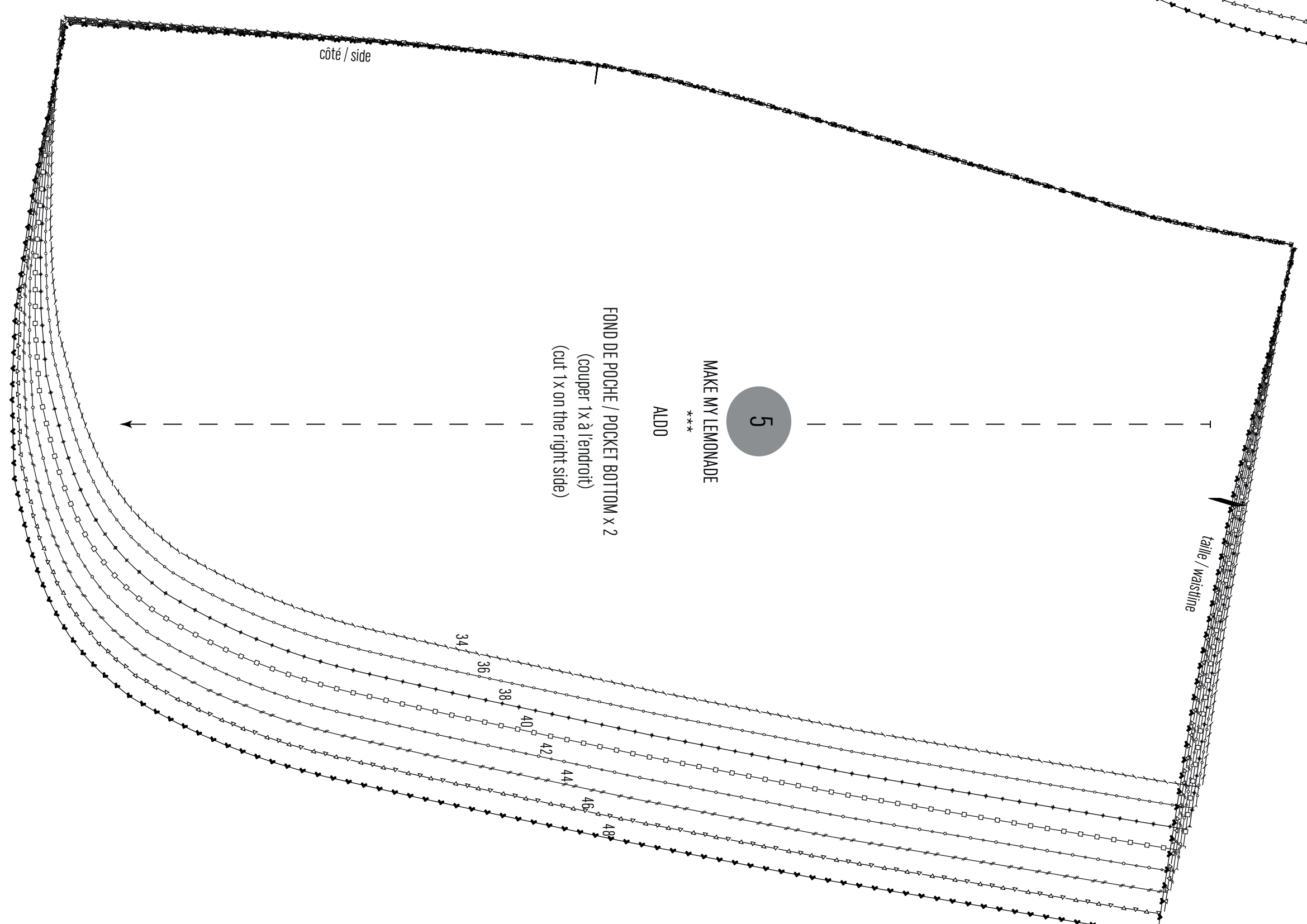
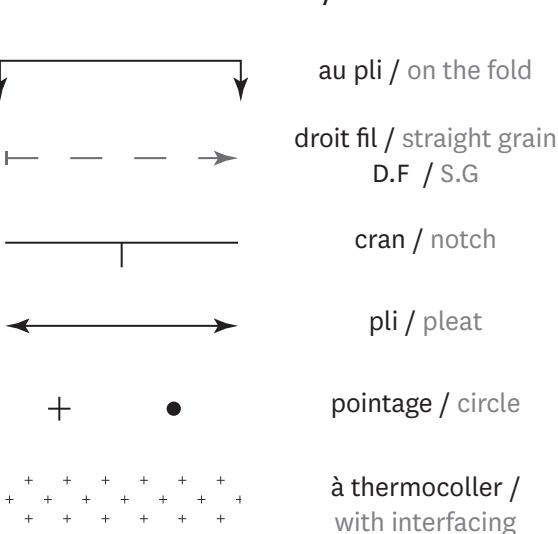
- Ce patron comporte 11 pièces.
- Les valeurs de couture sont incluses et sont de 1cm sauf indications contraires.
- Ce modèle est près du corps.
- Mesurez votre tour de taille et hanches et coupez selon la mesure la plus grande.

- This pattern includes 11 pieces.
- The seam allowance is included and is of 1 cm.
- This model is fitted.
- Take your waist and hips measurements. Cut according to the biggest size.

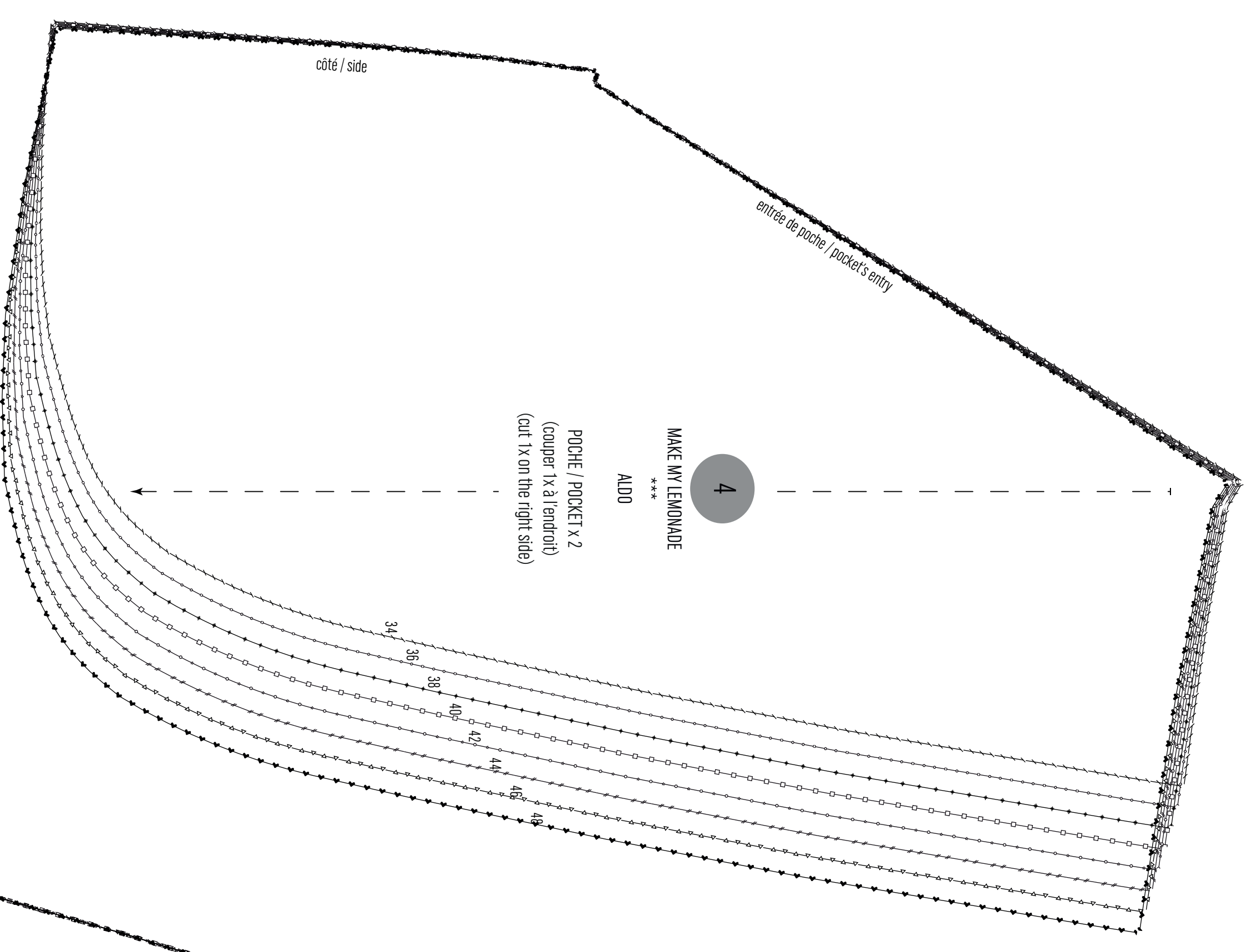
## TAILLES / SIZE



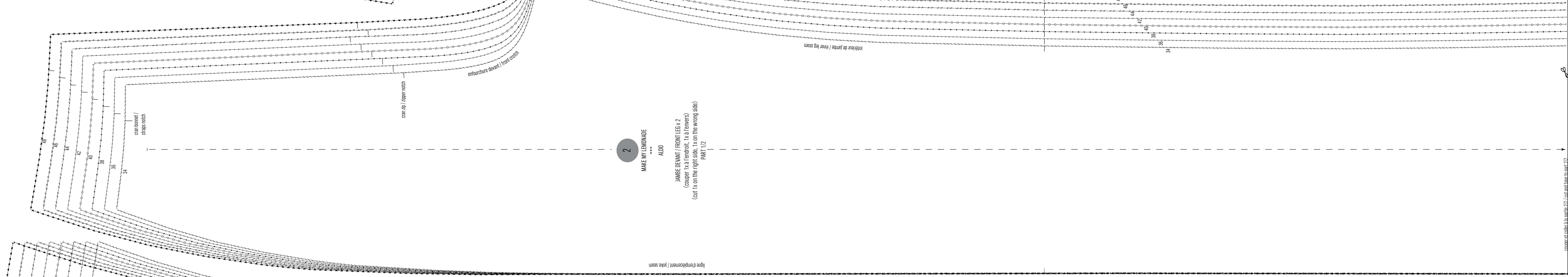
## LÉGENDE / KEY



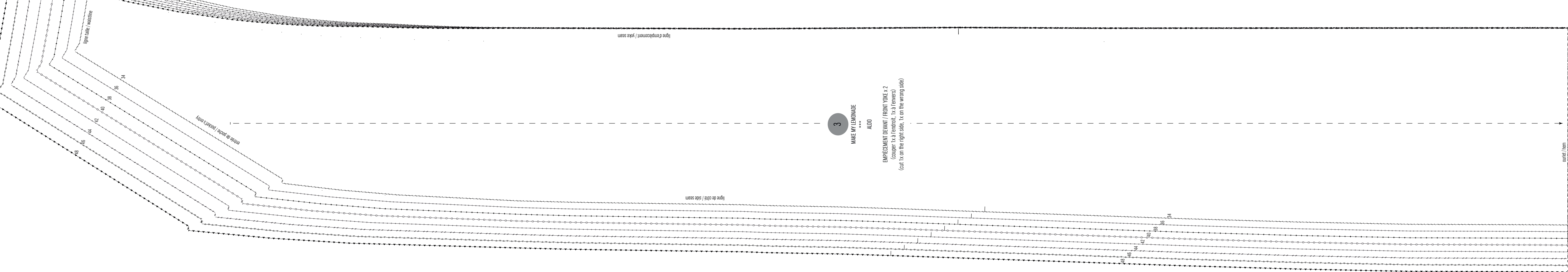
**5**  
MAKE MY LEMONADE  
ALDO  
FOND DE POCHES / POCKET BOTTOM x 2  
(couper 1x à l'endroit, 1x à l'envers)  
(cut 1x on the right side)



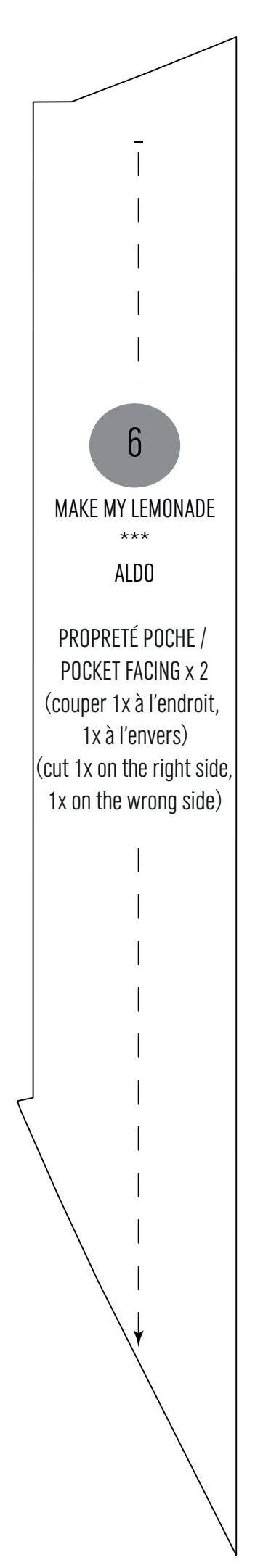
**4**  
MAKE MY LEMONADE  
ALDO  
POCHES / POCKET x 2  
(couper 1x à l'endroit, 1x à l'envers)  
(cut 1x on the right side)



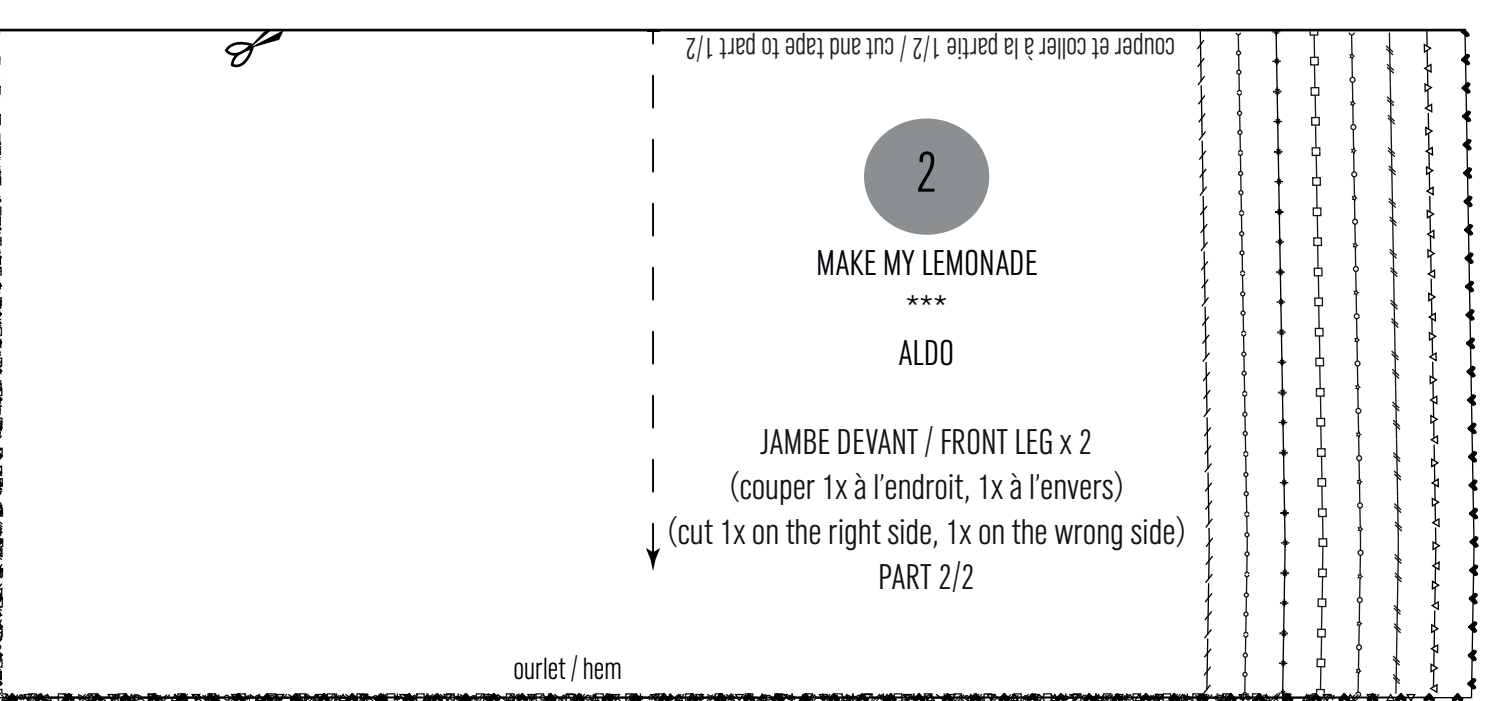
**2**  
MAKE MY LEMONADE  
ALDO  
JAMBE DEVANT / FRONT LEGS x 2  
(couper 1x à l'endroit, 1x à l'envers)  
(cut 1x on the right side, 1x on the wrong side)  
PART 1/2



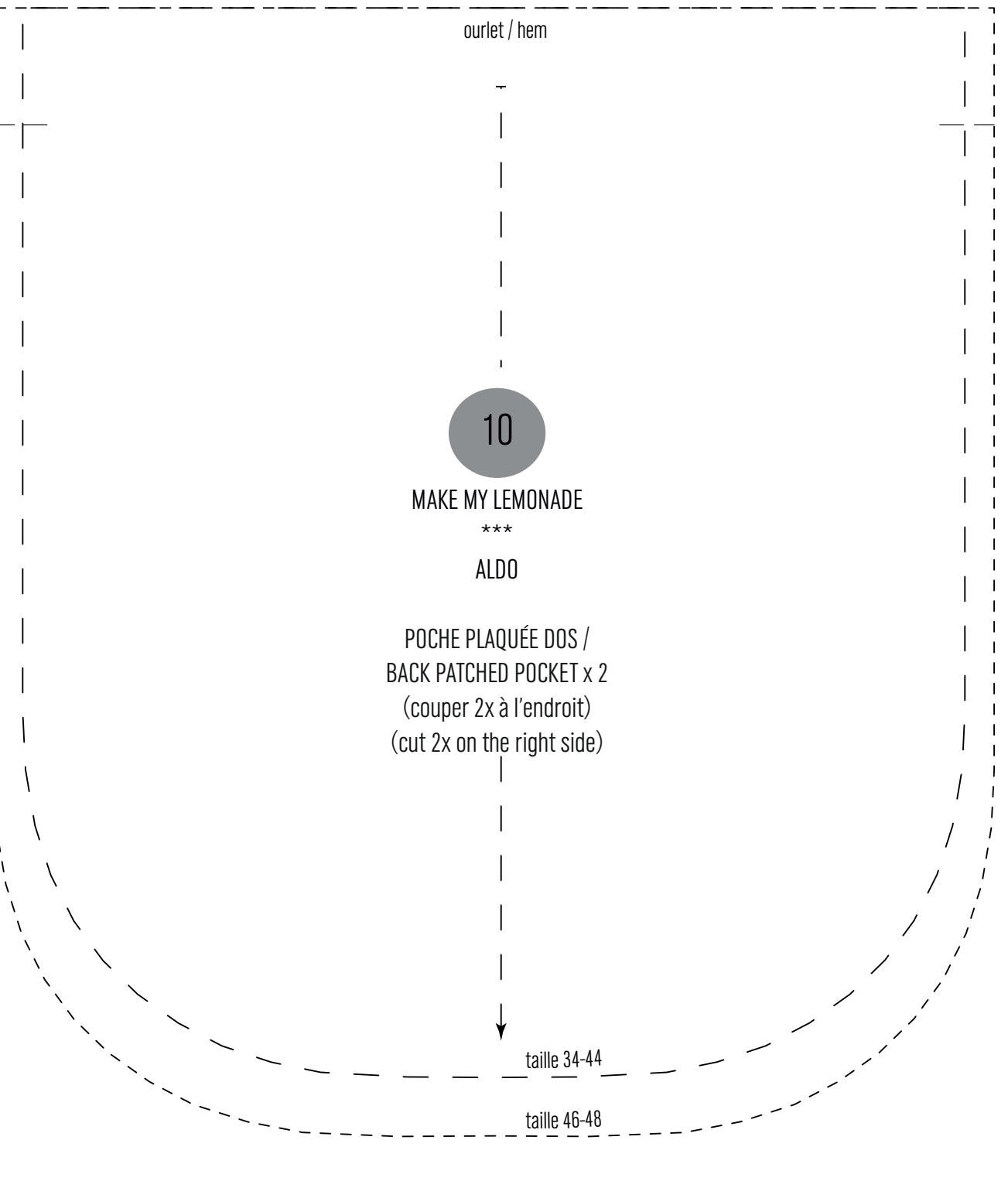
**3**  
MAKE MY LEMONADE  
ALDO  
EMPÈCHEMENT DEVANT / FRONT YOKE x 2  
(couper 1x à l'endroit, 1x à l'envers)  
(cut 1x on the right side, 1x on the wrong side)



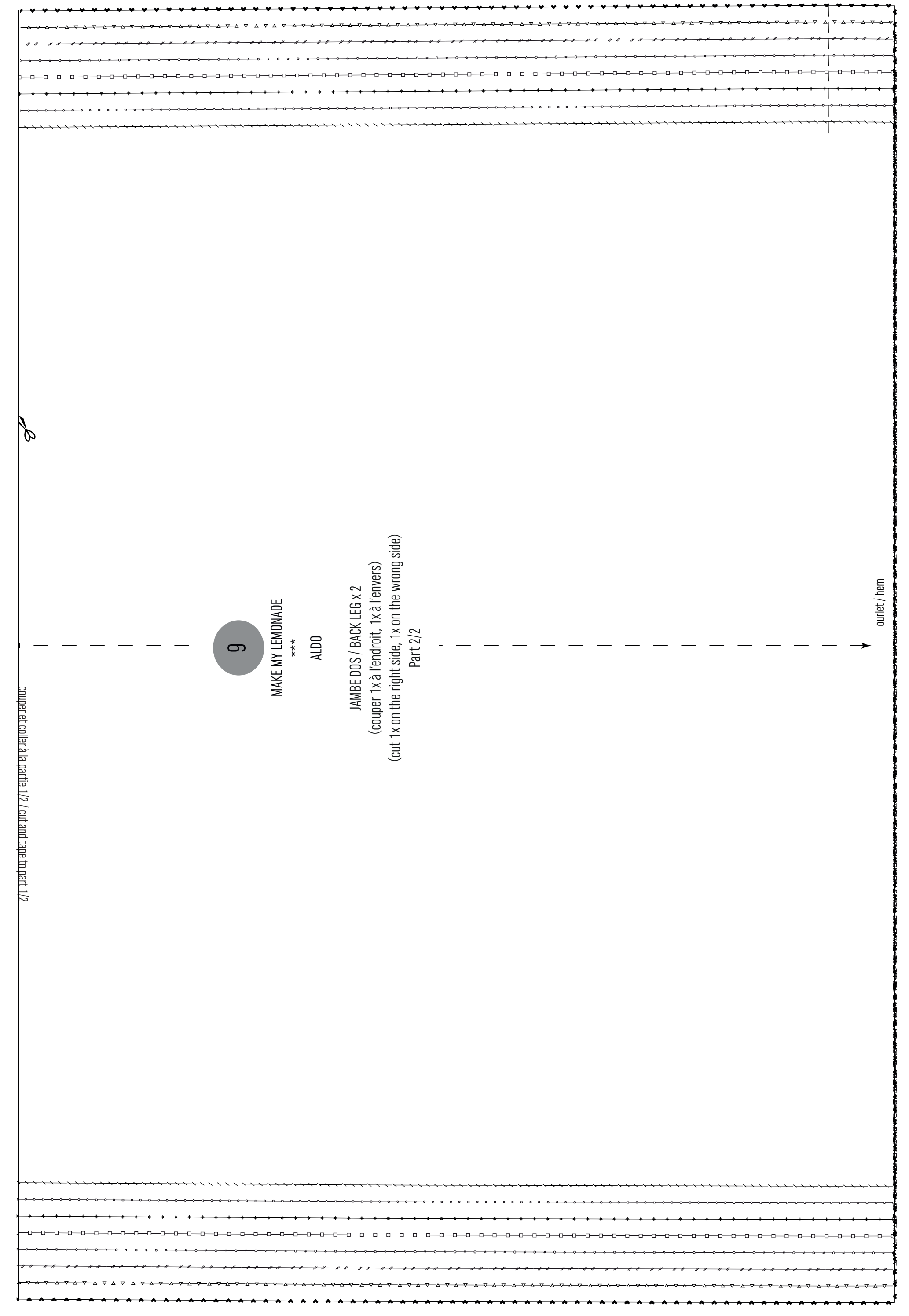
**6**  
MAKE MY LEMONADE  
ALDO  
PROPRETE POCHES / POCKET FACING x 2  
(couper 1x à l'endroit, 1x à l'envers)  
(cut 1x on the right side, 1x on the wrong side)



**2**  
MAKE MY LEMONADE  
ALDO  
JAMBE DEVANT / FRONT LEGS x 2  
(couper 1x à l'endroit, 1x à l'envers)  
(cut 1x on the right side, 1x on the wrong side)  
PART 2/2



**10**  
MAKE MY LEMONADE  
ALDO  
POCHES PLAQUÉES DOS / BACK PATCHED POCKET x 2  
(couper 2x à l'endroit)  
(cut 2x on the right side)



**9**  
MAKE MY LEMONADE  
ALDO  
JAMBE DOS / BACK LEGS x 2  
(couper 1x à l'endroit, 1x à l'envers)  
(cut 1x on the right side, 1x on the wrong side)  
PART 2/2

