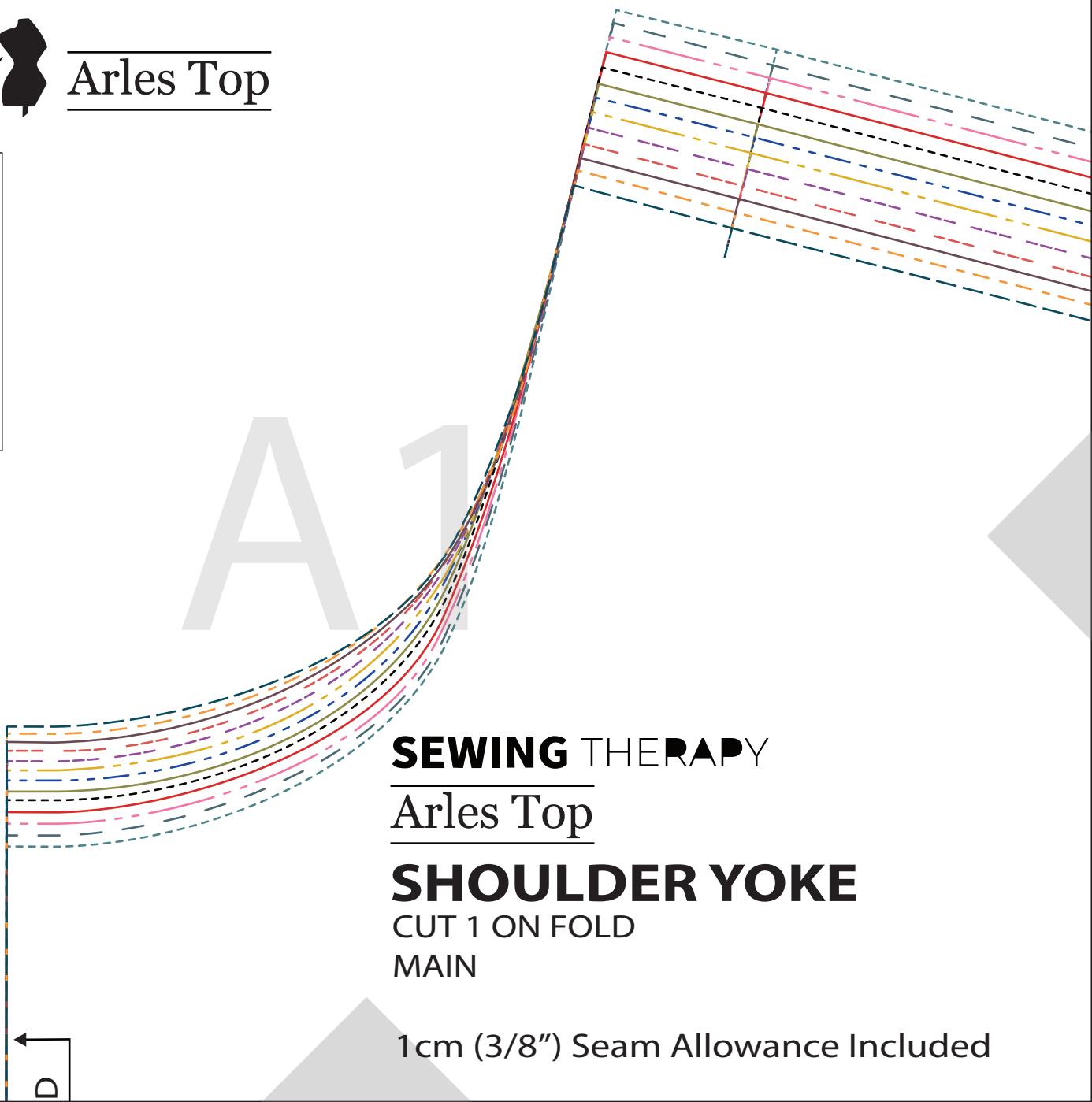


SIZE KEY

0	---
2	- - -
4	—
6	- - -
8	- - -
10	- · -
12	---
14	—
16	- - -
18	—
20	- · -
22	---
24	- - -



SEWING THERAPY

Arles Top

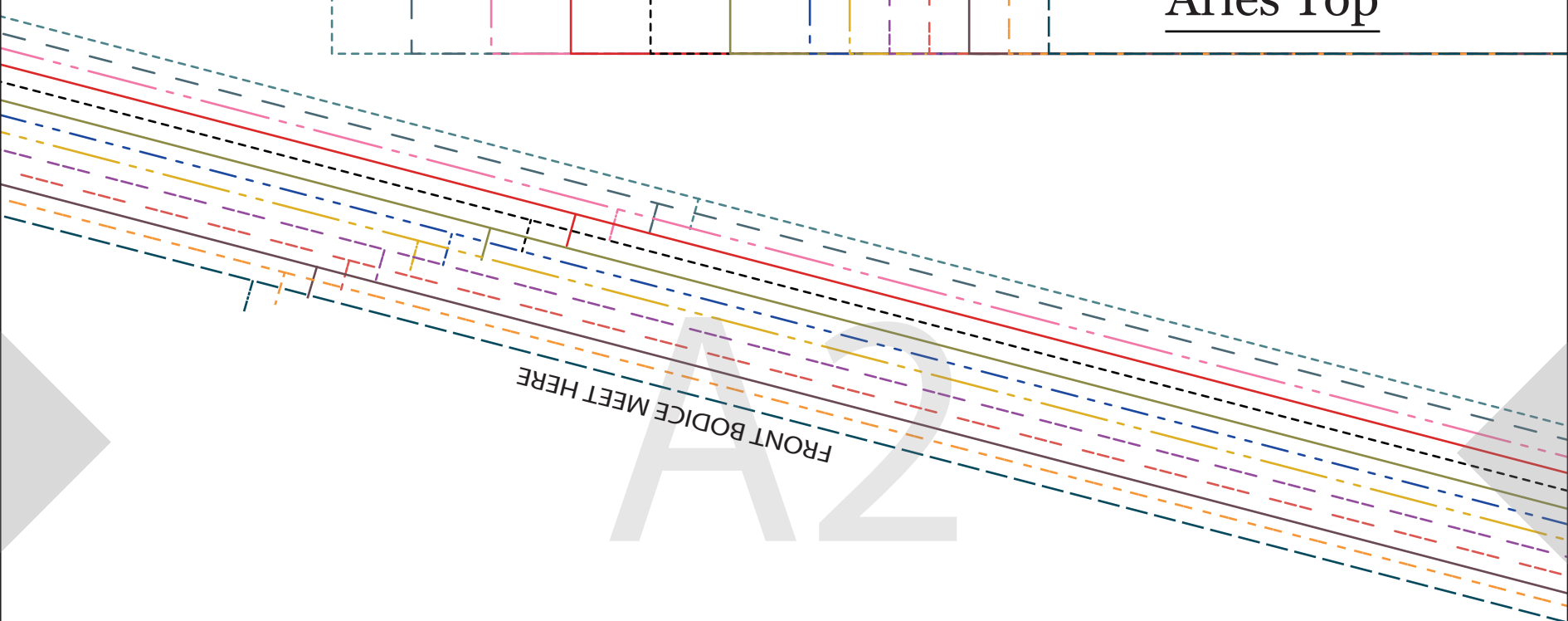
SHOULDER YOKE

CUT 1 ON FOLD

MAIN

1cm (3/8") Seam Allowance Included

SEWING THERAPY
Arles Top



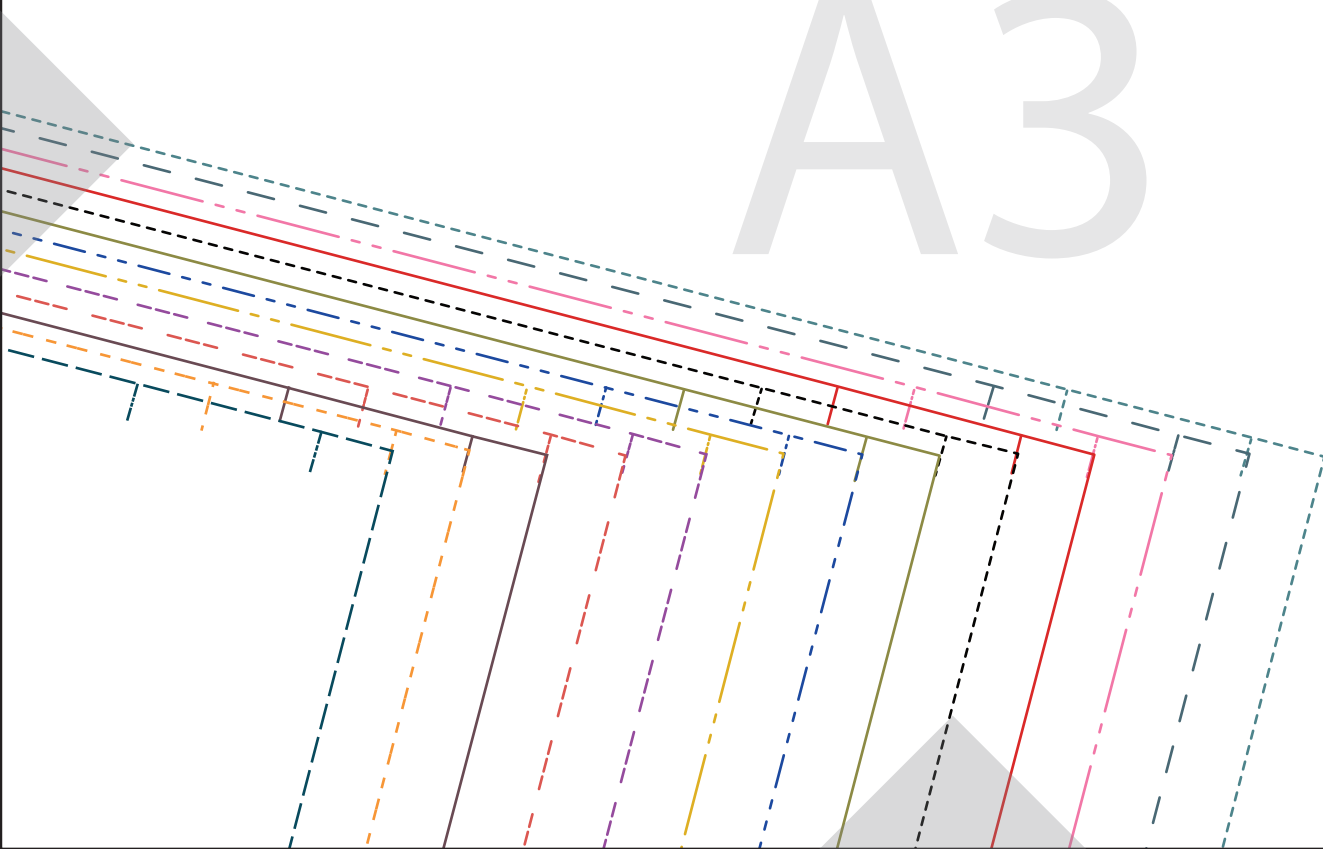
FRONT BODICE MEET HERE

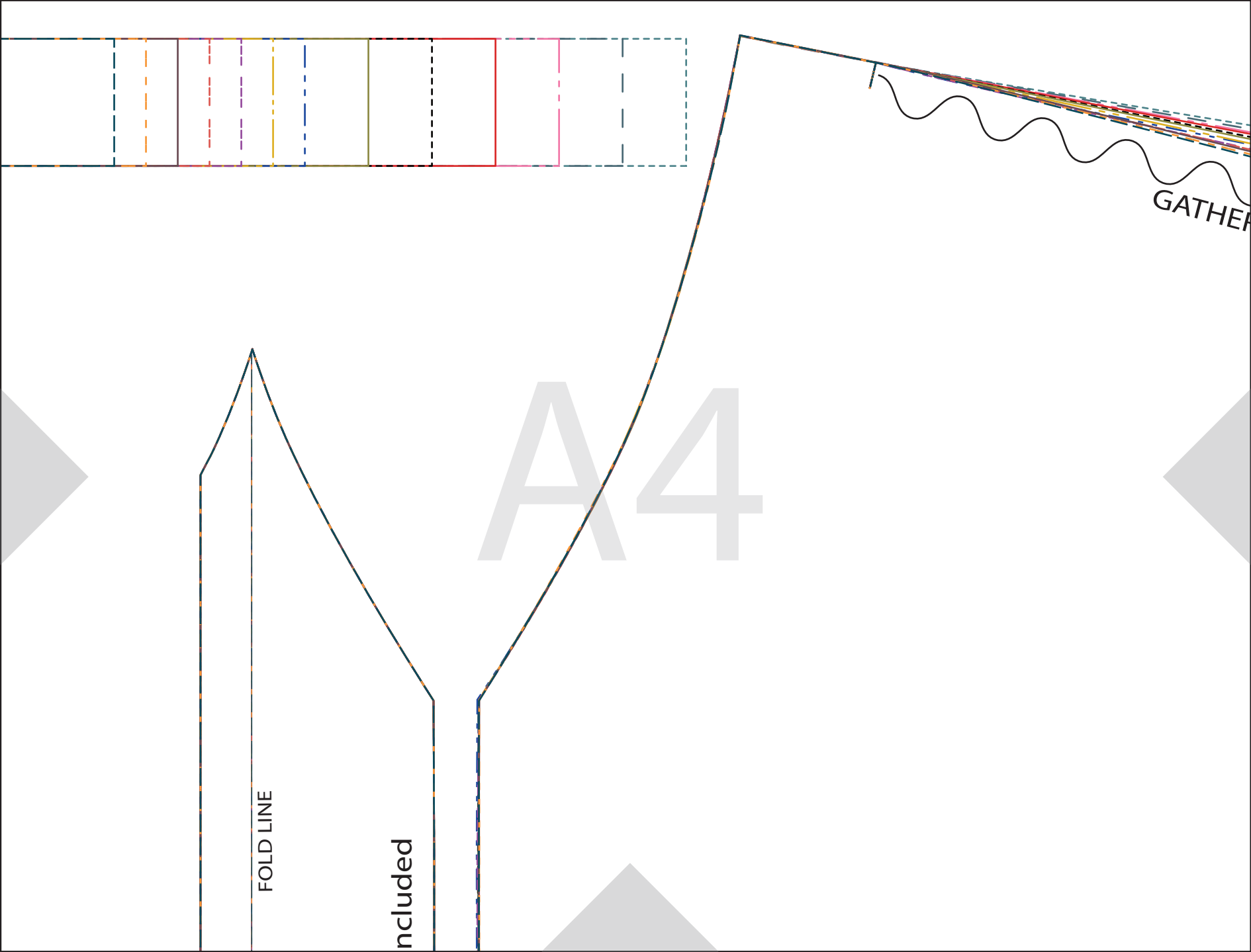
BACK ELASTIC

CUT 1

Adjust the length
as needed

A3



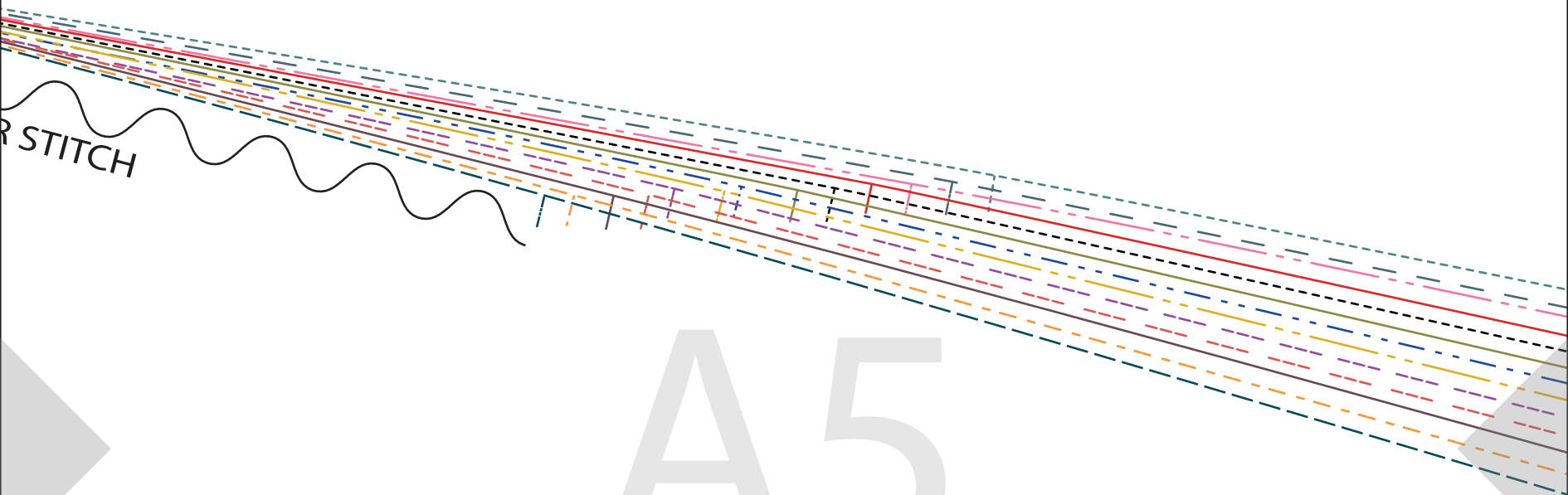


A4

FOLD LINE

included

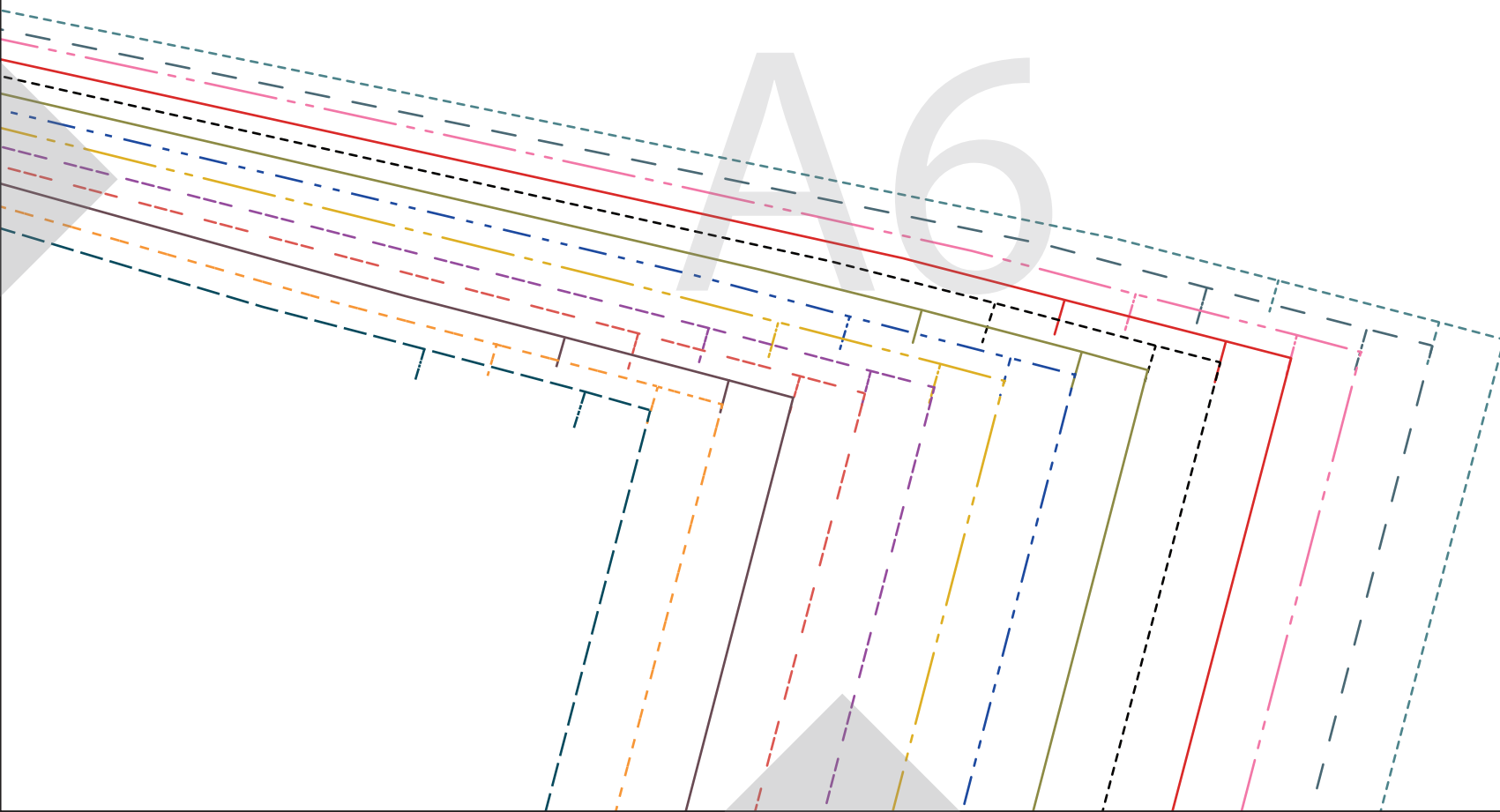
GATHER



R STITCH

A5

A6

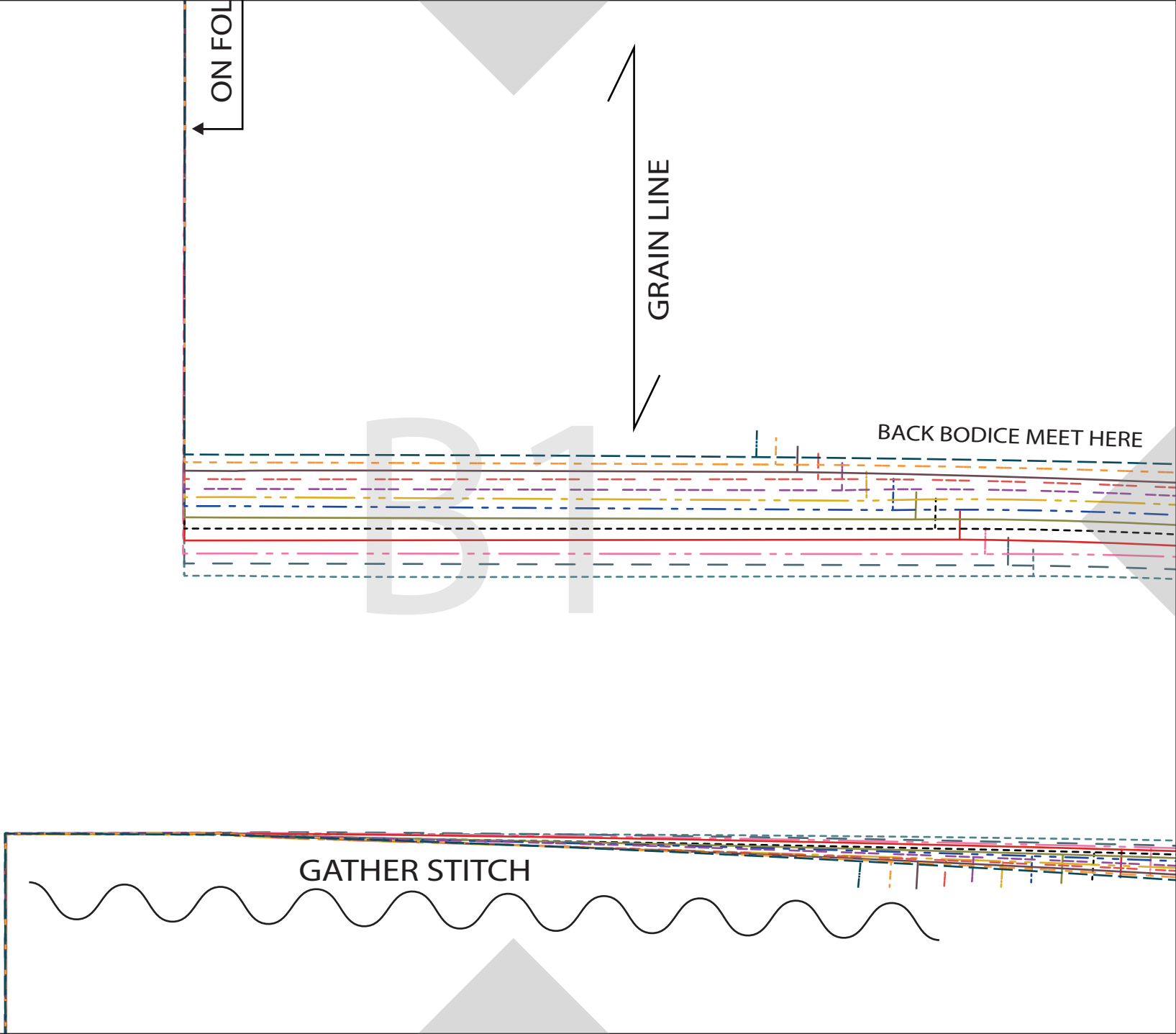


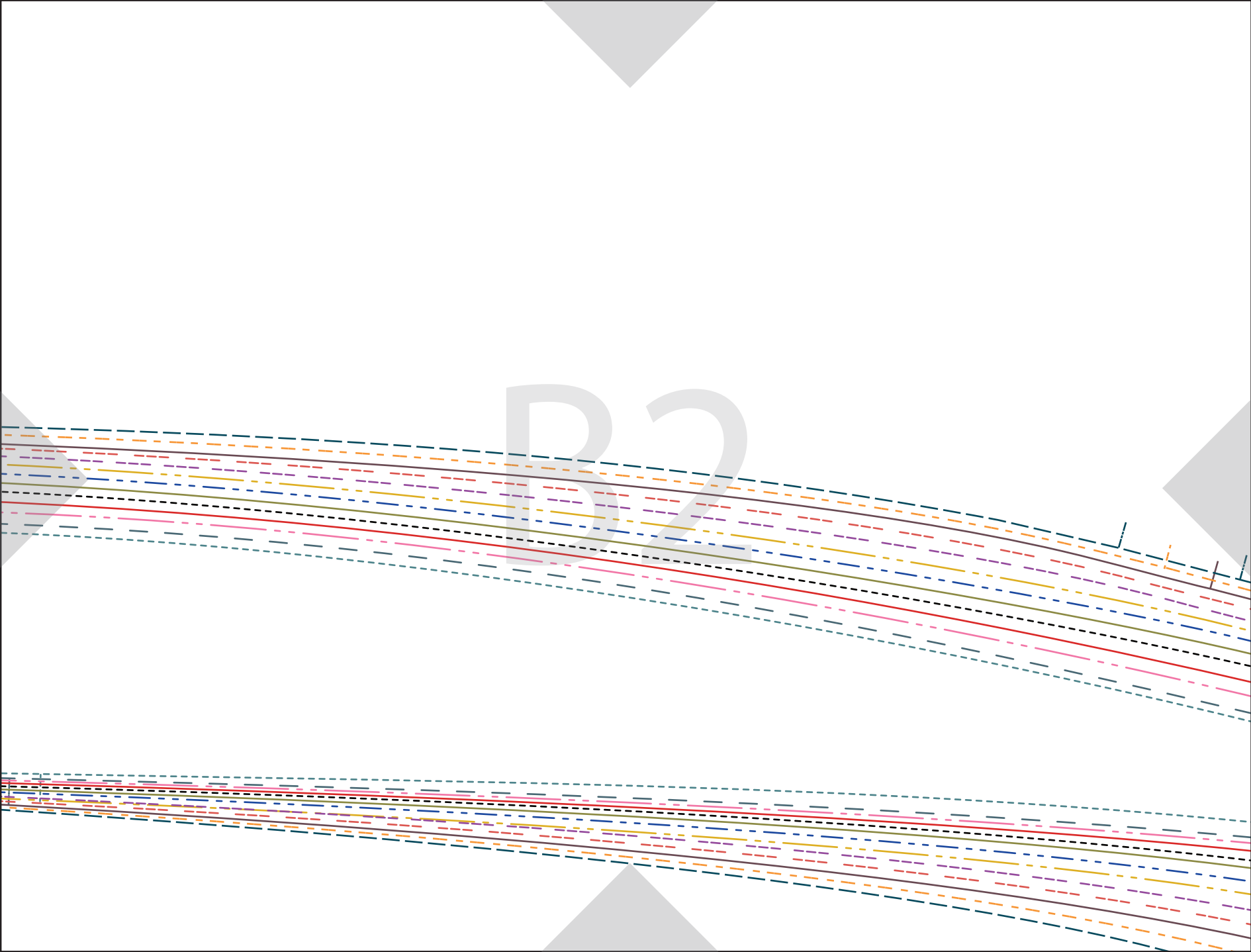
ON FOLD

GRAIN LINE

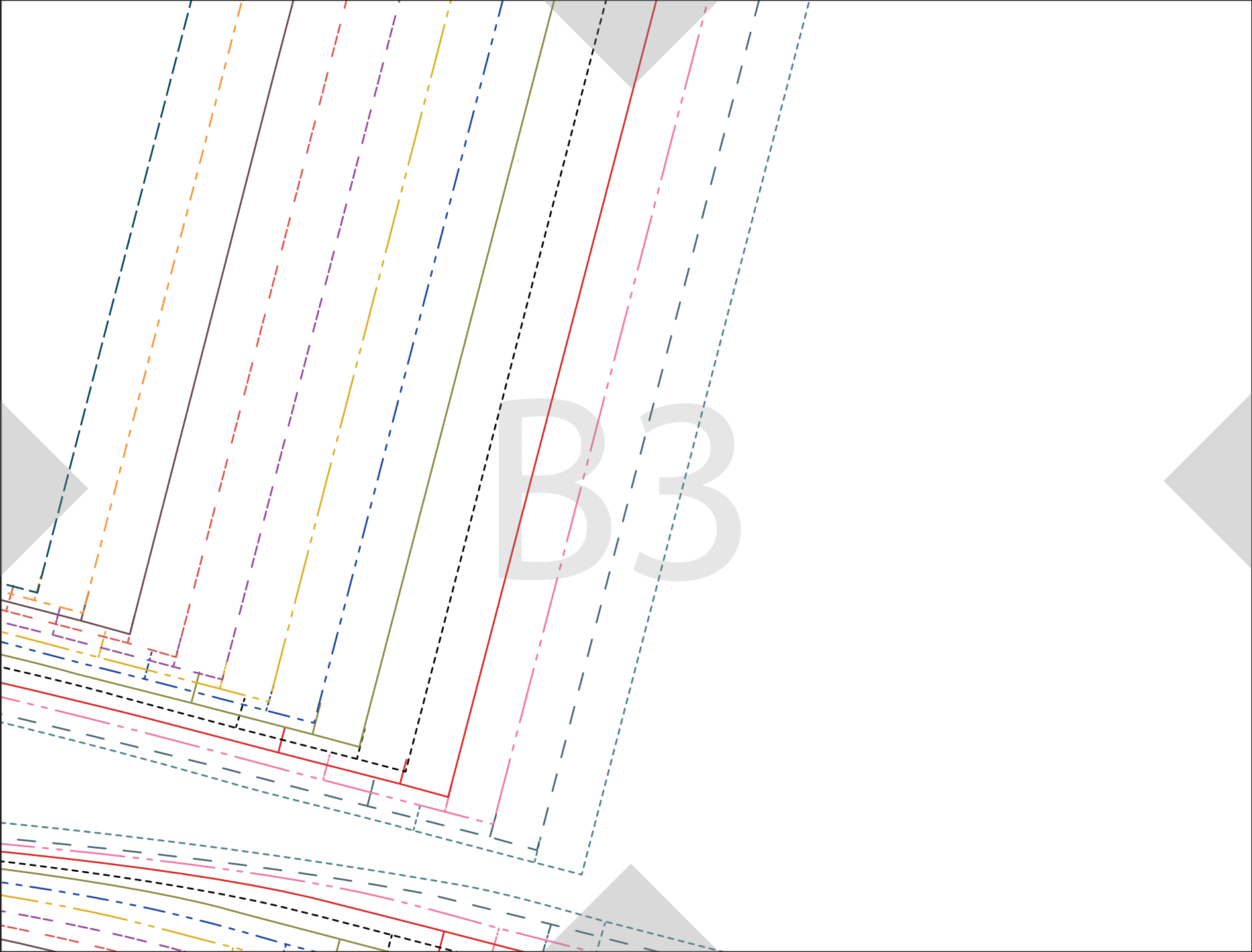
BACK BODICE MEET HERE

GATHER STITCH





B3



SEWING THERAPY

Arles Top

CUT 2 MIRRORED
MAIN

FRONT FACING

1cm (3/8") Seam Allowance

B4

SEWING THERAPY

Arles Top

FRONT BODICE

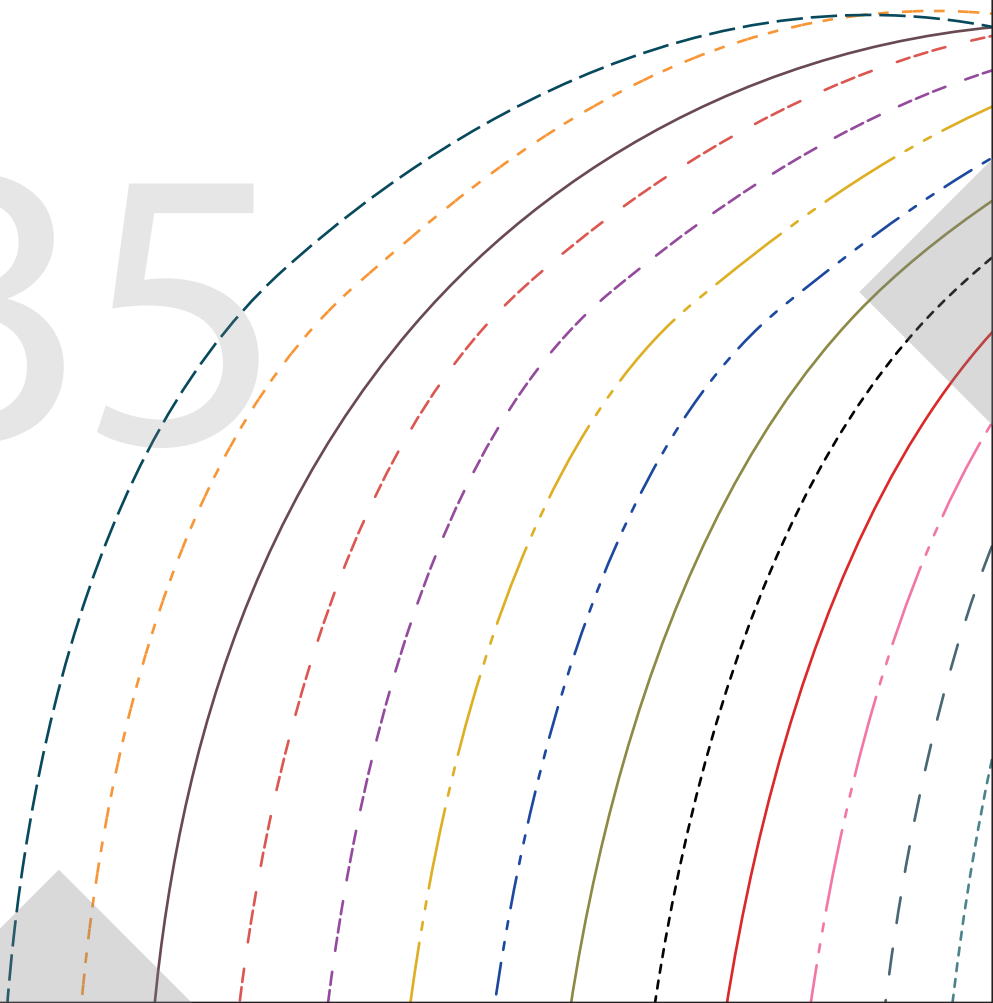
CUT 2 MIRRORED
MAIN

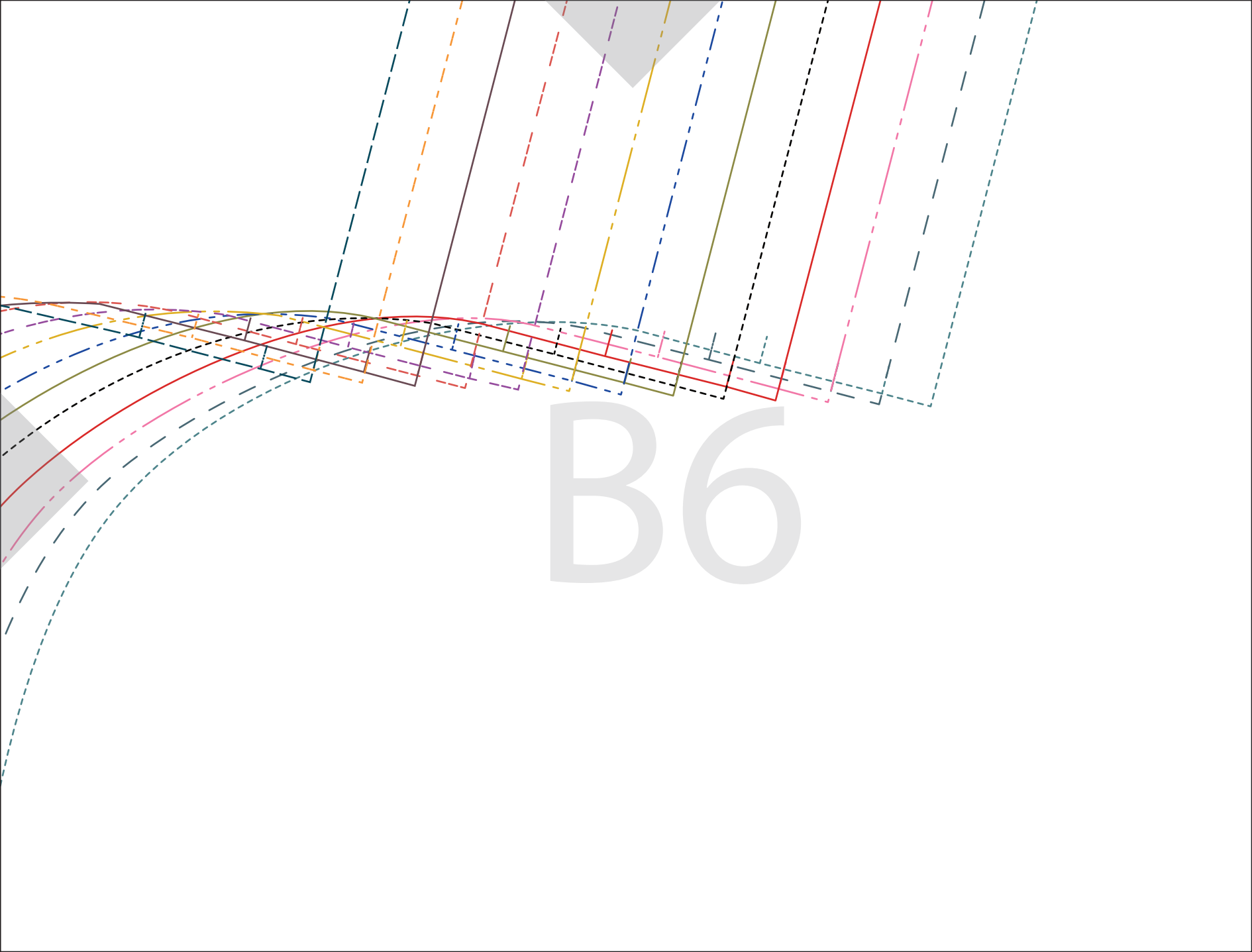
1cm (3/8") Seam Allowance Included

GRAIN LINE



B5





B6

SEWING THERAPY

Arles Top

BACK BODICE

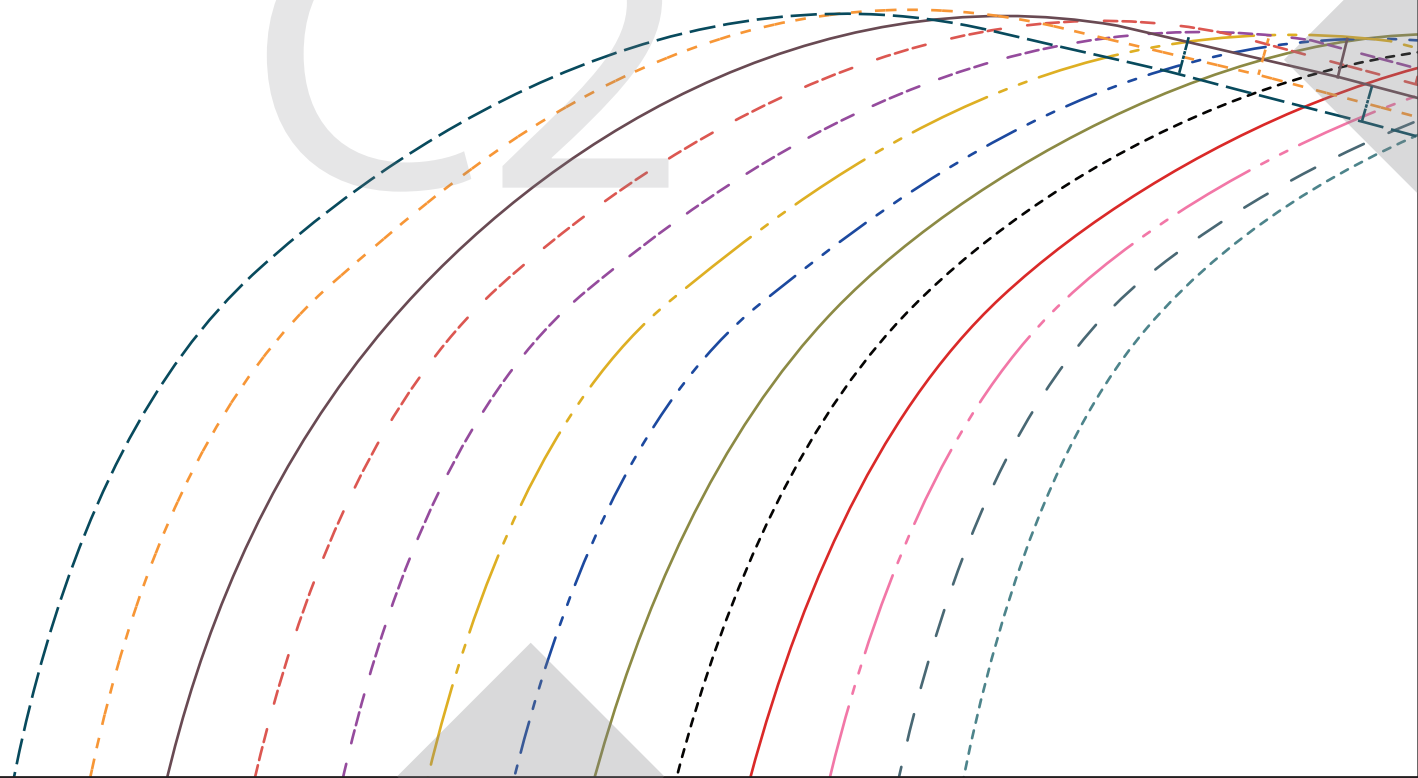
CUT 1 ON FOLD

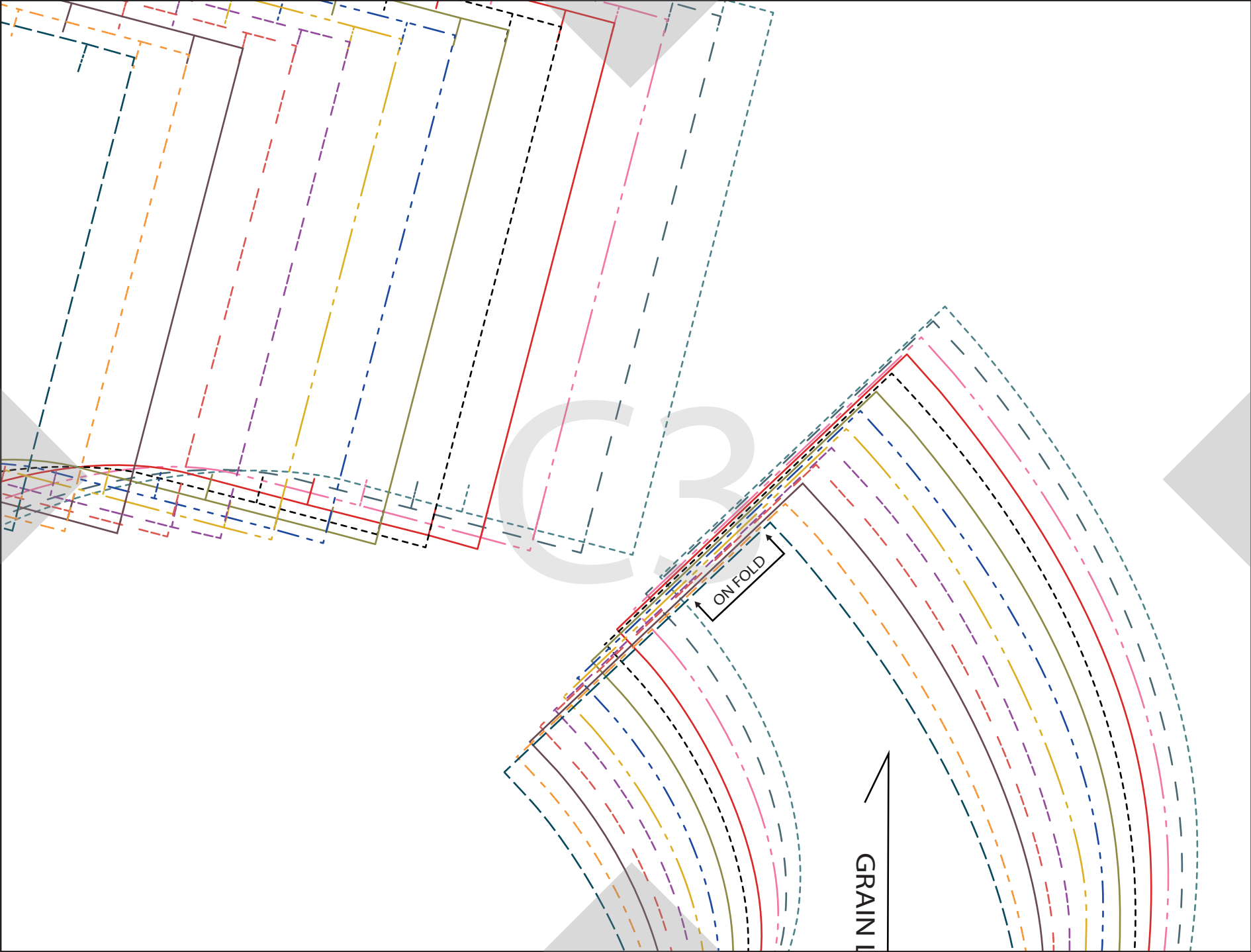
MAIN

1cm (3/8") Seam Allowance Included



C2



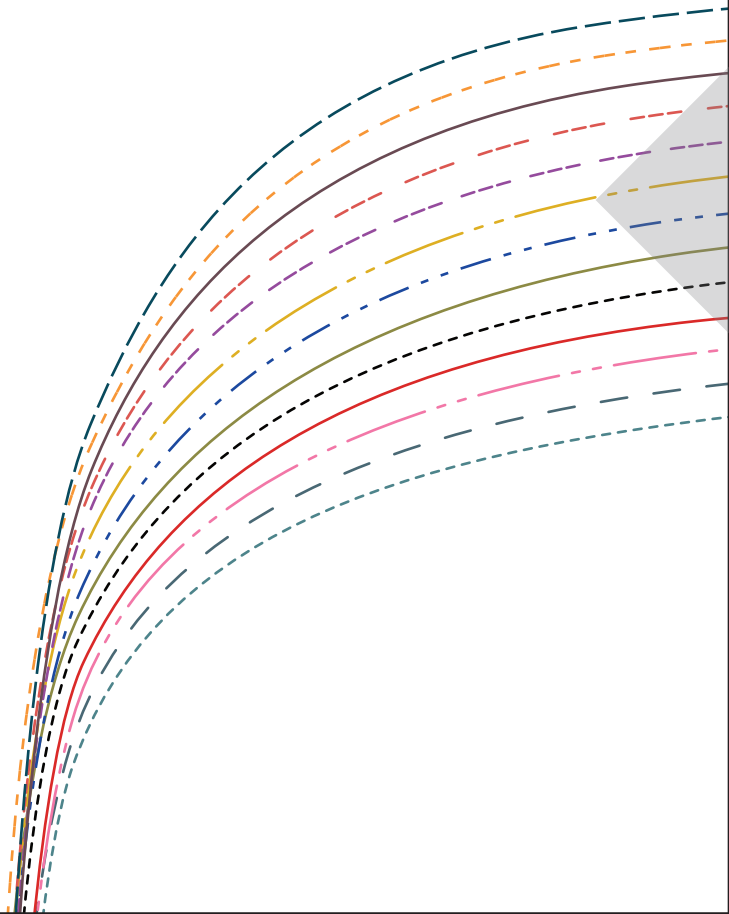


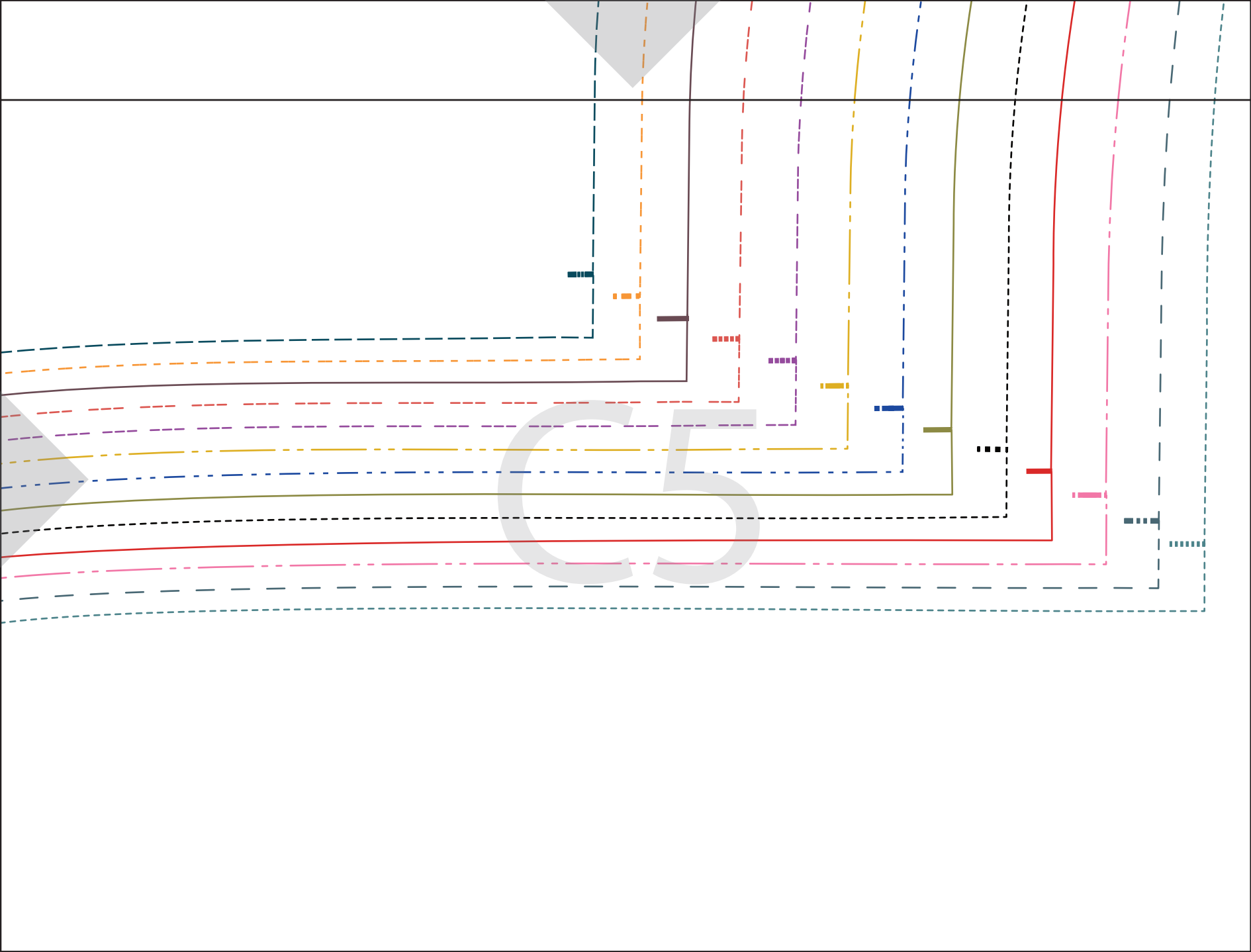
Cut here to adjust
the length as needed

Cut here to adjust
the length as needed

GRAIN LINE

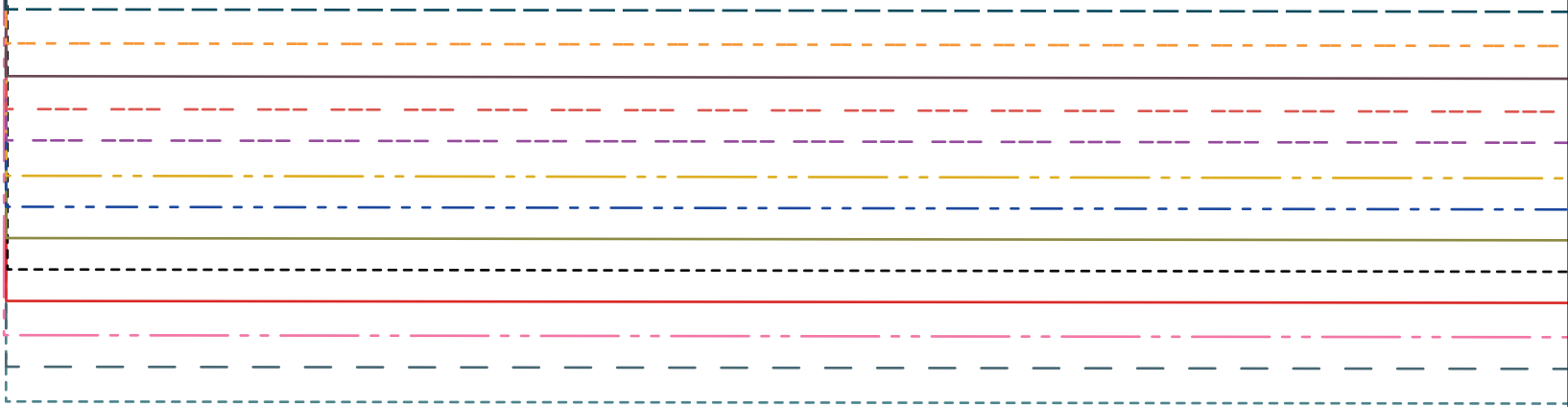
C4

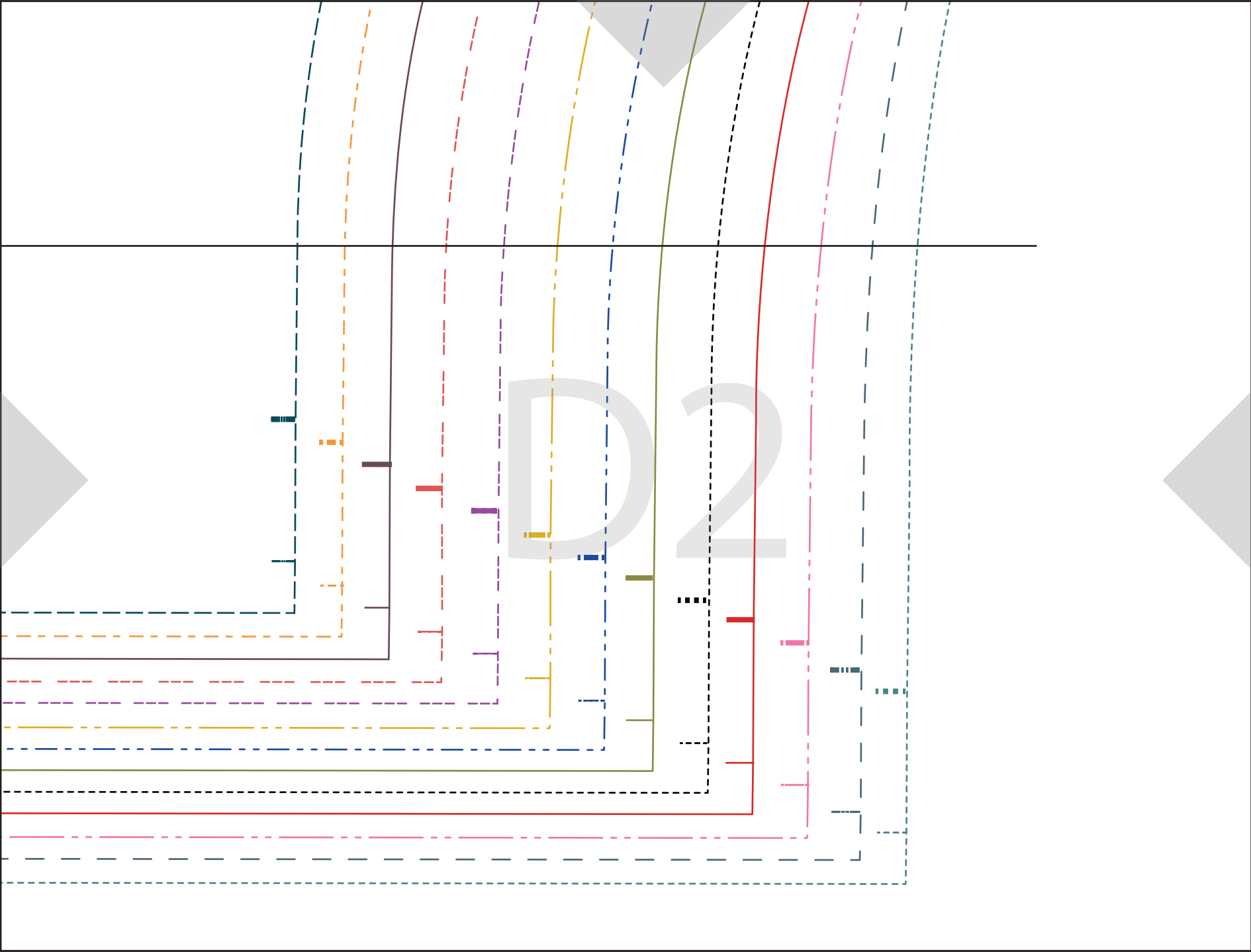




Cut here to adjust
the length as needed

D1





LINE

SEWING THERAPY

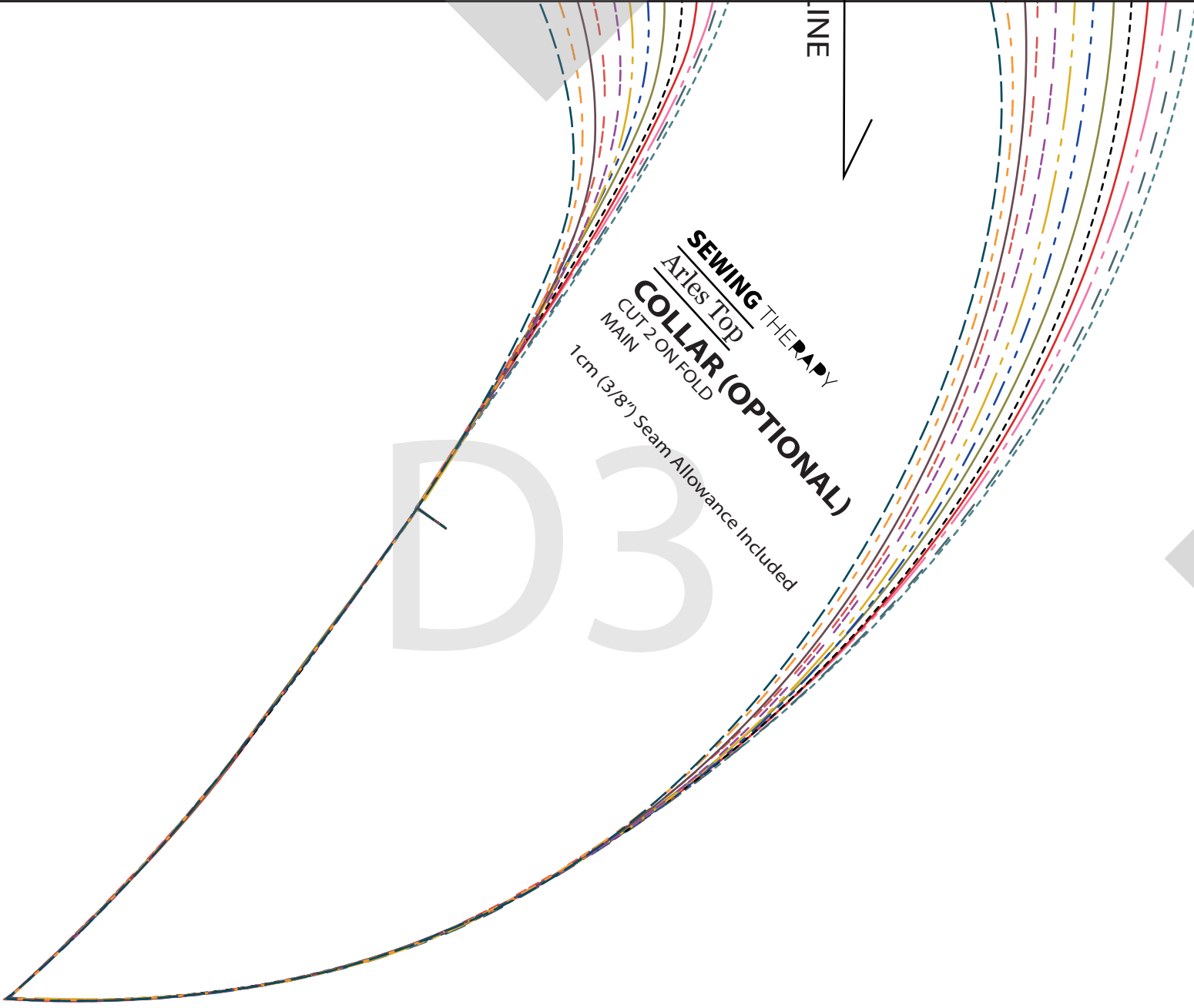
Arles Top

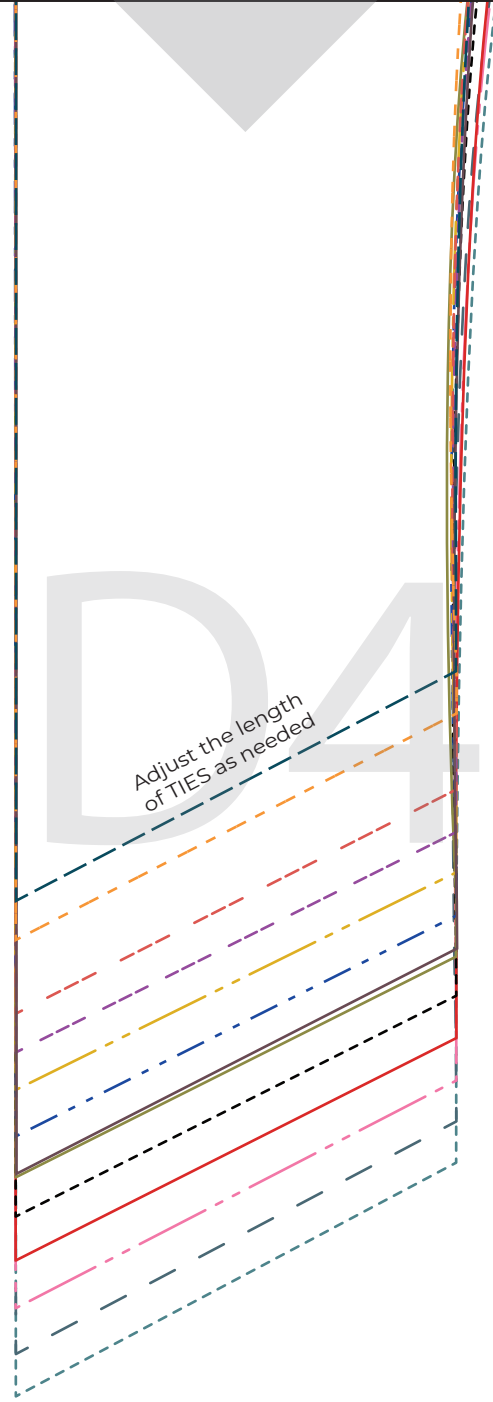
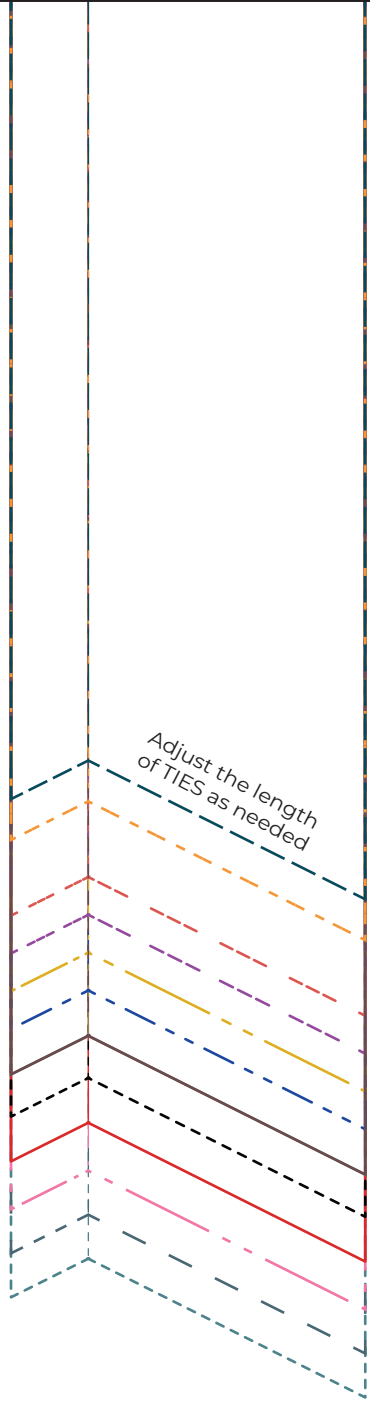
COLLAR (OPTIONAL)

CUT 2 ON FOLD
MAIN

1 cm (3/8") Seam Allowance Included

D3





D4